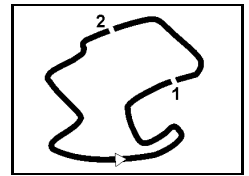


## LAGUNA SECA 7-8-9 July, 2000 Championship Standings

SUPERBIKE WORLD CHAMPIONSHIP 2000																
		April 2 SOUTH AFRICA	April 23 AUSTRALIA	April 30 JAPAN	May 14 GREAT BRITAIN	May 21 ITALY	June 4 GERMANY	June 18 SAN MARINO	June 25 SPAIN	July 9 UNITED STATES	August 6 EUROPE	September 3 NETHERLANDS	September 10 GERMANY	October 15 ITALY	TOTAL	
1 C. EDWARDS	USA	25 25	11 11	11 16	25	20 25	13 20	6	11 13	20 13					265	
2 T. CORSER	AUS	16 16	25	7 11	8	8 10	9 10	25 25	25 11	16 25					247	
3 N. HAGA	JPN		6 20	20 13	13 13	11	16 25	9	16 25	25 20					232	
4 P. CHILI	ITA	13 20	16	16	20 16	25 20	16		7	11 10					190	
5 B. BOSTROM	USA	8 9	1 2	3	1 8	9 6	6 5	10 16	20 20	13 16					153	
6 A. YANAGAWA	JPN		7 10	10	9 11	16 16	20	11 10	6 4	10 11					151	
7 T. BAYLISS	AUS					13 13	25 13	20 20	13 16	9					142	
8 K. FUJIWARA	JPN	9 8	3 9		3	5 7	6	16 13	8 6	9 8					110	
9 A. SLIGHT	NZL				7 9	11 9	11 11	7	9 9	8 7					98	
10 G. LAVILLA	ESP	11 11	9 13	6 6	5	10									71	
A. MEKLAU	AUT	6 4		5 4	2 7	8	10 8	5 3	5	4					71	
12 J. BORJA	ESP	7 10		2 5			3 4	13 11	8	7					70	
13 A. ANTONELLO	ITA	7			5	7 5	7 9	6 9	7						62	
14 H. AOKI	JPN	10 13	6		6			7 5	5	5					57	
15 H. IZUTSU	JPN			25 25											50	
16 R. ULM	AUT	1	10 5	4 2	3	6	8 7			2					48	
17 P. GODDARD	AUS							8 8	10 10	6					42	
18 N. HODGSON	GBR				16 25										41	
19 C. FOGARTY	GBR	20	20												40	
20 A. GOBERT	AUS	5	25 7												37	
G. BUSSEI	ITA	5 6	8	1		2		4		6 5					37	
22 V. GUARESCHI	ITA	2	16		2	4	3		4 3						34	
23 C. WALKER	GBR				11 20										31	
24 W. YOSHIKAWA	JPN			8 20											28	
25 L. PEDERCINI	ITA		13 3					3 2		3 1					25	
26 J. HAYDON	GBR				10 10		4								24	
27 S. CRAFAR	NZL	3 3	8				5 2								21	
28 A. RYO	JPN			13 7											20	
29 K. KITAGAWA	JPN			10 8											18	
M. SANCHINI	ITA	1	4 4			3			3 1	2					18	
31 L. ISAACS	RSA	4	2			2		1		4					13	
32 A. GRAMIGNI	ITA	2			1			4 1	2						10	
33 T. SERIZAWA	JPN			9											9	



Laguna Seca 3.610 m

## LAGUNA SECA 7-8-9 July, 2000 Championship Standings

SUPERBIKE WORLD CHAMPIONSHIP 2000														
	April 2 SOUTH AFRICA	April 23 AUSTRALIA	April 30 JAPAN	May 14 GREAT BRITAIN	May 21 ITALY	June 4 GERMANY	June 18 SAN MARINO	June 25 SPAIN	July 9 UNITED STATES	August 6 EUROPE	September 3 NETHERLANDS	September 10 GERMANY	October 15 ITALY	TOTAL
33 M. TAMADA	JPN		9											9
35 M. BARTH	GER				1 4	1 1		1						8
36 J. REYNOLDS	GBR			6										6
37 A. MAXWELL	AUS	5												5
38 J. CRAWFORD	GBR			4										4
S. HISLOP	GBR			4										4
40 L. PEGRAM	USA								3					3
J. OELSCHLAEGE	GER				3									3
Y. TAKEDA	JPN		3											3
P. BLORA	ITA				1			2						3
44 F. PROTAT	FRA						2							2
S. PLATER	GBR					2								2
46 I. JERMAN	SLO								1					1
M. KAMADA	JPN		1											1
I. ANTONELLI	ITA	1												1