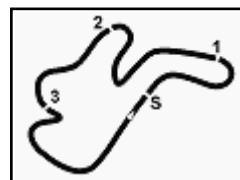


Phillip Island 4.445 m

Australian Round, 26-27-28 February 2016

World Superbike - Free Practices Combined Results

| No. | Rider | Nat | Team | Bike | FP1 | FP2 | Time | Gap | Rel. | Avg | Laps |
|-----|---------------------------|-----|--------------------------------|------------------------|-----------------|-----------------|-----------------|-------|-------|---------|------|
| 1 | 50 S. GUINTOLI | FRA | Pata Yamaha Official WSBK Team | Yamaha YZF R1 | 1'31.640 | 1'30.865 | 1'30.865 | | | 176,107 | 41 |
| 2 | 60 M. VAN DER MARK | NED | Honda World Superbike Team | Honda CBR1000RR SP | 1'31.826 | 1'31.249 | 1'31.249 | 0.384 | 0.384 | 175,366 | 55 |
| 3 | 1 J. REA | GBR | Kawasaki Racing Team | Kawasaki ZX-10R | 1'31.641 | 1'31.324 | 1'31.324 | 0.459 | 0.075 | 175,222 | 48 |
| 4 | 66 T. SYKES | GBR | Kawasaki Racing Team | Kawasaki ZX-10R | 1'31.543 | 1'31.363 | 1'31.363 | 0.498 | 0.039 | 175,147 | 44 |
| 5 | 2 L. CAMIER | GBR | MV Agusta Reparto Corse | MV Agusta 1000 F4 | 1'31.650 | 1'31.445 | 1'31.445 | 0.580 | 0.082 | 174,990 | 32 |
| 6 | 69 N. HAYDEN | USA | Honda World Superbike Team | Honda CBR1000RR SP | 1'31.789 | 1'31.475 | 1'31.475 | 0.610 | 0.030 | 174,933 | 47 |
| 7 | 34 D. GIUGLIANO | ITA | Aruba.it Racing - Ducati | Ducati 1199 Panigale R | 1'31.844 | 1'31.527 | 1'31.527 | 0.662 | 0.052 | 174,834 | 41 |
| 8 | 7 C. DAVIES | GBR | Aruba.it Racing - Ducati | Ducati 1199 Panigale R | 1'31.718 | 1'31.593 | 1'31.593 | 0.728 | 0.066 | 174,708 | 43 |
| 9 | 32 L. SAVADORI | ITA | IodaRacing Team | Aprilia RSV4 RF | 1'32.121 | 1'31.725 | 1'31.725 | 0.860 | 0.132 | 174,456 | 42 |
| 10 | 21 M. REITERBERGER | GER | Althea BMW Racing Team | BMW S1000 RR | 1'31.792 | 1'31.854 | 1'31.792 | 0.927 | 0.067 | 174,329 | 46 |
| 11 | 22 A. LOWES | GBR | Pata Yamaha Official WSBK Team | Yamaha YZF R1 | 1'31.922 | 1'31.825 | 1'31.825 | 0.960 | 0.033 | 174,266 | 39 |
| 12 | 40 R. RAMOS | ESP | Team GoEleven | Kawasaki ZX-10R | 1'32.689 | 1'32.030 | 1'32.030 | 1.165 | 0.205 | 173,878 | 39 |
| 13 | 12 X. FORÉS | ESP | Barni Racing Team | Ducati 1199 Panigale R | 1'32.070 | 1'32.696 | 1'32.070 | 1.205 | 0.040 | 173,803 | 21 |
| 14 | 81 J. TORRES | ESP | Althea BMW Racing Team | BMW S1000 RR | 1'32.383 | 1'32.370 | 1'32.370 | 1.505 | 0.300 | 173,238 | 35 |
| 15 | 46 M. JONES | AUS | Desmo Sport Ducati | Ducati 1199 Panigale R | 1'32.821 | 1'32.476 | 1'32.476 | 1.611 | 0.106 | 173,039 | 36 |
| 16 | 15 A. DE ANGELIS | RSM | IodaRacing Team | Aprilia RSV4 RF | 1'32.827 | 1'32.530 | 1'32.530 | 1.665 | 0.054 | 172,939 | 41 |
| 17 | 20 S. BARRIER | FRA | Pedercini Racing | Kawasaki ZX-10R | 1'32.852 | 1'32.553 | 1'32.553 | 1.688 | 0.023 | 172,896 | 36 |
| 18 | 25 J. BROOKES | AUS | Milwaukee BMW | BMW S1000 RR | 1'33.354 | 1'32.704 | 1'32.704 | 1.839 | 0.151 | 172,614 | 43 |
| 19 | 54 T. RAZGATLIOGLU | TUR | Grillini Racing Team | Kawasaki ZX-10R | 1'33.844 | 1'33.459 | 1'33.459 | 2.594 | 0.755 | 171,219 | 45 |
| 20 | 17 K. ABRAHAM | CZE | Milwaukee BMW | BMW S1000 RR | 1'34.277 | 1'33.491 | 1'33.491 | 2.626 | 0.032 | 171,161 | 36 |
| 21 | 9 D. SCHMITTER | SUI | Grillini Racing Team | Kawasaki ZX-10R | 1'34.347 | 1'34.243 | 1'34.243 | 3.378 | 0.752 | 169,795 | 42 |
| 22 | 11 S. AL SULAITI | QAT | Pedercini Racing | Kawasaki ZX-10R | 1'36.082 | 1'34.861 | 1'34.861 | 3.996 | 0.618 | 168,689 | 34 |
| 23 | 56 P. SEBESTYÉN | HUN | Team Tóth | Yamaha YZF R1 | 1'34.909 | 1'34.990 | 1'34.909 | 4.044 | 0.048 | 168,604 | 29 |
| 24 | 10 I. TÓTH | HUN | Team Tóth | Yamaha YZF R1 | 1'35.891 | 1'35.946 | 1'35.891 | 5.026 | 0.982 | 166,877 | 45 |



Australian Round, 26-27-28 February 2016

World Superbike - Results Free Practice 2nd Session

| No. | Rider | Nat | Team | Bike | Time | Gap | Rel. | Laps | Speed | |
|-----|--------------------|-----|--------------------------------|------------------------|-----------------|-------|-------|------|---------|--------------|
| | | | | | | | | | Avg | Max |
| 1 | 50 S. GUINTOLI | FRA | Pata Yamaha Official WSBK Team | Yamaha YZF R1 | 1'30.865 | | | 22 | 176,107 | 311,2 |
| 2 | 60 M. VAN DER MARK | NED | Honda World Superbike Team | Honda CBR1000RR SP | 1'31.249 | 0.384 | 0.384 | 32 | 175,366 | 312,1 |
| 3 | 1 J. REA | GBR | Kawasaki Racing Team | Kawasaki ZX-10R | 1'31.324 | 0.459 | 0.075 | 27 | 175,222 | 314,0 |
| 4 | 66 T. SYKES | GBR | Kawasaki Racing Team | Kawasaki ZX-10R | 1'31.363 | 0.498 | 0.039 | 24 | 175,147 | 311,2 |
| 5 | 2 L. CAMIER | GBR | MV Agusta Reparto Corse | MV Agusta 1000 F4 | 1'31.445 | 0.580 | 0.082 | 17 | 174,990 | 301,7 |
| 6 | 69 N. HAYDEN | USA | Honda World Superbike Team | Honda CBR1000RR SP | 1'31.475 | 0.610 | 0.030 | 28 | 174,933 | 314,0 |
| 7 | 34 D. GIUGLIANO | ITA | Aruba.it Racing - Ducati | Ducati 1199 Panigale R | 1'31.527 | 0.662 | 0.052 | 23 | 174,834 | 310,3 |
| 8 | 7 C. DAVIES | GBR | Aruba.it Racing - Ducati | Ducati 1199 Panigale R | 1'31.593 | 0.728 | 0.066 | 24 | 174,708 | 310,3 |
| 9 | 32 L. SAVADORI | ITA | IodaRacing Team | Aprilia RSV4 RF | 1'31.725 | 0.860 | 0.132 | 23 | 174,456 | 311,2 |
| 10 | 22 A. LOWES | GBR | Pata Yamaha Official WSBK Team | Yamaha YZF R1 | 1'31.825 | 0.960 | 0.100 | 21 | 174,266 | 304,2 |
| 11 | 21 M. REITERBERGER | GER | Althea BMW Racing Team | BMW S1000 RR | 1'31.854 | 0.989 | 0.029 | 26 | 174,211 | 311,2 |
| 12 | 40 R. RAMOS | ESP | Team GoEleven | Kawasaki ZX-10R | 1'32.030 | 1.165 | 0.176 | 23 | 173,878 | 307,7 |
| 13 | 81 J. TORRES | ESP | Althea BMW Racing Team | BMW S1000 RR | 1'32.370 | 1.505 | 0.340 | 23 | 173,238 | 314,9 |
| 14 | 46 M. JONES | AUS | Desmo Sport Ducati | Ducati 1199 Panigale R | 1'32.476 | 1.611 | 0.106 | 20 | 173,039 | 299,2 |
| 15 | 15 A. DE ANGELIS | RSM | IodaRacing Team | Aprilia RSV4 RF | 1'32.530 | 1.665 | 0.054 | 20 | 172,939 | 316,7 |
| 16 | 20 S. BARRIER | FRA | Pedercini Racing | Kawasaki ZX-10R | 1'32.553 | 1.688 | 0.023 | 19 | 172,896 | 305,1 |
| 17 | 12 X. FORÉS | ESP | Barni Racing Team | Ducati 1199 Panigale R | 1'32.696 | 1.831 | 0.143 | 2 | 172,629 | 302,5 |
| 18 | 25 J. BROOKES | AUS | Milwaukee BMW | BMW S1000 RR | 1'32.704 | 1.839 | 0.008 | 23 | 172,614 | 306,8 |
| 19 | 54 T. RAZGATLIOGLU | TUR | Grillini Racing Team | Kawasaki ZX-10R | 1'33.459 | 2.594 | 0.755 | 20 | 171,219 | 299,2 |
| 20 | 17 K. ABRAHAM | CZE | Milwaukee BMW | BMW S1000 RR | 1'33.491 | 2.626 | 0.032 | 24 | 171,161 | 313,0 |
| 21 | 9 D. SCHMITTER | SUI | Grillini Racing Team | Kawasaki ZX-10R | 1'34.243 | 3.378 | 0.752 | 26 | 169,795 | 300,0 |
| 22 | 11 S. AL SULAITI | QAT | Pedercini Racing | Kawasaki ZX-10R | 1'34.861 | 3.996 | 0.618 | 21 | 168,689 | 295,1 |
| 23 | 56 P. SEBESTYÉN | HUN | Team Tóth | Yamaha YZF R1 | 1'34.990 | 4.125 | 0.129 | 16 | 168,460 | 296,7 |
| 24 | 10 I. TÓTH | HUN | Team Tóth | Yamaha YZF R1 | 1'35.946 | 5.081 | 0.956 | 24 | 166,781 | 300,0 |

| | | | | |
|-------|------------|-----|-------|------|
| AIR | Humidity: | 61% | Temp: | 21°C |
| TRACK | Condition: | Dry | Temp: | 32°C |

26/02/2016 Start 13:30 End 14:32

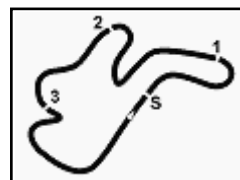
The results are provisional until the end of the time limit for protests and appeals and the completion of the technical checks.

PIRELLI PERFORMING


Official Tyre Supplier



Official Timekeeper



Australian Round, 26-27-28 February 2016 World Superbike - Results Free Practice 2nd Session

Session Highlights

| | | |
|----------|--------------|------------------------------|
| 13.30.14 | | Start |
| 13.36.18 | Forés | Crashed - Rider OK - Turn 12 |
| 13.53.41 | Forés | Medical Center |
| 14.10.45 | | Intervention Time: 57 sec. |
| 14.16.57 | Razgatlioglu | Crashed - Rider OK - Turn 9 |
| 14.17.56 | Razgatlioglu | Re-joined |
| 14.32.10 | | End Of Session |

Fastest Laps Sequence

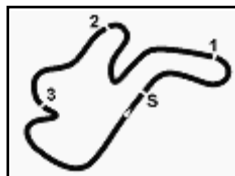
| No. | Rider | Nat | Team | Bike | Local Time | Time | Gap | Avg |
|-----|-----------------|-----|--------------------------------|------------------------|--------------|-----------------|--------|---------|
| 25 | J. BROOKES | AUS | Milwaukee BMW | BMW S1000 RR | 13:31'45.603 | 1'43.131 | | 155,162 |
| 60 | M. VAN DER MARK | NED | Honda World Superbike Team | Honda CBR1000RR SP | 13:31'52.338 | 1'41.175 | -1.956 | 158,162 |
| 25 | J. BROOKES | AUS | Milwaukee BMW | BMW S1000 RR | 13:33'20.332 | 1'34.729 | -6.446 | 168,924 |
| 60 | M. VAN DER MARK | NED | Honda World Superbike Team | Honda CBR1000RR SP | 13:33'24.417 | 1'32.079 | -2.650 | 173,786 |
| 60 | M. VAN DER MARK | NED | Honda World Superbike Team | Honda CBR1000RR SP | 13:36'28.589 | 1'32.001 | -0.078 | 173,933 |
| 1 | J. REA | GBR | Kawasaki Racing Team | Kawasaki ZX-10R | 13:36'47.554 | 1'31.644 | -0.357 | 174,610 |
| 1 | J. REA | GBR | Kawasaki Racing Team | Kawasaki ZX-10R | 13:38'19.162 | 1'31.608 | -0.036 | 174,679 |
| 7 | C. DAVIES | GBR | Aruba.it Racing - Ducati | Ducati 1199 Panigale R | 13:38'22.459 | 1'31.593 | -0.015 | 174,708 |
| 60 | M. VAN DER MARK | NED | Honda World Superbike Team | Honda CBR1000RR SP | 13:39'32.181 | 1'31.326 | -0.267 | 175,218 |
| 60 | M. VAN DER MARK | NED | Honda World Superbike Team | Honda CBR1000RR SP | 13:42'34.970 | 1'31.325 | -0.001 | 175,220 |
| 60 | M. VAN DER MARK | NED | Honda World Superbike Team | Honda CBR1000RR SP | 13:44'06.219 | 1'31.249 | -0.076 | 175,366 |
| 50 | S. GUINTOLI | FRA | Pata Yamaha Official WSBK Team | Yamaha YZF R1 | 14:13'23.372 | 1'30.865 | -0.384 | 176,107 |

26/02/2016 Start 13:30 End 14:32

The results are provisional until the end of the time limit for protests and appeals and the completion of the technical checks.

FCR PERDIA TIMING





Phillip Island 4.445 m

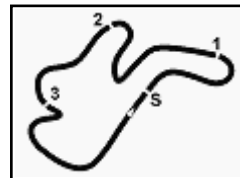
Australian Round, 26-27-28 February 2016
World Superbike - Best Sector & Speed Free Practice 2nd Session
Best Lap

| | | | |
|----|--------------------|------------------------|----------|
| 1 | 50 S. GUINTOLI | Yamaha YZF R1 | 1'30.865 |
| 2 | 60 M. VAN DER MARK | Honda CBR1000RR SP | 1'31.249 |
| 3 | 1 J. REA | Kawasaki ZX-10R | 1'31.324 |
| 4 | 66 T. SYKES | Kawasaki ZX-10R | 1'31.363 |
| 5 | 2 L. CAMIER | MV Austa 1000 F4 | 1'31.445 |
| 6 | 69 N. HAYDEN | Honda CBR1000RR SP | 1'31.475 |
| 7 | 34 D. GIUGLIANO | Ducati 1199 Panigale R | 1'31.527 |
| 8 | 7 C. DAVIES | Ducati 1199 Panigale R | 1'31.593 |
| 9 | 32 L. SAVADORI | Aorilia RS4 RF | 1'31.725 |
| 10 | 22 A. LOWES | Yamaha YZF R1 | 1'31.825 |
| 11 | 21 M. REITERBERGER | BMW S1000 RR | 1'31.854 |
| 12 | 40 R. RAMOS | Kawasaki ZX-10R | 1'32.030 |
| 13 | 81 J. TORRES | BMW S1000 RR | 1'32.370 |
| 14 | 46 M. JONES | Ducati 1199 Panigale R | 1'32.476 |
| 15 | 15 A. DE ANGELIS | Aorilia RS4 RF | 1'32.530 |
| 16 | 20 S. BARRIER | Kawasaki ZX-10R | 1'32.553 |
| 17 | 12 X. FORÉS | Ducati 1199 Panigale R | 1'32.696 |
| 18 | 25 J. BROOKES | BMW S1000 RR | 1'32.704 |
| 19 | 54 T. RAZGATLIOGLU | Kawasaki ZX-10R | 1'33.459 |
| 20 | 17 K. ABRAHAM | BMW S1000 RR | 1'33.491 |
| 21 | 9 D. SCHMITTER | Kawasaki ZX-10R | 1'34.243 |
| 22 | 11 S. AL SULAITI | Kawasaki ZX-10R | 1'34.861 |
| 23 | 56 P. SEBESTYÉN | Yamaha YZF R1 | 1'34.990 |
| 24 | 10 I. TÓTH | Yamaha YZF R1 | 1'35.946 |

Top Speeds

| | | | |
|----|--------------------|------------------------|-------|
| 1 | 15 A. DE ANGELIS | Aorilia RS4 RF | 316.7 |
| 2 | 81 J. TORRES | BMW S1000 RR | 314.9 |
| 3 | 1 J. REA | Kawasaki ZX-10R | 314.0 |
| 4 | 69 N. HAYDEN | Honda CBR1000RR SP | 314.0 |
| 5 | 17 K. ABRAHAM | BMW S1000 RR | 313.0 |
| 6 | 60 M. VAN DER MARK | Honda CBR1000RR SP | 312.1 |
| 7 | 21 M. REITERBERGER | BMW S1000 RR | 311.2 |
| 8 | 66 T. SYKES | Kawasaki ZX-10R | 311.2 |
| 9 | 50 S. GUINTOLI | Yamaha YZF R1 | 311.2 |
| 10 | 32 L. SAVADORI | Aorilia RS4 RF | 311.2 |
| 11 | 34 D. GIUGLIANO | Ducati 1199 Panigale R | 310.3 |
| 12 | 7 C. DAVIES | Ducati 1199 Panigale R | 310.3 |
| 13 | 40 R. RAMOS | Kawasaki ZX-10R | 307.7 |
| 14 | 25 J. BROOKES | BMW S1000 RR | 306.8 |
| 15 | 20 S. BARRIER | Kawasaki ZX-10R | 305.1 |
| 16 | 22 A. LOWES | Yamaha YZF R1 | 304.2 |
| 17 | 12 X. FORÉS | Ducati 1199 Panigale R | 302.5 |
| 18 | 2 L. CAMIER | MV Austa 1000 F4 | 301.7 |
| 19 | 10 I. TÓTH | Yamaha YZF R1 | 300.0 |
| 20 | 9 D. SCHMITTER | Kawasaki ZX-10R | 300.0 |
| 21 | 54 T. RAZGATLIOGLU | Kawasaki ZX-10R | 299.2 |
| 22 | 46 M. JONES | Ducati 1199 Panigale R | 299.2 |
| 23 | 56 P. SEBESTYÉN | Yamaha YZF R1 | 296.7 |
| 24 | 11 S. AL SULAITI | Kawasaki ZX-10R | 295.1 |

| Seg. 1 | | Seg. 2 | | Seg. 3 | | Seg. 4 | | Seg. 5 | | | | | | |
|--------|--------------------|--------|----|--------------------|--------|--------|--------------------|--------|----|--------------------|--------|----|--------------------|--------|
| 1 | 15 A. DE ANGELIS | 3.126 | 1 | 50 S. GUINTOLI | 18.502 | 1 | 50 S. GUINTOLI | 26.307 | 1 | 1 J. REA | 17.441 | 1 | 50 S. GUINTOLI | 25.371 |
| 2 | 81 J. TORRES | 3.140 | 2 | 60 M. VAN DER MAR | 18.523 | 2 | 1 J. REA | 26.333 | 2 | 60 M. VAN DER MAR | 17.448 | 2 | 32 L. SAVADORI | 25.394 |
| 3 | 32 L. SAVADORI | 3.156 | 3 | 22 A. LOWES | 18.568 | 3 | 7 C. DAVIES | 26.349 | 3 | 50 S. GUINTOLI | 17.460 | 3 | 69 N. HAYDEN | 25.416 |
| 4 | 69 N. HAYDEN | 3.157 | 4 | 2 L. CAMIER | 18.592 | 4 | 2 L. CAMIER | 26.386 | 4 | 2 L. CAMIER | 17.468 | 4 | 60 M. VAN DER MAR | 25.529 |
| 5 | 1 J. REA | 3.159 | 5 | 7 C. DAVIES | 18.607 | 5 | 22 A. LOWES | 26.395 | 5 | 66 T. SYKES | 17.477 | 5 | 66 T. SYKES | 25.536 |
| 6 | 17 K. ABRAHAM | 3.163 | 6 | 34 D. GIUGLIANO | 18.646 | 6 | 34 D. GIUGLIANO | 26.397 | 6 | 12 X. FORÉS | 17.503 | 6 | 34 D. GIUGLIANO | 25.547 |
| 7 | 21 M. REITERBERG | 3.165 | 7 | 1 J. REA | 18.654 | 7 | 60 M. VAN DER MAR | 26.408 | 7 | 34 D. GIUGLIANO | 17.523 | 7 | 1 J. REA | 25.555 |
| 8 | 50 S. GUINTOLI | 3.167 | 8 | 66 T. SYKES | 18.654 | 8 | 32 L. SAVADORI | 26.430 | 8 | 7 C. DAVIES | 17.576 | 8 | 12 X. FORÉS | 25.609 |
| 9 | 60 M. VAN DER MAR | 3.168 | 9 | 46 M. JONES | 18.695 | 9 | 69 N. HAYDEN | 26.432 | 9 | 81 J. TORRES | 17.577 | 9 | 21 M. REITERBERG | 25.648 |
| 10 | 66 T. SYKES | 3.174 | 10 | 21 M. REITERBERG | 18.729 | 10 | 66 T. SYKES | 26.443 | 10 | 21 M. REITERBERG | 17.604 | 10 | 22 A. LOWES | 25.650 |
| 11 | 34 D. GIUGLIANO | 3.185 | 11 | 69 N. HAYDEN | 18.747 | 11 | 21 M. REITERBERG | 26.477 | 11 | 69 N. HAYDEN | 17.608 | 11 | 2 L. CAMIER | 25.669 |
| 12 | 7 C. DAVIES | 3.193 | 12 | 20 S. BARRIER | 18.799 | 12 | 12 X. FORÉS | 26.563 | 12 | 22 A. LOWES | 17.609 | 12 | 81 J. TORRES | 25.677 |
| 13 | 40 R. RAMOS | 3.218 | 13 | 25 J. BROOKES | 18.810 | 13 | 40 R. RAMOS | 26.610 | 13 | 40 R. RAMOS | 17.619 | 13 | 40 R. RAMOS | 25.723 |
| 14 | 25 J. BROOKES | 3.222 | 14 | 40 R. RAMOS | 18.821 | 14 | 46 M. JONES | 26.744 | 14 | 32 L. SAVADORI | 17.641 | 14 | 7 C. DAVIES | 25.723 |
| 15 | 22 A. LOWES | 3.249 | 15 | 17 K. ABRAHAM | 18.855 | 15 | 20 S. BARRIER | 26.764 | 15 | 15 A. DE ANGELIS | 17.687 | 15 | 15 A. DE ANGELIS | 25.774 |
| 16 | 20 S. BARRIER | 3.257 | 16 | 81 J. TORRES | 18.861 | 16 | 81 J. TORRES | 26.816 | 16 | 46 M. JONES | 17.692 | 16 | 46 M. JONES | 25.851 |
| 17 | 12 X. FORÉS | 3.264 | 17 | 15 A. DE ANGELIS | 18.895 | 17 | 15 A. DE ANGELIS | 26.829 | 17 | 20 S. BARRIER | 17.764 | 17 | 20 S. BARRIER | 25.853 |
| 18 | 2 L. CAMIER | 3.280 | 18 | 12 X. FORÉS | 18.903 | 18 | 25 J. BROOKES | 26.922 | 18 | 25 J. BROOKES | 17.790 | 18 | 25 J. BROOKES | 25.914 |
| 19 | 54 T. RAZGATLIOGLU | 3.297 | 19 | 32 L. SAVADORI | 18.973 | 19 | 54 T. RAZGATLIOGLU | 26.948 | 19 | 17 K. ABRAHAM | 17.802 | 19 | 54 T. RAZGATLIOGLU | 26.003 |
| 20 | 9 D. SCHMITTER | 3.303 | 20 | 9 D. SCHMITTER | 19.175 | 20 | 17 K. ABRAHAM | 26.994 | 20 | 54 T. RAZGATLIOGLU | 17.873 | 20 | 17 K. ABRAHAM | 26.211 |
| 21 | 46 M. JONES | 3.305 | 21 | 54 T. RAZGATLIOGLU | 19.188 | 21 | 9 D. SCHMITTER | 27.064 | 21 | 9 D. SCHMITTER | 17.968 | 21 | 9 D. SCHMITTER | 26.263 |
| 22 | 10 I. TÓTH | 3.306 | 22 | 56 P. SEBESTYÉN | 19.287 | 22 | 11 S. AL SULAITI | 27.258 | 22 | 56 P. SEBESTYÉN | 18.143 | 22 | 56 P. SEBESTYÉN | 26.402 |
| 23 | 56 P. SEBESTYÉN | 3.310 | 23 | 10 I. TÓTH | 19.430 | 23 | 56 P. SEBESTYÉN | 27.520 | 23 | 11 S. AL SULAITI | 18.164 | 23 | 11 S. AL SULAITI | 26.502 |
| 24 | 11 S. AL SULAITI | 3.351 | 24 | 11 S. AL SULAITI | 19.474 | 24 | 10 I. TÓTH | 27.903 | 24 | 10 I. TÓTH | 18.294 | 24 | 10 I. TÓTH | 26.746 |

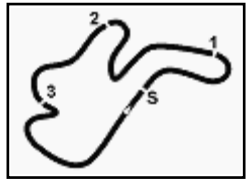


Phillip Island 4.445 m

1 / 1

Australian Round, 26-27-28 February 2016 World Superbike - Ideal Times Free Practice 2nd Session

| No. Rider | Nat | Bike | Seg. 1 Diff. 1 | Seg. 2 Diff. 2 | Seg. 3 Diff. 3 | Seg. 4 Diff. 4 | Seg. 5 Diff. 5 | Ideal Time Best Lap | Pos. | Diff. |
|---------------------------|-----|------------------------|-------------------|-------------------|-------------------|-------------------|-------------------|------------------------|------|-------|
| 1 50 S. GUINTOLI | FRA | Yamaha YZF R1 | 3.167 0.058 | 18.502 | 26.307 | 17.460 | 25.371 | 1'30.807 1'30.865 | 1 | 0.058 |
| 2 60 M. VAN DER MARK | NED | Honda CBR1000RR SP | 3.168 0.057 | 18.523 | 26.408 0.093 | 17.448 0.016 | 25.529 0.007 | 1'31.076 1'31.249 | 2 | 0.173 |
| 3 1 J. REA | GBR | Kawasaki ZX-10R | 3.159 0.009 | 18.654 0.060 | 26.333 0.014 | 17.441 0.073 | 25.555 0.026 | 1'31.142 1'31.324 | 3 | 0.182 |
| 4 66 T. SYKES | GBR | Kawasaki ZX-10R | 3.174 0.029 | 18.654 0.050 | 26.443 | 17.477 | 25.536 | 1'31.284 1'31.363 | 4 | 0.079 |
| 5 34 D. GIUGLIANO | ITA | Ducati 1199 Panigale R | 3.185 0.069 | 18.646 | 26.397 0.035 | 17.523 0.008 | 25.547 0.117 | 1'31.298 1'31.527 | 7 | 0.229 |
| 6 69 N. HAYDEN | USA | Honda CBR1000RR SP | 3.157 0.069 | 18.747 0.046 | 26.432 | 17.608 | 25.416 | 1'31.360 1'31.475 | 6 | 0.115 |
| 7 2 L. CAMIER | GBR | MV Agusta 1000 F4 | 3.280 0.050 | 18.592 | 26.386 | 17.468 | 25.669 | 1'31.395 1'31.445 | 5 | 0.050 |
| 8 7 C. DAVIES | GBR | Ducati 1199 Panigale R | 3.193 0.045 | 18.607 | 26.349 0.096 | 17.576 | 25.723 0.004 | 1'31.448 1'31.593 | 8 | 0.145 |
| 9 22 A. LOWES | GBR | Yamaha YZF R1 | 3.249 0.039 | 18.568 0.274 | 26.395 0.041 | 17.609 | 25.650 | 1'31.471 1'31.825 | 10 | 0.354 |
| 10 32 L. SAVADORI | ITA | Aprilia RSV4 RF | 3.156 0.035 | 18.973 | 26.430 | 17.641 0.096 | 25.394 | 1'31.594 1'31.725 | 9 | 0.131 |
| 11 21 M. REITERBERGER | GER | BMW S1000 RR | 3.165 0.031 | 18.729 0.070 | 26.477 0.065 | 17.604 0.065 | 25.648 | 1'31.623 1'31.854 | 11 | 0.231 |
| 12 12 X. FORÉS | ESP | Ducati 1199 Panigale R | 3.264 0.001 | 18.903 0.357 | 26.563 0.354 | 17.503 0.142 | 25.609 | 1'31.842 1'32.696 | 17 | 0.854 |
| 13 40 R. RAMOS | ESP | Kawasaki ZX-10R | 3.218 0.015 | 18.821 0.024 | 26.610 | 17.619 | 25.723 | 1'31.991 1'32.030 | 12 | 0.039 |
| 14 81 J. TORRES | ESP | BMW S1000 RR | 3.140 0.064 | 18.861 0.041 | 26.816 | 17.577 0.194 | 25.677 | 1'32.071 1'32.370 | 13 | 0.299 |
| 15 46 M. JONES | AUS | Ducati 1199 Panigale R | 3.305 0.038 | 18.695 0.033 | 26.744 | 17.692 0.105 | 25.851 0.013 | 1'32.287 1'32.476 | 14 | 0.189 |
| 16 15 A. DE ANGELIS | RSM | Aprilia RSV4 RF | 3.126 0.028 | 18.895 0.039 | 26.829 0.097 | 17.687 0.034 | 25.774 0.021 | 1'32.311 1'32.530 | 15 | 0.219 |
| 17 20 S. BARRIER | FRA | Kawasaki ZX-10R | 3.257 0.012 | 18.799 | 26.764 0.029 | 17.764 | 25.853 0.075 | 1'32.437 1'32.553 | 16 | 0.116 |
| 18 25 J. BROOKES | AUS | BMW S1000 RR | 3.222 0.032 | 18.810 | 26.922 0.014 | 17.790 | 25.914 | 1'32.658 1'32.704 | 18 | 0.046 |
| 19 17 K. ABRAHAM | CZE | BMW S1000 RR | 3.163 0.021 | 18.855 0.227 | 26.994 | 17.802 0.129 | 26.211 0.089 | 1'33.025 1'33.491 | 20 | 0.466 |
| 20 54 T. RAZGATLIOGLU | TUR | Kawasaki ZX-10R | 3.297 0.039 | 19.188 0.041 | 26.948 0.049 | 17.873 0.021 | 26.003 | 1'33.309 1'33.459 | 19 | 0.150 |
| 21 9 D. SCHMITTER | SUI | Kawasaki ZX-10R | 3.303 0.032 | 19.175 | 27.064 0.109 | 17.968 0.153 | 26.263 0.176 | 1'33.773 1'34.243 | 21 | 0.470 |
| 22 56 P. SEBESTYÉN | HUN | Yamaha YZF R1 | 3.310 0.024 | 19.287 0.218 | 27.520 0.070 | 18.143 | 26.402 0.016 | 1'34.662 1'34.990 | 23 | 0.328 |
| 23 11 S. AL SULAITI | QAT | Kawasaki ZX-10R | 3.351 0.045 | 19.474 | 27.258 0.067 | 18.164 | 26.502 | 1'34.749 1'34.861 | 22 | 0.112 |
| 24 10 I. TÓTH | HUN | Yamaha YZF R1 | 3.306 0.031 | 19.430 0.179 | 27.903 | 18.294 0.032 | 26.746 0.025 | 1'35.679 1'35.946 | 24 | 0.267 |
| Overall Ideal Time | | | 3.126 | 18.502 | 26.307 | 17.441 | 25.371 | 1'30.747 | | |



Phillip Island 4.445 m

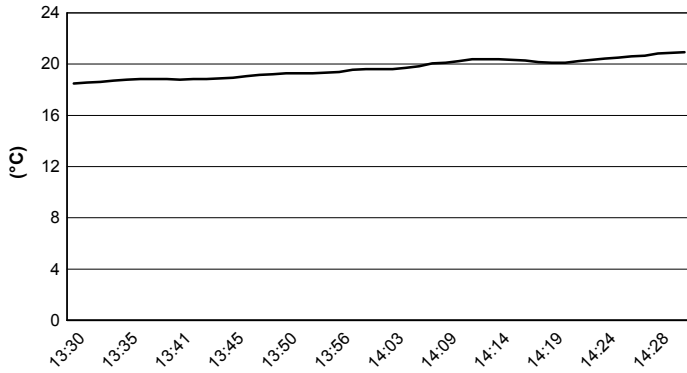
Australian Round, 26-27-28 February 2016

World Superbike - Weather Report Free Practice 2nd Session

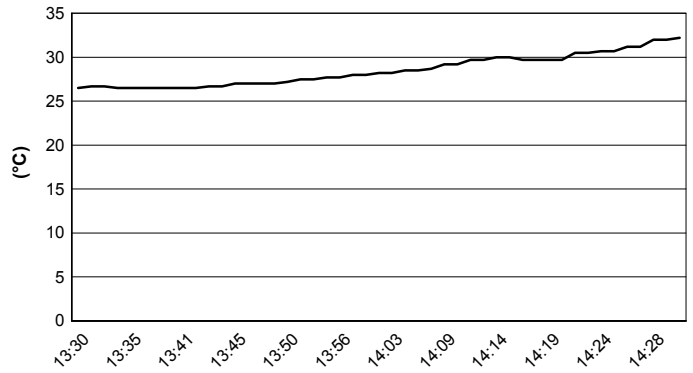
Session started 13:30

Session ended 14:32

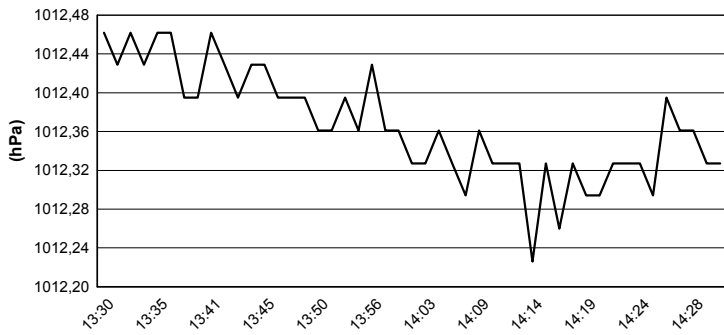
Air Temperature



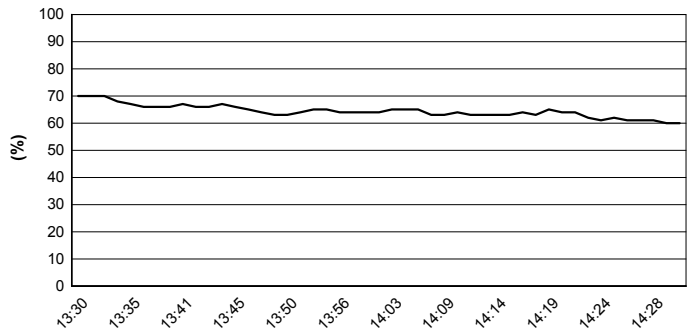
Track Temperature



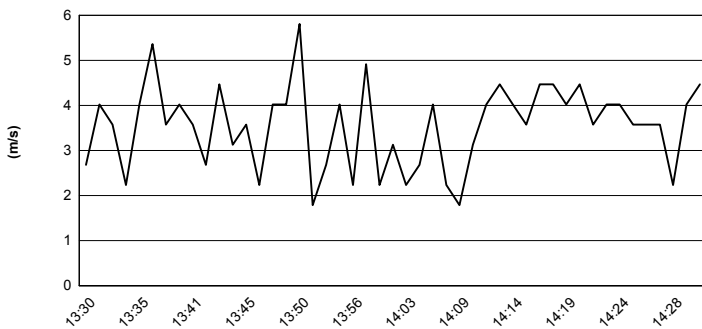
Air Pressure



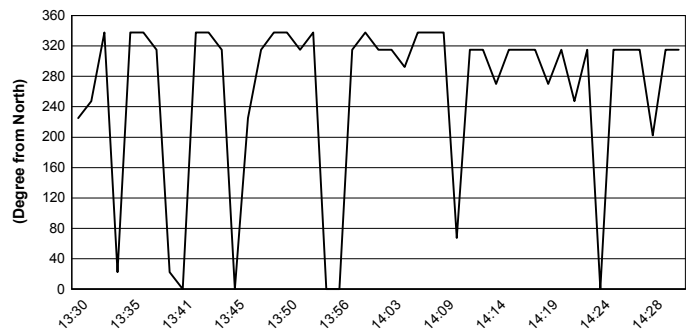
Humidity

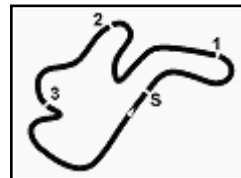


Wind Speed



Wind Direction





Phillip Island 4.445 m

Australian Round, 26-27-28 February 2016
World Superbike - Superpoles Entry List
Superpole 1

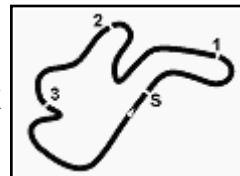
| No. | Rider | Nat | Team | Bike | Time |
|-----|---------------------------|-----|--------------------------------|------------------------|-----------------|
| 11 | 22 A. LOWES | GBR | Pata Yamaha Official WSBK Team | Yamaha YZF R1 | 1'31.825 |
| 12 | 40 R. RAMOS | ESP | Team GoEleven | Kawasaki ZX-10R | 1'32.030 |
| 13 | 12 X. FORÉS | ESP | Barni Racing Team | Ducati 1199 Panigale R | 1'32.070 |
| 14 | 81 J. TORRES | ESP | Althea BMW Racing Team | BMW S1000 RR | 1'32.370 |
| 15 | 46 M. JONES | AUS | Desmo Sport Ducati | Ducati 1199 Panigale R | 1'32.476 |
| 16 | 15 A. DE ANGELIS | RSM | IodaRacing Team | Aprilia RSV4 RF | 1'32.530 |
| 17 | 20 S. BARRIER | FRA | Pedercini Racing | Kawasaki ZX-10R | 1'32.553 |
| 18 | 25 J. BROOKES | AUS | Milwaukee BMW | BMW S1000 RR | 1'32.704 |
| 19 | 54 T. RAZGATLIOGLU | TUR | Grillini Racing Team | Kawasaki ZX-10R | 1'33.459 |
| 20 | 17 K. ABRAHAM | CZE | Milwaukee BMW | BMW S1000 RR | 1'33.491 |
| 21 | 9 D. SCHMITTER | SUI | Grillini Racing Team | Kawasaki ZX-10R | 1'34.243 |
| 22 | 11 S. AL SULAITI | QAT | Pedercini Racing | Kawasaki ZX-10R | 1'34.861 |
| 23 | 56 P. SEBESTYÉN | HUN | Team Tóth | Yamaha YZF R1 | 1'34.909 |
| 24 | 10 I. TÓTH | HUN | Team Tóth | Yamaha YZF R1 | 1'35.891 |

Superpole 2

| No. | Rider | Nat | Team | Bike | Time |
|-----|---------------------------|-----|--------------------------------|------------------------|-----------------|
| 1 | 50 S. GUINTOLI | FRA | Pata Yamaha Official WSBK Team | Yamaha YZF R1 | 1'30.865 |
| 2 | 60 M. VAN DER MARK | NED | Honda World Superbike Team | Honda CBR1000RR SP | 1'31.249 |
| 3 | 1 J. REA | GBR | Kawasaki Racing Team | Kawasaki ZX-10R | 1'31.324 |
| 4 | 66 T. SYKES | GBR | Kawasaki Racing Team | Kawasaki ZX-10R | 1'31.363 |
| 5 | 2 L. CAMIER | GBR | MV Agusta Reparto Corse | MV Agusta 1000 F4 | 1'31.445 |
| 6 | 69 N. HAYDEN | USA | Honda World Superbike Team | Honda CBR1000RR SP | 1'31.475 |
| 7 | 34 D. GIUGLIANO | ITA | Aruba.it Racing - Ducati | Ducati 1199 Panigale R | 1'31.527 |
| 8 | 7 C. DAVIES | GBR | Aruba.it Racing - Ducati | Ducati 1199 Panigale R | 1'31.593 |
| 9 | 32 L. SAVADORI | ITA | IodaRacing Team | Aprilia RSV4 RF | 1'31.725 |
| 10 | 21 M. REITERBERGER | GER | Althea BMW Racing Team | BMW S1000 RR | 1'31.792 |

 *
 *

* These positions are assigned to the 1st and 2nd rider classified in Superpole 1



Phillip Island 4.445 m

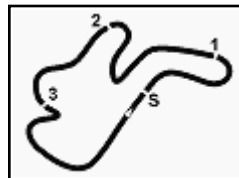
Australian Round, 26-27-28 February 2016

World Superbike - Best Laps & Speeds

102/01

1 / 2

| No. | Rider | | Best Lap | | FP1 | | FP2 | |
|-----|-------|-----------------------------|----------|-----|----------|-------|----------|-------|
| | Nat | Bike | | | laps | speed | laps | speed |
| 1 | 50 | GUINTOLI Sylvain | 1'30.865 | | 1'31.640 | | 1'30.865 | |
| | FRA | Yamaha YZF R1 | 41 | 311 | 19 | 309 | 22 | 311 |
| 2 | 60 | VAN DER MARK Michael | 1'31.249 | | 1'31.826 | | 1'31.249 | |
| | NED | Honda CBR1000RR SP | 55 | 312 | 23 | 310 | 32 | 312 |
| 3 | 1 | REA Jonathan | 1'31.324 | | 1'31.641 | | 1'31.324 | |
| | GBR | Kawasaki ZX-10R | 48 | 314 | 21 | 314 | 27 | 314 |
| 4 | 66 | SYKES Tom | 1'31.363 | | 1'31.543 | | 1'31.363 | |
| | GBR | Kawasaki ZX-10R | 44 | 311 | 20 | 309 | 24 | 311 |
| 5 | 2 | CAMIER Leon | 1'31.445 | | 1'31.650 | | 1'31.445 | |
| | GBR | MV Agusta 1000 F4 | 32 | 303 | 15 | 303 | 17 | 302 |
| 6 | 69 | HAYDEN Nicky | 1'31.475 | | 1'31.789 | | 1'31.475 | |
| | USA | Honda CBR1000RR SP | 47 | 314 | 19 | 309 | 28 | 314 |
| 7 | 34 | GIUGLIANO Davide | 1'31.527 | | 1'31.844 | | 1'31.527 | |
| | ITA | Ducati 1199 Panigale R | 41 | 310 | 18 | 306 | 23 | 310 |
| 8 | 7 | DAVIES Chaz | 1'31.593 | | 1'31.718 | | 1'31.593 | |
| | GBR | Ducati 1199 Panigale R | 43 | 310 | 19 | 309 | 24 | 310 |
| 9 | 32 | SAVADORI Lorenzo | 1'31.725 | | 1'32.121 | | 1'31.725 | |
| | ITA | Aprilia RSV4 RF | 42 | 312 | 19 | 312 | 23 | 311 |
| 10 | 21 | REITERBERGER Markus | 1'31.792 | | 1'31.792 | | 1'31.854 | |
| | GER | BMW S1000 RR | 46 | 311 | 20 | 309 | 26 | 311 |
| 11 | 22 | LOWES Alex | 1'31.825 | | 1'31.922 | | 1'31.825 | |
| | GBR | Yamaha YZF R1 | 39 | 304 | 18 | 304 | 21 | 304 |
| 12 | 40 | RAMOS Román | 1'32.030 | | 1'32.689 | | 1'32.030 | |
| | ESP | Kawasaki ZX-10R | 39 | 308 | 16 | 305 | 23 | 308 |
| 13 | 12 | FORÉS Xavi | 1'32.070 | | 1'32.070 | | 1'32.696 | |
| | ESP | Ducati 1199 Panigale R | 21 | 304 | 19 | 304 | 2 | 303 |
| 14 | 81 | TORRES Jordi | 1'32.370 | | 1'32.383 | | 1'32.370 | |
| | ESP | BMW S1000 RR | 35 | 315 | 12 | 314 | 23 | 315 |
| 15 | 46 | JONES Mike | 1'32.476 | | 1'32.821 | | 1'32.476 | |
| | AUS | Ducati 1199 Panigale R | 36 | 299 | 16 | 296 | 20 | 299 |
| 16 | 15 | DE ANGELIS Alex | 1'32.530 | | 1'32.827 | | 1'32.530 | |
| | RSM | Aprilia RSV4 RF | 41 | 317 | 21 | 316 | 20 | 317 |
| 17 | 20 | BARRIER Sylvain | 1'32.553 | | 1'32.852 | | 1'32.553 | |
| | FRA | Kawasaki ZX-10R | 36 | 306 | 17 | 306 | 19 | 305 |
| 18 | 25 | BROOKES Joshua | 1'32.704 | | 1'33.354 | | 1'32.704 | |
| | AUS | BMW S1000 RR | 43 | 307 | 20 | 303 | 23 | 307 |
| 19 | 54 | RAZGATLIOGLU Toprak | 1'33.459 | | 1'33.844 | | 1'33.459 | |
| | TUR | Kawasaki ZX-10R | 45 | 301 | 25 | 301 | 20 | 299 |
| 20 | 17 | ABRAHAM Karel | 1'33.491 | | 1'34.277 | | 1'33.491 | |
| | CZE | BMW S1000 RR | 36 | 313 | 12 | 307 | 24 | 313 |
| 21 | 9 | SCHMITTER Dominic | 1'34.243 | | 1'34.347 | | 1'34.243 | |
| | SUI | Kawasaki ZX-10R | 42 | 300 | 16 | 299 | 26 | 300 |



Phillip Island 4.445 m

Australian Round, 26-27-28 February 2016 World Superbike - Best Laps & Speeds

2 / 2

| No. | Rider | | Best Lap | FP1 | | FP2 | |
|-----|-------|---------------------|----------|----------|----------|------|-------|
| | Nat | Bike | | laps | speed | laps | speed |
| 22 | 11 | AL SULAITI Saeed | 1'34.861 | 1'36.082 | 1'34.861 | | |
| | | QAT Kawasaki ZX-10R | 34 295 | 13 290 | 21 | 295 | |
| 23 | 56 | SEBESTYÉN Péter | 1'34.909 | 1'34.909 | 1'34.990 | | |
| | | HUN Yamaha YZF R1 | 29 297 | 13 295 | 16 | 297 | |
| 24 | 10 | TÓTH Imre | 1'35.891 | 1'35.891 | 1'35.946 | | |
| | | HUN Yamaha YZF R1 | 45 302 | 21 | 302 | 24 | 300 |