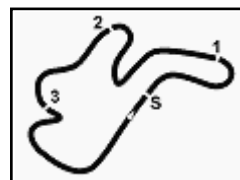


Phillip Island 4.445 m

## Australian Round, 26-27-28 February 2016

### World Supersport - Free Practices Combined Results

No.	Rider	Nat	Team	Bike	FP1	FP2	Time	Gap	Rel.	Avg	Laps
1	<b>1 K. SOFUOGLU</b>	TUR	Kawasaki Puccetti Racing	Kawasaki ZX-6R	<b>1'33.664</b>		<b>1'33.664</b>			170,845	22
2	<b>16 J. CLUZEL</b>	FRA	MV Agusta Reparto Corse	MV Agusta F3 675	<b>1'33.877</b>	1'34.999	<b>1'33.877</b>	0.213	0.213	170,457	24
3	<b>21 R. KRUMMENACHER</b>	SUI	Kawasaki Puccetti Racing	Kawasaki ZX-6R	1'34.018	<b>1'33.878</b>	<b>1'33.878</b>	0.214	0.001	170,455	50
4	<b>87 L. ZANETTI</b>	ITA	MV Agusta Reparto Corse	MV Agusta F3 675	<b>1'34.032</b>	1'34.236	<b>1'34.032</b>	0.368	0.154	170,176	36
5	<b>77 K. RYDE</b>	GBR	Ranieri Med - SC Racing	Yamaha YZF R6	<b>1'34.202</b>	1'35.276	<b>1'34.202</b>	0.538	0.170	169,869	41
6	<b>2 P. JACOBSEN</b>	USA	Honda World Supersport Team	Honda CBR600RR	1'34.427	<b>1'34.256</b>	<b>1'34.256</b>	0.592	0.054	169,772	47
7	<b>25 A. BALDOLINI</b>	ITA	Race Department ATK#25	MV Agusta F3 675	<b>1'34.398</b>	1'34.623	<b>1'34.398</b>	0.734	0.142	169,516	39
8	<b>19 K. WAHR</b>	GER	Gemar Balloons - Team Lorini	Honda CBR600RR	<b>1'34.442</b>	1'34.698	<b>1'34.442</b>	0.778	0.044	169,437	30
9	<b>111 K. SMITH</b>	GBR	CIA Landlord Insurance Honda	Honda CBR600RR	<b>1'34.540</b>	1'34.785	<b>1'34.540</b>	0.876	0.098	169,262	45
10	<b>88 N. TEROL</b>	ESP	Schmidt Racing	MV Agusta F3 675	<b>1'34.600</b>	1'35.136	<b>1'34.600</b>	0.936	0.060	169,154	46
11	<b>4 G. REA</b>	GBR	GRT Racing Team	MV Agusta F3 675	1'36.273	<b>1'34.616</b>	<b>1'34.616</b>	0.952	0.016	169,126	44
12	<b>13 A. WEST</b>	AUS	Tribeca Racing	Yamaha YZF R6	1'34.901	<b>1'34.672</b>	<b>1'34.672</b>	1.008	0.056	169,026	39
13	<b>11 C. GAMARINO</b>	ITA	Team GoEleven	Kawasaki ZX-6R	1'34.946	<b>1'34.716</b>	<b>1'34.716</b>	1.052	0.044	168,947	43
14	<b>63 Z. KHAIRUDDIN</b>	MAS	Orelac Racing VerdNatura	Kawasaki ZX-6R	1'34.902	<b>1'34.795</b>	<b>1'34.795</b>	1.131	0.079	168,806	47
15	<b>64 F. CARICASULO</b>	ITA	Bardahl Evan Bros. Honda Racing	Honda CBR600RR	<b>1'35.086</b>	1'35.108	<b>1'35.086</b>	1.422	0.291	168,290	47
16	<b>81 L. STAPLEFORD</b>	GBR	CIA Landlord Insurance Profile Honda	Honda CBR600RR	<b>1'35.133</b>	1'35.287	<b>1'35.133</b>	1.469	0.047	168,207	47
17	<b>69 O. JEZEK</b>	CZE	Team GoEleven	Kawasaki ZX-6R	1'35.399	<b>1'35.379</b>	<b>1'35.379</b>	1.715	0.246	167,773	41
18	<b>44 R. ROLFO</b>	ITA	Team Factory Vamag	MV Agusta F3 675	<b>1'35.476</b>	1'36.130	<b>1'35.476</b>	1.812	0.097	167,602	28
19	<b>68 G. SCOTT</b>	AUS	Gemar Balloons - Team Lorini	Honda CBR600RR	1'35.595	<b>1'35.510</b>	<b>1'35.510</b>	1.846	0.034	167,543	50
20	<b>78 H. OKUBO</b>	JPN	CIA Landlord Insurance Honda	Honda CBR600RR	1'35.758	<b>1'35.578</b>	<b>1'35.578</b>	1.914	0.068	167,423	46
21	<b>41 A. WAGNER</b>	AUS	GRT Racing Team	MV Agusta F3 675	1'36.454	<b>1'35.710</b>	<b>1'35.710</b>	2.046	0.132	167,193	23
22	<b>10 N. CALERO</b>	ESP	Orelac Racing VerdNatura	Kawasaki ZX-6R	1'36.885	<b>1'35.879</b>	<b>1'35.879</b>	2.215	0.169	166,898	47
23	<b>5 M. LEVY</b>	AUS	Landbridge Racing	Yamaha YZF R6	1'35.994	<b>1'35.962</b>	<b>1'35.962</b>	2.298	0.083	166,754	48
24	<b>48 A. PHILLIS</b>	AUS	AARK Racing	Honda CBR600RR	<b>1'36.315</b>	1'36.753	<b>1'36.315</b>	2.651	0.353	166,142	50
25	<b>30 K. BURNS</b>	AUS	Burns Racing	Suzuki GSX-R600	<b>1'36.416</b>	1'36.763	<b>1'36.416</b>	2.752	0.101	165,968	32
26	<b>35 S. HILL</b>	GBR	CIA Landlord Insurance Honda	Honda CBR600RR	1'37.531	<b>1'37.139</b>	<b>1'37.139</b>	3.475	0.723	164,733	46
27	<b>83 L. EPIS</b>	AUS	Response RE Racing	Kawasaki ZX-6R	1'38.967	<b>1'38.865</b>	<b>1'38.865</b>	5.201	1.726	161,857	54



## Australian Round, 26-27-28 February 2016

### World Supersport - Results Free Practice 2nd Session

No.	Rider	Nat	Team	Bike	Time	Gap	Rel.	Laps	Speed	
									Avg	Max
1	21 R. KRUMMENACHER	SUI	Kawasaki Puccetti Racing	Kawasaki ZX-6R	<b>1'33.878</b>			26	170,455	<b>268,7</b>
2	87 L. ZANETTI	ITA	MV Agusta Reparto Corse	MV Agusta F3 675	<b>1'34.236</b>	0.358	0.358	19	169,808	<b>271,4</b>
3	2 P. JACOBSEN	USA	Honda World Supersport Team	Honda CBR600RR	<b>1'34.256</b>	0.378	0.020	24	169,772	<b>270,0</b>
4	4 G. REA	GBR	GRT Racing Team	MV Agusta F3 675	<b>1'34.616</b>	0.738	0.360	24	169,126	<b>263,4</b>
5	25 A. BALDOLINI	ITA	Race Department ATK#25	MV Agusta F3 675	<b>1'34.623</b>	0.745	0.007	16	169,113	<b>264,1</b>
6	13 A. WEST	AUS	Tribeca Racing	Yamaha YZF R6	<b>1'34.672</b>	0.794	0.049	20	169,026	<b>264,1</b>
7	19 K. WAHR	GER	Gemar Balloons - Team Lorini	Honda CBR600RR	<b>1'34.698</b>	0.820	0.026	9	168,979	<b>261,5</b>
8	11 C. GAMARINO	ITA	Team GoEleven	Kawasaki ZX-6R	<b>1'34.716</b>	0.838	0.018	21	168,947	<b>262,8</b>
9	111 K. SMITH	GBR	CIA Landlord Insurance Honda	Honda CBR600RR	<b>1'34.785</b>	0.907	0.069	22	168,824	<b>265,4</b>
10	63 Z. KHAIRUDDIN	MAS	Orelac Racing VerdNatura	Kawasaki ZX-6R	<b>1'34.795</b>	0.917	0.010	24	168,806	<b>271,4</b>
11	16 J. CLUZEL	FRA	MV Agusta Reparto Corse	MV Agusta F3 675	<b>1'34.999</b>	1.121	0.204	6	168,444	<b>264,7</b>
12	64 F. CARICASULO	ITA	Bardahl Evan Bros. Honda Racing	Honda CBR600RR	<b>1'35.108</b>	1.230	0.109	24	168,251	<b>272,0</b>
13	88 N. TEROL	ESP	Schmidt Racing	MV Agusta F3 675	<b>1'35.136</b>	1.258	0.028	25	168,201	<b>264,1</b>
14	77 K. RYDE	GBR	Ranieri Med - SC Racing	Yamaha YZF R6	<b>1'35.276</b>	1.398	0.140	23	167,954	<b>268,0</b>
15	81 L. STAPLEFORD	GBR	CIA Landlord Insurance Profile Honda	Honda CBR600RR	<b>1'35.287</b>	1.409	0.011	25	167,935	<b>262,8</b>
16	69 O. JEZEK	CZE	Team GoEleven	Kawasaki ZX-6R	<b>1'35.379</b>	1.501	0.092	24	167,773	<b>264,7</b>
17	68 G. SCOTT	AUS	Gemar Balloons - Team Lorini	Honda CBR600RR	<b>1'35.510</b>	1.632	0.131	26	167,543	<b>269,3</b>
18	78 H. OKUBO	JPN	CIA Landlord Insurance Honda	Honda CBR600RR	<b>1'35.578</b>	1.700	0.068	23	167,423	<b>270,0</b>
19	41 A. WAGNER	AUS	GRT Racing Team	MV Agusta F3 675	<b>1'35.710</b>	1.832	0.132	9	167,193	<b>265,4</b>
20	10 N. CALERO	ESP	Orelac Racing VerdNatura	Kawasaki ZX-6R	<b>1'35.879</b>	2.001	0.169	23	166,898	<b>266,7</b>
21	5 M. LEVY	AUS	Landbridge Racing	Yamaha YZF R6	<b>1'35.962</b>	2.084	0.083	28	166,754	<b>264,7</b>
22	44 R. ROLFO	ITA	Team Factory Vamag	MV Agusta F3 675	<b>1'36.130</b>	2.252	0.168	4	166,462	<b>267,3</b>
23	48 A. PHILLIS	AUS	AARK Racing	Honda CBR600RR	<b>1'36.753</b>	2.875	0.623	25	165,390	<b>264,1</b>
24	30 K. BURNS	AUS	Burns Racing	Suzuki GSX-R600	<b>1'36.763</b>	2.885	0.010	16	165,373	<b>260,9</b>
25	35 S. HILL	GBR	CIA Landlord Insurance Honda	Honda CBR600RR	<b>1'37.139</b>	3.261	0.376	23	164,733	<b>259,0</b>
26	83 L. EPIS	AUS	Response RE Racing	Kawasaki ZX-6R	<b>1'38.865</b>	4.987	1.726	29	161,857	<b>260,9</b>

AIR	Humidity:	57%	Temp:	21°C
TRACK	Condition:	Dry	Temp:	37°C

26/02/2016 Start 14:45 End 15:50

The results are provisional until the end of the time limit for protests and appeals and the completion of the technical checks.

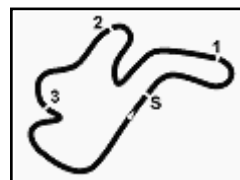
FICR PERUGIA TIMING



Official Tyre Supplier



Official Timekeeper



## Australian Round, 26-27-28 February 2016

### World Supersport - Results Free Practice 2nd Session

#### Session Highlights

14.45.06		Start
14.49.52	Khairuddin	On the Gravel - Re-Joined - Turn 9
14.50.51	Wahr	Crashed - Rider OK - Turn 9
14.57.31		RED FLAG
15.07.22	Terol	On the Gravel - Re-Joined - Turn 10
15.08.38	Cluzel	Crashed - Rider OK - Turn 11
15.11.16		Medical Center
15.12.09	Stapleford	On the Gravel - Re-Joined - Turn 6
15.14.10	Wagner	Crashed - Rider OK - Turn 10
15.46.46	Jacobsen	Crashed - Rider OK - Turn 6
15.47.29	Stapleford	On the Gravel - Re-Joined - Turn 4
15.50.50		End Of Session

#### Fastest Laps Sequence

No.	Rider	Nat	Team	Bike	Local Time	Time	Gap	Avg
64	F. CARICASULO	ITA	Bardahl Evan Bros. Honda Racing	Honda CBR600RR	14:46'52.832	<b>1'50.284</b>		145,098
69	O. JEZEK	CZE	Team GoEleven	Kawasaki ZX-6R	14:46'54.740	<b>1'49.235</b>	-1.049	146,492
77	K. RYDE	GBR	Ranieri Med - SC Racing	Yamaha YZF R6	14:47'00.779	<b>1'44.028</b>	-5.207	153,824
21	R. KRUMMENACHER	SUI	Kawasaki Puccetti Racing	Kawasaki ZX-6R	14:48'29.292	<b>1'35.322</b>	-8.706	167,873
19	K. WAHR	GER	Gemar Balloons - Team Lorini	Honda CBR600RR	14:49'14.340	<b>1'35.031</b>	-0.291	168,387
16	J. CLUZEL	FRA	MV Agusta Reparto Corse	MV Agusta F3 675	14:53'10.021	<b>1'34.999</b>	-0.032	168,444
21	R. KRUMMENACHER	SUI	Kawasaki Puccetti Racing	Kawasaki ZX-6R	14:54'49.862	<b>1'34.911</b>	-0.088	168,600
21	R. KRUMMENACHER	SUI	Kawasaki Puccetti Racing	Kawasaki ZX-6R	14:56'24.438	<b>1'34.576</b>	-0.335	169,197
21	R. KRUMMENACHER	SUI	Kawasaki Puccetti Racing	Kawasaki ZX-6R	15:10'34.690	<b>1'34.263</b>	-0.313	169,759
2	P. JACOBSEN	USA	Honda World Supersport Team	Honda CBR600RR	15:22'09.160	<b>1'34.256</b>	-0.007	169,772
87	L. ZANETTI	ITA	MV Agusta Reparto Corse	MV Agusta F3 675	15:45'24.046	<b>1'34.236</b>	-0.020	169,808
21	R. KRUMMENACHER	SUI	Kawasaki Puccetti Racing	Kawasaki ZX-6R	15:46'17.370	<b>1'33.878</b>	-0.358	170,455

26/02/2016 Start 14:45 End 15:50

The results are provisional until the end of the time limit for protests and appeals and the completion of the technical checks.

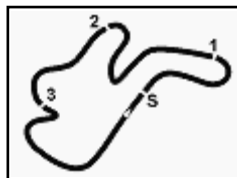
FICR PERUGIA TIMING



Official Tyre Supplier



Official Timekeeper



Phillip Island 4.445 m

## Australian Round, 26-27-28 February 2016

### World Supersport - Best Sector & Speed Free Practice 2nd Session

#### Best Lap

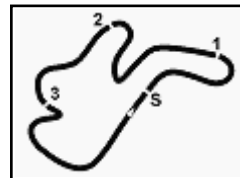
1	21 R. KRUMMENACHER	Kawasaki ZX-6R	1'33.878
2	87 L. ZANETTI	MV Austa F3 675	1'34.236
3	2 P. JACOBSEN	Honda CBR600RR	1'34.256
4	4 G. REA	MV Austa F3 675	1'34.616
5	25 A. BALDOLINI	MV Austa F3 675	1'34.623
6	13 A. WEST	Yamaha YZF R6	1'34.672
7	19 K. WAHR	Honda CBR600RR	1'34.698
8	11 C. GAMARINO	Kawasaki ZX-6R	1'34.716
9	111 K. SMITH	Honda CBR600RR	1'34.785
10	63 Z. KHAIRUDDIN	Kawasaki ZX-6R	1'34.795
11	16 J. CLUZEL	MV Austa F3 675	1'34.999
12	64 F. CARICASULO	Honda CBR600RR	1'35.108
13	88 N. TEROL	MV Austa F3 675	1'35.136
14	77 K. RYDE	Yamaha YZF R6	1'35.276
15	81 L. STAPLEFORD	Honda CBR600RR	1'35.287
16	69 O. JEZEK	Kawasaki ZX-6R	1'35.379
17	68 G. SCOTT	Honda CBR600RR	1'35.510
18	78 H. OKUBO	Honda CBR600RR	1'35.578
19	41 A. WAGNER	MV Austa F3 675	1'35.710
20	10 N. CALERO	Kawasaki ZX-6R	1'35.879
21	5 M. LEVY	Yamaha YZF R6	1'35.962
22	44 R. ROLFO	MV Austa F3 675	1'36.130
23	48 A. PHILLIS	Honda CBR600RR	1'36.753
24	30 K. BURNS	Suzuki GSX-R600	1'36.763
25	35 S. HILL	Honda CBR600RR	1'37.139
26	83 L. EPIS	Kawasaki ZX-6R	1'38.865

#### Top Speeds

1	64 F. CARICASULO	Honda CBR600RR	272.0
2	87 L. ZANETTI	MV Austa F3 675	271.4
3	63 Z. KHAIRUDDIN	Kawasaki ZX-6R	271.4
4	78 H. OKUBO	Honda CBR600RR	270.0
5	2 P. JACOBSEN	Honda CBR600RR	270.0
6	68 G. SCOTT	Honda CBR600RR	269.3
7	21 R. KRUMMENACHER	Kawasaki ZX-6R	268.7
8	77 K. RYDE	Yamaha YZF R6	268.0
9	44 R. ROLFO	MV Austa F3 675	267.3
10	10 N. CALERO	Kawasaki ZX-6R	266.7
11	41 A. WAGNER	MV Austa F3 675	265.4
12	111 K. SMITH	Honda CBR600RR	265.4
13	69 O. JEZEK	Kawasaki ZX-6R	264.7
14	16 J. CLUZEL	MV Austa F3 675	264.7
15	5 M. LEVY	Yamaha YZF R6	264.7
16	88 N. TEROL	MV Austa F3 675	264.1
17	13 A. WEST	Yamaha YZF R6	264.1
18	25 A. BALDOLINI	MV Austa F3 675	264.1
19	48 A. PHILLIS	Honda CBR600RR	264.1
20	4 G. REA	MV Austa F3 675	263.4
21	81 L. STAPLEFORD	Honda CBR600RR	262.8
22	11 C. GAMARINO	Kawasaki ZX-6R	262.8
23	19 K. WAHR	Honda CBR600RR	261.5
24	83 L. EPIS	Kawasaki ZX-6R	260.9
25	30 K. BURNS	Suzuki GSX-R600	260.9
26	35 S. HILL	Honda CBR600RR	259.0
27	1 K. SOFUOGLU	Kawasaki ZX-6R	244.9

Seg. 1		Seg. 2		Seg. 3		Seg. 4		Seg. 5	
1	64 F. CARICASULO 3.585	1	21 R. KRUMMENAC 18.788	1	2 P. JACOBSEN 27.128	1	21 R. KRUMMENAC 17.859	1	21 R. KRUMMENAC 26.211
2	63 Z. KHAIRUDDIN 3.599	2	16 J. CLUZEL 18.927	2	13 A. WEST 27.213	2	16 J. CLUZEL 17.894	2	4 G. REA 26.306
3	87 L. ZANETTI 3.634	3	19 K. WAHR 18.933	3	21 R. KRUMMENAC 27.214	3	2 P. JACOBSEN 17.894	3	13 A. WEST 26.316
4	2 P. JACOBSEN 3.650	4	63 Z. KHAIRUDDIN 18.956	4	19 K. WAHR 27.215	4	25 A. BALDOLINI 17.944	4	63 Z. KHAIRUDDIN 26.354
5	68 G. SCOTT 3.650	5	87 L. ZANETTI 18.974	5	87 L. ZANETTI 27.224	5	87 L. ZANETTI 17.953	5	88 N. TEROL 26.381
6	111 K. SMITH 3.651	6	25 A. BALDOLINI 19.005	6	4 G. REA 27.226	6	4 G. REA 17.991	6	87 L. ZANETTI 26.406
7	78 H. OKUBO 3.654	7	4 G. REA 19.011	7	16 J. CLUZEL 27.227	7	11 C. GAMARINO 17.997	7	19 K. WAHR 26.425
8	21 R. KRUMMENAC 3.655	8	77 K. RYDE 19.016	8	11 C. GAMARINO 27.235	8	111 K. SMITH 18.006	8	64 F. CARICASULO 26.489
9	44 R. ROLFO 3.673	9	81 L. STAPLEFORD 19.022	9	111 K. SMITH 27.272	9	19 K. WAHR 18.018	9	2 P. JACOBSEN 26.489
10	77 K. RYDE 3.687	10	11 C. GAMARINO 19.037	10	25 A. BALDOLINI 27.274	10	13 A. WEST 18.104	10	11 C. GAMARINO 26.556
11	10 N. CALERO 3.693	11	88 N. TEROL 19.065	11	64 F. CARICASULO 27.285	11	63 Z. KHAIRUDDIN 18.105	11	111 K. SMITH 26.563
12	41 A. WAGNER 3.703	12	2 P. JACOBSEN 19.066	12	77 K. RYDE 27.316	12	77 K. RYDE 18.135	12	68 G. SCOTT 26.619
13	88 N. TEROL 3.706	13	5 M. LEVY 19.086	13	63 Z. KHAIRUDDIN 27.412	13	64 F. CARICASULO 18.143	13	81 L. STAPLEFORD 26.624
14	25 A. BALDOLINI 3.715	14	111 K. SMITH 19.093	14	69 O. JEZEK 27.418	14	69 O. JEZEK 18.158	14	25 A. BALDOLINI 26.633
15	5 M. LEVY 3.716	15	13 A. WEST 19.130	15	81 L. STAPLEFORD 27.458	15	68 G. SCOTT 18.162	15	78 H. OKUBO 26.685
16	13 A. WEST 3.716	16	69 O. JEZEK 19.182	16	78 H. OKUBO 27.537	16	81 L. STAPLEFORD 18.182	16	16 J. CLUZEL 26.694
17	16 J. CLUZEL 3.721	17	78 H. OKUBO 19.197	17	88 N. TEROL 27.551	17	41 A. WAGNER 18.191	17	41 A. WAGNER 26.707
18	48 A. PHILLIS 3.723	18	68 G. SCOTT 19.208	18	68 G. SCOTT 27.561	18	5 M. LEVY 18.199	18	77 K. RYDE 26.753
19	4 G. REA 3.724	19	30 K. BURNS 19.213	19	10 N. CALERO 27.604	19	44 R. ROLFO 18.210	19	5 M. LEVY 26.803
20	69 O. JEZEK 3.727	20	64 F. CARICASULO 19.214	20	41 A. WAGNER 27.679	20	88 N. TEROL 18.220	20	69 O. JEZEK 26.828
21	11 C. GAMARINO 3.740	21	10 N. CALERO 19.227	21	30 K. BURNS 27.861	21	78 H. OKUBO 18.316	21	10 N. CALERO 26.829
22	19 K. WAHR 3.749	22	41 A. WAGNER 19.252	22	44 R. ROLFO 27.867	22	30 K. BURNS 18.353	22	44 R. ROLFO 26.846
23	81 L. STAPLEFORD 3.762	23	44 R. ROLFO 19.341	23	35 S. HILL 27.913	23	10 N. CALERO 18.372	23	48 A. PHILLIS 26.903
24	83 L. EPIS 3.776	24	35 S. HILL 19.382	24	5 M. LEVY 27.950	24	48 A. PHILLIS 18.404	24	30 K. BURNS 27.103
25	30 K. BURNS 3.776	25	48 A. PHILLIS 19.498	25	48 A. PHILLIS 27.963	25	1 K. SOFUOGLU 18.555	25	35 S. HILL 27.158
26	35 S. HILL 3.792	26	83 L. EPIS 19.885	26	83 L. EPIS 28.288	26	35 S. HILL 18.622	26	83 L. EPIS 27.538
27	1 K. SOFUOGLU 3.968	27	1 K. SOFUOGLU 21.295	27	1 K. SOFUOGLU 28.320	27	83 L. EPIS 19.039	27	1 K. SOFUOGLU 28.054





Phillip Island 4.445 m

1 / 1

## Australian Round, 26-27-28 February 2016

### World Supersport - Ideal Times Free Practice 2nd Session

No.	Rider	Nat	Bike	Seg. 1 Diff. 1	Seg. 2 Diff. 2	Seg. 3 Diff. 3	Seg. 4 Diff. 4	Seg. 5 Diff. 5	Ideal Time Best Lap	Pos.	Diff.
1	21 R. KRUMMENACHER	SUI	Kawasaki ZX-6R	3.655 0.071	18.788	27.214 0.080	17.859	26.211	1'33.727 1'33.878	1	0.151
2	87 L. ZANETTI	ITA	MV Agusta F3 675	3.634 0.045	18.974	27.224	17.953	26.406	1'34.191 1'34.236	2	0.045
3	2 P. JACOBSEN	USA	Honda CBR600RR	3.650 0.029	19.066	27.128	17.894	26.489	1'34.227 1'34.256	3	0.029
4	4 G. REA	GBR	MV Agusta F3 675	3.724 0.033	19.011 0.128	27.226	17.991 0.101	26.306 0.096	1'34.258 1'34.616	4	0.358
5	19 K. WAHR	GER	Honda CBR600RR	3.749 0.015	18.933 0.198	27.215 0.068	18.018 0.064	26.425 0.013	1'34.340 1'34.698	7	0.358
6	63 Z. KHAIRUDDIN	MAS	Kawasaki ZX-6R	3.599	18.956	27.412 0.266	18.105 0.103	26.354	1'34.426 1'34.795	10	0.369
7	16 J. CLUZEL	FRA	MV Agusta F3 675	3.721 0.029	18.927 0.131	27.227 0.144	17.894 0.232	26.694	1'34.463 1'34.999	11	0.536
8	13 A. WEST	AUS	Yamaha YZF R6	3.716 0.065	19.130 0.037	27.213	18.104 0.091	26.316	1'34.479 1'34.672	6	0.193
9	11 C. GAMARINO	ITA	Kawasaki ZX-6R	3.740 0.060	19.037 0.091	27.235	17.997	26.556	1'34.565 1'34.716	8	0.151
10	25 A. BALDOLINI	ITA	MV Agusta F3 675	3.715 0.044	19.005 0.008	27.274	17.944	26.633	1'34.571 1'34.623	5	0.052
11	111 K. SMITH	GBR	Honda CBR600RR	3.651 0.098	19.093 0.023	27.272	18.006 0.059	26.563 0.020	1'34.585 1'34.785	9	0.200
12	64 F. CARICASULO	ITA	Honda CBR600RR	3.585 0.046	19.214 0.032	27.285 0.120	18.143 0.055	26.489 0.139	1'34.716 1'35.108	12	0.392
13	77 K. RYDE	GBR	Yamaha YZF R6	3.687 0.060	19.016	27.316	18.135 0.282	26.753 0.027	1'34.907 1'35.276	14	0.369
14	88 N. TEROL	ESP	MV Agusta F3 675	3.706 0.055	19.065 0.030	27.551	18.220 0.041	26.381 0.087	1'34.923 1'35.136	13	0.213
15	81 L. STAPLEFORD	GBR	Honda CBR600RR	3.762 0.049	19.022 0.167	27.458 0.023	18.182	26.624	1'35.048 1'35.287	15	0.239
16	68 G. SCOTT	AUS	Honda CBR600RR	3.650 0.045	19.208 0.019	27.561	18.162 0.210	26.619 0.036	1'35.200 1'35.510	17	0.310
17	69 O. JEZEK	CZE	Kawasaki ZX-6R	3.727	19.182	27.418	18.158 0.066	26.828	1'35.313 1'35.379	16	0.066
18	78 H. OKUBO	JPN	Honda CBR600RR	3.654 0.090	19.197 0.038	27.537 0.021	18.316 0.004	26.685 0.036	1'35.389 1'35.578	18	0.189
19	41 A. WAGNER	AUS	MV Agusta F3 675	3.703 0.045	19.252	27.679 0.070	18.191 0.063	26.707	1'35.532 1'35.710	19	0.178
20	10 N. CALERO	ESP	Kawasaki ZX-6R	3.693 0.031	19.227 0.032	27.604 0.090	18.372	26.829 0.001	1'35.725 1'35.879	20	0.154
21	5 M. LEVY	AUS	Yamaha YZF R6	3.716 0.039	19.086 0.006	27.950	18.199 0.039	26.803 0.124	1'35.754 1'35.962	21	0.208
22	44 R. ROLFO	ITA	MV Agusta F3 675	3.673 0.133	19.341 0.023	27.867 0.018	18.210 0.019	26.846	1'35.937 1'36.130	22	0.193
23	30 K. BURNS	AUS	Suzuki GSX-R600	3.776 0.018	19.213	27.861 0.246	18.353 0.127	27.103 0.066	1'36.306 1'36.763	24	0.457
24	48 A. PHILLIS	AUS	Honda CBR600RR	3.723 0.067	19.498 0.082	27.963 0.003	18.404 0.110	26.903	1'36.491 1'36.753	23	0.262
25	35 S. HILL	GBR	Honda CBR600RR	3.792 0.018	19.382 0.254	27.913	18.622	27.158	1'36.867 1'37.139	25	0.272
26	83 L. EPIS	AUS	Kawasaki ZX-6R	3.776 0.039	19.885	28.288	19.039 0.013	27.538 0.287	1'38.526 1'38.865	26	0.339

**Overall Ideal Time** 3.585 18.788 27.128 17.859 26.211 **1'33.571**



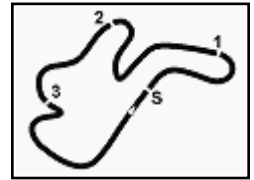




13

WorldSSP

102/01



Phillip Island 4.445 m

Australian Round, 26-27-28 February 2016

World Supersport - Chronological Analysis Free Practice 2nd Session

3 / 4

Table of lap times for driver 15° 81 L. STAPLEFORD (1'35.287)

Main table for driver 15° 81 L. STAPLEFORD showing Lap, Seg. 1-5, Lap Time, km/h, and Local Time

Main table for driver 16° 69 O. JEZEK (1'35.379)

Main table for driver 17° 68 G. SCOTT (1'35.510)

Table of lap times for driver 18° 78 H. OKUBO (1'35.578)

Main table for driver 18° 78 H. OKUBO showing Lap, Seg. 1-5, Lap Time, km/h, and Local Time

Main table for driver 19° 41 A. WAGNER (1'35.710)

Main table for driver 20° 10 N. CALERO (1'35.879)

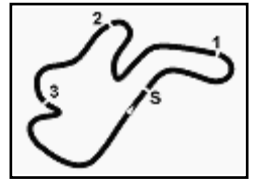
Main table for driver 21° 5 M. LEVY (1'35.962)

P = Pits In/Out - C = Lap-Time Cancelled









Phillip Island 4.445 m

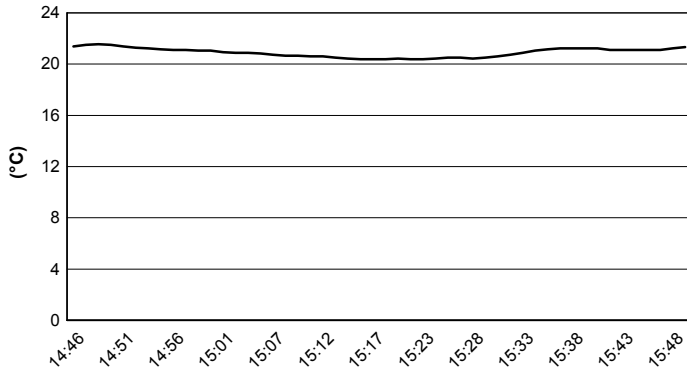
Australian Round, 26-27-28 February 2016

World Supersport - Weather Report Free Practice 2nd Session

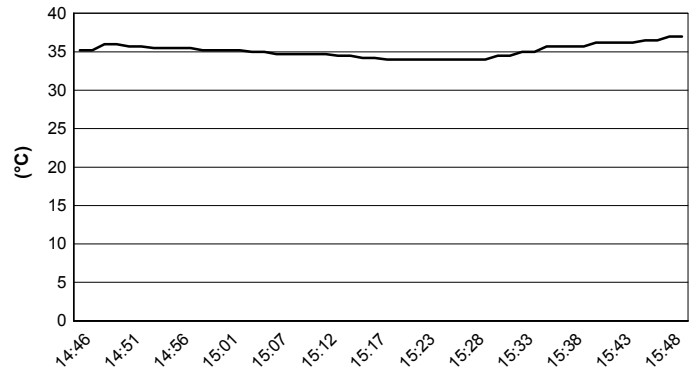
Session started 14:45

Session ended 15:50

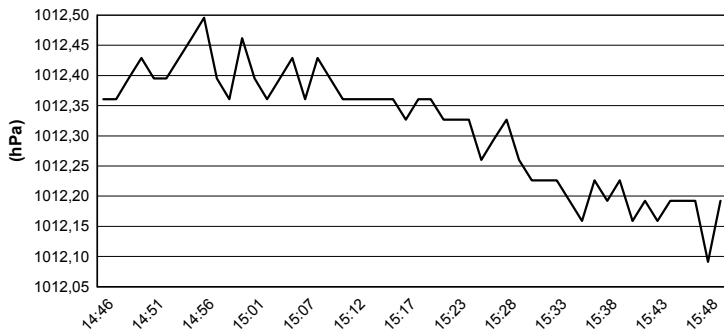
**Air Temperature**



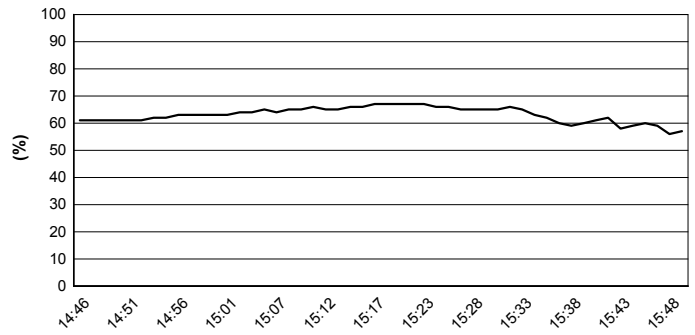
**Track Temperature**



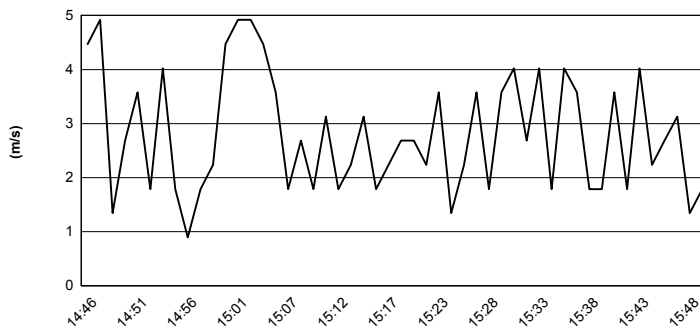
**Air Pressure**



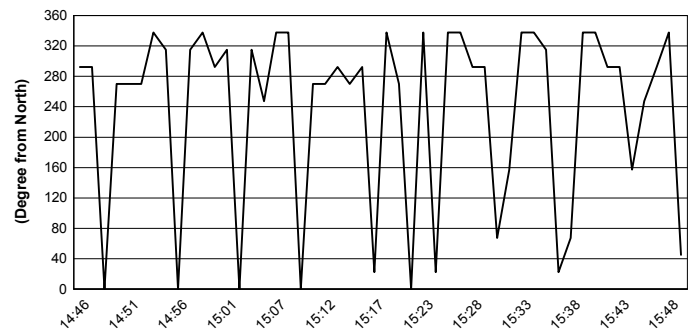
**Humidity**

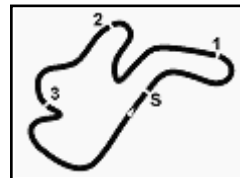


**Wind Speed**



**Wind Direction**





Phillip Island 4.445 m

## Australian Round, 26-27-28 February 2016

### World Supersport - Superpoles Entry List

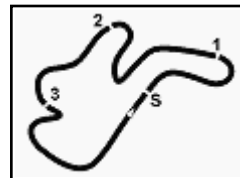
#### Superpole 1

No.	Rider	Nat	Team	Bike	Time
11	<b>4 G. REA</b>	GBR	GRT Racing Team	MV Agusta F3 675	<b>1'34.616</b>
12	<b>13 A. WEST</b>	AUS	Tribeca Racing	Yamaha YZF R6	<b>1'34.672</b>
13	<b>11 C. GAMARINO</b>	ITA	Team GoEleven	Kawasaki ZX-6R	<b>1'34.716</b>
14	<b>63 Z. KHAIRUDDIN</b>	MAS	Orelac Racing VerdNatura	Kawasaki ZX-6R	<b>1'34.795</b>
15	<b>64 F. CARICASULO</b>	ITA	Bardahl Evan Bros. Honda Racing	Honda CBR600RR	<b>1'35.086</b>
16	<b>81 L. STAPLEFORD</b>	GBR	CIA LandlordInsurance Profile Honda	Honda CBR600RR	<b>1'35.133</b>
17	<b>69 O. JEZEK</b>	CZE	Team GoEleven	Kawasaki ZX-6R	<b>1'35.379</b>
18	<b>44 R. ROLFO</b>	ITA	Team Factory Vomag	MV Agusta F3 675	<b>1'35.476</b>
19	<b>68 G. SCOTT</b>	AUS	Gemar Balloons - Team Lorini	Honda CBR600RR	<b>1'35.510</b>
20	<b>78 H. OKUBO</b>	JPN	CIA Landlord Insurance Honda	Honda CBR600RR	<b>1'35.578</b>
21	<b>41 A. WAGNER</b>	AUS	GRT Racing Team	MV Agusta F3 675	<b>1'35.710</b>
22	<b>10 N. CALERO</b>	ESP	Orelac Racing VerdNatura	Kawasaki ZX-6R	<b>1'35.879</b>
23	<b>5 M. LEVY</b>	AUS	Landbridge Racing	Yamaha YZF R6	<b>1'35.962</b>
24	<b>48 A. PHILLIS</b>	AUS	AARK Racing	Honda CBR600RR	<b>1'36.315</b>
25	<b>30 K. BURNS</b>	AUS	Burns Racing	Suzuki GSX-R600	<b>1'36.416</b>
26	<b>35 S. HILL</b>	GBR	CIA Landlord Insurance Honda	Honda CBR600RR	<b>1'37.139</b>
27	<b>83 L. EPIS</b>	AUS	Response RE Racing	Kawasaki ZX-6R	<b>1'38.865</b>

#### Superpole 2

No.	Rider	Nat	Team	Bike	Time
1	<b>1 K. SOFUOGLU</b>	TUR	Kawasaki Puccetti Racing	Kawasaki ZX-6R	<b>1'33.664</b>
2	<b>16 J. CLUZEL</b>	FRA	MV Agusta Reparto Corse	MV Agusta F3 675	<b>1'33.877</b>
3	<b>21 R. KRUMMENACHER</b>	SUI	Kawasaki Puccetti Racing	Kawasaki ZX-6R	<b>1'33.878</b>
4	<b>87 L. ZANETTI</b>	ITA	MV Agusta Reparto Corse	MV Agusta F3 675	<b>1'34.032</b>
5	<b>77 K. RYDE</b>	GBR	Ranieri Med - SC Racing	Yamaha YZF R6	<b>1'34.202</b>
6	<b>2 P. JACOBSEN</b>	USA	Honda World Supersport Team	Honda CBR600RR	<b>1'34.256</b>
7	<b>25 A. BALDOLINI</b>	ITA	Race Department ATK#25	MV Agusta F3 675	<b>1'34.398</b>
8	<b>19 K. WAHR</b>	GER	Gemar Balloons - Team Lorini	Honda CBR600RR	<b>1'34.442</b>
9	<b>111 K. SMITH</b>	GBR	CIA Landlord Insurance Honda	Honda CBR600RR	<b>1'34.540</b>
10	<b>88 N. TEROL</b>	ESP	Schmidt Racing	MV Agusta F3 675	<b>1'34.600</b>
*					
*					

\* These positions are assigned to the 1st and 2nd rider classified in Superpole 1



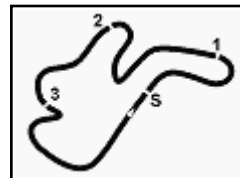
## Australian Round, 26-27-28 February 2016

### World Supersport - Best Laps & Speeds

102/01

1 / 2

No.	Rider		Best Lap	FP1		FP2	
	Nat	Bike		laps	speed	laps	speed
1	1	<b>SOFUOGLU Kenan</b>	1'33.664	22	275	22	275
		TUR Kawasaki ZX-6R					
2	16	<b>CLUZEL Jules</b>	1'33.877	24	274	18	274
		FRA MV Agusta F3 675				6	265
3	21	<b>KRUMMENACHER Randy</b>	1'33.878	50	272	24	272
		SUI Kawasaki ZX-6R				26	269
4	87	<b>ZANETTI Lorenzo</b>	1'34.032	36	274	17	274
		ITA MV Agusta F3 675				19	271
5	77	<b>RYDE Kyle</b>	1'34.202	41	273	18	273
		GBR Yamaha YZF R6				23	268
6	2	<b>JACOBSEN Patrick</b>	1'34.256	47	273	23	273
		USA Honda CBR600RR				24	270
7	25	<b>BALDOLINI Alex</b>	1'34.398	39	274	23	274
		ITA MV Agusta F3 675				16	264
8	19	<b>WAHR Kevin</b>	1'34.442	30	272	21	272
		GER Honda CBR600RR				9	262
9	111	<b>SMITH Kyle</b>	1'34.540	45	268	23	268
		GBR Honda CBR600RR				22	265
10	88	<b>TEROL Nicolas</b>	1'34.600	46	266	21	266
		ESP MV Agusta F3 675				25	264
11	4	<b>REA Gino</b>	1'34.616	44	266	20	266
		GBR MV Agusta F3 675				24	263
12	13	<b>WEST Anthony</b>	1'34.672	39	264	19	262
		AUS Yamaha YZF R6				20	264
13	11	<b>GAMARINO Christian</b>	1'34.716	43	270	22	270
		ITA Kawasaki ZX-6R				21	263
14	63	<b>KHAIRUDDIN Zulfahmi</b>	1'34.795	47	277	23	277
		MAS Kawasaki ZX-6R				24	271
15	64	<b>CARICASULO Federico</b>	1'35.086	47	280	23	280
		ITA Honda CBR600RR				24	272
16	81	<b>STAPLEFORD Luke</b>	1'35.133	47	265	22	265
		GBR Honda CBR600RR				25	263
17	69	<b>JEZEK Ondrej</b>	1'35.379	41	265	17	265
		CZE Kawasaki ZX-6R				24	265
18	44	<b>ROLFO Roberto</b>	1'35.476	28	269	24	269
		ITA MV Agusta F3 675				4	267
19	68	<b>SCOTT Glenn</b>	1'35.510	50	271	24	271
		AUS Honda CBR600RR				26	269
20	78	<b>OKUBO Hikari</b>	1'35.578	46	270	23	269
		JPN Honda CBR600RR				23	270
21	41	<b>WAGNER Aiden</b>	1'35.710	23	265	14	262
		AUS MV Agusta F3 675				9	265



Phillip Island 4.445 m

## Australian Round, 26-27-28 February 2016

### World Supersport - Best Laps & Speeds

No.	Rider		Best Lap	FP1		FP2	
	Nat	Bike		laps	speed	laps	speed
22	10	<b>CALERO Nacho</b>	<b>1'35.879</b>	1'36.885	1'35.879		
	ESP	Kawasaki ZX-6R	47 272	24 <b>272</b>	23	267	
23	5	<b>LEVY Mitch</b>	<b>1'35.962</b>	1'35.994	1'35.962		
	AUS	Yamaha YZF R6	48 268	20 <b>268</b>	28	265	
24	48	<b>PHILLIS Alex</b>	<b>1'36.315</b>	1'36.315	1'36.753		
	AUS	Honda CBR600RR	50 268	25 <b>268</b>	25	264	
25	30	<b>BURNS Kane</b>	<b>1'36.416</b>	1'36.416	1'36.763		
	AUS	Suzuki GSX-R600	32 265	16 <b>265</b>	16	261	
26	35	<b>HILL Stefan</b>	<b>1'37.139</b>	1'37.531	1'37.139		
	GBR	Honda CBR600RR	46 263	23 <b>263</b>	23	259	
27	83	<b>EPIS Lachlan</b>	<b>1'38.865</b>	1'38.967	1'38.865		
	AUS	Kawasaki ZX-6R	54 264	25 <b>264</b>	29	261	

