

Phillip Island 4.445 m

1 / 2

Australian Round, 26-27-28 February 2016

World Supersport - Results Superpole 1

No.	Rider	Nat	Team	Bike	Time	Gap	Rel.	Laps	Speed	
									Avg	Max
1*	11 C. GAMARINO	ITA	Team GoEleven	Kawasaki ZX-6R	1'34.042			8	170,158	264,7
2*	64 F. CARICASULO	ITA	Bardahl Evan Bros. Honda Racing	Honda CBR600RR	1'34.163	0.121	0.121	8	169,939	273,4
3	13 A. WEST	AUS	Tribeca Racing	Yamaha YZF R6	1'34.262	0.220	0.099	9	169,761	263,4
4	69 O. JEZEK	CZE	Team GoEleven	Kawasaki ZX-6R	1'34.295	0.253	0.033	8	169,701	265,4
5	81 L. STAPLEFORD	GBR	CIA LandlordInsurance Profile Honda	Honda CBR600RR	1'34.322	0.280	0.027	7	169,653	268,7
6	41 A. WAGNER	AUS	GRT Racing Team	MV Agusta F3 675	1'34.536	0.494	0.214	9	169,269	264,7
7	63 Z. KHAIRUDDIN	MAS	Orelac Racing VerdNatura	Kawasaki ZX-6R	1'34.615	0.573	0.079	7	169,128	266,0
8	4 G. REA	GBR	GRT Racing Team	MV Agusta F3 675	1'34.623	0.581	0.008	8	169,113	267,3
9	78 H. OKUBO	JPN	CIA Landlord Insurance Honda	Honda CBR600RR	1'34.652	0.610	0.029	6	169,061	269,3
10	68 G. SCOTT	AUS	Gemar Balloons - Team Lorini	Honda CBR600RR	1'35.175	1.133	0.523	10	168,132	269,3
11	10 N. CALERO	ESP	Orelac Racing VerdNatura	Kawasaki ZX-6R	1'35.249	1.207	0.074	8	168,002	265,4
12	44 R. ROLFO	ITA	Team Factory Vamag	MV Agusta F3 675	1'35.446	1.404	0.197	9	167,655	259,0
13	48 A. PHILLIS	AUS	AARK Racing	Honda CBR600RR	1'35.882	1.840	0.436	9	166,893	270,7
14	5 M. LEVY	AUS	Landbridge Racing	Yamaha YZF R6	1'36.072	2.030	0.190	4	166,563	272,0
15	30 K. BURNS	AUS	Burns Racing	Suzuki GSX-R600	1'36.115	2.073	0.043	4	166,488	256,5
16	35 S. HILL	GBR	CIA Landlord Insurance Honda	Honda CBR600RR	1'37.057	3.015	0.942	9	164,872	260,9
17	83 L. EPIS	AUS	Response RE Racing	Kawasaki ZX-6R	1'38.049	4.007	0.992	8	163,204	259,0

* Qualified to Superpole 2

AIR	Humidity:	69%	Temp:	21°C
TRACK	Condition:	Dry	Temp:	31°C

27/02/2016 Start 13:30 End 13:46

The results are provisional until the end of the time limit for protests and appeals and the completion of the technical checks.

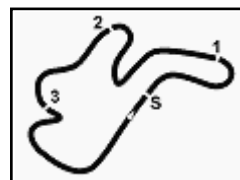
FICR PERUGIA TIMING



Official Tyre Supplier



Official Timekeeper



Australian Round, 26-27-28 February 2016

World Supersport - Results Superpole 1

Session Highlights

13.30.10		Start
13.34.12	Okubo	On the Gravel - Re-Joined - Turn 1
13.38.41	Levy	Technical Problem - Turn 10
13.46.59		End Of Session

Fastest Laps Sequence

No.	Rider	Nat	Team	Bike	Local Time	Time	Gap	Avg
30	K. BURNS	AUS	Burns Racing	Suzuki GSX-R600	13:31'50.000	1'45.286		151,986
30	K. BURNS	AUS	Burns Racing	Suzuki GSX-R600	13:33'26.115	1'36.115	-9.171	166,488
13	A. WEST	AUS	Tribeca Racing	Yamaha YZF R6	13:33'28.043	1'34.526	-1.589	169,287
64	F. CARICASULO	ITA	Bardahl Evan Bros. Honda Racing	Honda CBR600RR	13:35'03.459	1'34.318	-0.208	169,660
64	F. CARICASULO	ITA	Bardahl Evan Bros. Honda Racing	Honda CBR600RR	13:41'36.216	1'34.163	-0.155	169,939
11	C. GAMARINO	ITA	Team GoEleven	Kawasaki ZX-6R	13:42'43.691	1'34.042	-0.121	170,158

27/02/2016 Start 13:30 End 13:46

The results are provisional until the end of the time limit for protests and appeals and the completion of the technical checks.

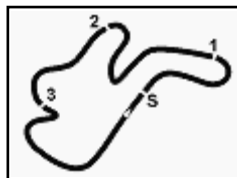
FICR PERUGIA TIMING



Official Tyre Supplier



Official Timekeeper



Phillip Island 4.445 m

Australian Round, 26-27-28 February 2016

World Supersport - Best Sector & Speed Superpole 1

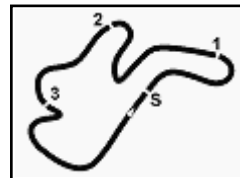
Best Lap

1	11 C. GAMARINO	Kawasaki ZX-6R	1'34.042
2	64 F. CARICASULO	Honda CBR600RR	1'34.163
3	13 A. WEST	Yamaha YZF R6	1'34.262
4	69 O. JEZEK	Kawasaki ZX-6R	1'34.295
5	81 L. STAPLEFORD	Honda CBR600RR	1'34.322
6	41 A. WAGNER	MV Austa F3 675	1'34.536
7	63 Z. KHAIRUDDIN	Kawasaki ZX-6R	1'34.615
8	4 G. REA	MV Austa F3 675	1'34.623
9	78 H. OKUBO	Honda CBR600RR	1'34.652
10	68 G. SCOTT	Honda CBR600RR	1'35.175
11	10 N. CALERO	Kawasaki ZX-6R	1'35.249
12	44 R. ROLFO	MV Austa F3 675	1'35.446
13	48 A. PHILLIS	Honda CBR600RR	1'35.882
14	5 M. LEVY	Yamaha YZF R6	1'36.072
15	30 K. BURNS	Suzuki GSX-R600	1'36.115
16	35 S. HILL	Honda CBR600RR	1'37.057
17	83 L. EPIS	Kawasaki ZX-6R	1'38.049

Top Speeds

1	64 F. CARICASULO	Honda CBR600RR	273.4
2	5 M. LEVY	Yamaha YZF R6	272.0
3	48 A. PHILLIS	Honda CBR600RR	270.7
4	78 H. OKUBO	Honda CBR600RR	269.3
5	68 G. SCOTT	Honda CBR600RR	269.3
6	81 L. STAPLEFORD	Honda CBR600RR	268.7
7	4 G. REA	MV Austa F3 675	267.3
8	63 Z. KHAIRUDDIN	Kawasaki ZX-6R	266.0
9	10 N. CALERO	Kawasaki ZX-6R	265.4
10	69 O. JEZEK	Kawasaki ZX-6R	265.4
11	11 C. GAMARINO	Kawasaki ZX-6R	264.7
12	41 A. WAGNER	MV Austa F3 675	264.7
13	13 A. WEST	Yamaha YZF R6	263.4
14	35 S. HILL	Honda CBR600RR	260.9
15	44 R. ROLFO	MV Austa F3 675	259.0
16	83 L. EPIS	Kawasaki ZX-6R	259.0
17	30 K. BURNS	Suzuki GSX-R600	256.5

Seg. 1		Seg. 2		Seg. 3		Seg. 4		Seg. 5						
1	78 H. OKUBO	3.570	1	11 C. GAMARINO	18.868	1	11 C. GAMARINO	27.151	1	69 O. JEZEK	17.739	1	78 H. OKUBO	26.170
2	64 F. CARICASULO	3.612	2	81 L. STAPLEFORD	18.885	2	13 A. WEST	27.183	2	11 C. GAMARINO	17.768	2	64 F. CARICASULO	26.181
3	5 M. LEVY	3.616	3	13 A. WEST	18.915	3	69 O. JEZEK	27.186	3	13 A. WEST	17.875	3	41 A. WAGNER	26.328
4	48 A. PHILLIS	3.625	4	69 O. JEZEK	18.939	4	81 L. STAPLEFORD	27.213	4	81 L. STAPLEFORD	17.882	4	11 C. GAMARINO	26.355
5	81 L. STAPLEFORD	3.632	5	41 A. WAGNER	18.969	5	64 F. CARICASULO	27.229	5	41 A. WAGNER	17.889	5	13 A. WEST	26.398
6	4 G. REA	3.634	6	63 Z. KHAIRUDDIN	18.995	6	63 Z. KHAIRUDDIN	27.318	6	64 F. CARICASULO	17.928	6	69 O. JEZEK	26.412
7	68 G. SCOTT	3.644	7	4 G. REA	19.005	7	41 A. WAGNER	27.325	7	4 G. REA	17.936	7	4 G. REA	26.418
8	11 C. GAMARINO	3.687	8	64 F. CARICASULO	19.019	8	10 N. CALERO	27.392	8	63 Z. KHAIRUDDIN	17.946	8	68 G. SCOTT	26.537
9	63 Z. KHAIRUDDIN	3.689	9	5 M. LEVY	19.029	9	4 G. REA	27.470	9	44 R. ROLFO	18.007	9	10 N. CALERO	26.542
10	13 A. WEST	3.700	10	44 R. ROLFO	19.089	10	68 G. SCOTT	27.480	10	5 M. LEVY	18.011	10	81 L. STAPLEFORD	26.556
11	10 N. CALERO	3.702	11	78 H. OKUBO	19.113	11	78 H. OKUBO	27.640	11	68 G. SCOTT	18.032	11	63 Z. KHAIRUDDIN	26.588
12	69 O. JEZEK	3.707	12	68 G. SCOTT	19.159	12	44 R. ROLFO	27.680	12	78 H. OKUBO	18.039	12	48 A. PHILLIS	26.621
13	41 A. WAGNER	3.708	13	10 N. CALERO	19.182	13	48 A. PHILLIS	27.799	13	10 N. CALERO	18.051	13	44 R. ROLFO	26.643
14	35 S. HILL	3.753	14	30 K. BURNS	19.218	14	5 M. LEVY	27.877	14	48 A. PHILLIS	18.213	14	5 M. LEVY	26.782
15	83 L. EPIS	3.760	15	48 A. PHILLIS	19.402	15	30 K. BURNS	27.976	15	30 K. BURNS	18.216	15	30 K. BURNS	26.841
16	44 R. ROLFO	3.821	16	35 S. HILL	19.427	16	35 S. HILL	28.026	16	35 S. HILL	18.354	16	35 S. HILL	27.226
17	30 K. BURNS	3.848	17	83 L. EPIS	19.694	17	83 L. EPIS	28.172	17	83 L. EPIS	18.669	17	83 L. EPIS	27.313



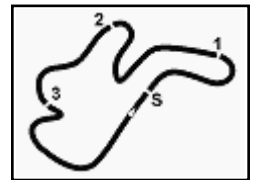
Phillip Island 4.445 m

Australian Round, 26-27-28 February 2016

World Supersport - Ideal Times Superpole 1

No.	Rider	Nat	Bike	Seg. 1 Diff. 1	Seg. 2 Diff. 2	Seg. 3 Diff. 3	Seg. 4 Diff. 4	Seg. 5 Diff. 5	Ideal Time Best Lap	Pos.	Diff.
1	11 C. GAMARINO	ITA	Kawasaki ZX-6R	3.687 0.105	18.868 0.081	27.151	17.768 0.008	26.355 0.019	1'33.829 1'34.042	1	0.213
2	64 F. CARICASULO	ITA	Honda CBR600RR	3.612 0.041	19.019 0.153	27.229	17.928	26.181	1'33.969 1'34.163	2	0.194
3	69 O. JEZEK	CZE	Kawasaki ZX-6R	3.707 0.016	18.939	27.186	17.739 0.146	26.412 0.150	1'33.983 1'34.295	4	0.312
4	13 A. WEST	AUS	Yamaha YZF R6	3.700 0.045	18.915	27.183	17.875 0.119	26.398 0.027	1'34.071 1'34.262	3	0.191
5	81 L. STAPLEFORD	GBR	Honda CBR600RR	3.632 0.154	18.885	27.213	17.882	26.556	1'34.168 1'34.322	5	0.154
6	41 A. WAGNER	AUS	MV Agusta F3 675	3.708	18.969 0.187	27.325 0.130	17.889	26.328	1'34.219 1'34.536	6	0.317
7	4 G. REA	GBR	MV Agusta F3 675	3.634 0.127	19.005	27.470 0.020	17.936	26.418 0.013	1'34.463 1'34.623	8	0.160
8	78 H. OKUBO	JPN	Honda CBR600RR	3.570 0.087	19.113 0.033	27.640	18.039	26.170	1'34.532 1'34.652	9	0.120
9	63 Z. KHAIRUDDIN	MAS	Kawasaki ZX-6R	3.689	18.995 0.079	27.318	17.946	26.588	1'34.536 1'34.615	7	0.079
10	68 G. SCOTT	AUS	Honda CBR600RR	3.644 0.087	19.159 0.071	27.480	18.032	26.537 0.165	1'34.852 1'35.175	10	0.323
11	10 N. CALERO	ESP	Kawasaki ZX-6R	3.702	19.182 0.323	27.392	18.051	26.542 0.057	1'34.869 1'35.249	11	0.380
12	44 R. ROLFO	ITA	MV Agusta F3 675	3.821 0.015	19.089 0.098	27.680	18.007 0.029	26.643 0.064	1'35.240 1'35.446	12	0.206
13	5 M. LEVY	AUS	Yamaha YZF R6	3.616 0.114	19.029 0.054	27.877 0.206	18.011 0.159	26.782 0.224	1'35.315 1'36.072	14	0.757
14	48 A. PHILLIS	AUS	Honda CBR600RR	3.625 0.096	19.402 0.126	27.799	18.213	26.621	1'35.660 1'35.882	13	0.222
15	30 K. BURNS	AUS	Suzuki GSX-R600	3.848 0.016	19.218	27.976	18.216	26.841	1'36.099 1'36.115	15	0.016
16	35 S. HILL	GBR	Honda CBR600RR	3.753 0.075	19.427 0.108	28.026	18.354 0.048	27.226 0.040	1'36.786 1'37.057	16	0.271
17	83 L. EPIS	AUS	Kawasaki ZX-6R	3.760 0.094	19.694 0.319	28.172	18.669	27.313 0.028	1'37.608 1'38.049	17	0.441
Overall Ideal Time				3.570	18.868	27.151	17.739	26.170	1'33.498		





Australian Round, 26-27-28 February 2016

World Supersport - Chronological Analysis Superpole 1

Phillip Island 4.445 m

1 / 2

1° 11 C. GAMARINO (1'34.042)								
Lap	Seg. 1	Seg. 2	Seg. 3	Seg. 4	Seg. 5	Lap Time	km/h	Local Time
1	9.105	23.051	28.892	19.173	34.542	1'54.763 P	118.9	13:30'07.022
2	3.782	19.081	28.121	17.854	31.114	1'39.952	260.2	13:32'11.737
3	3.760	19.149	27.340	17.901	26.467	1'34.617	262.1	13:35'16.354
4	3.687	19.149	30.930	18.680	2'55.688	4'08.134 P	264.7	13:39'24.488
5	7.860	23.666	28.410	18.469	26.756	1'45.161 P	154.5	13:41'09.649
6	3.792	18.949	27.151	17.776	26.374	1'34.042	259.0	13:42'43.691
7	3.763	18.868	28.050	17.926	26.728	1'35.335	261.5	13:44'19.026
8	3.776	18.885	27.418	17.768	26.355	1'34.202	259.6	13:45'53.228

2° 64 F. CARICASULO (1'34.163)								
Lap	Seg. 1	Seg. 2	Seg. 3	Seg. 4	Seg. 5	Lap Time	km/h	Local Time
1			29.051	19.620	29.419	1'49.477 P		13:30'04.596
2	3.612	19.033	27.362	18.193	26.868	1'35.068	273.4	13:31'54.073
3	3.664	19.082	27.367	18.018	26.187	1'34.318	270.0	13:33'29.141
4	3.650	21.551	28.557	18.221	1'56.987	3'08.966 P	271.4	13:38'12.425
5			31.408	18.855	26.448	1'49.628 P		13:40'02.053
6	3.653	19.172	27.229	17.928	26.181	1'34.163	270.0	13:41'36.216
7	3.647	19.225	41.618	18.097	28.152	1'50.739	270.7	13:43'26.955
8	3.661	19.019	27.768	18.371	29.286	1'38.105	269.3	13:45'05.060

3° 13 A. WEST (1'34.262)								
Lap	Seg. 1	Seg. 2	Seg. 3	Seg. 4	Seg. 5	Lap Time	km/h	Local Time
1			28.246	19.055	27.935	1'47.354 P		13:30'06.163
2	3.700	19.095	27.201	18.132	26.398	1'34.526	263.4	13:31'53.517
3	3.767	19.173	27.297	17.969	26.486	1'34.692	260.2	13:33'28.043
4	3.804	21.993	28.986	18.383	27.592	1'40.758	257.8	13:35'02.735
5	3.751	19.031	31.349	19.667	1'19.979	2'33.777 P	260.2	13:36'43.493
6			29.139	19.139	29.832	1'47.489 P		13:39'17.270
7	3.745	18.915	27.183	17.994	26.425	1'34.262	262.1	13:41'04.759
8	3.775	18.977	27.207	17.875	26.474	1'34.308	259.6	13:42'39.021
9	3.769	19.014	27.256	17.971	26.402	1'34.412	259.6	13:44'13.329

4° 69 O. JEZEK (1'34.295)								
Lap	Seg. 1	Seg. 2	Seg. 3	Seg. 4	Seg. 5	Lap Time	km/h	Local Time
1	9.337	24.185	29.419	19.513	33.885	1'56.339 P	123.4	13:30'06.896
2	3.742	19.069	27.405	17.739	26.600	1'34.555	263.4	13:32'03.235
3	3.707	19.324	27.275	17.899	26.412	1'34.617	265.4	13:33'37.790
4	3.761	20.003	29.891	19.552	2'54.090	4'07.297 P	260.2	13:35'12.407
5	7.090	22.032	28.409	18.465	29.606	1'45.602 P	158.8	13:39'19.704
6	3.723	18.980	27.371	17.857	26.689	1'34.620	264.1	13:41'05.306
7	3.723	18.939	27.186	17.885	26.562	1'34.295	264.1	13:42'39.926
8	3.748	18.969	27.222	17.893	26.533	1'34.365	260.9	13:44'14.221

5° 81 L. STAPLEFORD (1'34.322)								
Lap	Seg. 1	Seg. 2	Seg. 3	Seg. 4	Seg. 5	Lap Time	km/h	Local Time
1			28.987	19.109	28.303	1'48.228 P		13:30'06.419
2	3.731	19.135	27.494	18.116	26.589	1'35.065	264.1	13:31'54.647
3	3.632	19.245	27.377	18.049	26.576	1'34.879	268.7	13:33'29.712
4	3.741	19.585	28.683	19.986	26.990	1'38.985	264.1	13:35'04.591
5	3.762	19.285	30.075	21.577	27.177	1'41.876	264.1	13:36'43.576
6	3.809	18.977	27.296	17.967	26.858	1'34.907	257.8	13:38'25.452
7	3.786	18.885	27.213	17.882	26.556	1'34.322	259.0	13:40'00.359
8								13:42'39.221

6° 41 A. WAGNER (1'34.536)								
Lap	Seg. 1	Seg. 2	Seg. 3	Seg. 4	Seg. 5	Lap Time	km/h	Local Time
1	8.550	22.292	29.370	20.630	27.642	1'48.484 P		13:30'05.007
2	3.802	19.350	27.720	18.101	26.925	1'35.898	256.5	13:31'53.491
3	3.708	19.156	27.455	17.889	26.328	1'34.536	264.1	13:33'29.389
4	3.733	20.480	31.172	18.361	26.870	1'40.616	262.8	13:35'03.925
5	3.710	18.969	30.468	18.464	1'59.266	3'10.877 P	264.7	13:36'44.541
6	7.047	23.194	28.013	18.098	26.731	1'43.083 P		13:39'55.418
7	3.781	19.177	27.467	18.010	26.653	1'35.088	259.6	13:41'38.501
8	3.789	19.221	27.325	17.973	26.642	1'34.950	257.8	13:43'13.589
9	3.792	19.154	27.491	18.150	26.794	1'35.381	257.8	13:44'48.539

7° 63 Z. KHAIRUDDIN (1'34.615)								
Lap	Seg. 1	Seg. 2	Seg. 3	Seg. 4	Seg. 5	Lap Time	km/h	Local Time
1	8.532	23.478	28.559	18.473	27.224	1'46.266 P	152.8	13:30'36.721
2	3.789	19.240	27.825	18.218	26.925	1'35.997	260.2	13:32'22.987
3	3.785	20.034	29.349	18.587	4'18.054	5'29.809 P	260.2	13:33'58.984
4	7.944	24.108	37.522	19.255	28.731	1'57.560 P	148.6	13:39'28.793
5	3.713	18.995	27.453	18.024	26.721	1'34.906	265.4	13:41'26.353

6	3.708	19.689	39.980	18.789	26.896	1'49.062	265.4	13:44'50.321
7	3.689	19.074	27.318	17.946	26.588	1'34.615	266.0	13:46'24.936

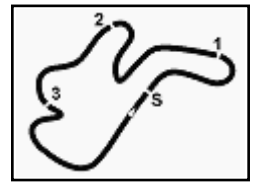
8° 4 G. REA (1'34.623)								
Lap	Seg. 1	Seg. 2	Seg. 3	Seg. 4	Seg. 5	Lap Time	km/h	Local Time
1	7.758	22.221	29.810	20.410	29.439	1'49.638 P		13:30'05.307
2	3.688	19.113	27.531	18.069	26.418	1'34.819	266.0	13:31'54.945
3	3.634	19.319	27.470	17.945	26.446	1'34.814	264.1	13:33'29.764
4	3.696	19.479	30.408	18.527	27.178	1'39.288	266.7	13:35'04.578
5	3.641	19.361	29.843	18.776	2'09.328	3'20.949 P	267.3	13:36'43.866
6	7.350	21.738	27.869	18.172	26.570	1'41.699 P		13:40'04.815
7	3.761	19.005	27.490	17.936	26.431	1'34.623	260.2	13:41'21.137
8	3.771	19.109	31.885	18.237	32.774	1'45.776	259.0	13:43'21.371

9° 78 H. OKUBO (1'34.652)								
Lap	Seg. 1	Seg. 2	Seg. 3	Seg. 4	Seg. 5	Lap Time	km/h	Local Time
1				29.089	19.248	28.337	1'48.761 P	13:30'06.409
2	3.657	19.146	27.640	18.039	26.170	1'34.652	269.3	13:31'55.170
3	3.570	49.442	31.336	18.982	3'47.490	5'30.820 P	266.7	13:33'29.822
4	3.641	19.225	32.645	30.648	49.157	2'39.120 P		13:35'08.368
5	3.764	19.225	29.496	19.453	30.122	1'42.060	260.2	13:36'43.743
6	3.725	19.113	33.047	18.597	32.007	1'46.489	262.8	13:38'19.514

10° 68 G. SCOTT (1'35.175)								
Lap	Seg. 1	Seg. 2	Seg. 3	Seg. 4	Seg. 5	Lap Time	km/h	Local Time
1				28.956	19.237	27.427	1'48.182 P	13:30'08.599
2	3.697	19.280	28.119	18.365	26.687	1'36.148	266.0	13:31'56.781
3	3.656	19.284	27.858	18.081	26.560	1'35.439	269.3	13:33'32.929
4	3.675	19.179	27.690	18.112	26.719	1'35.375	268.7	13:35'08.368
5	3.644	19.373	28.027	18.073	26.654	1'35.771	268.7	13:36'43.743
6	3.746	19.281	27.623	18.064	26.537	1'35.251	262.1	13:38'27.346
7	3.723	19.206	27.707	18.039	26.709	1'35.384	262.8	13:39'54.765
8	3.731	19.230	27.480	18.032	26.702	1'35.175	263.4	13:41'30.121
9	3.723	19.179	27.609	18.038	26.779	1'35.328	264.1	13:43'05.324
10	3.730	19.159	27.580	18.085	26.643	1'35.197	262.1	13:44'10.652

11° 10 N. CALERO (1'35.249)								
Lap	Seg. 1	Seg. 2	Seg. 3	Seg. 4	Seg. 5	Lap Time	km/h	Local Time
1	7.543	23.638	28.625	19.476	29.562	1'48.844 P	133.8	13:30'10.533
2	3.722	19.564	29.435	18.297	26.975	1'37.993	264.7	13:31'59.377
3	3.764	19.982	27.673	18.241	26.771	1'36.431	261.5	13:33'37.370
4	3.753	19.570	33.260	19.006	2'18.341	3'33.930 P	262.1	13:35'10.831
5	9.952	26.443	38.247	25.706	35.744	2'16.092 P	100.9	13:36'43.731
6	3.826	19.666	27.641	18.074	26.542	1'35.749	257.1	13:38'47.731
7	3.702	19.505	27.392	18.051	26.599	1'35.249	265.4	13:41'03.823
8	3.733	19.182	27.541	18.192	26.622	1'35.270	262.8	13:42'39.572

12° 44 R. ROLFO (1'35.446)								
Lap	Seg. 1	Seg. 2	Seg. 3	Seg. 4	Seg. 5	Lap Time	km/h	Local Time
1				29.686	24.332	28.757	1'53.763 P	13:30'05.580
2	3.822	22.971	28.821	18.457	26.849	1'40.920	259.0	13:31'59.343
3	3.821	19.312	28.022	18.149	26.670	1'35.974	258.4	13:33'40.263
4	3.832	19.257	27					



Phillip Island 4.445 m

Australian Round, 26-27-28 February 2016

World Supersport - Chronological Analysis Superpole 1

3	3.734	19.174	38.110	18.011	26.954	1'45.983	264.7	13:35'18.014
4	3.730	19.083	28.083	18.170	27.006	1'36.072	264.7	13:36'54.086

15° 30 K. BURNS (1'36.115)

Lap	Seg. 1	Seg. 2	Seg. 3	Seg. 4	Seg. 5	Lap Time	km/h	Local Time
1			28.660	18.812	27.003	1'45.286 P		13:30'04.714
2	3.864	19.218	27.976	18.216	26.841	1'36.115	255.3	13:31'50.000
3	3.848	19.311	35.977	18.575	2'58.662	4'16.373 P	256.5	13:37'42.488
4		29.550	18.800	27.509		1'46.092 P		13:39'28.580

16° 35 S. HILL (1'37.057)

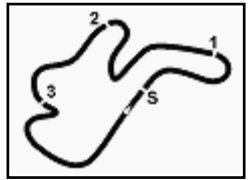
Lap	Seg. 1	Seg. 2	Seg. 3	Seg. 4	Seg. 5	Lap Time	km/h	Local Time
1	7.971	23.571	29.501	19.435	27.941	1'48.419 P		13:30'08.957
2	3.753	19.601	29.974	18.564	33.658	1'45.550	260.9	13:31'57.376
3	3.761	19.427	29.440	18.679	30.601	1'41.908	260.2	13:33'42.926
4	3.824	19.733	28.181	18.440	27.226	1'37.404	257.1	13:35'24.834
5	3.828	19.535	28.026	18.402	27.266	1'37.057	256.5	13:37'02.238
6	3.817	19.657	28.086	18.468	27.273	1'37.301	257.1	13:38'39.295
7	3.836	19.559	29.226	18.591	28.442	1'39.654	254.7	13:40'16.596
8	3.853	19.679	28.376	18.568	27.328	1'37.804	254.7	13:41'56.250
9	3.828	19.629	28.100	18.354	27.509	1'37.420	255.9	13:43'34.054
								13:45'11.474

17° 83 L. EPIS (1'38.049)

Lap	Seg. 1	Seg. 2	Seg. 3	Seg. 4	Seg. 5	Lap Time	km/h	Local Time
1			29.078	19.171	27.708	1'47.494 P		13:30'03.479
2	3.872	20.106	28.410	18.772	27.501	1'38.661	252.9	13:31'50.973
3	3.760	19.930	28.256	18.833	27.313	1'38.092	255.9	13:33'29.634
4	3.854	20.013	28.172	18.669	27.341	1'38.049	255.3	13:35'07.726
5	3.810	20.136	36.669	19.066	1'50.971	3'10.652 P	259.0	13:36'45.775
6			28.832	19.074	28.238	1'46.032 P		13:39'56.427
7	3.883	19.850	28.251	18.752	29.209	1'39.945	252.9	13:41'42.459
8	3.815	19.694	28.442	18.735	27.633	1'38.319	257.8	13:43'22.404
								13:45'00.723

P = Pits In/Out - C = Lap-Time Cancelled





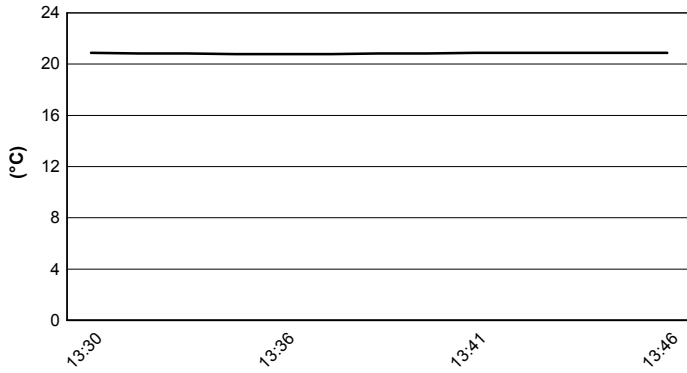
Phillip Island 4.445 m

Australian Round, 26-27-28 February 2016

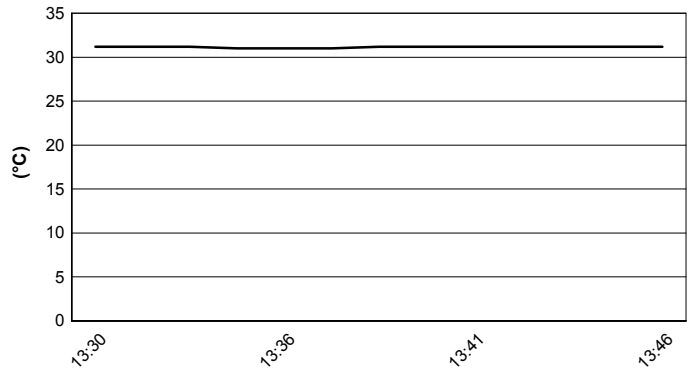
World Supersport - Weather Report Superpole 1

Session started 13:30 Session ended 13:46

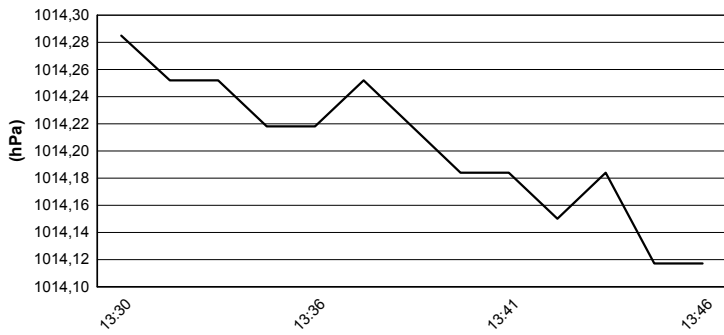
Air Temperature



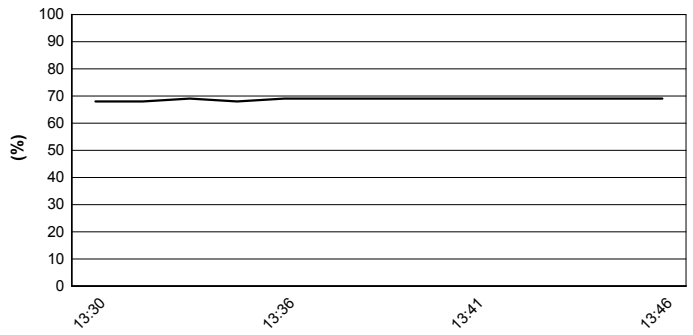
Track Temperature



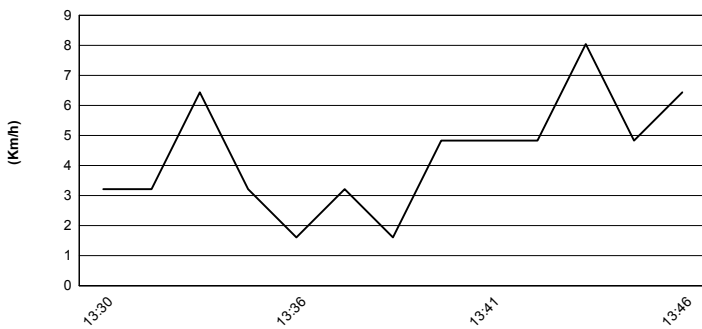
Air Pressure



Humidity



Wind Speed



Wind Direction

