

Aragon Round, 1-2-3 April 2016 World Superbike - Results Superpole 1

No.	Rider	Nat	Team	Bike	Time	Gap	Rel.	Laps	Speed	
									Avg	Max
1*	81 J. TORRES	ESP	Althea BMW Racing Team	BMW S1000 RR	1'50.352			6	165,626	304,2
2*	50 S. GUINTOLI	FRA	Pata Yamaha Official WorldSBK Team	Yamaha YZF R1	1'50.482	0.130	0.130	6	165,431	305,9
3	21 M. REITERBERGER	GER	Althea BMW Racing Team	BMW S1000 RR	1'50.938	0.586	0.456	6	164,751	307,7
4	40 R. RAMOS	ESP	Team GoEleven	Kawasaki ZX-10R	1'51.560	1.208	0.622	6	163,833	297,5
5	17 K. ABRAHAM	CZE	Milwaukee BMW	BMW S1000 RR	1'52.052	1.700	0.492	7	163,114	305,9
6	15 A. DE ANGELIS	RSM	IodaRacing Team	Aprilia RSV4 RF	1'52.173	1.821	0.121	7	162,938	314,0
7	151 M. BAIOTTO	ITA	VFT Racing	Ducati 1199 Panigale R	1'52.246	1.894	0.073	6	162,832	295,9
8	25 J. BROOKES	AUS	Milwaukee BMW	BMW S1000 RR	1'52.443	2.091	0.197	7	162,546	297,5
9	20 S. BARRIER	FRA	Pedercini Racing	Kawasaki ZX-10R	1'53.169	2.817	0.726	6	161,504	302,5
10	94 M. LUSSIANA	FRA	Team ASPI	BMW S1000 RR	1'54.042	3.690	0.873	6	160,267	291,9
11	9 D. SCHMITTER	SUI	Grillini Racing Team	Kawasaki ZX-10R	1'54.569	4.217	0.527	6	159,530	294,3
12	11 S. AL SULAITI	QAT	Pedercini Racing	Kawasaki ZX-10R	1'54.719	4.367	0.150	6	159,321	291,1
13	56 P. SEBESTYÉN	HUN	Team Tóth	Yamaha YZF R1	1'55.444	5.092	0.725	6	158,321	289,5
14	16 J. HOOK	AUS	Grillini Racing Team	Kawasaki ZX-10R	1'56.023	5.671	0.579	6	157,531	292,7
15	10 I. TÓTH	HUN	Team Tóth	Yamaha YZF R1	1'57.217	6.865	1.194	6	155,926	291,9

* Qualified to Superpole 2

AIR	Humidity:	52%	Temp:	10°C
TRACK	Condition:	Dry	Temp:	16°C

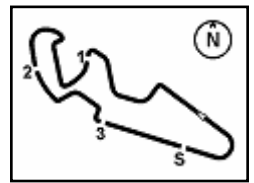
Lap Record:	2015 L.Haslam	1'49.664	166,670	Km/h
Best Lap:	2015 L.Haslam	1'49.664	166,670	Km/h

02/04/2016 Start 10:30 End 10:48

The results are provisional until the end of the time limit for protests and appeals and the completion of the technical checks.

FCR PERGGIA TIMING





Aragon Round, 1-2-3 April 2016 World Superbike - Results Superpole 1

Session Highlights

10.30.06 Start
10.48.01 End Of Session

Fastest Laps Sequence

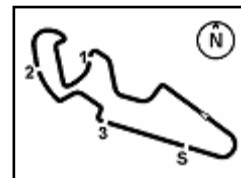
No.	Rider	Nat	Team	Bike	Local Time	Time	Gap	Avg
25	J. BROOKES	AUS	Milwaukee BMW	BMW S1000 RR	10:33'53.003	1'57.377		155,714
81	J. TORRES	ESP	Althea BMW Racing Team	BMW S1000 RR	10:33'59.543	1'52.591	-4.786	162,333
40	R. RAMOS	ESP	Team GoEleven	Kawasaki ZX-10R	10:34'39.578	1'52.208	-0.383	162,887
81	J. TORRES	ESP	Althea BMW Racing Team	BMW S1000 RR	10:35'51.700	1'52.157	-0.051	162,961
21	M. REITERBERGER	GER	Althea BMW Racing Team	BMW S1000 RR	10:36'09.430	1'51.380	-0.777	164,098
50	S. GUINTOLI	FRA	Pata Yamaha Official WorldSBK Team	Yamaha YZF R1	10:36'12.886	1'50.771	-0.609	165,000
50	S. GUINTOLI	FRA	Pata Yamaha Official WorldSBK Team	Yamaha YZF R1	10:44'51.309	1'50.594	-0.177	165,264
81	J. TORRES	ESP	Althea BMW Racing Team	BMW S1000 RR	10:45'12.888	1'50.352	-0.242	165,626

02/04/2016 Start 10:30 End 10:48

The results are provisional until the end of the time limit for protests and appeals and the completion of the technical checks.

FICR PERIODIC TIMING




Aragon Round, 1-2-3 April 2016
World Superbike - Best Sector & Speed Superpole 1

MotorLand Aragon 5.077 m

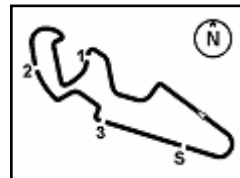
Best Lap

1	81 J. TORRES	BMW S1000 RR	1'50.352
2	50 S. GUINTOLI	Yamaha YZF R1	1'50.482
3	21 M. REITERBERGER	BMW S1000 RR	1'50.938
4	40 R. RAMOS	Kawasaki ZX-10R	1'51.560
5	17 K. ABRAHAM	BMW S1000 RR	1'52.052
6	15 A. DE ANGELIS	Aprilia RSV4 RF	1'52.173
7	151 M. BAIOTTO	Ducati 1199 Panigale R	1'52.246
8	25 J. BROOKES	BMW S1000 RR	1'52.443
9	20 S. BARRIER	Kawasaki ZX-10R	1'53.169
10	94 M. LUSSIANA	BMW S1000 RR	1'54.042
11	9 D. SCHMITTER	Kawasaki ZX-10R	1'54.569
12	11 S. AL SULAITI	Kawasaki ZX-10R	1'54.719
13	56 P. SEBESTYÉN	Yamaha YZF R1	1'55.444
14	16 J. HOOK	Kawasaki ZX-10R	1'56.023
15	10 I. TÓTH	Yamaha YZF R1	1'57.217

Top Speeds

1	15 A. DE ANGELIS	Aprilia RSV4 RF	314.0
2	21 M. REITERBERGER	BMW S1000 RR	307.7
3	50 S. GUINTOLI	Yamaha YZF R1	305.9
4	17 K. ABRAHAM	BMW S1000 RR	305.9
5	81 J. TORRES	BMW S1000 RR	304.2
6	20 S. BARRIER	Kawasaki ZX-10R	302.5
7	25 J. BROOKES	BMW S1000 RR	297.5
8	40 R. RAMOS	Kawasaki ZX-10R	297.5
9	151 M. BAIOTTO	Ducati 1199 Panigale R	295.9
10	9 D. SCHMITTER	Kawasaki ZX-10R	294.3
11	16 J. HOOK	Kawasaki ZX-10R	292.7
12	94 M. LUSSIANA	BMW S1000 RR	291.9
13	10 I. TÓTH	Yamaha YZF R1	291.9
14	11 S. AL SULAITI	Kawasaki ZX-10R	291.1
15	56 P. SEBESTYÉN	Yamaha YZF R1	289.5

Seg. 1		Seg. 2		Seg. 3		Seg. 4		Seg. 5			
1	50 S. GUINTOLI	31.436	1	81 J. TORRES	31.148	1	15 A. DE ANGELIS	10.693	1	50 S. GUINTOLI	15.332
2	81 J. TORRES	31.456	2	50 S. GUINTOLI	31.203	2	81 J. TORRES	10.830	2	81 J. TORRES	15.365
3	21 M. REITERBERG	31.552	3	21 M. REITERBERG	31.368	3	50 S. GUINTOLI	10.943	3	17 K. ABRAHAM	15.497
4	40 R. RAMOS	31.962	4	40 R. RAMOS	31.384	4	40 R. RAMOS	10.983	4	25 J. BROOKES	15.519
5	15 A. DE ANGELIS	32.096	5	151 M. BAIOTTO	31.574	5	81 J. TORRES	11.003	5	21 M. REITERBERG	15.529
6	25 J. BROOKES	32.112	6	15 A. DE ANGELIS	31.668	6	40 R. RAMOS	11.071	6	15 A. DE ANGELIS	15.570
7	151 M. BAIOTTO	32.125	7	17 K. ABRAHAM	31.669	7	25 J. BROOKES	11.078	7	40 R. RAMOS	15.590
8	17 K. ABRAHAM	32.166	8	25 J. BROOKES	31.834	8	9 D. SCHMITTER	11.106	8	151 M. BAIOTTO	15.693
9	20 S. BARRIER	32.400	9	20 S. BARRIER	31.919	9	151 M. BAIOTTO	11.153	9	20 S. BARRIER	15.702
10	94 M. LUSSIANA	32.528	10	11 S. AL SULAITI	32.087	10	20 S. BARRIER	11.160	10	94 M. LUSSIANA	15.936
11	11 S. AL SULAITI	32.677	11	94 M. LUSSIANA	32.096	11	16 J. HOOK	11.162	11	9 D. SCHMITTER	15.970
12	9 D. SCHMITTER	32.721	12	9 D. SCHMITTER	32.267	12	56 P. SEBESTYÉN	11.176	12	56 P. SEBESTYÉN	16.161
13	56 P. SEBESTYÉN	32.946	13	16 J. HOOK	32.458	13	94 M. LUSSIANA	11.248	13	11 S. AL SULAITI	16.211
14	16 J. HOOK	32.992	14	56 P. SEBESTYÉN	32.541	14	11 S. AL SULAITI	11.269	14	10 I. TÓTH	16.288
15	10 I. TÓTH	33.664	15	10 I. TÓTH	33.146	15	10 I. TÓTH	11.318	15	16 J. HOOK	16.392

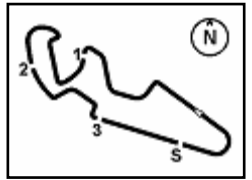


MotorLand Aragon 5.077 m

1 / 1

Aragon Round, 1-2-3 April 2016 World Superbike - Ideal Times Superpole 1

No. Rider	Nat	Bike	Seg. 1 Diff. 1	Seg. 2 Diff. 2	Seg. 3 Diff. 3	Seg. 4 Diff. 4	Seg. 5 Diff. 5	Ideal Time Best Lap	Pos.	Diff.
1 81 J. TORRES	ESP	BMW S1000 RR	31.456	31.148	21.327	11.003 0.043	15.365 0.010	1'50.299 1'50.352	1	0.053
2 50 S. GUINTOLI	FRA	Yamaha YZF R1	31.436	31.203 0.085	21.505 0.009	10.830	15.332 0.082	1'50.306 1'50.482	2	0.176
3 21 M. REITERBERGER	GER	BMW S1000 RR	31.552 0.063	31.368	21.318 0.165	10.943	15.529	1'50.710 1'50.938	3	0.228
4 40 R. RAMOS	ESP	Kawasaki ZX-10R	31.962	31.384	21.553	11.071	15.590	1'51.560 1'51.560	4	0.000
5 15 A. DE ANGELIS	RSM	Aprilia RSV4 RF	32.096	31.668	21.923 0.130	10.693 0.071	15.570 0.022	1'51.950 1'52.173	6	0.223
6 17 K. ABRAHAM	CZE	BMW S1000 RR	32.166	31.669	21.697	10.983 0.040	15.497	1'52.012 1'52.052	5	0.040
7 151 M. BAIOTTO	ITA	Ducati 1199 Panigale R	32.125 0.034	31.574	21.667	11.153	15.693	1'52.212 1'52.246	7	0.034
8 25 J. BROOKES	AUS	BMW S1000 RR	32.112	31.834	21.804	11.078 0.096	15.519	1'52.347 1'52.443	8	0.096
9 20 S. BARRIER	FRA	Kawasaki ZX-10R	32.400	31.919 0.094	21.670 0.181	11.160 0.043	15.702	1'52.851 1'53.169	9	0.318
10 94 M. LUSSIANA	FRA	BMW S1000 RR	32.528	32.096	21.997	11.248 0.146	15.936 0.091	1'53.805 1'54.042	10	0.237
11 9 D. SCHMITTER	SUI	Kawasaki ZX-10R	32.721	32.267	22.142	11.106 0.363	15.970	1'54.206 1'54.569	11	0.363
12 11 S. AL SULAITI	QAT	Kawasaki ZX-10R	32.677	32.087	22.310 0.124	11.269	16.211 0.041	1'54.554 1'54.719	12	0.165
13 56 P. SEBESTYÉN	HUN	Yamaha YZF R1	32.946	32.541	22.356 0.067	11.176 0.133	16.161 0.064	1'55.180 1'55.444	13	0.264
14 16 J. HOOK	AUS	Kawasaki ZX-10R	32.992	32.458	22.545	11.162 0.382	16.392 0.092	1'55.549 1'56.023	14	0.474
15 10 I. TÓTH	HUN	Yamaha YZF R1	33.664	33.146	22.696	11.318 0.105	16.288	1'57.112 1'57.217	15	0.105
Overall Ideal Time			31.436	31.148	21.318	10.693	15.332	1'49.927		

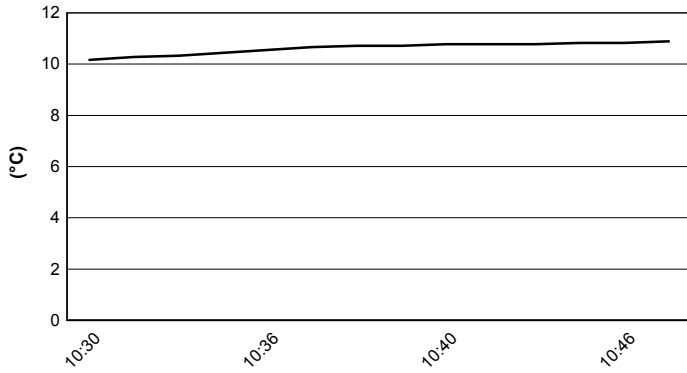


MotorLand Aragon 5.077 m

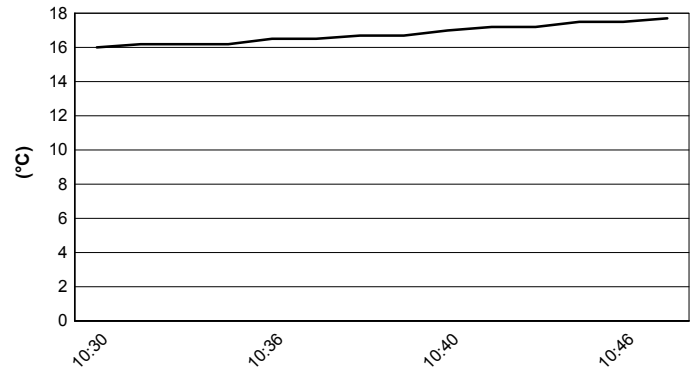
Aragon Round, 1-2-3 April 2016 World Superbike - Weather Report Superpole 1

Session started 10:30 Session ended 10:48

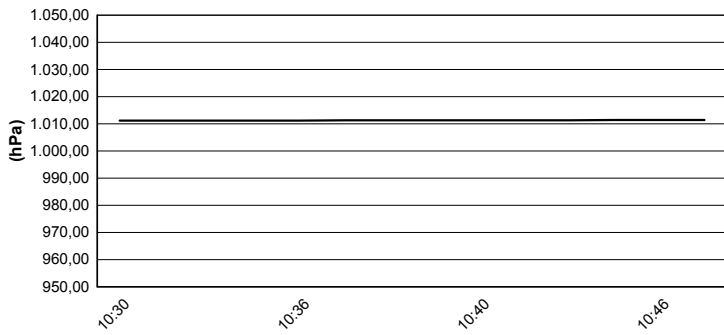
Air Temperature



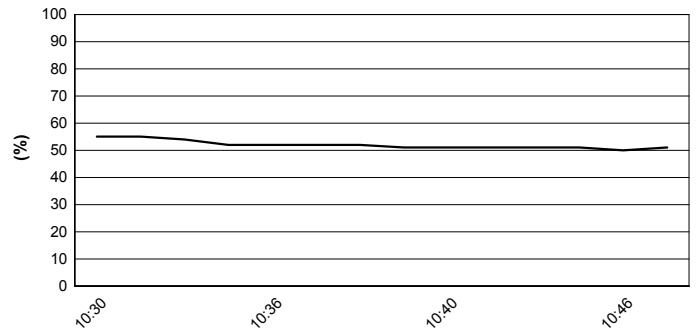
Track Temperature



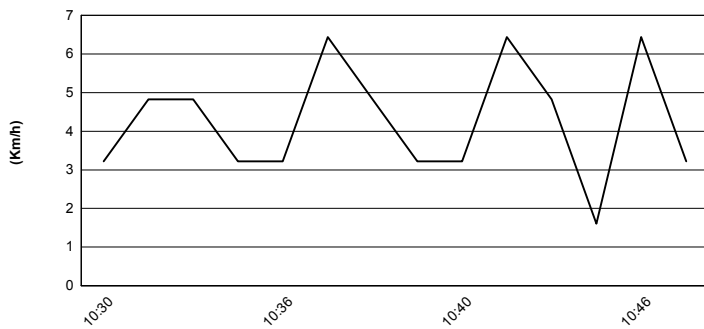
Air Pressure



Humidity



Wind Speed



Wind Direction

