

MotorLand Aragon 5.077 m

1 / 2

Aragon Round, 1-2-3 April 2016 Superstock 1000 - Results Warm-Up

No.	Rider	Nat	Team	Bike	Time	Gap	Rel.	Laps	Speed	
									Avg	Max
1	21 F. MARINO	FRA	PATA Yamaha Official Stock Team	Yamaha YZF R1	1'53.904			7	160,461	297,5
2	84 R. RUSSO	ITA	PATA Yamaha Official Stock Team	Yamaha YZF R1	1'54.066	0.162	0.162	7	160,234	295,1
3	36 L. MERCADO	ARG	Aruba.it Racing - Junior Team	Ducati 1199 Panigale R	1'54.152	0.248	0.086	7	160,113	297,5
4	2 R. TAMBURINI	ITA	Nuova M2 Racing	Aprilia RSV4 RF	1'54.180	0.276	0.028	6	160,074	300,0
5	35 R. DE ROSA	ITA	Althea BMW Racing Team	BMW S 1000 RR	1'54.200	0.296	0.020	6	160,046	295,9
6	5 M. FACCANI	ITA	Triple-M Racing	Ducati 1199 Panigale R	1'54.770	0.866	0.570	6	159,251	286,5
7	70 L. VITALI	ITA	Team 2R Racing	BMW S 1000 RR	1'55.083	1.179	0.313	6	158,818	290,3
8	121 A. ANDREOZZI	ITA	Team Pedercini	Kawasaki ZX-10R	1'55.109	1.205	0.026	7	158,782	288,0
9	41 F. D'ANNUNZIO	ITA	FDA Racing Team	BMW S 1000 RR	1'55.111	1.207	0.002	6	158,779	289,5
10	12 M. RINALDI	ITA	Aruba.it Racing - Junior Team	Ducati 1199 Panigale R	1'55.210	1.306	0.099	7	158,642	291,9
11	43 F. MASSEI	ITA	Team Trasimeno	Yamaha YZF R1	1'55.271	1.367	0.061	7	158,559	288,8
12	7 M. SCHEIB	CHI	TARGO Bank EasyRace SBK Team	BMW S 1000 RR	1'55.376	1.472	0.105	7	158,414	295,1
13	74 K. CALIA	ITA	Nuova M2 Racing	Aprilia RSV4 RF	1'55.454	1.550	0.078	3	158,307	292,7
14	87 L. MARCONI	ITA	Team Trasimeno	Yamaha YZF R1	1'55.459	1.555	0.005	7	158,300	294,3
15	59 A. MANTOVANI	ITA	Guandalini Racing Yamaha	Yamaha YZF R1	1'55.561	1.657	0.102	7	158,161	291,1
16	58 E. PUSCEDDU	ITA	SK-Racing Team by Barni	Ducati 1199 Panigale R	1'55.625	1.721	0.064	6	158,073	288,8
17	67 B. STARING	AUS	Agro On-Benjan-Kawasaki	Kawasaki ZX-10R	1'55.629	1.725	0.004	7	158,068	293,5
18	44 A. TUCCI	ITA	Berclaz Racing by MotoXracing	Yamaha YZF R1	1'55.648	1.744	0.019	6	158,042	291,9
19	11 J. GUARNONI	FRA	Pedercini Racing Kawasaki	Kawasaki ZX-10R	1'56.036	2.132	0.388	7	157,513	285,0
20	19 J. PUFFE	GER	Agro On-Benjan-Kawasaki	Kawasaki ZX-10R	1'56.079	2.175	0.043	7	157,455	288,0
21	69 D. MCFADDEN	RSA	Agro On-Benjan-Kawasaki	Kawasaki ZX-10R	1'56.106	2.202	0.027	7	157,418	288,8
22	123 L. SALVADORI	ITA	GP Project	Aprilia RSV4 RF	1'56.224	2.320	0.118	7	157,258	285,7
23	77 W. TESSELS	NED	MTM / HS Kawasaki	Kawasaki ZX-10R	1'56.224	2.320	0.000	7	157,258	292,7
24	3 S. SUCHET	SUI	Berclaz Racing by MotoXracing	Yamaha YZF R1	1'56.249	2.345	0.025	7	157,225	291,9
25	23 C. PONSSON	FRA	Pedercini Racing Kawasaki	Kawasaki ZX-10R	1'56.343	2.439	0.094	7	157,098	280,5
26	54 T. RAZGATLIOGLU	TUR	Kawasaki Puccetti Racing	Kawasaki ZX-10R	1'56.413	2.509	0.070	4	157,003	293,5
27	32 M. MOSER	GER	Triple-M Racing	Ducati 1199 Panigale R	1'56.503	2.599	0.090	6	156,882	278,4
28	16 G. BLACK	GBR	MTM / HS Kawasaki	Kawasaki ZX-10R	1'56.938	3.034	0.435	6	156,298	283,5
29	93 R. MERCANDELLI	ITA	Team Pedercini	Kawasaki ZX-10R	1'57.149	3.245	0.211	7	156,017	284,2
30	47 R. HARTOG	NED	Team Hartog - Jenik - Against Cance	Kawasaki ZX-10R	1'57.348	3.444	0.199	7	155,752	285,0
31	95 M. POPOV	CZE	DRT Racing Team	Yamaha YZF R1	1'57.702	3.798	0.354	7	155,284	288,8
32	9 T. FINSTERBUSCH	GER	BCC-Racing Team	Yamaha YZF R1	1'57.733	3.829	0.031	7	155,243	289,5
33	13 F. SANCHIONI	ITA	PUNTO MOTO Corse by Clasitaly	Kawasaki ZX-10R	1'57.847	3.943	0.114	7	155,093	287,2
34	51 E. VIONNET	SUI	Motos Vionnet	BMW S 1000 RR	1'57.863	3.959	0.016	7	155,072	296,7
35	26 M. SBAIZ	ITA	Berclaz Racing by MotoXracing	Yamaha YZF R1	1'58.255	4.351	0.392	7	154,558	287,2
36	91 L. OPPEDISANO	ITA	Saviofficina Racingteam	Kawasaki ZX-10R	1'58.266	4.362	0.011	7	154,543	288,0
37	6 A. SIMONESCHI	ITA	BWG Racing	Kawasaki ZX-10R	1'58.433	4.529	0.167	7	154,325	286,5
38	99 F. CAVALLI	ITA	PUNTO MOTO Corse by Clasitaly	Kawasaki ZX-10R	1'58.778	4.874	0.345	7	153,877	285,0
39	18 L. DE ULACIA	ESP	Kawasaki Palmeto PL Racing	Kawasaki ZX-10R	1'59.112	5.208	0.334	7	153,445	282,7
40	34 T. TOFFEL	SUI	Motos Vionnet	BMW S 1000 RR	2'00.103	6.199	0.991	7	152,179	287,2

AIR	Humidity:	46%	Temp:	16°C
TRACK	Condition:	Dry	Temp:	18°C

Lap Record:	2015 L.Savadori	1'52.577	162,350	Km/h
Best Lap:	2015 L.Savadori	1'52.577	162,350	Km/h

Start 03/04/2016 09:50
End 10:07

The results are provisional until the end of the time limit for protests and appeals and the completion of the technical checks.

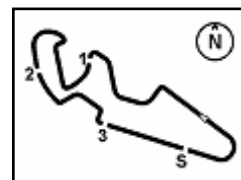
FICR PERUGIA TIMING



Official Tyre Supplier



Official Timekeeper



Aragon Round, 1-2-3 April 2016 Superstock 1000 - Results Warm-Up

Session Highlights

09.50.03		Start
09.58.39	Calia	Crashed - Rider OK - Turn 9
10.00.37	Russo	On the Gravel - Re-Joined - Turn 1
10.01.05	Razgattioglu	Crashed - Rider OK - Turn 1
10.07.30		End Of Session

Fastest Laps Sequence

No.	Rider	Nat	Team	Bike	Local Time	Time	Gap	Avg
21	F. MARINO	FRA	PATA Yamaha Official Stock Team	Yamaha YZF R1	09:53'51.431	1'55.551		158,174
84	R. RUSSO	ITA	PATA Yamaha Official Stock Team	Yamaha YZF R1	09:54'19.805	1'54.465	-1.086	159,675
21	F. MARINO	FRA	PATA Yamaha Official Stock Team	Yamaha YZF R1	09:57'40.150	1'54.134	-0.331	160,138
21	F. MARINO	FRA	PATA Yamaha Official Stock Team	Yamaha YZF R1	09:59'34.054	1'53.904	-0.230	160,461

03/04/2016 Start 09:50 End 10:07

The results are provisional until the end of the time limit for protests and appeals and the completion of the technical checks.

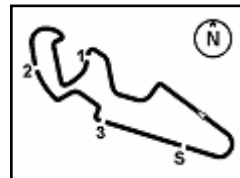
FICR PERUGIA TIMING



Official Tyre Supplier



Official Timekeeper



MotorLand Aragon 5.077 m

1 / 2

Aragon Round, 1-2-3 April 2016

Superstock 1000 - Ideal Times Warm-Up

No.	Rider	Nat	Bike	Seg. 1 Diff. 1	Seg. 2 Diff. 2	Seg. 3 Diff. 3	Seg. 4 Diff. 4	Seg. 5 Diff. 5	Ideal Time Best Lap	Pos.	Diff.
1	84 R. RUSSO	ITA	Yamaha YZF R1	32.525 0.093	32.090	21.825 0.227	11.333 0.129	15.772 0.072	1'53.545 1'54.066	2	0.521
2	21 F. MARINO	FRA	Yamaha YZF R1	32.421	32.126 0.090	22.055 0.025	11.288 0.105	15.794	1'53.684 1'53.904	1	0.220
3	36 L. MERCADO	ARG	Ducati 1199 Panigale R	32.436	32.297 0.095	21.906	11.179 0.075	16.098 0.066	1'53.916 1'54.152	3	0.236
4	2 R. TAMBURINI	ITA	Aprilia RSV4 RF	32.484	32.147	22.206 0.112	11.126 0.088	15.984 0.033	1'53.947 1'54.180	4	0.233
5	35 R. DE ROSA	ITA	BMW S 1000 RR	32.704	32.190 0.050	22.107 0.014	11.114 0.006	15.927 0.088	1'54.042 1'54.200	5	0.158
6	5 M. FACCANI	ITA	Ducati 1199 Panigale R	32.595	32.346 0.145	22.065	11.475 0.005	15.954 0.185	1'54.435 1'54.770	6	0.335
7	41 F. D'ANNUNZIO	ITA	BMW S 1000 RR	32.961	32.130 0.392	22.126	11.333 0.066	16.103	1'54.653 1'55.111	9	0.458
8	121 A. ANDREOZZI	ITA	Kawasaki ZX-10R	32.783	32.167	22.356 0.406	11.391 0.031	15.975	1'54.672 1'55.109	8	0.437
9	87 L. MARCONI	ITA	Yamaha YZF R1	32.961 0.130	32.438 0.234	22.141	11.349	15.986 0.220	1'54.875 1'55.459	14	0.584
10	70 L. VITALI	ITA	BMW S 1000 RR	32.601 0.135	32.590	22.154	11.430 0.009	16.125 0.039	1'54.900 1'55.083	7	0.183
11	59 A. MANTOVANI	ITA	Yamaha YZF R1	33.044	32.263 0.171	22.398 0.276	11.259	16.060 0.090	1'55.024 1'55.561	15	0.537
12	12 M. RINALDI	ITA	Ducati 1199 Panigale R	32.829	32.552 0.083	22.208	11.369 0.026	16.109 0.034	1'55.067 1'55.210	10	0.143
13	43 F. MASSEI	ITA	Yamaha YZF R1	32.728	32.532 0.135	22.422	11.403	15.996 0.055	1'55.081 1'55.271	11	0.190
14	7 M. SCHEIB	CHI	BMW S 1000 RR	33.062	32.356	22.491	11.071 0.190	16.110 0.096	1'55.090 1'55.376	12	0.286
15	67 B. STARING	AUS	Kawasaki ZX-10R	33.001 0.072	32.592	22.272	11.317 0.224	16.049 0.102	1'55.231 1'55.629	17	0.398
16	44 A. TUCCI	ITA	Yamaha YZF R1	32.867 0.074	32.563 0.063	22.445 0.004	11.327 0.130	16.106 0.069	1'55.308 1'55.648	18	0.340
17	74 K. CALIA	ITA	Aprilia RSV4 RF	32.827 0.035	32.697 0.009	22.505	11.187	16.194	1'55.410 1'55.454	13	0.044
18	69 D. MCFADDEN	RSA	Kawasaki ZX-10R	33.113 0.006	32.505 0.202	22.223 0.274	11.496 0.035	16.143 0.109	1'55.480 1'56.106	21	0.626
19	58 E. PUSCEDDU	ITA	Ducati 1199 Panigale R	32.949	32.476	22.680	11.390 0.019	16.111	1'55.606 1'55.625	16	0.019
20	19 J. PUFFE	GER	Kawasaki ZX-10R	33.189 0.207	32.676	22.404	11.377	16.177 0.049	1'55.823 1'56.079	20	0.256
21	77 W. TESSELS	NED	Kawasaki ZX-10R	33.181 0.096	32.714 0.073	22.516	11.374 0.120	16.047 0.103	1'55.832 1'56.224	23	0.392
22	11 J. GUARNONI	FRA	Kawasaki ZX-10R	33.115	32.666 0.060	22.431 0.124	11.525	16.102 0.013	1'55.839 1'56.036	19	0.197
23	123 L. SALVADORI	ITA	Aprilia RSV4 RF	33.205 0.076	32.499	22.490 0.075	11.518 0.057	16.231 0.073	1'55.943 1'56.224	22	0.281
24	3 S. SUCHET	SUI	Yamaha YZF R1	33.230 0.085	32.887 0.110	22.484	11.259 0.038	16.147 0.009	1'56.007 1'56.249	24	0.242
25	54 T. RAZGATLIOGLU	TUR	Kawasaki ZX-10R	33.232 0.047	33.073	22.337 0.228	11.301 0.075	16.120	1'56.063 1'56.413	26	0.350
26	32 M. MOSER	GER	Ducati 1199 Panigale R	33.017 0.032	32.694	22.468 0.363	11.659	16.246 0.024	1'56.084 1'56.503	27	0.419
27	23 C. PONSSON	FRA	Kawasaki ZX-10R	33.240	32.562	22.566 0.048	11.615 0.029	16.216 0.067	1'56.199 1'56.343	25	0.144
28	16 G. BLACK	GBR	Kawasaki ZX-10R	33.366 0.183	32.936 0.023	22.684	11.565 0.024	16.157	1'56.708 1'56.938	28	0.230
29	9 T. FINSTERBUSCH	GER	Yamaha YZF R1	33.308	33.222 0.063	22.855 0.332	11.421 0.158	16.238 0.136	1'57.044 1'57.733	32	0.689
30	95 M. POPOV	CZE	Yamaha YZF R1	33.485	33.186 0.004	22.511 0.501	11.465 0.021	16.457 0.072	1'57.104 1'57.702	31	0.598
31	93 R. MERCANDELLI	ITA	Kawasaki ZX-10R	33.335	33.300	22.687	11.526	16.301	1'57.149 1'57.149	29	0.000
32	47 R. HARTOG	NED	Kawasaki ZX-10R	33.609 0.149	33.059	22.798	11.448 0.027	16.258	1'57.172 1'57.348	30	0.176
33	51 E. VIONNET	SUI	BMW S 1000 RR	33.645 0.279	33.161	22.863	11.264 0.065	16.398 0.188	1'57.331 1'57.863	34	0.532

03/04/2016

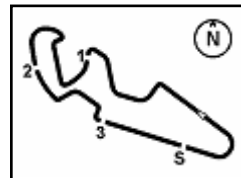
FICR PERUGIA TIMING



Official Tyre Supplier



Official Timekeeper



MotorLand Aragon 5.077 m

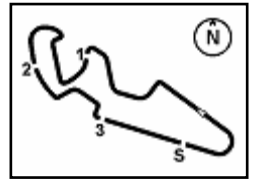
2 / 2

Aragon Round, 1-2-3 April 2016

Superstock 1000 - Ideal Times Warm-Up

No.	Rider	Nat	Bike	Seg. 1 Diff. 1	Seg. 2 Diff. 2	Seg. 3 Diff. 3	Seg. 4 Diff. 4	Seg. 5 Diff. 5	Ideal Time Best Lap	Pos.	Diff.
34	13 F. SANCHIONI	ITA	Kawasaki ZX-10R	33.939	33.112	22.832 0.097	11.466 0.066	16.275 0.060	1'57.624 1'57.847	33	0.223
35	91 L. OPPEDISANO	ITA	Kawasaki ZX-10R	33.796	33.211	22.834 0.247	11.389 0.128	16.599 0.062	1'57.829 1'58.266	36	0.437
36	26 M. SBAIZ	ITA	Yamaha YZF R1	33.966	33.120	22.841	11.354 0.404	16.570	1'57.851 1'58.255	35	0.404
37	6 A. SIMONESCHI	ITA	Kawasaki ZX-10R	33.725 0.118	33.149 0.272	23.080	11.549 0.035	16.505	1'58.008 1'58.433	37	0.425
38	99 F. CAVALLI	ITA	Kawasaki ZX-10R	34.138	33.448	23.102 0.246	11.471	16.342 0.031	1'58.501 1'58.778	38	0.277
39	18 L. DE ULACIA	ESP	Kawasaki ZX-10R	34.091 0.124	33.536	23.100	11.684 0.058	16.423 0.096	1'58.834 1'59.112	39	0.278
40	34 T. TOFFEL	SUI	BMW S 1000 RR	34.478	33.664 0.122	23.235 0.217	11.335 0.264	16.788	1'59.500 2'00.103	40	0.603
Overall Ideal Time				32.421	32.090	21.825	11.071	15.772	1'53.179		



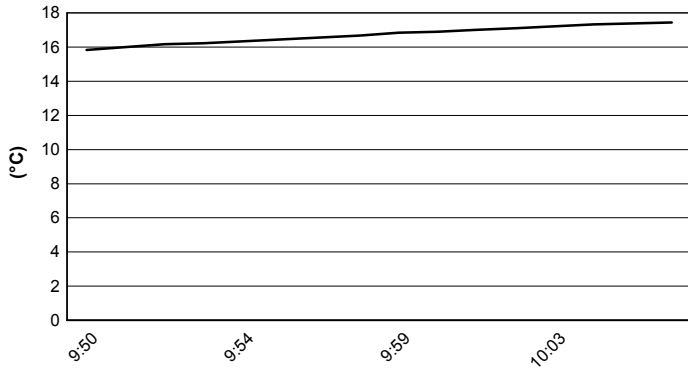


MotorLand Aragon 5.077 m

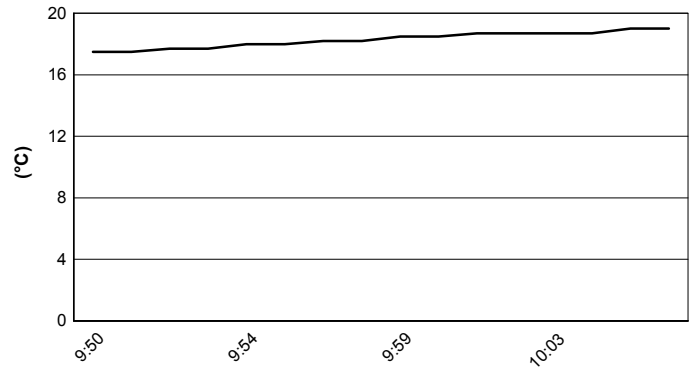
Aragon Round, 1-2-3 April 2016 Superstock 1000 - Weather Report Warm-Up

Session started 9:50 Session ended 10:07

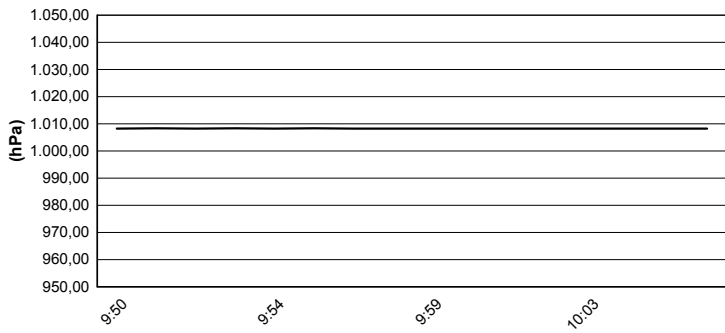
Air Temperature



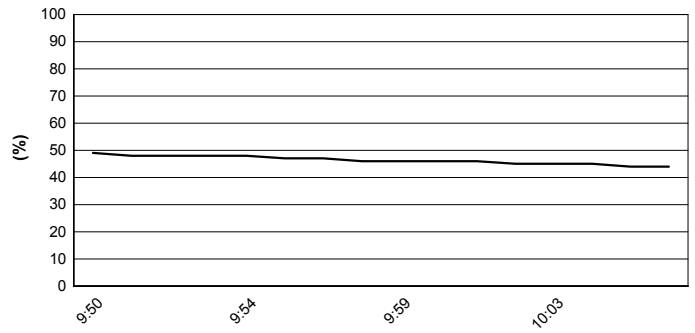
Track Temperature



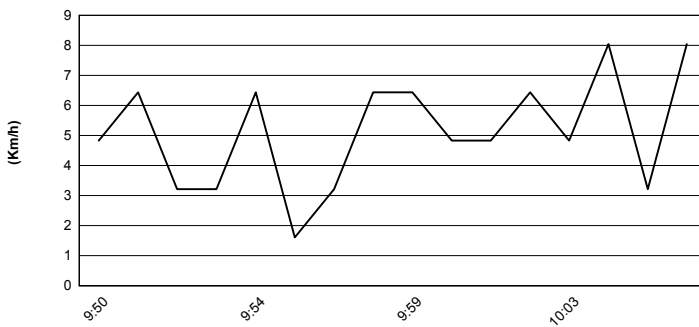
Air Pressure



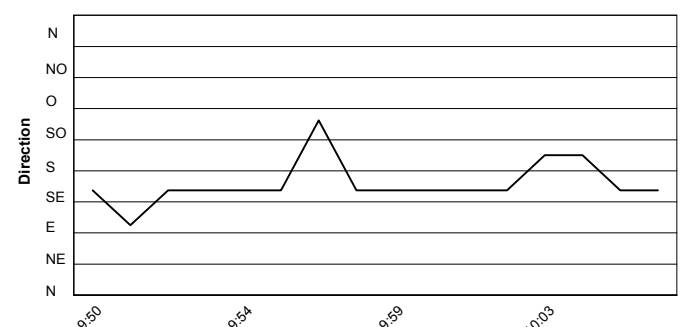
Humidity

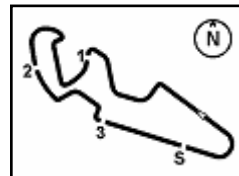


Wind Speed



Wind Direction





MotorLand Aragon 5.077 m

Aragon Round, 1-2-3 April 2016

Superstock 1000 - Starting Grid

13 Laps x 5,077 km = 66,001 km



				2	1	
	3		12		21	
	5 FACCANI M. Ducati 1'52.927		RINALDI M. Ducati 1'52.845		MARINO F. Yamaha 1'52.773	1
		5		4		
6		2 TAMBURINI R. Aprilia 1'53.005		84 RUSSO R. Yamaha 1'52.960		2
35 DE ROSA R. BMW 1'53.022						
	9		8		7	
	74 CALIA K. Aprilia 1'54.073		7 SCHEIB M. BMW 1'53.895		36 MERCADO L. Ducati 1'53.814	3
		11		10		
12		54 RAZGATLIOGLU T. Kawasaki 1'54.481		41 D'ANNUNZIO F. BMW 1'54.098		4
11 GUARNONI J. Kawasaki 1'54.532						
	15		14		13	
	87 MARCONI L. Yamaha 1'54.701		44 TUCCI A. Yamaha 1'54.684		70 VITALI L. BMW 1'54.567	5
		17		16		
18		59 MANTOVANI A. Yamaha 1'54.884		58 PUSCEDDU E. Ducati 1'54.833		6
67 STARING B. Kawasaki 1'54.960						
	21		20		19	
	77 TESSELS W. Kawasaki 1'55.122		123 SALVADORI L. Aprilia 1'55.029		23 PONSSON C. Kawasaki 1'55.025	7
		23		22		
24		3 SUCHET S. Yamaha 1'55.309		43 MASSEI F. Yamaha 1'55.125		8
32 MOSER M. Ducati 1'55.412						
	27		26		25	
	121 ANDREOZZI A. Kawasaki 1'55.626		16 BLACK G. Kawasaki 1'55.472		69 MCFADDEN D. Kawasaki 1'55.437	9
		29		28		
30		93 MERCANELLI R. Kawasaki 1'56.638		19 PUFFE J. Kawasaki 1'55.730		10
9 FINSTERBUSCH T. Yamaha 1'56.925						
	33		32		31	
	91 OPPEDISANO L. Kawasaki 1'57.086		13 SANCHIONI F. Kawasaki 1'57.078		51 VIONNET E. BMW 1'56.973	11
		35		34		
36		47 HARTOG R. Kawasaki 1'57.194		95 POPOV M. Yamaha 1'57.151		12
99 CAVALLI F. Kawasaki 1'57.714						
	39		38		37	
	6 SIMONESCHI A. Kawasaki 2'00.124		18 DE ULACIA L. Kawasaki 1'58.164		26 SBAIZ M. Yamaha 1'57.915	13
				40		
				34 TOFFEL T. BMW 2'00.704		14

Jury President

..... Race Director

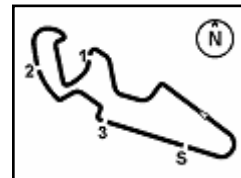
FICR PERUGIA TIMING



Official Tyre Supplier



Official Timekeeper



MotorLand Aragon 5.077 m

Aragon Round, 1-2-3 April 2016

Superstock 1000 - Starting Grid

13 Laps x 5,077 km = 66,001 km

REVISED



			2			1											
			5			12			21								
			FACCANI M. Ducati 1'52.927			RINALDI M. Ducati 1'52.845			MARINO F. Yamaha 1'52.773			1					
									4								
			6			5			84								
			DE ROSA R. BMW 1'53.022			TAMBURINI R. Aprilia 1'53.005			RUSSO R. Yamaha 1'52.960			2					
			9			8			7			36					
			CALIA K. Aprilia 1'54.073			SCHEIB M. BMW 1'53.895			MERCADO L. Ducati 1'53.814			3					
			12			11			10								
			VITALI L. BMW 1'54.567			GUARNONI J. Kawasaki 1'54.532			D'ANNUNZIO F. BMW 1'54.098			4					
			15			14			13								
			PUSCEDDU E. Ducati 1'54.833			MARCONI L. Yamaha 1'54.701			TUCCIA A. Yamaha 1'54.684			5					
			18			17			16								
			PONSSON C. Kawasaki 1'55.025			STARING B. Kawasaki 1'54.960			MANTOVANI A. Yamaha 1'54.884			6					
			21			20			19								
			MASSEI F. Yamaha 1'55.125			TESSELS W. Kawasaki 1'55.122			SALVADORI L. Aprilia 1'55.029			7					
			24			23			22								
			MCFADDEN D. Kawasaki 1'55.437			MOSER M. Ducati 1'55.412			SUCHET S. Yamaha 1'55.309			8					
			27			26			25								
			PUFFE J. Kawasaki 1'55.730			ANDREOZZI A. Kawasaki 1'55.626			BLACK G. Kawasaki 1'55.472			9					
			30			29			28								
			VIONNET E. BMW 1'56.973			FINSTERBUSCH T. Yamaha 1'56.925			MERCANDELLI R. Kawasaki 1'56.638			10					
			33			32			31								
			POPOV M. Yamaha 1'57.151			OPPEDISANO L. Kawasaki 1'57.086			SANCHIONI F. Kawasaki 1'57.078			11					
			36			35			34								
			SBAIZ M. Yamaha 1'57.915			CAVALLI F. Kawasaki 1'57.714			HARTOG R. Kawasaki 1'57.194			12					
			39			38			37								
			TOFFEL T. BMW 2'00.704			SIMONESCHI A. Kawasaki 2'00.124			DE ULACIA L. Kawasaki 1'58.164			13					
												14					

Jury President

..... Race Director

FCR PERUGIA TIMING



Official Tyre Supplier



Official Timekeeper