

Spanish Round, 14-15-16 October 2016

World Supersport - Results Warm Up

Jerez 4.423 m

1 / 2

No.	Rider	Nat	Team	Bike	Class	Time	Gap	Rel.	Laps	Speed	
										Avg	Max
1	21 R. KRUMMENACHER	SUI	Kawasaki Puccetti Racing	Kawasaki ZX-6R		1'44.207			5	152,800	245,5
2	66 N. TUULI	FIN	Kallio Racing	Yamaha YZF R6		1'44.303	0.096	0.096	10	152,659	243,2
3	1 K. SOFUOGLU	TUR	Kawasaki Puccetti Racing	Kawasaki ZX-6R		1'44.588	0.381	0.285	5	152,243	240,5
4	77 K. RYDE	GBR	Schmidt Racing	Kawasaki ZX-6R		1'44.898	0.691	0.310	5	151,793	244,3
5	86 A. BADOVINI	ITA	Gemar Balloons - Team Lorini	Honda CBR600RR		1'45.019	0.812	0.121	9	151,618	242,7
6	61 A. ZACCONE	ITA	San Carlo Team Italia	Kawasaki ZX-6R	ESS	1'45.064	0.857	0.045	10	151,553	242,2
7	64 F. CARICASULO	ITA	Bardahl Evan Bros. Honda Racing	Honda CBR600RR		1'45.082	0.875	0.018	10	151,527	243,8
8	111 K. SMITH	GBR	CIA Landlord Insurance Honda	Honda CBR600RR		1'45.278	1.071	0.196	10	151,245	239,5
9	55 I. MYKHALCHYK	UKR	DS Junior Team	Kawasaki ZX-6R	ESS	1'45.290	1.083	0.012	6	151,228	239,5
10	2 P. JACOBSEN	USA	Honda World Supersport Team	Honda CBR600RR		1'45.399	1.192	0.109	9	151,072	250,6
11	44 R. ROLFO	ITA	Team Factory Vamag	MV Agusta F3 675		1'45.445	1.238	0.046	9	151,006	243,8
12	81 L. STAPLEFORD	GBR	Profile Racing	Triumph Daytona 675		1'45.454	1.247	0.009	9	150,993	245,5
13	71 C. BERGMAN	SWE	CIA Landlord Insurance Honda	Honda CBR600RR		1'45.459	1.252	0.005	8	150,986	246,0
14	10 N. CALERO	ESP	Orelac Racing VerdNatura	Kawasaki ZX-6R		1'45.479	1.272	0.020	9	150,957	241,1
15	16 J. CLUZEL	FRA	MV Agusta Reparto Corse	MV Agusta F3 675		1'45.556	1.349	0.077	9	150,847	242,7
16	87 L. ZANETTI	ITA	GRT Racing Team	MV Agusta F3 675		1'45.709	1.502	0.153	6	150,629	241,6
17	65 M. CANDUCCI	ITA	GRT Racing Team	MV Agusta F3 675		1'45.940	1.733	0.231	9	150,300	243,2
18	63 Z. KHAIRUDDIN	MAS	Orelac Racing VerdNatura	Kawasaki ZX-6R		1'45.949	1.742	0.009	8	150,287	242,2
19	80 X. PINSACH	ESP	Gemar Balloons - Team Lorini	Honda CBR600RR		1'45.979	1.772	0.030	9	150,245	245,5
20	47 A. BASSANI	ITA	San Carlo Team Italia	Kawasaki ZX-6R	ESS	1'46.008	1.801	0.029	9	150,204	246,6
21	11 C. GAMARINO	ITA	Team GoEleven	Kawasaki ZX-6R		1'46.121	1.914	0.113	10	150,044	243,2
22	23 C. TANGRE	FRA	Team Yohann Moto Sport	Suzuki GSX-R600	ESS	1'46.387	2.180	0.266	4	149,669	234,3
23	6 D. STIRPE	ITA	Scuderia Maranga Racing	Kawasaki ZX-6R	ESS	1'46.516	2.309	0.129	5	149,487	241,6
24	69 O. JEZEK	CZE	Team GoEleven	Kawasaki ZX-6R		1'46.574	2.367	0.058	10	149,406	243,2
25	38 H. SOOMER	EST	Kallio Racing	Yamaha YZF R6		1'46.822	2.615	0.248	10	149,059	241,1
26	83 L. EPIS	AUS	Response RE Racing	Kawasaki ZX-6R		1'46.845	2.638	0.023	10	149,027	242,2
27	78 H. OKUBO	JPN	CIA Landlord Insurance Honda	Honda CBR600RR		1'46.963	2.756	0.118	10	148,863	242,2
28	12 C. GOBBI	ITA	VFT Racing	Yamaha YZF R6	ESS	1'46.985	2.778	0.022	6	148,832	238,9
29	35 S. HILL	GBR	CIA Landlord Insurance Honda	Honda CBR600RR		1'47.446	3.239	0.461	8	148,194	238,9
30	50 B. ORTT	CAN	WILSport Racedays Honda	Honda CBR600RR	ESS	1'48.962	4.755	1.516	9	146,132	237,9
31	20 D. LOUREIRO	RSA	WILSport Racedays Honda	Honda CBR600RR	ESS	1'49.050	4.843	0.088	9	146,014	236,3

AIR	Humidity:	80%	Temp:	16°C
TRACK	Condition:	Dry	Temp:	18°C

Records	Pole (SP2)	2016	K.Sofuoglu	1'42.969	154,640	Km/h
	Race	2013	S.Lowes	1'44.111	152,940	Km/h
	Circuit (SP2)	2016	K.Sofuoglu	1'42.969	154,640	Km/h

These data/results cannot be reproduced, stored and/or transmitted in whole or in part by any manner of electronic, mechanical, photocopying, recording, broadcasting or otherwise now known or herein after developed without the previous express consent by the copyright owner, except for reproduction in daily press and regular printed publications on sale to the public within 60 days of the event related to those data/results and always provided that copyright symbol appears together as follows below.

© DORNA WSBK ORGANIZATION Srl 2016

Start	End	The results are provisional until the end of the time limit for protests and appeals
16/10/2016 08:59	09:23	and the completion of the technical checks.

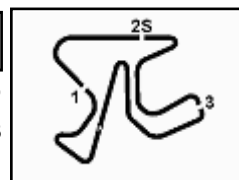
FICR PERUGIA TIMING



Official Tyre Supplier



Official Timekeeper



Spanish Round, 14-15-16 October 2016

World Supersport - Results Warm Up

Session Highlights

08.59.50		Start
09.10.27	Ryde	Technical Problem - Turn 5
09.10.43		RED FLAG
09.17.00		Session Restart
09.17.43		WorldSBK Warm Up Will Start at 9:30
09.18.25	Mykhalchyk	Crashed - Turn 5
09.19.21	Mykhalchyk	Medical Center
09.20.57	Bergman	Crashed - Turn 13
09.23.03		End Of Session

Fastest Laps Sequence

No.	Rider	Nat	Team	Bike	Local Time	Time	Gap	Avg
64	F. CARICASULO	ITA	Bardahl Evan Bros. Honda Racing	Honda CBR600RR	09:01'56.402	1'54.213		139,413
21	R. KRUMMENACHER	SUI	Kawasaki Puccetti Racing	Kawasaki ZX-6R	09:02'50.819	1'52.290	-1.923	141,801
64	F. CARICASULO	ITA	Bardahl Evan Bros. Honda Racing	Honda CBR600RR	09:03'42.609	1'46.207	-6.083	149,922
71	C. BERGMAN	SWE	CIA Landlord Insurance Honda	Honda CBR600RR	09:03'45.810	1'46.061	-0.146	150,129
66	N. TUULI	FIN	Kallio Racing	Yamaha YZF R6	09:03'54.640	1'44.755	-1.306	152,000
21	R. KRUMMENACHER	SUI	Kawasaki Puccetti Racing	Kawasaki ZX-6R	09:04'35.541	1'44.722	-0.033	152,048
66	N. TUULI	FIN	Kallio Racing	Yamaha YZF R6	09:05'39.002	1'44.362	-0.360	152,573
21	R. KRUMMENACHER	SUI	Kawasaki Puccetti Racing	Kawasaki ZX-6R	09:06'19.748	1'44.207	-0.155	152,800

These data/results cannot be reproduced, stored and/or transmitted in whole or in part by any manner of electronic, mechanical, photocopying, recording, broadcasting or otherwise now known or herein after developed without the previous express consent by the copyright owner, except for reproduction in daily press and regular printed publications on sale to the public within 60 days of the event related to those data/results and always provided that copyright symbol appears together as follows below.

© DORNA WSBK ORGANIZATION Srl 2016

Start	End	The results are provisional until the end of the time limit for protests and appeals
16/10/2016 08:59	09:23	and the completion of the technical checks.

FICR PERUGIA TIMING



Official Tyre Supplier



Official Timekeeper

Spanish Round, 14-15-16 October 2016

World Supersport - Best Sector & Speed Warm Up

Jerez 4.423 m

Best Lap

1	21 R. KRUMMENACHER	Kawasaki ZX-6R	1'44.207
2	66 N. TUULI	Yamaha YZF R6	1'44.303
3	1 K. SOFUOGLU	Kawasaki ZX-6R	1'44.588
4	77 K. RYDE	Kawasaki ZX-6R	1'44.898
5	86 A. BADOVINI	Honda CBR600RR	1'45.019
6	61 A. ZACCONE	Kawasaki ZX-6R	1'45.064
7	64 F. CARICASULO	Honda CBR600RR	1'45.082
8	111 K. SMITH	Honda CBR600RR	1'45.278
9	55 I. MYKHALCHYK	Kawasaki ZX-6R	1'45.290
10	2 P. JACOBSEN	Honda CBR600RR	1'45.399
11	44 R. ROLFO	MV Austa F3 675	1'45.445
12	81 L. STAPLEFORD	Triumph Daytona 675	1'45.454
13	71 C. BERGMAN	Honda CBR600RR	1'45.459
14	10 N. CALERO	Kawasaki ZX-6R	1'45.479
15	16 J. CLUZEL	MV Austa F3 675	1'45.556
16	87 L. ZANETTI	MV Austa F3 675	1'45.709
17	65 M. CANDUCCI	MV Austa F3 675	1'45.940
18	63 Z. KHAIRUDDIN	Kawasaki ZX-6R	1'45.949
19	80 X. PINSACH	Honda CBR600RR	1'45.979
20	47 A. BASSANI	Kawasaki ZX-6R	1'46.008
21	11 C. GAMARINO	Kawasaki ZX-6R	1'46.121
22	23 C. TANGRE	Suzuki GSX-R600	1'46.387
23	6 D. STIRPE	Kawasaki ZX-6R	1'46.516
24	69 O. JEZEK	Kawasaki ZX-6R	1'46.574
25	38 H. SOOMER	Yamaha YZF R6	1'46.822
26	83 L. EPIS	Kawasaki ZX-6R	1'46.845
27	78 H. OKUBO	Honda CBR600RR	1'46.963
28	12 C. GOBBI	Yamaha YZF R6	1'46.985
29	35 S. HILL	Honda CBR600RR	1'47.446
30	50 B. ORTT	Honda CBR600RR	1'48.962
31	20 D. LOUREIRO	Honda CBR600RR	1'49.050

Best Sector & Speed

1	2 P. JACOBSEN	Honda CBR600RR	250.6
2	47 A. BASSANI	Kawasaki ZX-6R	246.6
3	71 C. BERGMAN	Honda CBR600RR	246.0
4	81 L. STAPLEFORD	Triumph Daytona 675	245.5
5	80 X. PINSACH	Honda CBR600RR	245.5
6	21 R. KRUMMENACHER	Kawasaki ZX-6R	245.5
7	77 K. RYDE	Kawasaki ZX-6R	244.3
8	44 R. ROLFO	MV Austa F3 675	243.8
9	64 F. CARICASULO	Honda CBR600RR	243.8
10	11 C. GAMARINO	Kawasaki ZX-6R	243.2
11	69 O. JEZEK	Kawasaki ZX-6R	243.2
12	66 N. TUULI	Yamaha YZF R6	243.2
13	65 M. CANDUCCI	MV Austa F3 675	243.2
14	16 J. CLUZEL	MV Austa F3 675	242.7
15	86 A. BADOVINI	Honda CBR600RR	242.7
16	61 A. ZACCONE	Kawasaki ZX-6R	242.2
17	63 Z. KHAIRUDDIN	Kawasaki ZX-6R	242.2
18	83 L. EPIS	Kawasaki ZX-6R	242.2
19	78 H. OKUBO	Honda CBR600RR	242.2
20	6 D. STIRPE	Kawasaki ZX-6R	241.6
21	87 L. ZANETTI	MV Austa F3 675	241.6
22	10 N. CALERO	Kawasaki ZX-6R	241.1
23	38 H. SOOMER	Yamaha YZF R6	241.1
24	1 K. SOFUOGLU	Kawasaki ZX-6R	240.5
25	55 I. MYKHALCHYK	Kawasaki ZX-6R	239.5
26	111 K. SMITH	Honda CBR600RR	239.5
27	35 S. HILL	Honda CBR600RR	238.9
28	12 C. GOBBI	Yamaha YZF R6	238.9
29	50 B. ORTT	Honda CBR600RR	237.9
30	20 D. LOUREIRO	Honda CBR600RR	236.3
31	23 C. TANGRE	Suzuki GSX-R600	234.3

Seg. 1

1	21 R. KRUMMENACH	25.654
2	1 K. SOFUOGLU	25.842
3	66 N. TUULI	25.861
4	55 I. MYKHALCHYK	25.886
5	86 A. BADOVINI	25.897
6	77 K. RYDE	25.909
7	61 A. ZACCONE	25.931
8	16 J. CLUZEL	25.941
9	71 C. BERGMAN	25.958
10	64 F. CARICASULO	25.979
11	44 R. ROLFO	25.988
12	2 P. JACOBSEN	25.989
13	111 K. SMITH	26.022
14	10 N. CALERO	26.103
15	11 C. GAMARINO	26.141
16	87 L. ZANETTI	26.186
17	47 A. BASSANI	26.192
18	80 X. PINSACH	26.204
19	81 L. STAPLEFORD	26.236
20	38 H. SOOMER	26.300
21	63 Z. KHAIRUDDIN	26.304
22	23 C. TANGRE	26.314
23	65 M. CANDUCCI	26.380
24	69 O. JEZEK	26.392
25	6 D. STIRPE	26.393
26	12 C. GOBBI	26.452
27	35 S. HILL	26.459
28	83 L. EPIS	26.467
29	78 H. OKUBO	26.531
30	20 D. LOUREIRO	26.733
31	50 B. ORTT	27.013

Seg. 2

1	21 R. KRUMMENACH	15.394
2	71 C. BERGMAN	15.417
3	81 L. STAPLEFORD	15.438
4	80 X. PINSACH	15.454
5	66 N. TUULI	15.472
6	77 K. RYDE	15.475
7	86 A. BADOVINI	15.501
8	69 O. JEZEK	15.521
9	47 A. BASSANI	15.541
10	16 J. CLUZEL	15.544
11	61 A. ZACCONE	15.558
12	44 R. ROLFO	15.559
13	1 K. SOFUOGLU	15.560
14	2 P. JACOBSEN	15.562
15	64 F. CARICASULO	15.571
16	111 K. SMITH	15.575
17	65 M. CANDUCCI	15.622
18	10 N. CALERO	15.640
19	6 D. STIRPE	15.647
20	11 C. GAMARINO	15.650
21	55 I. MYKHALCHYK	15.655
22	63 Z. KHAIRUDDIN	15.674
23	87 L. ZANETTI	15.715
24	78 H. OKUBO	15.764
25	12 C. GOBBI	15.772
26	23 C. TANGRE	15.773
27	35 S. HILL	15.785
28	38 H. SOOMER	15.786
29	83 L. EPIS	15.830
30	20 D. LOUREIRO	16.059
31	50 B. ORTT	16.096

Seg. 3

1	1 K. SOFUOGLU	30.754
2	21 R. KRUMMENACH	30.771
3	66 N. TUULI	30.870
4	64 F. CARICASULO	30.916
5	86 A. BADOVINI	30.976
6	77 K. RYDE	31.015
7	61 A. ZACCONE	31.019
8	10 N. CALERO	31.035
9	55 I. MYKHALCHYK	31.073
10	111 K. SMITH	31.110
11	87 L. ZANETTI	31.136
12	44 R. ROLFO	31.166
13	16 J. CLUZEL	31.199
14	71 C. BERGMAN	31.212
15	63 Z. KHAIRUDDIN	31.244
16	2 P. JACOBSEN	31.263
17	65 M. CANDUCCI	31.269
18	81 L. STAPLEFORD	31.320
19	23 C. TANGRE	31.410
20	80 X. PINSACH	31.482
21	47 A. BASSANI	31.501
22	11 C. GAMARINO	31.509
23	69 O. JEZEK	31.568
24	38 H. SOOMER	31.583
25	12 C. GOBBI	31.613
26	83 L. EPIS	31.728
27	78 H. OKUBO	31.747
28	6 D. STIRPE	31.748
29	35 S. HILL	31.787
30	50 B. ORTT	32.189
31	20 D. LOUREIRO	32.233

Seg. 4

1	66 N. TUULI	31.966
2	21 R. KRUMMENACH	32.154
3	1 K. SOFUOGLU	32.201
4	86 A. BADOVINI	32.221
5	2 P. JACOBSEN	32.298
6	77 K. RYDE	32.305
7	81 L. STAPLEFORD	32.373
8	71 C. BERGMAN	32.381
9	64 F. CARICASULO	32.401
10	55 I. MYKHALCHYK	32.401
11	61 A. ZACCONE	32.425
12	111 K. SMITH	32.518
13	63 Z. KHAIRUDDIN	32.540
14	16 J. CLUZEL	32.547
15	10 N. CALERO	32.562
16	87 L. ZANETTI	32.563
17	44 R. ROLFO	32.587
18	65 M. CANDUCCI	32.636
19	80 X. PINSACH	32.662
20	47 A. BASSANI	32.691
21	6 D. STIRPE	32.692
22	69 O. JEZEK	32.709
23	83 L. EPIS	32.723
24	11 C. GAMARINO	32.745
25	38 H. SOOMER	32.889
26	23 C. TANGRE	32.890
27	78 H. OKUBO	32.901
28	12 C. GOBBI	32.934
29	35 S. HILL	33.119
30	50 B. ORTT	33.390
31	20 D. LOUREIRO	33.575

16/10/2016

These data/results cannot be reproduced, stored and/or transmitted in whole or in part by any manner of electronic, mechanical, photocopying, recording, broadcasting or otherwise now known or herein after developed without the previous express consent by the copyright owner, except for reproduction in daily press and regular printed publications on sale to the public within 60 days of the event related to those data/results and always provided that copyright symbol appears together as follows below.

© DORNA WSBK ORGANIZATION Srl 2016

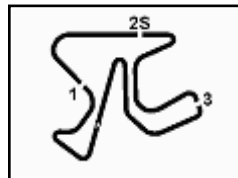
FICR PERUGIA TIMING



Official Tyre Supplier



Official Timekeeper



Spanish Round, 14-15-16 October 2016

World Supersport - Ideal Times Warm Up

Jerez 4.423 m

1 / 2

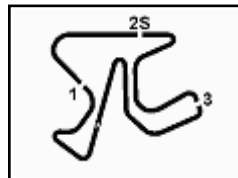
No.	Rider	Nat	Bike	Seg. 1	Seg. 2	Seg. 3	Seg. 4	Ideal Time		
				Diff. 1	Diff. 2	Diff. 3	Diff. 4	Best Lap	Pos.	Diff.
1	21 R. KRUMMENACHER	SUI	Kawasaki ZX-6R	25.654 0.145	15.394 0.056	30.771	32.154 0.033	1'43.973 1'44.207	1	0.234
2	66 N. TUULI	FIN	Yamaha YZF R6	25.861 0.011	15.472 0.009	30.870 0.114	31.966	1'44.169 1'44.303	2	0.134
3	1 K. SOFUOGLU	TUR	Kawasaki ZX-6R	25.842	15.560	30.754	32.201 0.231	1'44.357 1'44.588	3	0.231
4	86 A. BADOVINI	ITA	Honda CBR600RR	25.897 0.258	15.501 0.131	30.976	32.221 0.035	1'44.595 1'45.019	5	0.424
5	77 K. RYDE	GBR	Kawasaki ZX-6R	25.909 0.137	15.475 0.057	31.015	32.305	1'44.704 1'44.898	4	0.194
6	64 F. CARICASULO	ITA	Honda CBR600RR	25.979	15.571 0.152	30.916	32.401 0.063	1'44.867 1'45.082	7	0.215
7	61 A. ZACCONE	ITA	Kawasaki ZX-6R	25.931	15.558 0.048	31.019	32.425 0.083	1'44.933 1'45.064	6	0.131
8	71 C. BERGMAN	SWE	Honda CBR600RR	25.958 0.172	15.417 0.120	31.212 0.082	32.381 0.117	1'44.968 1'45.459	13	0.491
9	55 I. MYKHALCHYK	UKR	Kawasaki ZX-6R	25.886 0.248	15.655 0.027	31.073	32.401	1'45.015 1'45.290	9	0.275
10	2 P. JACOBSEN	USA	Honda CBR600RR	25.989	15.562 0.075	31.263 0.091	32.298 0.121	1'45.112 1'45.399	10	0.287
11	111 K. SMITH	GBR	Honda CBR600RR	26.022	15.575 0.022	31.110	32.518 0.031	1'45.225 1'45.278	8	0.053
12	16 J. CLUZEL	FRA	MV Agusta F3 675	25.941 0.152	15.544 0.160	31.199	32.547 0.013	1'45.231 1'45.556	15	0.325
13	44 R. ROLFO	ITA	MV Agusta F3 675	25.988	15.559 0.074	31.166 0.071	32.587	1'45.300 1'45.445	11	0.145
14	10 N. CALERO	ESP	Kawasaki ZX-6R	26.103 0.082	15.640	31.035	32.562 0.057	1'45.340 1'45.479	14	0.139
15	81 L. STAPLEFORD	GBR	Triumph Daytona 675	26.236	15.438 0.068	31.320 0.019	32.373	1'45.367 1'45.454	12	0.087
16	87 L. ZANETTI	ITA	MV Agusta F3 675	26.186	15.715 0.109	31.136	32.563	1'45.600 1'45.709	16	0.109
17	63 Z. KHAIRUDDIN	MAS	Kawasaki ZX-6R	26.304 0.012	15.674	31.244 0.126	32.540 0.049	1'45.762 1'45.949	18	0.187
18	80 X. PINSACH	ESP	Honda CBR600RR	26.204	15.454	31.482 0.032	32.662 0.145	1'45.802 1'45.979	19	0.177
19	65 M. CANDUCCI	ITA	MV Agusta F3 675	26.380 0.033	15.622	31.269	32.636	1'45.907 1'45.940	17	0.033
20	47 A. BASSANI	ITA	Kawasaki ZX-6R	26.192 0.009	15.541	31.501	32.691 0.074	1'45.925 1'46.008	20	0.083
21	11 C. GAMARINO	ITA	Kawasaki ZX-6R	26.141	15.650	31.509	32.745 0.076	1'46.045 1'46.121	21	0.076
22	69 O. JEZEK	CZE	Kawasaki ZX-6R	26.392 0.182	15.521 0.014	31.568	32.709 0.188	1'46.190 1'46.574	24	0.384
23	23 C. TANGRE	FRA	Suzuki GSX-R600	26.314	15.773	31.410	32.890	1'46.387 1'46.387	22	0.000
24	6 D. STIRPE	ITA	Kawasaki ZX-6R	26.393	15.647	31.748 0.036	32.692	1'46.480 1'46.516	23	0.036
25	38 H. SOOMER	EST	Yamaha YZF R6	26.300	15.786 0.226	31.583	32.889 0.038	1'46.558 1'46.822	25	0.264
26	83 L. EPIS	AUS	Kawasaki ZX-6R	26.467	15.830 0.097	31.728	32.723	1'46.748 1'46.845	26	0.097
27	12 C. GOBBI	ITA	Yamaha YZF R6	26.452	15.772 0.071	31.613 0.143	32.934	1'46.771 1'46.985	28	0.214
28	78 H. OKUBO	JPN	Honda CBR600RR	26.531 0.020	15.764	31.747	32.901	1'46.943 1'46.963	27	0.020
29	35 S. HILL	GBR	Honda CBR600RR	26.459	15.785 0.206	31.787	33.119 0.090	1'47.150 1'47.446	29	0.296
30	20 D. LOUREIRO	RSA	Honda CBR600RR	26.733 0.391	16.059 0.059	32.233	33.575	1'48.600 1'49.050	31	0.450
31	50 B. ORTT	CAN	Honda CBR600RR	27.013	16.096 0.046	32.189	33.390 0.228	1'48.688 1'48.962	30	0.274
Overall Ideal Time				25.654	15.394	30.754	31.966	1'43.768		

16/10/2016

These data/results cannot be reproduced, stored and/or transmitted in whole or in part by any manner of electronic, mechanical, photocopying, recording, broadcasting or otherwise now known or herein after developed without the previous express consent by the copyright owner, except for reproduction in daily press and regular printed publications on sale to the public within 60 days of the event related to those data/results and always provided that copyright symbol appears together as follows below.
© DORNA WSBK ORGANIZATION Srl 2016

FICR PERUGIA TIMING





Jerez 4.423 m

2 / 2

Spanish Round, 14-15-16 October 2016

World Supersport - Ideal Times Warm Up

No. Rider	Nat	Bike	Seg. 1	Seg. 2	Seg. 3	Seg. 4	Ideal Time		
			Diff. 1	Diff. 2	Diff. 3	Diff. 4	Best Lap	Pos.	Diff.

16/10/2016

These data/results cannot be reproduced, stored and/or transmitted in whole or in part by any manner of electronic, mechanical, photocopying, recording, broadcasting or otherwise now known or herein after developed without the previous express consent by the copyright owner, except for reproduction in daily press and regular printed publications on sale to the public within 60 days of the event related to those data/results and always provided that copyright symbol appears together as follows below.
© DORNA WSBK ORGANIZATION Srl 2016

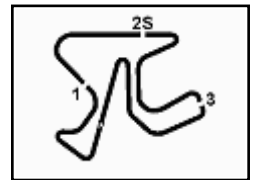
FKR PERUGIA TIMING



Official Tyre Supplier



Official Timekeeper



Jerez 4.423 m

3 / 3

Spanish Round, 14-15-16 October 2016

World Supersport - Chronological Analysis Warm Up

25° 38 H. SOOMER (1'46.822)

Lap	Seq. 1	Seq. 2	Seq. 3	Seq. 4	Lap Time	km/h	Local Time
							9:00'04.603
1	32.393	16.584	33.728	34.121	1'56.826 P	241.1	9:02'01.429
2	26.740	15.849	31.676	33.141	1'47.406	237.9	9:03'48.835
3	26.796	15.833	32.295	33.182	1'48.106	238.9	9:05'36.941
4	26.300	16.012	31.583	32.927	1'46.822	233.3	9:07'23.763
5	26.340	15.836	31.756	33.134	1'47.066	238.9	9:09'10.829
6	26.578	15.803	31.638	33.063	1'47.082 C	241.1	9:10'57.911
7	30.655	17.483	34.484	4'58.694	6'21.316 P	189.5	9:17'19.227
8	30.738	16.234	32.838	33.019	1'52.829 P	237.9	9:19'12.056
9	26.396	15.866	31.810	32.954	1'47.026	238.4	9:20'59.082
10	26.624	15.786	31.588	32.889	1'46.887	238.9	9:22'45.969

26° 83 L. EPIS (1'46.845)

Lap	Seq. 1	Seq. 2	Seq. 3	Seq. 4	Lap Time	km/h	Local Time
							9:00'02.144
1	32.505	16.794	33.273	34.012	1'56.584 P	231.3	9:01'58.728
2	27.216	15.929	32.731	33.097	1'48.973	237.9	9:03'47.701
3	26.825	15.833	31.815	33.139	1'47.612	236.3	9:05'35.313
4	26.566	16.036	32.046	32.861	1'47.509	237.9	9:07'22.822
5	26.467	15.927	31.728	32.723	1'46.845	237.9	9:09'09.667
6	26.858	15.937	32.101	33.492	1'48.388 C	237.4	9:10'58.055
7	34.618	18.185	36.068	4'49.942	6'18.813 P	182.1	9:17'16.868
8	31.009	16.388	32.289	33.733	1'53.419 P	234.3	9:19'10.287
9	26.625	15.866	31.896	33.232	1'47.619	242.2	9:20'57.906
10	26.721	15.830	32.148	33.136	1'47.835	237.9	9:22'45.741

27° 78 H. OKUBO (1'46.963)

Lap	Seq. 1	Seq. 2	Seq. 3	Seq. 4	Lap Time	km/h	Local Time
							9:00'03.377
1	33.290	16.722	34.171	34.318	1'58.501 P	238.4	9:02'01.878
2	27.069	16.008	32.407	33.176	1'48.660	237.4	9:03'50.538
3	27.035	15.813	32.267	33.161	1'48.276	242.2	9:05'38.814
4	26.610	15.813	31.753	33.043	1'47.219	240.0	9:07'26.033
5	26.531	16.074	31.937	33.351	1'47.893	232.8	9:09'13.926
6	26.680	15.903	36.059	34.715	1'53.357 C	237.9	9:11'07.283
7	34.094	20.953	42.899	4'26.566	6'04.512 P	160.7	9:17'11.795
8	30.401	16.236	32.006	33.027	1'51.670 P	241.1	9:19'03.465
9	26.551	15.764	31.747	32.901	1'46.963	238.9	9:20'50.428
10	26.576	16.054	31.901	33.180	1'47.711	237.9	9:22'38.139

28° 12 C. GOBBI (1'46.985)

Lap	Seq. 1	Seq. 2	Seq. 3	Seq. 4	Lap Time	km/h	Local Time
							9:00'20.491
1	38.109	17.231	34.133	33.696	2'03.169 P	230.3	9:02'23.660
2	27.023	16.379	32.292	33.105	1'48.799	225.0	9:04'12.459
3	26.623	15.772	31.613	33.061	1'47.069	238.9	9:05'59.528
4	26.452	15.843	31.756	32.934	1'46.985	237.9	9:07'46.513
5	31.031	15.973	31.926	10'53.965	12'12.895 P	238.4	9:19'59.408
6	34.832	16.448	33.352	33.860	1'58.492 P	233.8	9:21'57.900

29° 35 S. HILL (1'47.446)

Lap	Seq. 1	Seq. 2	Seq. 3	Seq. 4	Lap Time	km/h	Local Time
							9:00'29.953
1	32.888	17.314	33.037	34.806	1'58.045 P	230.8	9:02'27.998
2	27.146	15.900	32.273	33.354	1'48.673	238.9	9:04'16.671
3	26.739	15.869	31.787	33.123	1'47.518	236.3	9:06'04.189
4	30.916	15.964	32.205	33.365	1'52.450	236.8	9:07'56.639
5	26.494	15.785	32.610	39.772	1'54.661	236.8	9:09'51.300
6	26.585	21.816	34.751	6'17.145	7'40.297 P	220.9	9:17'31.597
7	30.183	21.829	33.797	34.218	2'00.027 P	194.2	9:19'31.624
8	26.459	15.991	31.877	33.119	1'47.446	235.3	9:21'19.070

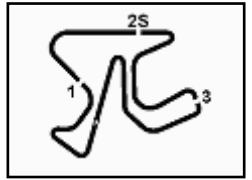
30° 50 B. ORTT (1'48.962)

Lap	Seq. 1	Seq. 2	Seq. 3	Seq. 4	Lap Time	km/h	Local Time
							9:00'20.115
1	41.790	18.163	37.400	35.257	2'12.610 P	226.4	9:02'32.725
2	27.321	16.519	33.165	33.872	1'50.877	237.9	9:04'23.602
3	27.222	16.289	32.189	33.444	1'49.144	235.3	9:06'12.746
4	27.251	16.113	33.921	1'41.806	2'59.091 P	235.8	9:09'11.837
5	35.410	16.258	32.399	34.494	1'58.561 C	233.8	9:11'10.398

P = Pits In/Out - C = Lap-Time Cancelled

These data/results cannot be reproduced, stored and/or transmitted in whole or in part by any manner of electronic, mechanical, photocopying, recording, broadcasting or otherwise now known or herein after developed without the previous express consent by the copyright owner, except for reproduction in daily press and regular printed publications on sale to the public within 60 days of the event related to those data/results and always provided that copyright symbol appears together as follows below.

© DORNA WSBK ORGANIZATION Srl 2016

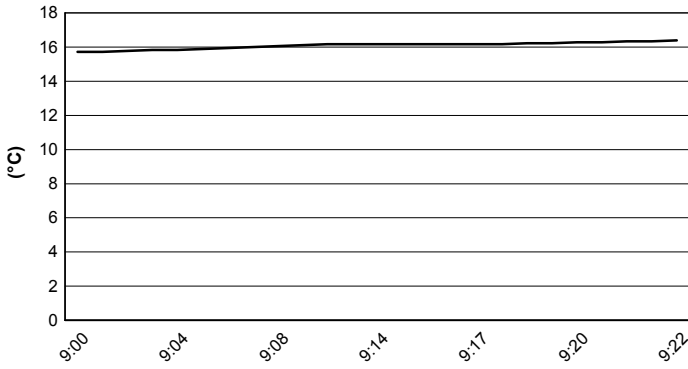


Jerez 4.423 m

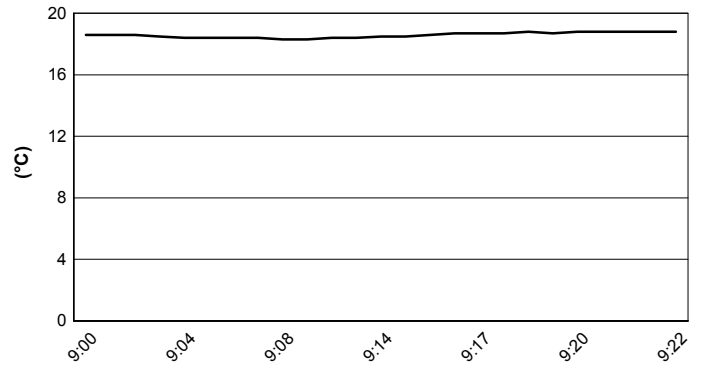
Spanish Round, 14-15-16 October 2016
World Supersport - Weather Report Warm Up

Session started 8:59 Session ended 9:23

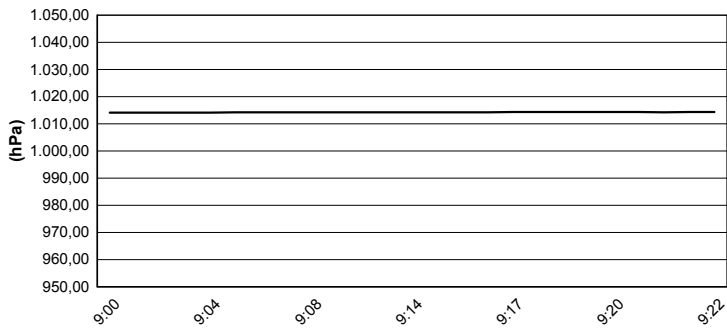
Air Temperature



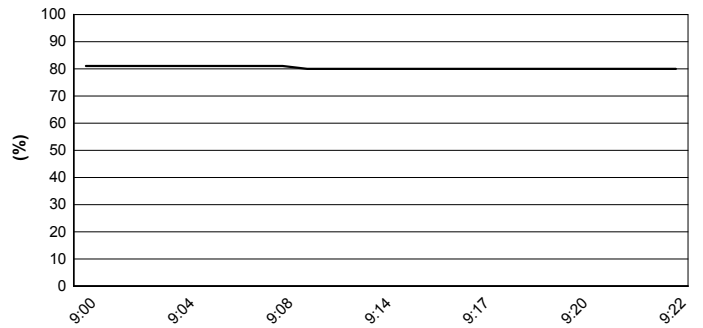
Track Temperature



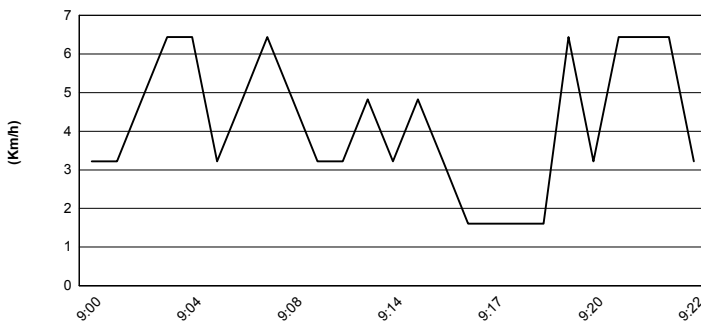
Air Pressure



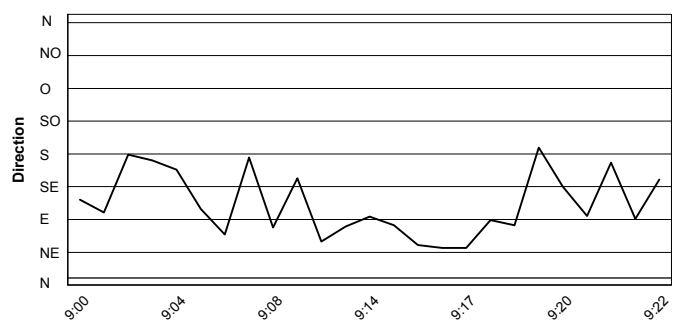
Humidity



Wind Speed

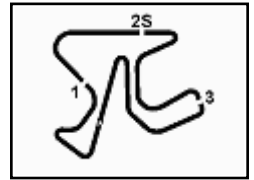


Wind Direction



These data/results cannot be reproduced, stored and/or transmitted in whole or in part by any manner of electronic, mechanical, photocopying, recording, broadcasting or otherwise now known or herein after developed without the previous express consent by the copyright owner, except for reproduction in daily press and regular printed publications on sale to the public within 60 days of the event related to those data/results and always provided that copyright symbol appears together as follows below.
© DORNA WSBK ORGANIZATION Srl 2016





Jerez 4.423 m

Spanish Round, 14-15-16 October 2016

World Supersport - Starting Grid

19 Laps x 4,423 km = 84,037 km

1	1 SOFUOGLU K. Kawasaki 1'42.969 SP2	2	21 KRUMMENACHER R. Kawasaki 1'43.311 SP2	3	16 CLUZEL J. MV Agusta 1'43.996 SP2
2	66 TUULI N. Yamaha 1'44.128 SP2	4	111 SMITH K. Honda 1'44.225 SP2	5	61 ZACCONE A. Kawasaki 1'44.350 SP2
3	2 JACOBSEN P. Honda 1'44.549 SP2	6	64 CARICASULO F. Honda 1'44.590 SP2	7	55 MYKHALCHYK I. Kawasaki 1'44.729 SP2
4	47 BASSANI A. Kawasaki 1'44.745 SP2	8	63 KHAIRUDDIN Z. Kawasaki 1'45.896 SP2	9	86 BADOVINI A. Honda 1'44.434 SP1
5	77 RYDE K. Kawasaki 1'44.508 SP1	10	10 CALERO N. Kawasaki 1'44.678 SP1	11	81 STAPLEFORD L. Triumph 1'44.877 SP1
6	80 PINSACH X. Honda 1'44.877 SP1	12	38 SOOMER H. Yamaha 1'44.920 SP1	13	11 GAMARINO C. Kawasaki 1'45.085 SP1
7	87 ZANETTI L. MV Agusta 1'45.089 SP1	14	71 BERGMAN C. Honda 1'45.097 SP1	14	6 STIRPE D. Kawasaki 1'45.170 SP1
8	12 GOBBI C. Yamaha 1'45.340 SP1	15	65 CANDUCCI M. MV Agusta 1'45.560 SP1	15	69 JEZEK O. Kawasaki 1'45.882 SP1
9	83 EPIS L. Kawasaki 1'45.933 SP1	16	78 OKUBO H. Honda 1'46.492 SP1	16	23 TANGRE C. Suzuki 1'46.499 SP1
10	35 HILL S. Honda 1'46.610 SP1	17	50 ORTT B. Honda 1'47.751 SP1	17	20 LOUREIRO D. Honda 1'47.759 SP1
11	44 ROLFO R. MV Agusta 1'45.496 SP1	18			

N. 44 (Rolfo R.) will start from the pit lane as per Art. 1.21.23

Jury President

..... Race Director

These data/results cannot be reproduced, stored and/or transmitted in whole or in part by any manner of electronic, mechanical, photocopying, recording, broadcasting or otherwise now known or herein after developed without the previous express consent by the copyright owner, except for reproduction in daily press and regular printed publications on sale to the public within 60 days of the event related to those data/results and always provided that copyright symbol appears together as follows below.

© DORNA WSBK ORGANIZATION Srl 2016

