

## French Round, 30 September 1-2 October 2016

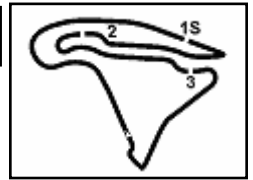
### World Supersport - Free Practices Combined Results

| No. | Rider                     | Nat | Team                            | Bike                | Class | FP1             | FP2             | Time            | Gap   | Rel.  | Avg     | Laps |
|-----|---------------------------|-----|---------------------------------|---------------------|-------|-----------------|-----------------|-----------------|-------|-------|---------|------|
| 1   | <b>1 K. SOFUOGLU</b>      | TUR | Kawasaki Puccetti Racing        | Kawasaki ZX-6R      |       | 1'41.673        | <b>1'41.507</b> | <b>1'41.507</b> |       |       | 156,438 | 49   |
| 2   | <b>21 R. KRUMMENACHER</b> | SUI | Kawasaki Puccetti Racing        | Kawasaki ZX-6R      |       | 1'42.070        | <b>1'41.889</b> | <b>1'41.889</b> | 0.382 | 0.382 | 155,852 | 48   |
| 3   | <b>55 I. MIKHALCHIK</b>   | UKR | DS Junior Team                  | Kawasaki ZX-6R      | ESS   | 1'42.841        | <b>1'41.916</b> | <b>1'41.916</b> | 0.409 | 0.027 | 155,811 | 47   |
| 4   | <b>86 A. BADOVINI</b>     | ITA | Gemar Balloons - Team Lorini    | Honda CBR600RR      |       | 1'43.249        | <b>1'41.923</b> | <b>1'41.923</b> | 0.416 | 0.007 | 155,800 | 28   |
| 5   | <b>47 A. BASSANI</b>      | ITA | San Carlo Team Italia           | Kawasaki ZX-6R      | ESS   | 1'42.851        | <b>1'41.948</b> | <b>1'41.948</b> | 0.441 | 0.025 | 155,762 | 49   |
| 6   | <b>66 N. TUULI</b>        | FIN | Kallio Racing                   | Yamaha YZF R6       |       | 1'42.652        | <b>1'42.044</b> | <b>1'42.044</b> | 0.537 | 0.096 | 155,615 | 43   |
| 7   | <b>16 J. CLUZEL</b>       | FRA | MV Agusta Reparto Corse         | MV Agusta F3 675    |       | 1'42.540        | <b>1'42.200</b> | <b>1'42.200</b> | 0.693 | 0.156 | 155,378 | 37   |
| 8   | <b>11 C. GAMARINO</b>     | ITA | Team GoEleven                   | Kawasaki ZX-6R      |       | 1'42.792        | <b>1'42.286</b> | <b>1'42.286</b> | 0.779 | 0.086 | 155,247 | 45   |
| 9   | <b>25 A. BALDOLINI</b>    | ITA | Race Department ATK#25          | MV Agusta F3 675    |       | 1'43.125        | <b>1'42.299</b> | <b>1'42.299</b> | 0.792 | 0.013 | 155,227 | 46   |
| 10  | <b>61 A. ZACCONE</b>      | ITA | San Carlo Team Italia           | Kawasaki ZX-6R      | ESS   | 1'42.762        | <b>1'42.370</b> | <b>1'42.370</b> | 0.863 | 0.071 | 155,120 | 37   |
| 11  | <b>2 P. JACOBSEN</b>      | USA | Honda World Supersport Team     | Honda CBR600RR      |       | 1'42.797        | <b>1'42.508</b> | <b>1'42.508</b> | 1.001 | 0.138 | 154,911 | 44   |
| 12  | <b>87 L. ZANETTI</b>      | ITA | MV Agusta Reparto Corse         | MV Agusta F3 675    |       | 1'44.394        | <b>1'42.533</b> | <b>1'42.533</b> | 1.026 | 0.025 | 154,873 | 38   |
| 13  | <b>64 F. CARICASULO</b>   | ITA | Bardahl Evan Bros. Honda Racing | Honda CBR600RR      |       | 1'43.156        | <b>1'42.554</b> | <b>1'42.554</b> | 1.047 | 0.021 | 154,841 | 45   |
| 14  | <b>78 H. OKUBO</b>        | JPN | CIA Landlord Insurance Honda    | Honda CBR600RR      |       | 1'43.264        | <b>1'42.562</b> | <b>1'42.562</b> | 1.055 | 0.008 | 154,829 | 47   |
| 15  | <b>71 C. BERGMAN</b>      | SWE | CIA Landlord Insurance Honda    | Honda CBR600RR      |       | 1'43.303        | <b>1'42.599</b> | <b>1'42.599</b> | 1.092 | 0.037 | 154,773 | 50   |
| 16  | <b>65 M. CANDOLINI</b>    | ITA | GRT Racing Team                 | MV Agusta F3 675    |       | 1'44.529        | <b>1'42.665</b> | <b>1'42.665</b> | 1.158 | 0.066 | 154,674 | 43   |
| 17  | <b>4 G. REA</b>           | GBR | GRT Racing Team                 | MV Agusta F3 675    |       | 1'42.995        | <b>1'42.974</b> | <b>1'42.974</b> | 1.467 | 0.309 | 154,210 | 42   |
| 18  | <b>77 K. RYDE</b>         | GBR | Schmidt Racing                  | Kawasaki ZX-6R      |       | 1'44.167        | <b>1'43.013</b> | <b>1'43.013</b> | 1.506 | 0.039 | 154,151 | 46   |
| 19  | <b>81 L. STAPLEFORD</b>   | GBR | Profile Racing                  | Triumph Daytona 675 |       | 1'44.415        | <b>1'43.038</b> | <b>1'43.038</b> | 1.531 | 0.025 | 154,114 | 53   |
| 20  | <b>111 K. SMITH</b>       | GBR | CIA Landlord Insurance Honda    | Honda CBR600RR      |       | 1'43.613        | <b>1'43.295</b> | <b>1'43.295</b> | 1.788 | 0.257 | 153,731 | 51   |
| 21  | <b>26 G. ANTIGA</b>       | FRA | MTM / HS Kawasaki               | Kawasaki ZX-6R      | ESS   | 1'44.449        | <b>1'43.340</b> | <b>1'43.340</b> | 1.833 | 0.045 | 153,664 | 51   |
| 22  | <b>23 C. TANGRE</b>       | FRA | Team Yohann Moto Sport          | Suzuki GSX-R600     | ESS   | 1'44.159        | <b>1'43.363</b> | <b>1'43.363</b> | 1.856 | 0.023 | 153,629 | 49   |
| 23  | <b>44 R. ROLFO</b>        | ITA | Team Factory Vamag              | MV Agusta F3 675    |       | 1'44.000        | <b>1'43.415</b> | <b>1'43.415</b> | 1.908 | 0.052 | 153,552 | 44   |
| 24  | <b>63 Z. KHAIRUDDIN</b>   | MAS | Orelac Racing VerdNatura        | Kawasaki ZX-6R      |       | 1'44.563        | <b>1'43.432</b> | <b>1'43.432</b> | 1.925 | 0.017 | 153,527 | 45   |
| 25  | <b>69 O. JEZEK</b>        | CZE | Team GoEleven                   | Kawasaki ZX-6R      |       | <b>1'43.504</b> | 1'44.072        | <b>1'43.504</b> | 1.997 | 0.072 | 153,420 | 42   |
| 26  | <b>80 X. PINSACH</b>      | ESP | Gemar Balloons - Team Lorini    | Honda CBR600RR      |       | 1'43.797        | <b>1'43.533</b> | <b>1'43.533</b> | 2.026 | 0.029 | 153,377 | 51   |
| 27  | <b>38 H. SOOMER</b>       | EST | Kallio Racing                   | Yamaha YZF R6       |       | <b>1'43.600</b> | 1'44.478        | <b>1'43.600</b> | 2.093 | 0.067 | 153,278 | 38   |
| 28  | <b>10 N. CALERO</b>       | ESP | Orelac Racing VerdNatura        | Kawasaki ZX-6R      |       | 1'44.294        | <b>1'43.680</b> | <b>1'43.680</b> | 2.173 | 0.080 | 153,160 | 50   |
| 29  | <b>6 D. STIRPE</b>        | ITA | Scuderia Maranga Racing         | Kawasaki ZX-6R      | ESS   | <b>1'44.112</b> | 1'44.136        | <b>1'44.112</b> | 2.605 | 0.432 | 152,524 | 49   |
| 30  | <b>12 C. GOBBI</b>        | ITA | VFT Racing                      | Yamaha YZF R6       | ESS   | 1'44.778        | <b>1'44.395</b> | <b>1'44.395</b> | 2.888 | 0.283 | 152,111 | 37   |
| 31  | <b>183 P. POLESSO</b>     | FRA | TCP Racing                      | Yamaha YZF R6       |       | 1'44.951        | <b>1'44.597</b> | <b>1'44.597</b> | 3.090 | 0.202 | 151,817 | 50   |
| 32  | <b>83 L. EPIS</b>         | AUS | Response RE Racing              | Kawasaki ZX-6R      |       | 1'45.396        | <b>1'44.765</b> | <b>1'44.765</b> | 3.258 | 0.168 | 151,574 | 42   |
| 33  | <b>58 C. STOLL</b>        | FRA | CS Race Team                    | Triumph Daytona 675 |       | 1'46.087        | <b>1'44.846</b> | <b>1'44.846</b> | 3.339 | 0.081 | 151,456 | 30   |
| 34  | <b>35 S. HILL</b>         | GBR | CIA Landlord Insurance Honda    | Honda CBR600RR      |       | 1'46.538        | <b>1'45.265</b> | <b>1'45.265</b> | 3.758 | 0.419 | 150,854 | 51   |
| 35  | <b>20 D. LOUREIRO</b>     | RSA | WILSport Racedays Honda         | Honda CBR600RR      | ESS   | 1'45.784        | <b>1'45.272</b> | <b>1'45.272</b> | 3.765 | 0.007 | 150,844 | 51   |
| 36  | <b>42 S. FROSSARD</b>     | SUI | Team CMS                        | Yamaha YZF R6       |       | 1'45.820        | <b>1'45.342</b> | <b>1'45.342</b> | 3.835 | 0.070 | 150,743 | 43   |
| 37  | <b>123 F. PERON</b>       | FRA | Team 23 FELIX LE PI-LOT by ASPi | Yamaha YZF R6       |       | 1'46.559        | <b>1'45.922</b> | <b>1'45.922</b> | 4.415 | 0.580 | 149,918 | 41   |
| 38  | <b>50 B. ORTT</b>         | CAN | WILSport Racedays Honda         | Honda CBR600RR      | ESS   | 1'47.886        | <b>1'45.951</b> | <b>1'45.951</b> | 4.444 | 0.029 | 149,877 | 35   |
| 39  | <b>7 A. LICCIARDI</b>     | BEL | R2 MotorRacing Team             | Honda CBR600RR      | ESS   | <b>1'51.347</b> | 1'52.650        | <b>1'51.347</b> | 9.840 | 5.396 | 142,614 | 30   |

These data/results cannot be reproduced, stored and/or transmitted in whole or in part by any manner of electronic, mechanical, photocopying, recording, broadcasting or otherwise now known or herein after developed without the previous express consent by the copyright owner, except for reproduction in daily press and regular printed publications on sale to the public within 60 days of the event related to those data/results and always provided that copyright symbol appears together as follows below.

© DORNA WSBK ORGANIZATION Srl 2016

30/09/2016



## French Round, 30 September 1-2 October 2016

### World Supersport - Results Free Practice 2nd Session

| No.                       | Rider              | Nat | Team                            | Bike                | Class | Time            | Gap    | Rel.  | Laps | Speed   |              |
|---------------------------|--------------------|-----|---------------------------------|---------------------|-------|-----------------|--------|-------|------|---------|--------------|
|                           |                    |     |                                 |                     |       |                 |        |       |      | Avg     | Max          |
| 1                         | 1 K. SOFUOGLU      | TUR | Kawasaki Puccetti Racing        | Kawasaki ZX-6R      |       | <b>1'41.507</b> |        |       | 24   | 156,438 | <b>259,6</b> |
| 2                         | 21 R. KRUMMENACHER | SUI | Kawasaki Puccetti Racing        | Kawasaki ZX-6R      |       | <b>1'41.889</b> | 0.382  | 0.382 | 24   | 155,852 | <b>260,2</b> |
| 3                         | 55 I. MIKHALCHIK   | UKR | DS Junior Team                  | Kawasaki ZX-6R      | ESS   | <b>1'41.916</b> | 0.409  | 0.027 | 23   | 155,811 | <b>259,0</b> |
| 4                         | 86 A. BADOVINI     | ITA | Gemar Balloons - Team Lorini    | Honda CBR600RR      |       | <b>1'41.923</b> | 0.416  | 0.007 | 18   | 155,800 | <b>255,9</b> |
| 5                         | 47 A. BASSANI      | ITA | San Carlo Team Italia           | Kawasaki ZX-6R      | ESS   | <b>1'41.948</b> | 0.441  | 0.025 | 25   | 155,762 | <b>257,1</b> |
| 6                         | 66 N. TUULI        | FIN | Kallio Racing                   | Yamaha YZF R6       |       | <b>1'42.044</b> | 0.537  | 0.096 | 25   | 155,615 | <b>260,9</b> |
| 7                         | 16 J. CLUZEL       | FRA | MV Agusta Reparto Corse         | MV Agusta F3 675    |       | <b>1'42.200</b> | 0.693  | 0.156 | 18   | 155,378 | <b>256,5</b> |
| 8                         | 11 C. GAMARINO     | ITA | Team GoEleven                   | Kawasaki ZX-6R      |       | <b>1'42.286</b> | 0.779  | 0.086 | 21   | 155,247 | <b>255,9</b> |
| 9                         | 25 A. BALDOLINI    | ITA | Race Department ATK#25          | MV Agusta F3 675    |       | <b>1'42.299</b> | 0.792  | 0.013 | 21   | 155,227 | <b>257,1</b> |
| 10                        | 61 A. ZACCONE      | ITA | San Carlo Team Italia           | Kawasaki ZX-6R      | ESS   | <b>1'42.370</b> | 0.863  | 0.071 | 15   | 155,120 | <b>254,1</b> |
| 11                        | 2 P. JACOBSEN      | USA | Honda World Supersport Team     | Honda CBR600RR      |       | <b>1'42.508</b> | 1.001  | 0.138 | 22   | 154,911 | <b>260,2</b> |
| 12                        | 87 L. ZANETTI      | ITA | MV Agusta Reparto Corse         | MV Agusta F3 675    |       | <b>1'42.533</b> | 1.026  | 0.025 | 20   | 154,873 | <b>260,2</b> |
| 13                        | 64 F. CARICASULO   | ITA | Bardahl Evan Bros. Honda Racing | Honda CBR600RR      |       | <b>1'42.554</b> | 1.047  | 0.021 | 21   | 154,841 | <b>253,5</b> |
| 14                        | 78 H. OKUBO        | JPN | CIA Landlord Insurance Honda    | Honda CBR600RR      |       | <b>1'42.562</b> | 1.055  | 0.008 | 21   | 154,829 | <b>255,9</b> |
| 15                        | 71 C. BERGMAN      | SWE | CIA Landlord Insurance Honda    | Honda CBR600RR      |       | <b>1'42.599</b> | 1.092  | 0.037 | 25   | 154,773 | <b>255,9</b> |
| 16                        | 65 M. CANDUCCI     | ITA | GRT Racing Team                 | MV Agusta F3 675    |       | <b>1'42.665</b> | 1.158  | 0.066 | 25   | 154,674 | <b>257,1</b> |
| 17                        | 4 G. REA           | GBR | GRT Racing Team                 | MV Agusta F3 675    |       | <b>1'42.974</b> | 1.467  | 0.309 | 20   | 154,210 | <b>250,0</b> |
| 18                        | 77 K. RYDE         | GBR | Schmidt Racing                  | Kawasaki ZX-6R      |       | <b>1'43.013</b> | 1.506  | 0.039 | 21   | 154,151 | <b>257,8</b> |
| 19                        | 81 L. STAPLEFORD   | GBR | Profile Racing                  | Triumph Daytona 675 |       | <b>1'43.038</b> | 1.531  | 0.025 | 27   | 154,114 | <b>254,7</b> |
| 20                        | 111 K. SMITH       | GBR | CIA Landlord Insurance Honda    | Honda CBR600RR      |       | <b>1'43.295</b> | 1.788  | 0.257 | 23   | 153,731 | <b>257,1</b> |
| 21                        | 26 G. ANTIGA       | FRA | MTM / HS Kawasaki               | Kawasaki ZX-6R      | ESS   | <b>1'43.340</b> | 1.833  | 0.045 | 26   | 153,664 | <b>252,9</b> |
| 22                        | 23 C. TANGRE       | FRA | Team Yohann Moto Sport          | Suzuki GSX-R600     | ESS   | <b>1'43.363</b> | 1.856  | 0.023 | 24   | 153,629 | <b>250,6</b> |
| 23                        | 44 R. ROLFO        | ITA | Team Factory Vamag              | MV Agusta F3 675    |       | <b>1'43.415</b> | 1.908  | 0.052 | 21   | 153,552 | <b>254,7</b> |
| 24                        | 63 Z. KHAIRUDDIN   | MAS | Orelac Racing VerdNatura        | Kawasaki ZX-6R      |       | <b>1'43.432</b> | 1.925  | 0.017 | 23   | 153,527 | <b>256,5</b> |
| 25                        | 80 X. PINSACH      | ESP | Gemar Balloons - Team Lorini    | Honda CBR600RR      |       | <b>1'43.533</b> | 2.026  | 0.101 | 24   | 153,377 | <b>254,7</b> |
| 26                        | 10 N. CALERO       | ESP | Orelac Racing VerdNatura        | Kawasaki ZX-6R      |       | <b>1'43.680</b> | 2.173  | 0.147 | 25   | 153,160 | <b>257,1</b> |
| 27                        | 69 O. JEZEK        | CZE | Team GoEleven                   | Kawasaki ZX-6R      |       | <b>1'44.072</b> | 2.565  | 0.392 | 16   | 152,583 | <b>257,1</b> |
| 28                        | 6 D. STIRPE        | ITA | Scuderia Maranga Racing         | Kawasaki ZX-6R      | ESS   | <b>1'44.136</b> | 2.629  | 0.064 | 23   | 152,489 | <b>254,1</b> |
| 29                        | 12 C. GOBBI        | ITA | VFT Racing                      | Yamaha YZF R6       | ESS   | <b>1'44.395</b> | 2.888  | 0.259 | 18   | 152,111 | <b>252,3</b> |
| 30                        | 38 H. SOOMER       | EST | Kallio Racing                   | Yamaha YZF R6       |       | <b>1'44.478</b> | 2.971  | 0.083 | 18   | 151,990 | <b>254,7</b> |
| 31                        | 183 P. POLESSO     | FRA | TCP Racing                      | Yamaha YZF R6       |       | <b>1'44.597</b> | 3.090  | 0.119 | 26   | 151,817 | <b>246,0</b> |
| 32                        | 83 L. EPIS         | AUS | Response RE Racing              | Kawasaki ZX-6R      |       | <b>1'44.765</b> | 3.258  | 0.168 | 22   | 151,574 | <b>250,0</b> |
| 33                        | 58 C. STOLL        | FRA | CS Race Team                    | Triumph Daytona 675 |       | <b>1'44.846</b> | 3.339  | 0.081 | 18   | 151,456 | <b>245,5</b> |
| 34                        | 35 S. HILL         | GBR | CIA Landlord Insurance Honda    | Honda CBR600RR      |       | <b>1'45.265</b> | 3.758  | 0.419 | 24   | 150,854 | <b>254,1</b> |
| 35                        | 20 D. LOUREIRO     | RSA | WILSport Racedays Honda         | Honda CBR600RR      | ESS   | <b>1'45.272</b> | 3.765  | 0.007 | 24   | 150,844 | <b>248,8</b> |
| 36                        | 42 S. FROSSARD     | SUI | Team CMS                        | Yamaha YZF R6       |       | <b>1'45.342</b> | 3.835  | 0.070 | 21   | 150,743 | <b>247,7</b> |
| 37                        | 123 F. PERON       | FRA | Team 23 FELIX LE PI-LOT by ASPI | Yamaha YZF R6       |       | <b>1'45.922</b> | 4.415  | 0.580 | 19   | 149,918 | <b>242,7</b> |
| 38                        | 50 B. ORTT         | CAN | WILSport Racedays Honda         | Honda CBR600RR      | ESS   | <b>1'45.951</b> | 4.444  | 0.029 | 23   | 149,877 | <b>245,5</b> |
| ----- Not Qualified ----- |                    |     |                                 |                     |       |                 |        |       |      |         |              |
| NQ                        | 7 A. LICCIARDI     | BEL | R2 MotorRacing Team             | Honda CBR600RR      | ESS   | <b>1'52.650</b> | 11.143 | 6.699 | 9    | 140,964 | <b>246,0</b> |

Qualifying Lap Time (107% of 1'41.507): 1'48.613

|       |            |     |       |      |
|-------|------------|-----|-------|------|
| AIR   | Humidity:  | 53% | Temp: | 23°C |
| TRACK | Condition: | Dry | Temp: | 29°C |

|                           |          |         |      |
|---------------------------|----------|---------|------|
| Lap Record 2014 J.Cluzel  | 1'40.550 | 157,930 | Km/h |
| Best Lap 2009 C.Crutchlow | 1'41.407 | 156,590 | Km/h |

These data/results cannot be reproduced, stored and/or transmitted in whole or in part by any manner of electronic, mechanical, photocopying, recording, broadcasting or otherwise now known or herein after developed without the previous express consent by the copyright owner, except for reproduction in daily press and regular printed publications on sale to the public within 60 days of the event related to those data/results and always provided that copyright symbol appears together as follows below.

© DORNA WSBK ORGANIZATION Srl 2016

|                  |       |  |
|------------------|-------|--|
| Start            | End   | The results are provisional until the end of the time limit for protests and appeals |
| 30/09/2016 14:45 | 15:53 | and the completion of the technical checks.  |

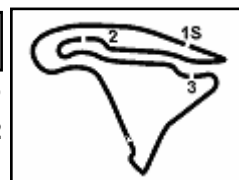
FIGR PERUGIA TIMING



Official Tyre Supplier



Official Timekeeper



## French Round, 30 September 1-2 October 2016

### World Supersport - Results Free Practice 2nd Session

#### Session Highlights

|          |          |   |
|----------|----------|---|
| 14.45.04 |          | Start   |
| 14.50.35 | Badovini | Lap Cancelled - Exit Track Limits               |
| 14.51.20 | Gamarino | Lap Cancelled - Exit Track Limits               |
| 14.52.49 | Calero   | Lap Cancelled - Exit Track Limits               |
| 14.54.48 | Epis     | Lap Cancelled - Exit Track Limits               |
| 14.55.02 | Antiga   | Lap Cancelled - Exit Track Limits               |
| 14.56.17 | Tuuli    | Lap Cancelled - Exit Track Limits               |
| 14.58.45 | Antiga   | Lap Cancelled - Exit Track Limits               |
| 15.00.42 | Hill     | Lap Cancelled - Exit Track Limits               |
| 15.01.53 | Antiga   | Lap Cancelled - Exit Track Limits               |
| 15.08.09 | Antiga   | Lap Cancelled - Exit Track Limits               |
| 15.08.24 | Epis     | Lap Cancelled - Exit Track Limits               |
| 15.09.53 | Hill     | Lap Cancelled - Exit Track Limits               |
| 15.10.01 | Calero   | Lap Cancelled - Exit Track Limits               |
| 15.12.09 | Hill     | Lap Cancelled - Exit Track Limits               |
| 15.13.20 | Gobbi    | Lap Cancelled - Exit Track Limits               |
| 15.17.52 | Rea      | Crashed - Turn 12                               |
| 15.18.13 | Rea      | Re-joined                                       |
| 15.18.43 | Polesso  | Lap Cancelled - Exit Track Limits               |
| 15.19.36 | Peron    | Lap Cancelled - Exit Track Limits               |
| 15.25.27 | Stirpe   | Lap Cancelled - Exit Track Limits               |
| 15.27.23 | Calero   | Lap Cancelled - Exit Track Limits               |
| 15.29.27 | Stoll    | Lap Cancelled - Exit Track Limits               |
| 15.30.07 | Stoll    | Technical Problem - Turn 8                      |
| 15.30.17 | Stoll    | Re-joined                                       |
| 15.30.39 | Stoll    | Technical Problem - Turn 10                     |
| 15.32.40 | Gamarino | Lap Cancelled - Exit Track Limits               |
| 15.33.12 | Epis     | Lap Cancelled - Exit Track Limits               |
| 15.33.18 | Antiga   | Lap Cancelled - Exit Track Limits               |
| 15.35.58 | Zacccone | Crashed - Turn 5                                |
| 15.35.59 | Jezek    | Crashed - Turn 5                                |
| 15.36.46 |          | RED FLAG  |
| 15.43.00 |          | Session Restarts                                |
| 15.47.45 | Okubo    | Lap Cancelled - Exit Track Limits               |
| 15.48.12 | Polesso  | Lap Cancelled - Exit Track Limits               |
| 15.48.31 | Ryde     | Under Investigation                             |
| 15.50.00 | Ryde     | Lap Cancelled (1'43.286) - Exceeding Track Limi |
| 15.50.53 | Bassani  | Lap Cancelled - Exit Track Limits               |
| 15.53.09 |          | End Of Session                                  |

#### Fastest Laps Sequence

| No. | Rider           | Nat | Team                         | Bike             | Local Time   | Time            | Gap     | Avg     |
|-----|-----------------|-----|------------------------------|------------------|--------------|-----------------|---------|---------|
| 26  | G. ANTIGA       | FRA | MTM / HS Kawasaki            | Kawasaki ZX-6R   | 14:48'31.001 | <b>2'12.911</b> |         | 119,475 |
| 80  | X. PINSACH      | ESP | Gemar Balloons - Team Lorini | Honda CBR600RR   | 14:48'36.275 | <b>1'44.795</b> | -28.116 | 151,530 |
| 111 | K. SMITH        | GBR | CIA Landlord Insurance Honda | Honda CBR600RR   | 14:48'36.531 | <b>1'44.776</b> | -0.019  | 151,558 |
| 78  | H. OKUBO        | JPN | CIA Landlord Insurance Honda | Honda CBR600RR   | 14:48'37.766 | <b>1'44.373</b> | -0.403  | 152,143 |
| 25  | A. BALDOLINI    | ITA | Race Department ATK#25       | MV Agusta F3 675 | 14:48'50.235 | <b>1'43.941</b> | -0.432  | 152,775 |
| 1   | K. SOFUOGLU     | TUR | Kawasaki Puccetti Racing     | Kawasaki ZX-6R   | 14:50'13.345 | <b>1'42.759</b> | -1.182  | 154,532 |
| 1   | K. SOFUOGLU     | TUR | Kawasaki Puccetti Racing     | Kawasaki ZX-6R   | 14:51'55.756 | <b>1'42.411</b> | -0.348  | 155,058 |
| 21  | R. KRUMMENACHER | SUI | Kawasaki Puccetti Racing     | Kawasaki ZX-6R   | 14:51'56.050 | <b>1'42.188</b> | -0.223  | 155,396 |
| 21  | R. KRUMMENACHER | SUI | Kawasaki Puccetti Racing     | Kawasaki ZX-6R   | 14:53'37.965 | <b>1'41.915</b> | -0.273  | 155,812 |
| 1   | K. SOFUOGLU     | TUR | Kawasaki Puccetti Racing     | Kawasaki ZX-6R   | 15:08'45.361 | <b>1'41.507</b> | -0.408  | 156,438 |

These data/results cannot be reproduced, stored and/or transmitted in whole or in part by any manner of electronic, mechanical, photocopying, recording, broadcasting or otherwise now known or herein after developed without the previous express consent by the copyright owner, except for reproduction in daily press and regular printed publications on sale to the public within 60 days of the event related to those data/results and always provided that copyright symbol appears together as follows below.

© DORNA WSBK ORGANIZATION Srl 2016

Start 14:45 End 15:53 The results are provisional until the end of the time limit for protests and appeals and the completion of the technical checks.

## French Round, 30 September 1-2 October 2016

### World Supersport - Best Sector & Speed Free Practice 2nd Session

**Best Lap**

|    |                    |                     |          |
|----|--------------------|---------------------|----------|
| 1  | 1 K. SOFUOGLU      | Kawasaki ZX-6R      | 1'41.507 |
| 2  | 21 R. KRUMMENACHER | Kawasaki ZX-6R      | 1'41.889 |
| 3  | 55 I. MIKHALCHIK   | Kawasaki ZX-6R      | 1'41.916 |
| 4  | 86 A. BADOVINI     | Honda CBR600RR      | 1'41.923 |
| 5  | 47 A. BASSANI      | Kawasaki ZX-6R      | 1'41.948 |
| 6  | 66 N. TUULI        | Yamaha YZF R6       | 1'42.044 |
| 7  | 16 J. CLUZEL       | MV Austa F3 675     | 1'42.200 |
| 8  | 11 C. GAMARINO     | Kawasaki ZX-6R      | 1'42.286 |
| 9  | 25 A. BALDOLINI    | MV Austa F3 675     | 1'42.299 |
| 10 | 61 A. ZACCONE      | Kawasaki ZX-6R      | 1'42.370 |
| 11 | 2 P. JACOBSEN      | Honda CBR600RR      | 1'42.508 |
| 12 | 87 L. ZANETTI      | MV Austa F3 675     | 1'42.533 |
| 13 | 64 F. CARICASULO   | Honda CBR600RR      | 1'42.554 |
| 14 | 78 H. OKUBO        | Honda CBR600RR      | 1'42.562 |
| 15 | 71 C. BERGMAN      | Honda CBR600RR      | 1'42.599 |
| 16 | 65 M. CANDUCCI     | MV Austa F3 675     | 1'42.665 |
| 17 | 4 G. REA           | MV Austa F3 675     | 1'42.974 |
| 18 | 77 K. RYDE         | Kawasaki ZX-6R      | 1'43.013 |
| 19 | 81 L. STAPLEFORD   | Triumph Daytona 675 | 1'43.038 |
| 20 | 111 K. SMITH       | Honda CBR600RR      | 1'43.295 |
| 21 | 26 G. ANTIGA       | Kawasaki ZX-6R      | 1'43.340 |
| 22 | 23 C. TANGRE       | Suzuki GSX-R600     | 1'43.363 |
| 23 | 44 R. ROLFO        | MV Austa F3 675     | 1'43.415 |
| 24 | 63 Z. KHAIRUDDIN   | Kawasaki ZX-6R      | 1'43.432 |
| 25 | 80 X. PINSACH      | Honda CBR600RR      | 1'43.533 |
| 26 | 10 N. CALERO       | Kawasaki ZX-6R      | 1'43.680 |
| 27 | 69 O. JEZEK        | Kawasaki ZX-6R      | 1'44.072 |
| 28 | 6 D. STIRPE        | Kawasaki ZX-6R      | 1'44.136 |
| 29 | 12 C. GOBBI        | Yamaha YZF R6       | 1'44.395 |
| 30 | 38 H. SOOMER       | Yamaha YZF R6       | 1'44.478 |
| 31 | 183 P. POLESSO     | Yamaha YZF R6       | 1'44.597 |
| 32 | 83 L. EPIS         | Kawasaki ZX-6R      | 1'44.765 |
| 33 | 58 C. STOLL        | Triumph Daytona 675 | 1'44.846 |
| 34 | 35 S. HILL         | Honda CBR600RR      | 1'45.265 |
| 35 | 20 D. LOUREIRO     | Honda CBR600RR      | 1'45.272 |
| 36 | 42 S. FROSSARD     | Yamaha YZF R6       | 1'45.342 |
| 37 | 123 F. PERON       | Yamaha YZF R6       | 1'45.922 |
| 38 | 50 B. ORTT         | Honda CBR600RR      | 1'45.951 |
| 39 | 7 A. LICCIARDI     | Honda CBR600RR      | 1'52.650 |

**Best Sector & Speed**

|    |                    |                     |       |
|----|--------------------|---------------------|-------|
| 1  | 66 N. TUULI        | Yamaha YZF R6       | 260.9 |
| 2  | 2 P. JACOBSEN      | Honda CBR600RR      | 260.2 |
| 3  | 21 R. KRUMMENACHER | Kawasaki ZX-6R      | 260.2 |
| 4  | 87 L. ZANETTI      | MV Austa F3 675     | 260.2 |
| 5  | 1 K. SOFUOGLU      | Kawasaki ZX-6R      | 259.6 |
| 6  | 55 I. MIKHALCHIK   | Kawasaki ZX-6R      | 259.0 |
| 7  | 77 K. RYDE         | Kawasaki ZX-6R      | 257.8 |
| 8  | 65 M. CANDUCCI     | MV Austa F3 675     | 257.1 |
| 9  | 111 K. SMITH       | Honda CBR600RR      | 257.1 |
| 10 | 10 N. CALERO       | Kawasaki ZX-6R      | 257.1 |
| 11 | 69 O. JEZEK        | Kawasaki ZX-6R      | 257.1 |
| 12 | 25 A. BALDOLINI    | MV Austa F3 675     | 257.1 |
| 13 | 47 A. BASSANI      | Kawasaki ZX-6R      | 257.1 |
| 14 | 63 Z. KHAIRUDDIN   | Kawasaki ZX-6R      | 256.5 |
| 15 | 16 J. CLUZEL       | MV Austa F3 675     | 256.5 |
| 16 | 78 H. OKUBO        | Honda CBR600RR      | 255.9 |
| 17 | 71 C. BERGMAN      | Honda CBR600RR      | 255.9 |
| 18 | 86 A. BADOVINI     | Honda CBR600RR      | 255.9 |
| 19 | 11 C. GAMARINO     | Kawasaki ZX-6R      | 255.9 |
| 20 | 81 L. STAPLEFORD   | Triumph Daytona 675 | 254.7 |
| 21 | 44 R. ROLFO        | MV Austa F3 675     | 254.7 |
| 22 | 38 H. SOOMER       | Yamaha YZF R6       | 254.7 |
| 23 | 80 X. PINSACH      | Honda CBR600RR      | 254.7 |
| 24 | 6 D. STIRPE        | Kawasaki ZX-6R      | 254.1 |
| 25 | 35 S. HILL         | Honda CBR600RR      | 254.1 |
| 26 | 61 A. ZACCONE      | Kawasaki ZX-6R      | 254.1 |
| 27 | 64 F. CARICASULO   | Honda CBR600RR      | 253.5 |
| 28 | 26 G. ANTIGA       | Kawasaki ZX-6R      | 252.9 |
| 29 | 12 C. GOBBI        | Yamaha YZF R6       | 252.3 |
| 30 | 23 C. TANGRE       | Suzuki GSX-R600     | 250.6 |
| 31 | 4 G. REA           | MV Austa F3 675     | 250.0 |
| 32 | 83 L. EPIS         | Kawasaki ZX-6R      | 250.0 |
| 33 | 20 D. LOUREIRO     | Honda CBR600RR      | 248.8 |
| 34 | 42 S. FROSSARD     | Yamaha YZF R6       | 247.7 |
| 35 | 183 P. POLESSO     | Yamaha YZF R6       | 246.0 |
| 36 | 7 A. LICCIARDI     | Honda CBR600RR      | 246.0 |
| 37 | 58 C. STOLL        | Triumph Daytona 675 | 245.5 |
| 38 | 50 B. ORTT         | Honda CBR600RR      | 245.5 |
| 39 | 123 F. PERON       | Yamaha YZF R6       | 242.7 |

**Seg. 1**

|    |                    |        |
|----|--------------------|--------|
| 1  | 1 K. SOFUOGLU      | 30.597 |
| 2  | 66 N. TUULI        | 30.835 |
| 3  | 86 A. BADOVINI     | 30.836 |
| 4  | 21 R. KRUMMENACHER | 30.907 |
| 5  | 61 A. ZACCONE      | 30.929 |
| 6  | 47 A. BASSANI      | 30.959 |
| 7  | 25 A. BALDOLINI    | 30.992 |
| 8  | 55 I. MIKHALCHIK   | 31.016 |
| 9  | 64 F. CARICASULO   | 31.078 |
| 10 | 16 J. CLUZEL       | 31.125 |
| 11 | 69 O. JEZEK        | 31.127 |
| 12 | 11 C. GAMARINO     | 31.128 |
| 13 | 81 L. STAPLEFORD   | 31.147 |
| 14 | 2 P. JACOBSEN      | 31.149 |
| 15 | 87 L. ZANETTI      | 31.313 |
| 16 | 71 C. BERGMAN      | 31.183 |
| 17 | 78 H. OKUBO        | 31.202 |
| 18 | 77 K. RYDE         | 31.273 |
| 19 | 44 R. ROLFO        | 31.307 |
| 20 | 12 C. GOBBI        | 31.313 |
| 21 | 10 N. CALERO       | 31.325 |
| 22 | 65 M. CANDUCCI     | 31.329 |
| 23 | 63 Z. KHAIRUDDIN   | 31.329 |
| 24 | 4 G. REA           | 31.330 |
| 25 | 111 K. SMITH       | 31.336 |
| 26 | 26 G. ANTIGA       | 31.391 |
| 27 | 6 D. STIRPE        | 31.418 |
| 28 | 80 X. PINSACH      | 31.428 |
| 29 | 23 C. TANGRE       | 31.575 |
| 30 | 38 H. SOOMER       | 31.610 |
| 31 | 83 L. EPIS         | 31.782 |
| 32 | 183 P. POLESSO     | 31.862 |
| 33 | 58 C. STOLL        | 31.909 |
| 34 | 20 D. LOUREIRO     | 31.963 |
| 35 | 50 B. ORTT         | 31.989 |
| 36 | 35 S. HILL         | 32.066 |
| 37 | 42 S. FROSSARD     | 32.129 |
| 38 | 123 F. PERON       | 32.286 |
| 39 | 7 A. LICCIARDI     | 33.793 |

**Seg. 2**

|    |                    |        |
|----|--------------------|--------|
| 1  | 86 A. BADOVINI     | 22.164 |
| 2  | 1 K. SOFUOGLU      | 22.173 |
| 3  | 65 M. CANDUCCI     | 22.190 |
| 4  | 55 I. MIKHALCHIK   | 22.205 |
| 5  | 47 A. BASSANI      | 22.264 |
| 6  | 21 R. KRUMMENACHER | 22.264 |
| 7  | 66 N. TUULI        | 22.290 |
| 8  | 16 J. CLUZEL       | 22.302 |
| 9  | 25 A. BALDOLINI    | 22.306 |
| 10 | 61 A. ZACCONE      | 22.315 |
| 11 | 11 C. GAMARINO     | 22.348 |
| 12 | 71 C. BERGMAN      | 22.382 |
| 13 | 77 K. RYDE         | 22.399 |
| 14 | 64 F. CARICASULO   | 22.411 |
| 15 | 2 P. JACOBSEN      | 22.421 |
| 16 | 80 X. PINSACH      | 22.479 |
| 17 | 81 L. STAPLEFORD   | 22.490 |
| 18 | 4 G. REA           | 22.494 |
| 19 | 78 H. OKUBO        | 22.498 |
| 20 | 111 K. SMITH       | 22.529 |
| 21 | 23 C. TANGRE       | 22.564 |
| 22 | 87 L. ZANETTI      | 22.582 |
| 23 | 63 Z. KHAIRUDDIN   | 22.597 |
| 24 | 26 G. ANTIGA       | 22.677 |
| 25 | 44 R. ROLFO        | 22.703 |
| 26 | 10 N. CALERO       | 22.725 |
| 27 | 69 O. JEZEK        | 22.735 |
| 28 | 83 L. EPIS         | 22.757 |
| 29 | 38 H. SOOMER       | 22.813 |
| 30 | 58 C. STOLL        | 22.822 |
| 31 | 183 P. POLESSO     | 22.822 |
| 32 | 20 D. LOUREIRO     | 22.842 |
| 33 | 6 D. STIRPE        | 22.874 |
| 34 | 35 S. HILL         | 22.899 |
| 35 | 12 C. GOBBI        | 22.949 |
| 36 | 42 S. FROSSARD     | 22.978 |
| 37 | 50 B. ORTT         | 23.006 |
| 38 | 123 F. PERON       | 23.089 |
| 39 | 7 A. LICCIARDI     | 24.591 |

**Seg. 3**

|    |                    |        |
|----|--------------------|--------|
| 1  | 1 K. SOFUOGLU      | 22.583 |
| 2  | 66 N. TUULI        | 22.738 |
| 3  | 11 C. GAMARINO     | 22.768 |
| 4  | 21 R. KRUMMENACHER | 22.804 |
| 5  | 25 A. BALDOLINI    | 22.839 |
| 6  | 55 I. MIKHALCHIK   | 22.855 |
| 7  | 87 L. ZANETTI      | 22.862 |
| 8  | 86 A. BADOVINI     | 22.868 |
| 9  | 71 C. BERGMAN      | 22.902 |
| 10 | 16 J. CLUZEL       | 22.910 |
| 11 | 61 A. ZACCONE      | 22.919 |
| 12 | 47 A. BASSANI      | 22.955 |
| 13 | 64 F. CARICASULO   | 22.955 |
| 14 | 4 G. REA           | 22.964 |
| 15 | 23 C. TANGRE       | 22.973 |
| 16 | 2 P. JACOBSEN      | 22.983 |
| 17 | 111 K. SMITH       | 23.009 |
| 18 | 65 M. CANDUCCI     | 23.015 |
| 19 | 78 H. OKUBO        | 23.051 |
| 20 | 44 R. ROLFO        | 23.076 |
| 21 | 26 G. ANTIGA       | 23.098 |
| 22 | 81 L. STAPLEFORD   | 23.116 |
| 23 | 77 K. RYDE         | 23.190 |
| 24 | 63 Z. KHAIRUDDIN   | 23.255 |
| 25 | 183 P. POLESSO     | 23.276 |
| 26 | 6 D. STIRPE        | 23.302 |
| 27 | 69 O. JEZEK        | 23.308 |
| 28 | 80 X. PINSACH      | 23.326 |
| 29 | 10 N. CALERO       | 23.358 |
| 30 | 38 H. SOOMER       | 23.366 |
| 31 | 83 L. EPIS         | 23.391 |
| 32 | 12 C. GOBBI        | 23.401 |
| 33 | 58 C. STOLL        | 23.550 |
| 34 | 123 F. PERON       | 23.556 |
| 35 | 20 D. LOUREIRO     | 23.565 |
| 36 | 35 S. HILL         | 23.603 |
| 37 | 42 S. FROSSARD     | 23.634 |
| 38 | 50 B. ORTT         | 23.782 |
| 39 | 7 A. LICCIARDI     | 25.644 |

**Seg. 4**

|    |                    |        |
|----|--------------------|--------|
| 1  | 86 A. BADOVINI     | 25.665 |
| 2  | 55 I. MIKHALCHIK   | 25.682 |
| 3  | 47 A. BASSANI      | 25.706 |
| 4  | 78 H. OKUBO        | 25.715 |
| 5  | 2 P. JACOBSEN      | 25.718 |
| 6  | 1 K. SOFUOGLU      | 25.735 |
| 7  | 21 R. KRUMMENACHER | 25.745 |
| 8  | 66 N. TUULI        | 25.747 |
| 9  | 87 L. ZANETTI      | 25.753 |
| 10 | 25 A. BALDOLINI    | 25.771 |
| 11 | 16 J. CLUZEL       | 25.805 |
| 12 | 26 G. ANTIGA       | 25.815 |
| 13 | 64 F. CARICASULO   | 25.827 |
| 14 | 71 C. BERGMAN      | 25.870 |
| 15 | 11 C. GAMARINO     | 25.882 |
| 16 | 65 M. CANDUCCI     | 25.913 |
| 17 | 81 L. STAPLEFORD   | 25.920 |
| 18 | 77 K. RYDE         | 25.928 |
| 19 | 111 K. SMITH       | 25.932 |
| 20 | 61 A. ZACCONE      | 25.943 |
| 21 | 4 G. REA           | 25.948 |
| 22 | 10 N. CALERO       | 26.009 |
| 23 | 63 Z. KHAIRUDDIN   | 26.083 |
| 24 | 23 C. TANGRE       | 26.088 |
| 25 | 80 X. PINSACH      | 26.102 |
| 26 | 38 H. SOOMER       | 26.104 |
| 27 | 44 R. ROLFO        | 26.135 |
| 28 | 58 C. STOLL        | 26.175 |
| 29 | 69 O. JEZEK        | 26.299 |
| 30 | 12 C. GOBBI        | 26.316 |
| 31 | 6 D. STIRPE        | 26.334 |
| 32 | 183 P. POLESSO     | 26.405 |
| 33 | 20 D. LOUREIRO     | 26.493 |
| 34 | 83 L. EPIS         | 26.529 |
| 35 | 123 F. PERON       | 26.532 |
| 36 | 42 S. FROSSARD     | 26.601 |
| 37 | 35 S. HILL         | 26.659 |
| 38 | 50 B. ORTT         | 26.663 |
| 39 | 7 A. LICCIARDI     | 28.622 |

30/09/2016

These data/results cannot be reproduced, stored and/or transmitted in whole or in part by any manner of electronic, mechanical, photocopying, recording, broadcasting or otherwise now known or herein after developed without the previous express consent by the copyright owner, except for reproduction in daily press and regular printed publications on sale to the public within 60 days of the event related to those data/results and always provided that copyright symbol appears together as follows below.

© DORNA WSBK ORGANIZATION Srl 2016

FICR PERUGIA TIMING

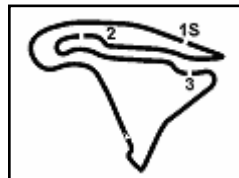


Official Tyre Supplier



Official Timekeeper





## French Round, 30 September 1-2 October 2016

### World Supersport - Ideal Times Free Practice 2nd Session

| No. | Rider                     | Nat | Bike                | Seg.          |               |               |               | Ideal Time      |      |       |
|-----|---------------------------|-----|---------------------|---------------|---------------|---------------|---------------|-----------------|------|-------|
|     |                           |     |                     | Diff. 1       | Diff. 2       | Diff. 3       | Diff. 4       | Best Lap        | Pos. | Diff. |
| 1   | <b>1 K. SOFUOGLU</b>      | TUR | Kawasaki ZX-6R      | <b>30.597</b> | 22.173        | <b>22.583</b> | 25.735        | <b>1'41.088</b> |      |       |
| 2   | <b>86 A. BADOVINI</b>     | ITA | Honda CBR600RR      | 30.836        | <b>22.164</b> | 22.868        | <b>25.665</b> | <b>1'41.533</b> | 1    | 0.419 |
| 3   | <b>66 N. TUULI</b>        | FIN | Yamaha YZF R6       | 30.835        | 22.290        | 22.738        | 25.747        | <b>1'41.610</b> | 4    | 0.390 |
| 4   | <b>21 R. KRUMMENACHER</b> | SUI | Kawasaki ZX-6R      | 30.907        | 22.264        | 22.804        | 25.745        | <b>1'41.720</b> | 6    | 0.434 |
| 5   | <b>55 I. MIKHALCHIK</b>   | UKR | Kawasaki ZX-6R      | 30.907        | 22.264        | 22.804        | 25.745        | <b>1'41.720</b> | 2    | 0.169 |
| 6   | <b>47 A. BASSANI</b>      | ITA | Kawasaki ZX-6R      | 31.016        | 22.205        | 22.855        | 25.682        | <b>1'41.758</b> | 3    | 0.158 |
| 7   | <b>25 A. BALDOLINI</b>    | ITA | MV Agusta F3 675    | 30.959        | 22.264        | 22.955        | 25.706        | <b>1'41.884</b> | 5    | 0.064 |
| 8   | <b>61 A. ZACCONE</b>      | ITA | MV Agusta F3 675    | 30.992        | 22.306        | 22.839        | 25.771        | <b>1'41.908</b> | 9    | 0.391 |
| 9   | <b>11 C. GAMARINO</b>     | ITA | Kawasaki ZX-6R      | 30.929        | 22.315        | 22.919        | 25.943        | <b>1'42.106</b> | 10   | 0.264 |
| 10  | <b>16 J. CLUZEL</b>       | FRA | MV Agusta F3 675    | 30.929        | 22.315        | 22.919        | 25.943        | <b>1'42.106</b> | 8    | 0.160 |
| 11  | <b>2 P. JACOBSEN</b>      | USA | Honda CBR600RR      | 31.128        | 22.348        | 22.768        | 25.882        | <b>1'42.126</b> | 7    | 0.058 |
| 12  | <b>64 F. CARICASULO</b>   | ITA | Honda CBR600RR      | 31.125        | 22.302        | 22.910        | 25.805        | <b>1'42.142</b> | 11   | 0.237 |
| 13  | <b>71 C. BERGMAN</b>      | SWE | Honda CBR600RR      | 31.149        | 22.421        | 22.983        | 25.718        | <b>1'42.271</b> | 13   | 0.283 |
| 14  | <b>87 L. ZANETTI</b>      | ITA | MV Agusta F3 675    | 31.078        | 22.411        | 22.955        | 25.827        | <b>1'42.271</b> | 15   | 0.262 |
| 15  | <b>65 M. CANDUCCI</b>     | ITA | MV Agusta F3 675    | 31.183        | 22.382        | 22.902        | 25.870        | <b>1'42.337</b> | 12   | 0.186 |
| 16  | <b>78 H. OKUBO</b>        | JPN | Honda CBR600RR      | 31.150        | 22.582        | 22.862        | 25.753        | <b>1'42.347</b> | 14   | 0.096 |
| 17  | <b>81 L. STAPLEFORD</b>   | GBR | Triumph Daytona 675 | 31.329        | 22.190        | 23.015        | 25.913        | <b>1'42.447</b> | 19   | 0.365 |
| 18  | <b>4 G. REA</b>           | GBR | MV Agusta F3 675    | 31.202        | 22.498        | 23.051        | 25.715        | <b>1'42.466</b> | 17   | 0.238 |
| 19  | <b>77 K. RYDE</b>         | GBR | Kawasaki ZX-6R      | 31.147        | 22.490        | 23.116        | 25.920        | <b>1'42.673</b> | 18   | 0.223 |
| 20  | <b>111 K. SMITH</b>       | GBR | Honda CBR600RR      | 31.330        | 22.494        | 22.964        | 25.948        | <b>1'42.736</b> | 20   | 0.489 |
| 21  | <b>26 G. ANTIGA</b>       | FRA | Kawasaki ZX-6R      | 31.273        | 22.399        | 23.190        | 25.928        | <b>1'42.790</b> | 21   | 0.359 |
| 22  | <b>23 C. TANGRE</b>       | FRA | Suzuki GSX-R600     | 31.336        | 22.529        | 23.009        | 25.932        | <b>1'42.806</b> | 23   | 0.194 |
| 23  | <b>44 R. ROLFO</b>        | ITA | MV Agusta F3 675    | 31.391        | 22.677        | 23.098        | 25.815        | <b>1'42.981</b> | 24   | 0.168 |
| 24  | <b>63 Z. KHAIRUDDIN</b>   | MAS | Kawasaki ZX-6R      | 31.575        | 22.564        | 22.973        | 26.088        | <b>1'43.200</b> | 25   | 0.198 |
| 25  | <b>80 X. PINSACH</b>      | ESP | Honda CBR600RR      | 31.307        | 22.703        | 23.076        | 26.135        | <b>1'43.221</b> | 26   | 0.263 |
| 26  | <b>10 N. CALERO</b>       | ESP | Kawasaki ZX-6R      | 31.428        | 22.479        | 23.326        | 26.102        | <b>1'43.335</b> | 27   | 0.603 |
| 27  | <b>69 O. JEZEK</b>        | CZE | Kawasaki ZX-6R      | 31.325        | 22.725        | 23.358        | 26.009        | <b>1'43.417</b> | 28   | 0.208 |
| 28  | <b>38 H. SOOMER</b>       | EST | Yamaha YZF R6       | 31.116        | 0.020         |               | 0.127         | <b>1'43.680</b> | 29   | 0.416 |
| 29  | <b>6 D. STIRPE</b>        | ITA | Kawasaki ZX-6R      | 31.127        | 22.735        | 23.308        | 26.299        | <b>1'43.469</b> | 30   | 0.585 |
| 30  | <b>12 C. GOBBI</b>        | ITA | Yamaha YZF R6       | 31.610        | 22.813        | 23.366        | 26.104        | <b>1'43.893</b> | 31   | 0.232 |
| 31  | <b>183 P. POLESSO</b>     | FRA | Yamaha YZF R6       | 31.236        | 0.105         |               | 0.134         | <b>1'44.478</b> | 32   | 0.390 |
| 32  | <b>58 C. STOLL</b>        | FRA | Triumph Daytona 675 | 31.418        | 22.874        | 23.302        | 26.334        | <b>1'43.928</b> | 33   | 0.390 |
|     |                           |     |                     | 0.005         | 0.137         |               | 0.066         | <b>1'44.136</b> |      |       |
|     |                           |     |                     | 31.313        | 22.949        | 23.401        | 26.316        | <b>1'43.979</b> |      |       |
|     |                           |     |                     | 0.247         |               | 0.043         | 0.126         | <b>1'44.395</b> |      |       |
|     |                           |     |                     | 31.862        | 22.822        | 23.276        | 26.405        | <b>1'44.365</b> |      |       |
|     |                           |     |                     | 0.050         | 0.058         |               | 0.124         | <b>1'44.597</b> |      |       |
|     |                           |     |                     | 31.909        | 22.822        | 23.550        | 26.175        | <b>1'44.456</b> |      |       |
|     |                           |     |                     | 0.205         | 0.183         |               | 0.002         | <b>1'44.846</b> |      |       |

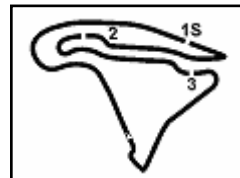
30/09/2016

These data/results cannot be reproduced, stored and/or transmitted in whole or in part by any manner of electronic, mechanical, photocopying, recording, broadcasting or otherwise now known or herein after developed without the previous express consent by the copyright owner, except for reproduction in daily press and regular printed publications on sale to the public within 60 days of the event related to those data/results and always provided that copyright symbol appears together as follows below.

© DORNA WSBK ORGANIZATION Srl 2016

FICR PERUGIA TIMING





Magny-Cours 4.411 m

2 / 2

## French Round, 30 September 1-2 October 2016

### World Supersport - Ideal Times Free Practice 2nd Session

| No.                       | Rider                 | Nat | Bike           | Seg. 1          | Seg. 2          | Seg. 3          | Seg. 4          | Ideal Time      |          |       |       |
|---------------------------|-----------------------|-----|----------------|-----------------|-----------------|-----------------|-----------------|-----------------|----------|-------|-------|
|                           |                       |     |                | Diff. 1         | Diff. 2         | Diff. 3         | Diff. 4         | Best Lap        | Pos.     | Diff. |       |
| 33                        | <b>83 L. EPIS</b>     | AUS | Kawasaki ZX-6R | 31.782<br>0.162 | 22.757<br>0.078 | 23.391          | 26.529<br>0.066 | <b>1'44.459</b> | 1'44.765 | 32    | 0.306 |
| 34                        | <b>20 D. LOUREIRO</b> | RSA | Honda CBR600RR | 31.963<br>0.006 | 22.842<br>0.081 | 23.565<br>0.302 | 26.493<br>0.020 | <b>1'44.863</b> | 1'45.272 | 35    | 0.409 |
| 35                        | <b>35 S. HILL</b>     | GBR | Honda CBR600RR | 32.066          | 22.899          | 23.603          | 26.659<br>0.038 | <b>1'45.227</b> | 1'45.265 | 34    | 0.038 |
| 36                        | <b>42 S. FROSSARD</b> | SUI | Yamaha YZF R6  | 32.129          | 22.978          | 23.634          | 26.601          | <b>1'45.342</b> | 1'45.342 | 36    | 0.000 |
| 37                        | <b>123 F. PERON</b>   | FRA | Yamaha YZF R6  | 32.286<br>0.107 | 23.089<br>0.009 | 23.556<br>0.343 | 26.532          | <b>1'45.463</b> | 1'45.922 | 37    | 0.459 |
| 38                        | <b>50 B. ORTT</b>     | CAN | Honda CBR600RR | 31.989<br>0.033 | 23.060<br>0.141 | 23.782<br>0.194 | 26.663<br>0.089 | <b>1'45.494</b> | 1'45.951 | 38    | 0.457 |
| 39                        | <b>7 A. LICCIARDI</b> | BEL | Honda CBR600RR | 33.793          | 24.591          | 25.644          | 28.622          | <b>1'52.650</b> | 1'52.650 | 39    | 0.000 |
| <b>Overall Ideal Time</b> |                       |     |                | 30.597          | 22.164          | 22.583          | 25.665          | <b>1'41.009</b> |          |       |       |

30/09/2016

These data/results cannot be reproduced, stored and/or transmitted in whole or in part by any manner of electronic, mechanical, photocopying, recording, broadcasting or otherwise now known or herein after developed without the previous express consent by the copyright owner, except for reproduction in daily press and regular printed publications on sale to the public within 60 days of the event related to those data/results and always provided that copyright symbol appears together as follows below.  
© DORNA WSBK ORGANIZATION Srl 2016

FICR PERUGIA TIMING

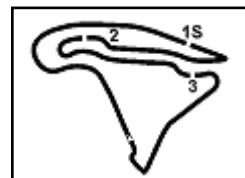


Official Tyre Supplier



Official Timekeeper





## French Round, 30 September 1-2 October 2016

### World Supersport - Chronological Analysis Free Practice 2nd Session

Magny-Cours 4.411 m

|    |               |               |               |               |                 |       |              |
|----|---------------|---------------|---------------|---------------|-----------------|-------|--------------|
| 11 | 30.957        | 22.476        | 22.816        | 25.925        | 1'42.174        | 256.5 | 15:13'38.291 |
| 12 | <b>30.835</b> | 22.400        | 23.141        | 26.022        | 1'42.398        | 257.8 | 15:15'20.689 |
| 13 | 31.054        | 25.185        | 29.108        | 28.155        | 1'53.502        | 257.1 | 15:17'14.191 |
| 14 | 31.028        | 22.434        | 23.209        | 26.130        | 1'42.801        | 256.5 | 15:18'56.992 |
| 15 | 31.145        | 22.384        | 22.809        | 25.980        | 1'42.318        | 255.9 | 15:20'39.310 |
| 16 | 34.314        | 27.082        | 26.339        | 32.029        | 1'59.764 P      | 175.3 | 15:22'39.074 |
| 17 | 9'06.232      | 24.338        | 23.602        | 26.203        | 1'02.375 P      | 227.8 | 15:32'59.449 |
| 18 | 31.243        | 22.428        | 22.884        | 25.837        | 1'42.392        | 252.9 | 15:34'41.841 |
| 19 | 30.973        | 22.481        | 22.843        | <b>25.747</b> | <b>1'42.044</b> | 254.1 | 15:36'23.885 |
| 20 | 31.132        | 30.149        | 29.200        | 32.312        | 2'02.793 C      | 196.4 | 15:38'26.678 |
| 21 | 5'37.335      | 23.227        | 24.005        | 26.230        | 1'42.797 P      | 229.8 | 15:45'17.475 |
| 22 | 31.018        | 22.449        | 22.833        | 25.828        | 1'42.128        | 252.9 | 15:46'59.603 |
| 23 | 31.002        | 22.453        | <b>22.738</b> | 25.890        | 1'42.083        | 254.1 | 15:48'41.686 |
| 24 | 36.690        | 28.621        | 24.868        | 27.234        | 1'57.413        | 199.6 | 15:50'39.099 |
| 25 | 31.332        | <b>22.290</b> | 23.159        | 26.027        | 1'42.808        | 255.3 | 15:52'21.907 |

|    |               |               |               |               |                 |              |              |
|----|---------------|---------------|---------------|---------------|-----------------|--------------|--------------|
| 9  | 31.507        | 22.657        | 23.243        | 26.279        | 1'43.686        | <b>257.1</b> | 15:02'35.595 |
| 10 | 31.462        | <b>22.872</b> | 23.871        | 29.784        | 1'47.989 P      | 252.3        | 15:04'23.584 |
| 11 | 10'03.006     | 23.294        | 23.964        | 26.034        | 11'16.298 P     | 251.7        | 15:15'39.882 |
| 12 | <b>30.992</b> | 22.449        | 22.924        | 25.982        | 1'42.347        | 256.5        | 15:17'22.229 |
| 13 | 31.101        | <b>22.378</b> | 23.065        | 26.182        | 1'42.726        | 255.3        | 15:19'04.955 |
| 14 | 31.271        | 22.588        | 24.059        | 32.311        | 1'50.229        | 253.5        | 15:20'55.184 |
| 15 | 31.300        | 22.723        | 23.082        | 28.772        | 1'45.877 P      | 254.7        | 15:22'41.061 |
| 16 | 12'39.896     | 25.046        | 23.982        | 27.385        | 13'56.309 P     | 159.8        | 15:36'37.370 |
| 17 | 33.352        | 29.419        | 28.178        | 32.041        | 2'02.990 C      | 170.1        | 15:38'40.360 |
| 18 | 6'56.564      | 29.501        | 25.507        | 28.034        | 8'19.606 P      | 161.9        | 15:46'59.966 |
| 19 | 31.209        | <b>22.480</b> | <b>22.839</b> | <b>25.771</b> | <b>1'42.299</b> | 253.5        | 15:48'42.265 |
| 20 | 34.571        | 25.086        | 23.893        | 26.946        | 1'50.496        | 196.7        | 15:50'32.761 |
| 21 | 31.672        | <b>22.306</b> | 23.320        | 26.372        | 1'43.670        | 248.8        | 15:52'16.431 |

| 10° 61 A. ZACCONE (1'42.370) |               |               |               |               |                 |              |              |
|------------------------------|---------------|---------------|---------------|---------------|-----------------|--------------|--------------|
| Lap                          | Seq. 1        | Seq. 2        | Seq. 3        | Seq. 4        | Lap Time        | km/h         | Local Time   |
| 1                            | 28.038        | 31.908        | 33.210        | 214.7         | 14:47'42.005    |              |              |
| 2                            | 48.659        | 23.828        | 24.052        | 26.647        | 2'03.186 P      | 248.8        | 14:49'45.191 |
| 3                            | 31.732        | 22.864        | 23.715        | 26.397        | 1'44.708        | 252.3        | 14:51'29.899 |
| 4                            | 31.572        | 22.811        | 23.567        | 26.256        | 1'44.206        | 252.3        | 14:53'14.105 |
| 5                            | 31.550        | 22.705        | 23.397        | 26.358        | 1'44.010        | 250.6        | 14:54'58.115 |
| 6                            | 31.640        | 22.623        | 24.026        | 30.543        | 1'48.832 P      | 251.7        | 14:56'46.947 |
| 7                            | 7'08.809      | 35.402        | 24.826        | 26.277        | 8'35.314 P      | 235.8        | 15:05'22.261 |
| 8                            | 31.336        | 22.554        | 22.969        | 28.365        | 1'45.224        | 252.9        | 15:07'07.485 |
| 9                            | 31.226        | 22.941        | 23.143        | <b>25.943</b> | 1'43.253        | 253.5        | 15:08'50.738 |
| 10                           | 31.023        | 26.789        | 24.110        | 27.118        | 1'49.040        | 252.9        | 15:10'39.778 |
| 11                           | 31.199        | 22.831        | 23.568        | 26.961        | 1'44.559        | <b>254.1</b> | 15:12'24.337 |
| 12                           | 31.109        | 23.113        | 23.376        | 26.206        | 1'43.764        | 253.5        | 15:14'08.101 |
| 13                           | 30.990        | <b>22.315</b> | <b>22.919</b> | 26.146        | <b>1'42.370</b> | 250.0        | 15:15'50.471 |
| 14                           | 31.271        | 23.103        | 24.346        | 29.456        | 1'48.176 P      | 250.6        | 15:17'38.647 |
| 15                           | 16'03.264     | 23.478        | 23.911        | 26.752        | 17'17.405 P     | 237.9        | 15:34'56.052 |
| 16                           | <b>30.929</b> |               |               |               | 9'30.030 P      | 250.0        | 15:44'26.082 |

| 11° 2 P. JACOBSEN (1'42.508) |               |               |               |               |                 |              |              |
|------------------------------|---------------|---------------|---------------|---------------|-----------------|--------------|--------------|
| Lap                          | Seq. 1        | Seq. 2        | Seq. 3        | Seq. 4        | Lap Time        | km/h         | Local Time   |
| 1                            | 37.250        | 32.542        | 26.842        | 28.604        | 235.8           | 14:48'13.377 |              |
| 2                            | 31.540        | 28.293        | 23.829        | 26.523        | 1'55.895        | 152.1        | 14:50'09.272 |
| 3                            | 31.316        | 22.422        | 23.239        | 26.035        | 1'43.012        | <b>260.2</b> | 14:53'36.074 |
| 4                            | 31.395        | 23.121        | 23.542        | 26.344        | 1'44.402        | 241.6        | 14:55'20.476 |
| 5                            | 31.264        | 22.562        | 23.205        | 26.031        | 1'43.062        | 258.4        | 14:57'03.538 |
| 6                            | 32.169        | 22.796        | 23.810        | 29.149        | 1'47.924 P      | 253.5        | 14:58'51.462 |
| 7                            | 5'23.814      | 23.423        | 24.303        | 26.573        | 6'38.113 P      | 251.7        | 15:05'29.575 |
| 8                            | 31.377        | 23.216        | 23.258        | 26.103        | 1'43.954        | 257.8        | 15:07'13.529 |
| 9                            | <b>31.149</b> | <b>22.421</b> | <b>22.983</b> | 25.955        | <b>1'42.508</b> | 258.4        | 15:08'56.037 |
| 10                           | 31.256        | 22.565        | 23.221        | 26.337        | 1'43.379        | 257.8        | 15:10'39.416 |
| 11                           | 31.415        | 22.645        | 23.701        | 26.217        | 1'43.978        | 255.9        | 15:12'23.394 |
| 12                           | 31.438        | 23.680        | 23.762        | 29.283        | 1'48.163 P      | 254.7        | 15:14'11.557 |
| 13                           | 5'51.606      | 23.556        | 24.278        | 26.456        | 7'05.896 P      | 237.4        | 15:21'17.453 |
| 14                           | 31.447        | 22.573        | 23.240        | 26.076        | 1'43.336        | 254.7        | 15:23'00.789 |
| 15                           | 31.346        | 22.459        | 23.247        | 26.421        | 1'43.473        | 256.5        | 15:24'44.262 |
| 16                           | 32.235        | 23.711        | 24.177        | 29.808        | 1'49.931 P      | 251.7        | 15:26'34.193 |
| 17                           | 9'06.714      | 28.308        | 24.318        | 33.932        | 10'33.272 C     | 242.2        | 15:37'07.465 |
| 18                           | 7'27.060      | 23.599        | 24.118        | 26.478        | 8'41.255 P      | 247.7        | 15:45'48.720 |
| 19                           | 31.520        | 22.443        | 23.214        | 25.815        | 1'42.990        | 253.5        | 15:47'31.710 |
| 20                           | 31.416        | 22.473        | 22.998        | 26.154        | 1'43.041        | 253.5        | 15:49'14.751 |
| 21                           | 31.428        | 26.669        | 23.633        | 26.130        | 1'47.860        | 254.7        | 15:51'02.611 |
| 22                           | 31.273        | 22.782        | 23.048        | <b>25.718</b> | 1'42.821        | 252.9        | 15:52'45.432 |

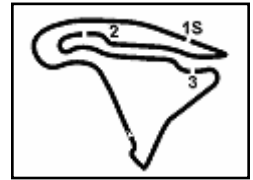
| 12° 87 L. ZANETTI (1'42.533) |           |        |        |        |             |              |              |
|------------------------------|-----------|--------|--------|--------|-------------|--------------|--------------|
| Lap                          | Seq. 1    | Seq. 2 | Seq. 3 | Seq. 4 | Lap Time    | km/h         | Local Time   |
| 1                            | 32.850    | 27.839 | 31.580 | 33.938 | 204.2       | 14:48'03.459 |              |
| 2                            | 31.726    | 26.465 | 35.794 | 31.301 | 2'06.410    | 247.7        | 14:50'09.869 |
| 3                            | 31.543    | 22.869 | 23.295 | 26.152 | 1'44.042    | 256.5        | 14:51'53.911 |
| 4                            | 31.419    | 22.583 | 23.174 | 26.076 | 1'43.376    | 257.8        | 14:53'37.287 |
| 5                            | 31.419    | 22.651 | 23.405 | 26.518 | 1'43.993    | 257.8        | 14:55'21.280 |
| 6                            | 31.584    | 22.997 | 23.524 | 26.147 | 1'44.252    | 257.1        | 14:57'05.532 |
| 7                            | 32.105    | 22.720 | 23.243 | 30.191 | 1'48.259 P  | 255.3        | 14:58'53.791 |
| 8                            | 17'02.169 | 23.082 | 24.338 | 27.806 | 18'17.395 P | 252.3        | 15:17'11.186 |
| 9                            | 31.787    | 22.698 | 24.252 | 26.576 | 1'45.313    | 253.5        | 15:18'56.499 |
| 10                           | 31.699    | 22.959 | 23.329 | 26.300 | 1'44.287    | 255.3        | 15:20'40.786 |
| 11                           | 32.789    | 23.470 | 24.367 | 29.938 | 1'50.564 P  | 248.3        | 15:22'31.350 |
| 12                           | 7'24.342  | 28.821 | 29.356 | 31.042 | 8'53.561 P  | 242.7        | 15:31'24.911 |
| 13                           | 31.732    | 22.591 | 23.056 | 26.193 | 1'43.572    | 252.3        | 15:33'08.483 |

P = Pits In/Out - C = Lap-Time Cancelled

These data/results cannot be reproduced, stored and/or transmitted in whole or in part by any manner of electronic, mechanical, photocopying, recording, broadcasting or otherwise now known or herein after developed without the previous express consent by the copyright owner, except for reproduction in daily press and regular printed publications on sale to the public within 60 days of the event related to those data/results and always provided that copyright symbol appears together as follows below.

© DORNA WSBK ORGANIZATION Srl 2016





Magny-Cours 4.411 m

### French Round, 30 September 1-2 October 2016

#### World Supersport - Chronological Analysis Free Practice 2nd Session

3 / 7

|    |               |               |               |               |                 |              |              |
|----|---------------|---------------|---------------|---------------|-----------------|--------------|--------------|
| 13 | 32.473        | 23.223        | 24.049        | 27.362        | 1'47.107        | 249.4        | 15:34'55.590 |
| 14 | 31.259        | 22.593        | 23.121        | 26.045        | 1'43.018        | 256.5        | 15:36'38.608 |
| 15 | 32.901        | 26.677        | 25.890        | 29.469        | 1'54.937 C      | 197.4        | 15:38'33.545 |
| 16 | 5'17.998      | 27.867        | 30.917        | 27.477        | 6'44.259 P      | 248.3        | 15:45'17.804 |
| 17 | 31.322        | 22.596        | <b>22.862</b> | <b>25.753</b> | <b>1'42.533</b> | 255.3        | 15:47'00.337 |
| 18 | <b>31.150</b> | <b>22.582</b> | 22.930        | 25.941        | 1'42.603        | 258.4        | 15:48'42.940 |
| 19 | 33.331        | 26.824        | 26.132        | 26.065        | 1'52.352        | 220.4        | 15:50'35.292 |
| 20 | 31.178        | 22.751        | 22.963        | 26.133        | 1'43.025        | <b>260.2</b> | 15:52'18.317 |

**13° 64 F. CARICASULO (1'42.554)**

| Lap | Seq. 1        | Seq. 2        | Seq. 3        | Seq. 4        | Lap Time        | km/h         | Local Time   |
|-----|---------------|---------------|---------------|---------------|-----------------|--------------|--------------|
|     |               | 28.905        | 25.145        | 27.771        |                 | 217.7        | 14:48'08.239 |
| 1   | 32.419        | 23.237        | 25.117        | 31.963        | 1'52.736        | 250.0        | 14:50'00.975 |
| 2   | 32.263        | 23.024        | 26.865        | 26.486        | 1'48.638        | 252.9        | 14:51'49.613 |
| 3   | 31.221        | 22.679        | 23.371        | 27.841        | 1'45.112        | 251.2        | 14:53'34.725 |
| 4   | 31.253        | 22.944        | 23.228        | 26.466        | 1'43.891        | 248.3        | 14:55'18.616 |
| 5   | 31.598        | 22.605        | 23.186        | 26.543        | 1'43.932        | 252.9        | 14:57'02.548 |
| 6   | 33.494        | 22.812        | 23.642        | 27.950        | 1'47.898        | 248.3        | 14:58'50.446 |
| 7   | 31.531        | 22.630        | 23.154        | 25.997        | 1'43.312        | 252.3        | 15:00'33.758 |
| 8   | 31.343        | 22.570        | 23.310        | 30.037        | 1'47.260 P      | <b>253.5</b> | 15:02'21.018 |
| 9   | 8'08.785      | 23.825        | 23.830        | 26.361        | 9'22.801 P      | 249.4        | 15:11'43.819 |
| 10  | 31.499        | 22.543        | 23.114        | 26.192        | 1'43.348        | 252.3        | 15:13'27.167 |
| 11  | 31.298        | 22.449        | 23.216        | 26.030        | 1'42.993        | 252.3        | 15:15'10.160 |
| 12  | 31.209        | 22.738        | 23.177        | 26.065        | 1'43.189        | 251.2        | 15:16'53.349 |
| 13  | 31.231        | 22.824        | 36.842        | 33.820        | 2'04.717        | 252.3        | 15:18'58.066 |
| 14  | 31.472        | <b>22.411</b> | 23.012        | 26.021        | 1'42.916        | <b>253.5</b> | 15:20'40.982 |
| 15  | 33.483        | 23.903        | 24.034        | 30.605        | 1'52.025 P      | 214.3        | 15:22'33.007 |
| 16  | 13'08.872     | 28.534        | 24.124        | 34.980        | 14'36.510 C     | 247.7        | 15:37'09.517 |
| 17  | 6'57.261      | 23.070        | 23.942        | 32.448        | 8'16.721 P      | 243.8        | 15:45'26.238 |
| 18  | 31.473        | 22.606        | 23.193        | 25.976        | 1'43.248        | <b>253.5</b> | 15:47'09.486 |
| 19  | 31.178        | 22.543        | 23.006        | <b>25.827</b> | <b>1'42.554</b> | 251.7        | 15:48'52.040 |
| 20  | <b>31.078</b> | 22.648        | <b>22.955</b> | 26.057        | 1'42.738        | 249.4        | 15:50'34.778 |
| 21  | 31.394        | 22.524        | 23.276        | 26.167        | 1'43.361        | 250.0        | 15:52'18.139 |

**14° 78 H. OKUBO (1'42.562)**

| Lap | Seq. 1        | Seq. 2        | Seq. 3        | Seq. 4        | Lap Time        | km/h         | Local Time   |
|-----|---------------|---------------|---------------|---------------|-----------------|--------------|--------------|
|     |               | 23.717        | 24.105        | 26.731        |                 | 239.5        | 14:46'53.393 |
| 1   | 31.612        | 22.863        | 23.568        | 26.330        | 1'44.373        | 250.0        | 14:48'37.766 |
| 2   | 31.729        | 32.647        | 23.627        | 26.348        | 1'54.351        | 249.4        | 14:50'32.117 |
| 3   | 31.657        | 22.782        | 23.839        | 26.620        | 1'44.898        | 253.5        | 14:52'17.015 |
| 4   | 31.495        | 32.298        | 24.089        | 32.818        | 2'00.700 P      | 255.3        | 14:54'17.715 |
| 5   | 5'33.582      | 25.366        | 26.971        | 26.984        | 6'52.903 P      | 241.1        | 15:01'10.618 |
| 6   | 31.307        | 22.553        | 23.125        | 25.897        | 1'42.882        | 252.3        | 15:02'53.500 |
| 7   | 31.365        | 22.922        | 23.118        | 26.072        | 1'43.477        | 252.9        | 15:04'36.977 |
| 8   | 32.649        | 30.443        | 24.237        | 32.377        | 1'59.706 P      | 251.7        | 15:06'36.683 |
| 9   | 7'31.736      | 23.864        | 23.559        | 26.443        | 8'45.602 P      | 238.4        | 15:15'22.285 |
| 10  | 32.782        | 23.312        | 23.931        | 27.905        | 1'47.930        | 244.3        | 15:17'10.215 |
| 11  | 31.972        | 23.297        | 24.545        | 26.796        | 1'46.610        | 248.3        | 15:18'56.825 |
| 12  | 31.415        | 22.722        | 23.234        | 25.913        | 1'43.284        | <b>253.5</b> | 15:20'40.109 |
| 13  | 31.564        | 28.207        | 23.717        | 26.537        | 1'50.025        | 249.4        | 15:22'30.134 |
| 14  | 32.295        | 23.406        | 23.891        | 29.732        | 1'49.324 P      | 248.8        | 15:24'19.458 |
| 15  | 9'12.311      | 23.148        | 23.409        | 42.499        | 10'41.367 P     | 237.4        | 15:35'00.825 |
| 16  | 33.603        | 25.594        | 24.672        | 45.491        | 2'09.360 C      | 238.9        | 15:37'10.185 |
| 17  | 6'23.543      | 22.959        | 23.380        | 26.323        | 7'36.205 P      | 248.3        | 15:44'46.390 |
| 18  | <b>31.202</b> | 22.594        | <b>23.051</b> | <b>25.715</b> | <b>1'42.562</b> | 251.7        | 15:46'28.952 |
| 19  | 31.261        | 22.667        | 23.328        | 26.906        | 1'44.162 C      | 250.0        | 15:48'13.114 |
| 20  | 31.221        | 23.311        | 24.462        | 29.545        | 1'48.539        | 251.2        | 15:50'01.653 |
| 21  | 31.241        | <b>22.498</b> | 23.257        | 26.235        | 1'43.231        | 251.2        | 15:51'44.884 |

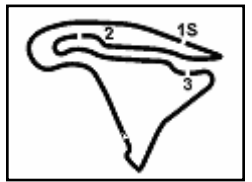
**15° 71 C. BERGMAN (1'42.599)**

| Lap | Seq. 1        | Seq. 2 | Seq. 3        | Seq. 4 | Lap Time    | km/h         | Local Time   |
|-----|---------------|--------|---------------|--------|-------------|--------------|--------------|
|     |               | 24.625 | 24.415        | 27.420 |             | 231.8        | 14:47'05.660 |
| 1   | 31.907        | 23.022 | 23.358        | 26.137 | 1'44.424    | 247.1        | 14:48'50.084 |
| 2   | 31.638        | 23.041 | 23.392        | 26.352 | 1'44.423    | 247.7        | 14:50'34.507 |
| 3   | 31.322        | 22.600 | 23.139        | 25.970 | 1'43.031    | 252.9        | 14:52'17.538 |
| 4   | 31.417        | 22.681 | 23.288        | 28.844 | 1'46.230 P  | <b>255.9</b> | 14:54'03.768 |
| 5   | 4'06.913      | 24.637 | 24.015        | 27.920 | 5'23.485 P  | 248.8        | 14:59'27.253 |
| 6   | <b>31.183</b> | 22.726 | 23.009        | 26.098 | 1'43.016    | 250.6        | 15:01'10.269 |
| 7   | 31.246        | 22.654 | <b>22.902</b> | 26.017 | 1'42.819    | 248.3        | 15:02'53.088 |
| 8   | 31.253        | 22.435 | 23.009        | 25.941 | 1'42.638    | 250.6        | 15:04'35.726 |
| 9   | 31.315        | 23.292 | 23.771        | 27.457 | 1'45.835    | 252.3        | 15:06'21.561 |
| 10  | 31.394        | 22.526 | 23.204        | 26.269 | 1'43.393    | 251.2        | 15:08'04.954 |
| 11  | 31.564        | 23.275 | 24.155        | 29.246 | 1'48.240 P  | 250.6        | 15:09'53.194 |
| 12  | 9'09.623      | 23.542 | 23.500        | 26.350 | 10'23.015 P | 245.5        | 15:20'16.209 |

P = Pits In/Out - C = Lap-Time Cancelled

These data/results cannot be reproduced, stored and/or transmitted in whole or in part by any manner of electronic, mechanical, photocopying, recording, broadcasting or otherwise now known or herein after developed without the previous express consent by the copyright owner, except for reproduction in daily press and regular printed publications on sale to the public within 60 days of the event related to those data/results and always provided that copyright symbol appears together as follows below.

© DORNA WSBK ORGANIZATION Srl 2016



## French Round, 30 September 1-2 October 2016

### World Supersport - Chronological Analysis Free Practice 2nd Session

Magny-Cours 4.411 m

4 / 7

|    |               |               |               |               |                 |              |              |
|----|---------------|---------------|---------------|---------------|-----------------|--------------|--------------|
| 5  | 31.815        | 22.598        | 23.664        | 26.271        | 1'44.348        | 252.3        | 14:56'08.155 |
| 6  | 33.732        | 24.510        | 26.641        | 36.332        | 2'01.215 P      | 230.3        | 14:58'09.370 |
| 7  | 8'48.979      | 25.255        | 25.890        | 27.267        | 10'07.391 P     | 230.3        | 15:08'16.761 |
| 8  | 31.621        | 22.768        | 23.757        | 28.253        | 1'46.399        | 255.9        | 15:10'03.160 |
| 9  | 31.495        | 22.484        | 23.298        | 26.238        | 1'43.515        | 255.3        | 15:11'46.675 |
| 10 | 31.511        | 22.639        | 23.335        | 26.159        | 1'43.644        | 252.9        | 15:13'30.319 |
| 11 | 31.554        | 22.673        | 23.281        | 26.155        | 1'43.663        | 254.1        | 15:15'13.982 |
| 12 | 34.714        | 23.525        | 24.335        | 32.384        | 1'54.958 P      | 240.5        | 15:17'08.940 |
| 13 | 10'22.567     | 29.579        | 24.851        | 26.994        | 1'43.991 P      | 224.1        | 15:28'52.931 |
| 14 | 31.671        | 22.509        | 23.308        | 26.146        | 1'43.634        | 253.5        | 15:30'36.565 |
| 15 | 31.546        | 22.564        | 23.450        | 26.142        | 1'43.702        | 253.5        | 15:32'20.267 |
| 16 | 35.673        | 25.144        | 23.689        | 35.961        | 2'00.467 P      | 227.8        | 15:34'20.734 |
| 17 | 9'13.554      | 23.050        | 23.462        | 26.367        | 1'02'6.433 P    | 250.0        | 15:44'47.167 |
| 18 | <b>31.273</b> | 22.524        | <b>23.190</b> | 26.299        | 1'43.286 C      | 255.9        | 15:46'30.453 |
| 19 | 32.016        | 27.553        | 25.681        | 27.651        | 1'52.901        | 255.9        | 15:48'23.354 |
| 20 | 31.368        | <b>22.399</b> | 23.318        | <b>25.928</b> | <b>1'43.013</b> | 256.5        | 15:50'06.367 |
| 21 | 31.355        | 26.885        | 26.255        | 39.206        | 2'03.701 P      | <b>257.8</b> | 15:52'10.068 |

| 23                                 | 31.508 | 22.773 | 23.750 | 26.316 | 1'44.347 | 246.0 | 15:51'44.490 |
|------------------------------------|--------|--------|--------|--------|----------|-------|--------------|
| <b>21° 26 G. ANTIGA (1'43.340)</b> |        |        |        |        |          |       |              |
| Lap                                | Seq. 1 | Seq. 2 | Seq. 3 | Seq. 4 | Lap Time | km/h  | Local Time   |

|    |               |               |               |               |                 |              |              |
|----|---------------|---------------|---------------|---------------|-----------------|--------------|--------------|
| 1  | 57.245        | 25.025        | 24.219        | 26.422        | 2'12.911 P      | 216.4        | 14:48'31.001 |
| 2  | 31.720        | 22.922        | 23.400        | 26.105        | 1'44.147        | 250.6        | 14:50'15.148 |
| 3  | 31.527        | 22.710        | 23.439        | 26.396        | 1'44.072        | 250.0        | 14:51'59.220 |
| 4  | 31.679        | 22.706        | 23.502        | 26.607        | 1'44.494        | 249.4        | 14:53'43.714 |
| 5  | 32.073        | 22.930        | 24.291        | 32.743        | 1'52.037 C      | 246.6        | 14:55'35.751 |
| 6  | 2'23.683      | 22.841        | 23.790        | 28.114        | 3'38.428 C      | 249.4        | 14:59'14.179 |
| 7  | 31.707        | 22.730        | 23.428        | 26.074        | 1'43.939        | 248.8        | 15:00'58.118 |
| 8  | 31.839        | 24.427        | 26.007        | 29.812        | 1'52.085 C      | 246.6        | 15:02'50.203 |
| 9  | 1'25.426      | 23.353        | 24.268        | 26.631        | 2'39.678 P      | 249.4        | 15:05'29.881 |
| 10 | 32.140        | 22.876        | 23.494        | 26.015        | 1'44.525        | 251.2        | 15:07'14.406 |
| 11 | 31.550        | 23.600        | 25.713        | 30.799        | 1'51.662 C      | 251.7        | 15:09'06.068 |
| 12 | 2'18.071      | 23.870        | 23.609        | 26.669        | 3'32.219 P      | 249.4        | 15:12'38.287 |
| 13 | 31.742        | 22.758        | 23.994        | 26.289        | 1'44.783        | 248.8        | 15:14'23.070 |
| 14 | 32.945        | 24.937        | 24.290        | 29.240        | 1'51.412 P      | 234.3        | 15:16'14.482 |
| 15 | 4'22.286      | 23.770        | 23.959        | 32.463        | 5'42.478 P      | 218.6        | 15:21'56.960 |
| 16 | 31.411        | 22.846        | <b>23.098</b> | 25.985        | <b>1'43.340</b> | <b>252.9</b> | 15:23'40.300 |
| 17 | <b>31.391</b> | 22.937        | 23.601        | 26.378        | 1'44.307        | <b>252.9</b> | 15:25'24.607 |
| 18 | 33.343        | 24.444        | 24.566        | 30.331        | 1'52.684 P      | 215.1        | 15:27'17.291 |
| 19 | 2'07.182      | 24.236        | 23.617        | 26.273        | 3'21.308 P      |              | 15:30'38.599 |
| 20 | 31.670        | <b>22.677</b> | 23.663        | 26.143        | 1'44.153 P      | 248.3        | 15:32'22.752 |
| 21 | 32.140        | <b>23.778</b> | 25.701        | 30.636        | 1'52.255 C      | 246.6        | 15:34'15.007 |
| 22 | 9'47.943      | 25.528        | 24.320        | 26.497        | 11'04.288 P     |              | 15:45'19.295 |
| 23 | 31.562        | 22.684        | 23.318        | <b>25.815</b> | 1'43.379        | 250.6        | 15:47'02.674 |
| 24 | 31.664        | 22.778        | 23.375        | 30.535        | 1'48.352        | 247.1        | 15:48'51.026 |
| 25 | 31.674        | 23.293        | 23.542        | 26.128        | 1'44.637        | 251.2        | 15:50'35.663 |
| 26 | 31.423        | 22.746        | 23.444        | 26.704        | 1'44.297        | <b>252.9</b> | 15:52'19.960 |

| <b>22° 23 C. TANGRE (1'43.363)</b> |        |        |        |        |          |      |            |
|------------------------------------|--------|--------|--------|--------|----------|------|------------|
| Lap                                | Seq. 1 | Seq. 2 | Seq. 3 | Seq. 4 | Lap Time | km/h | Local Time |

|    |               |               |               |               |                 |              |              |
|----|---------------|---------------|---------------|---------------|-----------------|--------------|--------------|
| 1  | 32.295        | 24.872        | 24.686        | 26.840        | 233.3           | 14:46'55.212 |              |
| 2  | 32.022        | 22.872        | 23.528        | 26.371        | 1'45.471        | 245.5        | 14:48'40.683 |
| 3  | 31.892        | 22.942        | 23.374        | 26.435        | 1'44.703        | 244.9        | 14:50'25.386 |
| 4  | 34.091        | 28.205        | 23.534        | 27.569        | 1'53.999        | 202.6        | 14:54'03.495 |
| 5  | 31.798        | 22.919        | 23.438        | 26.847        | 1'45.002        | 247.1        | 14:55'48.497 |
| 6  | 32.090        | 23.010        | 24.930        | 28.504        | 1'48.534        | 244.9        | 14:57'37.031 |
| 7  | 32.052        | 22.947        | 23.451        | 26.696        | 1'45.146        | 246.0        | 14:59'22.177 |
| 8  | 32.831        | 23.059        | 23.996        | 29.529        | 1'49.706 P      | 243.8        | 15:01'11.883 |
| 9  | 9'55.910      | 24.506        | 25.469        | 26.834        | 11'12.719 P     | 240.5        | 15:12'24.602 |
| 10 | 31.629        | 23.446        | 23.250        | 26.450        | 1'44.775        | 247.1        | 15:14'09.377 |
| 11 | 31.767        | 22.749        | 23.131        | 26.285        | 1'43.932        | 245.5        | 15:15'53.309 |
| 12 | 31.664        | 22.824        | 23.200        | 26.164        | 1'43.852        | 245.5        | 15:17'37.161 |
| 13 | 31.753        | 23.489        | 31.435        | 38.223        | 2'04.900 P      | 244.3        | 15:19'42.061 |
| 14 | 58.526        | 25.586        | 23.710        | 26.485        | 2'14.307 P      | 243.2        | 15:21'56.368 |
| 15 | <b>31.575</b> | 22.619        | 23.056        | 26.113        | <b>1'43.363</b> | 247.7        | 15:23'39.731 |
| 16 | 32.049        | 23.190        | 23.508        | 29.699        | 1'48.446 P      | 247.1        | 15:25'28.177 |
| 17 | 8'14.616      | 23.919        | 23.478        | 27.307        | 9'29.320 P      | 235.3        | 15:34'57.497 |
| 18 | 31.582        | 22.949        | 23.644        | 26.382        | 1'44.557        | <b>250.6</b> | 15:36'42.054 |
| 19 | 31.734        | 29.087        | 27.844        | 35.649        | 2'04.314 C      | 241.1        | 15:38'46.368 |
| 20 | 5'48.530      | 23.458        | 24.012        | 26.514        | 7'02.514 P      | 242.7        | 15:45'48.882 |
| 21 | 31.631        | 22.712        | 23.094        | 26.234        | 1'43.671        | 247.7        | 15:47'32.553 |
| 22 | 31.747        | 22.728        | <b>22.973</b> | <b>26.088</b> | 1'43.536        | 246.6        | 15:49'16.089 |
| 23 | 31.649        | <b>22.564</b> | 25.449        | 27.117        | 1'46.779        | 244.3        | 15:51'02.868 |
| 24 | 31.965        | 22.657        | 23.120        | 26.461        | 1'44.203        | 242.2        | 15:52'47.071 |

| <b>23° 44 R. ROLFO (1'43.415)</b> |        |        |        |        |          |      |            |
|-----------------------------------|--------|--------|--------|--------|----------|------|------------|
| Lap                               | Seq. 1 | Seq. 2 | Seq. 3 | Seq. 4 | Lap Time | km/h | Local Time |

|    |           |        |        |        |             |              |              |
|----|-----------|--------|--------|--------|-------------|--------------|--------------|
| 1  | 38.132    | 28.956 | 30.754 | 37.706 | 223.6       | 14:47'35.346 |              |
| 2  | 31.895    | 25.176 | 23.967 | 26.578 | 1'53.853    | 249.4        | 14:49'29.199 |
| 3  | 31.659    | 23.119 | 23.352 | 26.313 | 1'44.679    | 249.4        | 14:51'13.878 |
| 4  | 31.694    | 22.821 | 23.380 | 26.187 | 1'44.407    | 253.5        | 14:52'57.925 |
| 5  | 31.694    | 22.909 | 23.272 | 26.263 | 1'44.138    | 251.7        | 14:54'42.063 |
| 6  | 31.839    | 22.908 | 23.340 | 26.454 | 1'44.541    | 252.3        | 14:56'26.604 |
| 7  | 31.903    | 22.940 | 23.446 | 26.251 | 1'44.542    | 251.2        | 14:58'11.146 |
| 8  | 34.897    | 23.862 | 23.903 | 29.176 | 1'51.838 P  | 222.7        | 15:00'02.984 |
| 9  | 14'50.825 | 24.559 | 27.206 | 26.747 | 16'09.337 P | 237.9        | 15:16'12.321 |
| 10 | 32.019    | 23.123 | 23.451 | 26.536 | 1'45.128    | 251.7        | 15:17'57.449 |
| 11 | 31.449    | 22.888 | 23.182 | 26.543 | 1'44.062    | <b>254.7</b> | 15:19'41.511 |
| 12 | 32.162    | 27.554 | 30.219 | 27.815 | 1'57.750    | 252.3        | 15:21'39.261 |

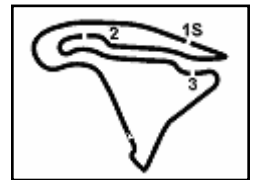
P = Pits In/Out - C = Lap-Time Cancelled

These data/results cannot be reproduced, stored and/or transmitted in whole or in part by any manner of electronic, mechanical, photocopying, recording, broadcasting or otherwise now known or herein after developed without the previous express consent by the copyright owner, except for reproduction in daily press and regular printed publications on sale to the public within 60 days of the event related to those data/results and always provided that copyright symbol appears together as follows below.

© DORNA WSBK ORGANIZATION Srl 2016







## French Round, 30 September 1-2 October 2016

### World Supersport - Chronological Analysis Free Practice 2nd Session

|    |           |        |        |        |             |       |              |    |          |        |        |        |            |       |              |
|----|-----------|--------|--------|--------|-------------|-------|--------------|----|----------|--------|--------|--------|------------|-------|--------------|
| 4  | 31.948    | 31.063 | 30.846 | 26.741 | 2'00.598    | 248.3 | 15:00'00.978 | 4  | 1'42.381 | 24.775 | 25.160 | 27.675 | 2'59.991 C | 237.4 | 14:55'15.945 |
| 5  | 32.408    | 25.660 | 23.659 | 29.753 | 1'51.480 P  | 249.4 | 15:01'52.458 | 5  | 32.524   | 23.060 | 23.731 | 26.981 | 1'46.296   | 246.0 | 14:57'02.241 |
| 6  | 9'17.064  | 25.074 | 23.619 | 26.675 | 10'32.432 P | 176.2 | 15:12'24.890 | 6  | 31.970   | 22.773 | 24.216 | 29.209 | 1'48.168 P | 248.3 | 14:58'50.409 |
| 7  | 31.313    | 24.982 | 24.643 | 32.601 | 1'53.539 C  | 246.6 | 15:14'18.429 | 7  | 7'22.802 | 24.311 | 24.129 | 27.287 | 8'38.529 P | 235.8 | 15:07'28.938 |
| 8  | 31.690    | 22.990 | 23.561 | 26.316 | 1'44.557    | 251.2 | 15:16'02.986 | 8  | 32.446   | 23.501 | 25.073 | 34.278 | 1'55.298 C | 246.6 | 15:09'24.236 |
| 9  | 40.269    | 24.668 | 23.401 | 26.577 | 1'54.915    |       | 15:17'57.901 | 9  | 31.782   | 22.900 | 23.510 | 26.717 | 1'44.909   | 250.0 | 15:11'09.145 |
| 10 | 31.560    | 22.949 | 23.444 | 26.442 | 1'44.395    | 252.3 | 15:19'42.296 | 10 | 32.008   | 22.757 | 23.525 | 26.529 | 1'44.819   | 248.3 | 15:12'53.964 |
| 11 | 32.017    | 23.598 | 24.082 | 28.222 | 7'09.200    | 235.8 | 15:20'51.496 | 11 | 31.813   | 22.980 | 25.266 | 30.491 | 1'50.380 P | 248.8 | 15:14'44.344 |
| 12 | 31.809    | 23.034 | 23.488 | 26.695 | 1'45.026    | 248.8 | 15:23'36.522 | 12 | 2'35.275 | 24.168 | 25.678 | 28.779 | 3'53.900 P | 244.9 | 15:18'38.244 |
| 13 | 32.318    | 23.586 | 23.747 | 29.591 | 1'49.242 P  | 243.2 | 15:30'25.764 | 13 | 32.487   | 23.127 | 23.871 | 26.843 | 1'46.328   | 247.7 | 15:20'24.572 |
| 14 | 13'50.698 | 23.923 | 23.909 | 26.405 | 15'04.935 P | 239.5 | 15:45'30.699 | 14 | 32.112   | 22.980 | 24.916 | 32.161 | 1'52.169 P | 247.7 | 15:22'16.741 |
| 15 | 31.872    | 23.046 | 23.606 | 26.741 | 1'45.265    | 244.9 | 15:47'15.964 | 15 | 6'32.568 | 23.843 | 25.175 | 28.668 | 7'50.254 P | 235.8 | 15:30'06.995 |
| 16 | 32.221    | 23.029 | 23.675 | 26.421 | 1'45.346    | 243.2 | 15:49'01.310 | 16 | 32.145   | 23.443 | 24.349 | 26.661 | 1'46.598   | 246.6 | 15:31'53.593 |
| 17 | 38.521    | 29.480 | 27.507 | 26.515 | 2'02.023    | 164.4 | 15:51'03.333 | 17 | 32.022   | 22.995 | 23.758 | 29.847 | 1'48.622 C | 246.0 | 15:33'42.215 |
| 18 | 31.825    | 23.147 | 23.721 | 26.665 | 1'45.358    | 247.1 | 15:52'48.691 | 18 | 31.944   | 22.835 | 23.391 | 26.595 | 1'44.765   | 246.6 | 15:35'26.980 |
| 19 |           |        |        |        |             |       |              | 19 | 31.953   | 26.011 | 24.585 | 44.144 | 2'06.693 C | 235.3 | 15:37'33.673 |
| 20 |           |        |        |        |             |       |              | 20 | 7'05.666 | 24.469 | 25.406 | 28.220 | 8'23.761 P | 244.9 | 15:45'57.434 |
| 21 |           |        |        |        |             |       |              | 21 | 32.463   | 22.937 | 24.805 | 27.927 | 1'48.132   | 243.8 | 15:47'45.566 |
| 22 |           |        |        |        |             |       |              | 22 | 33.059   | 25.937 | 27.043 | 35.617 | 2'01.656 P | 206.5 | 15:49'47.222 |

#### 30° 38 H. SOOMER (1'44.478)

| Lap | Seq. 1    | Seq. 2 | Seq. 3 | Seq. 4 | Lap Time    | km/h  | Local Time   |
|-----|-----------|--------|--------|--------|-------------|-------|--------------|
| 1   |           | 23.568 | 24.237 | 26.587 |             | 239.5 | 14:49'25.976 |
| 2   | 32.139    | 23.000 | 23.398 | 26.104 | 1'44.641    | 246.6 | 14:51'10.617 |
| 3   | 31.846    | 22.918 | 23.476 | 26.238 | 1'44.478    | 250.6 | 14:52'55.095 |
| 4   | 31.681    | 23.372 | 23.366 | 26.475 | 1'44.894    | 249.4 | 14:54'39.989 |
| 5   | 32.588    | 22.994 | 24.080 | 30.528 | 1'50.190 P  | 248.3 | 14:56'30.179 |
| 6   | 10'30.381 | 23.596 | 24.960 | 26.723 | 11'45.660 P | 247.1 | 15:08'15.839 |
| 7   | 31.858    | 23.245 | 23.700 | 26.395 | 1'45.198    | 250.6 | 15:10'01.037 |
| 8   | 31.964    | 22.905 | 23.642 | 26.814 | 1'45.325    | 251.7 | 15:11'46.362 |
| 9   | 31.854    | 22.952 | 23.464 | 26.282 | 1'44.552    | 247.7 | 15:13'30.914 |
| 10  | 31.790    | 23.047 | 23.511 | 26.417 | 1'44.765    | 252.9 | 15:15'15.679 |
| 11  | 31.909    | 22.888 | 23.695 | 26.503 | 1'44.995    | 249.4 | 15:17'00.674 |
| 12  | 31.841    | 22.872 | 24.210 | 30.442 | 1'49.365 P  | 250.6 | 15:18'50.039 |
| 13  | 15'17.468 | 23.663 | 23.932 | 27.066 | 16'32.129 P | 243.8 | 15:35'22.168 |
| 14  | 31.791    | 24.029 | 24.466 | 32.750 | 1'53.036 C  | 248.3 | 15:37'15.204 |
| 15  | 6'47.690  | 23.590 | 25.146 | 27.336 | 8'03.762 P  | 242.2 | 15:45'18.966 |
| 16  | 31.800    | 23.551 | 23.648 | 26.478 | 1'45.477    | 254.7 | 15:47'04.443 |
| 17  | 31.641    | 23.189 | 23.471 | 26.687 | 1'44.988    | 250.0 | 15:48'49.431 |
| 18  | 31.629    | 22.813 | 23.923 | 26.810 | 1'45.175    | 247.7 | 15:50'34.606 |
| 19  | 31.610    | 23.330 | 23.491 | 26.662 | 1'45.093    | 247.1 | 15:52'19.699 |

#### 31° 183 P. POLESSO (1'44.597)

| Lap | Seq. 1   | Seq. 2 | Seq. 3 | Seq. 4 | Lap Time   | km/h  | Local Time   |
|-----|----------|--------|--------|--------|------------|-------|--------------|
| 1   |          |        |        |        |            |       | 14:47'33.771 |
| 2   | 54.463   | 25.363 | 26.729 | 27.670 | 2'14.225 P | 228.8 | 14:49'47.996 |
| 3   | 32.715   | 23.734 | 23.938 | 26.801 | 1'47.188   | 239.5 | 14:51'35.184 |
| 4   | 32.387   | 23.297 | 24.115 | 26.923 | 1'46.722   | 243.2 | 14:53'21.906 |
| 5   | 32.421   | 23.271 | 23.861 | 26.912 | 1'46.465   | 239.5 | 14:55'08.371 |
| 6   | 32.556   | 23.317 | 23.961 | 26.595 | 1'46.429   | 239.5 | 14:56'54.800 |
| 7   | 32.363   | 23.148 | 23.722 | 26.645 | 1'45.878   | 241.6 | 14:58'40.678 |
| 8   | 36.386   | 29.596 | 29.883 | 33.861 | 2'09.726 P | 216.9 | 15:00'50.404 |
| 9   | 4'41.134 | 25.698 | 28.191 | 30.260 | 6'05.283 P | 184.6 | 15:06'55.687 |
| 10  | 32.416   | 23.347 | 23.647 | 26.966 | 1'46.376   | 244.3 | 15:08'42.063 |
| 11  | 32.290   | 23.811 | 26.341 | 26.901 | 1'49.343   | 242.7 | 15:10'31.406 |
| 12  | 31.979   | 23.047 | 23.594 | 26.450 | 1'45.070   | 245.5 | 15:12'16.476 |
| 13  | 31.993   | 23.578 | 26.568 | 34.091 | 1'56.230 P | 244.3 | 15:14'12.706 |
| 14  | 4'06.213 | 24.474 | 25.316 | 29.526 | 5'25.529 C | 230.8 | 15:19'38.235 |
| 15  | 32.862   | 23.323 | 23.524 | 26.527 | 1'46.236   | 246.0 | 15:21'24.471 |
| 16  | 32.089   | 23.128 | 23.583 | 26.521 | 1'45.321   | 243.2 | 15:23'09.792 |
| 17  | 32.181   | 23.335 | 23.656 | 31.171 | 1'50.343 P | 242.7 | 15:25'00.135 |
| 18  | 2'31.101 | 32.497 | 25.295 | 27.861 | 3'56.754 P | 165.1 | 15:28'56.889 |
| 19  | 32.440   | 23.030 | 23.737 | 26.503 | 1'45.710   | 242.7 | 15:30'42.599 |
| 20  | 31.950   | 23.094 | 23.649 | 26.488 | 1'45.181   | 243.2 | 15:32'27.780 |
| 21  | 31.884   | 23.639 | 23.700 | 26.814 | 1'46.037   | 243.8 | 15:34'13.817 |
| 22  | 32.023   | 24.575 | 28.929 | 31.978 | 1'57.505 P | 242.2 | 15:36'11.322 |
| 23  | 8'01.446 | 28.278 | 23.811 | 26.934 | 9'20.469 P | 191.5 | 15:45'31.791 |
| 24  | 32.062   | 23.040 | 23.508 | 26.429 | 1'45.039   | 245.5 | 15:47'16.830 |
| 25  | 31.862   | 23.268 | 23.596 | 26.377 | 1'45.103 C | 244.3 | 15:49'01.933 |
| 26  | 31.912   | 22.822 | 23.762 | 26.405 | 1'44.901   | 241.1 | 15:50'46.834 |
| 27  | 31.912   | 22.880 | 23.276 | 26.529 | 1'44.597   | 241.6 | 15:52'31.431 |

#### 32° 83 L. EPIS (1'44.765)

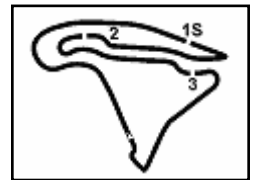
| Lap | Seq. 1 | Seq. 2 | Seq. 3 | Seq. 4 | Lap Time   | km/h  | Local Time   |
|-----|--------|--------|--------|--------|------------|-------|--------------|
| 1   |        | 23.605 | 24.671 | 26.975 |            | 244.9 | 14:46'52.488 |
| 2   | 32.542 | 23.319 | 23.729 | 26.794 | 1'46.384   | 247.1 | 14:48'38.872 |
| 3   | 31.842 | 23.351 | 23.591 | 26.764 | 1'45.548   | 250.0 | 14:50'24.420 |
| 4   | 33.490 | 23.486 | 24.507 | 30.051 | 1'51.534 P | 248.8 | 14:52'15.954 |

P = Pits In/Out - C = Lap-Time Cancelled

These data/results cannot be reproduced, stored and/or transmitted in whole or in part by any manner of electronic, mechanical, photocopying, recording, broadcasting or otherwise now known or herein after developed without the previous express consent by the copyright owner, except for reproduction in daily press and regular printed publications on sale to the public within 60 days of the event related to those data/results and always provided that copyright symbol appears together as follows below.

© DORNA WSBK ORGANIZATION Srl 2016





## French Round, 30 September 1-2 October 2016

### World Supersport - Chronological Analysis Free Practice 2nd Session

|    |               |               |               |               |                 |              |              |
|----|---------------|---------------|---------------|---------------|-----------------|--------------|--------------|
| 2  | 33.127        | 23.833        | 23.930        | 27.731        | 1'48.621        | 242.7        | 14:51'56.669 |
| 3  | 32.340        | 23.002        | 24.285        | 27.076        | 1'46.703        | 247.1        | 14:53'43.372 |
| 4  | 32.453        | 23.343        | 24.197        | 27.302        | 1'47.295        | 237.9        | 14:55'30.867 |
| 5  | 32.802        | 23.066        | 23.957        | 26.922        | 1'46.747        | 243.8        | 14:57'17.414 |
| 6  | 32.244        | 23.248        | 23.903        | 26.875        | 1'46.270        | 244.9        | 14:59'03.684 |
| 7  | 32.103        | 23.001        | 23.828        | 26.972        | 1'45.904        | 245.5        | 15:00'49.588 |
| 8  | 32.242        | 23.049        | 23.758        | 26.786        | 1'45.835        | 244.3        | 15:02'35.423 |
| 9  | 32.406        | 23.930        | 25.040        | 31.170        | 1'52.546 P      | 246.6        | 15:04'27.969 |
| 10 | 10'19.465     | 27.809        | 24.530        | 27.148        | 11'38.952 P     | 228.8        | 15:16'06.921 |
| 11 | 32.273        | 23.070        | 23.716        | 26.750        | 1'45.809        | 244.9        | 15:17'52.730 |
| 12 | 32.247        | 23.134        | 23.717        | 27.630        | 1'46.728        | 244.3        | 15:19'39.458 |
| 13 | <b>31.963</b> | 23.214        | 23.924        | 27.174        | 1'46.275        | <b>248.8</b> | 15:21'25.733 |
| 14 | 32.376        | 22.915        | 23.849        | 26.964        | 1'46.104        | 246.0        | 15:23'11.837 |
| 15 | 32.223        | 22.886        | 23.801        | 26.813        | 1'45.723        | 245.5        | 15:24'57.560 |
| 16 | 32.077        | 23.082        | 23.658        | 26.702        | 1'45.519        | 244.9        | 15:26'43.079 |
| 17 | 32.069        | <b>22.842</b> | 23.843        | 26.796        | 1'45.550        | 243.8        | 15:28'28.629 |
| 18 | 32.069        | 22.934        | 24.005        | 26.716        | 1'45.724        | 245.5        | 15:30'14.353 |
| 19 | 32.087        | 23.377        | 23.990        | 32.885        | 1'52.339 P      | 244.9        | 15:32'06.892 |
| 20 | 11'41.055     | 23.902        | 24.389        | 27.503        | 12'56.849 P     | 237.4        | 15:45'03.641 |
| 21 | 32.354        | 28.652        | 24.143        | 27.142        | 1'52.291        | 242.7        | 15:46'55.832 |
| 22 | 32.158        | 23.388        | <b>23.565</b> | <b>26.493</b> | 1'45.604        | 234.3        | 15:48'41.436 |
| 23 | 31.969        | 22.923        | 23.867        | 26.513        | <b>1'45.272</b> | 242.7        | 15:50'26.708 |
| 24 | 32.091        | 22.998        | 23.760        | 26.965        | 1'45.814        | 243.2        | 15:52'12.522 |

#### 36° 42 S. FROSSARD (1'45.342)

| Lap | Seq. 1        | Seq. 2        | Seq. 3        | Seq. 4        | Lap Time        | km/h         | Local Time   |
|-----|---------------|---------------|---------------|---------------|-----------------|--------------|--------------|
|     |               |               |               |               |                 |              | 14:50'38.384 |
| 1   | 54.447        | 24.548        | 24.396        | 27.384        | 2'10.775 P      | 241.1        | 14:52'49.159 |
| 2   | 32.675        | 23.544        | 23.998        | 27.111        | 1'47.328        | 244.9        | 14:54'36.487 |
| 3   | 32.552        | 23.490        | 24.125        | 26.976        | 1'47.143        | 244.3        | 14:56'23.630 |
| 4   | 32.433        | 23.467        | 23.982        | 26.934        | 1'46.816        | 244.9        | 14:58'10.446 |
| 5   | 32.370        | 23.451        | 23.932        | 26.962        | 1'46.715        | 246.6        | 14:59'57.161 |
| 6   | 32.171        | 23.370        | 23.870        | 27.075        | 1'46.486        | 247.1        | 15:01'43.641 |
| 7   | 32.295        | 23.375        | 23.812        | 38.108        | 1'57.590 P      | 244.9        | 15:03'41.237 |
| 8   | 10'25.317     | 23.739        | 24.361        | 27.409        | 11'40.826 P     | 241.1        | 15:15'22.063 |
| 9   | 32.527        | 23.497        | 24.117        | 28.520        | 1'48.661        | 245.5        | 15:17'10.724 |
| 10  | 32.367        | 23.618        | 24.015        | 27.834        | 1'47.834        | 232.3        | 15:18'58.558 |
| 11  | 32.462        | 24.544        | 24.937        | 32.012        | 1'53.955 P      | <b>247.7</b> | 15:20'52.513 |
| 12  | 7'01.223      | 23.731        | 24.014        | 26.973        | 8'15.941 P      | 240.5        | 15:29'08.454 |
| 13  | 32.449        | 23.293        | 23.938        | 27.160        | 1'46.840        | 243.8        | 15:30'55.294 |
| 14  | 32.335        | 23.175        | 23.899        | 26.935        | 1'46.344        | 243.2        | 15:32'41.638 |
| 15  | 32.239        | 23.139        | 23.865        | 26.856        | 1'46.099        | 243.8        | 15:34'27.737 |
| 16  | 32.224        | 23.000        | 23.943        | 26.711        | 1'45.878        | 243.8        | 15:36'13.615 |
| 17  | 32.203        | 24.079        | 25.793        | 32.748        | 1'54.823 C      | 234.8        | 15:38'08.438 |
| 18  | 6'48.893      | 24.440        | 24.175        | 27.002        | 8'04.510 P      | 236.8        | 15:46'12.948 |
| 19  | 32.571        | 23.239        | 23.932        | 26.734        | 1'46.476        | 243.8        | 15:47'59.424 |
| 20  | 32.269        | 23.200        | 23.816        | 26.695        | 1'45.980        | 242.7        | 15:49'45.404 |
| 21  | <b>32.129</b> | <b>22.978</b> | <b>23.634</b> | <b>26.601</b> | <b>1'45.342</b> | 243.2        | 15:51'30.746 |

#### 37° 123 F. PERON (1'45.922)

| Lap | Seq. 1        | Seq. 2        | Seq. 3        | Seq. 4        | Lap Time        | km/h         | Local Time   |
|-----|---------------|---------------|---------------|---------------|-----------------|--------------|--------------|
|     |               |               |               |               |                 |              | 14:46'35.938 |
| 1   | 1'02.854      | 26.021        | 25.144        | 27.547        | 2'21.566 P      | 155.4        | 14:48'57.504 |
| 2   | 32.741        | 23.603        | 23.943        | 27.158        | 1'47.445        | 239.5        | 14:50'44.949 |
| 3   | 32.505        | 23.488        | 23.737        | 27.158        | 1'46.888        | 241.1        | 14:52'31.837 |
| 4   | 32.495        | 23.537        | 23.914        | 27.037        | 1'46.983        | 240.5        | 14:54'18.820 |
| 5   | 32.351        | 23.203        | 23.740        | 30.993        | 1'50.287 P      | 240.0        | 14:56'09.107 |
| 6   | 6'28.154      | 23.972        | 24.366        | 27.719        | 7'44.211 P      | 238.4        | 15:03'53.318 |
| 7   | 32.524        | 24.043        | 27.528        | 27.123        | 1'51.218        | 242.2        | 15:05'44.536 |
| 8   | 32.450        | 23.543        | 24.006        | 32.861        | 1'52.860 P      | 242.2        | 15:07'37.396 |
| 9   | 9'19.810      | 24.374        | 25.500        | 28.760        | 10'38.444 P     | 236.8        | 15:18'15.840 |
| 10  | 32.637        | 23.418        | 25.400        | 28.636        | 1'50.091 C      | 240.5        | 15:20'05.931 |
| 11  | 32.550        | 23.289        | 23.625        | 27.310        | 1'46.774        | 241.1        | 15:21'52.705 |
| 12  | 32.405        | 23.196        | 23.923        | 26.721        | 1'46.245        | 241.1        | 15:23'38.950 |
| 13  | 32.393        | 23.098        | 23.899        | <b>26.532</b> | <b>1'45.922</b> | <b>242.7</b> | 15:25'24.872 |
| 14  | <b>32.286</b> | <b>23.089</b> | 23.874        | 31.618        | 1'50.867        | 240.0        | 15:27'15.739 |
| 15  | 32.550        | 23.215        | <b>23.556</b> | 26.763        | 1'46.084        | 239.5        | 15:29'01.823 |
| 16  | 33.557        | 24.164        | 25.527        | 30.869        | 1'54.117 P      | 234.8        | 15:30'55.940 |
| 17  | 14'05.103     | 24.059        | 24.448        | 27.071        | 15'20.681 P     | 236.3        | 15:46'16.621 |
| 18  | 33.059        | 23.474        | 23.996        | 27.083        | 1'47.612        | 238.9        | 15:48'04.233 |
| 19  | 32.594        | 25.311        | 36.761        | 35.390        | 2'10.056        | 239.5        | 15:50'14.289 |

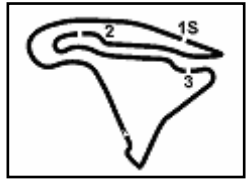
#### 38° 50 B. ORTT (1'45.951)

| Lap | Seq. 1 | Seq. 2 | Seq. 3 | Seq. 4 | Lap Time | km/h | Local Time |
|-----|--------|--------|--------|--------|----------|------|------------|
|-----|--------|--------|--------|--------|----------|------|------------|

P = Pits In/Out - C = Lap-Time Cancelled

These data/results cannot be reproduced, stored and/or transmitted in whole or in part by any manner of electronic, mechanical, photocopying, recording, broadcasting or otherwise now known or herein after developed without the previous express consent by the copyright owner, except for reproduction in daily press and regular printed publications on sale to the public within 60 days of the event related to those data/results and always provided that copyright symbol appears together as follows below.

© DORNA WSBK ORGANIZATION Srl 2016

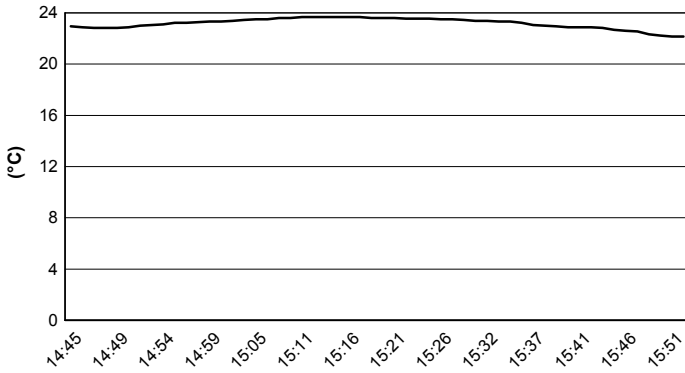


Magny-Cours 4.411 m

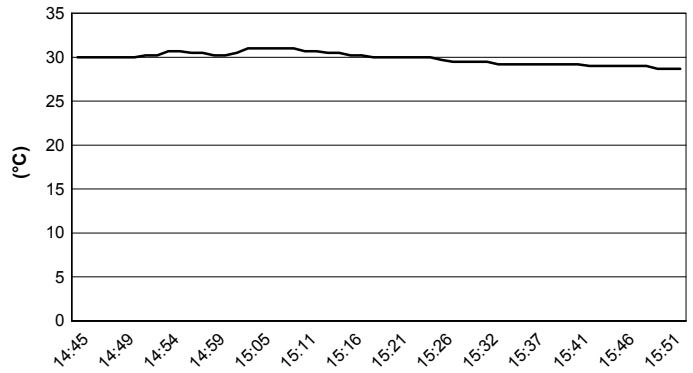
**French Round, 30 September 1-2 October 2016**  
**World Supersport - Weather Report Free Practice 2nd Session**

Session started **14:45**      Session ended **15:53**

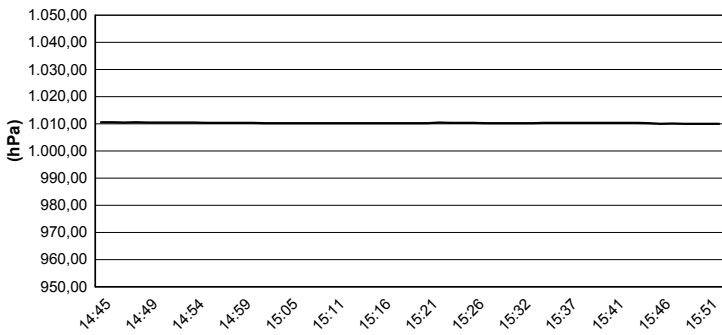
### Air Temperature



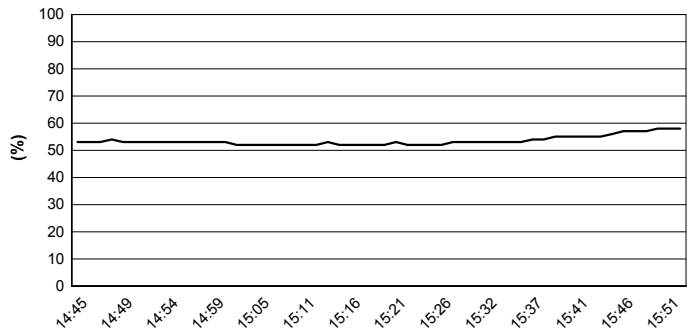
### Track Temperature



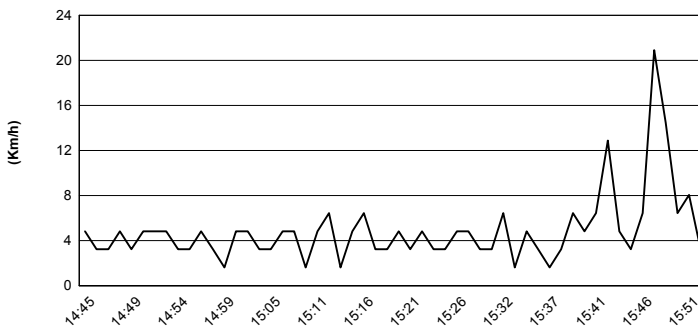
### Air Pressure



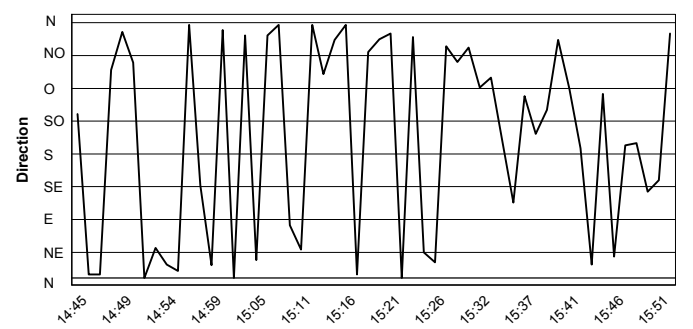
### Humidity



### Wind Speed

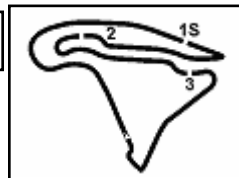


### Wind Direction



These data/results cannot be reproduced, stored and/or transmitted in whole or in part by any manner of electronic, mechanical, photocopying, recording, broadcasting or otherwise now known or herein after developed without the previous express consent by the copyright owner, except for reproduction in daily press and regular printed publications on sale to the public within 60 days of the event related to those data/results and always provided that copyright symbol appears together as follows below.  
© DORNA WSBK ORGANIZATION Srl 2016





## French Round, 30 September 1-2 October 2016

### World Supersport - Provisional Superpoles Entry List

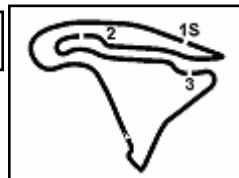
#### Superpole 1

| No. | Rider                   | Nat | Team                            | Bike                | Time            |
|-----|-------------------------|-----|---------------------------------|---------------------|-----------------|
| 11  | <b>2</b> P. JACOBSEN    | USA | Honda World Supersport Team     | Honda CBR600RR      | <b>1'42.508</b> |
| 12  | <b>87</b> L. ZANETTI    | ITA | MV Agusta Reparto Corse         | MV Agusta F3 675    | <b>1'42.533</b> |
| 13  | <b>64</b> F. CARICASULO | ITA | Bardahl Evan Bros. Honda Racing | Honda CBR600RR      | <b>1'42.554</b> |
| 14  | <b>78</b> H. OKUBO      | JPN | CIA Landlord Insurance Honda    | Honda CBR600RR      | <b>1'42.562</b> |
| 15  | <b>71</b> C. BERGMAN    | SWE | CIA Landlord Insurance Honda    | Honda CBR600RR      | <b>1'42.599</b> |
| 16  | <b>65</b> M. CANDUCCI   | ITA | GRT Racing Team                 | MV Agusta F3 675    | <b>1'42.665</b> |
| 17  | <b>4</b> G. REA         | GBR | GRT Racing Team                 | MV Agusta F3 675    | <b>1'42.974</b> |
| 18  | <b>77</b> K. RYDE       | GBR | Schmidt Racing                  | Kawasaki ZX-6R      | <b>1'43.013</b> |
| 19  | <b>81</b> L. STAPLEFORD | GBR | Profile Racing                  | Triumph Daytona 675 | <b>1'43.038</b> |
| 20  | <b>111</b> K. SMITH     | GBR | CIA Landlord Insurance Honda    | Honda CBR600RR      | <b>1'43.295</b> |
| 21  | <b>26</b> G. ANTIGA     | FRA | MTM / HS Kawasaki               | Kawasaki ZX-6R      | <b>1'43.340</b> |
| 22  | <b>23</b> C. TANGRE     | FRA | Team Yohann Moto Sport          | Suzuki GSX-R600     | <b>1'43.363</b> |
| 23  | <b>44</b> R. ROLFO      | ITA | Team Factory Vamag              | MV Agusta F3 675    | <b>1'43.415</b> |
| 24  | <b>63</b> Z. KHAIRUDDIN | MAS | Orelac Racing VerdNatura        | Kawasaki ZX-6R      | <b>1'43.432</b> |
| 25  | <b>69</b> O. JEZEK      | CZE | Team GoEleven                   | Kawasaki ZX-6R      | <b>1'43.504</b> |
| 26  | <b>80</b> X. PINSACH    | ESP | Gemar Balloons - Team Lorini    | Honda CBR600RR      | <b>1'43.533</b> |
| 27  | <b>38</b> H. SOOMER     | EST | Kallio Racing                   | Yamaha YZF R6       | <b>1'43.600</b> |
| 28  | <b>10</b> N. CALERO     | ESP | Orelac Racing VerdNatura        | Kawasaki ZX-6R      | <b>1'43.680</b> |
| 29  | <b>6</b> D. STIRPE      | ITA | Scuderia Maranga Racing         | Kawasaki ZX-6R      | <b>1'44.112</b> |
| 30  | <b>12</b> C. GOBBI      | ITA | VFT Racing                      | Yamaha YZF R6       | <b>1'44.395</b> |
| 31  | <b>183</b> P. POLESSO   | FRA | TCP Racing                      | Yamaha YZF R6       | <b>1'44.597</b> |
| 32  | <b>83</b> L. EPIS       | AUS | Response RE Racing              | Kawasaki ZX-6R      | <b>1'44.765</b> |
| 33  | <b>58</b> C. STOLL      | FRA | CS Race Team                    | Triumph Daytona 675 | <b>1'44.846</b> |
| 34  | <b>35</b> S. HILL       | GBR | CIA Landlord Insurance Honda    | Honda CBR600RR      | <b>1'45.265</b> |
| 35  | <b>20</b> D. LOUREIRO   | RSA | WILSport Racedays Honda         | Honda CBR600RR      | <b>1'45.272</b> |
| 36  | <b>42</b> S. FROSSARD   | SUI | Team CMS                        | Yamaha YZF R6       | <b>1'45.342</b> |
| 37  | <b>123</b> F. PERON     | FRA | Team 23 FELIX LE Pi-LOT by ASPI | Yamaha YZF R6       | <b>1'45.922</b> |
| 38  | <b>50</b> B. ORTT       | CAN | WILSport Racedays Honda         | Honda CBR600RR      | <b>1'45.951</b> |

#### Superpole 2

| No. | Rider                     | Nat | Team                         | Bike             | Time            |
|-----|---------------------------|-----|------------------------------|------------------|-----------------|
| 1   | <b>1</b> K. SOFUOGLU      | TUR | Kawasaki Puccetti Racing     | Kawasaki ZX-6R   | <b>1'41.507</b> |
| 2   | <b>21</b> R. KRUMMENACHER | SUI | Kawasaki Puccetti Racing     | Kawasaki ZX-6R   | <b>1'41.889</b> |
| 3   | <b>55</b> I. MIKHALCHIK   | UKR | DS Junior Team               | Kawasaki ZX-6R   | <b>1'41.916</b> |
| 4   | <b>86</b> A. BADOVINI     | ITA | Gemar Balloons - Team Lorini | Honda CBR600RR   | <b>1'41.923</b> |
| 5   | <b>47</b> A. BASSANI      | ITA | San Carlo Team Italia        | Kawasaki ZX-6R   | <b>1'41.948</b> |
| 6   | <b>66</b> N. TUULI        | FIN | Kallio Racing                | Yamaha YZF R6    | <b>1'42.044</b> |
| 7   | <b>16</b> J. CLUZEL       | FRA | MV Agusta Reparto Corse      | MV Agusta F3 675 | <b>1'42.200</b> |
| 8   | <b>11</b> C. GAMARINO     | ITA | Team GoEleven                | Kawasaki ZX-6R   | <b>1'42.286</b> |
| 9   | <b>25</b> A. BALDOLINI    | ITA | Race Department ATK#25       | MV Agusta F3 675 | <b>1'42.299</b> |
| 10  | <b>61</b> A. ZACCONE      | ITA | San Carlo Team Italia        | Kawasaki ZX-6R   | <b>1'42.370</b> |
| *   |                           |     |                              |                  |                 |
| *   |                           |     |                              |                  |                 |

These data/results cannot be reproduced, stored and/or transmitted in whole or in part by any manner of electronic, mechanical, photocopying, recording, broadcasting or otherwise now known or herein after developed without the previous express consent by the copyright owner, except for reproduction in daily press and regular printed publications on sale to the public within 60 days of the event related to those data/results and always provided that copyright symbol appears together as follows below.  
© DORNA WSBK ORGANIZATION Srl 2016



Magny-Cours 4.411 m

## French Round, 30 September 1-2 October 2016

### World Supersport - Provisional Superpoles Entry List

\* These positions are assigned to the 1st and 2nd rider classified in Superpole 1

30/09/2016

These data/results cannot be reproduced, stored and/or transmitted in whole or in part by any manner of electronic, mechanical, photocopying, recording, broadcasting or otherwise now known or herein after developed without the previous express consent by the copyright owner, except for reproduction in daily press and regular printed publications on sale to the public within 60 days of the event related to those data/results and always provided that copyright symbol appears together as follows below.

© DORNA WSBK ORGANIZATION Srl 2016

**FKR PERUGIA TIMING**

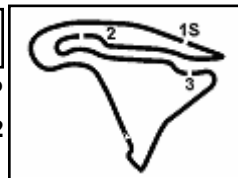


Official Tyre Supplier



Official Timekeeper





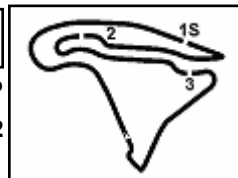
## French Round, 30 September 1-2 October 2016

### World Supersport - Best Laps & Speeds

| No. | Rider                  |                         | Best Lap        | FP1  |       | FP2  |       |    |     |
|-----|------------------------|-------------------------|-----------------|------|-------|------|-------|----|-----|
|     | Nat                    | Bike                    |                 | laps | speed | laps | speed |    |     |
| 1   | <b>K. SOFUOGLU</b>     | TUR Kawasaki ZX-6R      | <b>1'41.507</b> | 49   | 260   | 25   | 258   | 24 | 260 |
| 2   | <b>R. KRUMMENACHER</b> | SUI Kawasaki ZX-6R      | <b>1'41.889</b> | 48   | 260   | 24   | 257   | 24 | 260 |
| 3   | <b>I. MIKHALCHIK</b>   | UKR Kawasaki ZX-6R      | <b>1'41.916</b> | 47   | 259   | 24   | 254   | 23 | 259 |
| 4   | <b>A. BADOVINI</b>     | ITA Honda CBR600RR      | <b>1'41.923</b> | 28   | 256   | 10   | 255   | 18 | 256 |
| 5   | <b>A. BASSANI</b>      | ITA Kawasaki ZX-6R      | <b>1'41.948</b> | 49   | 257   | 24   | 257   | 25 | 257 |
| 6   | <b>N. TUULI</b>        | FIN Yamaha YZF R6       | <b>1'42.044</b> | 43   | 261   | 18   | 257   | 25 | 261 |
| 7   | <b>J. CLUZEL</b>       | FRA MV Agusta F3 675    | <b>1'42.200</b> | 37   | 259   | 19   | 259   | 18 | 257 |
| 8   | <b>C. GAMARINO</b>     | ITA Kawasaki ZX-6R      | <b>1'42.286</b> | 45   | 256   | 24   | 255   | 21 | 256 |
| 9   | <b>A. BALDOLINI</b>    | ITA MV Agusta F3 675    | <b>1'42.299</b> | 46   | 257   | 25   | 257   | 21 | 257 |
| 10  | <b>A. ZACCONE</b>      | ITA Kawasaki ZX-6R      | <b>1'42.370</b> | 37   | 255   | 22   | 255   | 15 | 254 |
| 11  | <b>P. JACOBSEN</b>     | USA Honda CBR600RR      | <b>1'42.508</b> | 44   | 260   | 22   | 257   | 22 | 260 |
| 12  | <b>L. ZANETTI</b>      | ITA MV Agusta F3 675    | <b>1'42.533</b> | 38   | 260   | 18   | 257   | 20 | 260 |
| 13  | <b>F. CARICASULO</b>   | ITA Honda CBR600RR      | <b>1'42.554</b> | 45   | 254   | 24   | 253   | 21 | 254 |
| 14  | <b>H. OKUBO</b>        | JPN Honda CBR600RR      | <b>1'42.562</b> | 47   | 256   | 26   | 253   | 21 | 256 |
| 15  | <b>C. BERGMAN</b>      | SWE Honda CBR600RR      | <b>1'42.599</b> | 50   | 256   | 25   | 255   | 25 | 256 |
| 16  | <b>M. CANDUCCI</b>     | ITA MV Agusta F3 675    | <b>1'42.665</b> | 43   | 257   | 18   | 254   | 25 | 257 |
| 17  | <b>G. REA</b>          | GBR MV Agusta F3 675    | <b>1'42.974</b> | 42   | 252   | 22   | 252   | 20 | 250 |
| 18  | <b>K. RYDE</b>         | GBR Kawasaki ZX-6R      | <b>1'43.013</b> | 46   | 258   | 25   | 257   | 21 | 258 |
| 19  | <b>L. STAPLEFORD</b>   | GBR Triumph Daytona 675 | <b>1'43.038</b> | 53   | 255   | 26   | 251   | 27 | 255 |
| 20  | <b>K. SMITH</b>        | GBR Honda CBR600RR      | <b>1'43.295</b> | 51   | 257   | 28   | 255   | 23 | 257 |

These data/results cannot be reproduced, stored and/or transmitted in whole or in part by any manner of electronic, mechanical, photocopying, recording, broadcasting or otherwise now known or herein after developed without the previous express consent by the copyright owner, except for reproduction in daily press and regular printed publications on sale to the public within 60 days of the event related to those data/results and always provided that copyright symbol appears together as follows below.

© DORNA WSBK ORGANIZATION Srl 2016



## French Round, 30 September 1-2 October 2016

### World Supersport - Best Laps & Speeds

| No. | Rider      |                      | Best Lap        |     | FP1      |       | FP2      |       |
|-----|------------|----------------------|-----------------|-----|----------|-------|----------|-------|
|     | Nat        | Bike                 |                 |     | laps     | speed | laps     | speed |
| 21  | <b>26</b>  | <b>G. ANTIGA</b>     | <b>1'43.340</b> |     | 1'44.449 |       | 1'43.340 |       |
|     | FRA        | Kawasaki ZX-6R       | 51              | 253 | 25       | 253   | 26       | 253   |
| 22  | <b>23</b>  | <b>C. TANGRE</b>     | <b>1'43.363</b> |     | 1'44.159 |       | 1'43.363 |       |
|     | FRA        | Suzuki GSX-R600      | 49              | 251 | 25       | 249   | 24       | 251   |
| 23  | <b>44</b>  | <b>R. ROLFO</b>      | <b>1'43.415</b> |     | 1'44.000 |       | 1'43.415 |       |
|     | ITA        | MV Agusta F3 675     | 44              | 255 | 23       | 251   | 21       | 255   |
| 24  | <b>63</b>  | <b>Z. KHAIRUDDIN</b> | <b>1'43.432</b> |     | 1'44.563 |       | 1'43.432 |       |
|     | MAS        | Kawasaki ZX-6R       | 45              | 257 | 22       | 255   | 23       | 257   |
| 25  | <b>69</b>  | <b>O. JEZEK</b>      | <b>1'43.504</b> |     | 1'43.504 |       | 1'44.072 |       |
|     | CZE        | Kawasaki ZX-6R       | 42              | 260 | 26       | 260   | 16       | 257   |
| 26  | <b>80</b>  | <b>X. PINSACH</b>    | <b>1'43.533</b> |     | 1'43.797 |       | 1'43.533 |       |
|     | ESP        | Honda CBR600RR       | 51              | 255 | 27       | 253   | 24       | 255   |
| 27  | <b>38</b>  | <b>H. SOOMER</b>     | <b>1'43.600</b> |     | 1'43.600 |       | 1'44.478 |       |
|     | EST        | Yamaha YZF R6        | 38              | 255 | 20       | 255   | 18       | 255   |
| 28  | <b>10</b>  | <b>N. CALERO</b>     | <b>1'43.680</b> |     | 1'44.294 |       | 1'43.680 |       |
|     | ESP        | Kawasaki ZX-6R       | 50              | 258 | 25       | 258   | 25       | 257   |
| 29  | <b>6</b>   | <b>D. STIRPE</b>     | <b>1'44.112</b> |     | 1'44.112 |       | 1'44.136 |       |
|     | ITA        | Kawasaki ZX-6R       | 49              | 254 | 26       | 252   | 23       | 254   |
| 30  | <b>12</b>  | <b>C. GOBBI</b>      | <b>1'44.395</b> |     | 1'44.778 |       | 1'44.395 |       |
|     | ITA        | Yamaha YZF R6        | 37              | 252 | 19       | 252   | 18       | 252   |
| 31  | <b>183</b> | <b>P. POLESSO</b>    | <b>1'44.597</b> |     | 1'44.951 |       | 1'44.597 |       |
|     | FRA        | Yamaha YZF R6        | 50              | 250 | 24       | 250   | 26       | 246   |
| 32  | <b>83</b>  | <b>L. EPIS</b>       | <b>1'44.765</b> |     | 1'45.396 |       | 1'44.765 |       |
|     | AUS        | Kawasaki ZX-6R       | 42              | 250 | 20       | 249   | 22       | 250   |
| 33  | <b>58</b>  | <b>C. STOLL</b>      | <b>1'44.846</b> |     | 1'46.087 |       | 1'44.846 |       |
|     | FRA        | Triumph Daytona 675  | 30              | 245 | 12       | 244   | 18       | 245   |
| 34  | <b>35</b>  | <b>S. HILL</b>       | <b>1'45.265</b> |     | 1'46.538 |       | 1'45.265 |       |
|     | GBR        | Honda CBR600RR       | 51              | 254 | 27       | 250   | 24       | 254   |
| 35  | <b>20</b>  | <b>D. LOUREIRO</b>   | <b>1'45.272</b> |     | 1'45.784 |       | 1'45.272 |       |
|     | RSA        | Honda CBR600RR       | 51              | 249 | 27       | 246   | 24       | 249   |
| 36  | <b>42</b>  | <b>S. FROSSARD</b>   | <b>1'45.342</b> |     | 1'45.820 |       | 1'45.342 |       |
|     | SUI        | Yamaha YZF R6        | 43              | 248 | 22       | 247   | 21       | 248   |
| 37  | <b>123</b> | <b>F. PERON</b>      | <b>1'45.922</b> |     | 1'46.559 |       | 1'45.922 |       |
|     | FRA        | Yamaha YZF R6        | 41              | 247 | 22       | 247   | 19       | 243   |
| 38  | <b>50</b>  | <b>B. ORTT</b>       | <b>1'45.951</b> |     | 1'47.886 |       | 1'45.951 |       |
|     | CAN        | Honda CBR600RR       | 35              | 245 | 12       | 244   | 23       | 245   |
| 39  | <b>7</b>   | <b>A. LICCIARDI</b>  | <b>1'51.347</b> |     | 1'51.347 |       | 1'52.650 |       |
|     | BEL        | Honda CBR600RR       | 30              | 246 | 21       | 245   | 9        | 246   |

30/09/2016

These data/results cannot be reproduced, stored and/or transmitted in whole or in part by any manner of electronic, mechanical, photocopying, recording, broadcasting or otherwise now known or herein after developed without the previous express consent by the copyright owner, except for reproduction in daily press and regular printed publications on sale to the public within 60 days of the event related to those data/results and always provided that copyright symbol appears together as follows below.

© DORNA WSBK ORGANIZATION Srl 2016