

## UK Round, 27-28-29 May 2016

### World Supersport - Results Warm Up

No.	Rider	Nat	Team	Bike	Class	Time	Gap	Rel.	Laps	Speed	
										Avg	Max
1	1 K. SOFUOGLU	TUR	Kawasaki Puccetti Racing	Kawasaki ZX-6R		<b>1'31.275</b>			8	158,672	<b>238,4</b>
2	2 P. JACOBSEN	USA	Honda World Supersport Team	Honda CBR600RR		<b>1'31.333</b>	0.058	0.058	9	158,571	<b>241,6</b>
3	81 L. STAPLEFORD	GBR	Profile Racing	Triumph Daytona 675		<b>1'31.441</b>	0.166	0.108	9	158,384	<b>242,2</b>
4	21 R. KRUMMENACHER	SUI	Kawasaki Puccetti Racing	Kawasaki ZX-6R		<b>1'31.444</b>	0.169	0.003	9	158,379	<b>239,5</b>
5	64 F. CARICASULO	ITA	Bardahl Evan Bros. Honda Racing	Honda CBR600RR		<b>1'31.721</b>	0.446	0.277	8	157,901	<b>240,0</b>
6	86 A. BADOVINI	ITA	Gemar Balloons - Team Lorini	Honda CBR600RR		<b>1'31.816</b>	0.541	0.095	9	157,737	<b>234,8</b>
7	16 J. CLUZEL	FRA	MV Agusta Reparto Corse	MV Agusta F3 675		<b>1'31.860</b>	0.585	0.044	9	157,662	<b>244,9</b>
8	4 G. REA	GBR	GRT Racing Team	MV Agusta F3 675		<b>1'32.120</b>	0.845	0.260	9	157,217	<b>239,5</b>
9	11 C. GAMARINO	ITA	Team GoEleven	Kawasaki ZX-6R		<b>1'32.189</b>	0.914	0.069	9	157,099	<b>236,8</b>
10	111 K. SMITH	GBR	CIA Landlord Insurance Honda	Honda CBR600RR		<b>1'32.379</b>	1.104	0.190	9	156,776	<b>235,3</b>
11	87 L. ZANETTI	ITA	MV Agusta Reparto Corse	MV Agusta F3 675		<b>1'32.390</b>	1.115	0.011	9	156,757	<b>241,6</b>
12	25 A. BALDOLINI	ITA	Race Department ATK#25	MV Agusta F3 675		<b>1'32.494</b>	1.219	0.104	7	156,581	<b>235,3</b>
13	44 R. ROLFO	ITA	Team Factory Vamag	MV Agusta F3 675		<b>1'32.606</b>	1.331	0.112	9	156,392	<b>236,8</b>
14	55 I. MIKHALCHIK	UKR	DS Junior Team	Kawasaki ZX-6R	ESS	<b>1'32.689</b>	1.414	0.083	9	156,252	<b>237,9</b>
15	61 A. ZACCONI	ITA	San Carlo Team Italia	Kawasaki ZX-6R	ESS	<b>1'32.691</b>	1.416	0.002	9	156,248	<b>240,0</b>
16	69 O. JEZEK	CZE	Team GoEleven	Kawasaki ZX-6R		<b>1'32.745</b>	1.470	0.054	6	156,157	<b>237,9</b>
17	78 H. OKUBO	JPN	CIA Landlord Insurance Honda	Honda CBR600RR		<b>1'32.863</b>	1.588	0.118	8	155,959	<b>234,8</b>
18	41 A. WAGNER	AUS	GRT Racing Team	MV Agusta F3 675		<b>1'32.883</b>	1.608	0.020	9	155,925	<b>237,4</b>
19	47 A. BASSANI	ITA	San Carlo Team Italia	Kawasaki ZX-6R	ESS	<b>1'33.006</b>	1.731	0.123	9	155,719	<b>242,7</b>
20	88 N. TEROL	ESP	Schmidt Racing	MV Agusta F3 675		<b>1'33.046</b>	1.771	0.040	8	155,652	<b>237,9</b>
21	89 A. IRWIN	GBR	Appleyard Macadam Racing, with Integro	Yamaha YZF R6		<b>1'33.134</b>	1.859	0.088	9	155,505	<b>237,9</b>
22	77 K. RYDE	GBR	Schmidt Racing	MV Agusta F3 675		<b>1'33.208</b>	1.933	0.074	9	155,382	<b>240,0</b>
23	63 Z. KHAIRUDDIN	MAS	Orelac Racing VerdNatura	Kawasaki ZX-6R		<b>1'33.262</b>	1.987	0.054	9	155,292	<b>239,5</b>
24	71 C. BERGMAN	SWE	CIA Landlord Insurance Honda	Honda CBR600RR		<b>1'33.375</b>	2.100	0.113	9	155,104	<b>236,8</b>
25	83 L. EPIS	AUS	Response RE Racing	Kawasaki ZX-6R		<b>1'33.758</b>	2.483	0.383	9	154,470	<b>233,8</b>
26	10 N. CALERO	ESP	Orelac Racing VerdNatura	Kawasaki ZX-6R		<b>1'33.895</b>	2.620	0.137	9	154,245	<b>236,8</b>
27	23 C. TANGRE	FRA	Team Yohann Moto Sport	Suzuki GSX-R600	ESS	<b>1'34.114</b>	2.839	0.219	9	153,886	<b>236,8</b>
28	96 J. ORELLANA	ESP	WILSport Racedays Honda	Honda CBR600RR	ESS	<b>1'34.305</b>	3.030	0.191	8	153,574	<b>233,3</b>
29	12 C. GOBBI	ITA	VFT Racing	Yamaha YZF R6	ESS	<b>1'34.581</b>	3.306	0.276	8	153,126	<b>236,3</b>
30	6 D. STIRPE	ITA	Scuderia Maranga Racing	Kawasaki ZX-6R	ESS	<b>1'34.591</b>	3.316	0.010	8	153,110	<b>237,4</b>
31	7 A. LICCIARDI	BEL	R2 MotorRacing Team	Kawasaki ZX-6R	ESS	<b>1'34.689</b>	3.414	0.098	9	152,951	<b>237,4</b>
32	74 J. VAN SIKKELERUS	NED	MTM Team	Yamaha YZF R6	ESS	<b>1'34.835</b>	3.560	0.146	9	152,716	<b>235,3</b>
33	50 B. ORTT	CAN	WILSport Racedays Honda	Honda CBR600RR	ESS	<b>1'34.881</b>	3.606	0.046	9	152,642	<b>230,3</b>
34	35 S. HILL	GBR	CIA Landlord Insurance Honda	Honda CBR600RR		<b>1'35.096</b>	3.821	0.215	8	152,297	<b>228,3</b>
35	68 G. SCOTT	AUS	Gemar Balloons - Team Lorini	Honda CBR600RR		<b>1'35.106</b>	3.831	0.010	5	152,281	<b>238,4</b>

AIR	Humidity:	84%	Temp:	11°C
TRACK	Condition:	Dry	Temp:	19°C

Lap Record:	2015 J.Cluzel	1'30.425	160,160	Km/h
Best Lap:	2015 K.Sofuoglu	1'29.925	161,050	Km/h

These data/results cannot be reproduced, stored and/or transmitted in whole or in part by any manner of electronic, mechanical, photocopying, recording, broadcasting or otherwise now known or herein after developed without the previous express consent by the copyright owner, except for reproduction in daily press and regular printed publications on sale to the public within 60 days of the event related to those data/results and always provided that copyright symbol appears together as follows below.

© DORNA WSBK ORGANIZATION Srl 2016

Start	End	The results are provisional until the end of the time limit for protests and appeals
29/05/2016 09:00	09:17	and the completion of the technical checks.

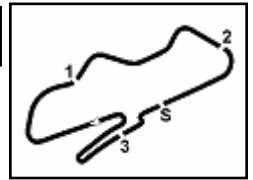
FIGR PERUGIA TIMING



Official Tyre Supplier



Official Timekeeper



**UK Round, 27-28-29 May 2016**  
**World Supersport - Results Warm Up**

**Session Highlights**

09.00.04 Start  
09.04.31 Caricasulo On the Gravel - Re-Joined - Turn 9  
09.17.15 End Of Session

**Fastest Laps Sequence**

No.	Rider	Nat	Team	Bike	Local Time	Time	Gap	Avg
1	K. SOFUOGLU	TUR	Kawasaki Puccetti Racing	Kawasaki ZX-6R	09:03'09.766	<b>1'31.816</b>		157,737
1	K. SOFUOGLU	TUR	Kawasaki Puccetti Racing	Kawasaki ZX-6R	09:04'41.116	<b>1'31.350</b>	-0.466	158,542
1	K. SOFUOGLU	TUR	Kawasaki Puccetti Racing	Kawasaki ZX-6R	09:07'43.916	<b>1'31.275</b>	-0.075	158,672

These data/results cannot be reproduced, stored and/or transmitted in whole or in part by any manner of electronic, mechanical, photocopying, recording, broadcasting or otherwise now known or herein after developed without the previous express consent by the copyright owner, except for reproduction in daily press and regular printed publications on sale to the public within 60 days of the event related to those data/results and always provided that copyright symbol appears together as follows below.

© DORNA WSBK ORGANIZATION Srl 2016

Start	End	The results are provisional until the end of the time limit for protests and appeals and the completion of the technical checks.
29/05/2016 09:00	09:17	

**FKR PERUGIA TIMING**



Official Tyre Supplier



Official Timekeeper

## UK Round, 27-28-29 May 2016

### World Supersport - Best Sector & Speed Warm Up

Donington Park 4.023 m

#### Best Lap

1	1 K. SOFUOGLU	Kawasaki ZX-6R	1'31.275
2	2 P. JACOBSEN	Honda CBR600RR	1'31.333
3	81 L. STAPLEFORD	Triumph Daytona 675	1'31.441
4	21 R. KRUMMENACHER	Kawasaki ZX-6R	1'31.444
5	64 F. CARICASULO	Honda CBR600RR	1'31.721
6	86 A. BADOVINI	Honda CBR600RR	1'31.816
7	16 J. CLUZEL	MV Austa F3 675	1'31.860
8	4 G. REA	MV Austa F3 675	1'32.120
9	11 C. GAMARINO	Kawasaki ZX-6R	1'32.189
10	111 K. SMITH	Honda CBR600RR	1'32.379
11	87 L. ZANETTI	MV Austa F3 675	1'32.390
12	25 A. BALDOLINI	MV Austa F3 675	1'32.494
13	44 R. ROLFO	MV Austa F3 675	1'32.606
14	55 I. MIKHALCHIK	Kawasaki ZX-6R	1'32.689
15	61 A. ZACCONE	Kawasaki ZX-6R	1'32.691
16	69 O. JEZEK	Kawasaki ZX-6R	1'32.745
17	78 H. OKUBO	Honda CBR600RR	1'32.863
18	41 A. WAGNER	MV Austa F3 675	1'32.883
19	47 A. BASSANI	Kawasaki ZX-6R	1'33.006
20	88 N. TEROL	MV Austa F3 675	1'33.046
21	89 A. IRWIN	Yamaha YZF R6	1'33.134
22	77 K. RYDE	MV Austa F3 675	1'33.208
23	63 Z. KHAIRUDDIN	Kawasaki ZX-6R	1'33.262
24	71 C. BERGMAN	Honda CBR600RR	1'33.375
25	83 L. EPIS	Kawasaki ZX-6R	1'33.758
26	10 N. CALERO	Kawasaki ZX-6R	1'33.895
27	23 C. TANGRE	Suzuki GSX-R600	1'34.114
28	96 J. ORELLANA	Honda CBR600RR	1'34.305
29	12 C. GOBBI	Yamaha YZF R6	1'34.581
30	6 D. STIRPE	Kawasaki ZX-6R	1'34.591
31	7 A. LICCIARDI	Kawasaki ZX-6R	1'34.689
32	74 J. VAN SIKKELERUS	Yamaha YZF R6	1'34.835
33	50 B. ORTT	Honda CBR600RR	1'34.881
34	35 S. HILL	Honda CBR600RR	1'35.096
35	68 G. SCOTT	Honda CBR600RR	1'35.106

#### Top Speeds

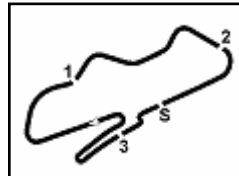
1	16 J. CLUZEL	MV Austa F3 675	244.9
2	47 A. BASSANI	Kawasaki ZX-6R	242.7
3	81 L. STAPLEFORD	Triumph Daytona 675	242.2
4	87 L. ZANETTI	MV Austa F3 675	241.6
5	2 P. JACOBSEN	Honda CBR600RR	241.6
6	64 F. CARICASULO	Honda CBR600RR	240.0
7	77 K. RYDE	MV Austa F3 675	240.0
8	61 A. ZACCONE	Kawasaki ZX-6R	240.0
9	4 G. REA	MV Austa F3 675	239.5
10	63 Z. KHAIRUDDIN	Kawasaki ZX-6R	239.5
11	21 R. KRUMMENACHER	Kawasaki ZX-6R	239.5
12	1 K. SOFUOGLU	Kawasaki ZX-6R	238.4
13	68 G. SCOTT	Honda CBR600RR	238.4
14	88 N. TEROL	MV Austa F3 675	237.9
15	55 I. MIKHALCHIK	Kawasaki ZX-6R	237.9
16	89 A. IRWIN	Yamaha YZF R6	237.9
17	69 O. JEZEK	Kawasaki ZX-6R	237.9
18	41 A. WAGNER	MV Austa F3 675	237.4
19	6 D. STIRPE	Kawasaki ZX-6R	237.4
20	7 A. LICCIARDI	Kawasaki ZX-6R	237.4
21	71 C. BERGMAN	Honda CBR600RR	236.8
22	44 R. ROLFO	MV Austa F3 675	236.8
23	23 C. TANGRE	Suzuki GSX-R600	236.8
24	11 C. GAMARINO	Kawasaki ZX-6R	236.8
25	10 N. CALERO	Kawasaki ZX-6R	236.8
26	12 C. GOBBI	Yamaha YZF R6	236.3
27	25 A. BALDOLINI	MV Austa F3 675	235.3
28	111 K. SMITH	Honda CBR600RR	235.3
29	74 J. VAN SIKKELERUS	Yamaha YZF R6	235.3
30	78 H. OKUBO	Honda CBR600RR	234.8
31	86 A. BADOVINI	Honda CBR600RR	234.8
32	83 L. EPIS	Kawasaki ZX-6R	233.8
33	96 J. ORELLANA	Honda CBR600RR	233.3
34	50 B. ORTT	Honda CBR600RR	230.3
35	35 S. HILL	Honda CBR600RR	228.3

Seg. 1			Seg. 2			Seg. 3			Seg. 4			Seg. 5		
1	1 K. SOFUOGLU	19.555	1	21 R. KRUMMENAC	24.688	1	81 L. STAPLEFORD	11.702	1	2 P. JACOBSEN	10.982	1	4 G. REA	23.642
2	2 P. JACOBSEN	19.610	2	81 L. STAPLEFORD	24.691	2	47 A. BASSANI	11.774	2	21 R. KRUMMENAC	11.011	2	1 K. SOFUOGLU	23.703
3	21 R. KRUMMENAC	19.694	3	1 K. SOFUOGLU	24.740	3	64 F. CARICASULO	11.782	3	1 K. SOFUOGLU	11.063	3	86 A. BADOVINI	23.783
4	64 F. CARICASULO	19.750	4	16 J. CLUZEL	24.756	4	2 P. JACOBSEN	11.822	4	81 L. STAPLEFORD	11.126	4	64 F. CARICASULO	23.855
5	86 A. BADOVINI	19.760	5	64 F. CARICASULO	24.766	5	1 K. SOFUOGLU	11.826	5	86 A. BADOVINI	11.142	5	87 L. ZANETTI	23.897
6	16 J. CLUZEL	19.778	6	11 C. GAMARINO	24.784	6	21 R. KRUMMENAC	11.832	6	44 R. ROLFO	11.183	6	25 A. BALDOLINI	23.948
7	69 O. JEZEK	19.786	7	2 P. JACOBSEN	24.792	7	61 A. ZACCONE	11.865	7	111 K. SMITH	11.183	7	21 R. KRUMMENAC	23.952
8	11 C. GAMARINO	19.795	8	86 A. BADOVINI	24.828	8	89 A. IRWIN	11.871	8	87 L. ZANETTI	11.185	8	2 P. JACOBSEN	23.962
9	81 L. STAPLEFORD	19.831	9	25 A. BALDOLINI	24.929	9	11 C. GAMARINO	11.901	9	4 G. REA	11.188	9	16 J. CLUZEL	23.974
10	111 K. SMITH	19.845	10	88 N. TEROL	24.951	10	55 I. MIKHALCHIK	11.909	10	55 I. MIKHALCHIK	11.203	10	111 K. SMITH	23.981
11	87 L. ZANETTI	19.892	11	111 K. SMITH	24.960	11	86 A. BADOVINI	11.915	11	11 C. GAMARINO	11.239	11	81 L. STAPLEFORD	23.993
12	44 R. ROLFO	19.899	12	47 A. BASSANI	25.033	12	16 J. CLUZEL	11.930	12	41 A. WAGNER	11.243	12	11 C. GAMARINO	24.044
13	4 G. REA	19.903	13	41 A. WAGNER	25.037	13	77 K. RYDE	11.942	13	25 A. BALDOLINI	11.253	13	69 O. JEZEK	24.080
14	25 A. BALDOLINI	19.903	14	4 G. REA	25.060	14	69 O. JEZEK	11.954	14	64 F. CARICASULO	11.256	14	44 R. ROLFO	24.099
15	41 A. WAGNER	19.905	15	87 L. ZANETTI	25.071	15	111 K. SMITH	11.960	15	77 K. RYDE	11.256	15	71 C. BERGMAN	24.108
16	77 K. RYDE	19.905	16	61 A. ZACCONE	25.097	16	63 Z. KHAIRUDDIN	11.978	16	78 H. OKUBO	11.271	16	55 I. MIKHALCHIK	24.110
17	89 A. IRWIN	19.927	17	78 H. OKUBO	25.104	17	4 G. REA	11.996	17	61 A. ZACCONE	11.272	17	63 Z. KHAIRUDDIN	24.177
18	88 N. TEROL	19.939	18	55 I. MIKHALCHIK	25.159	18	23 C. TANGRE	12.008	18	69 O. JEZEK	11.295	18	78 H. OKUBO	24.240
19	55 I. MIKHALCHIK	19.958	19	44 R. ROLFO	25.170	19	71 C. BERGMAN	12.015	19	16 J. CLUZEL	11.301	19	89 A. IRWIN	24.252
20	47 A. BASSANI	20.042	20	77 K. RYDE	25.215	20	78 H. OKUBO	12.020	20	96 J. ORELLANA	11.304	20	61 A. ZACCONE	24.266
21	61 A. ZACCONE	20.051	21	69 O. JEZEK	25.233	21	44 R. ROLFO	12.029	21	88 N. TEROL	11.311	21	88 N. TEROL	24.352
22	78 H. OKUBO	20.054	22	89 A. IRWIN	25.263	22	41 A. WAGNER	12.034	22	89 A. IRWIN	11.369	22	47 A. BASSANI	24.379
23	63 Z. KHAIRUDDIN	20.060	23	71 C. BERGMAN	25.278	23	25 A. BALDOLINI	12.037	23	10 N. CALERO	11.371	23	83 L. EPIS	24.416
24	83 L. EPIS	20.104	24	63 Z. KHAIRUDDIN	25.290	24	7 A. LICCIARDI	12.043	24	63 Z. KHAIRUDDIN	11.380	24	41 A. WAGNER	24.420
25	71 C. BERGMAN	20.111	25	23 C. TANGRE	25.457	25	87 L. ZANETTI	12.060	25	71 C. BERGMAN	11.400	25	77 K. RYDE	24.447
26	23 C. TANGRE	20.153	26	10 N. CALERO	25.483	26	12 C. GOBBI	12.081	26	12 C. GOBBI	11.426	26	50 B. ORTT	24.492
27	10 N. CALERO	20.194	27	96 J. ORELLANA	25.486	27	88 N. TEROL	12.094	27	47 A. BASSANI	11.490	27	74 J. VAN SIKKELER	24.529
28	7 A. LICCIARDI	20.220	28	12 C. GOBBI	25.522	28	74 J. VAN SIKKELER	12.115	28	83 L. EPIS	11.492	28	10 N. CALERO	24.544
29	6 D. STIRPE	20.256	29	83 L. EPIS	25.531	29	83 L. EPIS	12.124	29	74 J. VAN SIKKELER	11.498	29	12 C. GOBBI	24.559
30	35 S. HILL	20.345	30	7 A. LICCIARDI	25.567	30	10 N. CALERO	12.125	30	23 C. TANGRE	11.516	30	96 J. ORELLANA	24.630
31	74 J. VAN SIKKELER	20.353	31	68 G. SCOTT	25.620	31	68 G. SCOTT	12.145	31	50 B. ORTT	11.517	31	6 D. STIRPE	24.685
32	68 G. SCOTT	20.398	32	74 J. VAN SIKKELER	25.664	32	6 D. STIRPE	12.156	32	35 S. HILL	11.536	32	7 A. LICCIARDI	24.743
33	96 J. ORELLANA	20.452	33	6 D. STIRPE	25.719	33	35 S. HILL	12.168	33	6 D. STIRPE	11.653	33	68 G. SCOTT	24.764
34	12 C. GOBBI	20.461	34	35 S. HILL	25.777	34	96 J. ORELLANA	12.181	34	68 G. SCOTT	11.660	34	23 C. TANGRE	24.794
35	50 B. ORTT	20.523	35	50 B. ORTT	25.890	35	50 B. ORTT	12.362	35	7 A. LICCIARDI	11.785	35	35 S. HILL	24.827

29/05/2016

These data/results cannot be reproduced, stored and/or transmitted in whole or in part by any manner of electronic, mechanical, photocopying, recording, broadcasting or otherwise now known or herein after developed without the previous express consent by the copyright owner, except for reproduction in daily press and regular printed publications on sale to the public within 60 days of the event related to those data/results and always provided that copyright symbol appears together as follows below.

© DORNA WSBK ORGANIZATION Srl 2016



## UK Round, 27-28-29 May 2016

### World Supersport - Ideal Times Warm Up

No.	Rider	Nat	Bike	Seg. 1 Diff. 1	Seg. 2 Diff. 2	Seg. 3 Diff. 3	Seg. 4 Diff. 4	Seg. 5 Diff. 5	Ideal Time Best Lap	Pos.	Diff.
1	1 K. SOFUOGLU	TUR	Kawasaki ZX-6R	19.555 0.159	24.740 0.151	11.826 0.027	11.063	23.703 0.051	1'30.887 1'31.275	1	0.388
2	2 P. JACOBSEN	USA	Honda CBR600RR	19.610 0.154	24.792	11.822 0.011	10.982	23.962	1'31.168 1'31.333	2	0.165
3	21 R. KRUMMENACHER	SUI	Kawasaki ZX-6R	19.694	24.688 0.057	11.832 0.210	11.011	23.952	1'31.177 1'31.444	4	0.267
4	81 L. STAPLEFORD	GBR	Triumph Daytona 675	19.831	24.691	11.702 0.098	11.126	23.993	1'31.343 1'31.441	3	0.098
5	64 F. CARICASULO	ITA	Honda CBR600RR	19.750 0.164	24.766	11.782	11.256 0.060	23.855 0.088	1'31.409 1'31.721	5	0.312
6	86 A. BADOVINI	ITA	Honda CBR600RR	19.760 0.148	24.828 0.082	11.915	11.142 0.064	23.783 0.094	1'31.428 1'31.816	6	0.388
7	16 J. CLUZEL	FRA	MV Agusta F3 675	19.778	24.756 0.121	11.930	11.301	23.974	1'31.739 1'31.860	7	0.121
8	11 C. GAMARINO	ITA	Kawasaki ZX-6R	19.795 0.032	24.784 0.190	11.901 0.156	11.239 0.048	24.044	1'31.763 1'32.189	9	0.426
9	4 G. REA	GBR	MV Agusta F3 675	19.903 0.168	25.060 0.031	11.996 0.121	11.188 0.011	23.642	1'31.789 1'32.120	8	0.331
10	111 K. SMITH	GBR	Honda CBR600RR	19.845 0.124	24.960 0.171	11.960 0.015	11.183 0.140	23.981	1'31.929 1'32.379	10	0.450
11	25 A. BALDOLINI	ITA	MV Agusta F3 675	19.903 0.031	24.929 0.033	12.037	11.253 0.087	23.948 0.273	1'32.070 1'32.494	12	0.424
12	87 L. ZANETTI	ITA	MV Agusta F3 675	19.892 0.142	25.071 0.081	12.060 0.062	11.185	23.897	1'32.105 1'32.390	11	0.285
13	55 I. MIKHALCHIK	UKR	Kawasaki ZX-6R	19.958	25.159	11.909 0.181	11.203 0.169	24.110	1'32.339 1'32.689	14	0.350
14	69 O. JEZEK	CZE	Kawasaki ZX-6R	19.786	25.233 0.329	11.954 0.068	11.295	24.080	1'32.348 1'32.745	16	0.397
15	44 R. ROLFO	ITA	MV Agusta F3 675	19.899 0.035	25.170 0.051	12.029 0.140	11.183	24.099	1'32.380 1'32.606	13	0.226
16	61 A. ZACCONE	ITA	Kawasaki ZX-6R	20.051	25.097 0.026	11.865 0.089	11.272 0.021	24.266 0.004	1'32.551 1'32.691	15	0.140
17	41 A. WAGNER	AUS	MV Agusta F3 675	19.905	25.037	12.034 0.094	11.243 0.150	24.420	1'32.639 1'32.883	18	0.244
18	88 N. TEROL	ESP	MV Agusta F3 675	19.939	24.951 0.221	12.094 0.053	11.311 0.105	24.352 0.020	1'32.647 1'33.046	20	0.399
19	89 A. IRWIN	GBR	Yamaha YZF R6	19.927 0.158	25.263 0.039	11.871 0.178	11.369 0.077	24.252	1'32.682 1'33.134	21	0.452
20	78 H. OKUBO	JPN	Honda CBR600RR	20.054	25.104	12.020 0.052	11.271 0.122	24.240	1'32.689 1'32.863	17	0.174
21	47 A. BASSANI	ITA	Kawasaki ZX-6R	20.042 0.089	25.033 0.110	11.774	11.490 0.011	24.379 0.078	1'32.718 1'33.006	19	0.288
22	77 K. RYDE	GBR	MV Agusta F3 675	19.905 0.102	25.215 0.025	11.942 0.273	11.256 0.024	24.447 0.019	1'32.765 1'33.208	22	0.443
23	63 Z. KHAIRUDDIN	MAS	Kawasaki ZX-6R	20.060 0.126	25.290	11.978	11.380 0.251	24.177	1'32.885 1'33.262	23	0.377
24	71 C. BERGMAN	SWE	Honda CBR600RR	20.111 0.008	25.278 0.092	12.015	11.400 0.096	24.108 0.267	1'32.912 1'33.375	24	0.463
25	83 L. EPIS	AUS	Kawasaki ZX-6R	20.104 0.015	25.531 0.020	12.124 0.040	11.492 0.016	24.416	1'33.667 1'33.758	25	0.091
26	10 N. CALERO	ESP	Kawasaki ZX-6R	20.194 0.049	25.483 0.028	12.125 0.029	11.371 0.072	24.544	1'33.717 1'33.895	26	0.178
27	23 C. TANGRE	FRA	Suzuki GSX-R600	20.153 0.005	25.457	12.008 0.140	11.516 0.041	24.794	1'33.928 1'34.114	27	0.186
28	12 C. GOBBI	ITA	Yamaha YZF R6	20.461	25.522 0.233	12.081	11.426 0.299	24.559	1'34.049 1'34.581	29	0.532
29	96 J. ORELLANA	ESP	Honda CBR600RR	20.452 0.093	25.486 0.022	12.181 0.137	11.304	24.630	1'34.053 1'34.305	28	0.252
30	74 J. VAN SIKKELERUS	NED	Yamaha YZF R6	20.353 0.303	25.664 0.200	12.115 0.173	11.498	24.529	1'34.159 1'34.835	32	0.676
31	7 A. LICCIARDI	BEL	Kawasaki ZX-6R	20.220	25.567 0.084	12.043 0.247	11.785	24.743	1'34.358 1'34.689	31	0.331

29/05/2016

These data/results cannot be reproduced, stored and/or transmitted in whole or in part by any manner of electronic, mechanical, photocopying, recording, broadcasting or otherwise now known or herein after developed without the previous express consent by the copyright owner, except for reproduction in daily press and regular printed publications on sale to the public within 60 days of the event related to those data/results and always provided that copyright symbol appears together as follows below.  
© DORNA WSBK ORGANIZATION Srl 2016

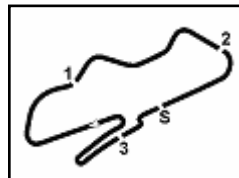
FICR PERUGIA TIMING



Official Tyre Supplier



Official Timekeeper



Donington Park 4.023 m

## UK Round, 27-28-29 May 2016

### World Supersport - Ideal Times Warm Up

2 / 2

No. Rider	Nat	Bike	Seg. 1 Diff. 1	Seg. 2 Diff. 2	Seg. 3 Diff. 3	Seg. 4 Diff. 4	Seg. 5 Diff. 5	Ideal Time		
								Best Lap	Pos.	Diff.
32 <b>6 D. STIRPE</b>	ITA	Kawasaki ZX-6R	20.256 0.122	25.719	12.156	11.653	24.685	<b>1'34.469</b> 1'34.591	30	0.122
33 <b>68 G. SCOTT</b>	AUS	Honda CBR600RR	20.398 0.271	25.620 0.045	12.145 0.108	11.660 0.095	24.764	<b>1'34.587</b> 1'35.106	35	0.519
34 <b>35 S. HILL</b>	GBR	Honda CBR600RR	20.345	25.777 0.149	12.168 0.190	11.536 0.104	24.827	<b>1'34.653</b> 1'35.096	34	0.443
35 <b>50 B. ORTT</b>	CAN	Honda CBR600RR	20.523	25.890	12.362 0.090	11.517 0.007	24.492	<b>1'34.784</b> 1'34.881	33	0.097
<b>Overall Ideal Time</b>			19.555	24.688	11.702	10.982	23.642	<b>1'30.569</b>		

29/05/2016

These data/results cannot be reproduced, stored and/or transmitted in whole or in part by any manner of electronic, mechanical, photocopying, recording, broadcasting or otherwise now known or herein after developed without the previous express consent by the copyright owner, except for reproduction in daily press and regular printed publications on sale to the public within 60 days of the event related to those data/results and always provided that copyright symbol appears together as follows below.  
© DORNA WSBK ORGANIZATION Srl 2016

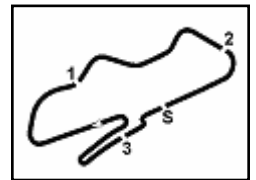
FICR PERUGIA TIMING



Official Tyre Supplier



Official Timekeeper



## UK Round, 27-28-29 May 2016

### World Supersport - Chronological Analysis Warm Up

1° 1 K. SOFUOGLU (1'31.275)								
Lap	Seg. 1	Seg. 2	Seg. 3	Seg. 4	Seg. 5	Lap Time	km/h	Local Time
1	19.826	26.008	12.165	11.503	24.274	1'31.816	234.3	9:01'37.950
2	19.704	25.099	11.887	11.210	23.794	1'31.816	236.8	9:03'09.766
3	19.686	24.888	<b>11.826</b>	11.171	23.761	1'31.350	<b>238.4</b>	9:04'41.116
4	19.714	24.850	11.858	11.231	23.900	1'31.525	236.3	9:06'12.641
5	19.714	24.891	11.853	<b>11.063</b>	23.754	1'31.275	237.9	9:07'43.916
6	19.706	25.003	13.306	12.241	27.863	1'38.119 P	203.4	9:09'22.035
7	1'17.187	29.709	13.294	12.232	24.026	2'36.448 P	190.8	9:11'58.483
8	19.834	24.827	11.906	11.101	<b>23.703</b>	1'31.371	236.8	9:13'29.854
9	<b>19.555</b>	<b>24.740</b>	11.966	11.125	24.320	1'31.706	237.4	9:15'01.560

2° 2 P. JACOBSEN (1'31.333)								
Lap	Seg. 1	Seg. 2	Seg. 3	Seg. 4	Seg. 5	Lap Time	km/h	Local Time
1	20.169	26.535	12.382	11.620	25.107	1'33.011	238.9	9:02'27.469
2	19.708	25.252	11.917	11.336	24.337	1'33.011	240.0	9:04'00.480
3	19.685	25.045	11.852	11.259	24.110	1'31.974	240.0	9:05'32.454
4	19.685	25.058	<b>11.822</b>	11.153	24.040	1'31.758	241.1	9:07'04.212
5	19.764	<b>24.792</b>	11.833	<b>10.982</b>	<b>23.962</b>	1'31.333	<b>241.6</b>	9:08'35.545
6	19.801	25.096	14.925	13.429	24.829	1'38.080	198.5	9:10'13.625
7	19.901	24.888	11.983	11.072	23.992	1'31.836	236.3	9:11'45.461
8	19.793	24.845	11.933	11.069	24.223	1'31.863	241.1	9:13'17.324
9	<b>19.610</b>	24.880	<b>11.822</b>	11.028	24.273	1'31.613	240.5	9:14'48.937
10	20.170	24.937	11.896	10.985	24.011	1'31.999	238.9	9:16'20.936

3° 81 L. STAPLEFORD (1'31.441)								
Lap	Seg. 1	Seg. 2	Seg. 3	Seg. 4	Seg. 5	Lap Time	km/h	Local Time
1	20.230	27.138	12.227	11.874	24.966	1'33.369	236.8	9:02'33.690
2	19.944	25.301	11.970	11.492	24.376	1'32.502	241.1	9:03'57.059
3	19.886	24.946	11.819	11.363	24.430	1'32.502	241.1	9:05'29.561
4	19.886	24.905	11.723	11.374	24.222	1'32.110	<b>242.2</b>	9:07'01.671
5	19.870	25.275	<b>11.702</b>	11.392	24.581	1'32.820	240.5	9:08'34.491
6	19.898	25.072	11.783	11.231	24.136	1'32.120	241.1	9:10'06.611
7	20.291	24.945	11.847	11.183	24.628	1'32.894	238.4	9:11'39.505
8	<b>19.831</b>	<b>24.691</b>	11.800	<b>11.126</b>	<b>23.993</b>	1'31.441	241.1	9:13'10.946
9	19.841	25.011	12.097	11.361	24.492	1'32.802	235.3	9:14'43.748
10	20.158	25.173	12.168	11.414	24.285	1'33.198	236.3	9:16'16.946

4° 21 R. KRUMMENACHER (1'31.444)								
Lap	Seg. 1	Seg. 2	Seg. 3	Seg. 4	Seg. 5	Lap Time	km/h	Local Time
1	20.222	28.022	12.460	12.179	26.768	1'32.952	234.8	9:02'07.885
2	19.817	25.282	12.052	11.240	24.156	1'32.330	237.9	9:03'40.837
3	19.795	24.895	11.904	11.228	23.994	1'31.816	233.3	9:06'44.983
4	19.763	24.694	<b>11.832</b>	11.069	24.130	1'31.488	<b>239.5</b>	9:08'16.471
5	19.903	25.443	12.138	11.349	24.338	1'33.171	232.3	9:09'49.642
6	19.809	24.942	12.039	11.150	23.981	1'31.921	233.8	9:11'21.563
7	19.719	<b>24.688</b>	12.065	11.072	24.118	1'31.662	233.8	9:12'53.225
8	19.721	24.811	11.957	11.049	24.054	1'31.592	233.8	9:14'24.817
9	<b>19.694</b>	24.745	12.042	<b>11.011</b>	<b>23.952</b>	1'31.444	234.3	9:15'56.261

5° 64 F. CARICASULO (1'31.721)								
Lap	Seg. 1	Seg. 2	Seg. 3	Seg. 4	Seg. 5	Lap Time	km/h	Local Time
1	19.848	25.732	12.128	11.555	24.340	1'31.926	234.8	9:01'38.262
2	19.750	24.998	11.863	11.362	<b>23.855</b>	1'31.926	236.8	9:03'10.188
3	19.884	24.951	11.837	11.298	25.181	1'40.017	238.4	9:04'50.205
4	19.914	25.083	11.929	11.523	24.131	1'32.580	239.5	9:06'22.785
5	19.914	<b>24.766</b>	<b>11.782</b>	11.316	23.943	1'31.721	239.5	9:07'54.506
6	20.029	24.900	11.796	11.507	24.259	1'32.491	<b>240.0</b>	9:09'26.997
7	19.790	24.874	11.957	11.351	23.894	1'31.866	236.8	9:10'58.863
8	20.136	25.017	12.006	<b>11.256</b>	23.974	1'32.389	235.8	9:12'31.252
9	20.409	31.209	12.676	11.816	29.279	1'45.389 P	231.8	9:14'16.641

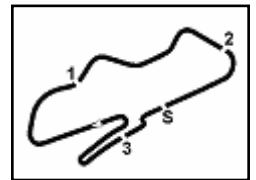
6° 86 A. BADOVINI (1'31.816)								
Lap	Seg. 1	Seg. 2	Seg. 3	Seg. 4	Seg. 5	Lap Time	km/h	Local Time
1	20.145	27.270	12.333	11.738	24.732	1'33.303	230.8	9:02'23.952
2	19.884	25.442	12.032	11.457	24.227	1'33.303	230.8	9:03'57.255
3	19.884	28.423	12.392	11.432	23.962	1'36.093	231.3	9:05'33.348
4	19.908	24.910	<b>11.915</b>	11.206	23.877	1'31.816	<b>234.8</b>	9:07'05.164
5	19.888	25.048	11.965	<b>11.142</b>	<b>23.783</b>	1'31.826	234.3	9:08'36.990
6	19.921	24.997	11.993	11.716	28.484	1'37.111	<b>234.8</b>	9:10'14.101
7	19.895	25.027	12.006	11.200	23.795	1'31.923	232.3	9:11'46.024
8	<b>19.760</b>	<b>24.828</b>	12.045	11.268	24.563	1'32.464	234.3	9:13'18.488
9	20.304	25.772	12.199	11.360	24.663	1'34.298	231.3	9:14'52.786
10	19.833	25.107	12.215	11.332	24.039	1'32.526	230.3	9:16'25.312

7° 16 J. CLUZEL (1'31.860)								
Lap	Seg. 1	Seg. 2	Seg. 3	Seg. 4	Seg. 5	Lap Time	km/h	Local Time
1	21.044	28.551	12.552	11.896	28.387	1'34.199	239.5	9:01'59.421
2	19.812	25.525	12.025	11.425	24.180	1'34.199	239.5	9:03'33.620
3	19.868	25.035	11.994	12.861	31.181	1'40.883	<b>244.9</b>	9:05'14.503
4	19.868	25.303	12.024	11.330	30.056	1'38.581	240.0	9:06'53.084
5	19.958	25.081	12.013	11.311	24.082	1'32.445	240.0	9:08'25.529
6	23.152	27.555	16.992	12.022	28.665	1'48.386		9:10'13.915
7	19.920	25.303	11.968	11.458	24.050	1'32.699	242.2	9:11'46.614
8	19.812	<b>24.756</b>	12.428	11.965	25.066	1'34.027	233.3	9:13'20.641
9	<b>19.778</b>	24.877	<b>11.930</b>	<b>11.301</b>	<b>23.974</b>	1'31.860	242.7	9:14'52.501
10	19.837	27.620	14.042	12.226	30.229	1'43.954 P	226.4	9:16'36.455

8° 4 G. REA (1'32.120)								
Lap	Seg. 1	Seg. 2	Seg. 3	Seg. 4	Seg. 5	Lap Time	km/h	Local Time
1	20.182	28.018	12.340	11.946	24.895	1'33.358	236.8	9:02'20.382
2	19.982	25.548	12.061	11.416	24.151	1'33.358	236.8	9:03'53.740
3	19.982	25.227	<b>11.996</b>	11.294	23.950	1'32.449	238.4	9:05'26.189
4	20.033	25.083	12.028	11.250	23.823	1'32.217	237.4	9:06'58.406
5	19.990	<b>25.060</b>	12.026	11.205	24.034	1'32.315	<b>239.5</b>	9:08'30.721
6	20.631	25.960	12.149	11.226	23.862	1'33.828	236.8	9:10'04.549
7	<b>19.903</b>	25.458	12.011	11.408	24.317	1'33.097	<b>239.5</b>	9:11'37.646
8	20.071	25.091	12.117	11.199	<b>23.642</b>	1'32.120	235.8	9:13'09.766
9	20.048	25.114	12.228	<b>11.188</b>	23.766	1'32.344	235.3	9:14'42.110
10	20.523	25.546	12.374	11.575	25.475	1'35.493	231.8	9:16'17.603

9° 11 C. GAMARINO (1'32.189)								
Lap	Seg. 1	Seg. 2	Seg. 3	Seg. 4	Seg. 5	Lap Time	km/h	Local Time
1	20.621	27.142	12.030	12.022	24.743	1'33.516	234.3	9:01'43.350
2	19.829	25.205	12.095	11.269	24.326	1'33.516	234.3	9:03'16.866
3	20.063	24.931	11.927	11.436	24.196	1'32.319	234.8	9:04'49.185
4	19.892	26.925	15.115	14.883	39.157	1'56.143		9:06'45.328
5	19.892	<b>24.784</b>	11.959	11.330	24.578	1'32.543	<b>236.8</b>	9:08'17.871
6	19.819	25.542	<b>11.901</b>	11.295	24.561	1'33.118	235.8	9:09'50.989
7	19.827	24.974	12.057	11.287	<b>24.044</b>	1'32.189	233.3	9:11'23.178
8	<b>19.795</b>	24.855	12.078	<b>11.239</b>	24.504	1'32.471	234.8	9:12'55.649
9	20.438	25.148	12.113	11.298	24.624	1'33.621	231.8	9:14'29.270
10	21.205	25.932	12.330	11.476	24.589	1'35.532	230.3	9:16'04.802

10° 111 K. SMITH (1'32.379)								
Lap	Seg. 1	Seg. 2	Seg. 3	Seg. 4	Seg. 5	Lap Time	km/h	Local Time
1	20.525	27.224	12.327	11.706	24.931	1'34.091	<b>235.3</b>	9:01'41.895
2	20.114	25.613	12.040	11.445	24.468	1'34.091	<b>235.3</b>	9:03'15.986
3	20.114	25.320	12.048	11.252	24.262	1'32.996	233.8	9:04'48.982
4	20.052	25.234	12.022	11.354	23.999	1'32.661	232.8	9:06'21.643
5	19.969	25.131	11.975	11.323	<b>23.981</b>	1'32.379	233.8	9:07'54.022
6	19.958	25.241	<b>11.960</b>	11.270	24.277	1'32.706	231.8	9:09'26.728
7	<b>19.845</b>	<b>24.960</b>	12.084	11.478	24.234	1'32.601	231.8	9:10'59.329
8	19.956	25.152	12.005	11.190	24.194	1'32.497	234.8	9:12'31.826</



## UK Round, 27-28-29 May 2016

### World Supersport - Chronological Analysis Warm Up

13° 44 R. ROLFO (1'32.606)								
Lap	Seg. 1	Seg. 2	Seg. 3	Seg. 4	Seg. 5	Lap Time	km/h	Local Time
1	20.405	27.121	12.391	11.828	24.815	1'34.758	230.8	9:01'41.608
2	20.051	25.702	12.209	11.473	24.969	1'33.391	236.8	9:04'49.757
3	20.112	25.204	12.059	11.990	24.232	1'33.597	235.3	9:06'23.354
4	19.899	25.280	12.029	11.256	24.285	1'33.028	236.3	9:07'56.103
5	20.078	25.270	12.125	11.248	24.307	1'33.028	234.3	9:09'29.131
6	19.991	25.342	12.232	11.320	24.129	1'33.014	235.3	9:11'02.145
7	20.149	25.544	12.277	13.020	25.944	1'36.934	233.3	9:12'39.079
8	19.934	25.221	12.169	11.183	24.099	1'32.606	233.8	9:14'11.685
9	19.920	25.170	12.219	11.340	24.210	1'32.859	232.8	9:15'44.544

14° 55 I. MIKHALCHIK (1'32.689)								
Lap	Seg. 1	Seg. 2	Seg. 3	Seg. 4	Seg. 5	Lap Time	km/h	Local Time
1	20.861	26.349	12.202	11.532	25.268	1'36.212	230.8	9:03'30.187
2	20.867	26.092	13.076	12.367	24.576	1'36.978	230.8	9:05'07.165
3	20.140	25.691	12.234	11.719	24.709	1'34.493	235.3	9:06'41.658
4	20.156	25.795	11.909	11.509	24.325	1'33.694	237.9	9:08'15.352
5	20.312	33.509	12.371	11.486	24.440	1'42.118	231.3	9:09'57.470
6	19.958	25.159	12.090	11.372	24.110	1'32.689	230.3	9:11'30.159
7	20.256	25.176	12.092	11.203	24.184	1'32.911	231.3	9:13'03.070
8	20.311	26.245	12.364	11.943	27.082	1'37.945	226.4	9:14'41.015
9	20.277	25.329	12.149	11.479	25.052	1'34.286	231.8	9:16'15.301

15° 61 A. ZACCONE (1'32.691)								
Lap	Seg. 1	Seg. 2	Seg. 3	Seg. 4	Seg. 5	Lap Time	km/h	Local Time
1	22.311	26.352	12.249	11.801	25.639	1'38.352	233.8	9:03'32.192
2	20.269	25.515	12.040	11.565	24.854	1'34.243	240.0	9:05'06.435
3	20.514	26.911	15.681	13.332	27.139	1'43.577	238.9	9:06'50.012
4	20.421	25.466	11.865	11.696	24.535	1'33.983	238.9	9:08'23.995
5	20.051	25.123	11.954	11.293	24.270	1'32.691	233.3	9:09'56.686
6	20.063	25.097	11.995	11.272	24.274	1'32.701	233.3	9:11'29.387
7	20.070	25.133	12.072	11.340	24.266	1'32.881	234.8	9:13'02.268
8	20.773	27.249	12.592	12.129	25.837	1'38.580	232.3	9:14'40.848
9	20.227	25.321	12.184	11.381	25.200	1'34.313	232.3	9:16'15.161

16° 69 O. JEZEK (1'32.745)								
Lap	Seg. 1	Seg. 2	Seg. 3	Seg. 4	Seg. 5	Lap Time	km/h	Local Time
1	3'49.416	27.613	12.675	12.205	28.840	5'10.749 P	229.8	9:07'21.163
2	1'27.917	26.513	12.229	11.615	24.663	2'42.937 P	232.8	9:10'04.100
3	20.148	25.398	12.205	11.402	25.040	1'34.193	230.8	9:11'38.293
4	19.999	25.233	11.954	11.366	24.573	1'33.125	237.9	9:13'11.418
5	19.786	25.562	12.022	11.295	24.080	1'32.745	234.3	9:14'44.163
6	21.051	26.537	12.298	11.638	28.184	1'39.708	229.3	9:16'23.871

17° 78 H. OKUBO (1'32.863)								
Lap	Seg. 1	Seg. 2	Seg. 3	Seg. 4	Seg. 5	Lap Time	km/h	Local Time
1	21.231	26.990	12.154	12.066	25.045	1'35.540	231.3	9:03'18.791
2	20.255	25.286	12.061	11.301	24.510	1'33.413	234.8	9:04'52.204
3	20.186	25.439	12.020	11.378	24.503	1'33.526	233.3	9:06'25.730
4	20.739	26.106	12.119	11.474	29.800	1'40.238 P	231.8	9:08'05.968
5	1'44.331	25.329	12.051	11.271	24.312	2'57.294 P	233.3	9:11'03.262
6	20.054	25.104	12.072	11.393	24.240	1'32.863	233.8	9:12'36.125
7	20.114	25.364	12.229	11.369	24.498	1'33.574	231.3	9:14'09.699
8	20.176	25.872	12.228	11.507	24.591	1'34.374	230.8	9:15'44.073

18° 41 A. WAGNER (1'32.883)								
Lap	Seg. 1	Seg. 2	Seg. 3	Seg. 4	Seg. 5	Lap Time	km/h	Local Time
1	20.459	27.219	12.313	12.182	25.649	1'34.607	234.8	9:02'19.841
2	20.148	25.161	12.066	11.581	24.705	1'33.661	236.8	9:03'54.448
3	19.905	25.037	12.128	11.393	24.420	1'32.883	235.8	9:05'28.109
4	20.024	25.114	12.196	11.352	24.582	1'33.268	235.3	9:07'00.992
5	20.267	25.197	12.049	11.521	24.649	1'33.683	236.8	9:08'34.260
6	20.546	25.332	12.088	11.532	24.636	1'34.134	234.3	9:10'07.943
7	20.356	25.212	12.086	11.243	24.594	1'33.491	235.8	9:11'42.077
8	20.028	25.296	12.126	11.420	24.893	1'33.763	232.8	9:13'15.568
9	20.166	25.339	12.034	11.586	24.543	1'33.668	237.4	9:14'49.331

19° 47 A. BASSANI (1'33.006)								
Lap	Seg. 1	Seg. 2	Seg. 3	Seg. 4	Seg. 5	Lap Time	km/h	Local Time
1	20.459	27.219	12.313	12.182	25.649	1'34.607	234.8	9:02'19.841
2	20.148	25.161	12.066	11.581	24.705	1'33.661	236.8	9:03'54.448
3	19.905	25.037	12.128	11.393	24.420	1'32.883	235.8	9:05'28.109
4	20.024	25.114	12.196	11.352	24.582	1'33.268	235.3	9:07'00.992
5	20.267	25.197	12.049	11.521	24.649	1'33.683	236.8	9:08'34.260
6	20.546	25.332	12.088	11.532	24.636	1'34.134	234.3	9:10'07.943
7	20.356	25.212	12.086	11.243	24.594	1'33.491	235.8	9:11'42.077
8	20.028	25.296	12.126	11.420	24.893	1'33.763	232.8	9:13'15.568
9	20.166	25.339	12.034	11.586	24.543	1'33.668	237.4	9:14'49.331

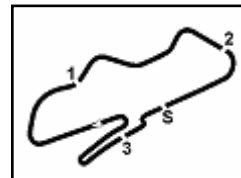
1	20.462	27.997	12.357	12.289	26.952	1'34.033	238.4	9:02'08.345
2	20.131	25.143	11.774	11.501	24.566	1'33.006	242.7	9:03'42.378
3	20.042	25.039	11.967	11.607	24.400	1'33.055	240.0	9:05'15.384
4	20.293	25.177	11.880	11.490	24.402	1'33.242	239.5	9:06'48.439
5	20.266	25.033	11.838	11.510	24.423	1'33.070	239.5	9:08'21.681
6	20.200	25.088	12.018	11.680	24.402	1'33.388	235.8	9:09'54.751
7	22.698	25.521	12.058	11.562	24.379	1'36.218	237.9	9:11'28.139
8	20.287	25.212	12.119	11.587	24.524	1'33.729	233.8	9:13'04.357
9	20.217	25.200	11.963	11.624	24.629	1'33.633	240.0	9:14'38.086

20° 88 N. TEROL (1'33.046)								
Lap	Seg. 1	Seg. 2	Seg. 3	Seg. 4	Seg. 5	Lap Time	km/h	Local Time
1	20.397	27.231	12.561	13.047	26.167	1'34.044	227.8	9:02'21.200
2	20.030	25.464	12.169	11.480	24.534	1'33.182	236.8	9:03'55.244
3	22.617	26.740	12.487	11.574	24.368	1'37.786	227.4	9:05'28.426
4	19.939	25.172	12.147	11.416	24.372	1'33.046	234.3	9:07'06.212
5	20.072	25.058	12.166	11.385	24.377	1'33.058	235.3	9:08'39.258
6	19.956	25.146	12.256	11.355	24.352	1'33.065	232.3	9:10'12.316
7	20.088	24.951	12.152	11.311	24.554	1'33.056	237.9	9:11'45.381
8	29.512	27.068	12.253	11.361	24.463	1'44.657	232.3	9:13'18.437
9								9:15'03.094

21° 89 A. IRWIN (1'33.134)								
Lap	Seg. 1	Seg. 2	Seg. 3	Seg. 4	Seg. 5	Lap Time	km/h	Local Time
1	20.585	27.149	12.423	12.111	25.668	1'34.407	230.3	9:02'12.370
2	20.342	25.612	12.016	11.633	24.561	1'34.054	233.8	9:03'46.777
3	20.035	28.235	15.075	12.561	24.641	1'40.854	236.8	9:05'27.633
4	20.035	25.402	12.265	11.369	24.631	1'33.702	236.8	9:07'01.331
5	19.927	25.329	11.946	11.696	24.621	1'33.519	236.8	9:08'34.852
6	20.039	25.263	11.871	11.571	24.611	1'33.355	237.9	9:10'08.207
7	20.085	25.302	12.049	11.446	24.252	1'33.134	234.3	9:11'41.341
8	20.285	25.428	12.242	11.423	24.355	1'33.733	230.3	9:13'15.074
9	20.082	25.498	12.217	11.415	24.507	1'33.719	230.3	9:14'48.793
9	20.525	25.399	12.066	11.434	24.526	1'33.950	232.3	9:16'22.743

22° 77 K. RYDE (1'33.208)								
Lap	Seg. 1	Seg. 2	Seg. 3	Seg. 4	Seg. 5	Lap Time	km/h	Local Time
1	20.816	27.124	12.217	11.706	25.711	1'34.518	233.8	9:01'59.837
2	20.244	25.605	11.942	11.389	24.766	1'34.518	240.0	9:03'34.355
3	20.244	27.768	13.613	11.877	25.514	1'39.016	219.1	9:05'13.371
4	20.119	25.344	12.001	11.486	24.447	1'33.397	230.8	9:06'46.768
5	20.124	25.215	12.021	11.375	24.508	1'33.243	237.4	9:08'20.011
6	20.244	26.100	12.294	11.427	25.194	1'35.259	230.3	9:09'55.270
7	19.905	25.568	12.183	11.340	24.519	1'33.515	230.8	9:11'28.785
8	20.007	25.240	12.215	11.280	24.466	1'33.208	234.3	9:13'01.993
9	20.281	25.351	12.219	11.256	25.450	1'34.557	231.8	9:14'36.550
9	20.059	25.510	12.293	11.324	24.479	1'33.665	226.4	9:16'10.215

||
||
||



Donington Park 4.023 m

## UK Round, 27-28-29 May 2016

### World Supersport - Chronological Analysis Warm Up

3 / 3

Lap	Seg. 1	Seg. 2	Seg. 3	Seg. 4	Seg. 5	Lap Time	km/h	Local Time
1	21.243	28.007	12.635	11.954	25.523	233.3	9:01'43.113	
2	20.699	26.735	12.267	11.919	25.312	1'37.476	232.8	9:03'20.589
3	20.425	25.763	12.195	12.033	25.028	1'34.835	232.3	9:04'55.424
4	20.316	25.716	12.181	11.610	24.670	1'35.444	<b>233.8</b>	9:06'30.868
5	20.119	25.551	12.164	11.508	<b>24.416</b>	1'33.758	231.8	9:09'39.119
6	20.361	27.037	12.479	11.635	25.218	1'36.730	230.3	9:11'15.849
7	<b>20.104</b>	<b>25.531</b>	12.143	11.601	25.288	1'34.667	230.3	9:12'50.516
8	27.480	26.652	12.370	11.845	24.968	1'43.315	229.3	9:14'33.831
9	20.330	26.134	14.038	12.074	24.626	1'37.202	213.4	9:16'11.033

26° 10 N. CALERO (1'33.895)								
Lap	Seg. 1	Seg. 2	Seg. 3	Seg. 4	Seg. 5	Lap Time	km/h	Local Time
		27.637	12.291	11.719	25.245	233.3	9:02'10.366	
1	20.476	26.255	12.247	11.639	25.117	1'35.734	232.3	9:03'46.100
2	20.557	25.669	12.229	12.314	24.693	1'35.462	236.3	9:05'21.562
3	20.248	25.524	12.126	11.428	24.721	1'34.047	235.3	9:06'55.609
4	20.352	<b>25.483</b>	<b>12.125</b>	12.405	24.937	1'34.942	<b>236.8</b>	9:08'30.551
5	20.925	26.617	12.505	11.609	26.717	1'38.373	232.3	9:10'08.924
6	20.243	25.511	12.154	11.443	<b>24.544</b>	1'33.895	231.8	9:11'42.819
7	<b>20.194</b>	25.787	12.533	11.683	25.758	1'35.955	234.8	9:13'18.774
8	20.257	26.005	12.240	11.696	24.796	1'34.994	233.3	9:14'53.768
9	21.216	26.017	12.264	11.371	24.654	1'35.522	233.3	9:16'29.290

27° 23 C. TANGRE (1'34.114)								
Lap	Seg. 1	Seg. 2	Seg. 3	Seg. 4	Seg. 5	Lap Time	km/h	Local Time
		27.739	12.309	12.095	25.565	235.8	9:01'44.973	
1	20.693	26.051	12.347	12.253	25.454	1'36.798	231.8	9:03'21.771
2	20.493	26.089	12.178	13.926	33.077	1'45.763	235.3	9:05'07.534
3	20.394	25.641	12.038	11.902	24.963	1'34.938	<b>236.8</b>	9:06'42.472
4	20.287	25.716	<b>12.008</b>	11.518	25.376	1'34.905	236.3	9:08'17.377
5	<b>20.153</b>	26.127	12.079	<b>11.516</b>	24.894	1'34.769	235.3	9:09'52.146
6	20.246	25.576	12.111	11.659	25.046	1'34.638	234.8	9:11'26.784
7	20.465	25.736	12.227	11.577	24.854	1'34.859	232.3	9:13'01.643
8	21.160	27.102	12.306	11.981	25.118	1'37.667	234.8	9:14'39.310
9	20.158	<b>25.457</b>	12.148	11.557	<b>24.794</b>	1'34.114	232.8	9:16'13.424

28° 96 J. ORELLANA (1'34.305)								
Lap	Seg. 1	Seg. 2	Seg. 3	Seg. 4	Seg. 5	Lap Time	km/h	Local Time
		27.999	12.431	12.330	26.968	230.8	9:02'08.657	
1	21.008	26.202	12.231	11.788	25.637	1'36.866	231.8	9:03'45.523
2	20.669	25.940	12.302	12.449	25.570	1'36.930	<b>233.3</b>	9:05'22.453
3	<b>20.452</b>	25.650	12.224	11.615	34.360	1'44.301	232.8	9:07'06.754
4	20.470	25.800	12.186	11.440	24.935	1'34.831	230.8	9:08'41.585
5	20.784	26.273	12.326	11.481	25.077	1'35.941	229.3	9:10'17.526
6	20.634	25.553	<b>12.181</b>	11.352	24.825	1'34.545	229.3	9:11'52.071
7	20.545	25.508	12.318	11.304	<b>24.630</b>	1'34.305	230.3	9:13'26.376
8	20.454	<b>25.486</b>	12.276	11.362	24.772	1'34.350	229.8	9:15'00.726

29° 12 C. GOBBI (1'34.581)								
Lap	Seg. 1	Seg. 2	Seg. 3	Seg. 4	Seg. 5	Lap Time	km/h	Local Time
		28.444	12.487	11.886	25.443	231.3	9:01'55.273	
1	21.078	26.337	12.116	11.833	24.678	1'36.042	233.3	9:03'31.315
2	20.526	25.982	12.148	<b>11.426</b>	24.636	1'34.718	<b>236.3</b>	9:05'06.033
3	20.788	25.816	12.261	11.701	24.568	1'35.134	235.3	9:06'41.167
4	<b>20.461</b>	25.755	<b>12.081</b>	11.725	<b>24.559</b>	1'34.581	235.3	9:08'15.748
5	20.517	25.974	12.283	11.742	24.905	1'35.421	235.8	9:09'51.169
6	20.515	<b>25.522</b>	12.402	11.639	32.918	1'42.996 P	231.8	9:11'34.165
7	1'45.533	26.638	12.477	11.912	24.878	3'01.438 P	229.8	9:14'35.603
8	20.730	26.236	12.311	11.741	24.732	1'35.750	230.3	9:16'11.353

30° 6 D. STIRPE (1'34.591)								
Lap	Seg. 1	Seg. 2	Seg. 3	Seg. 4	Seg. 5	Lap Time	km/h	Local Time
		27.379	12.324	12.582	25.628	237.4	9:01'44.113	
1	20.929	26.284	12.244	11.961	25.620	1'37.038	234.8	9:03'21.151
2	20.777	26.054	12.184	12.048	32.818	1'43.881	236.3	9:05'05.032
3	21.594	25.985	12.483	12.071	30.925	1'43.058	233.8	9:06'48.090
4	22.208	25.935	12.175	11.776	25.672	1'37.766	<b>237.4</b>	9:08'25.856
5	20.937	27.031	13.818	12.357	25.854	1'39.997		9:10'05.853
6	20.378	<b>25.719</b>	<b>12.156</b>	<b>11.653</b>	<b>24.685</b>	1'34.591	236.3	9:11'40.444
7	20.327	26.143	12.746	12.180	29.038	1'40.434	213.4	9:13'20.878
8	<b>20.256</b>	26.017	12.523	11.772	31.882	1'42.450	235.3	9:15'03.328

31° 7 A. LICCIARDI (1'34.689)								
Lap	Seg. 1	Seg. 2	Seg. 3	Seg. 4	Seg. 5	Lap Time	km/h	Local Time
		27.515	12.410	12.559	25.636	234.8	9:01'45.803	
1	20.635	25.968	12.131	12.101	25.497	1'36.332	235.8	9:03'22.135

P = Pits In/Out - C = Lap-Time Cancelled

These data/results cannot be reproduced, stored and/or transmitted in whole or in part by any manner of electronic, mechanical, photocopying, recording, broadcasting or otherwise now known or herein after developed without the previous express consent by the copyright owner, except for reproduction in daily press and regular printed publications on sale to the public within 60 days of the event related to those data/results and always provided that copyright symbol appears together as follows below.

© DORNA WSBK ORGANIZATION Srl 2016

PIRELLI PERUGIA TIMING

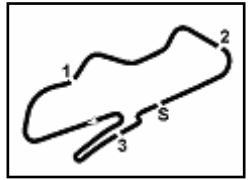


Official Tyre Supplier



Official Timekeeper



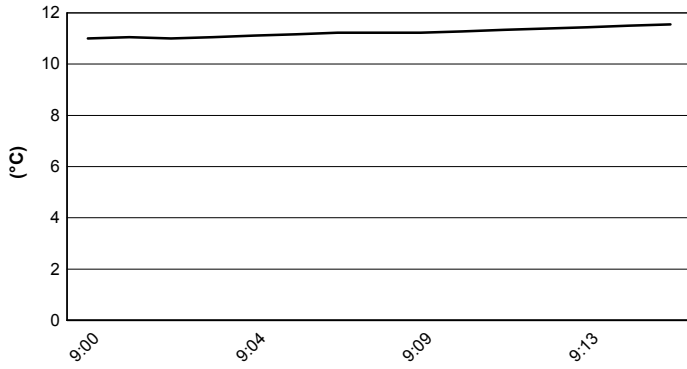


Donington Park 4.023 m

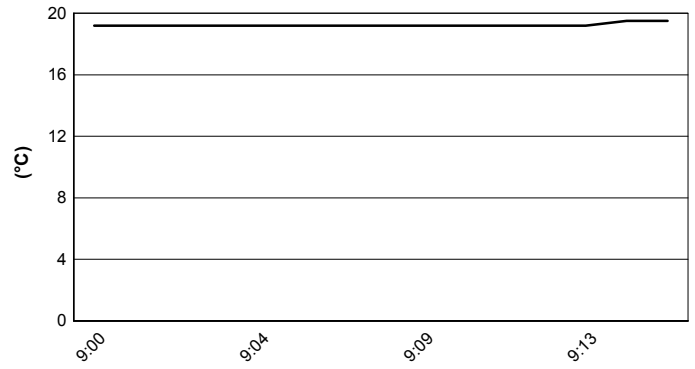
**UK Round, 27-28-29 May 2016**  
**World Supersport - Weather Report Warm Up**

Session started 9:00 Session ended 9:17

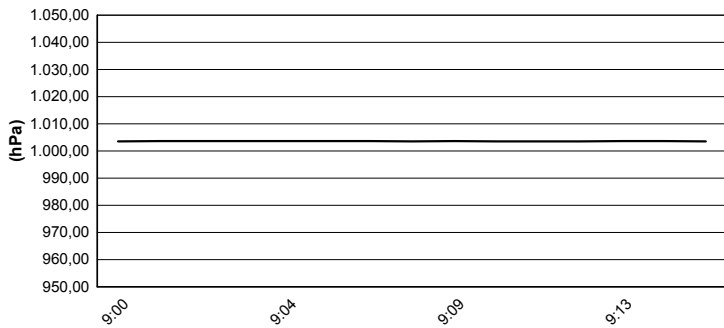
**Air Temperature**



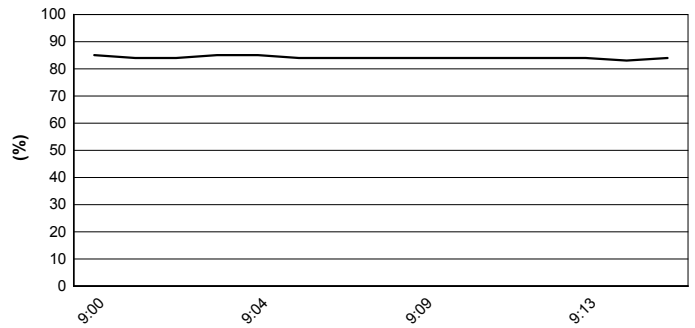
**Track Temperature**



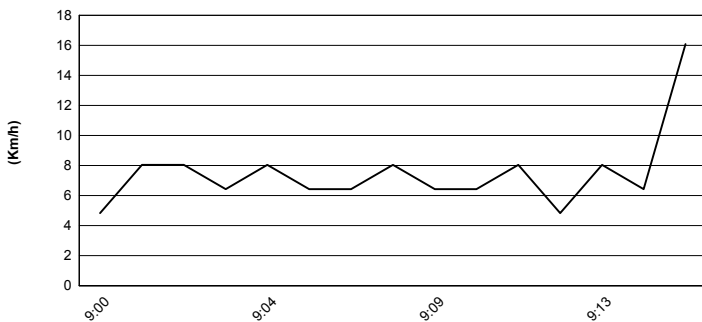
**Air Pressure**



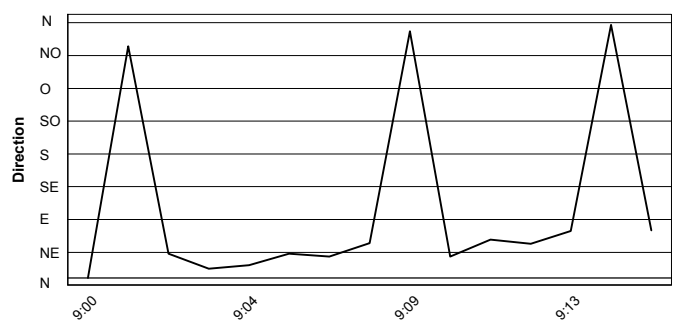
**Humidity**



**Wind Speed**

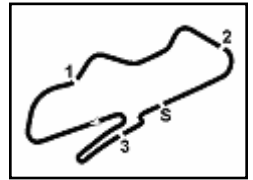


**Wind Direction**



These data/results cannot be reproduced, stored and/or transmitted in whole or in part by any manner of electronic, mechanical, photocopying, recording, broadcasting or otherwise now known or herein after developed without the previous express consent by the copyright owner, except for reproduction in daily press and regular printed publications on sale to the public within 60 days of the event related to those data/results and always provided that copyright symbol appears together as follows below.  
© DORNA WSBK ORGANIZATION Srl 2016





Donington Park 4.023 m

UK Round, 27-28-29 May 2016

World Supersport - Starting Grid

20 Laps x 4,023 km = 80,460 km

Pos	Number	Name	Team	Time	Class
1	1	SOFUOGLU K.	Kawasaki	1'30.298	SP2
2	2	JACOBSEN P.	Honda	1'30.522	SP2
3	81	STAPLEFORD L.	Triumph	1'30.677	SP2
4	25	BALDOLINI A.	MV Agusta	1'30.908	SP2
5	21	KRUMMENACHER R.	Kawasaki	1'31.039	SP2
6	86	BADOVINI A.	Honda	1'31.108	SP2
7	4	REA G.	MV Agusta	1'31.205	SP2
8	111	SMITH K.	Honda	1'31.404	SP2
9	87	ZANETTI L.	MV Agusta	1'31.516	SP2
10	55	MIKHALCHIK I.	Kawasaki	1'31.594	SP2
11	61	ZACCONE A.	Kawasaki	1'31.728	SP2
12	69	JEZEK O.	Kawasaki	1'34.576	SP2
13	16	CLUZEL J.	MV Agusta	1'31.376	SP1
14	11	GAMARINO C.	Kawasaki	1'31.459	SP1
15	64	CARICASULO F.	Honda	1'31.469	SP1
16	78	OKUBO H.	Honda	1'31.706	SP1
17	89	IRWIN A.	Yamaha	1'32.059	SP1
18	88	TEROL N.	MV Agusta	1'32.161	SP1
19	47	BASSANI A.	Kawasaki	1'32.465	SP1
20	44	ROLFO R.	MV Agusta	1'32.508	SP1
21	71	BERGMAN C.	Honda	1'32.900	SP1
22	63	KHAIRUDDIN Z.	Kawasaki	1'33.042	SP1
23	35	HILL S.	Honda	1'33.352	SP1
24	10	CALERO N.	Kawasaki	1'33.364	SP1
25	23	TANGRE C.	Suzuki	1'33.444	SP1
26	77	RYDE K.	MV Agusta	1'33.650	SP1
27	83	EPIS L.	Kawasaki	1'33.789	SP1
28	74	VAN SIKKELERUS J.	Yamaha	1'33.938	SP1
29	41	WAGNER A.	MV Agusta	1'34.012	SP1
30	6	STIRPE D.	Kawasaki	1'34.017	SP1
31	12	GOBBI C.	Yamaha	1'34.061	SP1
32	50	ORTT B.	Honda	1'34.235	SP1
33	96	ORELLANA J.	Honda	1'34.377	SP1
34	7	LICCIARDI A.	Kawasaki	1'34.781	SP1

Jury President .....

..... Race Director

These data/results cannot be reproduced, stored and/or transmitted in whole or in part by any manner of electronic, mechanical, photocopying, recording, broadcasting or otherwise now known or herein after developed without the previous express consent by the copyright owner, except for reproduction in daily press and regular printed publications on sale to the public within 60 days of the event related to those data/results and always provided that copyright symbol appears together as follows below.

© DORNA WSBK ORGANIZATION Srl 2016

FCR PERUGIA TIMING



Official Tyre Supplier



Official Timekeeper