



## German Round, 16-17-18 September 2016

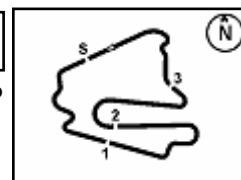
### World Supersport - Free Practices Combined Results

Lausitzring 4.265 m

No.	Rider	Nat	Team	Bike	Class	FP1	FP2	Time	Gap	Rel.	Avg	Laps
1	<b>1 K. SOFUOGLU</b>	TUR	Kawasaki Puccetti Racing	Kawasaki ZX-6R		1'41.760	<b>1'40.901</b>	<b>1'40.901</b>			152,169	32
2	<b>4 G. REA</b>	GBR	GRT Racing Team	MV Agusta F3 675		1'42.734	<b>1'41.374</b>	<b>1'41.374</b>	0.473	0.473	151,459	43
3	<b>66 N. TUULI</b>	FIN	Kallio Racing	Yamaha YZF R6		1'42.981	<b>1'41.633</b>	<b>1'41.633</b>	0.732	0.259	151,073	24
4	<b>16 J. CLUZEL</b>	FRA	MV Agusta Reparto Corse	MV Agusta F3 675		1'42.324	<b>1'41.818</b>	<b>1'41.818</b>	0.917	0.185	150,798	31
5	<b>64 F. CARICASULO</b>	ITA	Bardahl Evan Bros. Honda Racing	Honda CBR600RR		1'42.921	<b>1'41.872</b>	<b>1'41.872</b>	0.971	0.054	150,719	47
6	<b>71 C. BERGMAN</b>	SWE	CIA Landlord Insurance Honda	Honda CBR600RR		1'42.405	<b>1'41.943</b>	<b>1'41.943</b>	1.042	0.071	150,614	43
7	<b>86 A. BADOVINI</b>	ITA	Gemar Balloons - Team Lorini	Honda CBR600RR		1'43.580	<b>1'42.116</b>	<b>1'42.116</b>	1.215	0.173	150,358	37
8	<b>2 P. JACOBSEN</b>	USA	Honda World Supersport Team	Honda CBR600RR		<b>1'42.184</b>	1'42.228	<b>1'42.184</b>	1.283	0.068	150,258	46
9	<b>81 L. STAPLEFORD</b>	GBR	Profile Racing	Triumph Daytona 675		<b>1'42.212</b>	1'42.561	<b>1'42.212</b>	1.311	0.028	150,217	40
10	<b>21 R. KRUMMENACHER</b>	SUI	Kawasaki Puccetti Racing	Kawasaki ZX-6R		1'42.903	<b>1'42.213</b>	<b>1'42.213</b>	1.312	0.001	150,216	43
11	<b>63 Z. KHAIRUDDIN</b>	MAS	Orelac Racing VerdNatura	Kawasaki ZX-6R		1'43.883	<b>1'42.286</b>	<b>1'42.286</b>	1.385	0.073	150,109	40
12	<b>111 K. SMITH</b>	GBR	CIA Landlord Insurance Honda	Honda CBR600RR		1'42.934	<b>1'42.329</b>	<b>1'42.329</b>	1.428	0.043	150,045	45
13	<b>87 L. ZANETTI</b>	ITA	MV Agusta Reparto Corse	MV Agusta F3 675		1'43.275	<b>1'42.531</b>	<b>1'42.531</b>	1.630	0.202	149,750	37
14	<b>19 K. WAHR</b>	GER	Gemar Balloons - Team Lorini	Honda CBR600RR		1'43.741	<b>1'42.535</b>	<b>1'42.535</b>	1.634	0.004	149,744	43
15	<b>78 H. OKUBO</b>	JPN	CIA Landlord Insurance Honda	Honda CBR600RR		1'42.846	<b>1'42.634</b>	<b>1'42.634</b>	1.733	0.099	149,600	41
16	<b>25 A. BALDOLINI</b>	ITA	Race Department ATK#25	MV Agusta F3 675		1'43.054	<b>1'42.775</b>	<b>1'42.775</b>	1.874	0.141	149,394	39
17	<b>44 R. ROLFO</b>	ITA	Team Factory Vomag	MV Agusta F3 675		1'43.188	<b>1'42.851</b>	<b>1'42.851</b>	1.950	0.076	149,284	40
18	<b>47 A. BASSANI</b>	ITA	San Carlo Team Italia	Kawasaki ZX-6R	ESS	1'44.776	<b>1'42.915</b>	<b>1'42.915</b>	2.014	0.064	149,191	43
19	<b>55 I. MIKHALCHIK</b>	UKR	DS Junior Team	Kawasaki ZX-6R	ESS	1'43.666	<b>1'43.134</b>	<b>1'43.134</b>	2.233	0.219	148,874	41
20	<b>22 E. LAHTI</b>	FIN	Team Suzuki Stoneline-Mayer	Suzuki GSX-R600		1'43.746	<b>1'43.180</b>	<b>1'43.180</b>	2.279	0.046	148,808	46
21	<b>77 K. RYDE</b>	GBR	Schmidt Racing	Kawasaki ZX-6R		1'44.783	<b>1'43.422</b>	<b>1'43.422</b>	2.521	0.242	148,460	43
22	<b>61 A. ZACCONE</b>	ITA	San Carlo Team Italia	Kawasaki ZX-6R	ESS	1'44.281	<b>1'43.568</b>	<b>1'43.568</b>	2.667	0.146	148,250	49
23	<b>11 C. GAMARINO</b>	ITA	Team GoEleven	Kawasaki ZX-6R		1'44.461	<b>1'43.596</b>	<b>1'43.596</b>	2.695	0.028	148,210	38
24	<b>38 H. SOOMER</b>	EST	Kallio Racing	Yamaha YZF R6		1'44.149	<b>1'43.703</b>	<b>1'43.703</b>	2.802	0.107	148,057	39
25	<b>65 M. CANDUCCI</b>	ITA	GRT Racing Team	MV Agusta F3 675		1'45.462	<b>1'43.747</b>	<b>1'43.747</b>	2.846	0.044	147,995	42
26	<b>69 O. JEZEK</b>	CZE	Team GoEleven	Kawasaki ZX-6R		1'44.556	<b>1'43.799</b>	<b>1'43.799</b>	2.898	0.052	147,921	44
27	<b>10 N. CALERO</b>	ESP	Orelac Racing VerdNatura	Kawasaki ZX-6R		1'44.718	<b>1'43.905</b>	<b>1'43.905</b>	3.004	0.106	147,770	43
28	<b>23 C. TANGRE</b>	FRA	Team Yohann Moto Sport	Suzuki GSX-R600	ESS	1'45.586	<b>1'44.017</b>	<b>1'44.017</b>	3.116	0.112	147,610	45
29	<b>6 D. STIRPE</b>	ITA	Scuderia Maranga Racing	Kawasaki ZX-6R	ESS	1'45.485	<b>1'44.291</b>	<b>1'44.291</b>	3.390	0.274	147,223	37
30	<b>83 L. EPIS</b>	AUS	Response RE Racing	Kawasaki ZX-6R		1'45.241	<b>1'44.595</b>	<b>1'44.595</b>	3.694	0.304	146,795	40
31	<b>12 C. GOBBI</b>	ITA	VFT Racing	Yamaha YZF R6	ESS	1'45.617	<b>1'45.073</b>	<b>1'45.073</b>	4.172	0.478	146,127	33
32	<b>35 S. HILL</b>	GBR	CIA Landlord Insurance Honda	Honda CBR600RR		1'48.109	<b>1'46.402</b>	<b>1'46.402</b>	5.501	1.329	144,302	44
33	<b>50 B. ORTT</b>	CAN	WILSport Racedays Honda	Honda CBR600RR	ESS	1'46.878	<b>1'46.535</b>	<b>1'46.535</b>	5.634	0.133	144,122	50
34	<b>49 C. TOBOLEWSKI</b>	USA	MTM / HS Kawasaki	Kawasaki ZX-6R	ESS	1'52.829	<b>1'51.207</b>	<b>1'51.207</b>	10.306	4.672	138,067	43
35	<b>7 A. LICCIARDI</b>	BEL	R2 MotorRacing Team	Kawasaki ZX-6R	ESS	<b>1'57.099</b>		<b>1'57.099</b>	16.198	5.892	131,120	2

These data/results cannot be reproduced, stored and/or transmitted in whole or in part by any manner of electronic, mechanical, photocopying, recording, broadcasting or otherwise now known or herein after developed without the previous express consent by the copyright owner, except for reproduction in daily press and regular printed publications on sale to the public within 60 days of the event related to those data/results and always provided that copyright symbol appears together as follows below.  
© DORNA WSBK ORGANIZATION Srl 2016

16/09/2016



Lausitzring 4.265 m

1 / 2

## German Round, 16-17-18 September 2016

### World Supersport - Results Free Practice 2nd Session

No.	Rider	Nat	Team	Bike	Class	Time	Gap	Rel.	Laps	Speed	
										Avg	Max
1	1 K. SOFUOGLU	TUR	Kawasaki Puccetti Racing	Kawasaki ZX-6R		<b>1'40.901</b>			19	152,169	<b>248,2</b>
2	4 G. REA	GBR	GRT Racing Team	MV Agusta F3 675		<b>1'41.374</b>	0.473	0.473	21	151,459	<b>245,9</b>
3	66 N. TUULI	FIN	Kallio Racing	Yamaha YZF R6		<b>1'41.633</b>	0.732	0.259	15	151,073	<b>246,5</b>
4	16 J. CLUZEL	FRA	MV Agusta Reparto Corse	MV Agusta F3 675		<b>1'41.818</b>	0.917	0.185	11	150,798	<b>244,8</b>
5	64 F. CARICASULO	ITA	Bardahl Evan Bros. Honda Racing	Honda CBR600RR		<b>1'41.872</b>	0.971	0.054	23	150,719	<b>244,8</b>
6	71 C. BERGMAN	SWE	CIA Landlord Insurance Honda	Honda CBR600RR		<b>1'41.943</b>	1.042	0.071	21	150,614	<b>246,5</b>
7	86 A. BADOVINI	ITA	Gemar Balloons - Team Lorini	Honda CBR600RR		<b>1'42.116</b>	1.215	0.173	18	150,358	<b>248,2</b>
8	21 R. KRUMMENACHER	SUI	Kawasaki Puccetti Racing	Kawasaki ZX-6R		<b>1'42.213</b>	1.312	0.097	23	150,216	<b>246,5</b>
9	2 P. JACOBSEN	USA	Honda World Supersport Team	Honda CBR600RR		<b>1'42.228</b>	1.327	0.015	23	150,194	<b>252,3</b>
10	63 Z. KHAIRUDDIN	MAS	Orelac Racing VerdNatura	Kawasaki ZX-6R		<b>1'42.286</b>	1.385	0.058	21	150,109	<b>248,8</b>
11	111 K. SMITH	GBR	CIA Landlord Insurance Honda	Honda CBR600RR		<b>1'42.329</b>	1.428	0.043	23	150,045	<b>248,2</b>
12	87 L. ZANETTI	ITA	MV Agusta Reparto Corse	MV Agusta F3 675		<b>1'42.531</b>	1.630	0.202	19	149,750	<b>246,5</b>
13	19 K. WAHR	GER	Gemar Balloons - Team Lorini	Honda CBR600RR		<b>1'42.535</b>	1.634	0.004	19	149,744	<b>245,9</b>
14	81 L. STAPLEFORD	GBR	Profile Racing	Triumph Daytona 675		<b>1'42.561</b>	1.660	0.026	22	149,706	<b>246,5</b>
15	78 H. OKUBO	JPN	CIA Landlord Insurance Honda	Honda CBR600RR		<b>1'42.634</b>	1.733	0.073	22	149,600	<b>249,3</b>
16	25 A. BALDOLINI	ITA	Race Department ATK#25	MV Agusta F3 675		<b>1'42.775</b>	1.874	0.141	19	149,394	<b>248,8</b>
17	44 R. ROLFO	ITA	Team Factory Vamag	MV Agusta F3 675		<b>1'42.851</b>	1.950	0.076	17	149,284	<b>241,5</b>
18	47 A. BASSANI	ITA	San Carlo Team Italia	Kawasaki ZX-6R	ESS	<b>1'42.915</b>	2.014	0.064	22	149,191	<b>252,3</b>
19	55 I. MIKHALCHIK	UKR	DS Junior Team	Kawasaki ZX-6R	ESS	<b>1'43.134</b>	2.233	0.219	19	148,874	<b>243,7</b>
20	22 E. LAHTI	FIN	Team Suzuki Stoneline-Mayer	Suzuki GSX-R600		<b>1'43.180</b>	2.279	0.046	24	148,808	<b>239,3</b>
21	77 K. RYDE	GBR	Schmidt Racing	Kawasaki ZX-6R		<b>1'43.422</b>	2.521	0.242	21	148,460	<b>249,3</b>
22	61 A. ZACCONE	ITA	San Carlo Team Italia	Kawasaki ZX-6R	ESS	<b>1'43.568</b>	2.667	0.146	24	148,250	<b>247,6</b>
23	11 C. GAMARINO	ITA	Team GoEleven	Kawasaki ZX-6R		<b>1'43.596</b>	2.695	0.028	19	148,210	<b>245,9</b>
24	38 H. SOOMER	EST	Kallio Racing	Yamaha YZF R6		<b>1'43.703</b>	2.802	0.107	19	148,057	<b>244,2</b>
25	65 M. CANDUCCI	ITA	GRT Racing Team	MV Agusta F3 675		<b>1'43.747</b>	2.846	0.044	22	147,995	<b>248,8</b>
26	69 O. JEZEK	CZE	Team GoEleven	Kawasaki ZX-6R		<b>1'43.799</b>	2.898	0.052	23	147,921	<b>244,2</b>
27	10 N. CALERO	ESP	Orelac Racing VerdNatura	Kawasaki ZX-6R		<b>1'43.905</b>	3.004	0.106	23	147,770	<b>247,6</b>
28	23 C. TANGRE	FRA	Team Yohann Moto Sport	Suzuki GSX-R600	ESS	<b>1'44.017</b>	3.116	0.112	24	147,610	<b>243,7</b>
29	6 D. STIRPE	ITA	Scuderia Maranga Racing	Kawasaki ZX-6R	ESS	<b>1'44.291</b>	3.390	0.274	21	147,223	<b>248,8</b>
30	83 L. EPIS	AUS	Response RE Racing	Kawasaki ZX-6R		<b>1'44.595</b>	3.694	0.304	21	146,795	<b>249,3</b>
31	12 C. GOBBI	ITA	VFT Racing	Yamaha YZF R6	ESS	<b>1'45.073</b>	4.172	0.478	16	146,127	<b>245,3</b>
32	35 S. HILL	GBR	CIA Landlord Insurance Honda	Honda CBR600RR		<b>1'46.402</b>	5.501	1.329	21	144,302	<b>239,9</b>
33	50 B. ORTT	CAN	WILSport Racedays Honda	Honda CBR600RR	ESS	<b>1'46.535</b>	5.634	0.133	26	144,122	<b>239,9</b>
----- Not Qualified -----											
NQ	49 C. TOBOLEWSKI	USA	MTM / HS Kawasaki	Kawasaki ZX-6R	ESS	<b>1'51.207</b>	10.306	4.672	23	138,067	<b>239,9</b>
NQ	7 A. LICCIARDI	BEL	R2 MotorRacing Team	Kawasaki ZX-6R	ESS				0		

Qualifying Lap Time (107% of 1'40.901): 1'47.965

AIR	Humidity:	47%	Temp:	27°C
TRACK	Condition:	Dry	Temp:	38°C

Lap Record:	2006 K.Curtain	1'41.006	152,010	Km/h
Best Lap:	2007 K.Sofuoglu	1'41.946	150,610	Km/h

These data/results cannot be reproduced, stored and/or transmitted in whole or in part by any manner of electronic, mechanical, photocopying, recording, broadcasting or otherwise now known or herein after developed without the previous express consent by the copyright owner, except for reproduction in daily press and regular printed publications on sale to the public within 60 days of the event related to those data/results and always provided that copyright symbol appears together as follows below.

© DORNA WSBK ORGANIZATION Srl 2016

Start	End	The results are provisional until the end of the time limit for protests and appeals
16/09/2016 14:49	15:55	and the completion of the technical checks.

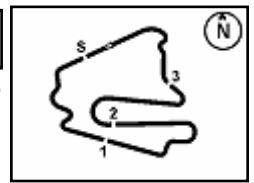
FICR PERUGIA TIMING



Official Tyre Supplier



Official Timekeeper



### German Round, 16-17-18 September 2016

### World Supersport - Results Free Practice 2nd Session

#### Session Highlights

14.49.59		Start
15.05.42	Khairuddin	Crashed - Rider OK - Turn 7
15.05.54	Khairuddin	Re-joined
15.12.36	Epis	Time Deleted (1'48.486) - Exceeding Track Limit
15.18.37	Cluzel	Stop - Technical Problem
15.23.46		RED FLAG
15.37.13	Sofuoglu	Under Investigation
15.37.53	Sofuoglu	No Further Action
15.41.49	Gobbi	Technical Problem - Turn 12
15.44.26		Stock 1000 Pit Lane Will Open at 16:05
15.48.41	Epis	Time Deleted - Exceeding Track Limits - Turn 5
15.48.59	Stapleford	Crashed - Rider OK - Turn 4
15.49.28	Stapleford	Re-joined
15.50.08	Ryde	Time Deleted (1'48.145) - Exceeding Track Limit
15.51.38	Jezek	Time Deleted (1'56.159) - Exceeding Track Limit
15.51.46	Soomer	Crashed Rider OK - Re Joined - Turn 9
15.52.48	Canducci	Crashed - Rider OK - Turn 5
15.53.49	Jezek	Time Deleted (2'10.597) - Exceeding Track Limit
15.55.04	Wahr	On the Gravel - Re-Joined - Turn 14
15.55.35		End Of Session

#### Fastest Laps Sequence

No.	Rider	Nat	Team	Bike	Local Time	Time	Gap	Avg
1	K. SOFUOGLU	TUR	Kawasaki Puccetti Racing	Kawasaki ZX-6R	14:53'28.821	<b>1'41.999</b>		150,531
1	K. SOFUOGLU	TUR	Kawasaki Puccetti Racing	Kawasaki ZX-6R	14:55'10.727	<b>1'41.906</b>	-0.093	150,668
1	K. SOFUOGLU	TUR	Kawasaki Puccetti Racing	Kawasaki ZX-6R	14:56'52.404	<b>1'41.677</b>	-0.229	151,008
1	K. SOFUOGLU	TUR	Kawasaki Puccetti Racing	Kawasaki ZX-6R	15:35'01.974	<b>1'41.357</b>	-0.320	151,484
1	K. SOFUOGLU	TUR	Kawasaki Puccetti Racing	Kawasaki ZX-6R	15:36'43.261	<b>1'41.287</b>	-0.070	151,589
1	K. SOFUOGLU	TUR	Kawasaki Puccetti Racing	Kawasaki ZX-6R	15:38'24.342	<b>1'41.081</b>	-0.206	151,898
1	K. SOFUOGLU	TUR	Kawasaki Puccetti Racing	Kawasaki ZX-6R	15:50'40.729	<b>1'40.901</b>	-0.180	152,169

These data/results cannot be reproduced, stored and/or transmitted in whole or in part by any manner of electronic, mechanical, photocopying, recording, broadcasting or otherwise now known or herein after developed without the previous express consent by the copyright owner, except for reproduction in daily press and regular printed publications on sale to the public within 60 days of the event related to those data/results and always provided that copyright symbol appears together as follows below.

© DORNA WSBK ORGANIZATION Srl 2016

Start	End	The results are provisional until the end of the time limit for protests and appeals
16/09/2016 14:49	15:55	and the completion of the technical checks.

FICR PERUGIA TIMING



Official Tyre Supplier



Official Timekeeper





Lausitzring 4.265 m

1 / 2

## German Round, 16-17-18 September 2016

### World Supersport - Ideal Times Free Practice 2nd Session

No.	Rider	Nat	Bike	Seg. 1 Diff. 1	Seg. 2 Diff. 2	Seg. 3 Diff. 3	Seg. 4 Diff. 4	Seg. 5 Diff. 5	Ideal Time Best Lap	Pos.	Diff.
1	<b>1 K. SOFUOGLU</b>	TUR	Kawasaki ZX-6R	1.729 0.021	<b>24.978</b> 0.086	31.653	<b>22.618</b>	<b>19.816</b>	<b>1'40.794</b> 1'40.901	2	0.107
2	<b>4 G. REA</b>	GBR	MV Agusta F3 675	1.750 0.004	25.062 0.011	<b>31.568</b> 0.109	22.917	19.892 0.061	<b>1'41.189</b> 1'41.374	3	0.185
3	<b>66 N. TUULI</b>	FIN	Yamaha YZF R6	1.743 0.006	25.279 0.027	31.673	22.866 0.083	19.956	<b>1'41.517</b> 1'41.633	4	0.116
4	<b>16 J. CLUZEL</b>	FRA	MV Agusta F3 675	1.757 0.009	25.027	31.869	23.076	20.080	<b>1'41.809</b> 1'41.818	5	0.009
5	<b>64 F. CARICASULO</b>	ITA	Honda CBR600RR	1.745 0.013	25.077	31.937	22.970 0.020	20.110	<b>1'41.839</b> 1'41.872	6	0.033
6	<b>71 C. BERGMAN</b>	SWE	Honda CBR600RR	1.746 0.014	25.140 0.072	31.906 0.013	23.098	19.954	<b>1'41.844</b> 1'41.943	7	0.099
7	<b>2 P. JACOBSEN</b>	USA	Honda CBR600RR	<b>1.701</b> 0.049	25.209 0.093	32.055	23.119	19.881 0.121	<b>1'41.965</b> 1'42.228	10	0.263
8	<b>111 K. SMITH</b>	GBR	Honda CBR600RR	1.735 0.029	25.163 0.087	32.013 0.096	23.108 0.085	19.964 0.049	<b>1'41.983</b> 1'42.329	12	0.346
9	<b>21 R. KRUMMENACHER</b>	SUI	Kawasaki ZX-6R	1.743 0.018	25.369	32.015 0.029	22.971	19.970 0.098	<b>1'42.068</b> 1'42.213	9	0.145
10	<b>86 A. BADOVINI</b>	ITA	Honda CBR600RR	1.736 0.010	25.311 0.003	31.886	23.102	20.038 0.030	<b>1'42.073</b> 1'42.116	8	0.043
11	<b>81 L. STAPLEFORD</b>	GBR	Triumph Daytona 675	1.735 0.041	25.271	32.004 0.164	23.114 0.156	20.028 0.048	<b>1'42.152</b> 1'42.561	15	0.409
12	<b>63 Z. KHAIRUDDIN</b>	MAS	Kawasaki ZX-6R	1.721 0.022	25.249	31.938	23.165	20.191	<b>1'42.264</b> 1'42.286	11	0.022
13	<b>78 H. OKUBO</b>	JPN	Honda CBR600RR	1.723 0.041	25.381 0.056	32.139 0.043	23.076 0.002	19.976 0.197	<b>1'42.295</b> 1'42.634	16	0.339
14	<b>19 K. WAHR</b>	GER	Honda CBR600RR	1.748 0.043	25.479	32.111 0.041	23.009 0.007	20.071 0.026	<b>1'42.418</b> 1'42.535	14	0.117
15	<b>87 L. ZANETTI</b>	ITA	MV Agusta F3 675	1.743	25.273	32.068 0.014	23.244	20.189	<b>1'42.517</b> 1'42.531	13	0.014
16	<b>25 A. BALDOLINI</b>	ITA	MV Agusta F3 675	1.731 0.038	25.330	32.214 0.047	23.097 0.077	20.176 0.065	<b>1'42.548</b> 1'42.775	17	0.227
17	<b>55 I. MIKHALCHIK</b>	UKR	Kawasaki ZX-6R	1.763 0.010	25.295 0.290	32.233 0.128	23.167 0.099	20.110 0.039	<b>1'42.568</b> 1'43.134	20	0.566
18	<b>44 R. ROLFO</b>	ITA	MV Agusta F3 675	1.765 0.001	25.349 0.243	32.167	23.099	20.227	<b>1'42.607</b> 1'42.851	18	0.244
19	<b>47 A. BASSANI</b>	ITA	Kawasaki ZX-6R	1.706 0.027	25.489	32.175	23.154 0.093	20.126 0.145	<b>1'42.650</b> 1'42.915	19	0.265
20	<b>22 E. LAHTI</b>	FIN	Suzuki GSX-R600	1.767 0.029	25.587	32.138	23.238 0.042	20.260 0.119	<b>1'42.990</b> 1'43.180	21	0.190
21	<b>61 A. ZACCONE</b>	ITA	Kawasaki ZX-6R	1.725	25.583 0.405	32.307	23.371	20.177	<b>1'43.163</b> 1'43.568	23	0.405
22	<b>11 C. GAMARINO</b>	ITA	Kawasaki ZX-6R	1.746 0.031	25.485 0.114	32.223	23.485 0.073	20.232 0.207	<b>1'43.171</b> 1'43.596	24	0.425
23	<b>77 K. RYDE</b>	GBR	Kawasaki ZX-6R	1.727 0.003	25.696	32.213 0.177	23.304 0.049	20.253	<b>1'43.193</b> 1'43.422	22	0.229
24	<b>65 M. CANDUCCI</b>	ITA	MV Agusta F3 675	1.725 0.044	25.543	32.362	23.334 0.369	20.370	<b>1'43.334</b> 1'43.747	26	0.413
25	<b>10 N. CALERO</b>	ESP	Kawasaki ZX-6R	1.733 0.024	25.778 0.159	32.387 0.017	23.345 0.143	20.257 0.062	<b>1'43.500</b> 1'43.905	28	0.405
26	<b>69 O. JEZEK</b>	CZE	Kawasaki ZX-6R	1.752 0.013	25.701 0.117	32.318 0.078	23.311	20.485 0.024	<b>1'43.567</b> 1'43.799	27	0.232
27	<b>38 H. SOOMER</b>	EST	Yamaha YZF R6	1.762	25.711	32.363	23.481	20.386	<b>1'43.703</b> 1'43.703	25	0.000
28	<b>23 C. TANGRE</b>	FRA	Suzuki GSX-R600	1.764	25.761	32.434 0.077	23.276 0.147	20.508 0.050	<b>1'43.743</b> 1'44.017	29	0.274
29	<b>6 D. STIRPE</b>	ITA	Kawasaki ZX-6R	1.738 0.032	25.812 0.270	32.435	23.385 0.043	20.564 0.012	<b>1'43.934</b> 1'44.291	30	0.357
30	<b>83 L. EPIS</b>	AUS	Kawasaki ZX-6R	1.730 0.041	25.943	32.805 0.143	23.448	20.485	<b>1'44.411</b> 1'44.595	31	0.184
31	<b>12 C. GOBBI</b>	ITA	Yamaha YZF R6	1.754 0.012	25.851	32.838	23.740 0.208	20.450 0.220	<b>1'44.633</b> 1'45.073	32	0.440

16/09/2016

These data/results cannot be reproduced, stored and/or transmitted in whole or in part by any manner of electronic, mechanical, photocopying, recording, broadcasting or otherwise now known or herein after developed without the previous express consent by the copyright owner, except for reproduction in daily press and regular printed publications on sale to the public within 60 days of the event related to those data/results and always provided that copyright symbol appears together as follows below.  
© DORNA WSBK ORGANIZATION Srl 2016

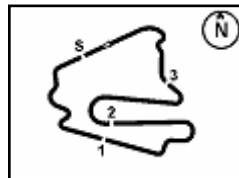
FICR PERUGIA TIMING



Official Tyre Supplier



Official Timekeeper



Lausitzring 4.265 m

2 / 2

## German Round, 16-17-18 September 2016

### World Supersport - Ideal Times Free Practice 2nd Session

No. Rider	Nat	Bike	Seg. 1 Diff. 1	Seg. 2 Diff. 2	Seg. 3 Diff. 3	Seg. 4 Diff. 4	Seg. 5 Diff. 5	Ideal Time		
								Best Lap	Pos.	Diff.
32 <b>50 B. ORTT</b>	CAN	Honda CBR600RR	1.784 0.028	26.254 0.200	33.043 0.104	24.029 0.291	20.727 0.275	<b>1'45.837</b> 1'46.535	34	0.698
33 <b>35 S. HILL</b>	GBR	Honda CBR600RR	1.786 0.015	26.307 0.200	33.169 0.112	23.816 0.123	20.825 0.049	<b>1'45.903</b> 1'46.402	33	0.499
34 <b>49 C. TOBOLEWSKI</b>	USA	Kawasaki ZX-6R	1.785 0.012	27.616 0.008	34.773 0.132	25.139 0.218	21.465 0.059	<b>1'50.778</b> 1'51.207	35	0.429
<b>Overall Ideal Time</b>			1.701	24.978	31.568	22.618	19.816	<b>1'40.681</b>		

16/09/2016

These data/results cannot be reproduced, stored and/or transmitted in whole or in part by any manner of electronic, mechanical, photocopying, recording, broadcasting or otherwise now known or herein after developed without the previous express consent by the copyright owner, except for reproduction in daily press and regular printed publications on sale to the public within 60 days of the event related to those data/results and always provided that copyright symbol appears together as follows below.  
© DORNA WSBK ORGANIZATION Srl 2016

FICR PERUGIA TIMING



Official Tyre Supplier



Official Timekeeper



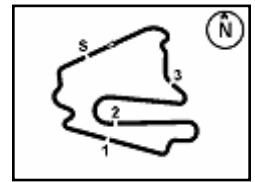












## German Round, 16-17-18 September 2016

### World Supersport - Chronological Analysis Free Practice 2nd Session

2	1.784	26.938	33.346	24.798	21.228	1'48.094	<b>239.9</b>	14:55'41.867
3	1.792	26.765	33.588	24.502	21.033	1'47.680	238.8	14:57'29.547
4	1.792	26.914	33.693	24.438	21.116	1'47.953	238.8	14:59'17.500
5	1.806	27.094	33.567	24.315	21.047	1'47.829	237.2	15:01'05.329
6	1.803	27.249	35.473	30.359	35.256	2'10.140 P	236.7	15:03'15.469
7			35.730	24.703	21.231	12'10.635 P		15:15'26.104
8	1.820	26.894	33.641	24.128	21.136	1'47.619	235.1	15:17'13.723
9	1.816	26.748	33.423	24.104	20.963	1'47.054	235.7	15:19'00.777
10	1.803	26.818	33.729	24.714	22.644	1'49.708	237.2	15:20'50.485
11	1.815	26.542	33.460	24.379	21.068	1'47.264	235.1	15:22'37.749
12	1.824	26.890	33.410	25.576	36.855	2'04.555 C	234.6	15:24'42.304
13			37.802	24.945	21.166	5'56.461 P		15:30'38.765
14	1.821	26.864	33.522	24.259	21.190	1'47.656	235.1	15:32'26.421
15	1.823	26.670	33.429	24.338	21.040	1'47.300	234.6	15:34'13.721
16	1.823	26.712	33.696	<b>24.029</b>	20.830	1'47.090	234.6	15:36'00.811
17	1.805	26.730	33.430	24.289	21.238	1'47.492	236.7	15:37'48.303
18	1.825	35.421	34.629	24.385	21.131	1'57.391	234.1	15:39'45.694
19	1.802	26.694	33.315	24.045	21.030	1'46.886	237.2	15:41'32.580
20	1.806	26.792	33.213	24.157	20.984	1'46.952	236.2	15:43'19.532
21	1.812	<b>26.254</b>	33.147	24.320	21.002	<b>1'46.535</b>	236.7	15:45'06.067
22	1.799	39.627	36.260	27.097	24.316	2'09.099	237.7	15:47'15.166
23	1.803	26.577	33.185	24.290	<b>20.727</b>	1'46.582	237.2	15:49'01.748
24	1.795	26.575	<b>33.043</b>	24.130	21.004	1'46.547	238.8	15:50'48.295
25	1.803	26.438	34.163	24.242	21.647	1'48.293	237.7	15:52'36.588
26	1.807	26.932	33.310	24.058	20.908	1'47.015	236.2	15:54'23.603

**34° 49 C. TOBOLEWSKI (1'51.207)**

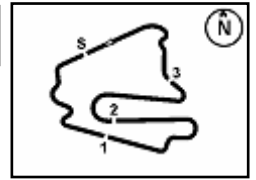
Lap	Seg. 1	Seg. 2	Seg. 3	Seg. 4	Seg. 5	Lap Time	km/h	Local Time
1	1.788	28.232	35.665	25.520	21.713	1'52.918	238.3	14:52'05.064
2	1.803	28.023	35.704	25.577	21.514	1'52.621	235.7	14:53'57.982
3	<b>1.785</b>	27.834	35.498	<b>25.139</b>	21.900	1'52.156	<b>239.9</b>	14:57'42.759
4	<b>1.785</b>	27.642	35.324	25.856	21.714	1'52.321	238.8	14:59'35.080
5	1.812	31.092	45.657	29.432	46.013	2'34.006 P	235.7	15:02'09.086
6			38.229	26.061	21.810	6'49.710 P		15:08'58.796
7	1.826	27.973	35.944	25.961	22.075	1'53.779	234.1	15:10'52.575
8	1.834	28.469	35.899	25.522	21.800	1'53.524	233.1	15:12'46.099
9	1.825	<b>27.616</b>	35.324	25.602	21.705	1'52.072	233.1	15:14'38.171
10	1.806	28.084	35.860	26.124	36.535	2'08.409 P	234.6	15:16'46.580
11			36.320	25.610	21.731	5'35.830 P		15:22'22.410
12	1.820	27.868	34.819	25.501	39.077	2'09.085 C	233.6	15:24'31.495
13			36.224	26.136	23.040	4'54.207 P		15:29'25.702
14	1.835	28.780	<b>34.773</b>	25.532	21.907	1'52.827	233.1	15:31'18.529
15	1.794	28.031	34.816	25.422	<b>21.465</b>	1'51.528	239.3	15:33'10.057
16	1.796	27.815	37.218	26.101	36.560	2'09.490 P	238.8	15:35'19.547
17			36.492	26.040	21.970	5'46.030 P		15:41'05.577
18	1.824	27.975	35.172	25.554	21.781	1'52.306	234.6	15:42'57.883
19	1.827	27.743	35.915	25.751	22.020	1'53.256	234.1	15:44'51.139
20	1.828	28.286	35.812	26.408	21.988	1'54.322	232.6	15:46'45.461
21	1.797	27.624	34.905	25.357	21.524	<b>1'51.207</b>	236.2	15:48'36.668
22	1.803	28.494	36.304	25.942	21.904	1'54.447	237.7	15:50'31.115
23	1.795	30.983	43.039	27.175	37.735	2'20.727 P	237.7	15:52'51.842

P = Pits In/Out - C = Lap-Time Cancelled

These data/results cannot be reproduced, stored and/or transmitted in whole or in part by any manner of electronic, mechanical, photocopying, recording, broadcasting or otherwise now known or herein after developed without the previous express consent by the copyright owner, except for reproduction in daily press and regular printed publications on sale to the public within 60 days of the event related to those data/results and always provided that copyright symbol appears together as follows below.

© DORNA WSBK ORGANIZATION Srl 2016



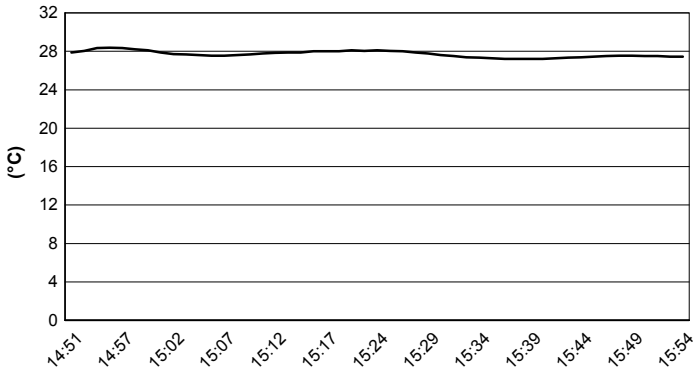


Lausitzring 4.265 m

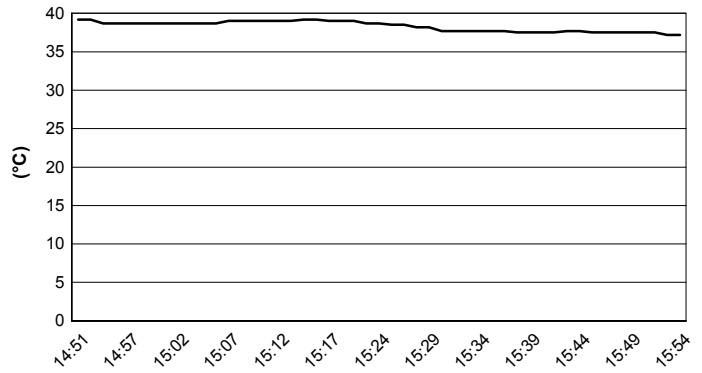
**German Round, 16-17-18 September 2016**  
**World Supersport - Weather Report Free Practice 2nd Session**

Session started 14:49      Session ended 15:55

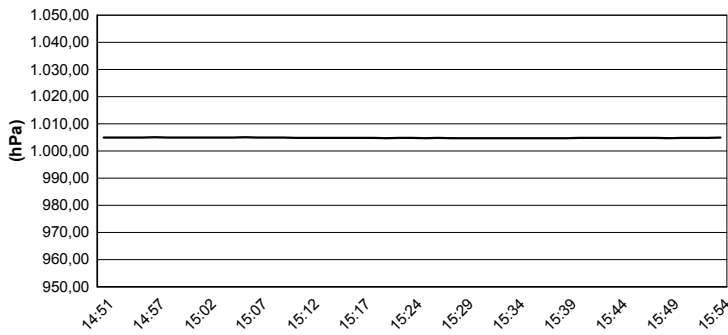
### Air Temperature



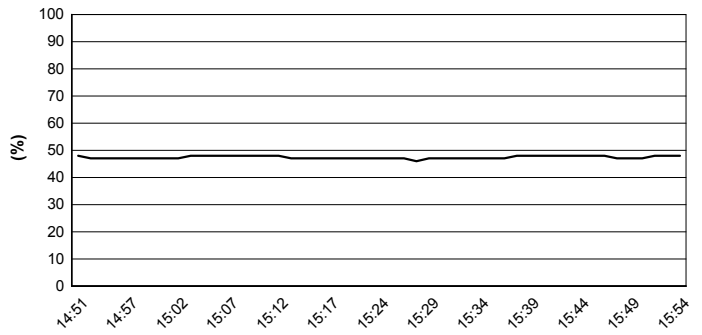
### Track Temperature



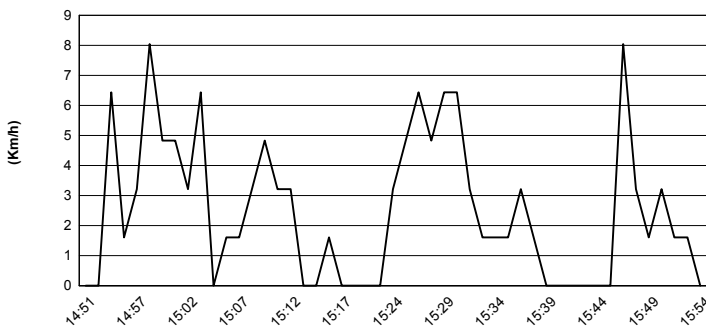
### Air Pressure



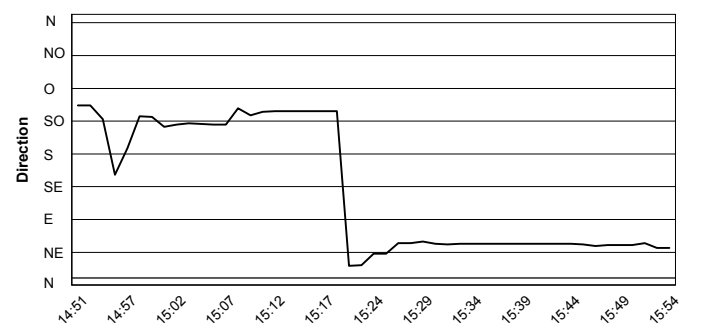
### Humidity



### Wind Speed



### Wind Direction



These data/results cannot be reproduced, stored and/or transmitted in whole or in part by any manner of electronic, mechanical, photocopying, recording, broadcasting or otherwise now known or herein after developed without the previous express consent by the copyright owner, except for reproduction in daily press and regular printed publications on sale to the public within 60 days of the event related to those data/results and always provided that copyright symbol appears together as follows below.  
© DORNA WSBK ORGANIZATION Srl 2016



## German Round, 16-17-18 September 2016

### World Supersport - Provisional Superpoles Entry List

Lausitzring 4.265 m

#### Superpole 1

No.	Rider	Nat	Team	Bike	Time
11	<b>63</b> Z. <b>KHAIRUDDIN</b>	MAS	Orelac Racing VerdNatura	Kawasaki ZX-6R	<b>1'42.286</b>
12	<b>111</b> K. <b>SMITH</b>	GBR	CIA Landlord Insurance Honda	Honda CBR600RR	<b>1'42.329</b>
13	<b>87</b> L. <b>ZANETTI</b>	ITA	MV Agusta Reparto Corse	MV Agusta F3 675	<b>1'42.531</b>
14	<b>19</b> K. <b>WAHR</b>	GER	Gemar Balloons - Team Lorini	Honda CBR600RR	<b>1'42.535</b>
15	<b>78</b> H. <b>OKUBO</b>	JPN	CIA Landlord Insurance Honda	Honda CBR600RR	<b>1'42.634</b>
16	<b>25</b> A. <b>BALDOLINI</b>	ITA	Race Department ATK#25	MV Agusta F3 675	<b>1'42.775</b>
17	<b>44</b> R. <b>ROLFO</b>	ITA	Team Factory Vamag	MV Agusta F3 675	<b>1'42.851</b>
18	<b>47</b> A. <b>BASSANI</b>	ITA	San Carlo Team Italia	Kawasaki ZX-6R	<b>1'42.915</b>
19	<b>55</b> I. <b>MIKHALCHIK</b>	UKR	DS Junior Team	Kawasaki ZX-6R	<b>1'43.134</b>
20	<b>22</b> E. <b>LAHTI</b>	FIN	Team Suzuki Stoneline-Mayer	Suzuki GSX-R600	<b>1'43.180</b>
21	<b>77</b> K. <b>RYDE</b>	GBR	Schmidt Racing	Kawasaki ZX-6R	<b>1'43.422</b>
22	<b>61</b> A. <b>ZACCONE</b>	ITA	San Carlo Team Italia	Kawasaki ZX-6R	<b>1'43.568</b>
23	<b>11</b> C. <b>GAMARINO</b>	ITA	Team GoEleven	Kawasaki ZX-6R	<b>1'43.596</b>
24	<b>38</b> H. <b>SOOMER</b>	EST	Kallio Racing	Yamaha YZF R6	<b>1'43.703</b>
25	<b>65</b> M. <b>CANDUCCI</b>	ITA	GRT Racing Team	MV Agusta F3 675	<b>1'43.747</b>
26	<b>69</b> O. <b>JEZEK</b>	CZE	Team GoEleven	Kawasaki ZX-6R	<b>1'43.799</b>
27	<b>10</b> N. <b>CALERO</b>	ESP	Orelac Racing VerdNatura	Kawasaki ZX-6R	<b>1'43.905</b>
28	<b>23</b> C. <b>TANGRE</b>	FRA	Team Yohann Moto Sport	Suzuki GSX-R600	<b>1'44.017</b>
29	<b>6</b> D. <b>STIRPE</b>	ITA	Scuderia Maranga Racing	Kawasaki ZX-6R	<b>1'44.291</b>
30	<b>83</b> L. <b>EPIS</b>	AUS	Response RE Racing	Kawasaki ZX-6R	<b>1'44.595</b>
31	<b>12</b> C. <b>GOBBI</b>	ITA	VFT Racing	Yamaha YZF R6	<b>1'45.073</b>
32	<b>35</b> S. <b>HILL</b>	GBR	CIA Landlord Insurance Honda	Honda CBR600RR	<b>1'46.402</b>
33	<b>50</b> B. <b>ORTT</b>	CAN	WILSport Racedays Honda	Honda CBR600RR	<b>1'46.535</b>

#### Superpole 2

No.	Rider	Nat	Team	Bike	Time
1	<b>1</b> K. <b>SOFUOGLU</b>	TUR	Kawasaki Puccetti Racing	Kawasaki ZX-6R	<b>1'40.901</b>
2	<b>4</b> G. <b>REA</b>	GBR	GRT Racing Team	MV Agusta F3 675	<b>1'41.374</b>
3	<b>66</b> N. <b>TUULI</b>	FIN	Kallio Racing	Yamaha YZF R6	<b>1'41.633</b>
4	<b>16</b> J. <b>CLUZEL</b>	FRA	MV Agusta Reparto Corse	MV Agusta F3 675	<b>1'41.818</b>
5	<b>64</b> F. <b>CARICASULO</b>	ITA	Bardahl Evan Bros. Honda Racing	Honda CBR600RR	<b>1'41.872</b>
6	<b>71</b> C. <b>BERGMAN</b>	SWE	CIA Landlord Insurance Honda	Honda CBR600RR	<b>1'41.943</b>
7	<b>86</b> A. <b>BADOVINI</b>	ITA	Gemar Balloons - Team Lorini	Honda CBR600RR	<b>1'42.116</b>
8	<b>2</b> P. <b>JACOBSEN</b>	USA	Honda World Supersport Team	Honda CBR600RR	<b>1'42.184</b>
9	<b>81</b> L. <b>STAPLEFORD</b>	GBR	Profile Racing	Triumph Daytona 675	<b>1'42.212</b>
10	<b>21</b> R. <b>KRUMMENACHER</b>	SUI	Kawasaki Puccetti Racing	Kawasaki ZX-6R	<b>1'42.213</b>

\*  
\*

\* These positions are assigned to the 1st and 2nd rider classified in Superpole 1

16/09/2016

These data/results cannot be reproduced, stored and/or transmitted in whole or in part by any manner of electronic, mechanical, photocopying, recording, broadcasting or otherwise now known or herein after developed without the previous express consent by the copyright owner, except for reproduction in daily press and regular printed publications on sale to the public within 60 days of the event related to those data/results and always provided that copyright symbol appears together as follows below.

© DORNA WSBK ORGANIZATION Srl 2016

FICR PERUGIA TIMING



Official Tyre Supplier



Official Timekeeper



## German Round, 16-17-18 September 2016

### World Supersport - Best Laps & Speeds

No.	Rider		Best Lap	FP1		FP2	
	Nat	Bike		laps	speed	laps	speed
1	<b>1</b>	<b>K. SOFUOGLU</b> TUR Kawasaki ZX-6R	<b>1'40.901</b> 32 250	13	250	19	248
2	<b>4</b>	<b>G. REA</b> GBR MV Agusta F3 675	<b>1'41.374</b> 43 249	22	249	21	246
3	<b>66</b>	<b>N. TUULI</b> FIN Yamaha YZF R6	<b>1'41.633</b> 24 246	9	245	15	246
4	<b>16</b>	<b>J. CLUZEL</b> FRA MV Agusta F3 675	<b>1'41.818</b> 31 246	20	246	11	245
5	<b>64</b>	<b>F. CARICASULO</b> ITA Honda CBR600RR	<b>1'41.872</b> 47 246	24	246	23	245
6	<b>71</b>	<b>C. BERGMAN</b> SWE Honda CBR600RR	<b>1'41.943</b> 43 246	22	245	21	246
7	<b>86</b>	<b>A. BADOVINI</b> ITA Honda CBR600RR	<b>1'42.116</b> 37 249	19	249	18	248
8	<b>2</b>	<b>P. JACOBSEN</b> USA Honda CBR600RR	<b>1'42.184</b> 46 254	23	254	23	252
9	<b>81</b>	<b>L. STAPLEFORD</b> GBR Triumph Daytona 675	<b>1'42.212</b> 40 246	18	245	22	246
10	<b>21</b>	<b>R. KRUMMENACHER</b> SUI Kawasaki ZX-6R	<b>1'42.213</b> 43 246	20	246	23	246
11	<b>63</b>	<b>Z. KHAIRUDDIN</b> MAS Kawasaki ZX-6R	<b>1'42.286</b> 40 249	19	249	21	249
12	<b>111</b>	<b>K. SMITH</b> GBR Honda CBR600RR	<b>1'42.329</b> 45 248	22	246	23	248
13	<b>87</b>	<b>L. ZANETTI</b> ITA MV Agusta F3 675	<b>1'42.531</b> 37 250	18	250	19	246
14	<b>19</b>	<b>K. WAHR</b> GER Honda CBR600RR	<b>1'42.535</b> 43 246	24	245	19	246
15	<b>78</b>	<b>H. OKUBO</b> JPN Honda CBR600RR	<b>1'42.634</b> 41 249	19	247	22	249
16	<b>25</b>	<b>A. BALDOLINI</b> ITA MV Agusta F3 675	<b>1'42.775</b> 39 249	20	248	19	249
17	<b>44</b>	<b>R. ROLFO</b> ITA MV Agusta F3 675	<b>1'42.851</b> 40 241	23	241	17	241
18	<b>47</b>	<b>A. BASSANI</b> ITA Kawasaki ZX-6R	<b>1'42.915</b> 43 252	21	248	22	252
19	<b>55</b>	<b>I. MIKHALCHIK</b> UKR Kawasaki ZX-6R	<b>1'43.134</b> 41 244	22	244	19	244
20	<b>22</b>	<b>E. LAHTI</b> FIN Suzuki GSX-R600	<b>1'43.180</b> 46 239	22	239	24	239

These data/results cannot be reproduced, stored and/or transmitted in whole or in part by any manner of electronic, mechanical, photocopying, recording, broadcasting or otherwise now known or herein after developed without the previous express consent by the copyright owner, except for reproduction in daily press and regular printed publications on sale to the public within 60 days of the event related to those data/results and always provided that copyright symbol appears together as follows below.

© DORNA WSBK ORGANIZATION Srl 2016



## German Round, 16-17-18 September 2016

### World Supersport - Best Laps & Speeds

No.	Rider		Best Lap	FP1		FP2	
	Nat	Bike		laps	speed	laps	speed
21	77	K. RYDE	1'43.422	1'44.783	1'43.422		
	GBR	Kawasaki ZX-6R	43 249	22 248	21 249		
22	61	A. ZACCONE	1'43.568	1'44.281	1'43.568		
	ITA	Kawasaki ZX-6R	49 248	25 246	24 248		
23	11	C. GAMARINO	1'43.596	1'44.461	1'43.596		
	ITA	Kawasaki ZX-6R	38 246	19 246	19 246		
24	38	H. SOOMER	1'43.703	1'44.149	1'43.703		
	EST	Yamaha YZF R6	39 244	20 244	19 244		
25	65	M. CANDUCCI	1'43.747	1'45.462	1'43.747		
	ITA	MV Agusta F3 675	42 249	20 245	22 249		
26	69	O. JEZEK	1'43.799	1'44.556	1'43.799		
	CZE	Kawasaki ZX-6R	44 245	21 245	23 244		
27	10	N. CALERO	1'43.905	1'44.718	1'43.905		
	ESP	Kawasaki ZX-6R	43 248	20 246	23 248		
28	23	C. TANGRE	1'44.017	1'45.586	1'44.017		
	FRA	Suzuki GSX-R600	45 244	21 241	24 244		
29	6	D. STIRPE	1'44.291	1'45.485	1'44.291		
	ITA	Kawasaki ZX-6R	37 249	16 248	21 249		
30	83	L. EPIS	1'44.595	1'45.241	1'44.595		
	AUS	Kawasaki ZX-6R	40 249	19 248	21 249		
31	12	C. GOBBI	1'45.073	1'45.617	1'45.073		
	ITA	Yamaha YZF R6	33 246	17 246	16 245		
32	35	S. HILL	1'46.402	1'48.109	1'46.402		
	GBR	Honda CBR600RR	44 241	23 241	21 240		
33	50	B. ORTT	1'46.535	1'46.878	1'46.535		
	CAN	Honda CBR600RR	50 240	24 239	26 240		
34	49	C. TOBOLEWSKI	1'51.207	1'52.829	1'51.207		
	USA	Kawasaki ZX-6R	43 240	20 239	23 240		
35	7	A. LICCIARDI	1'57.099	1'57.099			
	BEL	Kawasaki ZX-6R	2 231	2 231			

16/09/2016

These data/results cannot be reproduced, stored and/or transmitted in whole or in part by any manner of electronic, mechanical, photocopying, recording, broadcasting or otherwise now known or herein after developed without the previous express consent by the copyright owner, except for reproduction in daily press and regular printed publications on sale to the public within 60 days of the event related to those data/results and always provided that copyright symbol appears together as follows below.

© DORNA WSBK ORGANIZATION Srl 2016

FICR PERUGIA TIMING



Official Tyre Supplier



Official Timekeeper