

Lausitzring 4.265 m

1 / 2

## German Round, 16-17-18 September 2016

### World Supersport - Results Superpole 1

No.	Rider	Nat	Team	Bike	Class	Time	Gap	Rel.	Laps	Speed	
										Avg	Max
1*	111 K. SMITH	GBR	CIA Landlord Insurance Honda	Honda CBR600RR		<b>1'42.358</b>			7	150,003	<b>245,9</b>
2*	87 L. ZANETTI	ITA	MV Agusta Reparto Corse	MV Agusta F3 675		<b>1'42.369</b>	0.011	0.011	6	149,987	<b>251,1</b>
3	19 K. WAHR	GER	Gemar Balloons - Team Lorini	Honda CBR600RR		<b>1'42.563</b>	0.205	0.194	6	149,703	<b>243,1</b>
4	55 I. MIKHALCHIK	UKR	DS Junior Team	Kawasaki ZX-6R	ESS	<b>1'42.565</b>	0.207	0.002	3	149,700	<b>244,2</b>
5	61 A. ZACCONE	ITA	San Carlo Team Italia	Kawasaki ZX-6R	ESS	<b>1'42.687</b>	0.329	0.122	7	149,522	<b>250,5</b>
6	25 A. BALDOLINI	ITA	Race Department ATK#25	MV Agusta F3 675		<b>1'42.823</b>	0.465	0.136	6	149,325	<b>247,6</b>
7	77 K. RYDE	GBR	Schmidt Racing	Kawasaki ZX-6R		<b>1'42.839</b>	0.481	0.016	6	149,301	<b>249,9</b>
8	47 A. BASSANI	ITA	San Carlo Team Italia	Kawasaki ZX-6R	ESS	<b>1'42.891</b>	0.533	0.052	7	149,226	<b>253,4</b>
9	44 R. ROLFO	ITA	Team Factory Vamag	MV Agusta F3 675		<b>1'42.957</b>	0.599	0.066	7	149,130	<b>248,2</b>
10	78 H. OKUBO	JPN	CIA Landlord Insurance Honda	Honda CBR600RR		<b>1'43.012</b>	0.654	0.055	7	149,051	<b>243,1</b>
11	22 E. LAHTI	FIN	Team Suzuki Stoneline-Mayer	Suzuki GSX-R600		<b>1'43.050</b>	0.692	0.038	7	148,996	<b>248,8</b>
12	65 M. CANDUCCI	ITA	GRT Racing Team	MV Agusta F3 675		<b>1'43.058</b>	0.700	0.008	8	148,984	<b>251,7</b>
13	38 H. SOOMER	EST	Kallio Racing	Yamaha YZF R6		<b>1'43.307</b>	0.949	0.249	6	148,625	<b>244,2</b>
14	63 Z. KHAIRUDDIN	MAS	Orelac Racing VerdNatura	Kawasaki ZX-6R		<b>1'43.339</b>	0.981	0.032	5	148,579	<b>246,5</b>
15	11 C. GAMARINO	ITA	Team GoEleven	Kawasaki ZX-6R		<b>1'43.721</b>	1.363	0.382	5	148,032	<b>242,6</b>
16	69 O. JEZEK	CZE	Team GoEleven	Kawasaki ZX-6R		<b>1'44.045</b>	1.687	0.324	6	147,571	<b>248,2</b>
17	10 N. CALERO	ESP	Orelac Racing VerdNatura	Kawasaki ZX-6R		<b>1'44.338</b>	1.980	0.293	5	147,156	<b>245,3</b>
18	23 C. TANGRE	FRA	Team Yohann Moto Sport	Suzuki GSX-R600	ESS	<b>1'44.518</b>	2.160	0.180	5	146,903	<b>239,9</b>
19	83 L. EPIS	AUS	Response RE Racing	Kawasaki ZX-6R		<b>1'44.706</b>	2.348	0.188	8	146,639	<b>247,6</b>
20	35 S. HILL	GBR	CIA Landlord Insurance Honda	Honda CBR600RR		<b>1'45.012</b>	2.654	0.306	7	146,212	<b>242,6</b>
21	12 C. GOBBI	ITA	VFT Racing	Yamaha YZF R6	ESS	<b>1'45.234</b>	2.876	0.222	6	145,903	<b>244,2</b>
22	6 D. STIRPE	ITA	Scuderia Maranga Racing	Kawasaki ZX-6R	ESS	<b>1'45.348</b>	2.990	0.114	6	145,746	<b>249,3</b>
23	50 B. ORTT	CAN	WILSport Racedays Honda	Honda CBR600RR	ESS	<b>1'46.133</b>	3.775	0.785	8	144,668	<b>240,4</b>

\* Qualified to Superpole 2

AIR	Humidity:	77%	Temp:	17°C
TRACK	Condition:	Dry	Temp:	24°C

Lap Record:	2016 K.Sofuoglu	1'40.901	152,170	Km/h
Best Lap:	2007 K.Sofuoglu	1'41.946	150,610	Km/h

These data/results cannot be reproduced, stored and/or transmitted in whole or in part by any manner of electronic, mechanical, photocopying, recording, broadcasting or otherwise now known or herein after developed without the previous express consent by the copyright owner, except for reproduction in daily press and regular printed publications on sale to the public within 60 days of the event related to those data/results and always provided that copyright symbol appears together as follows below.

© DORNA WSBK ORGANIZATION Srl 2016

Start	End	The results are provisional until the end of the time limit for protests and appeals and the completion of the technical checks.
17/09/2016 11:30	11:47	

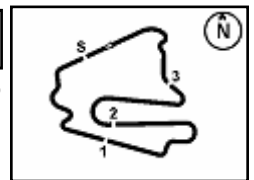
FICR PERUGIA TIMING



Official Tyre Supplier



Official Timekeeper



## German Round, 16-17-18 September 2016

### World Supersport - Results Superpole 1

#### Session Highlights

11.30.01		Start
11.32.15	Soomer	Time Deleted - Exit Track Limits Turn 1
11.35.29	Canducci	Time Deleted - Exceeding Track Limits - Turn 5
11.36.55	Soomer	On the Gravel - Re-Joined - Turn 6
11.43.12	Okubo	Time Deleted - Exit Track Limits Turn 1
11.47.16		End Of Session

#### Fastest Laps Sequence

No.	Rider	Nat	Team	Bike	Local Time	Time	Gap	Avg
19	K. WAHR	GER	Gemar Balloons - Team Lorini	Honda CBR600RR	11:33'37.308	<b>1'44.161</b>		147,406
19	K. WAHR	GER	Gemar Balloons - Team Lorini	Honda CBR600RR	11:35'20.603	<b>1'43.295</b>	-0.866	148,642
111	K. SMITH	GBR	CIA Landlord Insurance Honda	Honda CBR600RR	11:35'20.898	<b>1'43.103</b>	-0.192	148,919
25	A. BALDOLINI	ITA	Race Department ATK#25	MV Agusta F3 675	11:35'21.984	<b>1'42.823</b>	-0.280	149,325
111	K. SMITH	GBR	CIA Landlord Insurance Honda	Honda CBR600RR	11:43'59.391	<b>1'42.451</b>	-0.372	149,867
111	K. SMITH	GBR	CIA Landlord Insurance Honda	Honda CBR600RR	11:45'41.749	<b>1'42.358</b>	-0.093	150,003

These data/results cannot be reproduced, stored and/or transmitted in whole or in part by any manner of electronic, mechanical, photocopying, recording, broadcasting or otherwise now known or herein after developed without the previous express consent by the copyright owner, except for reproduction in daily press and regular printed publications on sale to the public within 60 days of the event related to those data/results and always provided that copyright symbol appears together as follows below.

© DORNA WSBK ORGANIZATION Srl 2016

	Start	End	The results are provisional until the end of the time limit for protests and appeals
17/09/2016	11:30	11:47	and the completion of the technical checks.

FICR PERUGIA TIMING



Official Tyre Supplier



Official Timekeeper

## German Round, 16-17-18 September 2016

### World Supersport - Best Sector & Speed Superpole 1

Lausitzring 4.265 m

#### Best Lap

1	111 K. SMITH	Honda CBR600RR	1'42.358
2	87 L. ZANETTI	MV Austa F3 675	1'42.369
3	19 K. WAHR	Honda CBR600RR	1'42.563
4	55 I. MIKHALCHIK	Kawasaki ZX-6R	1'42.565
5	61 A. ZACCONE	Kawasaki ZX-6R	1'42.687
6	25 A. BALDOLINI	MV Austa F3 675	1'42.823
7	77 K. RYDE	Kawasaki ZX-6R	1'42.839
8	47 A. BASSANI	Kawasaki ZX-6R	1'42.891
9	44 R. ROLFO	MV Austa F3 675	1'42.957
10	78 H. OKUBO	Honda CBR600RR	1'43.012
11	22 E. LAHTI	Suzuki GSX-R600	1'43.050
12	65 M. CANDUCCI	MV Austa F3 675	1'43.058
13	38 H. SOOMER	Yamaha YZF R6	1'43.307
14	63 Z. KHAIRUDDIN	Kawasaki ZX-6R	1'43.339
15	11 C. GAMARINO	Kawasaki ZX-6R	1'43.721
16	69 O. JEZEK	Kawasaki ZX-6R	1'44.045
17	10 N. CALERO	Kawasaki ZX-6R	1'44.338
18	23 C. TANGRE	Suzuki GSX-R600	1'44.518
19	83 L. EPIS	Kawasaki ZX-6R	1'44.706
20	35 S. HILL	Honda CBR600RR	1'45.012
21	12 C. GOBBI	Yamaha YZF R6	1'45.234
22	6 D. STIRPE	Kawasaki ZX-6R	1'45.348
23	50 B. ORTT	Honda CBR600RR	1'46.133

#### Best Sector & Speed

1	47 A. BASSANI	Kawasaki ZX-6R	253.4
2	65 M. CANDUCCI	MV Austa F3 675	251.7
3	87 L. ZANETTI	MV Austa F3 675	251.1
4	61 A. ZACCONE	Kawasaki ZX-6R	250.5
5	77 K. RYDE	Kawasaki ZX-6R	249.9
6	6 D. STIRPE	Kawasaki ZX-6R	249.3
7	22 E. LAHTI	Suzuki GSX-R600	248.8
8	44 R. ROLFO	MV Austa F3 675	248.2
9	69 O. JEZEK	Kawasaki ZX-6R	248.2
10	83 L. EPIS	Kawasaki ZX-6R	247.6
11	25 A. BALDOLINI	MV Austa F3 675	247.6
12	63 Z. KHAIRUDDIN	Kawasaki ZX-6R	246.5
13	111 K. SMITH	Honda CBR600RR	245.9
14	10 N. CALERO	Kawasaki ZX-6R	245.3
15	38 H. SOOMER	Yamaha YZF R6	244.2
16	12 C. GOBBI	Yamaha YZF R6	244.2
17	55 I. MIKHALCHIK	Kawasaki ZX-6R	244.2
18	19 K. WAHR	Honda CBR600RR	243.1
19	78 H. OKUBO	Honda CBR600RR	243.1
20	35 S. HILL	Honda CBR600RR	242.6
21	11 C. GAMARINO	Kawasaki ZX-6R	242.6
22	50 B. ORTT	Honda CBR600RR	240.4
23	23 C. TANGRE	Suzuki GSX-R600	239.9

Seg. 1		Seg. 2		Seg. 3		Seg. 4		Seg. 5						
1	47 A. BASSANI	1.690	1	87 L. ZANETTI	25.239	1	87 L. ZANETTI	31.921	1	55 I. MIKHALCHIK	23.010	1	111 K. SMITH	19.951
2	65 M. CANDUCCI	1.697	2	111 K. SMITH	25.286	2	19 K. WAHR	32.046	2	44 R. ROLFO	23.057	2	55 I. MIKHALCHIK	19.956
3	77 K. RYDE	1.710	3	61 A. ZACCONE	25.322	3	77 K. RYDE	32.081	3	22 E. LAHTI	23.066	3	78 H. OKUBO	20.069
4	61 A. ZACCONE	1.714	4	65 M. CANDUCCI	25.425	4	25 A. BALDOLINI	32.118	4	47 A. BASSANI	23.071	4	87 L. ZANETTI	20.081
5	87 L. ZANETTI	1.718	5	55 I. MIKHALCHIK	25.474	5	111 K. SMITH	32.144	5	19 K. WAHR	23.076	5	22 E. LAHTI	20.095
6	6 D. STIRPE	1.720	6	19 K. WAHR	25.507	6	61 A. ZACCONE	32.169	6	111 K. SMITH	23.099	6	38 H. SOOMER	20.125
7	69 O. JEZEK	1.733	7	78 H. OKUBO	25.519	7	65 M. CANDUCCI	32.181	7	25 A. BALDOLINI	23.116	7	77 K. RYDE	20.141
8	25 A. BALDOLINI	1.735	8	44 R. ROLFO	25.527	8	47 A. BASSANI	32.200	8	63 Z. KHAIRUDDIN	23.126	8	61 A. ZACCONE	20.164
9	83 L. EPIS	1.740	9	47 A. BASSANI	25.532	9	44 R. ROLFO	32.240	9	78 H. OKUBO	23.155	9	19 K. WAHR	20.168
10	63 Z. KHAIRUDDIN	1.741	10	25 A. BALDOLINI	25.558	10	55 I. MIKHALCHIK	32.251	10	61 A. ZACCONE	23.158	10	47 A. BASSANI	20.175
11	44 R. ROLFO	1.746	11	77 K. RYDE	25.566	11	78 H. OKUBO	32.269	11	77 K. RYDE	23.207	11	44 R. ROLFO	20.179
12	22 E. LAHTI	1.747	12	38 H. SOOMER	25.592	12	22 E. LAHTI	32.306	12	38 H. SOOMER	23.210	12	25 A. BALDOLINI	20.199
13	111 K. SMITH	1.747	13	22 E. LAHTI	25.731	13	38 H. SOOMER	32.320	13	87 L. ZANETTI	23.288	13	63 Z. KHAIRUDDIN	20.216
14	55 I. MIKHALCHIK	1.751	14	11 C. GAMARINO	25.733	14	11 C. GAMARINO	32.494	14	69 O. JEZEK	23.341	14	65 M. CANDUCCI	20.283
15	10 N. CALERO	1.752	15	63 Z. KHAIRUDDIN	25.748	15	63 Z. KHAIRUDDIN	32.505	15	65 M. CANDUCCI	23.380	15	11 C. GAMARINO	20.295
16	38 H. SOOMER	1.756	16	83 L. EPIS	25.909	16	69 O. JEZEK	32.522	16	11 C. GAMARINO	23.400	16	10 N. CALERO	20.377
17	12 C. GOBBI	1.758	17	23 C. TANGRE	26.036	17	10 N. CALERO	32.562	17	23 C. TANGRE	23.429	17	69 O. JEZEK	20.378
18	19 K. WAHR	1.763	18	69 O. JEZEK	26.042	18	23 C. TANGRE	32.608	18	10 N. CALERO	23.453	18	83 L. EPIS	20.462
19	35 S. HILL	1.763	19	10 N. CALERO	26.065	19	12 C. GOBBI	32.798	19	35 S. HILL	23.462	19	35 S. HILL	20.548
20	78 H. OKUBO	1.764	20	12 C. GOBBI	26.093	20	83 L. EPIS	32.810	20	83 L. EPIS	23.599	20	23 C. TANGRE	20.588
21	11 C. GAMARINO	1.767	21	6 D. STIRPE	26.114	21	35 S. HILL	32.895	21	6 D. STIRPE	23.620	21	12 C. GOBBI	20.675
22	23 C. TANGRE	1.774	22	35 S. HILL	26.119	22	6 D. STIRPE	33.007	22	50 B. ORTT	23.850	22	6 D. STIRPE	20.694
23	50 B. ORTT	1.780	23	50 B. ORTT	26.216	23	50 B. ORTT	33.050	23	12 C. GOBBI	23.857	23	50 B. ORTT	20.754

17/09/2016

These data/results cannot be reproduced, stored and/or transmitted in whole or in part by any manner of electronic, mechanical, photocopying, recording, broadcasting or otherwise now known or herein after developed without the previous express consent by the copyright owner, except for reproduction in daily press and regular printed publications on sale to the public within 60 days of the event related to those data/results and always provided that copyright symbol appears together as follows below.

© DORNA WSBK ORGANIZATION Srl 2016

FICR PERUGIA TIMING



Official Tyre Supplier



Official Timekeeper



Lausitzring 4.265 m

1 / 1

## German Round, 16-17-18 September 2016

### World Supersport - Ideal Times Superpole 1

No. Rider	Nat	Bike	Seg. 1 Diff. 1	Seg. 2 Diff. 2	Seg. 3 Diff. 3	Seg. 4 Diff. 4	Seg. 5 Diff. 5	Ideal Time Best Lap	Pos.	Diff.
1 111 K. SMITH	GBR	Honda CBR600RR	1.747 0.011	25.286 0.084	32.144	23.099 0.036	<b>19.951</b>	<b>1'42.227</b> 1'42.358	1	0.131
2 87 L. ZANETTI	ITA	MV Agusta F3 675	1.718 0.018	<b>25.239</b>	<b>31.921</b> 0.079	23.288 0.025	20.081	<b>1'42.247</b> 1'42.369	2	0.122
3 55 I. MIKHALCHIK	UKR	Kawasaki ZX-6R	1.751	25.474	32.251 0.006	<b>23.010</b> 0.117	19.956	<b>1'42.442</b> 1'42.565	4	0.123
4 61 A. ZACCONE	ITA	Kawasaki ZX-6R	1.714 0.026	25.322	32.169	23.158 0.065	20.164 0.069	<b>1'42.527</b> 1'42.687	5	0.160
5 19 K. WAHR	GER	Honda CBR600RR	1.763 0.003	25.507	32.046	23.076	20.168	<b>1'42.560</b> 1'42.563	3	0.003
6 47 A. BASSANI	ITA	Kawasaki ZX-6R	<b>1.690</b> 0.046	25.532	32.200	23.071 0.080	20.175 0.097	<b>1'42.668</b> 1'42.891	8	0.223
7 77 K. RYDE	GBR	Kawasaki ZX-6R	1.710	25.566 0.119	32.081	23.207	20.141 0.015	<b>1'42.705</b> 1'42.839	7	0.134
8 25 A. BALDOLINI	ITA	MV Agusta F3 675	1.735	25.558	32.118	23.116 0.097	20.199	<b>1'42.726</b> 1'42.823	6	0.097
9 44 R. ROLFO	ITA	MV Agusta F3 675	1.746	25.527 0.058	32.240 0.054	23.057	20.179 0.096	<b>1'42.749</b> 1'42.957	9	0.208
10 78 H. OKUBO	JPN	Honda CBR600RR	1.764	25.519 0.034	32.269 0.175	23.155 0.027	20.069	<b>1'42.776</b> 1'43.012	10	0.236
11 22 E. LAHTI	FIN	Suzuki GSX-R600	1.747 0.031	25.731	32.306 0.074	23.066	20.095	<b>1'42.945</b> 1'43.050	11	0.105
12 65 M. CANDUCCI	ITA	MV Agusta F3 675	1.697 0.056	25.425	32.181 0.036	23.380	20.283	<b>1'42.966</b> 1'43.058	12	0.092
13 38 H. SOOMER	EST	Yamaha YZF R6	1.756 0.027	25.592 0.277	32.320	23.210	20.125	<b>1'43.003</b> 1'43.307	13	0.304
14 63 Z. KHAIRUDDIN	MAS	Kawasaki ZX-6R	1.741 0.003	25.748	32.505	23.126	20.216	<b>1'43.336</b> 1'43.339	14	0.003
15 11 C. GAMARINO	ITA	Kawasaki ZX-6R	1.767	25.733	32.494	23.400	20.295 0.032	<b>1'43.689</b> 1'43.721	15	0.032
16 69 O. JEZEK	CZE	Kawasaki ZX-6R	1.733 0.029	26.042	32.522	23.341	20.378	<b>1'44.016</b> 1'44.045	16	0.029
17 10 N. CALERO	ESP	Kawasaki ZX-6R	1.752	26.065	32.562	23.453	20.377 0.129	<b>1'44.209</b> 1'44.338	17	0.129
18 23 C. TANGRE	FRA	Suzuki GSX-R600	1.774 0.012	26.036 0.071	32.608	23.429	20.588	<b>1'44.435</b> 1'44.518	18	0.083
19 83 L. EPIS	AUS	Kawasaki ZX-6R	1.740 0.036	25.909	32.810 0.007	23.599	20.462 0.143	<b>1'44.520</b> 1'44.706	19	0.186
20 35 S. HILL	GBR	Honda CBR600RR	1.763	26.119	32.895 0.082	23.462	20.548 0.143	<b>1'44.787</b> 1'45.012	20	0.225
21 6 D. STIRPE	ITA	Kawasaki ZX-6R	1.720 0.020	26.114	33.007 0.001	23.620 0.091	20.694 0.081	<b>1'45.155</b> 1'45.348	22	0.193
22 12 C. GOBBI	ITA	Yamaha YZF R6	1.758 0.006	26.093	32.798	23.857 0.047	20.675	<b>1'45.181</b> 1'45.234	21	0.053
23 50 B. ORTT	CAN	Honda CBR600RR	1.780	26.216	33.050 0.088	23.850 0.097	20.754 0.298	<b>1'45.650</b> 1'46.133	23	0.483
<b>Overall Ideal Time</b>			1.690	25.239	31.921	23.010	19.951	<b>1'41.811</b>		

17/09/2016

These data/results cannot be reproduced, stored and/or transmitted in whole or in part by any manner of electronic, mechanical, photocopying, recording, broadcasting or otherwise now known or herein after developed without the previous express consent by the copyright owner, except for reproduction in daily press and regular printed publications on sale to the public within 60 days of the event related to those data/results and always provided that copyright symbol appears together as follows below.  
© DORNA WSBK ORGANIZATION Srl 2016

FICR PERUGIA TIMING

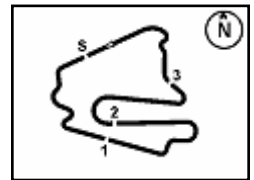


Official Tyre Supplier



Official Timekeeper





Lausitzring 4.265 m

## German Round, 16-17-18 September 2016

### World Supersport - Chronological Analysis Superpole 1

2 / 2

16° 69 O. JEZEK (1'44.045)								
Lap	Seg. 1	Seg. 2	Seg. 3	Seg. 4	Seg. 5	Lap Time	km/h	Local Time
1	1.775	26.394	37.770	26.261	21.356	1'45.385	242.0	11:33'39.074
2	1.763	26.075	32.764	23.583	32.650	1'56.835 P	242.6	11:37'21.294
3			33.671	23.526	20.653	3'46.130 P		11:41'07.424
4	1.763	26.123	32.714	23.518	20.578	1'44.696	243.1	11:42'52.120
5	1.762	<b>26.042</b>	<b>32.522</b>	<b>23.341</b>	<b>20.378</b>	<b>1'44.045</b>	243.7	11:44'36.165
6	<b>1.733</b>	28.378	37.009	24.239	21.477	1'52.836	<b>248.2</b>	11:46'29.001

2	1.790	26.929	33.856	24.481	21.221	1'48.277	239.3	11:35'42.297
3	1.795	26.709	33.751	24.324	21.076	1'47.655	238.3	11:37'29.952
4	1.798	26.541	33.381	23.997	21.086	1'46.803	238.3	11:39'16.755
5	1.799	26.494	33.406	23.990	20.991	1'46.680	237.2	11:41'03.435
6	1.799	26.534	<b>33.050</b>	24.249	<b>20.754</b>	1'46.386	237.2	11:42'49.821
7	<b>1.780</b>	<b>26.216</b>	33.138	23.947	21.052	<b>1'46.133</b>	<b>240.4</b>	11:44'35.954
8	1.794	26.613	33.157	<b>23.850</b>	20.858	1'46.272	238.3	11:46'22.226

17° 10 N. CALERO (1'44.338)								
Lap	Seg. 1	Seg. 2	Seg. 3	Seg. 4	Seg. 5	Lap Time	km/h	Local Time
1	1.769	27.027	33.315	23.962	20.809	1'46.882	242.6	11:34'01.163
2	1.762	26.588	33.105	23.788	20.771	1'46.014	244.2	11:35'47.177
3	1.759	26.420	33.357	25.760	32.339	1'59.635 P	244.2	11:37'46.812
4			33.927	25.260	<b>20.377</b>	5'29.910 P		11:43'16.722
5	<b>1.752</b>	<b>26.065</b>	<b>32.562</b>	<b>23.453</b>	20.506	<b>1'44.338</b>	<b>245.3</b>	11:45'01.060

18° 23 C. TANGRE (1'44.518)								
Lap	Seg. 1	Seg. 2	Seg. 3	Seg. 4	Seg. 5	Lap Time	km/h	Local Time
1	1.784	27.134	36.391	25.336	21.873	1'46.799	239.3	11:31'59.897
2	<b>1.774</b>	26.643	33.058	23.735	32.581	1'57.791 P	<b>239.9</b>	11:35'44.487
3			34.725	24.253	21.067	5'51.144 P		11:41'35.631
4	1.792	<b>26.036</b>	32.640	23.775	20.685	1'44.928	238.8	11:43'20.559
5	1.786	26.107	<b>32.608</b>	<b>23.429</b>	<b>20.588</b>	<b>1'44.518</b>	<b>239.9</b>	11:45'05.077

19° 83 L. EPIS (1'44.706)								
Lap	Seg. 1	Seg. 2	Seg. 3	Seg. 4	Seg. 5	Lap Time	km/h	Local Time
1	1.764	27.352	35.786	25.220	21.528	1'48.109	243.7	11:31'55.707
2	<b>1.740</b>	26.979	33.285	23.811	20.749	1'46.564	<b>247.6</b>	11:33'43.816
3	1.759	26.516	33.165	23.773	20.880	1'46.093	244.2	11:37'16.473
4	1.768	26.128	32.882	23.916	20.827	1'45.521	242.6	11:39'01.994
5	1.770	26.067	32.945	23.818	20.625	1'45.225	242.0	11:40'47.219
6	1.776	<b>25.909</b>	32.817	<b>23.599</b>	20.605	<b>1'44.706</b>	241.5	11:42'31.925
7	1.777	26.804	35.383	24.924	21.586	1'50.474	241.5	11:44'22.399
8	1.758	26.333	<b>32.810</b>	23.627	<b>20.462</b>	1'44.990	243.7	11:46'07.389

20° 35 S. HILL (1'45.012)								
Lap	Seg. 1	Seg. 2	Seg. 3	Seg. 4	Seg. 5	Lap Time	km/h	Local Time
1	1.779	26.775	37.077	25.128	21.894	1'46.994	240.9	11:31'59.418
2	1.778	26.474	32.939	23.565	<b>20.548</b>	1'45.304	240.4	11:35'31.716
3	<b>1.763</b>	<b>26.119</b>	32.977	<b>23.462</b>	20.691	<b>1'45.012</b>	<b>242.6</b>	11:37'16.728
4	1.769	27.337	33.686	24.011	32.632	1'59.435 P	238.8	11:39'16.163
5			33.638	23.811	20.807	3'30.605 P		11:42'46.768
6	1.771	26.239	<b>32.895</b>	23.823	20.994	1'45.722	241.5	11:44'32.490
7	1.775	26.227	32.916	23.521	20.654	1'45.093	241.5	11:46'17.583

21° 12 C. GOBBI (1'45.234)								
Lap	Seg. 1	Seg. 2	Seg. 3	Seg. 4	Seg. 5	Lap Time	km/h	Local Time
1	1.787	26.954	35.852	24.681	21.500	1'47.419	239.3	11:32'23.596
2	<b>1.758</b>	26.340	33.451	24.118	21.109	1'47.419	239.3	11:34'11.015
3	1.763	26.454	33.062	23.927	20.863	1'45.950	<b>244.2</b>	11:35'56.965
4			34.194	24.611	33.068	2'00.090 P	243.1	11:37'57.055
5	1.764	<b>26.093</b>	<b>32.798</b>	<b>23.904</b>	<b>20.675</b>	<b>1'45.234</b>	243.1	11:44'28.607
6	1.766	26.266	33.269	24.119	20.838	1'46.258	242.6	11:46'14.865

22° 6 D. STIRPE (1'45.348)								
Lap	Seg. 1	Seg. 2	Seg. 3	Seg. 4	Seg. 5	Lap Time	km/h	Local Time
1	1.755	27.138	35.471	24.708	21.427	1'48.176	244.8	11:31'56.260
2	1.731	26.416	33.951	24.306	21.026	1'48.176	244.8	11:33'44.436
3	1.720	26.416	33.588	23.718	<b>20.694</b>	1'46.147	247.6	11:35'30.583
4			37.686	26.148	33.527	2'05.822 P	<b>249.3</b>	11:37'36.405
5	1.774	26.348	33.007	<b>23.620</b>	20.717	1'45.466	242.6	11:44'25.873
6	1.740	<b>26.114</b>	33.008	23.711	20.775	<b>1'45.348</b>	248.2	11:46'11.221

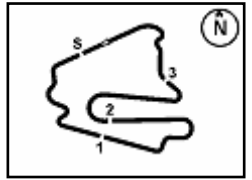
23° 50 B. ORTT (1'46.133)								
Lap	Seg. 1	Seg. 2	Seg. 3	Seg. 4	Seg. 5	Lap Time	km/h	Local Time
1	1.797	27.281	35.525	25.265	22.207	1'49.258	238.3	11:32'04.762
			34.322	24.720	21.138			11:33'54.020

P = Pits In/Out - C = Lap-Time Cancelled

These data/results cannot be reproduced, stored and/or transmitted in whole or in part by any manner of electronic, mechanical, photocopying, recording, broadcasting or otherwise now known or herein after developed without the previous express consent by the copyright owner, except for reproduction in daily press and regular printed publications on sale to the public within 60 days of the event related to those data/results and always provided that copyright symbol appears together as follows below.

© DORNA WSBK ORGANIZATION Srl 2016



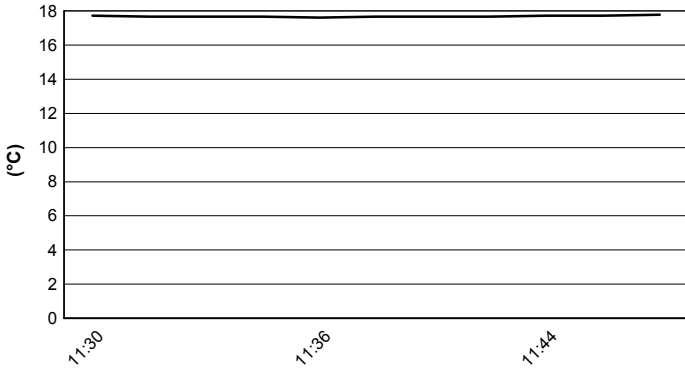


Lausitzring 4.265 m

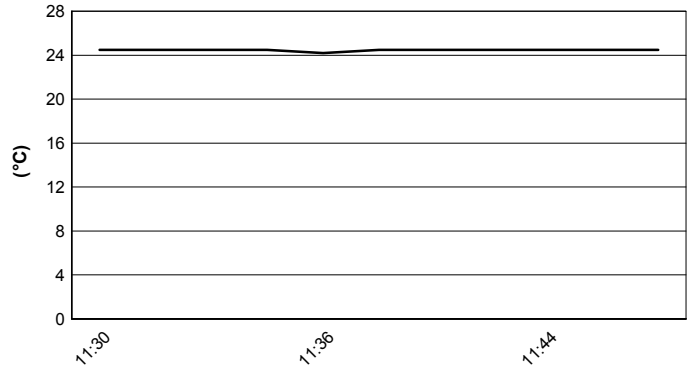
**German Round, 16-17-18 September 2016**  
**World Supersport - Weather Report Superpole 1**

Session started 11:30      Session ended 11:47

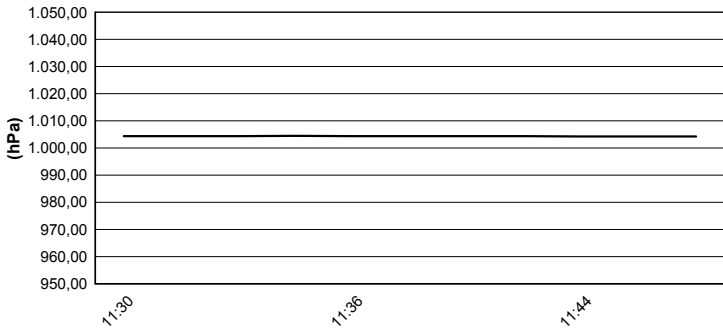
### Air Temperature



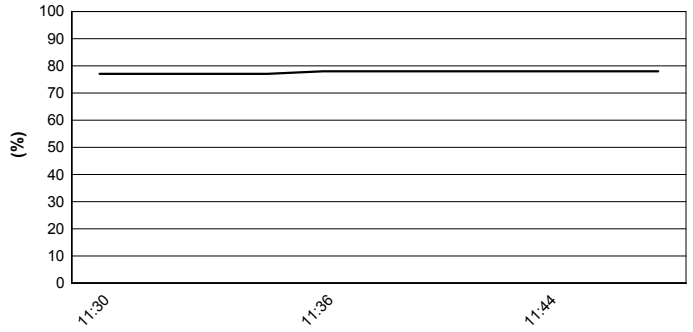
### Track Temperature



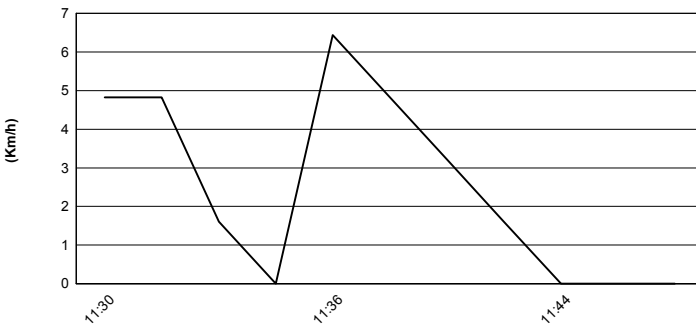
### Air Pressure



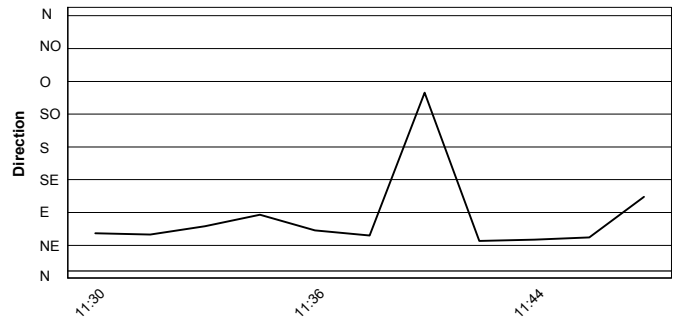
### Humidity



### Wind Speed



### Wind Direction



These data/results cannot be reproduced, stored and/or transmitted in whole or in part by any manner of electronic, mechanical, photocopying, recording, broadcasting or otherwise now known or herein after developed without the previous express consent by the copyright owner, except for reproduction in daily press and regular printed publications on sale to the public within 60 days of the event related to those data/results and always provided that copyright symbol appears together as follows below.  
© DORNA WSBK ORGANIZATION Srl 2016

