

Lausitzring 4.265 m

1 / 2

German Round, 16-17-18 September 2016

World Supersport - Results Warm Up

No.	Rider	Nat	Team	Bike	Class	Time	Gap	Rel.	Laps	Speed	
										Avg	Max
1	1 K. SOFUOGLU	TUR	Kawasaki Puccetti Racing	Kawasaki ZX-6R		1'41.328			8	151,528	251,1
2	66 N. TUULI	FIN	Kallio Racing	Yamaha YZF R6		1'41.811	0.483	0.483	8	150,809	251,7
3	71 C. BERGMAN	SWE	CIA Landlord Insurance Honda	Honda CBR600RR		1'42.107	0.779	0.296	8	150,372	250,5
4	2 P. JACOBSEN	USA	Honda World Supersport Team	Honda CBR600RR		1'42.118	0.790	0.011	8	150,355	255,9
5	16 J. CLUZEL	FRA	MV Agusta Reparto Corse	MV Agusta F3 675		1'42.296	0.968	0.178	8	150,094	249,3
6	25 A. BALDOLINI	ITA	Race Department ATK#25	MV Agusta F3 675		1'42.364	1.036	0.068	8	149,994	252,8
7	21 R. KRUMMENACHER	SUI	Kawasaki Puccetti Racing	Kawasaki ZX-6R		1'42.411	1.083	0.047	6	149,925	247,6
8	81 L. STAPLEFORD	GBR	Profile Racing	Triumph Daytona 675		1'42.520	1.192	0.109	8	149,766	251,1
9	64 F. CARICASULO	ITA	Bardahl Evan Bros. Honda Racing	Honda CBR600RR		1'42.673	1.345	0.153	8	149,543	249,3
10	61 A. ZACCONE	ITA	San Carlo Team Italia	Kawasaki ZX-6R	ESS	1'43.002	1.674	0.329	8	149,065	249,9
11	77 K. RYDE	GBR	Schmidt Racing	Kawasaki ZX-6R		1'43.009	1.681	0.007	8	149,055	251,7
12	87 L. ZANETTI	ITA	MV Agusta Reparto Corse	MV Agusta F3 675		1'43.241	1.913	0.232	8	148,720	250,5
13	55 I. MIKHALCHIK	UKR	DS Junior Team	Kawasaki ZX-6R	ESS	1'43.255	1.927	0.014	8	148,700	247,6
14	78 H. OKUBO	JPN	CIA Landlord Insurance Honda	Honda CBR600RR		1'43.259	1.931	0.004	8	148,694	248,2
15	63 Z. KHAIRUDDIN	MAS	Orelac Racing VerdNatura	Kawasaki ZX-6R		1'43.289	1.961	0.030	7	148,651	252,3
16	44 R. ROLFO	ITA	Team Factory Vamag	MV Agusta F3 675		1'43.294	1.966	0.005	8	148,644	248,2
17	19 K. WAHR	GER	Gemar Balloons - Team Lorini	Honda CBR600RR		1'43.321	1.993	0.027	8	148,605	248,8
18	47 A. BASSANI	ITA	San Carlo Team Italia	Kawasaki ZX-6R	ESS	1'43.389	2.061	0.068	8	148,507	254,6
19	11 C. GAMARINO	ITA	Team GoEleven	Kawasaki ZX-6R		1'43.494	2.166	0.105	8	148,356	247,0
20	22 E. LAHTI	FIN	Team Suzuki Stoneline-Mayer	Suzuki GSX-R600		1'43.561	2.233	0.067	8	148,260	243,7
21	65 M. CANDUCCI	ITA	GRT Racing Team	MV Agusta F3 675		1'43.591	2.263	0.030	8	148,218	245,3
22	69 O. JEZEK	CZE	Team GoEleven	Kawasaki ZX-6R		1'43.838	2.510	0.247	8	147,865	248,2
23	38 H. SOOMER	EST	Kallio Racing	Yamaha YZF R6		1'44.059	2.731	0.221	8	147,551	247,6
24	6 D. STIRPE	ITA	Scuderia Maranga Racing	Kawasaki ZX-6R	ESS	1'44.182	2.854	0.123	8	147,377	249,9
25	111 K. SMITH	GBR	CIA Landlord Insurance Honda	Honda CBR600RR		1'44.283	2.955	0.101	7	147,234	248,8
26	10 N. CALERO	ESP	Orelac Racing VerdNatura	Kawasaki ZX-6R		1'44.516	3.188	0.233	7	146,906	251,1
27	83 L. EPIS	AUS	Response RE Racing	Kawasaki ZX-6R		1'44.675	3.347	0.159	8	146,683	247,6
28	4 G. REA	GBR	GRT Racing Team	MV Agusta F3 675		1'44.737	3.409	0.062	3	146,596	246,5
29	12 C. GOBBI	ITA	VFT Racing	Yamaha YZF R6	ESS	1'45.085	3.757	0.348	7	146,110	249,3
30	23 C. TANGRE	FRA	Team Yohann Moto Sport	Suzuki GSX-R600	ESS	1'45.569	4.241	0.484	8	145,440	244,8
31	35 S. HILL	GBR	CIA Landlord Insurance Honda	Honda CBR600RR		1'45.875	4.547	0.306	7	145,020	244,8
32	50 B. ORTT	CAN	WILSport Racedays Honda	Honda CBR600RR	ESS	1'46.137	4.809	0.262	7	144,662	244,8
33	49 C. TOBLEWSKI	USA	MTM / HS Kawasaki	Kawasaki ZX-6R	ESS	1'52.811	11.483	6.674	7	136,104	243,7
34	7 A. LICCIARDI	BEL	R2 MotorRacing Team	Kawasaki ZX-6R	ESS				0		
35	86 A. BADOVINI	ITA	Gemar Balloons - Team Lorini	Honda CBR600RR					0		

Qualifying Lap Time (107% of 1'41.328): 1'48.422

AIR	Humidity:	78%	Temp:	13°C
TRACK	Condition:	Dry	Temp:	18°C

Lap Record:	2016 K.Sofuoglu	1'40.778	152,350	Km/h
	2007 K.Sofuoglu	1'41.946	150,610	Km/h

These data/results cannot be reproduced, stored and/or transmitted in whole or in part by any manner of electronic, mechanical, photocopying, recording, broadcasting or otherwise now known or herein after developed without the previous express consent by the copyright owner, except for reproduction in daily press and regular printed publications on sale to the public within 60 days of the event related to those data/results and always provided that copyright symbol appears together as follows below.

© DORNA WSBK ORGANIZATION Srl 2016

Start	End	The results are provisional until the end of the time limit for protests and appeals
18/09/2016 08:59	09:17	and the completion of the technical checks.

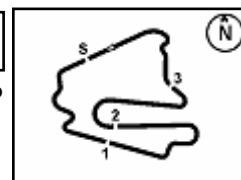
FICR PERUGIA TIMING



Official Tyre Supplier



Official Timekeeper



German Round, 16-17-18 September 2016

World Supersport - Results Warm Up

Session Highlights

08.59.51		Start
09.04.14	Hill	Time Deleted - Exit Track Limits Turn 1
09.05.46	Bassani	Time Deleted - Exit Track Limits Turn 1
09.06.21	Rea	Stop - Technical Problem
09.07.37	Stirpe	Time Deleted - Exit Track Limits Turn 1
09.09.25	Rolfo	Time Deleted - Exit Track Limits Turn 1
09.12.53	Soomer	Time Deleted - Exit Track Limits Turn 1
09.13.25	Khairuddin	Time Deleted - Exit Track Limits Turn 1
09.13.33	Calero	Time Deleted - Exit Track Limits Turn 1
09.17.41		End Of Session

Fastest Laps Sequence

No.	Rider	Nat	Team	Bike	Local Time	Time	Gap	Avg
83	L. EPIS	AUS	Response RE Racing	Kawasaki ZX-6R	09:03'36.280	1'47.845		142,371
61	A. ZACCONE	ITA	San Carlo Team Italia	Kawasaki ZX-6R	09:03'39.090	1'46.186	-1.659	144,595
66	N. TUULI	FIN	Kallio Racing	Yamaha YZF R6	09:03'39.425	1'46.047	-0.139	144,785
77	K. RYDE	GBR	Schmidt Racing	Kawasaki ZX-6R	09:03'42.298	1'45.003	-1.044	146,224
19	K. WAHR	GER	Gemar Balloons - Team Lorini	Honda CBR600RR	09:03'50.535	1'44.734	-0.269	146,600
66	N. TUULI	FIN	Kallio Racing	Yamaha YZF R6	09:05'22.745	1'43.320	-1.414	148,606
66	N. TUULI	FIN	Kallio Racing	Yamaha YZF R6	09:07'05.421	1'42.676	-0.644	149,538
66	N. TUULI	FIN	Kallio Racing	Yamaha YZF R6	09:08'47.656	1'42.235	-0.441	150,183
1	K. SOFUOGLU	TUR	Kawasaki Puccetti Racing	Kawasaki ZX-6R	09:09'13.298	1'41.776	-0.459	150,861
1	K. SOFUOGLU	TUR	Kawasaki Puccetti Racing	Kawasaki ZX-6R	09:14'21.530	1'41.328	-0.448	151,528

These data/results cannot be reproduced, stored and/or transmitted in whole or in part by any manner of electronic, mechanical, photocopying, recording, broadcasting or otherwise now known or herein after developed without the previous express consent by the copyright owner, except for reproduction in daily press and regular printed publications on sale to the public within 60 days of the event related to those data/results and always provided that copyright symbol appears together as follows below.

© DORNA WSBK ORGANIZATION Srl 2016

Start	End	The results are provisional until the end of the time limit for protests and appeals
18/09/2016 08:59	09:17	and the completion of the technical checks.

FICR PERUGIA TIMING



Official Tyre Supplier



Official Timekeeper

German Round, 16-17-18 September 2016

World Supersport - Best Sector & Speed Warm Up

Best Lap		
1	1 K. SOFUOGLU	Kawasaki ZX-6R 1'41.328
2	66 N. TUULI	Yamaha YZF R6 1'41.811
3	71 C. BERGMAN	Honda CBR600RR 1'42.107
4	2 P. JACOBSEN	Honda CBR600RR 1'42.118
5	16 J. CLUZEL	MV Austa F3 675 1'42.296
6	25 A. BALDOLINI	MV Austa F3 675 1'42.364
7	21 R. KRUMMENACHER	Kawasaki ZX-6R 1'42.411
8	81 L. STAPLEFORD	Triumph Daytona 675 1'42.520
9	64 F. CARICASULO	Honda CBR600RR 1'42.673
10	61 A. ZACCONE	Kawasaki ZX-6R 1'43.002
11	77 K. RYDE	Kawasaki ZX-6R 1'43.009
12	87 L. ZANETTI	MV Austa F3 675 1'43.241
13	55 I. MIKHALCHIK	Kawasaki ZX-6R 1'43.255
14	78 H. OKUBO	Honda CBR600RR 1'43.259
15	63 Z. KHAIRUDDIN	Kawasaki ZX-6R 1'43.289
16	44 R. ROLFO	MV Austa F3 675 1'43.294
17	19 K. WAHR	Honda CBR600RR 1'43.321
18	47 A. BASSANI	Kawasaki ZX-6R 1'43.389
19	11 C. GAMARINO	Kawasaki ZX-6R 1'43.494
20	22 E. LAHTI	Suzuki GSX-R600 1'43.561
21	65 M. CANDUCCI	MV Austa F3 675 1'43.591
22	69 O. JEZEK	Kawasaki ZX-6R 1'43.838
23	38 H. SOOMER	Yamaha YZF R6 1'44.059
24	6 D. STIRPE	Kawasaki ZX-6R 1'44.182
25	111 K. SMITH	Honda CBR600RR 1'44.283
26	10 N. CALERO	Kawasaki ZX-6R 1'44.516
27	83 L. EPIS	Kawasaki ZX-6R 1'44.675
28	4 G. REA	MV Austa F3 675 1'44.737
29	12 C. GOBBI	Yamaha YZF R6 1'45.085
30	23 C. TANGRE	Suzuki GSX-R600 1'45.569
31	35 S. HILL	Honda CBR600RR 1'45.875
32	50 B. ORTT	Honda CBR600RR 1'46.137
33	49 C. TOBOLEWSKI	Kawasaki ZX-6R 1'52.811
34	7 A. LICCIARDI	Kawasaki ZX-6R
35	86 A. BADOVINI	Honda CBR600RR

Best Sector & Speed		
1	2 P. JACOBSEN	Honda CBR600RR 255.9
2	47 A. BASSANI	Kawasaki ZX-6R 254.6
3	25 A. BALDOLINI	MV Austa F3 675 252.8
4	63 Z. KHAIRUDDIN	Kawasaki ZX-6R 252.3
5	66 N. TUULI	Yamaha YZF R6 251.7
6	77 K. RYDE	Kawasaki ZX-6R 251.7
7	81 L. STAPLEFORD	Triumph Daytona 675 251.1
8	1 K. SOFUOGLU	Kawasaki ZX-6R 251.1
9	10 N. CALERO	Kawasaki ZX-6R 251.1
10	71 C. BERGMAN	Honda CBR600RR 250.5
11	87 L. ZANETTI	MV Austa F3 675 250.5
12	6 D. STIRPE	Kawasaki ZX-6R 249.9
13	61 A. ZACCONE	Kawasaki ZX-6R 249.9
14	16 J. CLUZEL	MV Austa F3 675 249.3
15	64 F. CARICASULO	Honda CBR600RR 249.3
16	12 C. GOBBI	Yamaha YZF R6 249.3
17	111 K. SMITH	Honda CBR600RR 248.8
18	19 K. WAHR	Honda CBR600RR 248.2
19	69 O. JEZEK	Kawasaki ZX-6R 248.2
20	78 H. OKUBO	Honda CBR600RR 248.2
21	44 R. ROLFO	MV Austa F3 675 248.2
22	21 R. KRUMMENACHER	Kawasaki ZX-6R 247.6
23	83 L. EPIS	Kawasaki ZX-6R 247.6
24	38 H. SOOMER	Yamaha YZF R6 247.6
25	55 I. MIKHALCHIK	Kawasaki ZX-6R 247.6
26	11 C. GAMARINO	Kawasaki ZX-6R 247.0
27	4 G. REA	MV Austa F3 675 246.5
28	65 M. CANDUCCI	MV Austa F3 675 246.5
29	35 S. HILL	Honda CBR600RR 244.8
30	23 C. TANGRE	Suzuki GSX-R600 244.8
31	50 B. ORTT	Honda CBR600RR 244.8
32	49 C. TOBOLEWSKI	Kawasaki ZX-6R 243.7
33	22 E. LAHTI	Suzuki GSX-R600 243.7

Seg. 1	Seg. 2	Seg. 3	Seg. 4	Seg. 5
1 2 P. JACOBSEN 1.677	1 71 C. BERGMAN 25.106	1 1 K. SOFUOGLU 31.638	1 1 K. SOFUOGLU 22.820	1 2 P. JACOBSEN 19.857
2 47 A. BASSANI 1.687	2 1 K. SOFUOGLU 25.141	2 66 N. TUULI 31.739	2 66 N. TUULI 22.948	2 1 K. SOFUOGLU 19.876
3 77 K. RYDE 1.697	3 16 J. CLUZEL 25.209	3 16 J. CLUZEL 31.780	3 25 A. BALDOLINI 22.994	3 81 L. STAPLEFORD 19.942
4 63 Z. KHAIRUDDIN 1.698	4 2 P. JACOBSEN 25.290	4 21 R. KRUMMENAC 31.877	4 71 C. BERGMAN 22.995	4 71 C. BERGMAN 19.953
5 1 K. SOFUOGLU 1.699	5 25 A. BALDOLINI 25.338	5 64 F. CARICASULO 31.971	5 81 L. STAPLEFORD 23.114	5 66 N. TUULI 19.957
6 66 N. TUULI 1.699	6 64 F. CARICASULO 25.367	6 71 C. BERGMAN 32.036	6 64 F. CARICASULO 23.128	6 25 A. BALDOLINI 20.046
7 25 A. BALDOLINI 1.703	7 66 N. TUULI 25.386	7 78 H. OKUBO 32.041	7 19 K. WAHR 23.135	7 77 K. RYDE 20.071
8 81 L. STAPLEFORD 1.708	8 21 R. KRUMMENAC 25.459	8 81 L. STAPLEFORD 32.044	8 21 R. KRUMMENAC 23.191	8 64 F. CARICASULO 20.083
9 64 F. CARICASULO 1.710	9 81 L. STAPLEFORD 25.532	9 2 P. JACOBSEN 32.051	9 22 E. LAHTI 23.199	9 61 A. ZACCONE 20.104
10 71 C. BERGMAN 1.711	10 87 L. ZANETTI 25.586	10 65 M. CANDUCCI 32.083	10 2 P. JACOBSEN 23.221	10 11 C. GAMARINO 20.134
11 10 N. CALERO 1.712	11 55 I. MIKHALCHIK 25.618	11 25 A. BALDOLINI 32.088	11 47 A. BASSANI 23.244	11 16 J. CLUZEL 20.147
12 6 D. STIRPE 1.714	12 78 H. OKUBO 25.625	12 61 A. ZACCONE 32.105	12 55 I. MIKHALCHIK 23.262	12 21 R. KRUMMENAC 20.150
13 87 L. ZANETTI 1.719	13 61 A. ZACCONE 25.627	13 63 Z. KHAIRUDDIN 32.121	13 78 H. OKUBO 23.269	13 55 I. MIKHALCHIK 20.194
14 12 C. GOBBI 1.723	14 77 K. RYDE 25.632	14 47 A. BASSANI 32.130	14 44 R. ROLFO 23.287	14 63 Z. KHAIRUDDIN 20.204
15 111 K. SMITH 1.723	15 65 M. CANDUCCI 25.650	15 77 K. RYDE 32.134	15 69 O. JEZEK 23.311	15 22 E. LAHTI 20.205
16 61 A. ZACCONE 1.723	16 22 E. LAHTI 25.686	16 87 L. ZANETTI 32.158	16 11 C. GAMARINO 23.334	16 44 R. ROLFO 20.208
17 78 H. OKUBO 1.725	17 44 R. ROLFO 25.722	17 19 K. WAHR 32.190	17 16 J. CLUZEL 23.343	17 47 A. BASSANI 20.217
18 19 K. WAHR 1.725	18 19 K. WAHR 25.754	18 55 I. MIKHALCHIK 32.197	18 87 L. ZANETTI 23.376	18 19 K. WAHR 20.230
19 69 O. JEZEK 1.728	19 63 Z. KHAIRUDDIN 25.760	19 44 R. ROLFO 32.236	19 77 K. RYDE 23.398	19 78 H. OKUBO 20.242
20 16 J. CLUZEL 1.728	20 69 O. JEZEK 25.768	20 4 G. REA 32.240	20 63 Z. KHAIRUDDIN 23.418	20 38 H. SOOMER 20.332
21 83 L. EPIS 1.731	21 11 C. GAMARINO 25.811	21 38 H. SOOMER 32.328	21 61 A. ZACCONE 23.429	21 111 K. SMITH 20.370
22 44 R. ROLFO 1.732	22 47 A. BASSANI 25.816	22 11 C. GAMARINO 32.339	22 38 H. SOOMER 23.469	22 87 L. ZANETTI 20.379
23 65 M. CANDUCCI 1.734	23 10 N. CALERO 25.857	23 22 E. LAHTI 32.355	23 6 D. STIRPE 23.470	23 10 N. CALERO 20.392
24 21 R. KRUMMENAC 1.734	24 38 H. SOOMER 25.884	24 111 K. SMITH 32.373	24 111 K. SMITH 23.491	24 4 G. REA 20.398
25 55 I. MIKHALCHIK 1.735	25 83 L. EPIS 25.915	25 69 O. JEZEK 32.453	25 65 M. CANDUCCI 23.530	25 83 L. EPIS 20.433
26 38 H. SOOMER 1.736	26 4 G. REA 25.964	26 6 D. STIRPE 32.472	26 4 G. REA 23.621	26 65 M. CANDUCCI 20.433
27 11 C. GAMARINO 1.736	27 6 D. STIRPE 26.005	27 10 N. CALERO 32.610	27 83 L. EPIS 23.627	27 12 C. GOBBI 20.447
28 4 G. REA 1.741	28 111 K. SMITH 26.012	28 12 C. GOBBI 32.642	28 10 N. CALERO 23.769	28 69 O. JEZEK 20.487
29 22 E. LAHTI 1.750	29 23 C. TANGRE 26.016	29 23 C. TANGRE 32.683	29 23 C. TANGRE 23.810	29 6 D. STIRPE 20.509
30 35 S. HILL 1.752	30 12 C. GOBBI 26.075	30 83 L. EPIS 32.689	30 35 S. HILL 23.883	30 35 S. HILL 20.697
31 49 C. TOBOLEWSKI 1.752	31 50 B. ORTT 26.330	31 35 S. HILL 32.973	31 12 C. GOBBI 23.890	31 23 C. TANGRE 20.819
32 23 C. TANGRE 1.755	32 35 S. HILL 26.412	32 50 B. ORTT 33.047	32 50 B. ORTT 24.002	32 50 B. ORTT 20.867
33 50 B. ORTT 1.755	33 49 C. TOBOLEWSKI 28.018	33 49 C. TOBOLEWSKI 35.478	33 49 C. TOBOLEWSKI 25.261	33 49 C. TOBOLEWSKI 21.652

18/09/2016

These data/results cannot be reproduced, stored and/or transmitted in whole or in part by any manner of electronic, mechanical, photocopying, recording, broadcasting or otherwise now known or herein after developed without the previous express consent by the copyright owner, except for reproduction in daily press and regular printed publications on sale to the public within 60 days of the event related to those data/results and always provided that copyright symbol appears together as follows below.

© DORNA WSBK ORGANIZATION Srl 2016

FICR PERUGIA TIMING



Official Tyre Supplier



Official Timekeeper



Lausitzring 4.265 m

1 / 2

German Round, 16-17-18 September 2016

World Supersport - Ideal Times Warm Up

No.	Rider	Nat	Bike	Seg. 1 Diff. 1	Seg. 2 Diff. 2	Seg. 3 Diff. 3	Seg. 4 Diff. 4	Seg. 5 Diff. 5	Ideal Time Best Lap	Pos.	Diff.
1	1 K. SOFUOGLU	TUR	Kawasaki ZX-6R	1.699 0.015	25.141 0.061	31.638	22.820 0.078	19.876	1'41.174 1'41.328	3	0.154
2	66 N. TUULI	FIN	Yamaha YZF R6	1.699 0.022	25.386	31.739	22.948 0.060	19.957	1'41.729 1'41.811	4	0.082
3	71 C. BERGMAN	SWE	Honda CBR600RR	1.711 0.017	25.106	32.036	22.995 0.097	19.953 0.192	1'41.801 1'42.107	5	0.306
4	2 P. JACOBSEN	USA	Honda CBR600RR	1.677 0.022	25.290	32.051	23.221	19.857	1'42.096 1'42.118	6	0.022
5	25 A. BALDOLINI	ITA	MV Agusta F3 675	1.703 0.030	25.338 0.089	32.088 0.053	22.994	20.046 0.023	1'42.169 1'42.364	8	0.195
6	16 J. CLUZEL	FRA	MV Agusta F3 675	1.728 0.006	25.209	31.780 0.003	23.343 0.052	20.147 0.028	1'42.207 1'42.296	7	0.089
7	64 F. CARICASULO	ITA	Honda CBR600RR	1.710 0.015	25.367	31.971 0.393	23.128	20.083 0.006	1'42.259 1'42.673	11	0.414
8	81 L. STAPLEFORD	GBR	Triumph Daytona 675	1.708 0.012	25.532 0.131	32.044	23.114 0.037	19.942	1'42.340 1'42.520	10	0.180
9	21 R. KRUMMENACHER	SUI	Kawasaki ZX-6R	1.734	25.459	31.877	23.191	20.150	1'42.411 1'42.411	9	0.000
10	78 H. OKUBO	JPN	Honda CBR600RR	1.725 0.007	25.625 0.103	32.041	23.269 0.240	20.242 0.007	1'42.902 1'43.259	16	0.357
11	77 K. RYDE	GBR	Kawasaki ZX-6R	1.697 0.007	25.632	32.134 0.028	23.398	20.071 0.042	1'42.932 1'43.009	13	0.077
12	61 A. ZACCONE	ITA	Kawasaki ZX-6R	1.723 0.014	25.627	32.105	23.429	20.104	1'42.988 1'43.002	12	0.014
13	55 I. MIKHALCHIK	UKR	Kawasaki ZX-6R	1.735 0.020	25.618 0.138	32.197	23.262 0.091	20.194	1'43.006 1'43.255	15	0.249
14	19 K. WAHR	GER	Honda CBR600RR	1.725 0.013	25.754	32.190 0.091	23.135	20.230 0.183	1'43.034 1'43.321	19	0.287
15	47 A. BASSANI	ITA	Kawasaki ZX-6R	1.687 0.028	25.816 0.068	32.130 0.118	23.244 0.075	20.217 0.006	1'43.094 1'43.389	20	0.295
16	44 R. ROLFO	ITA	MV Agusta F3 675	1.732 0.007	25.722 0.058	32.236	23.287	20.208 0.044	1'43.185 1'43.294	18	0.109
17	22 E. LAHTI	FIN	Suzuki GSX-R600	1.750	25.686 0.052	32.355 0.090	23.199 0.100	20.205 0.124	1'43.195 1'43.561	22	0.366
18	63 Z. KHAIRUDDIN	MAS	Kawasaki ZX-6R	1.698 0.014	25.760	32.121 0.074	23.418	20.204	1'43.201 1'43.289	17	0.088
19	87 L. ZANETTI	ITA	MV Agusta F3 675	1.719 0.023	25.586	32.158	23.376	20.379	1'43.218 1'43.241	14	0.023
20	11 C. GAMARINO	ITA	Kawasaki ZX-6R	1.736	25.811 0.135	32.339 0.005	23.334	20.134	1'43.354 1'43.494	21	0.140
21	65 M. CANDUCCI	ITA	MV Agusta F3 675	1.734 0.016	25.650 0.098	32.083	23.530	20.433 0.047	1'43.430 1'43.591	23	0.161
22	69 O. JEZEK	CZE	Kawasaki ZX-6R	1.728 0.024	25.768	32.453	23.311	20.487 0.067	1'43.747 1'43.838	24	0.091
23	38 H. SOOMER	EST	Yamaha YZF R6	1.736 0.011	25.884 0.228	32.328 0.066	23.469 0.005	20.332	1'43.749 1'44.059	25	0.310
24	4 G. REA	GBR	MV Agusta F3 675	1.741 0.017	25.964 0.232	32.240 0.524	23.621	20.398	1'43.964 1'44.737	30	0.773
25	111 K. SMITH	GBR	Honda CBR600RR	1.723 0.028	26.012 0.198	32.373 0.066	23.491 0.022	20.370	1'43.969 1'44.283	27	0.314
26	6 D. STIRPE	ITA	Kawasaki ZX-6R	1.714 0.001	26.005 0.008	32.472	23.470	20.509 0.003	1'44.170 1'44.182	26	0.012
27	10 N. CALERO	ESP	Kawasaki ZX-6R	1.712 0.026	25.857	32.610	23.769	20.392 0.150	1'44.340 1'44.516	28	0.176
28	83 L. EPIS	AUS	Kawasaki ZX-6R	1.731 0.010	25.915	32.689	23.627 0.270	20.433	1'44.395 1'44.675	29	0.280
29	12 C. GOBBI	ITA	Yamaha YZF R6	1.723 0.012	26.075	32.642	23.890	20.447 0.296	1'44.777 1'45.085	31	0.308
30	23 C. TANGRE	FRA	Suzuki GSX-R600	1.755 0.027	26.016 0.146	32.683 0.121	23.810 0.145	20.819 0.047	1'45.083 1'45.569	32	0.486
31	35 S. HILL	GBR	Honda CBR600RR	1.752 0.022	26.412 0.072	32.973	23.883	20.697 0.064	1'45.717 1'45.875	33	0.158

18/09/2016

These data/results cannot be reproduced, stored and/or transmitted in whole or in part by any manner of electronic, mechanical, photocopying, recording, broadcasting or otherwise now known or herein after developed without the previous express consent by the copyright owner, except for reproduction in daily press and regular printed publications on sale to the public within 60 days of the event related to those data/results and always provided that copyright symbol appears together as follows below.

© DORNA WSBK ORGANIZATION Srl 2016

FICR PERUGIA TIMING



Official Tyre Supplier



Official Timekeeper



Lausitzring 4.265 m

2 / 2

No.	Rider	Nat	Bike	Seg. 1	Seg. 2	Seg. 3	Seg. 4	Seg. 5	Ideal Time		
				Diff. 1	Diff. 2	Diff. 3	Diff. 4	Diff. 5	Best Lap	Pos.	Diff.
32	50 B. ORTT	CAN	Honda CBR600RR	1.755 0.012	26.330 0.061	33.047	24.002	20.867 0.063	1'46.001 1'46.137	34	0.136
33	49 C. TOBOLEWSKI	USA	Kawasaki ZX-6R	1.752 0.031	28.018	35.478 0.219	25.261 0.282	21.652 0.118	1'52.161 1'52.811	35	0.650
Overall Ideal Time				1.677	25.106	31.638	22.820	19.857	1'41.098		

18/09/2016

These data/results cannot be reproduced, stored and/or transmitted in whole or in part by any manner of electronic, mechanical, photocopying, recording, broadcasting or otherwise now known or herein after developed without the previous express consent by the copyright owner, except for reproduction in daily press and regular printed publications on sale to the public within 60 days of the event related to those data/results and always provided that copyright symbol appears together as follows below.
© DORNA WSBK ORGANIZATION Srl 2016

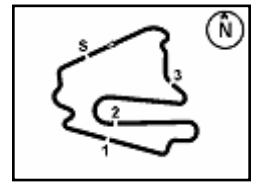
FICR PERUGIA TIMING



Official Tyre Supplier



Official Timekeeper



German Round, 16-17-18 September 2016

World Supersport - Chronological Analysis Warm Up

27° 83 L. EPIS (1'44.675)

Lap	Seg. 1	Seg. 2	Seg. 3	Seg. 4	Seg. 5	Lap Time	km/h	Local Time
1	1.771	27.131	34.128	24.670	21.070	1'47.845	242.6	9:01'48.435
2	1.769	26.563	33.295	24.521	21.127	1'46.313	242.6	9:03'36.280
3	1.761	26.595	33.329	23.765	20.435	1'45.885	243.7	9:07'08.478
4	1.741	25.915	32.689	23.897	20.433	1'44.675	246.5	9:08'53.153
5	1.745	25.942	32.946	23.710	20.535	1'44.878	245.9	9:10'38.031
6	1.750	25.962	33.084	23.865	20.678	1'45.339	244.8	9:12'23.370
7	1.745	26.073	32.785	23.627	20.556	1'44.786	245.9	9:14'08.156
8	1.731	28.210	33.565	24.482	20.638	1'48.626	247.6	9:15'56.782

28° 4 G. REA (1'44.737)

Lap	Seg. 1	Seg. 2	Seg. 3	Seg. 4	Seg. 5	Lap Time	km/h	Local Time
1	1.766	27.230	33.387	24.289	20.848	1'47.520	243.1	9:04'05.887
2	1.758	26.196	32.764	23.621	20.398	1'44.737	244.2	9:05'50.624
3	1.741	25.964	32.240	30.775	1'04.580	2'35.300 P	246.5	9:08'25.924

29° 12 C. GOBBI (1'45.085)

Lap	Seg. 1	Seg. 2	Seg. 3	Seg. 4	Seg. 5	Lap Time	km/h	Local Time
1			33.907	24.638	20.961			9:02'19.717
2	1.723	26.931	33.462	24.022	20.634	1'46.772	249.3	9:04'06.489
3	1.732	26.568	33.241	24.069	20.888	1'46.498	246.5	9:05'52.987
4	1.750	29.075	35.883	24.275	20.559	1'51.542	245.3	9:07'44.529
5	1.747	26.625	33.369	23.994	20.447	1'46.182	245.3	9:09'30.711
6	1.735	26.075	32.642	23.890	20.743	1'45.085	247.6	9:11'15.796
7	1.741	28.379	35.344	24.531	32.929	2'02.924 P	246.5	9:13'18.720
8			34.266	24.288	20.844	2'41.510 P		9:16'00.230

30° 23 C. TANGRE (1'45.569)

Lap	Seg. 1	Seg. 2	Seg. 3	Seg. 4	Seg. 5	Lap Time	km/h	Local Time
1	1.777	27.504	35.441	25.022	22.275			9:01'57.455
2	1.767	26.475	33.685	25.313	21.300	1'49.579	241.5	9:03'47.034
3	1.767	26.475	33.024	24.813	21.478	1'47.557	243.1	9:05'34.591
4	1.755	26.887	32.956	24.263	20.880	1'46.741	244.8	9:07'21.332
5	1.763	26.500	32.899	23.935	20.819	1'45.916	243.1	9:09'07.248
6	1.771	26.577	32.712	24.042	21.051	1'46.153	242.0	9:10'53.401
7	1.782	26.162	32.804	23.955	20.866	1'45.569	240.9	9:12'38.970
8	1.786	26.239	32.981	23.925	20.976	1'45.907	239.9	9:14'24.877
9	1.758	26.016	32.683	23.810	24.375	1'48.642	243.1	9:16'13.519

31° 35 S. HILL (1'45.875)

Lap	Seg. 1	Seg. 2	Seg. 3	Seg. 4	Seg. 5	Lap Time	km/h	Local Time
1	1.752	26.802	36.058	24.836	21.130			9:01'58.751
2	1.760	46.629	43.686	25.836	21.646	2'19.557 C	243.7	9:03'45.953
3	1.760	26.657	33.267	24.305	20.806	1'46.795	244.2	9:07'52.305
4	1.763	26.412	33.169	24.592	20.829	1'46.765	243.7	9:09'39.070
5	1.760	26.487	33.072	24.269	20.697	1'46.285	243.7	9:11'25.355
6	1.753	26.448	37.242	24.563	21.182	1'51.188	244.8	9:13'16.543
7	1.774	26.484	32.973	23.883	20.761	1'45.875	242.0	9:15'02.418

32° 50 B. ORTT (1'46.137)

Lap	Seg. 1	Seg. 2	Seg. 3	Seg. 4	Seg. 5	Lap Time	km/h	Local Time
1			35.928	26.699	37.422			9:02'25.201
2			34.438	24.974	21.358	3'09.113 P		9:05'34.314
3	1.781	28.024	33.689	24.745	21.053	1'49.292	240.9	9:07'23.606
4	1.766	26.733	33.437	24.392	21.291	1'47.619	243.1	9:09'11.225
5	1.764	26.891	33.504	25.861	21.521	1'49.341	243.1	9:11'00.566
6	1.755	26.579	33.064	24.264	20.971	1'46.633	244.8	9:12'47.199
7	1.764	26.330	33.225	24.134	20.867	1'46.320	243.1	9:14'33.519
8	1.767	26.391	33.047	24.002	20.930	1'46.137	242.6	9:16'19.656

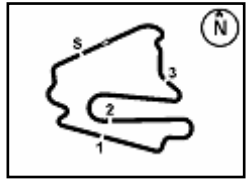
33° 49 C. TOBOLEWSKI (1'52.811)

Lap	Seg. 1	Seg. 2	Seg. 3	Seg. 4	Seg. 5	Lap Time	km/h	Local Time
1	1.785	29.073	36.745	26.209	22.106			9:02'00.738
2	1.782	28.728	35.478	25.261	21.798	1'53.395	237.2	9:03'54.133
3	1.783	28.018	35.697	25.543	21.770	1'52.811	236.7	9:07'41.477
4	1.802	28.692	35.717	25.961	21.916	1'54.088	232.1	9:09'35.565
5	1.752	28.306	35.602	25.854	21.652	1'53.166	243.7	9:11'28.731
6	1.772	28.897	36.264	26.033	22.045	1'55.011	242.0	9:13'23.742
7	1.791	28.655	36.365	25.887	21.856	1'54.554	237.2	9:15'18.296

P = Pits In/Out - C = Lap-Time Cancelled

These data/results cannot be reproduced, stored and/or transmitted in whole or in part by any manner of electronic, mechanical, photocopying, recording, broadcasting or otherwise now known or herein after developed without the previous express consent by the copyright owner, except for reproduction in daily press and regular printed publications on sale to the public within 60 days of the event related to those data/results and always provided that copyright symbol appears together as follows below.

© DORNA WSBK ORGANIZATION Srl 2016

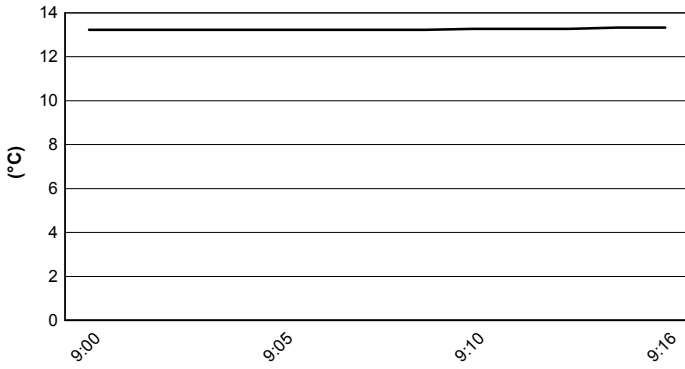


Lausitzring 4.265 m

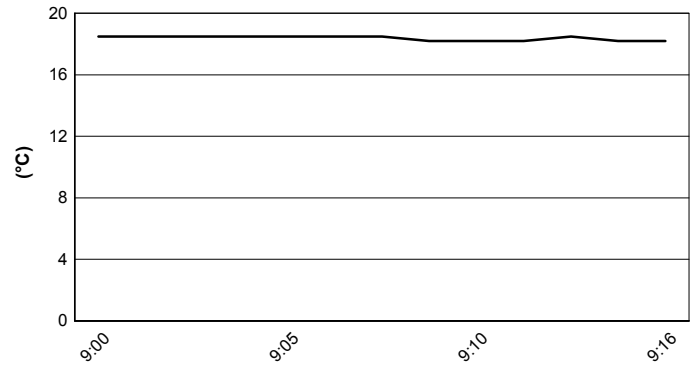
German Round, 16-17-18 September 2016
World Supersport - Weather Report Warm Up

Session started 8:59 Session ended 9:17

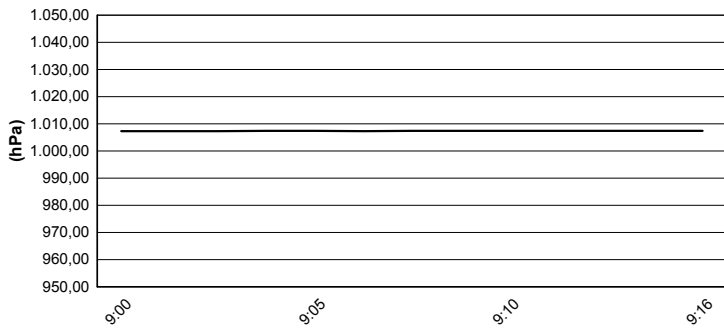
Air Temperature



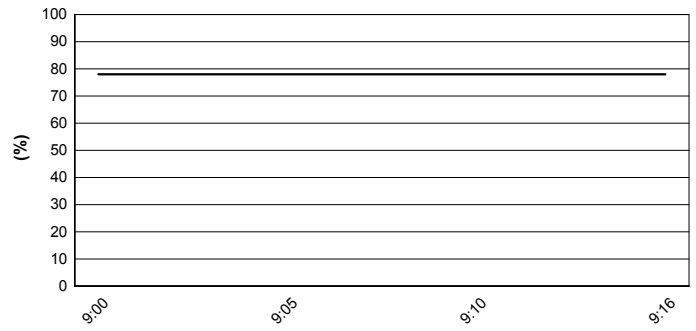
Track Temperature



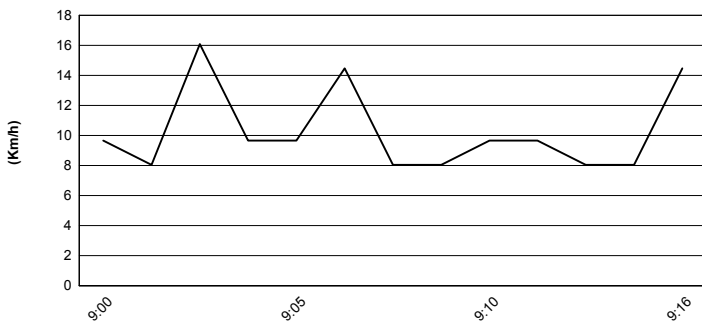
Air Pressure



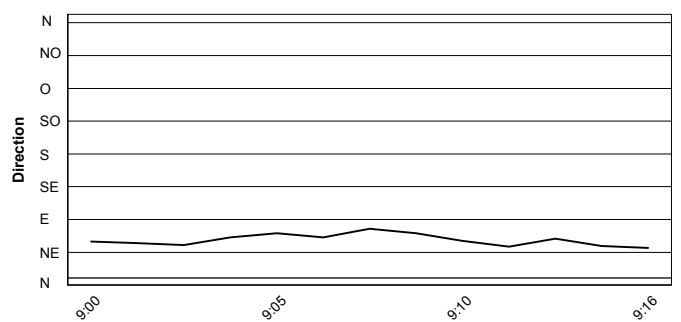
Humidity



Wind Speed

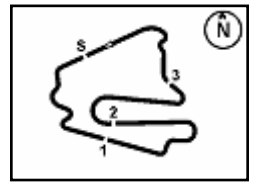


Wind Direction



These data/results cannot be reproduced, stored and/or transmitted in whole or in part by any manner of electronic, mechanical, photocopying, recording, broadcasting or otherwise now known or herein after developed without the previous express consent by the copyright owner, except for reproduction in daily press and regular printed publications on sale to the public within 60 days of the event related to those data/results and always provided that copyright symbol appears together as follows below.
© DORNA WSBK ORGANIZATION Srl 2016





Lausitzring 4.265 m

German Round, 16-17-18 September 2016

World Supersport - Starting Grid

19 Laps x 4,265 km = 81,035 km

1			2			3			4			5			6			7			8			9			10			11			12			13			14			15			16			17			18			19			20			21			22			23			24			25			26			27			28			29			30			31			32			33																																																																																																				
1	SOFUOGLU K.	Kawasaki	1'40.778	SP2	2	66	TUULI N.	Yamaha	1'41.337	SP2	3	4	REA G.	MV Agusta	1'41.470	SP2	4	71	BERGMAN C.	Honda	1'41.605	SP2	5	21	KRUMMENACHER R.	Kawasaki	1'41.609	SP2	6	16	CLUZEL J.	MV Agusta	1'41.647	SP2	7	87	ZANETTI L.	MV Agusta	1'41.673	SP2	8	86	BADOVINI A.	Honda	1'41.870	SP2	9	2	JACOBSEN P.	Honda	1'41.954	SP2	10	81	STAPLEFORD L.	Triumph	1'42.023	SP2	11	64	CARICASULO F.	Honda	1'42.071	SP2	12	111	SMITH K.	Honda	1'42.444	SP2	13	19	WAHR K.	Honda	1'42.563	SP1	14	55	MIKHALCHIK I.	Kawasaki	1'42.565	SP1	15	61	ZACCONE A.	Kawasaki	1'42.687	SP1	16	25	BALDOLINI A.	MV Agusta	1'42.823	SP1	17	77	RYDE K.	Kawasaki	1'42.839	SP1	18	47	BASSANI A.	Kawasaki	1'42.891	SP1	19	44	ROLFO R.	MV Agusta	1'42.957	SP1	20	78	OKUBO H.	Honda	1'43.012	SP1	21	22	LAHTI E.	Suzuki	1'43.050	SP1	22	65	CANDUCCI M.	MV	1'43.058	SP1	23	38	SOOMER H.	Yamaha	1'43.307	SP1	24	63	KHAIRUDDIN Z.	Kawasaki	1'43.339	SP1	25	11	GAMARINO C.	Kawasaki	1'43.721	SP1	26	69	JEZEK O.	Kawasaki	1'44.045	SP1	27	10	CALERO N.	Kawasaki	1'44.338	SP1	28	23	TANGRE C.	Suzuki	1'44.518	SP1	29	83	EPIS L.	Kawasaki	1'44.706	SP1	30	35	HILL S.	Honda	1'45.012	SP1	31	12	GOBBI C.	Yamaha	1'45.234	SP1	32	6	STIRPE D.	Kawasaki	1'45.348	SP1	33	50	ORTT B.	Honda	1'46.133	SP1

Jury President

..... Race Director

These data/results cannot be reproduced, stored and/or transmitted in whole or in part by any manner of electronic, mechanical, photocopying, recording, broadcasting or otherwise now known or herein after developed without the previous express consent by the copyright owner, except for reproduction in daily press and regular printed publications on sale to the public within 60 days of the event related to those data/results and always provided that copyright symbol appears together as follows below.

© DORNA WSBK ORGANIZATION Srl 2016

