

## German Round, 16-17-18 September 2016

### Superstock 1000 - Results Qualifying

No.	Rider	Nat	Team	Bike	Time	Gap	Rel.	Laps	Speed	
									Avg	Max
1	35 R. DE ROSA	ITA	Althea BMW Racing Team	BMW S 1000 RR	<b>1'38.819</b>			14	155,375	<b>278,4</b>
2	54 T. RAZGATLIOGLU	TUR	Kawasaki Puccetti Racing	Kawasaki ZX-10R	<b>1'38.915</b>	0.096	0.096	12	155,224	<b>277,0</b>
3	2 R. TAMBURINI	ITA	Nuova M2 Racing	Aprilia RSV4 RF	<b>1'38.933</b>	0.114	0.018	12	155,196	<b>275,5</b>
4	5 M. FACCANI	ITA	Triple-M Racing	Ducati Panigale R	<b>1'38.984</b>	0.165	0.051	11	155,116	<b>274,8</b>
5	12 M. RINALDI	ITA	Aruba.it Racing - Junior Team	Ducati Panigale R	<b>1'39.089</b>	0.270	0.105	11	154,952	<b>277,0</b>
6	11 J. GUARNONI	FRA	Pedercini Racing Kawasaki	Kawasaki ZX-10R	<b>1'39.520</b>	0.701	0.431	13	154,281	<b>271,4</b>
7	36 L. MERCADO	ARG	Aruba.it Racing - Junior Team	Ducati Panigale R	<b>1'39.680</b>	0.861	0.160	13	154,033	<b>274,1</b>
8	84 R. RUSSO	ITA	PATA Yamaha Official Stock Team	Yamaha YZF R1	<b>1'39.820</b>	1.001	0.140	11	153,817	<b>276,2</b>
9	121 A. ANDREOZZI	ITA	SK-Racing Team by Barni	Ducati Panigale R	<b>1'39.912</b>	1.093	0.092	11	153,675	<b>271,4</b>
10	59 A. MANTOVANI	ITA	Guandalini Racing Yamaha	Yamaha YZF R1	<b>1'40.287</b>	1.468	0.375	12	153,101	<b>276,2</b>
11	15 F. SANDI	ITA	Berclaz Racing by MotoXracing	Yamaha YZF R1	<b>1'40.365</b>	1.546	0.078	11	152,982	<b>272,1</b>
12	123 L. SALVADORI	ITA	Team Motozoo by MotoXracing	Yamaha YZF R1	<b>1'40.437</b>	1.618	0.072	11	152,872	<b>272,1</b>
13	3 S. SUCHET	SUI	Berclaz Racing by MotoXracing	Yamaha YZF R1	<b>1'40.612</b>	1.793	0.175	13	152,606	<b>277,0</b>
14	74 K. CALIA	ITA	Nuova M2 Racing	Aprilia RSV4 RF	<b>1'40.649</b>	1.830	0.037	13	152,550	<b>277,0</b>
15	32 M. MOSER	GER	Triple-M Racing	Ducati Panigale R	<b>1'40.773</b>	1.954	0.124	14	152,362	<b>268,0</b>
16	51 E. VIONNET	SUI	Motos Vionnet	BMW S 1000 RR	<b>1'40.857</b>	2.038	0.084	12	152,235	<b>270,0</b>
17	41 F. D'ANNUNZIO	ITA	FDA Racing Team	BMW S 1000 RR	<b>1'40.867</b>	2.048	0.010	13	152,220	<b>270,7</b>
18	70 L. VITALI	ITA	Team 2R Racing	BMW S 1000 RR	<b>1'40.873</b>	2.054	0.006	12	152,211	<b>273,4</b>
19	77 W. TESSELS	NED	MTM / HS Kawasaki	Kawasaki ZX-10R	<b>1'40.885</b>	2.066	0.012	14	152,193	<b>271,4</b>
20	67 B. STARING	AUS	Agro On-Benjan-Kawasaki	Kawasaki ZX-10R	<b>1'40.976</b>	2.157	0.091	13	152,056	<b>271,4</b>
21	50 B. FONG	USA	Agro On-Benjan-Kawasaki	Kawasaki ZX-10R	<b>1'40.980</b>	2.161	0.004	13	152,050	<b>271,4</b>
22	47 R. HARTOG	NED	Team Hartog - Jenik - Against Cancer	Kawasaki ZX-10R	<b>1'41.100</b>	2.281	0.120	14	151,869	<b>272,1</b>
23	44 A. TUCCI	ITA	Berclaz Racing by MotoXracing	Yamaha YZF R1	<b>1'41.346</b>	2.527	0.246	12	151,501	<b>271,4</b>
24	43 F. MASSEI	ITA	Team Trasimeno	Yamaha YZF R1	<b>1'41.645</b>	2.826	0.299	14	151,055	<b>271,4</b>
25	14 M. MAZZINA	ITA	PATA Yamaha Official Stock Team	Yamaha YZF R1	<b>1'41.677</b>	2.858	0.032	12	151,008	<b>277,0</b>
26	93 R. MERCANDELLI	ITA	Pedercini Racing Kawasaki	Kawasaki ZX-10R	<b>1'41.929</b>	3.110	0.252	12	150,634	<b>275,5</b>
27	19 J. PUFFE	GER	Agro On-Benjan-Kawasaki	Kawasaki ZX-10R	<b>1'41.979</b>	3.160	0.050	13	150,560	<b>272,1</b>
28	9 T. FINSTERBUSCH	GER	BCC-Racing Team	Kawasaki ZX-10R	<b>1'42.323</b>	3.504	0.344	11	150,054	<b>274,1</b>
29	91 L. OPPEDISANO	ITA	Saviofficina Racingteam	Kawasaki ZX-10R	<b>1'42.702</b>	3.883	0.379	13	149,500	<b>271,4</b>
30	92 B. LEU	SUI	Team Trasimeno	Yamaha YZF R1	<b>1'43.124</b>	4.305	0.422	12	148,889	<b>270,0</b>
31	99 F. CAVALLI	ITA	PUNTO MOTO Corse by Clasitaly	Kawasaki ZX-10R	<b>1'44.097</b>	5.278	0.973	13	147,497	<b>269,3</b>
32	13 F. SANCHIONI	ITA	PUNTO MOTO Corse by Clasitaly	Kawasaki ZX-10R	<b>1'47.234</b>	8.415	3.137	1	143,182	<b>268,7</b>

AIR	Humidity:	67%	Temp:	21°C
TRACK	Condition:	Dry	Temp:	28°C

Lap Record:	2016 M.Rinaldi	1'38.865	155,300	Km/h
Best Lap:	2005 K.Sofuoglu	1'42.612	149,630	Km/h

These data/results cannot be reproduced, stored and/or transmitted in whole or in part by any manner of electronic, mechanical, photocopying, recording, broadcasting or otherwise now known or herein after developed without the previous express consent by the copyright owner, except for reproduction in daily press and regular printed publications on sale to the public within 60 days of the event related to those data/results and always provided that copyright symbol appears together as follows below.

© DORNA WSBK ORGANIZATION Srl 2016

Start	End	The results are provisional until the end of the time limit for protests and appeals
17/09/2016	14:15	and the completion of the technical checks.
	14:47	

FIGR PERUGIA TIMING



Official Tyre Supplier



Official Timekeeper

## German Round, 16-17-18 September 2016

### Superstock 1000 - Results Qualifying

#### Session Highlights

14.15.13		Start
14.17.22	Tucci	Time Deleted - Exit Track Limits Turn 1
14.18.11	Faccani	Time Deleted - Exit Track Limits Turn 1
14.19.01	Tessels	Time Deleted - Exit Track Limits Turn 1
14.19.02	Cavalli	Time Deleted - Exit Track Limits Turn 1
14.20.23	Sanchioni	Technical Problem - Turn 7
14.20.40	Mazzina	Time Deleted - Exit Track Limits Turn 1
14.20.41	Moser	Time Deleted - Exit Track Limits Turn 1
14.21.44	Vionnet	Time Deleted - Exceeding Track Limits - Turn 5
14.22.29	Leu	Time Deleted - Exit Track Limits Turn 1
14.23.12	Rinaldi	Time Deleted - Exit Track Limits Turn 1
14.23.16	Andreozzi	Time Deleted - Exit Track Limits Turn 1
14.24.04	Vionnet	Time Deleted - Exit Track Limits Turn 1
14.26.45	Massei	Time Deleted - Exit Track Limits Turn 1
14.26.54	Tamburini	On the Gravel - Turn 8
14.27.15	Tamburini	Re-joined
14.30.43	Mazzina	Crashed - Turn 6
14.30.49	Mazzina	Re-joined
14.31.31	Cavalli	Time Deleted (1'43.971) - Exceeding Track Limit
14.33.10	Cavalli	Time Deleted (1'43.845) - Exceeding Track Limit
14.34.37	Cavalli	Time Deleted (1'54.786) - Exceeding Track Limit
14.36.08	Cavalli	Time Deleted (2'02.693) - Exceeding Track Limit
14.37.37	Salvadori	Time Deleted - Exit Track Limits Turn 1
14.38.25	Vionnet	Time Deleted - Exit Track Limits Turn 1
14.39.04	D'Annunzio	Time Deleted - Exit Track Limits Turn 1
14.39.12	Andreozzi	Time Deleted - Exit Track Limits Turn 1
14.40.08	Russo	Time Deleted - Exit Track Limits Turn 1
14.41.57	Tucci	Time Deleted - Exit Track Limits Turn 1
14.42.06	Oppedisano	Time Deleted - Exit Track Limits Turn 1
14.42.13	Finsterbusch	Time Deleted - Exit Track Limits Turn 1
14.42.34	Leu	Time Deleted - Exit Track Limits Turn 1
14.42.53	Guarnoni	Time Deleted - Exit Track Limits Turn 1
14.43.32	Andreozzi	Crashed Rider OK - Re Joined - Turn 5
14.43.55	Vionnet	Time Deleted - Exit Track Limits Turn 1
14.47.06		End Of Session

#### Fastest Laps Sequence

No.	Rider	Nat	Team	Bike	Local Time	Time	Gap	Avg
50	B. FONG	USA	Agro On-Benjan-Kawasaki	Kawasaki ZX-10R	14:18'26.967	<b>1'42.400</b>		149,941
84	R. RUSSO	ITA	PATA Yamaha Official Stock Team	Yamaha YZF R1	14:18'41.447	<b>1'41.785</b>	-0.615	150,847
11	J. GUARNONI	FRA	Pedercini Racing Kawasaki	Kawasaki ZX-10R	14:19'27.779	<b>1'41.325</b>	-0.460	151,532
12	M. RINALDI	ITA	Aruba.it Racing - Junior Team	Ducati Panigale R	14:19'30.160	<b>1'40.759</b>	-0.566	152,383
35	R. DE ROSA	ITA	Althea BMW Racing Team	BMW S 1000 RR	14:19'54.405	<b>1'40.518</b>	-0.241	152,749
12	M. RINALDI	ITA	Aruba.it Racing - Junior Team	Ducati Panigale R	14:21'10.080	<b>1'39.920</b>	-0.598	153,663
12	M. RINALDI	ITA	Aruba.it Racing - Junior Team	Ducati Panigale R	14:22'49.864	<b>1'39.784</b>	-0.136	153,872
54	T. RAZGATLIOGLU	TUR	Kawasaki Puccetti Racing	Kawasaki ZX-10R	14:31'03.990	<b>1'39.330</b>	-0.454	154,576
54	T. RAZGATLIOGLU	TUR	Kawasaki Puccetti Racing	Kawasaki ZX-10R	14:32'43.055	<b>1'39.065</b>	-0.265	154,989
54	T. RAZGATLIOGLU	TUR	Kawasaki Puccetti Racing	Kawasaki ZX-10R	14:34'21.970	<b>1'38.915</b>	-0.150	155,224
35	R. DE ROSA	ITA	Althea BMW Racing Team	BMW S 1000 RR	14:46'13.835	<b>1'38.819</b>	-0.096	155,375

These data/results cannot be reproduced, stored and/or transmitted in whole or in part by any manner of electronic, mechanical, photocopying, recording, broadcasting or otherwise now known or herein after developed without the previous express consent by the copyright owner, except for reproduction in daily press and regular printed publications on sale to the public within 60 days of the event related to those data/results and always provided that copyright symbol appears together as follows below.

© DORNA WSBK ORGANIZATION Srl 2016

Start	End	The results are provisional until the end of the time limit for protests and appeals
17/09/2016 14:15	14:47	and the completion of the technical checks.

## German Round, 16-17-18 September 2016

### Superstock 1000 - Best Sector & Speed Qualifying

Lausitzring 4.265 m

#### Best Lap

1	35 R. DE ROSA	BMW S 1000 RR	1'38.819
2	54 T. RAZGATLIOGLU	Kawasaki ZX-10R	1'38.915
3	2 R. TAMBURINI	Aorilia RSV4 RF	1'38.933
4	5 M. FACCANI	Ducati Panigale R	1'38.984
5	12 M. RINALDI	Ducati Panigale R	1'39.089
6	11 J. GUARNONI	Kawasaki ZX-10R	1'39.520
7	36 L. MERCADO	Ducati Panigale R	1'39.680
8	84 R. RUSSO	Yamaha YZF R1	1'39.820
9	121 A. ANDREOZZI	Ducati Panigale R	1'39.912
10	59 A. MANTOVANI	Yamaha YZF R1	1'40.287
11	15 F. SANDI	Yamaha YZF R1	1'40.365
12	123 L. SALVADORI	Yamaha YZF R1	1'40.437
13	3 S. SUCHET	Yamaha YZF R1	1'40.612
14	74 K. CALIA	Aorilia RSV4 RF	1'40.649
15	32 M. MOSER	Ducati Panigale R	1'40.773
16	51 E. VIONNET	BMW S 1000 RR	1'40.857
17	41 F. D'ANNUNZIO	BMW S 1000 RR	1'40.867
18	70 L. VITALI	BMW S 1000 RR	1'40.873
19	77 W. TESSELS	Kawasaki ZX-10R	1'40.885
20	67 B. STARING	Kawasaki ZX-10R	1'40.976
21	50 B. FONG	Kawasaki ZX-10R	1'40.980
22	47 R. HARTOG	Kawasaki ZX-10R	1'41.100
23	44 A. TUCCI	Yamaha YZF R1	1'41.346
24	43 F. MASSEI	Yamaha YZF R1	1'41.645
25	14 M. MAZZINA	Yamaha YZF R1	1'41.677
26	93 R. MERCANDELLI	Kawasaki ZX-10R	1'41.929
27	19 J. PUFFE	Kawasaki ZX-10R	1'41.979
28	9 T. FINSTERBUSCH	Kawasaki ZX-10R	1'42.323
29	91 L. OPPEDISANO	Kawasaki ZX-10R	1'42.702
30	92 B. LEU	Yamaha YZF R1	1'43.124
31	99 F. CAVALLI	Kawasaki ZX-10R	1'44.097
32	13 F. SANCHIONI	Kawasaki ZX-10R	1'47.234

#### Best Sector & Speed

1	35 R. DE ROSA	BMW S 1000 RR	278.4
2	14 M. MAZZINA	Yamaha YZF R1	277.0
3	3 S. SUCHET	Yamaha YZF R1	277.0
4	12 M. RINALDI	Ducati Panigale R	277.0
5	74 K. CALIA	Aorilia RSV4 RF	277.0
6	54 T. RAZGATLIOGLU	Kawasaki ZX-10R	277.0
7	84 R. RUSSO	Yamaha YZF R1	276.2
8	59 A. MANTOVANI	Yamaha YZF R1	276.2
9	2 R. TAMBURINI	Aorilia RSV4 RF	275.5
10	93 R. MERCANDELLI	Kawasaki ZX-10R	275.5
11	5 M. FACCANI	Ducati Panigale R	274.8
12	36 L. MERCADO	Ducati Panigale R	274.1
13	9 T. FINSTERBUSCH	Kawasaki ZX-10R	274.1
14	70 L. VITALI	BMW S 1000 RR	273.4
15	19 J. PUFFE	Kawasaki ZX-10R	272.1
16	47 R. HARTOG	Kawasaki ZX-10R	272.1
17	15 F. SANDI	Yamaha YZF R1	272.1
18	123 L. SALVADORI	Yamaha YZF R1	272.1
19	44 A. TUCCI	Yamaha YZF R1	271.4
20	91 L. OPPEDISANO	Kawasaki ZX-10R	271.4
21	67 B. STARING	Kawasaki ZX-10R	271.4
22	50 B. FONG	Kawasaki ZX-10R	271.4
23	121 A. ANDREOZZI	Ducati Panigale R	271.4
24	77 W. TESSELS	Kawasaki ZX-10R	271.4
25	11 J. GUARNONI	Kawasaki ZX-10R	271.4
26	43 F. MASSEI	Yamaha YZF R1	271.4
27	41 F. D'ANNUNZIO	BMW S 1000 RR	270.7
28	51 E. VIONNET	BMW S 1000 RR	270.0
29	92 B. LEU	Yamaha YZF R1	270.0
30	99 F. CAVALLI	Kawasaki ZX-10R	269.3
31	13 F. SANCHIONI	Kawasaki ZX-10R	268.7
32	32 M. MOSER	Ducati Panigale R	268.0

Seg. 1		Seg. 2		Seg. 3		Seg. 4		Seg. 5		
1	84 R. RUSSO	1.543	12 M. RINALDI	24.788	12 M. RINALDI	30.591	35 R. DE ROSA	22.320	54 T. RAZGATLIOGLU	19.146
2	35 R. DE ROSA	1.545	84 R. RUSSO	24.847	2 R. TAMBURINI	30.594	54 T. RAZGATLIOGLU	22.428	2 R. TAMBURINI	19.218
3	2 R. TAMBURINI	1.545	36 L. MERCADO	24.855	35 R. DE ROSA	30.610	2 R. TAMBURINI	22.469	5 M. FACCANI	19.230
4	59 A. MANTOVANI	1.546	5 M. FACCANI	24.858	54 T. RAZGATLIOGLU	30.709	12 M. RINALDI	22.492	35 R. DE ROSA	19.278
5	14 M. MAZZINA	1.548	54 T. RAZGATLIOGLU	24.877	5 M. FACCANI	30.717	11 J. GUARNONI	22.503	11 J. GUARNONI	19.358
6	3 S. SUCHET	1.549	6 35 R. DE ROSA	24.897	6 11 J. GUARNONI	30.887	6 5 M. FACCANI	22.604	6 84 R. RUSSO	19.375
7	12 M. RINALDI	1.550	2 R. TAMBURINI	24.922	36 L. MERCADO	30.915	59 A. MANTOVANI	22.619	121 A. ANDREOZZI	19.452
8	74 K. CALIA	1.550	121 A. ANDREOZZI	25.032	121 A. ANDREOZZI	31.009	36 L. MERCADO	22.623	36 L. MERCADO	19.468
9	54 T. RAZGATLIOGLU	1.552	11 J. GUARNONI	25.083	41 F. D'ANNUNZIO	31.093	123 L. SALVADORI	22.631	12 M. RINALDI	19.470
10	36 L. MERCADO	1.559	123 L. SALVADORI	25.198	84 R. RUSSO	31.116	15 F. SANDI	22.664	15 F. SANDI	19.473
11	93 R. MERCANDELLI	1.560	59 A. MANTOVANI	25.277	3 S. SUCHET	31.135	77 W. TESSELS	22.702	67 B. STARING	19.515
12	5 M. FACCANI	1.565	15 F. SANDI	25.308	15 F. SANDI	31.135	84 R. RUSSO	22.715	59 A. MANTOVANI	19.542
13	44 A. TUCCI	1.568	44 A. TUCCI	25.321	70 L. VITALI	31.168	3 S. SUCHET	22.734	32 M. MOSER	19.554
14	9 T. FINSTERBUSCH	1.568	32 M. MOSER	25.325	74 K. CALIA	31.177	121 A. ANDREOZZI	22.751	74 K. CALIA	19.567
15	19 J. PUFFE	1.568	74 K. CALIA	25.349	47 R. HARTOG	31.182	70 L. VITALI	22.778	3 S. SUCHET	19.569
16	67 B. STARING	1.569	67 B. STARING	25.376	59 A. MANTOVANI	31.188	74 K. CALIA	22.800	41 F. D'ANNUNZIO	19.602
17	51 E. VIONNET	1.570	77 W. TESSELS	25.388	51 E. VIONNET	31.256	50 B. FONG	22.814	19 J. PUFFE	19.617
18	11 J. GUARNONI	1.570	51 E. VIONNET	25.408	123 L. SALVADORI	31.288	51 E. VIONNET	22.818	50 B. FONG	19.638
19	70 L. VITALI	1.571	43 F. MASSEI	25.411	77 W. TESSELS	31.318	32 M. MOSER	22.842	70 L. VITALI	19.686
20	50 B. FONG	1.573	3 S. SUCHET	25.435	50 B. FONG	31.403	41 F. D'ANNUNZIO	22.870	123 L. SALVADORI	19.701
21	15 F. SANDI	1.574	41 F. D'ANNUNZIO	25.461	32 M. MOSER	31.440	14 M. MAZZINA	22.889	77 W. TESSELS	19.716
22	77 W. TESSELS	1.575	70 L. VITALI	25.462	93 R. MERCANDELLI	31.469	67 B. STARING	22.898	51 E. VIONNET	19.723
23	92 B. LEU	1.575	50 B. FONG	25.467	67 B. STARING	31.514	47 R. HARTOG	22.919	43 F. MASSEI	19.743
24	91 L. OPPEDISANO	1.576	14 M. MAZZINA	25.484	14 M. MAZZINA	31.534	44 A. TUCCI	22.985	47 R. HARTOG	19.755
25	121 A. ANDREOZZI	1.578	47 R. HARTOG	25.488	43 F. MASSEI	31.586	19 J. PUFFE	23.039	93 R. MERCANDELLI	19.771
26	123 L. SALVADORI	1.579	19 J. PUFFE	25.769	44 A. TUCCI	31.612	93 R. MERCANDELLI	23.124	44 A. TUCCI	19.774
27	47 R. HARTOG	1.581	9 T. FINSTERBUSCH	25.822	91 L. OPPEDISANO	31.728	43 F. MASSEI	23.133	9 T. FINSTERBUSCH	19.851
28	43 F. MASSEI	1.583	91 L. OPPEDISANO	25.873	9 T. FINSTERBUSCH	31.788	92 B. LEU	23.182	14 M. MAZZINA	19.880
29	41 F. D'ANNUNZIO	1.583	93 R. MERCANDELLI	25.919	19 J. PUFFE	31.843	9 T. FINSTERBUSCH	23.263	91 L. OPPEDISANO	19.896
30	99 F. CAVALLI	1.594	92 B. LEU	26.083	92 B. LEU	31.926	91 L. OPPEDISANO	23.337	92 B. LEU	20.021
31	13 F. SANCHIONI	1.597	13 F. SANCHIONI	26.163	99 F. CAVALLI	32.211	13 F. SANCHIONI	23.371	99 F. CAVALLI	20.146
32	32 M. MOSER	1.599	99 F. CAVALLI	26.339	13 F. SANCHIONI	33.930	99 F. CAVALLI	23.578	13 F. SANCHIONI	20.319

17/09/2016

These data/results cannot be reproduced, stored and/or transmitted in whole or in part by any manner of electronic, mechanical, photocopying, recording, broadcasting or otherwise now known or herein after developed without the previous express consent by the copyright owner, except for reproduction in daily press and regular printed publications on sale to the public within 60 days of the event related to those data/results and always provided that copyright symbol appears together as follows below.

© DORNA WSBK ORGANIZATION Srl 2016

FICR PERUGIA TIMING



Official Tyre Supplier



Official Timekeeper



Lausitzring 4.265 m

1 / 2

## German Round, 16-17-18 September 2016

### Superstock 1000 - Ideal Times Qualifying

No. Rider	Nat	Bike	Seg. 1 Diff. 1	Seg. 2 Diff. 2	Seg. 3 Diff. 3	Seg. 4 Diff. 4	Seg. 5 Diff. 5	Ideal Time Best Lap	Pos.	Diff.
1 35 R. DE ROSA	ITA	BMW S 1000 RR	1.545 0.001	24.897 0.042	30.610	<b>22.320</b>	19.278 0.126	<b>1'38.650</b> 1'38.819	1	0.169
2 54 T. RAZGATLIOGLU	TUR	Kawasaki ZX-10R	1.552 0.009	24.877	30.709 0.194	22.428	<b>19.146</b>	<b>1'38.712</b> 1'38.915	2	0.203
3 2 R. TAMBURINI	ITA	Aprilia RSV4 RF	1.545 0.014	24.922 0.111	30.594	22.469	19.218 0.060	<b>1'38.748</b> 1'38.933	3	0.185
4 12 M. RINALDI	ITA	Ducati Panigale R	1.550 0.015	<b>24.788</b> 0.157	<b>30.591</b>	22.492 0.026	19.470	<b>1'38.891</b> 1'39.089	5	0.198
5 5 M. FACCANI	ITA	Ducati Panigale R	1.565 0.010	24.858	30.717	22.604	19.230	<b>1'38.974</b> 1'38.984	4	0.010
6 11 J. GUARNONI	FRA	Kawasaki ZX-10R	1.570 0.006	25.083	30.887	22.503 0.102	19.358 0.011	<b>1'39.401</b> 1'39.520	6	0.119
7 36 L. MERCADO	ARG	Ducati Panigale R	1.559 0.005	24.855 0.078	30.915	22.623 0.177	19.468	<b>1'39.420</b> 1'39.680	7	0.260
8 84 R. RUSSO	ITA	Yamaha YZF R1	<b>1.543</b> 0.007	24.847	31.116	22.715 0.217	19.375	<b>1'39.596</b> 1'39.820	8	0.224
9 121 A. ANDREOZZI	ITA	Ducati Panigale R	1.578 0.029	25.032 0.050	31.009 0.011	22.751	19.452	<b>1'39.822</b> 1'39.912	9	0.090
10 15 F. SANDI	ITA	Yamaha YZF R1	1.574 0.008	25.308	31.135 0.113	22.664	19.473 0.090	<b>1'40.154</b> 1'40.365	11	0.211
11 59 A. MANTOVANI	ITA	Yamaha YZF R1	1.546 0.049	25.277	31.188 0.018	22.619 0.033	19.542 0.015	<b>1'40.172</b> 1'40.287	10	0.115
12 123 L. SALVADORI	ITA	Yamaha YZF R1	1.579 0.013	25.198	31.288 0.027	22.631	19.701	<b>1'40.397</b> 1'40.437	12	0.040
13 3 S. SUCHET	SUI	Yamaha YZF R1	1.549 0.025	25.435 0.022	31.135 0.143	22.734	19.569	<b>1'40.422</b> 1'40.612	13	0.190
14 74 K. CALIA	ITA	Aprilia RSV4 RF	1.550 0.015	25.349	31.177 0.020	22.800 0.159	19.567 0.012	<b>1'40.443</b> 1'40.649	14	0.206
15 41 F. D'ANNUNZIO	ITA	BMW S 1000 RR	1.583 0.018	25.461	31.093	22.870 0.240	19.602	<b>1'40.609</b> 1'40.867	17	0.258
16 70 L. VITALI	ITA	BMW S 1000 RR	1.571 0.001	25.462 0.033	31.168 0.064	22.778 0.054	19.686 0.056	<b>1'40.665</b> 1'40.873	18	0.208
17 77 W. TESSELS	NED	Kawasaki ZX-10R	1.575 0.014	25.388 0.064	31.318 0.108	22.702	19.716	<b>1'40.699</b> 1'40.885	19	0.186
18 32 M. MOSER	GER	Ducati Panigale R	1.599 0.013	25.325	31.440	22.842	19.554	<b>1'40.760</b> 1'40.773	15	0.013
19 51 E. VIONNET	SUI	BMW S 1000 RR	1.570 0.016	25.408	31.256	22.818	19.723 0.066	<b>1'40.775</b> 1'40.857	16	0.082
20 67 B. STARING	AUS	Kawasaki ZX-10R	1.569 0.020	25.376 0.022	31.514 0.035	22.898 0.027	19.515	<b>1'40.872</b> 1'40.976	20	0.104
21 50 B. FONG	USA	Kawasaki ZX-10R	1.573 0.010	25.467	31.403 0.063	22.814 0.012	19.638	<b>1'40.895</b> 1'40.980	21	0.085
22 47 R. HARTOG	NED	Kawasaki ZX-10R	1.581 0.010	25.488 0.072	31.182 0.093	22.919	19.755	<b>1'40.925</b> 1'41.100	22	0.175
23 44 A. TUCCI	ITA	Yamaha YZF R1	1.568 0.018	25.321	31.612	22.985 0.068	19.774	<b>1'41.260</b> 1'41.346	23	0.086
24 14 M. MAZZINA	ITA	Yamaha YZF R1	1.548 0.020	25.484	31.534 0.193	22.889 0.093	19.880 0.036	<b>1'41.335</b> 1'41.677	25	0.342
25 43 F. MASSEI	ITA	Yamaha YZF R1	1.583	25.411	31.586	23.133 0.189	19.743	<b>1'41.456</b> 1'41.645	24	0.189
26 19 J. PUFFE	GER	Kawasaki ZX-10R	1.568 0.016	25.769 0.048	31.843	23.039 0.079	19.617	<b>1'41.836</b> 1'41.979	27	0.143
27 93 R. MERCANDELLI	ITA	Kawasaki ZX-10R	1.560 0.014	25.991	31.469	23.124	19.771	<b>1'41.915</b> 1'41.929	26	0.014
28 9 T. FINSTERBUSCH	GER	Kawasaki ZX-10R	1.568 0.007	25.822	31.788	23.263	19.851 0.024	<b>1'42.292</b> 1'42.323	28	0.031
29 91 L. OPPEDISANO	ITA	Kawasaki ZX-10R	1.576	25.873 0.123	31.728 0.074	23.337	19.896 0.095	<b>1'42.410</b> 1'42.702	29	0.292
30 92 B. LEU	SUI	Yamaha YZF R1	1.575 0.020	26.083 0.017	31.926	23.182 0.284	20.021 0.016	<b>1'42.787</b> 1'43.124	30	0.337
31 99 F. CAVALLI	ITA	Kawasaki ZX-10R	1.594 0.016	26.339 0.123	32.211 0.010	23.578 0.080	20.146	<b>1'43.868</b> 1'44.097	31	0.229

17/09/2016

These data/results cannot be reproduced, stored and/or transmitted in whole or in part by any manner of electronic, mechanical, photocopying, recording, broadcasting or otherwise now known or herein after developed without the previous express consent by the copyright owner, except for reproduction in daily press and regular printed publications on sale to the public within 60 days of the event related to those data/results and always provided that copyright symbol appears together as follows below.

© DORNA WSBK ORGANIZATION Srl 2016

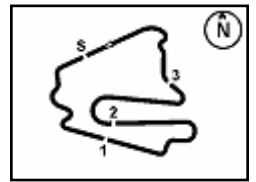
FICR PERUGIA TIMING



Official Tyre Supplier



Official Timekeeper



Lausitzring 4.265 m

2 / 2

## German Round, 16-17-18 September 2016

### Superstock 1000 - Ideal Times Qualifying

No.	Rider	Nat	Bike	Seg. 1	Seg. 2	Seg. 3	Seg. 4	Seg. 5	Ideal Time			
				Diff. 1	Diff. 2	Diff. 3	Diff. 4	Diff. 5	Best Lap	Pos.	Diff.	
32	13 F. SANCHIONI	ITA	Kawasaki ZX-10R	1.597 0.016	26.163 0.494	33.930 1.344	23.371	20.319	<b>1'45.380</b>	1'47.234	32	1.854
<b>Overall Ideal Time</b>				1.543	24.788	30.591	22.320	19.146	<b>1'38.388</b>			

17/09/2016

These data/results cannot be reproduced, stored and/or transmitted in whole or in part by any manner of electronic, mechanical, photocopying, recording, broadcasting or otherwise now known or herein after developed without the previous express consent by the copyright owner, except for reproduction in daily press and regular printed publications on sale to the public within 60 days of the event related to those data/results and always provided that copyright symbol appears together as follows below.  
 © DORNA WSBK ORGANIZATION Srl 2016

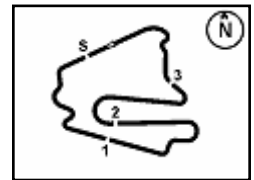












## German Round, 16-17-18 September 2016

### Superstock 1000 - Chronological Analysis Qualifying

7	1.593	26.946	33.869	24.720	20.000	1'47.128	269.3	14:34'35.293
8	1.591	<b>25.873</b>	<b>31.728</b>	23.647	20.178	1'43.017	270.0	14:36'18.310
9	1.598	25.973	31.788	23.407	20.012	1'42.778	268.7	14:38'01.088
10	1.609	29.528	37.877	25.402	20.173	1'54.589	267.3	14:39'55.677
11	1.599	27.749	34.397	23.776	20.039	1'47.560	268.7	14:41'43.237
12	1.603	36.098	33.124	23.449	19.931	1'54.205 C	268.0	14:43'37.442
13	<b>1.576</b>	25.996	31.802	<b>23.337</b>	19.991	<b>1'42.702</b>	<b>271.4</b>	14:45'20.144

#### 30° 92 B. LEU (1'43.124)

Lap	Seg. 1	Seg. 2	Seg. 3	Seg. 4	Seg. 5	Lap Time	km/h	Local Time
1			33.146	24.378	20.327			14:16'53.181
2	1.579	27.006	32.452	23.364	20.230	1'44.631	269.3	14:18'37.812
3	<b>1.575</b>	26.517	32.076	<b>23.182</b>	21.018	1'44.368	268.0	14:20'22.180
4	1.649	26.336	32.417	23.438	20.106	1'43.946	261.5	14:22'06.126
5	1.594	41.193	37.572	23.890	33.721	2'17.970 C	269.3	14:24'24.096
6			38.075	23.405	20.033	8'57.264 P		14:33'21.360
7	1.593	26.155	32.035	23.619	20.085	1'43.487	<b>270.0</b>	14:35'04.847
8	1.600	29.166	32.114	23.523	21.199	1'47.602	268.0	14:36'52.449
9	1.606	26.138	31.970	23.388	20.065	1'43.167	266.7	14:38'35.616
10	1.606	29.338	35.412	24.165	21.648	1'52.169	266.0	14:40'27.785
11	1.593	<b>26.083</b>	32.120	23.364	<b>20.021</b>	1'43.181	269.3	14:42'10.966
12	1.599	40.855	39.303	23.616	20.442	2'05.815 C	268.0	14:44'16.781
13	1.595	26.100	<b>31.926</b>	23.466	20.037	<b>1'43.124</b>	268.7	14:45'59.905

#### 31° 99 F. CAVALLI (1'44.097)

Lap	Seg. 1	Seg. 2	Seg. 3	Seg. 4	Seg. 5	Lap Time	km/h	Local Time
1			33.818	24.371	20.631			14:16'50.518
2	1.603	27.365	32.778	23.960	20.420	1'46.126	267.3	14:18'36.644
3	<b>1.594</b>	42.074	34.523	24.919	20.954	2'04.064 C	<b>269.3</b>	14:20'40.708
4	1.605	26.813	33.080	23.632	30.299	1'55.429 P	265.3	14:22'36.137
5			34.809	25.502	20.845	5'51.688 P		14:28'27.825
6	1.615	<b>26.339</b>	32.379	23.384	20.254	1'43.971 C	266.0	14:30'11.796
7	1.625	26.414	32.327	23.441	20.038	1'43.845 C	264.0	14:31'55.641
8	1.617	29.331	39.056	24.409	20.373	1'54.786 C	265.3	14:33'50.427
9	1.609	26.534	32.289	28.107	34.154	2'02.693 C	266.7	14:35'53.120
10	1.637	26.449	36.483	24.981	25.352	1'54.902	262.7	14:37'48.022
11	1.610	26.462	32.221	23.658	<b>20.146</b>	<b>1'44.097</b>	266.7	14:39'32.119
12	1.613	28.512	37.223	30.454	32.633	2'10.435	266.0	14:41'42.554
13	1.617	26.621	32.225	27.948	25.982	1'54.393	264.0	14:43'36.947
14	1.608	27.096	<b>32.211</b>	<b>23.578</b>	20.194	1'44.687	266.0	14:45'21.634

#### 32° 13 F. SANCHIONI (1'47.234)

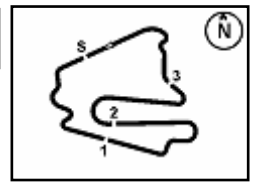
Lap	Seg. 1	Seg. 2	Seg. 3	Seg. 4	Seg. 5	Lap Time	km/h	Local Time
1			33.930	24.020	20.815			14:16'51.375
2	1.613	26.657	35.274	<b>23.371</b>	<b>20.319</b>	<b>1'47.234</b>	266.0	14:18'38.609

P = Pits In/Out - C = Lap-Time Cancelled

These data/results cannot be reproduced, stored and/or transmitted in whole or in part by any manner of electronic, mechanical, photocopying, recording, broadcasting or otherwise now known or herein after developed without the previous express consent by the copyright owner, except for reproduction in daily press and regular printed publications on sale to the public within 60 days of the event related to those data/results and always provided that copyright symbol appears together as follows below.

© DORNA WSBK ORGANIZATION Srl 2016





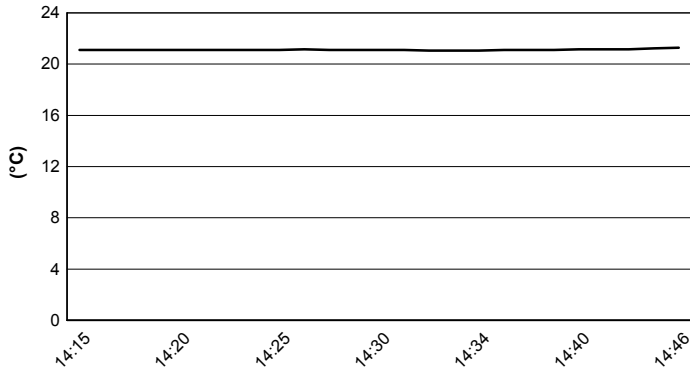
Lausitzring 4.265 m

## German Round, 16-17-18 September 2016

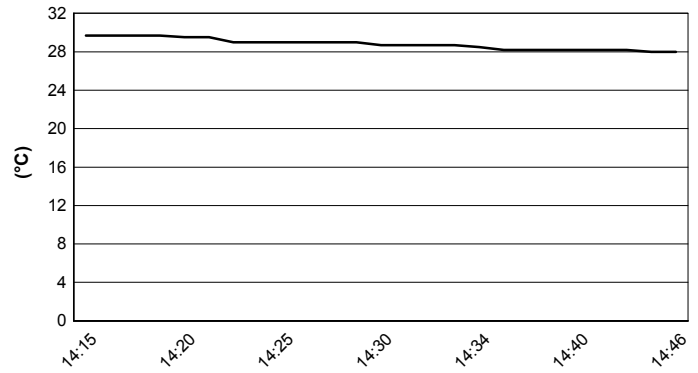
### Superstock 1000 - Weather Report Qualifying

Session started 14:15      Session ended 14:47

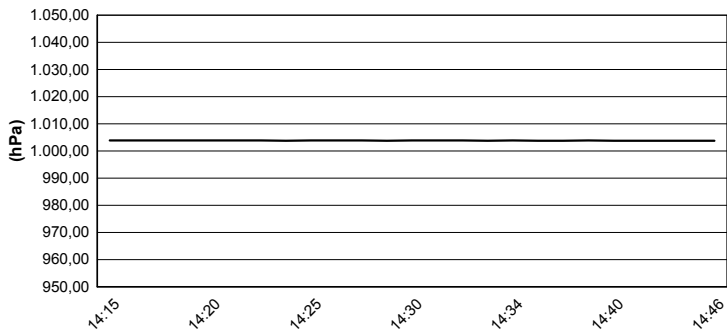
### Air Temperature



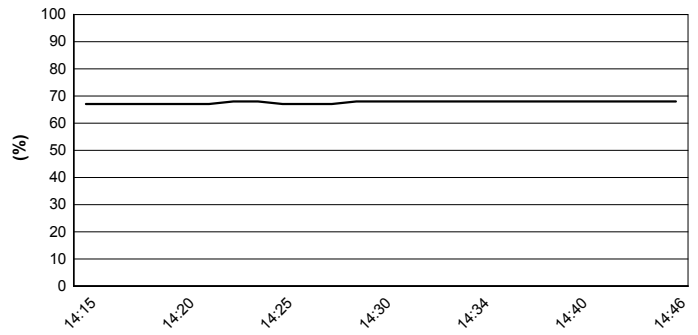
### Track Temperature



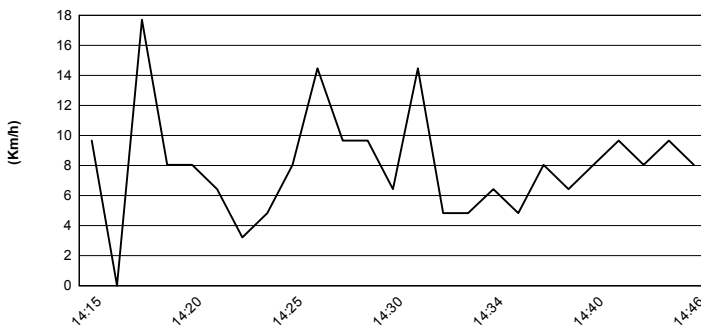
### Air Pressure



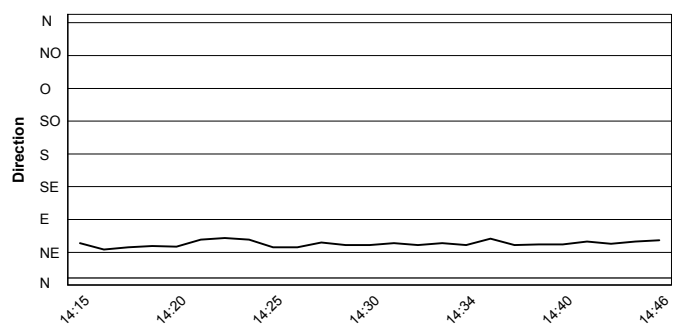
### Humidity



### Wind Speed



### Wind Direction



These data/results cannot be reproduced, stored and/or transmitted in whole or in part by any manner of electronic, mechanical, photocopying, recording, broadcasting or otherwise now known or herein after developed without the previous express consent by the copyright owner, except for reproduction in daily press and regular printed publications on sale to the public within 60 days of the event related to those data/results and always provided that copyright symbol appears together as follows below.  
 © DORNA WSBK ORGANIZATION Srl 2016





Lausitzring 4.265 m

## German Round, 16-17-18 September 2016

### Superstock 1000 - Provisional Starting Grid

14 Laps x 4,265 km = 59,710 km

				1		
				2		
		3		4		1
		5		6		
		6		7		2
		9		8		3
		12		10		4
		15		11		5
		18		14		6
		21		17		7
		24		20		8
		27		23		9
		30		26		10
		32		29		11
		35		32		

N. 35 (De Rosa R.) has been penalized to drop 3 grid positions  
N. 70 (Vitali L.) will start from the pit lane

Jury President .....

..... Race Director

These data/results cannot be reproduced, stored and/or transmitted in whole or in part by any manner of electronic, mechanical, photocopying, recording, broadcasting or otherwise now known or herein after developed without the previous express consent by the copyright owner, except for reproduction in daily press and regular printed publications on sale to the public within 60 days of the event related to those data/results and always provided that copyright symbol appears together as follows below.

© DORNA WSBK ORGANIZATION Srl 2016

FICR PERUGIA TIMING



Official Tyre Supplier



Official Timekeeper



Lausitzring 4.265 m

## German Round, 16-17-18 September 2016

### Superstock 1000 - Pole Ranking

	2013	2014	2015	2016
<b>01 Aragon</b>	Barrier (Fra) Bmw 2'01.347 (158,5 Km/h)	Mercado (Arg) Duc 2'01.610 (158,2 Km/h)	Savadori (Ita) Apr 1'52.577 (162,4 Km/h)	Marino (Fra) Yam 1'52.773 (162,1 Km/h)
<b>02 Assen</b>	La Marra (Ita) Duc 1'38.571 (165,9 Km/h)	Savadori (Ita) Kaw 1'38.252 (166,4 Km/h)	Savadori (Ita) Apr 1'36.998 (168,6 Km/h)	Russo (Ita) Yam 1'38.248 (166,4 Km/h)
<b>03 Imola</b>	Barrier (Fra) Bmw 1'49.900 (161,7 Km/h)	Massei (Ita) Duc 1'50.351 (161,0 Km/h)	Jezek (Cze) Duc 1'49.071 (162,9 Km/h)	Tamburini (Ita) Apr 1'49.672 (162,0 Km/h)
<b>04 Donington</b>			Tamburini (Ita) Bmw 1'29.449 (161,9 Km/h)	De Rosa (Ita) Bmw 1'29.515 (161,8 Km/h)
<b>05 Misano Adriatico</b>		Savadori (Ita) Kaw 1'38.974 (153,7 Km/h)	Savadori (Ita) Apr 1'36.384 (157,8 Km/h)	Faccani (Ita) Duc 1'37.321 (156,3 Km/h)
<b>06 Lausitz</b>				De Rosa (Ita) Bmw 1'38.819 (155,4 Km/h)
<b>07 Magny-Cours</b>	Guarnoni (Fra) Kaw 1'41.523 (156,4 Km/h)	Savadori (Ita) Kaw 1'40.781 (157,6 Km/h)	Guarnoni (Fra) Yam 1'57.937 (134,6 Km/h)	
<b>08 Jerez</b>	Guarnoni (Fra) Kaw 1'45.062 (151,6 Km/h)	Mercado (Arg) Duc 1'45.018 (151,6 Km/h)	Tamburini (Ita) Bmw 1'44.188 (152,8 Km/h)	

### 2016

- 2 R. De Rosa
- 1 M. Faccani
- 1 R. Russo
- 1 F. Marino
- 1 R. Tamburini

### ALL TIMES

- |                    |                |                |              |
|--------------------|----------------|----------------|--------------|
| 14 S. Barrier      | 4 R. Tamburini | 1 D. Jefferies | 1 F. Marino  |
| 13 A. Badovini     | 3 C. Burns     | 1 F. Foret     | 1 R. Russo   |
| 7 W. Tortoroglio   | 3 M. Fabrizio  | 1 J. Morley    | 1 M. Faccani |
| 7 V. Iannuzzo      | 3 E. La Marra  | 1 G. Mason     |              |
| 7 C. Corti         | 3 J. Guarnoni  | 1 C. Vermeulen |              |
| 7 L. Savadori      | 2 S. Nebel     | 1 M. Nutt      |              |
| 6 X. Simeon        | 2 J. Ellison   | 1 R. Chiarello |              |
| 6 D. Petrucci      | 2 F. Capriotti | 1 I. Sala      |              |
| 5 G. Vizziello     | 2 L. Alfonsi   | 1 M. Bauer     |              |
| 5 M. Berger        | 2 D. Oliver    | 1 B. Veneman   |              |
| 4 K. Harris        | 2 A. Polita    | 1 M. Smrz      |              |
| 4 D. Van Keymeulen | 2 I. Dionisi   | 1 M. Baiocco   |              |
| 4 K. Sofuoglu      | 2 L. Lanzi     | 1 I. Silva     |              |
| 4 N. Canepa        | 2 L. Scassa    | 1 O. Jezek     |              |
| 4 D. Giugliano     | 2 M. Roccoli   | 1 L. Baz       |              |
| 4 B. Roberts       | 2 L. Mercado   | 1 B. Staring   |              |
| 4 M. Pirro         | 2 R. De Rosa   | 1 F. Massei    |              |

These data/results cannot be reproduced, stored and/or transmitted in whole or in part by any manner of electronic, mechanical, photocopying, recording, broadcasting or otherwise now known or herein after developed without the previous express consent by the copyright owner, except for reproduction in daily press and regular printed publications on sale to the public within 60 days of the event related to those data/results and always provided that copyright symbol appears together as follows below.

© DORNA WSBK ORGANIZATION Srl 2016