

Lausitzring 4.265 m

1 / 2

German Round, 16-17-18 September 2016

Superstock 1000 - Results Warm Up

No.	Rider	Nat	Team	Bike	Time	Gap	Rel.	Laps	Speed	
									Avg	Max
1	54 T. RAZGATLIOGLU	TUR	Kawasaki Puccetti Racing	Kawasaki ZX-10R	1'39.556			8	154,225	282,8
2	35 R. DE ROSA	ITA	Althea BMW Racing Team	BMW S 1000 RR	1'39.572	0.016	0.016	8	154,200	282,0
3	2 R. TAMBURINI	ITA	Nuova M2 Racing	Aprilia RSV4 RF	1'40.051	0.495	0.479	7	153,462	274,8
4	36 L. MERCADO	ARG	Aruba.it Racing - Junior Team	Ducati Panigale R	1'40.222	0.666	0.171	8	153,200	275,5
5	5 M. FACCANI	ITA	Triple-M Racing	Ducati Panigale R	1'40.292	0.736	0.070	8	153,093	
6	11 J. GUARNONI	FRA	Pedercini Racing Kawasaki	Kawasaki ZX-10R	1'40.576	1.020	0.284	8	152,661	274,1
7	121 A. ANDREOZZI	ITA	SK-Racing Team by Barni	Ducati Panigale R	1'40.655	1.099	0.079	8	152,541	275,5
8	12 M. RINALDI	ITA	Aruba.it Racing - Junior Team	Ducati Panigale R	1'40.684	1.128	0.029	7	152,497	277,0
9	43 F. MASSEI	ITA	Team Trasimeno	Yamaha YZF R1	1'40.930	1.374	0.246	8	152,125	274,1
10	84 R. RUSSO	ITA	PATA Yamaha Official Stock Team	Yamaha YZF R1	1'40.938	1.382	0.008	7	152,113	278,4
11	59 A. MANTOVANI	ITA	Guandalini Racing Yamaha	Yamaha YZF R1	1'41.212	1.656	0.274	8	151,701	274,8
12	41 F. D'ANNUNZIO	ITA	FDA Racing Team	BMW S 1000 RR	1'41.258	1.702	0.046	8	151,632	272,7
13	3 S. SUCHET	SUI	Berclaz Racing by MotoXracing	Yamaha YZF R1	1'41.364	1.808	0.106	8	151,474	279,1
14	74 K. CALIA	ITA	Nuova M2 Racing	Aprilia RSV4 RF	1'41.379	1.823	0.015	8	151,451	277,0
15	47 R. HARTOG	NED	Team Hartog - Jenik - Against Cancer	Kawasaki ZX-10R	1'41.680	2.124	0.301	8	151,003	274,8
16	50 B. FONG	USA	Agro On-Benjan-Kawasaki	Kawasaki ZX-10R	1'41.705	2.149	0.025	8	150,966	272,7
17	123 L. SALVADORI	ITA	Team Motozoo by MotoXracing	Yamaha YZF R1	1'41.710	2.154	0.005	8	150,959	276,2
18	44 A. TUCCI	ITA	Berclaz Racing by MotoXracing	Yamaha YZF R1	1'41.925	2.369	0.215	8	150,640	272,1
19	51 E. VIONNET	SUI	Motos Vionnet	BMW S 1000 RR	1'41.990	2.434	0.065	8	150,544	269,3
20	67 B. STARING	AUS	Agro On-Benjan-Kawasaki	Kawasaki ZX-10R	1'42.040	2.484	0.050	8	150,470	275,5
21	77 W. TESSELS	NED	MTM / HS Kawasaki	Kawasaki ZX-10R	1'42.069	2.513	0.029	8	150,428	273,4
22	15 F. SANDI	ITA	Berclaz Racing by MotoXracing	Yamaha YZF R1	1'42.209	2.653	0.140	2	150,222	273,4
23	19 J. PUFFE	GER	Agro On-Benjan-Kawasaki	Kawasaki ZX-10R	1'42.242	2.686	0.033	8	150,173	273,4
24	93 R. MERCANDELLI	ITA	Pedercini Racing Kawasaki	Kawasaki ZX-10R	1'42.602	3.046	0.360	8	149,646	279,1
25	9 T. FINSTERBUSCH	GER	BCC-Racing Team	Kawasaki ZX-10R	1'42.683	3.127	0.081	8	149,528	274,1
26	32 M. MOSER	GER	Triple-M Racing	Ducati Panigale R	1'43.291	3.735	0.608	7	148,648	264,7
27	92 B. LEU	SUI	Team Trasimeno	Yamaha YZF R1	1'43.483	3.927	0.192	8	148,372	274,1
28	14 M. MAZZINA	ITA	PATA Yamaha Official Stock Team	Yamaha YZF R1	1'43.592	4.036	0.109	8	148,216	274,8
29	13 F. SANCHIONI	ITA	PUNTO MOTO Corse by Clasitaly	Kawasaki ZX-10R	1'43.927	4.371	0.335	6	147,738	270,0
30	91 L. OPPEDISANO	ITA	Saviofficina Racingteam	Kawasaki ZX-10R	1'44.024	4.468	0.097	6	147,601	
31	99 F. CAVALLI	ITA	PUNTO MOTO Corse by Clasitaly	Kawasaki ZX-10R	1'44.899	5.343	0.875	8	146,369	268,7
32	70 L. VITALI	ITA	Team 2R Racing	BMW S 1000 RR				1		

AIR	Humidity:	78%	Temp:	13°C
TRACK	Condition:	Dry	Temp:	18°C

Lap Record:	2016 R.De Rosa	1'38.819	155,370	Km/h
Best Lap:	2005 K.Sofuoglu	1'42.612	149,630	Km/h

These data/results cannot be reproduced, stored and/or transmitted in whole or in part by any manner of electronic, mechanical, photocopying, recording, broadcasting or otherwise now known or herein after developed without the previous express consent by the copyright owner, except for reproduction in daily press and regular printed publications on sale to the public within 60 days of the event related to those data/results and always provided that copyright symbol appears together as follows below.

© DORNA WSBK ORGANIZATION Srl 2016

Start	End	The results are provisional until the end of the time limit for protests and appeals
18/09/2016 09:50	10:06	and the completion of the technical checks.

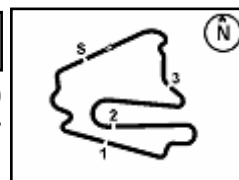
FIGR PERUGIA TIMING



Official Tyre Supplier



Official Timekeeper



German Round, 16-17-18 September 2016

Superstock 1000 - Results Warm Up

Session Highlights

09.50.00		Start
09.52.48	Vitali	Technical Problem - Turn 6
09.53.10	Vitali	Re-joined
09.53.20	Oppedisano	Check Transponder
09.53.21	Faccani	Check Transponder
09.53.59	Leu	Time Deleted - Exit Track Limits Turn 1
09.54.51	Oppedisano	Check Transponder
09.55.37	Russo	Time Deleted - Exit Track Limits Turn 1
09.56.47	Sandi	Crashed - Turn 8
09.59.18	Massei	Time Deleted - Exit Track Limits Turn 1
09.59.19	Sanchioni	Time Deleted - Exit Track Limits Turn 1
10.02.35	Vionnet	Time Deleted - Exit Track Limits Turn 1
10.02.46	Staring	Time Deleted - Exit Track Limits Turn 1
10.04.02	Vitali	Technical Problem - Turn 6
10.06.01		End Of Session

Fastest Laps Sequence

No.	Rider	Nat	Team	Bike	Local Time	Time	Gap	Avg
91	L. OPPEDISANO	ITA	Saviofficina Racingteam	Kawasaki ZX-10R	09:52'00.186	2'06.414		121,458
84	R. RUSSO	ITA	PATA Yamaha Official Stock Team	Yamaha YZF R1	09:53'32.178	1'41.675	-24.739	151,011
35	R. DE ROSA	ITA	Althea BMW Racing Team	BMW S 1000 RR	09:54'34.778	1'40.425	-1.250	152,890
5	M. FACCANI	ITA	Triple-M Racing	Ducati Panigale R	09:55'29.244	1'40.292	-0.133	153,093
35	R. DE ROSA	ITA	Althea BMW Racing Team	BMW S 1000 RR	09:56'14.350	1'39.572	-0.720	154,200
54	T. RAZGATLIOGLU	TUR	Kawasaki Puccetti Racing	Kawasaki ZX-10R	09:57'06.635	1'39.556	-0.016	154,225

These data/results cannot be reproduced, stored and/or transmitted in whole or in part by any manner of electronic, mechanical, photocopying, recording, broadcasting or otherwise now known or herein after developed without the previous express consent by the copyright owner, except for reproduction in daily press and regular printed publications on sale to the public within 60 days of the event related to those data/results and always provided that copyright symbol appears together as follows below.

© DORNA WSBK ORGANIZATION Srl 2016

Start	End	The results are provisional until the end of the time limit for protests and appeals
18/09/2016 09:50	10:06	and the completion of the technical checks.

FICR PERUGIA TIMING



Official Tyre Supplier



Official Timekeeper

German Round, 16-17-18 September 2016

Superstock 1000 - Best Sector & Speed Warm Up

Lausitzring 4.265 m

Best Lap

1	54 T. RAZGATLIOGLU	Kawasaki ZX-10R	1'39.556
2	35 R. DE ROSA	BMW S 1000 RR	1'39.572
3	2 R. TAMBURINI	Aorilia RSV4 RF	1'40.051
4	36 L. MERCADO	Ducati Panigale R	1'40.222
5	5 M. FACCANI	Ducati Panigale R	1'40.292
6	11 J. GUARNONI	Kawasaki ZX-10R	1'40.576
7	121 A. ANDREOZZI	Ducati Panigale R	1'40.655
8	12 M. RINALDI	Ducati Panigale R	1'40.684
9	43 F. MASSEI	Yamaha YZF R1	1'40.930
10	84 R. RUSSO	Yamaha YZF R1	1'40.938
11	59 A. MANTOVANI	Yamaha YZF R1	1'41.212
12	41 F. D'ANNUNZIO	BMW S 1000 RR	1'41.258
13	3 S. SUCHET	Yamaha YZF R1	1'41.364
14	74 K. CALIA	Aorilia RSV4 RF	1'41.379
15	47 R. HARTOG	Kawasaki ZX-10R	1'41.680
16	50 B. FONG	Kawasaki ZX-10R	1'41.705
17	123 L. SALVADORI	Yamaha YZF R1	1'41.710
18	44 A. TUCCI	Yamaha YZF R1	1'41.925
19	51 E. VIONNET	BMW S 1000 RR	1'41.990
20	67 B. STARING	Kawasaki ZX-10R	1'42.040
21	77 W. TESSELS	Kawasaki ZX-10R	1'42.069
22	15 F. SANDI	Yamaha YZF R1	1'42.209
23	19 J. PUFFE	Kawasaki ZX-10R	1'42.242
24	93 R. MERCANDELLI	Kawasaki ZX-10R	1'42.602
25	9 T. FINSTERBUSCH	Kawasaki ZX-10R	1'42.683
26	32 M. MOSER	Ducati Panigale R	1'43.291
27	92 B. LEU	Yamaha YZF R1	1'43.483
28	14 M. MAZZINA	Yamaha YZF R1	1'43.592
29	13 F. SANCHIONI	Kawasaki ZX-10R	1'43.927
30	91 L. OPPEDISANO	Kawasaki ZX-10R	1'44.024
31	99 F. CAVALLI	Kawasaki ZX-10R	1'44.899
32	70 L. VITALI	BMW S 1000 RR	

Best Sector & Speed

1	54 T. RAZGATLIOGLU	Kawasaki ZX-10R	282.8
2	35 R. DE ROSA	BMW S 1000 RR	282.0
3	3 S. SUCHET	Yamaha YZF R1	279.1
4	93 R. MERCANDELLI	Kawasaki ZX-10R	279.1
5	84 R. RUSSO	Yamaha YZF R1	278.4
6	12 M. RINALDI	Ducati Panigale R	277.0
7	74 K. CALIA	Aorilia RSV4 RF	277.0
8	123 L. SALVADORI	Yamaha YZF R1	276.2
9	36 L. MERCADO	Ducati Panigale R	275.5
10	67 B. STARING	Kawasaki ZX-10R	275.5
11	121 A. ANDREOZZI	Ducati Panigale R	275.5
12	59 A. MANTOVANI	Yamaha YZF R1	274.8
13	2 R. TAMBURINI	Aorilia RSV4 RF	274.8
14	14 M. MAZZINA	Yamaha YZF R1	274.8
15	47 R. HARTOG	Kawasaki ZX-10R	274.8
16	11 J. GUARNONI	Kawasaki ZX-10R	274.1
17	43 F. MASSEI	Yamaha YZF R1	274.1
18	92 B. LEU	Yamaha YZF R1	274.1
19	9 T. FINSTERBUSCH	Kawasaki ZX-10R	274.1
20	15 F. SANDI	Yamaha YZF R1	273.4
21	19 J. PUFFE	Kawasaki ZX-10R	273.4
22	77 W. TESSELS	Kawasaki ZX-10R	273.4
23	41 F. D'ANNUNZIO	BMW S 1000 RR	272.7
24	50 B. FONG	Kawasaki ZX-10R	272.7
25	44 A. TUCCI	Yamaha YZF R1	272.1
26	13 F. SANCHIONI	Kawasaki ZX-10R	270.0
27	51 E. VIONNET	BMW S 1000 RR	269.3
28	99 F. CAVALLI	Kawasaki ZX-10R	268.7
29	32 M. MOSER	Ducati Panigale R	264.7

Seg. 1

1	84 R. RUSSO	1.515
2	35 R. DE ROSA	1.518
3	54 T. RAZGATLIOGL	1.521
4	3 S. SUCHET	1.538
5	2 R. TAMBURINI	1.542
6	93 R. MERCANDELL	1.542
7	74 K. CALIA	1.546
8	12 M. RINALDI	1.551
9	14 M. MAZZINA	1.552
10	67 B. STARING	1.552
11	47 R. HARTOG	1.553
12	15 F. SANDI	1.555
13	19 J. PUFFE	1.555
14	36 L. MERCADO	1.555
15	9 T. FINSTERBUSC	1.556
16	44 A. TUCCI	1.556
17	59 A. MANTOVANI	1.557
18	121 A. ANDREOZZI	1.557
19	43 F. MASSEI	1.559
20	123 L. SALVADORI	1.559
21	11 J. GUARNONI	1.564
22	50 B. FONG	1.564
23	92 B. LEU	1.564
24	77 W. TESSELS	1.565
25	51 E. VIONNET	1.566
26	41 F. D'ANNUNZIO	1.574
27	13 F. SANCHIONI	1.590
28	99 F. CAVALLI	1.598
29	32 M. MOSER	1.617

Seg. 2

1	35 R. DE ROSA	24.997
2	36 L. MERCADO	25.051
3	121 A. ANDREOZZI	25.186
4	54 T. RAZGATLIOGL	25.199
5	84 R. RUSSO	25.214
6	2 R. TAMBURINI	25.245
7	12 M. RINALDI	25.299
8	43 F. MASSEI	25.362
9	11 J. GUARNONI	25.479
10	74 K. CALIA	25.498
11	41 F. D'ANNUNZIO	25.592
12	59 A. MANTOVANI	25.614
13	123 L. SALVADORI	25.673
14	3 S. SUCHET	25.696
15	77 W. TESSELS	25.701
16	47 R. HARTOG	25.725
17	51 E. VIONNET	25.737
18	44 A. TUCCI	25.739
19	50 B. FONG	25.748
20	15 F. SANDI	25.796
21	9 T. FINSTERBUSC	25.822
22	67 B. STARING	25.849
23	32 M. MOSER	25.936
24	92 B. LEU	26.029
25	19 J. PUFFE	26.037
26	14 M. MAZZINA	26.059
27	93 R. MERCANDELL	26.076
28	13 F. SANCHIONI	26.125
29	99 F. CAVALLI	26.694

Seg. 3

1	35 R. DE ROSA	30.821
2	54 T. RAZGATLIOGL	30.842
3	2 R. TAMBURINI	30.987
4	12 M. RINALDI	31.057
5	36 L. MERCADO	31.093
6	11 J. GUARNONI	31.134
7	41 F. D'ANNUNZIO	31.193
8	121 A. ANDREOZZI	31.225
9	43 F. MASSEI	31.294
10	84 R. RUSSO	31.314
11	3 S. SUCHET	31.417
12	74 K. CALIA	31.430
13	47 R. HARTOG	31.470
14	59 A. MANTOVANI	31.495
15	50 B. FONG	31.533
16	51 E. VIONNET	31.571
17	15 F. SANDI	31.625
18	77 W. TESSELS	31.641
19	67 B. STARING	31.659
20	123 L. SALVADORI	31.659
21	93 R. MERCANDELL	31.772
22	19 J. PUFFE	31.777
23	9 T. FINSTERBUSC	31.838
24	44 A. TUCCI	31.850
25	13 F. SANCHIONI	31.966
26	14 M. MAZZINA	32.038
27	32 M. MOSER	32.166
28	92 B. LEU	32.175
29	99 F. CAVALLI	32.261

Seg. 4

1	35 R. DE ROSA	22.604
2	54 T. RAZGATLIOGL	22.663
3	2 R. TAMBURINI	22.688
4	36 L. MERCADO	22.761
5	11 J. GUARNONI	22.777
6	12 M. RINALDI	22.794
7	3 S. SUCHET	22.796
8	59 A. MANTOVANI	22.798
9	121 A. ANDREOZZI	22.833
10	15 F. SANDI	22.945
11	77 W. TESSELS	22.951
12	47 R. HARTOG	22.953
13	44 A. TUCCI	22.960
14	123 L. SALVADORI	22.963
15	50 B. FONG	22.982
16	74 K. CALIA	22.994
17	84 R. RUSSO	23.016
18	67 B. STARING	23.020
19	41 F. D'ANNUNZIO	23.035
20	51 E. VIONNET	23.036
21	93 R. MERCANDELL	23.067
22	43 F. MASSEI	23.073
23	19 J. PUFFE	23.090
24	14 M. MAZZINA	23.188
25	9 T. FINSTERBUSC	23.258
26	92 B. LEU	23.302
27	32 M. MOSER	23.359
28	13 F. SANCHIONI	23.536
29	99 F. CAVALLI	23.838

Seg. 5

1	54 T. RAZGATLIOGL	19.294
2	2 R. TAMBURINI	19.375
3	84 R. RUSSO	19.435
4	35 R. DE ROSA	19.437
5	59 A. MANTOVANI	19.539
6	36 L. MERCADO	19.548
7	44 A. TUCCI	19.575
8	11 J. GUARNONI	19.579
9	43 F. MASSEI	19.631
10	67 B. STARING	19.645
11	15 F. SANDI	19.661
12	50 B. FONG	19.662
13	121 A. ANDREOZZI	19.671
14	74 K. CALIA	19.697
15	123 L. SALVADORI	19.703
16	12 M. RINALDI	19.705
17	3 S. SUCHET	19.708
18	19 J. PUFFE	19.760
19	93 R. MERCANDELL	19.761
20	51 E. VIONNET	19.767
21	41 F. D'ANNUNZIO	19.780
22	9 T. FINSTERBUSC	19.842
23	77 W. TESSELS	19.887
24	47 R. HARTOG	19.923
25	92 B. LEU	20.009
26	32 M. MOSER	20.065
27	14 M. MAZZINA	20.100
28	13 F. SANCHIONI	20.154
29	99 F. CAVALLI	20.301

18/09/2016

These data/results cannot be reproduced, stored and/or transmitted in whole or in part by any manner of electronic, mechanical, photocopying, recording, broadcasting or otherwise now known or herein after developed without the previous express consent by the copyright owner, except for reproduction in daily press and regular printed publications on sale to the public within 60 days of the event related to those data/results and always provided that copyright symbol appears together as follows below.

© DORNA WSBK ORGANIZATION Srl 2016

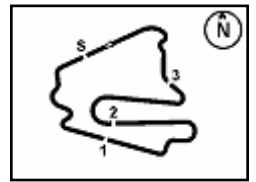
FICR PERUGIA TIMING



Official Tyre Supplier



Official Timekeeper



German Round, 16-17-18 September 2016

Superstock 1000 - Ideal Times Warm Up

Lausitzring 4.265 m

1 / 1

No. Rider	Nat	Bike	Seg. 1 Diff. 1	Seg. 2 Diff. 2	Seg. 3 Diff. 3	Seg. 4 Diff. 4	Seg. 5 Diff. 5	Ideal Time Best Lap	Pos.	Diff.
1 35 R. DE ROSA	ITA	BMW S 1000 RR	1.518 0.026	24.997 0.111	30.821	22.604 0.058	19.437	1'39.377 1'39.572	3	0.195
2 54 T. RAZGATLIOGLU	TUR	Kawasaki ZX-10R	1.521 0.037	25.199	30.842	22.663	19.294	1'39.519 1'39.556	2	0.037
3 2 R. TAMBURINI	ITA	Aprilia RSV4 RF	1.542 0.004	25.245 0.137	30.987 0.073	22.688	19.375	1'39.837 1'40.051	4	0.214
4 36 L. MERCADO	ARG	Ducati Panigale R	1.555 0.005	25.051 0.024	31.093	22.761 0.185	19.548	1'40.008 1'40.222	5	0.214
5 12 M. RINALDI	ITA	Ducati Panigale R	1.551 0.010	25.299	31.057 0.036	22.794 0.232	19.705	1'40.406 1'40.684	9	0.278
6 121 A. ANDREOZZI	ITA	Ducati Panigale R	1.557 0.014	25.186 0.119	31.225 0.042	22.833	19.671 0.008	1'40.472 1'40.655	8	0.183
7 84 R. RUSSO	ITA	Yamaha YZF R1	1.515 0.045	25.214 0.209	31.314	23.016 0.006	19.435 0.184	1'40.494 1'40.938	11	0.444
8 11 J. GUARNONI	FRA	Kawasaki ZX-10R	1.564	25.479	31.134	22.777 0.034	19.579 0.009	1'40.533 1'40.576	7	0.043
9 43 F. MASSEI	ITA	Yamaha YZF R1	1.559 0.005	25.362	31.294	23.073	19.631 0.006	1'40.919 1'40.930	10	0.011
10 59 A. MANTOVANI	ITA	Yamaha YZF R1	1.557 0.005	25.614 0.204	31.495	22.798	19.539	1'41.003 1'41.212	12	0.209
11 3 S. SUCHET	SUI	Yamaha YZF R1	1.538 0.011	25.696	31.417 0.083	22.796 0.095	19.708 0.020	1'41.155 1'41.364	14	0.209
12 74 K. CALIA	ITA	Aprilia RSV4 RF	1.546 0.006	25.498	31.430	22.994 0.202	19.697 0.006	1'41.165 1'41.379	15	0.214
13 41 F. D'ANNUNZIO	ITA	BMW S 1000 RR	1.574 0.008	25.592 0.011	31.193	23.035	19.780 0.065	1'41.174 1'41.258	13	0.084
14 50 B. FONG	USA	Kawasaki ZX-10R	1.564 0.008	25.748 0.048	31.533	22.982	19.662 0.160	1'41.489 1'41.705	17	0.216
15 123 L. SALVADORI	ITA	Yamaha YZF R1	1.559 0.011	25.673	31.659	22.963	19.703 0.142	1'41.557 1'41.710	18	0.153
16 15 F. SANDI	ITA	Yamaha YZF R1	1.555 0.006	25.796 0.505	31.625	22.945 0.116	19.661	1'41.582 1'42.209	23	0.627
17 47 R. HARTOG	NED	Kawasaki ZX-10R	1.553 0.013	25.725 0.009	31.470	22.953 0.034	19.923	1'41.624 1'41.680	16	0.056
18 51 E. VIONNET	SUI	BMW S 1000 RR	1.566 0.012	25.737 0.016	31.571 0.070	23.036 0.084	19.767 0.131	1'41.677 1'41.990	20	0.313
19 44 A. TUCCI	ITA	Yamaha YZF R1	1.556	25.739 0.144	31.850 0.004	22.960	19.575 0.097	1'41.680 1'41.925	19	0.245
20 67 B. STARING	AUS	Kawasaki ZX-10R	1.552 0.032	25.849	31.659 0.034	23.020	19.645 0.249	1'41.725 1'42.040	21	0.315
21 77 W. TESSELS	NED	Kawasaki ZX-10R	1.565 0.008	25.701	31.641 0.316	22.951	19.887	1'41.745 1'42.069	22	0.324
22 93 R. MERCANDELLI	ITA	Kawasaki ZX-10R	1.542 0.014	26.076 0.237	31.772	23.067	19.761 0.133	1'42.218 1'42.602	25	0.384
23 19 J. PUFFE	GER	Kawasaki ZX-10R	1.555	26.037	31.777	23.090	19.760 0.023	1'42.219 1'42.242	24	0.023
24 9 T. FINSTERBUSCH	GER	Kawasaki ZX-10R	1.556 0.006	25.822 0.096	31.838 0.003	23.258	19.842 0.262	1'42.316 1'42.683	26	0.367
25 14 M. MAZZINA	ITA	Yamaha YZF R1	1.552 0.009	26.059 0.488	32.038 0.032	23.188 0.054	20.100 0.072	1'42.937 1'43.592	29	0.655
26 92 B. LEU	SUI	Yamaha YZF R1	1.564 0.013	26.029 0.199	32.175	23.302 0.192	20.009	1'43.079 1'43.483	28	0.404
27 32 M. MOSER	GER	Ducati Panigale R	1.617 0.002	25.936	32.166 0.021	23.359 0.125	20.065	1'43.143 1'43.291	27	0.148
28 13 F. SANCHIONI	ITA	Kawasaki ZX-10R	1.590 0.010	26.125 0.397	31.966	23.536	20.154 0.149	1'43.371 1'43.927	30	0.556
29 99 F. CAVALLI	ITA	Kawasaki ZX-10R	1.598	26.694 0.048	32.261 0.071	23.838 0.088	20.301	1'44.692 1'44.899	32	0.207
Overall Ideal Time			1.515	24.997	30.821	22.604	19.294	1'39.231		

18/09/2016

These data/results cannot be reproduced, stored and/or transmitted in whole or in part by any manner of electronic, mechanical, photocopying, recording, broadcasting or otherwise now known or herein after developed without the previous express consent by the copyright owner, except for reproduction in daily press and regular printed publications on sale to the public within 60 days of the event related to those data/results and always provided that copyright symbol appears together as follows below.
© DORNA WSBK ORGANIZATION Srl 2016

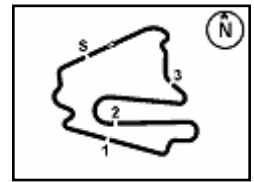
FICR PERUGIA TIMING



Official Tyre Supplier



Official Timekeeper



Lausitzring 4.265 m

German Round, 16-17-18 September 2016

Superstock 1000 - Chronological Analysis Warm Up

2	1.564	39.286	37.567	23.638	20.193	2'02.248 C	274.1	9:55'39.463
3	1.577	26.228	32.175	23.494	20.009	1'43.483	271.4	9:57'22.946
4	1.576	26.107	32.193	23.465	20.237	1'43.578	272.1	9:59'06.524
5	1.581	26.029	46.051	24.518	21.971	2'00.150	270.0	10:01'06.674
6	1.589	26.281	32.466	24.223	21.025	1'45.584	270.7	10:02'52.258
7	1.595	26.242	32.196	23.629	20.283	1'43.945	268.7	10:04'36.203
8	1.588	28.095	35.387	26.677	21.250	1'52.997	269.3	10:06'29.200

28° 14 M. MAZZINA (1'43.592)

Lap	Seg. 1	Seg. 2	Seg. 3	Seg. 4	Seg. 5	Lap Time	km/h	Local Time
1	1.600	26.837	34.354	24.704	20.748	1'44.673	260.2	9:51'50.002
2	1.561	26.547	32.070	23.242	20.172	1'43.592	274.1	9:55'18.267
3	1.568	26.135	32.838	25.944	20.610	1'47.095	266.7	9:57'05.362
4	1.563	27.722	33.167	23.629	20.473	1'46.554	272.7	9:58'51.916
5	1.560	26.059	32.693	23.562	20.100	1'43.974	274.8	10:00'35.890
6	1.552	26.377	32.038	23.188	20.513	1'43.668	274.1	10:02'19.558
7	1.588	26.130	32.214	23.246	20.542	1'43.720	269.3	10:04'03.278
8	1.566	26.315	33.963	27.019	21.252	1'50.115	273.4	10:05'53.393

29° 13 F. SANCHIONI (1'43.927)

Lap	Seg. 1	Seg. 2	Seg. 3	Seg. 4	Seg. 5	Lap Time	km/h	Local Time
1	1.598	26.649	32.747	24.383	20.472	1'45.849	268.0	9:51'55.622
2	1.596	26.125	32.279	23.556	20.450	1'44.006	268.7	9:55'25.477
3	1.600	26.522	31.966	23.536	20.303	1'43.927	268.0	9:57'09.404
4	1.593	26.397	32.691	24.199	20.154	1'45.034	269.3	9:58'54.438
5	1.590	39.447	33.201	23.845	20.732	1'58.815 C	270.0	10:00'53.253
6	1.631	26.458	1'03.303	28.559	32.876	2'32.827 P	263.4	10:03'26.080

30° 91 L. OPPEDISANO (1'44.024)

Lap	Seg. 1	Seg. 2	Seg. 3	Seg. 4	Seg. 5	Lap Time	km/h	Local Time
1								9:49'53.772
2						2'06.414		9:52'00.186
3						1'44.872		9:53'45.058
4						1'44.024		9:55'29.082
5						1'44.712		9:57'13.794
6						1'46.373		9:59'00.167
7						2'09.789 P		10:01'09.956

31° 99 F. CAVALLI (1'44.899)

Lap	Seg. 1	Seg. 2	Seg. 3	Seg. 4	Seg. 5	Lap Time	km/h	Local Time
1	1.599	27.312	35.774	25.066	21.204	1'46.006	268.0	9:52'02.431
2	1.598	28.487	37.803	23.953	21.804	1'53.645	268.7	9:53'48.437
3	1.598	26.742	32.332	23.926	20.301	1'44.899	266.7	9:55'42.082
4	1.600	27.008	32.261	24.041	20.538	1'45.448	268.0	9:57'26.981
5	1.618	27.661	39.996	29.900	32.687	2'11.862	264.7	9:59'12.429
6	1.616	26.815	32.550	23.876	20.429	1'45.286	266.0	10:01'24.291
7	1.601	26.694	33.068	24.113	20.552	1'46.028	268.7	10:03'09.577
8	1.607	26.732	32.369	23.838	20.560	1'45.106	268.0	10:04'55.605
								10:06'40.711

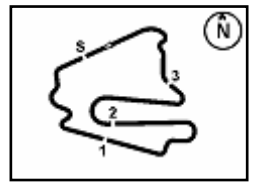
32° 70 L. VITALI

Lap	Seg. 1	Seg. 2	Seg. 3	Seg. 4	Seg. 5	Lap Time	km/h	Local Time
1								9:56'23.530
						10'06.915 P		10:06'30.445

P = Pits In/Out - C = Lap-Time Cancelled

These data/results cannot be reproduced, stored and/or transmitted in whole or in part by any manner of electronic, mechanical, photocopying, recording, broadcasting or otherwise now known or herein after developed without the previous express consent by the copyright owner, except for reproduction in daily press and regular printed publications on sale to the public within 60 days of the event related to those data/results and always provided that copyright symbol appears together as follows below.

© DORNA WSBK ORGANIZATION Srl 2016

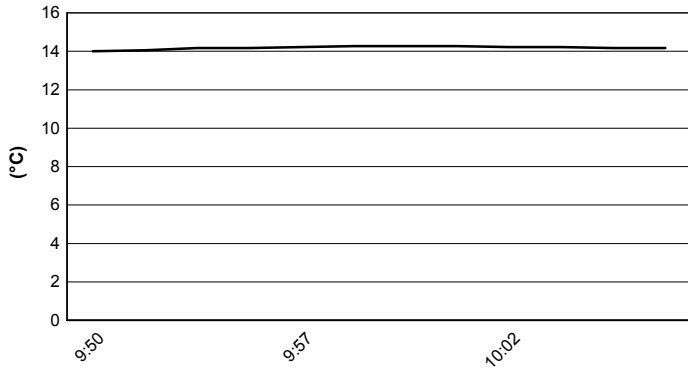


Lausitzring 4.265 m

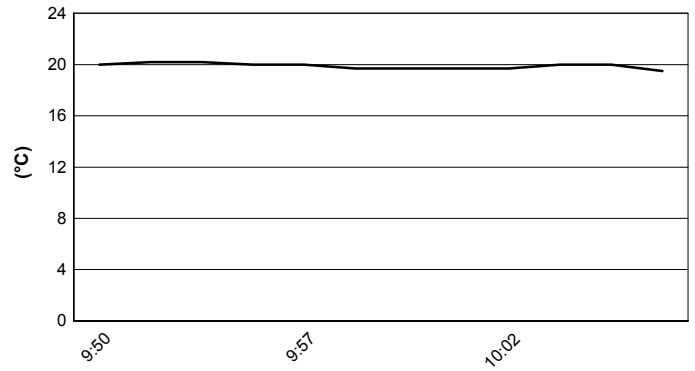
German Round, 16-17-18 September 2016 Superstock 1000 - Weather Report Warm Up

Session started 9:50 Session ended 10:06

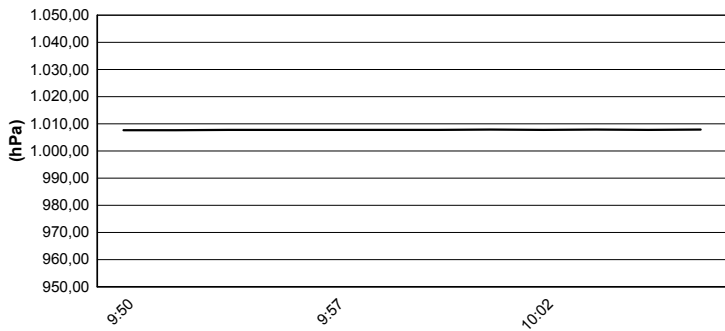
Air Temperature



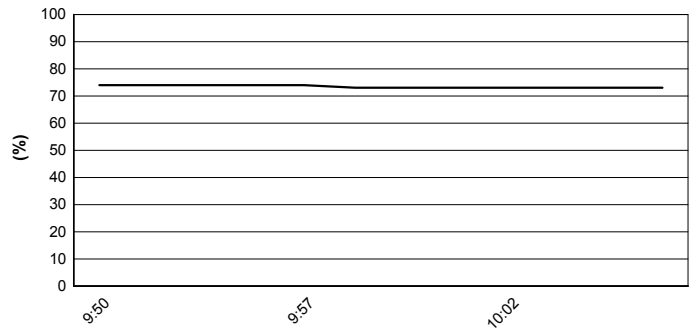
Track Temperature



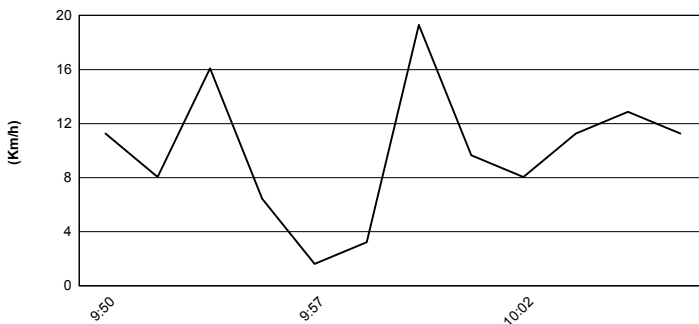
Air Pressure



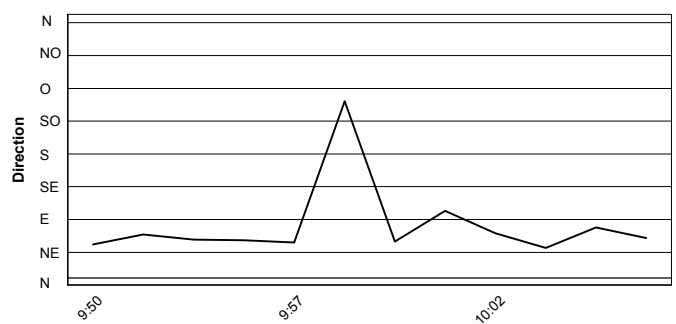
Humidity



Wind Speed



Wind Direction



These data/results cannot be reproduced, stored and/or transmitted in whole or in part by any manner of electronic, mechanical, photocopying, recording, broadcasting or otherwise now known or herein after developed without the previous express consent by the copyright owner, except for reproduction in daily press and regular printed publications on sale to the public within 60 days of the event related to those data/results and always provided that copyright symbol appears together as follows below.
© DORNA WSBK ORGANIZATION Srl 2016





Lausitzring 4.265 m

German Round, 16-17-18 September 2016

Superstock 1000 - Starting Grid

14 Laps x 4,265 km = 59,710 km



			1		
	3	2	54		1
	5 FACCANI M. Ducati 1'38.984	2 TAMBURINI R. Aprilia 1'38.933	RAZGATLIOGLU T. Kawasaki 1'38.915		
		5	35		2
6		12 RINALDI M. Ducati 1'39.089	DE ROSA R. BMW 1'38.819		
11 GUARNONI J. Kawasaki 1'39.520			4		
	9	8			3
	121 ANDREOZZI A. Ducati 1'39.912	84 RUSSO R. Yamaha 1'39.820			
		11	59		4
		15 SANDI F. Yamaha 1'40.365	MANTOVANI A. Yamaha 1'40.287		
12					5
123 SALVADORI L. Yamaha 1'40.437		14			
	15	74 CALIA K. Aprilia 1'40.649			
	32 MOSER M. Ducati 1'40.773		16		6
		17	51 VIONNET E. BMW 1'40.857		
18		41 D'ANNUNZIO F. BMW 1'40.867			7
77 TESELS W. Kawasaki 1'40.885			19		
	21	20	67 STARING B. Kawasaki 1'40.976		
	47 HARTOG R. Kawasaki 1'41.100	50 FONG B. Kawasaki 1'40.980			
		23			8
	24	43 MASSEI F. Yamaha 1'41.645	44 TUCCI A. Yamaha 1'41.346		
14 MAZZINA M. Yamaha 1'41.677					9
	27	26	93 MERCANDELLI R. Kawasaki 1'41.929		
	9 FINSTERBUSCH T. Kawasaki 1'42.323	19 PUFFE J. Kawasaki 1'41.979			
		29			10
	30	92 LEU B. Yamaha 1'43.124	91 OPPEDISANO L. Kawasaki 1'42.702		
99 CAVALLI F. Kawasaki 1'44.097					11
		32			
		70 VITALI L. BMW 1'40.873	13 SANCHIONI F. Kawasaki 1'47.234		

N. 35 (De Rosa R.) has been penalized to drop 3 grid positions
N. 70 (Vitali L.) will start from the pit lane

Jury President

..... Race Director

These data/results cannot be reproduced, stored and/or transmitted in whole or in part by any manner of electronic, mechanical, photocopying, recording, broadcasting or otherwise now known or herein after developed without the previous express consent by the copyright owner, except for reproduction in daily press and regular printed publications on sale to the public within 60 days of the event related to those data/results and always provided that copyright symbol appears together as follows below.

© DORNA WSBK ORGANIZATION Srl 2016

FICR PERUGIA TIMING



Official Tyre Supplier



Official Timekeeper