

Imola Circuit 4.936 m

1 / 2

Italian Round, 29-30 April 1 May 2016

World Superbike - Results Race 1

Laps 18 = 88,848 Km - Time Of Race 32'15.999 - Avg. 165,213 km/h

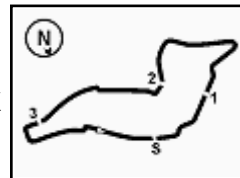
Pos	Race	Grid	No. Rider	Nat	Team	Bike	LL	Gap	Fastest Lap	Speed	Qualifying		Ranking		
											Time	Speed	R1	R2	Tot
1	1	7	C. DAVIES	GBR	Aruba.it Racing - Ducati	Ducati Panigale R	18		1'46.700	289,1	1'45.598	289,1	25	161	2
2	3	1	J. REA	GBR	Kawasaki Racing Team	Kawasaki ZX-10R	18	3.406	1'46.845	292,2	1'46.328	291,4	20	201	1
3	4	66	T. SYKES	GBR	Kawasaki Racing Team	Kawasaki ZX-10R	18	3.729	1'47.103	292,2	1'46.331	287,5	16	138	3
4	6	81	J. TORRES	ESP	Allthea BMW Racing Team	BMW S1000 RR	18	13.631	1'47.723	290,6	1'46.867	290,6	13	78	5
5	2	34	D. GIUGLIANO	ITA	Aruba.it Racing - Ducati	Ducati Panigale R	18	19.948	1'47.152	288,3	1'46.055	287,5	11	75	6
6	7	2	L. CAMIER	GBR	MV Agusta Reparto Corse	MV Agusta 1000 F4	18	25.586	1'47.851	289,1	1'46.911	283,7	10	49	10
7	11	60	M. VAN DER MARK	NED	Honda World Superbike Team	Honda CBR1000RR SP	18	27.262	1'48.647	290,6	1'47.563	287,5	9	99	4
8	5	32	L. SAVADORI	ITA	IodaRacing Team	Aprilia RSV4 RF	18	28.300	1'47.756	289,8	1'46.531	289,8	8	59	8
9	9	69	N. HAYDEN	USA	Honda World Superbike Team	Honda CBR1000RR SP	18	29.263	1'48.154	288,3	1'47.429	288,3	7	74	7
10	12	12	X. FORÉS	ESP	Barni Racing Team	Ducati Panigale R	18	29.426	1'48.623	287,5	1'47.811	286,0	6	43	12
11	13	22	A. LOWES	GBR	Pata Yamaha Official WorldSBK Team	Yamaha YZF R1	18	29.622	1'48.535	289,1	1'48.001	287,5	5	49	11
12	10	151	M. BAIOTTO	ITA	VFT Racing	Ducati Panigale R	18	30.005	1'48.579	286,8	1'47.471	282,3	4	12	18
13	8	21	M. REITERBERGER	GER	Allthea BMW Racing Team	BMW S1000 RR	18	34.667	1'48.307	290,6	1'46.952	290,6	3	43	13
14	14	25	J. BROOKES	AUS	Milwaukee BMW	BMW S1000 RR	18	57.050	1'49.080	290,6	1'48.046	286,0	2	27	16
15	16	15	A. DE ANGELIS	RSM	IodaRacing Team	Aprilia RSV4 RF	18	1'03.267	1'49.468	289,1	1'49.321	286,0	1	30	15
16	15	17	K. ABRAHAM	CZE	Milwaukee BMW	BMW S1000 RR	18	1'14.668	1'50.620	286,8	1'49.167	285,2		14	17
17	20	16	J. HOOK	AUS	Grillini Racing Team	Kawasaki ZX-10R	18	1'50.796	1'52.792	279,3	1'51.827	278,6			
18	19	119	P. SZKOPEK	POL	Team Tóth	Yamaha YZF R1	16	2 Laps	1'56.225	274,4	1'51.020	277,2			
-----Not Classified-----															
RET	21	11	S. AL SULAITI	QAT	Pedercini Racing	Kawasaki ZX-10R	7	11 Laps	1'52.928	275,1	1'52.108	273,7			
RET	17	9	D. SCHMITTER	SUI	Grillini Racing Team	Kawasaki ZX-10R	0				1'49.857	277,9			
RET	18	56	P. SEBESTYÉN	HUN	Team Tóth	Yamaha YZF R1	0				1'49.916	276,5			

AIR	Humidity:	42%	Temp:	20°C	Fastest Lap	3° Chaz Davies	1'46.700	166,538	Km/h
TRACK	Condition:	Dry	Temp:	32°C	Lap Record:	2015 T.Sykes	1'46.707	166,530	Km/h
					Best Lap	2016 C.Davies	1'45.598	168,280	Km/h

LAP LEADERS					TOTAL LEADER LAPS			
No.	Rider	From	To	Laps	Total	No.	Rider	Laps
7	C. DAVIES	1	18	18	18	7	C. DAVIES	65
66	T. SYKES					66	T. SYKES	56
1	J. REA					1	J. REA	44
60	M. VAN DER MARK					60	M. VAN DER MARK	8
25	J. BROOKES					25	J. BROOKES	5
22	A. LOWES					22	A. LOWES	1
44	L. MAHIAS					44	L. MAHIAS	1

30/04/2016 Start 13:12 End 13:46

The results are provisional until the end of the time limit for protests and appeals and the completion of the technical checks.

**Italian Round, 29-30 April 1 May 2016**
World Superbike - Results Race 1

RACE HIGHLIGHTS

12.58.01		Warm-up Lap Start
12.59.53	56 Sebestyén	Crashed - Turn 15
12.59.54	9 Schmitter	Crashed - Turn 15
13.00.18		Start Delayed
13.09.45		Warm-up Lap Start
13.12.48		Start
13.13.58		No Jump Start
13.14.45	56 Sebestyén	Out
13.14.51	9 Schmitter	Out
13.20.13	119 Szkopek	Entered Pits
13.27.42	1 Rea	On the Gravel - Re-Joined - Turn 7
13.27.54	11 Al Sulaiti	Entered Pits
13.29.42	11 Al Sulaiti	Out
13.32.24	21 Reiterberger	On the Gravel - Re-Joined - Turn 18
13.46.59		End Of Session

30/04/2016 Start End
13:12 13:46

The results are provisional until the end of the time limit for protests and appeals
and the completion of the technical checks.

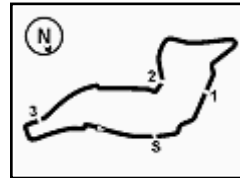
FICR PERGGIA TIMING



Official Tyre Supplier



Official Timekeeper



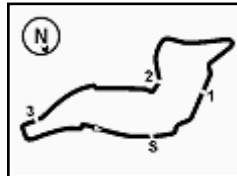
Imola Circuit 4.936 m

1 / 3

Italian Round, 29-30 April 1 May 2016 World Superbike - Lap Chart Race 1

Pos	Lap																	
	1	2	3	4	5	6	7	8	9	10	11	12	13	14	15	16	17	18
1	7	7	7	7	7	7	7	7	7	7	7	7	7	7	7	7	7	7
2	1	1	1	1	1	1	1	1	1	1	1	1	1	1	1	1	1	1
3	66	66	66	66	66	66	66	66	66	66	66	66	66	66	66	66	66	66
4	34	34	34	34	34	34	34	34	34	34	34	81	81	81	81	81	81	81
5	32	32	32	32	32	81	81	81	81	81	81	81	34	2	2	2	34	34
6	81	81	81	81	81	32	2	2	2	2	2	2	34	34	34	2	2	2
7	2	2	2	2	2	2	69	69	32	69	69	69	69	69	69	60	60	60
8	69	69	69	69	69	69	32	32	69	60	60	60	60	60	60	69	69	32
9	60	60	60	60	60	60	60	60	32	32	32	32	32	32	32	32	32	69
10	21	21	21	21	21	22	22	22	22	22	22	22	22	22	22	22	22	12
11	22	22	22	22	22	21	12	12	12	12	12	12	12	12	12	12	12	22
12	12	12	12	12	12	12	21	21	21	21	151	151	151	151	151	151	151	151
13	151	151	151	151	151	151	151	151	151	151	21	21	21	21	21	21	21	21
14	15	15	15	25	25	25	25	25	25	25	25	25	25	25	25	25	25	25
15	25	25	25	15	15	15	15	15	15	15	15	15	15	15	15	15	15	15
16	17	17	17	17	17	17	17	17	17	17	17	17	17	17	17	17	17	17
17	16	16	16	16	16	16	16	16	16	16	16	16	16	16	16	16	16	16
18	119	11	11	11	11	11	11	119	119	119	119	119	119	119	119	119		
19	11	119	119	119	119	119	119											

Final Result		
1	7 C. DAVIES	Laps 18
2	1 J. REA	3.406
3	66 T. SYKES	3.729
4	81 J. TORRES	13.631
5	34 D. GIUGLIANO	19.948
6	2 L. CAMIER	25.586
7	60 M. VAN DER MARK	27.262
8	32 L. SAVADORI	28.300
9	69 N. HAYDEN	29.263
10	12 X. FORÉS	29.426
11	22 A. LOWES	29.622
12	151 M. BAIOTTO	30.005
13	21 M. REITERBERGER	34.667
14	25 J. BROOKES	57.050
15	15 A. DE ANGELIS	1'03.267
16	17 K. ABRAHAM	1'14.668
17	16 J. HOOK	1'50.796
18	119 P. SZKOPEK	2 Laps
RET	11 S. AL SULAITI	11 Laps
RET	56 P. SEBESTYÉN	
RET	9 D. SCHMITTER	



Imola Circuit 4.936 m

Italian Round, 29-30 April 1 May 2016

World Superbike - Lap Chart Race 1

Lap 1

1	7 C.Davies (GBR)	
2	1 J.Rea (GBR)	0.613
3	66 T.Sykes (GBR)	1.144
4	34 D.Giugliano (ITA)	1.516
5	32 L.Savadori (ITA)	2.021
6	81 J.Torres (ESP)	2.929
7	2 L.Camier (GBR)	3.548
8	69 N.Hayden (USA)	4.046
9	60 M.van der Mark (NED)	4.153
10	21 M.Reiterberger (GER)	4.456
11	22 A.Lowes (GBR)	5.133
12	12 X.Forés (ESP)	5.514
13	151 M.Baiocco (ITA)	5.747
14	15 A.De Angelis (RSM)	6.190
15	25 J.Brookes (AUS)	6.705
16	17 K.Abraham (CZE)	7.400
17	16 J.Hook (AUS)	8.945
18	119 P.Szkopek (POL)	10.855
19	11 S.Ai Sulaiti (QAT)	11.727

16	17 K.Abraham (CZE)	20.361
17	16 J.Hook (AUS)	27.879
18	11 S.Ai Sulaiti (QAT)	31.833
19	119 P.Szkopek (POL)	128.979

Lap 5

1	7 C.Davies (GBR)	
2	1 J.Rea (GBR)	0.922
3	66 T.Sykes (GBR)	2.780
4	34 D.Giugliano (ITA)	5.326
5	32 L.Savadori (ITA)	6.972
6	81 J.Torres (ESP)	7.393
7	2 L.Camier (GBR)	7.819
8	69 N.Hayden (USA)	9.674
9	60 M.van der Mark (NED)	11.720
10	21 M.Reiterberger (GER)	12.242
11	22 A.Lowes (GBR)	12.726
12	12 X.Forés (ESP)	13.720
13	151 M.Baiocco (ITA)	14.901
14	25 J.Brookes (AUS)	17.225
15	15 A.De Angelis (RSM)	18.178
16	17 K.Abraham (CZE)	24.966
17	16 J.Hook (AUS)	33.899
18	11 S.Ai Sulaiti (QAT)	37.708
19	119 P.Szkopek (POL)	143.937

Lap 2

1	7 C.Davies (GBR)	
2	1 J.Rea (GBR)	0.813
3	66 T.Sykes (GBR)	1.531
4	34 D.Giugliano (ITA)	1.952
5	32 L.Savadori (ITA)	3.061
6	81 J.Torres (ESP)	4.310
7	2 L.Camier (GBR)	4.742
8	69 N.Hayden (USA)	5.577
9	60 M.van der Mark (NED)	6.346
10	21 M.Reiterberger (GER)	7.332
11	22 A.Lowes (GBR)	7.716
12	12 X.Forés (ESP)	8.072
13	151 M.Baiocco (ITA)	8.870
14	15 A.De Angelis (RSM)	9.612
15	25 J.Brookes (AUS)	10.207
16	17 K.Abraham (CZE)	12.281
17	16 J.Hook (AUS)	16.074
18	11 S.Ai Sulaiti (QAT)	19.010
19	119 P.Szkopek (POL)	24.302

Lap 6

1	7 C.Davies (GBR)	
2	1 J.Rea (GBR)	0.623
3	66 T.Sykes (GBR)	3.049
4	34 D.Giugliano (ITA)	6.523
5	81 J.Torres (ESP)	8.455
6	32 L.Savadori (ITA)	8.600
7	2 L.Camier (GBR)	8.888
8	69 N.Hayden (USA)	10.765
9	60 M.van der Mark (NED)	13.351
10	22 A.Lowes (GBR)	14.796
11	21 M.Reiterberger (GER)	15.228
12	12 X.Forés (ESP)	15.323
13	151 M.Baiocco (ITA)	16.180
14	25 J.Brookes (AUS)	19.082
15	15 A.De Angelis (RSM)	20.346
16	17 K.Abraham (CZE)	31.603
17	16 J.Hook (AUS)	39.699
18	11 S.Ai Sulaiti (QAT)	43.874
19	119 P.Szkopek (POL)	

Lap 3

1	7 C.Davies (GBR)	
2	1 J.Rea (GBR)	0.958
3	66 T.Sykes (GBR)	2.102
4	34 D.Giugliano (ITA)	2.950
5	32 L.Savadori (ITA)	4.405
6	81 J.Torres (ESP)	5.333
7	2 L.Camier (GBR)	5.893
8	69 N.Hayden (USA)	7.207
9	60 M.van der Mark (NED)	8.293
10	21 M.Reiterberger (GER)	9.053
11	22 A.Lowes (GBR)	9.554
12	12 X.Forés (ESP)	10.127
13	151 M.Baiocco (ITA)	11.049
14	15 A.De Angelis (RSM)	12.631
15	25 J.Brookes (AUS)	12.987
16	17 K.Abraham (CZE)	16.415
17	16 J.Hook (AUS)	22.166
18	11 S.Ai Sulaiti (QAT)	25.704
19	119 P.Szkopek (POL)	33.827

Lap 7

1	7 C.Davies (GBR)	
2	1 J.Rea (GBR)	0.733
3	66 T.Sykes (GBR)	3.497
4	34 D.Giugliano (ITA)	7.386
5	81 J.Torres (ESP)	9.264
6	2 L.Camier (GBR)	9.704
7	69 N.Hayden (USA)	12.256
8	32 L.Savadori (ITA)	13.649
9	60 M.van der Mark (NED)	15.157
10	22 A.Lowes (GBR)	16.094
11	12 X.Forés (ESP)	16.793
12	21 M.Reiterberger (GER)	17.354
13	151 M.Baiocco (ITA)	18.027
14	25 J.Brookes (AUS)	21.108
15	15 A.De Angelis (RSM)	25.738
16	17 K.Abraham (CZE)	36.229
17	16 J.Hook (AUS)	45.317
18	11 S.Ai Sulaiti (QAT)	49.776
19	119 P.Szkopek (POL)	

Lap 4

1	7 C.Davies (GBR)	
2	1 J.Rea (GBR)	0.852
3	66 T.Sykes (GBR)	2.293
4	34 D.Giugliano (ITA)	4.279
5	32 L.Savadori (ITA)	5.548
6	81 J.Torres (ESP)	6.409
7	2 L.Camier (GBR)	6.786
8	69 N.Hayden (USA)	8.220
9	60 M.van der Mark (NED)	10.063
10	21 M.Reiterberger (GER)	10.379
11	22 A.Lowes (GBR)	11.160
12	12 X.Forés (ESP)	11.637
13	151 M.Baiocco (ITA)	13.021
14	25 J.Brookes (AUS)	14.974
15	15 A.De Angelis (RSM)	15.677

Lap 8

1	7 C.Davies (GBR)	
2	1 J.Rea (GBR)	0.705
3	66 T.Sykes (GBR)	3.956
4	34 D.Giugliano (ITA)	8.467
5	81 J.Torres (ESP)	9.935
6	2 L.Camier (GBR)	10.398
7	69 N.Hayden (USA)	15.419
8	32 L.Savadori (ITA)	15.600
9	60 M.van der Mark (NED)	16.513
10	22 A.Lowes (GBR)	17.422

11	12 X.Forés (ESP)	18.079
12	21 M.Reiterberger (GER)	18.844
13	151 M.Baiocco (ITA)	19.757
14	25 J.Brookes (AUS)	23.172
15	15 A.De Angelis (RSM)	28.899
16	17 K.Abraham (CZE)	40.535
17	16 J.Hook (AUS)	50.798
18	119 P.Szkopek (POL)	

Lap 9

1	7 C.Davies (GBR)	
2	1 J.Rea (GBR)	4.461
3	66 T.Sykes (GBR)	4.839
4	34 D.Giugliano (ITA)	9.828
5	81 J.Torres (ESP)	10.772
6	2 L.Camier (GBR)	11.896
7	32 L.Savadori (ITA)	17.568
8	69 N.Hayden (USA)	17.935
9	60 M.van der Mark (NED)	18.200
10	22 A.Lowes (GBR)	18.896
11	12 X.Forés (ESP)	19.715
12	21 M.Reiterberger (GER)	20.090
13	151 M.Baiocco (ITA)	21.444
14	25 J.Brookes (AUS)	25.201
15	15 A.De Angelis (RSM)	32.927
16	17 K.Abraham (CZE)	45.536
17	16 J.Hook (AUS)	56.639
18	119 P.Szkopek (POL)	

Lap 10

1	7 C.Davies (GBR)	
2	1 J.Rea (GBR)	5.025
3	66 T.Sykes (GBR)	5.663
4	34 D.Giugliano (ITA)	10.505
5	81 J.Torres (ESP)	11.391
6	2 L.Camier (GBR)	12.728
7	69 N.Hayden (USA)	19.926
8	60 M.van der Mark (NED)	20.125
9	32 L.Savadori (ITA)	20.540
10	22 A.Lowes (GBR)	20.812
11	12 X.Forés (ESP)	21.153
12	21 M.Reiterberger (GER)	21.312
13	151 M.Baiocco (ITA)	22.798
14	25 J.Brookes (AUS)	27.178
15	15 A.De Angelis (RSM)	36.321
16	17 K.Abraham (CZE)	48.933
17	16 J.Hook (AUS)	102.381
18	119 P.Szkopek (POL)	

Lap 11

1	7 C.Davies (GBR)	
2	1 J.Rea (GBR)	5.110
3	66 T.Sykes (GBR)	6.009
4	34 D.Giugliano (ITA)	10.762
5	81 J.Torres (ESP)	11.829
6	2 L.Camier (GBR)	13.043
7	69 N.Hayden (USA)	21.229
8	60 M.van der Mark (NED)	21.440
9	32 L.Savadori (ITA)	21.987
10	22 A.Lowes (GBR)	22.632
11	12 X.Forés (ESP)	23.006
12	151 M.Baiocco (ITA)	23.776
13	21 M.Reiterberger (GER)	27.186
14	25 J.Brookes (AUS)	28.993
15	15 A.De Angelis (RSM)	39.356
16	17 K.Abraham (CZE)	52.462
17	16 J.Hook (AUS)	108.261
18	119 P.Szkopek (POL)	

Lap 12

1	7 C.Davies (GBR)	
2	1 J.Rea (GBR)	5.578
3	66 T.Sykes (GBR)	6.427
4	81 J.Torres (ESP)	12.680
5	34 D.Giugliano (ITA)	13.740
6	2 L.Camier (GBR)	14.054
7	69 N.Hayden (USA)	22.775
8	60 M.van der Mark (NED)	22.994
9	32 L.Savadori (ITA)	23.607

Lap 13

1	7 C.Davies (GBR)	
2	1 J.Rea (GBR)	5.648
3	66 T.Sykes (GBR)	6.403
4	81 J.Torres (ESP)	13.160
5	2 L.Camier (GBR)	14.731
6	34 D.Giugliano (ITA)	15.265
7	69 N.Hayden (USA)	23.958
8	60 M.van der Mark (NED)	24.522
9	32 L.Savadori (ITA)	24.986
10	22 A.Lowes (GBR)	25.290
11	12 X.Forés (ESP)	25.864
12	151 M.Baiocco (ITA)	26.865
13	21 M.Reiterberger (GER)	31.135
14	25 J.Brookes (AUS)	33.326
15	15 A.De Angelis (RSM)	46.258
16	17 K.Abraham (CZE)	58.988
17	16 J.Hook (AUS)	119.424
18	119 P.Szkopek (POL)	

Lap 14

1	7 C.Davies (GBR)	
2	1 J.Rea (GBR)	5.602
3	66 T.Sykes (GBR)	6.157
4	81 J.Torres (ESP)	13.520
5	2 L.Camier (GBR)	15.380
6	34 D.Giugliano (ITA)	16.386
7	69 N.Hayden (USA)	25.034
8	60 M.van der Mark (NED)	25.457
9	32 L.Savadori (ITA)	26.003
10	22 A.Lowes (GBR)	26.293
11	12 X.Forés (ESP)	26.753
12	151 M.Baiocco (ITA)	27.721
13	21 M.Reiterberger (GER)	32.082
14	25 J.Brookes (AUS)	34.507
15	15 A.De Angelis (RSM)	48.903
16	17 K.Abraham (CZE)	102.153
17	16 J.Hook (AUS)	124.899
18	119 P.Szkopek (POL)	

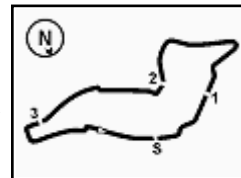
Lap 15

1	7 C.Davies (GBR)	
2	1 J.Rea (GBR)	5.437
3	66 T.Sykes (GBR)	5.903
4	81 J.Torres (ESP)	13.724
5	2 L.Camier (GBR)	15.721
6	34 D.Giugliano (ITA)	17.016
7	69 N.Hayden (USA)	26.252
8	60 M.van der Mark (NED)	26.395
9	32 L.Savadori (ITA)	26.838
10	22 A.Lowes (GBR)	27.127
11	12 X.Forés (ESP)	27.531
12	151 M.Baiocco (ITA)	28.303
13	21 M.Reiterberger (GER)	32.712
14	25 J.Brookes (AUS)	35.965
15	15 A.De Angelis (RSM)	51.740
16	17 K.Abraham (CZE)	105.581
17	16 J.Hook (AUS)	130.811
18	119 P.Szkopek (POL)	

Lap 16

1	7 C.Davies (GBR)	
2	1 J.Rea (GBR)	5.301
3	66 T.Sykes (GBR)	5.732
4	81 J.Torres (ESP)	14.011
5	34 D.Giugliano (ITA)	17.381
6	2 L.Camier (GBR)	25.765
7	60 M.van der Mark (NED)	27.415
8	69 N.Hayden (USA)	27.803





Imola Circuit 4.936 m

3 / 3

Italian Round, 29-30 April 1 May 2016 World Superbike - Lap Chart Race 1

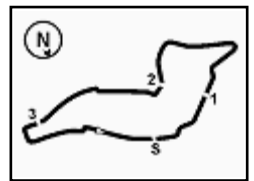
9	32 L.Savadori (ITA)	27.998
10	22 A.Lowes (GBR)	28.344
11	12 X.Forés (ESP)	28.685
12	151 M.Baiocco (ITA)	29.410
13	21 M.Reiterberger (GER)	33.735
14	25 J.Brookes (AUS)	37.059
15	15 A.De Angelis (RSM)	55.473
16	17 K.Abraham (CZE)	1'08.653
17	16 J.Hook (AUS)	1'37.099
18	119 P.Szkopek (POL)	

Lap 17

1	7 C.Davies (GBR)	
2	1 J.Rea (GBR)	4.598
3	66 T.Sykes (GBR)	5.034
4	81 J.Torres (ESP)	14.016
5	34 D.Giugliano (ITA)	18.577
6	2 L.Camier (GBR)	26.428
7	60 M.van der Mark (NED)	27.573
8	69 N.Hayden (USA)	28.071
9	32 L.Savadori (ITA)	28.472
10	22 A.Lowes (GBR)	29.155
11	12 X.Forés (ESP)	29.460
12	151 M.Baiocco (ITA)	29.906
13	21 M.Reiterberger (GER)	34.559
14	25 J.Brookes (AUS)	38.242
15	15 A.De Angelis (RSM)	58.723
16	17 K.Abraham (CZE)	1'11.530
17	16 J.Hook (AUS)	1'41.902

Lap 18

1	7 C.Davies (GBR)	
2	1 J.Rea (GBR)	3.406
3	66 T.Sykes (GBR)	3.729
4	81 J.Torres (ESP)	13.631
5	34 D.Giugliano (ITA)	19.948
6	2 L.Camier (GBR)	25.586
7	60 M.van der Mark (NED)	27.262
8	32 L.Savadori (ITA)	28.300
9	69 N.Hayden (USA)	29.263
10	12 X.Forés (ESP)	29.426
11	22 A.Lowes (GBR)	29.622
12	151 M.Baiocco (ITA)	30.005
13	21 M.Reiterberger (GER)	34.667
14	25 J.Brookes (AUS)	57.050
15	15 A.De Angelis (RSM)	1'03.267
16	17 K.Abraham (CZE)	1'14.668
17	16 J.Hook (AUS)	1'50.796



Imola Circuit 4.936 m

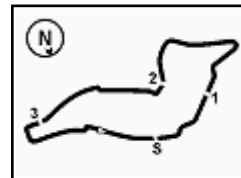
Italian Round, 29-30 April 1 May 2016
World Superbike - Best Sector & Speed Race 1
Results

Pos	Rider	Team	Laps
1	7 C. DAVIES	Ducati Panigale R	18
2	1 J. REA	Kawasaki ZX-10R	3.406
3	66 T. SYKES	Kawasaki ZX-10R	3.729
4	81 J. TORRES	BMW S1000 RR	13.631
5	34 D. GIUGLIANO	Ducati Panigale R	19.948
6	2 L. CAMIER	MV Austa 1000 F4	25.586
7	60 M. VAN DER MARK	Honda CBR1000RR SP	27.262
8	32 L. SAVADORI	Aorilia RSV4 RF	28.300
9	69 N. HAYDEN	Honda CBR1000RR SP	29.263
10	12 X. FORÉS	Ducati Panigale R	29.426
11	22 A. LOWES	Yamaha YZF R1	29.622
12	151 M. BAIOTTO	Ducati Panigale R	30.005
13	21 M. REITERBERGER	BMW S1000 RR	34.667
14	25 J. BROOKES	BMW S1000 RR	57.050
15	15 A. DE ANGELIS	Aorilia RSV4 RF	1'03.267
16	17 K. ABRAHAM	BMW S1000 RR	1'14.668
17	16 J. HOOK	Kawasaki ZX-10R	1'50.796
18	119 P. SZKOPEK	Yamaha YZF R1	2 Laos
RET	11 S. AL SULAITI	Kawasaki ZX-10R	11 Laos
RET	56 P. SEBESTYEN	Yamaha YZF R1	
RET	9 D. SCHMITTER	Kawasaki ZX-10R	

Top Speeds

Pos	Rider	Team	Speed
1	66 T. SYKES	Kawasaki ZX-10R	292.2
2	1 J. REA	Kawasaki ZX-10R	292.2
3	60 M. VAN DER MARK	Honda CBR1000RR SP	290.6
4	21 M. REITERBERGER	BMW S1000 RR	290.6
5	81 J. TORRES	BMW S1000 RR	290.6
6	25 J. BROOKES	BMW S1000 RR	290.6
7	32 L. SAVADORI	Aorilia RSV4 RF	289.8
8	7 C. DAVIES	Ducati Panigale R	289.1
9	2 L. CAMIER	MV Austa 1000 F4	289.1
10	15 A. DE ANGELIS	Aorilia RSV4 RF	289.1
11	22 A. LOWES	Yamaha YZF R1	289.1
12	34 D. GIUGLIANO	Ducati Panigale R	288.3
13	69 N. HAYDEN	Honda CBR1000RR SP	288.3
14	12 X. FORÉS	Ducati Panigale R	287.5
15	17 K. ABRAHAM	BMW S1000 RR	286.8
16	151 M. BAIOTTO	Ducati Panigale R	286.8
17	16 J. HOOK	Kawasaki ZX-10R	279.3
18	11 S. AL SULAITI	Kawasaki ZX-10R	275.1
19	119 P. SZKOPEK	Yamaha YZF R1	274.4

Seg. 1		Seg. 2		Seg. 3		Seg. 4		Seg. 5	
1	66 T. SYKES 7.045	1	7 C. DAVIES 15.462	1	7 C. DAVIES 33.316	1	7 C. DAVIES 28.244	1	7 C. DAVIES 22.193
2	21 M. REITERBERG 7.055	2	81 J. TORRES 15.473	2	34 D. GIUGLIANO 33.390	2	1 J. REA 28.304	2	1 J. REA 22.224
3	1 J. REA 7.078	3	1 J. REA 15.529	3	66 T. SYKES 33.401	3	34 D. GIUGLIANO 28.419	3	66 T. SYKES 22.418
4	22 A. LOWES 7.091	4	66 T. SYKES 15.538	4	1 J. REA 33.419	4	66 T. SYKES 28.480	4	34 D. GIUGLIANO 22.500
5	32 L. SAVADORI 7.124	5	2 L. CAMIER 15.591	5	81 J. TORRES 33.484	5	32 L. SAVADORI 28.483	5	12 X. FORÉS 22.593
6	7 C. DAVIES 7.133	6	32 L. SAVADORI 15.607	6	2 L. CAMIER 33.579	6	2 L. CAMIER 28.506	6	32 L. SAVADORI 22.606
7	69 N. HAYDEN 7.136	7	34 D. GIUGLIANO 15.618	7	21 M. REITERBERG 33.748	7	60 M. VAN DER MAR 28.620	7	69 N. HAYDEN 22.606
8	151 M. BAIOTTO 7.136	8	21 M. REITERBERG 15.688	8	32 L. SAVADORI 33.766	8	69 N. HAYDEN 28.664	8	60 M. VAN DER MAR 22.616
9	34 D. GIUGLIANO 7.140	9	69 N. HAYDEN 15.688	9	12 X. FORÉS 33.831	9	21 M. REITERBERG 28.674	9	81 J. TORRES 22.624
10	12 X. FORÉS 7.141	10	151 M. BAIOTTO 15.722	10	22 A. LOWES 33.834	10	81 J. TORRES 28.681	10	2 L. CAMIER 22.624
11	25 J. BROOKES 7.161	11	60 M. VAN DER MAR 15.736	11	69 N. HAYDEN 33.851	11	12 X. FORÉS 28.747	11	21 M. REITERBERG 22.630
12	60 M. VAN DER MAR 7.170	12	22 A. LOWES 15.737	12	151 M. BAIOTTO 33.871	12	151 M. BAIOTTO 28.811	12	22 A. LOWES 22.646
13	15 A. DE ANGELIS 7.173	13	12 X. FORÉS 15.742	13	60 M. VAN DER MAR 33.893	13	22 A. LOWES 28.813	13	25 J. BROOKES 22.648
14	2 L. CAMIER 7.173	14	25 J. BROOKES 15.826	14	25 J. BROOKES 34.127	14	25 J. BROOKES 28.912	14	151 M. BAIOTTO 22.667
15	81 J. TORRES 7.176	15	15 A. DE ANGELIS 15.827	15	15 A. DE ANGELIS 34.149	15	15 A. DE ANGELIS 29.152	15	15 A. DE ANGELIS 22.967
16	17 K. ABRAHAM 7.260	16	17 K. ABRAHAM 15.993	16	17 K. ABRAHAM 34.307	16	17 K. ABRAHAM 29.509	16	17 K. ABRAHAM 23.126
17	16 J. HOOK 7.360	17	16 J. HOOK 16.376	17	11 S. AL SULAITI 35.298	17	16 J. HOOK 29.841	17	16 J. HOOK 23.282
18	11 S. AL SULAITI 7.411	18	11 S. AL SULAITI 16.410	18	16 J. HOOK 35.412	18	11 S. AL SULAITI 30.054	18	11 S. AL SULAITI 23.468
19	119 P. SZKOPEK 7.509	19	119 P. SZKOPEK 16.913	19	119 P. SZKOPEK 36.052	19	119 P. SZKOPEK 30.299	19	119 P. SZKOPEK 24.351



Imola Circuit 4.936 m

Italian Round, 29-30 April 1 May 2016 World Superbike - Chronological Analysis Race 1

Start at 13:12'23.632

1 / 3

Lap	Seg. 1	Seg. 2	Seg. 3	Seg. 4	Seg. 5	Lap Time	km/h	Local Time
1	7.342	15.916	33.316	28.441	22.251	1'47.266	220.6	13:14'10.898
2	7.183	15.490	33.429	28.421	22.193	1'46.716	286.0	13:15'57.614
3	7.152	15.462	33.459	28.244	22.383	1'46.700	287.5	13:17'44.314
4	7.157	15.592	33.577	28.449	22.366	1'47.141	286.0	13:19'31.455
5	7.180	15.547	33.601	28.408	22.317	1'47.053	286.0	13:21'18.508
6	7.133	15.516	33.688	28.450	22.513	1'47.300	287.5	13:23'05.808
7	7.184	15.712	33.623	28.504	22.318	1'47.341	286.8	13:24'53.149
8	7.143	15.597	33.574	28.565	22.458	1'47.337	287.5	13:26'40.486
9	7.214	15.493	33.483	28.444	22.427	1'47.061	286.8	13:28'27.547
10	7.239	15.530	33.581	28.692	22.457	1'47.499	286.0	13:30'15.046
11	7.197	15.571	33.716	28.682	22.545	1'47.711	286.8	13:32'02.757
12	7.195	15.568	33.714	28.526	22.380	1'47.383	288.3	13:33'50.140
13	7.135	15.583	33.832	28.595	22.472	1'47.617	289.1	13:35'37.757
14	7.222	15.655	33.841	28.709	22.472	1'47.899	287.5	13:37'25.656
15	7.185	15.681	33.732	28.710	22.693	1'48.001	287.5	13:39'13.657
16	7.192	15.666	33.890	28.841	22.539	1'48.128	287.5	13:41'01.785
17	7.156	15.707	34.043	28.979	22.774	1'48.659	286.8	13:42'50.444
18	7.199	15.824	34.153	29.036	22.975	1'49.187	287.5	13:44'39.631

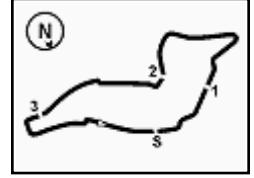
Lap	Seg. 1	Seg. 2	Seg. 3	Seg. 4	Seg. 5	Lap Time	km/h	Local Time
1	7.494	16.436	33.799	28.545	22.508	1'48.782	220.6	13:14'12.414
2	7.169	15.674	33.390	28.419	22.500	1'47.152	286.8	13:15'59.566
3	7.152	15.713	33.546	28.765	22.522	1'47.698	288.3	13:17'47.264
4	7.140	15.670	33.990	28.921	22.749	1'48.470	287.5	13:19'35.734
5	7.214	15.673	33.637	28.953	22.623	1'48.100	285.2	13:21'23.834
6	7.210	15.675	33.888	28.953	22.771	1'48.497	285.2	13:23'12.331
7	7.200	15.675	33.736	29.059	22.534	1'48.204	284.5	13:25'00.535
8	7.196	15.668	33.960	29.028	22.566	1'48.418	285.2	13:26'48.953
9	7.222	15.623	33.856	29.059	22.662	1'48.422	284.5	13:28'37.375
10	7.204	15.633	33.840	28.961	22.538	1'48.176	285.2	13:30'25.551
11	7.195	15.618	33.753	28.822	22.580	1'47.968	285.2	13:32'13.519
12	7.230	16.614	34.697	28.936	22.884	1'50.361	283.7	13:34'03.880
13	7.188	15.783	34.102	29.198	22.871	1'49.142	286.0	13:35'53.022
14	7.212	15.861	33.930	29.091	22.926	1'49.200	284.5	13:37'42.042
15	7.215	15.846	33.989	28.872	22.709	1'48.631	284.5	13:39'30.673
16	7.202	15.723	33.902	28.832	22.834	1'48.493	286.0	13:41'19.166
17	7.233	15.725	34.234	29.552	23.111	1'49.855	283.7	13:43'09.021
18	7.263	16.021	34.455	29.622	23.197	1'50.558	283.7	13:44'59.579

Lap	Seg. 1	Seg. 2	Seg. 3	Seg. 4	Seg. 5	Lap Time	km/h	Local Time
1	7.432	16.065	33.547	28.503	22.332	1'47.879	220.6	13:14'11.511
2	7.143	15.687	33.419	28.352	22.315	1'46.916	290.6	13:15'58.427
3	7.108	15.646	33.563	28.304	22.224	1'46.845	291.4	13:17'45.272
4	7.156	15.615	33.524	28.398	22.342	1'47.035	289.8	13:19'32.307
5	7.131	15.711	33.546	28.410	22.325	1'47.123	291.4	13:21'19.430
6	7.078	15.529	33.468	28.602	22.324	1'47.001	291.4	13:23'06.341
7	7.128	15.695	33.588	28.610	22.430	1'47.451	292.2	13:24'53.882
8	7.143	15.615	33.525	28.617	22.409	1'47.309	290.6	13:26'41.191
9	7.171	15.721	36.711	28.687	22.527	1'50.817	290.6	13:28'32.008
10	7.244	15.788	33.892	28.756	22.383	1'48.063	287.5	13:30'20.071
11	7.140	15.725	33.814	28.671	22.446	1'47.796	289.8	13:32'07.867
12	7.183	15.710	33.979	28.638	22.341	1'47.851	289.8	13:33'55.718
13	7.189	15.689	33.880	28.471	22.458	1'47.687	288.3	13:35'43.405
14	7.194	15.745	33.959	28.558	22.397	1'47.853	289.1	13:37'31.258
15	7.159	15.758	33.923	28.615	22.381	1'47.836	289.1	13:39'19.094
16	7.136	15.882	33.942	28.652	22.380	1'47.992	291.4	13:41'07.086
17	7.155	15.812	33.923	28.644	22.422	1'47.956	288.3	13:42'55.042
18	7.099	15.746	34.042	28.628	22.480	1'47.995	292.2	13:44'43.037

Lap	Seg. 1	Seg. 2	Seg. 3	Seg. 4	Seg. 5	Lap Time	km/h	Local Time
1	7.901	17.015	34.332	28.724	22.842	1'50.814	221.5	13:14'14.446
2	7.269	15.684	33.579	28.620	22.758	1'47.910	284.5	13:16'02.356
3	7.211	15.643	33.598	28.625	22.774	1'47.851	289.1	13:17'50.207
4	7.248	15.718	33.697	28.678	22.693	1'48.034	284.5	13:19'38.241
5	7.177	15.638	33.638	28.691	22.942	1'48.086	285.2	13:21'26.327
6	7.181	15.753	34.002	28.622	22.811	1'48.369	286.8	13:23'14.696
7	7.212	15.805	33.685	28.750	22.705	1'48.157	286.8	13:25'02.853
8	7.239	15.623	33.694	28.757	22.718	1'48.031	286.0	13:26'50.884
9	7.174	15.699	34.170	28.775	22.741	1'48.559	285.2	13:28'39.443
10	7.224	15.658	34.002	28.724	22.723	1'48.331	285.2	13:30'27.774
11	7.194	15.591	33.652	28.506	23.083	1'48.026	286.0	13:32'15.800
12	7.351	15.592	33.756	28.824	22.871	1'48.394	283.0	13:34'04.194
13	7.173	15.695	34.022	28.780	22.624	1'48.294	288.3	13:35'52.488
14	7.238	15.660	33.825	28.550	23.275	1'48.548	284.5	13:37'41.036
15	7.364	15.712	33.863	28.643	22.760	1'48.342	282.3	13:39'29.378
16	7.254	15.595	33.752	32.842	28.729	1'58.172	285.2	13:41'27.550
17	7.494	16.167	33.944	28.845	22.872	1'49.322	275.8	13:43'16.872
18	7.199	15.653	33.915	28.723	22.855	1'48.345	286.8	13:45'05.217

Lap	Seg. 1	Seg. 2	Seg. 3	Seg. 4	Seg. 5	Lap Time	km/h	Local Time
1	7.558	16.197	33.746	28.491	22.418	1'48.410	221.5	13:14'12.042
2	7.090	15.600	33.401	28.502	22.510	1'47.103	288.3	13:15'59.145
3	7.117	15.574	33.567	28.521	22.492	1'47.271	289.1	13:17'46.416
4	7.153	15.613	33.526	28.581	22.459	1'47.332	287.5	13:19'33.748
5	7.152	15.632	33.646	28.543	22.567	1'47.540	286.8	13:21'21.288
6	7.162	15.538	33.704	28.744	22.421	1'47.569	286.8	13:23'08.657
7	7.178	15.801	33.543	28.656	22.611	1'47.789	285.2	13:24'56.846
8	7.136	15.630	33.700	28.834	22.496	1'47.796	287.5	13:26'44.442
9	7.200	15.646	33.932	28.586	22.580	1'47.944	285.2	13:28'32.386
10	7.174	15.769	33.875	28.793	22.712	1'48.323	285.2	13:30'20.709
11	7.158	15.643	34.059	28.673	22.524	1'48.057	286.8	13:32'08.766
12	7.134	15.680	33.937	28.553	22.497	1'47.801	289.1	13:33'56.567
13	7.149	15.632	33.776	28.480	22.556	1'47.593	286.8	13:35'44.160
14	7.139	15.614	33.748	28.624	22.528	1'47.653	288.3	13:37'31.813
15	7.097	15.668	33.908	28.579	22.495	1'47.747	288.3	13:39'19.560
16	7.045	15.805	33.976	28.644	22.487	1'47.957	289.8	13:41'07.517
17	7.112	15.789	33.899	28.587	22.574	1'47.961	292.2	13:42'55.478
18	7.084	15.719	33.911	28.634	22.534	1'47.882	290.6	13:44'43.360

Lap	Seg. 1	Seg. 2	Seg. 3	Seg. 4	Seg. 5	Lap Time	km/h	Local Time
1	7.874	17.212	34.433	28.959	22.941	1'51.419	223.8	13:14'15.051
2	7.170	16.416	33.909	28.620	22.794	1'48.909	290.6	13:16'03.960
3	7.230	15.751	33.962	28.913	22.791	1'48.647	283.7	13:17'52.607
4	7.316	15.881	33.993	29.000	22.721	1'48.911	285.2	13:19'41.518
5	7.260	15.870	33.893	28.978	22.709	1'48.710	280.8	13:21'30.228
6	7.233	15.811	33.981	29.200	22.706	1'48.931	284.5	13:23'19.159
7	7.264	15.843	34.022	29.241	22.777	1'49.147	284.5	13:25'08.306
8	7.248	15.881	34.150	28.793	22.621	1'48.693	283.7	13:26'56.999
9	7.224	15.736	34.040	29.085	22.663	1'48.748	286.8	13:28'45.747
10	7.241	15.834	34.234	29.300	22.815	1'49.424	283.7	13:30'35.171
11	7.190	15.884	34.272	29.008	22.672	1'49.026	287.5	13:32'24.197
12	7.303	15.771	34.073	29.137	22.653	1'48.937	286.0	13:34'13.134
13	7.236	15.837	34.175	29.074	22.823	1'49.145	284.5	13:36'02.279
14	7.314	15.859	34.048	28.879	22.734	1'48.834	283.0	13:37'51.113
15	7.298	15.796	34.196	28.946	22.7			



Imola Circuit 4.936 m

Italian Round, 29-30 April 1 May 2016 World Superbike - Chronological Analysis Race 1

Start at 13:12'23.632

2 / 3

69 N. HAYDEN (1'48.154)								
Lap	Seg. 1	Seg. 2	Seg. 3	Seg. 4	Seg. 5	Lap Time	km/h	Local Time
1	7.836	16.947	34.258	29.183	23.088	1'51.312	225.2	13:14'14.944
2	7.230	15.748	33.924	28.672	22.673	1'48.247	287.5	13:16'03.191
3	7.136	15.721	34.168	28.664	22.641	1'48.330	287.5	13:17'51.521
4	7.158	15.692	33.990	28.708	22.606	1'48.154	286.8	13:19'39.675
5	7.167	15.727	33.982	28.679	22.952	1'48.507	284.5	13:21'28.182
6	7.176	15.830	34.039	28.723	22.623	1'48.391	280.8	13:23'16.573
7	7.222	15.753	33.851	28.971	23.035	1'48.832	287.5	13:25'05.405
8	7.919	16.185	34.378	29.134	22.884	1'50.500	265.6	13:26'55.905
9	7.189	15.855	34.412	29.285	22.836	1'49.577	285.2	13:28'45.482
10	7.169	15.836	34.288	29.321	22.876	1'49.900	283.0	13:30'34.972
11	7.277	15.828	34.221	28.866	22.822	1'49.014	283.7	13:32'23.986
12	7.201	15.768	34.186	29.002	22.772	1'48.929	286.0	13:34'12.915
13	7.271	15.818	34.204	28.840	22.667	1'48.800	285.2	13:36'01.715
14	7.310	15.688	34.132	28.843	23.002	1'48.975	283.0	13:37'50.690
15	7.253	15.893	34.327	28.901	22.845	1'49.219	286.0	13:39'39.909
16	7.192	15.915	34.229	29.115	23.228	1'49.679	281.5	13:41'29.588
17	7.199	15.862	34.121	28.949	22.796	1'48.927	288.3	13:43'18.515
18	7.172	16.006	34.653	29.312	23.236	1'50.379	286.0	13:45'08.894

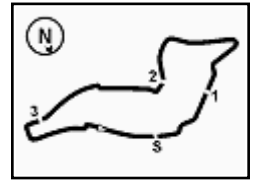
21 M. REITERBERGER (1'48.307)								
Lap	Seg. 1	Seg. 2	Seg. 3	Seg. 4	Seg. 5	Lap Time	km/h	Local Time
1	7.883	17.400	34.583	28.880	22.976	1'51.722	220.6	13:14'15.354
2	7.116	16.290	34.089	29.319	22.778	1'49.592	283.0	13:16'04.946
3	7.157	15.733	33.973	28.813	22.745	1'48.421	290.6	13:17'53.367
4	7.148	15.832	33.894	28.823	22.770	1'48.467	288.3	13:19'41.834
5	7.150	15.802	33.947	29.013	23.004	1'48.916	288.3	13:21'30.750
6	7.278	15.902	34.116	28.674	24.316	1'50.286	288.3	13:23'21.036
7	7.628	16.346	33.778	28.970	22.745	1'49.467	276.5	13:25'10.503
8	7.144	15.950	33.983	28.942	22.808	1'48.827	286.0	13:26'59.330
9	7.247	15.772	33.748	28.910	22.630	1'48.307	289.8	13:28'47.637
10	7.122	15.688	33.922	29.161	22.828	1'48.721	287.5	13:30'36.368
11	7.055	15.893	34.095	29.083	27.459	1'53.585	281.5	13:32'29.943
12	7.343	16.306	34.349	29.132	22.868	1'49.998	284.5	13:34'19.941
13	7.250	15.793	34.328	28.880	22.700	1'48.951	286.8	13:36'08.892
14	7.279	15.807	34.010	29.006	22.744	1'48.846	287.5	13:37'57.388
15	7.269	15.778	33.894	28.966	22.724	1'48.631	287.5	13:39'46.369
16	7.227	15.832	34.016	29.205	22.871	1'49.151	286.0	13:41'35.000
17	7.155	15.840	34.342	29.030	23.116	1'49.483	288.3	13:43'25.023
18	7.239	15.815	34.127	28.997	23.117	1'49.295	286.8	13:45'14.298

12 X. FORÉS (1'48.623)								
Lap	Seg. 1	Seg. 2	Seg. 3	Seg. 4	Seg. 5	Lap Time	km/h	Local Time
1	8.168	17.326	34.915	29.246	23.125	1'52.780	227.6	13:14'16.412
2	7.195	15.850	34.065	29.039	23.125	1'49.274	281.5	13:16'05.686
3	7.149	15.944	34.072	28.901	22.689	1'48.755	280.1	13:17'54.441
4	7.172	15.858	33.941	28.872	22.808	1'48.651	286.8	13:19'43.092
5	7.204	15.836	33.947	29.381	22.768	1'49.136	281.5	13:21'32.228
6	7.195	15.779	34.006	29.068	22.855	1'48.903	286.0	13:23'21.131
7	7.244	15.780	33.922	29.106	22.759	1'48.814	285.4	13:25'09.942
8	7.193	15.821	33.999	29.017	22.593	1'48.623	284.5	13:26'58.565
9	7.186	16.054	33.831	28.887	22.739	1'48.697	287.5	13:28'47.262
10	7.189	15.742	33.928	29.090	22.988	1'48.937	286.8	13:30'36.199
11	7.157	16.117	34.258	29.135	22.897	1'49.564	281.5	13:32'25.763
12	7.190	15.811	34.308	29.129	22.681	1'49.119	283.0	13:34'14.882
13	7.174	15.817	34.048	28.959	22.741	1'48.739	287.5	13:36'03.621
14	7.221	15.813	33.996	28.935	22.823	1'48.788	286.8	13:37'52.409
15	7.164	15.892	34.066	28.920	22.737	1'48.779	286.8	13:39'41.188
16	7.169	15.899	34.112	29.079	23.023	1'49.282	281.5	13:41'30.470
17	7.190	15.962	34.070	28.747	23.465	1'49.434	275.1	13:43'19.904
18	7.141	15.773	34.247	29.009	22.983	1'49.153	286.0	13:45'09.057

25 J. BROOKES (1'49.080)								
Lap	Seg. 1	Seg. 2	Seg. 3	Seg. 4	Seg. 5	Lap Time	km/h	Local Time
1	8.309	17.655	35.373	29.394	23.240	1'53.971	226.2	13:14'17.603
2	7.259	16.298	34.345	29.178	23.138	1'50.218	286.8	13:16'07.821
3	7.169	16.166	34.204	28.937	23.004	1'49.480	286.8	13:17'57.301
4	7.187	15.826	34.227	29.049	22.839	1'49.128	288.3	13:19'46.429
5	7.195	15.993	34.127	29.170	22.819	1'49.304	287.5	13:21'35.733
6	7.206	15.857	34.262	28.977	22.855	1'49.157	288.3	13:23'24.950
7	7.278	15.961	34.256	29.048	22.824	1'49.367	286.8	13:25'14.261
8	7.192	15.901	34.439	28.962	22.907	1'49.401	286.0	13:27'03.658
9	7.201	15.995	34.156	29.090	22.648	1'49.090	285.2	13:28'52.748
10	7.230	15.854	34.345	29.102	22.945	1'49.476	286.8	13:30'42.224
11	7.196	15.991	34.348	28.946	23.045	1'49.526	286.0	13:32'31.750
12	7.181	16.049	34.701	28.912	22.973	1'49.816	290.6	13:34'21.566
13	7.227	15.992	34.335	29.125	22.838	1'49.517	286.0	13:36'11.083
14	7.223	15.901	34.185	28.994	22.777	1'49.080	286.8	13:38'00.163
15	7.183	15.868	34.363	29.192	22.853	1'49.459	287.5	13:39'49.622
16	7.211	15.907	34.212	29.092	22.800	1'49.222	287.5	13:41'38.844
17	7.161	15.994	34.643	29.210	22.834	1'49.842	288.3	13:43'28.686
18	7.184	16.075	36.301	36.116	32.319	2'07.995	286.0	13:45'36.681

22 A. LOWES (1'48.535)								
Lap	Seg. 1	Seg. 2	Seg. 3	Seg. 4	Seg. 5	Lap Time	km/h	Local Time
1	8.115	17.260	34.813	29.162	23.049	1'52.399	233.5	13:14'16.031
2	7.162	15.905	34.098	29.076	23.058	1'49.299	285.2	13:16'05.330
3	7.172	15.802	33.958	28.894	22.712	1'48.538	283.7	13:17'53.868
4	7.158	15.810	34.076	28.837	22.866	1'48.747	289.1	13:19'42.615
5	7.146	15.840	33.881	28.920	22.832	1'48.619	282.3	13:21'31.234
6	7.130	15.904	34.158	28.872	23.306	1'49.370	277.2	13:23'20.604
7	7.279	15.737	33.834	29.022	22.767	1'48.639	285.2	13:25'09.243
8	7.165	15.970	34.071	28.813	22.646	1'48.665	280.1	13:26'57.908
9	7.150	15.792	33.977	28.915	22.701	1'48.535	284.5	13:28'46.443
10	7.189	15.896	34.106	29.235	22.989	1'49.115	282.3	13:30'35.858
11	7.097	16.032	34.260	29.193	22.949	1'49.531	277.9	13:32'25.389
12	7.130	15.842	34.135	28.837	22.921	1'48.865	280.3	13:34'14.254
13	7.183	15.863	33.960	29.028	22.759	1'48.793	281.5	13:36'03.047
14	7.091	15.850	34.088	29.120	22.753	1'48.902	283.7	13:37'51.949
15	7.103	15.864	34.198	28.933	22.737	1'48.835	286.0	13:39'40.784
16	7.124	16.069	34.194	29.052	22.906	1'49.345	267.6	13:41'30.129
17	7.149	16.077	34.077	29.239	22.928	1'49.470	268.9	13:43'19.599
18	7.184	15.860	34.208	28.855	23.547	1'49.654	275.1	13:45'09.253

15 A. DE ANGELIS (1'49.468)								
Lap	Seg. 1	Seg. 2	Seg. 3	Seg. 4	Seg. 5	Lap Time	km/h	Local Time
1	8.366	17.504	35.049	29.384	23.153	1'53.456	235.0	13:14'17.088
2	7.242	16.117	34.165	29.334	23.280	1'50.138	281.5	13:16'07.226
3	7.221	16.021	34.149	29.188	23.140	1'49.719	287.5	13:17'56.945
4	7.193	15.827	34.267	29.661	23.239	1'50.187	289.1	13:19'47.132
5	7.216	15.972	34.185	29.214	22.967	1'49.554	285.2	13:21'36.686
6	7.173	15.971	34.198	29.152	22.974	1'49.468	288.3	13:23'26.154
7	7.236	16.003	34.362	31.706	23.426	1'52.733	283.7	13:25'18.887
8	7.218	16.080	34.681	29.436	23.083	1'50.498	283.0	13:27'09.385
9	7.203	16.034	34.746	29.805	23.301	1'51.089	285.2	13:29'00.474
10	7.295	16.130	34.623	29.481	23.364	1'50.893	277.2	13:30'51.367
11	7.198	16.149	34.594	29.502	23.303	1'50.746	288.3	13:32'42.113
12	7.323	16.128	34.802	29.711	23.303	1'51.267	283.0	13:34'33.880
13	7.230	16.066	34.577	29.588	23.174	1'50.635	284.5	13:36'24.015
14	7.357	15.970	34.528	29.466	23.223	1'50.544	284.5	13:38'14.559
15	7.279	16.007	34.621	29.598	23.333	1'50.838	282.3	13:40'05.397



Imola Circuit 4.936 m

Italian Round, 29-30 April 1 May 2016 World Superbike - Chronological Analysis Race 1

Start at 13:12'23.632

16 J. HOOK (1'52.792)

Lap	Seg. 1	Seg. 2	Seg. 3	Seg. 4	Seg. 5	Lap Time	km/h	Local Time
1	8.589	17.745	36.029	30.222	23.626	1'56.211	233.0	13:14'19.843
2	7.399	17.007	35.763	30.210	23.466	1'53.845	279.3	13:16'13.688
3	7.386	16.470	35.670	29.984	23.282	1'52.792	277.9	13:18'06.480
4	7.360	16.376	35.478	30.247	23.393	1'52.854	278.6	13:19'59.334
5	7.498	16.791	35.556	29.850	23.378	1'53.073	273.0	13:21'52.407
6	7.386	16.596	35.412	30.160	23.546	1'53.100	275.1	13:23'45.507
7	7.424	16.693	35.424	30.018	23.400	1'52.959	275.8	13:25'38.466
8	7.398	16.398	35.416	30.032	23.574	1'52.818	276.5	13:27'31.284
9	7.407	16.594	35.546	29.841	23.514	1'52.902	275.8	13:29'24.186
10	7.400	16.484	35.460	30.253	23.644	1'53.241	276.5	13:31'17.427
11	7.400	16.542	35.795	30.027	23.827	1'53.591	279.3	13:33'11.018
12	7.400	16.673	35.644	30.015	23.434	1'53.166	276.5	13:35'04.184
13	7.390	16.516	35.623	29.969	23.499	1'52.997	276.5	13:36'57.181
14	7.383	16.448	35.760	30.145	23.638	1'53.374	275.8	13:38'50.555
15	7.385	16.721	35.726	30.394	23.687	1'53.913	275.1	13:40'44.468
16	7.421	16.883	36.185	30.231	23.696	1'54.416	273.7	13:42'38.884
17	7.372	16.812	35.764	29.939	23.575	1'53.462	275.1	13:44'32.346
18	7.434	17.527	36.909	31.373	24.838	1'58.081	264.3	13:46'30.427

119 P. SZKOPEK (1'56.225)

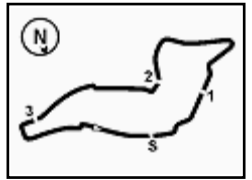
Lap	Seg. 1	Seg. 2	Seg. 3	Seg. 4	Seg. 5	Lap Time	km/h	Local Time
1	8.725	17.794	36.052	30.299	25.251	1'58.121	228.6	13:14'21.753
2	7.586	17.040	36.563	34.623	24.351	2'00.163	265.6	13:16'21.916
3	7.584	17.089	36.147	30.704	24.701	1'56.225	268.9	13:18'18.141
4	7.694	17.876	37.375	31.228	1'08.120	2'42.293 P	255.6	13:21'00.434
5	6.839	18.731	39.175	31.571	25.695	2'02.011 P	194.1	13:23'02.445
6	8.633	22.753	41.722	33.943	26.091	2'13.142	196.2	13:25'15.587
7	7.804	17.328	37.947	31.763	25.053	1'59.895	268.9	13:27'15.482
8	7.629	17.327	38.086	32.625	25.308	2'00.975	270.3	13:29'16.457
9	7.624	17.325	37.720	31.444	24.905	1'59.018	259.3	13:31'15.475
10	7.673	17.271	38.735	32.063	24.988	2'00.730	261.8	13:33'16.205
11	7.803	17.407	37.402	31.501	24.953	1'59.066	253.2	13:35'15.271
12	7.845	17.458	37.244	31.471	25.477	1'59.495	263.7	13:37'14.766
13	7.707	16.913	37.269	31.636	26.883	2'00.408	267.6	13:39'15.174
14	7.509	17.549	39.388	31.900	26.524	2'02.870	274.4	13:41'18.044
15	9.021	17.540	38.344	36.248	25.855	2'07.008	246.3	13:43'25.052
16	8.048	17.479	39.078	32.445	26.125	2'03.175	263.7	13:45'28.227

11 S. AL SULAITI (1'52.928)

Lap	Seg. 1	Seg. 2	Seg. 3	Seg. 4	Seg. 5	Lap Time	km/h	Local Time
1	8.872	17.969	35.995	30.266	25.891	1'58.993	218.4	13:14'22.625
2	7.500	16.777	35.699	30.385	23.638	1'53.999	275.1	13:16'16.624
3	7.411	16.729	35.590	30.129	23.535	1'53.394	271.6	13:18'10.018
4	7.560	16.560	35.556	30.126	23.468	1'53.270	271.6	13:20'03.288
5	7.434	16.576	35.298	30.054	23.566	1'52.928	273.7	13:21'56.216
6	7.513	16.694	35.463	30.215	23.581	1'53.466	271.6	13:23'49.682
7	7.552	16.410	35.390	30.148	23.743	1'53.243	270.3	13:25'42.925

P = Pits In/Out - C = Lap-Time Cancelled



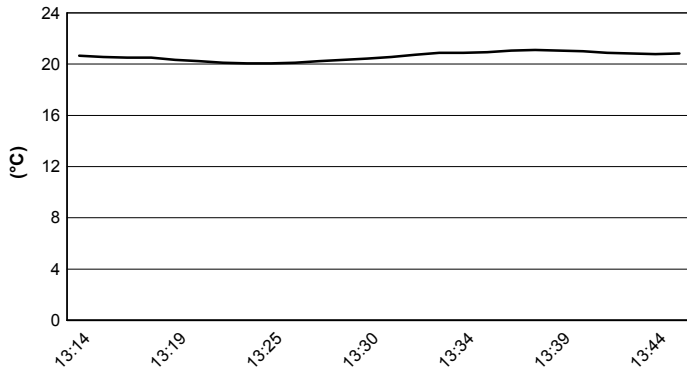


Imola Circuit 4.936 m

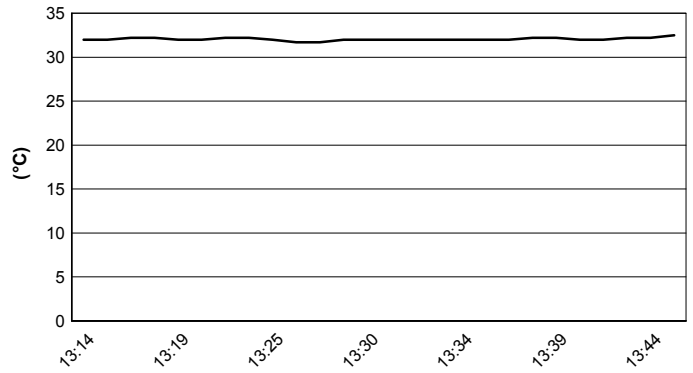
Italian Round, 29-30 April 1 May 2016 World Superbike - Weather Report Race 1

Session started 13:12 Session ended 13:46

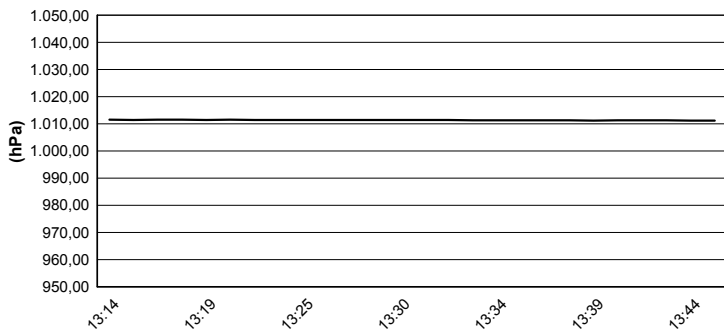
Air Temperature



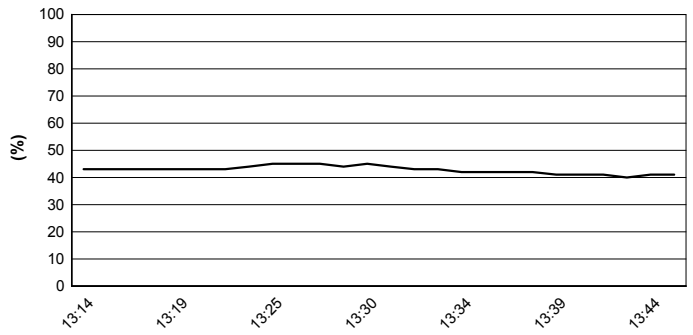
Track Temperature



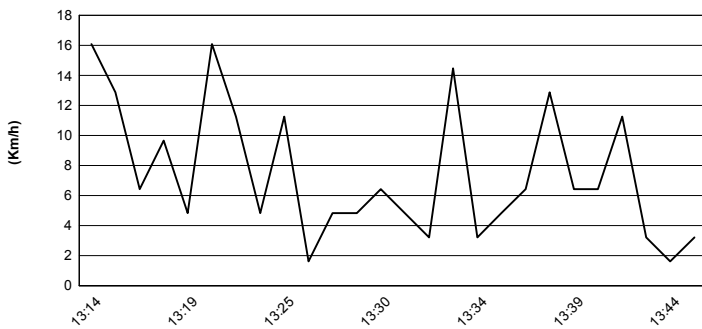
Air Pressure



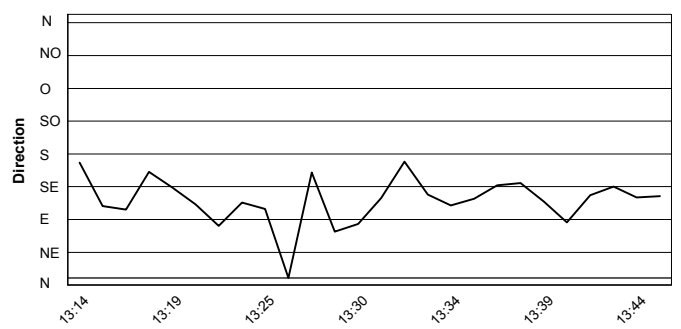
Humidity

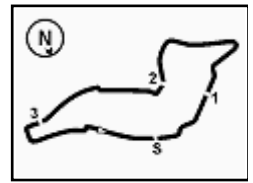


Wind Speed



Wind Direction





Imola Circuit 4.936 m

Italian Round, 29-30 April 1 May 2016 World Superbike - Championship Standings

Points	Points From First	Points From Previous	February 28		March 13		April 3		April 17		May 1		May 15		May 29		June 19		July 10		September 18		October 2		October 16		October 28	
			PHILLIP ISLAND	BURIRAM	ARAGON	ASSEN	IMOLA	SEPANG	DONINGTON PARK	MISANO	LAGUNA SECA	LAUSITZRING	MAGNY-COURS	JEREZ	LOSAIL													
1 REA Jonathan (GBR)	201		25 25	25 20	20 16	25 25	20	25 25	20																			
2 DAVIES Chaz (GBR)	161 40		1 1	1 1	1 1	1 1	1 1	1 1	1																			
3 SYKES Tom (GBR)	138 63 23		11 10	20 25	16 20	20	16	20	16																			
4 VAN DER MARK Michael (NED)	99 102 39		16 20	16 13	9	16	9																					
5 TORRES Jordi (ESP)	78 123 21		8 9	8 8	9 11	11	1	13																				
6 GIUGLIANO Davide (ITA)	75 126 3		13 16	6	11 10	8	11																					
7 HAYDEN Nicky (USA)	74 127 1		7 13	11	10	16	10	7																				
8 SAVADORI Lorenzo (ITA)	59 142 15		4	6 7	6 5	10 13	8																					
9 GUINTOLI Sylvain (FRA)	58 143 1		10 11	9 10	7 6	5																						
10 CAMIER Leon (GBR)	49 152 9		9	5 5	13 16	13	7	10																				
11 LOWES Alex (GBR)	49 152 0		2	10	8 7	8 9	5																					
12 FORÉS Xavi (ESP)	43 158 6			2	13 13	3 6	6																					
13 REITERBERGER Markus (GER)	43 158 0		8	11 9	2 1	9	3																					
14 RAMOS Román (ESP)	36 165 7		5 4	4 4	4 4	7 4																						
15 DE ANGELIS Alex (RSM)	30 171 6		3	7 2	5 8	4	1																					
16 BROOKES Joshua (AUS)	27 174 3		6 7	1	3 3	5	2																					
17 ABRAHAM Karel (CZE)	14 187 13		3 5	1	1 2	2	2																					
18 BAIOTTO Matteo (ITA)	12 189 2			3 3	2	4																						
19 MAHIAS Lucas (FRA)	9 192 3				6 3	19	18	19																				
20 JONES Mike (AUS)	2 199 7		2																									
21 BARRIER Sylvain (FRA)	2 199 0		1 1																									
22 LUSSIANA Matthieu (FRA)	1 200 1																											

First Line: Championship Standings - Second Line: Ranking Progression

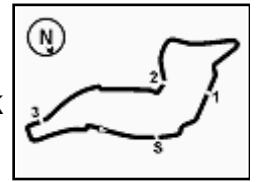
FICR PEROGIA TINING



Official Tyre Supplier



Official Timekeeper



Imola Circuit 4.936 m

Italian Round, 29-30 April 1 May 2016 World Superbike - Manufacturers Standings

	Points	Points From First	Points From Previous	February 28 PHILLIP ISLAND		March 13 BURIRAM		April 3 ARAGON		April 17 ASSEN		May 1 IMOLA		May 15 SEPANG		May 29 DONINGTON PARK		June 19 MISANO		July 10 LAGUNA SECA		September 18 LAUSITZRING		October 2 MAGNY-COURS		October 16 JEREZ		October 28 LOSAIL	
				1	2	1	2	1	2	1	2	1	2	1	2	1	2	1	2	1	2	1	2	1	2	1	2	1	2
1 KAWASAKI	210			25	25	25	25	20	20	25	25	20	20																
2 DUCATI	171	39		20	16	13	16	25	25	20	11	25	2																
3 HONDA	125	85	46	16	20	16	13	10	9	16	16	9	3																
4 BMW	83	127	42	8	9	11	9	9	11	11	2	13	4																
5 YAMAHA	78	132	5	10	11	10	10	8	7	8	9	5	5																
6 APRILIA	66	144	12	4	3	7	7	6	8	10	13	8	6																
7 MV AGUSTA	49	161	17	9	5	5	5	7	7	13	7	10	7																

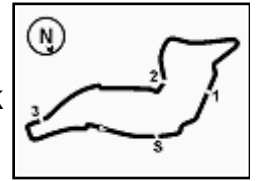
First Line: Championship Standings - Second Line: Ranking Progression

PIRELLI PEROGIA TURING


Official Tyre Supplier



Official Timekeeper



Imola Circuit 4.936 m

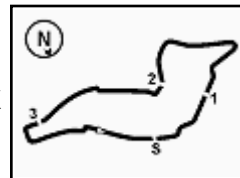
Italian Round, 29-30 April 1 May 2016 World Superbike - Pirelli Best Lap Award

Points	Points From First	Points From Previous	Fastest Laps														
			February 28 PHILLIP ISLAND	March 13 BURIRAM	April 3 ARAGON	April 17 ASSEN	May 1 IMOLA	May 15 SEPANG	May 29 DONINGTON PARK	June 19 MISANO	July 10 LAGUNA SECA	September 18 LAUSITZRING	October 2 MAGNY-COURS	October 16 JEREZ	October 28 LOSAIL		
1 DAVIES Chaz (GBR)	5		1		1	1	1	1									
2 REA Jonathan (GBR)	3	2		1	1		1										
3 GIUGLIANO Davide (ITA)	1	4	2	1													

Italian Round, 29-30 April 1 May 2016 World Superbike - Best Laps & Speeds

1 / 2

No.	Rider	Nat	Bike	Best Lap		FP1		FP2		FP3		SP1		SP2		RC1		
				laps	speed	laps	speed	laps	speed	laps	speed	laps	speed	laps	speed	laps	speed	
1	7 DAVIES Chaz	GBR	Ducati Panigale R	1'45.598	289	1'47.441	24	1'47.014	23	1'46.869	288	9	288	1'45.598	289	18	289	289
2	34 GIUGLIANO Davide	ITA	Ducati Panigale R	1'46.055	288	1'48.384	23	1'48.682	18	1'47.705	284	9	284	1'46.055	288	18	288	288
3	1 REA Jonathan	GBR	Kawasaki ZX-10R	1'46.328	292	1'48.284	20	1'47.444	22	1'47.662	290	9	290	1'46.328	291	18	292	292
4	66 SYKES Tom	GBR	Kawasaki ZX-10R	1'46.331	292	1'48.691	20	1'47.347	13	1'47.405	285	7	289	1'46.331	288	18	292	292
5	32 SAVADORI Lorenzo	ITA	Aprilia RSV4 RF	1'46.531	290	1'48.242	22	1'48.520	19	1'48.473	290	8	288	1'46.531	290	18	290	290
6	81 TORRES Jordi	ESP	BMW S1000 RR	1'46.867	291	1'48.880	23	1'48.077	24	1'48.481	288	8	285	1'46.867	291	18	291	291
7	2 CAMIER Leon	GBR	MV Agusta 1000 F4	1'46.911	289	1'47.943	25	1'48.067	23	1'48.073	280	5	282	1'46.911	284	18	289	289
8	21 REITERBERGER Markus	GER	BMW S1000 RR	1'46.952	291	1'48.874	22	1'47.949	23	1'48.163	291	7	291	1'46.952	291	18	291	291
9	69 HAYDEN Nicky	USA	Honda CBR1000RR SP	1'47.429	288	1'49.587	24	1'49.364	20	1'48.760	283	9	287	1'47.757	1'47.429	18	288	288
10	151 BAIOTTO Matteo	ITA	Ducati Panigale R	1'47.471	287	1'48.547	22	1'48.519	16	1'49.532	283	7	282	1'47.471	282	18	287	287
11	60 VAN DER MARK Michael	NED	Honda CBR1000RR SP	1'47.563	291	1'49.166	20	1'49.416	19	1'48.792	284	9	284	1'47.602	1'47.563	18	291	291
12	12 FORÉS Xavi	ESP	Ducati Panigale R	1'47.811	288	1'52.373	4	1'48.778	16	1'48.718	286	8	286	1'47.811	286	18	288	288
13	22 LOWES Alex	GBR	Yamaha YZF R1	1'48.001	289	1'49.074	15	1'48.600	19	1'49.864	284	6	284	1'48.001	288	18	289	289
14	25 BROOKES Joshua	AUS	BMW S1000 RR	1'48.046	291	1'50.537	22	1'49.239	25	1'49.728	285	8	286	1'48.046	286	18	291	291
15	50 GUINTOLI Sylvain	FRA	Yamaha YZF R1	1'48.206	288	1'48.440	13	1'48.342	19	1'48.206	288	8	288	1'48.206	284	2	284	284
16	17 ABRAHAM Karel	CZE	BMW S1000 RR	1'49.167	287	1'50.893	24	1'52.712	5	1'49.236	286	8	285	1'49.167	285	18	287	287
17	15 DE ANGELIS Alex	RSM	Aprilia RSV4 RF	1'49.321	289	1'50.603	24	1'49.649	20	1'52.260	285	8	286	1'49.321	286	18	289	289
18	44 MAHIAS Lucas	FRA	Kawasaki ZX-10R	1'49.695	284	1'50.316	15	1'49.695	18	1'49.695	284	15	284	1'49.695	284	15	284	284
19	9 SCHMITTER Dominic	SUI	Kawasaki ZX-10R	1'49.857	278	1'53.192	12	1'51.062	23	1'51.695	275	8	275	1'49.857	278	8	278	278
20	56 SEBESTYÉN Péter	HUN	Yamaha YZF R1	1'49.916	277	1'53.104	22	1'51.564	19	1'51.631	275	7	276	1'49.916	277	7	276	276
21	119 SZKOPEK Pawel	POL	Yamaha YZF R1	1'51.020	277	1'52.200	22	1'52.808	20	1'52.251	276	7	276	1'51.020	277	16	274	274



Imola Circuit 4.936 m

No.	Rider		Best Lap		FP1		FP2		FP3		SP1		SP2		RC1	
	Nat	Bike	laps	speed	laps	speed	laps	speed	laps	speed	laps	speed	laps	speed	laps	speed
22	16 HOOK Josh		1'51.827		1'57.679		1'54.025		1'53.726		1'51.827				1'52.792	
	AUS	Kawasaki ZX-10R	54	279	9	270	12	275	7	276	8	279		18	279	
23	11 AL SULAITI Saeed		1'52.108		1'55.158		1'52.497		1'53.693		1'52.108				1'52.928	
	QAT	Kawasaki ZX-10R	60	275	19	268	19	272	8	274	7	274		7	275	
24	4 VIZZIELLO Gianluca		1'54.841						1'54.841							
	ITA	Kawasaki ZX-10R	5	276					5	276						

