

Imola Circuit 4.936 m

1 / 2

No.	Rider	Nat	Team	Bike	Time	Gap	Rel.	Laps	Speed	
									Avg	Max
1*	60 M. VAN DER MARK	NED	Honda World Superbike Team	Honda CBR1000RR SP	1'47.602			8	165,142	287,5
2*	69 N. HAYDEN	USA	Honda World Superbike Team	Honda CBR1000RR SP	1'47.757	0.155	0.155	8	164,904	288,3
3	12 X. FORÉS	ESP	Barni Racing Team	Ducati Panigale R	1'47.811	0.209	0.054	7	164,822	286,0
4	22 A. LOWES	GBR	Pata Yamaha Official WorldSBK Team	Yamaha YZF R1	1'48.001	0.399	0.190	6	164,532	287,5
5	25 J. BROOKES	AUS	Milwaukee BMW	BMW S1000 RR	1'48.046	0.444	0.045	8	164,463	286,0
6	17 K. ABRAHAM	CZE	Milwaukee BMW	BMW S1000 RR	1'49.167	1.565	1.121	8	162,774	285,2
7	15 A. DE ANGELIS	RSM	IodaRacing Team	Aprilia RSV4 RF	1'49.321	1.719	0.154	8	162,545	286,0
8	9 D. SCHMITTER	SUI	Grillini Racing Team	Kawasaki ZX-10R	1'49.857	2.255	0.536	8	161,752	277,9
9	56 P. SEBESTYÉN	HUN	Team Tóth	Yamaha YZF R1	1'49.916	2.314	0.059	7	161,665	276,5
10	119 P. SZKOPEK	POL	Team Tóth	Yamaha YZF R1	1'51.020	3.418	1.104	7	160,058	277,2
11	16 J. HOOK	AUS	Grillini Racing Team	Kawasaki ZX-10R	1'51.827	4.225	0.807	8	158,903	278,6
12	11 S. AL SULAITI	QAT	Pedercini Racing	Kawasaki ZX-10R	1'52.108	4.506	0.281	7	158,504	273,7
13	44 L. MAHIAS	FRA	Pedercini Racing	Kawasaki ZX-10R				0		

* Qualified to Superpole 2

AIR	Humidity:	60%	Temp:	17°C
TRACK	Condition:	Dry	Temp:	24°C

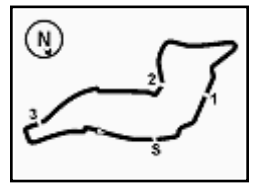
Lap Record:	2015 T.Sykes	1'46.707	166,530	Km/h
Best Lap:	2014 J.Rea	1'46.289	167,180	Km/h

30/04/2016 Start 10:30 End 10:47

The results are provisional until the end of the time limit for protests and appeals and the completion of the technical checks.

FCR PERGGIA TIMING





Italian Round, 29-30 April 1 May 2016 World Superbike - Results Superpole 1

Session Highlights

10.30.06		Start
10.41.10	De Angelis	Time Deleted - Cut Chicane
10.46.03	Abraham	Time Deleted - Cut Chicane
10.47.21		End Of Session

Fastest Laps Sequence

No.	Rider	Nat	Team	Bike	Local Time	Time	Gap	Avg
25	J. BROOKES	AUS	Milwaukee BMW	BMW S1000 RR	10:31'54.495	1'52.907		157,383
25	J. BROOKES	AUS	Milwaukee BMW	BMW S1000 RR	10:33'43.817	1'49.322	-3.585	162,544
12	X. FORÉS	ESP	Barni Racing Team	Ducati Panigale R	10:33'55.226	1'48.815	-0.507	163,301
12	X. FORÉS	ESP	Barni Racing Team	Ducati Panigale R	10:35'43.437	1'48.211	-0.604	164,213
69	N. HAYDEN	USA	Honda World Superbike Team	Honda CBR1000RR SP	10:42'20.541	1'47.757	-0.454	164,904
60	M. VAN DER MARK	NED	Honda World Superbike Team	Honda CBR1000RR SP	10:46'46.743	1'47.602	-0.155	165,142

30/04/2016 Start
10:30

End
10:47

The results are provisional until the end of the time limit for protests and appeals and the completion of the technical checks.

FCR PERDIA TIMING



Official Tyre Supplier



Official Timekeeper