

Riviera di Rimini Round, 17-18-19 June 2016

World Superbike - Results Superpole 1

Misano World Circuit 4.226 m

1 / 2

No.	Rider	Nat	Team	Bike	Time	Gap	Rel.	Laps	Speed	
									Avg	Max
1*	32 L. SAVADORI	ITA	IodaRacing Team	Aprilia RSV4 RF	1'35.678			3	159,008	267,3
2*	2 L. CAMIER	GBR	MV Agusta Reparto Corse	MV Agusta 1000 F4	1'35.696	0.018	0.018	6	158,978	260,9
3	13 A. WEST	AUS	Pedercini Racing	Kawasaki ZX-10R	1'35.765	0.087	0.069	7	158,864	266,7
4	40 R. RAMOS	ESP	Team GoEleven	Kawasaki ZX-10R	1'36.328	0.650	0.563	6	157,935	265,4
5	59 N. CANEPA	ITA	Pata Yamaha Official WorldSBK Team	Yamaha YZF R1	1'36.335	0.657	0.007	6	157,924	260,9
6	25 J. BROOKES	AUS	Milwaukee BMW	BMW S1000 RR	1'37.314	1.636	0.979	7	156,335	266,0
7	61 F. MENGHI	ITA	VFT Racing	Ducati Panigale R	1'38.143	2.465	0.829	7	155,015	260,2
8	9 D. SCHMITTER	SUI	Grillini Racing Team	Kawasaki ZX-10R	1'38.238	2.560	0.095	6	154,865	264,7
9	17 K. ABRAHAM	CZE	Milwaukee BMW	BMW S1000 RR	1'38.380	2.702	0.142	6	154,641	266,7
10	56 P. SEBESTYÉN	HUN	Team Tóth	Yamaha YZF R1	1'38.446	2.768	0.066	6	154,538	257,1
11	11 S. AL SULAITI	QAT	Pedercini Racing	Kawasaki ZX-10R	1'38.813	3.135	0.367	5	153,964	259,6
12	119 P. SZKOPEK	POL	Team Tóth	Yamaha YZF R1	1'38.975	3.297	0.162	7	153,712	259,6
13	4 G. VIZZIELLO	ITA	Grillini Racing Team	Kawasaki ZX-10R	1'39.171	3.493	0.196	7	153,408	258,4
14	15 A. DE ANGELIS	RSM	IodaRacing Team	Aprilia RSV4 RF	1'42.023	6.345	2.852	4	149,119	268,0

* Qualified to Superpole 2

AIR	Humidity:	43%	Temp:	25°C
TRACK	Condition:	Dry	Temp:	39°C

Lap Record: 0 .
Best Lap 0 .

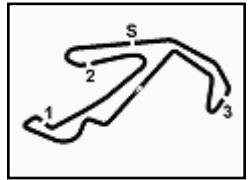
These data/results cannot be reproduced, stored and/or transmitted in whole or in part by any manner of electronic, mechanical, photocopying, recording, broadcasting or otherwise now known or herein after developed without the previous express consent by the copyright owner, except for reproduction in daily press and regular printed publications on sale to the public within 60 days of the event related to those data/results and always provided that copyright symbol appears together as follows below.

© DORNA WSBK ORGANIZATION Srl 2016

Start	End	The results are provisional until the end of the time limit for protests and appeals
18/06/2016 10:30	10:46	and the completion of the technical checks.

FCR PERGGIA TIMING





Riviera di Rimini Round, 17-18-19 June 2016

World Superbike - Results Superpole 1

Session Highlights

10.30.03		Start
10.44.15		RED FLAG
10.44.37	Al Sulaiti	Technical Problem - Turn 12
10.44.50		Session Ended
10.46.40		End Of Session

Fastest Laps Sequence

No.	Rider	Nat	Team	Bike	Local Time	Time	Gap	Avg
25	J. BROOKES	AUS	Milwaukee BMW	BMW S1000 RR	10:33'26.302	1'37.676		155,756
32	L. SAVADORI	ITA	IodaRacing Team	Aprilia RSV4 RF	10:33'49.764	1'36.773	-0.903	157,209
2	L. CAMIER	GBR	MV Agusta Reparto Corse	MV Agusta 1000 F4	10:34'11.783	1'35.696	-1.077	158,978
32	L. SAVADORI	ITA	IodaRacing Team	Aprilia RSV4 RF	10:35'25.442	1'35.678	-0.018	159,008

These data/results cannot be reproduced, stored and/or transmitted in whole or in part by any manner of electronic, mechanical, photocopying, recording, broadcasting or otherwise now known or herein after developed without the previous express consent by the copyright owner, except for reproduction in daily press and regular printed publications on sale to the public within 60 days of the event related to those data/results and always provided that copyright symbol appears together as follows below.

© DORNA WSBK ORGANIZATION Srl 2016

	Start	End	The results are provisional until the end of the time limit for protests and appeals
18/06/2016	10:30	10:46	and the completion of the technical checks.

FICR PEROGIA TIMING



Official Tyre Supplier



Official Timekeeper

Riviera di Rimini Round, 17-18-19 June 2016

World Superbike - Best Sector & Speed Superpole 1

Misano World Circuit 4.226 m

Best Lap

1	32 L. SAVADORI	Aprilia RSV4 RF	1'35.678
2	2 L. CAMIER	MV Agusta 1000 F4	1'35.696
3	13 A. WEST	Kawasaki ZX-10R	1'35.765
4	40 R. RAMOS	Kawasaki ZX-10R	1'36.328
5	59 N. CANEPA	Yamaha YZF R1	1'36.335
6	25 J. BROOKES	BMW S1000 RR	1'37.314
7	61 F. MENGHI	Ducati Panigale R	1'38.143
8	9 D. SCHMITTER	Kawasaki ZX-10R	1'38.238
9	17 K. ABRAHAM	BMW S1000 RR	1'38.380
10	56 P. SEBESTYÉN	Yamaha YZF R1	1'38.446
11	11 S. AL SULAITI	Kawasaki ZX-10R	1'38.813
12	119 P. SZKOPEK	Yamaha YZF R1	1'38.975
13	4 G. VIZZIELLO	Kawasaki ZX-10R	1'39.171
14	15 A. DE ANGELIS	Aprilia RSV4 RF	1'42.023

Best Sector & Speed

1	15 A. DE ANGELIS	Aprilia RSV4 RF	268.0
2	32 L. SAVADORI	Aprilia RSV4 RF	267.3
3	17 K. ABRAHAM	BMW S1000 RR	266.7
4	13 A. WEST	Kawasaki ZX-10R	266.7
5	25 J. BROOKES	BMW S1000 RR	266.0
6	40 R. RAMOS	Kawasaki ZX-10R	265.4
7	9 D. SCHMITTER	Kawasaki ZX-10R	264.7
8	2 L. CAMIER	MV Agusta 1000 F4	260.9
9	59 N. CANEPA	Yamaha YZF R1	260.9
10	61 F. MENGHI	Ducati Panigale R	260.2
11	11 S. AL SULAITI	Kawasaki ZX-10R	259.6
12	119 P. SZKOPEK	Yamaha YZF R1	259.6
13	4 G. VIZZIELLO	Kawasaki ZX-10R	258.4
14	56 P. SEBESTYÉN	Yamaha YZF R1	257.1

Seg. 1		Seg. 2		Seg. 3		Seg. 4		Seg. 5	
1	2 L. CAMIER 26.255	1	32 L. SAVADORI 21.564	1	13 A. WEST 13.201	1	2 L. CAMIER 12.831	1	32 L. SAVADORI 21.391
2	40 R. RAMOS 26.396	2	2 L. CAMIER 21.679	2	59 N. CANEPA 13.246	2	59 N. CANEPA 12.853	2	2 L. CAMIER 21.417
3	13 A. WEST 26.444	3	13 A. WEST 21.698	3	2 L. CAMIER 13.264	3	25 J. BROOKES 12.935	3	13 A. WEST 21.430
4	32 L. SAVADORI 26.449	4	40 R. RAMOS 21.728	4	32 L. SAVADORI 13.307	4	13 A. WEST 12.940	4	40 R. RAMOS 21.497
5	59 N. CANEPA 26.627	5	59 N. CANEPA 21.788	5	15 A. DE ANGELIS 13.331	5	32 L. SAVADORI 12.967	5	59 N. CANEPA 21.583
6	25 J. BROOKES 26.912	6	25 J. BROOKES 21.842	6	40 R. RAMOS 13.332	6	40 R. RAMOS 13.042	6	25 J. BROOKES 21.730
7	56 P. SEBESTYÉN 26.949	7	9 D. SCHMITTER 22.022	7	25 J. BROOKES 13.332	7	17 K. ABRAHAM 13.063	7	56 P. SEBESTYÉN 21.824
8	61 F. MENGHI 26.969	8	15 A. DE ANGELIS 22.026	8	17 K. ABRAHAM 13.425	8	15 A. DE ANGELIS 13.314	8	61 F. MENGHI 21.953
9	15 A. DE ANGELIS 27.167	9	17 K. ABRAHAM 22.039	9	4 G. VIZZIELLO 13.463	9	61 F. MENGHI 13.364	9	9 D. SCHMITTER 21.990
10	9 D. SCHMITTER 27.174	10	119 P. SZKOPEK 22.206	10	56 P. SEBESTYÉN 13.468	10	119 P. SZKOPEK 13.418	10	119 P. SZKOPEK 22.104
11	11 S. AL SULAITI 27.186	11	56 P. SEBESTYÉN 22.209	11	11 S. AL SULAITI 13.475	11	9 D. SCHMITTER 13.425	11	11 S. AL SULAITI 22.111
12	4 G. VIZZIELLO 27.267	12	61 F. MENGHI 22.218	12	119 P. SZKOPEK 13.506	12	56 P. SEBESTYÉN 13.427	12	17 K. ABRAHAM 22.225
13	17 K. ABRAHAM 27.287	13	4 G. VIZZIELLO 22.286	13	61 F. MENGHI 13.540	13	4 G. VIZZIELLO 13.525	13	4 G. VIZZIELLO 22.286
14	119 P. SZKOPEK 27.303	14	11 S. AL SULAITI 22.342	14	9 D. SCHMITTER 13.540	14	11 S. AL SULAITI 13.669	14	15 A. DE ANGELIS 24.436

18/06/2016

These data/results cannot be reproduced, stored and/or transmitted in whole or in part by any manner of electronic, mechanical, photocopying, recording, broadcasting or otherwise now known or herein after developed without the previous express consent by the copyright owner, except for reproduction in daily press and regular printed publications on sale to the public within 60 days of the event related to those data/results and always provided that copyright symbol appears together as follows below.

© DORNA WSBK ORGANIZATION Srl 2016

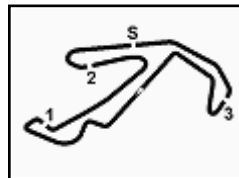
PIRELLI PERIODICA TIRING



Official Tyre Supplier



Official Timekeeper



Riviera di Rimini Round, 17-18-19 June 2016

World Superbike - Ideal Times Superpole 1

Misano World Circuit 4.226 m

1 / 1

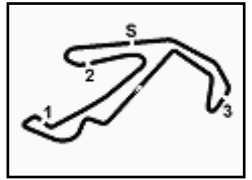
No. Rider	Nat	Bike	Seg. 1 Diff. 1	Seg. 2 Diff. 2	Seg. 3 Diff. 3	Seg. 4 Diff. 4	Seg. 5 Diff. 5	Ideal Time Best Lap	Pos.	Diff.
1 2 L. CAMIER	GBR	MV Agusta 1000 F4	26.255	21.679 0.069	13.264	12.831 0.070	21.417 0.111	1'35.446 1'35.696	2	0.250
2 32 L. SAVADORI	ITA	Aprilia RSV4 RF	26.449	21.564	13.307	12.967	21.391	1'35.678 1'35.678	1	0.000
3 13 A. WEST	AUS	Kawasaki ZX-10R	26.444	21.698 0.020	13.201 0.032	12.940	21.430	1'35.713 1'35.765	3	0.052
4 40 R. RAMOS	ESP	Kawasaki ZX-10R	26.396 0.197	21.728	13.332 0.054	13.042 0.082	21.497	1'35.995 1'36.328	4	0.333
5 59 N. CANEPA	ITA	Yamaha YZF R1	26.627 0.045	21.788 0.117	13.246 0.057	12.853 0.019	21.583	1'36.097 1'36.335	5	0.238
6 25 J. BROOKES	AUS	BMW S1000 RR	26.912	21.842 0.125	13.332 0.106	12.935	21.730 0.332	1'36.751 1'37.314	6	0.563
7 56 P. SEBESTYÉN	HUN	Yamaha YZF R1	26.949	22.209 0.313	13.468	13.427	21.824 0.256	1'37.877 1'38.446	10	0.569
8 17 K. ABRAHAM	CZE	BMW S1000 RR	27.287	22.039 0.157	13.425 0.184	13.063	22.225	1'38.039 1'38.380	9	0.341
9 61 F. MENGHI	ITA	Ducati Panigale R	26.969	22.218 0.072	13.540 0.026	13.364 0.001	21.953	1'38.044 1'38.143	7	0.099
10 9 D. SCHMITTER	SUI	Kawasaki ZX-10R	27.174	22.022	13.540	13.425 0.068	21.990 0.019	1'38.151 1'38.238	8	0.087
11 119 P. SZKOPEK	POL	Yamaha YZF R1	27.303 0.243	22.206	13.506 0.014	13.418 0.063	22.104 0.118	1'38.537 1'38.975	12	0.438
12 11 S. AL SULAITI	QAT	Kawasaki ZX-10R	27.186	22.342	13.475	13.669	22.111 0.030	1'38.783 1'38.813	11	0.030
13 4 G. VIZZIELLO	ITA	Kawasaki ZX-10R	27.267	22.286	13.463 0.198	13.525 0.146	22.286	1'38.827 1'39.171	13	0.344
14 15 A. DE ANGELIS	RSM	Aprilia RSV4 RF	27.167	22.026	13.331	13.314	24.436 1.749	1'40.274 1'42.023	14	1.749
Overall Ideal Time			26.255	21.564	13.201	12.831	21.391	1'35.242		

18/06/2016

These data/results cannot be reproduced, stored and/or transmitted in whole or in part by any manner of electronic, mechanical, photocopying, recording, broadcasting or otherwise now known or herein after developed without the previous express consent by the copyright owner, except for reproduction in daily press and regular printed publications on sale to the public within 60 days of the event related to those data/results and always provided that copyright symbol appears together as follows below.
© DORNA WSBK ORGANIZATION Srl 2016

PIRELLI PERGOIA TUNING



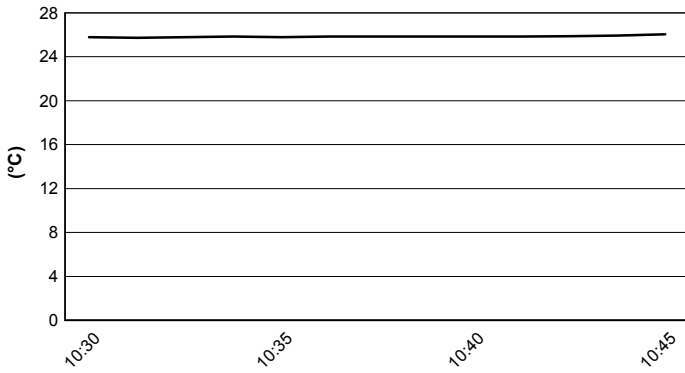


Misano World Circuit 4.226 m

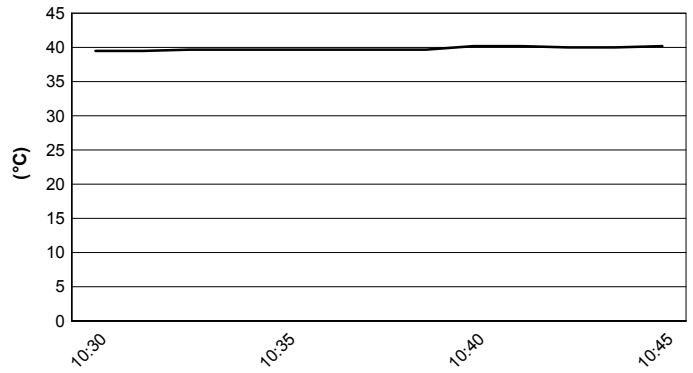
Riviera di Rimini Round, 17-18-19 June 2016
World Superbike - Weather Report Superpole 1

Session started 10:30 Session ended 10:46

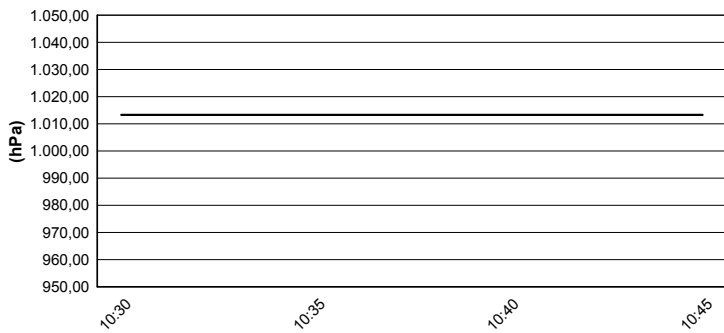
Air Temperature



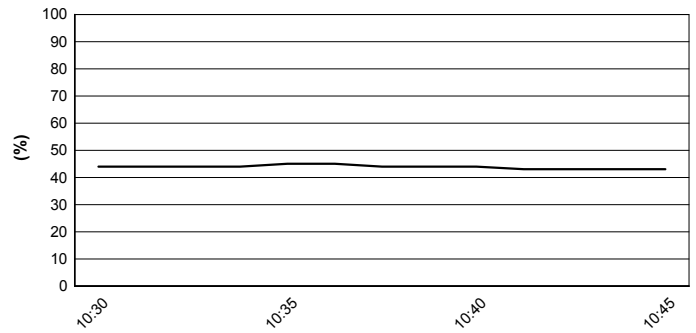
Track Temperature



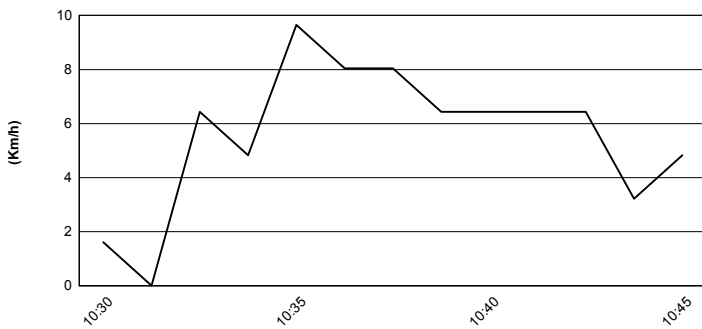
Air Pressure



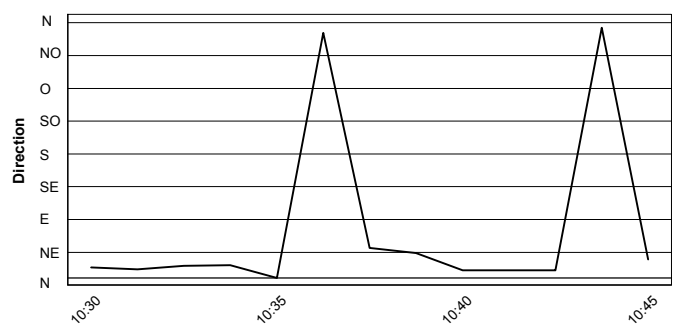
Humidity



Wind Speed



Wind Direction



These data/results cannot be reproduced, stored and/or transmitted in whole or in part by any manner of electronic, mechanical, photocopying, recording, broadcasting or otherwise now known or herein after developed without the previous express consent by the copyright owner, except for reproduction in daily press and regular printed publications on sale to the public within 60 days of the event related to those data/results and always provided that copyright symbol appears together as follows below.
© DORNA WSBK ORGANIZATION Srl 2016