

Riviera di Rimini Round, 17-18-19 June 2016

World Supersport - Results Free Practice 3rd Session

Misano World Circuit 4.226 m

1 / 2

No.	Rider	Nat	Team	Bike	Class	Time	Gap	Rel.	Laps	Speed	
										Avg	Max
1	21 R. KRUMMENACHER	SUI	Kawasaki Puccetti Racing	Kawasaki ZX-6R		1'38.299			7	154,769	237,9
2	1 K. SOFUOGLU	TUR	Kawasaki Puccetti Racing	Kawasaki ZX-6R		1'38.394	0.095	0.095	8	154,619	241,6
3	64 F. CARICASULO	ITA	Bardahl Evan Bros. Honda Racing	Honda CBR600RR		1'38.562	0.263	0.168	8	154,356	241,6
4	2 P. JACOBSEN	USA	Honda World Supersport Team	Honda CBR600RR		1'39.176	0.877	0.614	8	153,400	243,2
5	4 G. REA	GBR	GRT Racing Team	MV Agusta F3 675		1'39.437	1.138	0.261	7	152,997	236,8
6	11 C. GAMARINO	ITA	Team GoEleven	Kawasaki ZX-6R		1'39.447	1.148	0.010	7	152,982	236,8
7	86 A. BADOVINI	ITA	Gemar Balloons - Team Lorini	Honda CBR600RR		1'39.506	1.207	0.059	7	152,891	240,5
8	16 J. CLUZEL	FRA	MV Agusta Reparto Corse	MV Agusta F3 675		1'39.801	1.502	0.295	8	152,439	235,8
9	47 A. BASSANI	ITA	San Carlo Team Italia	Kawasaki ZX-6R	ESS	1'40.016	1.717	0.215	8	152,112	238,4
10	61 A. ZACCONE	ITA	San Carlo Team Italia	Kawasaki ZX-6R	ESS	1'40.035	1.736	0.019	8	152,083	238,4
11	55 I. MIKHALCHIK	UKR	DS Junior Team	Kawasaki ZX-6R	ESS	1'40.064	1.765	0.029	8	152,039	238,4
12	25 A. BALDOLINI	ITA	Race Department ATK#25	MV Agusta F3 675		1'40.069	1.770	0.005	7	152,031	238,4
13	71 C. BERGMAN	SWE	CIA Landlord Insurance Honda	Honda CBR600RR		1'40.083	1.784	0.014	8	152,010	235,8
14	87 L. ZANETTI	ITA	MV Agusta Reparto Corse	MV Agusta F3 675		1'40.111	1.812	0.028	8	151,967	236,8
15	81 L. STAPLEFORD	GBR	Profile Racing	Triumph Daytona 675		1'40.340	2.041	0.229	8	151,620	237,9
16	99 L. MORCIANO	ITA	Team GoEleven	Kawasaki ZX-6R		1'40.387	2.088	0.047	8	151,550	238,4
17	111 K. SMITH	GBR	CIA Landlord Insurance Honda	Honda CBR600RR		1'40.423	2.124	0.036	8	151,495	234,3
18	88 N. TEROL	ESP	Schmidt Racing	MV Agusta F3 675		1'40.482	2.183	0.059	8	151,406	233,8
19	44 R. ROLFO	ITA	Team Factory Vamag	MV Agusta F3 675		1'40.506	2.207	0.024	7	151,370	236,8
20	78 H. OKUBO	JPN	CIA Landlord Insurance Honda	Honda CBR600RR		1'40.528	2.229	0.022	7	151,337	235,8
21	6 D. STIRPE	ITA	Scuderia Maranga Racing	Kawasaki ZX-6R	ESS	1'40.807	2.508	0.279	9	150,918	240,0
22	10 N. CALERO	ESP	Orelac Racing VerdNatura	Kawasaki ZX-6R		1'40.882	2.583	0.075	7	150,806	235,8
23	63 Z. KHAIRUDDIN	MAS	Orelac Racing VerdNatura	Kawasaki ZX-6R		1'41.065	2.766	0.183	1	150,533	239,5
24	12 C. GOBBI	ITA	VFT Racing	Yamaha YZF R6	ESS	1'41.123	2.824	0.058	6	150,446	238,4
25	57 I. DIONISI	ITA	Ellan Vannin Motorsport	MV Agusta F3 675		1'41.191	2.892	0.068	4	150,345	230,3
26	19 K. WAHR	GER	Gemar Balloons - Team Lorini	Honda CBR600RR		1'41.349	3.050	0.158	8	150,111	234,8
27	23 C. TANGRE	FRA	Team Yohann Moto Sport	Suzuki GSX-R600	ESS	1'41.361	3.062	0.012	8	150,093	235,3
28	35 S. HILL	GBR	CIA Landlord Insurance Honda	Honda CBR600RR		1'41.387	3.088	0.026	8	150,055	230,8
29	41 A. WAGNER	AUS	GRT Racing Team	MV Agusta F3 675		1'41.953	3.654	0.566	7	149,222	230,8
30	82 L. CIPICIANI	ITA	Team VUEFFE Corse	Honda CBR600RR		1'42.060	3.761	0.107	8	149,065	240,0
31	77 K. RYDE	GBR	Schmidt Racing	MV Agusta F3 675		1'42.441	4.142	0.381	8	148,511	227,8
32	50 B. ORTT	CAN	WILSport Racedays Honda	Honda CBR600RR	ESS	1'43.071	4.772	0.630	8	147,603	232,3
33	96 J. ORELLANA	ESP	WILSport Racedays Honda	Honda CBR600RR	ESS	1'43.125	4.826	0.054	8	147,526	231,3
34	83 L. EPIS	AUS	Response RE Racing	Kawasaki ZX-6R		1'43.695	5.396	0.570	6	146,715	233,3
35	127 L. BRIGNOLI	ITA	Broncos Racing Team	Kawasaki ZX-6R					3		229,3
36	34 K. MANFREDI	ITA	Phoenix Racing Suzuki	Suzuki GSX-R600					0		
37	7 A. LICCIARDI	BEL	R2 MotorRacing Team	Kawasaki ZX-6R	ESS				0		

AIR	Humidity:	50%	Temp:	23°C
TRACK	Condition:	Dry	Temp:	32°C

Lap Record:	2015 J.Cluzel	1'37.482	156,070	Km/h
Best Lap:	2015 J.Cluzel	1'38.239	154,860	Km/h

These data/results cannot be reproduced, stored and/or transmitted in whole or in part by any manner of electronic, mechanical, photocopying, recording, broadcasting or otherwise now known or herein after developed without the previous express consent by the copyright owner, except for reproduction in daily press and regular printed publications on sale to the public within 60 days of the event related to those data/results and always provided that copyright symbol appears together as follows below.

© DORNA WSBK ORGANIZATION Srl 2016

Start	End	The results are provisional until the end of the time limit for protests and appeals
18/06/2016 09:15	09:32	and the completion of the technical checks.

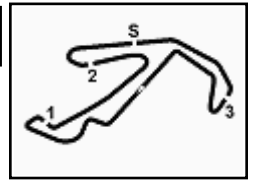
FICR PERUGIA TIMING



Official Tyre Supplier



Official Timekeeper



Riviera di Rimini Round, 17-18-19 June 2016

World Supersport - Results Free Practice 3rd Session

Session Highlights

09.15.01		Start
09.17.43	Licciardi	Technical Problem - Turn 1
09.18.46	Licciardi	Re-joined
09.20.31	Brignoli	Technical Problem - Turn 10
09.20.50	Brignoli	On the Gravel - Re-Joined
09.21.00	Khairuddin	Crashed - Turn 16
09.21.51	Ryde	Time Deleted - Exit Track Limits Turn 6
09.21.53	Ortt	Time Deleted - Exit Track Limits Turn 6
09.21.58	Gobbi	Time Deleted - Exit Track Limits Turn 6
09.23.25	Ryde	Time Deleted - Exit Track Limits Turn 6
09.23.32	Ortt	Time Deleted - Exit Track Limits Turn 6
09.23.38	Orellana	Time Deleted - Exit Track Limits Turn 6
09.24.57	Orellana	Time Deleted - Exit Track Limits Turn 6
09.25.01	Ortt	Time Deleted - Exit Track Limits Turn 6
09.28.23	Ortt	Time Deleted - Exit Track Limits Turn 6
09.28.50	Brignoli	On the Gravel - Re-Joined - Turn 1
09.32.23		End Of Session

Fastest Laps Sequence

No.	Rider	Nat	Team	Bike	Local Time	Time	Gap	Avg
6	D. STIRPE	ITA	Scuderia Maranga Racing	Kawasaki ZX-6R	09:17'18.830	2'24.807		105,061
1	K. SOFUOGLU	TUR	Kawasaki Puccetti Racing	Kawasaki ZX-6R	09:18'34.205	1'40.062	-44.745	152,042
21	R. KRUMMENACHER	SUI	Kawasaki Puccetti Racing	Kawasaki ZX-6R	09:18'47.687	1'39.486	-0.576	152,922
1	K. SOFUOGLU	TUR	Kawasaki Puccetti Racing	Kawasaki ZX-6R	09:20'13.112	1'38.907	-0.579	153,817
1	K. SOFUOGLU	TUR	Kawasaki Puccetti Racing	Kawasaki ZX-6R	09:21'51.794	1'38.682	-0.225	154,168
64	F. CARICASULO	ITA	Bardahl Evan Bros. Honda Racing	Honda CBR600RR	09:21'51.990	1'38.562	-0.120	154,356
1	K. SOFUOGLU	TUR	Kawasaki Puccetti Racing	Kawasaki ZX-6R	09:26'50.211	1'38.394	-0.168	154,619
21	R. KRUMMENACHER	SUI	Kawasaki Puccetti Racing	Kawasaki ZX-6R	09:27'39.592	1'38.299	-0.095	154,769

These data/results cannot be reproduced, stored and/or transmitted in whole or in part by any manner of electronic, mechanical, photocopying, recording, broadcasting or otherwise now known or herein after developed without the previous express consent by the copyright owner, except for reproduction in daily press and regular printed publications on sale to the public within 60 days of the event related to those data/results and always provided that copyright symbol appears together as follows below.

© DORNA WSBK ORGANIZATION Srl 2016

Start	End	The results are provisional until the end of the time limit for protests and appeals
18/06/2016 09:15	09:32	and the completion of the technical checks.

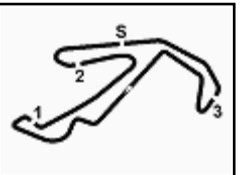
FIAT PERUGIA TIMING



Official Tyre Supplier



Official Timekeeper



Riviera di Rimini Round, 17-18-19 June 2016

World Supersport - Best Sector & Speed Free Practice 3rd Session

Misano World Circuit 4.226 m

Best Lap

1	21 R. KRUMMENACHER	Kawasaki ZX-6R	1'38.299
2	1 K. SOFUOGLU	Kawasaki ZX-6R	1'38.394
3	64 F. CARICASULO	Honda CBR600RR	1'38.562
4	2 P. JACOBSEN	Honda CBR600RR	1'39.176
5	4 G. REA	MV Austa F3 675	1'39.437
6	11 C. GAMARINO	Kawasaki ZX-6R	1'39.447
7	86 A. BADOVINI	Honda CBR600RR	1'39.506
8	16 J. CLUZEL	MV Austa F3 675	1'39.801
9	47 A. BASSANI	Kawasaki ZX-6R	1'40.016
10	61 A. ZACCONE	Kawasaki ZX-6R	1'40.035
11	55 I. MIKHALCHIK	Kawasaki ZX-6R	1'40.064
12	25 A. BALDOLINI	MV Austa F3 675	1'40.069
13	71 C. BERGMAN	Honda CBR600RR	1'40.083
14	87 L. ZANETTI	MV Austa F3 675	1'40.111
15	81 L. STAPLEFORD	Triumph Daytona 675	1'40.340
16	99 L. MORCIANO	Kawasaki ZX-6R	1'40.387
17	111 K. SMITH	Honda CBR600RR	1'40.423
18	88 N. TEROL	MV Austa F3 675	1'40.482
19	44 R. ROLFO	MV Austa F3 675	1'40.506
20	78 H. OKUBO	Honda CBR600RR	1'40.528
21	6 D. STIRPE	Kawasaki ZX-6R	1'40.807
22	10 N. CALERO	Kawasaki ZX-6R	1'40.882
23	63 Z. KHAIRUDDIN	Kawasaki ZX-6R	1'41.065
24	12 C. GOBBI	Yamaha YZF R6	1'41.123
25	57 I. DIONISI	MV Austa F3 675	1'41.191
26	19 K. WAHR	Honda CBR600RR	1'41.349
27	23 C. TANGRE	Suzuki GSX-R600	1'41.361
28	35 S. HILL	Honda CBR600RR	1'41.387
29	41 A. WAGNER	MV Austa F3 675	1'41.953
30	82 L. CIPICIANI	Honda CBR600RR	1'42.060
31	77 K. RYDE	MV Austa F3 675	1'42.441
32	50 B. ORTT	Honda CBR600RR	1'43.071
33	96 J. ORELLANA	Honda CBR600RR	1'43.125
34	83 L. EPIS	Kawasaki ZX-6R	1'43.695
35	34 K. MANFREDI	Suzuki GSX-R600	
36	7 A. LICCIARDI	Kawasaki ZX-6R	
37	127 L. BRIGNOLI	Kawasaki ZX-6R	

Best Sector & Speed

1	2 P. JACOBSEN	Honda CBR600RR	243.2
2	1 K. SOFUOGLU	Kawasaki ZX-6R	241.6
3	64 F. CARICASULO	Honda CBR600RR	241.6
4	86 A. BADOVINI	Honda CBR600RR	240.5
5	82 L. CIPICIANI	Honda CBR600RR	240.0
6	6 D. STIRPE	Kawasaki ZX-6R	240.0
7	63 Z. KHAIRUDDIN	Kawasaki ZX-6R	239.5
8	47 A. BASSANI	Kawasaki ZX-6R	238.4
9	25 A. BALDOLINI	MV Austa F3 675	238.4
10	55 I. MIKHALCHIK	Kawasaki ZX-6R	238.4
11	12 C. GOBBI	Yamaha YZF R6	238.4
12	61 A. ZACCONE	Kawasaki ZX-6R	238.4
13	99 L. MORCIANO	Kawasaki ZX-6R	238.4
14	21 R. KRUMMENACHER	Kawasaki ZX-6R	237.9
15	81 L. STAPLEFORD	Triumph Daytona 675	237.9
16	11 C. GAMARINO	Kawasaki ZX-6R	236.8
17	87 L. ZANETTI	MV Austa F3 675	236.8
18	44 R. ROLFO	MV Austa F3 675	236.8
19	4 G. REA	MV Austa F3 675	236.8
20	78 H. OKUBO	Honda CBR600RR	235.8
21	71 C. BERGMAN	Honda CBR600RR	235.8
22	10 N. CALERO	Kawasaki ZX-6R	235.8
23	16 J. CLUZEL	MV Austa F3 675	235.8
24	23 C. TANGRE	Suzuki GSX-R600	235.3
25	19 K. WAHR	Honda CBR600RR	234.8
26	111 K. SMITH	Honda CBR600RR	234.3
27	88 N. TEROL	MV Austa F3 675	233.8
28	83 L. EPIS	Kawasaki ZX-6R	233.3
29	50 B. ORTT	Honda CBR600RR	232.3
30	96 J. ORELLANA	Honda CBR600RR	231.3
31	35 S. HILL	Honda CBR600RR	230.8
32	41 A. WAGNER	MV Austa F3 675	230.8
33	57 I. DIONISI	MV Austa F3 675	230.3
34	127 L. BRIGNOLI	Kawasaki ZX-6R	229.3
35	77 K. RYDE	MV Austa F3 675	227.8

Seg. 1		Seg. 2		Seg. 3		Seg. 4		Seg. 5		
1	21 R. KRUMMENAC	26.565	1 K. SOFUOGLU	22.706	1 K. SOFUOGLU	13.727	21 R. KRUMMENAC	12.957	64 F. CARICASULO	22.021
2	1 K. SOFUOGLU	26.692	2 64 F. CARICASULO	22.735	2 64 F. CARICASULO	13.751	2 1 K. SOFUOGLU	13.030	2 21 R. KRUMMENAC	22.053
3	11 C. GAMARINO	26.703	3 2 P. JACOBSEN	22.776	3 2 P. JACOBSEN	13.814	3 2 P. JACOBSEN	13.162	3 1 K. SOFUOGLU	22.109
4	64 F. CARICASULO	26.813	4 4 G. REA	22.866	4 86 A. BADOVINI	13.817	4 64 F. CARICASULO	13.178	4 4 G. REA	22.142
5	61 A. ZACCONE	27.056	5 21 R. KRUMMENAC	22.883	5 11 C. GAMARINO	13.835	5 11 C. GAMARINO	13.214	5 2 P. JACOBSEN	22.176
6	4 G. REA	27.091	6 86 A. BADOVINI	22.895	6 21 R. KRUMMENAC	13.841	6 16 J. CLUZEL	13.244	6 16 J. CLUZEL	22.221
7	86 A. BADOVINI	27.106	7 55 I. MIKHALCHIK	22.969	7 6 D. STIRPE	13.935	7 25 A. BALDOLINI	13.258	7 87 L. ZANETTI	22.222
8	2 P. JACOBSEN	27.109	8 71 C. BERGMAN	22.987	8 4 G. REA	13.939	8 47 A. BASSANI	13.273	8 61 A. ZACCONE	22.243
9	16 J. CLUZEL	27.125	9 87 L. ZANETTI	22.995	9 81 L. STAPLEFORD	13.956	9 78 H. OKUBO	13.277	9 86 A. BADOVINI	22.264
10	55 I. MIKHALCHIK	27.135	10 16 J. CLUZEL	23.003	10 12 C. GOBBI	13.969	10 111 K. SMITH	13.284	10 47 A. BASSANI	22.295
11	99 L. MORCIANO	27.148	11 25 A. BALDOLINI	23.058	11 55 I. MIKHALCHIK	13.971	11 87 L. ZANETTI	13.292	11 11 C. GAMARINO	22.296
12	88 N. TEROL	27.170	12 61 A. ZACCONE	23.064	12 99 L. MORCIANO	13.980	12 61 A. ZACCONE	13.315	12 25 A. BALDOLINI	22.329
13	81 L. STAPLEFORD	27.234	13 11 C. GAMARINO	23.079	13 61 A. ZACCONE	13.983	13 71 C. BERGMAN	13.320	13 55 I. MIKHALCHIK	22.362
14	10 N. CALERO	27.238	14 44 R. ROLFO	23.082	14 82 L. CIPICIANI	13.984	14 44 R. ROLFO	13.320	14 99 L. MORCIANO	22.424
15	47 A. BASSANI	27.249	15 111 K. SMITH	23.099	15 47 A. BASSANI	13.986	15 81 L. STAPLEFORD	13.339	15 12 C. GOBBI	22.432
16	25 A. BALDOLINI	27.254	16 88 N. TEROL	23.109	16 63 Z. KHAIRUDDIN	13.994	16 4 G. REA	13.342	16 10 N. CALERO	22.433
17	71 C. BERGMAN	27.280	17 47 A. BASSANI	23.136	17 25 A. BALDOLINI	14.010	17 99 L. MORCIANO	13.345	17 23 C. TANGRE	22.437
18	111 K. SMITH	27.304	18 6 D. STIRPE	23.148	18 87 L. ZANETTI	14.027	18 86 A. BADOVINI	13.377	18 88 N. TEROL	22.443
19	57 I. DIONISI	27.311	19 99 L. MORCIANO	23.167	19 10 N. CALERO	14.037	19 6 D. STIRPE	13.387	19 81 L. STAPLEFORD	22.447
20	44 R. ROLFO	27.314	20 12 C. GOBBI	23.181	20 71 C. BERGMAN	14.044	20 55 I. MIKHALCHIK	13.433	20 6 D. STIRPE	22.448
21	78 H. OKUBO	27.344	21 81 L. STAPLEFORD	23.189	21 16 J. CLUZEL	14.045	21 19 K. WAHR	13.442	21 71 C. BERGMAN	22.452
22	6 D. STIRPE	27.381	22 63 Z. KHAIRUDDIN	23.239	22 78 H. OKUBO	14.051	22 88 N. TEROL	13.464	22 44 R. ROLFO	22.466
23	87 L. ZANETTI	27.406	23 57 I. DIONISI	23.274	23 111 K. SMITH	14.058	23 35 S. HILL	13.491	23 78 H. OKUBO	22.468
24	63 Z. KHAIRUDDIN	27.463	24 19 K. WAHR	23.323	24 41 A. WAGNER	14.082	24 23 C. TANGRE	13.548	24 111 K. SMITH	22.474
25	23 C. TANGRE	27.474	25 41 A. WAGNER	23.333	25 44 R. ROLFO	14.090	25 10 N. CALERO	13.580	25 19 K. WAHR	22.495
26	35 S. HILL	27.516	26 23 C. TANGRE	23.348	26 35 S. HILL	14.109	26 96 J. ORELLANA	13.582	26 63 Z. KHAIRUDDIN	22.547
27	19 K. WAHR	27.614	27 78 H. OKUBO	23.388	27 23 C. TANGRE	14.140	27 82 L. CIPICIANI	13.590	27 57 I. DIONISI	22.593
28	82 L. CIPICIANI	27.657	28 35 S. HILL	23.394	28 88 N. TEROL	14.152	28 57 I. DIONISI	13.599	28 35 S. HILL	22.708
29	77 K. RYDE	27.713	29 10 N. CALERO	23.442	29 19 K. WAHR	14.194	29 77 K. RYDE	13.608	29 41 A. WAGNER	22.814
30	12 C. GOBBI	27.733	30 50 B. ORTT	23.448	30 57 I. DIONISI	14.228	30 63 Z. KHAIRUDDIN	13.624	30 82 L. CIPICIANI	22.842
31	41 A. WAGNER	27.828	31 82 L. CIPICIANI	23.688	31 96 J. ORELLANA	14.326	31 12 C. GOBBI	13.633	31 77 K. RYDE	22.856
32	96 J. ORELLANA	28.079	32 96 J. ORELLANA	23.779	32 77 K. RYDE	14.341	32 50 B. ORTT	13.668	32 96 J. ORELLANA	22.877
33	83 L. EPIS	28.270	33 83 L. EPIS	23.861	33 50 B. ORTT	14.356	33 41 A. WAGNER	13.715	33 50 B. ORTT	22.957
34	50 B. ORTT	28.312	34 77 K. RYDE	23.923	34 83 L. EPIS	14.374	34 83 L. EPIS	13.789	34 83 L. EPIS	22.993
35	127 L. BRIGNOLI	51.196	35 7 A. LICCIARDI	24.692	35 7 A. LICCIARDI	14.593	35 127 L. BRIGNOLI	14.226	35 127 L. BRIGNOLI	26.345
36	7 A. LICCIARDI	1'53.677	36 127 L. BRIGNOLI	24.704	36 127 L. BRIGNOLI	14.651	36 7 A. LICCIARDI	14.263	36 7 A. LICCIARDI	26.919
			37 34 K. MANFREDI	35.661	37 34 K. MANFREDI	21.467	37 34 K. MANFREDI	20.942		

18/06/2016

These data/results cannot be reproduced, stored and/or transmitted in whole or in part by any manner of electronic, mechanical, photocopying, recording, broadcasting or otherwise now known or herein after developed without the previous express consent by the copyright owner, except for reproduction in daily press and regular printed publications on sale to the public within 60 days of the event related to those data/results and always provided that copyright symbol appears together as follows below.

© DORNA WSBK ORGANIZATION Srl 2016

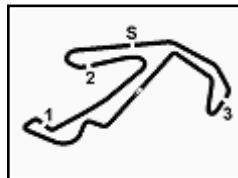
FICR PERUGIA TIMING



Official Tyre Supplier



Official Timekeeper



Riviera di Rimini Round, 17-18-19 June 2016

World Supersport - Ideal Times Free Practice 3rd Session

Misano World Circuit 4.226 m

1 / 2

No.	Rider	Nat	Bike	Seg. 1 Diff. 1	Seg. 2 Diff. 2	Seg. 3 Diff. 3	Seg. 4 Diff. 4	Seg. 5 Diff. 5	Ideal Time Best Lap	Pos.	Diff.
1	1 K. SOFUOGLU	TUR	Kawasaki ZX-6R	26.692	22.706	13.727 0.038	13.030	22.109 0.092	1'38.264 1'38.394	5	0.130
2	21 R. KRUMMENACHER	SUI	Kawasaki ZX-6R	26.565	22.883	13.841	12.957	22.053	1'38.299 1'38.299	4	0.000
3	64 F. CARICASULO	ITA	Honda CBR600RR	26.813	22.735	13.751 0.064	13.178	22.021	1'38.498 1'38.562	6	0.064
4	2 P. JACOBSEN	USA	Honda CBR600RR	27.109	22.776	13.814 0.099	13.162 0.040	22.176	1'39.037 1'39.176	7	0.139
5	11 C. GAMARINO	ITA	Kawasaki ZX-6R	26.703 0.213	23.079 0.026	13.835 0.001	13.214 0.021	22.296 0.059	1'39.127 1'39.447	9	0.320
6	4 G. REA	GBR	MV Agusta F3 675	27.091 0.044	22.866	13.939	13.342 0.013	22.142	1'39.380 1'39.437	8	0.057
7	86 A. BADOVINI	ITA	Honda CBR600RR	27.106	22.895 0.047	13.817	13.377	22.264	1'39.459 1'39.506	10	0.047
8	16 J. CLUZEL	FRA	MV Agusta F3 675	27.125 0.066	23.003	14.045 0.023	13.244 0.033	22.221 0.041	1'39.638 1'39.801	11	0.163
9	61 A. ZACCONI	ITA	Kawasaki ZX-6R	27.056 0.060	23.064 0.100	13.983 0.020	13.315 0.094	22.243 0.100	1'39.661 1'40.035	13	0.374
10	55 I. MIKHALCHIK	UKR	Kawasaki ZX-6R	27.135	22.969	13.971 0.081	13.433 0.113	22.362	1'39.870 1'40.064	14	0.194
11	25 A. BALDOLINI	ITA	MV Agusta F3 675	27.254 0.035	23.058 0.027	14.010 0.098	13.258	22.329	1'39.909 1'40.069	15	0.160
12	47 A. BASSANI	ITA	Kawasaki ZX-6R	27.249	23.136	13.986 0.077	13.273	22.295	1'39.939 1'40.016	12	0.077
13	87 L. ZANETTI	ITA	MV Agusta F3 675	27.406 0.030	22.995	14.027 0.139	13.292	22.222	1'39.942 1'40.111	17	0.169
14	99 L. MORCIANO	ITA	Kawasaki ZX-6R	27.148 0.137	23.167 0.037	13.980 0.092	13.345 0.057	22.424	1'40.064 1'40.387	19	0.323
15	71 C. BERGMAN	SWE	Honda CBR600RR	27.280	22.987	14.044	13.320	22.452	1'40.083 1'40.083	16	0.000
16	81 L. STAPLEFORD	GBR	Triumph Daytona 675	27.234 0.055	23.189	13.956	13.339	22.447 0.120	1'40.165 1'40.340	18	0.175
17	111 K. SMITH	GBR	Honda CBR600RR	27.304 0.014	23.099 0.147	14.058	13.284 0.005	22.474 0.038	1'40.219 1'40.423	20	0.204
18	44 R. ROLFO	ITA	MV Agusta F3 675	27.314 0.202	23.082	14.090	13.320 0.011	22.466 0.021	1'40.272 1'40.506	22	0.234
19	6 D. STIRPE	ITA	Kawasaki ZX-6R	27.381 0.274	23.148	13.935 0.125	13.387	22.448 0.109	1'40.299 1'40.807	24	0.508
20	88 N. TEROL	ESP	MV Agusta F3 675	27.170 0.120	23.109	14.152	13.464 0.024	22.443	1'40.338 1'40.482	21	0.144
21	78 H. OKUBO	JPN	Honda CBR600RR	27.344	23.388	14.051	13.277	22.468	1'40.528 1'40.528	23	0.000
22	10 N. GALERO	ESP	Kawasaki ZX-6R	27.238	23.442 0.044	14.037 0.108	13.580	22.433	1'40.730 1'40.882	25	0.152
23	63 Z. KHAIRUDDIN	MAS	Kawasaki ZX-6R	27.463 0.126	23.239 0.072	13.994	13.624	22.547	1'40.867 1'41.065	26	0.198
24	23 C. TANGRE	FRA	Suzuki GSX-R600	27.474 0.151	23.348 0.024	14.140 0.057	13.548	22.437 0.182	1'40.947 1'41.361	30	0.414
25	12 C. GOBBI	ITA	Yamaha YZF R6	27.733	23.181	13.969 0.175	13.633	22.432	1'40.948 1'41.123	27	0.175
26	57 I. DIONISI	ITA	MV Agusta F3 675	27.311	23.274	14.228 0.033	13.599 0.153	22.593	1'41.005 1'41.191	28	0.186
27	19 K. WAHR	GER	Honda CBR600RR	27.614 0.013	23.323	14.194 0.051	13.442 0.115	22.495 0.102	1'41.068 1'41.349	29	0.281
28	35 S. HILL	GBR	Honda CBR600RR	27.516 0.103	23.394 0.041	14.109 0.025	13.491	22.708	1'41.218 1'41.387	31	0.169
29	82 L. CIPICIANI	ITA	Honda CBR600RR	27.657	23.688	13.984 0.078	13.590 0.123	22.842 0.098	1'41.761 1'42.060	33	0.299
30	41 A. WAGNER	AUS	MV Agusta F3 675	27.828 0.034	23.333	14.082 0.135	13.715	22.814 0.012	1'41.772 1'41.953	32	0.181
31	77 K. RYDE	GBR	MV Agusta F3 675	27.713	23.923	14.341	13.608	22.856	1'42.441 1'42.441	34	0.000

18/06/2016

These data/results cannot be reproduced, stored and/or transmitted in whole or in part by any manner of electronic, mechanical, photocopying, recording, broadcasting or otherwise now known or herein after developed without the previous express consent by the copyright owner, except for reproduction in daily press and regular printed publications on sale to the public within 60 days of the event related to those data/results and always provided that copyright symbol appears together as follows below.
© DORNA WSBK ORGANIZATION Srl 2016

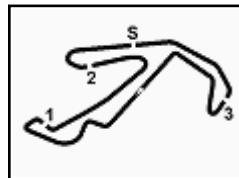
FICR PERUGIA TIMING



Official Tyre Supplier



Official Timekeeper



Misano World Circuit 4.226 m

Riviera di Rimini Round, 17-18-19 June 2016

World Supersport - Ideal Times Free Practice 3rd Session

2 / 2

No. Rider	Nat	Bike	Seg. 1 Diff. 1	Seg. 2 Diff. 2	Seg. 3 Diff. 3	Seg. 4 Diff. 4	Seg. 5 Diff. 5	Ideal Time			
								Best Lap	Pos.	Diff.	
32	96 J. ORELLANA	ESP	Honda CBR600RR	28.079 0.117	23.779	14.326 0.147	13.582 0.218	22.877	1'42.643 1'43.125	36	0.482
33	50 B. ORTT	CAN	Honda CBR600RR	28.312	23.448 0.330	14.356	13.668	22.957	1'42.741 1'43.071	35	0.330
34	83 L. EPIS	AUS	Kawasaki ZX-6R	28.270 0.084	23.861	14.374 0.122	13.789 0.202	22.993	1'43.287 1'43.695	37	0.408
Overall Ideal Time				26.565	22.706	13.727	12.957	22.021	1'37.976		

18/06/2016

These data/results cannot be reproduced, stored and/or transmitted in whole or in part by any manner of electronic, mechanical, photocopying, recording, broadcasting or otherwise now known or herein after developed without the previous express consent by the copyright owner, except for reproduction in daily press and regular printed publications on sale to the public within 60 days of the event related to those data/results and always provided that copyright symbol appears together as follows below.
© DORNA WSBK ORGANIZATION Srl 2016

FICR PERUGIA TIMING



Official Tyre Supplier



Official Timekeeper

Riviera di Rimini Round, 17-18-19 June 2016
World Supersport - Chronological Analysis Free Practice 3rd Session

Misano World Circuit 4.226 m

3 / 3

1	28.459	25.053	15.617	14.908	23.749	222.7	9:17'10.855
2	27.702	23.860	14.401	14.107	31.715	1'52.542	228.3
3	27.654	23.523	14.109	13.497	22.741	1'41.572	229.8
4	27.646	23.529	14.109	13.579	22.736	1'41.607	230.8
5	27.619	23.686	14.263	13.518	22.788	1'41.901	230.3
6	27.619	23.435	14.134	13.491	22.708	1'41.387	230.8
7	28.557	31.633	14.612	13.779	26.700	1'55.281	220.0
8	27.516	23.394	14.170	13.519	23.020	1'41.619	228.8
	27.754	23.492	14.177	13.499	23.130	1'42.052	229.3

29° 41 A. WAGNER (1'41.953)							
Lap	Seg. 1	Seg. 2	Seg. 3	Seg. 4	Seg. 5	Lap Time	Local Time
		25.055	15.207	14.702	30.763	228.3	9:17'18.755
1	1'12.054	24.275	14.585	14.223	23.230	2'28.367 P	228.8
2	28.369	23.670	14.326	13.826	23.094	1'43.285	230.3
3	28.273	23.580	14.231	14.038	22.954	1'43.076	230.8
4	32.340	26.512	14.819	13.938	23.006	1'50.615	227.4
5	27.828	23.531	14.119	13.732	22.814	1'42.024	229.8
6	27.862	23.333	14.217	13.715	22.826	1'41.953	229.8
7	27.947	23.436	14.082	13.801	22.985	1'42.251	230.8

30° 82 L. CIPICIANI (1'42.060)							
Lap	Seg. 1	Seg. 2	Seg. 3	Seg. 4	Seg. 5	Lap Time	Local Time
		25.589	14.851	14.614	23.566	224.5	9:17'05.935
1	28.510	23.870	14.353	13.590	22.992	1'43.315	240.0
2	28.170	23.869	13.984	13.729	22.878	1'42.630	237.9
3	28.571	23.803	14.115	13.803	23.047	1'43.339	236.8
4	28.026	23.730	14.009	13.927	22.842	1'42.534	237.4
5	27.657	23.688	14.062	13.713	22.940	1'42.060	238.4
6	27.999	24.270	14.102	13.765	23.011	1'43.147	234.8
7	28.139	23.827	14.282	13.931	23.410	1'43.589	233.8
8	28.553	24.032	14.118	13.884	23.984	1'44.571	234.3

31° 77 K. RYDE (1'42.441)							
Lap	Seg. 1	Seg. 2	Seg. 3	Seg. 4	Seg. 5	Lap Time	Local Time
		24.905	14.684	13.961	23.475	224.5	9:16'58.224
1	28.535	24.142	14.370	13.824	23.857	1'44.728	226.4
2	27.957	27.628	16.852	14.414	23.186	1'50.037	191.5
3	27.815	23.986	14.384	13.716	22.876	1'42.777 C	227.4
4	29.170	24.779	14.426	13.958	27.017	1'49.350 C	227.8
5	27.713	23.923	14.341	13.608	22.856	1'42.441	226.4
6	33.848	26.807	18.223	14.737	23.247	1'56.862	176.8
7	27.939	24.088	14.535	14.015	27.203	1'47.780	226.4
8	28.012	23.945	14.486	13.677	35.677	1'55.797 P	225.0

32° 50 B. ORTT (1'43.071)							
Lap	Seg. 1	Seg. 2	Seg. 3	Seg. 4	Seg. 5	Lap Time	Local Time
		26.372	15.527	14.818	23.667	225.0	9:17'10.222
1	28.783	23.855	14.490	13.899	23.079	1'44.106	229.3
2	29.014	23.448	14.600	14.118	23.135	1'44.315	228.3
3	28.691	23.890	14.381	13.836	23.038	1'43.836 C	229.8
4	28.688	23.720	14.333	13.768	23.010	1'43.519 C	232.3
5	28.307	23.715	14.395	13.738	23.143	1'43.298 C	231.3
6	28.317	23.835	14.466	13.890	23.116	1'43.624	228.8
7	28.328	23.745	14.539	13.829	23.054	1'43.495 C	227.8
8	28.312	23.778	14.356	13.668	22.957	1'43.071	230.8

33° 96 J. ORELLANA (1'43.125)							
Lap	Seg. 1	Seg. 2	Seg. 3	Seg. 4	Seg. 5	Lap Time	Local Time
		25.010	14.869	14.397	23.391	228.8	9:17'02.685
1	28.724	24.494	14.497	13.970	23.038	1'44.723	231.3
2	28.149	23.833	14.326	13.758	23.081	1'43.147	229.8
3	28.196	23.779	14.473	13.800	22.877	1'43.125	227.8
4	28.304	23.724	14.411	13.827	22.773	1'43.039 C	228.8
5	28.029	23.764	14.402	13.734	22.859	1'42.788 C	228.3
6	28.079	23.998	14.405	13.705	23.520	1'43.707	227.4
7	28.266	23.898	14.413	13.582	23.245	1'43.404	227.8
8	28.259	34.438	18.433	14.911	24.070	2'00.111	226.4

34° 83 L. EPIS (1'43.695)							
Lap	Seg. 1	Seg. 2	Seg. 3	Seg. 4	Seg. 5	Lap Time	Local Time
		24.550	15.040	14.060	23.537	230.8	9:16'56.802
1	28.441	24.166	14.576	14.077	23.964	1'45.224	229.8
2	28.270	24.110	14.374	13.789	29.651	1'50.194 P	233.3
3	2'58.923	25.549	15.597	14.971	24.107	4'19.147 P	222.7
4	28.354	23.861	14.496	13.991	22.993	1'43.695	228.8
5	28.731	23.900	14.380	13.898	23.292	1'44.201	228.8

P = Pits In/Out - C = Lap-Time Cancelled

These data/results cannot be reproduced, stored and/or transmitted in whole or in part by any manner of electronic, mechanical, photocopying, recording, broadcasting or otherwise now known or herein after developed without the previous express consent by the copyright owner, except for reproduction in daily press and regular printed publications on sale to the public within 60 days of the event related to those data/results and always provided that copyright symbol appears together as follows below.

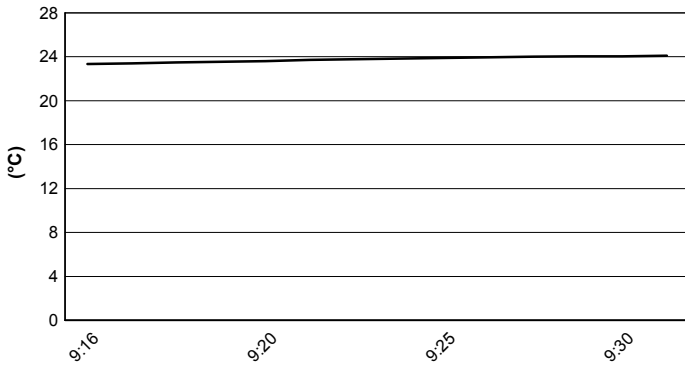
© DORNA WSBK ORGANIZATION Srl 2016



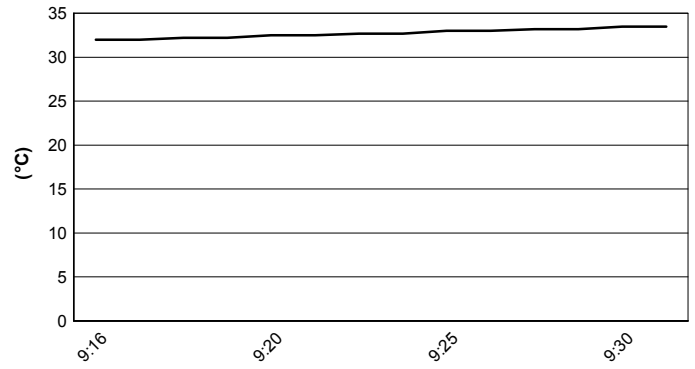
Riviera di Rimini Round, 17-18-19 June 2016
World Supersport - Weather Report Free Practice 3rd Session

Session started 9:15 Session ended 9:32

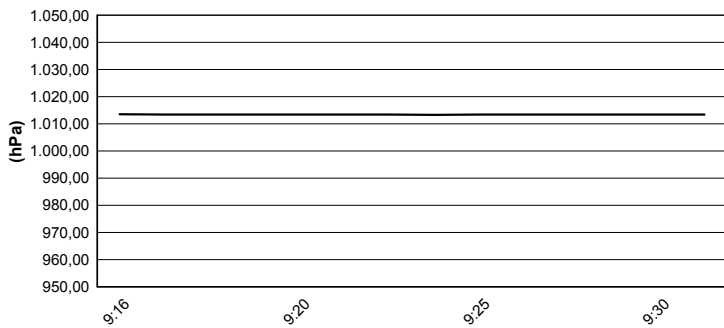
Air Temperature



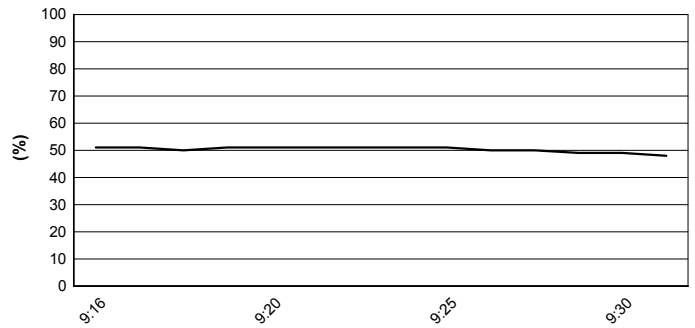
Track Temperature



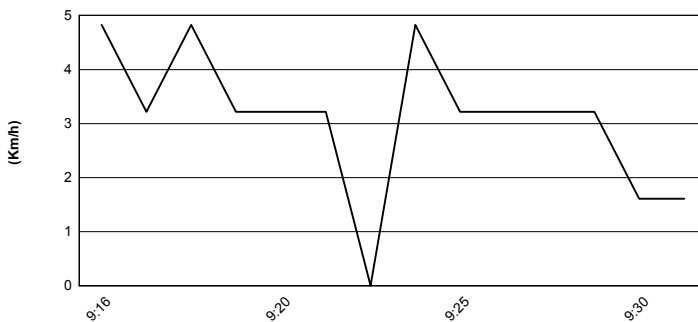
Air Pressure



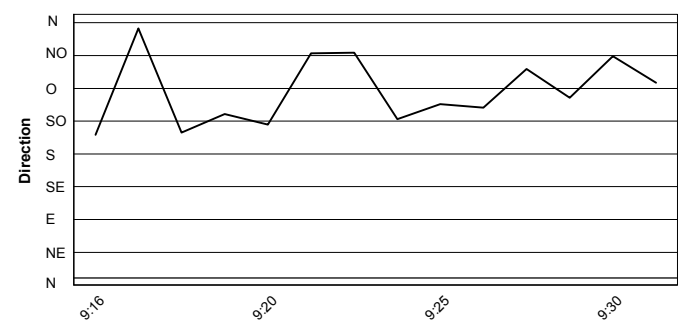
Humidity



Wind Speed



Wind Direction



These data/results cannot be reproduced, stored and/or transmitted in whole or in part by any manner of electronic, mechanical, photocopying, recording, broadcasting or otherwise now known or herein after developed without the previous express consent by the copyright owner, except for reproduction in daily press and regular printed publications on sale to the public within 60 days of the event related to those data/results and always provided that copyright symbol appears together as follows below.
 © DORNA WSBK ORGANIZATION Srl 2016

