

## Riviera di Rimini Round, 17-18-19 June 2016

### World Supersport - Results Superpole 1

Misano World Circuit 4.226 m

1 / 2

No.	Rider	Nat	Team	Bike	Class	Time	Gap	Rel.	Laps	Speed	
										Avg	Max
1*	86 A. BADOVINI	ITA	Gemar Balloons - Team Lorini	Honda CBR600RR		<b>1'39.082</b>			6	153,546	<b>234,3</b>
2*	81 L. STAPLEFORD	GBR	Profile Racing	Triumph Daytona 675		<b>1'39.330</b>	0.248	0.248	7	153,162	<b>233,8</b>
3	25 A. BALDOLINI	ITA	Race Department ATK#25	MV Agusta F3 675		<b>1'39.535</b>	0.453	0.205	6	152,847	<b>229,8</b>
4	71 C. BERGMAN	SWE	CIA Landlord Insurance Honda	Honda CBR600RR		<b>1'39.688</b>	0.606	0.153	7	152,612	<b>234,3</b>
5	87 L. ZANETTI	ITA	MV Agusta Reparto Corse	MV Agusta F3 675		<b>1'39.796</b>	0.714	0.108	6	152,447	<b>234,3</b>
6	78 H. OKUBO	JPN	CIA Landlord Insurance Honda	Honda CBR600RR		<b>1'39.847</b>	0.765	0.051	7	152,369	<b>236,3</b>
7	6 D. STIRPE	ITA	Scuderia Maranga Racing	Kawasaki ZX-6R	ESS	<b>1'39.891</b>	0.809	0.044	6	152,302	<b>231,3</b>
8	99 L. MORCIANO	ITA	Team GoEleven	Kawasaki ZX-6R		<b>1'39.947</b>	0.865	0.056	6	152,217	<b>234,8</b>
9	47 A. BASSANI	ITA	San Carlo Team Italia	Kawasaki ZX-6R	ESS	<b>1'39.988</b>	0.906	0.041	6	152,154	<b>235,3</b>
10	111 K. SMITH	GBR	CIA Landlord Insurance Honda	Honda CBR600RR		<b>1'39.988</b>	0.906	0.000	7	152,154	<b>234,8</b>
11	12 C. GOBBI	ITA	VFT Racing	Yamaha YZF R6	ESS	<b>1'40.110</b>	1.028	0.122	6	151,969	<b>231,8</b>
12	57 I. DIONISI	ITA	Ellan Vannin Motorsport	MV Agusta F3 675		<b>1'40.280</b>	1.198	0.170	7	151,711	<b>227,8</b>
13	35 S. HILL	GBR	CIA Landlord Insurance Honda	Honda CBR600RR		<b>1'40.548</b>	1.466	0.268	7	151,307	<b>229,8</b>
14	88 N. TEROL	ESP	Schmidt Racing	MV Agusta F3 675		<b>1'40.596</b>	1.514	0.048	7	151,235	<b>229,8</b>
15	127 L. BRIGNOLI	ITA	Broncos Racing Team	Kawasaki ZX-6R		<b>1'40.705</b>	1.623	0.109	6	151,071	<b>235,8</b>
16	10 N. CALERO	ESP	Orelac Racing VerdNatura	Kawasaki ZX-6R		<b>1'40.869</b>	1.787	0.164	5	150,825	<b>231,3</b>
17	41 A. WAGNER	AUS	GRT Racing Team	MV Agusta F3 675		<b>1'41.001</b>	1.919	0.132	6	150,628	<b>231,3</b>
18	19 K. WAHR	GER	Gemar Balloons - Team Lorini	Honda CBR600RR		<b>1'41.103</b>	2.021	0.102	6	150,476	<b>229,8</b>
19	63 Z. KHAIRUDDIN	MAS	Orelac Racing VerdNatura	Kawasaki ZX-6R		<b>1'41.242</b>	2.160	0.139	1	150,270	<b>231,3</b>
20	82 L. CIPICIANI	ITA	Team VUEFFE Corse	Honda CBR600RR		<b>1'41.265</b>	2.183	0.023	7	150,236	<b>234,3</b>
21	23 C. TANGRE	FRA	Team Yohann Moto Sport	Suzuki GSX-R600	ESS	<b>1'41.374</b>	2.292	0.109	6	150,074	<b>230,3</b>
22	96 J. ORELLANA	ESP	WILSport Racedays Honda	Honda CBR600RR	ESS	<b>1'41.843</b>	2.761	0.469	5	149,383	<b>230,3</b>
23	77 K. RYDE	GBR	Schmidt Racing	MV Agusta F3 675		<b>1'42.780</b>	3.698	0.937	6	148,021	<b>224,1</b>
24	50 B. ORTT	CAN	WILSport Racedays Honda	Honda CBR600RR	ESS	<b>1'42.908</b>	3.826	0.128	7	147,837	<b>225,0</b>
25	83 L. EPIS	AUS	Response RE Racing	Kawasaki ZX-6R		<b>1'42.928</b>	3.846	0.020	7	147,808	<b>229,3</b>
26	34 K. MANFREDI	ITA	Phoenix Racing Suzuki	Suzuki GSX-R600		<b>1'46.834</b>	7.752	3.906	5	142,404	<b>198,5</b>
27	7 A. LICCIARDI	BEL	R2 MotorRacing Team	Kawasaki ZX-6R	ESS				0		

\* Qualified to Superpole 2

AIR	Humidity:	41%	Temp:	26°C
TRACK	Condition:	Dry	Temp:	43°C

Lap Record:	2015 J.Cluzel	1'37.482	156,070	Km/h
Best Lap:	2015 J.Cluzel	1'38.239	154,860	Km/h

These data/results cannot be reproduced, stored and/or transmitted in whole or in part by any manner of electronic, mechanical, photocopying, recording, broadcasting or otherwise now known or herein after developed without the previous express consent by the copyright owner, except for reproduction in daily press and regular printed publications on sale to the public within 60 days of the event related to those data/results and always provided that copyright symbol appears together as follows below.

© DORNA WSBK ORGANIZATION Srl 2016

Start	End	The results are provisional until the end of the time limit for protests and appeals
18/06/2016 11:35	11:53	and the completion of the technical checks.

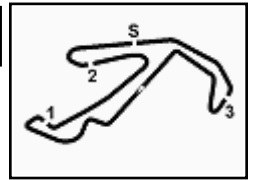
FICR PERUGIA TIMING



Official Tyre Supplier



Official Timekeeper



## Riviera di Rimini Round, 17-18-19 June 2016

### World Supersport - Results Superpole 1

#### Session Highlights

11.35.01		Start
11.35.03		WorldSBK Works on Bike are allowed
11.41.23	Terol	Time Deleted - Exit Track Limits Turn 3
11.46.08	Ryde	Time Deleted - Exit Track Limits Turn 6
11.47.43	Cipiciani	Time Deleted (2'20.081) - Exit Track Limits Turn
11.48.57	Orellana	Crashed - Turn 5
11.51.44	Morciano	Crashed - Rider OK - Turn 16
11.53.06	Okubo	Time Deleted (1'39.550) - Exit Track Limits Turn
11.53.18		End Of Session

#### Fastest Laps Sequence

No.	Rider	Nat	Team	Bike	Local Time	Time	Gap	Avg
50	B. ORTT	CAN	WILSport Racedays Honda	Honda CBR600RR	11:37'33.413	<b>2'13.384</b>		114,059
86	A. BADOVINI	ITA	Gemar Balloons - Team Lorini	Honda CBR600RR	11:38'32.765	<b>1'40.016</b>	-33.368	152,112
86	A. BADOVINI	ITA	Gemar Balloons - Team Lorini	Honda CBR600RR	11:40'12.559	<b>1'39.794</b>	-0.222	152,450
71	C. BERGMAN	SWE	CIA Landlord Insurance Honda	Honda CBR600RR	11:47'04.240	<b>1'39.688</b>	-0.106	152,612
86	A. BADOVINI	ITA	Gemar Balloons - Team Lorini	Honda CBR600RR	11:49'33.358	<b>1'39.522</b>	-0.166	152,867
81	L. STAPLEFORD	GBR	Profile Racing	Triumph Daytona 675	11:49'51.224	<b>1'39.330</b>	-0.192	153,162
86	A. BADOVINI	ITA	Gemar Balloons - Team Lorini	Honda CBR600RR	11:51'12.440	<b>1'39.082</b>	-0.248	153,546

These data/results cannot be reproduced, stored and/or transmitted in whole or in part by any manner of electronic, mechanical, photocopying, recording, broadcasting or otherwise now known or herein after developed without the previous express consent by the copyright owner, except for reproduction in daily press and regular printed publications on sale to the public within 60 days of the event related to those data/results and always provided that copyright symbol appears together as follows below.

© DORNA WSBK ORGANIZATION Srl 2016

Start	End	The results are provisional until the end of the time limit for protests and appeals
18/06/2016 11:35	11:53	and the completion of the technical checks.

FIAT PERUGIA TIMING



Official Tyre Supplier



Official Timekeeper

## Riviera di Rimini Round, 17-18-19 June 2016

### World Supersport - Best Sector & Speed Superpole 1

Misano World Circuit 4.226 m

#### Best Lap

1	86 A. BADOVINI	Honda CBR600RR	1'39.082
2	81 L. STAPLEFORD	Triumph Daytona 675	1'39.330
3	25 A. BALDOLINI	MV Austa F3 675	1'39.535
4	71 C. BERGMAN	Honda CBR600RR	1'39.688
5	87 L. ZANETTI	MV Austa F3 675	1'39.796
6	78 H. OKUBO	Honda CBR600RR	1'39.847
7	6 D. STIRPE	Kawasaki ZX-6R	1'39.891
8	99 L. MORCIANO	Kawasaki ZX-6R	1'39.947
9	47 A. BASSANI	Kawasaki ZX-6R	1'39.988
10	111 K. SMITH	Honda CBR600RR	1'39.988
11	12 C. GOBBI	Yamaha YZF R6	1'40.110
12	57 I. DIONISI	MV Austa F3 675	1'40.280
13	35 S. HILL	Honda CBR600RR	1'40.548
14	88 N. TEROL	MV Austa F3 675	1'40.596
15	127 L. BRIGNOLI	Kawasaki ZX-6R	1'40.705
16	10 N. CALERO	Kawasaki ZX-6R	1'40.869
17	41 A. WAGNER	MV Austa F3 675	1'41.001
18	19 K. WAHR	Honda CBR600RR	1'41.103
19	63 Z. KHAIRUDDIN	Kawasaki ZX-6R	1'41.242
20	82 L. CIPICIANI	Honda CBR600RR	1'41.265
21	23 C. TANGRE	Suzuki GSX-R600	1'41.374
22	96 J. ORELLANA	Honda CBR600RR	1'41.843
23	77 K. RYDE	MV Austa F3 675	1'42.780
24	50 B. ORTT	Honda CBR600RR	1'42.908
25	83 L. EPIS	Kawasaki ZX-6R	1'42.928
26	34 K. MANFREDI	Suzuki GSX-R600	1'46.834
27	7 A. LICCIARDI	Kawasaki ZX-6R	

#### Best Sector & Speed

1	78 H. OKUBO	Honda CBR600RR	236.3
2	127 L. BRIGNOLI	Kawasaki ZX-6R	235.8
3	47 A. BASSANI	Kawasaki ZX-6R	235.3
4	111 K. SMITH	Honda CBR600RR	234.8
5	99 L. MORCIANO	Kawasaki ZX-6R	234.8
6	87 L. ZANETTI	MV Austa F3 675	234.3
7	71 C. BERGMAN	Honda CBR600RR	234.3
8	82 L. CIPICIANI	Honda CBR600RR	234.3
9	86 A. BADOVINI	Honda CBR600RR	234.3
10	81 L. STAPLEFORD	Triumph Daytona 675	233.8
11	12 C. GOBBI	Yamaha YZF R6	231.8
12	63 Z. KHAIRUDDIN	Kawasaki ZX-6R	231.3
13	6 D. STIRPE	Kawasaki ZX-6R	231.3
14	41 A. WAGNER	MV Austa F3 675	231.3
15	10 N. CALERO	Kawasaki ZX-6R	231.3
16	96 J. ORELLANA	Honda CBR600RR	230.3
17	23 C. TANGRE	Suzuki GSX-R600	230.8
18	19 K. WAHR	Honda CBR600RR	229.8
19	88 N. TEROL	MV Austa F3 675	229.8
20	35 S. HILL	Honda CBR600RR	229.8
21	25 A. BALDOLINI	MV Austa F3 675	229.8
22	83 L. EPIS	Kawasaki ZX-6R	229.3
23	57 I. DIONISI	MV Austa F3 675	227.8
24	50 B. ORTT	Honda CBR600RR	225.0
25	77 K. RYDE	MV Austa F3 675	224.1
26	34 K. MANFREDI	Suzuki GSX-R600	198.5

Seg. 1		Seg. 2		Seg. 3		Seg. 4		Seg. 5	
1	86 A. BADOVINI 26.848	1	86 A. BADOVINI 22.789	1	86 A. BADOVINI 13.904	1	78 H. OKUBO 13.246	1	47 A. BASSANI 22.118
2	81 L. STAPLEFORD 26.859	2	87 L. ZANETTI 22.973	2	81 L. STAPLEFORD 13.909	2	71 C. BERGMAN 13.258	2	12 C. GOBBI 22.145
3	99 L. MORCIANO 26.866	3	71 C. BERGMAN 22.991	3	78 H. OKUBO 13.938	3	47 A. BASSANI 13.287	3	86 A. BADOVINI 22.149
4	78 H. OKUBO 26.941	4	25 A. BALDOLINI 23.003	4	47 A. BASSANI 13.961	4	35 S. HILL 13.287	4	81 L. STAPLEFORD 22.177
5	25 A. BALDOLINI 26.957	5	78 H. OKUBO 23.006	5	25 A. BALDOLINI 13.998	5	99 L. MORCIANO 13.327	5	6 D. STIRPE 22.188
6	57 I. DIONISI 26.958	6	6 D. STIRPE 23.031	6	12 C. GOBBI 14.005	6	86 A. BADOVINI 13.328	6	71 C. BERGMAN 22.201
7	111 K. SMITH 27.010	7	81 L. STAPLEFORD 23.046	7	99 L. MORCIANO 14.010	7	6 D. STIRPE 13.328	7	25 A. BALDOLINI 22.202
8	71 C. BERGMAN 27.032	8	99 L. MORCIANO 23.060	8	6 D. STIRPE 14.025	8	25 A. BALDOLINI 13.334	8	111 K. SMITH 22.233
9	87 L. ZANETTI 27.033	9	88 N. TEROL 23.085	9	111 K. SMITH 14.039	9	81 L. STAPLEFORD 13.339	9	57 I. DIONISI 22.257
10	63 Z. KHAIRUDDIN 27.059	10	12 C. GOBBI 23.113	10	82 L. CIPICIANI 14.039	10	111 K. SMITH 13.350	10	78 H. OKUBO 22.262
11	10 N. CALERO 27.069	11	41 A. WAGNER 23.119	11	87 L. ZANETTI 14.053	11	87 L. ZANETTI 13.356	11	82 L. CIPICIANI 22.348
12	47 A. BASSANI 27.109	12	127 L. BRIGNOLI 23.179	12	127 L. BRIGNOLI 14.075	12	57 I. DIONISI 13.417	12	87 L. ZANETTI 22.348
13	6 D. STIRPE 27.119	13	47 A. BASSANI 23.180	13	71 C. BERGMAN 14.080	13	88 N. TEROL 13.435	13	41 A. WAGNER 22.353
14	127 L. BRIGNOLI 27.154	14	57 I. DIONISI 23.190	14	35 S. HILL 14.081	14	127 L. BRIGNOLI 13.449	14	88 N. TEROL 22.357
15	88 N. TEROL 27.191	15	63 Z. KHAIRUDDIN 23.223	15	63 Z. KHAIRUDDIN 14.110	15	12 C. GOBBI 13.449	15	99 L. MORCIANO 22.376
16	82 L. CIPICIANI 27.195	16	111 K. SMITH 23.242	16	57 I. DIONISI 14.158	16	19 K. WAHR 13.582	16	10 N. CALERO 22.380
17	35 S. HILL 27.302	17	23 C. TANGRE 23.269	17	10 N. CALERO 14.198	17	82 L. CIPICIANI 13.599	17	19 K. WAHR 22.476
18	19 K. WAHR 27.308	18	35 S. HILL 23.309	18	19 K. WAHR 14.245	18	96 J. ORELLANA 13.599	18	127 L. BRIGNOLI 22.477
19	12 C. GOBBI 27.330	19	19 K. WAHR 23.326	19	23 C. TANGRE 14.273	19	41 A. WAGNER 13.644	19	23 C. TANGRE 22.499
20	23 C. TANGRE 27.528	20	96 J. ORELLANA 23.413	20	88 N. TEROL 14.277	20	77 K. RYDE 13.658	20	35 S. HILL 22.537
21	41 A. WAGNER 27.580	21	10 N. CALERO 23.444	21	41 A. WAGNER 14.305	21	10 N. CALERO 13.698	21	96 J. ORELLANA 22.560
22	77 K. RYDE 27.708	22	83 L. EPIS 23.562	22	96 J. ORELLANA 14.344	22	23 C. TANGRE 13.715	22	63 Z. KHAIRUDDIN 22.656
23	96 J. ORELLANA 27.825	23	50 B. ORTT 23.578	23	50 B. ORTT 14.401	23	50 B. ORTT 13.741	23	77 K. RYDE 22.729
24	83 L. EPIS 27.851	24	82 L. CIPICIANI 23.582	24	83 L. EPIS 14.410	24	83 L. EPIS 13.792	24	50 B. ORTT 22.748
25	50 B. ORTT 27.991	25	77 K. RYDE 23.899	25	77 K. RYDE 14.470	25	63 Z. KHAIRUDDIN 13.862	25	83 L. EPIS 22.821
26	34 K. MANFREDI 28.073	26	34 K. MANFREDI 25.162	26	34 K. MANFREDI 15.260	26	34 K. MANFREDI 14.561	26	34 K. MANFREDI 23.544
		27	7 A. LICCIARDI 25.859	27	7 A. LICCIARDI 18.412	27	7 A. LICCIARDI 22.216		

18/06/2016

These data/results cannot be reproduced, stored and/or transmitted in whole or in part by any manner of electronic, mechanical, photocopying, recording, broadcasting or otherwise now known or herein after developed without the previous express consent by the copyright owner, except for reproduction in daily press and regular printed publications on sale to the public within 60 days of the event related to those data/results and always provided that copyright symbol appears together as follows below.

© DORNA WSBK ORGANIZATION Srl 2016

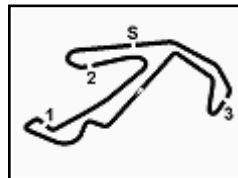
FICR PERUGIA TIMING



Official Tyre Supplier



Official Timekeeper



## Riviera di Rimini Round, 17-18-19 June 2016

### World Supersport - Ideal Times Superpole 1

Misano World Circuit 4.226 m

1 / 1

No. Rider	Nat	Bike	Seg. 1 Diff. 1	Seg. 2 Diff. 2	Seg. 3 Diff. 3	Seg. 4 Diff. 4	Seg. 5 Diff. 5	Ideal Time Best Lap	Pos.	Diff.
1 86 A. BADOVINI	ITA	Honda CBR600RR	26.848	22.789	13.904	13.328 0.064	22.149	1'39.018 1'39.082	2	0.064
2 81 L. STAPLEFORD	GBR	Triumph Daytona 675	26.859	23.046	13.909	13.339	22.177	1'39.330 1'39.330	3	0.000
3 78 H. OKUBO	JPN	Honda CBR600RR	26.941	23.006 0.255	13.938 0.063	13.246	22.262 0.136	1'39.393 1'39.847	7	0.454
4 25 A. BALDOLINI	ITA	MV Agusta F3 675	26.957	23.003	13.998 0.041	13.334	22.202	1'39.494 1'39.535	4	0.041
5 71 C. BERGMAN	SWE	Honda CBR600RR	27.032 0.027	22.991 0.024	14.080	13.258 0.075	22.201	1'39.562 1'39.688	5	0.126
6 99 L. MORCIANO	ITA	Kawasaki ZX-6R	26.866 0.188	23.060	14.010	13.327 0.120	22.376	1'39.639 1'39.947	9	0.308
7 47 A. BASSANI	ITA	Kawasaki ZX-6R	27.109	23.180 0.062	13.961 0.149	13.287 0.062	22.118 0.060	1'39.655 1'39.988	10	0.333
8 6 D. STIRPE	ITA	Kawasaki ZX-6R	27.119	23.031	14.025 0.077	13.328	22.188 0.123	1'39.691 1'39.891	8	0.200
9 87 L. ZANETTI	ITA	MV Agusta F3 675	27.033	22.973 0.033	14.053	13.356	22.348	1'39.763 1'39.796	6	0.033
10 111 K. SMITH	GBR	Honda CBR600RR	27.010	23.242 0.090	14.039 0.024	13.350	22.233	1'39.874 1'39.988	11	0.114
11 57 I. DIONISI	ITA	MV Agusta F3 675	26.958 0.140	23.190 0.089	14.158	13.417 0.071	22.257	1'39.980 1'40.280	13	0.300
12 12 C. GOBBI	ITA	Yamaha YZF R6	27.330	23.113	14.005	13.449	22.145 0.068	1'40.042 1'40.110	12	0.068
13 127 L. BRIGNOLI	ITA	Kawasaki ZX-6R	27.154	23.179	14.075 0.116	13.449 0.255	22.477	1'40.334 1'40.705	16	0.371
14 88 N. TEROL	ESP	MV Agusta F3 675	27.191 0.049	23.085 0.202	14.277	13.435	22.357	1'40.345 1'40.596	15	0.251
15 35 S. HILL	GBR	Honda CBR600RR	27.302 0.015	23.309	14.081 0.017	13.287	22.537	1'40.516 1'40.548	14	0.032
16 82 L. CIPICIANI	ITA	Honda CBR600RR	27.195 0.122	23.582	14.039 0.069	13.599 0.107	22.348 0.204	1'40.763 1'41.265	21	0.502
17 10 N. CALERO	ESP	Kawasaki ZX-6R	27.069	23.444	14.198 0.052	13.698 0.028	22.380	1'40.789 1'40.869	17	0.080
18 63 Z. KHAIRUDDIN	MAS	Kawasaki ZX-6R	27.059	23.223	14.110	13.862	22.656 0.332	1'40.910 1'41.242	20	0.332
19 19 K. WAHR	GER	Honda CBR600RR	27.308 0.093	23.326 0.011	14.245	13.582 0.062	22.476	1'40.937 1'41.103	19	0.166
20 41 A. WAGNER	AUS	MV Agusta F3 675	27.580	23.119	14.305	13.644	22.353	1'41.001 1'41.001	18	0.000
21 23 C. TANGRE	FRA	Suzuki GSX-R600	27.528	23.269 0.090	14.273	13.715	22.499	1'41.284 1'41.374	22	0.090
22 96 J. ORELLANA	ESP	Honda CBR600RR	27.825	23.413	14.344	13.599 0.102	22.560	1'41.741 1'41.843	23	0.102
23 83 L. EPIS	AUS	Kawasaki ZX-6R	27.851	23.562	14.410 0.104	13.792 0.116	22.821 0.272	1'42.436 1'42.928	26	0.492
24 50 B. ORTT	CAN	Honda CBR600RR	27.991 0.078	23.578 0.142	14.401 0.022	13.741	22.748 0.207	1'42.459 1'42.908	25	0.449
25 77 K. RYDE	GBR	MV Agusta F3 675	27.708 0.178	23.899	14.470	13.658	22.729 0.138	1'42.464 1'42.780	24	0.316
26 34 K. MANFREDI	ITA	Suzuki GSX-R600	28.073 0.092	25.162	15.260 0.142	14.561	23.544	1'46.600 1'46.834	27	0.234
<b>Overall Ideal Time</b>			26.848	22.789	13.904	13.246	22.118	1'38.905		

18/06/2016

These data/results cannot be reproduced, stored and/or transmitted in whole or in part by any manner of electronic, mechanical, photocopying, recording, broadcasting or otherwise now known or herein after developed without the previous express consent by the copyright owner, except for reproduction in daily press and regular printed publications on sale to the public within 60 days of the event related to those data/results and always provided that copyright symbol appears together as follows below.  
© DORNA WSBK ORGANIZATION Srl 2016

FICR PERUGIA TIMING



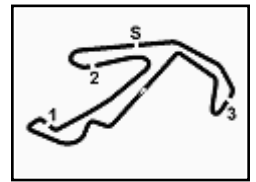
Official Tyre Supplier



Official Timekeeper







## Riviera di Rimini Round, 17-18-19 June 2016

### World Supersport - Chronological Analysis Superpole 1

Misano World Circuit 4.226 m

2 / 2

3	27.663	23.514	14.159	13.874	27.718	1'46.928 P	230.3	11:42'04.651
4	3'43.219	27.248	14.350	13.785	22.690	5'01.292 P	229.8	11:47'05.943
5	27.340	23.411	<b>14.075</b>	<b>13.449</b>	22.576	1'40.851	228.8	11:48'46.794
6	27.159	23.530	14.145	13.562	22.700	1'41.096	228.8	11:50'27.890

16° 10 N. CALERO (1'40.869)								
Lap	Seg. 1	Seg. 2	Seg. 3	Seg. 4	Seg. 5	Lap Time	km/h	Local Time
		24.347	14.410	14.117	22.573		228.3	11:41'04.444
1	27.517	23.690	14.511	13.924	22.652	1'42.294	227.8	11:42'46.738
2	30.467	24.607	14.432	14.045	22.999	1'46.550	227.8	11:44'33.288
3	27.657	24.090	14.323	14.240	30.749	1'51.059 P	227.4	11:46'24.347
4	1'45.936	23.924	<b>14.198</b>	<b>13.698</b>	22.431	3'00.187 P	<b>231.3</b>	11:49'24.534
5	<b>27.069</b>	<b>23.444</b>	14.250	13.726	<b>22.380</b>	<b>1'40.869</b>	228.3	11:51'05.403

17° 41 A. WAGNER (1'41.001)								
Lap	Seg. 1	Seg. 2	Seg. 3	Seg. 4	Seg. 5	Lap Time	km/h	Local Time
		24.963	14.883	14.807	23.106		225.5	11:37'05.786
1	27.815	23.659	14.705	13.898	22.936	1'43.013	225.5	11:38'48.799
2	27.657	23.479	14.339	13.727	22.610	1'41.812	228.8	11:40'30.611
3	30.007	23.934	14.772	14.262	31.072	1'54.047 P	225.5	11:42'24.658
4	3'52.456	29.757	17.780	15.347	30.632	5'25.972 P	212.6	11:47'50.630
5	27.581	23.407	14.355	13.735	22.535	1'41.613	228.3	11:49'32.243
6	<b>27.580</b>	<b>23.119</b>	<b>14.305</b>	<b>13.644</b>	<b>22.353</b>	<b>1'41.001</b>	<b>231.3</b>	11:51'13.244

18° 19 K. WAHR (1'41.103)								
Lap	Seg. 1	Seg. 2	Seg. 3	Seg. 4	Seg. 5	Lap Time	km/h	Local Time
		25.437	14.779	14.128	23.826		226.9	11:36'57.272
1	27.870	23.671	14.280	<b>13.582</b>	22.593	1'41.996	<b>229.8</b>	11:38'39.268
2	27.662	23.372	14.480	14.135	22.799	1'42.448	220.9	11:40'21.716
3	28.441	23.743	14.491	14.104	31.724	1'52.503 P	225.9	11:42'14.219
4	4'02.509	29.445	17.584	15.729	29.889	5'35.156 P	210.9	11:47'49.375
5	27.401	23.337	<b>14.245</b>	<b>13.644</b>	<b>22.476</b>	<b>1'41.103</b>	227.4	11:49'30.478
6	<b>27.308</b>	<b>23.326</b>	14.289	13.628	22.577	1'41.128	226.4	11:51'11.606

19° 63 Z. KHAIRUDDIN (1'41.242)								
Lap	Seg. 1	Seg. 2	Seg. 3	Seg. 4	Seg. 5	Lap Time	km/h	Local Time
		27.422	14.283	13.942	<b>22.656</b>		230.8	11:48'44.149
1	<b>27.059</b>	<b>23.223</b>	<b>14.110</b>	<b>13.862</b>	22.988	1'41.242	<b>231.3</b>	11:50'25.391

20° 82 L. CIPICIANI (1'41.265)								
Lap	Seg. 1	Seg. 2	Seg. 3	Seg. 4	Seg. 5	Lap Time	km/h	Local Time
		24.770	14.183	14.055	23.026		235.3	11:36'55.574
1	27.913	23.822	14.220	<b>13.599</b>	<b>22.348</b>	1'41.902	233.3	11:38'37.476
2	27.317	<b>23.582</b>	14.108	13.706	22.552	1'41.265	<b>234.3</b>	11:40'18.741
3	<b>27.195</b>	23.752	<b>14.039</b>	13.773	22.743	1'41.502	233.8	11:42'00.243
4	29.349	24.063	14.520	14.132	1'36.676	2'58.740 P	229.8	11:44'58.983
5	1'03.341	24.352	14.330	13.822	24.236	2'20.081 C	230.8	11:47'19.064
6	27.916	23.776	14.131	13.657	22.694	1'42.174	231.8	11:49'01.238
7	27.928	23.727	14.061	13.854	22.628	1'42.198	232.3	11:50'43.436

21° 23 C. TANGRE (1'41.374)								
Lap	Seg. 1	Seg. 2	Seg. 3	Seg. 4	Seg. 5	Lap Time	km/h	Local Time
		25.233	14.839	14.453	23.063		225.9	11:36'57.551
1	28.655	23.707	14.437	14.030	22.761	1'43.590	229.8	11:38'41.141
2	27.583	<b>23.269</b>	14.311	13.718	22.532	1'41.413	<b>230.3</b>	11:40'22.554
3	28.179	23.553	14.478	14.104	34.150	1'54.464 P	<b>230.3</b>	11:42'17.018
4	3'32.740	26.227	14.704	14.070	22.789	4'50.530 P	226.9	11:47'07.548
5	<b>27.528</b>	23.359	<b>14.273</b>	<b>13.715</b>	<b>22.499</b>	<b>1'41.374</b>	<b>230.3</b>	11:48'48.922
6	29.432	23.564	14.408	13.813	22.749	1'43.966	228.8	11:50'32.888

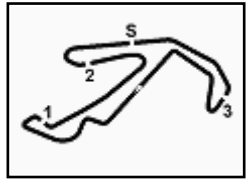
22° 96 J. ORELLANA (1'41.843)								
Lap	Seg. 1	Seg. 2	Seg. 3	Seg. 4	Seg. 5	Lap Time	km/h	Local Time
		25.034	14.758	14.894	23.242		226.9	11:37'06.215
1	27.912	23.657	14.350	13.956	22.871	1'42.746	<b>230.3</b>	11:38'48.961
2	27.853	23.417	14.350	<b>13.599</b>	22.769	1'41.988	228.8	11:40'30.949
3	<b>27.825</b>	<b>23.413</b>	<b>14.344</b>	13.701	<b>22.560</b>	1'41.843	225.9	11:42'12.792
4	30.078	24.577	14.671	14.136	31.314	1'54.776 P	223.6	11:44'07.568
5	2'40.804	31.102	15.097	15.444	22.797	4'05.244 P	223.1	11:48'12.812

23° 77 K. RYDE (1'42.780)								
Lap	Seg. 1	Seg. 2	Seg. 3	Seg. 4	Seg. 5	Lap Time	km/h	Local Time
		25.218	14.755	14.351	23.117		216.0	11:37'32.794
1	27.923	24.591	15.939	22.523	31.450	2'02.426 P	178.2	11:39'35.220
2	2'41.175	26.139	14.693	14.229	22.937	3'59.173 P	219.1	11:43'34.393
3	<b>27.708</b>	23.932	14.534	13.944	<b>22.729</b>	1'42.847	219.5	11:45'17.240
4	29.674	27.460	14.957	13.726	22.825	1'48.642 C	<b>224.1</b>	11:47'05.882

P = Pits In/Out - C = Lap-Time Cancelled

These data/results cannot be reproduced, stored and/or transmitted in whole or in part by any manner of electronic, mechanical, photocopying, recording, broadcasting or otherwise now known or herein after developed without the previous express consent by the copyright owner, except for reproduction in daily press and regular printed publications on sale to the public within 60 days of the event related to those data/results and always provided that copyright symbol appears together as follows below.

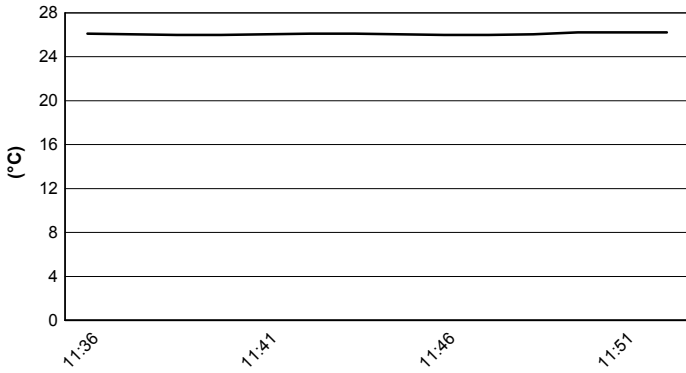
© DORNA WSBK ORGANIZATION Srl 2016



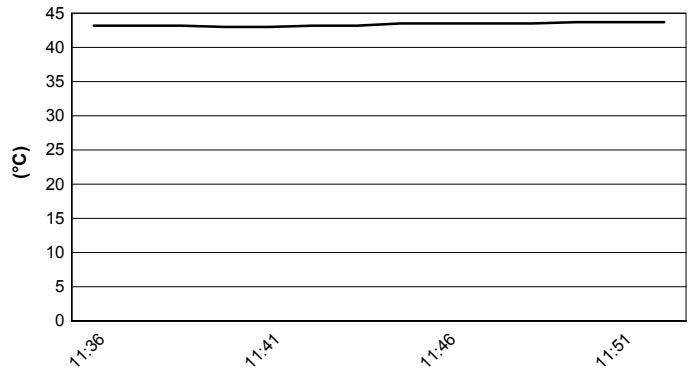
**Riviera di Rimini Round, 17-18-19 June 2016**  
**World Supersport - Weather Report Superpole 1**

Session started 11:35      Session ended 11:53

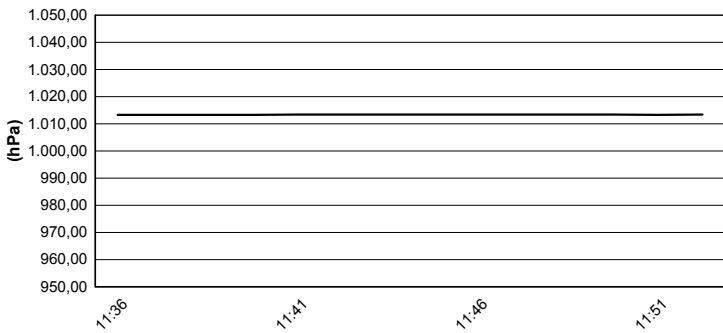
**Air Temperature**



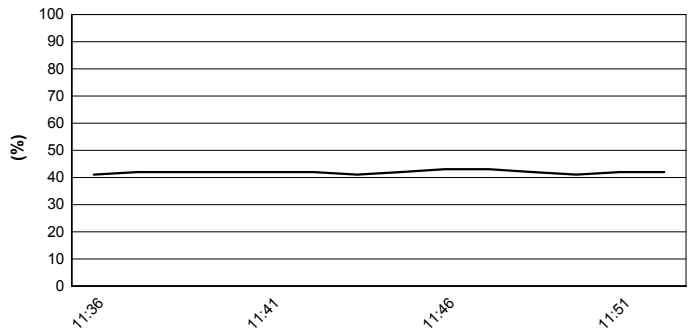
**Track Temperature**



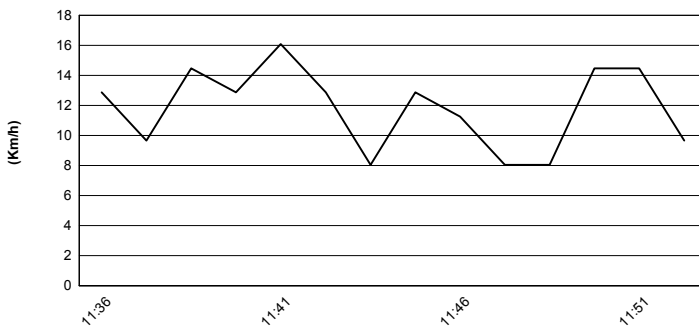
**Air Pressure**



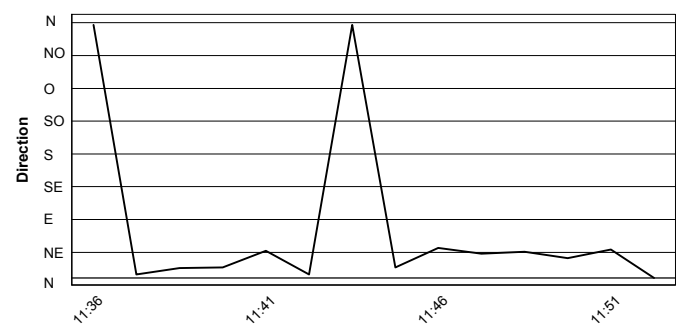
**Humidity**



**Wind Speed**



**Wind Direction**



These data/results cannot be reproduced, stored and/or transmitted in whole or in part by any manner of electronic, mechanical, photocopying, recording, broadcasting or otherwise now known or herein after developed without the previous express consent by the copyright owner, except for reproduction in daily press and regular printed publications on sale to the public within 60 days of the event related to those data/results and always provided that copyright symbol appears together as follows below.  
© DORNA WSBK ORGANIZATION Srl 2016

