

## Riviera di Rimini Round, 17-18-19 June 2016

### Superstock 1000 - Biographical Entry List

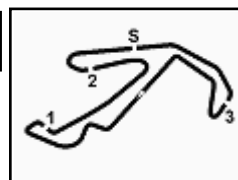
Misano World Circuit 4.226 m

No.	Rider (Abbreviation)			Nat	Bike Team	Wins 2016	Podiums 2016	Pole 2016	Races 2016	Tyres	
	Age	Date of Birth	Place of Birth								
1	2	<b>TAMBURINI Roberto</b> (Tam)	25 15/01/1991	Rimini	ITA	<b>Aprilia RSV4 RF</b> Nuova M2 Racing	3	6	4	12	Pirelli
2	3	<b>SUCHET Sebastien</b> (Suc)	25 12/11/1990	Sensales	SUI	<b>Yamaha YZF R1</b> Berclaz Racing by MotoXracing			1	28	Pirelli
3	5	<b>FACCANI Marco</b> (Fac)	21 30/07/1994	Ravenna	ITA	<b>Ducati Panigale R</b> Triple-M Racing				4	Pirelli
4	8	<b>NOCCO Alessandro</b> (Noc)	19 20/05/1997	Gagliano del Capo	ITA	<b>Kawasaki ZX-10R</b> Team Pedercini				4	Pirelli
5	9	<b>FINSTERBUSCH Toni</b> (Fin)	23 14/06/1993	Leipzig	GER	<b>Kawasaki ZX-10R</b> BCC-Racing Team				4	Pirelli
6	11	<b>GUARNONI Jeremy</b> (Gua)	23 28/02/1993	Toulouse	FRA	<b>Kawasaki ZX-10R</b> Pedercini Racing Kawasaki	4	12	3	41	Pirelli
7	12	<b>RINALDI Michael Ruben</b> (Rin)	20 21/12/1995	Rimini	ITA	<b>Ducati Panigale R</b> Aruba.it Racing - Junior Team		2	2	4	Pirelli
8	13	<b>SANCHIONI Federico</b> (San)	19 11/02/1997	Senigallia	ITA	<b>Kawasaki ZX-10R</b> PUNTO MOTO Corse by Clasitaly				12	Pirelli
9	15	<b>SANDI Federico</b> (San)	26 12/08/1989	Voghera	ITA	<b>Yamaha YZF R1</b> Berclaz Racing by MotoXracing				14	Pirelli
10	16	<b>BLACK Gregg</b> (Bla)	27 26/08/1988	Derby	GBR	<b>Kawasaki ZX-10R</b> MTM / HS Kawasaki				11	Pirelli
11	19	<b>PUFFE Julian</b> (Puf)	20 01/12/1995	Schleiz	GER	<b>Kawasaki ZX-10R</b> Agro On-Benjan-Kawasaki				4	Pirelli
12	23	<b>PONSSON Christophe</b> (Pon)	20 23/12/1995	Lyon	FRA	<b>Kawasaki ZX-10R</b> Pedercini Racing Kawasaki				14	Pirelli
13	26	<b>SBAIZ Marco</b> (Sba)	17 01/04/1999	Latisana	ITA	<b>Kawasaki ZX-10R</b> BWG Racing				5	Pirelli
14*	31	<b>FERRARI Matteo</b> (Fer)	19 12/02/1997	Cesena	ITA	<b>BMW S 1000 RR</b> DMR Racing Team				1	Pirelli
15	32	<b>MOSER Marc</b> (Mos)	22 25/08/1993	Frankfurt Main	GER	<b>Ducati Panigale R</b> Triple-M Racing				26	Pirelli
16	35	<b>DE ROSA Raffaele</b> (DeR)	29 25/03/1987	Napoli	ITA	<b>BMW S 1000 RR</b> Althea BMW Racing Team	2	10	1	12	Pirelli
17	36	<b>MERCADO Leandro</b> (Mer)	24 15/02/1992	Cordoba	ARG	<b>Ducati Panigale R</b> Aruba.it Racing - Junior Team	5	11	2	34	Pirelli
18	43	<b>MASSEI Fabio</b> (Mas)	24 15/07/1991	Rome	ITA	<b>Yamaha YZF R1</b> Team Trasimeno	2	2	1	52	Pirelli
19	44	<b>TUCCI Andrea</b> (Tuc)	21 10/05/1995	Milano	ITA	<b>Yamaha YZF R1</b> Berclaz Racing by MotoXracing				3	Pirelli
20	47	<b>HARTOG Rob</b> (Har)	24 26/03/1992	Abbekerk	NED	<b>Kawasaki ZX-10R</b> Team Hartog - Jenik - Against Cance				4	Pirelli
21	51	<b>VIONNET Eric</b> (Vio)	21 24/06/1994	Lausanne	SUI	<b>BMW S 1000 RR</b> Motos Vionnet				11	Pirelli
22	52	<b>DUWELZ Gauthier</b> (Duw)	22 18/01/1994	Sint Lambrechts Woluwe	BEL	<b>BMW S 1000 RR</b> D.K. Racing				3	Pirelli
23	53	<b>MORRENTINO Nicola Jr.</b> (Mor)	22 08/01/1994	Ariano Irpino	ITA	<b>Yamaha YZF R1</b> PATA Yamaha Official Stock Team				2	Pirelli
24	54	<b>RAZGATLIOGLU Toprak</b> (Raz)	19 16/10/1996	Sakarya	TUR	<b>Kawasaki ZX-10R</b> Kawasaki Puccetti Racing				2	Pirelli
25*	55	<b>MARCHIONNI Fabio</b> (Mar)	26 17/08/1989	San Benedetto del Tronto	ITA	<b>Yamaha YZF R1</b> Speed Action				3	Pirelli
26	58	<b>PUSCEDDU Emanuele</b> (Pus)	20 17/05/1996	Rome	ITA	<b>Ducati Panigale R</b> SK-Racing Team by Barni				4	Pirelli
27	59	<b>MANTOVANI Andrea</b> (Man)	21 30/09/1994	Ferrara	ITA	<b>Yamaha YZF R1</b> Guandalini Racing Yamaha				4	Pirelli
28	66	<b>SCHIAVONI Denni</b> (Sch)	24 13/10/1991	Recanati	ITA	<b>Kawasaki ZX-10R</b> Team Pedercini				2	Pirelli
29	69	<b>MCFADDEN David</b> (McF)	26 04/05/1990	Cape Town	RSA	<b>Kawasaki ZX-10R</b> Agro On-Benjan-Kawasaki		1		26	Pirelli
30	70	<b>VITALI Luca</b> (Vit)	24 30/03/1992	Rimini	ITA	<b>BMW S 1000 RR</b> Team 2R Racing				3	Pirelli
31	74	<b>CALIA Kevin</b> (Cal)	21 09/09/1994	Castel San Pietro	ITA	<b>Aprilia RSV4 RF</b> Nuova M2 Racing		2		16	Pirelli
32	77	<b>TESSELS Wayne</b> (Tes)	22 21/04/1994	Nieuweigen	NED	<b>Kawasaki ZX-10R</b> MTM / HS Kawasaki		1		12	Pirelli
33	81	<b>BERNARDI Alex</b> (Ber)	19 02/12/1996	Cattolica	ITA	<b>BMW S 1000 RR</b> FDA Racing Team					Pirelli
34	82	<b>JONES Luke</b> (Jon)	27 23/10/1988	Hereford	GBR	<b>Kawasaki ZX-10R</b> Agro On-Benjan-Kawasaki				1	
35	87	<b>MARCONI Luca</b> (Mac)	26 13/07/1989	Rimini	ITA	<b>Yamaha YZF R1</b> Team Trasimeno				9	Pirelli
36	91	<b>OPPEDISANO Luca</b> (Opp)	25 14/08/1990	Genova	ITA	<b>Kawasaki ZX-10R</b> Saviofficina Racingteam				4	Pirelli
37	99	<b>CAVALLI Francesco</b> (Cav)	24 27/01/1992	Rome	ITA	<b>Kawasaki ZX-10R</b> PUNTO MOTO Corse by Clasitaly				12	Pirelli
38	144	<b>MAHIAS Lucas</b> (Mah)	27 14/04/1989	Mont de Marsan	FRA	<b>Yamaha YZF R1</b> PATA Yamaha Official Stock Team				4	Pirelli

\* = Wild Card

These data/results cannot be reproduced, stored and/or transmitted in whole or in part by any manner of electronic, mechanical, photocopying, recording, broadcasting or otherwise now known or herein after developed without the previous express consent by the copyright owner, except for reproduction in daily press and regular printed publications on sale to the public within 60 days of the event related to those data/results and always provided that copyright symbol appears together as follows below.

© DORNA WSBK ORGANIZATION Srl 2016



## Riviera di Rimini Round, 17-18-19 June 2016

### Superstock 1000 - Results Free Practice 1st Session

Misano World Circuit 4.226 m

1 / 2

No.	Rider	Nat	Team	Bike	Time	Gap	Rel.	Laps	Speed	
									Avg	Max
1	2 R. TAMBURINI	ITA	Nuova M2 Racing	Aprilia RSV4 RF	<b>1'37.711</b>			12	155,700	<b>260,9</b>
2	12 M. RINALDI	ITA	Aruba.it Racing - Junior Team	Ducati Panigale R	<b>1'37.875</b>	0.164	0.164	15	155,439	<b>262,8</b>
3	35 R. DE ROSA	ITA	Althea BMW Racing Team	BMW S 1000 RR	<b>1'37.922</b>	0.211	0.047	18	155,364	<b>260,9</b>
4	36 L. MERCADO	ARG	Aruba.it Racing - Junior Team	Ducati Panigale R	<b>1'38.378</b>	0.667	0.456	13	154,644	<b>259,6</b>
5	74 K. CALIA	ITA	Nuova M2 Racing	Aprilia RSV4 RF	<b>1'38.454</b>	0.743	0.076	15	154,525	<b>263,4</b>
6	5 M. FACCANI	ITA	Triple-M Racing	Ducati Panigale R	<b>1'38.497</b>	0.786	0.043	14	154,457	<b>259,0</b>
7	70 L. VITALI	ITA	Team 2R Racing	BMW S 1000 RR	<b>1'38.933</b>	1.222	0.436	13	153,777	<b>257,8</b>
8	144 L. MAHIAS	FRA	PATA Yamaha Official Stock Team	Yamaha YZF R1	<b>1'39.103</b>	1.392	0.170	21	153,513	<b>259,0</b>
9	31 M. FERRARI	ITA	DMR Racing Team	BMW S 1000 RR	<b>1'39.161</b>	1.450	0.058	18	153,423	<b>256,5</b>
10	59 A. MANTOVANI	ITA	Guandalini Racing Yamaha	Yamaha YZF R1	<b>1'39.247</b>	1.536	0.086	10	153,290	<b>259,0</b>
11	3 S. SUCHET	SUI	Berclaz Racing by MotoXracing	Yamaha YZF R1	<b>1'39.257</b>	1.546	0.010	13	153,275	<b>255,9</b>
12	54 T. RAZGATLIOGLU	TUR	Kawasaki Puccetti Racing	Kawasaki ZX-10R	<b>1'39.290</b>	1.579	0.033	21	153,224	<b>257,1</b>
13	44 A. TUCCI	ITA	Berclaz Racing by MotoXracing	Yamaha YZF R1	<b>1'39.365</b>	1.654	0.075	11	153,108	<b>257,1</b>
14	55 F. MARCHIONNI	ITA	Speed Action	Yamaha YZF R1	<b>1'39.429</b>	1.718	0.064	12	153,010	<b>252,3</b>
15	77 W. TESSELS	NED	MTM / HS Kawasaki	Kawasaki ZX-10R	<b>1'39.534</b>	1.823	0.105	16	152,848	<b>251,7</b>
16	11 J. GUARNONI	FRA	Pedercini Racing Kawasaki	Kawasaki ZX-10R	<b>1'39.662</b>	1.951	0.128	18	152,652	<b>255,3</b>
17	32 M. MOSER	GER	Triple-M Racing	Ducati Panigale R	<b>1'39.712</b>	2.001	0.050	19	152,575	<b>250,6</b>
18	53 N. MORRENTINO	ITA	PATA Yamaha Official Stock Team	Yamaha YZF R1	<b>1'39.929</b>	2.218	0.217	16	152,244	<b>257,1</b>
19	19 J. PUFFE	GER	Agro On-Benjan-Kawasaki	Kawasaki ZX-10R	<b>1'39.943</b>	2.232	0.014	20	152,223	<b>255,3</b>
20	23 C. PONSSON	FRA	Pedercini Racing Kawasaki	Kawasaki ZX-10R	<b>1'40.078</b>	2.367	0.135	19	152,017	<b>252,3</b>
21	87 L. MARCONI	ITA	Team Trasimeno	Yamaha YZF R1	<b>1'40.172</b>	2.461	0.094	10	151,875	<b>255,9</b>
22	43 F. MASSEI	ITA	Team Trasimeno	Yamaha YZF R1	<b>1'40.214</b>	2.503	0.042	16	151,811	<b>254,1</b>
23	69 D. MCFADDEN	RSA	Agro On-Benjan-Kawasaki	Kawasaki ZX-10R	<b>1'40.222</b>	2.511	0.008	17	151,799	<b>253,5</b>
24	8 A. NOCCO	ITA	Team Pedercini	Kawasaki ZX-10R	<b>1'40.247</b>	2.536	0.025	18	151,761	<b>250,0</b>
25	9 T. FINSTERBUSCH	GER	BCC-Racing Team	Kawasaki ZX-10R	<b>1'40.571</b>	2.860	0.324	18	151,272	<b>253,5</b>
26	66 D. SCHIAVONI	ITA	Team Pedercini	Kawasaki ZX-10R	<b>1'40.648</b>	2.937	0.077	18	151,157	<b>250,6</b>
27	16 G. BLACK	GBR	MTM / HS Kawasaki	Kawasaki ZX-10R	<b>1'40.680</b>	2.969	0.032	18	151,108	<b>251,2</b>
28	47 R. HARTOG	NED	Team Hartog - Jenik - Against Cancer	Kawasaki ZX-10R	<b>1'40.724</b>	3.013	0.044	19	151,042	<b>252,9</b>
29	91 L. OPPEDISANO	ITA	Saviofficina Racingteam	Kawasaki ZX-10R	<b>1'40.807</b>	3.096	0.083	19	150,918	<b>254,7</b>
30	52 G. DUWELZ	BEL	D.K. Racing	BMW S 1000 RR	<b>1'40.815</b>	3.104	0.008	10	150,906	<b>250,0</b>
31	82 L. JONES	GBR	Agro On-Benjan-Kawasaki	Kawasaki ZX-10R	<b>1'41.031</b>	3.320	0.216	21	150,583	<b>255,3</b>
32	99 F. CAVALLI	ITA	PUNTO MOTO Corse by Clasitaly	Kawasaki ZX-10R	<b>1'41.165</b>	3.454	0.134	15	150,384	<b>254,1</b>
33	81 A. BERNARDI	ITA	FDA Racing Team	BMW S 1000 RR	<b>1'41.218</b>	3.507	0.053	21	150,305	<b>253,5</b>
34	13 F. SANCHIONI	ITA	PUNTO MOTO Corse by Clasitaly	Kawasaki ZX-10R	<b>1'41.353</b>	3.642	0.135	18	150,105	<b>250,6</b>
35	51 E. VIONNET	SUI	Motos Vionnet	BMW S 1000 RR	<b>1'41.757</b>	4.046	0.404	11	149,509	<b>257,1</b>
36	58 E. PUSCEDDU	ITA	SK-Racing Team by Barni	Ducati Panigale R	<b>1'42.631</b>	4.920	0.874	7	148,236	<b>251,2</b>
37	26 M. SBAIZ	ITA	BWG Racing	Kawasaki ZX-10R	<b>1'42.822</b>	5.111	0.191	19	147,961	<b>254,7</b>
38	15 F. SANDI	ITA	Berclaz Racing by MotoXracing	Yamaha YZF R1	<b>1'42.860</b>	5.149	0.038	7	147,906	<b>251,7</b>

Qualifying Lap Time (107% of 1'37.711): **1'44.552**

AIR	Humidity:	44%	Temp:	24°C
TRACK	Condition:	Dry	Temp:	34°C

Lap Record:	2015 L.Savadori	1'36.384	157,840	Km/h
Best Lap:	2015 R.De Rosa	1'36.832	157,110	Km/h

These data/results cannot be reproduced, stored and/or transmitted in whole or in part by any manner of electronic, mechanical, photocopying, recording, broadcasting or otherwise now known or herein after developed without the previous express consent by the copyright owner, except for reproduction in daily press and regular printed publications on sale to the public within 60 days of the event related to those data/results and always provided that copyright symbol appears together as follows below.

© DORNA WSBK ORGANIZATION Srl 2016

Start	End	The results are provisional until the end of the time limit for protests and appeals
17/06/2016 09:15	10:01	and the completion of the technical checks.

FICR PERUGIA TIMING



Official Tyre Supplier



Official Timekeeper

## Riviera di Rimini Round, 17-18-19 June 2016

### Superstock 1000 - Results Free Practice 1st Session

Misano World Circuit 4.226 m

2 / 2

#### Session Highlights

09.15.01		Start
09.20.16	Cavalli	Check Transponder
09.21.16	Tucci	Check Transponder
09.33.01	Mahias	Time Deleted - Cut Chicane
09.35.27	Rinaldi	Crashed - Turn 14
09.35.46	Rinaldi	Re-joined
09.36.02	Tessels	Crashed - Turn 2
09.37.23	Tessels	Re-joined
09.39.48	Mercado	Crashed - Turn 4
09.40.25	Pusceddu	Crashed - Turn 10
09.41.31	Pusceddu	Re-joined
09.42.21	Pusceddu	Technical Problem - Turn 14
09.45.36	Tamburini	Time Deleted - Cut Chicane
09.46.45	Pusceddu	Entered Pits
09.55.07	De Rosa	Time Deleted - Cut Chicane
09.57.09	Ponsson	Time Deleted - Cut Chicane
10.01.50		End Of Session

#### Fastest Laps Sequence

No.	Rider	Nat	Team	Bike	Local Time	Time	Gap	Avg
3	S. SUCHET	SUI	Berclaz Racing by MotoXracing	Yamaha YZF R1	09:17'05.914	<b>2'11.696</b>		115,521
91	L. OPPERDISANO	ITA	Saviofficina Racingteam	Kawasaki ZX-10R	09:17'08.831	<b>2'08.365</b>	-3.331	118,518
23	C. PONSSON	FRA	Pedercini Racing Kawasaki	Kawasaki ZX-10R	09:18'42.414	<b>1'44.593</b>	-23.772	145,455
91	L. OPPERDISANO	ITA	Saviofficina Racingteam	Kawasaki ZX-10R	09:18'53.241	<b>1'44.410</b>	-0.183	145,710
77	W. TESSELS	NED	MTM / HS Kawasaki	Kawasaki ZX-10R	09:18'58.531	<b>1'43.554</b>	-0.856	146,915
15	F. SANDI	ITA	Berclaz Racing by MotoXracing	Yamaha YZF R1	09:19'01.706	<b>1'42.860</b>	-0.694	147,906
58	E. PUSCEDDU	ITA	SK-Racing Team by Barni	Ducati Panigale R	09:19'40.501	<b>1'42.631</b>	-0.229	148,236
12	M. RINALDI	ITA	Aruba.it Racing - Junior Team	Ducati Panigale R	09:19'49.250	<b>1'41.392</b>	-1.239	150,047
35	R. DE ROSA	ITA	Althea BMW Racing Team	BMW S 1000 RR	09:20'31.441	<b>1'40.450</b>	-0.942	151,454
12	M. RINALDI	ITA	Aruba.it Racing - Junior Team	Ducati Panigale R	09:21'28.927	<b>1'39.677</b>	-0.773	152,629
12	M. RINALDI	ITA	Aruba.it Racing - Junior Team	Ducati Panigale R	09:23'07.629	<b>1'38.702</b>	-0.975	154,137
12	M. RINALDI	ITA	Aruba.it Racing - Junior Team	Ducati Panigale R	09:24'45.921	<b>1'38.292</b>	-0.410	154,780
2	R. TAMBURINI	ITA	Nuova M2 Racing	Aprilia RSV4 RF	09:27'57.284	<b>1'38.146</b>	-0.146	155,010
2	R. TAMBURINI	ITA	Nuova M2 Racing	Aprilia RSV4 RF	09:44'17.984	<b>1'37.711</b>	-0.435	155,700

These data/results cannot be reproduced, stored and/or transmitted in whole or in part by any manner of electronic, mechanical, photocopying, recording, broadcasting or otherwise now known or herein after developed without the previous express consent by the copyright owner, except for reproduction in daily press and regular printed publications on sale to the public within 60 days of the event related to those data/results and always provided that copyright symbol appears together as follows below.

© DORNA WSBK ORGANIZATION Srl 2016

Start	End	The results are provisional until the end of the time limit for protests and appeals
17/06/2016 09:15	10:01	and the completion of the technical checks.

FICR PERUGIA TIMING

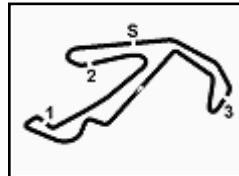


Official Tyre Supplier



Official Timekeeper





## Riviera di Rimini Round, 17-18-19 June 2016

### Superstock 1000 - Ideal Times Free Practice 1st Session

Misano World Circuit 4.226 m

1 / 2

No. Rider	Nat	Bike	Seg. 1 Diff. 1	Seg. 2 Diff. 2	Seg. 3 Diff. 3	Seg. 4 Diff. 4	Seg. 5 Diff. 5	Ideal Time Best Lap	Pos.	Diff.
1 35 R. DE ROSA	ITA	BMW S 1000 RR	27.072	22.059 0.066	13.363 0.034	13.221	21.896 0.211	1'37.611 1'37.922	3	0.311
2 12 M. RINALDI	ITA	Ducati Panigale R	26.864	22.181 0.096	13.444	13.265 0.122	21.903	1'37.657 1'37.875	2	0.218
3 2 R. TAMBURINI	ITA	Aprilia RSV4 RF	27.037 0.028	22.053	13.440	13.251	21.900 0.002	1'37.681 1'37.711	1	0.030
4 36 L. MERCADO	ARG	Ducati Panigale R	27.398 0.003	22.212	13.543 0.069	13.196 0.032	21.856 0.069	1'38.205 1'38.378	4	0.173
5 74 K. CALIA	ITA	Aprilia RSV4 RF	27.273	22.206	13.515 0.046	13.265 0.161	21.970 0.018	1'38.229 1'38.454	5	0.225
6 5 M. FACCANI	ITA	Ducati Panigale R	27.193	22.188 0.012	13.619 0.057	13.345 0.036	22.047	1'38.392 1'38.497	6	0.105
7 144 L. MAHIAS	FRA	Yamaha YZF R1	27.232	22.394 0.089	13.555 0.023	13.427	22.231 0.152	1'38.839 1'39.103	8	0.264
8 70 L. VITALI	ITA	BMW S 1000 RR	27.367 0.009	22.393 0.069	13.572	13.350	22.173	1'38.855 1'38.933	7	0.078
9 59 A. MANTOVANI	ITA	Yamaha YZF R1	27.264 0.013	22.434	13.579 0.207	13.404	22.182 0.164	1'38.863 1'39.247	10	0.384
10 31 M. FERRARI	ITA	BMW S 1000 RR	27.412 0.040	22.415	13.769	13.095 0.046	22.180 0.204	1'38.871 1'39.161	9	0.290
11 54 T. RAZGATLIOGLU	TUR	Kawasaki ZX-10R	27.388 0.023	22.414 0.135	13.639 0.053	13.312 0.029	22.297	1'39.050 1'39.290	12	0.240
12 77 W. TESSELS	NED	Kawasaki ZX-10R	27.208	22.653	13.663 0.210	13.286 0.048	22.256 0.210	1'39.066 1'39.534	15	0.468
13 3 S. SUCHET	SUI	Yamaha YZF R1	27.485 0.080	22.474	13.652 0.057	13.173	22.336	1'39.120 1'39.257	11	0.137
14 44 A. TUCCI	ITA	Yamaha YZF R1	27.446 0.019	22.522 0.122	13.553	13.459 0.076	22.168	1'39.148 1'39.365	13	0.217
15 55 F. MARCHIONNI	ITA	Yamaha YZF R1	27.476 0.009	22.516 0.160	13.655	13.322 0.081	22.210	1'39.179 1'39.429	14	0.250
16 11 J. GUARNONI	FRA	Kawasaki ZX-10R	27.453	22.590	13.648	13.503 0.108	22.304 0.056	1'39.498 1'39.662	16	0.164
17 53 N. MORRENTINO	ITA	Yamaha YZF R1	27.578 0.274	22.603 0.139	13.688	13.264	22.383	1'39.516 1'39.929	18	0.413
18 32 M. MOSER	GER	Ducati Panigale R	27.343	22.724 0.052	13.773	13.480 0.003	22.337	1'39.657 1'39.712	17	0.055
19 23 C. PONSSON	FRA	Kawasaki ZX-10R	27.610 0.080	22.662	13.764 0.052	13.341 0.070	22.412 0.087	1'39.789 1'40.078	20	0.289
20 43 F. MASSEI	ITA	Yamaha YZF R1	27.649	22.593 0.123	13.769 0.116	13.374 0.133	22.420 0.037	1'39.805 1'40.214	22	0.409
21 69 D. MCFADDEN	RSA	Kawasaki ZX-10R	27.463	22.775	13.701 0.005	13.504 0.188	22.402 0.184	1'39.845 1'40.222	23	0.377
22 19 J. PUFFE	GER	Kawasaki ZX-10R	27.709	22.744	13.608 0.047	13.328 0.002	22.505	1'39.894 1'39.943	19	0.049
23 8 A. NOCCO	ITA	Kawasaki ZX-10R	27.446	22.825	13.753	13.650 0.035	22.227 0.311	1'39.901 1'40.247	24	0.346
24 87 L. MARCONI	ITA	Yamaha YZF R1	27.582 0.175	22.739	13.716	13.492	22.468	1'39.997 1'40.172	21	0.175
25 66 D. SCHIAVONI	ITA	Kawasaki ZX-10R	27.696 0.067	22.759	13.770	13.596 0.204	22.525 0.031	1'40.346 1'40.648	26	0.302
26 47 R. HARTOG	NED	Kawasaki ZX-10R	27.848	22.742 0.294	13.748 0.015	13.641	22.436	1'40.415 1'40.724	28	0.309
27 9 T. FINSTERBUSCH	GER	Kawasaki ZX-10R	27.814 0.062	22.744	13.788	13.596	22.482 0.085	1'40.424 1'40.571	25	0.147
28 91 L. OPPEDISANO	ITA	Kawasaki ZX-10R	27.791	22.598 0.020	13.709 0.016	13.832	22.585 0.256	1'40.515 1'40.807	29	0.292
29 16 G. BLACK	GBR	Kawasaki ZX-10R	27.779 0.152	22.718	13.853	13.776	22.402	1'40.528 1'40.680	27	0.152
30 99 F. CAVALLI	ITA	Kawasaki ZX-10R	27.775 0.366	22.827 0.204	13.749	13.598 0.049	22.597	1'40.546 1'41.165	32	0.619
31 52 G. DUWELZ	BEL	BMW S 1000 RR	27.724 0.119	23.047	13.835	13.405 0.100	22.585	1'40.596 1'40.815	30	0.219

17/06/2016

These data/results cannot be reproduced, stored and/or transmitted in whole or in part by any manner of electronic, mechanical, photocopying, recording, broadcasting or otherwise now known or herein after developed without the previous express consent by the copyright owner, except for reproduction in daily press and regular printed publications on sale to the public within 60 days of the event related to those data/results and always provided that copyright symbol appears together as follows below.

© DORNA WSBK ORGANIZATION Srl 2016

FICR PERUGIA TIMING

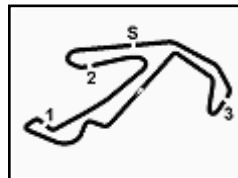


Official Tyre Supplier



Official Timekeeper





## Riviera di Rimini Round, 17-18-19 June 2016

### Superstock 1000 - Ideal Times Free Practice 1st Session

Misano World Circuit 4.226 m

2 / 2

No. Rider	Nat	Bike	Seg. 1 Diff. 1	Seg. 2 Diff. 2	Seg. 3 Diff. 3	Seg. 4 Diff. 4	Seg. 5 Diff. 5	Ideal Time		
								Best Lap	Pos.	Diff.
32 <b>81 A. BERNARDI</b>	ITA	BMW S 1000 RR	27.867 0.323	22.865 0.033	13.728	13.672 0.106	22.547 0.077	<b>1'40.679</b> 1'41.218	33	0.539
33 <b>13 F. SANCHIONI</b>	ITA	Kawasaki ZX-10R	27.815 0.369	22.725 0.018	13.992	13.660 0.088	22.686	<b>1'40.878</b> 1'41.353	34	0.475
34 <b>82 L. JONES</b>	GBR	Kawasaki ZX-10R	27.810 0.104	23.012 0.024	13.762	13.658	22.661	<b>1'40.903</b> 1'41.031	31	0.128
35 <b>51 E. VIONNET</b>	SUI	BMW S 1000 RR	28.020	22.759	13.834 0.041	14.023 0.144	22.723 0.213	<b>1'41.359</b> 1'41.757	35	0.398
36 <b>58 E. PUSCEDDU</b>	ITA	Ducati Panigale R	28.219 0.468	22.787 0.204	13.889 0.123	14.020 0.396	22.525	<b>1'41.440</b> 1'42.631	36	1.191
37 <b>26 M. SBAIZ</b>	ITA	Kawasaki ZX-10R	28.380	23.561	14.136	13.836 0.038	22.871	<b>1'42.784</b> 1'42.822	37	0.038
38 <b>15 F. SANDI</b>	ITA	Yamaha YZF R1	28.426	23.391	14.109	13.981	22.953	<b>1'42.860</b> 1'42.860	38	0.000
<b>Overall Ideal Time</b>			26.864	22.053	13.363	13.095	21.856	<b>1'37.231</b>		

17/06/2016

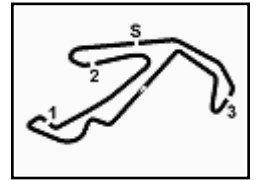
These data/results cannot be reproduced, stored and/or transmitted in whole or in part by any manner of electronic, mechanical, photocopying, recording, broadcasting or otherwise now known or herein after developed without the previous express consent by the copyright owner, except for reproduction in daily press and regular printed publications on sale to the public within 60 days of the event related to those data/results and always provided that copyright symbol appears together as follows below.  
© DORNA WSBK ORGANIZATION Srl 2016



7

Stock1000

102/08



Riviera di Rimini Round, 17-18-19 June 2016 Superstock 1000 - Chronological Analysis Free Practice 1st Session

Misano World Circuit 4.226 m

1 / 5

Table with 10 columns: Lap, Seg. 1-5, Lap Time, km/h, Local Time. Header: 1° 2 R. TAMBURINI (1'37.711)

Table with 10 columns: Lap, Seg. 1-5, Lap Time, km/h, Local Time. Header: 6° 5 M. FACCANI (1'38.497)

Table with 10 columns: Lap, Seg. 1-5, Lap Time, km/h, Local Time. Header: 2° 12 M. RINALDI (1'37.875)

Table with 10 columns: Lap, Seg. 1-5, Lap Time, km/h, Local Time. Header: 7° 70 L. VITALI (1'38.933)

Table with 10 columns: Lap, Seg. 1-5, Lap Time, km/h, Local Time. Header: 3° 35 R. DE ROSA (1'37.922)

Table with 10 columns: Lap, Seg. 1-5, Lap Time, km/h, Local Time. Header: 8° 144 L. MAHIAS (1'39.103)

Table with 10 columns: Lap, Seg. 1-5, Lap Time, km/h, Local Time. Header: 4° 36 L. MERCADO (1'38.378)

Table with 10 columns: Lap, Seg. 1-5, Lap Time, km/h, Local Time. Header: 9° 31 M. FERRARI (1'39.161)

Table with 10 columns: Lap, Seg. 1-5, Lap Time, km/h, Local Time. Header: 5° 74 K. CALIA (1'38.454)

9:19'00.516

P = Pits In/Out - C = Lap-Time Cancelled

These data/results cannot be reproduced, stored and/or transmitted in whole or in part by any manner of electronic, mechanical, photocopying, recording, broadcasting or otherwise now known or herein after developed without the previous express consent by the copyright owner, except for reproduction in daily press and regular printed publications on sale to the public within 60 days of the event related to those data/results and always provided that copyright symbol appears together as follows below.

© DORNA WSBK ORGANIZATION Srl 2016

FICR PERUGIA TIMING



Official Tyre Supplier



Official Timekeeper

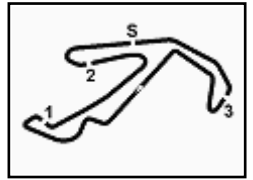










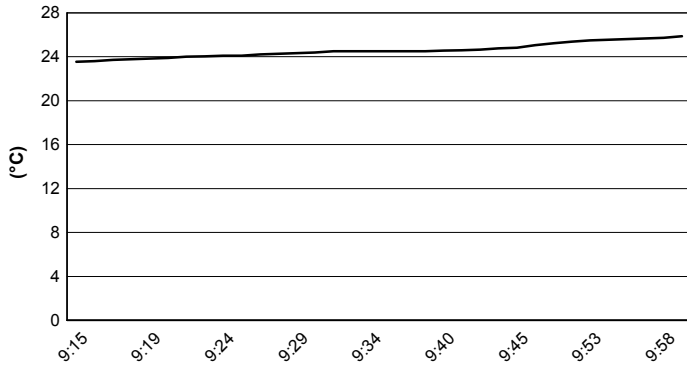


## Riviera di Rimini Round, 17-18-19 June 2016

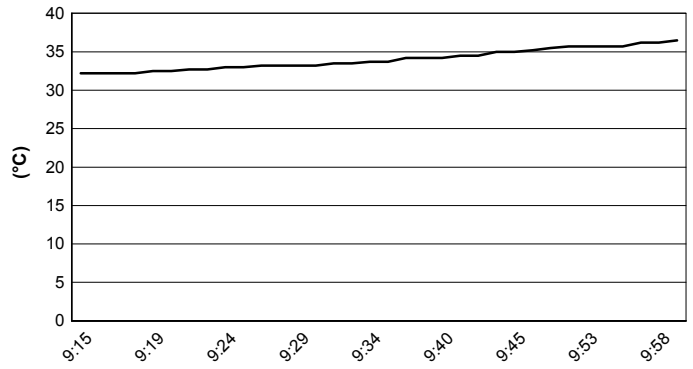
### Superstock 1000 - Weather Report Free Practice 1st Session

Session started 9:15      Session ended 10:01

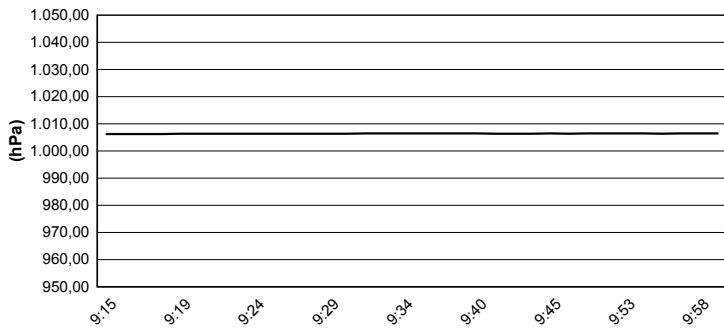
#### Air Temperature



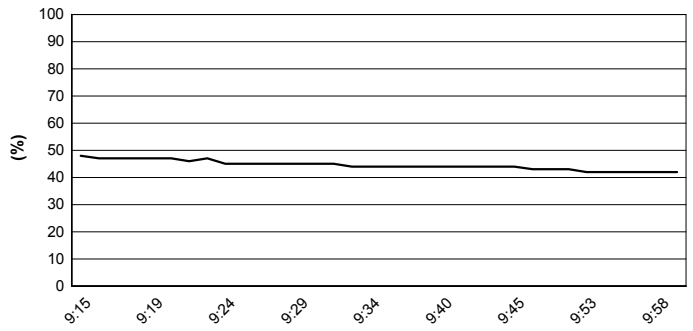
#### Track Temperature



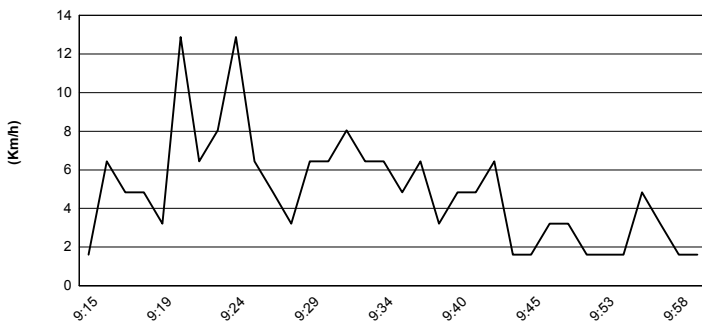
#### Air Pressure



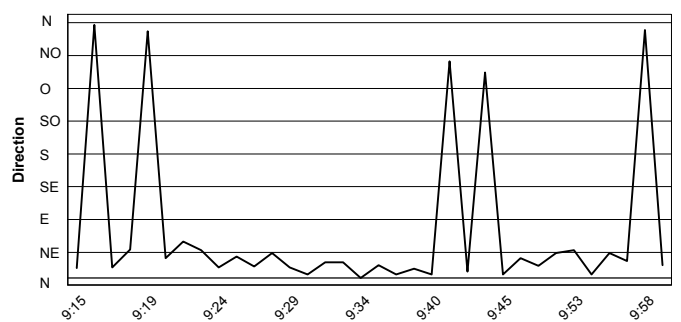
#### Humidity



#### Wind Speed



#### Wind Direction



These data/results cannot be reproduced, stored and/or transmitted in whole or in part by any manner of electronic, mechanical, photocopying, recording, broadcasting or otherwise now known or herein after developed without the previous express consent by the copyright owner, except for reproduction in daily press and regular printed publications on sale to the public within 60 days of the event related to those data/results and always provided that copyright symbol appears together as follows below.  
© DORNA WSBK ORGANIZATION Srl 2016