

Dutch Round, 15-16-17 April 2016 World Superbike - Results Warm Up

No.	Rider	Nat	Team	Bike	Time	Gap	Rel.	Laps	Speed	
									Avg	Max
1	66 T. SYKES	GBR	Kawasaki Racing Team	Kawasaki ZX-10R	1'36.441			8	169,546	285,4
2	7 C. DAVIES	GBR	Aruba.it Racing - Ducati	Ducati Panigale R	1'36.536	0.095	0.095	8	169,379	287,3
3	12 X. FORÉS	ESP	Barni Racing Team	Ducati Panigale R	1'36.859	0.418	0.323	8	168,814	283,9
4	22 A. LOWES	GBR	Pata Yamaha Official WorldSBK Team	Yamaha YZF R1	1'36.919	0.478	0.060	8	168,710	288,0
5	25 J. BROOKES	AUS	Milwaukee BMW	BMW S1000 RR	1'36.974	0.533	0.055	9	168,614	280,5
6	1 J. REA	GBR	Kawasaki Racing Team	Kawasaki ZX-10R	1'36.998	0.557	0.024	9	168,573	285,4
7	34 D. GIUGLIANO	ITA	Aruba.it Racing - Ducati	Ducati Panigale R	1'37.008	0.567	0.010	8	168,555	279,8
8	60 M. VAN DER MARK	NED	Honda World Superbike Team	Honda CBR1000RR SP	1'37.060	0.619	0.052	8	168,465	282,0
9	21 M. REITERBERGER	GER	Althea BMW Racing Team	BMW S1000 RR	1'37.098	0.657	0.038	8	168,399	285,0
10	50 S. GUINTOLI	FRA	Pata Yamaha Official WorldSBK Team	Yamaha YZF R1	1'37.168	0.727	0.070	8	168,278	286,1
11	2 L. CAMIER	GBR	MV Agusta Reparto Corse	MV Agusta 1000 F4	1'37.243	0.802	0.075	8	168,148	278,7
12	69 N. HAYDEN	USA	Honda World Superbike Team	Honda CBR1000RR SP	1'37.287	0.846	0.044	8	168,072	282,7
13	81 J. TORRES	ESP	Althea BMW Racing Team	BMW S1000 RR	1'37.353	0.912	0.066	7	167,958	287,7
14	44 L. MAHIAS	FRA	Pedercini Racing	Kawasaki ZX-10R	1'37.578	1.137	0.225	8	167,571	280,9
15	15 A. DE ANGELIS	RSM	IodaRacing Team	Aprilia RSV4 RF	1'37.837	1.396	0.259	5	167,127	287,7
16	40 R. RAMOS	ESP	Team GoEleven	Kawasaki ZX-10R	1'37.978	1.537	0.141	5	166,886	283,9
17	17 K. ABRAHAM	CZE	Milwaukee BMW	BMW S1000 RR	1'38.134	1.693	0.156	8	166,621	282,7
18	151 M. BAIOTTO	ITA	VFT Racing	Ducati Panigale R	1'38.288	1.847	0.154	8	166,360	274,5
19	32 L. SAVADORI	ITA	IodaRacing Team	Aprilia RSV4 RF	1'38.507	2.066	0.219	3	165,990	287,7
20	94 M. LUSSIANA	FRA	Team ASPI	BMW S1000 RR	1'39.193	2.752	0.686	8	164,842	272,7
21	119 P. SZKOPEK	POL	Team Tóth	Yamaha YZF R1	1'40.169	3.728	0.976	5	163,236	269,3
22	16 J. HOOK	AUS	Grillini Racing Team	Kawasaki ZX-10R	1'41.026	4.585	0.857	5	161,851	274,1
23	56 P. SEBESTYÉN	HUN	Team Tóth	Yamaha YZF R1	1'41.683	5.242	0.657	8	160,806	274,1
24	9 D. SCHMITTER	SUI	Grillini Racing Team	Kawasaki ZX-10R	1'42.089	5.648	0.406	8	160,166	275,5
25	11 S. AL SULAITI	QAT	Pedercini Racing	Kawasaki ZX-10R	1'43.273	6.832	1.184	8	158,330	271,3

Qualifying Lap Time (107% of 1'36.441): **1'43.193**

AIR	Humidity:	75%	Temp:	7°C
TRACK	Condition:	Dry	Temp:	7°C

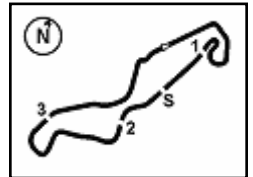
Lap Record:	2015 J.Rea	1'35.889	170,520	Km/h
Best Lap:	2014 L.Baz	1'34.357	173,290	Km/h

17/04/2016 Start 09:30 End 09:48

The results are provisional until the end of the time limit for protests and appeals and the completion of the technical checks.

FCR PERDORA TIMING





Dutch Round, 15-16-17 April 2016 World Superbike - Results Warm Up

Session Highlights

09.22.19		Start Delayed
09.30.11		Start
09.42.11	De Angelis	Crashed - Turn 8
09.42.12	Hook	Crashed - Turn 8
09.43.57	Szkopek	Crashed - Turn 7
09.45.05	Torres	Technical Problem - Turn 5
09.48.24		End Of Session

Fastest Laps Sequence

No.	Rider	Nat	Team	Bike	Local Time	Time	Gap	Avg
1	J. REA	GBR	Kawasaki Racing Team	Kawasaki ZX-10R	09:33'17.732	1'37.757		167,264
25	J. BROOKES	AUS	Milwaukee BMW	BMW S1000 RR	09:33'19.622	1'37.667	-0.090	167,418
7	C. DAVIES	GBR	Aruba.it Racing - Ducati	Ducati Panigale R	09:33'47.453	1'37.612	-0.055	167,512
1	J. REA	GBR	Kawasaki Racing Team	Kawasaki ZX-10R	09:34'54.730	1'36.998	-0.614	168,573
22	A. LOWES	GBR	Pata Yamaha Official WorldSBK Team	Yamaha YZF R1	09:35'28.758	1'36.919	-0.079	168,710
66	T. SYKES	GBR	Kawasaki Racing Team	Kawasaki ZX-10R	09:35'46.017	1'36.441	-0.478	169,546

17/04/2016 Start
09:30

End
09:48

The results are provisional until the end of the time limit for protests and appeals and the completion of the technical checks.

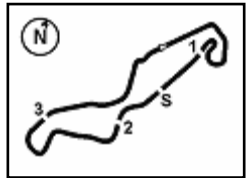
FICR PERIODIC TIMING



Official Tyre Supplier



Official Timekeeper


Dutch Round, 15-16-17 April 2016
World Superbike - Best Sector & Speed Warm Up

TT Circuit Assen 4.542 m

Best Lap

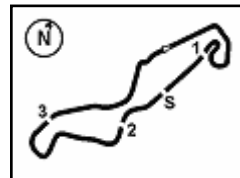
1	66 T. SYKES	Kawasaki ZX-10R	1'36.441
2	7 C. DAVIES	Ducati Panigale R	1'36.536
3	12 X. FORÉS	Ducati Panigale R	1'36.859
4	22 A. LOWES	Yamaha YZF R1	1'36.919
5	25 J. BROOKES	BMW S1000 RR	1'36.974
6	1 J. REA	Kawasaki ZX-10R	1'36.998
7	34 D. GIUGLIANO	Ducati Panigale R	1'37.008
8	60 M. VAN DER MARK	Honda CBR1000RR SP	1'37.060
9	21 M. REITERBERGER	BMW S1000 RR	1'37.098
10	50 S. GUINTOLI	Yamaha YZF R1	1'37.168
11	2 L. CAMIER	MV Austa 1000 F4	1'37.243
12	69 N. HAYDEN	Honda CBR1000RR SP	1'37.287
13	81 J. TORRES	BMW S1000 RR	1'37.353
14	44 L. MAHIAS	Kawasaki ZX-10R	1'37.578
15	15 A. DE ANGELIS	Aorilia RSV4 RF	1'37.837
16	40 R. RAMOS	Kawasaki ZX-10R	1'37.978
17	17 K. ABRAHAM	BMW S1000 RR	1'38.134
18	151 M. BAIOTTO	Ducati Panigale R	1'38.288
19	32 L. SAVADORI	Aorilia RSV4 RF	1'38.507
20	94 M. LUSSIANA	BMW S1000 RR	1'39.193
21	119 P. SZKOPEK	Yamaha YZF R1	1'40.169
22	16 J. HOOK	Kawasaki ZX-10R	1'41.026
23	56 P. SEBESTYÉN	Yamaha YZF R1	1'41.683
24	9 D. SCHMITTER	Kawasaki ZX-10R	1'42.089
25	11 S. AL SULAITI	Kawasaki ZX-10R	1'43.273

Top Speeds

1	22 A. LOWES	Yamaha YZF R1	288.0
2	32 L. SAVADORI	Aorilia RSV4 RF	287.7
3	15 A. DE ANGELIS	Aorilia RSV4 RF	287.7
4	81 J. TORRES	BMW S1000 RR	287.7
5	7 C. DAVIES	Ducati Panigale R	287.3
6	50 S. GUINTOLI	Yamaha YZF R1	286.1
7	66 T. SYKES	Kawasaki ZX-10R	285.4
8	1 J. REA	Kawasaki ZX-10R	285.4
9	21 M. REITERBERGER	BMW S1000 RR	285.0
10	12 X. FORÉS	Ducati Panigale R	283.9
11	40 R. RAMOS	Kawasaki ZX-10R	283.9
12	17 K. ABRAHAM	BMW S1000 RR	282.7
13	69 N. HAYDEN	Honda CBR1000RR SP	282.7
14	60 M. VAN DER MARK	Honda CBR1000RR SP	282.0
15	44 L. MAHIAS	Kawasaki ZX-10R	280.9
16	25 J. BROOKES	BMW S1000 RR	280.5
17	34 D. GIUGLIANO	Ducati Panigale R	279.8
18	2 L. CAMIER	MV Austa 1000 F4	278.7
19	9 D. SCHMITTER	Kawasaki ZX-10R	275.5
20	151 M. BAIOTTO	Ducati Panigale R	274.5
21	56 P. SEBESTYÉN	Yamaha YZF R1	274.1
22	16 J. HOOK	Kawasaki ZX-10R	274.1
23	94 M. LUSSIANA	BMW S1000 RR	272.7
24	11 S. AL SULAITI	Kawasaki ZX-10R	271.3
25	119 P. SZKOPEK	Yamaha YZF R1	269.3

Seg. 1			Seg. 2			Seg. 3			Seg. 4			Seg. 5		
1	7 C. DAVIES	31.656	1	15 A. DE ANGELIS	5.080	1	66 T. SYKES	9.216	1	50 S. GUINTOLI	27.848	1	7 C. DAVIES	22.235
2	69 N. HAYDEN	31.664	2	66 T. SYKES	5.113	2	12 X. FORÉS	9.236	2	25 J. BROOKES	27.886	2	66 T. SYKES	22.253
3	66 T. SYKES	31.760	3	7 C. DAVIES	5.117	3	7 C. DAVIES	9.237	3	7 C. DAVIES	27.943	3	25 J. BROOKES	22.269
4	44 L. MAHIAS	31.767	4	32 L. SAVADORI	5.121	4	2 L. CAMIER	9.262	4	12 X. FORÉS	27.947	4	12 X. FORÉS	22.289
5	22 A. LOWES	31.789	5	81 J. TORRES	5.126	5	50 S. GUINTOLI	9.318	5	22 A. LOWES	27.954	5	22 A. LOWES	22.328
6	1 J. REA	31.815	6	50 S. GUINTOLI	5.131	6	60 M. VAN DER MAR	9.344	6	66 T. SYKES	27.989	6	60 M. VAN DER MAR	22.363
7	34 D. GIUGLIANO	31.853	7	22 A. LOWES	5.140	7	25 J. BROOKES	9.356	7	2 L. CAMIER	28.040	7	50 S. GUINTOLI	22.378
8	50 S. GUINTOLI	31.864	8	1 J. REA	5.141	8	1 J. REA	9.357	8	60 M. VAN DER MAR	28.047	8	34 D. GIUGLIANO	22.397
9	21 M. REITERBERG	31.889	9	21 M. REITERBERG	5.144	9	22 A. LOWES	9.366	9	34 D. GIUGLIANO	28.076	9	1 J. REA	22.412
10	25 J. BROOKES	31.916	10	40 R. RAMOS	5.172	10	34 D. GIUGLIANO	9.366	10	21 M. REITERBERG	28.128	10	81 J. TORRES	22.418
11	2 L. CAMIER	31.943	11	44 L. MAHIAS	5.175	11	21 M. REITERBERG	9.398	11	1 J. REA	28.152	11	21 M. REITERBERG	22.453
12	12 X. FORÉS	31.955	12	12 X. FORÉS	5.181	12	32 L. SAVADORI	9.401	12	15 A. DE ANGELIS	28.191	12	17 K. ABRAHAM	22.477
13	60 M. VAN DER MAR	32.006	13	69 N. HAYDEN	5.183	13	81 J. TORRES	9.416	13	81 J. TORRES	28.206	13	2 L. CAMIER	22.479
14	81 J. TORRES	32.077	14	25 J. BROOKES	5.186	14	69 N. HAYDEN	9.457	14	69 N. HAYDEN	28.211	14	40 R. RAMOS	22.532
15	15 A. DE ANGELIS	32.155	15	17 K. ABRAHAM	5.191	15	94 M. LUSSIANA	9.472	15	44 L. MAHIAS	28.255	15	69 N. HAYDEN	22.656
16	151 M. BAIOTTO	32.218	16	60 M. VAN DER MAR	5.192	16	40 R. RAMOS	9.474	16	40 R. RAMOS	28.320	16	151 M. BAIOTTO	22.701
17	40 R. RAMOS	32.229	17	34 D. GIUGLIANO	5.212	17	17 K. ABRAHAM	9.493	17	151 M. BAIOTTO	28.340	17	44 L. MAHIAS	22.735
18	32 L. SAVADORI	32.369	18	16 J. HOOK	5.263	18	44 L. MAHIAS	9.535	18	17 K. ABRAHAM	28.349	18	94 M. LUSSIANA	22.773
19	17 K. ABRAHAM	32.529	19	2 L. CAMIER	5.283	19	151 M. BAIOTTO	9.558	19	94 M. LUSSIANA	28.410	19	32 L. SAVADORI	22.821
20	94 M. LUSSIANA	32.637	20	56 P. SEBESTYÉN	5.286	20	15 A. DE ANGELIS	9.577	20	32 L. SAVADORI	28.551	20	15 A. DE ANGELIS	22.834
21	16 J. HOOK	33.109	21	94 M. LUSSIANA	5.288	21	119 P. SZKOPEK	9.768	21	119 P. SZKOPEK	28.620	21	119 P. SZKOPEK	23.105
22	119 P. SZKOPEK	33.178	22	151 M. BAIOTTO	5.291	22	16 J. HOOK	9.891	22	16 J. HOOK	28.826	22	9 D. SCHMITTER	23.511
23	56 P. SEBESTYÉN	33.238	23	9 D. SCHMITTER	5.292	23	56 P. SEBESTYÉN	9.974	23	9 D. SCHMITTER	29.364	23	16 J. HOOK	23.635
24	9 D. SCHMITTER	33.573	24	11 S. AL SULAITI	5.361	24	9 D. SCHMITTER	10.005	24	56 P. SEBESTYÉN	29.435	24	56 P. SEBESTYÉN	23.660
25	11 S. AL SULAITI	33.740	25	119 P. SZKOPEK	5.390	25	11 S. AL SULAITI	10.142	25	11 S. AL SULAITI	29.657	25	11 S. AL SULAITI	24.186



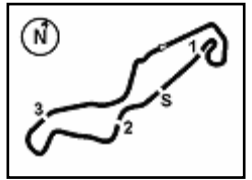


TT Circuit Assen 4.542 m

1 / 1

Dutch Round, 15-16-17 April 2016 World Superbike - Ideal Times Warm Up

No.	Rider	Nat	Bike	Seg. 1 Diff. 1	Seg. 2 Diff. 2	Seg. 3 Diff. 3	Seg. 4 Diff. 4	Seg. 5 Diff. 5	Ideal Time Best Lap	Pos.	Diff.
1	7 C. DAVIES	GBR	Ducati Panigale R	31.656 0.034	5.117 0.106	9.237 0.003	27.943 0.167	22.235 0.038	1'36.188 1'36.536	2	0.348
2	66 T. SYKES	GBR	Kawasaki ZX-10R	31.760	5.113 0.039	9.216 0.057	27.989	22.253 0.014	1'36.331 1'36.441	1	0.110
3	50 S. GUINTOLI	FRA	Yamaha YZF R1	31.864 0.368	5.131 0.020	9.318 0.028	27.848 0.213	22.378	1'36.539 1'37.168	10	0.629
4	22 A. LOWES	GBR	Yamaha YZF R1	31.789 0.216	5.140 0.056	9.366	27.954	22.328 0.070	1'36.577 1'36.919	4	0.342
5	12 X. FORÉS	ESP	Ducati Panigale R	31.955 0.092	5.181 0.049	9.236 0.004	27.947 0.106	22.289	1'36.608 1'36.859	3	0.251
6	25 J. BROOKES	AUS	BMW S1000 RR	31.916 0.155	5.186 0.032	9.356	27.886	22.269 0.174	1'36.613 1'36.974	5	0.361
7	1 J. REA	GBR	Kawasaki ZX-10R	31.815 0.050	5.141 0.017	9.357	28.152 0.045	22.412 0.009	1'36.877 1'36.998	6	0.121
8	34 D. GIUGLIANO	ITA	Ducati Panigale R	31.853 0.035	5.212 0.020	9.366 0.042	28.076	22.397 0.007	1'36.904 1'37.008	7	0.104
9	60 M. VAN DER MARK	NED	Honda CBR1000RR SP	32.006 0.017	5.192 0.025	9.344 0.019	28.047	22.363 0.047	1'36.952 1'37.060	8	0.108
10	2 L. CAMIER	GBR	MV Agusta 1000 F4	31.943 0.096	5.283 0.040	9.262	28.040 0.088	22.479 0.012	1'37.007 1'37.243	11	0.236
11	21 M. REITERBERGER	GER	BMW S1000 RR	31.889	5.144 0.001	9.398	28.128 0.085	22.453	1'37.012 1'37.098	9	0.086
12	69 N. HAYDEN	USA	Honda CBR1000RR SP	31.664 0.092	5.183 0.024	9.457	28.211	22.656	1'37.171 1'37.287	12	0.116
13	81 J. TORRES	ESP	BMW S1000 RR	32.077 0.087	5.126 0.023	9.416	28.206	22.418	1'37.243 1'37.353	13	0.110
14	44 L. MAHIAS	FRA	Kawasaki ZX-10R	31.767	5.175	9.535	28.255 0.074	22.735 0.037	1'37.467 1'37.578	14	0.111
15	40 R. RAMOS	ESP	Kawasaki ZX-10R	32.229 0.015	5.172 0.104	9.474	28.320	22.532 0.132	1'37.727 1'37.978	16	0.251
16	15 A. DE ANGELIS	RSM	Aprilia RSV4 RF	32.155	5.080	9.577	28.191	22.834	1'37.837 1'37.837	15	0.000
17	17 K. ABRAHAM	CZE	BMW S1000 RR	32.529 0.026	5.191	9.493 0.065	28.349 0.004	22.477	1'38.039 1'38.134	17	0.095
18	151 M. BAIOTTO	ITA	Ducati Panigale R	32.218 0.075	5.291 0.009	9.558 0.049	28.340 0.047	22.701	1'38.108 1'38.288	18	0.180
19	32 L. SAVADORI	ITA	Aprilia RSV4 RF	32.369	5.121 0.052	9.401 0.040	28.551	22.821 0.152	1'38.263 1'38.507	19	0.244
20	94 M. LUSSIANA	FRA	BMW S1000 RR	32.637	5.288 0.005	9.472	28.410 0.608	22.773	1'38.580 1'39.193	20	0.613
21	119 P. SZKOPEK	POL	Yamaha YZF R1	33.178 0.076	5.390	9.768	28.620 0.032	23.105	1'40.061 1'40.169	21	0.108
22	16 J. HOOK	AUS	Kawasaki ZX-10R	33.109 0.116	5.263 0.049	9.891	28.826	23.635 0.137	1'40.724 1'41.026	22	0.302
23	56 P. SEBESTYÉN	HUN	Yamaha YZF R1	33.238	5.286 0.048	9.974	29.435 0.042	23.660	1'41.593 1'41.683	23	0.090
24	9 D. SCHMITTER	SUI	Kawasaki ZX-10R	33.573 0.063	5.292 0.063	10.005 0.013	29.364	23.511 0.205	1'41.745 1'42.089	24	0.344
25	11 S. AL SULAITI	QAT	Kawasaki ZX-10R	33.740 0.100	5.361	10.142	29.657	24.186 0.087	1'43.086 1'43.273	25	0.187
Overall Ideal Time				31.656	5.080	9.216	27.848	22.235	1'36.035		

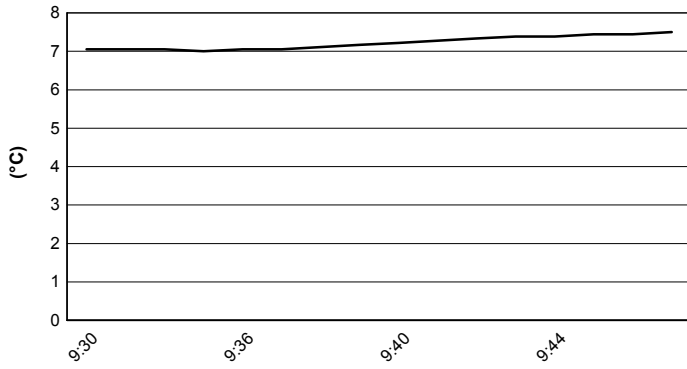


TT Circuit Assen 4.542 m

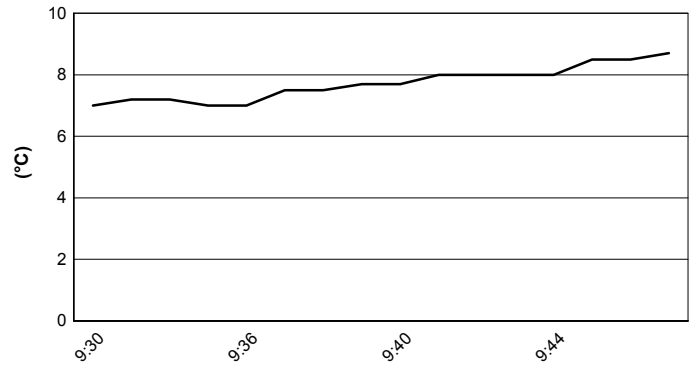
Dutch Round, 15-16-17 April 2016 World Superbike - Weather Report Warm Up

Session started 9:30 Session ended 9:48

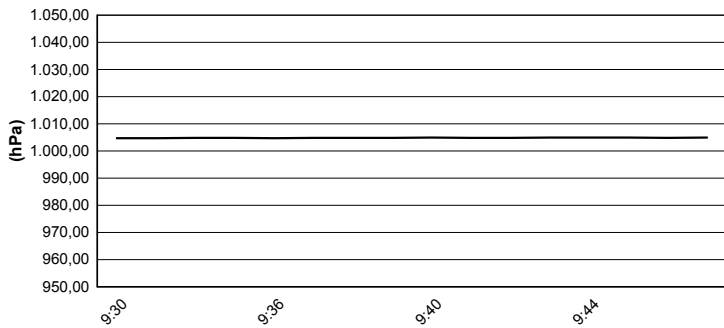
Air Temperature



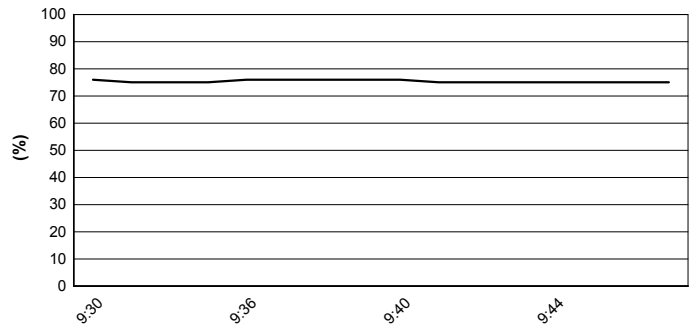
Track Temperature



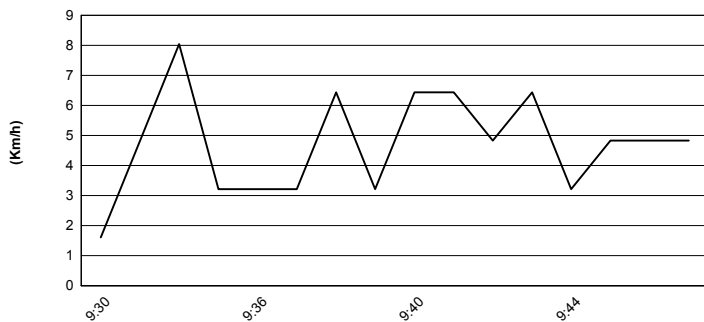
Air Pressure



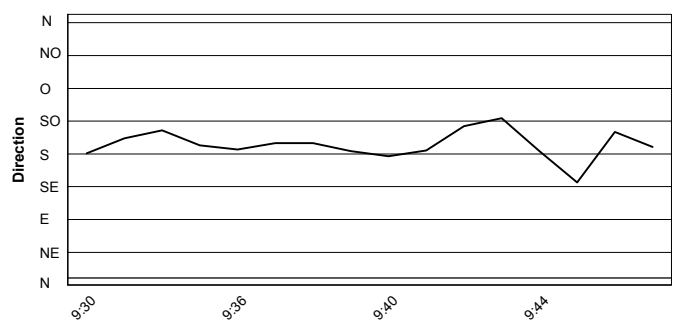
Humidity

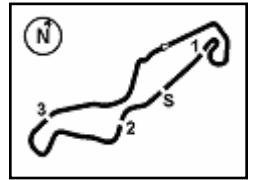


Wind Speed



Wind Direction





Dutch Round, 15-16-17 April 2016

World Superbike - Starting Grid - Race 2

21 Laps x 4,542 km = 95,382 km



1	66 SYKES T. Kawasaki 1'35.440 SP2	2	50 GUINTOLI S. Yamaha 1'36.073 SP2	3	34 GIUGLIANO D. Ducati 1'36.391 SP2
2	1 REA J. Kawasaki 1'36.401 SP2	5	60 VAN DER MARK M. Honda 1'36.643 SP2	6	7 DAVIES C. Ducati 1'36.940 SP2
3	21 REITERBERGER M. BMW 1'37.300 SP2	8	12 FORÉS X. Ducati 1'37.351 SP2	9	81 TORRES J. BMW 1'37.413 SP2
4	69 HAYDEN N. Honda 1'37.449 SP2	11	32 SAVADORI L. Aprilia 1'37.587 SP2	12	22 LOWES A. Yamaha 1'38.214 SP2
5	2 CAMIER L. MV Agusta 1'38.375 SP1	14	25 BROOKES J. BMW 1'38.754 SP1	15	151 BAIOTTO M. Ducati 1'39.305 SP1
6	44 MAHIAS L. Kawasaki 1'39.459 SP1	17	40 RAMOS R. Kawasaki 1'41.339 SP1	18	94 LUSSIANA M. BMW 1'41.743 SP1
7	119 SZKOPEK P. Yamaha 1'42.443 SP1	20	16 HOOK J. Kawasaki 1'43.957 SP1	21	17 ABRAHAM K. BMW SP1
8	56 SEBESTYÉN P. Yamaha 2'00.882 FP	23	9 SCHMITTER D. Kawasaki 2'01.594 FP		

Jury President

..... Race Director