

TT Circuit Assen 4.542 m

1 / 2

Dutch Round, 15-16-17 April 2016

World Supersport - Results Warm Up

No.	Rider	Nat	Team	Bike	Class	Time	Gap	Rel.	Laps	Speed	
										Avg	Max
1	2 P. JACOBSEN	USA	Honda World Supersport Team	Honda CBR600RR		1'39.489			8	164,352	252,5
2	1 K. SOFUOGLU	TUR	Kawasaki Puccetti Racing	Kawasaki ZX-6R		1'39.539	0.050	0.050	8	164,269	247,3
3	81 L. STAPLEFORD	GBR	Profile Racing	Triumph Daytona 675		1'40.128	0.639	0.589	8	163,303	251,4
4	111 K. SMITH	GBR	CIA Landlord Insurance Honda	Honda CBR600RR		1'40.158	0.669	0.030	8	163,254	246,5
5	21 R. KRUMMENACHER	SUI	Kawasaki Puccetti Racing	Kawasaki ZX-6R		1'40.304	0.815	0.146	8	163,016	249,9
6	25 A. BALDOLINI	ITA	Race Department ATK#25	MV Agusta F3 675		1'40.325	0.836	0.021	8	162,982	247,9
7	88 N. TEROL	ESP	Schmidt Racing	MV Agusta F3 675		1'40.458	0.969	0.133	8	162,767	249,3
8	69 O. JEZEK	CZE	Team GoEleven	Kawasaki ZX-6R		1'40.559	1.070	0.101	8	162,603	248,5
9	11 C. GAMARINO	ITA	Team GoEleven	Kawasaki ZX-6R		1'40.950	1.461	0.391	6	161,973	243,7
10	16 J. CLUZEL	FRA	MV Agusta Reparto Corse	MV Agusta F3 675		1'41.021	1.532	0.071	8	161,859	248,2
11	77 K. RYDE	GBR	Ranieri Med - SC Racing	Yamaha YZF R6		1'41.073	1.584	0.052	8	161,776	246,8
12	44 R. ROLFO	ITA	Team Factory Vamag	MV Agusta F3 675		1'41.367	1.878	0.294	7	161,307	249,3
13	19 K. WAHR	GER	Gemar Balloons - Team Lorini	Honda CBR600RR		1'41.393	1.904	0.026	8	161,266	240,7
14	86 A. BADOVINI	ITA	Gemar Balloons - Team Lorini	Honda CBR600RR		1'41.452	1.963	0.059	7	161,172	245,6
15	4 G. REA	GBR	GRT Racing Team	MV Agusta F3 675		1'41.463	1.974	0.011	8	161,154	248,2
16	61 A. ZACCONE	ITA	San Carlo Team Italia	Kawasaki ZX-6R	ESS	1'41.579	2.090	0.116	8	160,970	248,5
17	64 F. CARICASULO	ITA	Bardahl Evan Bros. Honda Racing	Honda CBR600RR		1'41.942	2.453	0.363	3	160,397	247,3
18	6 D. STIRPE	ITA	Scuderia Maranga Racing	Kawasaki ZX-6R	ESS	1'42.140	2.651	0.198	8	160,086	246,2
19	51 B. SCHOUTEN	NED	MVR-Racing	Yamaha YZF R6		1'42.242	2.753	0.102	7	159,926	246,8
20	87 L. ZANETTI	ITA	MV Agusta Reparto Corse	MV Agusta F3 675		1'42.260	2.771	0.018	2	159,898	247,6
21	71 C. BERGMAN	SWE	CIA Landlord Insurance Honda	Honda CBR600RR		1'42.583	3.094	0.323	8	159,395	244,8
22	63 Z. KHAIRUDDIN	MAS	Orelac Racing VerdNatura	Kawasaki ZX-6R		1'42.595	3.106	0.012	6	159,376	251,7
23	10 N. CALERO	ESP	Orelac Racing VerdNatura	Kawasaki ZX-6R		1'42.716	3.227	0.121	7	159,188	245,4
24	55 I. MIKHALCHIK	UKR	DS Junior Team	Kawasaki ZX-6R	ESS	1'43.374	3.885	0.658	2	158,175	239,6
25	35 S. HILL	GBR	CIA Landlord Insurance Honda	Honda CBR600RR		1'43.464	3.975	0.090	8	158,038	242,0
26	47 A. BASSANI	ITA	San Carlo Team Italia	Kawasaki ZX-6R	ESS	1'43.589	4.100	0.125	8	157,847	246,8
27	119 J. CHROBAK	HUN	Schmidt Racing	MV Agusta F3 675	ESS	1'43.968	4.479	0.379	8	157,271	241,8
28	23 C. TANGRE	FRA	Team Yohann Moto Sport	Suzuki GSX-R600	ESS	1'43.982	4.493	0.014	8	157,250	243,1
29	78 H. OKUBO	JPN	CIA Landlord Insurance Honda	Honda CBR600RR		1'44.303	4.814	0.321	8	156,766	243,1
30	74 J. VAN SIKKELERUS	NED	Start Racing	Yamaha YZF R6		1'44.362	4.873	0.059	8	156,678	244,2
31	84 L. CRESSON	BEL	MTM / HS Kawasaki	Kawasaki ZX-6R	ESS	1'44.706	5.217	0.344	8	156,163	244,5
32	12 C. GOBBI	ITA	VFT Racing	Yamaha YZF R6	ESS	1'44.839	5.350	0.133	7	155,965	244,5
33	96 J. ORELLANA	ESP	WILSport Racedays Honda	Honda CBR600RR	ESS	1'45.506	6.017	0.667	7	154,979	234,9
34	7 A. LICCIARDI	BEL	R2 MotorRacing Team	Kawasaki ZX-6R	ESS	1'46.496	7.007	0.990	8	153,538	239,3
35	50 B. ORTT	CAN	WILSport Racedays Honda	Honda CBR600RR	ESS	1'46.777	7.288	0.281	8	153,134	238,8
36	83 L. EPIS	AUS	Response RE Racing	Kawasaki ZX-6R		1'52.238	12.749	5.461	6	145,683	215,0

Qualifying Lap Time (107% of 1'39.489): 1'46.454

AIR	Humidity:	79%	Temp:	6°C
TRACK	Condition:	Dry	Temp:	6°C

Lap Record:	2015 J.Cluzel	1'38.184	166,540	Km/h
Best Lap:	2015 J.Cluzel	1'38.015	166,820	Km/h

Start
17/04/2016 09:00

End
09:18

The results are provisional until the end of the time limit for protests and appeals and the completion of the technical checks.

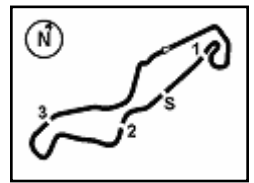
FICR PERUGIA TIMING



Official Tyre Supplier



Official Timekeeper



Dutch Round, 15-16-17 April 2016

World Supersport - Results Warm Up

Session Highlights

09.00.07		Start
09.07.33	Zanetti	Crashed - Rider OK - Turn 9
09.15.14	Epis	Crashed - Turn 5
09.18.21		End Of Session

Fastest Laps Sequence

No.	Rider	Nat	Team	Bike	Local Time	Time	Gap	Avg
1	K. SOFUOGLU	TUR	Kawasaki Puccetti Racing	Kawasaki ZX-6R	09:03'32.567	1'40.916		162,028
1	K. SOFUOGLU	TUR	Kawasaki Puccetti Racing	Kawasaki ZX-6R	09:05'12.691	1'40.124	-0.792	163,309
1	K. SOFUOGLU	TUR	Kawasaki Puccetti Racing	Kawasaki ZX-6R	09:10'14.251	1'39.746	-0.378	163,928
1	K. SOFUOGLU	TUR	Kawasaki Puccetti Racing	Kawasaki ZX-6R	09:11'53.922	1'39.671	-0.075	164,052
1	K. SOFUOGLU	TUR	Kawasaki Puccetti Racing	Kawasaki ZX-6R	09:13'33.509	1'39.587	-0.084	164,190
1	K. SOFUOGLU	TUR	Kawasaki Puccetti Racing	Kawasaki ZX-6R	09:15'13.048	1'39.539	-0.048	164,269
2	P. JACOBSEN	USA	Honda World Supersport Team	Honda CBR600RR	09:16'11.444	1'39.489	-0.050	164,352

17/04/2016 Start
09:00

End
09:18

The results are provisional until the end of the time limit for protests and appeals and the completion of the technical checks.

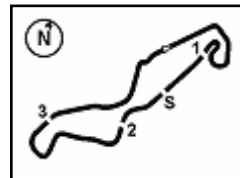
FICR PERUGIA TIMING



Official Tyre Supplier



Official Timekeeper



TT Circuit Assen 4.542 m

Dutch Round, 15-16-17 April 2016

World Supersport - Ideal Times Warm Up

1 / 2

No.	Rider	Nat	Bike	Seg. 1 Diff. 1	Seg. 2 Diff. 2	Seg. 3 Diff. 3	Seg. 4 Diff. 4	Seg. 5 Diff. 5	Ideal Time Best Lap	Pos.	Diff.
1	2 P. JACOBSEN	USA	Honda CBR600RR	32.683 0.114	5.664 0.061	9.485	28.561	22.905 0.016	1'39.298 1'39.489	1	0.191
2	1 K. SOFUOGLU	TUR	Kawasaki ZX-6R	32.645 0.006	5.866	9.425	28.598	22.927 0.072	1'39.461 1'39.539	2	0.078
3	111 K. SMITH	GBR	Honda CBR600RR	32.663 0.019	5.855 0.008	9.529 0.074	28.419	23.362 0.229	1'39.828 1'40.158	4	0.330
4	81 L. STAPLEFORD	GBR	Triumph Daytona 675	32.882	5.733 0.068	9.636 0.044	28.849 0.004	22.912	1'40.012 1'40.128	3	0.116
5	21 R. KRUMMENACHER	SUI	Kawasaki ZX-6R	32.849 0.141	5.802 0.048	9.499	28.732 0.056	23.177	1'40.059 1'40.304	5	0.245
6	25 A. BALDOLINI	ITA	MV Agusta F3 675	32.853 0.160	5.831 0.079	9.476	28.777	23.149	1'40.086 1'40.325	6	0.239
7	69 O. JEZEK	CZE	Kawasaki ZX-6R	32.812	5.846 0.079	9.590 0.015	28.524 0.292	23.401	1'40.173 1'40.559	8	0.386
8	88 N. TEROL	ESP	MV Agusta F3 675	33.073 0.070	5.819	9.537	28.737	23.222	1'40.388 1'40.458	7	0.070
9	44 R. ROLFO	ITA	MV Agusta F3 675	33.163 0.266	5.911 0.043	9.633 0.018	29.010 0.049	23.111 0.163	1'40.828 1'41.367	12	0.539
10	16 J. CLUZEL	FRA	MV Agusta F3 675	33.116	5.813 0.055	9.708	28.987 0.087	23.234 0.021	1'40.858 1'41.021	10	0.163
11	11 C. GAMARINO	ITA	Kawasaki ZX-6R	33.145	5.917 0.017	9.616	28.839	23.416	1'40.933 1'40.950	9	0.017
12	77 K. RYDE	GBR	Yamaha YZF R6	33.324 0.037	5.846	9.634	28.947	23.285	1'41.036 1'41.073	11	0.037
13	4 G. REA	GBR	MV Agusta F3 675	33.241 0.056	5.817 0.086	9.677 0.053	29.040	23.493	1'41.268 1'41.463	15	0.195
14	19 K. WAHR	GER	Honda CBR600RR	33.140	5.928 0.022	9.755 0.026	28.972	23.505 0.045	1'41.300 1'41.393	13	0.093
15	61 A. ZACCONE	ITA	Kawasaki ZX-6R	33.297 0.058	5.818 0.042	9.764 0.041	28.871 0.120	23.568	1'41.318 1'41.579	16	0.261
16	86 A. BADOVINI	ITA	Honda CBR600RR	33.228	5.845 0.054	9.847	29.041	23.437	1'41.398 1'41.452	14	0.054
17	51 B. SCHOUTEN	NED	Yamaha YZF R6	33.535 0.302	5.861	9.893	28.998	23.653	1'41.940 1'42.242	19	0.302
18	64 F. CARICASULO	ITA	Honda CBR600RR	33.475	5.800	9.976	29.070	23.621	1'41.942 1'41.942	17	0.000
19	87 L. ZANETTI	ITA	MV Agusta F3 675	33.523 0.176	5.863 0.036	9.855 0.045	29.203	23.559	1'42.003 1'42.260	20	0.257
20	6 D. STIRPE	ITA	Kawasaki ZX-6R	33.583	5.859	9.889	29.189	23.620	1'42.140 1'42.140	18	0.000
21	63 Z. KHAIRUDDIN	MAS	Kawasaki ZX-6R	33.674	5.754	9.845 0.176	29.103	23.854 0.189	1'42.230 1'42.595	22	0.365
22	71 C. BERGMAN	SWE	Honda CBR600RR	33.437	5.879 0.022	9.816	29.408	23.846 0.175	1'42.386 1'42.583	21	0.197
23	10 N. CALERO	ESP	Kawasaki ZX-6R	33.624 0.085	5.890	9.968	29.246	23.903	1'42.631 1'42.716	23	0.085
24	35 S. HILL	GBR	Honda CBR600RR	33.866	5.904 0.042	9.881	29.449 0.218	23.934 0.170	1'43.034 1'43.464	25	0.430
25	55 I. MIKHALCHIK	UKR	Kawasaki ZX-6R	34.246	6.033	10.180	29.128	23.787	1'43.374 1'43.374	24	0.000
26	47 A. BASSANI	ITA	Kawasaki ZX-6R	34.123	5.872 0.006	9.898 0.040	29.624 0.030	23.996	1'43.513 1'43.589	26	0.076
27	119 J. CHROBAK	HUN	MV Agusta F3 675	34.267	5.950 0.064	9.935	29.431 0.299	24.022	1'43.605 1'43.968	27	0.363
28	23 C. TANGRE	FRA	Suzuki GSX-R600	34.076	5.931 0.031	10.021 0.052	29.561	24.195 0.115	1'43.784 1'43.982	28	0.198
29	74 J. VAN SIKKELERUS	NED	Yamaha YZF R6	34.304	5.883 0.066	10.105 0.051	29.640	24.153 0.160	1'44.085 1'44.362	30	0.277
30	84 L. CRESSON	BEL	Kawasaki ZX-6R	34.084 0.168	5.893 0.061	10.009 0.069	29.870 0.163	24.306 0.083	1'44.162 1'44.706	31	0.544
31	78 H. OKUBO	JPN	Honda CBR600RR	34.191 0.036	5.904	10.091	29.751	24.258 0.072	1'44.195 1'44.303	29	0.108
32	12 C. GOBBI	ITA	Yamaha YZF R6	34.289	5.904 0.007	10.145 0.103	29.699 0.248	24.271 0.173	1'44.308 1'44.839	32	0.531
33	96 J. ORELLANA	ESP	Honda CBR600RR	34.416	5.991 0.025	10.306	30.270	24.498	1'45.481 1'45.506	33	0.025

17/04/2016

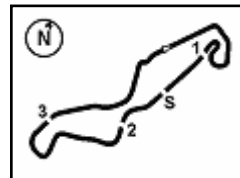
FICR PERUGIA TIMING



Official Tyre Supplier



Official Timekeeper



TT Circuit Assen 4.542 m

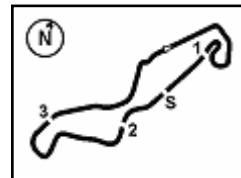
2 / 2

Dutch Round, 15-16-17 April 2016

World Supersport - Ideal Times Warm Up

No.	Rider	Nat	Bike	Seg. 1 Diff. 1	Seg. 2 Diff. 2	Seg. 3 Diff. 3	Seg. 4 Diff. 4	Seg. 5 Diff. 5	Ideal Time Best Lap	Pos.	Diff.
34	7 A. LICCIARDI	BEL	Kawasaki ZX-6R	34.654 0.043	6.037	10.599 0.025	30.247 0.120	24.694 0.077	1'46.231 1'46.496	34	0.265
35	50 B. ORTT	CAN	Honda CBR600RR	34.928	5.992 0.035	10.299 0.185	30.490	24.684 0.164	1'46.393 1'46.777	35	0.384
36	83 L. EPIS	AUS	Kawasaki ZX-6R	37.570	7.084 0.189	10.503 0.265	31.184	25.385 0.058	1'51.726 1'52.238	36	0.512
Overall Ideal Time				32.645	5.664	9.425	28.419	22.905	1'39.058		





TT Circuit Assen 4.542 m

Dutch Round, 15-16-17 April 2016

World Supersport - Chronological Analysis Warm Up

1	36.268	6.091	11.653	32.453	26.178	228.2	9:02'01.706	
2	35.676	5.958	10.962	31.407	25.993	1'50.588	239.6	9:03'52.294
3	34.644	5.993	10.596	30.452	24.688	1'47.410	238.8	9:05'39.704
4	34.412	6.002	10.271	30.095	24.294	1'45.297	238.8	9:07'25.001
5	34.304	5.949	10.156	29.640	24.313	1'44.362	241.5	9:10'54.850
6	34.318	5.962	10.378	30.075	24.153	1'44.886	237.5	9:12'39.736
7	34.357	5.883	10.347	30.343	24.969	1'45.899	244.2	9:14'25.635
8	46.176	6.698	10.655	30.538	24.676	1'58.743	218.7	9:16'24.378

31° 84 L. CRESSON (1'44.706)								
Lap	Seg. 1	Seg. 2	Seg. 3	Seg. 4	Seg. 5	Lap Time	km/h	Local Time
		6.141	11.643	32.021	25.428		227.9	9:01'56.489
1	35.321	5.953	10.214	30.767	25.037	1'47.292	242.3	9:03'43.781
2	34.803	5.969	10.187	30.541	24.451	1'45.951	241.8	9:05'29.732
3	34.914	5.893	10.737	30.439	24.560	1'46.543	244.5	9:07'16.275
4	34.084	5.964	10.304	30.353	24.771	1'45.476	242.3	9:09'01.751
5	34.511	5.921	10.209	29.870	24.317	1'44.828	244.0	9:10'46.579
6	34.284	5.960	10.367	29.950	24.306	1'44.867	242.6	9:12'31.446
7	34.308	5.973	10.009	30.031	24.480	1'44.801	240.4	9:14'16.247
8	34.252	5.954	10.078	30.033	24.389	1'44.706	241.5	9:16'00.953

32° 12 C. GOBBI (1'44.839)								
Lap	Seg. 1	Seg. 2	Seg. 3	Seg. 4	Seg. 5	Lap Time	km/h	Local Time
		6.183	11.533	31.481	25.789		215.4	9:02'26.423
1	35.759	5.979	10.634	30.356	24.985	1'47.713	238.5	9:04'14.136
2	35.608	5.953	10.235	30.111	24.271	1'46.178	236.7	9:06'00.314
3	41.224	5.911	10.145	29.730	20.132	1'47.142 P	241.8	9:07'47.456
4	1'52.355	5.904	10.508	30.154	24.383	3'03.304 P	244.5	9:10'50.760
5	34.978	5.988	10.279	29.699	24.327	1'45.271	239.6	9:12'36.031
6	34.289	5.911	10.248	29.947	24.444	1'44.839	242.0	9:14'20.870
7	34.555	5.937	10.455	30.070	24.581	1'45.598	241.0	9:16'06.468

33° 96 J. ORELLANA (1'45.506)								
Lap	Seg. 1	Seg. 2	Seg. 3	Seg. 4	Seg. 5	Lap Time	km/h	Local Time
		6.145	11.162	31.953	26.419		224.8	9:02'16.403
1	36.215	6.071	11.006	31.414	26.034	1'50.740	234.4	9:04'07.143
2	35.625	6.093	10.757	31.152	25.337	1'48.964	230.9	9:05'56.107
3	36.024	6.167	10.373	30.803	25.419	1'48.786	232.6	9:07'44.893
4	35.075	5.991	10.388	31.154	24.679	1'47.287	234.9	9:09'32.180
5	35.556	6.052	10.806	34.234	28.578	1'55.226	233.4	9:11'27.406
6	34.857	6.021	10.548	30.633	25.160	1'47.219	232.9	9:13'14.625
7	34.416	6.016	10.306	30.270	24.498	1'45.506	233.9	9:15'00.131

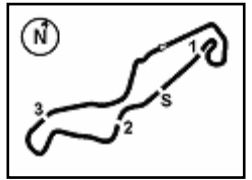
34° 7 A. LICCIARDI (1'46.496)								
Lap	Seg. 1	Seg. 2	Seg. 3	Seg. 4	Seg. 5	Lap Time	km/h	Local Time
		6.280	11.322	31.716	25.330		230.1	9:01'54.280
1	35.614	6.082	10.747	30.343	24.975	1'47.761	236.7	9:03'42.041
2	35.192	6.222	10.736	30.510	24.694	1'47.354	234.6	9:05'29.395
3	34.943	6.091	10.905	30.750	24.972	1'47.661	236.2	9:07'17.056
4	34.697	6.037	10.624	30.367	24.771	1'46.496	239.3	9:09'03.552
5	34.983	6.060	10.711	30.460	24.879	1'47.093	238.3	9:10'50.645
6	35.043	6.093	10.821	30.247	24.850	1'47.054	233.6	9:12'37.699
7	34.654	6.056	10.599	30.422	24.850	1'46.581	236.2	9:14'24.280
8	34.980	6.160	10.777	30.297	25.190	1'47.404	233.4	9:16'11.684

35° 50 B. ORTT (1'46.777)								
Lap	Seg. 1	Seg. 2	Seg. 3	Seg. 4	Seg. 5	Lap Time	km/h	Local Time
		6.057	11.870	33.135	26.523		230.6	9:02'00.339
1	37.263	6.026	10.958	31.584	25.686	1'51.517	237.8	9:03'51.856
2	36.482	5.992	10.620	31.005	25.338	1'49.437	238.8	9:05'41.293
3	36.049	6.071	10.651	31.308	25.263	1'49.342	235.4	9:07'30.635
4	35.555	6.075	10.407	30.772	24.941	1'47.750	235.2	9:09'18.385
5	35.639	6.124	10.450	30.980	24.865	1'48.058	233.4	9:11'06.443
6	35.579	6.001	10.299	30.706	24.684	1'47.269	238.3	9:12'53.712
7	34.928	6.027	10.484	30.490	24.848	1'46.777	236.5	9:14'40.489
8	35.288	6.072	10.344	30.502	24.706	1'46.912	235.2	9:16'27.401

36° 83 L. EPIS (1'52.238)								
Lap	Seg. 1	Seg. 2	Seg. 3	Seg. 4	Seg. 5	Lap Time	km/h	Local Time
		7.084	12.129	34.988	23.287		205.3	9:01'56.680
1	1'36.246	7.479	11.532	34.143	27.422	2'56.822 P	200.7	9:04'53.502
2	39.373	7.528	10.842	32.599	26.940	1'57.282	206.1	9:06'50.784
3	38.936	7.503	10.805	32.974	26.062	1'56.280	207.9	9:08'47.064
4	38.165	7.330	10.604	32.386	25.633	1'54.118	213.0	9:10'41.182
5	37.971	7.212	10.503	31.441	25.385	1'52.512	215.0	9:12'33.694
6	37.570	7.273	10.768	31.184	25.443	1'52.238	212.6	9:14'25.932

P = Pits In/Out - C = Lap-Time Cancelled





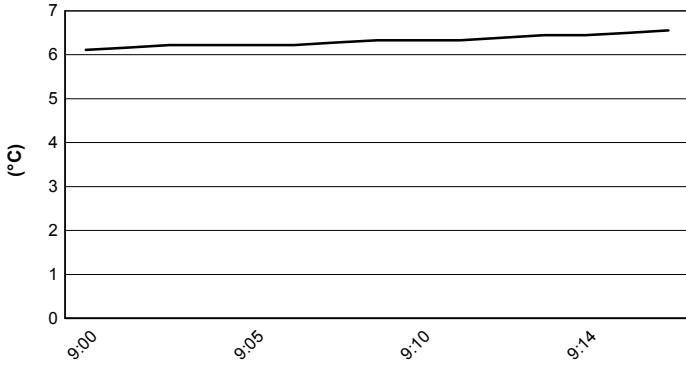
TT Circuit Assen 4.542 m

Dutch Round, 15-16-17 April 2016

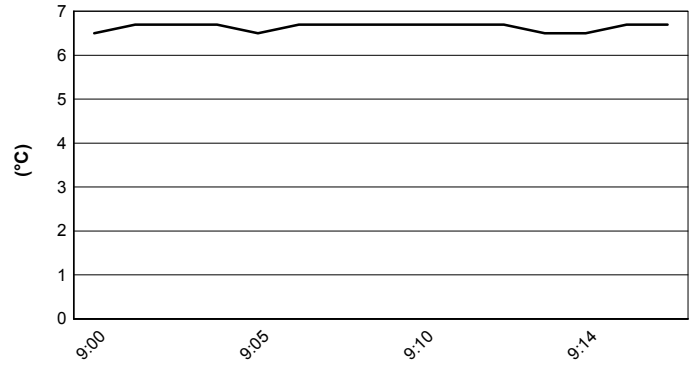
World Supersport - Weather Report Warm Up

Session started 9:00 Session ended 9:18

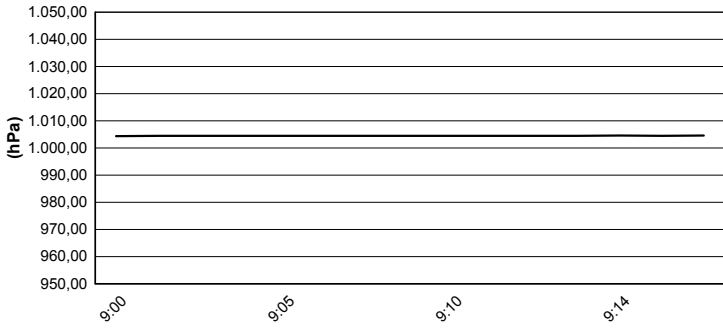
Air Temperature



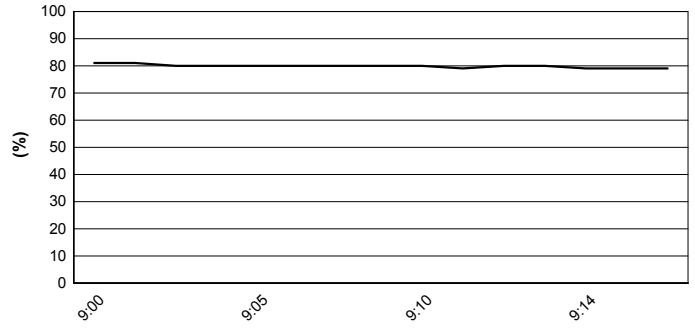
Track Temperature



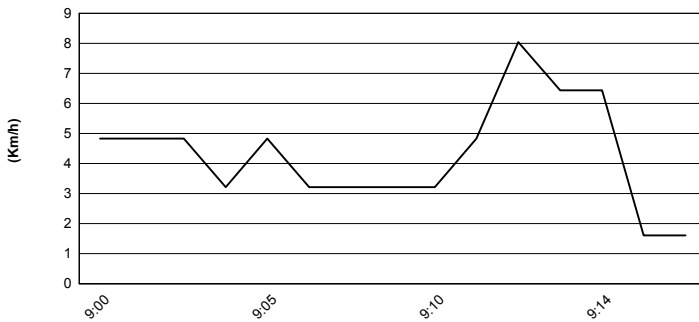
Air Pressure



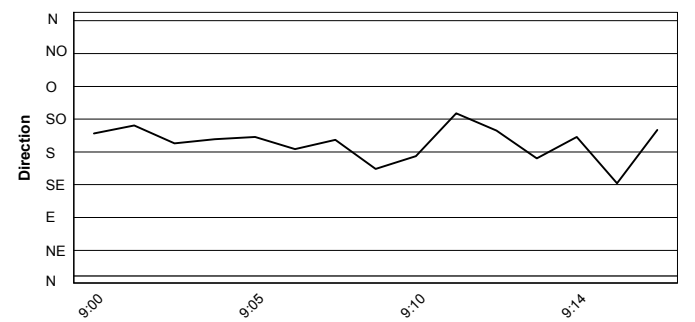
Humidity

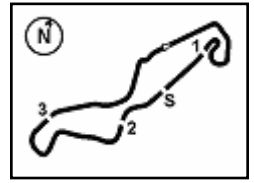


Wind Speed



Wind Direction





TT Circuit Assen 4.542 m

Dutch Round, 15-16-17 April 2016

World Supersport - Starting Grid

18 Laps x 4,542 km = 81,756 km



1	21 KRUMMENACHER R. Kawasaki 1'39.300 SP2	2	81 STAPLEFORD L. Triumph 1'39.475 SP2	3	1 SOFUOGLU K. Kawasaki 1'39.580 SP2
2	2 JACOBSEN P. Honda 1'40.165 SP2	4	25 BALDOLINI A. MV Agusta 1'40.248 SP2	5	111 SMITH K. Honda 1'40.345 SP2
3	69 JEZEK O. Kawasaki 1'41.270 SP2	8	4 REA G. MV Agusta 1'41.512 SP2	9	87 ZANETTI L. MV Agusta 1'42.055 SP2
4	19 WAHR K. Honda 1'42.084 SP2	11	55 MIKHALCHIK I. Kawasaki 1'42.809 SP2	12	16 CLUZEL J. MV Agusta 1'41.122 SP1
5	88 TEROL N. MV Agusta 1'41.671 SP1	14	86 BADOVINI A. Honda 1'41.785 SP1	15	61 ZACCONE A. Kawasaki 1'41.816 SP1
6	44 ROLFO R. MV Agusta 1'41.920 SP1	17	11 GAMARINO C. Kawasaki 1'42.164 SP1	18	6 STIRPE D. Kawasaki 1'42.318 SP1
7	64 CARICASULO F. Honda 1'42.379 SP1	20	77 RYDE K. Yamaha 1'42.575 SP1	21	63 KHAIRUDDIN Z. Kawasaki 1'42.673 SP1
8	51 SCHOUTEN B. Yamaha 1'42.730 SP1	23	47 BASSANI A. Kawasaki 1'42.735 SP1	24	71 BERGMAN C. Honda 1'43.697 SP1
9	74 VAN SIKKELERUS J. Yamaha 1'44.158 SP1	26	78 OKUBO H. Honda 1'44.631 SP1	27	119 CHROBAK J. MV Agusta 1'45.258 SP1
10	35 HILL S. Honda 1'45.489 SP1	29	23 TANGRE C. Suzuki 2'04.266 FP	30	10 CALERO N. Kawasaki 2'04.674 FP
11	84 CRESSON L. Kawasaki 2'05.042 FP	32	12 GOBBI C. Yamaha 2'06.297 FP		
12					

Jury President

..... Race Director

FICR PERUGIA TIMING



Official Tyre Supplier



Official Timekeeper