

Buriram 4.554 m

1 / 2

Thai Round, 11-12-13 March 2016

World Supersport - Results Superpole 1

No.	Rider	Nat	Team	Bike	Time	Gap	Rel.	Laps	Speed	
									Avg	Max
1*	78 H. OKUBO	JPN	CIA Landlord Insurance Honda	Honda CBR600RR	1'39.504			7	164,761	264,7
2*	19 K. WAHR	GER	Gemar Balloons - Team Lorini	Honda CBR600RR	1'39.560	0.056	0.056	6	164,669	265,4
3	63 Z. KHAIRUDDIN	MAS	Orelac Racing VerdNatura	Kawasaki ZX-6R	1'39.641	0.137	0.081	4	164,535	262,8
4	24 D. KRAISART	THA	Yamaha Thailand Racing Team	Yamaha YZF R6	1'39.661	0.157	0.020	7	164,502	260,2
5	64 F. CARICASULO	ITA	Bardahl Evan Bros. Honda Racing	Honda CBR600RR	1'39.809	0.305	0.148	7	164,258	260,2
6	87 L. ZANETTI	ITA	MV Agusta Reparto Corse	MV Agusta F3 675	1'39.828	0.324	0.019	5	164,226	260,2
7	69 O. JEZEK	CZE	Team GoEleven	Kawasaki ZX-6R	1'39.930	0.426	0.102	7	164,059	261,5
8	68 G. SCOTT	AUS	Gemar Balloons - Team Lorini	Honda CBR600RR	1'39.932	0.428	0.002	7	164,056	264,1
9	77 K. RYDE	GBR	Ranieri Med - SC Racing	Yamaha YZF R6	1'40.059	0.555	0.127	7	163,847	259,6
10	11 C. GAMARINO	ITA	Team GoEleven	Kawasaki ZX-6R	1'40.672	1.168	0.613	7	162,850	261,5
11	41 A. WAGNER	AUS	GRT Racing Team	MV Agusta F3 675	1'40.725	1.221	0.053	5	162,764	252,9
12	10 N. CALERO	ESP	Orelac Racing VerdNatura	Kawasaki ZX-6R	1'41.105	1.601	0.380	7	162,152	264,1
13	44 R. ROLFO	ITA	Team Factory Vamag	MV Agusta F3 675	1'41.326	1.822	0.221	8	161,799	253,5
14	35 S. HILL	GBR	CIA Landlord Insurance Honda	Honda CBR600RR	1'41.581	2.077	0.255	8	161,392	257,1
15	83 L. EPIS	AUS	Response RE Racing	Kawasaki ZX-6R	1'42.490	2.986	0.909	8	159,961	255,9

* Qualified to Superpole 2

AIR	Humidity:	49%	Temp:	34°C
TRACK	Condition:	Dry	Temp:	44°C

12/03/2016 Start 14:30 End 14:47

The results are provisional until the end of the time limit for protests and appeals and the completion of the technical checks.

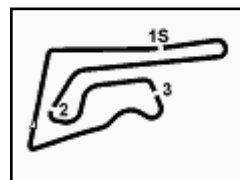
FICR PERUGIA TIMING



Official Tyre Supplier



Official Timekeeper



Thai Round, 11-12-13 March 2016
World Supersport - Results Superpole 1

Session Highlights

14.30.04 Start
 14.47.48 End Of Session

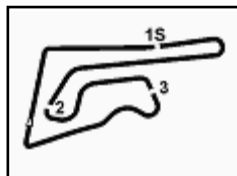
Fastest Laps Sequence

No.	Rider	Nat	Team	Bike	Local Time	Time	Gap	Avg
77	K. RYDE	GBR	Ranieri Med - SC Racing	Yamaha YZF R6	14:33'30.445	1'40.597		162,971
19	K. WAHR	GER	Gemar Balloons - Team Lorini	Honda CBR600RR	14:33'36.403	1'39.915	-0.682	164,083
24	D. KRAISART	THA	Yamaha Thailand Racing Team	Yamaha YZF R6	14:36'55.688	1'39.846	-0.069	164,197
24	D. KRAISART	THA	Yamaha Thailand Racing Team	Yamaha YZF R6	14:43'42.634	1'39.661	-0.185	164,502
19	K. WAHR	GER	Gemar Balloons - Team Lorini	Honda CBR600RR	14:44'40.439	1'39.590	-0.071	164,619
78	H. OKUBO	JPN	CIA Landlord Insurance Honda	Honda CBR600RR	14:44'50.104	1'39.504	-0.086	164,761

12/03/2016 Start 14:30 End 14:47

The results are provisional until the end of the time limit for protests and appeals and the completion of the technical checks.





Buriram 4.554 m

Thai Round, 11-12-13 March 2016

World Supersport - Best Sector & Speed Superpole 1

Best Lap

1	78 H. OKUBO	Honda CBR600RR	1'39.504
2	19 K. WAHR	Honda CBR600RR	1'39.560
3	63 Z. KHAIRUDDIN	Kawasaki ZX-6R	1'39.641
4	24 D. KRAISART	Yamaha YZF R6	1'39.661
5	64 F. CARICASULO	Honda CBR600RR	1'39.809
6	87 L. ZANETTI	MV Austa F3 675	1'39.828
7	69 O. JEZEK	Kawasaki ZX-6R	1'39.930
8	68 G. SCOTT	Honda CBR600RR	1'39.932
9	77 K. RYDE	Yamaha YZF R6	1'40.059
10	11 C. GAMARINO	Kawasaki ZX-6R	1'40.672
11	41 A. WAGNER	MV Austa F3 675	1'40.725
12	10 N. CALERO	Kawasaki ZX-6R	1'41.105
13	44 R. ROLFO	MV Austa F3 675	1'41.326
14	35 S. HILL	Honda CBR600RR	1'41.581
15	83 L. EPIS	Kawasaki ZX-6R	1'42.490

Top Speeds

1	19 K. WAHR	Honda CBR600RR	265.4
2	78 H. OKUBO	Honda CBR600RR	264.7
3	68 G. SCOTT	Honda CBR600RR	264.1
4	10 N. CALERO	Kawasaki ZX-6R	264.1
5	63 Z. KHAIRUDDIN	Kawasaki ZX-6R	262.8
6	69 O. JEZEK	Kawasaki ZX-6R	261.5
7	11 C. GAMARINO	Kawasaki ZX-6R	261.5
8	64 F. CARICASULO	Honda CBR600RR	260.2
9	87 L. ZANETTI	MV Austa F3 675	260.2
10	24 D. KRAISART	Yamaha YZF R6	260.2
11	77 K. RYDE	Yamaha YZF R6	259.6
12	35 S. HILL	Honda CBR600RR	257.1
13	83 L. EPIS	Kawasaki ZX-6R	255.9
14	44 R. ROLFO	MV Austa F3 675	253.5
15	41 A. WAGNER	MV Austa F3 675	252.9

Seg. 1

1	64 F. CARICASULO	21.365
2	78 H. OKUBO	21.383
3	19 K. WAHR	21.385
4	63 Z. KHAIRUDDIN	21.403
5	77 K. RYDE	21.478
6	87 L. ZANETTI	21.531
7	68 G. SCOTT	21.532
8	69 O. JEZEK	21.568
9	24 D. KRAISART	21.636
10	10 N. CALERO	21.674
11	11 C. GAMARINO	21.718
12	35 S. HILL	21.764
13	41 A. WAGNER	21.826
14	44 R. ROLFO	22.018
15	83 L. EPIS	22.067

Seg. 2

1	78 H. OKUBO	29.127
2	19 K. WAHR	29.249
3	77 K. RYDE	29.311
4	63 Z. KHAIRUDDIN	29.349
5	68 G. SCOTT	29.386
6	64 F. CARICASULO	29.394
7	24 D. KRAISART	29.411
8	69 O. JEZEK	29.440
9	41 A. WAGNER	29.477
10	87 L. ZANETTI	29.510
11	10 N. CALERO	29.534
12	11 C. GAMARINO	29.588
13	35 S. HILL	29.710
14	44 R. ROLFO	29.729
15	83 L. EPIS	29.833

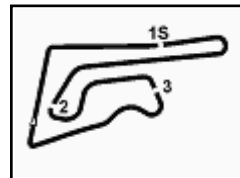
Seg. 3

1	24 D. KRAISART	22.210
2	78 H. OKUBO	22.408
3	69 O. JEZEK	22.461
4	19 K. WAHR	22.475
5	64 F. CARICASULO	22.479
6	68 G. SCOTT	22.493
7	87 L. ZANETTI	22.493
8	63 Z. KHAIRUDDIN	22.496
9	41 A. WAGNER	22.549
10	44 R. ROLFO	22.589
11	77 K. RYDE	22.675
12	11 C. GAMARINO	22.715
13	35 S. HILL	22.878
14	10 N. CALERO	23.117
15	83 L. EPIS	23.307

Seg. 4

1	19 K. WAHR	26.193
2	87 L. ZANETTI	26.294
3	24 D. KRAISART	26.329
4	69 O. JEZEK	26.350
5	63 Z. KHAIRUDDIN	26.393
6	77 K. RYDE	26.407
7	68 G. SCOTT	26.422
8	11 C. GAMARINO	26.436
9	78 H. OKUBO	26.464
10	64 F. CARICASULO	26.521
11	44 R. ROLFO	26.675
12	41 A. WAGNER	26.717
13	10 N. CALERO	26.725
14	35 S. HILL	26.876
15	83 L. EPIS	27.180





Buriram 4.554 m

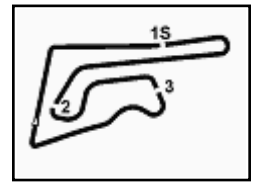
1 / 1

Thai Round, 11-12-13 March 2016

World Supersport - Ideal Times Superpole 1

No.	Rider	Nat	Bike	Seg. 1	Seg. 2	Seg. 3	Seg. 4	Ideal Time			
				Diff. 1	Diff. 2	Diff. 3	Diff. 4	Best Lap	Pos.	Diff.	
1	19 K. WAHR	GER	Honda CBR600RR	21.385 0.169	29.249	22.475 0.089	26.193	1'39.302	1'39.560	2	0.258
2	78 H. OKUBO	JPN	Honda CBR600RR	21.383	29.127	22.408	26.464 0.122	1'39.382	1'39.504	1	0.122
3	24 D. KRAISART	THA	Yamaha YZF R6	21.636	29.411 0.040	22.210	26.329 0.035	1'39.586	1'39.661	4	0.075
4	63 Z. KHAIRUDDIN	MAS	Kawasaki ZX-6R	21.403	29.349	22.496	26.393	1'39.641	1'39.641	3	0.000
5	64 F. CARICASULO	ITA	Honda CBR600RR	21.365 0.050	29.394	22.479	26.521	1'39.759	1'39.809	5	0.050
6	69 O. JEZEK	CZE	Kawasaki ZX-6R	21.568 0.111	29.440	22.461	26.350	1'39.819	1'39.930	7	0.111
7	87 L. ZANETTI	ITA	MV Agusta F3 675	21.531	29.510	22.493	26.294	1'39.828	1'39.828	6	0.000
8	68 G. SCOTT	AUS	Honda CBR600RR	21.532 0.054	29.386	22.493 0.045	26.422	1'39.833	1'39.932	8	0.099
9	77 K. RYDE	GBR	Yamaha YZF R6	21.478	29.311	22.675 0.085	26.407 0.103	1'39.871	1'40.059	9	0.188
10	11 C. GAMARINO	ITA	Kawasaki ZX-6R	21.718 0.101	29.588	22.715	26.436 0.114	1'40.457	1'40.672	10	0.215
11	41 A. WAGNER	AUS	MV Agusta F3 675	21.826 0.156	29.477	22.549	26.717	1'40.569	1'40.725	11	0.156
12	44 R. ROLFO	ITA	MV Agusta F3 675	22.018 0.113	29.729	22.589 0.075	26.675 0.127	1'41.011	1'41.326	13	0.315
13	10 N. CALERO	ESP	Kawasaki ZX-6R	21.674 0.016	29.534	23.117 0.013	26.725 0.026	1'41.050	1'41.105	12	0.055
14	35 S. HILL	GBR	Honda CBR600RR	21.764 0.105	29.710	22.878 0.053	26.876 0.195	1'41.228	1'41.581	14	0.353
15	83 L. EPIS	AUS	Kawasaki ZX-6R	22.067	29.833	23.307	27.180 0.103	1'42.387	1'42.490	15	0.103
Overall Ideal Time				21.365	29.127	22.210	26.193	1'38.895			





Buriram 4.554 m

Thai Round, 11-12-13 March 2016

World Supersport - Chronological Analysis Superpole 1

5	22.275	29.943	23.601	27.243	1'43.062	248.8	14:40'26.085
6	22.236	30.137	23.639	27.190	1'43.202	250.0	14:42'09.287
7	22.088	29.952	23.461	27.229	1'42.730	250.6	14:43'52.017
8	22.226	30.241	23.324	27.227	1'43.018	249.4	14:45'35.035

P = Pits In/Out - C = Lap-Time Cancelled

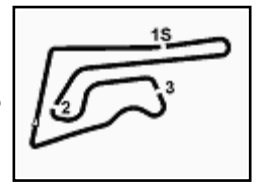
FKR PERUGIA TIMING



Official Tyre Supplier



Official Timekeeper



Buriram 4.554 m

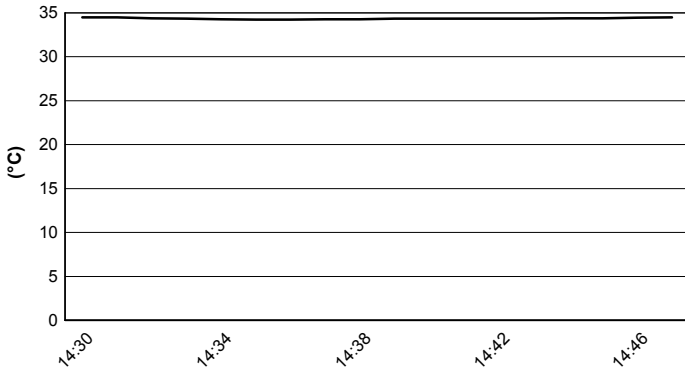
Thai Round, 11-12-13 March 2016

World Supersport - Weather Report Superpole 1

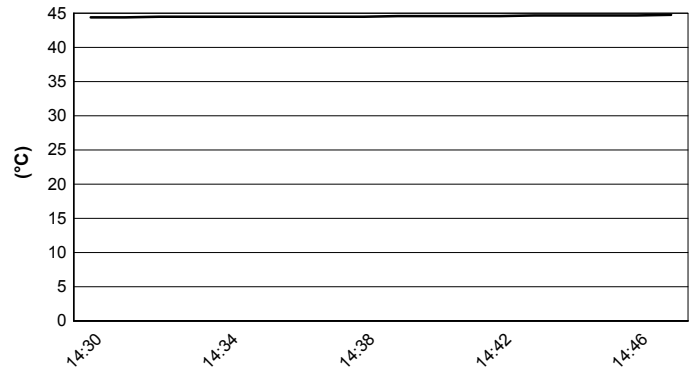
Session started 14:30

Session ended 14:47

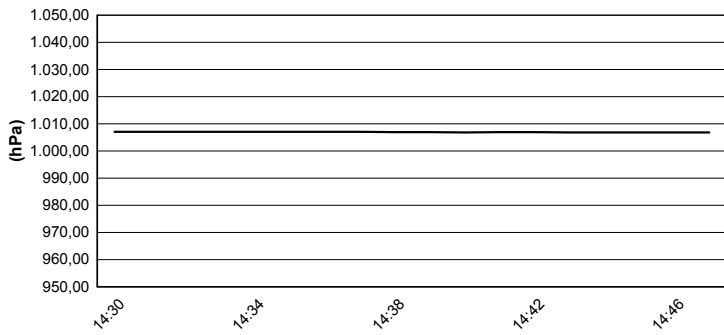
Air Temperature



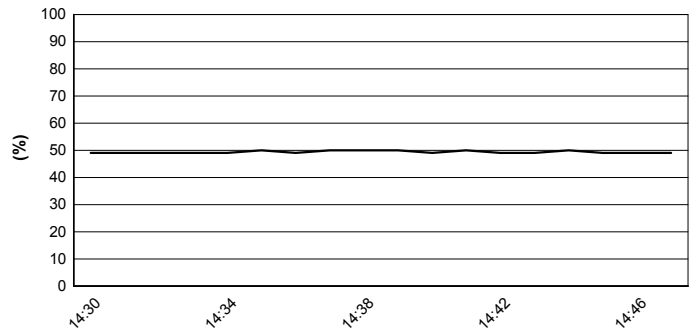
Track Temperature



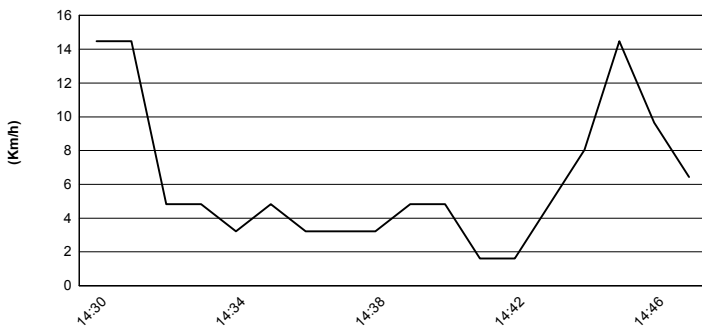
Air Pressure



Humidity



Wind Speed



Wind Direction

