

Phillip Island 4.445 m

1 / 2

Australian Round, 24-25-26 February 2017

World Supersport - Results Superpole 1

No.	Rider	Nat	Team	Bike	Time	Gap	Rel.	Laps	Speed	
									Avg	Max
1*	77 K. RYDE	GBR	Kawasaki Puccetti Racing	Kawasaki ZX-6R	1'33.887			8	170,439	271,4
2*	65 M. CANDUCCI	ITA	Puccetti Racing Junior Team FMI	Kawasaki ZX-6R	1'34.006	0.119	0.119	8	170,223	268,0
3	63 Z. KHAIRUDDIN	MAS	Orelac Racing VerdNatura	Kawasaki ZX-6R	1'34.032	0.145	0.026	6	170,176	264,7
4	10 N. CALERO	ESP	Orelac Racing VerdNatura	Kawasaki ZX-6R	1'34.441	0.554	0.409	9	169,439	267,3
5	32 S. MORAIS	RSA	Kallio Racing	Yamaha YZF R6	1'34.455	0.568	0.014	8	169,414	266,7
6	66 N. TUULI	FIN	Kallio Racing	Yamaha YZF R6	1'34.556	0.669	0.101	7	169,233	264,1
7	70 R. MULHAUSER	SUI	CIA Landlord Insurance Honda	Honda CBR600RR	1'34.591	0.704	0.035	8	169,170	265,4
8	35 S. HILL	GBR	Profile Racing	Triumph Daytona 675	1'34.615	0.728	0.024	8	169,128	272,0
9	11 C. GAMARINO	ITA	BARDAHL EVAN BROS. Honda Racing	Honda CBR600RR	1'34.660	0.773	0.045	8	169,047	260,2
10	41 A. WAGNER	AUS	GEMAR Team Lorini	Honda CBR600RR	1'34.721	0.834	0.061	8	168,938	266,0
11	83 L. EPIS	AUS	Response RE Racing	Kawasaki ZX-6R	1'34.839	0.952	0.118	8	168,728	270,0
12	13 A. WEST	AUS	West Racing	Yamaha YZF R6	1'34.899	1.012	0.060	5	168,621	257,1
13	26 K. WATANABE	JPN	Team Kawasaki Go Eleven	Kawasaki ZX-6R	1'34.968	1.081	0.069	9	168,499	263,4
14	7 D. PIZZOLI	ITA	Race Department ATK#25	MV Agusta F3 675	1'36.666	2.779	1.698	8	165,539	263,4

* Qualified to Superpole 2

AIR	Humidity:	56%	Temp:	17°C
TRACK	Condition:	Dry	Temp:	34°C

Records	Pole	2013 S.Lowes	1'32.545	172,910	Km/h
	Race	2013 K.Sofuoglu	1'33.283	171,540	Km/h
	Circuit	2013 S.Lowes	1'32.545	172,910	Km/h

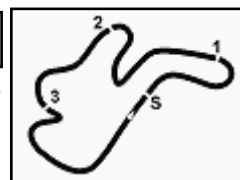
Start
25/02/2017 13:30

End
13:47

The results are provisional until the end of the time limit for protests and appeals and the completion of the technical checks.

These data/results cannot be reproduced, stored and/or transmitted in whole or in part by any manner of electronic, mechanical, photocopying, recording, broadcasting or otherwise now known or herein after developed without the previous express consent by the copyright owner, except for reproduction in daily press and regular printed publications on sale to the public within 60 days of the event related to those data/results and always provided that copyright symbol appears together as follows below.

© DORNA WSBK ORGANIZATION Srl 2017



Australian Round, 24-25-26 February 2017

World Supersport - Results Superpole 1

Session Highlights

Local Time	No. Rider	Description
13.30.00		Start
13.43.50	63 Z. KHAIRUDDIN	Crashed - Turn 2
13.47.05		End Of Session

Fastest Laps Sequence

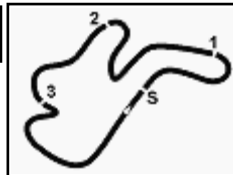
No.	Rider	Nat	Team	Bike	Local Time	Time	Gap	Avg
83	L. EPIS	AUS	Response RE Racing	Kawasaki ZX-6R	13:33'27.469	1'35.260		167,982
70	R. MULHAUSER	SUI	CIA Landlord Insurance Honda	Honda CBR600RR	13:33'27.738	1'34.711	-0.549	168,956
77	K. RYDE	GBR	Kawasaki Puccetti Racing	Kawasaki ZX-6R	13:33'28.501	1'34.165	-0.546	169,936
65	M. CANDUCCI	ITA	Puccetti Racing Junior Team FMI	Kawasaki ZX-6R	13:42'37.669	1'34.006	-0.159	170,223
77	K. RYDE	GBR	Kawasaki Puccetti Racing	Kawasaki ZX-6R	13:42'41.672	1'33.887	-0.119	170,439

25/02/2017 Start End The results are provisional until the end of the time limit for protests and appeals
 13:30 13:47 and the completion of the technical checks.

These data/results cannot be reproduced, stored and/or transmitted in whole or in part by any manner of electronic, mechanical, photocopying, recording, broadcasting or otherwise now known or herein after developed without the previous express consent by the copyright owner, except for reproduction in daily press and regular printed publications on sale to the public within 60 days of the event related to those data/results and always provided that copyright symbol appears together as follows below.

© DORNA WSBK ORGANIZATION Srl 2017





Phillip Island 4.445 m

Australian Round, 24-25-26 February 2017

World Supersport - Best Sector & Speed Superpole 1

BEST LAP

1	77 K. RYDE	Kawasaki ZX-6R	1'33.887
2	65 M. CANDUCCI	Kawasaki ZX-6R	1'34.006
3	63 Z. KHAIRUDDIN	Kawasaki ZX-6R	1'34.032
4	10 N. CALERO	Kawasaki ZX-6R	1'34.441
5	32 S. MORAIS	Yamaha YZF R6	1'34.455
6	66 N. TUULI	Yamaha YZF R6	1'34.556
7	70 R. MULHAUSER	Honda CBR600RR	1'34.591
8	35 S. HILL	Triumph Daytona 675	1'34.615
9	11 C. GAMARINO	Honda CBR600RR	1'34.660
10	41 A. WAGNER	Honda CBR600RR	1'34.721
11	83 L. EPIS	Kawasaki ZX-6R	1'34.839
12	13 A. WEST	Yamaha YZF R6	1'34.899
13	26 K. WATANABE	Kawasaki ZX-6R	1'34.968
14	7 D. PIZZOLI	MV Austa F3 675	1'36.666

SPEED

1	35 S. HILL	Triumph Daytona 675	272.0
2	77 K. RYDE	Kawasaki ZX-6R	271.4
3	83 L. EPIS	Kawasaki ZX-6R	270.0
4	65 M. CANDUCCI	Kawasaki ZX-6R	268.0
5	10 N. CALERO	Kawasaki ZX-6R	267.3
6	32 S. MORAIS	Yamaha YZF R6	266.7
7	41 A. WAGNER	Honda CBR600RR	266.0
8	70 R. MULHAUSER	Honda CBR600RR	265.4
9	63 Z. KHAIRUDDIN	Kawasaki ZX-6R	264.7
10	66 N. TUULI	Yamaha YZF R6	264.1
11	7 D. PIZZOLI	MV Austa F3 675	263.4
12	26 K. WATANABE	Kawasaki ZX-6R	263.4
13	11 C. GAMARINO	Honda CBR600RR	260.2
14	13 A. WEST	Yamaha YZF R6	257.1

SEG. 1		SEG. 2		SEG. 3		SEG. 4		SEG. 5						
1	35 S. HILL	3.623	1	65 M. CANDUCCI	18.686	1	77 K. RYDE	27.042	1	65 M. CANDUCCI	17.648	1	35 S. HILL	26.280
2	77 K. RYDE	3.633	2	63 Z. KHAIRUDDIN	18.729	2	63 Z. KHAIRUDDIN	27.048	2	77 K. RYDE	17.789	2	77 K. RYDE	26.339
3	32 S. MORAIS	3.648	3	10 N. CALERO	18.827	3	32 S. MORAIS	27.158	3	10 N. CALERO	17.795	3	32 S. MORAIS	26.445
4	83 L. EPIS	3.650	4	70 R. MULHAUSER	18.956	4	11 C. GAMARINO	27.218	4	11 C. GAMARINO	17.815	4	63 Z. KHAIRUDDIN	26.476
5	65 M. CANDUCCI	3.677	5	77 K. RYDE	18.966	5	70 R. MULHAUSER	27.298	5	41 A. WAGNER	17.868	5	70 R. MULHAUSER	26.493
6	10 N. CALERO	3.685	6	66 N. TUULI	18.978	6	10 N. CALERO	27.307	6	35 S. HILL	17.874	6	66 N. TUULI	26.531
7	66 N. TUULI	3.698	7	11 C. GAMARINO	19.003	7	66 N. TUULI	27.320	7	26 K. WATANABE	17.914	7	10 N. CALERO	26.531
8	41 A. WAGNER	3.699	8	41 A. WAGNER	19.012	8	65 M. CANDUCCI	27.322	8	66 N. TUULI	17.919	8	13 A. WEST	26.547
9	70 R. MULHAUSER	3.710	9	32 S. MORAIS	19.014	9	35 S. HILL	27.336	9	63 Z. KHAIRUDDIN	17.935	9	65 M. CANDUCCI	26.555
10	7 D. PIZZOLI	3.718	10	83 L. EPIS	19.027	10	26 K. WATANABE	27.347	10	70 R. MULHAUSER	17.950	10	11 C. GAMARINO	26.579
11	63 Z. KHAIRUDDIN	3.719	11	26 K. WATANABE	19.047	11	83 L. EPIS	27.364	11	13 A. WEST	18.001	11	41 A. WAGNER	26.589
12	26 K. WATANABE	3.743	12	35 S. HILL	19.061	12	13 A. WEST	27.432	12	32 S. MORAIS	18.008	12	83 L. EPIS	26.609
13	11 C. GAMARINO	3.756	13	13 A. WEST	19.075	13	41 A. WAGNER	27.455	13	83 L. EPIS	18.018	13	7 D. PIZZOLI	26.753
14	13 A. WEST	3.817	14	7 D. PIZZOLI	19.684	14	7 D. PIZZOLI	28.085	14	7 D. PIZZOLI	18.393	14	26 K. WATANABE	26.778

25/02/2017

These data/results cannot be reproduced, stored and/or transmitted in whole or in part by any manner of electronic, mechanical, photocopying, recording, broadcasting or otherwise now known or herein after developed without the previous express consent by the copyright owner, except for reproduction in daily press and regular printed publications on sale to the public within 60 days of the event related to those data/results and always provided that copyright symbol appears together as follows below.

© DORNA WSBK ORGANIZATION Srl 2017

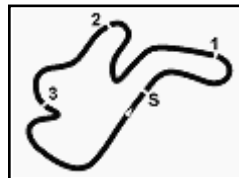
FICR PERUGIA TIMING



Official Tyre Supplier



Official Timekeeper



Phillip Island 4.445 m

Australian Round, 24-25-26 February 2017

World Supersport - Ideal Times Superpole 1

No.	Rider	Nat	Bike	Seg. 1	Seg. 2	Seg. 3	Seg. 4	Seg. 5	Ideal Time		
				Diff. 1	Diff. 2	Diff. 3	Diff. 4	Diff. 5	Best Lap	Pos.	Diff.
1	77 K. RYDE	GBR	Kawasaki ZX-6R	3.633 0.055	18.966 0.046	27.042	17.789 0.017	26.339	1'33.769 1'33.887	1	0.118
2	65 M. CANDUCCI	ITA	Kawasaki ZX-6R	3.677 0.049	18.686	27.322	17.648 0.044	26.555 0.025	1'33.888 1'34.006	2	0.118
3	63 Z. KHAIRUDDIN	MAS	Kawasaki ZX-6R	3.719 0.020	18.729	27.048	17.935 0.105	26.476	1'33.907 1'34.032	3	0.125
4	10 N. CALERO	ESP	Kawasaki ZX-6R	3.685 0.031	18.827	27.307	17.795	26.531 0.265	1'34.145 1'34.441	4	0.296
5	35 S. HILL	GBR	Triumph Daytona 675	3.623 0.072	19.061 0.299	27.336 0.070	17.874	26.280	1'34.174 1'34.615	8	0.441
6	32 S. MORAIS	RSA	Yamaha YZF R6	3.648 0.096	19.014 0.031	27.158 0.051	18.008 0.004	26.445	1'34.273 1'34.455	5	0.182
7	11 C. GAMARINO	ITA	Honda CBR600RR	3.756 0.019	19.003 0.115	27.218 0.081	17.815 0.074	26.579	1'34.371 1'34.660	9	0.289
8	70 R. MULHAUSER	SUI	Honda CBR600RR	3.710 0.021	18.956	27.298	17.950 0.062	26.493 0.101	1'34.407 1'34.591	7	0.184
9	66 N. TUULI	FIN	Yamaha YZF R6	3.698 0.030	18.978 0.035	27.320	17.919 0.045	26.531	1'34.446 1'34.556	6	0.110
10	41 A. WAGNER	AUS	Honda CBR600RR	3.699 0.013	19.012 0.061	27.455	17.868 0.024	26.589	1'34.623 1'34.721	10	0.098
11	83 L. EPIS	AUS	Kawasaki ZX-6R	3.650 0.051	19.027	27.364 0.109	18.018 0.011	26.609	1'34.668 1'34.839	11	0.171
12	26 K. WATANABE	JPN	Kawasaki ZX-6R	3.743 0.061	19.047 0.028	27.347	17.914 0.002	26.778 0.048	1'34.829 1'34.968	13	0.139
13	13 A. WEST	AUS	Yamaha YZF R6	3.817 0.027	19.075	27.432	18.001	26.547	1'34.872 1'34.899	12	0.027
14	7 D. PIZZOLI	ITA	MV Agusta F3 675	3.718	19.684	28.085 0.033	18.393	26.753	1'36.633 1'36.666	14	0.033
Overall Ideal Time				3.623	18.686	27.042	17.648	26.280	1'33.279		

25/02/2017

These data/results cannot be reproduced, stored and/or transmitted in whole or in part by any manner of electronic, mechanical, photocopying, recording, broadcasting or otherwise now known or herein after developed without the previous express consent by the copyright owner, except for reproduction in daily press and regular printed publications on sale to the public within 60 days of the event related to those data/results and always provided that copyright symbol appears together as follows below.

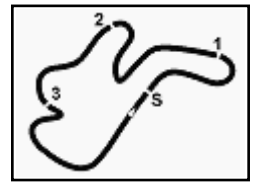
© DORNA WSBK ORGANIZATION Srl 2017

FKR PERUGIA TIMING


Official Tyre Supplier



Official Timekeeper



Australian Round, 24-25-26 February 2017

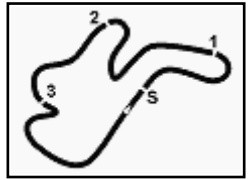
World Supersport - Chronological Analysis Superpole 1

14° 7 D. PIZZOLI (1'36.666)								
Lap	Seg. 1	Seg. 2	Seg. 3	Seg. 4	Seg. 5	Lap Time	km/h	Local Time
1	7.729	27.008	33.450	27.500	29.166	2'04.853 P		13:30'20.244
2	3.753	20.132	28.339	18.722	26.998	1'37.944	262.1	13:32'25.097
3	3.776	19.937	28.085	18.621	26.924	1'37.343	259.0	13:35'40.384
4	3.777	19.834	38.222	19.495	27.502	1'48.830	259.6	13:37'29.214
5	3.813	19.956	28.178	18.616	27.133	1'37.696	257.1	13:39'06.910
6	3.808	20.150	28.856	19.166	2'33.356	3'45.336 P	257.8	13:42'52.246
7	5.394	25.610	36.720	18.957	34.072	2'00.753 P		13:44'52.999
8	3.718	19.684	28.118	18.393	26.753	1'36.666	263.4	13:46'29.665

25/02/2017 P = Pits In/Out - C = Lap-Time Cancelled

These data/results cannot be reproduced, stored and/or transmitted in whole or in part by any manner of electronic, mechanical, photocopying, recording, broadcasting or otherwise now known or herein after developed without the previous express consent by the copyright owner, except for reproduction in daily press and regular printed publications on sale to the public within 60 days of the event related to those data/results and always provided that copyright symbol appears together as follows below.

© DORNA WSBK ORGANIZATION Srl 2017

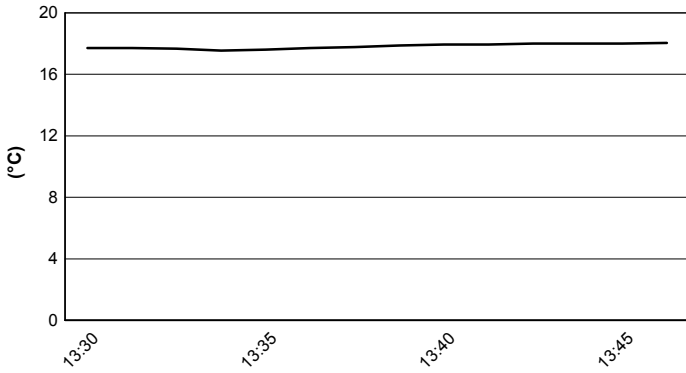


Phillip Island 4.445 m

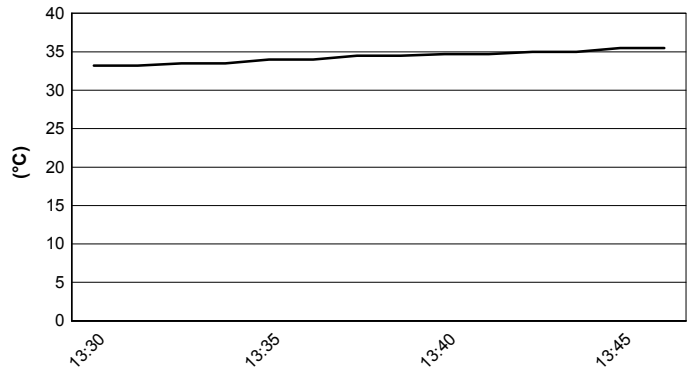
Australian Round, 24-25-26 February 2017
World Supersport - Weather Report Superpole 1

Session started 13:30 Session ended 13:47

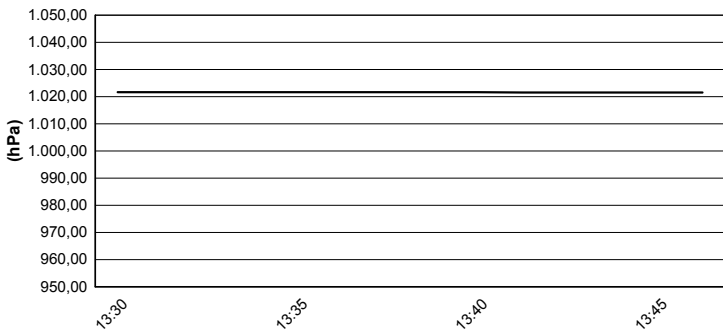
Air Temperature



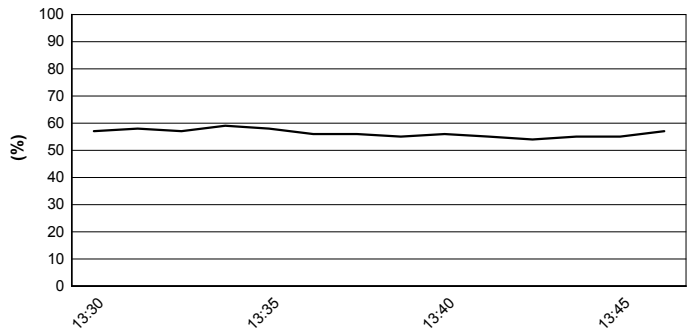
Track Temperature



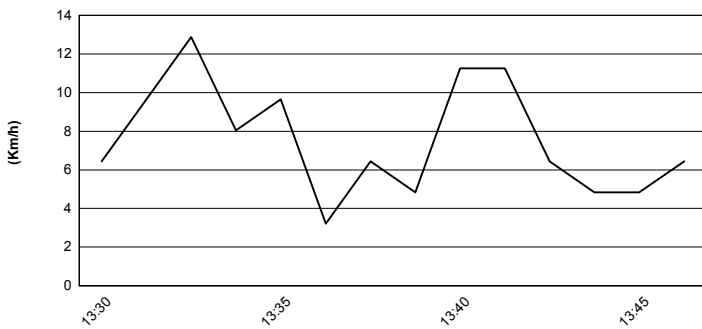
Air Pressure



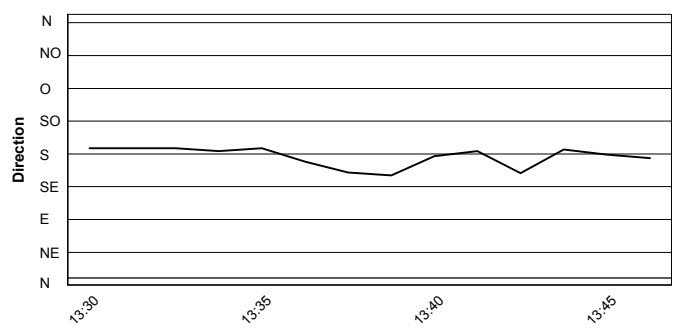
Humidity



Wind Speed



Wind Direction



25/02/2017

These data/results cannot be reproduced, stored and/or transmitted in whole or in part by any manner of electronic, mechanical, photocopying, recording, broadcasting or otherwise now known or herein after developed without the previous express consent by the copyright owner, except for reproduction in daily press and regular printed publications on sale to the public within 60 days of the event related to those data/results and always provided that copyright symbol appears together as follows below.

© DORNA WSBK ORGANIZATION Srl 2017

