

Spanish Round, 31 March 1-2 April 2017

World Supersport - Results Superpole 1

MotorLand Aragon 5.077 m

1 / 2

No.	Rider	Nat	Team	Bike	Class	Time	Gap	Rel.	Laps	Speed	
										Avg	Max
1*	144 L. MAHIAS	FRA	GRT Yamaha Official WorldSSP Team	Yamaha YZF R6		1'55.217			6	158,633	267,3
2*	44 R. ROLFO	ITA	Team Factory Vamag	MV Agusta F3 675		1'55.335	0.118	0.118	7	158,471	270,0
3	64 F. CARICASULO	ITA	GRT Yamaha Official WorldSSP Team	Yamaha YZF R6		1'55.576	0.359	0.241	8	158,140	270,7
4	16 J. CLUZEL	FRA	CIA Landlord Insurance Honda	Honda CBR600RR		1'55.737	0.520	0.161	6	157,920	270,7
5	65 M. CANDUCCI	ITA	Puccetti Racing Junior Team FMI	Kawasaki ZX-6R		1'55.909	0.692	0.172	7	157,686	268,0
6	81 L. STAPLEFORD	GBR	Profile Racing	Triumph Daytona 675		1'56.044	0.827	0.135	8	157,502	270,0
7	63 Z. KHAIRUDDIN	MAS	Orelac Racing VerdNatura	Kawasaki ZX-6R		1'56.310	1.093	0.266	7	157,142	268,0
8	77 K. RYDE	GBR	Kawasaki Puccetti Racing	Kawasaki ZX-6R		1'56.614	1.397	0.304	8	156,732	267,3
9	26 K. WATANABE	JPN	Team Kawasaki Go Eleven	Kawasaki ZX-6R		1'56.724	1.507	0.110	8	156,585	264,1
10	84 L. CRESSON	BEL	SC Racing-RPM84	Yamaha YZF R6		1'56.976	1.759	0.252	7	156,247	274,8
11	38 H. SOOMER	EST	WILSport Racedays	Honda CBR600RR	ESS	1'57.333	2.116	0.357	7	155,772	265,4
12	41 A. WAGNER	AUS	GEMAR Team Lorini	Honda CBR600RR		1'57.360	2.143	0.027	8	155,736	266,7
13	47 R. HARTOG	NED	Team Hartog - Jenik - Against Cancer	Kawasaki ZX-6R	ESS	1'57.518	2.301	0.158	8	155,527	268,7
14	35 S. HILL	GBR	Profile Racing	Triumph Daytona 675		1'57.741	2.524	0.223	8	155,232	264,7
15	10 N. CALERO	ESP	Orelac Racing VerdNatura	Kawasaki ZX-6R		1'57.787	2.570	0.046	8	155,172	266,7
16	69 X. CARDELUS GARCIA	ESP	Race Department ATK#25	MV Agusta F3 675		1'57.970	2.753	0.183	7	154,931	266,0
17	83 L. EPIS	AUS	Response RE Racing	Kawasaki ZX-6R		1'58.597	3.380	0.627	7	154,112	264,7
18	74 J. VAN SIKKELERUS	NED	MVR Racing	Yamaha YZF R6	ESS	1'58.600	3.383	0.003	8	154,108	260,2
19	56 P. SEBESTYÉN	HUN	SSP Hungary by Pedercini Racing	Kawasaki ZX-6R	ESS	1'58.638	3.421	0.038	7	154,059	268,0
20	92 H. KUNIKAWA	JPN	CIA Landlord Insurance Honda	Honda CBR600RR	ESS	1'59.015	3.798	0.377	8	153,571	264,1
21	73 J. CRETARO	ITA	RSV Phoenix Suzuki	Suzuki GSX-R600	ESS	1'59.382	4.165	0.367	8	153,098	260,2
22	9 C. LONDON	NZL	RSV Phoenix Suzuki	Suzuki GSX-R600	ESS	1'59.479	4.262	0.097	8	152,974	260,2
23	177 N. AL MALKI	QAT	DS Junior Team	Kawasaki ZX-6R		1'59.917	4.700	0.438	5	152,415	265,4
24	7 D. PIZZOLI	ITA	Race Department ATK#25	MV Agusta F3 675		2'04.532	9.315	4.615	5	146,767	262,1
25	13 A. WEST	AUS	EAB West Racing	Yamaha YZF R6					0		

* Qualified to Superpole 2

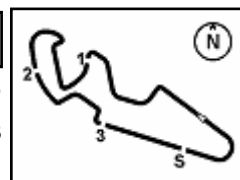
AIR	Humidity:	46%	Temp:	16°C
TRACK	Condition:	Dry	Temp:	30°C

Records	Pole	2015 J.Cluzel	1'53.138	161,550	Km/h
	Race	2015 P.Jacobsen	1'54.605	159,480	Km/h
	Circuit	2015 J.Cluzel	1'53.138	161,550	Km/h

Start 01/04/2017 14:00 End 14:33 The results are provisional until the end of the time limit for protests and appeals and the completion of the technical checks.

These data/results cannot be reproduced, stored and/or transmitted in whole or in part by any manner of electronic, mechanical, photocopying, recording, broadcasting or otherwise now known or herein after developed without the previous express consent by the copyright owner, except for reproduction in daily press and regular printed publications on sale to the public within 60 days of the event related to those data/results and always provided that copyright symbol appears together as follows below.

© DORNA WSBK ORGANIZATION Srl 2017



Spanish Round, 31 March 1-2 April 2017

World Supersport - Results Superpole 1

Session Highlights

Local Time	No. Rider	Description
14.00.00		Start
14.04.13		RED FLAG
14.05.02	13 A. WEST	Crashed - Turn 13
14.20.00		Session Restart
14.23.11	38 H. SOOMER	Crashed - Turn 9
14.24.21	38 H. SOOMER	Re-joined
14.30.15	177 N. AL MALKI	Technical Problem - Turn 12
14.31.47		WorldSSP SP2 Pit Lane Will Open at 14:41
14.33.09		End Of Session

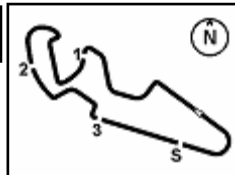
Fastest Laps Sequence

No.	Rider	Nat	Team	Bike	Local Time	Time	Gap	Avg
16	J. CLUZEL	FRA	CIA Landlord Insurance Honda	Honda CBR600RR	14:23'52.713	1'55.737		157,920
64	F. CARICASULO	ITA	GRT Yamaha Official WorldSSP Team	Yamaha YZF R6	14:23'52.762	1'55.576	-0.161	158,140
144	L. MAHIAS	FRA	GRT Yamaha Official WorldSSP Team	Yamaha YZF R6	14:25'24.978	1'55.217	-0.359	158,633

01/04/2017 Start End The results are provisional until the end of the time limit for protests and appeals
14:00 14:33 and the completion of the technical checks.

These data/results cannot be reproduced, stored and/or transmitted in whole or in part by any manner of electronic, mechanical, photocopying, recording, broadcasting or otherwise now known or herein after developed without the previous express consent by the copyright owner, except for reproduction in daily press and regular printed publications on sale to the public within 60 days of the event related to those data/results and always provided that copyright symbol appears together as follows below.

© DORNA WSBK ORGANIZATION Srl 2017



MotorLand Aragon 5.077 m

Spanish Round, 31 March 1-2 April 2017

World Supersport - Best Sector & Speed Superpole 1

BEST LAP

1	144 L. MAHIAS	Yamaha YZF R6	1'55.217
2	44 R. ROLFO	MV Austa F3 675	1'55.335
3	64 F. CARICASULO	Yamaha YZF R6	1'55.576
4	16 J. CLUZEL	Honda CBR600RR	1'55.737
5	65 M. CANDUCCI	Kawasaki ZX-6R	1'55.909
6	81 L. STAPLEFORD	Triumph Daytona 675	1'56.044
7	63 Z. KHAIRUDDIN	Kawasaki ZX-6R	1'56.310
8	77 K. RYDE	Kawasaki ZX-6R	1'56.614
9	26 K. WATANABE	Kawasaki ZX-6R	1'56.724
10	84 L. CRESSON	Yamaha YZF R6	1'56.976
11	38 H. SOOMER	Honda CBR600RR	1'57.333
12	41 A. WAGNER	Honda CBR600RR	1'57.360
13	47 R. HARTOG	Kawasaki ZX-6R	1'57.518
14	35 S. HILL	Triumph Daytona 675	1'57.741
15	10 N. CALERO	Kawasaki ZX-6R	1'57.787
16	69 X. CARDELUS GARCIA	MV Austa F3 675	1'57.970
17	83 L. EPIS	Kawasaki ZX-6R	1'58.597
18	74 J. VAN SIKKELERUS	Yamaha YZF R6	1'58.600
19	56 P. SEBESTYÉN	Kawasaki ZX-6R	1'58.638
20	92 H. KUNIKAWA	Honda CBR600RR	1'59.015
21	73 J. CRETARO	Suzuki GSX-R600	1'59.382
22	9 C. LONDON	Suzuki GSX-R600	1'59.479
23	177 N. AL MALKI	Kawasaki ZX-6R	1'59.917
24	7 D. PIZZOLI	MV Austa F3 675	2'04.532
25	13 A. WEST	Yamaha YZF R6	

SPEED

1	84 L. CRESSON	Yamaha YZF R6	274.8
2	64 F. CARICASULO	Yamaha YZF R6	270.7
3	16 J. CLUZEL	Honda CBR600RR	270.7
4	81 L. STAPLEFORD	Triumph Daytona 675	270.0
5	44 R. ROLFO	MV Austa F3 675	270.0
6	47 R. HARTOG	Kawasaki ZX-6R	268.7
7	65 M. CANDUCCI	Kawasaki ZX-6R	268.0
8	56 P. SEBESTYÉN	Kawasaki ZX-6R	268.0
9	63 Z. KHAIRUDDIN	Kawasaki ZX-6R	268.0
10	77 K. RYDE	Kawasaki ZX-6R	267.3
11	144 L. MAHIAS	Yamaha YZF R6	267.3
12	41 A. WAGNER	Honda CBR600RR	266.7
13	10 N. CALERO	Kawasaki ZX-6R	266.7
14	69 X. CARDELUS GARCIA	MV Austa F3 675	266.0
15	38 H. SOOMER	Honda CBR600RR	265.4
16	177 N. AL MALKI	Kawasaki ZX-6R	265.4
17	35 S. HILL	Triumph Daytona 675	264.7
18	83 L. EPIS	Kawasaki ZX-6R	264.7
19	26 K. WATANABE	Kawasaki ZX-6R	264.1
20	92 H. KUNIKAWA	Honda CBR600RR	264.1
21	7 D. PIZZOLI	MV Austa F3 675	262.1
22	9 C. LONDON	Suzuki GSX-R600	260.2
23	74 J. VAN SIKKELERUS	Yamaha YZF R6	260.2
24	73 J. CRETARO	Suzuki GSX-R600	260.2

SEG. 1

SEG. 2

SEG. 3

SEG. 4

SEG. 5

1	44 R. ROLFO	32.674	1	144 L. MAHIAS	32.140	1	144 L. MAHIAS	21.804	1	84 L. CRESSON	11.864	1	44 R. ROLFO	16.159
2	144 L. MAHIAS	32.685	2	64 F. CARICASULO	32.185	2	65 M. CANDUCCI	21.956	2	64 F. CARICASULO	11.883	2	64 F. CARICASULO	16.250
3	16 J. CLUZEL	32.805	3	44 R. ROLFO	32.298	3	64 F. CARICASULO	21.963	3	16 J. CLUZEL	11.938	3	144 L. MAHIAS	16.273
4	64 F. CARICASULO	32.856	4	16 J. CLUZEL	32.309	4	63 Z. KHAIRUDDIN	21.966	4	81 L. STAPLEFORD	12.028	4	83 L. EPIS	16.349
5	38 H. SOOMER	32.890	5	81 L. STAPLEFORD	32.407	5	44 R. ROLFO	21.974	5	56 P. SEBESTYÉN	12.054	5	63 Z. KHAIRUDDIN	16.378
6	65 M. CANDUCCI	32.927	6	65 M. CANDUCCI	32.416	6	26 K. WATANABE	22.044	6	47 R. HARTOG	12.067	6	35 S. HILL	16.388
7	26 K. WATANABE	32.969	7	63 Z. KHAIRUDDIN	32.488	7	16 J. CLUZEL	22.051	7	77 K. RYDE	12.082	7	65 M. CANDUCCI	16.399
8	81 L. STAPLEFORD	33.063	8	77 K. RYDE	32.608	8	81 L. STAPLEFORD	22.062	8	144 L. MAHIAS	12.086	8	16 J. CLUZEL	16.432
9	63 Z. KHAIRUDDIN	33.077	9	26 K. WATANABE	32.625	9	38 H. SOOMER	22.138	9	41 A. WAGNER	12.092	9	77 K. RYDE	16.434
10	77 K. RYDE	33.130	10	84 L. CRESSON	32.698	10	77 K. RYDE	22.157	10	44 R. ROLFO	12.092	10	26 K. WATANABE	16.442
11	84 L. CRESSON	33.289	11	35 S. HILL	32.779	11	10 N. CALERO	22.171	11	35 S. HILL	12.094	11	38 H. SOOMER	16.454
12	41 A. WAGNER	33.387	12	47 R. HARTOG	32.800	12	41 A. WAGNER	22.319	12	63 Z. KHAIRUDDIN	12.103	12	81 L. STAPLEFORD	16.484
13	10 N. CALERO	33.416	13	38 H. SOOMER	32.832	13	74 J. VAN SIKKELER	22.455	13	177 N. AL MALKI	12.106	13	47 R. HARTOG	16.488
14	13 A. WEST	33.439	14	41 A. WAGNER	32.837	14	69 X. CARDELUS G	22.478	14	26 K. WATANABE	12.115	14	69 X. CARDELUS G	16.492
15	69 X. CARDELUS G	33.497	15	69 X. CARDELUS G	32.908	15	47 R. HARTOG	22.525	15	65 M. CANDUCCI	12.135	15	9 C. LONDON	16.504
16	47 R. HARTOG	33.514	16	10 N. CALERO	33.036	16	84 L. CRESSON	22.549	16	69 X. CARDELUS G	12.147	16	84 L. CRESSON	16.504
17	56 P. SEBESTYÉN	33.521	17	13 A. WEST	33.038	17	92 H. KUNIKAWA	22.569	17	38 H. SOOMER	12.158	17	10 N. CALERO	16.507
18	35 S. HILL	33.522	18	56 P. SEBESTYÉN	33.145	18	35 S. HILL	22.601	18	83 L. EPIS	12.159	18	56 P. SEBESTYÉN	16.623
19	83 L. EPIS	33.572	19	83 L. EPIS	33.169	19	73 J. CRETARO	22.625	19	10 N. CALERO	12.215	19	41 A. WAGNER	16.647
20	74 J. VAN SIKKELER	33.603	20	73 J. CRETARO	33.294	20	9 C. LONDON	22.655	20	92 H. KUNIKAWA	12.262	20	73 J. CRETARO	16.734
21	92 H. KUNIKAWA	33.706	21	74 J. VAN SIKKELER	33.304	21	56 P. SEBESTYÉN	22.714	21	13 A. WEST	12.266	21	13 A. WEST	16.747
22	73 J. CRETARO	33.774	22	92 H. KUNIKAWA	33.349	22	83 L. EPIS	22.937	22	74 J. VAN SIKKELER	12.322	22	74 J. VAN SIKKELER	16.787
23	9 C. LONDON	33.948	23	177 N. AL MALKI	33.560	23	177 N. AL MALKI	22.990	23	7 D. PIZZOLI	12.367	23	177 N. AL MALKI	16.878
24	177 N. AL MALKI	34.288	24	9 C. LONDON	33.702	24	13 A. WEST	23.478	24	73 J. CRETARO	12.380	24	92 H. KUNIKAWA	16.905
25	7 D. PIZZOLI	35.342	25	7 D. PIZZOLI	34.566	25	7 D. PIZZOLI	23.706	25	9 C. LONDON	12.529	25	7 D. PIZZOLI	17.260

01/04/2017

These data/results cannot be reproduced, stored and/or transmitted in whole or in part by any manner of electronic, mechanical, photocopying, recording, broadcasting or otherwise now known or herein after developed without the previous express consent by the copyright owner, except for reproduction in daily press and regular printed publications on sale to the public within 60 days of the event related to those data/results and always provided that copyright symbol appears together as follows below.

© DORNA WSBK ORGANIZATION Srl 2017

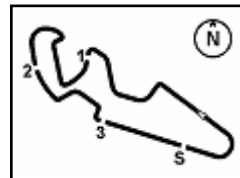
FICR PERUGIA TIMING



Official Tyre Supplier



Official Timekeeper



MotorLand Aragon 5.077 m

Spanish Round, 31 March 1-2 April 2017

World Supersport - Ideal Times Superpole 1

No.	Rider	Nat	Bike	Seg. 1	Seg. 2	Seg. 3	Seg. 4	Seg. 5	Ideal Time		
				Diff. 1	Diff. 2	Diff. 3	Diff. 4	Diff. 5	Best Lap	Pos.	Diff.
1	144 L. MAHIAS	FRA	Yamaha YZF R6	32.685	32.140	21.804 0.169	12.086 0.059	16.273 0.001	1'54.988 1'55.217	2	0.229
2	64 F. CARICASULO	ITA	Yamaha YZF R6	32.856 0.255	32.185	21.963 0.161	11.883	16.250 0.023	1'55.137 1'55.576	4	0.439
3	44 R. ROLFO	ITA	MV Agusta F3 675	32.674	32.298 0.091	21.974 0.047	12.092	16.159	1'55.197 1'55.335	3	0.138
4	16 J. CLUZEL	FRA	Honda CBR600RR	32.805 0.172	32.309	22.051 0.030	11.938	16.432	1'55.535 1'55.737	5	0.202
5	65 M. CANDUCCI	ITA	Kawasaki ZX-6R	32.927	32.416 0.052	21.956	12.135 0.002	16.399 0.022	1'55.833 1'55.909	6	0.076
6	63 Z. KHAIRUDDIN	MAS	Kawasaki ZX-6R	33.077 0.112	32.488	21.966 0.131	12.103 0.055	16.378	1'56.012 1'56.310	8	0.298
7	81 L. STAPLEFORD	GBR	Triumph Daytona 675	33.063	32.407	22.062	12.028	16.484	1'56.044 1'56.044	7	
8	26 K. WATANABE	JPN	Kawasaki ZX-6R	32.969 0.210	32.625 0.187	22.044	12.115 0.116	16.442 0.016	1'56.195 1'56.724	10	0.529
9	77 K. RYDE	GBR	Kawasaki ZX-6R	33.130	32.608 0.096	22.157	12.082 0.107	16.434	1'56.411 1'56.614	9	0.203
10	38 H. SOOMER	EST	Honda CBR600RR	32.890 0.579	32.832 0.009	22.138	12.158 0.123	16.454 0.150	1'56.472 1'57.333	12	0.861
11	84 L. CRESSON	BEL	Yamaha YZF R6	33.289	32.698	22.549	11.864 0.072	16.504	1'56.904 1'56.976	11	0.072
12	41 A. WAGNER	AUS	Honda CBR600RR	33.387	32.837	22.319	12.092 0.078	16.647	1'57.282 1'57.360	13	0.078
13	10 N. CALERO	ESP	Kawasaki ZX-6R	33.416	33.036 0.251	22.171	12.215 0.135	16.507 0.056	1'57.345 1'57.787	16	0.442
14	35 S. HILL	GBR	Triumph Daytona 675	33.522 0.065	32.779 0.239	22.601 0.009	12.094	16.388 0.044	1'57.384 1'57.741	15	0.357
15	47 R. HARTOG	NED	Kawasaki ZX-6R	33.514 0.013	32.800	22.525	12.067 0.111	16.488	1'57.394 1'57.518	14	0.124
16	69 X. CARDELUS GARCIA	ESP	MV Agusta F3 675	33.497	32.908 0.299	22.478 0.149	12.147	16.492	1'57.522 1'57.970	17	0.448
17	56 P. SEBESTYÉN	HUN	Kawasaki ZX-6R	33.521 0.409	33.145	22.714 0.172	12.054	16.623	1'58.057 1'58.638	20	0.581
18	83 L. EPIS	AUS	Kawasaki ZX-6R	33.572 0.228	33.169	22.937 0.131	12.159 0.052	16.349	1'58.186 1'58.597	18	0.411
19	74 J. VAN SIKKELERUS	NED	Yamaha YZF R6	33.603	33.304	22.455	12.322 0.129	16.787	1'58.471 1'58.600	19	0.129
20	92 H. KUNIKAWA	JPN	Honda CBR600RR	33.706	33.349 0.037	22.569	12.262 0.113	16.905 0.074	1'58.791 1'59.015	21	0.224
21	73 J. CRETARO	ITA	Suzuki GSX-R600	33.774	33.294 0.164	22.625 0.084	12.380 0.032	16.734 0.295	1'58.807 1'59.382	22	0.575
22	9 C. LONDON	NZL	Suzuki GSX-R600	33.948	33.702	22.655	12.529 0.141	16.504	1'59.338 1'59.479	23	0.141
23	177 N. AL MALKI	QAT	Kawasaki ZX-6R	34.288 0.095	33.560	22.990	12.106	16.878	1'59.822 1'59.917	24	0.095
24	7 D. PIZZOLI	ITA	MV Agusta F3 675	35.342 0.462	34.566 0.435	23.706 0.162	12.367 0.100	17.260 0.132	2'03.241 2'04.532	25	1.291
Overall Ideal Time				32.674	32.140	21.804	11.864	16.159	1'54.641		

01/04/2017

These data/results cannot be reproduced, stored and/or transmitted in whole or in part by any manner of electronic, mechanical, photocopying, recording, broadcasting or otherwise now known or herein after developed without the previous express consent by the copyright owner, except for reproduction in daily press and regular printed publications on sale to the public within 60 days of the event related to those data/results and always provided that copyright symbol appears together as follows below.

© DORNA WSBK ORGANIZATION Srl 2017

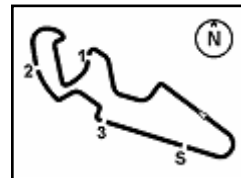
FICR PERUGIA TIMING



Official Tyre Supplier



Official Timekeeper



Spanish Round, 31 March 1-2 April 2017

World Supersport - Chronological Analysis Superpole 1

1° 144 L. MAHIAS (1'55.217)									
Lap	Seg. 1	Seg. 2	Seg. 3	Seg. 4	Seg. 5	Lap Time	km/h	Local Time	
1	33.395	33.924	22.432	12.276	16.601	2'11.645 C	264.1	14:03'19.861	
2	16'31.535	32.494	23.053	18.170	24.533	17'58.255 P	186.9	14:05'31.506	
3	32.685	32.140	21.973	12.145	16.274	1'55.217	264.7	14:25'24.978	
4	32.845	32.285	21.804	12.086	16.273	1'55.293	267.3	14:27'20.271	
5	32.805	32.232	21.922	12.099	16.442	1'55.500	264.7	14:29'15.771	
6	32.849	32.612	22.006	12.114	16.414	1'55.995	267.3	14:31'11.766	

2° 44 R. ROLFO (1'55.335)									
Lap	Seg. 1	Seg. 2	Seg. 3	Seg. 4	Seg. 5	Lap Time	km/h	Local Time	
1	32.976	38.743	23.757	12.337	16.297	2'01.925 C	262.1	14:02'35.552	
2	16'14.693	33.197	22.742	19.174	16.576	17'46.382 P	227.4	14:04'37.477	
3	32.834	32.346	21.974	12.151	16.462	1'55.767	263.4	14:24'19.626	
4	33.219	32.401	22.117	12.274	16.207	1'56.218	264.1	14:26'15.844	
5	32.674	32.389	22.021	12.092	16.159	1'55.335	270.0	14:27'11.179	
6	33.333	32.580	22.112	12.295	16.369	1'56.689	264.7	14:30'07.868	
7	33.370	32.688	22.371	12.278	16.255	1'56.962	264.1	14:32'04.830	

3° 64 F. CARICASULO (1'55.576)									
Lap	Seg. 1	Seg. 2	Seg. 3	Seg. 4	Seg. 5	Lap Time	km/h	Local Time	
1	33.679	36.205	24.325	14.901	17.128	2'00.454 C	267.3	14:02'12.511	
2	39.002	36.321	26.510	13.983	25.507	2'21.323 C	247.7	14:04'12.965	
3	13'58.528	32.789	22.842	11.885	16.854	15'22.898 P	270.7	14:06'34.288	
4	33.111	32.185	22.124	11.883	16.273	1'55.576	270.7	14:23'52.762	
5	32.856	32.517	22.147	11.994	16.331	1'55.845	267.3	14:25'48.607	
6	33.002	32.422	21.963	11.948	16.250	1'55.585	269.3	14:27'44.192	
7	33.379	47.623	23.257	12.049	16.389	2'12.697	263.4	14:29'56.889	
8	33.289	32.380	22.216	11.984	16.289	1'56.158	268.7	14:31'53.047	

4° 16 J. CLUZEL (1'55.737)									
Lap	Seg. 1	Seg. 2	Seg. 3	Seg. 4	Seg. 5	Lap Time	km/h	Local Time	
1	33.399	34.634	23.049	11.979	16.563	2'09.836 C	259.6	14:02'38.553	
2	15'43.003	33.166	22.329	12.911	17.178	17'08.587 P	233.8	14:04'48.389	
3	32.977	32.309	22.081	11.938	16.432	1'55.737	269.3	14:23'52.713	
4	33.388	32.730	22.293	11.984	21.859	2'02.254 P	268.7	14:25'54.967	
5	1'49.212	33.554	22.309	11.967	16.501	3'13.543 P	268.0	14:29'08.510	
6	32.805	32.399	22.051	12.054	16.580	1'55.889	270.7	14:31'04.399	

5° 65 M. CANDUCCI (1'55.909)									
Lap	Seg. 1	Seg. 2	Seg. 3	Seg. 4	Seg. 5	Lap Time	km/h	Local Time	
1	33.892	33.703	23.067	12.376	17.825	2'00.556 C	259.0	14:02'18.805	
2	36.541	34.634	24.798	12.891	24.102	2'12.966 C	255.3	14:04'19.361	
3	15'29.621	37.532	22.879	12.268	16.552	16'58.852 P	264.1	14:06'32.327	
4	33.066	32.416	21.980	12.280	16.399	1'56.141	264.7	14:25'27.320	
5	32.927	32.468	21.956	12.137	16.421	1'55.909	268.0	14:27'23.229	
6	33.014	33.039	22.184	12.135	16.691	1'57.063	265.4	14:29'20.292	
7	33.360	32.941	22.240	12.209	16.458	1'57.208	268.0	14:31'17.500	

6° 81 L. STAPLEFORD (1'56.044)									
Lap	Seg. 1	Seg. 2	Seg. 3	Seg. 4	Seg. 5	Lap Time	km/h	Local Time	
1	33.653	36.528	24.274	17.391	17.149	2'15.878 C	263.4	14:02'20.516	
2	36.203	35.042	25.394	13.197	24.715	2'14.551 C	243.2	14:04'18.394	
3	14'03.879	34.363	23.245	12.162	16.902	15'30.551 P	266.7	14:06'32.945	
4	33.227	32.701	22.363	12.206	16.560	1'57.057	262.8	14:22'03.496	
5	33.257	32.462	22.190	12.163	16.535	1'56.607	264.1	14:24'00.553	
6	33.063	32.407	22.062	12.028	16.484	1'56.044	270.0	14:25'57.160	
7	33.148	32.465	22.074	12.053	16.673	1'56.413	265.4	14:27'53.204	
8	33.678	32.643	23.039	12.150	16.785	1'58.295	266.7	14:29'49.617	

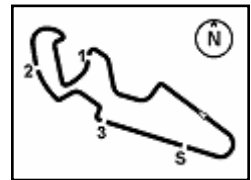
7° 63 Z. KHAIRUDDIN (1'56.310)									
Lap	Seg. 1	Seg. 2	Seg. 3	Seg. 4	Seg. 5	Lap Time	km/h	Local Time	
1	33.495	34.483	22.778	12.206	16.597	2'15.666 C	232.3	14:02'33.644	
2	16'00.503	36.907	24.145	15.077	16.581	17'33.213 P	250.0	14:04'49.310	
3	33.184	32.885	21.966	12.165	16.659	1'56.859	262.1	14:22'22.523	
4	35.761	36.882	22.891	12.317	16.520	2'04.371	263.4	14:24'19.382	
5	33.154	32.649	22.096	12.103	16.402	1'56.404	268.0	14:26'23.753	
6	33.077	38.980	26.084	18.135	18.041	2'14.317	264.7	14:28'20.157	
7	33.189	32.488	22.097	12.158	16.378	1'56.310	264.7	14:30'34.474	
8								14:32'30.784	

8° 77 K. RYDE (1'56.614)									
Lap	Seg. 1	Seg. 2	Seg. 3	Seg. 4	Seg. 5	Lap Time	km/h	Local Time	
1	34.934	35.193	24.361	15.840	18.182	2'07.465 C	265.4	14:02'15.194	
2	36.140	36.834	25.868	12.182	17.647	2'07.349 C	266.0	14:04'22.659	
3	14'34.420	33.398	22.693	12.233	16.576	15'59.320 P	266.0	14:06'35.480	
4	33.288	32.608	22.182	12.190	16.476	1'56.744	265.4	14:22'29.328	
5	38.749	36.546	25.115	19.634	23.943	2'23.987	266.0	14:24'26.072	
6	36.521	39.013	22.527	12.170	16.457	2'06.688	266.0	14:26'50.059	
7	33.130	32.704	22.157	12.189	16.434	1'56.614	266.7	14:28'56.747	
8	33.320	32.682	22.223	12.082	16.459	1'56.766	267.3	14:30'53.361	
								14:32'50.127	

9° 26 K. WATANABE (1'56.724)									
Lap	Seg. 1	Seg. 2	Seg. 3	Seg. 4	Seg. 5	Lap Time	km/h	Local Time	
1	34.282	35.680	24.343	14.180	17.354	2'18.521 C	248.3	14:02'12.900	
2	40.147	36.151	24.654	13.042	24.527	2'18.521 C	248.3	14:04'11.264	
3	14'09.451	33.955	23.516	12.410	16.695	15'36.027 P	260.9	14:06'29.785	
4	33.345	32.662	22.922	12.115	16.442	1'57.486	260.9	14:22'05.812	
5	32.969	32.625	22.449	12.296	16.473	1'56.812	260.9	14:23'03.298	
6	33.179	32.812	22.044	12.231	16.458	1'56.724	264.1	14:24'00.110	
7	47.240	34.968	22.810	13.662	17.521	2'16.201	237.4	14:26'56.834	
8	35.040	41.901	24.576	16.430	17.187	2'15.134	213.0	14:30'13.035	
								14:32'28.169	

10° 84 L. CRESSON (1'56.976)									
Lap	Seg. 1	Seg. 2	Seg. 3	Seg. 4	Seg. 5	Lap Time	km/h	Local Time	
1	33.668	34.225	23.012	11.995	16.585	2'05.447 C	266.7	14:02'39.328	
2	15'48.528	32.983	23.600	12.051	23.145	2'05.447 C	266.7	14:04'44.775	
3	33.500	32.872	22.550	11.928	16.680	1'57.530	269.3	14:06'35.480	
4	33.373	32.836	22.805	11.965	16.541	1'57.520	268.7	14:21'57.884	
5	37.485	32.867	22.782	11.864	18.154	2'03.152	274.8	14:23'55.414	
6	33.316	32.800	22.633	12.041	16.654	1'57.444	268.0	14:25'52.934	
7	33.289	32.698	22.549	11.936	16.504	1'56.976	272.0	14:27'56.086	
								14:29'53.530	
								14:31'50.506	

11° 38 H. SOOMER (1'57.333)									
Lap	Seg. 1	Seg. 2	Seg. 3	Seg. 4	Seg. 5	Lap Time	km/h	Local Time	
1	34.408	33.178	22.540	12.158	16.588	2'03.498 C	265.4	14:02'19.241	
2	36.452	34.306	24.651	12.761	24.534	2'12.704 C	254.7	14:04'22.739	
3	13'56.195	33.099	22.459	12.243	16.454	15'20.450 P	264.7	14:06'35.480	
4	32.890	32.837	23.102	12.242	16.822	3'21.973	262.1	14:21'55.893	
5	33.527	33.100	22.509	12.211	16.574	1'57.921	264.1	14:25'17.866	
6	33.469	32.841	22.138	12.281	16.604	1'57.333	262.1	14:27'15.787	
7	33.519	32.832	22.272	12.257	16.520	1'57.400	265.4	14:29'13.120	
								14:31'10.5	



Spanish Round, 31 March 1-2 April 2017

World Supersport - Chronological Analysis Superpole 1

4	33.522	32.962	22.666	12.229	16.388	1'57.767	259.6	14:24'05.254
5	42.010	33.901	23.662	14.118	17.646	2'11.337	208.9	14:26'16.591
6	33.587	33.018	22.610	12.094	16.432	1'57.741	264.7	14:28'14.332
7	33.602	32.779	22.601	12.294	16.662	1'57.938	258.4	14:30'12.270
8	33.659	33.186	24.585	15.390	26.124	2'12.944 P	189.1	14:32'25.214

15° 10 N. CALERO (1'57.787)								
Lap	Seg. 1	Seg. 2	Seg. 3	Seg. 4	Seg. 5	Lap Time	km/h	Local Time
		35.186	24.359	14.180	17.159		251.2	14:02'13.005
1	34.470	33.036	22.501	12.215	16.272	1'58.494 C	266.7	14:04'11.499
2	38.243	35.619	25.719	12.702	23.364	2'15.647 C	252.9	14:06'27.146
3	14'07.956	36.650	24.914	14.312	18.649	15'42.481 P	230.3	14:22'09.627
4	34.621	37.547	26.829	13.283	17.933	2'10.213	226.9	14:24'19.840
5	33.509	34.159	31.175	12.373	22.324	2'13.540	259.6	14:26'33.380
6	33.967	33.182	22.564	12.232	16.507	1'58.452	264.7	14:28'31.832
7	33.416	33.287	22.171	12.350	16.563	1'57.787	262.1	14:30'29.619
8	33.503	33.045	22.614	12.393	16.596	1'58.151	262.1	14:32'27.770

16° 69 X. CARDELUS GARCIA (1'57.970)								
Lap	Seg. 1	Seg. 2	Seg. 3	Seg. 4	Seg. 5	Lap Time	km/h	Local Time
		35.522	23.137	12.346	16.533		260.2	14:02'40.622
1	34.068	33.671	29.114	12.678	24.919	2'14.450 C	241.1	14:04'55.072
2	15'46.569	34.318	23.580	12.314	17.290	17'14.071 P	266.0	14:22'09.143
3	33.623	33.264	22.478	12.272	21.359	2'02.996	259.6	14:24'12.139
4	34.037	33.376	22.672	12.290	16.564	1'58.939	259.6	14:26'11.078
5	33.539	33.175	22.591	12.154	16.615	1'58.074	264.7	14:28'09.152
6	33.771	32.908	22.545	12.237	16.717	1'58.178	262.8	14:30'07.330
7	33.497	33.207	22.627	12.147	16.492	1'57.970	265.4	14:32'05.300

17° 83 L. EPIS (1'58.597)								
Lap	Seg. 1	Seg. 2	Seg. 3	Seg. 4	Seg. 5	Lap Time	km/h	Local Time
		36.737	24.079	13.118	17.403		247.1	14:02'12.488
1	38.215	51.896	1'12.786	16.328	32.445	3'31.670 C	187.2	14:05'44.158
2	14'50.890	34.613	23.974	13.825	18.220	16'21.522 P	208.9	14:22'05.680
3	34.167	33.635	22.937	12.159	16.535	1'59.433	262.1	14:24'05.113
4	34.859	39.445	25.030	13.583	16.704	2'09.621	254.1	14:26'14.734
5	33.572	33.218	25.103	12.231	16.690	2'00.814	260.9	14:28'15.548
6	33.747	33.225	29.177	16.302	21.784	2'14.235		14:30'29.783
7	33.800	33.169	23.068	12.211	16.349	1'58.597	264.7	14:32'28.380

18° 74 J. VAN SIKKELERUS (1'58.600)								
Lap	Seg. 1	Seg. 2	Seg. 3	Seg. 4	Seg. 5	Lap Time	km/h	Local Time
		35.588	24.935	12.627	17.626		254.7	14:02'13.455
1	34.819	33.419	23.007	12.474	16.984	2'00.703 C	257.8	14:04'14.158
2	38.140	36.290	25.681	13.076	23.690	2'16.877 C	238.4	14:06'31.035
3	14'07.643	34.423	24.006	12.576	16.950	15'35.598 P	252.3	14:22'06.633
4	33.853	33.745	22.725	12.322	16.904	1'59.549	259.0	14:24'06.182
5	34.066	33.573	22.624	12.435	16.820	1'59.518	256.5	14:26'05.700
6	33.848	33.344	22.703	12.368	16.977	1'59.240	260.2	14:28'04.940
7	33.955	35.906	23.089	12.568	18.083	2'03.601	256.5	14:30'08.541
8	33.603	33.304	22.455	12.451	16.787	1'58.600	257.8	14:32'07.141

19° 56 P. SEBESTYÉN (1'58.638)								
Lap	Seg. 1	Seg. 2	Seg. 3	Seg. 4	Seg. 5	Lap Time	km/h	Local Time
		33.939	28.167	12.270	16.772		261.5	14:02'27.005
1	33.521	33.171	24.406	12.340	24.211	2'07.649 C	260.2	14:04'34.654
2	16'00.673	35.198	23.596	12.920	16.893	17'29.280 P	257.1	14:22'03.934
3	33.905	34.369	22.896	12.114	16.722	2'00.006	263.4	14:24'03.940
4	33.691	42.433	23.260	13.447	16.955	2'09.786	243.2	14:26'13.726
5	33.930	33.145	22.886	12.054	16.623	1'58.638	268.0	14:28'12.364
6	33.708	33.289	23.103	12.687	17.459	2'00.246	255.3	14:30'12.610
7	33.698	33.240	22.714	12.304	16.796	1'58.752	260.2	14:32'11.362

20° 92 H. KUNIKAWA (1'59.015)								
Lap	Seg. 1	Seg. 2	Seg. 3	Seg. 4	Seg. 5	Lap Time	km/h	Local Time
		35.923	24.092	12.612	17.528		259.0	14:02'18.228
1	35.281	34.494	23.167	12.435	17.370	2'02.747 C	260.2	14:04'20.975
2	36.980	35.220	24.260	12.686	25.117	2'14.263 C	250.0	14:06'35.238
3	14'00.323	34.545	23.693	12.607	17.081	15'28.249 P	260.2	14:22'03.487
4	34.186	33.349	23.526	12.319	16.905	2'00.285	255.9	14:24'03.772
5	33.706	33.386	22.569	12.375	16.979	1'59.015	259.6	14:26'02.787
6	33.983	33.406	22.757	12.262	17.047	1'59.455	264.1	14:28'02.242
7	34.098	33.450	22.742	12.306	17.104	1'59.700	260.2	14:30'01.942
8	34.156	33.388	22.706	12.275	16.957	1'59.482	261.5	14:32'01.424

21° 73 J. CRETARO (1'59.382)								
Lap	Seg. 1	Seg. 2	Seg. 3	Seg. 4	Seg. 5	Lap Time	km/h	Local Time

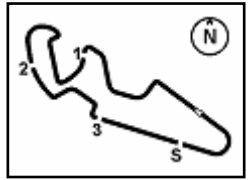
1	34.256	35.423	23.348	12.587	17.076		254.7	14:02'25.114
2	37.535	33.673	23.324	12.521	16.872	2'00.646 C	255.9	14:04'25.760
3	13'57.093	35.383	25.066	13.148	25.627	2'16.759 C	246.6	14:06'42.519
4	34.200	34.537	23.885	12.569	16.843	15'24.927 P	255.9	14:22'07.446
5	33.774	33.458	22.709	12.412	17.029	1'59.382	257.1	14:26'06.335
6	33.898	33.334	23.603	12.382	16.786	2'00.003	260.2	14:28'06.338
7	34.156	33.838	22.691	12.644	17.046	2'00.375	254.1	14:30'06.713
8	34.706	33.294	22.625	12.380	16.856	1'59.861	257.8	14:32'06.574

22° 9 C. LONDON (1'59.479)								
Lap	Seg. 1	Seg. 2	Seg. 3	Seg. 4	Seg. 5	Lap Time	km/h	Local Time
		36.911	24.605	12.694	17.702		252.9	14:02'13.844
1	35.635	34.602	30.026	12.553	17.055	2'09.871 C	259.6	14:04'23.715
2	38.990	35.505	24.371	12.646	23.009	2'14.521 C	256.5	14:06'38.236
3	13'55.980	34.546	23.089	12.587	16.775	15'22.977 P	258.4	14:22'01.213
4	34.354	34.089	22.807	12.588	16.770	2'00.608	256.5	14:24'01.821
5	33.948	33.702	22.655	12.670	16.504	1'59.479	258.4	14:26'01.300
6	37.182	36.850	29.192	12.529	16.671	2'12.424	260.2	14:28'13.724
7	34.729	34.034	23.021	12.587	16.782	2'01.153	257.1	14:30'14.877
8	34.411	40.296	23.901	12.633	17.147	2'08.388	257.1	14:32'23.265

23° 177 N. AL MALKI (1'59.917)								
Lap	Seg. 1	Seg. 2	Seg. 3	Seg. 4	Seg. 5	Lap Time	km/h	Local Time
		35.409	24.143	12.319	17.350		258.4	14:03'07.224
1	34.660	33.951	25.745	13.463	23.502	2'11.321 C	245.5	14:05'18.545
2	15'21.438	34.995	24.381	12.179	17.388	16'50.381 P	264.1	14:22'08.926
3	34.702	33.862	23.394	12.248	17.079	2'01.285	257.8	14:24'10.211
4	34.288	33.998	23.207	12.284	16.935	2'00.712	259.0	14:26'10.923
5	34.383	33.560	22.990	12.106	16.878	1'59.917	265.4	14:28'10.840

24° 7 D. PIZZOLI (2'04.532)								
Lap	Seg. 1	Seg. 2	Seg. 3	Seg. 4	Seg. 5	Lap Time	km/h	Local Time
		42.122	26.953	13.158	24.976		254.1	14:03'01.711
1	17'38.438	38.033	24.900	12.531	17.491	19'11.393 P	259.6	14:22'13.104
2	35.804	35.001	23.868	12.467	17.392	2'04.532	259.0	14:24'17.636
3	37.464	43.818	25.382	19.021	25.009	2'30.694		14:26'48.330
4	37.234	35.195	23.706	12.367	17.260	2'05.762	262.1	14:28'54.092
5	35.342	34.566	24.050	13.161	17.575	2'04.694	257.8	14:30'58.786

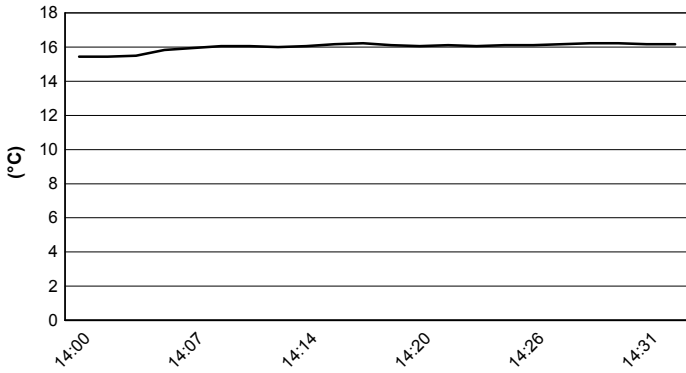
25° 13 A. WEST								
Lap	Seg. 1	Seg. 2	Seg. 3	Seg. 4	Seg. 5	Lap Time	km/h	Local Time
		34.256	23.478	12.266	16.747		259.6	14:02'26.295



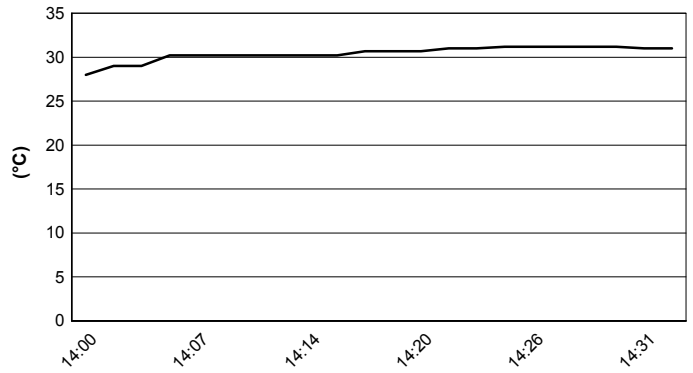
Spanish Round, 31 March 1-2 April 2017
World Supersport - Weather Report Superpole 1

Session started 14:00 Session ended 14:33

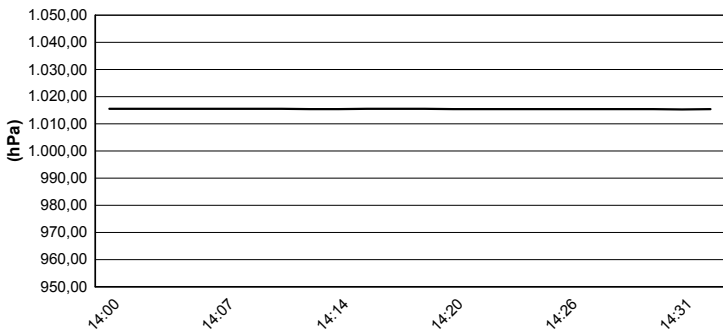
Air Temperature



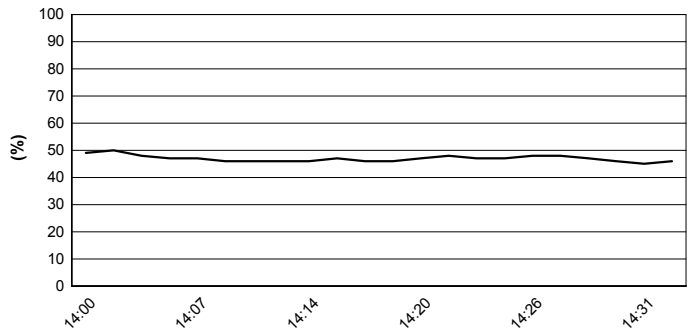
Track Temperature



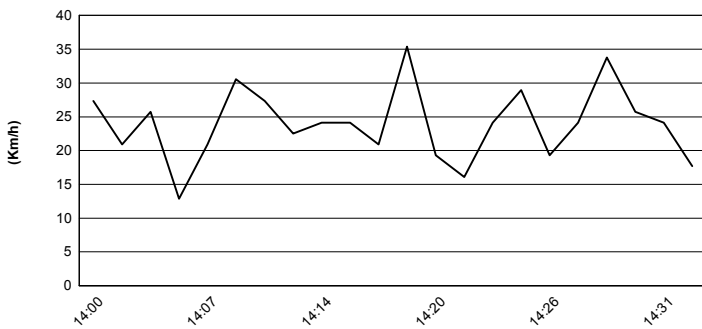
Air Pressure



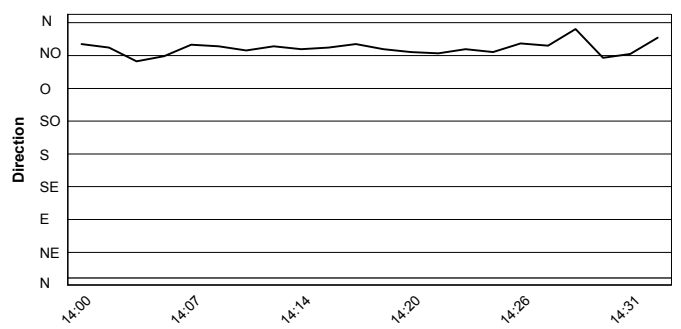
Humidity



Wind Speed



Wind Direction



01/04/2017

These data/results cannot be reproduced, stored and/or transmitted in whole or in part by any manner of electronic, mechanical, photocopying, recording, broadcasting or otherwise now known or herein after developed without the previous express consent by the copyright owner, except for reproduction in daily press and regular printed publications on sale to the public within 60 days of the event related to those data/results and always provided that copyright symbol appears together as follows below.

© DORNA WSBK ORGANIZATION Srl 2017

