

## Spanish Round, 20-21-22 October 2017

### World Supersport - Results Superpole 1

Jerez 4.423 m

1 / 2

No.	Rider	Nat	Team	Bike	Class	Time	Gap	Rel.	Laps	Speed	
										Avg	Max
1*	111 K. SMITH	GBR	GEMAR Team Lorini	Honda CBR600RR		<b>1'43.783</b>			7	153,424	<b>244,8</b>
2*	13 A. WEST	AUS	Kawasaki Puccetti Racing	Kawasaki ZX-6R		<b>1'44.036</b>	0.253	0.253	7	153,051	<b>244,2</b>
3	61 A. ZACCONE	ITA	MV Agusta Reparto Corse	MV Agusta F3 675	ESS	<b>1'44.182</b>	0.399	0.146	8	152,836	<b>239,0</b>
4	38 H. SOOMER	EST	WILSport Racedays	Honda CBR600RR	ESS	<b>1'44.213</b>	0.430	0.031	8	152,791	<b>243,2</b>
5	47 R. HARTOG	NED	Team Hartog - Jenik - Against Cancer	Kawasaki ZX-6R	ESS	<b>1'44.350</b>	0.567	0.137	8	152,590	<b>242,6</b>
6	4 G. REA	GBR	Team Kawasaki Go Eleven	Kawasaki ZX-6R		<b>1'44.400</b>	0.617	0.050	7	152,517	<b>240,0</b>
7	35 S. HILL	GBR	Profile Racing	Triumph Daytona 675		<b>1'44.449</b>	0.666	0.049	8	152,446	<b>242,1</b>
8	5 A. BASSANI	ITA	Kawasaki Puccetti Racing	Kawasaki ZX-6R		<b>1'44.504</b>	0.721	0.055	8	152,365	<b>244,8</b>
9	25 A. BALDOLINI	ITA	Race Department ATK#25	Yamaha YZF R6		<b>1'44.534</b>	0.751	0.030	8	152,322	<b>246,9</b>
10	78 H. OKUBO	JPN	CIA Landlord Insurance Honda	Honda CBR600RR		<b>1'44.658</b>	0.875	0.124	8	152,141	<b>241,0</b>
11	71 C. BERGMAN	SWE	CIA Landlord Insurance Honda	Honda CBR600RR		<b>1'44.703</b>	0.920	0.045	8	152,076	<b>240,5</b>
12	63 Z. KHAIRUDDIN	MAS	Orelac Racing VerdNatura	Kawasaki ZX-6R		<b>1'44.801</b>	1.018	0.098	8	151,934	<b>238,5</b>
13	26 K. WATANABE	JPN	Team Kawasaki Go Eleven	Kawasaki ZX-6R		<b>1'45.412</b>	1.629	0.611	7	151,053	<b>242,1</b>
14	74 J. VAN SIKKELERUS	NED	MVR Racing	Yamaha YZF R6	ESS	<b>1'45.648</b>	1.865	0.236	8	150,716	<b>242,6</b>
15	69 X. CARDELUS	AND	Race Department ATK#25	Yamaha YZF R6		<b>1'45.712</b>	1.929	0.064	9	150,624	<b>243,2</b>
16	56 P. SEBESTYÉN	HUN	SSP Hungary by Pedercini Racing	Kawasaki ZX-6R	ESS	<b>1'46.026</b>	2.243	0.314	8	150,178	<b>241,0</b>
17	17 M. PONS	ESP	DS Junior Team	Kawasaki ZX-6R		<b>1'46.041</b>	2.258	0.015	7	150,157	<b>231,0</b>
18	10 N. CALERO	ESP	Orelac Racing VerdNatura	Kawasaki ZX-6R		<b>1'46.138</b>	2.355	0.097	8	150,020	<b>237,4</b>
19	83 L. EPIS	AUS	Response RE Racing	Kawasaki ZX-6R		<b>1'46.185</b>	2.402	0.047	8	149,953	<b>239,0</b>
20	97 M. SCHEIB	CHI	DR7 AMR	Kawasaki ZX-6R		<b>1'46.698</b>	2.915	0.513	9	149,232	<b>240,5</b>
21	48 G. SCARCELLA	AUS	GEMAR Team Lorini	Honda CBR600RR		<b>1'47.699</b>	3.916	1.001	7	147,845	<b>236,9</b>
22	88 K. COGHLAN	GBR	MVR Racing	Yamaha YZF R6					0		

\* Qualified to Superpole 2

AIR	Humidity:	65%	Temp:	25°C
TRACK	Condition:	Dry	Temp:	36°C

Records	Pole (SP2)	2016 K.Sofuoglu	1'42.969	154,640	Km/h
	Race	2013 S.Lowes	1'44.111	152,940	Km/h
	Circuit (SP2)	2016 K.Sofuoglu	1'42.969	154,640	Km/h

Start 14:10  
End 14:27

The results are provisional until the end of the time limit for protests and appeals and the completion of the technical checks.

These data/results cannot be reproduced, stored and/or transmitted in whole or in part by any manner of electronic, mechanical, photocopying, recording, broadcasting or otherwise now known or herein after developed without the previous express consent by the copyright owner, except for reproduction in daily press and regular printed publications on sale to the public within 60 days of the event related to those data/results and always provided that copyright symbol appears together as follows below.

© DORNA WSBK ORGANIZATION Srl 2017

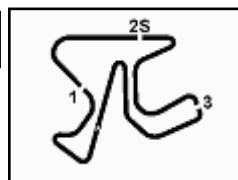
FICR PERUGIA TIMING



Official Tyre Supplier



Official Timekeeper



## Spanish Round, 20-21-22 October 2017

### World Supersport - Results Superpole 1

#### Session Highlights

Local Time	No. Rider	Description
14.10.00		Start
14.25.46	4 G. REA	Lap Cancelled (1'45.034) - Exceeded Track Limits - Turn 13
14.27.01		End Of Session

#### Fastest Laps Sequence

No.	Rider	Nat	Team	Bike	Local Time	Time	Gap	Avg
61	A. ZACCONE	ITA	MV Agusta Reparto Corse	MV Agusta F3 675	14:13'40.532	<b>1'46.002</b>		150,212
111	K. SMITH	GBR	GEMAR Team Lorini	Honda CBR600RR	14:13'41.557	<b>1'44.575</b>	-1.427	152,262
13	A. WEST	AUS	Kawasaki Puccetti Racing	Kawasaki ZX-6R	14:13'46.229	<b>1'44.428</b>	-0.147	152,476
111	K. SMITH	GBR	GEMAR Team Lorini	Honda CBR600RR	14:15'25.833	<b>1'44.276</b>	-0.152	152,699
38	H. SOOMER	EST	WILSport Racedays	Honda CBR600RR	14:22'27.489	<b>1'44.213</b>	-0.063	152,791
61	A. ZACCONE	ITA	MV Agusta Reparto Corse	MV Agusta F3 675	14:23'00.661	<b>1'44.182</b>	-0.031	152,836
111	K. SMITH	GBR	GEMAR Team Lorini	Honda CBR600RR	14:23'18.093	<b>1'43.783</b>	-0.399	153,424

21/10/2017      Start      End      The results are provisional until the end of the time limit for protests and appeals  
14.10      14:27      and the completion of the technical checks.

These data/results cannot be reproduced, stored and/or transmitted in whole or in part by any manner of electronic, mechanical, photocopying, recording, broadcasting or otherwise now known or herein after developed without the previous express consent by the copyright owner, except for reproduction in daily press and regular printed publications on sale to the public within 60 days of the event related to those data/results and always provided that copyright symbol appears together as follows below.

© DORNA WSBK ORGANIZATION Srl 2017



## Spanish Round, 20-21-22 October 2017

### World Supersport - Best Sector & Speed Superpole 1

Jerez 4.423 m

BEST LAP			
1	111 K. SMITH	Honda CBR600RR	1'43.783
2	13 A. WEST	Kawasaki ZX-6R	1'44.036
3	61 A. ZACCONE	MV Agusta F3 675	1'44.182
4	38 H. SOOMER	Honda CBR600RR	1'44.213
5	47 R. HARTOG	Kawasaki ZX-6R	1'44.350
6	4 G. REA	Kawasaki ZX-6R	1'44.400
7	35 S. HILL	Triumph Daytona 675	1'44.449
8	5 A. BASSANI	Kawasaki ZX-6R	1'44.504
9	25 A. BALDOLINI	Yamaha YZF R6	1'44.534
10	78 H. OKUBO	Honda CBR600RR	1'44.658
11	71 C. BERGMAN	Honda CBR600RR	1'44.703
12	63 Z. KHAIRUDDIN	Kawasaki ZX-6R	1'44.801
13	26 K. WATANABE	Kawasaki ZX-6R	1'45.412
14	74 J. VAN SIKKELERUS	Yamaha YZF R6	1'45.648
15	69 X. CARDELUS	Yamaha YZF R6	1'45.712
16	56 P. SEBESTYÉN	Kawasaki ZX-6R	1'46.026
17	17 M. PONS	Kawasaki ZX-6R	1'46.041
18	10 N. CALERO	Kawasaki ZX-6R	1'46.138
19	83 L. EPIS	Kawasaki ZX-6R	1'46.185
20	97 M. SCHEIB	Kawasaki ZX-6R	1'46.698
21	48 G. SCARCELLA	Honda CBR600RR	1'47.699
22	88 K. COGHLAN	Yamaha YZF R6	

SPEED			
1	25 A. BALDOLINI	Yamaha YZF R6	246,9
2	5 A. BASSANI	Kawasaki ZX-6R	244,8
3	111 K. SMITH	Honda CBR600RR	244,8
4	13 A. WEST	Kawasaki ZX-6R	244,2
5	38 H. SOOMER	Honda CBR600RR	243,2
6	69 X. CARDELUS	Yamaha YZF R6	243,2
7	74 J. VAN SIKKELERUS	Yamaha YZF R6	242,6
8	47 R. HARTOG	Kawasaki ZX-6R	242,6
9	26 K. WATANABE	Kawasaki ZX-6R	242,1
10	35 S. HILL	Triumph Daytona 675	242,1
11	78 H. OKUBO	Honda CBR600RR	241,0
12	56 P. SEBESTYÉN	Kawasaki ZX-6R	241,0
13	97 M. SCHEIB	Kawasaki ZX-6R	240,5
14	71 C. BERGMAN	Honda CBR600RR	240,5
15	4 G. REA	Kawasaki ZX-6R	240,0
16	61 A. ZACCONE	MV Agusta F3 675	239,0
17	83 L. EPIS	Kawasaki ZX-6R	239,0
18	63 Z. KHAIRUDDIN	Kawasaki ZX-6R	238,5
19	10 N. CALERO	Kawasaki ZX-6R	237,4
20	48 G. SCARCELLA	Honda CBR600RR	236,9
21	17 M. PONS	Kawasaki ZX-6R	231,0

SEG. 1			SEG. 2			SEG. 3			SEG. 4		
1	13 A. WEST	26.105	1	5 A. BASSANI	14.767	1	38 H. SOOMER	29.561	1	38 H. SOOMER	33.073
2	61 A. ZACCONE	26.199	2	35 S. HILL	14.843	2	61 A. ZACCONE	29.584	2	35 S. HILL	33.086
3	111 K. SMITH	26.221	3	25 A. BALDOLINI	14.844	3	111 K. SMITH	29.620	3	111 K. SMITH	33.092
4	4 G. REA	26.363	4	47 R. HARTOG	14.849	4	13 A. WEST	29.630	4	61 A. ZACCONE	33.186
5	25 A. BALDOLINI	26.371	5	111 K. SMITH	14.850	5	47 R. HARTOG	29.719	5	13 A. WEST	33.207
6	47 R. HARTOG	26.429	6	13 A. WEST	14.872	6	5 A. BASSANI	29.736	6	5 A. BASSANI	33.216
7	78 H. OKUBO	26.445	7	71 C. BERGMAN	14.877	7	78 H. OKUBO	29.748	7	71 C. BERGMAN	33.217
8	35 S. HILL	26.445	8	78 H. OKUBO	14.902	8	63 Z. KHAIRUDDIN	29.756	8	47 R. HARTOG	33.268
9	5 A. BASSANI	26.509	9	38 H. SOOMER	14.915	9	4 G. REA	29.764	9	4 G. REA	33.306
10	63 Z. KHAIRUDDIN	26.513	10	4 G. REA	14.967	10	25 A. BALDOLINI	29.861	10	25 A. BALDOLINI	33.308
11	38 H. SOOMER	26.514	11	56 P. SEBESTYÉN	14.983	11	35 S. HILL	29.935	11	78 H. OKUBO	33.355
12	71 C. BERGMAN	26.529	12	69 X. CARDELUS	15.014	12	74 J. VAN SIKKELER	29.993	12	63 Z. KHAIRUDDIN	33.374
13	26 K. WATANABE	26.557	13	97 M. SCHEIB	15.017	13	71 C. BERGMAN	30.015	13	69 X. CARDELUS	33.577
14	69 X. CARDELUS	26.596	14	63 Z. KHAIRUDDIN	15.058	14	26 K. WATANABE	30.016	14	26 K. WATANABE	33.593
15	83 L. EPIS	26.722	15	83 L. EPIS	15.062	15	56 P. SEBESTYÉN	30.103	15	74 J. VAN SIKKELER	33.694
16	74 J. VAN SIKKELER	26.811	16	61 A. ZACCONE	15.091	16	10 N. CALERO	30.132	16	17 M. PONS	33.695
17	17 M. PONS	26.813	17	74 J. VAN SIKKELER	15.142	17	17 M. PONS	30.192	17	97 M. SCHEIB	33.864
18	10 N. CALERO	26.920	18	10 N. CALERO	15.142	18	83 L. EPIS	30.246	18	10 N. CALERO	33.888
19	56 P. SEBESTYÉN	26.945	19	26 K. WATANABE	15.153	19	69 X. CARDELUS	30.281	19	56 P. SEBESTYÉN	33.945
20	97 M. SCHEIB	27.068	20	48 G. SCARCELLA	15.157	20	97 M. SCHEIB	30.398	20	83 L. EPIS	34.014
21	48 G. SCARCELLA	27.483	21	17 M. PONS	15.201	21	48 G. SCARCELLA	30.612	21	48 G. SCARCELLA	34.078

21/10/2017

These data/results cannot be reproduced, stored and/or transmitted in whole or in part by any manner of electronic, mechanical, photocopying, recording, broadcasting or otherwise now known or herein after developed without the previous express consent by the copyright owner, except for reproduction in daily press and regular printed publications on sale to the public within 60 days of the event related to those data/results and always provided that copyright symbol appears together as follows below.

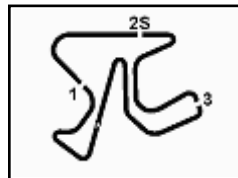
© DORNA WSBK ORGANIZATION Srl 2017

**FICR PERUGIA TIMING**


Official Tyre Supplier



Official Timekeeper



## Spanish Round, 20-21-22 October 2017

### World Supersport - Ideal Times Superpole 1

Jerez 4.423 m

Rider No.	Nat	Bike	Seg. 1 Diff. 1	Seg. 2 Diff. 2	Seg. 3 Diff. 3	Seg. 4 Diff. 4	Ideal Time		
							Best Lap	Pos.	Diff.
1 111 K. SMITH	GBR	Honda CBR600RR	26.221	14.850	29.620	33.092	<b>1'43.783</b> 1'43.783	2	
2 13 A. WEST	AUS	Kawasaki ZX-6R	<b>26.105</b>	14.872 0.033	29.630	33.207 0.189	<b>1'43.814</b> 1'44.036	3	0.222
3 61 A. ZACCONE	ITA	MV Agusta F3 675	26.199 0.093	15.091 0.029	29.584	33.186	<b>1'44.060</b> 1'44.182	4	0.122
4 38 H. SOOMER	EST	Honda CBR600RR	26.514 0.124	14.915 0.026	<b>29.561</b>	<b>33.073</b>	<b>1'44.063</b> 1'44.213	5	0.150
5 5 A. BASSANI	ITA	Kawasaki ZX-6R	26.509 0.099	<b>14.767</b> 0.174	29.736	33.216 0.003	<b>1'44.228</b> 1'44.504	9	0.276
6 47 R. HARTOG	NED	Kawasaki ZX-6R	26.429	14.849 0.085	29.719	33.268	<b>1'44.265</b> 1'44.350	6	0.085
7 35 S. HILL	GBR	Triumph Daytona 675	26.445 0.024	14.843 0.116	29.935	33.086	<b>1'44.309</b> 1'44.449	8	0.140
8 25 A. BALDOLINI	ITA	Yamaha YZF R6	26.371 0.073	14.844 0.077	29.861	33.308	<b>1'44.384</b> 1'44.534	10	0.150
9 4 G. REA	GBR	Kawasaki ZX-6R	26.363	14.967	29.764	33.306	<b>1'44.400</b> 1'44.400	7	
10 78 H. OKUBO	JPN	Honda CBR600RR	26.445	14.902 0.042	29.748 0.047	33.355 0.119	<b>1'44.450</b> 1'44.658	11	0.208
11 71 C. BERGMAN	SWE	Honda CBR600RR	26.529	14.877 0.065	30.015	33.217	<b>1'44.638</b> 1'44.703	12	0.065
12 63 Z. KHAIRUDDIN	MAS	Kawasaki ZX-6R	26.513	15.058	29.756	33.374 0.100	<b>1'44.701</b> 1'44.801	13	0.100
13 26 K. WATANABE	JPN	Kawasaki ZX-6R	26.557 0.056	15.153 0.037	30.016	33.593	<b>1'45.319</b> 1'45.412	14	0.093
14 69 X. CARDELUS	AND	Yamaha YZF R6	26.596	15.014 0.042	30.281 0.202	33.577	<b>1'45.468</b> 1'45.712	16	0.244
15 74 J. VAN SIKKELERUS	NED	Yamaha YZF R6	26.811	15.142 0.008	29.993	33.694	<b>1'45.640</b> 1'45.648	15	0.008
16 17 M. PONS	ESP	Kawasaki ZX-6R	26.813	15.201 0.013	30.192	33.695 0.127	<b>1'45.901</b> 1'46.041	18	0.140
17 56 P. SEBESTYÉN	HUN	Kawasaki ZX-6R	26.945	14.983	30.103	33.945 0.050	<b>1'45.976</b> 1'46.026	17	0.050
18 83 L. EPIS	AUS	Kawasaki ZX-6R	26.722	15.062 0.141	30.246	34.014	<b>1'46.044</b> 1'46.185	20	0.141
19 10 N. CALERO	ESP	Kawasaki ZX-6R	26.920 0.014	15.142 0.042	30.132	33.888	<b>1'46.082</b> 1'46.138	19	0.056
20 97 M. SCHEIB	CHI	Kawasaki ZX-6R	27.068 0.091	15.017 0.013	30.398 0.247	33.864	<b>1'46.347</b> 1'46.698	21	0.351
21 48 G. SCARCELLA	AUS	Honda CBR600RR	27.483	15.157 0.252	30.612 0.117	34.078	<b>1'47.330</b> 1'47.699	22	0.369
<b>Overall Ideal Time</b>			26.105	14.767	29.561	33.073	<b>1'43.506</b>		

21/10/2017

These data/results cannot be reproduced, stored and/or transmitted in whole or in part by any manner of electronic, mechanical, photocopying, recording, broadcasting or otherwise now known or herein after developed without the previous express consent by the copyright owner, except for reproduction in daily press and regular printed publications on sale to the public within 60 days of the event related to those data/results and always provided that copyright symbol appears together as follows below.

© DORNA WSBK ORGANIZATION Srl 2017

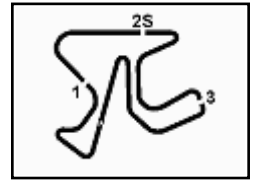
FICR PERUGIA TIMING



Official Tyre Supplier



Official Timekeeper



### Spanish Round, 20-21-22 October 2017

### World Supersport - Chronological Analysis Superpole 1

Jerez 4.423 m

**1 / 2**

1° 111 K. SMITH (1'43.783)							
Lap	Seg.1	Seg.2	Seg.3	Seg.4	Lap Time	km/h	Local Time
							14:10'05.782
1	31.286	15.506	30.705	33.703	1'51.200P	238,5	14:11'56.982
2	26.401	14.879	29.941	33.354	1'44.575	242,6	14:13'41.557
3	26.457	14.881	29.817	33.121	1'44.276	<b>244,8</b>	14:15'25.833
4	26.825	15.070	30.150	3'05.451	4'17.496P	239,5	14:19'43.329
5	31.930	15.387	30.373	33.291	1'50.981P	236,4	14:21'34.310
6	<b>26.221</b>	<b>14.850</b>	<b>29.620</b>	<b>33.092</b>	<b>1'43.783</b>	240,5	14:23'18.093
7	26.273	15.083	29.962	33.373	1'44.691	237,4	14:25'02.784

4	27.074	15.143	30.704	2'46.182	3'59.103P	237,9	14:19'56.630
5	30.962	15.066	29.898	33.805	1'49.731P	237,4	14:21'46.361
6	<b>26.363</b>	<b>14.967</b>	<b>29.764</b>	<b>33.306</b>	<b>1'44.400</b>	238,5	14:23'30.761
7	26.471	15.003	30.155	33.405	1'45.034C	237,9	14:25'15.795

2° 13 A. WEST (1'44.036)							
Lap	Seg.1	Seg.2	Seg.3	Seg.4	Lap Time	km/h	Local Time
							14:10'04.238
1	34.339	15.461	31.284	36.479	1'57.563P	237,9	14:12'01.801
2	26.657	<b>14.872</b>	29.673	33.226	1'44.428	241,0	14:13'46.229
3	26.974	14.884	29.890	<b>33.207</b>	1'44.955	<b>244,2</b>	14:15'31.184
4	26.892	15.088	30.112	4'08.298	5'20.390P	238,5	14:20'51.574
5	30.995	15.613	31.628	38.481	1'56.717P	234,9	14:22'48.291
6	26.541	15.065	29.641	33.478	1'44.725	242,1	14:24'33.016
7	<b>26.105</b>	14.905	<b>29.630</b>	33.396	<b>1'44.036</b>	239,5	14:26'17.052

7° 35 S. HILL (1'44.449)							
Lap	Seg.1	Seg.2	Seg.3	Seg.4	Lap Time	km/h	Local Time
							14:10'04.897
1	32.863	15.692	31.506	39.890	1'59.951P	234,9	14:12'04.848
2	26.708	<b>14.843</b>	30.240	33.451	1'45.242	<b>242,1</b>	14:13'50.090
3	26.544	14.936	30.285	33.319	1'45.084	240,5	14:15'35.174
4	26.828	15.048	30.841	2'31.540	3'44.257P	239,5	14:19'19.431
5	32.108	16.425	31.950	34.717	1'55.200P	232,0	14:21'14.631
6	<b>26.445</b>	14.984	30.088	33.216	1'44.733	239,5	14:22'59.364
7	26.469	14.959	<b>29.935</b>	<b>33.086</b>	<b>1'44.449</b>	239,5	14:24'43.813
8	26.494	15.092	30.225	33.966	1'45.777	236,9	14:26'29.590

3° 61 A. ZACCONE (1'44.182)							
Lap	Seg.1	Seg.2	Seg.3	Seg.4	Lap Time	km/h	Local Time
							14:10'02.781
1	31.176	15.507	30.949	34.117	1'51.749P	234,9	14:11'54.530
2	26.848	15.309	30.075	33.770	1'46.002	235,9	14:13'40.532
3	26.482	15.258	29.934	33.626	1'45.300	235,9	14:15'25.832
4	27.267	15.266	30.828	2'41.677	3'55.038P	236,4	14:19'20.870
5	33.205	16.043	31.687	34.674	1'55.609P	224,0	14:21'16.479
6	26.292	15.120	<b>29.584</b>	<b>33.186</b>	<b>1'44.182</b>	<b>239,0</b>	14:23'00.661
7	26.297	15.137	29.656	33.223	1'44.313	237,4	14:24'44.974
8	<b>26.199</b>	<b>15.091</b>	29.769	33.415	1'44.474	238,5	14:26'29.448

8° 5 A. BASSANI (1'44.504)							
Lap	Seg.1	Seg.2	Seg.3	Seg.4	Lap Time	km/h	Local Time
							14:10'03.147
1	34.479	15.422	31.119	34.341	1'55.361P	243,2	14:11'58.508
2	27.022	<b>14.767</b>	30.036	33.646	1'45.471	<b>244,8</b>	14:13'43.979
3	26.738	14.901	29.767	<b>33.216</b>	1'44.622	242,1	14:15'28.601
4	26.699	14.861	29.900	2'49.464	4'00.924P	243,7	14:19'29.525
5	35.517	15.457	33.562	33.900	1'58.436P	239,0	14:21'27.961
6	26.661	14.894	29.924	33.266	1'44.745	242,6	14:23'12.706
7	26.608	14.941	<b>29.736</b>	33.219	<b>1'44.504</b>	240,0	14:24'57.210
8	<b>26.509</b>	14.898	30.108	33.516	1'45.031	242,6	14:26'42.241

4° 38 H. SOOMER (1'44.213)							
Lap	Seg.1	Seg.2	Seg.3	Seg.4	Lap Time	km/h	Local Time
							14:10'05.611
1	32.236	15.327	31.207	34.340	1'53.110P	<b>243,2</b>	14:11'58.721
2	26.913	14.949	30.125	33.851	1'45.838	242,6	14:13'44.559
3	26.756	15.032	29.851	33.310	1'44.949	<b>243,2</b>	14:15'29.508
4	26.519	<b>14.915</b>	29.690	2'13.670	3'24.794P	241,0	14:18'54.302
5	30.380	15.032	30.069	33.493	1'48.974P	237,4	14:20'43.276
6	26.638	14.941	<b>29.561</b>	<b>33.073</b>	<b>1'44.213</b>	239,0	14:22'27.489
7	26.563	14.981	29.806	33.462	1'44.812	239,0	14:24'12.301
8	<b>26.514</b>	15.073	29.722	33.595	1'44.904	237,9	14:25'57.205

9° 25 A. BALDOLINI (1'44.534)							
Lap	Seg.1	Seg.2	Seg.3	Seg.4	Lap Time	km/h	Local Time
							14:10'06.630
1	32.163	15.581	31.394	36.945	1'56.083P	240,0	14:12'02.713
2	27.212	<b>14.844</b>	29.952	33.483	1'45.491	<b>246,9</b>	14:13'48.204
3	26.519	14.931	30.169	33.543	1'45.162	246,4	14:15'33.366
4	27.092	15.113	30.287	2'47.288	3'59.780P	243,7	14:19'33.146
5	32.254	15.366	33.664	33.787	1'55.071P	242,6	14:21'28.217
6	26.615	14.858	30.130	33.348	1'44.951	245,3	14:23'13.168
7	26.444	14.921	<b>29.861</b>	<b>33.308</b>	<b>1'44.534</b>	243,7	14:24'57.702
8	<b>26.371</b>	14.929	29.988	33.463	1'44.751	244,2	14:26'42.453

5° 47 R. HARTOG (1'44.350)							
Lap	Seg.1	Seg.2	Seg.3	Seg.4	Lap Time	km/h	Local Time
							14:10'09.032
1	31.655	15.271	31.127	34.859	1'52.912P	240,0	14:12'01.944
2	27.091	<b>14.849</b>	30.095	33.721	1'45.756	241,6	14:13'47.700
3	26.628	14.919	30.124	33.615	1'45.286	<b>242,6</b>	14:15'32.986
4	26.937	15.055	30.570	2'16.537	3'29.099P	241,6	14:19'02.085
5	30.739	15.046	30.147	33.631	1'49.563P	237,9	14:20'51.648
6	26.840	15.147	30.019	33.559	1'45.565	236,4	14:22'37.213
7	<b>26.429</b>	14.934	<b>29.719</b>	<b>33.268</b>	<b>1'44.350</b>	239,0	14:24'21.563
8	26.457	14.924	29.762	33.331	1'44.474	239,0	14:26'06.037

10° 78 H. OKUBO (1'44.658)							
Lap	Seg.1	Seg.2	Seg.3	Seg.4	Lap Time	km/h	Local Time
							14:10'07.442
1	31.206	15.624	31.740	34.943	1'53.513P	240,0	14:12'00.955
2	26.590	<b>14.902</b>	30.059	<b>33.355</b>	1'44.906	240,0	14:13'45.861
3	26.672	14.912	<b>29.748</b>	33.413	1'44.745	<b>241,0</b>	14:15'30.606
4	28.105	16.113	31.822	2'22.324	3'38.364P	206,9	14:19'08.970
5	34.880	15.593	30.481	33.651	1'54.605P	234,9	14:21'03.575
6	<b>26.445</b>	14.944	29.795	33.474	<b>1'44.658</b>	240,0	14:22'48.233
7	26.561	15.075	30.376	34.949	1'46.961	239,0	14:24'35.194
8	26.466	15.160	30.022	33.479	1'45.127	236,9	14:26'20.321

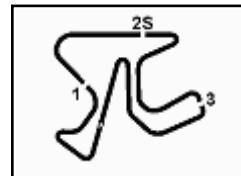
6° 4 G. REA (1'44.400)							
Lap	Seg.1	Seg.2	Seg.3	Seg.4	Lap Time	km/h	Local Time
							14:10'23.079
1	30.737	15.309	39.425	38.174	2'03.645P	232,9	14:12'26.724
2	26.658	15.219	30.021	33.476	1'45.374	239,0	14:14'12.098
3	26.565	14.994	29.931	33.939	1'45.429	<b>240,0</b>	14:15'57.527

11° 71 C. BERGMAN (1'44.703)							
Lap	Seg.1	Seg.2	Seg.3	Seg.4	Lap Time	km/h	Local Time
							14:10'03.499
1	32.739	15.647	31.698	33.992	1'54.076P	237,9	14:11'57.575
2	27.132	15.169	30.652	33.668	1'46.621	240,0	14:13'44.196
3	26.944	15.097	30.609	2'36.917	3'49.567P	<b>240,5</b>	14:17'33.763
4	33.035	15.993	32.026	34.000	1'55.054P	231,5	14:19'28.817
5	26.648	<b>14.877</b>	30.453	33.596	1'45.574	240,0	14:21'14.391
6	<b>26.529</b>	14.942	<b>30.015</b>	<b>33.217</b>	<b>1'44.703</b>	238,5	14:22'59.094
7	26.531	14.989	31.599	35.158	1'48.277	237,9	14:24'47.371
8	26.546	15.028	30.219	33.324	1'45.117	239,5	14:26'32.488

21/10/2017

**P = Pits In/Out - C = Lap-Time Cancelled**

These data/results cannot be reproduced, stored and/or transmitted in whole or in part by any manner of electronic, mechanical, photocopying, recording, broadcasting or otherwise now known or herein after developed without the previous express consent by the copyright owner, except for reproduction in daily press and regular printed publications on sale to the public within 60 days of the event related to those data/results and always provided that copyright symbol appears together as follows below.



Jerez 4.423 m

## Spanish Round, 20-21-22 October 2017

### World Supersport - Chronological Analysis Superpole 1

2 / 2

#### 12° 63 Z. KHAIRUDDIN (1'44.801)

Lap	Seg.1	Seg.2	Seg.3	Seg.4	Lap Time	km/h	Local Time
14:10'18.855							
1	32.091	15.714	40.286	37.409	2'05.500P	235,9	14:12'24.355
2	26.677	15.153	29.911	33.718	1'45.459	237,4	14:14'09.814
3	<b>26.513</b>	<b>15.058</b>	<b>29.756</b>	33.474	<b>1'44.801</b>	237,9	14:15'54.615
4	28.494	16.044	32.161	2'10.524	3'27.223P	234,9	14:19'21.838
5	37.319	15.233	30.846	33.961	1'57.359P	237,4	14:21'19.197
6	27.650	15.216	30.309	33.700	1'46.875	<b>238,5</b>	14:23'06.072
7	26.538	15.152	29.809	<b>33.374</b>	1'44.873	236,9	14:24'50.945
8	26.626	15.109	29.961	33.624	1'45.320	<b>238,5</b>	14:26'36.265

2	26.840	<b>15.201</b>	30.819	33.783	1'46.643	230,0	14:14'36.889
3	26.952	15.235	30.353	34.006	1'46.546	229,6	14:16'23.435
4	26.996	15.295	30.485	33.856	1'46.632	229,1	14:18'10.067
5	<b>26.813</b>	15.214	<b>30.192</b>	33.822	<b>1'46.041</b>	230,5	14:19'56.108
6	26.946	15.220	30.661	2'32.935	3'45.762P	<b>231,0</b>	14:23'41.870
7	30.784	15.264	30.606	<b>33.695</b>	1'50.349P	<b>231,0</b>	14:25'32.219

#### 13° 26 K. WATANABE (1'45.412)

Lap	Seg.1	Seg.2	Seg.3	Seg.4	Lap Time	km/h	Local Time
14:10'04.040							
1	32.776	15.746	31.441	34.690	1'54.653P	234,4	14:11'58.693
2	27.257	<b>15.153</b>	30.537	33.937	1'46.884	240,0	14:13'45.577
3	26.922	<b>15.153</b>	30.490	3'27.850	4'40.415P	<b>242,1</b>	14:18'25.992
4	37.270	16.166	31.989	34.729	2'00.154P	229,6	14:20'26.146
5	<b>26.557</b>	15.200	30.519	33.760	1'46.036	235,4	14:22'12.182
6	27.450	17.445	34.521	41.050	2'00.466	198,0	14:24'12.648
7	26.613	15.190	<b>30.016</b>	<b>33.593</b>	<b>1'45.412</b>	237,4	14:25'58.060

#### 18° 10 N. CALERO (1'46.138)

Lap	Seg.1	Seg.2	Seg.3	Seg.4	Lap Time	km/h	Local Time
14:10'03.415							
1	30.830	15.307	31.066	34.047	1'51.250P	<b>237,4</b>	14:11'54.665
2	26.934	15.184	<b>30.132</b>	<b>33.888</b>	<b>1'46.138</b>	234,9	14:13'40.803
3	<b>26.920</b>	15.153	30.589	2'11.511	3'24.173P	236,9	14:17'04.976
4	34.768	16.169	35.514	36.342	2'02.793P	200,1	14:19'07.769
5	27.428	15.195	30.649	36.565	1'49.837	234,9	14:20'57.606
6	26.976	15.267	30.425	38.099	1'50.767	234,9	14:22'48.373
7	27.089	<b>15.142</b>	30.363	34.110	1'46.704	236,4	14:24'35.077
8	26.982	15.152	30.239	33.939	1'46.312	236,9	14:26'21.389

#### 14° 74 J. VAN SIKKELERUS (1'45.648)

Lap	Seg.1	Seg.2	Seg.3	Seg.4	Lap Time	km/h	Local Time
14:10'03.703							
1	33.288	15.864	31.701	34.482	1'55.335P	237,9	14:11'59.038
2	27.158	15.149	30.455	33.979	1'46.741	239,5	14:13'45.779
3	27.394	15.190	30.229	34.143	1'46.956	<b>242,6</b>	14:15'32.735
4	26.958	<b>15.142</b>	30.177	33.766	1'46.043	237,9	14:17'18.778
5	27.401	15.385	30.907	2'01.689	3'15.382P	233,9	14:20'34.160
6	31.889	15.503	30.832	34.483	1'52.707P	233,9	14:22'26.867
7	26.924	15.252	30.525	33.910	1'46.611	232,9	14:24'13.478
8	<b>26.811</b>	15.150	<b>29.993</b>	<b>33.694</b>	<b>1'45.648</b>	237,9	14:25'59.126

#### 19° 83 L. EPIS (1'46.185)

Lap	Seg.1	Seg.2	Seg.3	Seg.4	Lap Time	km/h	Local Time
14:10'21.384							
1	30.465	15.412	30.945	34.629	1'51.451P	234,9	14:12'12.835
2	27.101	15.346	30.588	34.083	1'47.118	231,0	14:13'59.953
3	26.838	15.225	30.383	34.383	1'46.829	232,9	14:15'46.782
4	27.319	15.386	30.602	2'04.436	3'17.743P	232,5	14:19'04.525
5	31.759	15.442	31.074	35.198	1'53.473P	232,9	14:20'57.998
6	26.958	15.211	30.520	38.071	1'50.760	237,4	14:22'48.758
7	27.015	<b>15.062</b>	30.367	37.263	1'49.707	<b>239,0</b>	14:24'38.465
8	<b>26.722</b>	15.203	<b>30.246</b>	<b>34.014</b>	<b>1'46.185</b>	234,9	14:26'24.650

#### 15° 69 X. CARDELUS (1'45.712)

Lap	Seg.1	Seg.2	Seg.3	Seg.4	Lap Time	km/h	Local Time
14:10'17.553							
1	33.239	15.705	30.665	33.761	1'53.370P	236,4	14:12'10.923
2	26.885	15.208	<b>30.281</b>	33.605	1'45.979	241,0	14:13'56.902
3	<b>26.596</b>	15.056	30.483	<b>33.577</b>	<b>1'45.712</b>	<b>243,2</b>	14:15'42.614
4	26.808	15.030	30.303	33.607	1'45.748	<b>243,2</b>	14:17'28.362
5	26.917	<b>15.014</b>	30.411	33.589	1'45.931	242,6	14:19'14.293
6	26.965	15.023	30.361	33.764	1'46.113	242,6	14:21'00.406
7	27.016	15.056	30.480	33.993	1'46.545	<b>243,2</b>	14:22'46.951
8	26.806	15.036	30.586	33.808	1'46.236	241,6	14:24'33.187
9	26.864	15.279	30.735	36.714	1'49.592	233,4	14:26'22.779

#### 20° 97 M. SCHEIB (1'46.698)

Lap	Seg.1	Seg.2	Seg.3	Seg.4	Lap Time	km/h	Local Time
14:10'05.848							
1	33.501	15.445	32.122	35.450	1'56.518P	240,0	14:12'02.366
2	27.507	15.073	30.977	34.176	1'47.733	<b>240,5</b>	14:13'50.099
3	27.431	<b>15.017</b>	30.912	34.596	1'47.956	237,9	14:15'38.055
4	27.109	15.331	30.679	34.291	1'47.410	231,0	14:17'25.465
5	27.197	15.208	30.911	33.981	1'47.297	227,7	14:19'12.762
6	27.635	15.896	31.249	34.489	1'49.269	205,7	14:21'02.031
7	27.116	15.110	30.602	34.014	1'46.842	234,9	14:22'48.873
8	27.159	15.030	30.645	<b>33.864</b>	<b>1'46.698</b>	236,4	14:24'35.571
9	<b>27.068</b>	15.178	<b>30.398</b>	34.271	1'46.915	235,9	14:26'22.486

#### 16° 56 P. SEBESTYÉN (1'46.026)

Lap	Seg.1	Seg.2	Seg.3	Seg.4	Lap Time	km/h	Local Time
14:10'03.142							
1	33.510	16.825	32.667	36.486	1'59.488P	195,6	14:12'02.630
2	27.402	15.114	30.236	<b>33.945</b>	1'46.697	<b>241,0</b>	14:13'49.327
3	<b>26.945</b>	<b>14.983</b>	<b>30.103</b>	33.995	<b>1'46.026</b>	237,9	14:15'35.353
4	26.966	15.045	30.689	2'10.404	3'23.104P	235,9	14:18'58.457
5	35.128	15.200	30.265	34.038	1'54.631P	233,9	14:20'53.088
6	26.998	15.216	30.252	34.050	1'46.516	233,4	14:22'39.604
7	27.001	15.188	30.338	<b>33.945</b>	1'46.472	232,9	14:24'26.076
8	26.976	15.199	30.316	34.101	1'46.592	233,4	14:26'12.668

#### 21° 48 G. SCARCELLA (1'47.699)

Lap	Seg.1	Seg.2	Seg.3	Seg.4	Lap Time	km/h	Local Time
14:10'06.337							
1	32.579	15.648	32.001	35.240	1'55.468P	236,4	14:12'01.805
2	27.638	<b>15.157</b>	31.648	34.277	1'48.720	<b>236,9</b>	14:13'50.525
3	27.764	15.261	30.789	34.383	1'48.197	235,4	14:15'38.722
4	27.705	15.516	31.397	3'02.679	4'17.297P	232,9	14:19'56.019
5	32.391	15.474	31.077	34.488	1'53.430P	233,4	14:21'49.449
6	27.789	15.294	<b>30.612</b>	34.262	1'47.957	232,9	14:23'37.406
7	<b>27.483</b>	15.409	30.729	<b>34.078</b>	<b>1'47.699</b>	232,5	14:25'25.105

#### 17° 17 M. PONS (1'46.041)

Lap	Seg.1	Seg.2	Seg.3	Seg.4	Lap Time	km/h	Local Time
14:10'58.545							
1	31.632	15.415	30.921	33.733	1'51.701P	230,0	14:12'50.246

21/10/2017

P = Pits In/Out - C = Lap-Time Cancelled

These data/results cannot be reproduced, stored and/or transmitted in whole or in part by any manner of electronic, mechanical, photocopying, recording, broadcasting or otherwise now known or herein after developed without the previous express consent by the copyright owner, except for reproduction in daily press and regular printed publications on sale to the public within 60 days of the event related to those data/results and always provided that copyright symbol appears together as follows below.

© DORNA WSBK ORGANIZATION Srl 2017

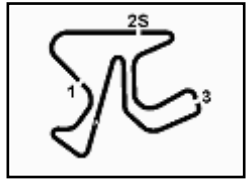
FICR PERUGIA TIMING



Official Tyre Supplier



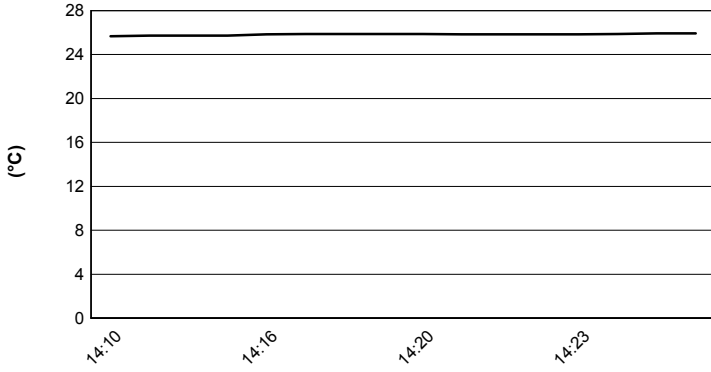
Official Timekeeper



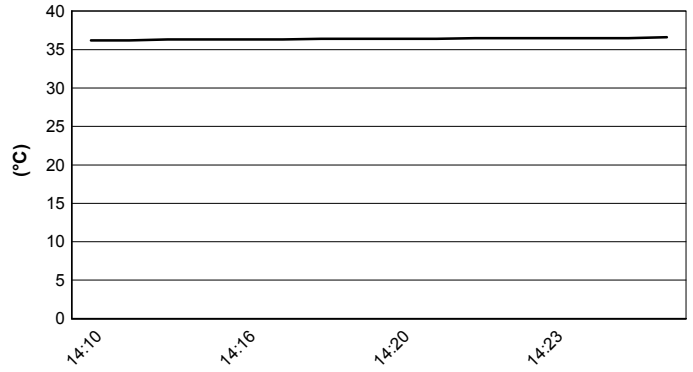
Jerez 4.423 m

**Spanish Round, 20-21-22 October 2017**  
**World Supersport - Weather Report Superpole 1**  
 Session started 14:10 - Session ended 14:27

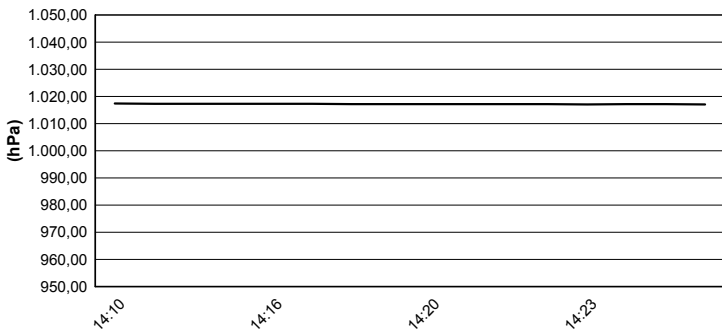
### Air Temperature



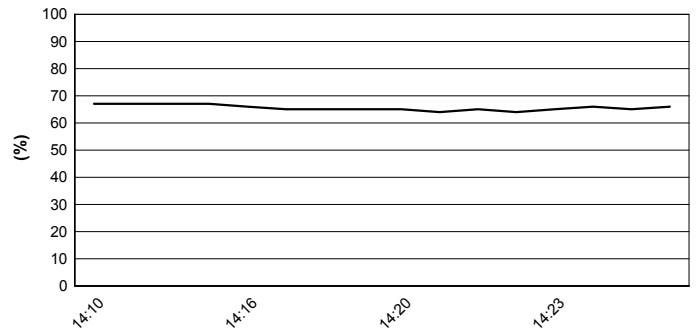
### Track Temperature



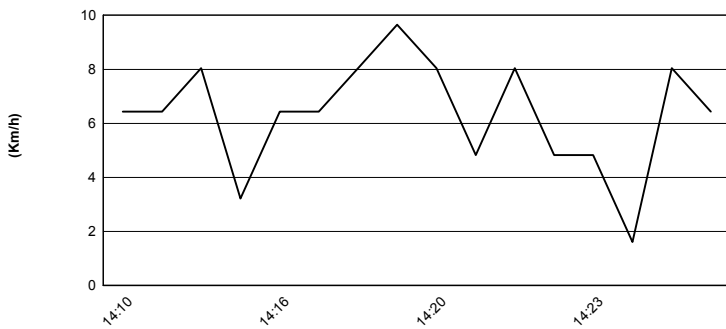
### Air Pressure



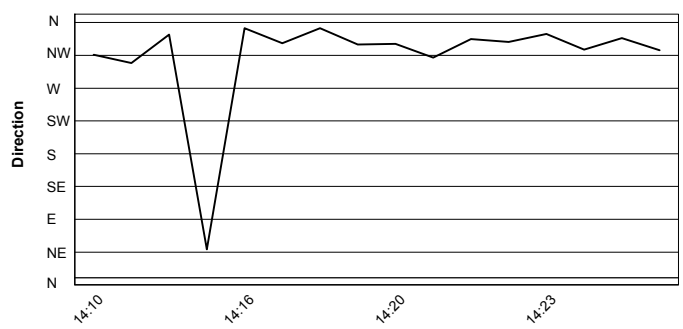
### Humidity



### Wind Speed



### Wind Direction



21/10/2017

These data/results cannot be reproduced, stored and/or transmitted in whole or in part by any manner of electronic, mechanical, photocopying, recording, broadcasting or otherwise now known or herein after developed without the previous express consent by the copyright owner, except for reproduction in daily press and regular printed publications on sale to the public within 60 days of the event related to those data/results and always provided that copyright symbol appears together as follows below.

© DORNA WSBK ORGANIZATION Srl 2017

