

## French Round, 29-30 September - 1 October 2017

### World Supersport - Results Warm Up

No.	Rider	Nat	Team	Bike	Class	Time	Gap	Rel.	Laps	Speed	
										Avg	Max
1	144 L. MAHIAS	FRA	GRT Yamaha Official WorldSSP Team	Yamaha YZF R6		<b>1'42.012</b>			7	155,664	<b>252,9</b>
2	64 F. CARICASULO	ITA	GRT Yamaha Official WorldSSP Team	Yamaha YZF R6		<b>1'42.475</b>	0.463	0.463	8	154,961	<b>255,9</b>
3	66 N. TUULI	FIN	Kallio Racing	Yamaha YZF R6		<b>1'42.539</b>	0.527	0.064	7	154,864	<b>260,2</b>
4	81 L. STAPLEFORD	GBR	Profile Racing	Triumph Daytona 675		<b>1'42.746</b>	0.734	0.207	8	154,552	<b>252,9</b>
5	99 P. JACOBSEN	USA	MV Agusta Reparto Corse	MV Agusta F3 675		<b>1'42.754</b>	0.742	0.008	6	154,540	<b>259,0</b>
6	61 A. ZACCONE	ITA	MV Agusta Reparto Corse	MV Agusta F3 675	ESS	<b>1'43.005</b>	0.993	0.251	8	154,163	<b>257,1</b>
7	111 K. SMITH	GBR	GEMAR Team Lorini	Honda CBR600RR		<b>1'43.019</b>	1.007	0.014	8	154,142	<b>254,1</b>
8	78 H. OKUBO	JPN	CIA Landlord Insurance Honda	Honda CBR600RR		<b>1'43.277</b>	1.265	0.258	8	153,757	<b>259,0</b>
9	32 S. MORAIS	RSA	Kallio Racing	Yamaha YZF R6		<b>1'43.362</b>	1.350	0.085	7	153,631	<b>255,3</b>
10	87 L. ZANETTI	ITA	Team Factory Vamag	MV Agusta F3 675		<b>1'43.571</b>	1.559	0.209	8	153,321	<b>260,2</b>
11	4 G. REA	GBR	Team Kawasaki Go Eleven	Kawasaki ZX-6R		<b>1'43.652</b>	1.640	0.081	8	153,201	<b>254,1</b>
12	71 C. BERGMAN	SWE	CIA Landlord Insurance Honda	Honda CBR600RR		<b>1'43.657</b>	1.645	0.005	8	153,194	<b>257,8</b>
13	16 J. CLUZEL	FRA	CIA Landlord Insurance Honda	Honda CBR600RR		<b>1'43.675</b>	1.663	0.018	7	153,167	<b>255,3</b>
14	26 K. WATANABE	JPN	Team Kawasaki Go Eleven	Kawasaki ZX-6R		<b>1'44.046</b>	2.034	0.371	8	152,621	<b>257,1</b>
15	11 C. GAMARINO	ITA	BARDAHL EVAN BROS. Honda Racing	Honda CBR600RR		<b>1'44.071</b>	2.059	0.025	8	152,584	<b>255,3</b>
16	65 M. CANDUCCI	ITA	3570 Puccetti Racing FMI	Kawasaki ZX-6R		<b>1'44.220</b>	2.208	0.149	8	152,366	<b>252,9</b>
17	77 K. RYDE	GBR	Kawasaki Puccetti Racing	Kawasaki ZX-6R		<b>1'44.281</b>	2.269	0.061	8	152,277	<b>255,3</b>
18	38 H. SOOMER	EST	WILSport Racedays	Honda CBR600RR	ESS	<b>1'44.335</b>	2.323	0.054	6	152,198	<b>254,7</b>
19	47 R. HARTOG	NED	Team Hartog - Jenik - Against Cancer	Kawasaki ZX-6R	ESS	<b>1'44.397</b>	2.385	0.062	8	152,108	<b>252,9</b>
20	44 R. ROLFO	ITA	GEMAR Team Lorini	Honda CBR600RR		<b>1'44.497</b>	2.485	0.100	7	151,962	<b>250,6</b>
21	56 P. SEBESTYÉN	HUN	SSP Hungary by Pedercini Racing	Kawasaki ZX-6R	ESS	<b>1'44.536</b>	2.524	0.039	8	151,906	<b>250,0</b>
22	74 J. VAN SIKKELERUS	NED	MVR Racing	Yamaha YZF R6	ESS	<b>1'44.620</b>	2.608	0.084	9	151,784	<b>250,0</b>
23	2 C. TANGRE	FRA	Yohann Moto Sport	Suzuki GSX-R600		<b>1'44.675</b>	2.663	0.055	8	151,704	<b>255,9</b>
24	35 S. HILL	GBR	Profile Racing	Triumph Daytona 675		<b>1'44.692</b>	2.680	0.017	8	151,679	<b>251,2</b>
25	63 Z. KHAIRUDDIN	MAS	Orelac Racing VerdNatura	Kawasaki ZX-6R		<b>1'45.330</b>	3.318	0.638	7	150,760	<b>253,5</b>
26	10 N. CALERO	ESP	Orelac Racing VerdNatura	Kawasaki ZX-6R		<b>1'45.395</b>	3.383	0.065	6	150,667	<b>249,4</b>
27	42 S. FROSSARD	SUI	Stef Racing Team	Yamaha YZF R6		<b>1'46.078</b>	4.066	0.683	8	149,697	<b>251,7</b>
28	83 L. EPIS	AUS	Response RE Racing	Kawasaki ZX-6R		<b>1'46.287</b>	4.275	0.209	8	149,403	<b>247,1</b>
29	25 A. BALDOLINI	ITA	Race Department ATK#25	Yamaha YZF R6					0		<b>234,8</b>

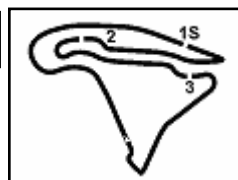
AIR	Humidity:	92%	Temp:	10°C
TRACK	Condition:	Dry	Temp:	14°C

Records	Pole (QP)	2014 J.Cluzel	1'40.550	157,930	Km/h
	Race (RC)	2009 C.Crutchlow	1'41.407	156,590	Km/h
	Circuit (QP)	2014 J.Cluzel	1'40.550	157,930	Km/h

Start 01/10/2017 09:00 End 09:16 The results are provisional until the end of the time limit for protests and appeals and the completion of the technical checks.

These data/results cannot be reproduced, stored and/or transmitted in whole or in part by any manner of electronic, mechanical, photocopying, recording, broadcasting or otherwise now known or herein after developed without the previous express consent by the copyright owner, except for reproduction in daily press and regular printed publications on sale to the public within 60 days of the event related to those data/results and always provided that copyright symbol appears together as follows below.

© DORNA WSBK ORGANIZATION Srl 2017



## French Round, 29-30 September - 1 October 2017

### World Supersport - Results Warm Up

#### Session Highlights

Local Time	No. Rider	Description
09.00.00		Start
09.01.21	10 N. CALERO	Lap Cancelled - Exceeded Track Limits - Turn 6
09.01.39	10 N. CALERO	Technical Problem - Turn 7
09.05.26	25 A. BALDOLINI	Crashed - Turn 7
09.05.28	66 N. TUULI	Lap Cancelled - Exceeded Track Limits - Turn 6
09.07.39	66 N. TUULI	Lap Cancelled - Exceeded Track Limits - Turn 11
09.09.45	10 N. CALERO	Lap Cancelled - Exceeded Track Limits - Turn 11
09.09.51	78 H. OKUBO	Lap Cancelled - Exceeded Track Limits - Turn 6
09.09.54	11 C. GAMARINO	Lap Cancelled - Exceeded Track Limits - Turn 6
09.12.44	99 P. JACOBSEN	Crashed - Turn 15
09.13.02	99 P. JACOBSEN	Re-joined
09.13.30	74 J. VAN SIKKELERUS	Lap Cancelled - Exceeded Track Limits - Turn 6
09.14.45	63 Z. KHAIRUDDIN	Lap Cancelled - Exceeded Track Limits - Turn 6
09.16.44		End Of Session
09.17.16	61 A. ZACCONE	Technical Problem - Turn 3

#### Fastest Laps Sequence

No.	Rider	Nat	Team	Bike	Local Time	Time	Gap	Avg
111	K. SMITH	GBR	GEMAR Team Lorini	Honda CBR600RR	09:03'44.928	<b>1'47.031</b>		148,364
77	K. RYDE	GBR	Kawasaki Puccetti Racing	Kawasaki ZX-6R	09:03'45.436	<b>1'46.794</b>	-0.237	148,694
64	F. CARICASULO	ITA	GRT Yamaha Official WorldSSP Team	Yamaha YZF R6	09:03'46.293	<b>1'45.812</b>	-0.982	150,074
99	P. JACOBSEN	USA	MV Agusta Reparto Corse	MV Agusta F3 675	09:04'00.551	<b>1'43.911</b>	-1.901	152,819
99	P. JACOBSEN	USA	MV Agusta Reparto Corse	MV Agusta F3 675	09:05'43.875	<b>1'43.324</b>	-0.587	153,687
144	L. MAHIAS	FRA	GRT Yamaha Official WorldSSP Team	Yamaha YZF R6	09:06'37.851	<b>1'43.213</b>	-0.111	153,853
64	F. CARICASULO	ITA	GRT Yamaha Official WorldSSP Team	Yamaha YZF R6	09:07'15.018	<b>1'43.160</b>	-0.053	153,932
144	L. MAHIAS	FRA	GRT Yamaha Official WorldSSP Team	Yamaha YZF R6	09:08'19.863	<b>1'42.012</b>	-1.148	155,664

Start 09:00 End 09:16 The results are provisional until the end of the time limit for protests and appeals and the completion of the technical checks.

These data/results cannot be reproduced, stored and/or transmitted in whole or in part by any manner of electronic, mechanical, photocopying, recording, broadcasting or otherwise now known or herein after developed without the previous express consent by the copyright owner, except for reproduction in daily press and regular printed publications on sale to the public within 60 days of the event related to those data/results and always provided that copyright symbol appears together as follows below.

© DORNA WSBK ORGANIZATION Srl 2017

## French Round, 29-30 September - 1 October 2017

### World Supersport - Best Sector & Speed Warm Up

Magny-Cours 4.411 m

BEST LAP		
1	144 L. MAHIAS	Yamaha YZF R6 1'42.012
2	64 F. CARICASULO	Yamaha YZF R6 1'42.475
3	66 N. TUULI	Yamaha YZF R6 1'42.539
4	81 L. STAPLEFORD	Triumph Davtona 675 1'42.746
5	99 P. JACOBSEN	MV Agusta F3 675 1'42.754
6	61 A. ZACCONE	MV Agusta F3 675 1'43.005
7	111 K. SMITH	Honda CBR600RR 1'43.019
8	78 H. OKUBO	Honda CBR600RR 1'43.277
9	32 S. MORAIS	Yamaha YZF R6 1'43.362
10	87 L. ZANETTI	MV Agusta F3 675 1'43.571
11	4 G. REA	Kawasaki ZX-6R 1'43.652
12	71 C. BERGMAN	Honda CBR600RR 1'43.657
13	16 J. CLUZEL	Honda CBR600RR 1'43.675
14	26 K. WATANABE	Kawasaki ZX-6R 1'44.046
15	11 C. GAMARINO	Honda CBR600RR 1'44.071
16	65 M. CANDUCCI	Kawasaki ZX-6R 1'44.220
17	77 K. RYDE	Kawasaki ZX-6R 1'44.281
18	38 H. SOOMER	Honda CBR600RR 1'44.335
19	47 R. HARTOG	Kawasaki ZX-6R 1'44.397
20	44 R. ROLFO	Honda CBR600RR 1'44.497
21	56 P. SEBESTYÉN	Kawasaki ZX-6R 1'44.536
22	74 J. VAN SIKKELERUS	Yamaha YZF R6 1'44.620
23	2 C. TANGRE	Suzuki GSX-R600 1'44.675
24	35 S. HILL	Triumph Davtona 675 1'44.692
25	63 Z. KHAIRUDDIN	Kawasaki ZX-6R 1'45.330
26	10 N. CALERO	Kawasaki ZX-6R 1'45.395
27	42 S. FROSSARD	Yamaha YZF R6 1'46.078
28	83 L. EPIS	Kawasaki ZX-6R 1'46.287
29	25 A. BALDOLINI	Yamaha YZF R6

SPEED		
1	66 N. TUULI	Yamaha YZF R6 260,2
2	87 L. ZANETTI	MV Agusta F3 675 260,2
3	78 H. OKUBO	Honda CBR600RR 259,0
4	99 P. JACOBSEN	MV Agusta F3 675 259,0
5	71 C. BERGMAN	Honda CBR600RR 257,8
6	61 A. ZACCONE	MV Agusta F3 675 257,1
7	26 K. WATANABE	Kawasaki ZX-6R 257,1
8	2 C. TANGRE	Suzuki GSX-R600 255,9
9	64 F. CARICASULO	Yamaha YZF R6 255,9
10	16 J. CLUZEL	Honda CBR600RR 255,3
11	32 S. MORAIS	Yamaha YZF R6 255,3
12	11 C. GAMARINO	Honda CBR600RR 255,3
13	77 K. RYDE	Kawasaki ZX-6R 255,3
14	38 H. SOOMER	Honda CBR600RR 254,7
15	111 K. SMITH	Honda CBR600RR 254,1
16	4 G. REA	Kawasaki ZX-6R 254,1
17	63 Z. KHAIRUDDIN	Kawasaki ZX-6R 253,5
18	144 L. MAHIAS	Yamaha YZF R6 252,9
19	47 R. HARTOG	Kawasaki ZX-6R 252,9
20	65 M. CANDUCCI	Kawasaki ZX-6R 252,9
21	81 L. STAPLEFORD	Triumph Daytona 675 252,9
22	42 S. FROSSARD	Yamaha YZF R6 251,7
23	35 S. HILL	Triumph Daytona 675 251,2
24	44 R. ROLFO	Honda CBR600RR 250,6
25	56 P. SEBESTYÉN	Kawasaki ZX-6R 250,0
26	74 J. VAN SIKKELERUS	Yamaha YZF R6 250,0
27	10 N. CALERO	Kawasaki ZX-6R 249,4
28	83 L. EPIS	Kawasaki ZX-6R 247,1
29	25 A. BALDOLINI	Yamaha YZF R6 234,8

SEG. 1			SEG. 2			SEG. 3			SEG. 4		
1	66 N. TUULI	30.847	1	144 L. MAHIAS	22.351	1	64 F. CARICASULO	22.759	1	144 L. MAHIAS	25.638
2	64 F. CARICASULO	31.026	2	111 K. SMITH	22.360	2	144 L. MAHIAS	22.825	2	66 N. TUULI	25.750
3	99 P. JACOBSEN	31.067	3	99 P. JACOBSEN	22.383	3	99 P. JACOBSEN	22.964	3	64 F. CARICASULO	25.814
4	144 L. MAHIAS	31.083	4	64 F. CARICASULO	22.412	4	61 A. ZACCONE	23.057	4	81 L. STAPLEFORD	25.936
5	81 L. STAPLEFORD	31.111	5	81 L. STAPLEFORD	22.428	5	66 N. TUULI	23.082	5	99 P. JACOBSEN	26.007
6	32 S. MORAIS	31.167	6	78 H. OKUBO	22.438	6	81 L. STAPLEFORD	23.103	6	26 K. WATANABE	26.052
7	71 C. BERGMAN	31.219	7	66 N. TUULI	22.455	7	111 K. SMITH	23.136	7	111 K. SMITH	26.079
8	111 K. SMITH	31.289	8	61 A. ZACCONE	22.513	8	11 C. GAMARINO	23.156	8	87 L. ZANETTI	26.080
9	87 L. ZANETTI	31.322	9	87 L. ZANETTI	22.554	9	78 H. OKUBO	23.163	9	78 H. OKUBO	26.091
10	65 M. CANDUCCI	31.327	10	32 S. MORAIS	22.578	10	32 S. MORAIS	23.219	10	61 A. ZACCONE	26.101
11	61 A. ZACCONE	31.334	11	4 G. REA	22.598	11	71 C. BERGMAN	23.231	11	44 R. ROLFO	26.136
12	4 G. REA	31.395	12	16 J. CLUZEL	22.622	12	38 H. SOOMER	23.276	12	47 R. HARTOG	26.161
13	38 H. SOOMER	31.425	13	77 K. RYDE	22.662	13	16 J. CLUZEL	23.280	13	71 C. BERGMAN	26.176
14	78 H. OKUBO	31.435	14	26 K. WATANABE	22.751	14	87 L. ZANETTI	23.295	14	16 J. CLUZEL	26.177
15	35 S. HILL	31.497	15	71 C. BERGMAN	22.792	15	4 G. REA	23.330	15	4 G. REA	26.198
16	16 J. CLUZEL	31.511	16	56 P. SEBESTYÉN	22.820	16	56 P. SEBESTYÉN	23.361	16	38 H. SOOMER	26.223
17	2 C. TANGRE	31.532	17	11 C. GAMARINO	22.840	17	77 K. RYDE	23.418	17	32 S. MORAIS	26.250
18	11 C. GAMARINO	31.533	18	65 M. CANDUCCI	22.883	18	65 M. CANDUCCI	23.421	18	65 M. CANDUCCI	26.339
19	26 K. WATANABE	31.554	19	44 R. ROLFO	22.884	19	74 J. VAN SIKKELER	23.438	19	77 K. RYDE	26.353
20	47 R. HARTOG	31.582	20	2 C. TANGRE	22.887	20	35 S. HILL	23.457	20	10 N. CALERO	26.424
21	74 J. VAN SIKKELER	31.589	21	63 Z. KHAIRUDDIN	22.929	21	26 K. WATANABE	23.489	21	74 J. VAN SIKKELER	26.446
22	77 K. RYDE	31.591	22	10 N. CALERO	22.936	22	63 Z. KHAIRUDDIN	23.538	22	11 C. GAMARINO	26.449
23	56 P. SEBESTYÉN	31.735	23	38 H. SOOMER	22.950	23	47 R. HARTOG	23.541	23	2 C. TANGRE	26.492
24	44 R. ROLFO	31.822	24	35 S. HILL	22.965	24	44 R. ROLFO	23.576	24	35 S. HILL	26.494
25	42 S. FROSSARD	31.860	25	74 J. VAN SIKKELER	22.966	25	2 C. TANGRE	23.580	25	56 P. SEBESTYÉN	26.555
26	10 N. CALERO	31.871	26	47 R. HARTOG	23.084	26	42 S. FROSSARD	23.715	26	63 Z. KHAIRUDDIN	26.590
27	63 Z. KHAIRUDDIN	31.976	27	83 L. EPIS	23.170	27	83 L. EPIS	23.887	27	83 L. EPIS	26.840
28	83 L. EPIS	32.252	28	42 S. FROSSARD	23.261	28	10 N. CALERO	23.897	28	42 S. FROSSARD	27.112
			29	25 A. BALDOLINI	25.415	29	25 A. BALDOLINI	25.366			

01/10/2017

These data/results cannot be reproduced, stored and/or transmitted in whole or in part by any manner of electronic, mechanical, photocopying, recording, broadcasting or otherwise now known or herein after developed without the previous express consent by the copyright owner, except for reproduction in daily press and regular printed publications on sale to the public within 60 days of the event related to those data/results and always provided that copyright symbol appears together as follows below.

© DORNA WSBK ORGANIZATION Srl 2017

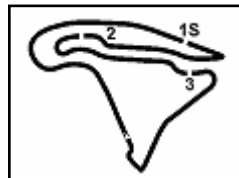
FICR PERUGIA TIMING



Official Tyre Supplier



Official Timekeeper



Magny-Cours 4.411 m

## French Round, 29-30 September - 1 October 2017

### World Supersport - Ideal Times Warm Up

Rider No.	Nat	Bike	Seg. 1 Diff. 1	Seg. 2 Diff. 2	Seg. 3 Diff. 3	Seg. 4 Diff. 4	Ideal Time				
							Best Lap	Pos.	Diff.		
1	144	L. MAHIAS	FRA	Yamaha YZF R6	31.083	<b>22.351</b> 0.034	22.825 0.081	<b>25.638</b>	<b>1'41.897</b> 1'42.012	2	0.115
2	64	F. CARICASULO	ITA	Yamaha YZF R6	31.026 0.273	22.412 0.070	<b>22.759</b> 0.121	25.814	<b>1'42.011</b> 1'42.475	3	0.464
3	66	N. TUULI	FIN	Yamaha YZF R6	<b>30.847</b>	22.455 0.263	23.082 0.142	25.750	<b>1'42.134</b> 1'42.539	4	0.405
4	99	P. JACOBSEN	USA	MV Agusta F3 675	31.067 0.137	22.383 0.071	22.964 0.125	26.007	<b>1'42.421</b> 1'42.754	6	0.333
5	81	L. STAPLEFORD	GBR	Triumph Daytona 675	31.111 0.168	22.428	23.103	25.936	<b>1'42.578</b> 1'42.746	5	0.168
6	111	K. SMITH	GBR	Honda CBR600RR	31.289 0.006	22.360 0.113	23.136	26.079 0.036	<b>1'42.864</b> 1'43.019	8	0.155
7	61	A. ZACCONE	ITA	MV Agusta F3 675	31.334	22.513	23.057	26.101	<b>1'43.005</b> 1'43.005	7	
8	78	H. OKUBO	JPN	Honda CBR600RR	31.435 0.143	22.438	23.163 0.007	26.091	<b>1'43.127</b> 1'43.277	9	0.150
9	32	S. MORAIS	RSA	Yamaha YZF R6	31.167 0.148	22.578	23.219	26.250	<b>1'43.214</b> 1'43.362	10	0.148
10	87	L. ZANETTI	ITA	MV Agusta F3 675	31.322 0.138	22.554 0.074	23.295	26.080 0.108	<b>1'43.251</b> 1'43.571	11	0.320
11	71	C. BERGMAN	SWE	Honda CBR600RR	31.219 0.144	22.792 0.010	23.231 0.009	26.176 0.076	<b>1'43.418</b> 1'43.657	13	0.239
12	4	G. REA	GBR	Kawasaki ZX-6R	31.395 0.069	22.598	23.330 0.017	26.198 0.045	<b>1'43.521</b> 1'43.652	12	0.131
13	16	J. CLUZEL	FRA	Honda CBR600RR	31.511 0.039	22.622	23.280	26.177 0.046	<b>1'43.590</b> 1'43.675	14	0.085
14	26	K. WATANABE	JPN	Kawasaki ZX-6R	31.554 0.001	22.751 0.144	23.489 0.055	26.052	<b>1'43.846</b> 1'44.046	15	0.200
15	38	H. SOOMER	EST	Honda CBR600RR	31.425 0.163	22.950	23.276	26.223 0.298	<b>1'43.874</b> 1'44.335	19	0.461
16	65	M. CANDUCCI	ITA	Kawasaki ZX-6R	31.327 0.004	22.883 0.128	23.421	26.339 0.118	<b>1'43.970</b> 1'44.220	17	0.250
17	11	C. GAMARINO	ITA	Honda CBR600RR	31.533	22.840	23.156 0.093	26.449	<b>1'43.978</b> 1'44.071	16	0.093
18	77	K. RYDE	GBR	Kawasaki ZX-6R	31.591	22.662 0.172	23.418 0.077	26.353 0.008	<b>1'44.024</b> 1'44.281	18	0.257
19	47	R. HARTOG	NED	Kawasaki ZX-6R	31.582	23.084	23.541 0.029	26.161	<b>1'44.368</b> 1'44.397	20	0.029
20	35	S. HILL	GBR	Triumph Daytona 675	31.497 0.110	22.965	23.457 0.051	26.494 0.118	<b>1'44.413</b> 1'44.692	25	0.279
21	44	R. ROLFO	ITA	Honda CBR600RR	31.822 0.079	22.884	23.576	26.136	<b>1'44.418</b> 1'44.497	21	0.079
22	74	J. VAN SIKKELERUS	NED	Yamaha YZF R6	31.589 0.181	22.966	23.438	26.446	<b>1'44.439</b> 1'44.620	23	0.181
23	56	P. SEBESTYÉN	HUN	Kawasaki ZX-6R	31.735 0.037	22.820	23.361	26.555 0.028	<b>1'44.471</b> 1'44.536	22	0.065
24	2	C. TANGRE	FRA	Suzuki GSX-R600	31.532 0.160	22.887	23.580	26.492 0.024	<b>1'44.491</b> 1'44.675	24	0.184
25	63	Z. KHAIRUDDIN	MAS	Kawasaki ZX-6R	31.976 0.016	22.929	23.538 0.281	26.590	<b>1'45.033</b> 1'45.330	26	0.297
26	10	N. CALERO	ESP	Kawasaki ZX-6R	31.871 0.078	22.936	23.897	26.424 0.189	<b>1'45.128</b> 1'45.395	27	0.267
27	42	S. FROSSARD	SUI	Yamaha YZF R6	31.860 0.058	23.261	23.715	27.112 0.072	<b>1'45.948</b> 1'46.078	28	0.130
28	83	L. EPIS	AUS	Kawasaki ZX-6R	32.252 0.138	23.170	23.887	26.840	<b>1'46.149</b> 1'46.287	29	0.138
<b>Overall Ideal Time</b>					30.847	22.351	22.759	25.638	<b>1'41.595</b>		

01/10/2017

These data/results cannot be reproduced, stored and/or transmitted in whole or in part by any manner of electronic, mechanical, photocopying, recording, broadcasting or otherwise now known or herein after developed without the previous express consent by the copyright owner, except for reproduction in daily press and regular printed publications on sale to the public within 60 days of the event related to those data/results and always provided that copyright symbol appears together as follows below.

© DORNA WSBK ORGANIZATION Srl 2017

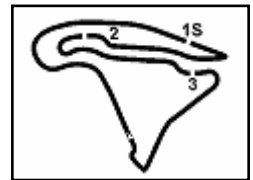
FICR PERUGIA TIMING



Official Tyre Supplier



Official Timekeeper



## French Round, 29-30 September - 1 October 2017

### World Supersport - Chronological Analysis Warm Up

1° 144 L. MAHIAS (1'42.012)							
Lap	Seg.1	Seg.2	Seg.3	Seg.4	Lap Time	km/h	Local Time
1		24.184	24.131	27.125		236,3	9:03'10.555
2	31.406	23.150	23.550	25.977	1'44.083	240,5	9:04'54.638
3	31.326	22.696	23.085	26.106	1'43.213	251,2	9:06'37.851
4	<b>31.083</b>	22.385	22.906	<b>25.638</b>	<b>1'42.012</b>	<b>252,9</b>	9:08'19.863
5	31.344	22.356	<b>22.825</b>	25.859	1'42.384	250,6	9:10'02.247
6	31.449	22.416	22.963	25.894	1'42.722	249,4	9:11'44.969
7	31.386	22.592	22.893	25.963	1'42.834	249,4	9:13'27.803
8	31.265	<b>22.351</b>	<b>22.825</b>	25.734	1'42.175	251,2	9:15'09.978

2° 64 F. CARICASULO (1'42.475)							
Lap	Seg.1	Seg.2	Seg.3	Seg.4	Lap Time	km/h	Local Time
1		24.644	24.574	27.242		225,0	9:02'00.481
2	31.633	23.336	24.217	26.626	1'45.812	251,2	9:03'46.293
3	31.101	23.523	24.347	26.594	1'45.565	235,3	9:05'31.858
4	31.186	22.468	23.314	26.192	1'43.160	249,4	9:07'15.018
5	31.329	22.644	22.943	25.837	1'42.753	252,9	9:08'57.771
6	31.299	22.482	22.880	<b>25.814</b>	<b>1'42.475</b>	252,9	9:10'40.246
7	31.118	22.545	<b>22.759</b>	26.239	1'42.661	250,6	9:12'22.907
8	31.691	27.871	22.983	25.915	1'48.460	254,1	9:14'11.367
9	<b>31.026</b>	<b>22.412</b>	23.098	26.003	1'42.539	<b>255,9</b>	9:15'53.906

3° 66 N. TUULI (1'42.539)							
Lap	Seg.1	Seg.2	Seg.3	Seg.4	Lap Time	km/h	Local Time
1		25.620	25.054	26.800		230,3	9:02'52.665
2	31.564	23.086	23.368	26.202	1'44.220	253,5	9:04'36.885
3	31.223	24.883	25.131	26.188	1'47.425C	255,3	9:06'24.310
4	31.146	22.765	23.704	30.753	1'48.368CP	255,3	9:08'12.678
5	1'20.063	23.005	23.575	25.994	2'32.637P	<b>260,2</b>	9:10'45.315
6	<b>30.847</b>	22.718	23.224	<b>25.750</b>	<b>1'42.539</b>	<b>260,2</b>	9:12'27.854
7	31.171	22.544	<b>23.082</b>	26.088	1'42.885	254,1	9:14'10.739
8	31.070	<b>22.455</b>	23.084	26.005	1'42.614	255,9	9:15'53.353

4° 81 L. STAPLEFORD (1'42.746)							
Lap	Seg.1	Seg.2	Seg.3	Seg.4	Lap Time	km/h	Local Time
1		24.265	24.476	27.817		236,3	9:02'42.564
2	32.410	23.198	23.943	26.614	1'46.165	251,2	9:04'28.729
3	31.895	23.869	23.909	26.528	1'46.201	250,0	9:06'14.930
4	31.743	22.851	23.377	26.504	1'44.475	247,7	9:07'59.405
5	31.513	22.701	23.250	26.206	1'43.670	250,0	9:09'43.075
6	31.260	22.625	23.336	26.106	1'43.327	251,2	9:11'26.402
7	31.351	22.486	23.133	26.198	1'43.168	251,2	9:13'09.570
8	31.279	<b>22.428</b>	<b>23.103</b>	<b>25.936</b>	<b>1'42.746</b>	251,7	9:14'52.316
9	<b>31.111</b>	22.613	23.235	26.908	1'43.867	<b>252,9</b>	9:16'36.183

5° 99 P. JACOBSEN (1'42.754)							
Lap	Seg.1	Seg.2	Seg.3	Seg.4	Lap Time	km/h	Local Time
1		25.273	25.016	26.618		224,1	9:02'16.640
2	31.540	22.862	23.366	26.143	1'43.911	257,1	9:04'00.551
3	31.343	22.719	23.158	26.104	1'43.324	257,1	9:05'43.875
4	31.672	23.030	23.176	26.220	1'44.098	255,9	9:07'27.973
5	31.204	22.454	23.089	<b>26.007</b>	<b>1'42.754</b>	257,1	9:09'10.727
6	32.805	22.813	24.331	26.334	1'46.283	248,8	9:10'57.010
7	<b>31.067</b>	<b>22.383</b>	<b>22.964</b>	1'03.060	2'19.474P	<b>259,0</b>	9:13'16.484

6° 61 A. ZACCONE (1'43.005)							
Lap	Seg.1	Seg.2	Seg.3	Seg.4	Lap Time	km/h	Local Time
1		26.273	25.371	27.483		204,2	9:02'17.717
2	31.512	23.202	23.452	26.484	1'44.650	<b>257,1</b>	9:04'02.367
3	31.605	22.979	23.977	26.532	1'45.093	250,6	9:05'47.460
4	31.989	23.483	23.819	26.780	1'46.071	245,5	9:07'33.531
5	31.528	22.853	23.348	26.131	1'43.860	252,3	9:09'17.391
6	31.498	22.740	23.322	26.230	1'43.790	250,0	9:11'01.181

7	31.651	22.810	23.176	26.697	1'44.334	256,5	9:12'45.515
8	31.534	22.558	23.222	28.475	1'45.789	249,4	9:14'31.304
9	<b>31.334</b>	<b>22.513</b>	<b>23.057</b>	<b>26.101</b>	<b>1'43.005</b>	251,2	9:16'14.309

7° 111 K. SMITH (1'43.019)							
Lap	Seg.1	Seg.2	Seg.3	Seg.4	Lap Time	km/h	Local Time
1		24.672	24.889	27.263		241,6	9:01'57.897
2	32.284	24.349	23.617	26.781	1'47.031	253,5	9:03'44.928
3	31.674	22.963	23.416	26.426	1'44.479	251,7	9:05'29.407
4	31.526	22.693	23.161	26.385	1'43.765	251,7	9:07'13.172
5	31.355	22.390	23.203	26.107	1'43.055	253,5	9:08'56.227
6	31.335	22.542	23.168	<b>26.079</b>	1'43.124	253,5	9:10'39.351
7	<b>31.289</b>	<b>22.360</b>	23.272	26.538	1'43.459	<b>254,1</b>	9:12'22.810
8	31.801	22.888	23.437	26.222	1'44.348	250,0	9:14'07.158
9	31.295	22.473	<b>23.136</b>	26.115	<b>1'43.019</b>	252,9	9:15'50.177

8° 78 H. OKUBO (1'43.277)							
Lap	Seg.1	Seg.2	Seg.3	Seg.4	Lap Time	km/h	Local Time
1		24.661	25.025	27.336		251,2	9:01'58.223
2	32.164	24.109	25.055	27.032	1'48.360	255,9	9:03'46.583
3	31.691	22.963	23.608	26.324	1'44.586	250,6	9:05'31.169
4	31.594	23.375	23.384	26.238	1'44.591	252,9	9:07'15.760
5	31.578	<b>22.438</b>	23.170	<b>26.091</b>	<b>1'43.277</b>	<b>259,0</b>	9:08'59.037
6	<b>31.435</b>	23.926	25.475	26.287	1'47.123C	<b>254,1</b>	9:10'46.160
7	31.568	22.486	<b>23.163</b>	26.271	1'43.488	254,7	9:12'29.648
8	31.547	22.444	23.232	26.308	1'43.531	255,9	9:14'13.179
9	31.829	22.838	23.681	26.416	1'44.764	255,9	9:15'57.943

9° 32 S. MORAIS (1'43.362)							
Lap	Seg.1	Seg.2	Seg.3	Seg.4	Lap Time	km/h	Local Time
1		27.111	27.246	28.931		220,0	9:03'07.445
2	32.817	24.415	25.901	27.173	1'50.306	247,7	9:04'57.751
3	31.575	23.749	23.721	26.627	1'45.672	254,1	9:06'43.423
4	31.482	23.122	23.416	26.668	1'44.688	<b>255,3</b>	9:08'28.111
5	31.814	22.940	23.450	26.548	1'44.752	248,3	9:10'12.863
6	31.232	22.659	23.369	26.325	1'43.585	254,7	9:11'56.448
7	<b>31.167</b>	22.629	23.314	26.587	1'43.697	254,7	9:13'40.145
8	31.315	<b>22.578</b>	<b>23.219</b>	<b>26.250</b>	<b>1'43.362</b>	254,1	9:15'23.507

10° 87 L. ZANETTI (1'43.571)							
Lap	Seg.1	Seg.2	Seg.3	Seg.4	Lap Time	km/h	Local Time
1		26.595	26.853	33.807		229,8	9:02'19.321
2	32.199	23.156	23.603	26.471	1'45.429	252,9	9:04'04.750
3	31.669	22.684	23.539	26.370	1'44.262	255,9	9:05'49.012
4	31.422	22.664	23.518	26.561	1'44.165	<b>260,2</b>	9:07'33.177
5	31.460	22.628	<b>23.295</b>	26.188	<b>1'43.571</b>	258,4	9:09'16.748
6	<b>31.322</b>	22.894	23.513	26.598	1'44.327	258,4	9:11'01.075
7	31.627	22.693	23.337	<b>26.080</b>	1'43.737	257,8	9:12'44.812
8	31.357	22.838	23.534	27.350	1'45.079	<b>260,2</b>	9:14'29.891
9	31.512	<b>22.554</b>	23.456	26.171	1'43.693	258,4	9:16'13.584

11° 4 G. REA (1'43.652)							
Lap	Seg.1	Seg.2	Seg.3	Seg.4	Lap Time	km/h	Local Time
1		25.143	24.833	27.118		229,3	9:02'17.550
2	31.640	22.923	<b>23.330</b>	26.530	1'44.423	<b>254,1</b>	9:04'01.973
3	31.750	22.780	23.463	28.302	1'46.295	252,9	9:05'48.268
4	31.455	23.089	23.354	26.489	1'44.387	251,7	9:07'32.655
5	31.502	22.646	23.427	26.208	1'43.783	252,9	9:09'16.438
6	<b>31.395</b>	22.993	23.498	<b>26.198</b>	1'44.084	252,9	9:11'00.522
7	31.464	<b>22.598</b>	23.347	26.243	<b>1'43.652</b>	252,9	9:12'44.174
8	31.565	22.892	23.722	26.551	1'44.730	252,3	9:14'28.904
9	31.742	25.345	23.741	28.666	1'49.494	248,8	9:16'18.398

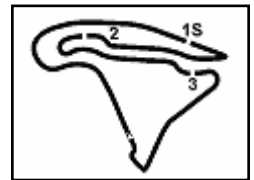
12° 71 C. BERGMAN (1'43.657)							
Lap	Seg.1	Seg.2	Seg.3	Seg.4	Lap Time	km/h	Local Time

01/10/2017 P = Pits In/Out - C = Lap-Time Cancelled

These data/results cannot be reproduced, stored and/or transmitted in whole or in part by any manner of electronic, mechanical, photocopying, recording, broadcasting or otherwise now known or herein after developed without the previous express consent by the copyright owner, except for reproduction in daily press and regular printed publications on sale to the public within 60 days of the event related to those data/results and always provided that copyright symbol appears together as follows below.

© DORNA WSBK ORGANIZATION Srl 2017





Magny-Cours 4.411 m

## French Round, 29-30 September - 1 October 2017

### World Supersport - Chronological Analysis Warm Up

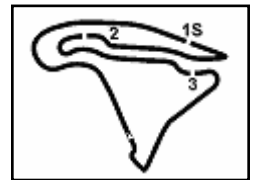
2 / 3

1		24.687	24.464	27.497		238,9	9:02'01.269	6	<b>31.591</b>	22.834	23.495	26.361	<b>1'44.281</b>	<b>255,3</b>	9:10'44.132
2	32.088	23.574	23.881	27.369	1'46.912	257,1	9:03'48.181	7	31.759	22.787	23.607	26.449	1'44.602	252,3	9:12'28.734
3	31.738	23.290	23.692	27.313	1'46.033	<b>257,8</b>	9:05'34.214	8	31.595	22.688	23.516	26.544	1'44.343	254,1	9:14'13.077
4	31.504	25.179	24.827	27.219	1'48.729	254,1	9:07'22.943	9	31.945	26.369	28.164	27.083	1'53.561	250,0	9:16'06.638
5	31.568	23.181	23.434	26.245	1'44.428	254,7	9:09'07.371	<b>18° 38 H. SOOMER (1'44.335)</b>							
6	31.510	23.024	<b>23.231</b>	<b>26.176</b>	1'43.941	252,9	9:10'51.312	<b>Lap</b>	<b>Seg.1</b>	<b>Seg.2</b>	<b>Seg.3</b>	<b>Seg.4</b>	<b>Lap Time</b>	<b>km/h</b>	<b>Local Time</b>
7	<b>31.219</b>	22.971	23.756	28.364	1'46.310	256,5	9:12'37.622	1		24.431	24.526	27.261	243,8	9:01'59.150	
8	31.363	22.802	23.240	26.252	<b>1'43.657</b>	255,9	9:14'21.279	2	32.052	24.655	24.216	27.064	1'47.987	<b>254,7</b>	9:03'47.137
9	31.382	<b>22.792</b>	23.246	26.464	1'43.884	252,9	9:16'05.163	3	<b>31.425</b>	23.236	23.742	28.385	1'46.788P	246,6	9:05'33.925
<b>13° 16 J. CLUZEL (1'43.675)</b>								4	3'40.787	22.955	23.564	26.379	4'53.685P	251,2	9:10'27.610
<b>Lap</b>	<b>Seg.1</b>	<b>Seg.2</b>	<b>Seg.3</b>	<b>Seg.4</b>	<b>Lap Time</b>	<b>km/h</b>	<b>Local Time</b>	5	31.548	24.337	23.440	26.463	1'45.788	252,9	9:12'13.398
1		27.232	26.050	31.222		203,8	9:03'09.016	6	31.617	23.055	23.551	<b>26.223</b>	1'44.446	252,3	9:13'57.844
2	32.740	24.282	24.065	26.642	1'47.729	225,5	9:04'56.745	7	31.588	<b>22.950</b>	<b>23.276</b>	26.521	<b>1'44.335</b>	253,5	9:15'42.179
3	31.804	23.358	23.567	26.277	1'45.006	252,9	9:06'41.751	<b>19° 47 R. HARTOG (1'44.397)</b>							
4	31.560	22.895	23.374	26.287	1'44.116	<b>255,3</b>	9:08'25.867	<b>Lap</b>	<b>Seg.1</b>	<b>Seg.2</b>	<b>Seg.3</b>	<b>Seg.4</b>	<b>Lap Time</b>	<b>km/h</b>	<b>Local Time</b>
5	32.461	23.412	23.712	27.979	1'47.564	251,2	9:10'13.431	1		25.566	25.375	27.665	230,3	9:01'56.983	
6	31.573	22.730	23.595	26.343	1'44.241	254,7	9:11'57.672	2	32.562	24.041	24.301	27.367	1'48.271	245,5	9:03'45.254
7	31.550	<b>22.622</b>	<b>23.280</b>	26.223	<b>1'43.675</b>	254,1	9:13'41.347	3	31.931	23.637	24.365	26.593	1'46.526	250,0	9:05'31.780
8	<b>31.511</b>	22.633	23.360	<b>26.177</b>	1'43.681	254,7	9:15'25.028	4	31.969	23.478	23.895	26.760	1'46.102	249,4	9:07'17.882
<b>14° 26 K. WATANABE (1'44.046)</b>								5	31.683	23.216	23.575	26.402	1'44.876	250,0	9:09'02.758
<b>Lap</b>	<b>Seg.1</b>	<b>Seg.2</b>	<b>Seg.3</b>	<b>Seg.4</b>	<b>Lap Time</b>	<b>km/h</b>	<b>Local Time</b>	6	31.648	23.345	23.789	27.506	1'46.288	<b>252,9</b>	9:10'49.046
1		24.719	25.533	27.568		243,2	9:01'58.859	7	31.771	23.434	23.720	26.771	1'45.696	249,4	9:12'34.742
2	32.389	23.635	25.002	26.864	1'47.890	250,6	9:03'46.749	8	<b>31.582</b>	<b>23.084</b>	23.570	<b>26.161</b>	<b>1'44.397</b>	250,0	9:14'19.139
3	31.738	23.166	24.105	26.428	1'45.437	254,1	9:05'32.186	9	31.616	23.322	<b>23.541</b>	26.431	1'44.910	249,4	9:16'04.049
4	31.811	22.945	<b>23.489</b>	26.147	1'44.392	<b>257,1</b>	9:07'16.578	<b>20° 44 R. ROLFO (1'44.497)</b>							
5	31.555	22.895	23.544	<b>26.052</b>	<b>1'44.046</b>	254,1	9:09'00.624	<b>Lap</b>	<b>Seg.1</b>	<b>Seg.2</b>	<b>Seg.3</b>	<b>Seg.4</b>	<b>Lap Time</b>	<b>km/h</b>	<b>Local Time</b>
6	31.573	<b>22.751</b>	23.544	26.262	1'44.130	252,9	9:10'44.754	1		26.256	26.031	27.613	206,5	9:02'09.763	
7	<b>31.554</b>	23.120	23.645	27.067	1'45.386	256,5	9:12'30.140	2	32.476	23.640	24.414	27.004	1'47.534	<b>250,6</b>	9:03'57.297
8	31.814	23.125	23.708	26.763	1'45.410	252,9	9:14'15.550	3	32.028	23.534	24.194	26.567	1'46.323	240,5	9:05'43.620
9	31.788	22.858	23.840	35.349	1'53.835	251,2	9:16'09.385	4	32.055	23.275	23.639	29.824	1'48.793P	248,8	9:07'32.413
<b>15° 11 C. GAMARINO (1'44.071)</b>								5	1'36.778	24.460	26.286	28.332	2'55.856P	238,9	9:10'28.269
<b>Lap</b>	<b>Seg.1</b>	<b>Seg.2</b>	<b>Seg.3</b>	<b>Seg.4</b>	<b>Lap Time</b>	<b>km/h</b>	<b>Local Time</b>	6	31.852	23.115	23.610	26.266	1'44.843	250,0	9:12'13.112
1		25.086	24.408	27.482		232,3	9:02'01.483	7	31.901	<b>22.884</b>	<b>23.576</b>	<b>26.136</b>	<b>1'44.497</b>	248,8	9:13'57.609
2	31.909	23.674	23.954	27.280	1'46.817	253,5	9:03'48.300	8	<b>31.822</b>	23.277	23.649	26.355	1'45.103	<b>250,6</b>	9:15'42.712
3	31.727	23.315	23.638	26.893	1'45.573	240,5	9:05'33.873	<b>21° 56 P. SEBESTYÉN (1'44.536)</b>							
4	31.548	22.934	23.232	26.451	1'44.165	252,3	9:07'18.038	<b>Lap</b>	<b>Seg.1</b>	<b>Seg.2</b>	<b>Seg.3</b>	<b>Seg.4</b>	<b>Lap Time</b>	<b>km/h</b>	<b>Local Time</b>
5	<b>31.533</b>	<b>22.840</b>	23.249	<b>26.449</b>	<b>1'44.071</b>	<b>255,3</b>	9:09'02.109	1		25.449	25.646	27.943	233,8	9:01'57.727	
6	31.551	23.623	23.925	26.538	1'45.637C	254,7	9:10'47.746	2	32.999	24.277	24.979	27.484	1'49.739	<b>250,0</b>	9:03'47.466
7	31.612	23.123	23.300	26.604	1'44.639	250,6	9:12'32.385	3	32.093	23.319	23.725	26.887	1'46.024	248,3	9:05'33.490
8	31.712	23.139	<b>23.156</b>	26.483	1'44.490	251,2	9:14'16.875	4	32.039	23.339	23.762	26.749	1'45.889	248,3	9:07'19.379
9	31.609	22.865	23.350	26.752	1'44.576	252,3	9:16'01.451	5	32.032	23.004	23.493	26.835	1'45.364	248,8	9:09'04.743
<b>16° 65 M. CANDUCCI (1'44.220)</b>								6	31.951	23.059	23.517	26.725	1'45.252	248,3	9:10'49.995
<b>Lap</b>	<b>Seg.1</b>	<b>Seg.2</b>	<b>Seg.3</b>	<b>Seg.4</b>	<b>Lap Time</b>	<b>km/h</b>	<b>Local Time</b>	7	31.901	22.946	23.475	26.938	1'45.260	248,8	9:12'35.255
1		25.406	24.995	27.625		241,6	9:02'08.965	8	<b>31.735</b>	23.098	23.629	<b>26.555</b>	1'45.017	<b>250,0</b>	9:14'20.272
2	31.973	23.727	25.175	27.147	1'48.022	250,6	9:03'56.987	9	31.772	<b>22.820</b>	<b>23.361</b>	26.583	<b>1'44.536</b>	248,3	9:16'04.808
3	32.043	23.681	23.946	26.659	1'46.329	251,7	9:05'43.316	<b>22° 74 J. VAN SIKKELERUS (1'44.620)</b>							
4	32.529	23.415	23.622	27.002	1'46.568	241,1	9:07'29.884	<b>Lap</b>	<b>Seg.1</b>	<b>Seg.2</b>	<b>Seg.3</b>	<b>Seg.4</b>	<b>Lap Time</b>	<b>km/h</b>	<b>Local Time</b>
5	<b>31.327</b>	23.049	23.651	<b>26.339</b>	1'44.366	251,7	9:09'14.250	1							8:59'38.929
6	31.361	<b>22.883</b>	23.680	26.551	1'44.475	251,7	9:10'58.725	2	1'03.028	25.064	25.231	27.525	2'20.848P	227,4	9:01'59.777
7	31.430	23.229	23.428	26.441	1'44.528	249,4	9:12'43.253	3	32.471	23.932	24.252	27.473	1'48.128	244,3	9:03'47.905
8	31.837	23.171	23.804	26.659	1'45.471	251,2	9:14'28.724	4	31.946	24.014	23.751	26.898	1'46.609	244,9	9:05'34.514
9	31.331	23.011	<b>23.421</b>	26.457	<b>1'44.220</b>	<b>252,9</b>	9:16'12.944	5	31.720	23.613	23.913	26.664	1'45.910	247,7	9:07'20.424
<b>17° 77 K. RYDE (1'44.281)</b>								6	31.758	23.225	23.627	26.507	1'45.117	<b>250,0</b>	9:09'05.541
<b>Lap</b>	<b>Seg.1</b>	<b>Seg.2</b>	<b>Seg.3</b>	<b>Seg.4</b>	<b>Lap Time</b>	<b>km/h</b>	<b>Local Time</b>	7	31.656	23.099	23.439	26.764	1'44.958	249,4	9:10'50.499
1		25.452	25.865	27.539		237,4	9:01'58.642	8	<b>31.589</b>	23.177	23.446	26.838	1'45.050	243,2	9:12'35.549
2	32.147	23.770	24.211	26.666	1'46.794	254,7	9:03'45.436	9	32.232	26.745	25.242	26.597	1'50.816C	246,6	9:14'26.365
3	31.817	23.174	24.193	<b>26.353</b>	1'45.537	254,1	9:05'30.973	10	31.770	<b>22.966</b>	<b>23.438</b>	<b>26.446</b>	<b>1'44.620</b>	247,1	9:16'10.985
4	31.790	<b>22.662</b>	23.575	26.380	1'44.407	252,3	9:07'15.380	<b>23° 2 C. TANGRE (1'44.675)</b>							
5	31.929	22.757	<b>23.418</b>	26.367	1'44.471	254,7	9:08'59.851	<b>Lap</b>	<b>Seg.1</b>	<b>Seg.2</b>	<b>Seg.3</b>	<b>Seg.4</b>	<b>Lap Time</b>	<b>km/h</b>	<b>Local Time</b>

01/10/2017 P = Pits In/Out - C = Lap-Time Cancelled

These data/results cannot be reproduced, stored and/or transmitted in whole or in part by any manner of electronic, mechanical, photocopying, recording, broadcasting or otherwise now known or herein after developed without the previous express consent by the copyright owner, except for reproduction in daily press and regular printed publications on sale to the public within 60 days of the event related to those data/results and always provided that copyright symbol appears together as follows below.

© DORNA WSBK ORGANIZATION Srl 2017



Magny-Cours 4.411 m

3 / 3

## French Round, 29-30 September - 1 October 2017

### World Supersport - Chronological Analysis Warm Up

Lap	Seg.1	Seg.2	Seg.3	Seg.4	Lap Time	km/h	Local Time
1	57.639	26.780	25.297	28.984	2'18.700P	198,9	9:00'01.219
2	31.975	23.403	23.910	26.828	1'46.116	255,3	9:02'19.919
3	31.733	23.718	23.747	26.879	1'46.077	<b>255,9</b>	9:04'06.035
4	31.823	23.019	23.688	26.574	1'45.104	254,1	9:05'52.112
5	<b>31.532</b>	22.957	23.703	<b>26.492</b>	1'44.684	<b>255,9</b>	9:07'37.216
6	31.692	<b>22.887</b>	<b>23.580</b>	26.516	<b>1'44.675</b>	252,9	9:09'21.900
7	31.817	23.576	31.103	33.426	1'59.922P	251,2	9:11'06.575
8	1'27.723	23.531	23.892	26.813	2'41.959P	248,3	9:13'06.497
9							9:15'48.456

#### 24° 35 S. HILL (1'44.692)

Lap	Seg.1	Seg.2	Seg.3	Seg.4	Lap Time	km/h	Local Time
1		24.606	24.449	28.080		236,8	9:02'00.974
2	32.301	24.018	24.197	27.216	1'47.732	250,0	9:03'48.706
3	31.654	23.732	25.821	29.449	1'50.656	243,2	9:05'39.362
4	<b>31.497</b>	23.244	23.714	26.781	1'45.236	<b>251,2</b>	9:07'24.598
5	31.559	23.177	23.591	27.114	1'45.441	250,0	9:09'10.039
6	31.526	23.230	23.469	26.603	1'44.828	248,8	9:10'54.867
7	31.856	23.165	23.924	26.862	1'45.807	248,3	9:12'40.674
8	31.607	<b>22.965</b>	23.508	26.612	<b>1'44.692</b>	247,7	9:14'25.366
9	31.720	23.073	<b>23.457</b>	<b>26.494</b>	1'44.744	247,1	9:16'10.110

#### 25° 63 Z. KHAIRUDDIN (1'45.330)

Lap	Seg.1	Seg.2	Seg.3	Seg.4	Lap Time	km/h	Local Time
1		26.106	26.208	36.449		242,7	9:03'08.207
2	32.507	24.186	24.690	29.996	1'51.379	250,6	9:04'59.586
3	32.167	24.539	24.595	29.147	1'50.448	<b>253,5</b>	9:06'50.034
4	<b>31.976</b>	23.078	<b>23.538</b>	26.886	1'45.478	249,4	9:08'35.512
5	32.154	23.242	24.011	26.639	1'46.046	250,6	9:10'21.558
6	32.018	23.016	24.007	26.655	1'45.696	249,4	9:12'07.254
7	31.992	<b>22.929</b>	23.819	<b>26.590</b>	<b>1'45.330</b>	248,8	9:13'52.584
8	32.120	24.845	29.458	27.644	1'54.067C	248,8	9:15'46.651

#### 26° 10 N. CALERO (1'45.395)

Lap	Seg.1	Seg.2	Seg.3	Seg.4	Lap Time	km/h	Local Time
1		1'25.267	40.187	36.315		C 236,3	9:03'29.721
2	1'41.155	28.785	31.987	28.406	3'10.333P	247,1	9:06'40.054
3	32.958	23.485	24.427	26.867	1'47.737	248,3	9:08'27.791
4	32.205	23.594	24.545	30.892	1'51.236C	246,0	9:10'19.027
5	32.916	24.185	24.790	26.707	1'48.598	245,5	9:12'07.625
6	<b>31.871</b>	23.175	24.188	<b>26.424</b>	1'45.658	<b>249,4</b>	9:13'53.283
7	31.949	<b>22.936</b>	<b>23.897</b>	26.613	<b>1'45.395</b>	<b>249,4</b>	9:15'38.678

#### 27° 42 S. FROSSARD (1'46.078)

Lap	Seg.1	Seg.2	Seg.3	Seg.4	Lap Time	km/h	Local Time
1							9:00'59.936
2	51.922	24.953	25.195	28.522	2'10.592P	245,5	9:03'10.528
3	32.706	23.555	24.602	27.839	1'48.702	250,0	9:04'59.230
4	32.445	24.114	24.461	27.435	1'48.455	<b>251,7</b>	9:06'47.685
5	32.304	23.511	24.107	27.668	1'47.590	250,6	9:08'35.275
6	32.337	23.508	24.314	27.220	1'47.379	249,4	9:10'22.654
7	32.115	23.461	23.997	27.185	1'46.758	250,6	9:12'09.412
8	<b>31.860</b>	23.268	23.976	<b>27.112</b>	1'46.216	250,6	9:13'55.628
9	31.918	<b>23.261</b>	<b>23.715</b>	27.184	<b>1'46.078</b>	250,0	9:15'41.706

#### 28° 83 L. EPIS (1'46.287)

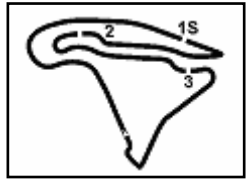
Lap	Seg.1	Seg.2	Seg.3	Seg.4	Lap Time	km/h	Local Time
1		25.464	25.549	27.916		219,1	9:02'11.194
2	33.415	24.544	24.456	27.726	1'50.141	245,5	9:04'01.335
3	32.710	23.417	24.226	27.199	1'47.552	236,8	9:05'48.887
4	32.299	23.654	24.187	26.841	1'46.981	<b>247,1</b>	9:07'35.868
5	32.267	23.400	24.126	27.249	1'47.042	246,0	9:09'22.910
6	32.280	23.331	24.045	27.237	1'46.893	246,0	9:11'09.803
7	<b>32.252</b>	23.202	24.157	26.974	1'46.585	244,9	9:12'56.388

01/10/2017 P = Pits In/Out - C = Lap-Time Cancelled

These data/results cannot be reproduced, stored and/or transmitted in whole or in part by any manner of electronic, mechanical, photocopying, recording, broadcasting or otherwise now known or herein after developed without the previous express consent by the copyright owner, except for reproduction in daily press and regular printed publications on sale to the public within 60 days of the event related to those data/results and always provided that copyright symbol appears together as follows below.

© DORNA WSBK ORGANIZATION Srl 2017





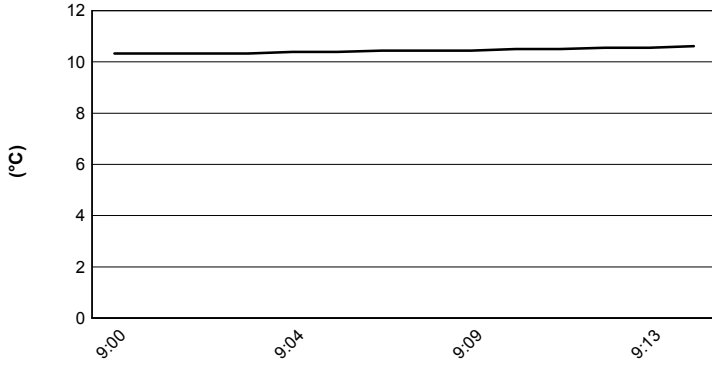
Magny-Cours 4.411 m

**French Round, 29-30 September - 1 October 2017**

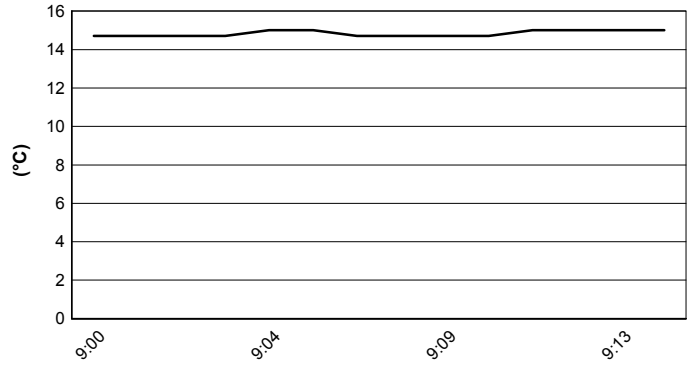
**World Supersport - Weather Report Warm Up**

Session started 09:00 - Session ended 9:16

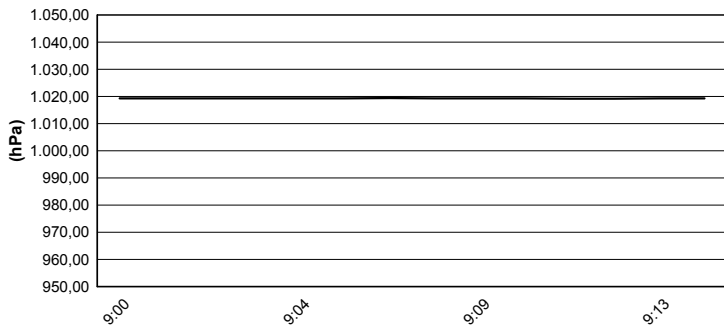
### Air Temperature



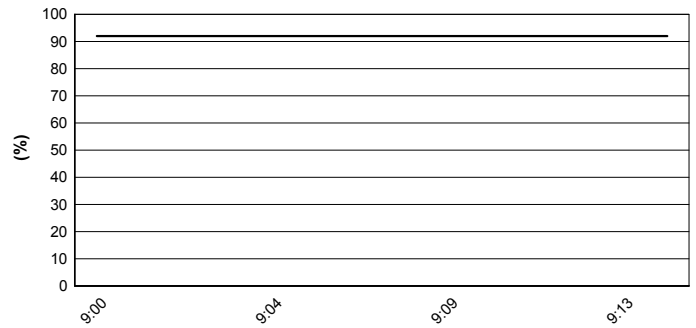
### Track Temperature



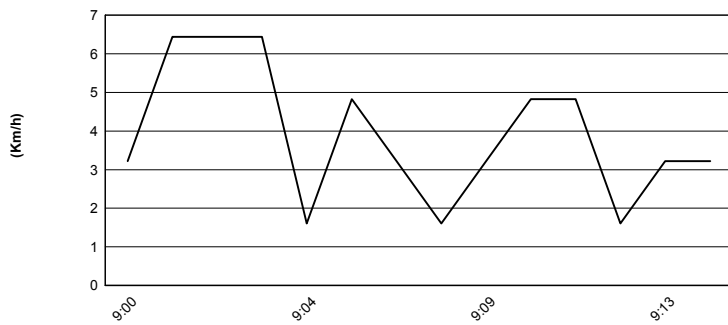
### Air Pressure



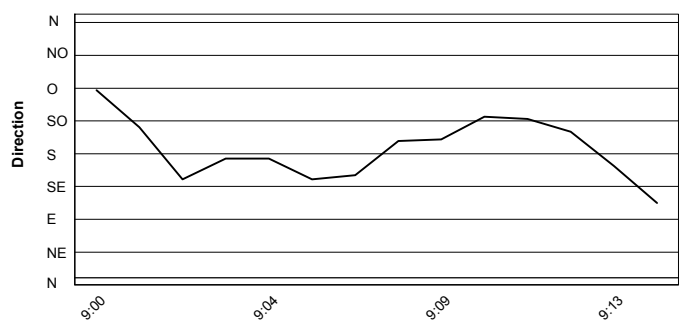
### Humidity



### Wind Speed



### Wind Direction



01/10/2017

These data/results cannot be reproduced, stored and/or transmitted in whole or in part by any manner of electronic, mechanical, photocopying, recording, broadcasting or otherwise now known or herein after developed without the previous express consent by the copyright owner, except for reproduction in daily press and regular printed publications on sale to the public within 60 days of the event related to those data/results and always provided that copyright symbol appears together as follows below.

© DORNA WSBK ORGANIZATION Srl 2017

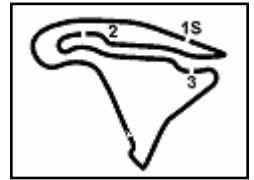


Official Tyre Supplier



Official Timekeeper





Magny-Cours 4.411 m

## French Round, 29-30 September - 1 October 2017

### World Supersport - Starting Grid

19 Laps x 4,411 km = 83,809 km

						1		
				2		66		1
		3		32		TUULI N.		
		CARICASULO F.		MORAIS S.		Yamaha 1'43.833 SP2		
		Yamaha 1'44.105 SP2		Yamaha 1'43.985 SP2				
				5		4		2
		6		26		REA G.		
		CLUZEL J.		WATANABE K.		Kawasaki 1'44.998 SP2		
		Honda 1'46.029 SP2		Kawasaki 1'45.346 SP2				
				8		7		3
		9		99		BERGMAN C.		
		ZACCONE A.		JACOBSEN P.		Honda 1'46.455 SP2		
		MV Agusta 1'49.248 SP2		MV Agusta 1'46.749 SP2				
				11		10		4
		12		144		CANUCCI M.		
		GAMARINO C.		MAHIAS L.		Kawasaki 1'49.301 SP2		
		Honda 1'52.395 SP1		Yamaha 1'49.824 SP2				
				14		13		5
		15		83		HARTOG R.		
		BALDOLINI A.		EPIS L.		Kawasaki 1'52.809 SP1		
		Yamaha 1'54.029 SP1		Kawasaki 1'53.809 SP1				
				17		16		6
		18		35		SMITH K.		
		KHAIRUDDIN Z.		HILL S.		Honda 1'54.077 SP1		
		Kawasaki 1'54.588 SP1		Triumph 1'54.236 SP1				
				20		19		7
		21		87		STAPLEFORD L.		
		SOOMER H.		ZANETTI L.		Triumph 1'55.135 SP1		
		Honda 1'55.877 SP1		MV Agusta 1'55.164 SP1				
				23		22		8
		24		2		ROLFO R.		
		OKUBO H.		TANGRE C.		Honda 1'56.069 SP1		
		Honda 1'56.456 SP1		Suzuki 1'56.383 SP1				
				26		25		9
		27		77		CALERO N.		
		FROSSARD S.		RYDE K.		Kawasaki 1'59.032 SP1		
		Yamaha 2'01.181 SP1		Kawasaki 2'00.546 SP1				
				29		28		10
		74		VAN SIKKELERUS J.		SEBESTYÉN P.		
		Yamaha 1'59.305 SP1		Yamaha 1'59.305 SP1		Kawasaki 1'55.494 SP1		

N.1 (Sofuoglu K.) will not take part in the race. Declared unfit after SP2  
 The N.56 (Sebestyen P.) will start the race from the pit lane according to Art. 1.21.23  
 The N.74 (Van Sikkelerus J.) will start the race from the pit lane according to Art. 1.21.23

01/10/2017 Jury President .....

..... Race Director

These data/results cannot be reproduced, stored and/or transmitted in whole or in part by any manner of electronic, mechanical, photocopying, recording, broadcasting or otherwise now known or herein after developed without the previous express consent by the copyright owner, except for reproduction in daily press and regular printed publications on sale to the public within 60 days of the event related to those data/results and always provided that copyright symbol appears together as follows below.

© DORNA WSBK ORGANIZATION Srl 2017

FICR PERUGIA TIMING



Official Tyre Supplier



Official Timekeeper