

Donington Park 4.023 m

## UK Round, 26-27-28 May 2017

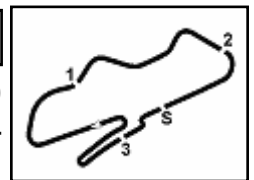
### World Supersport 300 - Biographical Entry List

No.	Rider (Abbreviation)			Nat	Bike Team	Wins 2017	Podiums 2017	Pole 2017	Races 2017	Tyres
	Age	Date of Birth	Place of Birth							
1	2	<b>CARRASCO Ana</b> (Car)	Murcia	ESP	<b>Kawasaki Ninja 300</b> ETG Racing				3	Pirelli
2	6	<b>SCHOTMAN Robert</b> (Sch)	Dordrecht	NED	<b>Yamaha YZF-R3</b> GRT Yamaha WorldSSP300 Team				3	Pirelli
3	7	<b>SETTIMO Nicola</b> (Set)	Camposampietro	ITA	<b>Yamaha YZF-R3</b> Bierreti By 2R				2	Pirelli
4	9	<b>DOORAKKERS Ruben</b> (Doo)	Breda	NED	<b>Yamaha YZF-R3</b> MVR Racing				3	Pirelli
5	11	<b>CUPAIOLI Nicolas</b> (Cup)	Vasto (CH)	ITA	<b>Yamaha YZF-R3</b> 3ENNE#Racing				2	Pirelli
6	12	<b>RUSMIPUTRO Ali Adriansyah</b> (Rus)	Jakarta	INA	<b>Yamaha YZF-R3</b> Pertamina Almeria Racing Team				3	Pirelli
7	13	<b>FACCO Jacopo</b> (Fac)	Monselice (PD)	ITA	<b>Yamaha YZF-R3</b> Bierreti By 2R				3	Pirelli
8	14	<b>DE LA VEGA Enzo</b> (DeL)	Cagnes Sur-Mer	FRA	<b>Yamaha YZF-R3</b> GRT Yamaha WorldSSP300 Team				3	Pirelli
9	15	<b>COPPOLA Alfonso</b> (Cop)	Scafati (SA)	ITA	<b>Yamaha YZF-R3</b> SK Racing		2		3	Pirelli
10	17	<b>NODERER Gabriel</b> (Nod)	Roth	GER	<b>Honda CBR500R</b> Scuderia Maranga Racing				3	Pirelli
11	18	<b>MURLEY Alex</b> (Mur)	Solihull	GBR	<b>Yamaha YZF-R3</b> Team Toth				3	Pirelli
12	19	<b>ROVELLI Edoardo</b> (RoE)	Gallarate (VA)	ITA	<b>Yamaha YZF-R3</b> ParkinGO DS Junior Team				3	Pirelli
13	20	<b>LOUREIRO Dorren</b> (Lou)	Johannesburg	RSA	<b>Yamaha YZF-R3</b> DS Junior Team				3	Pirelli
14	21	<b>BIDDLE Avalon</b> (Bid)	Auckland	NZL	<b>Kawasaki Ninja 300</b> Sourz Foods - Benjan Racing				3	Pirelli
15	22	<b>KALININ Mykyta</b> (KaM)	Odessa	UKR	<b>Yamaha YZF-R3</b> Team MOTOXRACING		1		3	Pirelli
16	23	<b>BASTIANELLI Manuel</b> (Bas)	Rome	ITA	<b>Kawasaki Ninja 300</b> 3570 Made in CIV				3	Pirelli
17	25	<b>SÁNCHEZ Borja</b> (Sán)	La Coruña	ESP	<b>Yamaha YZF-R3</b> Halcourier Racing			1	3	Pirelli
18	26	<b>HOPKINS Luke</b> (Hop)	Teynham	GBR	<b>Kawasaki Ninja 300</b> Hopkins Racing				1	Pirelli
19	27	<b>ROVELLI Filippo</b> (RoF)	Gallarate (VA)	ITA	<b>Yamaha YZF-R3</b> ParkinGO DS Junior Team				3	Pirelli
20	28	<b>GIACOMINI Paolo</b> (Gia)	Macerata	ITA	<b>Yamaha YZF-R3</b> Terra e Moto				3	Pirelli
21	33	<b>VALLE Daniel</b> (Val)	Madrid	ESP	<b>Yamaha YZF-R3</b> Halcourier Racing		1		3	Pirelli
22	35	<b>TRIGLIA Alex</b> (Tri)	Massa	ITA	<b>Honda CBR500R</b> Scuderia Maranga Racing				3	Pirelli
23*	41	<b>GARCIA Marc</b> (Gar)	Barcelona	ESP	<b>Yamaha YZF-R3</b> Halcourier Racing	1	1		3	Pirelli
24	53	<b>GRIMOUX Valentin</b> (Gri)	Laval	FRA	<b>Yamaha YZF-R3</b> Team Toth					Pirelli
25	62	<b>SCHULTZ Jared</b> (Scz)	Western Cupe	RSA	<b>Kawasaki Ninja 300</b> DDM by BWG_Bike & Motor RT_Grimaldi				2	Pirelli
26	64	<b>PAK Asrin Rodi</b> (Pak)	Cankaya	TUR	<b>Kawasaki Ninja 300</b> Kawasaki Puccetti Racing				2	
27	75	<b>DEROUE Scott</b> (Der)	Nijkerkerveen	NED	<b>Kawasaki Ninja 300</b> MTM HS Kawasaki	2	2	1	3	Pirelli
28	79	<b>TAYLOR Chris</b> (Tay)	Herley in Arden	GBR	<b>Kawasaki Ninja 300</b> MTM HS Kawasaki	2	2	1	3	Pirelli
29	80	<b>PONTONE Armando</b> (Pon)	Pontecorvo (FR)	ITA	<b>Yamaha YZF-R3</b> IODARacing				3	Pirelli
30	84	<b>CARBONERA Michael</b> (Cao)	Cento Di Ferrara	ITA	<b>Yamaha YZF-R3</b> SK Racing				3	Pirelli
31	87	<b>LICCIARDI Angelo</b> (Lic)	Genk	BEL	<b>Yamaha YZF-R3</b> Team Trasimeno				3	Pirelli
32	88	<b>PEREZ Mika</b> (Per)	Altea	ESP	<b>Honda CBR500R</b> WILSport Racedays		1	1	3	Pirelli
33	95	<b>DE GRUTTOLA Giuseppe</b> (DeG)	Ariano Irpino (AV)	ITA	<b>Yamaha YZF-R3</b> SK Racing				3	Pirelli
34	99	<b>GRASSIA Paolo</b> (Gra)	S.Maria Capua Vetere (CE)	ITA	<b>Kawasaki Ninja 300</b> 3570 Made in CIV				3	Pirelli
35	121	<b>PATOVA Kimi</b> (Pat)	Hyvinkää	FIN	<b>Yamaha YZF-R3</b> Kallio Racing				3	Pirelli
36	130	<b>FERREIRA Renzo</b> (Fer)	Campinas	BRA	<b>Yamaha YZF-R3</b> Kallio Racing				3	Pirelli

26/05/2017 \* = Wild Card

These data/results cannot be reproduced, stored and/or transmitted in whole or in part by any manner of electronic, mechanical, photocopying, recording, broadcasting or otherwise now known or herein after developed without the previous express consent by the copyright owner, except for reproduction in daily press and regular printed publications on sale to the public within 60 days of the event related to those data/results and always provided that copyright symbol appears together as follows below.

© DORNA WSBK ORGANIZATION Srl 2017


**UK Round, 26-27-28 May 2017**
**World Supersport 300 - Results Free Practice 1st Session**

No.	Rider	Nat	Team	Bike	Time	Gap	Rel.	Laps	Speed	
									Avg	Max
1	15 A. COPPOLA	ITA	SK Racing	Yamaha YZF-R3	<b>1'46.333</b>			14	136,202	<b>183,1</b>
2	88 M. PEREZ	ESP	WILSport Racedays	Honda CBR500R	<b>1'46.430</b>	0.097	0.097	13	136,078	<b>180,3</b>
3	41 M. GARCIA	ESP	Halcourier Racing	Yamaha YZF-R3	<b>1'46.541</b>	0.208	0.111	16	135,936	<b>183,4</b>
4	95 G. DE GRUTTOLA	ITA	SK Racing	Yamaha YZF-R3	<b>1'46.542</b>	0.209	0.001	14	135,935	<b>180,9</b>
5	25 B. SÁNCHEZ	ESP	Halcourier Racing	Yamaha YZF-R3	<b>1'46.586</b>	0.253	0.044	16	135,879	<b>184,3</b>
6	79 C. TAYLOR	GBR	MTM HS Kawasaki	Kawasaki Ninja 300	<b>1'46.600</b>	0.267	0.014	13	135,861	<b>183,7</b>
7	20 D. LOUREIRO	RSA	DS Junior Team	Yamaha YZF-R3	<b>1'46.618</b>	0.285	0.018	14	135,838	<b>182,4</b>
8	6 R. SCHOTMAN	NED	GRT Yamaha WorldSSP300 Team	Yamaha YZF-R3	<b>1'46.818</b>	0.485	0.200	16	135,584	<b>182,4</b>
9	14 E. DE LA VEGA	FRA	GRT Yamaha WorldSSP300 Team	Yamaha YZF-R3	<b>1'47.072</b>	0.739	0.254	16	135,262	<b>180,3</b>
10	33 D. VALLE	ESP	Halcourier Racing	Yamaha YZF-R3	<b>1'47.143</b>	0.810	0.071	16	135,173	<b>183,7</b>
11	99 P. GRASSIA	ITA	3570 Made in CIV	Kawasaki Ninja 300	<b>1'47.372</b>	1.039	0.229	15	134,884	<b>178,2</b>
12	80 A. PONTONE	ITA	IODARacing	Yamaha YZF-R3	<b>1'47.402</b>	1.069	0.030	14	134,847	<b>179,4</b>
13	12 A. RUSMIPUTRO	INA	Pertamina Almeria Racing Team	Yamaha YZF-R3	<b>1'47.444</b>	1.111	0.042	12	134,794	<b>179,7</b>
14	22 M. KALININ	UKR	Team MOTOXRACING	Yamaha YZF-R3	<b>1'47.604</b>	1.271	0.160	14	134,594	<b>180,3</b>
15	28 P. GIACOMINI	ITA	Terra e Moto	Yamaha YZF-R3	<b>1'47.699</b>	1.366	0.095	15	134,475	<b>178,2</b>
16	75 S. DEROUÉ	NED	MTM HS Kawasaki	Kawasaki Ninja 300	<b>1'47.814</b>	1.481	0.115	14	134,331	<b>180,6</b>
17	13 J. FACCO	ITA	Bierreti By 2R	Yamaha YZF-R3	<b>1'47.965</b>	1.632	0.151	15	134,143	<b>179,1</b>
18	18 A. MURLEY	GBR	Team Toth	Yamaha YZF-R3	<b>1'48.213</b>	1.880	0.248	13	133,836	<b>178,2</b>
19	87 A. LICCIARDI	BEL	Team Trasimeno	Yamaha YZF-R3	<b>1'48.414</b>	2.081	0.201	15	133,588	<b>179,1</b>
20	23 M. BASTIANELLI	ITA	3570 Made in CIV	Kawasaki Ninja 300	<b>1'48.424</b>	2.091	0.010	14	133,576	<b>181,5</b>
21	2 A. CARRASCO	ESP	ETG Racing	Kawasaki Ninja 300	<b>1'48.636</b>	2.303	0.212	16	133,315	<b>184,6</b>
22	27 F. ROVELLI	ITA	ParkinGO DS Junior Team	Yamaha YZF-R3	<b>1'48.698</b>	2.365	0.062	14	133,239	<b>178,8</b>
23	35 A. TRIGLIA	ITA	Scuderia Maranga Racing	Honda CBR500R	<b>1'48.916</b>	2.583	0.218	15	132,972	<b>176,2</b>
24	9 R. DOORAKKERS	NED	MVR Racing	Yamaha YZF-R3	<b>1'49.100</b>	2.767	0.184	15	132,748	<b>178,2</b>
25	84 M. CARBONERA	ITA	SK Racing	Yamaha YZF-R3	<b>1'49.363</b>	3.030	0.263	11	132,429	<b>179,7</b>
26	17 G. NODERER	GER	Scuderia Maranga Racing	Honda CBR500R	<b>1'49.459</b>	3.126	0.096	15	132,313	<b>176,2</b>
27	62 J. SCHULTZ	RSA	DDM by BWG_Bike & Motor RT_Grimaldi	Kawasaki Ninja 300	<b>1'50.543</b>	4.210	1.084	13	131,015	<b>179,4</b>
28	121 K. PATOVA	FIN	Kallio Racing	Yamaha YZF-R3	<b>1'50.672</b>	4.339	0.129	15	130,862	<b>181,2</b>
29	130 R. FERREIRA	BRA	Kallio Racing	Yamaha YZF-R3	<b>1'50.819</b>	4.486	0.147	15	130,689	<b>177,9</b>
30	21 A. BIDDLE	NZL	Sourz Foods - Benjan Racing	Kawasaki Ninja 300	<b>1'51.199</b>	4.866	0.380	14	130,242	<b>178,5</b>
31	53 V. GRIMOUX	FRA	Team Toth	Yamaha YZF-R3	<b>1'51.516</b>	5.183	0.317	14	129,872	<b>170,6</b>
32	26 L. HOPKINS	GBR	Hopkins Racing	Kawasaki Ninja 300	<b>1'51.804</b>	5.471	0.288	14	129,537	<b>179,4</b>
33	7 N. SETTIMO	ITA	Bierreti By 2R	Yamaha YZF-R3	<b>1'52.201</b>	5.868	0.397	15	129,079	<b>176,5</b>
34	19 E. ROVELLI	ITA	ParkinGO DS Junior Team	Yamaha YZF-R3	<b>1'52.604</b>	6.271	0.403	14	128,617	<b>177,3</b>
35	11 N. CUPAIOLI	ITA	3ENNE#Racing	Yamaha YZF-R3	<b>1'53.196</b>	6.863	0.592	15	127,944	<b>176,5</b>
36	64 A. PAK	TUR	Kawasaki Puccetti Racing	Kawasaki Ninja 300	<b>1'53.743</b>	7.410	0.547	14	127,329	<b>174,8</b>

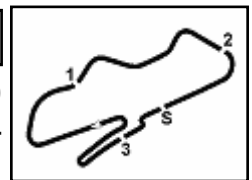
Qualifying Lap Time (107% of 1'46.333): 1'53.777

AIR	Humidity:	52%	Temp:	24°C
TRACK	Condition:	Dry	Temp:	39°C

26/05/2017 Start 12:15 End 12:47 The results are provisional until the end of the time limit for protests and appeals and the completion of the technical checks.

These data/results cannot be reproduced, stored and/or transmitted in whole or in part by any manner of electronic, mechanical, photocopying, recording, broadcasting or otherwise now known or herein after developed without the previous express consent by the copyright owner, except for reproduction in daily press and regular printed publications on sale to the public within 60 days of the event related to those data/results and always provided that copyright symbol appears together as follows below.

© DORNA WSBK ORGANIZATION Srl 2017



## UK Round, 26-27-28 May 2017

### World Supersport 300 - Results Free Practice 1st Session

#### Session Highlights

Local Time	No. Rider	Description
12.15.00		Start
12.33.50	25 B. SÁNCHEZ	Lap Cancelled - Exit Track Limits 10
12.39.58	23 M. BASTIANELLI	On the Gravel - Re-Joined - Turn 8
12.47.28		End Of Session

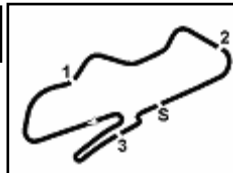
#### Fastest Laps Sequence

No.	Rider	Nat	Team	Bike	Local Time	Time	Gap	Avg
79	C. TAYLOR	GBR	MTM HS Kawasaki	Kawasaki Ninja 300	12:18'49.652	<b>1'51.518</b>		129,870
87	A. LICCIARDI	BEL	Team Trasimeno	Yamaha YZF-R3	12:18'53.096	<b>1'51.288</b>	-0.230	130,138
75	S. DEROUE	NED	MTM HS Kawasaki	Kawasaki Ninja 300	12:18'58.626	<b>1'51.204</b>	-0.084	130,236
18	A. MURLEY	GBR	Team Toth	Yamaha YZF-R3	12:19'01.031	<b>1'51.022</b>	-0.182	130,450
79	C. TAYLOR	GBR	MTM HS Kawasaki	Kawasaki Ninja 300	12:20'40.268	<b>1'50.616</b>	-0.406	130,929
15	A. COPPOLA	ITA	SK Racing	Yamaha YZF-R3	12:20'42.380	<b>1'48.599</b>	-2.017	133,360
88	M. PEREZ	ESP	WILSport Racedays	Honda CBR500R	12:21'29.975	<b>1'48.060</b>	-0.539	134,026
15	A. COPPOLA	ITA	SK Racing	Yamaha YZF-R3	12:22'30.319	<b>1'47.939</b>	-0.121	134,176
88	M. PEREZ	ESP	WILSport Racedays	Honda CBR500R	12:23'17.092	<b>1'47.117</b>	-0.822	135,205
88	M. PEREZ	ESP	WILSport Racedays	Honda CBR500R	12:26'51.375	<b>1'46.782</b>	-0.335	135,630
15	A. COPPOLA	ITA	SK Racing	Yamaha YZF-R3	12:36'55.961	<b>1'46.333</b>	-0.449	136,202

26/05/2017      Start      End      The results are provisional until the end of the time limit for protests and appeals and the completion of the technical checks.  
 12:15      12:47

These data/results cannot be reproduced, stored and/or transmitted in whole or in part by any manner of electronic, mechanical, photocopying, recording, broadcasting or otherwise now known or herein after developed without the previous express consent by the copyright owner, except for reproduction in daily press and regular printed publications on sale to the public within 60 days of the event related to those data/results and always provided that copyright symbol appears together as follows below.

© DORNA WSBK ORGANIZATION Srl 2017



Donington Park 4.023 m

UK Round, 26-27-28 May 2017

World Supersport 300 - Best Sector & Speed Free Practice 1st Session

**BEST LAP**

1	15 A. COPPOLA	Yamaha YZF-R3	1'46.333
2	88 M. PEREZ	Honda CBR500R	1'46.430
3	41 M. GARCIA	Yamaha YZF-R3	1'46.541
4	95 G. DE GRUTTOLA	Yamaha YZF-R3	1'46.542
5	25 B. SANCHEZ	Yamaha YZF-R3	1'46.586
6	79 C. TAYLOR	Kawasaki Ninja 300	1'46.600
7	20 D. LOUREIRO	Yamaha YZF-R3	1'46.618
8	6 R. SCHOTMAN	Yamaha YZF-R3	1'46.818
9	14 E. DE LA VEGA	Yamaha YZF-R3	1'47.072
10	33 D. VALLE	Yamaha YZF-R3	1'47.143
11	99 P. GRASSIA	Kawasaki Ninja 300	1'47.372
12	80 A. PONTONE	Yamaha YZF-R3	1'47.402
13	12 A. RUSMIPUTRO	Yamaha YZF-R3	1'47.444
14	22 M. KALININ	Yamaha YZF-R3	1'47.604
15	28 P. GIACOMINI	Yamaha YZF-R3	1'47.699
16	75 S. DEROUE	Kawasaki Ninja 300	1'47.814
17	13 J. FACCO	Yamaha YZF-R3	1'47.965
18	18 A. MURLEY	Yamaha YZF-R3	1'48.213
19	87 A. LICCIARDI	Yamaha YZF-R3	1'48.414
20	23 M. BASTIANELLI	Kawasaki Ninja 300	1'48.424
21	2 A. CARRASCO	Kawasaki Ninja 300	1'48.636
22	27 F. ROVELLI	Yamaha YZF-R3	1'48.698
23	35 A. TRIGLIA	Honda CBR500R	1'48.916
24	9 R. DOORAKKERS	Yamaha YZF-R3	1'49.100
25	84 M. CARBONERA	Yamaha YZF-R3	1'49.363
26	17 G. NODERER	Honda CBR500R	1'49.459
27	62 J. SCHULTZ	Kawasaki Ninja 300	1'50.543
28	121 K. PATOVA	Yamaha YZF-R3	1'50.672
29	130 R. FERREIRA	Yamaha YZF-R3	1'50.819
30	21 A. BIDDLE	Kawasaki Ninja 300	1'51.199
31	53 V. GRIMOUX	Yamaha YZF-R3	1'51.516
32	26 L. HOPKINS	Kawasaki Ninja 300	1'51.804
33	7 N. SETTIMO	Yamaha YZF-R3	1'52.201
34	19 E. ROVELLI	Yamaha YZF-R3	1'52.604
35	11 N. CUPAIOLI	Yamaha YZF-R3	1'53.196
36	64 A. PAK	Kawasaki Ninja 300	1'53.743

**SPEED**

1	2 A. CARRASCO	Kawasaki Ninja 300	184.6
2	25 B. SANCHEZ	Yamaha YZF-R3	184.3
3	79 C. TAYLOR	Kawasaki Ninja 300	183.7
4	33 D. VALLE	Yamaha YZF-R3	183.7
5	41 M. GARCIA	Yamaha YZF-R3	183.4
6	15 A. COPPOLA	Yamaha YZF-R3	183.1
7	20 D. LOUREIRO	Yamaha YZF-R3	182.4
8	6 R. SCHOTMAN	Yamaha YZF-R3	182.4
9	23 M. BASTIANELLI	Kawasaki Ninja 300	181.5
10	121 K. PATOVA	Yamaha YZF-R3	181.2
11	95 G. DE GRUTTOLA	Yamaha YZF-R3	180.9
12	75 S. DEROUE	Kawasaki Ninja 300	180.6
13	22 M. KALININ	Yamaha YZF-R3	180.3
14	14 E. DE LA VEGA	Yamaha YZF-R3	180.3
15	88 M. PEREZ	Honda CBR500R	180.3
16	84 M. CARBONERA	Yamaha YZF-R3	179.7
17	12 A. RUSMIPUTRO	Yamaha YZF-R3	179.7
18	26 L. HOPKINS	Kawasaki Ninja 300	179.4
19	80 A. PONTONE	Yamaha YZF-R3	179.4
20	62 J. SCHULTZ	Kawasaki Ninja 300	179.4
21	87 A. LICCIARDI	Yamaha YZF-R3	179.1
22	13 J. FACCO	Yamaha YZF-R3	179.1
23	27 F. ROVELLI	Yamaha YZF-R3	178.8
24	21 A. BIDDLE	Kawasaki Ninja 300	178.5
25	9 R. DOORAKKERS	Yamaha YZF-R3	178.2
26	28 P. GIACOMINI	Yamaha YZF-R3	178.2
27	18 A. MURLEY	Yamaha YZF-R3	178.2
28	99 P. GRASSIA	Kawasaki Ninja 300	178.2
29	130 R. FERREIRA	Yamaha YZF-R3	177.9
30	19 E. ROVELLI	Yamaha YZF-R3	177.3
31	7 N. SETTIMO	Yamaha YZF-R3	176.5
32	11 N. CUPAIOLI	Yamaha YZF-R3	176.5
33	35 A. TRIGLIA	Honda CBR500R	176.2
34	17 G. NODERER	Honda CBR500R	176.2
35	64 A. PAK	Kawasaki Ninja 300	174.8
36	53 V. GRIMOUX	Yamaha YZF-R3	170.6

SEG. 1		SEG. 2		SEG. 3		SEG. 4		SEG. 5						
1	88 M. PEREZ	23.386	1	88 M. PEREZ	28.528	1	95 G. DE GRUTTOL	13.633	1	20 D. LOUREIRO	12.616	1	25 B. SANCHEZ	27.254
2	15 A. COPPOLA	23.457	2	6 R. SCHOTMAN	28.540	2	20 D. LOUREIRO	13.706	2	28 P. GIACOMINI	12.747	2	15 A. COPPOLA	27.258
3	95 G. DE GRUTTOL	23.524	3	79 C. TAYLOR	28.544	3	15 A. COPPOLA	13.720	3	88 M. PEREZ	12.757	3	99 P. GRASSIA	27.308
4	33 D. VALLE	23.545	4	15 A. COPPOLA	28.566	4	41 M. GARCIA	13.752	4	25 B. SANCHEZ	12.800	4	20 D. LOUREIRO	27.365
5	12 A. RUSMIPUTRO	23.547	5	95 G. DE GRUTTOL	28.685	5	25 B. SANCHEZ	13.776	5	14 E. DE LA VEGA	12.825	5	88 M. PEREZ	27.372
6	87 A. LICCIARDI	23.554	6	25 B. SANCHEZ	28.770	6	88 M. PEREZ	13.781	6	95 G. DE GRUTTOL	12.853	6	6 R. SCHOTMAN	27.415
7	20 D. LOUREIRO	23.561	7	41 M. GARCIA	28.806	7	18 A. MURLEY	13.791	7	75 S. DEROUE	12.862	7	95 G. DE GRUTTOL	27.419
8	41 M. GARCIA	23.568	8	13 J. FACCO	28.832	8	6 R. SCHOTMAN	13.803	8	41 M. GARCIA	12.873	8	41 M. GARCIA	27.438
9	25 B. SANCHEZ	23.619	9	80 A. PONTONE	28.889	9	75 S. DEROUE	13.817	9	99 P. GRASSIA	12.925	9	14 E. DE LA VEGA	27.477
10	79 C. TAYLOR	23.641	10	99 P. GRASSIA	28.904	10	79 C. TAYLOR	13.836	10	79 C. TAYLOR	12.975	10	22 M. KALININ	27.509
11	6 R. SCHOTMAN	23.642	11	20 D. LOUREIRO	28.959	11	14 E. DE LA VEGA	13.867	11	33 D. VALLE	12.990	11	23 M. BASTIANELLI	27.524
12	22 M. KALININ	23.653	12	33 D. VALLE	28.982	12	2 A. CARRASCO	13.896	12	6 R. SCHOTMAN	13.015	12	33 D. VALLE	27.533
13	2 A. CARRASCO	23.689	13	12 A. RUSMIPUTRO	28.991	13	33 D. VALLE	13.916	13	15 A. COPPOLA	13.022	13	79 C. TAYLOR	27.550
14	80 A. PONTONE	23.691	14	18 A. MURLEY	29.009	14	13 J. FACCO	13.923	14	23 M. BASTIANELLI	13.023	14	75 S. DEROUE	27.595
15	99 P. GRASSIA	23.696	15	75 S. DEROUE	29.017	15	12 A. RUSMIPUTRO	13.925	15	18 A. MURLEY	13.024	15	28 P. GIACOMINI	27.639
16	75 S. DEROUE	23.754	16	14 E. DE LA VEGA	29.029	16	80 A. PONTONE	13.942	16	84 M. CARBONERA	13.050	16	27 F. ROVELLI	27.690
17	13 J. FACCO	23.762	17	9 R. DOORAKKER	29.141	17	9 R. DOORAKKER	13.951	17	13 J. FACCO	13.056	17	12 A. RUSMIPUTRO	27.698
18	23 M. BASTIANELLI	23.766	18	22 M. KALININ	29.152	18	22 M. KALININ	13.976	18	27 F. ROVELLI	13.069	18	80 A. PONTONE	27.732
19	14 E. DE LA VEGA	23.782	19	28 P. GIACOMINI	29.152	19	84 M. CARBONERA	13.981	19	80 A. PONTONE	13.148	19	18 A. MURLEY	27.788
20	27 F. ROVELLI	23.842	20	87 A. LICCIARDI	29.223	20	87 A. LICCIARDI	13.983	20	2 A. CARRASCO	13.150	20	35 A. TRIGLIA	27.808
21	84 M. CARBONERA	23.931	21	23 M. BASTIANELLI	29.246	21	28 P. GIACOMINI	14.038	21	130 R. FERREIRA	13.166	21	87 A. LICCIARDI	27.858
22	35 A. TRIGLIA	23.973	22	2 A. CARRASCO	29.309	22	17 G. NODERER	14.038	22	87 A. LICCIARDI	13.168	22	2 A. CARRASCO	27.981
23	28 P. GIACOMINI	24.047	23	35 A. TRIGLIA	29.314	23	23 M. BASTIANELLI	14.040	23	22 M. KALININ	13.192	23	84 M. CARBONERA	27.982
24	18 A. MURLEY	24.073	24	17 G. NODERER	29.362	24	99 P. GRASSIA	14.057	24	9 R. DOORAKKER	13.207	24	13 J. FACCO	28.077
25	21 A. BIDDLE	24.101	25	27 F. ROVELLI	29.700	25	62 J. SCHULTZ	14.086	25	12 A. RUSMIPUTRO	13.219	25	130 R. FERREIRA	28.264
26	121 K. PATOVA	24.173	26	84 M. CARBONERA	29.744	26	27 F. ROVELLI	14.091	26	35 A. TRIGLIA	13.239	26	17 G. NODERER	28.341
27	17 G. NODERER	24.200	27	62 J. SCHULTZ	29.774	27	35 A. TRIGLIA	14.115	27	17 G. NODERER	13.278	27	9 R. DOORAKKER	28.367
28	9 R. DOORAKKER	24.218	28	21 A. BIDDLE	29.918	28	26 L. HOPKINS	14.246	28	62 J. SCHULTZ	13.364	28	121 K. PATOVA	28.369
29	62 J. SCHULTZ	24.313	29	53 V. GRIMOUX	30.076	29	21 A. BIDDLE	14.247	29	121 K. PATOVA	13.402	29	21 A. BIDDLE	28.392
30	130 R. FERREIRA	24.332	30	121 K. PATOVA	30.204	30	53 V. GRIMOUX	14.276	30	26 L. HOPKINS	13.427	30	7 N. SETTIMO	28.464
31	26 L. HOPKINS	24.346	31	26 L. HOPKINS	30.292	31	130 R. FERREIRA	14.301	31	21 A. BIDDLE	13.486	31	62 J. SCHULTZ	28.537
32	11 N. CUPAIOLI	24.522	32	130 R. FERREIRA	30.357	32	19 E. ROVELLI	14.364	32	19 E. ROVELLI	13.489	32	53 V. GRIMOUX	28.667
33	19 E. ROVELLI	24.594	33	7 N. SETTIMO	30.425	33	121 K. PATOVA	14.387	33	7 N. SETTIMO	13.686	33	26 L. HOPKINS	28.745
34	7 N. SETTIMO	24.597	34	11 N. CUPAIOLI	30.523	34	64 A. PAK	14.477	34	53 V. GRIMOUX	13.737	34	19 E. ROVELLI	29.005
35	53 V. GRIMOUX	24.600	35	64 A. PAK	30.636	35	7 N. SETTIMO	14.604	35	64 A. PAK	13.761	35	11 N. CUPAIOLI	29.036
36	64 A. PAK	25.029	36	19 E. ROVELLI	30.666	36	11 N. CUPAIOLI	14.608	36	11 N. CUPAIOLI	13.794	36	64 A. PAK	29.499

26/05/2017

These data/results cannot be reproduced, stored and/or transmitted in whole or in part by any manner of electronic, mechanical, photocopying, recording, broadcasting or otherwise now known or herein after developed without the previous express consent by the copyright owner, except for reproduction in daily press and regular printed publications on sale to the public within 60 days of the event related to those data/results and always provided that copyright symbol appears together as follows below.

© DORNA WSBK ORGANIZATION Srl 2017

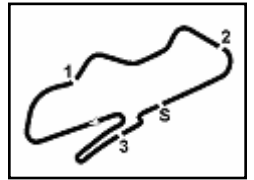
FICR PERUGIA TIMING



Official Tyre Supplier



Official Timekeeper



UK Round, 26-27-28 May 2017

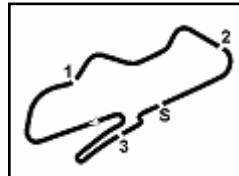
World Supersport 300 - Ideal Times Free Practice 1st Session

Donington Park 4.023 m  
1 / 2

No.	Rider	Nat	Bike	Seg. 1	Seg. 2	Seg. 3	Seg. 4	Seg. 5	Ideal Time		
				Diff. 1	Diff. 2	Diff. 3	Diff. 4	Diff. 5	Best Lap	Pos.	Diff.
1	88 M. PEREZ	ESP	Honda CBR500R	23.386 0.097	28.528	13.781 0.509	12.757	27.372	1'45.824 1'46.430	2	0.606
2	15 A. COPPOLA	ITA	Yamaha YZF-R3	23.457 0.009	28.566	13.720 0.022	13.022 0.142	27.258 0.137	1'46.023 1'46.333	1	0.310
3	95 G. DE GRUTTOLA	ITA	Yamaha YZF-R3	23.524	28.685	13.633	12.853 0.195	27.419 0.233	1'46.114 1'46.542	4	0.428
4	20 D. LOUREIRO	RSA	Yamaha YZF-R3	23.561 0.067	28.959	13.706	12.616	27.365 0.344	1'46.207 1'46.618	7	0.411
5	25 B. SÁNCHEZ	ESP	Yamaha YZF-R3	23.619 0.073	28.770	13.776	12.800 0.219	27.254 0.075	1'46.219 1'46.586	5	0.367
6	6 R. SCHOTMAN	NED	Yamaha YZF-R3	23.642 0.120	28.540 0.051	13.803 0.232	13.015	27.415	1'46.415 1'46.818	8	0.403
7	41 M. GARCIA	ESP	Yamaha YZF-R3	23.568 0.065	28.806	13.752	12.873	27.438 0.039	1'46.437 1'46.541	3	0.104
8	79 C. TAYLOR	GBR	Kawasaki Ninja 300	23.641 0.054	28.544	13.836	12.975	27.550	1'46.546 1'46.600	6	0.054
9	99 P. GRASSIA	ITA	Kawasaki Ninja 300	23.696 0.132	28.904	14.057 0.350	12.925	27.308	1'46.890 1'47.372	11	0.482
10	33 D. VALLE	ESP	Yamaha YZF-R3	23.545 0.117	28.982	13.916 0.060	12.990	27.533	1'46.966 1'47.143	10	0.177
11	14 E. DE LA VEGA	FRA	Yamaha YZF-R3	23.782 0.081	29.029	13.867	12.825 0.011	27.477	1'46.980 1'47.072	9	0.092
12	75 S. DEROUE	NED	Kawasaki Ninja 300	23.754 0.166	29.017 0.190	13.817 0.091	12.862 0.322	27.595	1'47.045 1'47.814	16	0.769
13	12 A. RUSMIPUTRO	INA	Yamaha YZF-R3	23.547	28.991	13.925 0.060	13.219	27.698 0.004	1'47.380 1'47.444	13	0.064
14	80 A. PONTONE	ITA	Yamaha YZF-R3	23.691	28.889	13.942	13.148	27.732	1'47.402 1'47.402	12	
15	22 M. KALININ	UKR	Yamaha YZF-R3	23.653 0.019	29.152	13.976 0.008	13.192 0.095	27.509	1'47.482 1'47.604	14	0.122
16	23 M. BASTIANELLI	ITA	Kawasaki Ninja 300	23.766	29.246 0.483	14.040 0.044	13.023 0.146	27.524 0.152	1'47.599 1'48.424	20	0.825
17	28 P. GIACOMINI	ITA	Yamaha YZF-R3	24.047	29.152	14.038 0.012	12.747 0.064	27.639	1'47.623 1'47.699	15	0.076
18	13 J. FACCO	ITA	Yamaha YZF-R3	23.762	28.832 0.022	13.923	13.056 0.288	28.077 0.005	1'47.650 1'47.965	17	0.315
19	18 A. MURLEY	GBR	Yamaha YZF-R3	24.073	29.009	13.791 0.097	13.024 0.059	27.788 0.372	1'47.685 1'48.213	18	0.528
20	87 A. LICCIARDI	BEL	Yamaha YZF-R3	23.554 0.374	29.223	13.983 0.254	13.168	27.858	1'47.786 1'48.414	19	0.628
21	2 A. CARRASCO	ESP	Kawasaki Ninja 300	23.689 0.323	29.309	13.896 0.262	13.150 0.026	27.981	1'48.025 1'48.636	21	0.611
22	27 F. ROVELLI	ITA	Yamaha YZF-R3	23.842 0.060	29.700 0.009	14.091 0.007	13.069	27.690 0.230	1'48.392 1'48.698	22	0.306
23	35 A. TRIGLIA	ITA	Honda CBR500R	23.973 0.176	29.314	14.115 0.061	13.239 0.230	27.808	1'48.449 1'48.916	23	0.467
24	84 M. CARBONERA	ITA	Yamaha YZF-R3	23.931 0.236	29.744 0.029	13.981 0.221	13.050	27.982 0.189	1'48.688 1'49.363	25	0.675
25	9 R. DOORAKKERS	NED	Yamaha YZF-R3	24.218 0.025	29.141	13.951	13.207 0.191	28.367	1'48.884 1'49.100	24	0.216
26	17 G. NODERER	GER	Honda CBR500R	24.200	29.362	14.038 0.099	13.278 0.038	28.341 0.103	1'49.219 1'49.459	26	0.240
27	62 J. SCHULTZ	RSA	Kawasaki Ninja 300	24.313 0.153	29.774 0.201	14.086	13.364 0.102	28.537 0.013	1'50.074 1'50.543	27	0.469
28	21 A. BIDDLE	NZL	Kawasaki Ninja 300	24.101 0.174	29.918 0.436	14.247	13.486 0.009	28.392 0.436	1'50.144 1'51.199	30	1.055
29	130 R. FERREIRA	BRA	Yamaha YZF-R3	24.332 0.049	30.357 0.153	14.301	13.166 0.197	28.264	1'50.420 1'50.819	29	0.399
30	121 K. PATOVA	FIN	Yamaha YZF-R3	24.173	30.204 0.117	14.387	13.402 0.020	28.369	1'50.535 1'50.672	28	0.137
31	26 L. HOPKINS	GBR	Kawasaki Ninja 300	24.346 0.004	30.292 0.201	14.246 0.290	13.427 0.253	28.745	1'51.056 1'51.804	32	0.748
32	53 V. GRIMOUX	FRA	Yamaha YZF-R3	24.600	30.076	14.276	13.737 0.160	28.667	1'51.356 1'51.516	31	0.160
33	7 N. SETTIMO	ITA	Yamaha YZF-R3	24.597 0.029	30.425	14.604 0.051	13.686 0.093	28.464 0.252	1'51.776 1'52.201	33	0.425

26/05/2017  
These data/results cannot be reproduced, stored and/or transmitted in whole or in part by any manner of electronic, mechanical, photocopying, recording, broadcasting or otherwise now known or herein after developed without the previous express consent by the copyright owner, except for reproduction in daily press and regular printed publications on sale to the public within 60 days of the event related to those data/results and always provided that copyright symbol appears together as follows below.  
© DORNA WSBK ORGANIZATION Srl 2017





## UK Round, 26-27-28 May 2017

### World Supersport 300 - Ideal Times Free Practice 1st Session

No.	Rider	Nat	Bike	Seg. 1	Seg. 2	Seg. 3	Seg. 4	Seg. 5	Ideal Time			
				Diff. 1	Diff. 2	Diff. 3	Diff. 4	Diff. 5	Best Lap	Pos.	Diff.	
34	19 E. ROVELLI	ITA	Yamaha YZF-R3	24.594	30.666 0.284	14.364 0.015	13.489 0.187	29.005	<b>1'52.118</b>	1'52.604	34	0.486
35	11 N. CUPAIOLI	ITA	Yamaha YZF-R3	24.522	30.523	14.608 0.247	13.794 0.159	29.036 0.307	<b>1'52.483</b>	1'53.196	35	0.713
36	64 A. PAK	TUR	Kawasaki Ninja 300	25.029	30.636	14.477 0.015	13.761	29.499 0.326	<b>1'53.402</b>	1'53.743	36	0.341
<b>Overall Ideal Time</b>				23.386	28.528	13.633	12.616	27.254	<b>1'45.417</b>			

26/05/2017

These data/results cannot be reproduced, stored and/or transmitted in whole or in part by any manner of electronic, mechanical, photocopying, recording, broadcasting or otherwise now known or herein after developed without the previous express consent by the copyright owner, except for reproduction in daily press and regular printed publications on sale to the public within 60 days of the event related to those data/results and always provided that copyright symbol appears together as follows below.

© DORNA WSBK ORGANIZATION Srl 2017

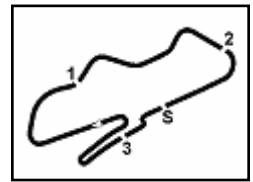
FICR PERUGIA TIMING



Official Tyre Supplier



Official Timekeeper



UK Round, 26-27-28 May 2017

### World Supersport 300 - Chronological Analysis Free Practice 1st Session

Donington Park 4.023 m

1 / 5

1° 15 A. COPPOLA (1'46.333)								
Lap	Seg. 1	Seg. 2	Seg. 3	Seg. 4	Seg. 5	Lap Time	km/h	Local Time
1	24.654	32.741	14.896	14.617	29.789	1'52.397	174.8	12:17:01.384
2	23.988	30.584	14.125	13.592	29.442	1'48.599	174.5	12:18:53.781
3	23.754	29.426	14.001	13.277	27.907	1'47.939	177.9	12:22:30.319
4	24.011	29.648	14.023	15.286	28.617	1'51.585	175.3	12:24:21.904
5	23.697	28.998	13.895	13.069	27.804	1'47.463	179.7	12:26:09.367
6	25.766	30.739	13.730	13.656	35.991	1'59.882 P	183.1	12:28:09.249
7	3'44.805	29.580	13.973	14.610	29.939	5'12.907 P	180.0	12:33:22.156
8	23.736	29.310	13.985	13.130	27.311	1'47.472	175.3	12:35:09.628
9	23.466	28.566	13.742	13.164	27.395	1'46.333	181.2	12:36:55.961
10	23.946	31.143	14.027	13.689	29.056	1'51.861	180.6	12:38:47.822
11	23.539	28.878	13.740	13.022	31.920	1'51.099	177.6	12:40:38.921
12	23.470	29.336	16.011	13.784	27.817	1'50.418	172.8	12:42:29.339
13	23.575	28.997	14.006	14.948	31.586	1'53.112	178.5	12:44:22.451
14	23.457	28.832	13.702	13.154	27.258	1'46.421	177.9	12:46:08.872

2° 88 M. PEREZ (1'46.430)								
Lap	Seg. 1	Seg. 2	Seg. 3	Seg. 4	Seg. 5	Lap Time	km/h	Local Time
1	24.672	33.959	15.207	14.303	29.780	1'51.074	172.5	12:19:41.915
2	23.895	30.040	14.805	13.213	28.344	1'48.060	177.6	12:21:29.975
3	23.884	29.395	13.985	12.923	27.862	1'47.117	178.8	12:23:17.092
4	23.980	28.950	13.856	12.804	27.623	1'47.117	178.8	12:23:17.092
5	23.884	29.199	13.876	12.848	27.598	1'47.501	176.2	12:25:04.593
6	23.884	28.892	13.902	12.910	27.692	1'46.782	175.6	12:26:51.375
7	24.162	30.613	14.677	13.765	32.556	1'55.773 P	172.2	12:28:47.148
8	4'52.122	33.701	14.326	13.458	27.705	6'21.312 P	176.5	12:35:08.460
9	23.677	29.123	14.113	13.646	27.859	1'48.418	177.3	12:36:56.878
10	23.567	29.348	14.083	12.887	27.840	1'47.725	175.6	12:38:44.603
11	23.669	29.708	19.447	20.596	28.381	2'01.801	110.7	12:40:46.404
12	23.554	28.967	13.781	12.840	27.766	1'46.908	180.3	12:42:33.312
13	25.869	34.496	14.217	12.927	27.723	1'55.232	176.2	12:44:28.544
14	23.483	28.528	14.290	12.757	27.372	1'46.430	176.8	12:46:14.974

3° 41 M. GARCIA (1'46.541)								
Lap	Seg. 1	Seg. 2	Seg. 3	Seg. 4	Seg. 5	Lap Time	km/h	Local Time
1	24.706	32.227	14.941	14.624	29.238	1'52.008	179.4	12:17:12.044
2	24.012	30.552	14.218	13.673	28.859	1'49.723	178.2	12:19:04.052
3	23.943	29.891	14.070	13.432	28.228	1'48.923	178.2	12:20:53.775
4	23.939	29.383	14.001	13.655	28.221	1'49.203	179.4	12:22:42.978
5	23.939	29.457	14.029	13.107	27.867	1'48.399	180.9	12:24:31.377
6	23.719	29.557	14.081	13.348	27.792	1'48.497	183.4	12:26:19.874
7	23.916	29.536	15.325	13.793	28.063	1'50.633	139.5	12:28:10.507
8	23.741	29.293	13.815	13.073	27.651	1'47.573	182.7	12:29:58.080
9	23.699	29.036	13.997	13.182	27.627	1'47.541	177.6	12:31:45.621
10	26.010	31.041	14.576	13.425	29.865	1'54.917	169.0	12:33:40.538
11	23.831	28.991	14.054	13.066	30.576	1'50.518	178.8	12:35:31.056
12	23.885	28.942	13.843	13.178	27.919	1'47.767	181.2	12:37:18.823
13	23.625	30.451	14.582	13.941	28.415	1'51.014	171.7	12:39:09.837
14	23.791	28.919	13.990	13.100	27.701	1'47.501	178.2	12:40:57.338
15	23.688	29.025	13.999	13.075	27.782	1'47.569	176.8	12:42:44.907
16	23.633	28.806	13.752	12.873	27.477	1'46.541	180.9	12:44:31.448
17	23.568	28.997	14.007	13.236	27.438	1'47.246	179.1	12:46:18.694

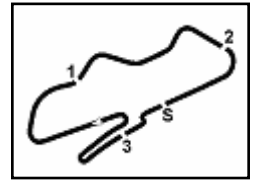
4° 95 G. DE GRUTTOLA (1'46.542)								
Lap	Seg. 1	Seg. 2	Seg. 3	Seg. 4	Seg. 5	Lap Time	km/h	Local Time
1	24.582	33.154	14.629	17.067	30.193	1'52.194	179.7	12:17:03.247
2	24.028	30.218	14.157	13.551	29.686	1'48.871	175.0	12:18:55.441
3	24.197	29.788	14.038	13.159	27.858	1'48.711	175.0	12:20:44.312
4	23.928	29.495	13.970	13.052	27.579	1'48.293	175.6	12:22:32.605
5	23.928	29.781	13.871	12.897	27.724	1'48.201	177.6	12:24:20.806
6	23.790	29.591	14.075	13.138	29.250	1'49.844	175.6	12:26:10.650
7	24.409	29.936	13.998	13.895	37.439	1'59.677 P	174.2	12:28:10.327
8	3'44.633	29.353	13.885	14.313	30.960	5'13.144 P	178.2	12:33:23.471
9	23.922	29.353	13.885	14.313	30.960	1'46.985	179.7	12:35:10.456
10	23.524	28.947	13.770	12.853	27.493	1'46.542	180.6	12:36:56.998
11	23.550	28.685	13.633	13.048	27.652	1'46.542	180.6	12:38:46.286
12	23.668	31.075	13.903	13.215	27.545	1'49.288	178.8	12:40:39.737
13	23.668	29.144	15.253	13.458	31.928	1'53.451	163.9	12:42:36.851
14	23.845	29.027	13.901	13.370	36.971	1'57.114	180.9	12:44:36.851
15	24.006	29.280	13.981	13.042	27.419	1'47.728	175.3	12:46:24.579
16	23.799	29.218	13.938	13.062	27.508	1'47.525	176.8	12:48:12.104

5° 25 B. SÁNCHEZ (1'46.586)								
Lap	Seg. 1	Seg. 2	Seg. 3	Seg. 4	Seg. 5	Lap Time	km/h	Local Time
1	24.682	36.772	15.027	14.309	28.860	1'51.489	178.8	12:17:19.663
2	24.044	30.491	14.404	13.667	28.245	1'49.384	179.4	12:19:11.152
3	24.044	29.973	14.248	13.067	28.052	1'49.384	179.4	12:21:00.536

3	24.031	29.600	13.961	12.941	27.441	1'47.974	180.3	12:22:48.510
4	23.771	29.981	13.974	12.874	27.700	1'48.300	181.8	12:24:36.810
5	24.212	30.786	14.445	13.414	28.570	1'51.427	176.5	12:26:28.237
6	23.905	29.648	14.445	13.355	28.206	1'49.559	183.1	12:28:17.796
7	23.866	29.402	14.163	12.996	28.142	1'48.569	173.4	12:30:06.365
8	25.508	31.666	18.771	16.101	29.241	2'01.287	104.6	12:32:07.652
9	24.522	30.473	14.387	13.205	27.893	1'50.480 C	174.8	12:33:58.132
10	23.957	29.668	14.405	13.238	27.741	1'49.009	175.0	12:35:47.141
11	23.758	29.144	13.974	12.810	27.254	1'46.940	179.1	12:37:34.081
12	26.118	30.262	14.389	13.044	28.395	1'52.208	175.0	12:39:26.289
13	23.713	29.025	14.131	12.800	27.391	1'47.060	177.0	12:41:13.349
14	23.619	29.498	14.193	13.050	31.951	1'52.311	172.8	12:43:05.660
15	23.906	29.413	14.189	13.075	27.721	1'48.304	176.8	12:44:53.964
16	23.692	28.770	13.776	13.019	27.329	1'46.586	184.3	12:46:40.550

6° 79 C. TAYLOR (1'46.600)								
Lap	Seg. 1	Seg. 2	Seg. 3	Seg. 4	Seg. 5	Lap Time	km/h	Local Time
1	24.629	31.197	14.371	13.658	29.250	1'51.518	175.9	12:16:58.134
2	24.309	30.395	14.323	13.446	28.725	1'50.616	174.5	12:18:49.652
3	24.655	29.934	14.110	13.277	28.986	1'50.616	174.5	12:20:40.268
4	2'16.551	30.164	14.368	13.661	36.809	1'59.657 P	171.4	12:22:39.925
5	24.116	29.411	13.875	13.947	28.635	1'48.652	181.2	12:26:22.344
6	24.116	28.778	13.980	13.648	28.130	1'48.652	181.2	12:28:10.996
7	23.641	29.019	13.856	13.623	29.757	1'49.896 P	183.7	12:30:00.892
8	4'11.028	31.314	16.191	13.778	28.939	5'41.250 P	145.7	12:35:42.142
9	24.203	29.555	13.986	13.225	28.277	1'49.246	176.2	12:37:31.388
10	24.194	29.458	14.155	13.217	28.244	1'49.268	175.3	12:39:20.656
11	24.038	29.292	14.196	13.187	27.878	1'48.591	174.2	12:41:09.247
12	24.787	32.991	14.445	13.647	28.247	1'54.117	175.6	12:43:03.364
13	23.781	29.493	13.913	12.980	27.862	1'48.029	179.4	12:44:51.393
14	23.695	28.544	13.836	12.975	27.550	1'46.600	181.2	12:46:37.993

7° 20 D. LOUREIRO (1'46.618)								
Lap	Seg. 1	Seg. 2	Seg. 3	Seg. 4	Seg. 5	Lap Time	km/h	Local Time
1	25.238	34.468	15.331	14.807	29.647	1'53.822	176.8	12:17:16.577
2	24.626	31.493	14.528	13.670	28.893	1'53.822	176.8	12:19:10.399
3	24.031	30.032	14.014	13.131	28.185	1'49.988	176.5	12:21:00.387
4	23.718	29.470	13.991	12.998	27.936	1'48.426	176.8	12:22:48.813
5	23.718	29.497	13.979	12.993	27.907	1'47.794	178.5	12:24:36.607
6	25.788	30.458	14.654	13.208	28.044	1'52.152	169.0	12:26:28.759
7	23.738	29.070	14.327	12.946	27.789	1'47.870	177.3	12:28:16.629
8	23.797	29.734	14.545	13.461	33.318	1'54.855 P	164.1	12:30:11.484
9	3'13.517	30.118	14.153	13.252	28.519	4'39.559 P</		



## UK Round, 26-27-28 May 2017

### World Supersport 300 - Chronological Analysis Free Practice 1st Session

Donington Park 4.023 m

2 / 5

Lap	Seg. 1	Seg. 2	Seg. 3	Seg. 4	Seg. 5	Lap Time	km/h	Local Time
7	25.236	30.954	14.178	13.253	28.113	1'51.734	<b>172.0</b>	12:29'53.421
8	25.161	45.522	15.706	13.744	28.426	2'08.559	<b>164.4</b>	12:32'01.980
9	24.111	29.572	14.688	13.516	28.529	1'50.416	<b>176.2</b>	12:33'52.396
10	24.674	30.511	14.168	13.469	28.394	1'51.216	<b>176.2</b>	12:35'43.612
11	24.248	29.480	14.363	13.585	28.141	1'49.817	<b>172.5</b>	12:37'33.429
12	<b>23.782</b>	29.547	14.380	13.497	28.270	1'49.476	<b>177.9</b>	12:39'22.905
13	23.879	29.278	14.151	13.326	27.849	1'48.483	<b>174.8</b>	12:41'11.388
14	24.274	30.178	14.350	12.976	28.039	1'49.817	<b>172.2</b>	12:43'01.205
15	23.962	29.461	14.057	12.953	27.848	1'48.281	<b>172.2</b>	12:44'49.486
16	23.863	<b>29.029</b>	<b>13.867</b>	12.836	<b>27.477</b>	<b>1'47.072</b>	<b>175.9</b>	12:46'36.558

10° 33 D. VALLE (1'47.143)								
Lap	Seg. 1	Seg. 2	Seg. 3	Seg. 4	Seg. 5	Lap Time	km/h	Local Time
1	24.658	33.863	15.126	14.416	29.006	1'51.880	<b>165.6</b>	12:17'15.460
2	24.412	30.843	14.567	13.711	28.101	1'51.880	<b>174.5</b>	12:19'07.340
3	24.115	30.448	14.447	13.370	27.704	1'50.381	<b>175.9</b>	12:20'57.721
4	23.726	29.653	14.284	13.494	27.652	1'49.198	<b>177.6</b>	12:22'46.919
5	24.009	29.818	14.079	13.306	27.670	1'48.599	<b>180.3</b>	12:24'35.518
6	23.966	29.695	14.067	13.251	27.738	1'48.760	<b>180.0</b>	12:26'24.278
7	23.961	29.741	14.187	13.186	27.899	1'48.979	<b>177.0</b>	12:28'13.257
8	23.961	29.708	14.134	13.208	27.854	1'48.865	<b>176.8</b>	12:30'02.122
9	25.993	29.597	14.076	13.262	28.307	1'49.366	<b>179.1</b>	12:33'52.775
10	24.124	30.249	14.279	13.246	28.307	1'49.366	<b>179.1</b>	12:35'47.287
11	23.718	30.249	14.279	13.246	28.307	1'49.366	<b>179.1</b>	12:37'34.818
12	23.662	29.174	13.947	13.107	27.585	1'47.531	<b>183.7</b>	12:39'26.601
13	23.552	29.513	14.478	13.252	28.284	1'51.783	<b>171.7</b>	12:41'13.744
14	<b>23.645</b>	<b>28.982</b>	13.976	<b>12.990</b>	<b>27.533</b>	<b>1'47.143</b>	<b>181.2</b>	12:43'03.827
15	<b>23.462</b>	<b>29.507</b>	<b>13.916</b>	14.259	28.856	1'50.083	<b>177.6</b>	12:44'52.191
16	23.890	29.373	14.034	13.163	27.904	1'48.364	<b>180.6</b>	12:46'41.043

11° 99 P. GRASSIA (1'47.372)								
Lap	Seg. 1	Seg. 2	Seg. 3	Seg. 4	Seg. 5	Lap Time	km/h	Local Time
1	25.149	34.566	15.123	14.533	29.138	1'52.101	<b>178.2</b>	12:17'10.009
2	24.235	30.763	14.317	13.668	28.204	1'52.101	<b>178.2</b>	12:19'02.110
3	23.968	30.343	14.222	13.343	28.120	1'50.263	<b>173.1</b>	12:20'52.373
4	24.029	29.606	14.609	13.554	27.923	1'49.660	<b>175.9</b>	12:22'42.033
5	24.004	29.759	14.252	13.094	27.672	1'48.806	<b>173.9</b>	12:24'30.839
6	24.203	29.743	14.123	13.648	27.872	1'49.390	<b>178.2</b>	12:26'20.229
7	23.920	29.382	14.488	13.444	27.869	1'49.103	<b>175.6</b>	12:28'09.332
8	23.834	29.463	14.121	13.050	27.536	1'48.004	<b>172.5</b>	12:29'57.336
9	24.050	29.621	14.057	13.110	27.667	1'48.505	<b>176.8</b>	12:31'45.841
10	24.592	30.102	14.314	13.195	35.132	1'57.335 P	<b>172.5</b>	12:33'43.176
11	1'54.724	30.593	14.404	13.121	27.642	3'20.484 P	<b>171.2</b>	12:35'03.660
12	24.142	29.480	14.258	13.058	27.539	1'48.477	<b>171.4</b>	12:38'52.137
13	23.934	29.470	14.352	13.075	27.462	1'48.293	<b>170.3</b>	12:40'40.430
14	23.828	<b>28.904</b>	14.407	<b>12.925</b>	<b>27.308</b>	<b>1'47.372</b>	<b>174.2</b>	12:42'27.802
15	<b>23.696</b>	29.424	14.282	<b>12.925</b>	27.461	1'47.788	<b>172.2</b>	12:44'15.590
16	23.936	29.340	14.081	12.986	27.478	1'47.821	<b>172.5</b>	12:46'03.411

12° 80 A. PONTONE (1'47.402)								
Lap	Seg. 1	Seg. 2	Seg. 3	Seg. 4	Seg. 5	Lap Time	km/h	Local Time
1	24.702	33.334	15.027	14.997	29.600	1'52.845	<b>172.0</b>	12:17'02.002
2	24.663	30.711	14.385	13.797	29.250	1'52.845	<b>172.2</b>	12:18'54.847
3	23.999	29.968	13.972	13.519	28.163	1'50.285	<b>179.4</b>	12:20'45.132
4	24.182	29.816	14.235	13.279	28.395	1'49.724	<b>173.6</b>	12:22'34.856
5	24.018	30.224	14.175	13.839	28.299	1'50.719	<b>177.9</b>	12:24'25.575
6	24.018	29.458	14.340	13.345	28.038	1'49.199	<b>173.9</b>	12:26'14.774
7	23.697	29.873	14.052	13.307	28.144	1'49.073	<b>176.8</b>	12:28'03.847
8	24.018	29.638	14.563	13.529	32.973	1'54.721 P	<b>170.9</b>	12:29'58.568
9	3'38.982	32.828	15.652	14.017	28.662	5'10.141 P	<b>161.4</b>	12:35'08.709
10	24.069	29.146	14.052	13.338	28.090	1'48.695	<b>175.3</b>	12:36'57.404
11	24.042	29.392	14.119	13.253	27.798	1'48.604	<b>173.6</b>	12:38'46.008
12	24.006	29.201	15.010	13.454	36.776	1'58.447	<b>160.7</b>	12:40'44.455
13	24.149	29.548	14.074	13.241	27.999	1'49.011	<b>174.5</b>	12:42'33.466
14	23.925	29.465	14.173	13.226	28.043	1'48.832	<b>175.3</b>	12:44'22.298
15	<b>23.691</b>	<b>28.889</b>	<b>13.942</b>	<b>13.148</b>	<b>27.732</b>	<b>1'47.402</b>	<b>177.0</b>	12:46'09.700

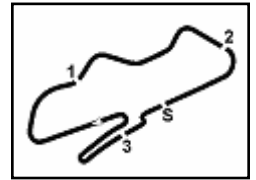
13° 12 A. RUSMIPUTRO (1'47.444)								
Lap	Seg. 1	Seg. 2	Seg. 3	Seg. 4	Seg. 5	Lap Time	km/h	Local Time
1	25.011	34.422	15.170	14.653	32.907	1'52.075 P	<b>175.9</b>	12:17'15.952
2	3'18.172	31.748	14.789	13.340	35.187	2'00.075 P	<b>175.9</b>	12:19'16.027
3	4'01.423	31.097	14.508	13.457	36.323	4'53.557 P	<b>174.5</b>	12:24'09.584
4	4'01.423	31.078	14.362	13.457	28.903	5'29.223 P	<b>172.5</b>	12:29'38.807
5	24.577	29.972	14.271	13.261	28.171	1'50.252	<b>175.3</b>	12:31'29.599
6	24.262	29.922	14.179	13.526	29.064	1'50.953	<b>177.0</b>	12:33'20.012
7	25.629	32.961	16.190	14.995	28.628	1'58.403	<b>144.8</b>	12:35'18.415
8	24.200	29.738	14.063	13.706	35.770	1'57.477	<b>176.8</b>	12:37'15.892
9	25.209	31.385	14.447	13.586	27.985	1'52.612	<b>172.5</b>	12:39'08.504

Lap	Seg. 1	Seg. 2	Seg. 3	Seg. 4	Seg. 5	Lap Time	km/h	Local Time
9	23.800	29.740	<b>13.925</b>	13.394	28.228	1'49.087	<b>178.5</b>	12:40'57.591
10	23.647	29.154	14.041	13.496	<b>27.698</b>	1'48.036	<b>177.6</b>	12:42'45.627
11	<b>23.547</b>	<b>28.991</b>	13.985	<b>13.219</b>	27.702	<b>1'47.444</b>	<b>179.7</b>	12:44'33.071
12	25.200	29.883	14.014	13.498	28.264	1'50.859	<b>177.0</b>	12:46'23.930

14° 22 M. KALININ (1'47.604)								
Lap	Seg. 1	Seg. 2	Seg. 3	Seg. 4	Seg. 5	Lap Time	km/h	Local Time
1	24.876	33.571	14.854	14.202	29.481	1'50.429	<b>175.0</b>	12:17'02.264
2	24.206	30.487	14.208	13.563	27.886	1'50.236	<b>180.3</b>	12:19'03.693
3	23.972	30.253	14.328	13.563	27.886	1'50.236	<b>178.2</b>	12:20'53.929
4	23.893	29.590	<b>13.976</b>	13.192	27.605	1'48.256	<b>179.7</b>	12:22'43.374
5	23.655	29.611	14.436	13.470	27.872	1'49.044	<b>180.3</b>	12:24'31.630
6	<b>23.653</b>	29.194	14.276	13.494	27.689	1'48.306	<b>177.8</b>	12:26'20.674
7	23.968	30.376	13.989	13.479	27.746	1'49.558	<b>174.3</b>	12:28'08.980
8	23.672	<b>29.152</b>	13.984	13.287	<b>27.509</b>	<b>1'47.604</b>	<b>180.0</b>	12:29'58.538
9	24.660	30.681	14.407	13.268	29.065	1'52.081	<b>177.3</b>	12:31'46.142
10	25.390	29.615	14.199	13.489	28.190	1'50.883	<b>172.2</b>	12:33'38.223
11	23.966	29.926	14.390	13.215	27.852	1'49.349	<b>172.8</b>	12:35'29.106
12	23.807	29.534	14.340	17.613	31.678	1'56.972 P	<b>172.8</b>	12:37'18.455
13	2'38.852	31.491	14.303	13.511	30.762	4'08.919 P	<b>171.7</b>	12:39'15.427
14	45.900	30.427	14.231	13.337	28.189	2'12.084 P	<b>173.6</b>	12:43'24.346
								12:45'36.430

15° 28 P. GIACOMINI (1'47.699)								
Lap	Seg. 1	Seg. 2	Seg. 3	Seg. 4	Seg. 5	Lap Time	km/h	Local Time
1	26.454	34.479	15.197	14.206	30.099	1'56.015	<b>166.9</b>	12:17'34.840
2	24.747	30.485	15.539	1				





UK Round, 26-27-28 May 2017

## World Supersport 300 - Chronological Analysis Free Practice 1st Session

Donington Park 4.023 m

3 / 5

18° 18 A. MURLEY (1'48.213)								
Lap	Seg. 1	Seg. 2	Seg. 3	Seg. 4	Seg. 5	Lap Time	km/h	Local Time
1	24.707	32.805	14.312	14.078	29.345	1'51.022	177.9	12:17:01.009
2	24.441	29.297	13.791	13.558	27.877	1'48.964	178.2	12:20:49.995
3	24.073	29.009	13.888	13.083	28.160	1'48.213	177.3	12:22:38.208
4	24.709	30.301	13.991	13.256	34.640	1'56.897 P	175.0	12:24:35.105
5	2'43.976	32.488	14.976	13.504	28.494	4'13.438 P	168.2	12:28:48.543
6	24.491	30.213	14.195	13.319	28.211	1'50.429	172.2	12:30:38.972
7	24.227	29.895	14.092	13.191	28.129	1'49.534	173.9	12:32:28.506
8	24.351	29.862	14.291	13.209	27.960	1'49.673	172.0	12:34:18.179
9	24.405	30.080	14.172	13.642	32.807	1'55.106 P	171.7	12:36:13.285
10	2'15.102	31.180	14.261	13.570	28.194	3'42.307 P	171.2	12:39:55.592
11	24.208	29.457	14.096	13.256	27.907	1'48.924	172.5	12:41:44.516
12	24.308	30.117	14.113	13.053	28.135	1'49.726	172.0	12:43:34.242
13	24.208	29.602	13.928	13.024	27.788	1'48.550	172.5	12:45:22.792

19° 87 A. LICCIARDI (1'48.414)								
Lap	Seg. 1	Seg. 2	Seg. 3	Seg. 4	Seg. 5	Lap Time	km/h	Local Time
1	24.385	30.748	14.050	13.607	28.498	1'51.288	179.1	12:18:53.096
2	24.195	30.147	13.983	13.404	27.934	1'49.663	177.9	12:20:42.759
3	23.554	29.513	14.033	13.324	28.031	1'48.455	177.9	12:22:31.214
4	24.182	29.466	14.111	13.498	27.958	1'49.215	177.0	12:24:20.429
5	24.178	29.699	14.257	13.491	27.911	1'49.536	175.6	12:26:09.965
6	24.076	30.196	14.507	13.647	35.041	1'57.467 P	172.0	12:28:07.432
7	2'27.583	30.019	14.247	13.574	28.644	3'54.067 P	174.8	12:32:01.499
8	23.963	30.032	14.429	13.426	29.808	1'51.658	173.6	12:33:53.157
9	24.009	30.187	14.253	13.452	29.250	1'51.151	177.3	12:35:44.308
10	23.841	29.657	14.055	13.731	29.848	1'51.132	178.8	12:37:35.440
11	23.956	29.431	14.234	13.267	27.881	1'48.769	175.6	12:39:24.209
12	23.928	29.223	14.237	13.168	27.858	1'48.414	175.9	12:41:12.623
13	24.540	29.831	14.272	13.764	28.053	1'50.460	176.2	12:43:03.083
14	23.965	29.646	14.201	13.278	28.209	1'49.299	176.2	12:44:52.382
15	23.845	29.622	14.311	13.670	28.071	1'49.519	174.5	12:46:41.901

20° 23 M. BASTIANELLI (1'48.424)								
Lap	Seg. 1	Seg. 2	Seg. 3	Seg. 4	Seg. 5	Lap Time	km/h	Local Time
1	25.299	31.745	14.529	14.600	29.281	1'55.454	177.6	12:19:04.038
2	24.559	30.112	14.989	13.706	28.351	1'51.717	176.5	12:20:55.755
3	24.314	29.933	14.434	13.393	28.179	1'50.253	176.2	12:22:46.008
4	24.269	29.752	14.250	13.381	28.221	1'49.873	175.0	12:24:35.881
5	23.922	29.581	14.117	13.410	28.024	1'49.054	181.5	12:26:24.935
6	24.494	29.497	14.231	13.203	28.231	1'49.656	176.5	12:28:14.591
7	23.993	29.460	14.040	13.279	27.919	1'48.691	176.2	12:30:03.282
8	24.534	32.149	17.359	14.514	35.736	2'04.292 P	127.1	12:32:07.574
9	3'08.579	31.488	14.538	13.357	28.163	4'36.125 P	172.0	12:36:43.699
10	24.243	29.784	14.329	13.323	27.821	1'49.500	171.4	12:38:33.199
11	26.908	37.669	31.885	15.076	29.000	2'20.538	140.3	12:40:53.737
12	24.262	29.246	14.125	13.220	27.749	1'48.602	174.5	12:42:42.339
13	23.766	29.729	14.084	13.169	27.676	1'48.424	173.4	12:44:30.763
14	23.902	29.773	14.557	13.023	27.524	1'48.779	177.0	12:46:19.542

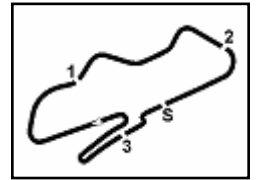
21° 2 A. CARRASCO (1'48.636)								
Lap	Seg. 1	Seg. 2	Seg. 3	Seg. 4	Seg. 5	Lap Time	km/h	Local Time
1	25.241	31.413	14.573	14.375	29.150	1'54.752	177.9	12:19:03.551
2	24.529	30.343	14.755	13.795	28.616	1'52.038	179.7	12:20:55.589
3	24.253	30.139	14.547	13.538	28.421	1'50.898	179.1	12:22:46.487
4	24.071	29.722	14.255	13.630	28.176	1'49.854	179.1	12:24:36.341
5	23.957	29.737	14.293	13.478	28.852	1'50.317	181.2	12:26:26.658
6	24.324	30.559	14.608	14.178	28.738	1'52.407	178.5	12:28:19.065
7	24.097	29.765	14.223	13.417	28.879	1'50.381	178.8	12:30:09.446
8	24.857	30.428	14.400	13.386	28.562	1'51.633	175.6	12:32:01.079
9	24.234	30.201	14.519	13.504	29.740	1'52.198	171.4	12:33:53.277
10	24.082	30.358	14.206	13.466	28.637	1'50.749	181.2	12:35:44.026
11	24.016	29.516	14.097	13.350	28.192	1'49.171	177.3	12:37:33.197
12	23.916	29.534	14.379	13.374	28.235	1'49.438	175.9	12:39:22.635
13	24.012	29.309	14.158	13.176	27.981	1'48.636	175.9	12:41:11.271
14	24.234	31.587	15.741	13.160	28.001	1'52.713	177.0	12:43:03.984
15	23.908	29.522	13.896	13.215	28.197	1'48.738	184.6	12:44:52.722
16	23.689	29.552	14.142	13.377	28.071	1'48.831	179.4	12:46:41.553

22° 27 F. ROVELLI (1'48.698)								
Lap	Seg. 1	Seg. 2	Seg. 3	Seg. 4	Seg. 5	Lap Time	km/h	Local Time
1	25.032	33.142	15.540	14.312	29.399	1'53.473	170.9	12:17:58.408
		31.264	15.165	13.463	28.549			12:19:51.881

2	24.310	30.410	14.711	13.428	28.082	1'50.941	169.0	12:21:42.822
3	24.755	30.720	14.361	18.629	34.984	2'03.449 P	174.8	12:23:46.271
4	2'21.991	30.826	14.497	13.486	28.017	3'48.817 P	172.2	12:27:35.088
5	24.469	30.439	14.207	13.370	27.990	1'50.475	173.1	12:29:25.563
6	24.171	30.294	14.286	13.191	28.113	1'50.055	174.8	12:31:15.618
7	24.175	30.348	14.133	20.641	35.346	2'04.643	175.3	12:33:20.261
8	24.610	30.397	14.221	13.356	28.162	1'50.746	176.8	12:35:11.007
9	24.132	29.700	14.158	13.264	27.934	1'49.188	175.3	12:37:00.195
10	24.115	29.729	14.091	13.093	27.722	1'48.750	175.9	12:38:48.945
11	23.902	29.709	14.098	13.069	27.920	1'48.698	176.2	12:40:37.643
12	24.073	29.870	14.451	13.143	27.948	1'49.485	174.2	12:42:27.128
13	23.842	30.317	14.427	13.113	27.690	1'49.389	178.8	12:44:16.517
14	23.895	39.679	17.305	14.068	38.575	2'13.522 P	163.6	12:46:30.039

23° 35 A. TRIGLIA (1'48.916)								
Lap	Seg. 1	Seg. 2	Seg. 3	Seg. 4	Seg. 5	Lap Time	km/h	Local Time
1	24.728	33.898	15.046	15.581	30.276	1'52.334	170.1	12:17:02.913
2	24.519	30.328	14.644	13.717	28.549	1'51.757	172.0	12:20:47.004
3	24.387	30.059	14.530	13.915	28.178	1'51.069	176.2	12:22:38.073
4	24.566	30.849	14.167	13.239	28.513	1'51.334	174.2	12:24:29.407
5	24.560	30.077	14.637	13.999	28.692	1'51.965	175.6	12:26:21.372
6	24.288	29.829	14.253	13.629	28.628	1'50.627	174.2	12:28:11.979
7	24.096	29.532	14.377	13.511	28.284	1'49.800	171.4	12:30:01.799
8	25.119	30.455	14.363	13.467	33.210	1'56.614 P	171.2	12:31:58.413
9	1'34.292	33.489	18.869	15.805	28.543	3'10.998 P	124.4	12:35:09.411
10	24.149	29.314	14.176	13.469	27.808	1'48.916	172.5	12:36:58.327
11	24.130	29.898	14.115	13.278	28.444	1'49.865	173.4	12:38:48.192
12	24.051	29.381	14.212	13.295	28.118	1'49.057	171.2	12:40:37.249
13	24.801	30.667	14.955	13.273	28.338	1'52.034	169.5	12:42:29.283
14	23.973	29.565	14.137	13.405	28.107	1'49.187	174.2	12:44:18.470
15	24.091	29.904	14.390	13.473	28.389	1'50.247	174.5	12:46:08.717

24° 9 R. DOORAKKERS (1'49.100)								
Lap	Seg. 1	Seg. 2	Seg. 3	Seg. 4	Seg. 5	Lap Time	km/h	Local Time
1	25.149	31.639	14.541	14.124	29.420	1'54.873	173.4	12:19:01.429
2	24.832	30.866	14.230	13.993	32.876	1'56.797 P	173.6	12:20:58.226
3	1'54.062	31.756	14.328	14.176	29.492	3'23.814 P	172.8	12:24:22.040
4	24.697	30.486	14.349	13.493	28.690	1'51.715	170.6	12:26:13.755
5	24.524	30.248	13.973	13.472	28.617	1'50.834	178.2	12:28:04.589
6	24.363	30.019	13.963	13.207	28.530	1'50.082	173.4	12:29:54.671
7	24.317	30.335	14.227	13.324	28.708	1'50.911	171.4	12:31:45.582
8	24.910	30.371	14.121	13.592	28.651	1'51.645	175.9	12:33:37.227
9	24.708	30.343	14.187	13.295	28.771	1'51.304	169.8	12:35:28.314
10	24.958	30.441	14.395	13.533	29.456	1'52.783	173.1	12:37:21.311
11	24.232	30.083	14.180	13.410	28.690	1'50.595	172.0	12:39:11.909
12	24.218	29.545	14.218	13.275	28.632	1'49.888	174.8	12:41:01.797
13	24.354	29.844	14.157	13.559	29.234	1'51.148	170.1	



## UK Round, 26-27-28 May 2017

### World Supersport 300 - Chronological Analysis Free Practice 1st Session

Lap	Seg. 1	Seg. 2	Seg. 3	Seg. 4	Seg. 5	Lap Time	km/h	Local Time
10	24.692	30.523	14.191	13.330	28.442	1'51.178	170.6	12:35'34.799
11	24.898	31.114	14.787	13.630	32.134	1'56.563 P	167.4	12:37'31.362
12	2'03.781	30.302	14.416	13.444	28.731	3'30.674 P	170.1	12:41'02.036
13	24.419	29.801	14.038	13.512	28.444	1'50.214	174.2	12:42'52.250
14	24.521	30.230	14.246	13.335	28.428	1'50.760	170.3	12:44'43.010
15	24.427	29.948	14.330	13.278	28.406	1'50.389	170.6	12:46'33.399

27° 62 J. SCHULTZ (1'50.543)								
Lap	Seg. 1	Seg. 2	Seg. 3	Seg. 4	Seg. 5	Lap Time	km/h	Local Time
1	25.240	31.092	14.273	13.941	29.964	1'54.510	179.4	12:18'59.843
2	24.858	30.237	14.167	13.736	29.004	1'52.002	176.8	12:20'51.845
3	24.555	30.061	14.157	13.989	29.352	1'52.114	175.0	12:22'43.959
4	24.627	29.989	14.170	13.364	29.298	1'51.448	177.3	12:24'35.407
5	24.577	29.799	14.166	13.478	29.029	1'51.049	178.5	12:26'26.456
6	24.313	30.652	14.510	13.464	28.907	1'51.846	173.4	12:28'18.302
7	24.524	29.774	14.205	13.466	28.776	1'50.745	174.2	12:30'09.477
8	24.876	32.194	15.369	14.457	34.237	2'01.133 P	160.5	12:32'10.180
9	4'10.988	31.320	14.468	13.753	29.240	5'39.769 P	170.9	12:37'49.949
10	24.567	30.504	14.312	13.594	28.835	1'51.812	170.9	12:39'41.761
11	24.563	30.385	14.370	13.674	28.647	1'51.639	170.9	12:41'33.400
12	24.462	30.087	14.095	13.403	28.537	1'50.584	172.5	12:43'23.984
13	24.466	29.975	14.086	13.466	28.550	1'50.543	171.4	12:45'14.527

28° 121 K. PATOVA (1'50.672)								
Lap	Seg. 1	Seg. 2	Seg. 3	Seg. 4	Seg. 5	Lap Time	km/h	Local Time
1	27.025	33.724	15.243	14.268	30.472	2'00.732	168.0	12:19'40.802
2	25.384	32.297	14.832	14.016	29.825	1'56.354	171.4	12:21'37.156
3	25.486	32.627	15.377	14.017	29.758	1'57.265	171.2	12:23'34.821
4	24.962	32.276	14.912	13.947	29.307	1'55.404	170.9	12:25'29.825
5	24.607	32.193	14.672	13.650	29.378	1'54.500	171.7	12:27'24.325
6	24.977	31.592	14.691	13.664	29.362	1'54.286	171.4	12:29'18.611
7	24.575	31.093	14.627	13.774	28.941	1'53.010	173.9	12:31'11.621
8	24.704	30.936	14.459	13.534	28.804	1'52.437	175.0	12:33'04.058
9	24.651	30.797	14.406	13.754	28.856	1'52.464	174.5	12:34'56.522
10	24.825	30.204	14.527	13.455	28.728	1'51.739	175.9	12:36'48.261
11	24.738	30.384	14.555	13.699	28.815	1'52.191	173.6	12:38'40.452
12	24.447	30.920	14.548	13.461	29.286	1'52.662	173.4	12:40'33.114
13	24.718	31.107	14.698	13.808	29.027	1'53.358	173.4	12:42'26.472
14	24.279	30.463	14.645	13.402	28.457	1'51.246	181.2	12:44'17.718
15	24.173	30.321	14.387	13.422	28.369	1'50.672	177.9	12:46'08.390

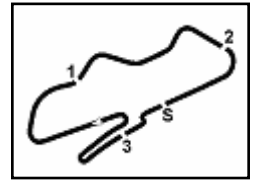
29° 130 R. FERREIRA (1'50.819)								
Lap	Seg. 1	Seg. 2	Seg. 3	Seg. 4	Seg. 5	Lap Time	km/h	Local Time
1	26.261	34.673	15.696	14.893	31.346	1'70.3	12:17'20.033	
2	25.607	31.343	14.889	14.161	30.045	1'56.045	170.3	12:21'14.891
3	24.952	30.910	14.576	13.880	29.179	1'53.497	173.1	12:23'08.388
4	25.204	31.302	15.215	14.260	29.051	1'55.032	172.0	12:25'03.420
5	25.917	30.357	14.536	13.456	28.698	1'52.964	172.0	12:26'56.384
6	24.417	30.553	14.759	13.920	28.932	1'52.581	175.9	12:28'48.965
7	24.332	30.828	14.777	13.584	28.442	1'51.963	177.9	12:30'40.928
8	24.713	30.723	14.427	13.441	28.633	1'51.937	172.2	12:32'32.865
9	24.623	30.833	14.559	13.677	28.623	1'52.315	170.6	12:34'25.180
10	24.578	30.806	14.640	13.704	28.692	1'52.420	169.5	12:36'17.600
11	28.947	31.716	17.681	17.657	32.871	2'08.872	131.2	12:38'26.472
12	30.656	37.498	15.060	13.641	29.754	2'06.609	166.2	12:40'33.081
13	25.002	31.207	14.724	13.513	28.412	1'52.858	172.8	12:42'25.939
14	24.500	30.478	14.510	13.166	28.555	1'51.209	174.8	12:44'17.148
15	24.381	30.510	14.301	13.363	28.264	1'50.819	172.0	12:46'07.967

30° 21 A. BIDDLE (1'51.199)								
Lap	Seg. 1	Seg. 2	Seg. 3	Seg. 4	Seg. 5	Lap Time	km/h	Local Time
1	24.512	31.598	14.913	14.470	30.162	1'77.6	12:17'04.550	
2	24.437	30.872	14.434	13.684	28.730	1'52.157	173.1	12:20'50.688
3	24.431	30.634	14.521	13.712	28.872	1'52.170	174.5	12:22'42.858
4	24.275	30.354	14.247	13.495	28.828	1'51.199	178.5	12:24'34.057
5	24.464	30.315	14.488	13.900	28.446	1'51.613	175.0	12:26'25.670
6	24.278	30.618	14.596	13.674	28.840	1'52.006	171.4	12:28'17.676
7	24.343	29.918	14.359	13.669	29.284	1'51.573	175.9	12:30'09.249
8	24.903	31.641	14.839	14.366	34.213	1'59.962 P	174.5	12:32'09.211
9	3'28.349	31.137	14.360	13.581	28.767	4'56.194 P	175.9	12:37'05.405
10	24.384	30.592	14.562	13.486	28.392	1'51.416	173.9	12:38'56.821
11	24.370	30.425	14.620	13.726	28.658	1'51.799	172.5	12:40'48.620
12	24.308	30.745	14.618	13.619	28.706	1'51.996	172.8	12:42'40.616
13	24.633	30.751	14.484	13.528	28.440	1'51.836	173.4	12:44'32.452
14	24.101	30.224	14.587	13.713	28.869	1'51.494	172.5	12:46'23.946

31° 53 V. GRIMOUX (1'51.516)								
Lap	Seg. 1	Seg. 2	Seg. 3	Seg. 4	Seg. 5	Lap Time	km/h	Local Time
1	26.583	35.989	15.844	15.449	31.092	1'58.453	163.6	12:17'27.938
2	25.875	32.768	15.201	14.103	29.798	1'56.650	165.6	12:19'26.391
3	25.448	31.696	14.947	13.998	29.230	1'55.319	167.7	12:23'18.360
4	25.287	31.373	14.936	13.973	29.080	1'54.649	166.2	12:25'13.009
5	25.282	31.216	14.835	13.993	29.351	1'54.677	165.4	12:27'07.686
6	25.044	30.810	14.832	13.864	28.826	1'53.376	165.1	12:29'01.062
7	24.860	31.309	14.587	13.992	29.020	1'53.768	167.7	12:30'54.830
8	24.939	31.363	14.749	13.770	29.225	1'54.046	166.9	12:32'48.876
9	25.056	31.773	15.247	13.973	29.080	1'54.649	163.4	12:34'55.808
10	2'30.511	30.573	14.492	13.838	28.872	3'58.286 P	167.4	12:38'55.808
11	24.704	30.506	14.463	13.737	28.902	1'52.312	167.2	12:40'48.120
12	24.711	31.028	14.814	13.900	28.756	1'53.209	169.8	12:42'41.329
13	24.621	30.829	14.512	13.960	28.870	1'52.792	169.0	12:44'34.121
14	24.600	30.076	14.276	13.897	28.667	1'51.516	170.6	12:46'25.637

32° 26 L. HOPKINS (1'51.804)								
Lap	Seg. 1	Seg. 2	Seg. 3	Seg. 4	Seg. 5	Lap Time	km/h	Local Time
1	25.444	35.120	15.683	14.560	31.727	1'56.718	179.4	12:19'14.475
2	25.328	32.395	14.796	13.876	30.373	1'56.718	179.4	12:19'14.475
3	1'44.572	31.633	14.632	13.835	30.173	3'14.845 P	177.3	12:24'42.291
4	25.060	31.649	14.673	13.974	29.706	1'55.062	174.8	12:26'37.353
5	24.718	31.354	14.609	13.972	29.483	1'54.136	173.4	12:28'31.489
6	24.459	31.169	14.546	14.326	29.731	1'54.231	174.2	12:30'25.720
7	24.583	31.244	14.463	13.778	29.171	1'53.239	174.5	12:32'18.959
8	24.658	31.339	14.447	13.805	29.709	1'53.958	175.3	12:34'12.917
9	24.592	30.876	14.410	13.909	29.141	1'52.928	174.2	12:36'05.845
10	24.350	30.493	14.536	13.680	28.745	1'51.804	175.0	12:37'57.649
11	25.938	30.497	14.246	13.674	29.005	1'53.360	176.2	12:39'51.009
12	24.611	30.805	14.527	13.852	29.133	1'52.928	173.1	12:41'43.937
13	24.509	30.875	14.270	13.427	28.780	1'51.861	176.2	12:43'35.798
14	24.346	30.292	14.364	13.526	29.871	1'52.399	174.8	12:45'28.197

|--|--|--|--|--|--|--|--|--|



## UK Round, 26-27-28 May 2017

### World Supersport 300 - Chronological Analysis Free Practice 1st Session

3	25.843	32.451	14.960	14.101	29.557	1'56.912	<b>173.6</b>	12:23'10.055
4	25.529	32.074	15.031	14.036	29.581	1'56.251	<b>170.6</b>	12:25'06.306
5	25.409	31.473	<b>14.608</b>	13.937	29.622	1'55.049	<b>172.2</b>	12:27'01.355
6	25.458	32.407	15.503	14.345	30.289	1'58.002	<b>169.3</b>	12:28'59.357
7	25.646	33.145	15.082	14.231	29.419	1'57.523	<b>172.8</b>	12:30'56.880
8	26.132	31.935	15.091	14.375	29.865	1'57.398	<b>171.7</b>	12:32'54.278
9	25.687	31.835	14.902	14.321	30.199	1'56.944	<b>171.4</b>	12:34'51.222
10	24.795	31.697	15.132	14.049	29.959	1'55.632	<b>173.9</b>	12:36'46.854
11	25.210	31.343	15.048	13.884	29.483	1'54.968	<b>172.5</b>	12:38'41.822
12	24.989	30.878	14.876	<b>13.794</b>	<b>29.036</b>	1'53.573	<b>170.9</b>	12:40'35.395
13	24.800	31.275	14.826	14.197	29.866	1'54.964	<b>176.5</b>	12:42'30.359
14	24.855	30.760	15.610	14.268	29.243	1'54.736	<b>173.4</b>	12:44'25.095
15	<b>24.522</b>	<b>30.523</b>	14.855	13.953	29.343	<b>1'53.196</b>	<b>174.8</b>	12:46'18.291

#### 36° 64 A. PAK (1'53.743)

Lap	Seg. 1	Seg. 2	Seg. 3	Seg. 4	Seg. 5	Lap Time	km/h	Local Time
1	27.765	37.487	16.698	16.700	33.502	2'03.553	<b>145.6</b>	12:18'26.113
2	26.562	33.868	15.384	15.061	31.475	2'00.144	<b>168.2</b>	12:20'29.666
3	26.106	32.965	14.972	14.621	31.024	1'57.687	<b>169.0</b>	12:22'29.810
4	26.106	32.104	14.903	14.231	30.343	1'57.687	<b>170.9</b>	12:24'27.497
5	25.460	31.681	14.835	14.276	30.317	1'56.569	<b>174.8</b>	12:26'24.066
6	25.765	31.473	14.568	14.313	29.897	1'56.016	<b>173.9</b>	12:28'20.082
7	25.343	31.274	14.717	14.292	29.977	1'55.603	<b>171.2</b>	12:30'15.685
8	25.379	31.510	14.679	14.034	29.733	1'55.335	<b>171.7</b>	12:32'11.020
9	25.490	31.522	14.634	14.184	29.641	1'55.471	<b>170.6</b>	12:34'06.491
10	25.279	31.405	14.673	14.264	30.490	1'56.111	<b>169.3</b>	12:36'02.602
11	25.249	31.099	14.828	14.034	29.500	1'54.710	<b>169.3</b>	12:37'57.312
12	25.099	30.809	14.595	13.914	29.935	1'54.352	<b>170.9</b>	12:39'51.664
13	25.299	30.663	14.657	14.033	<b>29.499</b>	1'54.151	<b>170.3</b>	12:41'45.815
14	<b>25.029</b>	<b>30.636</b>	14.492	<b>13.761</b>	29.825	<b>1'53.743</b>	<b>171.7</b>	12:43'39.558
15	25.282	30.759	<b>14.477</b>	13.802	29.532	1'53.852	<b>170.6</b>	12:45'33.410

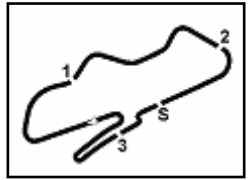
26/05/2017

P = Pits In/Out - C = Lap-Time Cancelled

These data/results cannot be reproduced, stored and/or transmitted in whole or in part by any manner of electronic, mechanical, photocopying, recording, broadcasting or otherwise now known or herein after developed without the previous express consent by the copyright owner, except for reproduction in daily press and regular printed publications on sale to the public within 60 days of the event related to those data/results and always provided that copyright symbol appears together as follows below.

© DORNA WSBK ORGANIZATION Srl 2017





Donington Park 4.023 m

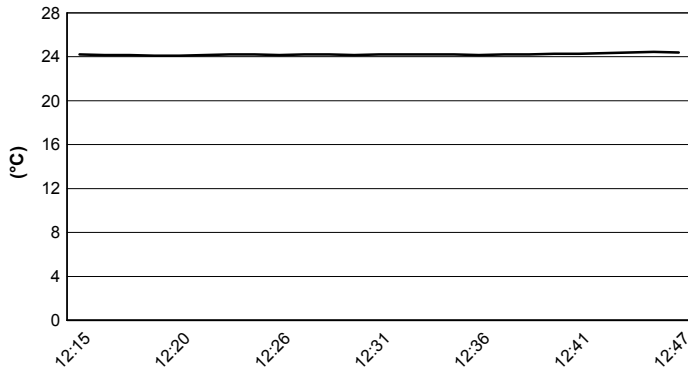
**UK Round, 26-27-28 May 2017**

**World Supersport 300 - Weather Report Free Practice 1st Session**

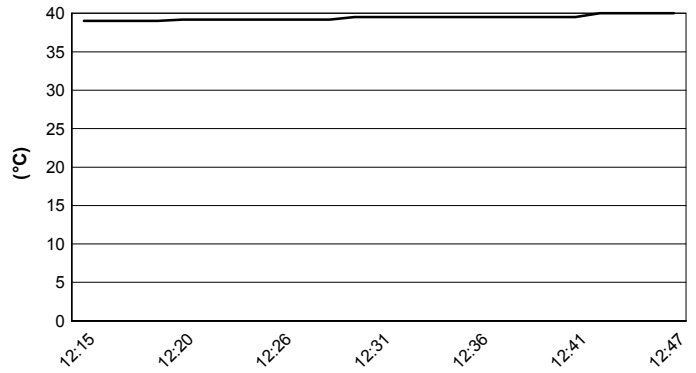
Session started 12:15

Session ended 12:47

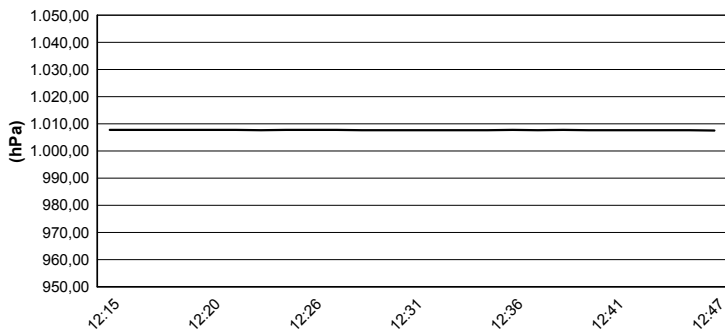
### Air Temperature



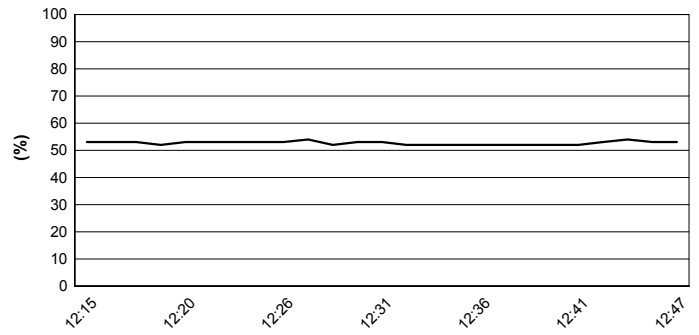
### Track Temperature



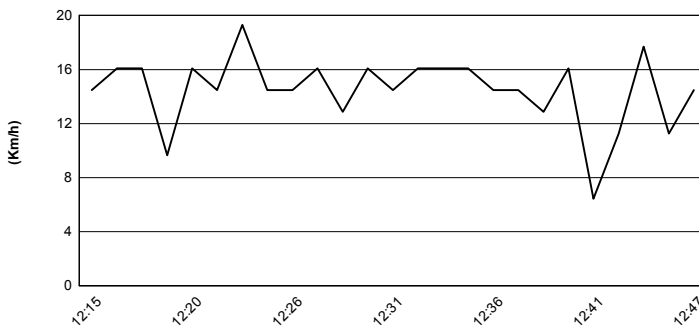
### Air Pressure



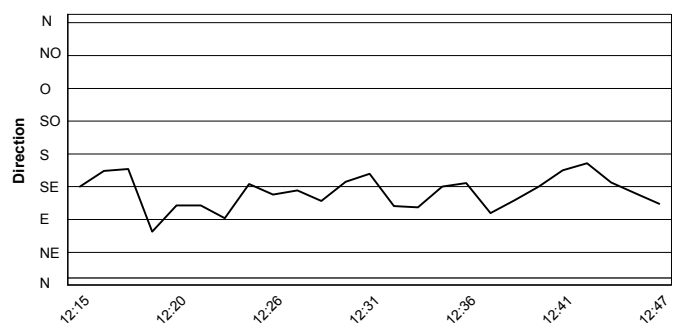
### Humidity



### Wind Speed



### Wind Direction



26/05/2017

These data/results cannot be reproduced, stored and/or transmitted in whole or in part by any manner of electronic, mechanical, photocopying, recording, broadcasting or otherwise now known or herein after developed without the previous express consent by the copyright owner, except for reproduction in daily press and regular printed publications on sale to the public within 60 days of the event related to those data/results and always provided that copyright symbol appears together as follows below.

© DORNA WSBK ORGANIZATION Srl 2017

