

Donington Park 4.023 m

1 / 2

## UK Round, 26-27-28 May 2017

### World Supersport 300 - Results Superpole 1

No.	Rider	Nat	Team	Bike	Time	Gap	Rel.	Laps	Speed	
									Avg	Max
1*	99 P. GRASSIA	ITA	3570 Made in CIV	Kawasaki Ninja 300	<b>1'47.227</b>			7	135,067	<b>175,3</b>
2*	23 M. BASTIANELLI	ITA	3570 Made in CIV	Kawasaki Ninja 300	<b>1'47.261</b>	0.034	0.034	7	135,024	<b>175,6</b>
3	12 A. RUSMIPUTRO	INA	Pertamina Almeria Racing Team	Yamaha YZF-R3	<b>1'47.293</b>	0.066	0.032	7	134,984	<b>179,7</b>
4	2 A. CARRASCO	ESP	ETG Racing	Kawasaki Ninja 300	<b>1'47.449</b>	0.222	0.156	8	134,788	<b>179,7</b>
5	28 P. GIACOMINI	ITA	Terra e Moto	Yamaha YZF-R3	<b>1'47.734</b>	0.507	0.285	8	134,431	<b>173,6</b>
6	18 A. MURLEY	GBR	Team Toth	Yamaha YZF-R3	<b>1'47.742</b>	0.515	0.008	8	134,421	<b>177,9</b>
7	33 D. VALLE	ESP	Halcourier Racing	Yamaha YZF-R3	<b>1'47.777</b>	0.550	0.035	7	134,377	<b>178,5</b>
8	84 M. CARBONERA	ITA	SK Racing	Yamaha YZF-R3	<b>1'48.274</b>	1.047	0.497	7	133,761	<b>176,2</b>
9	14 E. DE LA VEGA	FRA	GRT Yamaha WorldSSP300 Team	Yamaha YZF-R3	<b>1'48.590</b>	1.363	0.316	7	133,371	<b>175,3</b>
10	27 F. ROVELLI	ITA	ParkinGO DS Junior Team	Yamaha YZF-R3	<b>1'48.591</b>	1.364	0.001	7	133,370	<b>175,6</b>
11	80 A. PONTONE	ITA	IODARacing	Yamaha YZF-R3	<b>1'48.614</b>	1.387	0.023	7	133,342	<b>176,8</b>
12	87 A. LICCIARDI	BEL	Team Trasimeno	Yamaha YZF-R3	<b>1'48.657</b>	1.430	0.043	7	133,289	<b>172,5</b>
13	13 J. FACCO	ITA	Bierreti By 2R	Yamaha YZF-R3	<b>1'48.742</b>	1.515	0.085	7	133,185	<b>175,0</b>
14	17 G. NODERER	GER	Scuderia Maranga Racing	Honda CBR500R	<b>1'48.787</b>	1.560	0.045	4	133,130	<b>175,0</b>
15	35 A. TRIGLIA	ITA	Scuderia Maranga Racing	Honda CBR500R	<b>1'48.943</b>	1.716	0.156	7	132,939	<b>176,2</b>
16	9 R. DOORAKKERS	NED	MVR Racing	Yamaha YZF-R3	<b>1'49.302</b>	2.075	0.359	8	132,503	<b>171,4</b>
17	62 J. SCHULTZ	RSA	DDM by BWG_Bike & Motor RT_Grimaldi	Kawasaki Ninja 300	<b>1'49.348</b>	2.121	0.046	8	132,447	<b>173,1</b>
18	130 R. FERREIRA	BRA	Kallio Racing	Yamaha YZF-R3	<b>1'49.623</b>	2.396	0.275	8	132,115	<b>174,8</b>
19	64 A. PAK	TUR	Kawasaki Puccetti Racing	Kawasaki Ninja 300	<b>1'49.919</b>	2.692	0.296	7	131,759	<b>173,6</b>
20	121 K. PATOVA	FIN	Kallio Racing	Yamaha YZF-R3	<b>1'50.257</b>	3.030	0.338	3	131,355	<b>174,2</b>
21	21 A. BIDDLE	NZL	Sourz Foods - Benjan Racing	Kawasaki Ninja 300	<b>1'50.394</b>	3.167	0.137	3	131,192	<b>174,8</b>
22	7 N. SETTIMO	ITA	Bierreti By 2R	Yamaha YZF-R3	<b>1'50.837</b>	3.610	0.443	7	130,668	<b>175,0</b>
23	26 L. HOPKINS	GBR	Hopkins Racing	Kawasaki Ninja 300	<b>1'50.919</b>	3.692	0.082	7	130,571	<b>175,9</b>
24	53 V. GRIMOUX	FRA	Team Toth	Yamaha YZF-R3	<b>1'51.020</b>	3.793	0.101	7	130,452	<b>168,2</b>
25	19 E. ROVELLI	ITA	ParkinGO DS Junior Team	Yamaha YZF-R3	<b>1'51.940</b>	4.713	0.920	4	129,380	<b>169,3</b>
26	11 N. CUPAIOLI	ITA	3ENNE#Racing	Yamaha YZF-R3	<b>1'52.587</b>	5.360	0.647	7	128,637	<b>172,0</b>

\* Qualified to Superpole 2

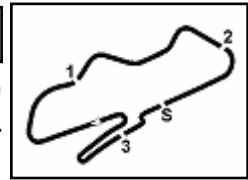
AIR	Humidity:	69%	Temp:	21°C
TRACK	Condition:	Dry	Temp:	32°C

27/05/2017 Start 13:00 End 13:16 The results are provisional until the end of the time limit for protests and appeals and the completion of the technical checks.

These data/results cannot be reproduced, stored and/or transmitted in whole or in part by any manner of electronic, mechanical, photocopying, recording, broadcasting or otherwise now known or herein after developed without the previous express consent by the copyright owner, except for reproduction in daily press and regular printed publications on sale to the public within 60 days of the event related to those data/results and always provided that copyright symbol appears together as follows below.

© DORNA WSBK ORGANIZATION Srl 2017





**UK Round, 26-27-28 May 2017**  
**World Supersport 300 - Results Superpole 1**

**Session Highlights**

Local Time	No. Rider	Description
13.00.00		Start
13.08.53	19 E. ROVELLI	Crashed - Turn 7
13.08.54	21 A. BIDDLE	Crashed - Turn 7
13.08.55	121 K. PATOVA	Crashed - Turn 7
13.10.20	19 E. ROVELLI	Re-joined
13.10.37	17 G. NODERER	Crashed - Turn 8
13.13.22	12 A. RUSMIPUTRO	Lap Cancelled - Exceeded Track Limits 10
13.16.54		End Of Session

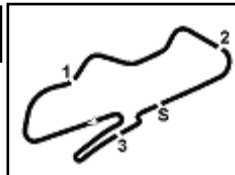
**Fastest Laps Sequence**

No.	Rider	Nat	Team	Bike	Local Time	Time	Gap	Avg
18	A. MURLEY	GBR	Team Toth	Yamaha YZF-R3	13:03'52.248	<b>1'49.936</b>		131,738
27	F. ROVELLI	ITA	ParkinGO DS Junior Team	Yamaha YZF-R3	13:03'53.242	<b>1'49.117</b>	-0.819	132,727
18	A. MURLEY	GBR	Team Toth	Yamaha YZF-R3	13:05'41.323	<b>1'49.075</b>	-0.042	132,778
17	G. NODERER	GER	Scuderia Maranga Racing	Honda CBR500R	13:05'41.389	<b>1'48.877</b>	-0.198	133,020
23	M. BASTIANELLI	ITA	3570 Made in CIV	Kawasaki Ninja 300	13:05'54.127	<b>1'48.571</b>	-0.306	133,395
99	P. GRASSIA	ITA	3570 Made in CIV	Kawasaki Ninja 300	13:06'04.030	<b>1'48.561</b>	-0.010	133,407
99	P. GRASSIA	ITA	3570 Made in CIV	Kawasaki Ninja 300	13:07'51.518	<b>1'47.488</b>	-1.073	134,739
12	A. RUSMIPUTRO	INA	Pertamina Almeria Racing Team	Yamaha YZF-R3	13:09'39.824	<b>1'47.293</b>	-0.195	134,984
99	P. GRASSIA	ITA	3570 Made in CIV	Kawasaki Ninja 300	13:13'31.873	<b>1'47.227</b>	-0.066	135,067

Start 27/05/2017 13:00 End 13:16 The results are provisional until the end of the time limit for protests and appeals and the completion of the technical checks.

These data/results cannot be reproduced, stored and/or transmitted in whole or in part by any manner of electronic, mechanical, photocopying, recording, broadcasting or otherwise now known or herein after developed without the previous express consent by the copyright owner, except for reproduction in daily press and regular printed publications on sale to the public within 60 days of the event related to those data/results and always provided that copyright symbol appears together as follows below.  
© DORNA WSBK ORGANIZATION Srl 2017





## UK Round, 26-27-28 May 2017

### World Supersport 300 - Best Sector & Speed Superpole 1

Donington Park 4.023 m

#### BEST LAP

1	99 P. GRASSIA	Kawasaki Ninja 300	1'47.227
2	23 M. BASTIANELLI	Kawasaki Ninja 300	1'47.261
3	12 A. RUSMIPUTRO	Yamaha YZF-R3	1'47.293
4	2 A. CARRASCO	Kawasaki Ninja 300	1'47.449
5	28 P. GIACOMINI	Yamaha YZF-R3	1'47.734
6	18 A. MURLEY	Yamaha YZF-R3	1'47.742
7	33 D. VALLE	Yamaha YZF-R3	1'47.777
8	84 M. CARBONERA	Yamaha YZF-R3	1'48.274
9	14 E. DE LA VEGA	Yamaha YZF-R3	1'48.590
10	27 F. ROVELLI	Yamaha YZF-R3	1'48.591
11	80 A. PONTONE	Yamaha YZF-R3	1'48.614
12	87 A. LICCIARDI	Yamaha YZF-R3	1'48.657
13	13 J. FACCO	Yamaha YZF-R3	1'48.742
14	17 G. NODERER	Honda CBR500R	1'48.787
15	35 A. TRIGLIA	Honda CBR500R	1'48.943
16	9 R. DOORAKKERS	Yamaha YZF-R3	1'49.302
17	62 J. SCHULTZ	Kawasaki Ninja 300	1'49.348
18	130 R. FERREIRA	Yamaha YZF-R3	1'49.623
19	64 A. PAK	Kawasaki Ninja 300	1'49.919
20	121 K. PATOVA	Yamaha YZF-R3	1'50.257
21	21 A. BIDDLE	Kawasaki Ninja 300	1'50.394
22	7 N. SETTIMO	Yamaha YZF-R3	1'50.837
23	26 L. HOPKINS	Kawasaki Ninja 300	1'50.919
24	53 V. GRIMOUX	Yamaha YZF-R3	1'51.020
25	19 E. ROVELLI	Yamaha YZF-R3	1'51.940
26	11 N. CUPAIOLI	Yamaha YZF-R3	1'52.587

#### SPEED

1	2 A. CARRASCO	Kawasaki Ninja 300	179.7
2	12 A. RUSMIPUTRO	Yamaha YZF-R3	179.7
3	33 D. VALLE	Yamaha YZF-R3	178.5
4	18 A. MURLEY	Yamaha YZF-R3	177.9
5	80 A. PONTONE	Yamaha YZF-R3	176.8
6	84 M. CARBONERA	Yamaha YZF-R3	176.2
7	35 A. TRIGLIA	Honda CBR500R	176.2
8	26 L. HOPKINS	Kawasaki Ninja 300	175.9
9	23 M. BASTIANELLI	Kawasaki Ninja 300	175.6
10	27 F. ROVELLI	Yamaha YZF-R3	175.6
11	99 P. GRASSIA	Kawasaki Ninja 300	175.3
12	14 E. DE LA VEGA	Yamaha YZF-R3	175.3
13	7 N. SETTIMO	Yamaha YZF-R3	175.0
14	13 J. FACCO	Yamaha YZF-R3	175.0
15	17 G. NODERER	Honda CBR500R	175.0
16	21 A. BIDDLE	Kawasaki Ninja 300	174.8
17	130 R. FERREIRA	Yamaha YZF-R3	174.8
18	121 K. PATOVA	Yamaha YZF-R3	174.2
19	64 A. PAK	Kawasaki Ninja 300	173.6
20	28 P. GIACOMINI	Yamaha YZF-R3	173.6
21	62 J. SCHULTZ	Kawasaki Ninja 300	173.1
22	87 A. LICCIARDI	Yamaha YZF-R3	172.5
23	11 N. CUPAIOLI	Yamaha YZF-R3	172.0
24	9 R. DOORAKKERS	Yamaha YZF-R3	171.4
25	19 E. ROVELLI	Yamaha YZF-R3	169.3
26	53 V. GRIMOUX	Yamaha YZF-R3	168.2

#### SEG. 1

1	12 A. RUSMIPUTRO	23.264
2	14 E. DE LA VEGA	23.506
3	33 D. VALLE	23.513
4	99 P. GRASSIA	23.515
5	2 A. CARRASCO	23.575
6	13 J. FACCO	23.609
7	28 P. GIACOMINI	23.682
8	130 R. FERREIRA	23.713
9	27 F. ROVELLI	23.729
10	35 A. TRIGLIA	23.734
11	21 A. BIDDLE	23.754
12	19 E. ROVELLI	23.792
13	18 A. MURLEY	23.824
14	87 A. LICCIARDI	23.832
15	23 M. BASTIANELLI	23.842
16	84 M. CARBONERA	23.870
17	80 A. PONTONE	23.895
18	62 J. SCHULTZ	23.983
19	17 G. NODERER	24.000
20	26 L. HOPKINS	24.028
21	9 R. DOORAKKER	24.034
22	7 N. SETTIMO	24.118
23	64 A. PAK	24.193
24	11 N. CUPAIOLI	24.249
25	121 K. PATOVA	24.303
26	53 V. GRIMOUX	24.333

#### SEG. 2

1	23 M. BASTIANELLI	28.710
2	99 P. GRASSIA	28.712
3	2 A. CARRASCO	28.869
4	14 E. DE LA VEGA	28.888
5	80 A. PONTONE	28.966
6	35 A. TRIGLIA	28.974
7	84 M. CARBONERA	28.988
8	9 R. DOORAKKER	29.030
9	12 A. RUSMIPUTRO	29.054
10	33 D. VALLE	29.110
11	17 G. NODERER	29.128
12	18 A. MURLEY	29.130
13	28 P. GIACOMINI	29.137
14	62 J. SCHULTZ	29.177
15	27 F. ROVELLI	29.244
16	87 A. LICCIARDI	29.268
17	13 J. FACCO	29.285
18	130 R. FERREIRA	29.498
19	64 A. PAK	29.508
20	7 N. SETTIMO	29.569
21	121 K. PATOVA	29.621
22	53 V. GRIMOUX	29.904
23	26 L. HOPKINS	29.999
24	21 A. BIDDLE	30.019
25	19 E. ROVELLI	30.065
26	11 N. CUPAIOLI	30.444

#### SEG. 3

1	12 A. RUSMIPUTRO	13.912
2	99 P. GRASSIA	14.004
3	14 E. DE LA VEGA	14.027
4	2 A. CARRASCO	14.039
5	18 A. MURLEY	14.047
6	23 M. BASTIANELLI	14.047
7	84 M. CARBONERA	14.060
8	13 J. FACCO	14.061
9	80 A. PONTONE	14.063
10	62 J. SCHULTZ	14.081
11	64 A. PAK	14.089
12	17 G. NODERER	14.112
13	27 F. ROVELLI	14.132
14	9 R. DOORAKKER	14.148
15	28 P. GIACOMINI	14.165
16	87 A. LICCIARDI	14.167
17	33 D. VALLE	14.198
18	35 A. TRIGLIA	14.212
19	26 L. HOPKINS	14.244
20	130 R. FERREIRA	14.246
21	21 A. BIDDLE	14.267
22	53 V. GRIMOUX	14.288
23	121 K. PATOVA	14.318
24	19 E. ROVELLI	14.459
25	7 N. SETTIMO	14.496
26	11 N. CUPAIOLI	14.623

#### SEG. 4

1	28 P. GIACOMINI	12.921
2	18 A. MURLEY	13.033
3	13 J. FACCO	13.039
4	33 D. VALLE	13.061
5	35 A. TRIGLIA	13.100
6	12 A. RUSMIPUTRO	13.108
7	14 E. DE LA VEGA	13.120
8	23 M. BASTIANELLI	13.130
9	99 P. GRASSIA	13.133
10	62 J. SCHULTZ	13.184
11	2 A. CARRASCO	13.195
12	84 M. CARBONERA	13.206
13	17 G. NODERER	13.216
14	27 F. ROVELLI	13.269
15	87 A. LICCIARDI	13.307
16	130 R. FERREIRA	13.320
17	7 N. SETTIMO	13.343
18	121 K. PATOVA	13.349
19	9 R. DOORAKKER	13.369
20	80 A. PONTONE	13.438
21	64 A. PAK	13.495
22	26 L. HOPKINS	13.528
23	21 A. BIDDLE	13.645
24	53 V. GRIMOUX	13.654
25	11 N. CUPAIOLI	13.840
26	19 E. ROVELLI	13.891

#### SEG. 5

1	28 P. GIACOMINI	27.318
2	99 P. GRASSIA	27.353
3	12 A. RUSMIPUTRO	27.447
4	23 M. BASTIANELLI	27.505
5	27 F. ROVELLI	27.543
6	18 A. MURLEY	27.549
7	33 D. VALLE	27.634
8	87 A. LICCIARDI	27.762
9	2 A. CARRASCO	27.768
10	84 M. CARBONERA	27.783
11	35 A. TRIGLIA	27.842
12	80 A. PONTONE	27.854
13	14 E. DE LA VEGA	27.933
14	17 G. NODERER	27.938
15	7 N. SETTIMO	28.033
16	13 J. FACCO	28.098
17	130 R. FERREIRA	28.129
18	62 J. SCHULTZ	28.158
19	9 R. DOORAKKER	28.247
20	121 K. PATOVA	28.279
21	21 A. BIDDLE	28.308
22	53 V. GRIMOUX	28.348
23	26 L. HOPKINS	28.404
24	64 A. PAK	28.507
25	19 E. ROVELLI	28.795
26	11 N. CUPAIOLI	28.863

27/05/2017

These data/results cannot be reproduced, stored and/or transmitted in whole or in part by any manner of electronic, mechanical, photocopying, recording, broadcasting or otherwise now known or herein after developed without the previous express consent by the copyright owner, except for reproduction in daily press and regular printed publications on sale to the public within 60 days of the event related to those data/results and always provided that copyright symbol appears together as follows below.

© DORNA WSBK ORGANIZATION Srl 2017

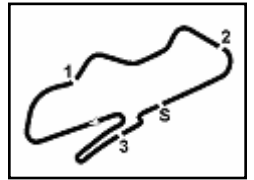
FICR PERUGIA TIMING



Official Tyre Supplier



Official Timekeeper



## UK Round, 26-27-28 May 2017

### World Supersport 300 - Ideal Times Superpole 1

Donington Park 4.023 m

No.	Rider	Nat	Bike	Seg. 1	Seg. 2	Seg. 3	Seg. 4	Seg. 5	Ideal Time		
				Diff. 1	Diff. 2	Diff. 3	Diff. 4	Diff. 5	Best Lap	Pos.	Diff.
1	99 P. GRASSIA	ITA	Kawasaki Ninja 300	23.515 0.442	28.712	14.004	13.133 0.052	27.353 0.016	<b>1'46.717</b> 1'47.227	1	0.510
2	12 A. RUSMIPUTRO	INA	Yamaha YZF-R3	<b>23.264</b> 0.422	29.054	<b>13.912</b>	13.108 0.086	27.447	<b>1'46.785</b> 1'47.293	3	0.508
3	28 P. GIACOMINI	ITA	Yamaha YZF-R3	23.682 0.092	29.137 0.262	14.165 0.060	<b>12.921</b> 0.097	<b>27.318</b>	<b>1'47.223</b> 1'47.734	5	0.511
4	23 M. BASTIANELLI	ITA	Kawasaki Ninja 300	23.842 0.027	<b>28.710</b>	14.047	13.130	27.505	<b>1'47.234</b> 1'47.261	2	0.027
5	2 A. CARRASCO	ESP	Kawasaki Ninja 300	23.575	28.869	14.039 0.003	13.195	27.768	<b>1'47.446</b> 1'47.449	4	0.003
6	14 E. DE LA VEGA	FRA	Yamaha YZF-R3	23.506 0.354	28.888 0.181	14.027 0.269	13.120 0.232	27.933 0.080	<b>1'47.474</b> 1'48.590	9	1.116
7	33 D. VALLE	ESP	Yamaha YZF-R3	23.513	29.110	14.198	13.061 0.261	27.634	<b>1'47.516</b> 1'47.777	7	0.261
8	18 A. MURLEY	GBR	Yamaha YZF-R3	23.824	29.130 0.048	14.047 0.111	13.033	27.549	<b>1'47.583</b> 1'47.742	6	0.159
9	35 A. TRIGLIA	ITA	Honda CBR500R	23.734 0.622	28.974	14.212 0.073	13.100 0.386	27.842	<b>1'47.862</b> 1'48.943	15	1.081
10	84 M. CARBONERA	ITA	Yamaha YZF-R3	23.870 0.156	28.988 0.010	14.060 0.150	13.206 0.021	27.783 0.030	<b>1'47.907</b> 1'48.274	8	0.367
11	27 F. ROVELLI	ITA	Yamaha YZF-R3	23.729	29.244 0.260	14.132 0.238	13.269 0.003	27.543 0.173	<b>1'47.917</b> 1'48.591	10	0.674
12	13 J. FACCO	ITA	Yamaha YZF-R3	23.609 0.282	29.285 0.017	14.061 0.351	13.039	28.098	<b>1'48.092</b> 1'48.742	13	0.650
13	80 A. PONTONE	ITA	Yamaha YZF-R3	23.895	28.966	14.063 0.023	13.438 0.062	27.854 0.313	<b>1'48.216</b> 1'48.614	11	0.398
14	87 A. LICCIARDI	BEL	Yamaha YZF-R3	23.832 0.161	29.268	14.167 0.160	13.307	27.762	<b>1'48.336</b> 1'48.657	12	0.321
15	17 G. NODERER	GER	Honda CBR500R	24.000 0.074	29.128 0.066	14.112	13.216 0.105	27.938 0.148	<b>1'48.394</b> 1'48.787	14	0.393
16	62 J. SCHULTZ	RSA	Kawasaki Ninja 300	23.983 0.203	29.177	14.081 0.539	13.184	28.158 0.023	<b>1'48.583</b> 1'49.348	17	0.765
17	9 R. DOORAKKERS	NED	Yamaha YZF-R3	24.034	29.030	14.148 0.201	13.369 0.179	28.247 0.094	<b>1'48.828</b> 1'49.302	16	0.474
18	130 R. FERREIRA	BRA	Yamaha YZF-R3	23.713 0.388	29.498	14.246 0.278	13.320	28.129 0.051	<b>1'48.906</b> 1'49.623	18	0.717
19	7 N. SETTIMO	ITA	Yamaha YZF-R3	24.118 0.241	29.569 0.466	14.496 0.074	13.343 0.225	28.033 0.272	<b>1'49.559</b> 1'50.837	22	1.278
20	64 A. PAK	TUR	Kawasaki Ninja 300	24.193	29.508 0.018	14.089	13.495 0.109	28.507	<b>1'49.792</b> 1'49.919	19	0.127
21	121 K. PATOVA	FIN	Yamaha YZF-R3	24.303	29.621	14.318 0.029	13.349 0.358	28.279	<b>1'49.870</b> 1'50.257	20	0.387
22	21 A. BIDDLE	NZL	Kawasaki Ninja 300	23.754	30.019 0.022	14.267 0.355	13.645 0.024	28.308	<b>1'49.993</b> 1'50.394	21	0.401
23	26 L. HOPKINS	GBR	Kawasaki Ninja 300	24.028 0.186	29.999 0.032	14.244 0.249	13.528 0.249	28.404	<b>1'50.203</b> 1'50.919	23	0.716
24	53 V. GRIMOUX	FRA	Yamaha YZF-R3	24.333 0.024	29.904 0.070	14.288 0.040	13.654 0.359	28.348	<b>1'50.527</b> 1'51.020	24	0.493
25	19 E. ROVELLI	ITA	Yamaha YZF-R3	23.792 0.759	30.065	14.459 0.179	13.891	28.795	<b>1'51.002</b> 1'51.940	25	0.938
26	11 N. CUPAIOLI	ITA	Yamaha YZF-R3	24.249	30.444 0.092	14.623 0.205	13.840	28.863 0.271	<b>1'52.019</b> 1'52.587	26	0.568
<b>Overall Ideal Time</b>				23.264	28.710	13.912	12.921	27.318	<b>1'46.125</b>		

27/05/2017

These data/results cannot be reproduced, stored and/or transmitted in whole or in part by any manner of electronic, mechanical, photocopying, recording, broadcasting or otherwise now known or herein after developed without the previous express consent by the copyright owner, except for reproduction in daily press and regular printed publications on sale to the public within 60 days of the event related to those data/results and always provided that copyright symbol appears together as follows below.

© DORNA WSBK ORGANIZATION Srl 2017

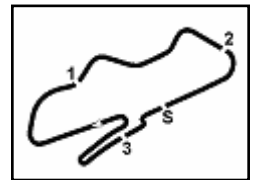
FICR PERUGIA TIMING



Official Tyre Supplier



Official Timekeeper



## UK Round, 26-27-28 May 2017

### World Supersport 300 - Chronological Analysis Superpole 1

1° 99 P. GRASSIA (1'47.227)								
Lap	Seg. 1	Seg. 2	Seg. 3	Seg. 4	Seg. 5	Lap Time	km/h	Local Time

1	24.322	35.588	19.903	15.173	29.180	1:47.227	114.9	13:02:21.002
2	24.047	29.687	15.459	14.489	30.510	1:54.467	154.3	13:04:15.469
3	23.515	29.135	14.241	13.426	27.712	1:48.561	170.3	13:06:04.030
4	26.807	28.971	14.224	13.195	27.583	1:47.488	174.5	13:07:51.518
5	23.960	30.449	14.330	13.453	27.746	1:52.785	169.8	13:09:44.303
6	23.957	29.737	17.633	17.452	31.561	2:00.343	150.0	13:11:44.646
7	23.832	28.712	14.004	13.185	27.369	1:47.227	175.3	13:13:31.873
7	23.832	29.250	14.222	13.133	27.353	1:47.790	168.2	13:15:19.663

2° 23 M. BASTIANELLI (1'47.261)								
Lap	Seg. 1	Seg. 2	Seg. 3	Seg. 4	Seg. 5	Lap Time	km/h	Local Time

1	24.352	31.990	16.100	15.467	30.646	1:56.424	131.7	13:02:09.132
2	23.842	29.215	14.238	13.468	35.151	1:48.571	170.1	13:04:05.566
3	23.961	29.163	14.356	13.219	27.991	1:57.864	175.6	13:05:54.127
4	23.893	29.053	14.297	16.902	33.651	1:48.209	178.2	13:07:51.991
5	23.883	29.053	14.297	16.902	33.651	1:48.209	178.2	13:07:51.991
6	25.614	28.838	14.389	13.479	27.793	1:48.392	169.0	13:09:40.383
7	23.980	28.711	14.610	13.665	27.919	1:48.945	170.9	13:11:44.266
7	23.869	28.710	14.047	13.130	27.505	1:47.261	171.2	13:13:32.211
7	23.869	28.710	14.047	13.130	27.505	1:47.261	171.2	13:15:20.472

3° 12 A. RUSMIPUTRO (1'47.293)								
Lap	Seg. 1	Seg. 2	Seg. 3	Seg. 4	Seg. 5	Lap Time	km/h	Local Time

1	24.203	37.907	17.705	17.971	31.038	1:56.697	126.6	13:02:21.559
2	24.685	29.501	14.433	13.442	27.740	1:49.319	168.5	13:04:10.878
3	23.582	30.484	15.672	14.201	28.402	1:53.444	142.1	13:06:04.322
4	23.686	29.154	14.070	13.494	27.909	1:48.209	178.2	13:07:52.531
5	23.686	29.054	13.912	13.194	27.447	1:47.293	179.7	13:09:39.824
6	25.675	28.838	16.553	16.390	35.602	2:05.009	120.9	13:11:44.833
7	23.781	29.335	14.185	13.242	27.813	1:49.654 C	176.8	13:13:34.877
7	23.264	29.956	13.994	13.108	27.455	1:47.777	175.0	13:15:22.264

4° 2 A. CARRASCO (1'47.449)								
Lap	Seg. 1	Seg. 2	Seg. 3	Seg. 4	Seg. 5	Lap Time	km/h	Local Time

1	24.214	32.126	16.193	15.031	30.258	1:56.697	126.6	13:02:07.752
2	24.204	30.105	14.302	13.387	32.689	1:54.697	176.2	13:04:02.449
3	24.134	29.537	14.509	13.722	28.743	1:50.715	165.1	13:05:53.164
4	24.164	29.737	14.122	14.034	28.191	1:50.218	175.3	13:07:43.382
5	23.781	29.432	14.382	13.482	28.299	1:49.759	170.3	13:09:33.141
6	25.514	29.323	14.284	13.236	27.963	1:48.587	175.3	13:11:21.728
7	23.575	29.140	14.164	13.217	27.807	1:49.842	175.6	13:13:11.570
8	23.871	28.869	14.042	13.195	27.768	1:47.449	177.9	13:14:59.019
8	23.871	29.252	14.039	13.270	28.834	1:49.266	179.7	13:16:48.285

5° 28 P. GIACOMINI (1'47.734)								
Lap	Seg. 1	Seg. 2	Seg. 3	Seg. 4	Seg. 5	Lap Time	km/h	Local Time

1	24.883	31.501	15.006	14.790	30.164	1:55.752	168.8	13:02:06.821
2	24.582	30.265	14.510	14.070	32.024	1:55.752	168.8	13:04:02.573
3	26.357	30.061	14.296	13.211	28.616	1:50.766	173.4	13:05:53.339
4	23.840	30.281	15.027	13.776	28.182	1:53.423	161.4	13:07:46.762
5	23.790	29.179	14.165	13.096	27.706	1:47.990	172.8	13:09:34.752
6	23.940	29.146	14.382	13.106	27.600	1:48.024	171.2	13:11:22.776
7	23.714	29.137	14.224	12.921	27.748	1:47.744	172.2	13:13:10.520
8	23.774	29.399	14.225	13.018	27.318	1:47.734	170.6	13:14:58.254
8	23.682	29.683	14.197	13.001	27.389	1:47.952	173.6	13:16:46.206

6° 18 A. MURLEY (1'47.742)								
Lap	Seg. 1	Seg. 2	Seg. 3	Seg. 4	Seg. 5	Lap Time	km/h	Local Time

1	24.213	30.960	15.414	16.913	31.964	1:56.936	142.1	13:02:02.312
2	24.135	29.718	14.392	13.548	28.065	1:49.936	172.2	13:03:52.248
3	24.601	29.612	14.047	13.277	28.004	1:49.075	171.7	13:05:41.323
4	23.864	31.190	16.637	15.077	35.188	2:02.693	137.4	13:07:44.016
5	24.100	29.245	14.262	13.279	27.797	1:48.447	175.2	13:09:32.463
6	24.100	29.579	14.434	13.413	27.993	1:49.519	169.0	13:11:21.982
7	24.025	29.130	14.281	13.148	27.763	1:48.347	168.5	13:13:10.329
7	24.111	29.406	14.084	13.038	27.870	1:48.509	173.4	13:14:58.838
8	23.824	29.178	14.158	13.033	27.549	1:47.742	177.9	13:16:46.580

7° 33 D. VALLE (1'47.777)								
Lap	Seg. 1	Seg. 2	Seg. 3	Seg. 4	Seg. 5	Lap Time	km/h	Local Time

1	24.166	34.919	20.715	14.912	32.785	1:56.697	126.6	13:02:23.775
2	24.017	29.718	14.392	13.334	28.129	1:49.714	175.6	13:04:13.489
3	23.869	29.741	14.455	13.251	27.916	1:49.380	169.8	13:06:02.869
4	23.513	29.110	14.198	13.322	27.634	1:47.777	177.9	13:07:52.683
4	23.513	29.110	14.198	13.322	27.634	1:47.777	177.9	13:09:40.460

5	25.299	30.845	16.342	16.556	37.023	2:06.065	127.8	13:11:46.525
6	23.760	29.502	14.250	13.273	28.268	1:49.053	175.9	13:13:35.578
7	23.656	29.327	14.251	13.061	27.728	1:48.023	178.5	13:15:23.601

8° 84 M. CARBONERA (1'48.274)								
Lap	Seg. 1	Seg. 2	Seg. 3	Seg. 4	Seg. 5	Lap Time	km/h	Local Time

1	24.142	36.240	19.835	15.369	32.049	1:50.264	113.2	13:02:24.265
2	24.047	29.951	14.060	13.541	28.570	1:48.274	174.8	13:04:14.529
3	23.885	29.070	14.240	13.556	28.448	1:49.361	172.8	13:06:03.890
4	24.026	28.988	14.068	13.620	28.726	1:49.287	176.2	13:07:53.177
5	24.026	28.998	14.210	13.227	27.813	1:48.274	174.8	13:09:41.451
6	24.717	31.653	15.581	13.649	29.883	1:55.483	163.9	13:11:36.934
7	23.870	29.349	14.348	13.206	27.783	1:48.556	169.8	13:13:25.490
7	24.335	31.354	15.655	13.991	29.497	1:54.832	163.1	13:15:20.322

9° 14 E. DE LA VEGA (1'48.590)								
Lap	Seg. 1	Seg. 2	Seg. 3	Seg. 4	Seg. 5	Lap Time	km/h	Local Time

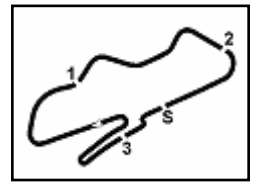
1	24.437	33.950	19.566	15.408	29.734	1:51.949	106.7	13:02:22.861
2	23.860	30.713	14.395	13.803	28.601	1:48.590	175.3	13:04:14.810
3	24.218	29.069	14.296	13.352	28.013	1:48.590	175.3	13:06:03.400
4	24.188	28.888	14.337	13.530	28.730	1:49.703	170.1	13:07:53.103
5	24.188	29.152	14.056	13.245	28.149	1:48.790	174.2	13:09:41.893
6	25.460	31.663	16.329	15.633	35.275	2:03.460	134.5	13:11:45.353
7	24.180	28.941	14.027	13.246	28.388	1:48.782	174.5	13:13:34.135
7	23.506	29.887	14.271	13.120	27.933	1:48.717	169.8	13:15:22.852

10° 27 F. ROVELLI (1'48.591)								
Lap	Seg. 1	Seg. 2	Seg. 3	Seg. 4	Seg. 5	Lap Time	km/h	Local Time

1	24.098	31.277	14.602	13.844	28.800	1:49.117	170.1	13:02:04.125
2	23.918	29.244	14.132	13.525	28.118	1:49.117	175.0	13:03:53.242
3	23.881	32.200	14.256	13.407	27.784	1:51.565	172.2	13:05:44.807
4	23.748	30.052	15.603	13.282	21.960	1:50.508	130.4	13:07:47.315
5	23.748	29.627	14.235	13.828	27.606	1:49.044	175.6	13:09:36.359
6	23.930	29.942	14.597	13.269	27.543	1:49.281	175.0	13:11:25.640
7	23.971	29.624	14.566	13.355	27.678	1:49.194	170.6	13:13:14.834
7	23.729	29.504	14.370	13.272	27.716	1:48.591	170.1	13:15:03.425

11° 80 A. PONTONE (1'48.614)								
Lap	Seg. 1	Seg. 2	Seg. 3	Seg. 4	Seg. 5	Lap Time	km/h	Local Time

1	24.653	31.823	14.538	14.571	32.152	1:56.665	171.4	13:02:06.950
2	24.109	30.103	14.318	13.652	32.939	1:55.665	170.9	13:04:02.615
3	25.689	29.604	14.375	13.438	27.878	1:49.404	171.2	13:05:52.019
4	23.689	30.174	17.378	14.621	31.981	1:59.843	133.2	13:07:51.862
5	23.953	29.278	14.063	13.787	27.854	1:48.935	172.8	13:09:40.797
6	23.935	31.528	16.497	16.010	36.158	2:04.12		



## UK Round, 26-27-28 May 2017

### World Supersport 300 - Chronological Analysis Superpole 1

15° 35 A. TRIGLIA (1'48.943)								
Lap	Seg. 1	Seg. 2	Seg. 3	Seg. 4	Seg. 5	Lap Time	km/h	Local Time
1	24.542	31.035	15.385	16.678	36.895	1'55.822	135.3	13:02:07.298
2	24.217	29.942	14.534	13.100	29.075	1'50.868	172.5	13:05:53.988
3	23.935	30.185	15.686	14.473	28.838	1'53.117	150.2	13:07:47.105
4	24.356	28.974	14.285	13.486	27.842	1'48.943	172.5	13:09:36.048
5	24.025	29.881	14.808	13.848	44.070	2'06.632	167.2	13:11:42.680
6	24.669	30.611	14.212	13.384	28.300	1'51.176	174.2	13:13:33.856
7	23.734	30.361	14.461	13.429	28.302	1'50.287	176.2	13:15:24.143

16° 9 R. DOORAKKERS (1'49.302)								
Lap	Seg. 1	Seg. 2	Seg. 3	Seg. 4	Seg. 5	Lap Time	km/h	Local Time
1	25.075	32.427	15.240	14.168	32.345	1'51.543	164.1	13:02:06.412
2	24.471	29.730	14.199	13.690	28.849	1'50.954	169.8	13:03:57.955
3	24.342	29.227	14.148	13.408	28.247	1'49.372	169.5	13:05:48.909
4	24.180	29.377	14.358	13.473	28.428	1'49.816	167.4	13:07:38.281
5	24.136	29.348	14.566	13.665	28.268	1'49.973	164.9	13:09:28.097
6	24.034	29.030	14.349	13.548	28.341	1'49.302	165.4	13:11:18.070
7	24.054	29.891	14.188	13.570	28.308	1'50.011	171.4	13:13:07.372
8	24.259	29.467	14.335	13.369	28.419	1'49.849	165.9	13:14:57.383

17° 62 J. SCHULTZ (1'49.348)								
Lap	Seg. 1	Seg. 2	Seg. 3	Seg. 4	Seg. 5	Lap Time	km/h	Local Time
1	24.273	31.554	14.871	13.548	29.801	1'55.740	170.9	13:02:02.805
2	24.024	29.528	14.334	13.190	28.570	1'49.646	171.2	13:03:58.545
3	24.280	29.372	14.279	13.492	28.158	1'49.581	170.3	13:05:48.911
4	24.216	30.018	14.201	13.720	28.650	1'50.805	171.2	13:07:37.772
5	23.983	29.420	14.534	13.282	28.179	1'49.398	169.3	13:09:28.577
6	24.186	29.177	14.620	13.184	28.181	1'49.348	168.5	13:11:17.975
7	24.157	29.530	14.412	13.742	28.162	1'50.003	167.7	13:13:07.323
8	24.566	29.542	14.081	13.453	28.739	1'50.381	173.1	13:14:57.326

18° 130 R. FERREIRA (1'49.623)								
Lap	Seg. 1	Seg. 2	Seg. 3	Seg. 4	Seg. 5	Lap Time	km/h	Local Time
1	24.368	30.406	14.799	14.009	34.449	1'52.251	164.1	13:02:01.628
2	23.713	30.691	14.399	13.744	29.049	1'52.251	172.8	13:03:53.879
3	24.612	30.477	14.246	14.454	28.735	1'51.625	170.9	13:05:45.504
4	24.539	29.656	14.319	13.631	28.577	1'50.795	169.0	13:07:36.299
5	24.310	30.276	14.547	13.533	28.359	1'51.254	164.9	13:09:27.553
6	24.075	29.890	14.761	13.502	28.232	1'50.695	166.4	13:11:18.248
7	24.101	29.654	14.427	13.406	28.129	1'49.691	169.5	13:13:07.939
8	24.231	29.498	14.524	13.320	28.180	1'49.623	169.3	13:14:57.562

19° 64 A. PAK (1'49.919)								
Lap	Seg. 1	Seg. 2	Seg. 3	Seg. 4	Seg. 5	Lap Time	km/h	Local Time
1	24.799	34.149	14.839	14.223	29.559	1'53.328	169.0	13:02:11.393
2	24.705	30.553	14.563	14.074	29.339	1'53.328	169.8	13:04:04.721
3	24.690	30.309	14.415	13.665	28.813	1'51.907	172.0	13:05:56.628
4	24.690	29.862	14.372	13.682	28.565	1'51.171	171.7	13:07:47.799
5	24.193	29.526	14.089	13.604	28.507	1'49.919	173.6	13:09:37.718
6	24.484	29.843	14.540	13.568	28.514	1'50.949	171.7	13:11:28.667
7	24.661	29.671	14.430	13.551	28.763	1'51.076	170.9	13:13:19.743
8	24.326	29.508	14.259	13.495	28.574	1'50.162	171.4	13:15:09.905

20° 121 K. PATOVA (1'50.257)								
Lap	Seg. 1	Seg. 2	Seg. 3	Seg. 4	Seg. 5	Lap Time	km/h	Local Time
1	24.337	32.502	14.867	13.738	29.399	1'52.636	168.5	13:02:09.864
2	24.619	30.105	14.526	13.536	30.132	1'52.636	172.0	13:04:02.500
3	24.303	29.774	14.318	13.349	28.301	1'50.361	173.9	13:05:52.861
4	24.303	29.621	14.347	13.707	28.279	1'50.257	174.2	13:07:43.118

21° 21 A. BIDDLE (1'50.394)								
Lap	Seg. 1	Seg. 2	Seg. 3	Seg. 4	Seg. 5	Lap Time	km/h	Local Time
1	24.050	31.469	14.834	14.031	29.155	1'50.802	174.2	13:02:02.959
2	23.754	30.019	14.267	13.645	28.821	1'50.802	174.8	13:03:53.761
3	24.157	30.041	14.622	13.669	28.308	1'50.394	169.5	13:05:44.155
4	24.157	30.745	15.182	14.864	34.113	1'59.061	151.5	13:07:43.216

22° 7 N. SETTIMO (1'50.837)								
Lap	Seg. 1	Seg. 2	Seg. 3	Seg. 4	Seg. 5	Lap Time	km/h	Local Time
1	24.371	32.253	15.259	14.844	30.957	1'51.973	164.6	13:02:09.994
2	24.371	30.156	14.594	13.577	29.275	1'51.973	171.7	13:04:01.967

2	25.032	30.255	14.720	13.343	28.508	1'51.858	175.0	13:05:53.825
3	24.363	29.569	14.581	13.813	28.559	1'50.885	172.5	13:07:44.710
4	24.118	30.312	14.806	13.487	28.272	1'50.995	166.9	13:09:35.705
5	24.420	30.078	14.860	13.494	28.033	1'50.885	173.6	13:11:26.590
6	24.359	30.035	14.570	13.568	28.305	1'50.837	170.1	13:13:17.427
7	24.600	30.166	14.496	13.682	28.506	1'51.450	169.5	13:15:08.877

23° 26 L. HOPKINS (1'50.919)								
Lap	Seg. 1	Seg. 2	Seg. 3	Seg. 4	Seg. 5	Lap Time	km/h	Local Time
1	24.511	37.064	16.147	14.910	32.432	1'53.056	160.2	13:02:22.192
2	24.215	30.133	14.322	13.756	28.800	1'51.226	174.2	13:04:15.248
3	24.078	29.999	14.452	13.815	29.036	1'51.380	172.8	13:06:06.474
4	24.400	30.448	14.565	13.932	28.889	1'52.234	172.0	13:07:57.854
5	24.421	30.359	14.551	13.688	29.375	1'52.394	172.8	13:09:50.088
6	24.214	30.031	14.493	13.777	28.404	1'50.919	172.2	13:11:42.482
7	24.028	30.271	14.244	13.528	29.468	1'51.539	175.9	13:13:33.401

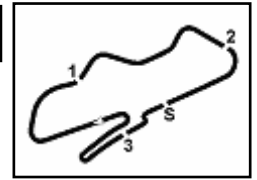
24° 53 V. GRIMOUX (1'51.020)								
Lap	Seg. 1	Seg. 2	Seg. 3	Seg. 4	Seg. 5	Lap Time	km/h	Local Time
1	24.763	31.574	15.026	14.687	32.348	1'52.387	160.7	13:02:01.881
2	24.369	30.006	14.306	14.169	28.861	1'51.711	168.0	13:03:54.268
3	24.357	29.974	14.328	14.013	28.348	1'51.020	165.6	13:05:45.979
4	24.899	30.423	14.288	13.654	28.569	1'51.833	167.7	13:07:36.999
5	24.333	30.194	14.963	14.101	29.833	1'53.424	163.1	13:09:28.832
6	24.453	30.735	14.631	13.882	29.368	1'53.069	164.1	13:11:22.256
7	24.467	31.041	15.094	14.021	29.333	1'53.956	157.9	13:13:15.325

25° 19 E. ROVELLI (1'51.940)								
Lap	Seg. 1	Seg. 2	Seg. 3	Seg. 4	Seg. 5	Lap Time	km/h	Local Time
1	24.551	31.504	15.351	14.931	29.173	1'53.069	164.1	13:02:01.342
2	24.045	30.065	14.638	13.891	28.795	1'51.940	168.0	13:03:53.282
3	24.439	30.359	14.459	14.024	33.080	1'55.967	169.3	13:05:49.249
4	23.792	30.502	15.370	14.815	29.834	1'54.960	147.9	13:07:44.209
5	23.792	1'40.778	15.818	17.945	39.204	3'17.537 P	162.7	13:11:01.746

26° 11 N. CUPAIOLI (1'52.587)								
Lap	Seg. 1	Seg. 2	Seg. 3	Seg. 4	Seg. 5	Lap Time	km/h	Local Time
1	24.666	33.002	15.230	14.258	30.341	1'54.341	168.5	13:02:04.046
2	24.535	31.011	15.165	14.115	29.384	1'52.847	166.7	13:03:58.387
3	24.542	30.842	14.661	13.946	28.863	1'52.847	170.3	13:05:51.234
4	25.027	30.444	14.685	13.862	29.128	1'52.661	169.5	13:07:43.895
5	25.027	30.982	14.623	14.585	29.584	1'54.801	172.0	13:09:38.696
6	24.980	30.658	14.875	14.086	29.438	1'54.037	169.3	13:11:32.733
7	24.763	30.972	14.939	13.979	28.963	1'53.616	167.7	13:13:26.349
8	24.249	30.536	14.828	13.840	29.134	1'52.587	168.2	13:15:18.936

27/05/2017 P = Pits In/Out - C = Lap-Time Cancelled

These data/results cannot be reproduced, stored and/or transmitted in whole or in part by any manner of electronic, mechanical, photocopying, recording, broadcasting or otherwise now known or herein after developed without the previous express consent by the copyright owner, except for reproduction in daily press and regular printed publications on sale to the public within 60 days of the event

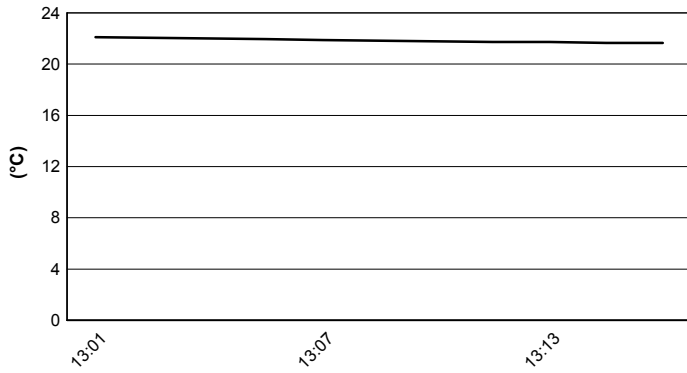


Donington Park 4.023 m

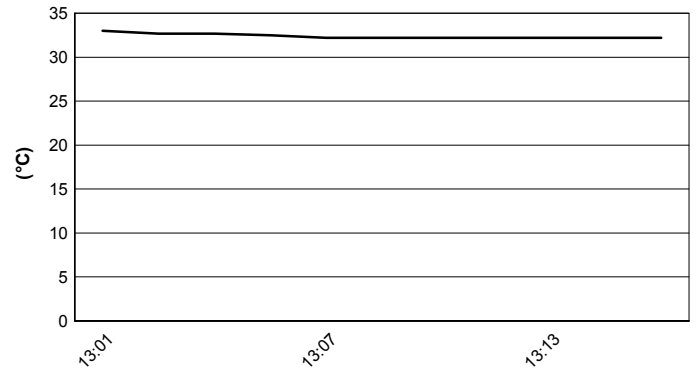
**UK Round, 26-27-28 May 2017**  
**World Supersport 300 - Weather Report Superpole 1**

Session started 13:00      Session ended 13:16

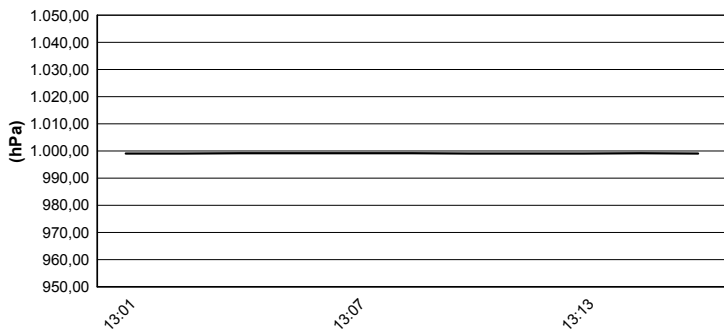
**Air Temperature**



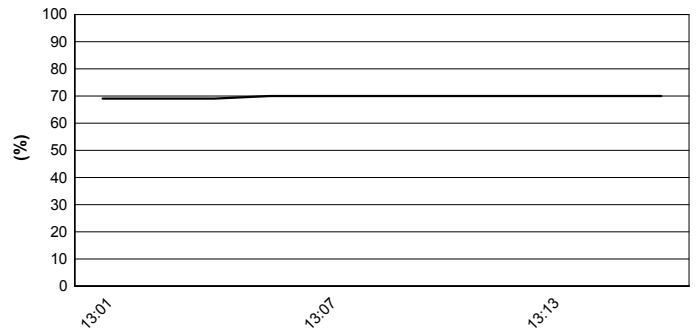
**Track Temperature**



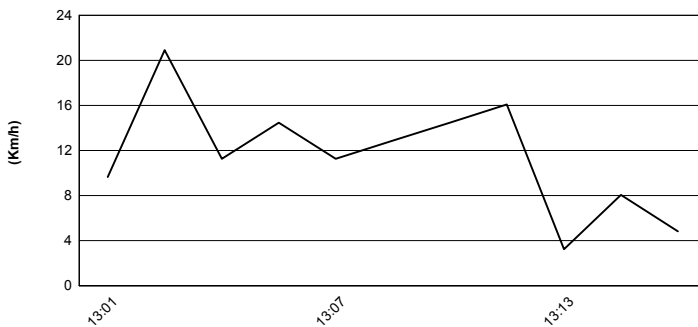
**Air Pressure**



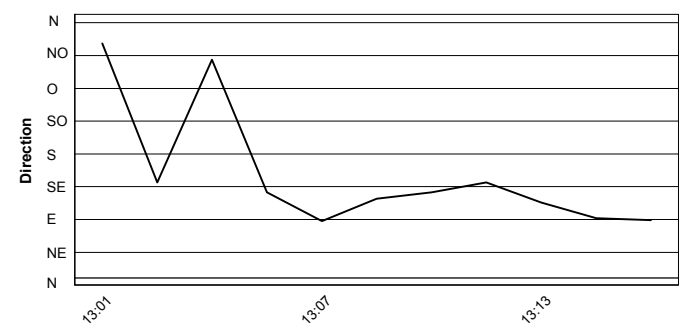
**Humidity**



**Wind Speed**



**Wind Direction**



27/05/2017

These data/results cannot be reproduced, stored and/or transmitted in whole or in part by any manner of electronic, mechanical, photocopying, recording, broadcasting or otherwise now known or herein after developed without the previous express consent by the copyright owner, except for reproduction in daily press and regular printed publications on sale to the public within 60 days of the event related to those data/results and always provided that copyright symbol appears together as follows below.  
© DORNA WSBK ORGANIZATION Srl 2017



Official Tyre Supplier



Official Timekeeper