

### German Round, 18-19-20 August 2017

#### Superstock 1000 - Free Practices Combined Results

No.	Rider	Nat	Team	Bike	FP1	FP2	Time	Gap	Rel.	Avg	Laps
1	<b>71 M. SCHEIB</b>	CHI	Nuova M2 Racing	Aprilia RSV4 RF	1'40.074	<b>1'39.330</b>	<b>1'39.330</b>			154,576	19
2	<b>R. TAMBURINI</b>	ITA	PATA Yamaha Official STK 1000 Team	Yamaha YZF R1	1'39.792	<b>1'39.456</b>	<b>1'39.456</b>	0.126	0.126	154,380	17
3	<b>23 F. SANDI</b>	ITA	Berclaz Racing Team	BMW S 1000 RR	1'40.033	<b>1'39.555</b>	<b>1'39.555</b>	0.225	0.099	154,226	18
4	<b>57 M. JONES</b>	AUS	Aruba.it Racing - Junior Team	Ducati Panigale R	1'39.804	<b>1'39.596</b>	<b>1'39.596</b>	0.266	0.041	154,163	28
5	<b>21 F. MARINO</b>	FRA	PATA Yamaha Official STK 1000 Team	Yamaha YZF R1	1'40.096	<b>1'39.653</b>	<b>1'39.653</b>	0.323	0.057	154,075	24
6	<b>70 L. VITALI</b>	ITA	Nuova M2 Racing	Aprilia RSV4 RF	1'40.456	<b>1'39.768</b>	<b>1'39.768</b>	0.438	0.115	153,897	23
7	<b>54 T. RAZGATLIOGLU</b>	TUR	Kawasaki Puccetti Racing	Kawasaki ZX-10RR	1'41.009	<b>1'39.945</b>	<b>1'39.945</b>	0.615	0.177	153,624	25
8	<b>J. GUARNONI</b>	FRA	Pedercini Racing Kawasaki	Kawasaki ZX-10RR	1'41.244	<b>1'40.086</b>	<b>1'40.086</b>	0.756	0.141	153,408	24
9	<b>55 I. MYKHALCHYK</b>	UKR	TripleM Racing	Kawasaki ZX-10RR	1'40.790	<b>1'40.132</b>	<b>1'40.132</b>	0.802	0.046	153,338	24
10	<b>12 M. RINALDI</b>	ITA	Aruba.it Racing - Junior Team	Ducati Panigale R	<b>1'40.251</b>	1'40.284	<b>1'40.251</b>	0.921	0.119	153,156	18
11	<b>5 M. FACCANI</b>	ITA	Althea BMW Racing Team	BMW S 1000 RR	1'40.750	<b>1'40.405</b>	<b>1'40.405</b>	1.075	0.154	152,921	19
12	<b>7 M. FRITZ</b>	GER	Bayer-Bikerbox Yamaichi	Yamaha YZF R1	1'41.806	<b>1'40.864</b>	<b>1'40.864</b>	1.534	0.459	152,225	18
13	<b>41 F. D'ANNUNZIO</b>	ITA	FDA Racing Team	BMW S 1000 RR	1'42.427	<b>1'41.550</b>	<b>1'41.550</b>	2.220	0.686	151,196	22
14	<b>3 S. SUCHET</b>	SUI	Berclaz Racing Team	BMW S 1000 RR	1'42.490	<b>1'41.786</b>	<b>1'41.786</b>	2.456	0.236	150,846	22
15	<b>90 T. FINSTERBUSCH</b>	GER	Agro On-Benjan-Kawasaki	Kawasaki ZX-10RR	1'42.331	<b>1'41.861</b>	<b>1'41.861</b>	2.531	0.075	150,735	20
16	<b>59 A. SCHACHT</b>	DEN	EAB Schacht Racing Team	Ducati Panigale R	1'43.301	<b>1'41.885</b>	<b>1'41.885</b>	2.555	0.024	150,699	24
17	<b>19 J. PUFFE</b>	GER	Althea MF84	BMW S 1000 RR	1'41.989	<b>1'41.900</b>	<b>1'41.900</b>	2.570	0.015	150,677	28
18	<b>68 G. SCOTT</b>	AUS	Agro On-Benjan-Kawasaki	Kawasaki ZX-10RR	1'43.409	<b>1'42.314</b>	<b>1'42.314</b>	2.984	0.414	150,067	29
19	<b>18 R. CECCHINI</b>	ITA	2R Road Racing	BMW S 1000 RR	1'43.502	<b>1'42.359</b>	<b>1'42.359</b>	3.029	0.045	150,001	24
20	<b>34 X. PINSACH</b>	ESP	ETG Racing	Kawasaki ZX-10RR	1'43.837	<b>1'42.605</b>	<b>1'42.605</b>	3.275	0.246	149,642	28
21	<b>6 E. PUSCEDDU</b>	ITA	D.K.Racing	BMW S 1000 RR	1'43.912	<b>1'42.634</b>	<b>1'42.634</b>	3.304	0.029	149,600	26
22	<b>77 W. TESSELS</b>	NED	Agro On-Benjan-Kawasaki	Kawasaki ZX-10RR	1'42.867	<b>1'42.698</b>	<b>1'42.698</b>	3.368	0.064	149,506	27
23	<b>51 E. VIONNET</b>	SUI	Motors Vionnet	BMW S 1000 RR	1'43.706	<b>1'43.273</b>	<b>1'43.273</b>	3.943	0.575	148,674	28
24	<b>32 M. MOSER</b>	GER	TripleM Racing	Kawasaki ZX-10RR	1'45.033	<b>1'43.529</b>	<b>1'43.529</b>	4.199	0.256	148,306	26
25	<b>13 F. SANCHIONI</b>	ITA	Clasitaly	BMW S 1000 RR	1'44.839	<b>1'44.076</b>	<b>1'44.076</b>	4.746	0.547	147,527	23
26	<b>81 A. BERNARDI</b>	ITA	TheBlackSheepTeam	Yamaha YZF R1	1'45.275	<b>1'44.237</b>	<b>1'44.237</b>	4.907	0.161	147,299	22
27	<b>46 M. CUDEVILLE</b>	FRA	Leader Team Flembbo	Kawasaki ZX-10RR	1'47.226	<b>1'44.611</b>	<b>1'44.611</b>	5.281	0.374	146,772	25
28	<b>25 W. SULIS</b>	ITA	Team Trasimeno	Yamaha YZF R1	1'46.233	<b>1'45.498</b>	<b>1'45.498</b>	6.168	0.887	145,538	25

18/08/2017

These data/results cannot be reproduced, stored and/or transmitted in whole or in part by any manner of electronic, mechanical, photocopying, recording, broadcasting or otherwise now known or herein after developed without the previous express consent by the copyright owner, except for reproduction in daily press and regular printed publications on sale to the public within 60 days of the event related to those data/results and always provided that copyright symbol appears together as follows below.

© DORNA WSBK ORGANIZATION Srl 2017



### German Round, 18-19-20 August 2017

#### Superstock 1000 - Results Free Practice 2nd Session

Lausitzring 4.265 m

1 / 2

No.	Rider	Nat	Team	Bike	Time	Gap	Rel.	Laps	Speed	
									Avg	Max
1	71 M. SCHEIB	CHI	Nuova M2 Racing	Aprilia RSV4 RF	<b>1'39.330</b>			10	154,576	272,1
2	2 R. TAMBURINI	ITA	PATA Yamaha Official STK 1000 Team	Yamaha YZF R1	<b>1'39.456</b>	0.126	0.126	11	154,380	277,0
3	23 F. SANDI	ITA	Berclaz Racing Team	BMW S 1000 RR	<b>1'39.555</b>	0.225	0.099	11	154,226	275,5
4	57 M. JONES	AUS	Aruba.it Racing - Junior Team	Ducati Panigale R	<b>1'39.596</b>	0.266	0.041	13	154,163	274,8
5	21 F. MARINO	FRA	PATA Yamaha Official STK 1000 Team	Yamaha YZF R1	<b>1'39.653</b>	0.323	0.057	14	154,075	277,0
6	70 L. VITALI	ITA	Nuova M2 Racing	Aprilia RSV4 RF	<b>1'39.768</b>	0.438	0.115	12	153,897	274,8
7	54 T. RAZGATLIOGLU	TUR	Kawasaki Puccetti Racing	Kawasaki ZX-10RR	<b>1'39.945</b>	0.615	0.177	12	153,624	274,1
8	11 J. GUARNONI	FRA	Pedercini Racing Kawasaki	Kawasaki ZX-10RR	<b>1'40.086</b>	0.756	0.141	13	153,408	272,7
9	55 I. MYKHALCHYK	UKR	TripleM Racing	Kawasaki ZX-10RR	<b>1'40.132</b>	0.802	0.046	12	153,338	268,7
10	12 M. RINALDI	ITA	Aruba.it Racing - Junior Team	Ducati Panigale R	<b>1'40.284</b>	0.954	0.152	10	153,105	274,1
11	5 M. FACCANI	ITA	Althea BMW Racing Team	BMW S 1000 RR	<b>1'40.405</b>	1.075	0.121	7	152,921	276,2
12	7 M. FRITZ	GER	Bayer-Bikerbox Yamaichi	Yamaha YZF R1	<b>1'40.864</b>	1.534	0.459	9	152,225	274,8
13	41 F. D'ANNUNZIO	ITA	FDA Racing Team	BMW S 1000 RR	<b>1'41.550</b>	2.220	0.686	11	151,196	270,0
14	3 S. SUCHET	SUI	Berclaz Racing Team	BMW S 1000 RR	<b>1'41.786</b>	2.456	0.236	11	150,846	272,7
15	90 T. FINSTERBUSCH	GER	Agro On-Benjan-Kawasaki	Kawasaki ZX-10RR	<b>1'41.861</b>	2.531	0.075	12	150,735	268,0
16	59 A. SCHACHT	DEN	EAB Schacht Racing Team	Ducati Panigale R	<b>1'41.885</b>	2.555	0.024	10	150,699	266,7
17	19 J. PUFFE	GER	Althea MF84	BMW S 1000 RR	<b>1'41.900</b>	2.570	0.015	14	150,677	274,1
18	68 G. SCOTT	AUS	Agro On-Benjan-Kawasaki	Kawasaki ZX-10RR	<b>1'42.314</b>	2.984	0.414	14	150,067	271,4
19	18 R. CECCHINI	ITA	2R Road Racing	BMW S 1000 RR	<b>1'42.359</b>	3.029	0.045	10	150,001	266,0
20	34 X. PINSACH	ESP	ETG Racing	Kawasaki ZX-10RR	<b>1'42.605</b>	3.275	0.246	14	149,642	272,7
21	6 E. PUSCEDDU	ITA	D.K.Racing	BMW S 1000 RR	<b>1'42.634</b>	3.304	0.029	13	149,600	268,0
22	77 W. TESSELS	NED	Agro On-Benjan-Kawasaki	Kawasaki ZX-10RR	<b>1'42.698</b>	3.368	0.064	13	149,506	266,7
23	51 E. VIONNET	SUI	Motors Vionnet	BMW S 1000 RR	<b>1'43.273</b>	3.943	0.575	14	148,674	268,0
24	32 M. MOSER	GER	TripleM Racing	Kawasaki ZX-10RR	<b>1'43.529</b>	4.199	0.256	13	148,306	261,5
25	13 F. SANCHIONI	ITA	Clasitaly	BMW S 1000 RR	<b>1'44.076</b>	4.746	0.547	11	147,527	270,0
26	81 A. BERNARDI	ITA	TheBlackSheepTeam	Yamaha YZF R1	<b>1'44.237</b>	4.907	0.161	12	147,299	264,0
27	46 M. CUDEVILLE	FRA	Leader Team Flembbo	Kawasaki ZX-10RR	<b>1'44.611</b>	5.281	0.374	12	146,772	264,0
28	25 W. SULIS	ITA	Team Trasimeno	Yamaha YZF R1	<b>1'45.498</b>	6.168	0.887	13	145,538	268,0

Qualifying Lap Time (107% of 1'39.330): 1'46.284

AIR	Humidity:	50%	Temp:	30°C
TRACK	Condition:	Dry	Temp:	40°C

Records	Pole (QP)	2016 R.De Rosa	1'38.819	155,370	Km/h
	Race (RC)	2005 K.Sofuoglu	1'42.612	149,630	Km/h
	Circuit (QP)	2016 R.De Rosa	1'38.819	155,370	Km/h

Start 18/08/2017 13:50 End 14:22 The results are provisional until the end of the time limit for protests and appeals and the completion of the technical checks.

These data/results cannot be reproduced, stored and/or transmitted in whole or in part by any manner of electronic, mechanical, photocopying, recording, broadcasting or otherwise now known or herein after developed without the previous express consent by the copyright owner, except for reproduction in daily press and regular printed publications on sale to the public within 60 days of the event related to those data/results and always provided that copyright symbol appears together as follows below.

© DORNA WSBK ORGANIZATION Srl 2017

### German Round, 18-19-20 August 2017

#### Superstock 1000 - Results Free Practice 2nd Session

#### Session Highlights

Local Time	No. Rider	Description
13.50.00		Start
13.54.30	5 M. FACCANI	Crashed - Turn 6
13.55.20	5 M. FACCANI	Re-joined
13.56.25	25 W. SULIS	Lap Cancelled - Exceeded Track Limits - Turn 1
13.57.36	81 A. BERNARDI	Lap Cancelled - Exceeded Track Limits - Turn 1
13.57.52	51 E. VIONNET	Lap Cancelled - Exceeded Track Limits - Turn 5
14.00.52	68 G. SCOTT	Lap Cancelled - Exceeded Track Limits - Turn 1
14.00.53	90 T. FINSTERBUSCH	Lap Cancelled - Exceeded Track Limits - Turn 1
14.01.34	13 F. SANCHIONI	Lap Cancelled - Exceeded Track Limits - Turn 1
14.03.23	41 F. D'ANNUNZIO	Crashed - Turn 5
14.03.49	41 F. D'ANNUNZIO	Re-joined
14.05.09	25 W. SULIS	Lap Cancelled - Exceeded Track Limits - Turn 1
14.10.49	6 E. PUSCEDDU	Lap Cancelled - Exceeded Track Limits - Turn 1
14.10.50	25 W. SULIS	Lap Cancelled - Exceeded Track Limits - Turn 1
14.13.06	25 W. SULIS	Lap Cancelled - Exceeded Track Limits - Turn 1
14.15.16	71 M. SCHEIB	Lap Cancelled - Exceeded Track Limits - Turn 1
14.17.08	6 E. PUSCEDDU	Lap Cancelled - Exceeded Track Limits
14.17.13	25 W. SULIS	Lap Cancelled - Exceeded Track Limits
14.22.00		End Of Session

#### Fastest Laps Sequence

No.	Rider	Nat	Team	Bike	Local Time	Time	Gap	Avg
21	F. MARINO	FRA	PATA Yamaha Official STK 1000 Team	Yamaha YZF R1	13:53'25.511	<b>1'40.816</b>		152,297
23	F. SANDI	ITA	Berclaz Racing Team	BMW S 1000 RR	13:54'49.236	<b>1'40.098</b>	-0.718	153,390
71	M. SCHEIB	CHI	Nuova M2 Racing	Aprilia RSV4 RF	13:55'50.079	<b>1'40.071</b>	-0.027	153,431
21	F. MARINO	FRA	PATA Yamaha Official STK 1000 Team	Yamaha YZF R1	13:56'46.217	<b>1'40.021</b>	-0.050	153,508
23	F. SANDI	ITA	Berclaz Racing Team	BMW S 1000 RR	13:58'11.753	<b>1'39.841</b>	-0.180	153,785
2	R. TAMBURINI	ITA	PATA Yamaha Official STK 1000 Team	Yamaha YZF R1	14:08'49.812	<b>1'39.601</b>	-0.240	154,155
71	M. SCHEIB	CHI	Nuova M2 Racing	Aprilia RSV4 RF	14:13'10.902	<b>1'39.330</b>	-0.271	154,576

Start 18/08/2017 13:50 End 14:22 The results are provisional until the end of the time limit for protests and appeals and the completion of the technical checks.

These data/results cannot be reproduced, stored and/or transmitted in whole or in part by any manner of electronic, mechanical, photocopying, recording, broadcasting or otherwise now known or herein after developed without the previous express consent by the copyright owner, except for reproduction in daily press and regular printed publications on sale to the public within 60 days of the event related to those data/results and always provided that copyright symbol appears together as follows below.

© DORNA WSBK ORGANIZATION Srl 2017



3.3

STK1000  
120/06

### German Round, 18-19-20 August 2017

### Superstock 1000 - Best Sector & Speed Free Practice 2nd Session

Lausitzring 4.265 m

BEST LAP			
1	71 M. SCHEIB	Aprilia RSV4 RF	1'39.330
2	2 R. TAMBURINI	Yamaha YZF R1	1'39.456
3	23 F. SANDI	BMW S 1000 RR	1'39.555
4	57 M. JONES	Ducati Panigale R	1'39.596
5	21 F. MARINO	Yamaha YZF R1	1'39.653
6	70 L. VITALI	Aprilia RSV4 RF	1'39.768
7	54 T. RAZGATLIOGLU	Kawasaki ZX-10RR	1'39.945
8	11 J. GUARNONI	Kawasaki ZX-10RR	1'40.086
9	55 I. MYKHALCHYK	Kawasaki ZX-10RR	1'40.132
10	12 M. RINALDI	Ducati Panigale R	1'40.284
11	5 M. FACCANI	BMW S 1000 RR	1'40.405
12	7 M. FRITZ	Yamaha YZF R1	1'40.864
13	41 F. D'ANNUNZIO	BMW S 1000 RR	1'41.550
14	3 S. SUCHET	BMW S 1000 RR	1'41.786
15	90 T. FINSTERBUSCH	Kawasaki ZX-10RR	1'41.861
16	59 A. SCHACHT	Ducati Panigale R	1'41.885
17	19 J. PUFFE	BMW S 1000 RR	1'41.900
18	68 G. SCOTT	Kawasaki ZX-10RR	1'42.314
19	18 R. CECCHINI	BMW S 1000 RR	1'42.359
20	34 X. PINSACH	Kawasaki ZX-10RR	1'42.605
21	6 E. PUSCEDDU	BMW S 1000 RR	1'42.634
22	77 W. TESSELS	Kawasaki ZX-10RR	1'42.698
23	51 E. VIONNET	BMW S 1000 RR	1'43.273
24	32 M. MOSER	Kawasaki ZX-10RR	1'43.529
25	13 F. SANCHIONI	BMW S 1000 RR	1'44.076
26	81 A. BERNARDI	Yamaha YZF R1	1'44.237
27	46 M. CUDEVILLE	Kawasaki ZX-10RR	1'44.611
28	25 W. SULIS	Yamaha YZF R1	1'45.498

SPEED			
1	21 F. MARINO	Yamaha YZF R1	277.0
2	2 R. TAMBURINI	Yamaha YZF R1	277.0
3	5 M. FACCANI	BMW S 1000 RR	276.2
4	23 F. SANDI	BMW S 1000 RR	275.5
5	7 M. FRITZ	Yamaha YZF R1	274.8
6	70 L. VITALI	Aprilia RSV4 RF	274.8
7	57 M. JONES	Ducati Panigale R	274.8
8	19 J. PUFFE	BMW S 1000 RR	274.1
9	12 M. RINALDI	Ducati Panigale R	274.1
10	54 T. RAZGATLIOGLU	Kawasaki ZX-10RR	274.1
11	34 X. PINSACH	Kawasaki ZX-10RR	272.7
12	11 J. GUARNONI	Kawasaki ZX-10RR	272.7
13	3 S. SUCHET	BMW S 1000 RR	272.7
14	71 M. SCHEIB	Aprilia RSV4 RF	272.1
15	68 G. SCOTT	Kawasaki ZX-10RR	271.4
16	13 F. SANCHIONI	BMW S 1000 RR	270.0
17	41 F. D'ANNUNZIO	BMW S 1000 RR	270.0
18	55 I. MYKHALCHYK	Kawasaki ZX-10RR	268.7
19	51 E. VIONNET	BMW S 1000 RR	268.0
20	90 T. FINSTERBUSCH	Kawasaki ZX-10RR	268.0
21	25 W. SULIS	Yamaha YZF R1	268.0
22	6 E. PUSCEDDU	BMW S 1000 RR	268.0
23	59 A. SCHACHT	Ducati Panigale R	266.7
24	77 W. TESSELS	Kawasaki ZX-10RR	266.7
25	18 R. CECCHINI	BMW S 1000 RR	266.0
26	81 A. BERNARDI	Yamaha YZF R1	264.0
27	46 M. CUDEVILLE	Kawasaki ZX-10RR	264.0
28	32 M. MOSER	Kawasaki ZX-10RR	261.5

SEG. 1		
1	71 M. SCHEIB	26.468
2	12 M. RINALDI	26.654
3	57 M. JONES	26.661
4	2 R. TAMBURINI	26.666
5	70 L. VITALI	26.696
6	23 F. SANDI	26.764
7	55 I. MYKHALCHYK	26.769
8	21 F. MARINO	26.800
9	54 T. RAZGATLIOGLU	26.840
10	11 J. GUARNONI	26.905
11	7 M. FRITZ	26.989
12	5 M. FACCANI	27.005
13	41 F. D'ANNUNZIO	27.153
14	59 A. SCHACHT	27.264
15	19 J. PUFFE	27.304
16	6 E. PUSCEDDU	27.323
17	77 W. TESSELS	27.343
18	3 S. SUCHET	27.374
19	90 T. FINSTERBUSCH	27.462
20	18 R. CECCHINI	27.477
21	34 X. PINSACH	27.547
22	68 G. SCOTT	27.574
23	51 E. VIONNET	27.688
24	81 A. BERNARDI	27.738
25	32 M. MOSER	27.757
26	13 F. SANCHIONI	27.919
27	46 M. CUDEVILLE	28.083
28	25 W. SULIS	28.446

SEG. 2		
1	23 F. SANDI	30.737
2	2 R. TAMBURINI	30.814
3	21 F. MARINO	30.835
4	70 L. VITALI	30.838
5	57 M. JONES	30.914
6	11 J. GUARNONI	30.936
7	71 M. SCHEIB	30.938
8	12 M. RINALDI	30.983
9	55 I. MYKHALCHYK	31.030
10	54 T. RAZGATLIOGLU	31.113
11	5 M. FACCANI	31.170
12	7 M. FRITZ	31.242
13	41 F. D'ANNUNZIO	31.256
14	90 T. FINSTERBUSCH	31.399
15	19 J. PUFFE	31.576
16	3 S. SUCHET	31.642
17	59 A. SCHACHT	31.682
18	77 W. TESSELS	31.685
19	6 E. PUSCEDDU	31.689
20	68 G. SCOTT	31.727
21	34 X. PINSACH	31.755
22	18 R. CECCHINI	31.777
23	51 E. VIONNET	31.940
24	46 M. CUDEVILLE	32.138
25	13 F. SANCHIONI	32.149
26	81 A. BERNARDI	32.156
27	32 M. MOSER	32.175
28	25 W. SULIS	32.575

SEG. 3		
1	70 L. VITALI	22.469
2	21 F. MARINO	22.501
3	57 M. JONES	22.531
4	2 R. TAMBURINI	22.542
5	54 T. RAZGATLIOGLU	22.556
6	71 M. SCHEIB	22.618
7	23 F. SANDI	22.619
8	5 M. FACCANI	22.623
9	12 M. RINALDI	22.677
10	55 I. MYKHALCHYK	22.682
11	11 J. GUARNONI	22.759
12	7 M. FRITZ	22.927
13	68 G. SCOTT	22.962
14	3 S. SUCHET	23.018
15	59 A. SCHACHT	23.022
16	41 F. D'ANNUNZIO	23.046
17	90 T. FINSTERBUSCH	23.063
18	18 R. CECCHINI	23.091
19	19 J. PUFFE	23.124
20	32 M. MOSER	23.224
21	34 X. PINSACH	23.286
22	77 W. TESSELS	23.297
23	51 E. VIONNET	23.328
24	6 E. PUSCEDDU	23.359
25	46 M. CUDEVILLE	23.680
26	13 F. SANCHIONI	23.687
27	81 A. BERNARDI	23.760
28	25 W. SULIS	23.882

SEG. 4		
1	54 T. RAZGATLIOGLU	19.248
2	71 M. SCHEIB	19.287
3	23 F. SANDI	19.296
4	21 F. MARINO	19.367
5	2 R. TAMBURINI	19.434
6	5 M. FACCANI	19.438
7	11 J. GUARNONI	19.486
8	57 M. JONES	19.490
9	70 L. VITALI	19.514
10	7 M. FRITZ	19.569
11	55 I. MYKHALCHYK	19.602
12	12 M. RINALDI	19.640
13	19 J. PUFFE	19.698
14	3 S. SUCHET	19.722
15	59 A. SCHACHT	19.759
16	18 R. CECCHINI	19.772
17	41 F. D'ANNUNZIO	19.773
18	34 X. PINSACH	19.898
19	90 T. FINSTERBUSCH	19.937
20	68 G. SCOTT	19.964
21	6 E. PUSCEDDU	20.083
22	77 W. TESSELS	20.120
23	51 E. VIONNET	20.141
24	32 M. MOSER	20.202
25	13 F. SANCHIONI	20.250
26	81 A. BERNARDI	20.334
27	25 W. SULIS	20.387
28	46 M. CUDEVILLE	20.553

18/08/2017

These data/results cannot be reproduced, stored and/or transmitted in whole or in part by any manner of electronic, mechanical, photocopying, recording, broadcasting or otherwise now known or herein after developed without the previous express consent by the copyright owner, except for reproduction in daily press and regular printed publications on sale to the public within 60 days of the event related to those data/results and always provided that copyright symbol appears together as follows below.

© DORNA WSBK ORGANIZATION Srl 2017

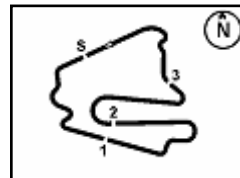
FICR PERUGIA TIMING



Official Tyre Supplier



Official Timekeeper



Lausitzring 4.265 m

### German Round, 18-19-20 August 2017

#### Superstock 1000 - Ideal Times Free Practice 2nd Session

Rider No.	Nat	Bike	Seg. 1 Diff. 1	Seg. 2 Diff. 2	Seg. 3 Diff. 3	Seg. 4 Diff. 4	Ideal Time			
							Best Lap	Pos.	Diff.	
1	71 M. SCHEIB	CHI	Aprilia RSV4 RF	26.468	30.938 0.019	22.618	19.287	1'39.311 1'39.330	1	0.019
2	23 F. SANDI	ITA	BMW S 1000 RR	26.764	30.737 0.139	22.619	19.296	1'39.416 1'39.555	3	0.139
3	2 R. TAMBURINI	ITA	Yamaha YZF R1	26.666	30.814	22.542	19.434	1'39.456 1'39.456	2	
4	21 F. MARINO	FRA	Yamaha YZF R1	26.800	30.835 0.125	22.501 0.006	19.367 0.019	1'39.503 1'39.653	5	0.150
5	70 L. VITALI	ITA	Aprilia RSV4 RF	26.696	30.838	22.469 0.233	19.514 0.018	1'39.517 1'39.768	6	0.251
6	57 M. JONES	AUS	Ducati Panigale R	26.661	30.914	22.531	19.490	1'39.596 1'39.596	4	
7	54 T. RAZGATLIOGLU	TUR	Kawasaki ZX-10RR	26.840	31.113	22.556	19.248 0.188	1'39.757 1'39.945	7	0.188
8	12 M. RINALDI	ITA	Ducati Panigale R	26.654 0.085	30.983	22.677 0.107	19.640 0.138	1'39.954 1'40.284	10	0.330
9	55 I. MYKHALCHYK	UKR	Kawasaki ZX-10RR	26.769	31.030	22.682 0.029	19.602 0.020	1'40.083 1'40.132	9	0.049
10	11 J. GUARNONI	FRA	Kawasaki ZX-10RR	26.905	30.936	22.759	19.486	1'40.086 1'40.086	8	
11	5 M. FACCANI	ITA	BMW S 1000 RR	27.005	31.170 0.087	22.623	19.438 0.082	1'40.236 1'40.405	11	0.169
12	7 M. FRITZ	GER	Yamaha YZF R1	26.989 0.124	31.242	22.927 0.013	19.569	1'40.727 1'40.864	12	0.137
13	41 F. D'ANNUNZIO	ITA	BMW S 1000 RR	27.153	31.256 0.175	23.046	19.773 0.147	1'41.228 1'41.550	13	0.322
14	19 J. PUFFE	GER	BMW S 1000 RR	27.304	31.576 0.035	23.124 0.163	19.698	1'41.702 1'41.900	17	0.198
15	59 A. SCHACHT	DEN	Ducati Panigale R	27.264 0.055	31.682	23.022 0.103	19.759	1'41.727 1'41.885	16	0.158
16	3 S. SUCHET	SUI	BMW S 1000 RR	27.374	31.642 0.030	23.018	19.722	1'41.756 1'41.786	14	0.030
17	90 T. FINSTERBUSCH	GER	Kawasaki ZX-10RR	27.462	31.399	23.063	19.937	1'41.861 1'41.861	15	
18	18 R. CECCHINI	ITA	BMW S 1000 RR	27.477	31.777 0.242	23.091	19.772	1'42.117 1'42.359	19	0.242
19	68 G. SCOTT	AUS	Kawasaki ZX-10RR	27.574 0.045	31.727 0.042	22.962	19.964	1'42.227 1'42.314	18	0.087
20	77 W. TESSELS	NED	Kawasaki ZX-10RR	27.343 0.140	31.685	23.297 0.048	20.120 0.065	1'42.445 1'42.698	22	0.253
21	6 E. PUSCEDDU	ITA	BMW S 1000 RR	27.323	31.689	23.359	20.083 0.180	1'42.454 1'42.634	21	0.180
22	34 X. PINSACH	ESP	Kawasaki ZX-10RR	27.547 0.089	31.755	23.286 0.030	19.898	1'42.486 1'42.605	20	0.119
23	51 E. VIONNET	SUI	BMW S 1000 RR	27.688	31.940 0.001	23.328 0.175	20.141	1'43.097 1'43.273	23	0.176
24	32 M. MOSER	GER	Kawasaki ZX-10RR	27.757 0.052	32.175 0.063	23.224	20.202 0.056	1'43.358 1'43.529	24	0.171
25	81 A. BERNARDI	ITA	Yamaha YZF R1	27.738 0.103	32.156	23.760 0.146	20.334	1'43.988 1'44.237	26	0.249
26	13 F. SANCHIONI	ITA	BMW S 1000 RR	27.919	32.149 0.006	23.687	20.250 0.065	1'44.005 1'44.076	25	0.071
27	46 M. CUDEVILLE	FRA	Kawasaki ZX-10RR	28.083	32.138	23.680	20.553 0.157	1'44.454 1'44.611	27	0.157
28	25 W. SULIS	ITA	Yamaha YZF R1	28.446	32.575 0.003	23.882 0.205	20.387	1'45.290 1'45.498	28	0.208
<b>Overall Ideal Time</b>				26.468	30.737	22.469	19.248	1'38.922		

18/08/2017

These data/results cannot be reproduced, stored and/or transmitted in whole or in part by any manner of electronic, mechanical, photocopying, recording, broadcasting or otherwise now known or herein after developed without the previous express consent by the copyright owner, except for reproduction in daily press and regular printed publications on sale to the public within 60 days of the event related to those data/results and always provided that copyright symbol appears together as follows below.

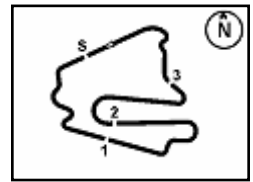
© DORNA WSBK ORGANIZATION Srl 2017

**PIRELLI PERUGIA TIMING**


Official Tyre Supplier



Official Timekeeper


**3.5**
**STK1000**  
**120/06**


Lausitzring 4.265 m

### German Round, 18-19-20 August 2017

### Superstock 1000 - Chronological Analysis Free Practice 2nd Session

**1 / 4**

1° 71 M. SCHEIB (1'39.330)							3 26.843 31.041 22.645 19.492 1'40.021 273.4 13:56'46.217								
Lap	Seg.1	Seg.2	Seg.3	Seg.4	Lap Time	km/h	Local Time	Lap	Seg.1	Seg.2	Seg.3	Seg.4	Lap Time	km/h	Local Time
1	30.281	31.711	23.204	19.791	1'44.822	267,3	13:52'25.186	4	27.207	31.203	22.713	19.487	1'40.610	274,8	13:58'26.827
2	26.881	30.999	22.686	19.505	1'40.071	268,7	13:55'50.079	5	27.031	30.934	22.650	19.489	1'40.104	274,1	14:00'06.931
3	31.168	31.395	23.096	19.587	1'45.246	270,7	13:57'35.325	6	26.969	30.943	22.734	19.498	1'40.144	274,1	14:01'47.075
4	27.459	31.252	23.154	19.747	1'41.612	270,0	13:59'16.937	7	27.005	31.118	<b>22.501</b>	19.570	1'40.194	274,1	14:03'27.269
5	27.238	31.648	23.054	33.391	1'55.331P	<b>272,1</b>	14:01'12.268	8	27.073	31.571	22.569	19.387	1'40.600	274,8	14:05'07.869
6	7'24.030	31.957	22.978	19.762	8'38.727P		14:09'50.995	9	28.963	31.771	23.503	28.287	1'52.524P	250,5	14:07'00.393
7	26.897	31.408	22.809	19.463	1'40.577	267,3	14:11'31.572	10	6'00.790	33.963	23.335	20.408	7'18.496P		14:14'18.889
8	<b>26.468</b>	30.957	<b>22.618</b>	<b>19.287</b>	<b>1'39.330</b>	270,0	14:13'10.902	11	<b>26.800</b>	30.960	22.507	19.386	<b>1'39.653</b>	272,7	14:15'58.542
9	26.706	<b>30.938</b>	22.629	19.380	1'39.653	269,3	14:14'50.555	12	26.819	30.845	22.578	19.475	1'39.717	276,2	14:17'38.259
10	1'04.593	33.359	23.747	32.669	2'34.368CP	271,4	14:17'24.923	13	32.951	36.352	23.919	19.697	1'52.919	<b>277,0</b>	14:19'31.178
								14	26.810	<b>30.835</b>	22.756	<b>19.367</b>	1'39.768	275,5	14:21'10.946
2° 2 R. TAMBURINI (1'39.456)							6° 70 L. VITALI (1'39.768)								
Lap	Seg.1	Seg.2	Seg.3	Seg.4	Lap Time	km/h	Local Time	Lap	Seg.1	Seg.2	Seg.3	Seg.4	Lap Time	km/h	Local Time
1	27.155	31.274	23.881	21.853	1'41.260	268,7	13:54'56.102	1	27.359	31.948	23.044	19.862	1'41.743	270,7	13:52'25.516
2	26.936	31.132	22.651	19.650	1'40.191	272,1	13:56'36.293	2	27.221	31.329	22.865	19.940	1'41.144	269,3	13:54'07.259
3	29.805	31.301	22.640	30.500	1'54.246P	272,1	13:58'30.539	3	29.616	33.099	24.838	19.729	1'47.263	274,1	13:57'35.666
4	5'44.688	32.118	23.107	19.641	6'59.554P		14:05'30.093	4	27.273	31.333	22.687	19.595	1'40.888	272,1	13:59'16.554
5	26.923	30.927	22.785	19.483	1'40.118	272,7	14:07'10.211	5	27.205	31.377	23.054	19.807	1'41.443	272,7	14:00'57.997
6	26.670	30.851	22.625	19.455	1'39.601	275,5	14:08'49.812	6	28.819	33.386	25.202	31.323	1'58.730P	270,7	14:02'56.727
7	26.840	31.016	22.731	19.637	1'40.224	275,5	14:10'30.036	7	5'39.953	31.855	22.900	19.819	6'54.527P		14:09'51.254
8	26.911	31.190	22.731	19.527	1'40.359	<b>277,0</b>	14:12'10.395	8	26.911	31.705	22.577	<b>19.514</b>	1'40.707	272,1	14:11'31.961
9	31.705	37.581	26.913	29.164	2'05.363P	251,7	14:14'15.758	9	26.752	30.922	<b>22.469</b>	19.654	1'39.797	<b>274,8</b>	14:13'11.758
10	3'41.834	31.481	23.108	19.678	4'56.101P		14:19'11.859	10	<b>26.696</b>	<b>30.838</b>	22.702	19.532	<b>1'39.768</b>	272,7	14:14'51.526
11	<b>26.666</b>	<b>30.814</b>	<b>22.542</b>	<b>19.434</b>	<b>1'39.456</b>	274,8	14:20'51.315	11	29.325	32.347	24.504	31.258	1'57.434P	273,4	14:16'48.960
								12	3'01.283	32.095	23.816	20.750	4'17.944P		14:21'06.904
3° 23 F. SANDI (1'39.555)							7° 54 T. RAZGATLIOGLU (1'39.945)								
Lap	Seg.1	Seg.2	Seg.3	Seg.4	Lap Time	km/h	Local Time	Lap	Seg.1	Seg.2	Seg.3	Seg.4	Lap Time	km/h	Local Time
1	26.793	31.111	22.716	19.478	1'40.098	272,7	13:54'49.236	1	28.142	33.645	24.160	20.575	1'45.678	248,2	13:52'58.730
2	28.255	31.489	23.377	19.555	1'42.676	270,0	13:56'31.912	2	27.787	31.859	23.728	20.311	1'43.685	263,4	13:56'28.093
3	26.965	<b>30.737</b>	22.668	19.471	1'39.841	271,4	13:58'11.753	3	27.426	31.742	23.363	19.702	1'42.233	268,0	13:58'10.326
4	26.901	31.070	22.643	19.696	1'40.310	273,4	13:59'52.063	4	27.162	31.776	23.007	19.623	1'41.568	269,3	13:59'51.894
5	27.202	31.179	22.952	30.608	1'51.941P	<b>275,5</b>	14:01'44.004	5	27.293	31.621	23.071	19.620	1'41.605	270,7	14:01'33.499
6	8'34.699	43.068	24.513	19.674	10'01.954P		14:11'45.958	6	27.211	31.486	22.989	19.451	1'41.137	269,3	14:03'14.636
7	<b>26.764</b>	30.876	<b>22.619</b>	<b>19.296</b>	<b>1'39.555</b>	269,3	14:13'25.513	7	28.073	33.460	23.366	30.919	1'55.818P	271,4	14:05'10.454
8	26.850	31.056	22.865	19.471	1'40.242	273,4	14:15'05.755	8	7'24.277	40.301	23.668	19.816	8'48.062P		14:13'58.516
9	26.851	30.928	22.703	19.306	1'39.788	<b>275,5</b>	14:16'45.543	9	27.090	31.306	22.745	19.367	1'40.508	269,3	14:15'39.024
10	35.782	33.270	23.569	19.893	1'52.514	274,8	14:18'38.057	10	<b>26.840</b>	<b>31.113</b>	<b>22.556</b>	19.436	<b>1'39.945</b>	<b>274,1</b>	14:17'18.969
11	26.937	30.887	22.691	19.471	1'39.986	273,4	14:20'18.043	11	26.900	31.192	22.672	<b>19.248</b>	1'40.012	272,1	14:18'58.981
								12	28.140	31.648	23.026	19.345	1'42.159	<b>274,1</b>	14:20'41.140
4° 57 M. JONES (1'39.596)							8° 11 J. GUARNONI (1'40.086)								
Lap	Seg.1	Seg.2	Seg.3	Seg.4	Lap Time	km/h	Local Time	Lap	Seg.1	Seg.2	Seg.3	Seg.4	Lap Time	km/h	Local Time
1	27.030	35.078	23.154	19.714	1'44.976	270,0	13:56'08.229	1	28.670	36.688	23.521	19.940	1'44.139	268,7	13:52'26.506
2	27.061	31.072	22.789	19.703	1'40.625	272,7	13:57'48.854	2	27.254	31.510	23.033	19.697	1'41.494	265,3	13:55'52.139
3	27.045	31.166	22.919	19.771	1'40.901	272,7	13:59'29.755	3	27.432	31.849	23.109	19.761	1'42.151	268,7	13:57'34.290
4	26.817	31.987	22.651	19.647	1'41.102	272,7	14:01'10.857	4	27.184	31.368	23.011	19.581	1'41.144	268,0	13:59'15.434
5	26.773	31.025	22.795	19.780	1'40.373	273,4	14:02'51.230	5	31.684	40.517	24.140	19.784	1'56.125	271,4	14:01'11.559
6	26.888	31.378	22.723	19.758	1'40.747	272,7	14:04'31.977	6	27.185	31.120	22.945	19.640	1'40.890	269,3	14:02'52.449
7	26.891	31.085	22.564	19.722	1'40.262	272,1	14:06'12.239	7	32.770	35.809	24.771	31.050	2'04.400P	<b>272,7</b>	14:04'56.849
8	27.126	31.262	22.711	19.681	1'40.780	270,7	14:07'53.019	8	5'23.877	41.565	24.273	19.806	6'49.521P		14:11'46.370
9	26.853	31.029	22.572	19.715	1'40.169	272,1	14:09'33.188	9	26.910	30.993	22.917	19.494	1'40.314	272,1	14:13'26.684
10	28.841	33.237	24.097	32.751	1'58.926P	271,4	14:11'32.114	10	<b>26.905</b>	<b>30.936</b>	<b>22.759</b>	<b>19.486</b>	<b>1'40.086</b>	271,4	14:15'06.770
11	4'55.906	32.300	22.618	19.755	6'10.579P		14:17'42.693	11	26.926	31.117	23.072	19.860	1'40.975	271,4	14:16'47.745
12	<b>26.661</b>	<b>30.914</b>	<b>22.531</b>	<b>19.490</b>	<b>1'39.596</b>	272,1	14:19'22.289	12	27.112	31.395	22.878	19.651	1'41.036	270,0	14:18'28.781
13	26.997	31.052	22.721	19.768	1'40.538	<b>274,8</b>	14:21'02.827	13	27.023	31.225	22.916	19.707	1'40.871	270,7	14:20'09.652
5° 21 F. MARINO (1'39.653)							9° 55 I. MYKHALCHYK (1'40.132)								
Lap	Seg.1	Seg.2	Seg.3	Seg.4	Lap Time	km/h	Local Time	Lap	Seg.1	Seg.2	Seg.3	Seg.4	Lap Time	km/h	Local Time
1	27.213	31.198	22.882	19.523	1'40.816	269,3	13:53'25.511	1	27.392	31.682	23.280	19.890	1'42.244	263,4	13:54'32.543
2	26.864	31.677	22.712	19.432	1'40.685	272,1	13:55'06.196								

18/08/2017 P = Pits In/Out - C = Lap-Time Cancelled

These data/results cannot be reproduced, stored and/or transmitted in whole or in part by any manner of electronic, mechanical, photocopying, recording, broadcasting or otherwise now known or herein after developed without the previous express consent by the copyright owner, except for reproduction in daily press and regular printed publications on sale to the public within 60 days of the event related to those data/results and always provided that copyright symbol appears together as follows below.

© DORNA WSBK ORGANIZATION Srl 2017

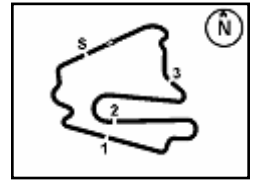
FICR PERUGIA TIMING



Official Tyre Supplier



Official Timekeeper



### German Round, 18-19-20 August 2017

#### Superstock 1000 - Chronological Analysis Free Practice 2nd Session

Lausitzring 4.265 m

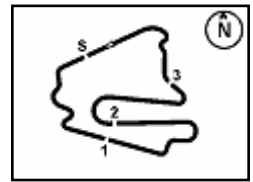
2 / 4

Lap	Seg.1	Seg.2	Seg.3	Seg.4	Lap Time	km/h	Local Time	Lap	Seg.1	Seg.2	Seg.3	Seg.4	Lap Time	km/h	Local Time	
<b>10° 12 M. RINALDI (1'40.284)</b>								<b>15° 90 T. FINSTERBUSCH (1'41.861)</b>								
1	27.059	31.857	31.008	20.087	1'50.011	270,0	13:54'58.473	1	27.988	32.922	24.187	20.373	32.922	24.187	20.373	13:51'55.036
<b>11° 5 M. FACCANI (1'40.405)</b>								<b>16° 59 A. SCHACHT (1'41.885)</b>								
1	27.277	1'49.139	30.030	33.255	3'19.701P	271,4	13:56'52.450	1	27.700	33.085	23.794	20.431	33.085	23.794	20.431	13:52'20.717
<b>12° 7 M. FRITZ (1'40.864)</b>								<b>17° 19 J. PUFFE (1'41.900)</b>								
1	27.608	31.558	23.381	19.893	1'42.440	265,3	13:54'23.724	1	28.020	32.108	23.766	20.464	32.108	23.766	20.464	13:53'41.630
<b>13° 41 F. D'ANNUNZIO (1'41.550)</b>								<b>18° 68 G. SCOTT (1'42.314)</b>								
1	27.658	31.390	23.349	20.651	1'43.048	266,7	13:54'15.282	1	28.441	33.323	24.581	21.093	33.323	24.581	21.093	13:51'53.743
<b>14° 3 S. SUCHET (1'41.786)</b>																
1	27.654	31.193	22.828	19.640	1'40.315	272,7	13:56'38.788	2	28.016	31.895	23.355	20.141	31.895	23.355	20.141	13:55'22.498
2	26.974	31.639	22.871	19.906	1'41.390	266,0	13:57'55.432	2	27.577	32.094	23.237	20.028	32.094	23.237	20.028	13:55'15.922
2	26.739	30.983	22.784	19.778	1'40.284	272,7	13:58'19.072	2	27.650	31.710	23.490	20.157	31.710	23.490	20.157	13:55'05.417
2	27.322	31.504	23.197	19.897	1'41.920	270,0	13:56'05.644	2	27.913	32.229	23.337	20.094	32.229	23.337	20.094	13:55'48.054
2	29.143	32.240	23.350	19.773	1'44.506	268,7	13:55'59.788	2	27.706	32.058	23.592	20.002	32.058	23.592	20.002	13:55'24.988
2	27.453	31.595	23.299	20.002	1'42.349	270,0	14:18'44.438	2	27.476	31.936	23.322	20.037	31.936	23.322	20.037	13:57'07.759
3	26.924	31.408	22.867	19.650	1'40.849	266,0	13:59'36.281	3	27.829	32.223	23.240	20.072	32.223	23.240	20.072	13:57'31.418
3	27.048	31.170	23.018	19.438	1'40.674	272,7	14:13'38.877	3	27.537	31.949	23.483	19.926	31.949	23.483	19.926	13:59'14.313
3	27.534	31.634	22.969	19.721	1'41.858	269,3	13:57'47.502	3	27.700	31.948	23.399	19.953	31.948	23.399	19.953	13:58'50.759
3	27.351	31.256	23.402	19.877	1'41.886	265,3	13:57'41.674	3	27.408	31.787	23.414	19.949	31.787	23.414	19.949	14:00'33.317
3	27.771	31.858	23.261	19.774	1'42.664	268,0	13:59'24.338	3	27.706	32.058	23.592	20.002	32.058	23.592	20.002	14:05'56.651
4	27.888	32.159	23.962	30.918	1'54.927P	270,7	14:00'13.999	4	27.537	31.949	23.483	19.926	31.949	23.483	19.926	14:12'13.235
4	27.484	31.379	22.669	19.486	1'41.018	274,1	14:15'19.895	4	27.700	31.948	23.399	19.953	31.948	23.399	19.953	14:13'55.573
4	27.241	32.932	23.032	20.132	1'43.337	270,7	13:59'30.839	4	27.408	31.787	23.414	19.949	31.787	23.414	19.949	14:15'37.473
4	27.771	31.858	23.261	19.774	1'42.664	268,0	13:59'24.338	4	27.408	31.787	23.414	19.949	31.787	23.414	19.949	14:17'20.972
4	27.771	31.858	23.261	19.774	1'42.664	268,0	13:59'24.338	4	27.408	31.787	23.414	19.949	31.787	23.414	19.949	14:19'03.385
5	30.872	37.239	27.420	22.772	1'58.303	267,3	14:03'15.370	4	27.537	31.949	23.483	19.926	31.949	23.483	19.926	14:20'45.287
5	27.259	31.762	22.990	19.728	1'41.739	274,8	14:01'12.578	4	27.537	31.949	23.483	19.926	31.949	23.483	19.926	14:20'45.287
5	27.241	32.932	23.032	20.132	1'43.337	270,7	13:59'30.839	4	27.537	31.949	23.483	19.926	31.949	23.483	19.926	14:20'45.287
5	27.288	31.693	23.361	19.898	1'42.240	268,0	14:01'06.578	4	27.537	31.949	23.483	19.926	31.949	23.483	19.926	14:20'45.287
5	27.288	31.693	23.361	19.898	1'42.240	268,0	14:01'06.578	4	27.537	31.949	23.483	19.926	31.949	23.483	19.926	14:20'45.287
6	29.068	34.046	24.324	32.613	2'00.051P	268,7	14:05'15.421	4	27.537	31.949	23.483	19.926	31.949	23.483	19.926	14:20'45.287
6	27.153	31.431	23.046	19.920	1'41.550	266,7	14:02'48.128	4	27.537	31.949	23.483	19.926	31.949	23.483	19.926	14:20'45.287
6	27.153	31.431	23.046	19.920	1'41.550	266,7	14:02'48.128	4	27.537	31.949	23.483	19.926	31.949	23.483	19.926	14:20'45.287
6	27.153	31.431	23.046	19.920	1'41.550	266,7	14:02'48.128	4	27.537	31.949	23.483	19.926	31.949	23.483	19.926	14:20'45.287
6	27.153	31.431	23.046	19.920	1'41.550	266,7	14:02'48.128	4	27.537	31.949	23.483	19.926	31.949	23.483	19.926	14:20'45.287
7	27.018	31.055	22.682	19.624	1'40.379	265,3	14:16'13.791	4	27.537	31.949	23.483	19.926	31.949	23.483	19.926	14:20'45.287
7	26.717	31.170	22.796	19.696	1'40.379	274,1	14:10'25.328	4	27.537	31.949	23.483	19.926	31.949	23.483	19.926	14:20'45.287
7	26.717	31.170	22.796	19.696	1'40.379	274,1	14:10'25.328	4	27.537	31.949	23.483	19.926	31.949	23.483	19.926	14:20'45.287
7	26.717	31.170	22.796	19.696	1'40.379	274,1	14:10'25.328	4	27.537	31.949	23.483	19.926	31.949	23.483	19.926	14:20'45.287
7	26.717	31.170	22.796	19.696	1'40.379	274,1	14:10'25.328	4	27.537	31.949	23.483	19.926	31.949	23.483	19.926	14:20'45.287
8	7'57.802	34.884	24.438	20.867	9'17.991P		14:14'33.412	4	27.537	31.949	23.483	19.926	31.949	23.483	19.926	14:20'45.287
8	26.747	31.177	22.677	19.834	1'40.435	273,4	14:12'05.763	4	27.537	31.949	23.483	19.926	31.949	23.483	19.926	14:20'45.287
8	26.747	31.177	22.677	19.834	1'40.435	273,4	14:12'05.763	4	27.537	31.949	23.483	19.926	31.949	23.483	19.926	14:20'45.287
8	26.747	31.177	22.677	19.834	1'40.435	273,4	14:12'05.763	4	27.537	31.949	23.483	19.926	31.949	23.483	19.926	14:20'45.287
8	26.747	31.177	22.677	19.834	1'40.435	273,4	14:12'05.763	4	27.537	31.949	23.483	19.926	31.949	23.483	19.926	14:20'45.287
9	27.018	31.055	22.682	19.624	1'40.379	265,3	14:16'13.791	4	27.537	31.949	23.483	19.926	31.949	23.483	19.926	14:20'45.287
9	26.662	31.161	22.723	19.760	1'40.306	273,4	14:13'46.069	4	27.537	31.949	23.483	19.926	31.949	23.483	19.926	14:20'45.287
9	26.662	31.161	22.723	19.760	1'40.306	273,4	14:13'46.069	4	27.537	31.949	23.483	19.926	31.949	23.483	19.926	14:20'45.287
9	26.662	31.161	22.723	19.760	1'40.306	273,4	14:13'46.069	4	27.537	31.949	23.483	19.926	31.949	23.483	19.926	14:20'45.287
9	26.662	31.161	22.723	19.760	1'40.306	273,4	14:13'46.069	4	27.537	31.949	23.483	19.926	31.949	23.483	19.926	14:20'45.287
10	26.769	31.030	22.711	19.622	1'40.132	268,0	14:17'53.923	4	27.537	31.949	23.483	19.926	31.949	23.483	19.926	14:20'45.287
10	26.769	31.030	22.711	19.622	1'40.132	268,0	14:17'53.923	4	27.537	31.949	23.483	19.926	31.949	23.483	19.926	14:20'45.287
10	26.769	31.030	22.711	19.622	1'40.132	268,0	14:17'53.923	4	27.537	31.949	23.483	19.926	31.949	23.483	19.926	14:20'45.287
10	26.769	31.030	22.711	19.622	1'40.132	268,0	14:17'53.923	4	27.537	31.949	23.483	19.926	31.949	23.483	19.926	14:20'45.287
10	26.769	31.030	22.711	19.622	1'40.132	268,0	14:17'53.923	4	27.537	31.949	23.483	19.926	31.949	23.483	19.926	14:20'45.287
11	30.440	34.177	24.110	20.389	1'49.116	268,7	14:19'43.039	4	27.537	31.949	23.483	19.926	31.949	23.483	19.926	14:20'45.287
11	30.440	34.177	24.110	20.389	1'49.116	268,7	14:19'43.039	4	27.537	31.949	23.483	19.926	31.949	23.483	19.926	14:20'45.287
11	30.440	34.177	24.110	20.389	1'49.116	268,7	14:19'43.039	4	27.537	31.949	23.483	19.926	31.949	23.483	19.926	14:20'45.287
11	30.440	34.177	24.110	20.389	1'49.116	268,7	14:19'43.039	4	27.537	31.949	23.483	19.926	31.949	23.483	19.926	14:20'45.287
11	30.440	34.177	24.110	20.389	1'49.116	268,7	14:19'43.039	4	27.537	31.949	23.483	19.926	31.949	23.483	19.926	14:20'45.287
12	27.082	31.247	22.838	19.643	1'40.8											



3.5

STK1000  
120/06



Lausitzring 4.265 m

### German Round, 18-19-20 August 2017

#### Superstock 1000 - Chronological Analysis Free Practice 2nd Session

3 / 4

3	27.630	31.999	23.354	20.197	1'43.180	264,7	13:57'05.678	2	27.644	32.304	23.572	20.344	1'43.864	263,4	13:55'31.787
4	27.864	31.804	23.508	20.078	1'43.254	258,9	13:58'48.932	3	27.586	31.985	23.580	20.346	1'43.497	264,7	13:57'15.284
5	28.409	32.077	23.447	20.330	1'44.263	<b>271,4</b>	14:00'33.195	4	27.514	32.077	<b>23.297</b>	20.290	1'43.178	265,3	13:58'58.462
6	1'07.999	34.357	23.976	31.289	2'37.621CP	267,3	14:03'10.816	5	27.501	32.005	23.345	20.176	1'43.027	264,0	14:00'41.489
7	3'37.173	33.144	23.844	20.665	4'54.826P		14:08'05.642	6	27.619	34.780	23.865	20.419	1'46.683	266,0	14:02'28.172
8	28.129	32.093	23.359	20.141	1'43.722	266,7	14:09'49.364	7	28.337	33.281	24.918	30.844	1'57.380P	264,0	14:04'25.552
9	27.927	31.949	23.546	20.003	1'43.425	262,1	14:11'32.789	8	5'08.216	32.896	26.288	20.432	6'27.832P		14:10'53.384
10	<b>27.574</b>	31.884	23.214	20.048	1'42.720	269,3	14:13'15.509	9	27.409	32.306	23.526	<b>20.120</b>	1'43.361	263,4	14:12'36.745
11	27.708	<b>31.727</b>	23.371	20.128	1'42.934	269,3	14:14'58.443	10	<b>27.343</b>	31.806	23.434	20.182	1'42.765	263,4	14:14'19.510
12	31.406	38.536	23.464	20.287	1'53.693	268,7	14:16'52.136	11	27.363	31.823	24.093	31.299	1'54.578P	266,0	14:16'14.088
13	27.718	31.832	23.314	20.127	1'42.991	267,3	14:18'35.127	12	1'35.515	32.094	23.376	20.232	2'51.217P		14:19'05.305
14	27.619	31.769	<b>22.962</b>	<b>19.964</b>	<b>1'42.314</b>	269,3	14:20'17.441	13	27.483	<b>31.685</b>	23.345	20.185	<b>1'42.698</b>	<b>266,7</b>	14:20'48.003

19° 18 R. CECCHINI (1'42.359)							
Lap	Seg.1	Seg.2	Seg.3	Seg.4	Lap Time	km/h	Local Time
1	28.510	33.682	24.259	20.879			13:53'15.769
2	28.190	32.521	23.619	20.363	1'45.013	260,8	13:55'00.782
3	28.325	32.238	23.745	20.246	1'44.419	263,4	13:56'45.201
4	27.764	32.049	23.319	19.998	1'43.691	264,0	13:58'28.892
5	27.644	32.195	23.518	20.132	1'43.609	263,4	14:00'12.501
6	29.242	32.995	24.796	32.394	2'01.321P	264,7	14:02'13.822
7	9'38.788	36.529	23.866	19.972	10'59.155P		14:13'12.977
8	27.863	<b>31.777</b>	23.561	19.965	1'43.166	264,0	14:14'56.143
9	27.642	31.833	23.442	19.865	1'42.782	265,3	14:16'38.925
10	43.052	33.863	23.591	20.259	2'00.765	265,3	14:18'39.690
11	<b>27.477</b>	32.019	<b>23.091</b>	<b>19.772</b>	<b>1'42.359</b>	<b>266,0</b>	14:20'22.049

23° 51 E. VIONNET (1'43.273)							
Lap	Seg.1	Seg.2	Seg.3	Seg.4	Lap Time	km/h	Local Time
1	28.230	33.113	24.062	20.391			13:51'49.892
2	27.883	32.423	23.537	20.397	1'44.587	266,7	13:53'34.479
3	28.001	32.388	23.708	20.204	1'44.183	267,3	13:55'18.662
4	28.001	32.124	23.627	20.165	1'43.917	265,3	13:57'02.579
5	28.005	32.207	23.738	20.089	1'44.081C	267,3	13:58'46.660
6	28.005	32.371	23.610	20.331	1'44.317	<b>268,0</b>	14:00'30.977
7	27.984	32.023	23.561	20.337	1'43.905	266,7	14:02'14.882
8	28.214	33.020	24.073	30.591	1'55.898P	263,4	14:04'10.780
9	5'10.679	33.048	23.927	20.561	6'28.215P		14:10'38.995
10	27.907	32.213	23.724	20.279	1'44.123	267,3	14:12'23.118
11	<b>27.688</b>	31.941	23.503	<b>20.141</b>	<b>1'43.273</b>	266,0	14:14'06.391
12	27.958	32.062	<b>23.328</b>	20.212	1'43.560	266,7	14:15'49.951
13	27.944	32.297	23.618	20.839	1'44.698	265,3	14:17'34.649
14	28.095	32.137	23.651	20.271	1'44.154	266,0	14:19'18.803
15	27.984	<b>31.940</b>	23.744	20.320	1'43.988	<b>268,0</b>	14:21'02.791

20° 34 X. PINSACH (1'42.605)							
Lap	Seg.1	Seg.2	Seg.3	Seg.4	Lap Time	km/h	Local Time
1	30.349	33.187	24.018	20.446			13:51'58.834
2	28.035	32.619	23.709	20.166	1'46.843	268,7	13:53'45.677
3	27.839	32.167	23.641	20.168	1'44.011	264,0	13:55'29.688
4	27.845	32.221	23.544	20.083	1'43.687	268,0	13:57'13.375
5	27.839	32.281	23.775	20.082	1'43.983	269,3	13:58'57.358
6	27.839	32.298	23.539	19.910	1'43.586	268,7	14:00'40.944
7	27.837	32.164	23.502	20.030	1'43.533	268,7	14:02'24.477
8	29.103	33.961	24.246	30.752	1'58.062P	269,3	14:04'22.539
9	4'14.519	32.039	23.573	19.976	5'30.107P		14:09'52.646
10	<b>27.547</b>	31.935	23.316	20.177	1'42.975	270,0	14:11'35.621
11	27.742	31.814	23.364	19.986	1'42.906	269,3	14:13'18.527
12	27.636	<b>31.755</b>	23.316	<b>19.898</b>	<b>1'42.605</b>	270,7	14:15'01.132
13	28.354	34.452	23.602	20.256	1'46.664	<b>272,7</b>	14:16'47.796
14	28.055	31.995	23.483	20.017	1'43.550	270,7	14:18'31.346
15	27.587	32.127	<b>23.286</b>	19.943	1'42.943	269,3	14:20'14.289

24° 32 M. MOSER (1'43.529)							
Lap	Seg.1	Seg.2	Seg.3	Seg.4	Lap Time	km/h	Local Time
1	28.575	34.902	24.888	21.421			13:52'02.108
2	28.231	32.954	23.995	20.750	1'46.274	257,7	13:53'48.382
3	28.101	32.883	23.928	20.398	1'45.440	256,5	13:55'33.822
4	28.018	32.755	23.641	20.454	1'44.951	260,2	13:57'18.773
5	28.202	32.511	23.583	20.312	1'44.424	259,6	13:59'03.197
6	28.202	36.234	24.362	35.288	2'04.086P	258,3	14:01'07.283
7	4'53.754	34.466	24.307	20.544	6'13.071P		14:07'20.354
8	27.920	32.510	23.415	<b>20.202</b>	1'44.047	259,6	14:09'04.401
9	27.763	32.415	23.250	20.231	1'43.659	259,6	14:10'48.060
10	27.809	32.238	<b>23.224</b>	20.258	<b>1'43.529</b>	<b>261,5</b>	14:12'31.589
11	<b>27.757</b>	32.765	26.991	33.577	2'01.090P	260,2	14:14'32.679
12	1'42.330	35.864	24.027	20.419	3'02.640P		14:17'35.319
13	27.945	32.507	23.462	20.502	1'44.416	258,9	14:19'19.735
14	28.023	<b>32.175</b>	23.515	20.207	1'43.920	<b>261,5</b>	14:21'03.655

21° 6 E. PUSCEDDU (1'42.634)							
Lap	Seg.1	Seg.2	Seg.3	Seg.4	Lap Time	km/h	Local Time
1	33.229	24.085	20.663				13:51'58.069
2	27.881	33.204	23.770	20.418	1'44.373	262,1	13:53'42.442
3	27.673	32.270	24.273	20.364	1'44.580	265,3	13:55'27.022
4	27.515	32.153	23.684	20.352	1'43.704	262,7	13:57'10.726
5	33.667	34.159	25.442	21.097	1'54.365	263,4	13:59'05.091
6	27.762	32.066	23.892	20.316	1'44.036	263,4	14:00'49.127
7	27.563	31.931	24.315	33.034	1'56.843P	262,7	14:02'45.970
8	4'24.796	49.566	25.077	20.753	6'00.192P		14:08'46.162
9	27.646	32.008	23.920	20.324	1'43.898	257,1	14:10'30.060
10	48.988	34.524	23.704	20.187	2'07.403C	<b>268,0</b>	14:12'37.463
11	27.368	31.816	23.501	<b>20.083</b>	1'42.768	264,7	14:14'20.231
12	<b>27.323</b>	<b>31.689</b>	<b>23.359</b>	20.263	<b>1'42.634</b>	266,7	14:16'02.865
13	49.763	48.277	25.690	21.080	2'24.810C	262,7	14:18'27.675
14	27.577	32.070	23.568	20.102	1'43.317	262,1	14:20'10.992

25° 13 F. SANCHIONI (1'44.076)							
Lap	Seg.1	Seg.2	Seg.3	Seg.4	Lap Time	km/h	Local Time
1	32.996	23.849	20.752				13:52'29.433
2	28.565	32.395	23.999	20.775	1'45.734	266,0	13:54'15.167
3	28.506	32.436	24.227	20.535	1'45.704	264,0	13:56'00.871
4	28.101	32.459	23.971	20.691	1'45.222	266,0	13:57'46.093
5	28.270	32.173	23.881	20.289	1'44.613	266,0	13:59'30.706
6	28.243	<b>32.149</b>	23.728	20.395	1'44.515	267,3	14:01'15.221
7	52.318	35.197	25.436	32.183	2'25.134CP	264,7	14:03'40.355
8	8'12.851	37.038	24.014	20.498	9'34.401P		14:13'14.756
9	28.042	32.201	23.955	20.307	1'44.505	266,7	14:14'59.261
10	31.086	33.993	23.924	<b>20.250</b>	1'49.253	<b>270,0</b>	14:16'48.514
11	28.180	32.195	23.690	20.269	1'44.334	266,7	14:18'32.848
12	<b>27.919</b>	32.155	<b>23.687</b>	20.315	<b>1'44.076</b>	266,7	14:20'16.924

22° 77 W. TESSELS (1'42.698)							
Lap	Seg.1	Seg.2	Seg.3	Seg.4	Lap Time	km/h	Local Time
1	33.644	24.304	21.123				13:52'02.395
2	28.719	32.721	23.622	20.466	1'45.528	262,1	13:53'47.923

26° 81 A. BERNARDI (1'44.237)							
Lap	Seg.1	Seg.2	Seg.3	Seg.4	Lap Time	km/h	Local Time
1	33.279	27.171	22.349				13:51'58.319

18/08/2017

P = Pits In/Out - C = Lap-Time Cancelled

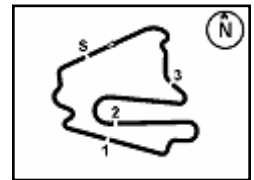
These data/results cannot be reproduced, stored and/or transmitted in whole or in part by any manner of electronic, mechanical, photocopying, recording, broadcasting or otherwise now known or herein after developed without the previous express consent by the copyright owner, except for reproduction in daily press and regular printed publications on sale to the public within 60 days of the event related to those data/results and always provided that copyright symbol appears together as follows below.

© DORNA WSBK ORGANIZATION Srl 2017

FIAT PERUGIA TIMING







## German Round, 18-19-20 August 2017

### Superstock 1000 - Chronological Analysis Free Practice 2nd Session

1	28.262	32.204	23.836	20.413	1'44.715	260,8	13:53'43.034
2	27.819	32.326	24.042	20.374	1'44.561	<b>264,0</b>	13:55'27.595
3	27.841	<b>32.156</b>	23.906	<b>20.334</b>	<b>1'44.237</b>	262,7	13:57'11.832
4	58.774				3'08.101CP	262,1	14:00'19.933
5	1'41.586	34.329	24.810	21.218	3'01.943P		14:03'21.876
6	28.472	32.803	<b>23.760</b>	20.768	1'45.803	260,8	14:05'07.679
7	27.798	32.479	23.873	21.235	1'45.385	260,8	14:06'53.064
8	27.862	32.412	23.871	20.522	1'44.667	258,9	14:08'37.731
9	<b>27.738</b>	32.379	26.683	34.937	2'01.737P	259,6	14:10'39.468
10	5'33.689	34.538	24.964	20.749	6'53.940P		14:17'33.408
11	27.746	32.232	23.885	20.521	1'44.384	260,8	14:19'17.792
12	27.836	32.466	23.935	20.586	1'44.823	261,5	14:21'02.615

**27° 46 M. CUDEVILLE (1'44.611)**

Lap	Seg.1	Seg.2	Seg.3	Seg.4	Lap Time	km/h	Local Time
		34.396	24.786	21.650			13:52'07.867
1	29.141	32.959	24.123	21.183	1'47.406	260,2	13:53'55.273
2	28.666	32.810	24.386	21.169	1'47.031	260,2	13:55'42.304
3	31.005	42.046	24.334	21.114	1'58.499	261,5	13:57'40.803
4	28.553	32.995	24.301	20.562	1'46.411	258,9	13:59'27.214
5	28.733	33.139	24.300	29.100	1'55.272P	262,7	14:01'22.486
6	4'49.934	33.814	24.450	21.221	6'09.419P		14:07'31.905
7	28.348	32.389	23.992	20.648	1'45.377	257,7	14:09'17.282
8	28.176	32.479	23.801	<b>20.553</b>	1'45.009		14:11'02.291
9	30.933	33.455	24.497	32.192	2'01.077P	262,1	14:13'03.368
10	3'25.771	33.368	24.425	21.090	4'44.654P		14:17'48.022
11	28.302	32.470	24.442	21.098	1'46.312	<b>264,0</b>	14:19'34.334
12	<b>28.083</b>	<b>32.138</b>	<b>23.680</b>	20.710	<b>1'44.611</b>	262,7	14:21'18.945

**28° 25 W. SULIS (1'45.498)**

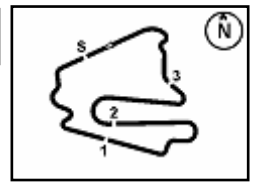
Lap	Seg.1	Seg.2	Seg.3	Seg.4	Lap Time	km/h	Local Time
		33.978	24.599	21.033			13:52'08.379
1	28.862	33.425	24.106	20.788	1'47.181	261,5	13:53'55.560
2	28.693	33.291	24.232	20.600	1'46.816	266,0	13:55'42.376
3	58.911	33.966	24.108	20.650	2'17.635C	266,7	13:58'00.011
4	28.794	34.416	25.236	36.701	2'05.147P	264,0	14:00'05.158
5	3'21.233	35.538	25.584	21.161	4'43.516P		14:04'48.674
6	45.706	37.841	24.308	20.851	2'08.706C	264,7	14:06'57.380
7	28.899	33.166	24.263	20.695	1'47.023	264,7	14:08'44.403
8	<b>28.446</b>	32.578	24.087	<b>20.387</b>	<b>1'45.498</b>	260,8	14:10'29.901
9	45.876	40.647	24.349	20.803	2'11.675C	<b>268,0</b>	14:12'41.576
10	50.587	38.563	26.274	20.582	2'16.006C	266,7	14:14'57.582
11	28.615	<b>32.575</b>	23.988	20.413	1'45.591	262,1	14:16'43.173
12	49.348	39.586	24.479	21.302	2'14.715C	<b>268,0</b>	14:18'57.888
13	28.795	32.782	<b>23.882</b>	20.435	1'45.894	263,4	14:20'43.782

18/08/2017

P = Pits In/Out - C = Lap-Time Cancelled

These data/results cannot be reproduced, stored and/or transmitted in whole or in part by any manner of electronic, mechanical, photocopying, recording, broadcasting or otherwise now known or herein after developed without the previous express consent by the copyright owner, except for reproduction in daily press and regular printed publications on sale to the public within 60 days of the event related to those data/results and always provided that copyright symbol appears together as follows below.

© DORNA WSBK ORGANIZATION Srl 2017

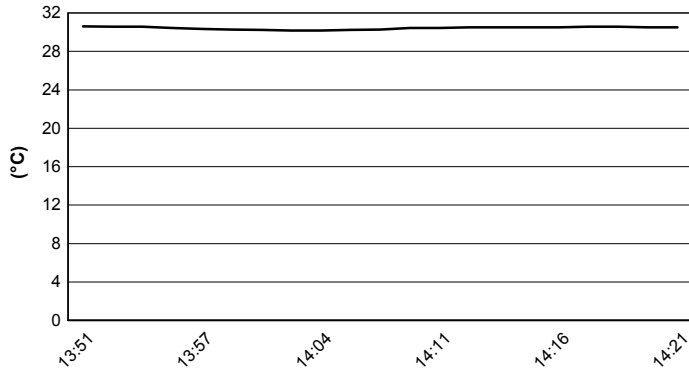


Lausitzring 4.265 m

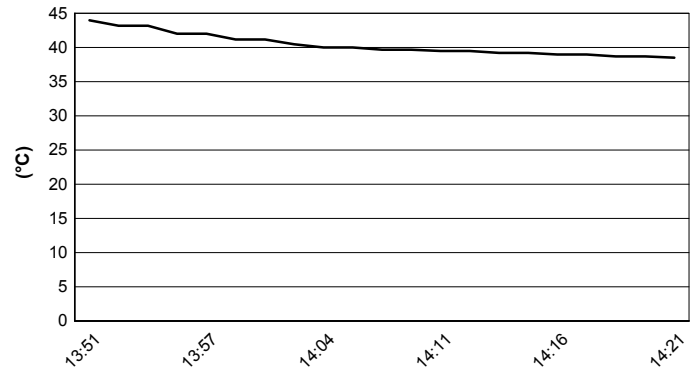
**German Round, 18-19-20 August 2017**  
**Superstock 1000 - Weather Report Free Practice 2nd Session**

Session started 13:50      Session ended 14:22

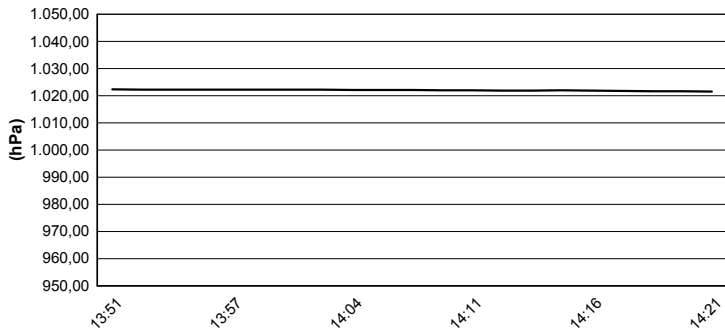
**Air Temperature**



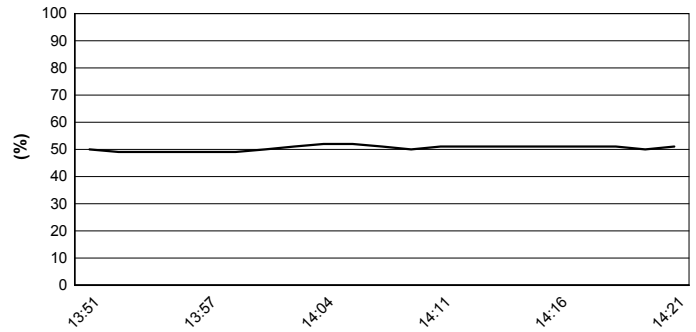
**Track Temperature**



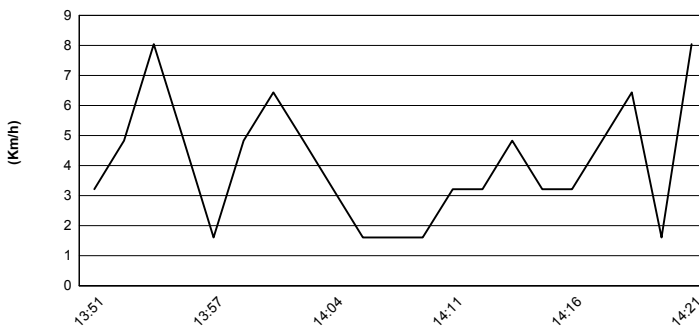
**Air Pressure**



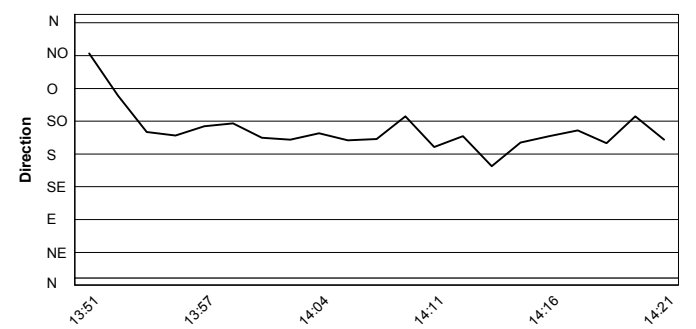
**Humidity**



**Wind Speed**



**Wind Direction**



18/08/2017

These data/results cannot be reproduced, stored and/or transmitted in whole or in part by any manner of electronic, mechanical, photocopying, recording, broadcasting or otherwise now known or herein after developed without the previous express consent by the copyright owner, except for reproduction in daily press and regular printed publications on sale to the public within 60 days of the event related to those data/results and always provided that copyright symbol appears together as follows below.

© DORNA WSBK ORGANIZATION Srl 2017



Official Tyre Supplier



Official Timekeeper