

Imola Circuit 4.936 m

1 / 2

## Italian Round, 12-13-14 May 2017

### World Supersport - Results Superpole 1

| No. | Rider                | Nat | Team                                 | Bike                | Class | Time            | Gap    | Rel.  | Laps | Speed   |              |
|-----|----------------------|-----|--------------------------------------|---------------------|-------|-----------------|--------|-------|------|---------|--------------|
|     |                      |     |                                      |                     |       |                 |        |       |      | Avg     | Max          |
| 1*  | 77 K. RYDE           | GBR | Kawasaki Puccetti Racing             | Kawasaki ZX-6R      |       | <b>1'52.439</b> |        |       | 5    | 158,038 | <b>246,2</b> |
| 2*  | 84 L. CRESSON        | BEL | SC Racing-RPM84                      | Yamaha YZF R6       |       | <b>1'52.729</b> | 0.290  | 0.290 | 6    | 157,631 | <b>248,5</b> |
| 3   | 14 J. KENNEDY        | IRL | Profile Racing                       | Triumph Daytona 675 |       | <b>1'52.793</b> | 0.354  | 0.064 | 6    | 157,542 | <b>241,8</b> |
| 4   | 66 N. TUULI          | FIN | Kallio Racing                        | Yamaha YZF R6       |       | <b>1'52.803</b> | 0.364  | 0.010 | 8    | 157,528 | <b>249,7</b> |
| 5   | 47 R. HARTOG         | NED | Team Hartog - Jenik - Against Cancer | Kawasaki ZX-6R      | ESS   | <b>1'52.907</b> | 0.468  | 0.104 | 7    | 157,383 | <b>244,6</b> |
| 6   | 44 R. ROLFO          | ITA | Team Factory Vamag                   | MV Agusta F3 675    |       | <b>1'52.946</b> | 0.507  | 0.039 | 6    | 157,328 | <b>238,6</b> |
| 7   | 38 H. SOOMER         | EST | WILSport Racedays                    | Honda CBR600RR      | ESS   | <b>1'53.110</b> | 0.671  | 0.164 | 6    | 157,100 | <b>241,8</b> |
| 8   | 81 L. STAPLEFORD     | GBR | Profile Racing                       | Triumph Daytona 675 |       | <b>1'53.127</b> | 0.688  | 0.017 | 5    | 157,077 | <b>240,8</b> |
| 9   | 4 G. REA             | GBR | Team Kawasaki Go Eleven              | Kawasaki ZX-6R      |       | <b>1'53.204</b> | 0.765  | 0.077 | 7    | 156,970 | <b>242,9</b> |
| 10  | 13 A. WEST           | AUS | EAB West Racing                      | Yamaha YZF R6       |       | <b>1'53.333</b> | 0.894  | 0.129 | 5    | 156,791 | <b>242,9</b> |
| 11  | 26 K. WATANABE       | JPN | Team Kawasaki Go Eleven              | Kawasaki ZX-6R      |       | <b>1'53.401</b> | 0.962  | 0.068 | 6    | 156,697 | <b>242,4</b> |
| 12  | 65 M. CANDUCCI       | ITA | 3570 Puccetti Racing FMI             | Kawasaki ZX-6R      |       | <b>1'53.514</b> | 1.075  | 0.113 | 5    | 156,541 | <b>246,8</b> |
| 13  | 74 J. VAN SIKKELERUS | NED | MVR Racing                           | Yamaha YZF R6       | ESS   | <b>1'54.127</b> | 1.688  | 0.613 | 8    | 155,700 | <b>242,4</b> |
| 14  | 25 A. BALDOLINI      | ITA | Race Department ATK#25               | MV Agusta F3 675    |       | <b>1'54.235</b> | 1.796  | 0.108 | 5    | 155,553 | <b>244,0</b> |
| 15  | 63 Z. KHAIRUDDIN     | MAS | Orelac Racing VerdNatura             | Kawasaki ZX-6R      |       | <b>1'54.297</b> | 1.858  | 0.062 | 6    | 155,469 | <b>241,8</b> |
| 16  | 70 R. MULHAUSER      | SUI | CIA Landlord Insurance Honda         | Honda CBR600RR      |       | <b>1'54.334</b> | 1.895  | 0.037 | 5    | 155,418 | <b>240,2</b> |
| 17  | 10 N. CALERO         | ESP | Orelac Racing VerdNatura             | Kawasaki ZX-6R      |       | <b>1'54.460</b> | 2.021  | 0.126 | 6    | 155,247 | <b>242,4</b> |
| 18  | 52 M. MALONE         | ITA | Team Green Speed                     | Kawasaki ZX-6R      |       | <b>1'54.696</b> | 2.257  | 0.236 | 7    | 154,928 | <b>242,9</b> |
| 19  | 73 J. CRETARO        | ITA | Phoenix Suzuki Racing                | Suzuki GSX-R600     | ESS   | <b>1'54.958</b> | 2.519  | 0.262 | 6    | 154,575 | <b>238,6</b> |
| 20  | 83 L. EPIS           | AUS | Response RE Racing                   | Kawasaki ZX-6R      |       | <b>1'55.030</b> | 2.591  | 0.072 | 6    | 154,478 | <b>244,0</b> |
| 21  | 92 H. KUNIKAWA       | JPN | CIA Landlord Insurance Honda         | Honda CBR600RR      | ESS   | <b>1'55.792</b> | 3.353  | 0.762 | 8    | 153,461 | <b>239,7</b> |
| 22  | 122 D. CORRADI       | ITA | SCS Racing Team                      | Kawasaki ZX-6R      |       | <b>1'55.826</b> | 3.387  | 0.034 | 6    | 153,416 | <b>234,5</b> |
| 23  | 9 C. LONDON          | NZL | Phoenix Suzuki Racing                | Suzuki GSX-R600     | ESS   | <b>1'58.569</b> | 6.130  | 2.743 | 5    | 149,867 | <b>233,0</b> |
| 24  | 7 D. PIZZOLI         | ITA | Race Department ATK#25               | MV Agusta F3 675    |       | <b>2'06.745</b> | 14.306 | 8.176 | 4    | 140,200 | <b>240,2</b> |
| 25  | 56 P. SEBESTYÉN      | HUN | SSP Hungary by Pedercini Racing      | Kawasaki ZX-6R      | ESS   |                 |        |       | 0    |         |              |
| 26  | 48 G. SCARCELLA      | AUS | GEMAR Team Lorini                    | Honda CBR600RR      |       |                 |        |       | 1    |         | <b>238,6</b> |

\* Qualified to Superpole 2

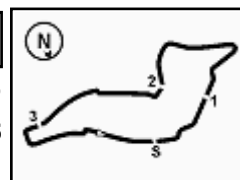
|       |            |     |       |      |
|-------|------------|-----|-------|------|
| AIR   | Humidity:  | 44% | Temp: | 25°C |
| TRACK | Condition: | Dry | Temp: | 44°C |

|         |           |               |          |         |      |
|---------|-----------|---------------|----------|---------|------|
| Records | Pole      | 2013 S.Lowes  | 1'50.404 | 160,950 | Km/h |
|         | Race (RC) | 2015 J.Cluzel | 1'51.101 | 159,940 | Km/h |
|         | Circuit   | 2013 S.Lowes  | 1'50.404 | 160,950 | Km/h |

Start 13/05/2017 14:00 End 14:16 The results are provisional until the end of the time limit for protests and appeals and the completion of the technical checks.

These data/results cannot be reproduced, stored and/or transmitted in whole or in part by any manner of electronic, mechanical, photocopying, recording, broadcasting or otherwise now known or herein after developed without the previous express consent by the copyright owner, except for reproduction in daily press and regular printed publications on sale to the public within 60 days of the event related to those data/results and always provided that copyright symbol appears together as follows below.

© DORNA WSBK ORGANIZATION Srl 2017



## Italian Round, 12-13-14 May 2017

### World Supersport - Results Superpole 1

#### Session Highlights

| Local Time | No. Rider            | Description  |
|------------|----------------------|--|
| 14.00.00   |                      | Start  |
| 14.03.08   | 48 G. SCARCELLA      | Crashed - Turn 6                                       |
| 14.03.32   | 74 J. VAN SIKKELERUS | Lap Cancelled - Exit Track Limits - Turn 15            |
| 14.03.37   | 52 M. MALONE         | Lap Cancelled - Exit Track Limits - Turn 15            |
| 14.04.10   | 38 H. SOOMER         | On the Gravel - Re-Joined - Turn 8                     |
| 14.04.55   | 122 D. CORRADI       | On the Gravel - Re-Joined - Turn 18                    |
| 14.05.42   | 13 A. WEST           | On the Gravel - Re-Joined - Turn 18                    |
| 14.12.09   | 13 A. WEST           | Technical Problem - Turn 5                             |
| 14.15.17   | 38 H. SOOMER         | Lap Cancelled (1'54.766) - Exit Track Limits - Turn 22 |
| 14.15.38   | 38 H. SOOMER         | On the Gravel - Re-Joined - Turn 18                    |
| 14.16.56   |                      | End Of Session   |

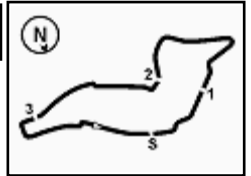
#### Fastest Laps Sequence

| No. | Rider         | Nat | Team                     | Bike                | Local Time   | Time            | Gap    | Avg     |
|-----|---------------|-----|--------------------------|---------------------|--------------|-----------------|--------|---------|
| 84  | L. CRESSON    | BEL | SC Racing-RPM84          | Yamaha YZF R6       | 14:03'57.607 | <b>1'54.201</b> |        | 155,599 |
| 13  | A. WEST       | AUS | EAB West Racing          | Yamaha YZF R6       | 14:04'02.051 | <b>1'54.016</b> | -0.185 | 155,852 |
| 66  | N. TUULI      | FIN | Kallio Racing            | Yamaha YZF R6       | 14:04'21.673 | <b>1'53.684</b> | -0.332 | 156,307 |
| 81  | L. STAPLEFORD | GBR | Profile Racing           | Triumph Daytona 675 | 14:04'53.135 | <b>1'53.415</b> | -0.269 | 156,678 |
| 14  | J. KENNEDY    | IRL | Profile Racing           | Triumph Daytona 675 | 14:04'53.709 | <b>1'52.934</b> | -0.481 | 157,345 |
| 14  | J. KENNEDY    | IRL | Profile Racing           | Triumph Daytona 675 | 14:06'46.502 | <b>1'52.793</b> | -0.141 | 157,542 |
| 84  | L. CRESSON    | BEL | SC Racing-RPM84          | Yamaha YZF R6       | 14:15'29.445 | <b>1'52.729</b> | -0.064 | 157,631 |
| 77  | K. RYDE       | GBR | Kawasaki Puccetti Racing | Kawasaki ZX-6R      | 14:15'53.109 | <b>1'52.439</b> | -0.290 | 158,038 |

Start 13/05/2017 14:00 End 14:16 The results are provisional until the end of the time limit for protests and appeals and the completion of the technical checks.

These data/results cannot be reproduced, stored and/or transmitted in whole or in part by any manner of electronic, mechanical, photocopying, recording, broadcasting or otherwise now known or herein after developed without the previous express consent by the copyright owner, except for reproduction in daily press and regular printed publications on sale to the public within 60 days of the event related to those data/results and always provided that copyright symbol appears together as follows below.

© DORNA WSBK ORGANIZATION Srl 2017



Imola Circuit 4.936 m

## Italian Round, 12-13-14 May 2017

### World Supersport - Best Sector & Speed Superpole 1

#### BEST LAP

|    |                      |                     |          |
|----|----------------------|---------------------|----------|
| 1  | 77 K. RYDE           | Kawasaki ZX-6R      | 1'52.439 |
| 2  | 84 L. CRESSON        | Yamaha YZF R6       | 1'52.729 |
| 3  | 14 J. KENNEDY        | Triumph Daytona 675 | 1'52.793 |
| 4  | 66 N. TUULI          | Yamaha YZF R6       | 1'52.803 |
| 5  | 47 R. HARTOG         | Kawasaki ZX-6R      | 1'52.907 |
| 6  | 44 R. ROLFO          | MV Agusta F3 675    | 1'52.946 |
| 7  | 38 H. SOOMER         | Honda CBR600RR      | 1'53.110 |
| 8  | 81 L. STAPLEFORD     | Triumph Daytona 675 | 1'53.127 |
| 9  | 4 G. REA             | Kawasaki ZX-6R      | 1'53.204 |
| 10 | 13 A. WEST           | Yamaha YZF R6       | 1'53.333 |
| 11 | 26 K. WATANABE       | Kawasaki ZX-6R      | 1'53.401 |
| 12 | 65 M. CANDUCCI       | Kawasaki ZX-6R      | 1'53.514 |
| 13 | 74 J. VAN SIKKELERUS | Yamaha YZF R6       | 1'54.127 |
| 14 | 25 A. BALDOLINI      | MV Agusta F3 675    | 1'54.235 |
| 15 | 63 Z. KHAIRUDDIN     | Kawasaki ZX-6R      | 1'54.297 |
| 16 | 70 R. MULHAUSER      | Honda CBR600RR      | 1'54.334 |
| 17 | 10 N. CALERO         | Kawasaki ZX-6R      | 1'54.460 |
| 18 | 52 M. MALONE         | Kawasaki ZX-6R      | 1'54.696 |
| 19 | 73 J. CRETARO        | Suzuki GSX-R600     | 1'54.958 |
| 20 | 83 L. EPIS           | Kawasaki ZX-6R      | 1'55.030 |
| 21 | 92 H. KUNIKAWA       | Honda CBR600RR      | 1'55.792 |
| 22 | 122 D. CORRADI       | Kawasaki ZX-6R      | 1'55.826 |
| 23 | 9 C. LONDON          | Suzuki GSX-R600     | 1'58.569 |
| 24 | 7 D. PIZZOLI         | MV Agusta F3 675    | 2'06.745 |
| 25 | 48 G. SCARCELLA      | Honda CBR600RR      |          |
| 26 | 56 P. SEBESTYEN      | Kawasaki ZX-6R      |          |

#### SPEED

|    |                      |                     |       |
|----|----------------------|---------------------|-------|
| 1  | 66 N. TUULI          | Yamaha YZF R6       | 249.7 |
| 2  | 84 L. CRESSON        | Yamaha YZF R6       | 248.5 |
| 3  | 65 M. CANDUCCI       | Kawasaki ZX-6R      | 246.8 |
| 4  | 77 K. RYDE           | Kawasaki ZX-6R      | 246.2 |
| 5  | 47 R. HARTOG         | Kawasaki ZX-6R      | 244.6 |
| 6  | 83 L. EPIS           | Kawasaki ZX-6R      | 244.0 |
| 7  | 25 A. BALDOLINI      | MV Agusta F3 675    | 244.0 |
| 8  | 13 A. WEST           | Yamaha YZF R6       | 242.9 |
| 9  | 52 M. MALONE         | Kawasaki ZX-6R      | 242.9 |
| 10 | 4 G. REA             | Kawasaki ZX-6R      | 242.9 |
| 11 | 74 J. VAN SIKKELERUS | Yamaha YZF R6       | 242.4 |
| 12 | 10 N. CALERO         | Kawasaki ZX-6R      | 242.4 |
| 13 | 26 K. WATANABE       | Kawasaki ZX-6R      | 242.4 |
| 14 | 63 Z. KHAIRUDDIN     | Kawasaki ZX-6R      | 241.8 |
| 15 | 14 J. KENNEDY        | Triumph Daytona 675 | 241.8 |
| 16 | 38 H. SOOMER         | Honda CBR600RR      | 241.8 |
| 17 | 81 L. STAPLEFORD     | Triumph Daytona 675 | 240.8 |
| 18 | 70 R. MULHAUSER      | Honda CBR600RR      | 240.2 |
| 19 | 7 D. PIZZOLI         | MV Agusta F3 675    | 240.2 |
| 20 | 92 H. KUNIKAWA       | Honda CBR600RR      | 239.7 |
| 21 | 48 G. SCARCELLA      | Honda CBR600RR      | 238.6 |
| 22 | 73 J. CRETARO        | Suzuki GSX-R600     | 238.6 |
| 23 | 44 R. ROLFO          | MV Agusta F3 675    | 238.6 |
| 24 | 122 D. CORRADI       | Kawasaki ZX-6R      | 234.5 |
| 25 | 9 C. LONDON          | Suzuki GSX-R600     | 233.0 |

| SEG. 1 |                    | SEG. 2 |    | SEG. 3             |        | SEG. 4 |                    | SEG. 5 |    |                    |        |    |                    |        |
|--------|--------------------|--------|----|--------------------|--------|--------|--------------------|--------|----|--------------------|--------|----|--------------------|--------|
| 1      | 84 L. CRESSON      | 8.397  | 1  | 44 R. ROLFO        | 15.702 | 1      | 14 J. KENNEDY      | 34.754 | 1  | 77 K. RYDE         | 29.801 | 1  | 84 L. CRESSON      | 23.226 |
| 2      | 66 N. TUULI        | 8.433  | 2  | 14 J. KENNEDY      | 15.755 | 2      | 84 L. CRESSON      | 34.877 | 2  | 66 N. TUULI        | 29.931 | 2  | 47 R. HARTOG       | 23.313 |
| 3      | 13 A. WEST         | 8.504  | 3  | 38 H. SOOMER       | 15.758 | 3      | 81 L. STAPLEFORD   | 34.905 | 3  | 14 J. KENNEDY      | 29.989 | 3  | 14 J. KENNEDY      | 23.328 |
| 4      | 65 M. CANDUCCI     | 8.514  | 4  | 77 K. RYDE         | 15.767 | 4      | 47 R. HARTOG       | 34.964 | 4  | 44 R. ROLFO        | 30.003 | 4  | 77 K. RYDE         | 23.338 |
| 5      | 47 R. HARTOG       | 8.556  | 5  | 84 L. CRESSON      | 15.768 | 5      | 77 K. RYDE         | 34.975 | 5  | 84 L. CRESSON      | 30.004 | 5  | 44 R. ROLFO        | 23.357 |
| 6      | 14 J. KENNEDY      | 8.557  | 6  | 66 N. TUULI        | 15.799 | 6      | 66 N. TUULI        | 34.978 | 6  | 26 K. WATANABE     | 30.009 | 6  | 81 L. STAPLEFORD   | 23.406 |
| 7      | 77 K. RYDE         | 8.558  | 7  | 47 R. HARTOG       | 15.800 | 7      | 44 R. ROLFO        | 34.983 | 7  | 13 A. WEST         | 30.084 | 7  | 38 H. SOOMER       | 23.408 |
| 8      | 81 L. STAPLEFORD   | 8.559  | 8  | 4 G. REA           | 15.810 | 8      | 4 G. REA           | 34.997 | 8  | 81 L. STAPLEFORD   | 30.090 | 8  | 4 G. REA           | 23.416 |
| 9      | 63 Z. KHAIRUDDIN   | 8.576  | 9  | 13 A. WEST         | 15.828 | 9      | 65 M. CANDUCCI     | 34.998 | 9  | 47 R. HARTOG       | 30.096 | 9  | 74 J. VAN SIKKELER | 23.417 |
| 10     | 25 A. BALDOLINI    | 8.577  | 10 | 65 M. CANDUCCI     | 15.831 | 10     | 38 H. SOOMER       | 35.085 | 10 | 65 M. CANDUCCI     | 30.173 | 10 | 66 N. TUULI        | 23.452 |
| 11     | 4 G. REA           | 8.581  | 11 | 25 A. BALDOLINI    | 15.864 | 11     | 13 A. WEST         | 35.085 | 11 | 38 H. SOOMER       | 30.173 | 11 | 26 K. WATANABE     | 23.512 |
| 12     | 10 N. CALERO       | 8.582  | 12 | 26 K. WATANABE     | 15.913 | 12     | 70 R. MULHAUSER    | 35.236 | 12 | 70 R. MULHAUSER    | 30.239 | 12 | 13 A. WEST         | 23.558 |
| 13     | 74 J. VAN SIKKELER | 8.584  | 13 | 83 L. EPIS         | 15.964 | 13     | 26 K. WATANABE     | 35.290 | 13 | 25 A. BALDOLINI    | 30.269 | 13 | 63 Z. KHAIRUDDIN   | 23.582 |
| 14     | 26 K. WATANABE     | 8.592  | 14 | 81 L. STAPLEFORD   | 15.965 | 14     | 25 A. BALDOLINI    | 35.322 | 14 | 4 G. REA           | 30.275 | 14 | 52 M. MALONE       | 23.618 |
| 15     | 70 R. MULHAUSER    | 8.599  | 15 | 52 M. MALONE       | 15.966 | 15     | 74 J. VAN SIKKELER | 35.435 | 15 | 63 Z. KHAIRUDDIN   | 30.295 | 15 | 10 N. CALERO       | 23.695 |
| 16     | 83 L. EPIS         | 8.619  | 16 | 70 R. MULHAUSER    | 16.034 | 16     | 10 N. CALERO       | 35.443 | 16 | 52 M. MALONE       | 30.486 | 16 | 65 M. CANDUCCI     | 23.729 |
| 17     | 44 R. ROLFO        | 8.627  | 17 | 73 J. CRETARO      | 16.103 | 17     | 63 Z. KHAIRUDDIN   | 35.447 | 17 | 74 J. VAN SIKKELER | 30.494 | 17 | 73 J. CRETARO      | 23.744 |
| 18     | 52 M. MALONE       | 8.641  | 18 | 74 J. VAN SIKKELER | 16.120 | 18     | 83 L. EPIS         | 35.499 | 18 | 10 N. CALERO       | 30.520 | 18 | 70 R. MULHAUSER    | 23.792 |
| 19     | 92 H. KUNIKAWA     | 8.660  | 19 | 10 N. CALERO       | 16.124 | 19     | 73 J. CRETARO      | 35.555 | 19 | 92 H. KUNIKAWA     | 30.541 | 19 | 122 D. CORRADI     | 23.827 |
| 20     | 7 D. PIZZOLI       | 8.669  | 20 | 63 Z. KHAIRUDDIN   | 16.212 | 20     | 52 M. MALONE       | 35.622 | 20 | 73 J. CRETARO      | 30.681 | 20 | 25 A. BALDOLINI    | 23.857 |
| 21     | 38 H. SOOMER       | 8.676  | 21 | 122 D. CORRADI     | 16.268 | 21     | 122 D. CORRADI     | 35.718 | 21 | 122 D. CORRADI     | 30.816 | 21 | 83 L. EPIS         | 23.934 |
| 22     | 48 G. SCARCELLA    | 8.722  | 22 | 92 H. KUNIKAWA     | 16.563 | 22     | 92 H. KUNIKAWA     | 35.837 | 22 | 83 L. EPIS         | 30.838 | 22 | 92 H. KUNIKAWA     | 23.997 |
| 23     | 73 J. CRETARO      | 8.786  | 23 | 7 D. PIZZOLI       | 16.697 | 23     | 9 C. LONDON        | 36.632 | 23 | 9 C. LONDON        | 31.452 | 23 | 9 C. LONDON        | 24.452 |
| 24     | 122 D. CORRADI     | 8.787  | 24 | 48 G. SCARCELLA    | 16.730 | 24     | 7 D. PIZZOLI       | 36.774 | 24 | 7 D. PIZZOLI       | 32.066 | 24 | 7 D. PIZZOLI       | 24.507 |
| 25     | 9 C. LONDON        | 8.918  | 25 | 9 C. LONDON        | 16.742 | 25     | 48 G. SCARCELLA    | 37.750 | 25 | 48 G. SCARCELLA    | 32.505 | 25 | 48 G. SCARCELLA    | 24.796 |

13/05/2017

These data/results cannot be reproduced, stored and/or transmitted in whole or in part by any manner of electronic, mechanical, photocopying, recording, broadcasting or otherwise now known or herein after developed without the previous express consent by the copyright owner, except for reproduction in daily press and regular printed publications on sale to the public within 60 days of the event related to those data/results and always provided that copyright symbol appears together as follows below.

© DORNA WSBK ORGANIZATION Srl 2017

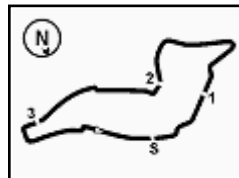
FICR PERUGIA TIMING



Official Tyre Supplier



Official Timekeeper



Imola Circuit 4.936 m

## Italian Round, 12-13-14 May 2017

### World Supersport - Ideal Times Superpole 1

| No.                       | Rider                | Nat | Bike                | Seg. 1         | Seg. 2          | Seg. 3          | Seg. 4          | Seg. 5          | Ideal Time           |      |       |
|---------------------------|----------------------|-----|---------------------|----------------|-----------------|-----------------|-----------------|-----------------|----------------------|------|-------|
|                           |                      |     |                     | Diff. 1        | Diff. 2         | Diff. 3         | Diff. 4         | Diff. 5         | Best Lap             | Pos. | Diff. |
| 1                         | 84 L. CRESSON        | BEL | Yamaha YZF R6       | 8.397<br>0.112 | 15.768          | 34.877<br>0.148 | 30.004          | 23.226<br>0.197 | 1'52.272<br>1'52.729 | 4    | 0.457 |
| 2                         | 14 J. KENNEDY        | IRL | Triumph Daytona 675 | 8.557          | 15.755          | 34.754          | 29.989<br>0.114 | 23.328<br>0.296 | 1'52.383<br>1'52.793 | 5    | 0.410 |
| 3                         | 77 K. RYDE           | GBR | Kawasaki ZX-6R      | 8.558          | 15.767          | 34.975          | 29.801          | 23.338          | 1'52.439<br>1'52.439 | 3    |       |
| 4                         | 66 N. TUULI          | FIN | Yamaha YZF R6       | 8.433<br>0.060 | 15.799          | 34.978          | 29.931<br>0.075 | 23.452<br>0.075 | 1'52.593<br>1'52.803 | 6    | 0.210 |
| 5                         | 44 R. ROLFO          | ITA | MV Agusta F3 675    | 8.627<br>0.104 | 15.702<br>0.151 | 34.983<br>0.019 | 30.003          | 23.357          | 1'52.672<br>1'52.946 | 8    | 0.274 |
| 6                         | 47 R. HARTOG         | NED | Kawasaki ZX-6R      | 8.556<br>0.025 | 15.800          | 34.964          | 30.096<br>0.153 | 23.313          | 1'52.729<br>1'52.907 | 7    | 0.178 |
| 7                         | 81 L. STAPLEFORD     | GBR | Triumph Daytona 675 | 8.559          | 15.965          | 34.905          | 30.090<br>0.035 | 23.406<br>0.167 | 1'52.925<br>1'53.127 | 10   | 0.202 |
| 8                         | 13 A. WEST           | AUS | Yamaha YZF R6       | 8.504<br>0.139 | 15.828<br>0.135 | 35.085          | 30.084          | 23.558          | 1'53.059<br>1'53.333 | 12   | 0.274 |
| 9                         | 4 G. REA             | GBR | Kawasaki ZX-6R      | 8.581<br>0.009 | 15.810<br>0.109 | 34.997          | 30.275<br>0.007 | 23.416          | 1'53.079<br>1'53.204 | 11   | 0.125 |
| 10                        | 38 H. SOOMER         | EST | Honda CBR600RR      | 8.676<br>0.010 | 15.758          | 35.085          | 30.173          | 23.408          | 1'53.100<br>1'53.110 | 9    | 0.010 |
| 11                        | 65 M. CANDUCCI       | ITA | Kawasaki ZX-6R      | 8.514          | 15.831          | 34.998<br>0.078 | 30.173<br>0.128 | 23.729<br>0.063 | 1'53.245<br>1'53.514 | 14   | 0.269 |
| 12                        | 26 K. WATANABE       | JPN | Kawasaki ZX-6R      | 8.592<br>0.085 | 15.913          | 35.290          | 30.009          | 23.512          | 1'53.316<br>1'53.401 | 13   | 0.085 |
| 13                        | 25 A. BALDOLINI      | ITA | MV Agusta F3 675    | 8.577<br>0.007 | 15.864<br>0.059 | 35.322          | 30.269          | 23.857<br>0.280 | 1'53.889<br>1'54.235 | 16   | 0.346 |
| 14                        | 70 R. MULHAUSER      | SUI | Honda CBR600RR      | 8.599<br>0.117 | 16.034          | 35.236<br>0.010 | 30.239          | 23.792<br>0.307 | 1'53.900<br>1'54.334 | 18   | 0.434 |
| 15                        | 74 J. VAN SIKKELERUS | NED | Yamaha YZF R6       | 8.584<br>0.077 | 16.120          | 35.435          | 30.494          | 23.417          | 1'54.050<br>1'54.127 | 15   | 0.077 |
| 16                        | 63 Z. KHAIRUDDIN     | MAS | Kawasaki ZX-6R      | 8.576<br>0.077 | 16.212          | 35.447          | 30.295<br>0.050 | 23.582<br>0.058 | 1'54.112<br>1'54.297 | 17   | 0.185 |
| 17                        | 52 M. MALONE         | ITA | Kawasaki ZX-6R      | 8.641<br>0.056 | 15.966<br>0.285 | 35.622          | 30.486<br>0.022 | 23.618          | 1'54.333<br>1'54.696 | 20   | 0.363 |
| 18                        | 10 N. CALERO         | ESP | Kawasaki ZX-6R      | 8.582<br>0.096 | 16.124          | 35.443          | 30.520          | 23.695          | 1'54.364<br>1'54.460 | 19   | 0.096 |
| 19                        | 83 L. EPIS           | AUS | Kawasaki ZX-6R      | 8.619<br>0.045 | 15.964<br>0.103 | 35.499          | 30.838          | 23.934<br>0.028 | 1'54.854<br>1'55.030 | 22   | 0.176 |
| 20                        | 73 J. CRETARO        | ITA | Suzuki GSX-R600     | 8.786          | 16.103          | 35.555<br>0.089 | 30.681          | 23.744          | 1'54.869<br>1'54.958 | 21   | 0.089 |
| 21                        | 122 D. CORRADI       | ITA | Kawasaki ZX-6R      | 8.787<br>0.084 | 16.268<br>0.100 | 35.718<br>0.153 | 30.816<br>0.073 | 23.827          | 1'55.416<br>1'55.826 | 24   | 0.410 |
| 22                        | 92 H. KUNIKAWA       | JPN | Honda CBR600RR      | 8.660<br>0.010 | 16.563          | 35.837          | 30.541<br>0.184 | 23.997          | 1'55.598<br>1'55.792 | 23   | 0.194 |
| 23                        | 9 C. LONDON          | NZL | Suzuki GSX-R600     | 8.918<br>0.053 | 16.742          | 36.632          | 31.452<br>0.239 | 24.452<br>0.081 | 1'58.196<br>1'58.569 | 25   | 0.373 |
| 24                        | 7 D. PIZZOLI         | ITA | MV Agusta F3 675    | 8.669<br>0.082 | 16.697<br>0.050 | 36.774          | 32.066          | 24.507<br>7.900 | 1'58.713<br>2'06.745 | 26   | 8.032 |
| <b>Overall Ideal Time</b> |                      |     |                     | 8.397          | 15.702          | 34.754          | 29.801          | 23.226          | 1'51.880             |      |       |

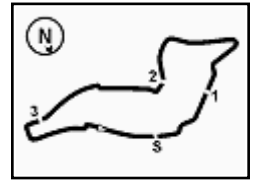
13/05/2017

These data/results cannot be reproduced, stored and/or transmitted in whole or in part by any manner of electronic, mechanical, photocopying, recording, broadcasting or otherwise now known or herein after developed without the previous express consent by the copyright owner, except for reproduction in daily press and regular printed publications on sale to the public within 60 days of the event related to those data/results and always provided that copyright symbol appears together as follows below.

© DORNA WSBK ORGANIZATION Srl 2017







Imola Circuit 4.936 m

**2 / 2**

|   |              |               |               |               |               |                 |              |              |
|---|--------------|---------------|---------------|---------------|---------------|-----------------|--------------|--------------|
| 1 | 13.762       | 19.664        | 37.473        | 31.789        | 28.408        | 2'11.096 P      | 188.9        | 14:00'18.217 |
| 2 | 8.716        | <b>16.034</b> | 35.246        | <b>30.239</b> | 24.099        | <b>1'54.334</b> | <b>240.2</b> | 14:02'29.313 |
| 3 | 8.623        | 16.112        | <b>35.236</b> | 30.537        | 23.845        | 1'54.353        | <b>240.2</b> | 14:04'23.647 |
| 4 | <b>8.599</b> | 17.186        | 36.688        | 31.246        | 2'12.811      | 3'46.530 P      | 236.0        | 14:06'18.000 |
| 5 | 15.845       | 21.649        | 36.596        | 33.028        | <b>23.792</b> | 2'10.910 P      | 138.3        | 14:12'15.440 |

| 17° 10 N. CALERO (1'54.460) |              |               |               |               |               |                 |              |              |
|-----------------------------|--------------|---------------|---------------|---------------|---------------|-----------------|--------------|--------------|
| Lap                         | Seg. 1       | Seg. 2        | Seg. 3        | Seg. 4        | Seg. 5        | Lap Time        | km/h         | Local Time   |
| 1                           | 13.491       | 17.099        | 37.976        | 32.436        | 24.386        | 2'05.388 P      | 192.3        | 14:00'01.499 |
| 2                           | <b>8.582</b> | 16.199        | 35.590        | 31.796        | 24.038        | 1'56.205        | <b>242.4</b> | 14:02'06.887 |
| 3                           | 8.678        | <b>16.124</b> | <b>35.443</b> | <b>30.520</b> | <b>23.695</b> | <b>1'54.460</b> | 241.3        | 14:04'03.092 |
| 4                           | 8.640        | 17.827        | 38.941        | 34.789        | 3'17.750      | 4'57.947 P      | 238.6        | 14:05'55.552 |
| 5                           | 14.604       | 20.248        | 38.833        | 36.788        | 30.535        | 2'21.008 P      | 131.9        | 14:10'55.499 |
| 6                           | 8.878        | 16.296        | 35.642        | 30.570        | 24.048        | 1'55.434        | 235.0        | 14:13'16.507 |
|                             |              |               |               |               |               |                 |              | 14:15'11.941 |

| 18° 52 M. MALONE (1'54.696) |              |               |               |               |               |                 |              |              |
|-----------------------------|--------------|---------------|---------------|---------------|---------------|-----------------|--------------|--------------|
| Lap                         | Seg. 1       | Seg. 2        | Seg. 3        | Seg. 4        | Seg. 5        | Lap Time        | km/h         | Local Time   |
| 1                           | 13.257       | 18.729        | 37.097        | 31.042        | 24.010        | 2'04.135 P      | 190.9        | 14:00'12.093 |
| 2                           | 8.652        | 16.641        | 36.827        | 36.238        | 24.660        | 2'03.018 C      | 240.2        | 14:02'16.228 |
| 3                           | <b>8.641</b> | 16.128        | 35.959        | 30.956        | 24.404        | 1'56.088        | 241.3        | 14:04'19.246 |
| 4                           | 9.255        | 16.385        | 36.180        | 36.494        | 2'34.745      | 4'13.059 P      | 236.5        | 14:06'15.334 |
| 5                           | 16.810       | 20.276        | 42.197        | 31.237        | 23.772        | 2'14.292 P      |              | 14:10'28.393 |
| 6                           | 8.697        | 16.251        | <b>35.622</b> | 30.508        | <b>23.618</b> | <b>1'54.696</b> | 241.3        | 14:12'42.685 |
| 7                           | 8.648        | <b>15.966</b> | 35.734        | <b>30.486</b> | 24.255        | 1'55.089        | <b>242.9</b> | 14:14'37.381 |
|                             |              |               |               |               |               |                 |              | 14:16'32.470 |

| 19° 73 J. CRETARO (1'54.958) |              |               |               |               |               |                 |              |              |
|------------------------------|--------------|---------------|---------------|---------------|---------------|-----------------|--------------|--------------|
| Lap                          | Seg. 1       | Seg. 2        | Seg. 3        | Seg. 4        | Seg. 5        | Lap Time        | km/h         | Local Time   |
| 1                            | 13.983       | 18.794        | 36.989        | 31.390        | 24.221        | 2'05.377 P      | 145.6        | 14:00'09.362 |
| 2                            | 8.891        | 16.226        | 35.584        | 31.383        | 23.950        | 1'56.034        | 238.1        | 14:02'14.739 |
| 3                            | 8.856        | 16.167        | <b>35.555</b> | 30.777        | 23.865        | 1'55.220        | <b>238.6</b> | 14:04'10.773 |
| 4                            | 8.886        | 16.188        | 36.070        | 31.200        | 4'13.237      | 5'45.581 P      | 236.5        | 14:06'05.993 |
| 5                            | 14.984       | 18.147        | 37.190        | 31.245        | 24.397        | 2'05.963 P      | 159.3        | 14:11'51.574 |
| 6                            | <b>8.786</b> | <b>16.103</b> | 35.644        | <b>30.681</b> | <b>23.744</b> | <b>1'54.958</b> | 236.5        | 14:13'57.537 |
|                              |              |               |               |               |               |                 |              | 14:15'52.495 |

| 20° 83 L. EPIS (1'55.030) |              |               |               |               |               |                 |              |              |
|---------------------------|--------------|---------------|---------------|---------------|---------------|-----------------|--------------|--------------|
| Lap                       | Seg. 1       | Seg. 2        | Seg. 3        | Seg. 4        | Seg. 5        | Lap Time        | km/h         | Local Time   |
| 1                         |              | 18.051        | 37.661        | 32.918        | 24.296        |                 | 184.1        | 14:00'03.870 |
| 2                         | <b>8.619</b> | 16.275        | 36.107        | 30.969        | 24.280        | 1'56.250        | <b>244.0</b> | 14:02'03.120 |
| 3                         | 8.847        | 16.059        | 35.827        | 30.949        | <b>23.934</b> | 1'55.616        | 240.2        | 14:04'00.120 |
| 4                         | 8.664        | 16.067        | <b>35.499</b> | <b>30.838</b> | 23.962        | <b>1'55.030</b> | 241.8        | 14:05'55.736 |
| 5                         | 8.691        | 16.624        | 36.217        | 31.581        | 1'46.235      | 3'19.348 P      | 238.1        | 14:07'50.766 |
| 6                         | 13.075       | 21.139        | 38.367        | 33.398        | 24.607        | 2'10.586 P      | 194.3        | 14:11'10.114 |
| 7                         | 8.783        | <b>15.964</b> | 35.716        | 31.057        | 26.137        | 1'57.657        | 241.8        | 14:13'20.700 |
|                           |              |               |               |               |               |                 |              | 14:15'18.357 |

| 21° 92 H. KUNIKAWA (1'55.792) |              |               |               |               |               |                 |              |              |
|-------------------------------|--------------|---------------|---------------|---------------|---------------|-----------------|--------------|--------------|
| Lap                           | Seg. 1       | Seg. 2        | Seg. 3        | Seg. 4        | Seg. 5        | Lap Time        | km/h         | Local Time   |
| 1                             | 13.173       | 18.712        | 39.641        | 32.494        | 26.794        | 2'10.814 P      | 167.0        | 14:00'04.900 |
| 2                             | 8.846        | 16.947        | 36.575        | 34.396        | 27.907        | 2'04.671        | 225.2        | 14:02'15.714 |
| 3                             | 8.675        | 16.747        | 36.104        | 30.901        | 24.347        | 1'56.774        | 238.1        | 14:04'20.385 |
| 4                             | <b>8.660</b> | 16.630        | 36.246        | 30.986        | 24.429        | 1'56.951        | <b>239.7</b> | 14:06'17.159 |
| 5                             | 8.745        | 17.243        | 37.907        | 31.025        | 24.051        | 1'58.971        | 236.0        | 14:08'14.110 |
| 6                             | 8.684        | 16.774        | 36.405        | 30.754        | 24.136        | 1'56.753        | 238.1        | 14:10'13.081 |
| 7                             | 8.670        | <b>16.563</b> | <b>35.837</b> | 30.725        | <b>23.997</b> | <b>1'55.792</b> | 239.1        | 14:12'09.834 |
| 8                             | 8.799        | 16.594        | 35.917        | <b>30.541</b> | 24.047        | 1'55.898        | 237.6        | 14:14'05.626 |
|                               |              |               |               |               |               |                 |              | 14:16'01.524 |

| 22° 122 D. CORRADI (1'55.826) |              |               |               |               |               |                 |              |              |
|-------------------------------|--------------|---------------|---------------|---------------|---------------|-----------------|--------------|--------------|
| Lap                           | Seg. 1       | Seg. 2        | Seg. 3        | Seg. 4        | Seg. 5        | Lap Time        | km/h         | Local Time   |
| 1                             | 13.236       | 18.178        | 37.756        | 32.086        | 24.363        | 2'05.619 P      | 179.5        | 14:00'56.485 |
| 2                             | <b>8.787</b> | 16.558        | 36.253        | <b>30.816</b> | 4'21.190      | 5'53.604 P      | 232.4        | 14:03'02.104 |
| 3                             | 14.520       | 17.746        | 37.044        | 30.959        | 23.924        | 2'04.193 P      | 187.3        | 14:08'55.708 |
| 4                             | 8.927        | 16.477        | 35.961        | 30.911        | 24.121        | 1'56.397        | 231.0        | 14:10'59.901 |
| 5                             | 8.871        | 16.368        | 35.871        | 30.889        | <b>23.827</b> | <b>1'55.826</b> | <b>234.5</b> | 14:12'56.298 |
| 6                             | 8.943        | <b>16.268</b> | <b>35.718</b> | 30.976        | 24.059        | 1'55.964        | 233.0        | 14:14'52.124 |
|                               |              |               |               |               |               |                 |              | 14:16'48.088 |

| 23° 9 C. LONDON (1'58.569) |              |        |        |               |               |            |              |              |
|----------------------------|--------------|--------|--------|---------------|---------------|------------|--------------|--------------|
| Lap                        | Seg. 1       | Seg. 2 | Seg. 3 | Seg. 4        | Seg. 5        | Lap Time   | km/h         | Local Time   |
| 1                          |              | 19.352 | 38.390 | 32.930        | 24.966        |            | 186.6        | 14:02'05.467 |
| 2                          | <b>8.918</b> | 16.900 | 37.286 | 31.976        | <b>24.452</b> | 1'59.532   | <b>233.0</b> | 14:04'04.999 |
| 3                          | 8.941        | 16.791 | 36.882 | <b>31.452</b> | 24.654        | 1'58.720   | <b>233.0</b> | 14:06'03.719 |
| 4                          | 9.044        | 17.071 | 38.489 | 32.674        | 4'45.196      | 6'22.474 P | 229.5        | 14:12'26.193 |
| 5                          | 13.151       | 18.435 | 37.872 | 32.177        | 24.646        | 2'06.281 P | 186.6        | 14:14'32.474 |

13/05/2017

P = Pits In/Out - C = Lap-Time Cancelled

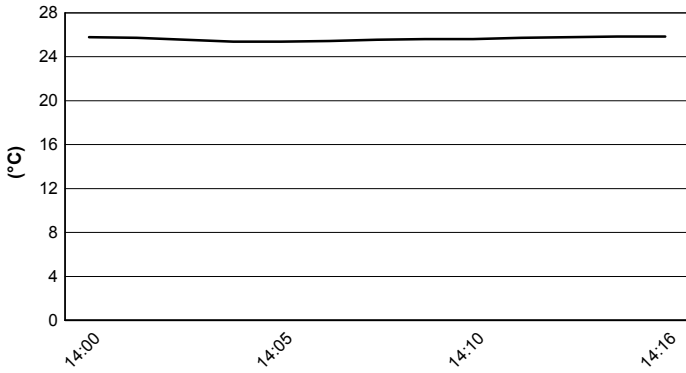
These data/results cannot be reproduced, stored and/or transmitted in whole or in part by any manner of electronic, mechanical, photocopying, recording, broadcasting or otherwise now known or herein after developed without the previous express consent by the copyright owner, except for reproduction in daily press and regular printed publications on sale to the public within 60 days of the event related to those data/results and always provided that copyright symbol appears together as follows below.

© DORNA WSBK ORGANIZATION Srl 2017

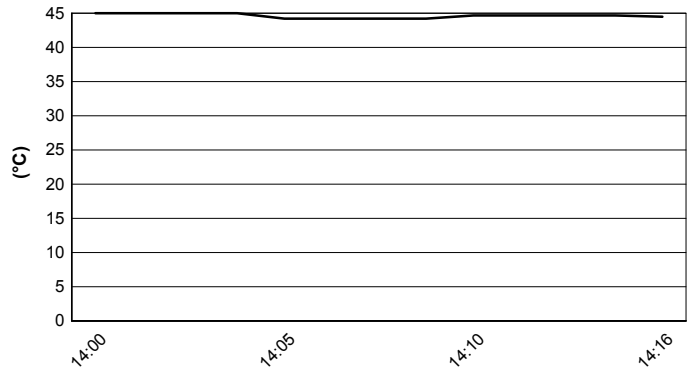
**Italian Round, 12-13-14 May 2017**  
**World Supersport - Weather Report Superpole 1**

Session started 14:00 Session ended 14:16

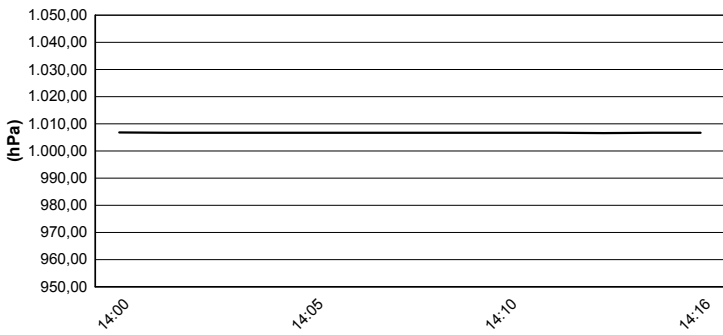
**Air Temperature**



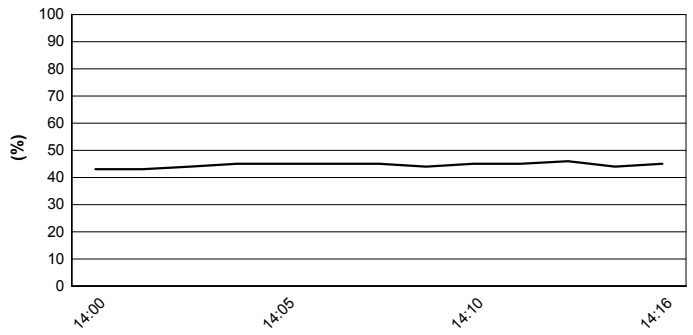
**Track Temperature**



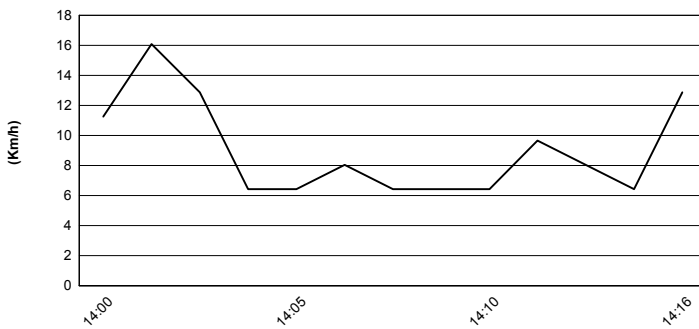
**Air Pressure**



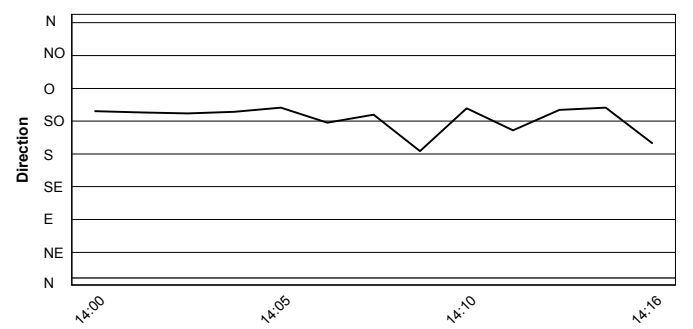
**Humidity**



**Wind Speed**



**Wind Direction**



13/05/2017

These data/results cannot be reproduced, stored and/or transmitted in whole or in part by any manner of electronic, mechanical, photocopying, recording, broadcasting or otherwise now known or herein after developed without the previous express consent by the copyright owner, except for reproduction in daily press and regular printed publications on sale to the public within 60 days of the event related to those data/results and always provided that copyright symbol appears together as follows below.

© DORNA WSBK ORGANIZATION Srl 2017