

Italian Round, 12-13-14 May 2017

World Supersport 300 - Free Practices Combined Results

Imola Circuit 4.936 m

No.	Rider	Nat	Team	Bike	FP1	FP2	Time	Gap	Rel.	Avg	Laps
1	15 A. COPPOLA	ITA	SK Racing	Yamaha YZF-R3	2'12.517	2'10.735	2'10.735			135,921	23
2	88 M. PEREZ	ESP	WILSport Racedays	Honda CBR500R	2'12.010	2'11.152	2'11.152	0.417	0.417	135,489	20
3	25 B. SÁNCHEZ	ESP	Halcourier Racing	Yamaha YZF-R3	2'13.095	2'11.902	2'11.902	1.167	0.750	134,718	26
4	99 P. GRASSIA	ITA	3570 Made in CIV	Kawasaki Ninja 300	2'13.961	2'12.069	2'12.069	1.334	0.167	134,548	23
5	22 M. KALININ	UKR	Team MOTOXRACING	Yamaha YZF-R3	2'14.813	2'12.204	2'12.204	1.469	0.135	134,410	26
6	95 G. DE GRUTTOLA	ITA	SK Racing	Yamaha YZF-R3	2'14.045	2'12.249	2'12.249	1.514	0.045	134,365	23
7	41 M. GARCIA	ESP	Halcourier Racing	Yamaha YZF-R3	2'13.285	2'12.471	2'12.471	1.736	0.222	134,140	26
8	18 A. MURLEY	GBR	Team Toth	Yamaha YZF-R3	2'16.000	2'12.709	2'12.709	1.974	0.238	133,899	26
9	13 J. FACCO	ITA	Bierreti By 2R	Yamaha YZF-R3	2'14.282	2'12.833	2'12.833	2.098	0.124	133,774	26
10	20 D. LOUREIRO	RSA	DS Junior Team	Yamaha YZF-R3	2'13.158	2'12.881	2'12.881	2.146	0.048	133,726	25
11	23 M. BASTIANELLI	ITA	3570 Made in CIV	Kawasaki Ninja 300	2'15.350	2'13.098	2'13.098	2.363	0.217	133,508	16
12	6 R. SCHOTMAN	NED	GRT Yamaha WorldSSP300 Team	Yamaha YZF-R3	2'13.371	2'13.213	2'13.213	2.478	0.115	133,392	26
13	2 A. CARRASCO	ESP	ETG Racing	Kawasaki Ninja 300	2'13.743	2'13.368	2'13.368	2.633	0.155	133,237	26
14	91 L. BERNARDI	RSM	MotorZenit	Yamaha YZF-R3	2'14.356	2'13.450	2'13.450	2.715	0.082	133,155	24
15	121 K. PATOVA	FIN	Kallio Racing	Yamaha YZF-R3	2'16.438	2'13.564	2'13.564	2.829	0.114	133,042	25
16	14 E. DE LA VEGA	FRA	GRT Yamaha WorldSSP300 Team	Yamaha YZF-R3	2'15.090	2'13.574	2'13.574	2.839	0.010	133,032	26
17	28 P. GIACOMINI	ITA	Terra e Moto	Yamaha YZF-R3	2'14.319	2'13.614	2'13.614	2.879	0.040	132,992	21
18	12 A. RUSMIPUTRO	INA	Pertamina Almeria Racing Team	Yamaha YZF-R3	2'16.099	2'13.919	2'13.919	3.184	0.305	132,689	26
19	84 M. CARBONERA	ITA	SK Racing	Yamaha YZF-R3	2'17.312	2'14.013	2'14.013	3.278	0.094	132,596	25
20	33 D. VALLE	ESP	Halcourier Racing	Yamaha YZF-R3	2'14.842	2'14.114	2'14.114	3.379	0.101	132,496	26
21	87 A. LICCIARDI	BEL	Team Trasimeno	Yamaha YZF-R3	2'16.731	2'14.355	2'14.355	3.620	0.241	132,259	24
22	35 A. TRIGLIA	ITA	Scuderia Maranga Racing	Honda CBR500R	2'16.196	2'14.496	2'14.496	3.761	0.141	132,120	25
23	19 E. ROVELLI	ITA	ParkinGO DS Junior Team	Yamaha YZF-R3	2'17.504	2'14.601	2'14.601	3.866	0.105	132,017	24
24	52 T. BEZUIDENHOUT	RSA	Team Toth	Yamaha YZF-R3	2'16.579	2'14.618	2'14.618	3.883	0.017	132,000	23
25	80 A. PONTONE	ITA	IODARacing	Yamaha YZF-R3	2'14.779	2'14.727	2'14.727	3.992	0.109	131,893	24
26	27 F. ROVELLI	ITA	ParkinGO DS Junior Team	Yamaha YZF-R3	2'17.601	2'14.934	2'14.934	4.199	0.207	131,691	21
27	75 S. DEROUÉ	NED	MTM HS Kawasaki	Kawasaki Ninja 300	2'22.333	2'15.122	2'15.122	4.387	0.188	131,508	19
28	54 H. CABUK	TUR	Kawasaki Puccetti Racing	Kawasaki Ninja 300	2'15.647	2'15.647	2'15.647	4.912	0.525	130,999	12
29	17 G. NODERER	GER	Scuderia Maranga Racing	Honda CBR500R	2'15.747	2'16.315	2'15.747	5.012	0.100	130,902	26
30	21 A. BIDDLE	NZL	Sourz Foods - Benjan Racing	Kawasaki Ninja 300	2'17.868	2'15.796	2'15.796	5.061	0.049	130,855	23
31	79 C. TAYLOR	GBR	MTM HS Kawasaki	Kawasaki Ninja 300	2'16.313	2'16.277	2'16.277	5.542	0.481	130,393	25
32	130 R. FERREIRA	BRA	Kallio Racing	Yamaha YZF-R3	2'18.221	2'16.315	2'16.315	5.580	0.038	130,357	26
33	9 R. DOORAKKERS	NED	MVR Racing	Yamaha YZF-R3	2'17.930	2'18.086	2'17.930	7.195	1.615	128,831	23
34	94 C. MITCHELL	GBR	Hopkins Racing	Kawasaki Ninja 300	2'18.541	2'18.021	2'18.021	7.286	0.091	128,746	26
35	62 J. SCHULTZ	RSA	DDM by BWG_Bike & Motor RT_Grimaldi	Kawasaki Ninja 300	2'20.477	2'18.180	2'18.180	7.445	0.159	128,597	23
36	7 N. SETTIMO	ITA	Bierreti By 2R	Yamaha YZF-R3	2'19.297	2'18.305	2'18.305	7.570	0.125	128,481	23
37	11 N. CUPAIOLI	ITA	3ENNE#Racing	Yamaha YZF-R3	2'21.333	2'18.797	2'18.797	8.062	0.492	128,026	24

12/05/2017

These data/results cannot be reproduced, stored and/or transmitted in whole or in part by any manner of electronic, mechanical, photocopying, recording, broadcasting or otherwise now known or herein after developed without the previous express consent by the copyright owner, except for reproduction in daily press and regular printed publications on sale to the public within 60 days of the event related to those data/results and always provided that copyright symbol appears together as follows below.

© DORNA WSBK ORGANIZATION Srl 2017

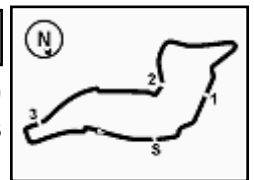
FIAT PERUGIA TIMING



Official Tyre Supplier



Official Timekeeper



Imola Circuit 4.936 m

1 / 2

Italian Round, 12-13-14 May 2017

World Supersport 300 - Results Free Practice 2nd Session

No.	Rider	Nat	Team	Bike	Time	Gap	Rel.	Laps	Speed	
									Avg	Max
1	15 A. COPPOLA	ITA	SK Racing	Yamaha YZF-R3	2'10.735			12	135,921	178,9
2	88 M. PEREZ	ESP	WILSport Racedays	Honda CBR500R	2'11.152	0.417	0.417	10	135,489	180,7
3	25 B. SANCHEZ	ESP	Halcourier Racing	Yamaha YZF-R3	2'11.902	1.167	0.750	13	134,718	178,0
4	99 P. GRASSIA	ITA	3570 Made in CIV	Kawasaki Ninja 300	2'12.069	1.334	0.167	11	134,548	176,2
5	22 M. KALININ	UKR	Team MOTOXRACING	Yamaha YZF-R3	2'12.204	1.469	0.135	13	134,410	181,6
6	95 G. DE GRUTTOLA	ITA	SK Racing	Yamaha YZF-R3	2'12.249	1.514	0.045	12	134,365	179,8
7	41 M. GARCIA	ESP	Halcourier Racing	Yamaha YZF-R3	2'12.471	1.736	0.222	13	134,140	180,1
8	18 A. MURLEY	GBR	Team Toth	Yamaha YZF-R3	2'12.709	1.974	0.238	14	133,899	177,7
9	13 J. FACCO	ITA	Bierreti By 2R	Yamaha YZF-R3	2'12.833	2.098	0.124	13	133,774	180,1
10	20 D. LOUREIRO	RSA	DS Junior Team	Yamaha YZF-R3	2'12.881	2.146	0.048	13	133,726	178,0
11	23 M. BASTIANELLI	ITA	3570 Made in CIV	Kawasaki Ninja 300	2'13.098	2.363	0.217	11	133,508	179,5
12	6 R. SCHOTMAN	NED	GRT Yamaha WorldSSP300 Team	Yamaha YZF-R3	2'13.213	2.478	0.115	13	133,392	177,7
13	2 A. CARRASCO	ESP	ETG Racing	Kawasaki Ninja 300	2'13.368	2.633	0.155	13	133,237	183,1
14	91 L. BERNARDI	RSM	MotorZenit	Yamaha YZF-R3	2'13.450	2.715	0.082	12	133,155	179,8
15	121 K. PATOVA	FIN	Kallio Racing	Yamaha YZF-R3	2'13.564	2.829	0.114	14	133,042	178,6
16	14 E. DE LA VEGA	FRA	GRT Yamaha WorldSSP300 Team	Yamaha YZF-R3	2'13.574	2.839	0.010	13	133,032	176,5
17	28 P. GIACOMINI	ITA	Terra e Moto	Yamaha YZF-R3	2'13.614	2.879	0.040	13	132,992	174,0
18	12 A. RUSMIPUTRO	INA	Pertamina Almeria Racing Team	Yamaha YZF-R3	2'13.919	3.184	0.305	14	132,689	176,8
19	84 M. CARBONERA	ITA	SK Racing	Yamaha YZF-R3	2'14.013	3.278	0.094	12	132,596	178,0
20	33 D. VALLE	ESP	Halcourier Racing	Yamaha YZF-R3	2'14.114	3.379	0.101	13	132,496	180,1
21	87 A. LICCIARDI	BEL	Team Trasimeno	Yamaha YZF-R3	2'14.355	3.620	0.241	13	132,259	176,8
22	35 A. TRIGLIA	ITA	Scuderia Maranga Racing	Honda CBR500R	2'14.496	3.761	0.141	12	132,120	175,7
23	19 E. ROVELLI	ITA	ParkinGO DS Junior Team	Yamaha YZF-R3	2'14.601	3.866	0.105	13	132,017	182,5
24	52 T. BEZUIDENHOUT	RSA	Team Toth	Yamaha YZF-R3	2'14.618	3.883	0.017	12	132,000	172,6
25	80 A. PONTONE	ITA	IODARacing	Yamaha YZF-R3	2'14.727	3.992	0.109	12	131,893	179,5
26	27 F. ROVELLI	ITA	ParkinGO DS Junior Team	Yamaha YZF-R3	2'14.934	4.199	0.207	11	131,691	176,5
27	75 S. DEROUÉ	NED	MTM HS Kawasaki	Kawasaki Ninja 300	2'15.122	4.387	0.188	13	131,508	181,6
28	21 A. BIDDLE	NZL	Sourz Foods - Benjan Racing	Kawasaki Ninja 300	2'15.796	5.061	0.674	12	130,855	177,7
29	79 C. TAYLOR	GBR	MTM HS Kawasaki	Kawasaki Ninja 300	2'16.277	5.542	0.481	13	130,393	176,5
30	17 G. NODERER	GER	Scuderia Maranga Racing	Honda CBR500R	2'16.315	5.580	0.038	13	130,357	175,4
31	130 R. FERREIRA	BRA	Kallio Racing	Yamaha YZF-R3	2'16.315	5.580	0.000	13	130,357	176,2
32	94 C. MITCHELL	GBR	Hopkins Racing	Kawasaki Ninja 300	2'18.021	7.286	1.706	13	128,746	180,1
33	9 R. DOORAKKERS	NED	MVR Racing	Yamaha YZF-R3	2'18.086	7.351	0.065	11	128,685	171,2
34	62 J. SCHULTZ	RSA	DDM by BWG_Bike & Motor RT_Grimaldi	Kawasaki Ninja 300	2'18.180	7.445	0.094	13	128,597	174,2
35	7 N. SETTIMO	ITA	Bierreti By 2R	Yamaha YZF-R3	2'18.305	7.570	0.125	13	128,481	177,1
36	11 N. CUPAIOLI	ITA	3ENNE#Racing	Yamaha YZF-R3	2'18.797	8.062	0.492	12	128,026	174,5
37	54 H. CABUK	TUR	Kawasaki Puccetti Racing	Kawasaki Ninja 300				0		175,4

Qualifying Lap Time (107% of 2'10.735): 2'19.887

AIR	Humidity:	64%	Temp:	22°C
TRACK	Condition:	Dry	Temp:	30°C

12/05/2017 Start 17:25 End 18:07 The results are provisional until the end of the time limit for protests and appeals and the completion of the technical checks.

These data/results cannot be reproduced, stored and/or transmitted in whole or in part by any manner of electronic, mechanical, photocopying, recording, broadcasting or otherwise now known or herein after developed without the previous express consent by the copyright owner, except for reproduction in daily press and regular printed publications on sale to the public within 60 days of the event related to those data/results and always provided that copyright symbol appears together as follows below.

© DORNA WSBK ORGANIZATION Srl 2017

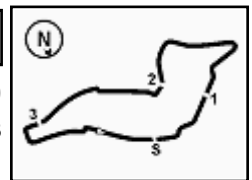
FICR PERUGIA TIMING



Official Tyre Supplier



Official Timekeeper



Italian Round, 12-13-14 May 2017

World Supersport 300 - Results Free Practice 2nd Session

Session Highlights

Local Time	No. Rider	Description
17.25.00		Start
17.27.27	62 J. SCHULTZ	Lap Cancelled - Exit Track Limits - Turn 21
17.29.19	62 J. SCHULTZ	Lap Cancelled - Exit Track Limits - Turn 15
17.29.46	35 A. TRIGLIA	Lap Cancelled - Exit Track Limits - Turn 21
17.30.08		RED FLAG
17.30.53	54 H. CABUK	Crashed - Turn 22
17.39.03	54 H. CABUK	Medical Centre
17.40.42	7 N. SETTIMO	Lap Cancelled - Exit Track Limits - Turn 15
17.40.56	19 E. ROVELLI	Lap Cancelled - Exit Track Limits - Turn 13
17.42.16	9 R. DOORAKKERS	Lap Cancelled - Exit Track Limits - Turn 21
17.42.26	14 E. DE LA VEGA	Lap Cancelled - Exit Track Limits - Turn 21
17.43.24	25 B. SÁNCHEZ	Lap Cancelled - Exit Track Limits - Turn 13
17.44.04	9 R. DOORAKKERS	Lap Cancelled - Exit Track Limits - Turn 13
17.45.48	19 E. ROVELLI	Lap Cancelled - Exit Track Limits - Turn 13
17.46.15	9 R. DOORAKKERS	Lap Cancelled - Exit Track Limits - Turn 15
17.48.05	19 E. ROVELLI	Lap Cancelled - Exit Track Limits - Turn 13
17.48.08	7 N. SETTIMO	Lap Cancelled - Exit Track Limits - Turn 13
17.50.20	11 N. CUPAIOLI	Lap Cancelled - Exit Track Limits - Turn 15
17.51.11	13 J. FACCO	Lap Cancelled - Exit Track Limits - Turn 13
17.51.41	9 R. DOORAKKERS	Lap Cancelled - Exit Track Limits - Turn 21
17.53.04	19 E. ROVELLI	Lap Cancelled - Exit Track Limits - Turn 21
17.53.10	7 N. SETTIMO	Lap Cancelled - Exit Track Limits - Turn 21
17.53.27	9 R. DOORAKKERS	Lap Cancelled - Exit Track Limits - Turn 13
17.53.29	12 A. RUSMIPUTRO	Lap Cancelled - Exit Track Limits - Turn 21
17.55.43	9 R. DOORAKKERS	Lap Cancelled - Exit Track Limits - Turn 13
17.55.49	25 B. SÁNCHEZ	Lap Cancelled - Exit Track Limits - Turn 21
17.56.46	95 G. DE GRUTTOLA	Lap Cancelled (2'13.749) - Exit Track Limits - Turn 22
18.02.58	35 A. TRIGLIA	Lap Cancelled - Exit Track Limits - Turn 21
18.03.03	79 C. TAYLOR	Lap Cancelled - Exit Track Limits - Turn 21
18.03.34	9 R. DOORAKKERS	Crashed - Turn 18
18.04.00	52 T. BEZUIDENHOUT	Lap Cancelled - Exit Track Limits - Turn 21
18.04.01	18 A. MURLEY	Lap Cancelled - Exit Track Limits - Turn 21
18.07.20		End Of Session

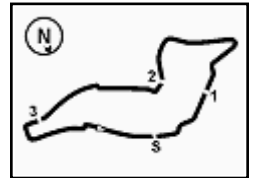
Fastest Laps Sequence

No.	Rider	Nat	Team	Bike	Local Time	Time	Gap	Avg
17	G. NODERER	GER	Scuderia Maranga Racing	Honda CBR500R	17:29'40.265	2'18.318		128,469
25	B. SÁNCHEZ	ESP	Halcourier Racing	Yamaha YZF-R3	17:29'47.586	2'16.115	-2.203	130,548
22	M. KALININ	UKR	Team MOTOXRACING	Yamaha YZF-R3	17:29'48.692	2'15.934	-0.181	130,722
2	A. CARRASCO	ESP	ETG Racing	Kawasaki Ninja 300	17:43'42.845	2'14.788	-1.146	131,834
2	A. CARRASCO	ESP	ETG Racing	Kawasaki Ninja 300	17:45'57.316	2'14.471	-0.317	132,144
25	B. SÁNCHEZ	ESP	Halcourier Racing	Yamaha YZF-R3	17:46'10.334	2'14.337	-0.134	132,276
99	P. GRASSIA	ITA	3570 Made in CIV	Kawasaki Ninja 300	17:46'14.480	2'13.454	-0.883	133,151
88	M. PEREZ	ESP	WILSport Racedays	Honda CBR500R	17:46'20.828	2'12.123	-1.331	134,493
88	M. PEREZ	ESP	WILSport Racedays	Honda CBR500R	17:50'51.351	2'11.780	-0.343	134,843
88	M. PEREZ	ESP	WILSport Racedays	Honda CBR500R	17:57'42.552	2'11.152	-0.628	135,489
15	A. COPPOLA	ITA	SK Racing	Yamaha YZF-R3	18:02'44.537	2'10.735	-0.417	135,921

12/05/2017 Start End The results are provisional until the end of the time limit for protests and appeals and the completion of the technical checks.
 17:25 18:07

These data/results cannot be reproduced, stored and/or transmitted in whole or in part by any manner of electronic, mechanical, photocopying, recording, broadcasting or otherwise now known or herein after developed without the previous express consent by the copyright owner, except for reproduction in daily press and regular printed publications on sale to the public within 60 days of the event related to those data/results and always provided that copyright symbol appears together as follows below.

© DORNA WSBK ORGANIZATION Srl 2017



Imola Circuit 4.936 m

1 / 2

Italian Round, 12-13-14 May 2017

World Supersport 300 - Ideal Times Free Practice 2nd Session

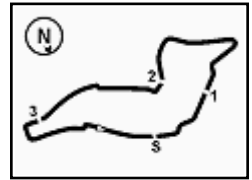
No.	Rider	Nat	Bike	Seg. 1	Seg. 2	Seg. 3	Seg. 4	Seg. 5	Ideal Time		
				Diff. 1	Diff. 2	Diff. 3	Diff. 4	Diff. 5	Best Lap	Pos.	Diff.
1	88 M. PEREZ	ESP	Honda CBR500R	11.375 0.160	17.915 0.150	39.972 0.268	35.389	25.923	2'10.574 2'11.152	3	0.578
2	15 A. COPPOLA	ITA	Yamaha YZF-R3	11.323	17.838	40.007	35.552	26.015	2'10.735 2'10.735	2	
3	25 B. SÁNCHEZ	ESP	Yamaha YZF-R3	11.387 0.087	18.129	40.358 0.064	35.738 0.105	26.034	2'11.646 2'11.902	4	0.256
4	22 M. KALININ	UKR	Yamaha YZF-R3	11.318 0.143	18.346 0.275	40.426	35.652	26.044	2'11.786 2'12.204	6	0.418
5	95 G. DE GRUTTOLA	ITA	Yamaha YZF-R3	11.493 0.237	18.042 0.165	40.631	35.542	26.139	2'11.847 2'12.249	7	0.402
6	99 P. GRASSIA	ITA	Kawasaki Ninja 300	11.622	18.158	40.379	35.783	26.099 0.028	2'12.041 2'12.069	5	0.028
7	23 M. BASTIANELLI	ITA	Kawasaki Ninja 300	11.353 0.387	18.322	40.337	35.968	26.261 0.470	2'12.241 2'13.098	12	0.857
8	41 M. GARCIA	ESP	Yamaha YZF-R3	11.368 0.108	18.093	40.534 0.072	35.925	26.371	2'12.291 2'12.471	8	0.180
9	20 D. LOUREIRO	RSA	Yamaha YZF-R3	11.534 0.161	18.024 0.100	40.563 0.028	36.099	26.372	2'12.592 2'12.881	11	0.289
10	2 A. CARRASCO	ESP	Kawasaki Ninja 300	11.303	17.921 0.048	40.780 0.079	36.007 0.494	26.588 0.148	2'12.599 2'13.368	14	0.769
11	18 A. MURLEY	GBR	Yamaha YZF-R3	11.646	18.165	40.500	35.941	26.347 0.110	2'12.599 2'12.709	9	0.110
12	13 J. FACCO	ITA	Yamaha YZF-R3	11.461	18.128	40.762 0.011	36.062 0.034	26.227 0.148	2'12.640 2'12.833	10	0.193
13	6 R. SCHOTMAN	NED	Yamaha YZF-R3	11.520 0.130	18.010 0.320	40.762 0.078	36.150	26.243	2'12.685 2'13.213	13	0.528
14	91 L. BERNARDI	RSM	Yamaha YZF-R3	11.565 0.281	18.285 0.092	40.711	35.894	26.293 0.329	2'12.748 2'13.450	15	0.702
15	28 P. GIACOMINI	ITA	Yamaha YZF-R3	11.547	18.250	40.929 0.178	36.093 0.112	26.347 0.158	2'13.166 2'13.614	18	0.448
16	14 E. DE LA VEGA	FRA	Yamaha YZF-R3	11.526 0.255	18.176	40.786	36.176	26.644 0.011	2'13.308 2'13.574	17	0.266
17	121 K. PATOVA	FIN	Yamaha YZF-R3	11.564 0.101	18.381 0.057	40.845	36.181 0.049	26.386	2'13.357 2'13.564	16	0.207
18	33 D. VALLE	ESP	Yamaha YZF-R3	11.399 0.044	18.304 0.024	41.261 0.171	36.139	26.509 0.263	2'13.612 2'14.114	21	0.502
19	80 A. PONTONE	ITA	Yamaha YZF-R3	11.638 0.067	18.355 0.042	41.060 0.224	36.429 0.219	26.282 0.411	2'13.764 2'14.727	26	0.963
20	12 A. RUSMIPUTRO	INA	Yamaha YZF-R3	11.588 0.029	18.203 0.102	41.115	36.377	26.505	2'13.788 2'13.919	19	0.131
21	84 M. CARBONERA	ITA	Yamaha YZF-R3	11.541	18.375 0.002	41.097 0.109	36.286	26.603	2'13.902 2'14.013	20	0.111
22	52 T. BEZUIDENHOUT	RSA	Yamaha YZF-R3	11.684	18.546 0.108	40.879	36.607 0.172	26.546 0.076	2'14.262 2'14.618	25	0.356
23	87 A. LICCIARDI	BEL	Yamaha YZF-R3	11.614	18.447	41.215	36.227	26.852	2'14.355 2'14.355	22	
24	35 A. TRIGLIA	ITA	Honda CBR500R	11.662 0.083	18.417	41.346	36.519	26.453 0.016	2'14.397 2'14.496	23	0.099
25	19 E. ROVELLI	ITA	Yamaha YZF-R3	11.336 0.091	18.390	41.655 0.091	36.469	26.569	2'14.419 2'14.601	24	0.182
26	27 F. ROVELLI	ITA	Yamaha YZF-R3	11.498 0.037	18.511	41.427	36.406 0.263	26.776 0.016	2'14.618 2'14.934	27	0.316
27	75 S. DEROUÉ	NED	Kawasaki Ninja 300	11.438 0.164	18.284	41.293 0.200	36.543	27.200	2'14.758 2'15.122	28	0.364
28	79 C. TAYLOR	GBR	Kawasaki Ninja 300	11.654 0.163	18.477	41.111 0.484	36.475 0.759	27.142 0.012	2'14.859 2'16.277	30	1.418
29	17 G. NODERER	GER	Honda CBR500R	11.839	18.319	41.383 0.741	36.871 0.171	26.838 0.153	2'15.250 2'16.315	32	1.065
30	21 A. BIDDLE	NZL	Kawasaki Ninja 300	11.447 0.199	18.567 0.008	41.698	36.893	26.984	2'15.589 2'15.796	29	0.207
31	130 R. FERREIRA	BRA	Yamaha YZF-R3	11.691	18.562	41.421	36.984 0.185	27.010 0.462	2'15.668 2'16.315	31	0.647
32	94 C. MITCHELL	GBR	Kawasaki Ninja 300	11.454 0.553	18.708 0.005	42.271	37.151 0.453	27.426	2'17.010 2'18.021	33	1.011
33	9 R. DOORAKKERS	NED	Yamaha YZF-R3	12.069 0.131	18.732 0.037	42.025 0.179	37.408 0.219	27.286	2'17.520 2'18.086	34	0.566

12/05/2017

These data/results cannot be reproduced, stored and/or transmitted in whole or in part by any manner of electronic, mechanical, photocopying, recording, broadcasting or otherwise now known or herein after developed without the previous express consent by the copyright owner, except for reproduction in daily press and regular printed publications on sale to the public within 60 days of the event related to those data/results and always provided that copyright symbol appears together as follows below.

© DORNA WSBK ORGANIZATION Srl 2017





Imola Circuit 4.936 m
2 / 2

Italian Round, 12-13-14 May 2017

World Supersport 300 - Ideal Times Free Practice 2nd Session

No.	Rider	Nat	Bike	Seg. 1	Seg. 2	Seg. 3	Seg. 4	Seg. 5	Ideal Time			
				Diff. 1	Diff. 2	Diff. 3	Diff. 4	Diff. 5	Best Lap	Pos.	Diff.	
34	7 N. SETTIMO	ITA	Yamaha YZF-R3	11.461 0.367	18.916	42.142 0.330	37.518 0.078	27.493	2'17.530	2'18.305	36	0.775
35	62 J. SCHULTZ	RSA	Kawasaki Ninja 300	11.804 0.013	18.771	42.572 0.005	37.276 0.145	27.587 0.007	2'18.010	2'18.180	35	0.170
Overall Ideal Time				11.303	17.838	39.972	35.389	25.923	2'10.425			

12/05/2017

These data/results cannot be reproduced, stored and/or transmitted in whole or in part by any manner of electronic, mechanical, photocopying, recording, broadcasting or otherwise now known or herein after developed without the previous express consent by the copyright owner, except for reproduction in daily press and regular printed publications on sale to the public within 60 days of the event related to those data/results and always provided that copyright symbol appears together as follows below.

© DORNA WSBK ORGANIZATION Srl 2017

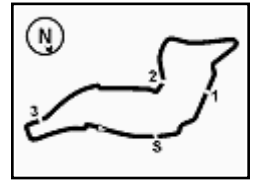
FICR PERUGIA TIMING



Official Tyre Supplier



Official Timekeeper



Italian Round, 12-13-14 May 2017

World Supersport 300 - Best Sector & Speed Free Practice 2nd Session

Lap	Seg. 1	Seg. 2	Seg. 3	Seg. 4	Seg. 5	Lap Time	km/h	Local Time
8	11.790	18.873	41.841	36.892	27.142	2'16.538	173.1	17:52'49.690
9	11.817	18.477	41.595	37.234	27.154	2'16.277	173.1	17:55'05.967
10	11.850	18.680	44.405	42.392	1'24.818	3'22.145 P	172.0	17:58'28.112
11	14.593	19.201	42.011	36.751	27.195	2'19.751 P	145.4	18:00'47.863
12	11.825	18.487	41.448	36.573	26.137	2'14.470 C	173.1	18:03'02.333
13	13.051	18.552	41.111	36.475	27.381	2'16.570	168.5	18:05'18.903

30° 17 G. NODERER (2'16.315)								
Lap	Seg. 1	Seg. 2	Seg. 3	Seg. 4	Seg. 5	Lap Time	km/h	Local Time
1	12.225	19.280	42.460	37.436	26.917	2'18.318	166.2	17:29'40.265
2	12.149	18.868	46.517	39.826	7'32.420	9'29.780 P	167.5	17:39'10.045
3	17.620	21.292	42.769	38.406	28.402	2'28.489 P	117.4	17:41'38.534
4	12.356	19.109	43.079	37.641	27.335	2'19.520	165.7	17:43'58.054
5	11.959	18.568	42.035	37.701	26.962	2'17.225	173.4	17:46'15.279
6	11.962	18.579	41.865	37.287	27.185	2'16.878	173.1	17:48'32.157
7	12.061	18.503	41.506	36.871	27.445	2'16.386	172.0	17:50'48.543
8	11.903	18.587	41.383	37.477	27.338	2'16.688	173.4	17:53'05.231
9	11.839	18.319	42.124	37.042	26.991	2'16.315	175.4	17:55'21.546
10	12.007	18.635	41.825	37.079	26.838	2'16.384	170.9	17:57'37.930
11	12.093	18.706	42.170	40.438	26.991	2'20.398	169.3	17:59'58.328
12	11.991	18.496	42.015	37.357	27.194	2'17.053	171.5	18:02'15.381
13	11.937	18.614	41.963	36.953	27.182	2'16.649	172.3	18:04'32.030

31° 130 R. FERREIRA (2'16.315)								
Lap	Seg. 1	Seg. 2	Seg. 3	Seg. 4	Seg. 5	Lap Time	km/h	Local Time
1	11.911	19.127	43.586	38.138	28.048	2'20.810	170.1	17:29'46.023
2	11.828	19.029	44.625	38.445	7'04.438	8'58.365 P	170.9	17:38'44.388
3	29.132	21.017	42.948	37.775	27.682	2'38.554 P	141.0	17:41'22.942
4	11.697	19.101	43.049	37.706	27.575	2'19.128	176.2	17:43'42.070
5	11.899	18.961	42.420	37.253	27.214	2'17.747	170.9	17:45'59.817
6	11.856	18.792	41.827	37.541	27.045	2'17.061	171.2	17:48'16.878
7	11.965	18.766	42.303	37.445	27.145	2'17.624	170.4	17:50'34.502
8	11.970	18.893	42.164	37.295	27.010	2'17.332	169.3	17:52'51.834
9	11.986	18.969	42.261	37.308	27.257	2'17.781	167.7	17:55'09.615
10	12.061	24.370	48.208	36.984	27.071	2'28.694	151.9	17:57'38.309
11	11.743	18.668	41.810	37.057	27.282	2'16.560	174.8	17:59'54.869
12	11.691	18.562	41.421	37.169	27.472	2'16.315	175.1	18:02'11.184
13	11.703	18.927	41.482	37.079	27.404	2'16.595	175.4	18:04'27.779

32° 94 C. MITCHELL (2'18.021)								
Lap	Seg. 1	Seg. 2	Seg. 3	Seg. 4	Seg. 5	Lap Time	km/h	Local Time
1	11.888	19.074	44.722	38.648	30.748	2'20.877	131.9	17:27'28.687
2	11.454	21.002	46.119	42.535	8'20.986	10'22.096 P	180.1	17:29'49.564
3	21.915	20.965	44.107	38.260	28.282	2'33.529 P	124.4	17:42'45.189
4	11.923	18.708	42.959	38.176	27.866	2'19.632	173.7	17:45'04.821
5	12.111	18.980	42.524	38.005	28.035	2'19.655	171.2	17:47'24.476
6	12.164	18.993	42.609	37.755	27.749	2'19.270	171.7	17:49'43.746
7	12.092	19.111	42.400	37.741	27.778	2'19.122	171.2	17:52'02.868
8	12.379	19.114	42.446	38.343	27.616	2'19.898	169.6	17:54'22.766
9	12.086	18.834	42.553	37.698	27.758	2'18.929	171.2	17:56'41.695
10	12.007	18.713	42.271	37.604	27.426	2'18.021	171.7	17:58'59.716
11	12.037	18.794	42.622	37.273	27.614	2'18.340	171.5	18:01'18.056
12	12.020	18.832	43.634	37.801	28.580	2'20.867	171.7	18:03'38.923
13	12.063	18.811	42.367	37.151	27.639	2'18.031	170.9	18:05'56.954

33° 9 R. DOORAKKERS (2'18.086)								
Lap	Seg. 1	Seg. 2	Seg. 3	Seg. 4	Seg. 5	Lap Time	km/h	Local Time
1	12.069	19.355	42.963	37.590	28.953	2'20.930	169.1	17:29'47.401
2	12.154	19.615	45.211	39.602	8'04.390	10'00.972 P	171.2	17:39'48.373
3	17.278	20.235	43.526	40.123	26.614	2'27.776 C	140.1	17:42'16.149
4	14.861	19.322	43.154	38.197	27.744	2'23.278 C	159.1	17:44'39.427
5	12.126	18.955	42.458	42.540	27.791	2'23.870 C	168.5	17:47'03.297
6	12.275	19.128	42.669	38.205	27.695	2'19.972	166.4	17:49'23.269
7	12.212	18.916	42.025	38.116	25.752	2'17.021 C	166.4	17:51'40.290
8	14.381	19.093	42.155	37.155	27.116	2'19.900 C	161.2	17:54'00.190
9	12.144	18.732	42.419	38.256	27.735	2'19.286 C	167.5	17:56'19.476
10	12.102	18.842	42.913	37.886	27.409	2'19.152	167.5	17:58'38.628
11	12.200	18.769	42.204	37.627	27.286	2'18.086	167.2	18:00'56.714

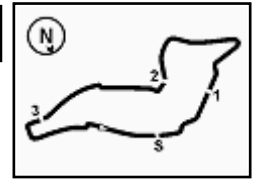
34° 62 J. SCHULTZ (2'18.180)								
Lap	Seg. 1	Seg. 2	Seg. 3	Seg. 4	Seg. 5	Lap Time	km/h	Local Time
1	26.221	20.999	44.741	38.919	29.751	142.9	17:27'26.823	
2	13.292	19.682	43.129	43.720	29.087	2'41.839 C	159.3	17:30'08.662
3	58.777	21.315	47.212	45.264	5'58.459	8'05.542 P	140.6	17:38'14.204
4		20.362	43.459	38.382	28.453	3'09.433 P	143.6	17:41'23.637

12/05/2017

P = Pits In/Out - C = Lap-Time Cancelled

These data/results cannot be reproduced, stored and/or transmitted in whole or in part by any manner of electronic, mechanical, photocopying, recording, broadcasting or otherwise now known or herein after developed without the previous express consent by the copyright owner, except for reproduction in daily press and regular printed publications on sale to the public within 60 days of the event related to those data/results and always provided that copyright symbol appears together as follows below.

© DORNA WSBK ORGANIZATION Srl 2017



Imola Circuit 4.936 m

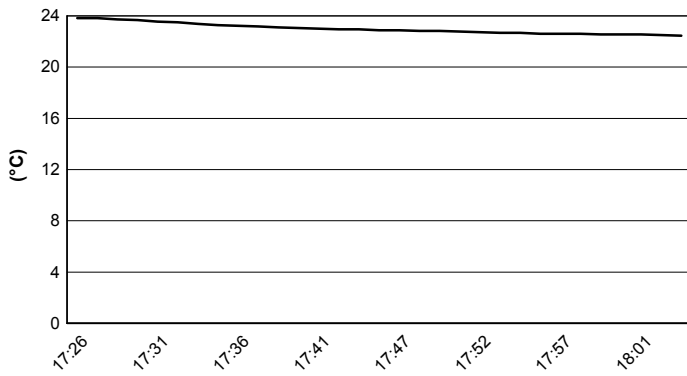
Italian Round, 12-13-14 May 2017

World Supersport 300 - Weather Report Free Practice 2nd Session

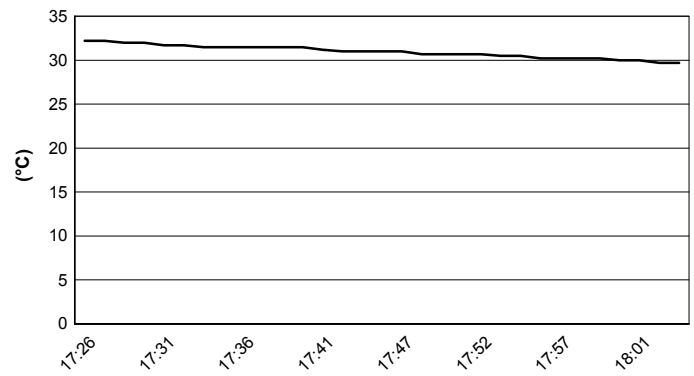
Session started 17:25

Session ended 18:07

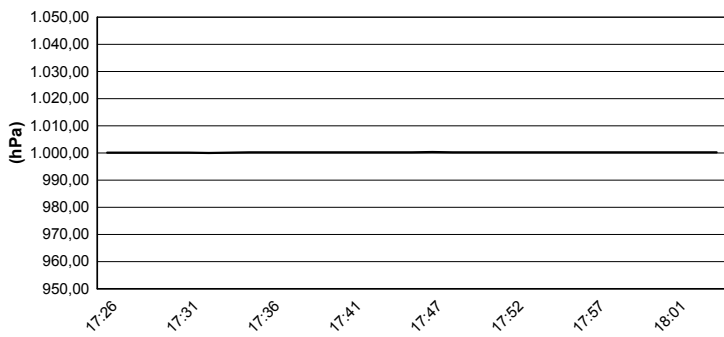
Air Temperature



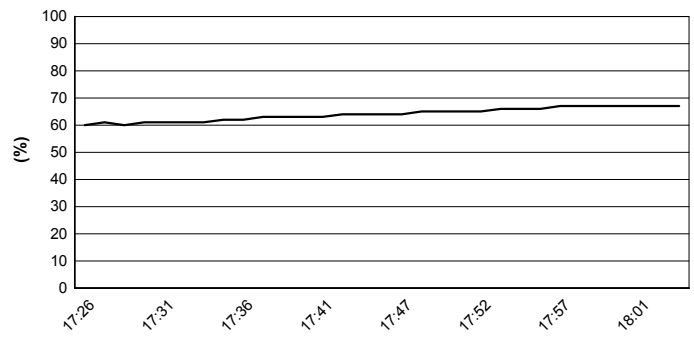
Track Temperature



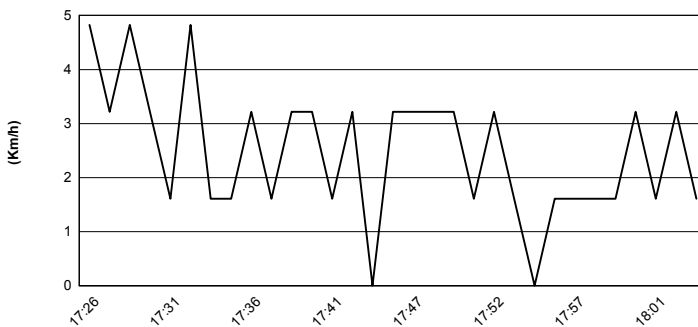
Air Pressure



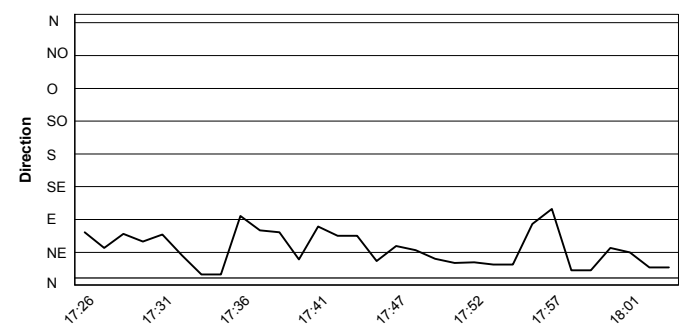
Humidity



Wind Speed



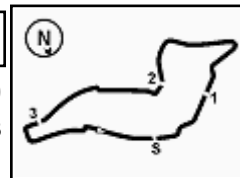
Wind Direction



12/05/2017

These data/results cannot be reproduced, stored and/or transmitted in whole or in part by any manner of electronic, mechanical, photocopying, recording, broadcasting or otherwise now known or herein after developed without the previous express consent by the copyright owner, except for reproduction in daily press and regular printed publications on sale to the public within 60 days of the event related to those data/results and always provided that copyright symbol appears together as follows below.

© DORNA WSBK ORGANIZATION Srl 2017



Imola Circuit 4.936 m

Italian Round, 12-13-14 May 2017
World Supersport 300 - Superpoles Entry List
Superpole 1

FPs Pos	No. Rider	Nat	Team	Bike	Time
11	23 M. BASTIANELLI	ITA	3570 Made in CIV	Kawasaki Ninja 300	2'13.098
12	6 R. SCHOTMAN	NED	GRT Yamaha WorldSSP300 Team	Yamaha YZF-R3	2'13.213
13	2 A. CARRASCO	ESP	ETG Racing	Kawasaki Ninja 300	2'13.368
14	91 L. BERNARDI	RSM	MotorZenit	Yamaha YZF-R3	2'13.450
15	121 K. PATOVA	FIN	Kallio Racing	Yamaha YZF-R3	2'13.564
16	14 E. DE LA VEGA	FRA	GRT Yamaha WorldSSP300 Team	Yamaha YZF-R3	2'13.574
17	28 P. GIACOMINI	ITA	Terra e Moto	Yamaha YZF-R3	2'13.614
18	12 A. RUSMIPUTRO	INA	Pertamina Almeria Racing Team	Yamaha YZF-R3	2'13.919
19	84 M. CARBONERA	ITA	SK Racing	Yamaha YZF-R3	2'14.013
20	33 D. VALLE	ESP	Halcourier Racing	Yamaha YZF-R3	2'14.114
21	87 A. LICCIARDI	BEL	Team Trasimeno	Yamaha YZF-R3	2'14.355
22	35 A. TRIGLIA	ITA	Scuderia Maranga Racing	Honda CBR500R	2'14.496
23	19 E. ROVELLI	ITA	ParkinGO DS Junior Team	Yamaha YZF-R3	2'14.601
24	52 T. BEZUIDENHOUT	RSA	Team Toth	Yamaha YZF-R3	2'14.618
25	80 A. PONTONE	ITA	IODARacing	Yamaha YZF-R3	2'14.727
26	27 F. ROVELLI	ITA	ParkinGO DS Junior Team	Yamaha YZF-R3	2'14.934
27	75 S. DEROUE	NED	MTM HS Kawasaki	Kawasaki Ninja 300	2'15.122
28	54 H. CABUK	TUR	Kawasaki Puccetti Racing	Kawasaki Ninja 300	2'15.647
29	17 G. NODERER	GER	Scuderia Maranga Racing	Honda CBR500R	2'15.747
30	21 A. BIDDLE	NZL	Sourz Foods - Benjan Racing	Kawasaki Ninja 300	2'15.796
31	79 C. TAYLOR	GBR	MTM HS Kawasaki	Kawasaki Ninja 300	2'16.277
32	130 R. FERREIRA	BRA	Kallio Racing	Yamaha YZF-R3	2'16.315
33	9 R. DOORAKKERS	NED	MVR Racing	Yamaha YZF-R3	2'17.930
34	94 C. MITCHELL	GBR	Hopkins Racing	Kawasaki Ninja 300	2'18.021
35	62 J. SCHULTZ	RSA	DDM by BWG_Bike & Motor RT_Grimaldi	Kawasaki Ninja 300	2'18.180
36	7 N. SETTIMO	ITA	Bierreti By 2R	Yamaha YZF-R3	2'18.305
37	11 N. CUPAIOLI	ITA	3ENNE#Racing	Yamaha YZF-R3	2'18.797

Superpole 2

FPs Pos	No. Rider	Nat	Team	Bike	Time
1	15 A. COPPOLA	ITA	SK Racing	Yamaha YZF-R3	2'10.735
2	88 M. PEREZ	ESP	WILSport Racedays	Honda CBR500R	2'11.152
3	25 B. SÁNCHEZ	ESP	Halcourier Racing	Yamaha YZF-R3	2'11.902
4	99 P. GRASSIA	ITA	3570 Made in CIV	Kawasaki Ninja 300	2'12.069
5	22 M. KALININ	UKR	Team MOTOXRACING	Yamaha YZF-R3	2'12.204
6	95 G. DE GRUTTOLA	ITA	SK Racing	Yamaha YZF-R3	2'12.249
7	41 M. GARCIA	ESP	Halcourier Racing	Yamaha YZF-R3	2'12.471
8	18 A. MURLEY	GBR	Team Toth	Yamaha YZF-R3	2'12.709
9	13 J. FACCO	ITA	Bierreti By 2R	Yamaha YZF-R3	2'12.833
10	20 D. LOUREIRO	RSA	DS Junior Team	Yamaha YZF-R3	2'12.881

 *
*

* These positions are assigned to the 1st and 2nd rider classified in Superpole 1

12/05/2017 1:

These data/results cannot be reproduced, stored and/or transmitted in whole or in part by any manner of electronic, mechanical, photocopying, recording, broadcasting or otherwise now known or herein after developed without the previous express consent by the copyright owner, except for reproduction in daily press and regular printed publications on sale to the public within 60 days of the event related to those data/results and always provided that copyright symbol appears together as follows below.

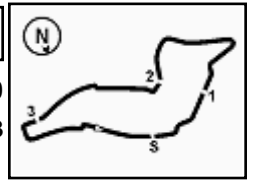
© DORNA WSBK ORGANIZATION Srl 2017

FIAT PERUGIA TIMING


Official Tyre Supplier



Official Timekeeper



Imola Circuit 4.936 m

Italian Round, 12-13-14 May 2017

World Supersport 300 - Best Laps & Speeds

1 / 2

No.	Rider		Best Lap	FP1		FP2					
	Nat	Bike		laps	speed	laps	speed				
1	15	A. COPPOLA	2'10.735	2'12.517	2'10.735	23	178,8	11	177,6	12	178,8
		ITA Yamaha YZF-R3									
2	88	M. PEREZ	2'11.152	2'12.010	2'11.152	20	180,6	10	175,3	10	180,6
		ESP Honda CBR500R									
3	25	B. SÁNCHEZ	2'11.902	2'13.095	2'11.902	26	177,9	13	175,6	13	177,9
		ESP Yamaha YZF-R3									
4	99	P. GRASSIA	2'12.069	2'13.961	2'12.069	23	179,1	12	179,1	11	176,2
		ITA Kawasaki Ninja 300									
5	22	M. KALININ	2'12.204	2'14.813	2'12.204	26	181,5	13	172,2	13	181,5
		UKR Yamaha YZF-R3									
6	95	G. DE GRUTTOLA	2'12.249	2'14.045	2'12.249	23	179,7	11	172,0	12	179,7
		ITA Yamaha YZF-R3									
7	41	M. GARCIA	2'12.471	2'13.285	2'12.471	26	180,0	13	176,8	13	180,0
		ESP Yamaha YZF-R3									
8	18	A. MURLEY	2'12.709	2'16.000	2'12.709	26	177,6	12	172,8	14	177,6
		GBR Yamaha YZF-R3									
9	13	J. FACCO	2'12.833	2'14.282	2'12.833	26	180,0	13	168,0	13	180,0
		ITA Yamaha YZF-R3									
10	20	D. LOUREIRO	2'12.881	2'13.158	2'12.881	25	177,9	12	172,2	13	177,9
		RSA Yamaha YZF-R3									
11	23	M. BASTIANELLI	2'13.098	2'15.350	2'13.098	16	179,4	5	166,9	11	179,4
		ITA Kawasaki Ninja 300									
12	6	R. SCHOTMAN	2'13.213	2'13.371	2'13.213	26	178,8	13	178,8	13	177,6
		NED Yamaha YZF-R3									
13	2	A. CARRASCO	2'13.368	2'13.743	2'13.368	26	183,1	13	176,5	13	183,1
		ESP Kawasaki Ninja 300									
14	91	L. BERNARDI	2'13.450	2'14.356	2'13.450	24	179,7	12	174,8	12	179,7
		RSM Yamaha YZF-R3									
15	121	K. PATOVA	2'13.564	2'16.438	2'13.564	25	178,5	11	167,7	14	178,5
		FIN Yamaha YZF-R3									
16	14	E. DE LA VEGA	2'13.574	2'15.090	2'13.574	26	176,5	13	171,2	13	176,5
		FRA Yamaha YZF-R3									
17	28	P. GIACOMINI	2'13.614	2'14.319	2'13.614	21	173,9	8	171,4	13	173,9
		ITA Yamaha YZF-R3									
18	12	A. RUSMIPUTRO	2'13.919	2'16.099	2'13.919	26	176,8	12	173,9	14	176,8
		INA Yamaha YZF-R3									
19	84	M. CARBONERA	2'14.013	2'17.312	2'14.013	25	177,9	13	173,1	12	177,9
		ITA Yamaha YZF-R3									
20	33	D. VALLE	2'14.114	2'14.842	2'14.114	26	180,0	13	176,2	13	180,0
		ESP Yamaha YZF-R3									

12/05/2017

These data/results cannot be reproduced, stored and/or transmitted in whole or in part by any manner of electronic, mechanical, photocopying, recording, broadcasting or otherwise now known or herein after developed without the previous express consent by the copyright owner, except for reproduction in daily press and regular printed publications on sale to the public within 60 days of the event related to those data/results and always provided that copyright symbol appears together as follows below.

© DORNA WSBK ORGANIZATION Srl 2017

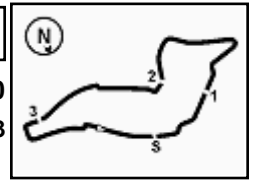
FICR PERUGIA TIMING



Official Tyre Supplier



Official Timekeeper



Imola Circuit 4.936 m

Italian Round, 12-13-14 May 2017

World Supersport 300 - Best Laps & Speeds

2 / 2

No.	Rider		Best Lap	FP1		FP2	
	Nat	Bike		laps	speed	laps	speed
21	87	A. LICCIARDI	2'14.355	2'16.731	2'14.355		
	BEL	Yamaha YZF-R3	24 176,8	11 169,3	13 176,8		
22	35	A. TRIGLIA	2'14.496	2'16.196	2'14.496		
	ITA	Honda CBR500R	25 175,6	13 174,2	12 175,6		
23	19	E. ROVELLI	2'14.601	2'17.504	2'14.601		
	ITA	Yamaha YZF-R3	24 182,5	11 178,2	13 182,5		
24	52	T. BEZUIDENHOUT	2'14.618	2'16.579	2'14.618		
	RSA	Yamaha YZF-R3	23 172,5	11 168,2	12 172,5		
25	80	A. PONTONE	2'14.727	2'14.779	2'14.727		
	ITA	Yamaha YZF-R3	24 179,4	12 171,2	12 179,4		
26	27	F. ROVELLI	2'14.934	2'17.601	2'14.934		
	ITA	Yamaha YZF-R3	21 176,5	10 169,3	11 176,5		
27	75	S. DEROUÉ	2'15.122	2'22.333	2'15.122		
	NED	Kawasaki Ninja 300	19 181,5	6 173,9	13 181,5		
28	54	H. CABUK	2'15.647	2'15.647			
	TUR	Kawasaki Ninja 300	12 170,6	12 170,6			
29	17	G. NODERER	2'15.747	2'15.747	2'16.315		
	GER	Honda CBR500R	26 175,3	13 175,0	13 175,3		
30	21	A. BIDDLE	2'15.796	2'17.868	2'15.796		
	NZL	Kawasaki Ninja 300	23 177,6	11 173,4	12 177,6		
31	79	C. TAYLOR	2'16.277	2'16.313	2'16.277		
	GBR	Kawasaki Ninja 300	25 176,5	12 171,7	13 176,5		
32	130	R. FERREIRA	2'16.315	2'18.221	2'16.315		
	BRA	Yamaha YZF-R3	26 176,2	13 174,2	13 176,2		
33	9	R. DOORAKKERS	2'17.930	2'17.930	2'18.086		
	NED	Yamaha YZF-R3	23 174,8	12 174,8	11 171,2		
34	94	C. MITCHELL	2'18.021	2'18.541	2'18.021		
	GBR	Kawasaki Ninja 300	26 180,0	13 171,7	13 180,0		
35	62	J. SCHULTZ	2'18.180	2'20.477	2'18.180		
	RSA	Kawasaki Ninja 300	23 174,2	10 170,9	13 174,2		
36	7	N. SETTIMO	2'18.305	2'19.297	2'18.305		
	ITA	Yamaha YZF-R3	23 177,1	10 168,2	13 177,1		
37	11	N. CUPAIOLI	2'18.797	2'21.333	2'18.797		
	ITA	Yamaha YZF-R3	24 174,5	12 172,8	12 174,5		

12/05/2017

These data/results cannot be reproduced, stored and/or transmitted in whole or in part by any manner of electronic, mechanical, photocopying, recording, broadcasting or otherwise now known or herein after developed without the previous express consent by the copyright owner, except for reproduction in daily press and regular printed publications on sale to the public within 60 days of the event related to those data/results and always provided that copyright symbol appears together as follows below.

© DORNA WSBK ORGANIZATION Srl 2017

FICR PERUGIA TIMING



Official Tyre Supplier



Official Timekeeper