

Riviera di Rimini Round, 16-17-18 June 2017

World Supersport - Biographical Entry List

Misano Circuit Sic 58 4.226 m

No.	Rider (Abbreviation)	Nat	Bike	Wins	Podiums	Pole	Races	Tyres	Class
1	1 SOFUOGLU Kenan (Sof) 32 25/08/1984 Adapazari	TUR	Kawasaki ZX-6R Kawasaki Puccetti Racing	41	81	32	120	Pirelli	
2	4 REA Gino (Rea) 27 18/09/1989 Tooting	GBR	Kawasaki ZX-6R Team Kawasaki Go Eleven	1	7	2	53	Pirelli	
3	5 BASSANI Axel (Bas) 17 24/07/1999 Feltre	ITA	Kawasaki ZX-6R 3570 Puccetti Racing FMI				8	Pirelli	
4	9 LONDON Connor (Lon) 21 09/11/1995 Auckland	NZL	Suzuki GSX-R600 Phoenix Suzuki Racing				3	Pirelli	ESS
5	10 CALERO Nacho (Cal) 25 05/07/1991 Valencia	ESP	Kawasaki ZX-6R Orelac Racing VerdNatura				51	Pirelli	
6	11 GAMARINO Christian (Gam) 22 18/06/1994 Genova	ITA	Honda CBR600RR BARDAHL EVAN BROS. Honda Racing				41	Pirelli	
7*	13 WEST Anthony (Wes) 35 17/07/1981 Maryborough	AUS	Yamaha YZF R6 EAB West Racing	2	8	1	22	Pirelli	
8	16 CLUZEL Jules (Clu) 28 12/10/1988 Montlucon	FRA	Honda CBR600RR CIA Landlord Insurance Honda	12	29	19	51	Pirelli	
9	25 BALDOLINI Alex (Bal) 32 24/01/1985 Cesena	ITA	MV Agusta F3 675 Race Department ATK#25		1		53	Pirelli	
10	26 WATANABE Kazuki (Wat) 26 02/10/1990 Yamanashi	JPN	Kawasaki ZX-6R Team Kawasaki Go Eleven				6	Pirelli	
11	32 MORAIS Sheridan (Mor) 32 11/03/1985 Johannesburg	RSA	Yamaha YZF R6 Kallio Racing		2		31	Pirelli	
12	35 HILL Stefan (Hil) 19 23/02/1998 Coventry	GBR	Triumph Daytona 675 Profile Racing				16	Pirelli	
13	38 SOOMER Hannes (Soo) 19 17/02/1998 Tallinn	EST	Honda CBR600RR WILSport Racedays				8	Pirelli	ESS
14	44 ROLFO Roberto (Rol) 37 23/03/1980 Torino	ITA	MV Agusta F3 675 Team Factory Vamag	1	4		53	Pirelli	
15	47 HARTOG Rob (Har) 25 26/03/1992 Abbekerk	NED	Kawasaki ZX-6R Team Hartog - Jenik - Against Cancer				4	Pirelli	ESS
16	48 SCARCELLA Giuseppe (Sca) 23 18/03/1994 Five Dock	AUS	Honda CBR600RR GEMAR Team Lorini				2	Pirelli	
17	56 SEBESTYÉN Péter (Seb) 23 16/05/1994 Budapest	HUN	Kawasaki ZX-6R SSP Hungary by Pedercini Racing				4	Pirelli	ESS
18	61 ZACCONE Alessandro (Zac) 18 16/01/1999 Rimini	ITA	MV Agusta F3 675 MV Agusta Reparto Corse				12	Pirelli	ESS
19	63 KHAIRUDDIN Zulfahmi (Kha) 25 20/10/1991 Banting	MAS	Kawasaki ZX-6R Orelac Racing VerdNatura		1		18	Pirelli	
20	64 CARICASULO Federico (Car) 21 06/04/1996 Ravenna	ITA	Yamaha YZF R6 GRT Yamaha Official WorldSSP Team	1	2	1	18	Pirelli	
21	66 TUULI Niki (Tuu) 21 26/11/1995 Myrskylä	FIN	Yamaha YZF R6 Kallio Racing		4		10	Pirelli	
22	70 MULHAUSER Robin (Mul) 25 07/11/1991 Fribourg	SUI	Honda CBR600RR CIA Landlord Insurance Honda				7	Pirelli	
23	73 CRETARO Jacopo (Cre) 17 12/05/2000 Roma	ITA	Suzuki GSX-R600 Phoenix Suzuki Racing				3	Pirelli	ESS
24	74 VAN SIKKELERUS Jaimie (vSi) 20 25/05/1997 Curacao	NED	Yamaha YZF R6 MVR Racing				6	Pirelli	ESS
25	77 RYDE Kyle (Ryd) 19 22/07/1997 Nottingham	GBR	Kawasaki ZX-6R Kawasaki Puccetti Racing		1		17	Pirelli	
26	78 OKUBO Hikari (Oku) 23 11/08/1993 Kodaira	JPN	Honda CBR600RR CIA Landlord Insurance Honda				17	Pirelli	
27	81 STAPLEFORD Luke (Sta) 25 11/07/1991 Leicester	GBR	Triumph Daytona 675 Profile Racing			1	19	Pirelli	
28*	82 CIPICIANI Lorenzo (Cip) 27 08/02/1990 Gubbio	ITA	Honda CBR600RR Team VUEFFE Corse				1	Pirelli	
29	83 EPIS Lachlan (Epi) 17 22/12/1999 Blacktown	AUS	Kawasaki ZX-6R Response RE Racing				17	Pirelli	
30	84 CRESSON Loris (Crs) 18 14/08/1998 Braine L'Alleud	BEL	Yamaha YZF R6 Race Department ATK#25				6	Pirelli	
31	92 KUNIKAWA Hironichi (Kun) 35 05/11/1981 Chiba	JPN	Honda CBR600RR CIA Landlord Insurance Honda				2	Pirelli	ESS
32	99 JACOBSEN PJ (Jac) 23 07/08/1993 Montgomery	USA	MV Agusta F3 675 MV Agusta Reparto Corse	2	15	5	41	Pirelli	
33	111 SMITH Kyle (Smi) 25 16/09/1991 Huddersfield	GBR	Honda CBR600RR GEMAR Team Lorini	3	6	3	30	Pirelli	
34	144 MAHIAS Lucas (Mah) 28 14/04/1989 Mont de Marsan	FRA	Yamaha YZF R6 GRT Yamaha Official WorldSSP Team	1	6	5	17	Pirelli	
35*	163 STIRPE Davide (Sti) 24 01/08/1992 Rome	ITA	MV Agusta F3 675 Team Factory Vamag				8	Pirelli	

16/06/2017

* = Wild Card

These data/results cannot be reproduced, stored and/or transmitted in whole or in part by any manner of electronic, mechanical, photocopying, recording, broadcasting or otherwise now known or herein after developed without the previous express consent by the copyright owner, except for reproduction in daily press and regular printed publications on sale to the public within 60 days of the event related to those data/results and always provided that copyright symbol appears together as follows below.

© DORNA WSBK ORGANIZATION Srl 2017

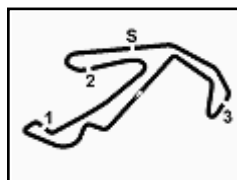
FICR PERUGIA TIMING



Official Tyre Supplier



Official Timekeeper



Riviera di Rimini Round, 16-17-18 June 2017

World Supersport - Results Free Practice 1st Session

Misano Circuit Sic 58 4.226 m

1 / 2

No.	Rider	Nat	Team	Bike	Class	Time	Gap	Rel.	Laps	Speed	
										Avg	Max
1	64 F. CARICASULO	ITA	GRT Yamaha Official WorldSSP Team	Yamaha YZF R6		1'39.376			20	153,091	236,3
2	144 L. MAHIAS	FRA	GRT Yamaha Official WorldSSP Team	Yamaha YZF R6		1'39.543	0.167	0.167	18	152,834	234,3
3	16 J. CLUZEL	FRA	CIA Landlord Insurance Honda	Honda CBR600RR		1'39.552	0.176	0.009	23	152,821	232,8
4	99 P. JACOBSEN	USA	MV Agusta Reparto Corse	MV Agusta F3 675		1'39.815	0.439	0.263	17	152,418	232,3
5	11 C. GAMARINO	ITA	BARDAHL EVAN BROS. Honda Racing	Honda CBR600RR		1'40.122	0.746	0.307	18	151,951	233,3
6	81 L. STAPLEFORD	GBR	Profile Racing	Triumph Daytona 675		1'40.190	0.814	0.068	23	151,847	234,3
7	4 G. REA	GBR	Team Kawasaki Go Eleven	Kawasaki ZX-6R		1'40.250	0.874	0.060	24	151,757	231,3
8	63 Z. KHAIRUDDIN	MAS	Orelac Racing VerdNatura	Kawasaki ZX-6R		1'40.353	0.977	0.103	21	151,601	230,8
9	84 L. CRESSON	BEL	Race Department ATK#25	Yamaha YZF R6		1'40.358	0.982	0.005	18	151,593	235,3
10	32 S. MORAIS	RSA	Kallio Racing	Yamaha YZF R6		1'40.368	0.992	0.010	24	151,578	232,3
11	78 H. OKUBO	JPN	CIA Landlord Insurance Honda	Honda CBR600RR		1'40.368	0.992	0.000	23	151,578	232,3
12	61 A. ZACCONI	ITA	MV Agusta Reparto Corse	MV Agusta F3 675	ESS	1'40.372	0.996	0.004	19	151,572	229,3
13	163 D. STIRPE	ITA	Team Factory Vamag	MV Agusta F3 675		1'40.416	1.040	0.044	21	151,506	228,8
14	13 A. WEST	AUS	EAB West Racing	Yamaha YZF R6		1'40.437	1.061	0.021	24	151,474	234,8
15	1 K. SOFUOGLU	TUR	Kawasaki Puccetti Racing	Kawasaki ZX-6R		1'40.665	1.289	0.228	4	151,131	229,3
16	44 R. ROLFO	ITA	Team Factory Vamag	MV Agusta F3 675		1'40.741	1.365	0.076	20	151,017	229,3
17	47 R. HARTOG	NED	Team Hartog - Jenik - Against Cancer	Kawasaki ZX-6R	ESS	1'40.971	1.595	0.230	24	150,673	232,3
18	38 H. SOOMER	EST	WILSport Racedays	Honda CBR600RR	ESS	1'41.003	1.627	0.032	25	150,625	232,3
19	25 A. BALDOLINI	ITA	Race Department ATK#25	MV Agusta F3 675		1'41.118	1.742	0.115	16	150,454	232,3
20	111 K. SMITH	GBR	GEMAR Team Lorini	Honda CBR600RR		1'41.149	1.773	0.031	12	150,408	231,8
21	66 N. TUULI	FIN	Kallio Racing	Yamaha YZF R6		1'41.254	1.878	0.105	11	150,252	232,8
22	70 R. MULHAUSER	SUI	CIA Landlord Insurance Honda	Honda CBR600RR		1'41.297	1.921	0.043	16	150,188	229,3
23	5 A. BASSANI	ITA	3570 Puccetti Racing FMI	Kawasaki ZX-6R		1'41.312	1.936	0.015	20	150,166	233,3
24	10 N. CALERO	ESP	Orelac Racing VerdNatura	Kawasaki ZX-6R		1'41.603	2.227	0.291	21	149,736	230,3
25	77 K. RYDE	GBR	Kawasaki Puccetti Racing	Kawasaki ZX-6R		1'41.722	2.346	0.119	22	149,561	232,3
26	83 L. EPIS	AUS	Response RE Racing	Kawasaki ZX-6R		1'41.768	2.392	0.046	22	149,493	229,3
27	56 P. SEBESTYÉN	HUN	SSP Hungary by Pedercini Racing	Kawasaki ZX-6R	ESS	1'41.835	2.459	0.067	21	149,395	230,3
28	74 J. VAN SIKKELERUS	NED	MVR Racing	Yamaha YZF R6	ESS	1'41.957	2.581	0.122	26	149,216	228,8
29	26 K. WATANABE	JPN	Team Kawasaki Go Eleven	Kawasaki ZX-6R		1'42.074	2.698	0.117	25	149,045	231,3
30	35 S. HILL	GBR	Profile Racing	Triumph Daytona 675		1'42.885	3.509	0.811	20	147,870	228,8
31	48 G. SCARCELLA	AUS	GEMAR Team Lorini	Honda CBR600RR		1'43.835	4.459	0.950	20	146,517	225,0
32	92 H. KUNIKAWA	JPN	CIA Landlord Insurance Honda	Honda CBR600RR	ESS	1'44.004	4.628	0.169	16	146,279	230,3
33	9 C. LONDON	NZL	Phoenix Suzuki Racing	Suzuki GSX-R600	ESS	1'44.599	5.223	0.595	19	145,447	220,9
----- Out 107% in this Session -----											
34	82 L. CIPICIANI	ITA	Team VUEFFE Corse	Honda CBR600RR		1'49.830	10.454	5.231	7	138,520	206,5
35	73 J. CRETARO	ITA	Phoenix Suzuki Racing	Suzuki GSX-R600	ESS				1		147,5

Qualifying Lap Time (107% of 1'39.376): 1'46.333

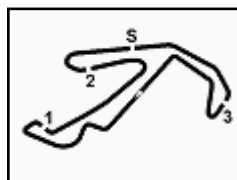
AIR	Humidity:	69%	Temp:	27°C
TRACK	Condition:	Dry	Temp:	44°C

Records	Pole (QP)	2015 J.Cluzel	1'37.482	156,070	Km/h
	Race (RC)	2015 J.Cluzel	1'38.239	154,860	Km/h
	Circuit (QP)	2015 J.Cluzel	1'37.482	156,070	Km/h

Start 16/06/2017 11:00 End 12:02 The results are provisional until the end of the time limit for protests and appeals and the completion of the technical checks.

These data/results cannot be reproduced, stored and/or transmitted in whole or in part by any manner of electronic, mechanical, photocopying, recording, broadcasting or otherwise now known or herein after developed without the previous express consent by the copyright owner, except for reproduction in daily press and regular printed publications on sale to the public within 60 days of the event related to those data/results and always provided that copyright symbol appears together as follows below.

© DORNA WSBK ORGANIZATION Srl 2017



Riviera di Rimini Round, 16-17-18 June 2017

World Supersport - Results Free Practice 1st Session

Misano Circuit Sic 58.4.226 m
2 / 2

Session Highlights

Local Time	No. Rider	Description
11.00.00		Start
11.06.57	83 L. EPIS	Lap Cancelled (1'44.806) - Exceeded Track Limits - Turn 11
11.07.50	83 L. EPIS	Lap Cancelled - Exceeded Track Limits - Turn 11
11.08.16	78 H. OKUBO	Lap Cancelled (1'48.676) - Exceeded Track Limits - Turn 11
11.09.24	92 H. KUNIKAWA	Lap Cancelled - Exceeded Track Limits - Turn 11
11.09.47	73 J. CRETARO	Technical Problem - Turn 10
11.10.16	1 K. SOFUOGLU	Technical Problem - Turn 8
11.11.59	111 K. SMITH	Lap Cancelled - Exceeded Track Limits - Turn 11
11.12.10	26 K. WATANABE	Lap Cancelled (1'44.089) - Exceeded Track Limits - Turn 11
11.13.48	92 H. KUNIKAWA	Crashed - Turn 4
11.13.58		WorldSSP Pit Intervention Time: 78secs
11.15.06	47 R. HARTOG	Lap Cancelled - Exceeded Track Limits - Turn 6
11.15.49	4 G. REA	Lap Cancelled - Exceeded Track Limits - Turn 11
11.17.25	82 L. CIPICIANI	Stop - Technical Problem
11.19.58	26 K. WATANABE	Lap Cancelled - Exceeded Track Limits - Turn 11
11.23.23	26 K. WATANABE	Lap Cancelled - Exceeded Track Limits - Turn 11
11.25.38	77 K. RYDE	Lap Cancelled - Exceeded Track Limits - Turn 11
11.26.05	78 H. OKUBO	Lap Cancelled - Exceeded Track Limits - Turn 11
11.27.20	70 R. MULHAUSER	Lap Cancelled - Exceeded Track Limits - Turn 11
11.30.05	77 K. RYDE	Lap Cancelled (1'42.121) - Exceeded Track Limits - Turn 11
11.33.57	4 G. REA	Lap Cancelled - Exceeded Track Limits - Turn 11
11.36.01	111 K. SMITH	Lap Cancelled - Exceeded Track Limits - Turn 11
11.38.06	84 L. CRESSON	Lap Cancelled (1'40.206) - Exceeded Track Limits - Turn 16
11.45.14	144 L. MAHIAS	Lap Cancelled - Exceeded Track Limits - Turn 11
11.46.18	70 R. MULHAUSER	Crashed - Turn 10
11.47.42	70 R. MULHAUSER	Re-joined
11.54.00	111 K. SMITH	Crashed - Turn 8
11.54.45	5 A. BASSANI	Lap Cancelled - Exceeded Track Limits - Turn 11
11.55.41	47 R. HARTOG	Lap Cancelled - Exceeded Track Limits - Turn 11
11.56.04	25 A. BALDOLINI	Crashed - Turn 8
11.56.31	47 R. HARTOG	Lap Cancelled (1'42.099) - Exceeded Track Limits - Turn 11
11.58.41	26 K. WATANABE	Lap Cancelled (1'41.668) - Exceeded Track Limits - Turn 11
11.59.04	5 A. BASSANI	Lap Cancelled (1'41.908) - Exceeded Track Limits - Turn 11
11.59.35	92 H. KUNIKAWA	Lap Cancelled - Exceeded Track Limits - Turn 11
12.00.34	25 A. BALDOLINI	Medical Centre
12.02.23		End Of Session

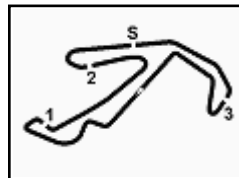
Fastest Laps Sequence

No.	Rider	Nat	Team	Bike	Local Time	Time	Gap	Avg
64	F. CARICASULO	ITA	GRT Yamaha Official WorldSSP Team	Yamaha YZF R6	11:03'39.001	1'42.583		148,305
1	K. SOFUOGLU	TUR	Kawasaki Puccetti Racing	Kawasaki ZX-6R	11:03'50.862	1'42.574	-0.009	148,318
64	F. CARICASULO	ITA	GRT Yamaha Official WorldSSP Team	Yamaha YZF R6	11:05'20.027	1'41.026	-1.548	150,591
64	F. CARICASULO	ITA	GRT Yamaha Official WorldSSP Team	Yamaha YZF R6	11:07'00.816	1'40.789	-0.237	150,945
1	K. SOFUOGLU	TUR	Kawasaki Puccetti Racing	Kawasaki ZX-6R	11:07'12.592	1'40.665	-0.124	151,131
64	F. CARICASULO	ITA	GRT Yamaha Official WorldSSP Team	Yamaha YZF R6	11:08'41.300	1'40.484	-0.181	151,403
64	F. CARICASULO	ITA	GRT Yamaha Official WorldSSP Team	Yamaha YZF R6	11:10'21.435	1'40.135	-0.349	151,931
64	F. CARICASULO	ITA	GRT Yamaha Official WorldSSP Team	Yamaha YZF R6	11:25'05.039	1'39.984	-0.151	152,160
64	F. CARICASULO	ITA	GRT Yamaha Official WorldSSP Team	Yamaha YZF R6	11:41'56.532	1'39.757	-0.227	152,507
64	F. CARICASULO	ITA	GRT Yamaha Official WorldSSP Team	Yamaha YZF R6	11:54'54.762	1'39.575	-0.182	152,785
144	L. MAHIAS	FRA	GRT Yamaha Official WorldSSP Team	Yamaha YZF R6	11:56'26.967	1'39.543	-0.032	152,834
64	F. CARICASULO	ITA	GRT Yamaha Official WorldSSP Team	Yamaha YZF R6	11:56'34.138	1'39.376	-0.167	153,091

Start 11:00 End 12:02
The results are provisional until the end of the time limit for protests and appeals and the completion of the technical checks.

These data/results cannot be reproduced, stored and/or transmitted in whole or in part by any manner of electronic, mechanical, photocopying, recording, broadcasting or otherwise now known or herein after developed without the previous express consent by the copyright owner, except for reproduction in daily press and regular printed publications on sale to the public within 60 days of the event related to those data/results and always provided that copyright symbol appears together as follows below.

© DORNA WSBK ORGANIZATION Srl 2017



Riviera di Rimini Round, 16-17-18 June 2017

World Supersport - Ideal Times Free Practice 1st Session

Misano Circuit Sic 58 4.226 m
1 / 2

No.	Rider	Nat	Bike	Seg. 1	Seg. 2	Seg. 3	Seg. 4	Seg. 5	Ideal Time		
				Diff. 1	Diff. 2	Diff. 3	Diff. 4	Diff. 5	Best Lap	Pos.	Diff.
1	64 F. CARICASULO	ITA	Yamaha YZF R6	26.872	22.808 0.089	14.148 0.064	13.110 0.017	22.248 0.020	1'39.186 1'39.376	2	0.190
2	144 L. MAHIAS	FRA	Yamaha YZF R6	26.850 0.142	22.730	14.146	13.209 0.123	22.343	1'39.278 1'39.543	3	0.265
3	16 J. CLUZEL	FRA	Honda CBR600RR	27.045	22.754	14.232 0.035	13.017	22.300 0.169	1'39.348 1'39.552	4	0.204
4	99 P. JACOBSEN	USA	MV Agusta F3 675	27.224 0.062	22.793	14.233	13.115	22.388	1'39.753 1'39.815	5	0.062
5	11 C. GAMARINO	ITA	Honda CBR600RR	26.998	22.922 0.175	14.185 0.085	13.198 0.064	22.495	1'39.798 1'40.122	6	0.324
6	63 Z. KHAIRUDDIN	MAS	Kawasaki ZX-6R	26.935 0.272	22.858 0.045	14.280 0.152	13.327	22.484	1'39.884 1'40.353	9	0.469
7	84 L. CRESSON	BEL	Yamaha YZF R6	27.318 0.251	22.830 0.121	14.248 0.016	13.107 0.020	22.447	1'39.950 1'40.358	10	0.408
8	4 G. REA	GBR	Kawasaki ZX-6R	27.203	22.869 0.035	14.308 0.002	13.170 0.052	22.611	1'40.161 1'40.250	8	0.089
9	81 L. STAPLEFORD	GBR	Triumph Daytona 675	27.189	22.992	14.250	13.327	22.432	1'40.190 1'40.190	7	
10	13 A. WEST	AUS	Yamaha YZF R6	27.234 0.058	22.941 0.011	14.310 0.069	13.215 0.017	22.500 0.082	1'40.200 1'40.437	15	0.237
11	61 A. ZACCONE	ITA	MV Agusta F3 675	27.197 0.097	22.932	14.301	13.280	22.528 0.037	1'40.238 1'40.372	13	0.134
12	32 S. MORAIS	RSA	Yamaha YZF R6	27.157	22.896	14.315 0.005	13.266 0.041	22.621 0.067	1'40.255 1'40.368	11	0.113
13	163 D. STIRPE	ITA	MV Agusta F3 675	27.183	23.005	14.499 0.082	13.142	22.505	1'40.334 1'40.416	14	0.082
14	78 H. OKUBO	JPN	Honda CBR600RR	27.155	23.127 0.027	14.292	13.201	22.566	1'40.341 1'40.368	12	0.027
15	47 R. HARTOG	NED	Kawasaki ZX-6R	27.214 0.214	23.086 0.068	14.276	13.336 0.026	22.602 0.149	1'40.514 1'40.971	18	0.457
16	111 K. SMITH	GBR	Honda CBR600RR	27.189 0.373	23.097 0.215	14.231	13.259	22.780 0.005	1'40.556 1'41.149	21	0.593
17	1 K. SOFUOGLU	TUR	Kawasaki ZX-6R	27.287	23.225 0.059	14.334	13.144	22.616	1'40.606 1'40.665	16	0.059
18	44 R. ROLFO	ITA	MV Agusta F3 675	27.268	23.044	14.428 0.110	13.224	22.667	1'40.631 1'40.741	17	0.110
19	38 H. SOOMER	EST	Honda CBR600RR	27.304	23.052 0.087	14.391	13.287 0.065	22.712 0.105	1'40.746 1'41.003	19	0.257
20	70 R. MULHAUSER	SUI	Honda CBR600RR	27.329 0.282	22.995	14.526 0.033	13.347 0.077	22.621 0.087	1'40.818 1'41.297	23	0.479
21	5 A. BASSANI	ITA	Kawasaki ZX-6R	27.398	23.176 0.080	14.279 0.128	13.269 0.153	22.735 0.094	1'40.857 1'41.312	24	0.455
22	25 A. BALDOLINI	ITA	MV Agusta F3 675	27.447	23.168 0.062	14.407	13.295	22.651 0.088	1'40.968 1'41.118	20	0.150
23	66 N. TUULI	FIN	Yamaha YZF R6	27.402	23.143 0.038	14.466 0.194	13.168 0.045	22.798	1'40.977 1'41.254	22	0.277
24	26 K. WATANABE	JPN	Kawasaki ZX-6R	27.336	23.214 0.178	14.352 0.352	13.460 0.141	22.820 0.221	1'41.182 1'42.074	30	0.892
25	10 N. CALERO	ESP	Kawasaki ZX-6R	27.433 0.111	23.371	14.394	13.476	22.574 0.244	1'41.248 1'41.603	25	0.355
26	77 K. RYDE	GBR	Kawasaki ZX-6R	27.509	23.528 0.098	14.367	13.146 0.035	23.039	1'41.589 1'41.722	26	0.133
27	74 J. VAN SIKKELERUS	NED	Yamaha YZF R6	27.533 0.104	23.298 0.237	14.449	13.546	22.790	1'41.616 1'41.957	29	0.341
28	56 P. SEBESTYÉN	HUN	Kawasaki ZX-6R	27.614 0.036	23.167 0.017	14.511 0.003	13.613	22.802 0.072	1'41.707 1'41.835	28	0.128
29	83 L. EPIS	AUS	Kawasaki ZX-6R	27.528	23.415	14.367	13.340	23.082 0.036	1'41.732 1'41.768	27	0.036
30	35 S. HILL	GBR	Triumph Daytona 675	27.815 0.071	23.342 0.247	14.524	13.637 0.138	23.111	1'42.429 1'42.885	31	0.456
31	92 H. KUNIKAWA	JPN	Honda CBR600RR	28.116 0.565	23.886	14.513 0.024	13.709	23.171 0.020	1'43.395 1'44.004	33	0.609
32	48 G. SCARCELLA	AUS	Honda CBR600RR	28.155 0.160	23.544	14.705 0.107	13.707 0.029	23.304 0.124	1'43.415 1'43.835	32	0.420
33	9 C. LONDON	NZL	Suzuki GSX-R600	28.216 0.306	23.877	14.721 0.157	13.924	23.134 0.264	1'43.872 1'44.599	34	0.727

16/06/2017

These data/results cannot be reproduced, stored and/or transmitted in whole or in part by any manner of electronic, mechanical, photocopying, recording, broadcasting or otherwise now known or herein after developed without the previous express consent by the copyright owner, except for reproduction in daily press and regular printed publications on sale to the public within 60 days of the event related to those data/results and always provided that copyright symbol appears together as follows below.

© DORNA WSBK ORGANIZATION Srl 2017

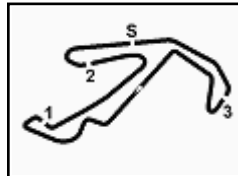
FICR PERUGIA TIMING



Official Tyre Supplier



Official Timekeeper

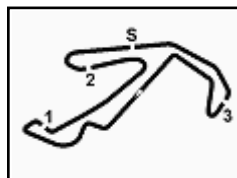

Riviera di Rimini Round, 16-17-18 June 2017
World Supersport - Ideal Times Free Practice 1st Session

 Misano Circuit Sic 58 4.226 m
2 / 2

No. Rider	Nat	Bike	Seg. 1	Seg. 2	Seg. 3	Seg. 4	Seg. 5	Ideal Time			
			Diff. 1	Diff. 2	Diff. 3	Diff. 4	Diff. 5	Best Lap	Pos.	Diff.	
34	82 L. CIPICIANI	ITA	Honda CBR600RR	29.188	25.339	15.455 0.169	15.315	24.364	1'49.661	35	0.169
Overall Ideal Time			26.850	22.730	14.146	13.017	22.248	1'38.991			

16/06/2017
 These data/results cannot be reproduced, stored and/or transmitted in whole or in part by any manner of electronic, mechanical, photocopying, recording, broadcasting or otherwise now known or herein after developed without the previous express consent by the copyright owner, except for reproduction in daily press and regular printed publications on sale to the public within 60 days of the event related to those data/results and always provided that copyright symbol appears together as follows below.
 © DORNA WSBK ORGANIZATION Srl 2017





Riviera di Rimini Round, 16-17-18 June 2017

World Supersport - Chronological Analysis Free Practice 1st Session

Misano Circuit Sic 58.4.226 m

3 / 6

Table with 7 columns: Lap, Seg. 1, Seg. 2, Seg. 3, Seg. 4, Seg. 5, Lap Time, km/h, Local Time. Row 1: 20 27.183 23.005 14.581 13.142 22.505 1'40.416 P 227.8 11:56'28.025

14° 13 A. WEST (1'40.437)

Table for rider 13 A. WEST with 7 columns: Lap, Seg. 1, Seg. 2, Seg. 3, Seg. 4, Seg. 5, Lap Time, km/h, Local Time. Rows 1-24.

15° 1 K. SOFUOGLU (1'40.665)

Table for rider 1 K. SOFUOGLU with 7 columns: Lap, Seg. 1, Seg. 2, Seg. 3, Seg. 4, Seg. 5, Lap Time, km/h, Local Time. Rows 1-4.

16° 44 R. ROLFO (1'40.741)

Table for rider 44 R. ROLFO with 7 columns: Lap, Seg. 1, Seg. 2, Seg. 3, Seg. 4, Seg. 5, Lap Time, km/h, Local Time. Rows 1-20.

17° 47 R. HARTOG (1'40.971)

Table for rider 47 R. HARTOG with 7 columns: Lap, Seg. 1, Seg. 2, Seg. 3, Seg. 4, Seg. 5, Lap Time, km/h, Local Time. Rows 1-13.

Table for rider 38 H. SOOMER with 7 columns: Lap, Seg. 1, Seg. 2, Seg. 3, Seg. 4, Seg. 5, Lap Time, km/h, Local Time. Rows 1-24.

18° 38 H. SOOMER (1'41.003)

Table for rider 38 H. SOOMER with 7 columns: Lap, Seg. 1, Seg. 2, Seg. 3, Seg. 4, Seg. 5, Lap Time, km/h, Local Time. Rows 1-25.

19° 25 A. BALDOLINI (1'41.118)

Table for rider 25 A. BALDOLINI with 7 columns: Lap, Seg. 1, Seg. 2, Seg. 3, Seg. 4, Seg. 5, Lap Time, km/h, Local Time. Rows 1-16.

20° 111 K. SMITH (1'41.149)

Table for rider 111 K. SMITH with 7 columns: Lap, Seg. 1, Seg. 2, Seg. 3, Seg. 4, Seg. 5, Lap Time, km/h, Local Time. Rows 1-12.

21° 66 N. TUULI (1'41.254)

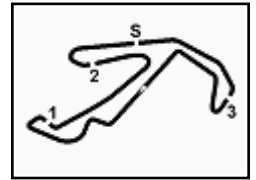
Table for rider 66 N. TUULI with 7 columns: Lap, Seg. 1, Seg. 2, Seg. 3, Seg. 4, Seg. 5, Lap Time, km/h, Local Time. Row 1.

P = Pits In/Out - C = Lap-Time Cancelled

These data/results cannot be reproduced, stored and/or transmitted in whole or in part by any manner of electronic, mechanical, photocopying, recording, broadcasting or otherwise now known or herein after developed without the previous express consent by the copyright owner, except for reproduction in daily press and regular printed publications on sale to the public within 60 days of the event related to those data/results and always provided that copyright symbol appears together as follows below.

© DORNA WSBK ORGANIZATION Srl 2017





Riviera di Rimini Round, 16-17-18 June 2017
World Supersport - Chronological Analysis Free Practice 1st Session

6	30.194	25.541	15.917	15.350	24.451	1'51.453	201.1	11:15'10.341
7	29.188	25.339	15.624	15.315	24.364	1'49.830	204.2	11:17'00.171

35° 73 J. CRETARO								
Lap	Seg. 1	Seg. 2	Seg. 3	Seg. 4	Seg. 5	Lap Time	km/h	Local Time
1	1'20.669	36.752	21.635	17.130	28.747	3'04.933 P	147.5	11:03'17.958 11:06'22.891

16/06/2017 P = Pits In/Out - C = Lap-Time Cancelled

These data/results cannot be reproduced, stored and/or transmitted in whole or in part by any manner of electronic, mechanical, photocopying, recording, broadcasting or otherwise now known or herein after developed without the previous express consent by the copyright owner, except for reproduction in daily press and regular printed publications on sale to the public within 60 days of the event related to those data/results and always provided that copyright symbol appears together as follows below.

© DORNA WSBK ORGANIZATION Srl 2017

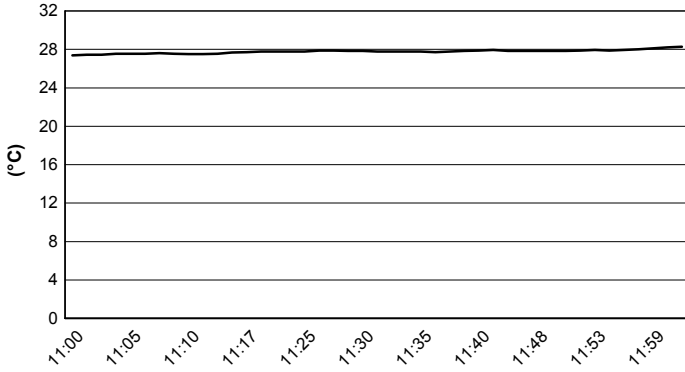


Riviera di Rimini Round, 16-17-18 June 2017
World Supersport - Weather Report Free Practice 1st Session

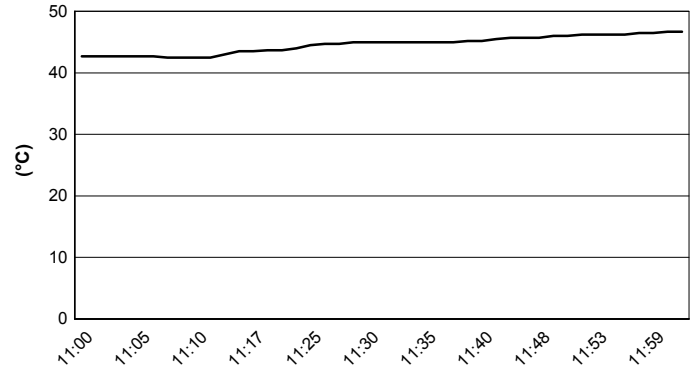
Misano Circuit Sic 58 4.226 m

Session started 11:00 Session ended 12:02

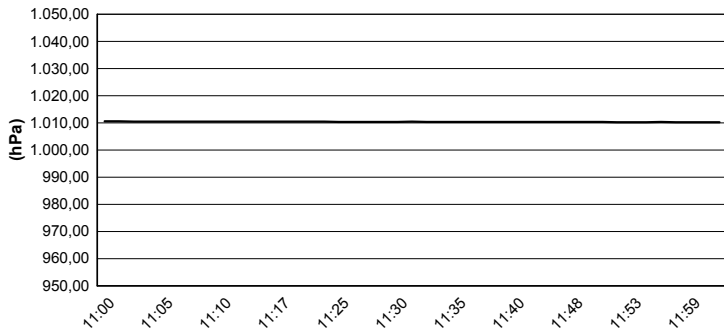
Air Temperature



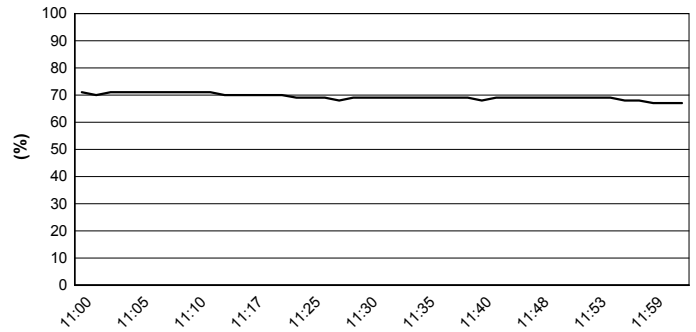
Track Temperature



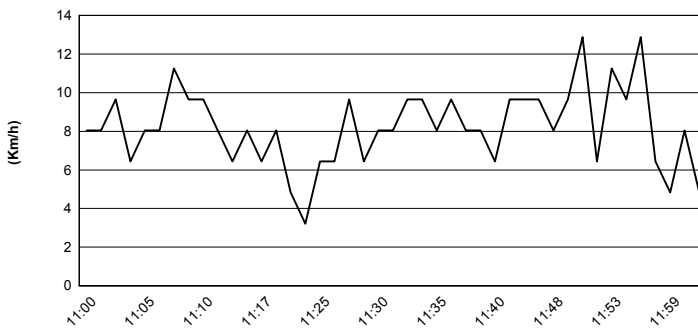
Air Pressure



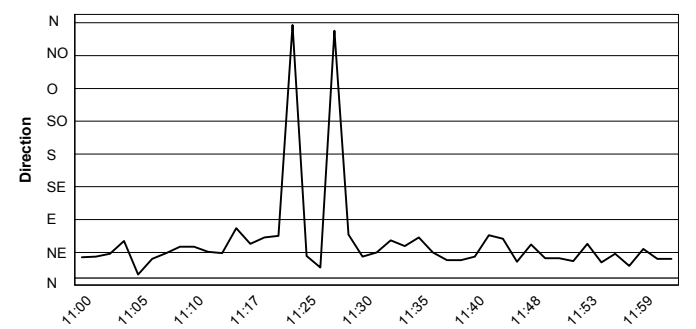
Humidity



Wind Speed



Wind Direction



16/06/2017

These data/results cannot be reproduced, stored and/or transmitted in whole or in part by any manner of electronic, mechanical, photocopying, recording, broadcasting or otherwise now known or herein after developed without the previous express consent by the copyright owner, except for reproduction in daily press and regular printed publications on sale to the public within 60 days of the event related to those data/results and always provided that copyright symbol appears together as follows below.

© DORNA WSBK ORGANIZATION Srl 2017