

## Riviera di Rimini Round, 16-17-18 June 2017

### World Supersport - Free Practices Combined Results

Misano Circuit Sic 58 4.226 m

No.	Rider	Nat	Team	Bike	Class	FP1	FP2	Time	Gap	Rel.	Avg	Laps
1	<b>1 K. SOFUOGLU</b>	TUR	Kawasaki Puccetti Racing	Kawasaki ZX-6R		1'40.665	<b>1'39.102</b>	<b>1'39.102</b>			153,515	28
2	<b>4 G. REA</b>	GBR	Team Kawasaki Go Eleven	Kawasaki ZX-6R		1'40.250	<b>1'39.258</b>	<b>1'39.258</b>	0.156	0.156	153,273	51
3	<b>99 P. JACOBSEN</b>	USA	MV Agusta Reparto Corse	MV Agusta F3 675		1'39.815	<b>1'39.307</b>	<b>1'39.307</b>	0.205	0.049	153,198	36
4	<b>16 J. CLUZEL</b>	FRA	CIA Landlord Insurance Honda	Honda CBR600RR		1'39.552	<b>1'39.313</b>	<b>1'39.313</b>	0.211	0.006	153,188	46
5	<b>64 F. CARICASULO</b>	ITA	GRT Yamaha Official WorldSSP Team	Yamaha YZF R6		<b>1'39.376</b>	1'39.521	<b>1'39.376</b>	0.274	0.063	153,091	38
6	<b>11 C. GAMARINO</b>	ITA	BARDAHL EVAN BROS. Honda Racing	Honda CBR600RR		1'40.122	<b>1'39.403</b>	<b>1'39.403</b>	0.301	0.027	153,050	35
7	<b>81 L. STAPLEFORD</b>	GBR	Profile Racing	Triumph Daytona 675		1'40.190	<b>1'39.465</b>	<b>1'39.465</b>	0.363	0.062	152,954	43
8	<b>5 A. BASSANI</b>	ITA	3570 Puccetti Racing FMI	Kawasaki ZX-6R		1'41.312	<b>1'39.507</b>	<b>1'39.507</b>	0.405	0.042	152,890	43
9	<b>144 L. MAHIAS</b>	FRA	GRT Yamaha Official WorldSSP Team	Yamaha YZF R6		1'39.543	<b>1'39.524</b>	<b>1'39.524</b>	0.422	0.017	152,864	39
10	<b>13 A. WEST</b>	AUS	EAB West Racing	Yamaha YZF R6		1'40.437	<b>1'39.544</b>	<b>1'39.544</b>	0.442	0.020	152,833	49
11	<b>78 H. OKUBO</b>	JPN	CIA Landlord Insurance Honda	Honda CBR600RR		1'40.368	<b>1'39.674</b>	<b>1'39.674</b>	0.572	0.130	152,634	42
12	<b>111 K. SMITH</b>	GBR	GEMAR Team Lorini	Honda CBR600RR		1'41.149	<b>1'39.754</b>	<b>1'39.754</b>	0.652	0.080	152,511	28
13	<b>163 D. STIRPE</b>	ITA	Team Factory Vamag	MV Agusta F3 675		1'40.416	<b>1'39.758</b>	<b>1'39.758</b>	0.656	0.004	152,505	39
14	<b>32 S. MORAIS</b>	RSA	Kallio Racing	Yamaha YZF R6		1'40.368	<b>1'39.872</b>	<b>1'39.872</b>	0.770	0.114	152,331	45
15	<b>61 A. ZACCONI</b>	ITA	MV Agusta Reparto Corse	MV Agusta F3 675	ESS	1'40.372	<b>1'40.032</b>	<b>1'40.032</b>	0.930	0.160	152,087	41
16	<b>47 R. HARTOG</b>	NED	GRT Yamaha - Jenik - Against Cancer	Kawasaki ZX-6R	ESS	1'40.971	<b>1'40.151</b>	<b>1'40.151</b>	1.049	0.119	151,907	46
17	<b>63 Z. KHAIRUDDIN</b>	MAS	Orelac Racing VerdNatura	Kawasaki ZX-6R		<b>1'40.353</b>	1'40.683	<b>1'40.353</b>	1.251	0.202	151,601	28
18	<b>84 L. CRESSON</b>	BEL	Race Department ATK#25	Yamaha YZF R6		<b>1'40.358</b>	1'40.941	<b>1'40.358</b>	1.256	0.005	151,593	24
19	<b>38 H. SOOMER</b>	EST	WILSport Racedays	Honda CBR600RR	ESS	1'41.003	<b>1'40.419</b>	<b>1'40.419</b>	1.317	0.061	151,501	51
20	<b>26 K. WATANABE</b>	JPN	Team Kawasaki Go Eleven	Kawasaki ZX-6R		1'42.074	<b>1'40.509</b>	<b>1'40.509</b>	1.407	0.090	151,366	47
21	<b>44 R. ROLFO</b>	ITA	Team Factory Vamag	MV Agusta F3 675		<b>1'40.741</b>	1'40.791	<b>1'40.741</b>	1.639	0.232	151,017	39
22	<b>56 P. SEBESTYÉN</b>	HUN	SSP Hungary by Pedercini Racing	Kawasaki ZX-6R	ESS	1'41.835	<b>1'40.780</b>	<b>1'40.780</b>	1.678	0.039	150,959	37
23	<b>10 N. CALERO</b>	ESP	Orelac Racing VerdNatura	Kawasaki ZX-6R		1'41.603	<b>1'40.793</b>	<b>1'40.793</b>	1.691	0.013	150,939	41
24	<b>74 J. VAN SIKKELERUS</b>	NED	MVR Racing	Yamaha YZF R6	ESS	1'41.957	<b>1'40.903</b>	<b>1'40.903</b>	1.801	0.110	150,775	51
25	<b>70 R. MULHAUSER</b>	SUI	CIA Landlord Insurance Honda	Honda CBR600RR		1'41.297	<b>1'41.004</b>	<b>1'41.004</b>	1.902	0.101	150,624	33
26	<b>66 N. TUULI</b>	FIN	Kallio Racing	Yamaha YZF R6		1'41.254	<b>1'41.007</b>	<b>1'41.007</b>	1.905	0.003	150,619	28
27	<b>25 A. BALDOLINI</b>	ITA	Race Department ATK#25	MV Agusta F3 675		<b>1'41.118</b>		<b>1'41.118</b>	2.016	0.111	150,454	16
28	<b>77 K. RYDE</b>	GBR	Kawasaki Puccetti Racing	Kawasaki ZX-6R		1'41.722	<b>1'41.327</b>	<b>1'41.327</b>	2.225	0.209	150,144	43
29	<b>83 L. EPIS</b>	AUS	Response RE Racing	Kawasaki ZX-6R		1'41.768	<b>1'41.395</b>	<b>1'41.395</b>	2.293	0.068	150,043	44
30	<b>82 L. CIPICIANI</b>	ITA	Team VUEFFE Corse	Honda CBR600RR		1'49.830	<b>1'41.440</b>	<b>1'41.440</b>	2.338	0.045	149,976	29
31	<b>35 S. HILL</b>	GBR	Profile Racing	Triumph Daytona 675		1'42.885	<b>1'41.808</b>	<b>1'41.808</b>	2.706	0.368	149,434	36
32	<b>73 J. CRETARO</b>	ITA	Phoenix Suzuki Racing	Suzuki GSX-R600	ESS		<b>1'41.908</b>	<b>1'41.908</b>	2.806	0.100	149,288	20
33	<b>9 C. LONDON</b>	NZL	Phoenix Suzuki Racing	Suzuki GSX-R600	ESS	1'44.599	<b>1'43.023</b>	<b>1'43.023</b>	3.921	1.115	147,672	40
34	<b>92 H. KUNIKAWA</b>	JPN	CIA Landlord Insurance Honda	Honda CBR600RR	ESS	1'44.004	<b>1'43.199</b>	<b>1'43.199</b>	4.097	0.176	147,420	27
35	<b>48 G. SCARCELLA</b>	AUS	GEMAR Team Lorini	Honda CBR600RR		1'43.835	<b>1'43.750</b>	<b>1'43.750</b>	4.648	0.551	146,637	25

16/06/2017

These data/results cannot be reproduced, stored and/or transmitted in whole or in part by any manner of electronic, mechanical, photocopying, recording, broadcasting or otherwise now known or herein after developed without the previous express consent by the copyright owner, except for reproduction in daily press and regular printed publications on sale to the public within 60 days of the event related to those data/results and always provided that copyright symbol appears together as follows below.

© DORNA WSBK ORGANIZATION Srl 2017

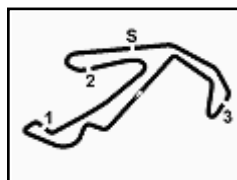
FICR PERUGIA TIMING



Official Tyre Supplier



Official Timekeeper



## Riviera di Rimini Round, 16-17-18 June 2017

### World Supersport - Results Free Practice 2nd Session

Misano Circuit Sic 58 4.226 m

1 / 3

No.	Rider	Nat	Team	Bike	Class	Time	Gap	Rel.	Laps	Speed	
										Avg	Max
1	1 K. SOFUOGLU	TUR	Kawasaki Puccetti Racing	Kawasaki ZX-6R		<b>1'39.102</b>			24	153,515	<b>232,8</b>
2	4 G. REA	GBR	Team Kawasaki Go Eleven	Kawasaki ZX-6R		<b>1'39.258</b>	0.156	0.156	27	153,273	<b>231,8</b>
3	99 P. JACOBSEN	USA	MV Agusta Reparto Corse	MV Agusta F3 675		<b>1'39.307</b>	0.205	0.049	19	153,198	<b>230,8</b>
4	16 J. CLUZEL	FRA	CIA Landlord Insurance Honda	Honda CBR600RR		<b>1'39.313</b>	0.211	0.006	23	153,188	<b>230,8</b>
5	11 C. GAMARINO	ITA	BARDAHL EVAN BROS. Honda Racing	Honda CBR600RR		<b>1'39.403</b>	0.301	0.090	17	153,050	<b>231,3</b>
6	81 L. STAPLEFORD	GBR	Profile Racing	Triumph Daytona 675		<b>1'39.465</b>	0.363	0.062	20	152,954	<b>232,8</b>
7	5 A. BASSANI	ITA	3570 Puccetti Racing FMI	Kawasaki ZX-6R		<b>1'39.507</b>	0.405	0.042	23	152,890	<b>233,8</b>
8	64 F. CARICASULO	ITA	GRT Yamaha Official WorldSSP Team	Yamaha YZF R6		<b>1'39.521</b>	0.419	0.014	18	152,868	<b>236,3</b>
9	144 L. MAHIAS	FRA	GRT Yamaha Official WorldSSP Team	Yamaha YZF R6		<b>1'39.524</b>	0.422	0.003	21	152,864	<b>230,3</b>
10	13 A. WEST	AUS	EAB West Racing	Yamaha YZF R6		<b>1'39.544</b>	0.442	0.020	25	152,833	<b>231,8</b>
11	78 H. OKUBO	JPN	CIA Landlord Insurance Honda	Honda CBR600RR		<b>1'39.674</b>	0.572	0.130	19	152,634	<b>232,8</b>
12	111 K. SMITH	GBR	GEMAR Team Lorini	Honda CBR600RR		<b>1'39.754</b>	0.652	0.080	16	152,511	<b>231,3</b>
13	163 D. STIRPE	ITA	Team Factory Vamag	MV Agusta F3 675		<b>1'39.758</b>	0.656	0.004	18	152,505	<b>227,8</b>
14	32 S. MORAIS	RSA	Kallio Racing	Yamaha YZF R6		<b>1'39.872</b>	0.770	0.114	21	152,331	<b>232,8</b>
15	61 A. ZACCONE	ITA	MV Agusta Reparto Corse	MV Agusta F3 675	ESS	<b>1'40.032</b>	0.930	0.160	22	152,087	<b>228,8</b>
16	47 R. HARTOG	NED	Team Hartog - Jenik - Against Cancer	Kawasaki ZX-6R	ESS	<b>1'40.151</b>	1.049	0.119	22	151,907	<b>231,8</b>
17	38 H. SOOMER	EST	WILSport Racedays	Honda CBR600RR	ESS	<b>1'40.419</b>	1.317	0.268	26	151,501	<b>229,8</b>
18	26 K. WATANABE	JPN	Team Kawasaki Go Eleven	Kawasaki ZX-6R		<b>1'40.509</b>	1.407	0.090	22	151,366	<b>231,3</b>
19	63 Z. KHAIRUDDIN	MAS	Orelac Racing VerdNatura	Kawasaki ZX-6R		<b>1'40.683</b>	1.581	0.174	7	151,104	<b>228,3</b>
20	56 P. SEBESTYÉN	HUN	SSP Hungary by Pedercini Racing	Kawasaki ZX-6R	ESS	<b>1'40.780</b>	1.678	0.097	16	150,959	<b>227,4</b>
21	44 R. ROLFO	ITA	Team Factory Vamag	MV Agusta F3 675		<b>1'40.791</b>	1.689	0.011	19	150,942	<b>231,8</b>
22	10 N. CALERO	ESP	Orelac Racing VerdNatura	Kawasaki ZX-6R		<b>1'40.793</b>	1.691	0.002	20	150,939	<b>230,3</b>
23	74 J. VAN SIKKELERUS	NED	MVR Racing	Yamaha YZF R6	ESS	<b>1'40.903</b>	1.801	0.110	25	150,775	<b>229,8</b>
24	84 L. CRESSON	BEL	Race Department ATK#25	Yamaha YZF R6		<b>1'40.941</b>	1.839	0.038	6	150,718	<b>233,8</b>
25	70 R. MULHAUSER	SUI	CIA Landlord Insurance Honda	Honda CBR600RR		<b>1'41.004</b>	1.902	0.063	17	150,624	<b>229,8</b>
26	66 N. TUULI	FIN	Kallio Racing	Yamaha YZF R6		<b>1'41.007</b>	1.905	0.003	17	150,619	<b>230,3</b>
27	77 K. RYDE	GBR	Kawasaki Puccetti Racing	Kawasaki ZX-6R		<b>1'41.327</b>	2.225	0.320	21	150,144	<b>232,8</b>
28	83 L. EPIS	AUS	Response RE Racing	Kawasaki ZX-6R		<b>1'41.395</b>	2.293	0.068	22	150,043	<b>229,3</b>
29	82 L. CIPICIANI	ITA	Team VUEFFE Corse	Honda CBR600RR		<b>1'41.440</b>	2.338	0.045	22	149,976	<b>231,8</b>
30	35 S. HILL	GBR	Profile Racing	Triumph Daytona 675		<b>1'41.808</b>	2.706	0.368	16	149,434	<b>228,3</b>
31	73 J. CRETARO	ITA	Phoenix Suzuki Racing	Suzuki GSX-R600	ESS	<b>1'41.908</b>	2.806	0.100	19	149,288	<b>230,8</b>
32	9 C. LONDON	NZL	Phoenix Suzuki Racing	Suzuki GSX-R600	ESS	<b>1'43.023</b>	3.921	1.115	21	147,672	<b>226,4</b>
33	92 H. KUNIKAWA	JPN	CIA Landlord Insurance Honda	Honda CBR600RR	ESS	<b>1'43.199</b>	4.097	0.176	11	147,420	<b>229,3</b>
34	48 G. SCARCELLA	AUS	GEMAR Team Lorini	Honda CBR600RR		<b>1'43.750</b>	4.648	0.551	5	146,637	<b>223,1</b>
35	25 A. BALDOLINI	ITA	Race Department ATK#25	MV Agusta F3 675					0		

Qualifying Lap Time (107% of 1'39.102): **1'46.040**

N.25 (Baldolini A.) has been declared unfit after FP1

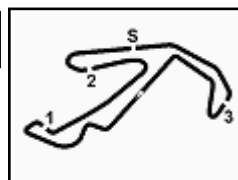
AIR	Humidity:	58%	Temp:	29°C
TRACK	Condition:	Dry	Temp:	46°C

Records	Pole (QP)	2015 J.Cluzel	1'37.482	156,070	Km/h
	Race (RC)	2015 J.Cluzel	1'38.239	154,860	Km/h
	Circuit (QP)	2015 J.Cluzel	1'37.482	156,070	Km/h

Start 16/06/2017 15:45 End 16:46 The results are provisional until the end of the time limit for protests and appeals and the completion of the technical checks.

These data/results cannot be reproduced, stored and/or transmitted in whole or in part by any manner of electronic, mechanical, photocopying, recording, broadcasting or otherwise now known or herein after developed without the previous express consent by the copyright owner, except for reproduction in daily press and regular printed publications on sale to the public within 60 days of the event related to those data/results and always provided that copyright symbol appears together as follows below.

© DORNA WSBK ORGANIZATION Srl 2017



## Riviera di Rimini Round, 16-17-18 June 2017

### World Supersport - Results Free Practice 2nd Session

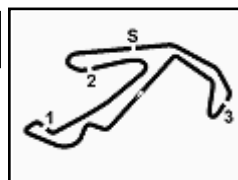
#### Session Highlights

Local Time	No. Rider	Description
15.45.10		WorldSSP Pit Intervention Time: 78secs
15.45.00		Start
15.50.38	144 L. MAHIAS	Lap Cancelled (1'41.347) - Exceeded Track Limits - Turn 16
15.51.05	56 P. SEBESTYÉN	Lap Cancelled (1'44.885) - Exceeded Track Limits - Turn 11
15.51.12	11 C. GAMARINO	Crashed - Turn 4
15.51.42	11 C. GAMARINO	Re-joined
15.51.47	92 H. KUNIKAWA	Lap Cancelled - Exceeded Track Limits - Turn 11
15.52.09	26 K. WATANABE	Lap Cancelled - Exceeded Track Limits - Turn 11
15.52.41	77 K. RYDE	Lap Cancelled (1'42.071) - Exceeded Track Limits - Turn 11
15.53.42	48 G. SCARCELLA	Stop - Technical Problem
15.54.00	84 L. CRESSON	Lap Cancelled - Exceeded Track Limits - Turn 11
15.54.30	92 H. KUNIKAWA	Crashed - Turn 4
15.55.13	5 A. BASSANI	Lap Cancelled - Exceeded Track Limits - Turn 11
15.56.28	66 N. TUULI	Crashed - Turn 4
15.56.47	83 L. EPIS	Lap Cancelled (1'46.164) - Exceeded Track Limits - Turn 11
15.56.56	66 N. TUULI	Re-joined
15.58.21	38 H. SOOMER	Lap Cancelled - Exceeded Track Limits - Turn 11
15.58.58	74 J. VAN SIKKELERUS	Lap Cancelled (1'42.189) - Exceeded Track Limits - Turn 16
16.04.31	4 G. REA	Lap Cancelled (1'40.976) - Exceeded Track Limits - Turn 16
16.04.38	77 K. RYDE	Lap Cancelled - Exceeded Track Limits - Turn 11
16.06.58	84 L. CRESSON	Crashed - Turn 15
16.07.14	63 Z. KHAIRUDDIN	Crashed - Turn 13
16.08.02	77 K. RYDE	Lap Cancelled - Exceeded Track Limits - Turn 11
16.08.33	83 L. EPIS	Lap Cancelled (1'42.027) - Exceeded Track Limits - Turn 16
16.10.47	84 L. CRESSON	Medical Centre
16.11.12	26 K. WATANABE	Lap Cancelled - Exceeded Track Limits - Turn 11
16.11.49	111 K. SMITH	Lap Cancelled - Exceeded Track Limits - Turn 11
16.12.29	64 F. CARICASULO	Crashed - Turn 4
16.13.03	64 F. CARICASULO	Re-joined
16.16.48	70 R. MULHAUSER	Crashed - Turn 14
16.16.53	35 S. HILL	Lap Cancelled - Exceeded Track Limits - Turn 11
16.17.01	70 R. MULHAUSER	Re-joined
16.17.19	5 A. BASSANI	Lap Cancelled - Exceeded Track Limits - Turn 11
16.18.37	92 H. KUNIKAWA	Lap Cancelled - Exceeded Track Limits - Turn 11
16.18.54	35 S. HILL	Lap Cancelled - Exceeded Track Limits - Turn 11
16.19.00	5 A. BASSANI	Lap Cancelled - Exceeded Track Limits - Turn 11
16.20.37	5 A. BASSANI	Lap Cancelled - Exceeded Track Limits - Turn 11
16.21.05	66 N. TUULI	Technical Problem - Turn 8
16.22.05	66 N. TUULI	Re-joined
16.22.10	92 H. KUNIKAWA	Lap Cancelled - Exceeded Track Limits - Turn 11
16.22.19	5 A. BASSANI	Lap Cancelled - Exceeded Track Limits - Turn 11
16.23.42	92 H. KUNIKAWA	Crashed - Turn 10
16.30.28	26 K. WATANABE	Lap Cancelled - Exceeded Track Limits - Turn 11
16.34.05	70 R. MULHAUSER	Lap Cancelled - Exceeded Track Limits - Turn 11
16.34.32	35 S. HILL	Crashed - Turn 4
16.35.42	16 J. CLUZEL	Lap Cancelled - Exceeded Track Limits - Turn 11
16.36.40	1 K. SOFUOGLU	Crashed - Turn 8
16.36.54	5 A. BASSANI	Lap Cancelled - Exceeded Track Limits - Turn 11
16.39.06	48 G. SCARCELLA	Stop - Technical Problem
16.40.21	5 A. BASSANI	Lap Cancelled - Exceeded Track Limits - Turn 11
16.41.15	70 R. MULHAUSER	Lap Cancelled - Exceeded Track Limits - Turn 11
16.43.01	70 R. MULHAUSER	Lap Cancelled - Exceeded Track Limits - Turn 11
16.44.04	111 K. SMITH	Crashed - Turn 2
16.44.14	83 L. EPIS	Crashed - Turn 4
16.44.25	74 J. VAN SIKKELERUS	Technical Problem - Turn 11
16.45.28	5 A. BASSANI	Lap Cancelled - Exceeded Track Limits - Turn 11
16.45.32	77 K. RYDE	Lap Cancelled - Exceeded Track Limits - Turn 11
16.46.06	26 K. WATANABE	Lap Cancelled - Exceeded Track Limits - Turn 6
16.46.12	38 H. SOOMER	Lap Cancelled - Exceeded Track Limits - Turn 11
16.46.51		End Of Session

Start	End	The results are provisional until the end of the time limit for protests and appeals and the completion of the technical checks.
16/06/2017	15:45 16:46	

These data/results cannot be reproduced, stored and/or transmitted in whole or in part by any manner of electronic, mechanical, photocopying, recording, broadcasting or otherwise now known or herein after developed without the previous express consent by the copyright owner, except for reproduction in daily press and regular printed publications on sale to the public within 60 days of the event related to those data/results and always provided that copyright symbol appears together as follows below.

© DORNA WSBK ORGANIZATION Srl 2017



## Riviera di Rimini Round, 16-17-18 June 2017

### World Supersport - Results Free Practice 2nd Session

Misano Circuit Sic 58 4.226 m

3 / 3

#### Fastest Laps Sequence

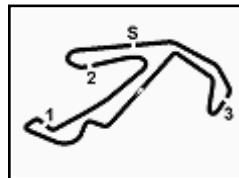
No.	Rider	Nat	Team	Bike	Local Time	Time	Gap	Avg
64	F. CARICASULO	ITA	GRT Yamaha Official WorldSSP Team	Yamaha YZF R6	15:48'35.488	<b>1'41.442</b>		149,973
11	C. GAMARINO	ITA	BARDAHL EVAN BROS. Honda Racing	Honda CBR600RR	15:48'55.725	<b>1'41.343</b>	-0.099	150,120
99	P. JACOBSEN	USA	MV Agusta Reparto Corse	MV Agusta F3 675	15:48'59.202	<b>1'40.808</b>	-0.535	150,917
99	P. JACOBSEN	USA	MV Agusta Reparto Corse	MV Agusta F3 675	15:50'39.368	<b>1'40.166</b>	-0.642	151,884
144	L. MAHIAS	FRA	GRT Yamaha Official WorldSSP Team	Yamaha YZF R6	15:51'49.884	<b>1'39.788</b>	-0.378	152,459
144	L. MAHIAS	FRA	GRT Yamaha Official WorldSSP Team	Yamaha YZF R6	16:04'10.317	<b>1'39.524</b>	-0.264	152,864
1	K. SOFUOGLU	TUR	Kawasaki Puccetti Racing	Kawasaki ZX-6R	16:17'25.066	<b>1'39.304</b>	-0.220	153,202
1	K. SOFUOGLU	TUR	Kawasaki Puccetti Racing	Kawasaki ZX-6R	16:19'04.168	<b>1'39.102</b>	-0.202	153,515

16/06/2017      Start      End      The results are provisional until the end of the time limit for protests and appeals  
 15:45      16:46      and the completion of the technical checks.

These data/results cannot be reproduced, stored and/or transmitted in whole or in part by any manner of electronic, mechanical, photocopying, recording, broadcasting or otherwise now known or herein after developed without the previous express consent by the copyright owner, except for reproduction in daily press and regular printed publications on sale to the public within 60 days of the event related to those data/results and always provided that copyright symbol appears together as follows below.

© DORNA WSBK ORGANIZATION Srl 2017





## Riviera di Rimini Round, 16-17-18 June 2017

### World Supersport - Ideal Times Free Practice 2nd Session

Misano Circuit Sic 58 4.226 m  
1 / 2

No.	Rider	Nat	Bike	Seg. 1	Seg. 2	Seg. 3	Seg. 4	Seg. 5	Ideal Time		
				Diff. 1	Diff. 2	Diff. 3	Diff. 4	Diff. 5	Best Lap	Pos.	Diff.
1	1 K. SOFUOGLU	TUR	Kawasaki ZX-6R	26.817 0.102	22.637	14.218	12.930 0.033	22.328 0.037	1'38.930 1'39.102	2	0.172
2	99 P. JACOBSEN	USA	MV Agusta F3 675	26.997	22.588	14.217 0.087	13.042 0.026	22.350	1'39.194 1'39.307	4	0.113
3	16 J. CLUZEL	FRA	Honda CBR600RR	26.995 0.039	22.626	14.245 0.034	12.974	22.367 0.033	1'39.207 1'39.313	5	0.106
4	4 G. REA	GBR	Kawasaki ZX-6R	26.914	22.710	14.251	13.042	22.341	1'39.258 1'39.258	3	
5	64 F. CARICASULO	ITA	Yamaha YZF R6	26.952 0.028	22.788 0.059	14.196	13.070 0.109	22.289 0.030	1'39.295 1'39.521	9	0.226
6	144 L. MAHIAS	FRA	Yamaha YZF R6	26.825	22.811 0.180	14.207	13.089	22.412	1'39.344 1'39.524	10	0.180
7	11 C. GAMARINO	ITA	Honda CBR600RR	26.873	22.795	14.190	13.108 0.017	22.402 0.018	1'39.368 1'39.403	6	0.035
8	81 L. STAPLEFORD	GBR	Triumph Daytona 675	26.939	22.662	14.210 0.044	13.207 0.020	22.383	1'39.401 1'39.465	7	0.064
9	111 K. SMITH	GBR	Honda CBR600RR	27.148 0.119	22.763	14.200	12.956	22.350 0.218	1'39.417 1'39.754	13	0.337
10	5 A. BASSANI	ITA	Kawasaki ZX-6R	27.079	22.786	14.098 0.041	13.033 0.040	22.430	1'39.426 1'39.507	8	0.081
11	13 A. WEST	AUS	Yamaha YZF R6	26.960 0.021	22.857 0.023	14.220 0.061	13.074	22.328	1'39.439 1'39.544	11	0.105
12	78 H. OKUBO	JPN	Honda CBR600RR	26.993	22.888	14.186	13.032 0.002	22.416 0.157	1'39.515 1'39.674	12	0.159
13	163 D. STIRPE	ITA	MV Agusta F3 675	26.927	22.900 0.004	14.365 0.049	13.044 0.110	22.359	1'39.595 1'39.758	14	0.163
14	32 S. MORAIS	RSA	Yamaha YZF R6	27.089	22.847	14.266 0.068	13.002 0.076	22.524	1'39.728 1'39.872	15	0.144
15	61 A. ZACCONE	ITA	MV Agusta F3 675	27.018 0.159	22.812	14.403 0.031	13.201 0.026	22.382	1'39.816 1'40.032	16	0.216
16	38 H. SOOMER	EST	Honda CBR600RR	27.103 0.155	22.926 0.046	14.386 0.044	12.982 0.105	22.586 0.086	1'39.983 1'40.419	18	0.436
17	47 R. HARTOG	NED	Kawasaki ZX-6R	27.077	22.894 0.062	14.345 0.005	13.234 0.011	22.498 0.025	1'40.048 1'40.151	17	0.103
18	26 K. WATANABE	JPN	Kawasaki ZX-6R	27.220 0.186	23.034 0.026	14.345	13.169	22.529	1'40.297 1'40.509	19	0.212
19	10 N. CALERO	ESP	Kawasaki ZX-6R	27.014 0.281	23.148 0.098	14.326	13.382 0.059	22.485	1'40.355 1'40.793	23	0.438
20	44 R. ROLFO	ITA	MV Agusta F3 675	27.327 0.114	23.032 0.060	14.492 0.032	13.137 0.131	22.466	1'40.454 1'40.791	22	0.337
21	63 Z. KHAIRUDDIN	MAS	Kawasaki ZX-6R	27.150	22.997 0.012	14.382 0.027	13.575 0.013	22.422 0.105	1'40.526 1'40.683	20	0.157
22	70 R. MULHAUSER	SUI	Honda CBR600RR	27.390 0.157	22.859 0.074	14.547 0.063	13.142 0.118	22.589 0.065	1'40.527 1'41.004	26	0.477
23	84 L. CRESSON	BEL	Yamaha YZF R6	27.527 0.243	22.940 0.054	14.345 0.020	13.163 0.027	22.622	1'40.597 1'40.941	25	0.344
24	66 N. TUULI	FIN	Yamaha YZF R6	27.401 0.063	22.969	14.540 0.085	13.150 0.115	22.631 0.053	1'40.691 1'41.007	27	0.316
25	56 P. SEBESTYÉN	HUN	Kawasaki ZX-6R	27.164	23.133 0.010	14.454 0.002	13.318	22.667 0.032	1'40.736 1'40.780	21	0.044
26	74 J. VAN SIKKELERUS	NED	Yamaha YZF R6	27.304	23.068	14.447 0.022	13.330 0.041	22.691	1'40.840 1'40.903	24	0.063
27	83 L. EPIS	AUS	Kawasaki ZX-6R	27.438 0.011	23.141 0.284	14.425	13.172 0.181	22.715 0.028	1'40.891 1'41.395	29	0.504
28	77 K. RYDE	GBR	Kawasaki ZX-6R	27.334 0.169	23.412	14.352 0.053	13.009 0.086	22.911 0.001	1'41.018 1'41.327	28	0.309
29	82 L. CIPICIANI	ITA	Honda CBR600RR	27.459	23.321 0.100	14.492 0.030	13.381	22.653 0.004	1'41.306 1'41.440	30	0.134
30	73 J. CRETARO	ITA	Suzuki GSX-R600	27.757	23.078	14.506	13.641	22.815 0.111	1'41.797 1'41.908	32	0.111
31	35 S. HILL	GBR	Triumph Daytona 675	27.640	23.361	14.510	13.365	22.932	1'41.808 1'41.808	31	
32	92 H. KUNIKAWA	JPN	Honda CBR600RR	27.998 0.027	23.465 0.229	14.523 0.023	13.486 0.159	23.079 0.210	1'42.551 1'43.199	34	0.648
33	9 C. LONDON	NZL	Suzuki GSX-R600	28.176	23.462 0.049	14.655	13.656 0.040	22.985	1'42.934 1'43.023	33	0.089

16/06/2017

These data/results cannot be reproduced, stored and/or transmitted in whole or in part by any manner of electronic, mechanical, photocopying, recording, broadcasting or otherwise now known or herein after developed without the previous express consent by the copyright owner, except for reproduction in daily press and regular printed publications on sale to the public within 60 days of the event related to those data/results and always provided that copyright symbol appears together as follows below.

© DORNA WSBK ORGANIZATION Srl 2017

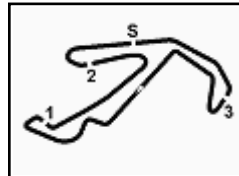
FICR PERUGIA TIMING



Official Tyre Supplier



Official Timekeeper



## Riviera di Rimini Round, 16-17-18 June 2017

### World Supersport - Ideal Times Free Practice 2nd Session

Misano Circuit Sic 58 4.226 m  
2 / 2

No.	Rider	Nat	Bike	Seg. 1	Seg. 2	Seg. 3	Seg. 4	Seg. 5	Ideal Time		
				Diff. 1	Diff. 2	Diff. 3	Diff. 4	Diff. 5	Best Lap	Pos.	Diff.
34	48 G. SCARCELLA	AUS	Honda CBR600RR	28.284 0.076	23.476	14.702	13.926	23.286	1'43.674	35	0.076
<b>Overall Ideal Time</b>				26.817	22.588	14.098	12.930	22.289	<b>1'38.722</b>		

16/06/2017  
 These data/results cannot be reproduced, stored and/or transmitted in whole or in part by any manner of electronic, mechanical, photocopying, recording, broadcasting or otherwise now known or herein after developed without the previous express consent by the copyright owner, except for reproduction in daily press and regular printed publications on sale to the public within 60 days of the event related to those data/results and always provided that copyright symbol appears together as follows below.  
 © DORNA WSBK ORGANIZATION Srl 2017



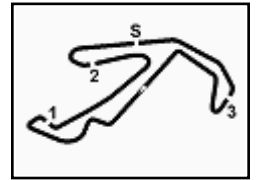












### Riviera di Rimini Round, 16-17-18 June 2017

### World Supersport - Chronological Analysis Free Practice 2nd Session

Misano Circuit Sic 58.4.226 m

5 / 5

20	27.365	23.425	14.392	13.543	23.474	1'42.199	<b>229.3</b>	16:44'16.661
21	27.602	23.444	<b>14.352</b>	13.254	22.953	1'41.605 C	<b>232.8</b>	16:45'58.266

28° 83 L. EPIS (1'41.395)								
Lap	Seg. 1	Seg. 2	Seg. 3	Seg. 4	Seg. 5	Lap Time	km/h	Local Time
1	28.335	23.664	14.784	13.374	23.483	1'43.640	<b>226.4</b>	15:49'10.541
2	28.096	23.783	14.616	13.382	23.380	1'43.257	<b>225.0</b>	15:50'53.798
3	27.770	23.458	14.539	13.936	23.545	1'43.248	<b>225.9</b>	15:52'37.046
4	27.650	23.353	14.653	13.295	23.113	1'42.064	<b>225.9</b>	15:54'19.110
5	28.422	24.026	14.697	13.996	25.023	1'46.164 C	<b>224.5</b>	15:56'05.274
6	28.519	24.056	14.615	13.417	29.749	1'50.356 P	<b>225.9</b>	15:57'55.630
7	5'07.262	24.444	15.548	13.754	24.146	6'25.154 P	<b>218.6</b>	16:04'20.784
8	29.066	23.957	14.977	14.139	23.407	1'45.546	<b>221.3</b>	16:06'06.330
9	27.621	23.278	14.557	13.441	23.130	1'42.027 C	<b>224.1</b>	16:07'48.357
10	27.661	23.304	14.441	13.397	22.918	1'41.721	<b>225.0</b>	16:09'30.078
11	27.691	23.860	15.134	14.496	24.080	1'45.261	<b>221.3</b>	16:11'15.339
12	27.500	<b>23.141</b>	14.448	13.289	23.076	1'41.454	<b>225.0</b>	16:12'56.793
13	28.837	24.214	14.716	13.875	28.453	1'50.095 P	<b>225.5</b>	16:14'46.888
14	7'36.672	26.195	18.921	15.525	33.409	9'10.722 P	<b>195.3</b>	16:23'57.610
15	27.924	24.681	14.655	13.283	22.879	1'43.422	<b>225.5</b>	16:25'41.032
16	28.298			13.296	<b>22.715</b>	1'42.450	<b>226.4</b>	16:27'23.482
17	<b>27.438</b>	23.380	14.940	<b>13.172</b>	22.776	1'41.706	<b>229.3</b>	16:29'05.188
18	29.104	27.865	16.434	18.605	28.852	2'00.860 P	<b>189.5</b>	16:31'06.048
19	27.681	23.554	14.903	13.793	29.798	1'49.729 P	<b>224.1</b>	16:32'55.777
20	5'39.100	28.980	18.974	14.632	23.771	7'05.457 P	<b>184.0</b>	16:40'01.234
21	29.264	29.506	16.093	13.675	22.824	1'51.362	<b>218.6</b>	16:41'52.956
22	27.449	23.425	<b>14.025</b>	13.353	22.743	1'41.395	<b>225.0</b>	16:43'33.991

29° 82 L. CIPICIANI (1'41.440)								
Lap	Seg. 1	Seg. 2	Seg. 3	Seg. 4	Seg. 5	Lap Time	km/h	Local Time
1	1'15.407	26.364	15.666	15.455	25.802	2'38.694 P	<b>205.3</b>	15:45'14.420
2	29.924	25.184	15.414	14.704	23.817	1'49.043	<b>207.3</b>	15:47'53.114
3	30.141	24.471	14.994	15.014	2'17.196	3'41.816 P	<b>215.1</b>	15:53'23.973
4	1'14.826	25.226	15.895	14.584	24.763	2'35.294 P	<b>213.0</b>	15:55'59.267
5	28.242	23.943	14.531	14.009	24.057	1'44.782	<b>227.4</b>	15:57'44.049
6	28.041	25.119	14.792	13.513	23.225	1'44.690	<b>225.5</b>	15:59'28.739
7	27.995	23.536	14.569	13.542	23.425	1'43.067	<b>226.4</b>	16:01'11.806
8	27.950	23.708	14.638	13.597	23.033	1'42.926	<b>225.5</b>	16:02'54.732
9	28.563	23.948	14.849	13.961	13'06.634	14'27.955 P	<b>222.7</b>	16:17'22.687
10	1'18.788	28.246	15.060	13.967	23.422	2'39.483 P	<b>223.6</b>	16:20'02.170
11	28.151	24.705	15.090	13.700	23.090	1'44.736	<b>222.7</b>	16:21'46.906
12	28.037	24.007	14.716	13.530	23.051	1'43.341	<b>226.4</b>	16:23'30.247
13	29.110	26.037	15.043	13.578	23.080	1'46.848	<b>224.5</b>	16:25'17.095
14	28.089	23.962	14.698	13.510	22.946	1'43.205	<b>225.9</b>	16:27'00.300
15	27.771	23.472	14.586	13.672	23.132	1'42.633	<b>226.4</b>	16:28'42.933
16	31.658	25.587	15.641	14.396	5'14.334	6'41.616 P	<b>217.3</b>	16:35'24.549
17	1'20.002	24.494	14.807	13.788	23.135	2'36.226 P	<b>226.9</b>	16:38'00.775
18	27.807	23.620	14.731	13.507	<b>22.663</b>	1'42.318	<b>225.9</b>	16:39'43.093
19	27.939	23.967	<b>14.492</b>	13.394	23.284	1'43.076	<b>231.8</b>	16:41'26.169
20	27.784	23.860	14.510	13.521	23.468	1'43.143	<b>228.8</b>	16:43'09.312
21	<b>27.459</b>	23.421	14.522	<b>13.381</b>	22.657	1'41.440	<b>231.3</b>	16:44'50.752
22	27.853	<b>23.321</b>	15.220	13.691	23.161	1'43.246	<b>229.3</b>	16:46'33.998

30° 35 S. HILL (1'41.808)								
Lap	Seg. 1	Seg. 2	Seg. 3	Seg. 4	Seg. 5	Lap Time	km/h	Local Time
1	34.286	24.349	15.147	13.914	23.613		<b>218.6</b>	15:48'50.771
2	28.231	30.730	15.118	14.019	26.050	2'00.203	<b>222.7</b>	15:50'50.974
3	28.055	24.012	14.705	14.014	23.787	1'44.749	<b>228.3</b>	15:52'35.723
4	28.055	23.716	14.694	13.603	23.162	1'43.230	<b>224.5</b>	15:54'18.953
5	28.089	23.622	14.697	13.490	23.067	1'42.965	<b>225.0</b>	15:56'01.918
6	28.680	26.402	14.941	13.765	25.222	1'49.010	<b>223.1</b>	15:57'50.928
7	27.970	23.480	14.623	13.519	23.153	1'42.745	<b>225.0</b>	15:59'33.673
8	28.169	24.327	15.562	14.241	33.640	1'55.939 P	<b>219.1</b>	16:01'29.612
9	7'06.507	28.737	15.878	14.751	25.932	8'31.805 P	<b>218.6</b>	16:10'01.417
10	28.659	23.815	14.901	13.643	23.231	1'44.249	<b>222.2</b>	16:11'45.666
11	29.069	23.773	18.917	17.291	27.032	1'56.082		16:13'41.748
12	27.935	25.363	15.406	13.964	23.305	1'45.973	<b>216.0</b>	16:15'27.721
13	27.752	23.484	14.534	13.451	22.947	1'42.168 C	<b>226.4</b>	16:17'09.889
14	30.294	24.119	15.116	14.958	33.204	1'57.691 C	<b>219.5</b>	16:19'07.580
15	9'38.007	30.781	17.555	21.480	26.283	11'14.106 P	<b>139.2</b>	16:30'21.686
16	<b>27.640</b>	<b>23.361</b>	<b>14.510</b>	<b>13.365</b>	<b>22.932</b>	<b>1'41.808</b>	<b>226.9</b>	16:32'03.494
	33.313	24.148	14.919	13.603	24.905	1'50.888	<b>224.5</b>	16:33'54.382

31° 73 J. CRETARO (1'41.908)								
Lap	Seg. 1	Seg. 2	Seg. 3	Seg. 4	Seg. 5	Lap Time	km/h	Local Time
1	57.878	25.385	15.155	14.721	23.490	2'16.629 P	<b>224.1</b>	15:45'09.375
								15:47'26.004

16/06/2017

P = Pits In/Out - C = Lap-Time Cancelled

These data/results cannot be reproduced, stored and/or transmitted in whole or in part by any manner of electronic, mechanical, photocopying, recording, broadcasting or otherwise now known or herein after developed without the previous express consent by the copyright owner, except for reproduction in daily press and regular printed publications on sale to the public within 60 days of the event related to those data/results and always provided that copyright symbol appears together as follows below.

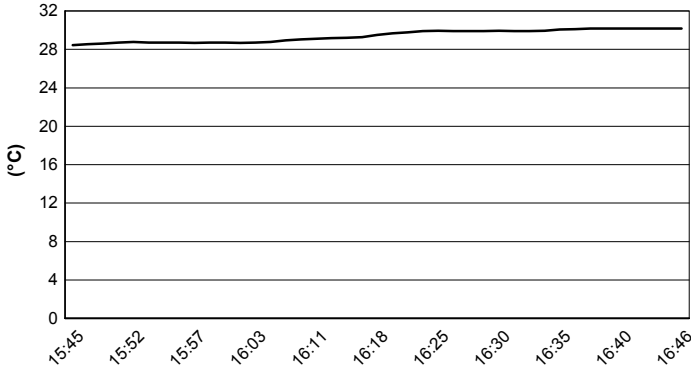
© DORNA WSBK ORGANIZATION Srl 2017

**Riviera di Rimini Round, 16-17-18 June 2017**  
**World Supersport - Weather Report Free Practice 2nd Session**

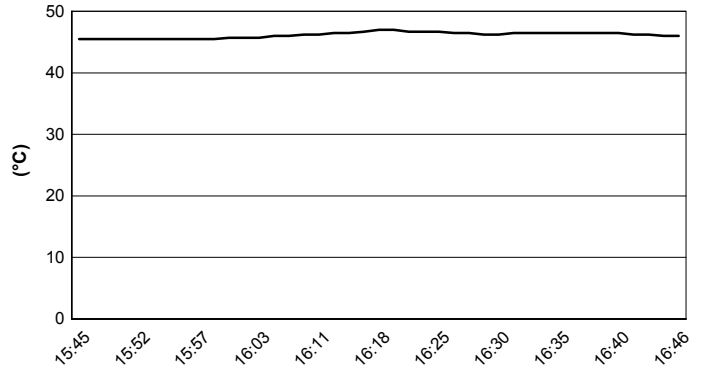
Misano Circuit Sic 58 4.226 m

Session started 15:45      Session ended 16:46

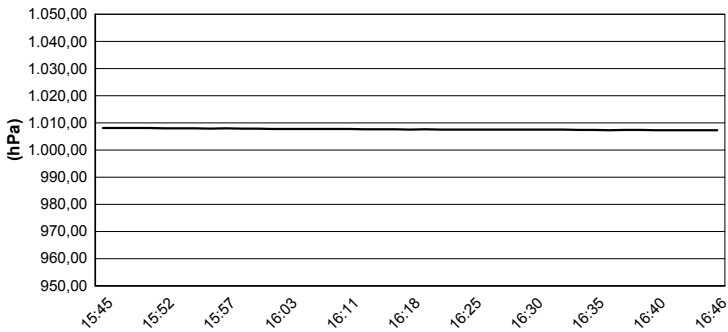
**Air Temperature**



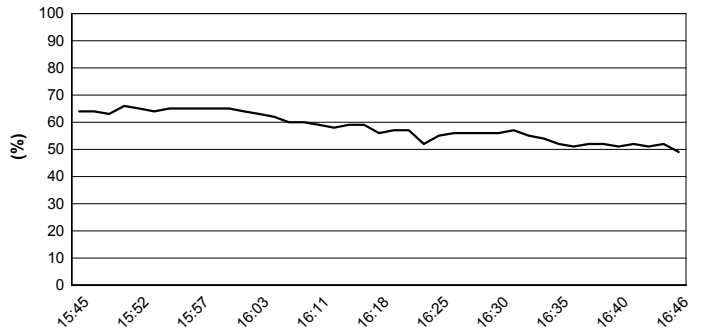
**Track Temperature**



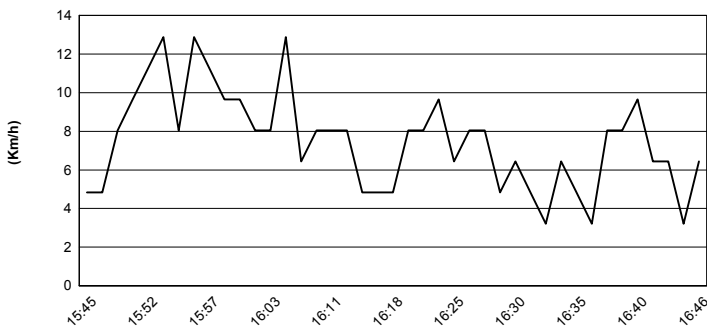
**Air Pressure**



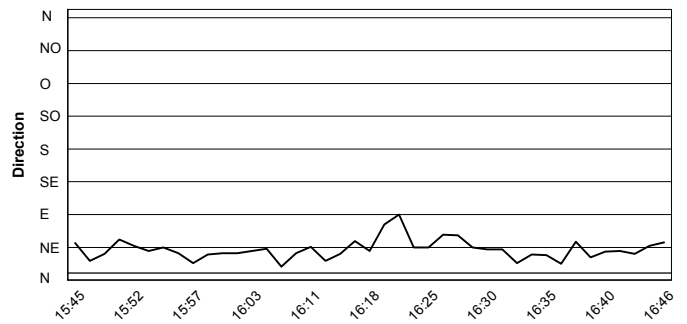
**Humidity**



**Wind Speed**



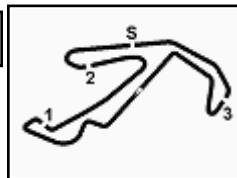
**Wind Direction**



16/06/2017

These data/results cannot be reproduced, stored and/or transmitted in whole or in part by any manner of electronic, mechanical, photocopying, recording, broadcasting or otherwise now known or herein after developed without the previous express consent by the copyright owner, except for reproduction in daily press and regular printed publications on sale to the public within 60 days of the event related to those data/results and always provided that copyright symbol appears together as follows below.

© DORNA WSBK ORGANIZATION Srl 2017



## Riviera di Rimini Round, 16-17-18 June 2017

### World Supersport - Superpole 1-2 Entry List

#### Superpole 1

FPs Pos	No. Rider	Nat	Team	Bike	Time
11	<b>78 H. OKUBO</b>	JPN	CIA Landlord Insurance Honda	Honda CBR600RR	<b>1'39.674</b>
12	<b>111 K. SMITH</b>	GBR	GEMAR Team Lorini	Honda CBR600RR	<b>1'39.754</b>
13	<b>163 D. STIRPE</b>	ITA	Team Factory Vamag	MV Agusta F3 675	<b>1'39.758</b>
14	<b>32 S. MORAIS</b>	RSA	Kallio Racing	Yamaha YZF R6	<b>1'39.872</b>
15	<b>61 A. ZACCONE</b>	ITA	MV Agusta Reparto Corse	MV Agusta F3 675	<b>1'40.032</b>
16	<b>47 R. HARTOG</b>	NED	Team Hartog - Jenik - Against Cancer	Kawasaki ZX-6R	<b>1'40.151</b>
17	<b>63 Z. KHAIRUDDIN</b>	MAS	Orelac Racing VerdNatura	Kawasaki ZX-6R	<b>1'40.353</b>
18	<b>84 L. CRESSON</b>	BEL	Race Department ATK#25	Yamaha YZF R6	<b>1'40.358</b>
19	<b>38 H. SOOMER</b>	EST	WILSport Racedays	Honda CBR600RR	<b>1'40.419</b>
20	<b>26 K. WATANABE</b>	JPN	Team Kawasaki Go Eleven	Kawasaki ZX-6R	<b>1'40.509</b>
21	<b>44 R. ROLFO</b>	ITA	Team Factory Vamag	MV Agusta F3 675	<b>1'40.741</b>
22	<b>56 P. SEBESTYÉN</b>	HUN	SSP Hungary by Pedercini Racing	Kawasaki ZX-6R	<b>1'40.780</b>
23	<b>10 N. CALERO</b>	ESP	Orelac Racing VerdNatura	Kawasaki ZX-6R	<b>1'40.793</b>
24	<b>74 J. VAN SIKKELERUS</b>	NED	MVR Racing	Yamaha YZF R6	<b>1'40.903</b>
25	<b>70 R. MULHAUSER</b>	SUI	CIA Landlord Insurance Honda	Honda CBR600RR	<b>1'41.004</b>
26	<b>66 N. TUULI</b>	FIN	Kallio Racing	Yamaha YZF R6	<b>1'41.007</b>
27	<b>25 A. BALDOLINI</b>	ITA	Race Department ATK#25	MV Agusta F3 675	<b>1'41.118</b>
28	<b>77 K. RYDE</b>	GBR	Kawasaki Puccetti Racing	Kawasaki ZX-6R	<b>1'41.327</b>
29	<b>83 L. EPIS</b>	AUS	Response RE Racing	Kawasaki ZX-6R	<b>1'41.395</b>
30	<b>82 L. CIPICIANI</b>	ITA	Team VUEFFE Corse	Honda CBR600RR	<b>1'41.440</b>
31	<b>35 S. HILL</b>	GBR	Profile Racing	Triumph Daytona 675	<b>1'41.808</b>
32	<b>73 J. CRETARO</b>	ITA	Phoenix Suzuki Racing	Suzuki GSX-R600	<b>1'41.908</b>
33	<b>9 C. LONDON</b>	NZL	Phoenix Suzuki Racing	Suzuki GSX-R600	<b>1'43.023</b>
34	<b>92 H. KUNIKAWA</b>	JPN	CIA Landlord Insurance Honda	Honda CBR600RR	<b>1'43.199</b>
35	<b>48 G. SCARCELLA</b>	AUS	GEMAR Team Lorini	Honda CBR600RR	<b>1'43.750</b>

#### Superpole 2

FPs Pos	No. Rider	Nat	Team	Bike	Time
1	<b>1 K. SOFUOGLU</b>	TUR	Kawasaki Puccetti Racing	Kawasaki ZX-6R	<b>1'39.102</b>
2	<b>4 G. REA</b>	GBR	Team Kawasaki Go Eleven	Kawasaki ZX-6R	<b>1'39.258</b>
3	<b>99 P. JACOBSEN</b>	USA	MV Agusta Reparto Corse	MV Agusta F3 675	<b>1'39.307</b>
4	<b>16 J. CLUZEL</b>	FRA	CIA Landlord Insurance Honda	Honda CBR600RR	<b>1'39.313</b>
5	<b>64 F. CARICASULO</b>	ITA	GRT Yamaha Official WorldSSP Team	Yamaha YZF R6	<b>1'39.376</b>
6	<b>11 C. GAMARINO</b>	ITA	BARDAHL EVAN BROS. Honda Racing	Honda CBR600RR	<b>1'39.403</b>
7	<b>81 L. STAPLEFORD</b>	GBR	Profile Racing	Triumph Daytona 675	<b>1'39.465</b>
8	<b>5 A. BASSANI</b>	ITA	3570 Puccetti Racing FMI	Kawasaki ZX-6R	<b>1'39.507</b>
9	<b>144 L. MAHIAS</b>	FRA	GRT Yamaha Official WorldSSP Team	Yamaha YZF R6	<b>1'39.524</b>
10	<b>13 A. WEST</b>	AUS	EAB West Racing	Yamaha YZF R6	<b>1'39.544</b>
*					
*					

\* These positions are assigned to the 1st and 2nd rider classified in Superpole 1

16/06/2017 1!

These data/results cannot be reproduced, stored and/or transmitted in whole or in part by any manner of electronic, mechanical, photocopying, recording, broadcasting or otherwise now known or herein after developed without the previous express consent by the copyright owner, except for reproduction in daily press and regular printed publications on sale to the public within 60 days of the event related to those data/results and always provided that copyright symbol appears together as follows below.

© DORNA WSBK ORGANIZATION Srl 2017

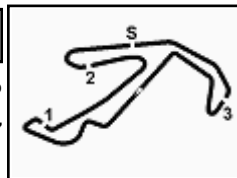
FICR PERUGIA TIMING



Official Tyre Supplier



Official Timekeeper



## Riviera di Rimini Round, 16-17-18 June 2017

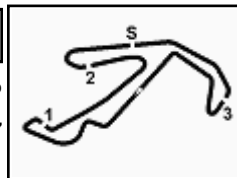
### World Supersport - Best Laps & Speeds

No.	Rider		Best Lap	FP1		FP2	
	Nat	Bike		laps	speed	laps	speed
1	1	K. SOFUOGLU	1'39.102	1'40.665	1'39.102		
	TUR	Kawasaki ZX-6R	28 232,7	4 229,3	24 232,7		
2	4	G. REA	1'39.258	1'40.250	1'39.258		
	GBR	Kawasaki ZX-6R	51 231,7	24 231,2	27 231,7		
3	99	P. JACOBSEN	1'39.307	1'39.815	1'39.307		
	USA	MV Agusta F3 675	36 232,2	17 232,2	19 230,7		
4	16	J. CLUZEL	1'39.313	1'39.552	1'39.313		
	FRA	Honda CBR600RR	46 232,7	23 232,7	23 230,7		
5	64	F. CARICASULO	1'39.376	1'39.376	1'39.521		
	ITA	Yamaha YZF R6	38 236,3	20 236,3	18 236,3		
6	11	C. GAMARINO	1'39.403	1'40.122	1'39.403		
	ITA	Honda CBR600RR	35 233,2	18 233,2	17 231,2		
7	81	L. STAPLEFORD	1'39.465	1'40.190	1'39.465		
	GBR	Triumph Daytona 675	43 234,2	23 234,2	20 232,7		
8	5	A. BASSANI	1'39.507	1'41.312	1'39.507		
	ITA	Kawasaki ZX-6R	43 233,7	20 233,2	23 233,7		
9	144	L. MAHIAS	1'39.524	1'39.543	1'39.524		
	FRA	Yamaha YZF R6	39 234,2	18 234,2	21 230,2		
10	13	A. WEST	1'39.544	1'40.437	1'39.544		
	AUS	Yamaha YZF R6	49 234,7	24 234,7	25 231,7		
11	78	H. OKUBO	1'39.674	1'40.368	1'39.674		
	JPN	Honda CBR600RR	42 232,7	23 232,2	19 232,7		
12	111	K. SMITH	1'39.754	1'41.149	1'39.754		
	GBR	Honda CBR600RR	28 231,7	12 231,7	16 231,2		
13	163	D. STIRPE	1'39.758	1'40.416	1'39.758		
	ITA	MV Agusta F3 675	39 228,8	21 228,8	18 227,8		
14	32	S. MORAIS	1'39.872	1'40.368	1'39.872		
	RSA	Yamaha YZF R6	45 232,7	24 232,2	21 232,7		
15	61	A. ZACCONE	1'40.032	1'40.372	1'40.032		
	ITA	MV Agusta F3 675	41 229,3	19 229,3	22 228,8		
16	47	R. HARTOG	1'40.151	1'40.971	1'40.151		
	NED	Kawasaki ZX-6R	46 232,2	24 232,2	22 231,7		
17	63	Z. KHAIRUDDIN	1'40.353	1'40.353	1'40.683		
	MAS	Kawasaki ZX-6R	28 230,7	21 230,7	7 228,3		
18	84	L. CRESSON	1'40.358	1'40.358	1'40.941		
	BEL	Yamaha YZF R6	24 235,2	18 235,2	6 233,7		
19	38	H. SOOMER	1'40.419	1'41.003	1'40.419		
	EST	Honda CBR600RR	51 232,2	25 232,2	26 229,7		
20	26	K. WATANABE	1'40.509	1'42.074	1'40.509		
	JPN	Kawasaki ZX-6R	47 231,2	25 231,2	22 231,2		

16/06/2017

These data/results cannot be reproduced, stored and/or transmitted in whole or in part by any manner of electronic, mechanical, photocopying, recording, broadcasting or otherwise now known or herein after developed without the previous express consent by the copyright owner, except for reproduction in daily press and regular printed publications on sale to the public within 60 days of the event related to those data/results and always provided that copyright symbol appears together as follows below.

© DORNA WSBK ORGANIZATION Srl 2017



## Riviera di Rimini Round, 16-17-18 June 2017

### World Supersport - Best Laps & Speeds

No.	Rider		Best Lap	FP1		FP2	
	Nat	Bike		laps	speed	laps	speed
21	<b>44 R. ROLFO</b>		<b>1'40.741</b>	<b>1'40.741</b>		1'40.791	
	ITA	MV Agusta F3 675	39 231,7	20 229,3	19	<b>231,7</b>	
22	<b>56 P. SEBESTYÉN</b>		<b>1'40.780</b>	1'41.835	<b>1'40.780</b>		
	HUN	Kawasaki ZX-6R	37 230,2	21 <b>230,2</b>	16	227,3	
23	<b>10 N. CALERO</b>		<b>1'40.793</b>	1'41.603	<b>1'40.793</b>		
	ESP	Kawasaki ZX-6R	41 230,2	21 <b>230,2</b>	20	<b>230,2</b>	
24	<b>74 J. VAN SIKKELERUS</b>		<b>1'40.903</b>	1'41.957	<b>1'40.903</b>		
	NED	Yamaha YZF R6	51 229,7	26 228,8	25	<b>229,7</b>	
25	<b>70 R. MULHAUSER</b>		<b>1'41.004</b>	1'41.297	<b>1'41.004</b>		
	SUI	Honda CBR600RR	33 229,7	16 229,3	17	<b>229,7</b>	
26	<b>66 N. TUULI</b>		<b>1'41.007</b>	1'41.254	<b>1'41.007</b>		
	FIN	Yamaha YZF R6	28 232,7	11 <b>232,7</b>	17	230,2	
27	<b>25 A. BALDOLINI</b>		<b>1'41.118</b>	<b>1'41.118</b>			
	ITA	MV Agusta F3 675	16 232,2	16 <b>232,2</b>			
28	<b>77 K. RYDE</b>		<b>1'41.327</b>	1'41.722	<b>1'41.327</b>		
	GBR	Kawasaki ZX-6R	43 232,7	22 232,2	21	<b>232,7</b>	
29	<b>83 L. EPIS</b>		<b>1'41.395</b>	1'41.768	<b>1'41.395</b>		
	AUS	Kawasaki ZX-6R	44 229,3	22 <b>229,3</b>	22	<b>229,3</b>	
30	<b>82 L. CIPICIANI</b>		<b>1'41.440</b>	1'49.830	<b>1'41.440</b>		
	ITA	Honda CBR600RR	29 231,7	7 206,5	22	<b>231,7</b>	
31	<b>35 S. HILL</b>		<b>1'41.808</b>	1'42.885	<b>1'41.808</b>		
	GBR	Triumph Daytona 675	36 228,8	20 <b>228,8</b>	16	228,3	
32	<b>73 J. CRETARO</b>		<b>1'41.908</b>		<b>1'41.908</b>		
	ITA	Suzuki GSX-R600	19 230,7		19	<b>230,7</b>	
33	<b>9 C. LONDON</b>		<b>1'43.023</b>	1'44.599	<b>1'43.023</b>		
	NZL	Suzuki GSX-R600	40 226,4	19 220,8	21	<b>226,4</b>	
34	<b>92 H. KUNIKAWA</b>		<b>1'43.199</b>	1'44.004	<b>1'43.199</b>		
	JPN	Honda CBR600RR	27 230,2	16 <b>230,2</b>	11	229,3	
35	<b>48 G. SCARCELLA</b>		<b>1'43.750</b>	1'43.835	<b>1'43.750</b>		
	AUS	Honda CBR600RR	25 225,0	20 <b>225,0</b>	5	223,1	

16/06/2017

These data/results cannot be reproduced, stored and/or transmitted in whole or in part by any manner of electronic, mechanical, photocopying, recording, broadcasting or otherwise now known or herein after developed without the previous express consent by the copyright owner, except for reproduction in daily press and regular printed publications on sale to the public within 60 days of the event related to those data/results and always provided that copyright symbol appears together as follows below.

© DORNA WSBK ORGANIZATION Srl 2017

FICR PERUGIA TIMING



Official Tyre Supplier



Official Timekeeper