



## Dutch Round, 28-29-30 April 2017

### World Supersport - Results Warm Up

| No.                                  | Rider                | Nat | Team                                 | Bike                | Class | Time            | Gap   | Rel.  | Laps | Speed   |              |
|--------------------------------------|----------------------|-----|--------------------------------------|---------------------|-------|-----------------|-------|-------|------|---------|--------------|
|                                      |                      |     |                                      |                     |       |                 |       |       |      | Avg     | Max          |
| 1                                    | 1 K. SOFUOGLU        | TUR | Kawasaki Puccetti Racing             | Kawasaki ZX-6R      |       | <b>1'39.128</b> |       |       | 6    | 164,950 | <b>249,0</b> |
| 2                                    | 144 L. MAHIAS        | FRA | GRT Yamaha Official WorldSSP Team    | Yamaha YZF R6       |       | <b>1'39.354</b> | 0.226 | 0.226 | 8    | 164,575 | <b>250,5</b> |
| 3                                    | 32 S. MORAIS         | RSA | Kallio Racing                        | Yamaha YZF R6       |       | <b>1'39.811</b> | 0.683 | 0.457 | 8    | 163,822 | <b>254,6</b> |
| 4                                    | 111 K. SMITH         | GBR | GEMAR Team Lorini                    | Honda CBR600RR      |       | <b>1'39.905</b> | 0.777 | 0.094 | 7    | 163,667 | <b>249,9</b> |
| 5                                    | 77 K. RYDE           | GBR | Kawasaki Puccetti Racing             | Kawasaki ZX-6R      |       | <b>1'40.001</b> | 0.873 | 0.096 | 8    | 163,510 | <b>252,5</b> |
| 6                                    | 99 P. JACOBSEN       | USA | MV Agusta Reparto Corse              | MV Agusta F3 675    |       | <b>1'40.027</b> | 0.899 | 0.026 | 8    | 163,468 | <b>248,2</b> |
| 7                                    | 11 C. GAMARINO       | ITA | BARDAHL EVAN BROS. Honda Racing      | Honda CBR600RR      |       | <b>1'40.109</b> | 0.981 | 0.082 | 8    | 163,334 | <b>247,9</b> |
| 8                                    | 16 J. CLUZEL         | FRA | CIA Landlord Insurance Honda         | Honda CBR600RR      |       | <b>1'40.171</b> | 1.043 | 0.062 | 8    | 163,233 | <b>251,4</b> |
| 9                                    | 64 F. CARICASULO     | ITA | GRT Yamaha Official WorldSSP Team    | Yamaha YZF R6       |       | <b>1'40.222</b> | 1.094 | 0.051 | 8    | 163,150 | <b>249,3</b> |
| 10                                   | 38 H. SOOMER         | EST | WILSport Racedays                    | Honda CBR600RR      | ESS   | <b>1'40.556</b> | 1.428 | 0.334 | 8    | 162,608 | <b>251,1</b> |
| 11                                   | 81 L. STAPLEFORD     | GBR | Profile Racing                       | Triumph Daytona 675 |       | <b>1'40.742</b> | 1.614 | 0.186 | 5    | 162,308 | <b>245,4</b> |
| 12                                   | 44 R. ROLFO          | ITA | Team Factory Vamag                   | MV Agusta F3 675    |       | <b>1'40.817</b> | 1.689 | 0.075 | 7    | 162,187 | <b>245,1</b> |
| 13                                   | 66 N. TUULI          | FIN | Kallio Racing                        | Yamaha YZF R6       |       | <b>1'40.838</b> | 1.710 | 0.021 | 8    | 162,153 | <b>254,9</b> |
| 14                                   | 47 R. HARTOG         | NED | Team Hartog - Jenik - Against Cancer | Kawasaki ZX-6R      | ESS   | <b>1'40.868</b> | 1.740 | 0.030 | 8    | 162,105 | <b>247,9</b> |
| 15                                   | 65 M. CANDUCCI       | ITA | 3570 Puccetti Racing FMI             | Kawasaki ZX-6R      |       | <b>1'40.909</b> | 1.781 | 0.041 | 8    | 162,039 | <b>248,2</b> |
| 16                                   | 63 Z. KHAIRUDDIN     | MAS | Orelac Racing VerdNatura             | Kawasaki ZX-6R      |       | <b>1'41.100</b> | 1.972 | 0.191 | 8    | 161,733 | <b>251,4</b> |
| 17                                   | 13 A. WEST           | AUS | EAB West Racing                      | Yamaha YZF R6       |       | <b>1'41.124</b> | 1.996 | 0.024 | 8    | 161,695 | <b>244,2</b> |
| 18                                   | 70 R. MULHAUSER      | SUI | CIA Landlord Insurance Honda         | Honda CBR600RR      |       | <b>1'41.187</b> | 2.059 | 0.063 | 8    | 161,594 | <b>248,5</b> |
| 19                                   | 26 K. WATANABE       | JPN | Team Kawasaki Go Eleven              | Kawasaki ZX-6R      |       | <b>1'41.379</b> | 2.251 | 0.192 | 8    | 161,288 | <b>247,0</b> |
| 20                                   | 4 G. REA             | GBR | Team Kawasaki Go Eleven              | Kawasaki ZX-6R      |       | <b>1'41.505</b> | 2.377 | 0.126 | 8    | 161,088 | <b>246,5</b> |
| 21                                   | 10 N. CALERO         | ESP | Orelac Racing VerdNatura             | Kawasaki ZX-6R      |       | <b>1'41.548</b> | 2.420 | 0.043 | 8    | 161,019 | <b>249,6</b> |
| 22                                   | 78 H. OKUBO          | JPN | CIA Landlord Insurance Honda         | Honda CBR600RR      |       | <b>1'41.823</b> | 2.695 | 0.275 | 8    | 160,585 | <b>247,3</b> |
| 23                                   | 73 J. CRETARO        | ITA | Phoenix Suzuki Racing                | Suzuki GSX-R600     | ESS   | <b>1'42.021</b> | 2.893 | 0.198 | 8    | 160,273 | <b>243,4</b> |
| 24                                   | 83 L. EPIS           | AUS | Response RE Racing                   | Kawasaki ZX-6R      |       | <b>1'42.036</b> | 2.908 | 0.015 | 8    | 160,249 | <b>246,2</b> |
| 25                                   | 56 P. SEBESTYÉN      | HUN | SSP Hungary by Pedercini Racing      | Kawasaki ZX-6R      | ESS   | <b>1'42.316</b> | 3.188 | 0.280 | 8    | 159,811 | <b>248,5</b> |
| 26                                   | 62 V. VAN DER VALK   | NED | Team SWPN                            | Yamaha YZF R6       |       | <b>1'42.557</b> | 3.429 | 0.241 | 8    | 159,435 | <b>246,5</b> |
| 27                                   | 92 H. KUNIKAWA       | JPN | CIA Landlord Insurance Honda         | Honda CBR600RR      | ESS   | <b>1'42.698</b> | 3.570 | 0.141 | 8    | 159,216 | <b>248,8</b> |
| 28                                   | 61 A. ZACCONE        | ITA | MV Agusta Reparto Corse              | MV Agusta F3 675    | ESS   | <b>1'42.951</b> | 3.823 | 0.253 | 6    | 158,825 | <b>244,5</b> |
| 29                                   | 7 D. PIZZOLI         | ITA | Race Department ATK#25               | MV Agusta F3 675    |       | <b>1'43.598</b> | 4.470 | 0.647 | 8    | 157,833 | <b>246,8</b> |
| 30                                   | 74 J. VAN SIKKELERUS | NED | MVR Racing                           | Yamaha YZF R6       | ESS   | <b>1'44.172</b> | 5.044 | 0.574 | 7    | 156,963 | <b>243,7</b> |
| 31                                   | 9 C. LONDON          | NZL | Phoenix Suzuki Racing                | Suzuki GSX-R600     | ESS   | <b>1'45.850</b> | 6.722 | 1.678 | 8    | 154,475 | <b>236,7</b> |
| ----- Out 107% in this Session ----- |                      |     |                                      |                     |       |                 |       |       |      |         |              |
| 32                                   | 35 S. HILL           | GBR | Profile Racing                       | Triumph Daytona 675 |       | <b>1'48.414</b> | 9.286 | 2.564 | 4    | 150,822 | <b>240,7</b> |

|       |            |     |       |      |
|-------|------------|-----|-------|------|
| AIR   | Humidity:  | 56% | Temp: | 9°C  |
| TRACK | Condition: | Dry | Temp: | 10°C |

|         |               |      |            |          |         |      |
|---------|---------------|------|------------|----------|---------|------|
| Records | Pole (SP2)    | 2017 | K.Sofuoglu | 1'37.805 | 167,180 | Km/h |
|         | Race (RC)     | 2015 | J.Cluzel   | 1'38.184 | 166,540 | Km/h |
|         | Circuit (SP2) | 2017 | K.Sofuoglu | 1'37.805 | 167,180 | Km/h |

30/04/2017 Start 09:00 End 09:17 The results are provisional until the end of the time limit for protests and appeals and the completion of the technical checks.

These data/results cannot be reproduced, stored and/or transmitted in whole or in part by any manner of electronic, mechanical, photocopying, recording, broadcasting or otherwise now known or herein after developed without the previous express consent by the copyright owner, except for reproduction in daily press and regular printed publications on sale to the public within 60 days of the event related to those data/results and always provided that copyright symbol appears together as follows below.

© DORNA WSBK ORGANIZATION Srl 2017



## Dutch Round, 28-29-30 April 2017

### World Supersport - Results Warm Up

#### Session Highlights

| Local Time | No. Rider  | Description                                |
|------------|------------|--|
| 09.00.00   |            | Start                                      |
| 09.12.41   |            | WorldSSP Pit Intervention Time: 76secs     |
| 09.15.20   | 77 K. RYDE | Lap Cancelled - Exit Track Limits - Turn 8 |
| 09.17.13   |            | End Of Session                             |

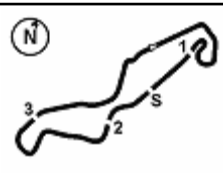
#### Fastest Laps Sequence

| No. | Rider         | Nat | Team                              | Bike                | Local Time   | Time            | Gap    | Avg     |
|-----|---------------|-----|-----------------------------------|---------------------|--------------|-----------------|--------|---------|
| 70  | R. MULHAUSER  | SUI | CIA Landlord Insurance Honda      | Honda CBR600RR      | 09:03'30.619 | <b>1'42.554</b> |        | 159,440 |
| 81  | L. STAPLEFORD | GBR | Profile Racing                    | Triumph Daytona 675 | 09:03'44.407 | <b>1'42.055</b> | -0.499 | 160,219 |
| 77  | K. RYDE       | GBR | Kawasaki Puccetti Racing          | Kawasaki ZX-6R      | 09:03'52.659 | <b>1'41.170</b> | -0.885 | 161,621 |
| 64  | F. CARICASULO | ITA | GRT Yamaha Official WorldSSP Team | Yamaha YZF R6       | 09:03'52.908 | <b>1'41.100</b> | -0.070 | 161,733 |
| 32  | S. MORAIS     | RSA | Kallio Racing                     | Yamaha YZF R6       | 09:05'29.333 | <b>1'40.671</b> | -0.429 | 162,422 |
| 77  | K. RYDE       | GBR | Kawasaki Puccetti Racing          | Kawasaki ZX-6R      | 09:05'32.660 | <b>1'40.001</b> | -0.670 | 163,510 |
| 1   | K. SOFUOGLU   | TUR | Kawasaki Puccetti Racing          | Kawasaki ZX-6R      | 09:08'14.218 | <b>1'39.967</b> | -0.034 | 163,566 |
| 1   | K. SOFUOGLU   | TUR | Kawasaki Puccetti Racing          | Kawasaki ZX-6R      | 09:09'53.900 | <b>1'39.682</b> | -0.285 | 164,034 |
| 1   | K. SOFUOGLU   | TUR | Kawasaki Puccetti Racing          | Kawasaki ZX-6R      | 09:11'33.177 | <b>1'39.277</b> | -0.405 | 164,703 |
| 1   | K. SOFUOGLU   | TUR | Kawasaki Puccetti Racing          | Kawasaki ZX-6R      | 09:13'12.305 | <b>1'39.128</b> | -0.149 | 164,950 |

Start 09:00 End 09:17 The results are provisional until the end of the time limit for protests and appeals and the completion of the technical checks.

These data/results cannot be reproduced, stored and/or transmitted in whole or in part by any manner of electronic, mechanical, photocopying, recording, broadcasting or otherwise now known or herein after developed without the previous express consent by the copyright owner, except for reproduction in daily press and regular printed publications on sale to the public within 60 days of the event related to those data/results and always provided that copyright symbol appears together as follows below.

© DORNA WSBK ORGANIZATION Srl 2017



## Dutch Round, 28-29-30 April 2017

### World Supersport - Best Sector & Speed Warm Up

TT Circuit Assen 4.542 m

#### BEST LAP

|    |                      |                     |          |
|----|----------------------|---------------------|----------|
| 1  | 1 K. SOFUOGLU        | Kawasaki ZX-6R      | 1'39.128 |
| 2  | 144 L. MAHIAS        | Yamaha YZF R6       | 1'39.354 |
| 3  | 32 S. MORAIS         | Yamaha YZF R6       | 1'39.811 |
| 4  | 111 K. SMITH         | Honda CBR600RR      | 1'39.905 |
| 5  | 77 K. RYDE           | Kawasaki ZX-6R      | 1'40.001 |
| 6  | 99 P. JACOBSEN       | MV Austa F3 675     | 1'40.027 |
| 7  | 11 C. GAMARINO       | Honda CBR600RR      | 1'40.109 |
| 8  | 16 J. CLUZEL         | Honda CBR600RR      | 1'40.171 |
| 9  | 64 F. CARICASULO     | Yamaha YZF R6       | 1'40.222 |
| 10 | 38 H. SOOMER         | Honda CBR600RR      | 1'40.556 |
| 11 | 81 L. STAPLEFORD     | Triumph Daytona 675 | 1'40.742 |
| 12 | 44 R. ROLFO          | MV Austa F3 675     | 1'40.817 |
| 13 | 66 N. TUULI          | Yamaha YZF R6       | 1'40.838 |
| 14 | 47 R. HARTOG         | Kawasaki ZX-6R      | 1'40.868 |
| 15 | 65 M. CANDUCCI       | Kawasaki ZX-6R      | 1'40.909 |
| 16 | 63 Z. KHAIRUDDIN     | Kawasaki ZX-6R      | 1'41.100 |
| 17 | 13 A. WEST           | Yamaha YZF R6       | 1'41.124 |
| 18 | 70 R. MULHAUSER      | Honda CBR600RR      | 1'41.187 |
| 19 | 26 K. WATANABE       | Kawasaki ZX-6R      | 1'41.379 |
| 20 | 4 G. REA             | Kawasaki ZX-6R      | 1'41.505 |
| 21 | 10 N. CALERO         | Kawasaki ZX-6R      | 1'41.548 |
| 22 | 78 H. OKUBO          | Honda CBR600RR      | 1'41.823 |
| 23 | 73 J. CRETARO        | Suzuki GSX-R600     | 1'42.021 |
| 24 | 83 L. EPIS           | Kawasaki ZX-6R      | 1'42.036 |
| 25 | 56 P. SEBESTYÉN      | Kawasaki ZX-6R      | 1'42.316 |
| 26 | 62 V. VAN DER VALK   | Yamaha YZF R6       | 1'42.557 |
| 27 | 92 H. KUNIKAWA       | Honda CBR600RR      | 1'42.698 |
| 28 | 61 A. ZACCONE        | MV Austa F3 675     | 1'42.951 |
| 29 | 7 D. PIZZOLI         | MV Austa F3 675     | 1'43.598 |
| 30 | 74 J. VAN SIKKELERUS | Yamaha YZF R6       | 1'44.172 |
| 31 | 9 C. LONDON          | Suzuki GSX-R600     | 1'45.850 |
| 32 | 35 S. HILL           | Triumph Daytona 675 | 1'48.414 |

#### SPEED

|    |                      |                     |       |
|----|----------------------|---------------------|-------|
| 1  | 66 N. TUULI          | Yamaha YZF R6       | 254.9 |
| 2  | 32 S. MORAIS         | Yamaha YZF R6       | 254.6 |
| 3  | 77 K. RYDE           | Kawasaki ZX-6R      | 252.5 |
| 4  | 63 Z. KHAIRUDDIN     | Kawasaki ZX-6R      | 251.4 |
| 5  | 16 J. CLUZEL         | Honda CBR600RR      | 251.4 |
| 6  | 38 H. SOOMER         | Honda CBR600RR      | 251.1 |
| 7  | 144 L. MAHIAS        | Yamaha YZF R6       | 250.5 |
| 8  | 111 K. SMITH         | Honda CBR600RR      | 249.9 |
| 9  | 10 N. CALERO         | Kawasaki ZX-6R      | 249.6 |
| 10 | 64 F. CARICASULO     | Yamaha YZF R6       | 249.3 |
| 11 | 1 K. SOFUOGLU        | Kawasaki ZX-6R      | 249.0 |
| 12 | 92 H. KUNIKAWA       | Honda CBR600RR      | 248.8 |
| 13 | 70 R. MULHAUSER      | Honda CBR600RR      | 248.5 |
| 14 | 56 P. SEBESTYÉN      | Kawasaki ZX-6R      | 248.5 |
| 15 | 65 M. CANDUCCI       | Kawasaki ZX-6R      | 248.2 |
| 16 | 99 P. JACOBSEN       | MV Austa F3 675     | 248.2 |
| 17 | 11 C. GAMARINO       | Honda CBR600RR      | 247.9 |
| 18 | 47 R. HARTOG         | Kawasaki ZX-6R      | 247.9 |
| 19 | 78 H. OKUBO          | Honda CBR600RR      | 247.3 |
| 20 | 26 K. WATANABE       | Kawasaki ZX-6R      | 247.0 |
| 21 | 7 D. PIZZOLI         | MV Austa F3 675     | 246.8 |
| 22 | 62 V. VAN DER VALK   | Yamaha YZF R6       | 246.5 |
| 23 | 4 G. REA             | Kawasaki ZX-6R      | 246.5 |
| 24 | 83 L. EPIS           | Kawasaki ZX-6R      | 246.2 |
| 25 | 81 L. STAPLEFORD     | Triumph Daytona 675 | 245.4 |
| 26 | 44 R. ROLFO          | MV Austa F3 675     | 245.1 |
| 27 | 61 A. ZACCONE        | MV Austa F3 675     | 244.5 |
| 28 | 13 A. WEST           | Yamaha YZF R6       | 244.2 |
| 29 | 74 J. VAN SIKKELERUS | Yamaha YZF R6       | 243.7 |
| 30 | 73 J. CRETARO        | Suzuki GSX-R600     | 243.4 |
| 31 | 35 S. HILL           | Triumph Daytona 675 | 240.7 |
| 32 | 9 C. LONDON          | Suzuki GSX-R600     | 236.7 |

#### SEG. 1

|    |                    |        |
|----|--------------------|--------|
| 1  | 1 K. SOFUOGLU      | 32.403 |
| 2  | 144 L. MAHIAS      | 32.469 |
| 3  | 77 K. RYDE         | 32.663 |
| 4  | 64 F. CARICASULO   | 32.680 |
| 5  | 111 K. SMITH       | 32.698 |
| 6  | 81 L. STAPLEFORD   | 32.706 |
| 7  | 32 S. MORAIS       | 32.709 |
| 8  | 11 C. GAMARINO     | 32.761 |
| 9  | 38 H. SOOMER       | 32.766 |
| 10 | 63 Z. KHAIRUDDIN   | 32.775 |
| 11 | 16 J. CLUZEL       | 32.799 |
| 12 | 99 P. JACOBSEN     | 32.834 |
| 13 | 47 R. HARTOG       | 32.899 |
| 14 | 78 H. OKUBO        | 32.899 |
| 15 | 4 G. REA           | 32.900 |
| 16 | 13 A. WEST         | 32.931 |
| 17 | 44 R. ROLFO        | 32.961 |
| 18 | 10 N. CALERO       | 32.979 |
| 19 | 26 K. WATANABE     | 32.991 |
| 20 | 65 M. CANDUCCI     | 33.106 |
| 21 | 70 R. MULHAUSER    | 33.144 |
| 22 | 66 N. TUULI        | 33.172 |
| 23 | 73 J. CRETARO      | 33.248 |
| 24 | 92 H. KUNIKAWA     | 33.310 |
| 25 | 83 L. EPIS         | 33.334 |
| 26 | 62 V. VAN DER VAL  | 33.399 |
| 27 | 56 P. SEBESTYÉN    | 33.483 |
| 28 | 61 A. ZACCONE      | 33.596 |
| 29 | 7 D. PIZZOLI       | 33.768 |
| 30 | 74 J. VAN SIKKELER | 33.857 |
| 31 | 9 C. LONDON        | 34.252 |
| 32 | 35 S. HILL         | 34.592 |

#### SEG. 2

|    |                    |       |
|----|--------------------|-------|
| 1  | 111 K. SMITH       | 5.780 |
| 2  | 32 S. MORAIS       | 5.782 |
| 3  | 63 Z. KHAIRUDDIN   | 5.797 |
| 4  | 77 K. RYDE         | 5.800 |
| 5  | 66 N. TUULI        | 5.804 |
| 6  | 144 L. MAHIAS      | 5.806 |
| 7  | 16 J. CLUZEL       | 5.816 |
| 8  | 64 F. CARICASULO   | 5.822 |
| 9  | 38 H. SOOMER       | 5.827 |
| 10 | 70 R. MULHAUSER    | 5.847 |
| 11 | 1 K. SOFUOGLU      | 5.847 |
| 12 | 26 K. WATANABE     | 5.866 |
| 13 | 65 M. CANDUCCI     | 5.872 |
| 14 | 47 R. HARTOG       | 5.875 |
| 15 | 78 H. OKUBO        | 5.876 |
| 16 | 99 P. JACOBSEN     | 5.880 |
| 17 | 10 N. CALERO       | 5.883 |
| 18 | 11 C. GAMARINO     | 5.889 |
| 19 | 74 J. VAN SIKKELER | 5.893 |
| 20 | 92 H. KUNIKAWA     | 5.894 |
| 21 | 83 L. EPIS         | 5.894 |
| 22 | 7 D. PIZZOLI       | 5.905 |
| 23 | 81 L. STAPLEFORD   | 5.907 |
| 24 | 13 A. WEST         | 5.912 |
| 25 | 4 G. REA           | 5.914 |
| 26 | 56 P. SEBESTYÉN    | 5.938 |
| 27 | 61 A. ZACCONE      | 5.941 |
| 28 | 44 R. ROLFO        | 5.954 |
| 29 | 73 J. CRETARO      | 5.966 |
| 30 | 62 V. VAN DER VAL  | 5.977 |
| 31 | 35 S. HILL         | 6.007 |
| 32 | 9 C. LONDON        | 6.080 |

#### SEG. 3

|    |                    |        |
|----|--------------------|--------|
| 1  | 1 K. SOFUOGLU      | 9.484  |
| 2  | 65 M. CANDUCCI     | 9.546  |
| 3  | 99 P. JACOBSEN     | 9.597  |
| 4  | 144 L. MAHIAS      | 9.608  |
| 5  | 64 F. CARICASULO   | 9.623  |
| 6  | 44 R. ROLFO        | 9.627  |
| 7  | 66 N. TUULI        | 9.629  |
| 8  | 111 K. SMITH       | 9.634  |
| 9  | 32 S. MORAIS       | 9.650  |
| 10 | 77 K. RYDE         | 9.661  |
| 11 | 63 Z. KHAIRUDDIN   | 9.672  |
| 12 | 47 R. HARTOG       | 9.681  |
| 13 | 13 A. WEST         | 9.690  |
| 14 | 16 J. CLUZEL       | 9.699  |
| 15 | 38 H. SOOMER       | 9.707  |
| 16 | 78 H. OKUBO        | 9.742  |
| 17 | 4 G. REA           | 9.759  |
| 18 | 61 A. ZACCONE      | 9.778  |
| 19 | 81 L. STAPLEFORD   | 9.791  |
| 20 | 83 L. EPIS         | 9.796  |
| 21 | 56 P. SEBESTYÉN    | 9.797  |
| 22 | 70 R. MULHAUSER    | 9.811  |
| 23 | 11 C. GAMARINO     | 9.819  |
| 24 | 73 J. CRETARO      | 9.825  |
| 25 | 10 N. CALERO       | 9.850  |
| 26 | 92 H. KUNIKAWA     | 9.951  |
| 27 | 62 V. VAN DER VAL  | 9.961  |
| 28 | 26 K. WATANABE     | 9.964  |
| 29 | 7 D. PIZZOLI       | 9.988  |
| 30 | 9 C. LONDON        | 10.031 |
| 31 | 74 J. VAN SIKKELER | 10.087 |
| 32 | 35 S. HILL         | 10.281 |

#### SEG. 4

|    |                    |        |
|----|--------------------|--------|
| 1  | 111 K. SMITH       | 28.409 |
| 2  | 1 K. SOFUOGLU      | 28.414 |
| 3  | 144 L. MAHIAS      | 28.422 |
| 4  | 11 C. GAMARINO     | 28.471 |
| 5  | 64 F. CARICASULO   | 28.493 |
| 6  | 32 S. MORAIS       | 28.533 |
| 7  | 70 R. MULHAUSER    | 28.659 |
| 8  | 16 J. CLUZEL       | 28.663 |
| 9  | 77 K. RYDE         | 28.679 |
| 10 | 65 M. CANDUCCI     | 28.686 |
| 11 | 38 H. SOOMER       | 28.703 |
| 12 | 99 P. JACOBSEN     | 28.738 |
| 13 | 10 N. CALERO       | 28.803 |
| 14 | 4 G. REA           | 28.820 |
| 15 | 44 R. ROLFO        | 28.830 |
| 16 | 63 Z. KHAIRUDDIN   | 28.845 |
| 17 | 26 K. WATANABE     | 28.848 |
| 18 | 81 L. STAPLEFORD   | 28.868 |
| 19 | 13 A. WEST         | 28.894 |
| 20 | 47 R. HARTOG       | 28.952 |
| 21 | 66 N. TUULI        | 28.966 |
| 22 | 56 P. SEBESTYÉN    | 29.049 |
| 23 | 73 J. CRETARO      | 29.061 |
| 24 | 78 H. OKUBO        | 29.070 |
| 25 | 92 H. KUNIKAWA     | 29.073 |
| 26 | 62 V. VAN DER VAL  | 29.109 |
| 27 | 83 L. EPIS         | 29.166 |
| 28 | 61 A. ZACCONE      | 29.423 |
| 29 | 7 D. PIZZOLI       | 29.457 |
| 30 | 74 J. VAN SIKKELER | 29.514 |
| 31 | 9 C. LONDON        | 30.075 |
| 32 | 35 S. HILL         | 30.272 |

#### SEG. 5

|    |                    |        |
|----|--------------------|--------|
| 1  | 1 K. SOFUOGLU      | 22.922 |
| 2  | 99 P. JACOBSEN     | 22.938 |
| 3  | 144 L. MAHIAS      | 22.957 |
| 4  | 77 K. RYDE         | 23.032 |
| 5  | 16 J. CLUZEL       | 23.033 |
| 6  | 32 S. MORAIS       | 23.085 |
| 7  | 111 K. SMITH       | 23.140 |
| 8  | 11 C. GAMARINO     | 23.158 |
| 9  | 66 N. TUULI        | 23.231 |
| 10 | 64 F. CARICASULO   | 23.277 |
| 11 | 44 R. ROLFO        | 23.303 |
| 12 | 38 H. SOOMER       | 23.310 |
| 13 | 47 R. HARTOG       | 23.314 |
| 14 | 81 L. STAPLEFORD   | 23.341 |
| 15 | 65 M. CANDUCCI     | 23.452 |
| 16 | 26 K. WATANABE     | 23.454 |
| 17 | 13 A. WEST         | 23.511 |
| 18 | 70 R. MULHAUSER    | 23.524 |
| 19 | 10 N. CALERO       | 23.554 |
| 20 | 63 Z. KHAIRUDDIN   | 23.668 |
| 21 | 78 H. OKUBO        | 23.720 |
| 22 | 73 J. CRETARO      | 23.720 |
| 23 | 4 G. REA           | 23.725 |
| 24 | 56 P. SEBESTYÉN    | 23.725 |
| 25 | 83 L. EPIS         | 23.733 |
| 26 | 62 V. VAN DER VAL  | 23.830 |
| 27 | 61 A. ZACCONE      | 23.936 |
| 28 | 92 H. KUNIKAWA     | 23.999 |
| 29 | 7 D. PIZZOLI       | 24.182 |
| 30 | 74 J. VAN SIKKELER | 24.300 |
| 31 | 9 C. LONDON        | 24.592 |
| 32 | 35 S. HILL         | 25.565 |

30/04/2017

These data/results cannot be reproduced, stored and/or transmitted in whole or in part by any manner of electronic, mechanical, photocopying, recording, broadcasting or otherwise now known or herein after developed without the previous express consent by the copyright owner, except for reproduction in daily press and regular printed publications on sale to the public within 60 days of the event related to those data/results and always provided that copyright symbol appears together as follows below.

© DORNA WSBK ORGANIZATION Srl 2017

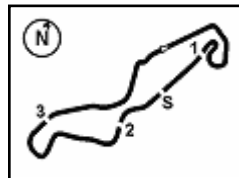
FICR PERUGIA TIMING



Official Tyre Supplier



Official Timekeeper



## Dutch Round, 28-29-30 April 2017

### World Supersport - Ideal Times Warm Up

| No.                       | Rider                | Nat | Bike                | Seg. 1          | Seg. 2         | Seg. 3          | Seg. 4          | Seg. 5          | Ideal Time           |      |       |
|---------------------------|----------------------|-----|---------------------|-----------------|----------------|-----------------|-----------------|-----------------|----------------------|------|-------|
|                           |                      |     |                     | Diff. 1         | Diff. 2        | Diff. 3         | Diff. 4         | Diff. 5         | Best Lap             | Pos. | Diff. |
| 1                         | 1 K. SOFUOGLU        | TUR | Kawasaki ZX-6R      | 32.403<br>0.030 | 5.847          | 9.484<br>0.028  | 28.414          | 22.922          | 1'39.070<br>1'39.128 | 1    | 0.058 |
| 2                         | 144 L. MAHIAS        | FRA | Yamaha YZF R6       | 32.469<br>0.035 | 5.806<br>0.013 | 9.608<br>0.044  | 28.422          | 22.957          | 1'39.262<br>1'39.354 | 2    | 0.092 |
| 3                         | 111 K. SMITH         | GBR | Honda CBR600RR      | 32.698<br>0.155 | 5.780<br>0.089 | 9.634           | 28.409          | 23.140          | 1'39.661<br>1'39.905 | 4    | 0.244 |
| 4                         | 32 S. MORAIS         | RSA | Yamaha YZF R6       | 32.709<br>0.014 | 5.782<br>0.001 | 9.650           | 28.533<br>0.037 | 23.085          | 1'39.759<br>1'39.811 | 3    | 0.052 |
| 5                         | 77 K. RYDE           | GBR | Kawasaki ZX-6R      | 32.663<br>0.124 | 5.800<br>0.005 | 9.661<br>0.037  | 28.679          | 23.032          | 1'39.835<br>1'40.001 | 5    | 0.166 |
| 6                         | 64 F. CARICASULO     | ITA | Yamaha YZF R6       | 32.680<br>0.027 | 5.822<br>0.074 | 9.623<br>0.138  | 28.493<br>0.088 | 23.277          | 1'39.895<br>1'40.222 | 9    | 0.327 |
| 7                         | 99 P. JACOBSEN       | USA | MV Agusta F3 675    | 32.834<br>0.040 | 5.880          | 9.597           | 28.738          | 22.938          | 1'39.987<br>1'40.027 | 6    | 0.040 |
| 8                         | 16 J. CLUZEL         | FRA | Honda CBR600RR      | 32.799          | 5.816          | 9.699<br>0.029  | 28.663<br>0.051 | 23.033<br>0.081 | 1'40.010<br>1'40.171 | 8    | 0.161 |
| 9                         | 11 C. GAMARINO       | ITA | Honda CBR600RR      | 32.761          | 5.889<br>0.011 | 9.819           | 28.471          | 23.158          | 1'40.098<br>1'40.109 | 7    | 0.011 |
| 10                        | 38 H. SOOMER         | EST | Honda CBR600RR      | 32.766<br>0.216 | 5.827<br>0.027 | 9.707           | 28.703          | 23.310          | 1'40.313<br>1'40.556 | 10   | 0.243 |
| 11                        | 81 L. STAPLEFORD     | GBR | Triumph Daytona 675 | 32.706          | 5.907<br>0.020 | 9.791           | 28.868<br>0.109 | 23.341          | 1'40.613<br>1'40.742 | 11   | 0.129 |
| 12                        | 65 M. CANDUCCI       | ITA | Kawasaki ZX-6R      | 33.106          | 5.872          | 9.546           | 28.686<br>0.247 | 23.452          | 1'40.662<br>1'40.909 | 15   | 0.247 |
| 13                        | 44 R. ROLFO          | ITA | MV Agusta F3 675    | 32.961          | 5.954<br>0.022 | 9.627           | 28.830<br>0.111 | 23.303<br>0.009 | 1'40.675<br>1'40.817 | 12   | 0.142 |
| 14                        | 47 R. HARTOG         | NED | Kawasaki ZX-6R      | 32.899          | 5.875<br>0.004 | 9.681           | 28.952<br>0.143 | 23.314          | 1'40.721<br>1'40.868 | 14   | 0.147 |
| 15                        | 63 Z. KHAIRUDDIN     | MAS | Kawasaki ZX-6R      | 32.775<br>0.189 | 5.797<br>0.083 | 9.672<br>0.071  | 28.845          | 23.668          | 1'40.757<br>1'41.100 | 16   | 0.343 |
| 16                        | 66 N. TUULI          | FIN | Yamaha YZF R6       | 33.172          | 5.804<br>0.036 | 9.629           | 28.966          | 23.231          | 1'40.802<br>1'40.838 | 13   | 0.036 |
| 17                        | 13 A. WEST           | AUS | Yamaha YZF R6       | 32.931<br>0.092 | 5.912<br>0.005 | 9.690           | 28.894<br>0.089 | 23.511          | 1'40.938<br>1'41.124 | 17   | 0.186 |
| 18                        | 70 R. MULHAUSER      | SUI | Honda CBR600RR      | 33.144          | 5.847<br>0.061 | 9.811           | 28.659<br>0.141 | 23.524          | 1'40.985<br>1'41.187 | 18   | 0.202 |
| 19                        | 10 N. CALERO         | ESP | Kawasaki ZX-6R      | 32.979<br>0.414 | 5.883<br>0.050 | 9.850<br>0.015  | 28.803          | 23.554          | 1'41.069<br>1'41.548 | 21   | 0.479 |
| 20                        | 4 G. REA             | GBR | Kawasaki ZX-6R      | 32.900<br>0.187 | 5.914<br>0.091 | 9.759<br>0.029  | 28.820          | 23.725<br>0.080 | 1'41.118<br>1'41.505 | 20   | 0.387 |
| 21                        | 26 K. WATANABE       | JPN | Kawasaki ZX-6R      | 32.991          | 5.866<br>0.114 | 9.964<br>0.026  | 28.848<br>0.116 | 23.454          | 1'41.123<br>1'41.379 | 19   | 0.256 |
| 22                        | 78 H. OKUBO          | JPN | Honda CBR600RR      | 32.899<br>0.317 | 5.876<br>0.006 | 9.742<br>0.010  | 29.070<br>0.183 | 23.720          | 1'41.307<br>1'41.823 | 22   | 0.516 |
| 23                        | 73 J. CRETARO        | ITA | Suzuki GSX-R600     | 33.248          | 5.966          | 9.825<br>0.033  | 29.061<br>0.118 | 23.720<br>0.050 | 1'41.820<br>1'42.021 | 23   | 0.201 |
| 24                        | 83 L. EPIS           | AUS | Kawasaki ZX-6R      | 33.334          | 5.894<br>0.056 | 9.796<br>0.039  | 29.166<br>0.018 | 23.733          | 1'41.923<br>1'42.036 | 24   | 0.113 |
| 25                        | 56 P. SEBESTYÉN      | HUN | Kawasaki ZX-6R      | 33.483          | 5.938<br>0.054 | 9.797<br>0.081  | 29.049<br>0.061 | 23.725<br>0.128 | 1'41.992<br>1'42.316 | 25   | 0.324 |
| 26                        | 92 H. KUNIKAWA       | JPN | Honda CBR600RR      | 33.310          | 5.894<br>0.045 | 9.951<br>0.209  | 29.073<br>0.136 | 23.999<br>0.081 | 1'42.227<br>1'42.698 | 27   | 0.471 |
| 27                        | 62 V. VAN DER VALK   | NED | Yamaha YZF R6       | 33.399<br>0.051 | 5.977<br>0.019 | 9.961<br>0.030  | 29.109<br>0.030 | 23.830<br>0.181 | 1'42.276<br>1'42.557 | 26   | 0.281 |
| 28                        | 61 A. ZACCONE        | ITA | MV Agusta F3 675    | 33.596<br>0.182 | 5.941<br>0.017 | 9.778<br>0.007  | 29.423          | 23.936<br>0.071 | 1'42.674<br>1'42.951 | 28   | 0.277 |
| 29                        | 7 D. PIZZOLI         | ITA | MV Agusta F3 675    | 33.768          | 5.905          | 9.988<br>0.047  | 29.457<br>0.165 | 24.182<br>0.086 | 1'43.300<br>1'43.598 | 29   | 0.298 |
| 30                        | 74 J. VAN SIKKELERUS | NED | Yamaha YZF R6       | 33.857          | 5.893          | 10.087          | 29.514          | 24.300<br>0.521 | 1'43.651<br>1'44.172 | 30   | 0.521 |
| 31                        | 9 C. LONDON          | NZL | Suzuki GSX-R600     | 34.252<br>0.154 | 6.080<br>0.081 | 10.031<br>0.220 | 30.075<br>0.198 | 24.592<br>0.167 | 1'45.030<br>1'45.850 | 31   | 0.820 |
| 32                        | 35 S. HILL           | GBR | Triumph Daytona 675 | 34.592<br>1.606 | 6.007<br>0.071 | 10.281<br>0.020 | 30.272          | 25.565          | 1'46.717<br>1'48.414 | 32   | 1.697 |
| <b>Overall Ideal Time</b> |                      |     |                     | 32.403          | 5.780          | 9.484           | 28.409          | 22.922          | 1'38.998             |      |       |

30/04/2017

These data/results cannot be reproduced, stored and/or transmitted in whole or in part by any manner of electronic, mechanical, photocopying, recording, broadcasting or otherwise now known or herein after developed without the previous express consent by the copyright owner, except for reproduction in daily press and regular printed publications on sale to the public within 60 days of the event related to those data/results and always provided that copyright symbol appears together as follows below.

© DORNA WSBK ORGANIZATION Srl 2017

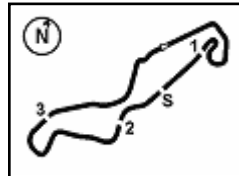
FICR PERUGIA TIMING



Official Tyre Supplier



Official Timekeeper



### Dutch Round, 28-29-30 April 2017

#### World Supersport - Ideal Times Warm Up

| No. Rider | Nat | Bike | Seg. 1  | Seg. 2  | Seg. 3  | Seg. 4  | Seg. 5  | Ideal Time |      |       |
|-----------|-----|------|---------|---------|---------|---------|---------|------------|------|-------|
|           |     |      | Diff. 1 | Diff. 2 | Diff. 3 | Diff. 4 | Diff. 5 | Best Lap   | Pos. | Diff. |

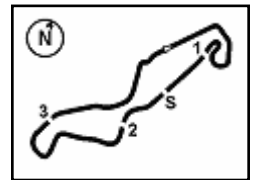
30/04/2017  
 These data/results cannot be reproduced, stored and/or transmitted in whole or in part by any manner of electronic, mechanical, photocopying, recording, broadcasting or otherwise now known or herein after developed without the previous express consent by the copyright owner, except for reproduction in daily press and regular printed publications on sale to the public within 60 days of the event related to those data/results and always provided that copyright symbol appears together as follows below.  
 © DORNA WSBK ORGANIZATION Srl 2017











TT Circuit Assen 4.542 m

## Dutch Round, 28-29-30 April 2017

### World Supersport - Chronological Analysis Warm Up

| Lap | Seg. 1        | Seg. 2       | Seg. 3       | Seg. 4        | Seg. 5        | Lap Time        | km/h         | Local Time  |
|-----|---------------|--------------|--------------|---------------|---------------|-----------------|--------------|-------------|
| 1   | 34.520        | 5.986        | 10.206       | 29.882        | 24.588        | 1'45.182        | 243.4        | 9:03'44.280 |
| 2   | 34.583        | <b>5.894</b> | 10.147       | 29.636        | 24.211        | 1'44.471        | <b>248.8</b> | 9:05'28.751 |
| 3   | 33.701        | 5.976        | 10.164       | 29.470        | 24.104        | 1'43.415        | 245.6        | 9:07'12.166 |
| 4   | 33.584        | 5.971        | 10.082       | 29.162        | 24.092        | 1'42.891        | 244.8        | 9:08'55.057 |
| 5   | 33.499        | 5.950        | 9.971        | 29.201        | 24.336        | 1'42.957        | 245.4        | 9:10'38.014 |
| 6   | 33.478        | 5.965        | 10.192       | 30.212        | <b>23.999</b> | 1'43.846        | 240.7        | 9:12'21.860 |
| 7   | <b>33.310</b> | 5.939        | 10.160       | 29.209        | 24.080        | <b>1'42.698</b> | 247.3        | 9:14'04.558 |
| 8   | 33.404        | 5.970        | <b>9.951</b> | <b>29.073</b> | 24.402        | 1'42.800        | 245.1        | 9:15'47.358 |

#### 28° 61 A. ZACCONE (1'42.951)

| Lap | Seg. 1        | Seg. 2       | Seg. 3       | Seg. 4        | Seg. 5        | Lap Time        | km/h         | Local Time  |
|-----|---------------|--------------|--------------|---------------|---------------|-----------------|--------------|-------------|
| 1   | 35.170        | 6.078        | 10.599       | 31.030        | 25.015        | 1'45.503        | 240.1        | 9:02'32.832 |
| 2   | 33.778        | 5.958        | 9.785        | <b>29.423</b> | 24.007        | <b>1'42.951</b> | <b>244.5</b> | 9:06'01.286 |
| 3   | 33.655        | 5.984        | 9.906        | 29.859        | 35.742        | 1'55.146 P      | 242.3        | 9:07'56.432 |
| 4   | 3'48.436      | 6.034        | 10.178       | 29.952        | 24.228        | 4'58.828 P      | 238.8        | 9:12'55.260 |
| 5   | <b>33.596</b> | <b>5.941</b> | <b>9.778</b> | 29.496        | 24.299        | 1'43.110        | 244.2        | 9:14'38.370 |
| 6   | 33.902        | 5.972        | 10.163       | 29.509        | <b>23.936</b> | 1'43.482        | 243.4        | 9:16'21.852 |

#### 29° 7 D. PIZZOLI (1'43.598)

| Lap | Seg. 1        | Seg. 2       | Seg. 3       | Seg. 4        | Seg. 5        | Lap Time        | km/h         | Local Time  |
|-----|---------------|--------------|--------------|---------------|---------------|-----------------|--------------|-------------|
| 1   | 34.247        | 6.117        | 10.847       | 30.936        | 24.743        | 2'02.363        | 228.4        | 9:01'54.246 |
| 2   | 34.224        | 5.970        | 10.074       | 31.858        | 40.214        | 2'02.363        | 242.6        | 9:03'56.609 |
| 3   | 34.053        | 6.001        | 10.103       | 29.819        | 24.546        | 1'44.693        | 242.3        | 9:05'41.302 |
| 4   | 34.053        | 6.035        | 10.667       | 29.999        | 24.342        | 1'45.096        | 241.0        | 9:07'26.398 |
| 5   | 34.122        | 6.005        | 9.991        | <b>29.457</b> | <b>24.182</b> | 1'43.757        | 239.3        | 9:09'10.155 |
| 6   | 34.221        | 6.061        | <b>9.988</b> | 35.304        | 31.564        | 1'57.138        | 239.6        | 9:11'07.293 |
| 7   | 34.030        | 5.973        | 10.646       | 33.210        | 24.351        | 1'48.210        | 241.5        | 9:12'55.503 |
| 8   | <b>33.768</b> | <b>5.905</b> | 10.035       | 29.622        | 24.268        | <b>1'43.598</b> | <b>246.8</b> | 9:14'39.101 |
| 9   | 34.387        | 5.979        | 10.299       | 30.153        | 24.453        | 1'45.271        | 239.6        | 9:16'24.372 |

#### 30° 74 J. VAN SIKKELERUS (1'44.172)

| Lap | Seg. 1        | Seg. 2       | Seg. 3        | Seg. 4        | Seg. 5        | Lap Time        | km/h         | Local Time  |
|-----|---------------|--------------|---------------|---------------|---------------|-----------------|--------------|-------------|
| 1   | 36.045        | 6.151        | 11.676        | 32.268        | 25.652        | 2'03.394        | 235.7        | 9:02'32.394 |
| 2   | 34.660        | 6.108        | 10.893        | 31.113        | 25.171        | 1'49.330        | 226.5        | 9:04'21.724 |
| 3   | 34.660        | 5.926        | 10.381        | 29.776        | <b>24.300</b> | 1'45.043        | 242.9        | 9:06'06.767 |
| 4   | 34.329        | 5.904        | 10.159        | 29.699        | 24.393        | 1'44.484        | <b>243.7</b> | 9:07'51.251 |
| 5   | 36.261        | 8.186        | 12.211        | 31.371        | 35.028        | 2'03.057 P      | 139.4        | 9:09'54.308 |
| 6   | 1'49.336      | 5.942        | 10.360        | 29.802        | 24.329        | 2'59.769 P      | 240.7        | 9:12'54.077 |
| 7   | <b>33.857</b> | <b>5.893</b> | <b>10.087</b> | <b>29.514</b> | 24.821        | <b>1'44.172</b> | <b>243.7</b> | 9:14'38.249 |
| 8   | 34.180        | 5.912        | 10.296        | 29.790        | 24.882        | 1'45.060        | 235.9        | 9:16'23.309 |

#### 31° 9 C. LONDON (1'45.850)

| Lap | Seg. 1        | Seg. 2       | Seg. 3        | Seg. 4        | Seg. 5        | Lap Time        | km/h         | Local Time  |
|-----|---------------|--------------|---------------|---------------|---------------|-----------------|--------------|-------------|
| 1   | 35.497        | 6.203        | 10.915        | 31.481        | 25.939        | 1'54.821        | 231.9        | 9:02'05.350 |
| 2   | 34.860        | 6.163        | 10.355        | 36.697        | 26.109        | 1'54.821        | 235.2        | 9:04'00.171 |
| 3   | 34.661        | 6.179        | 10.220        | 30.721        | 25.173        | 1'47.153        | 232.4        | 9:05'47.324 |
| 4   | 34.661        | 6.179        | 10.300        | 30.691        | 24.996        | 1'46.827        | 232.9        | 9:07'34.151 |
| 5   | 34.553        | 6.190        | 10.044        | 30.265        | 25.133        | 1'46.185        | 231.1        | 9:09'20.336 |
| 6   | 34.854        | <b>6.080</b> | <b>10.031</b> | 30.148        | 24.964        | 1'46.077        | <b>236.7</b> | 9:11'06.413 |
| 7   | 34.406        | 6.161        | 10.251        | 30.273        | 24.759        | <b>1'45.850</b> | 231.9        | 9:12'52.263 |
| 8   | <b>34.252</b> | 6.146        | 10.420        | 30.289        | 24.829        | 1'45.936        | 233.6        | 9:14'38.199 |
| 9   | 35.006        | 6.131        | 10.195        | <b>30.075</b> | <b>24.592</b> | 1'45.999        | 234.9        | 9:16'24.198 |

#### 32° 35 S. HILL (1'48.414)

| Lap | Seg. 1        | Seg. 2       | Seg. 3        | Seg. 4        | Seg. 5        | Lap Time        | km/h         | Local Time  |
|-----|---------------|--------------|---------------|---------------|---------------|-----------------|--------------|-------------|
| 1   | 35.277        | 6.520        | 10.964        | 31.585        | 26.455        | 2'16.7          | 216.7        | 9:04'29.051 |
| 2   | 35.129        | 6.024        | 10.882        | 36.852        | 26.254        | 1'55.289        | <b>240.7</b> | 9:06'24.340 |
| 3   | 36.198        | 6.057        | 10.408        | 31.436        | 29.162        | 1'52.192        | 238.6        | 9:08'16.532 |
| 4   | <b>34.592</b> | 6.078        | 10.301        | <b>30.272</b> | <b>25.565</b> | <b>1'48.414</b> | 240.4        | 9:10'04.946 |
| 5   |               | <b>6.007</b> | <b>10.281</b> | 34.161        | 48.002        | 2'13.043 P      | 239.6        | 9:12'17.989 |

30/04/2017

**P = Pits In/Out - C = Lap-Time Cancelled**

These data/results cannot be reproduced, stored and/or transmitted in whole or in part by any manner of electronic, mechanical, photocopying, recording, broadcasting or otherwise now known or herein after developed without the previous express consent by the copyright owner, except for reproduction in daily press and regular printed publications on sale to the public within 60 days of the event related to those data/results and always provided that copyright symbol appears together as follows below.

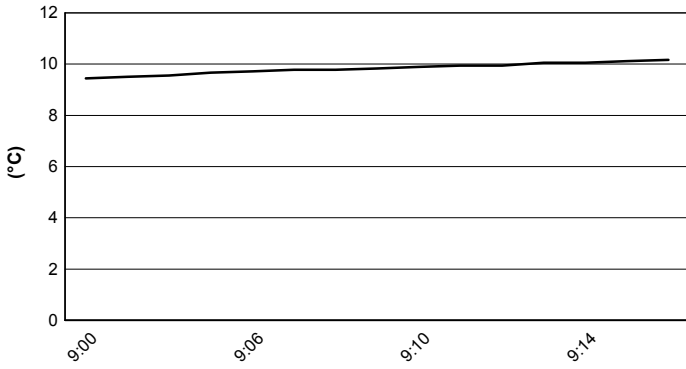
© DORNA WSBK ORGANIZATION Srl 2017



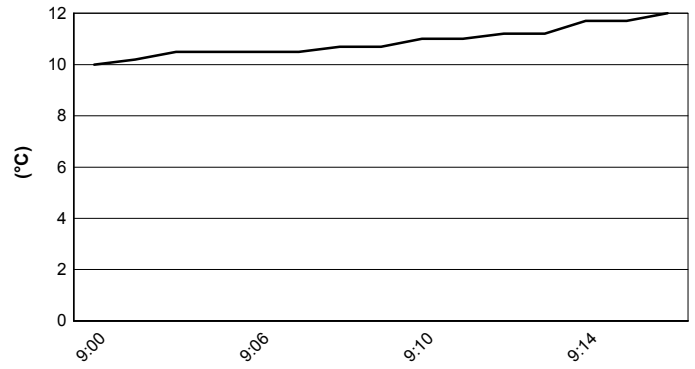
**Dutch Round, 28-29-30 April 2017**  
**World Supersport - Weather Report Warm Up**

Session started 9:00 Session ended 9:17

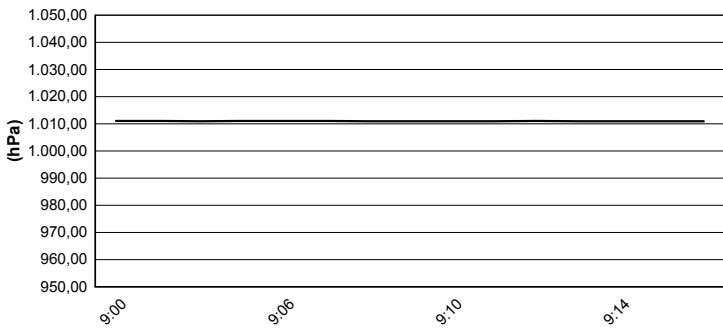
**Air Temperature**



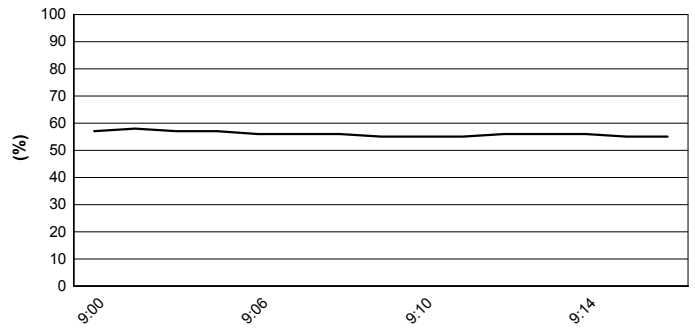
**Track Temperature**



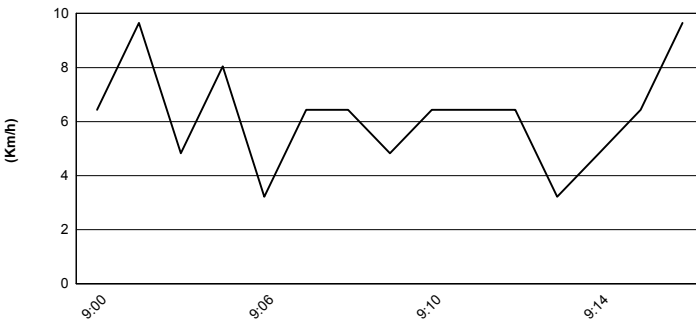
**Air Pressure**



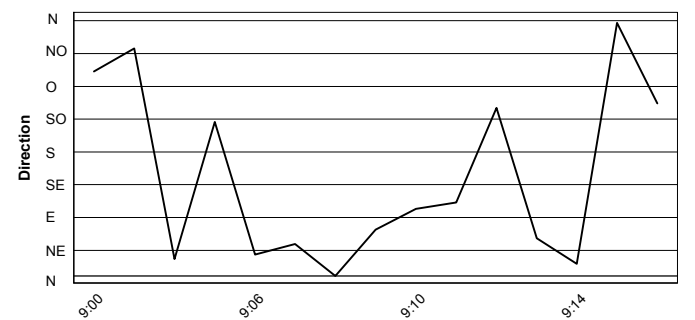
**Humidity**



**Wind Speed**



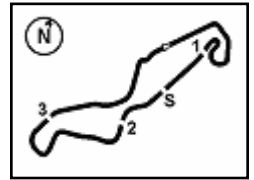
**Wind Direction**



30/04/2017

These data/results cannot be reproduced, stored and/or transmitted in whole or in part by any manner of electronic, mechanical, photocopying, recording, broadcasting or otherwise now known or herein after developed without the previous express consent by the copyright owner, except for reproduction in daily press and regular printed publications on sale to the public within 60 days of the event related to those data/results and always provided that copyright symbol appears together as follows below.

© DORNA WSBK ORGANIZATION Srl 2017



TT Circuit Assen 4.542 m

## Dutch Round, 28-29-30 April 2017

### World Supersport - Starting Grid

18 Laps x 4,542 km = 81,756 km

|    |   |    |   |    |  |
|----|---|----|---|----|--|
| 1  | 1 SOFUOGLU K.<br>Kawasaki 1'37.805 SP2    | 2  | 99 JACOBSEN P.<br>MV Agusta 1'38.479 SP2    | 3  | 65 CANDUCCI M.<br>Kawasaki 1'38.556 SP2  |
| 2  | 144 MAHIAS L.<br>Yamaha 1'38.589 SP2      | 5  | 16 CLUZEL J.<br>Honda 1'38.602 SP2          | 6  | 32 MORAIS S.<br>Yamaha 1'38.618 SP2      |
| 3  | 81 STAPLEFORD L.<br>Triumph 1'38.738 SP2  | 8  | 64 CARICASULO F.<br>Yamaha 1'39.148 SP2     | 9  | 77 RYDE K.<br>Kawasaki 1'39.292 SP2      |
| 4  | 38 SOOMER H.<br>Honda 1'39.656 SP2        | 11 | 111 SMITH K.<br>Honda 1'38.772 SP2          | 12 | 4 REA G.<br>Kawasaki 1'39.976 SP2        |
| 5  | 66 TUULI N.<br>Yamaha 1'39.543 SP1        | 14 | 11 GAMARINO C.<br>Honda 1'39.590 SP1        | 15 | 47 HARTOG R.<br>Kawasaki 1'39.937 SP1    |
| 6  | 44 ROLFO R.<br>MV Agusta 1'40.012 SP1     | 17 | 78 OKUBO H.<br>Honda 1'40.156 SP1           | 18 | 61 ZACCONE A.<br>MV Agusta 1'40.337 SP1  |
| 7  | 63 KHAIRUDDIN Z.<br>Kawasaki 1'40.493 SP1 | 20 | 74 VAN SIKKELERUS J.<br>Yamaha 1'40.845 SP1 | 21 | 26 WATANABE K.<br>Kawasaki 1'40.848 SP1  |
| 8  | 10 CALERO N.<br>Kawasaki 1'40.913 SP1     | 23 | 70 MULHAUSER R.<br>Honda 1'40.518 SP1       | 24 | 35 HILL S.<br>Triumph 1'41.326 SP1       |
| 9  | 83 EPIS L.<br>Kawasaki 1'41.474 SP1       | 26 | 73 CRETARO J.<br>Suzuki 1'41.486 SP1        | 27 | 56 SEBESTYÉN P.<br>Kawasaki 1'41.715 SP1 |
| 10 | 62 VAN DER VALK V.<br>Yamaha 1'41.855 SP1 | 29 | 13 WEST A.<br>Yamaha 1'41.475 SP1           | 30 | 7 PIZZOLI D.<br>MV Agusta 1'43.340 SP1   |
| 11 | 9 LONDON C.<br>Suzuki 1'44.714 SP1        | 32 | 92 KUNIKAWA H.<br>Honda 1'42.057 SP1        |    |  |

The N. 13 (West A.), 70 (Mulhauser R.), 92 (Kunikawa H.) and 111 (Smith K.) have been demoted by 3 grid positions

30/04/2017 Jury President .....

..... Race Director

These data/results cannot be reproduced, stored and/or transmitted in whole or in part by any manner of electronic, mechanical, photocopying, recording, broadcasting or otherwise now known or herein after developed without the previous express consent by the copyright owner, except for reproduction in daily press and regular printed publications on sale to the public within 60 days of the event related to those data/results and always provided that copyright symbol appears together as follows below.

© DORNA WSBK ORGANIZATION Srl 2017

FICR PERUGIA TIMING



Official Tyre Supplier



Official Timekeeper