

Dutch Round, 28-29-30 April 2017

World Supersport 300 - Free Practices Combined Results

TT Circuit Assen 4.542 m

No.	Rider	Nat	Team	Bike	FP1	FP2	Time	Gap	Rel.	Avg	Laps
1	15 A. COPPOLA	ITA	SK Racing	Yamaha YZF-R3	1'56.674	1'55.151	1'55.151			141,998	24
2	20 D. LOUREIRO	RSA	DS Junior Team	Kawasaki Ninja 300	1'57.600	1'55.640	1'55.640	0.489	0.489	141,397	23
3	25 B. SÁNCHEZ	ESP	Halcourier Racing	Yamaha YZF-R3	1'57.660	1'55.675	1'55.675	0.524	0.035	141,355	28
4	22 M. KALININ	UKR	Team MOTOXRACING	Yamaha YZF-R3	1'57.071	1'55.683	1'55.683	0.532	0.008	141,345	24
5	88 M. PEREZ	ESP	WILSport Racedays	Honda CBR500R	1'56.727	1'55.956	1'55.956	0.805	0.273	141,012	24
6	23 M. BASTIANELLI	ITA	3570 Made in CIV	Kawasaki Ninja 300	2'06.036	1'55.980	1'55.980	0.829	0.024	140,983	17
7	99 P. GRASSIA	ITA	3570 Made in CIV	Kawasaki Ninja 300	1'56.866	1'56.051	1'56.051	0.900	0.071	140,897	24
8	75 S. DEROUE	NED	MTM HS Kawasaki	Kawasaki Ninja 300	1'58.387	1'56.055	1'56.055	0.904	0.004	140,892	24
9	79 C. TAYLOR	GBR	MTM HS Kawasaki	Kawasaki Ninja 300	1'58.509	1'56.155	1'56.155	1.004	0.100	140,771	26
10	6 R. SCHOTMAN	NED	GRT Yamaha WorldSSP300 Team	Yamaha YZF-R3	1'56.172	1'56.958	1'56.172	1.021	0.017	140,750	19
11	2 A. CARRASCO	ESP	ETG Racing	Kawasaki Ninja 300	1'56.757	1'56.192	1'56.192	1.041	0.020	140,726	26
12	4 F. DE BRUIN	NED	Pearle Gebben Racing	Yamaha YZF-R3	1'58.238	1'56.380	1'56.380	1.229	0.188	140,498	24
13	9 R. DOORAKKERS	NED	MVR Racing	Yamaha YZF-R3	2'00.078	1'56.512	1'56.512	1.361	0.132	140,339	25
14	28 P. GIACOMINI	ITA	Terra e Moto	Yamaha YZF-R3	1'58.529	1'56.582	1'56.582	1.431	0.070	140,255	26
15	41 M. GARCIA	ESP	Halcourier Racing	Yamaha YZF-R3	1'58.656	1'56.625	1'56.625	1.474	0.043	140,203	23
16	95 G. DE GRUTTOLA	ITA	SK Racing	Yamaha YZF-R3	1'56.911	1'56.690	1'56.690	1.539	0.065	140,125	25
17	87 A. LICCIARDI	BEL	Team Trasimeno	Yamaha YZF-R3	1'59.658	1'56.765	1'56.765	1.614	0.075	140,035	27
18	84 M. CARBONERA	ITA	SK Racing	Yamaha YZF-R3	2'01.904	1'56.851	1'56.851	1.700	0.086	139,932	24
19	51 G. VAN STRAALLEN	NED	Vos - TKR Racing	Honda CBR500R	2'00.018	1'56.874	1'56.874	1.723	0.023	139,905	14
20	35 A. TRIGLIA	ITA	Scuderia Maranga Racing	Honda CBR500R	1'59.237	1'56.874	1'56.874	1.723		139,905	26
21	18 A. MURLEY	GBR	Team Toth	Yamaha YZF-R3	1'59.887	1'57.067	1'57.067	1.916	0.193	139,674	21
22	54 H. CABUK	TUR	Kawasaki Puccetti Racing	Kawasaki Ninja 300	1'57.223	1'57.847	1'57.223	2.072	0.156	139,488	11
23	121 K. PATOVA	FIN	Kallio Racing	Yamaha YZF-R3	1'59.415	1'57.457	1'57.457	2.306	0.234	139,210	28
24	13 J. FACCO	ITA	Bierreti By 2R	Yamaha YZF-R3	1'58.830	1'57.649	1'57.649	2.498	0.192	138,983	23
25	14 E. DE LA VEGA	FRA	GRT Yamaha WorldSSP300 Team	Yamaha YZF-R3	2'02.802	1'57.654	1'57.654	2.503	0.005	138,977	17
26	80 A. PONTONE	ITA	IODARacing	Yamaha YZF-R3	1'58.319	1'57.734	1'57.734	2.583	0.080	138,883	27
27	12 A. RUSMIPUTRO	INA	Pertamina Almeria Racing Team	Yamaha YZF-R3	2'00.505	1'57.911	1'57.911	2.760	0.177	138,674	25
28	27 F. ROVELLI	ITA	ParkinGO DS Junior Team	Yamaha YZF-R3	2'01.417	1'57.982	1'57.982	2.831	0.071	138,591	23
29	33 D. VALLE	ESP	Halcourier Racing	Yamaha YZF-R3	1'58.600	1'58.069	1'58.069	2.918	0.087	138,489	27
30	17 G. NODERER	GER	Scuderia Maranga Racing	Honda CBR500R	2'00.806	1'58.116	1'58.116	2.965	0.047	138,433	29
31	130 R. FERREIRA	BRA	Kallio Racing	Yamaha YZF-R3	2'06.522	1'58.116	1'58.116	2.965		138,433	24
32	7 N. SETTIMO	ITA	Bierreti By 2R	Yamaha YZF-R3	2'00.236	1'58.334	1'58.334	3.183	0.218	138,178	28
33	52 T. BEZUIDENHOUT	RSA	Team Toth	Yamaha YZF-R3	2'00.228	1'58.453	1'58.453	3.302	0.119	138,040	23
34	19 E. ROVELLI	ITA	ParkinGO DS Junior Team	Yamaha YZF-R3	2'01.025	1'58.858	1'58.858	3.707	0.405	137,569	14
35	21 A. BIDDLE	NZL	Sourz Foods - Benjan Racing	Kawasaki Ninja 300	2'00.534	1'58.947	1'58.947	3.796	0.089	137,466	25
36	62 J. SCHULTZ	RSA	DDM by BWG_Bike & Motor RT_Grimaldi	Kawasaki Ninja 300	2'02.319	1'59.913	1'59.913	4.762	0.966	136,359	20
37	11 N. CUPAIOLI	ITA	3ENNE#Racing	Yamaha YZF-R3	2'05.936	2'02.988	2'02.988	7.837	3.075	132,950	25

28/04/2017

These data/results cannot be reproduced, stored and/or transmitted in whole or in part by any manner of electronic, mechanical, photocopying, recording, broadcasting or otherwise now known or herein after developed without the previous express consent by the copyright owner, except for reproduction in daily press and regular printed publications on sale to the public within 60 days of the event related to those data/results and always provided that copyright symbol appears together as follows below.

© DORNA WSBK ORGANIZATION Srl 2017

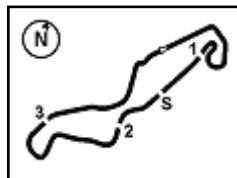
FICR PERUGIA TIMING



Official Tyre Supplier



Official Timekeeper



Dutch Round, 28-29-30 April 2017

World Supersport 300 - Results Free Practice 2nd Session

No.	Rider	Nat	Team	Bike	Time	Gap	Rel.	Laps	Speed	
									Avg	Max
1	15 A. COPPOLA	ITA	SK Racing	Yamaha YZF-R3	1'55.151			13	141,998	183,8
2	20 D. LOUREIRO	RSA	DS Junior Team	Kawasaki Ninja 300	1'55.640	0.489	0.489	12	141,397	179,9
3	25 B. SANCHEZ	ESP	Halcourier Racing	Yamaha YZF-R3	1'55.675	0.524	0.035	14	141,355	180,2
4	22 M. KALININ	UKR	Team MOTOXRACING	Yamaha YZF-R3	1'55.683	0.532	0.008	13	141,345	175,9
5	88 M. PEREZ	ESP	WILSport Racedays	Honda CBR500R	1'55.956	0.805	0.273	12	141,012	178,0
6	23 M. BASTIANELLI	ITA	3570 Made in CIV	Kawasaki Ninja 300	1'55.980	0.829	0.024	14	140,983	174,2
7	99 P. GRASSIA	ITA	3570 Made in CIV	Kawasaki Ninja 300	1'56.051	0.900	0.071	13	140,897	177,1
8	75 S. DEROUE	NED	MTM HS Kawasaki	Kawasaki Ninja 300	1'56.055	0.904	0.004	12	140,892	180,8
9	79 C. TAYLOR	GBR	MTM HS Kawasaki	Kawasaki Ninja 300	1'56.155	1.004	0.100	13	140,771	180,4
10	2 A. CARRASCO	ESP	ETG Racing	Kawasaki Ninja 300	1'56.192	1.041	0.037	14	140,726	176,5
11	4 F. DE BRUIN	NED	Pearle Gebben Racing	Yamaha YZF-R3	1'56.380	1.229	0.188	15	140,498	172,4
12	9 R. DOORAKKERS	NED	MVR Racing	Yamaha YZF-R3	1'56.512	1.361	0.132	14	140,339	176,4
13	28 P. GIACOMINI	ITA	Terra e Moto	Yamaha YZF-R3	1'56.582	1.431	0.070	13	140,255	175,9
14	41 M. GARCIA	ESP	Halcourier Racing	Yamaha YZF-R3	1'56.625	1.474	0.043	13	140,203	179,5
15	95 G. DE GRUTTOLA	ITA	SK Racing	Yamaha YZF-R3	1'56.690	1.539	0.065	14	140,125	177,4
16	87 A. LICCIARDI	BEL	Team Trasimeno	Yamaha YZF-R3	1'56.765	1.614	0.075	14	140,035	182,3
17	84 M. CARBONERA	ITA	SK Racing	Yamaha YZF-R3	1'56.851	1.700	0.086	14	139,932	181,0
18	51 G. VAN STRAALEN	NED	Vos - TKR Racing	Honda CBR500R	1'56.874	1.723	0.023	13	139,905	173,1
19	35 A. TRIGLIA	ITA	Scuderia Maranga Racing	Honda CBR500R	1'56.874	1.723	0.000	14	139,905	178,7
20	6 R. SCHOTMAN	NED	GRT Yamaha WorldSSP300 Team	Yamaha YZF-R3	1'56.958	1.807	0.084	11	139,804	173,7
21	18 A. MURLEY	GBR	Team Toth	Yamaha YZF-R3	1'57.067	1.916	0.109	13	139,674	168,8
22	121 K. PATOVA	FIN	Kallio Racing	Yamaha YZF-R3	1'57.457	2.306	0.390	14	139,210	177,8
23	13 J. FACCO	ITA	Bierreti By 2R	Yamaha YZF-R3	1'57.649	2.498	0.192	14	138,983	178,4
24	14 E. DE LA VEGA	FRA	GRT Yamaha WorldSSP300 Team	Yamaha YZF-R3	1'57.654	2.503	0.005	9	138,977	170,4
25	80 A. PONTONE	ITA	IODARacing	Yamaha YZF-R3	1'57.734	2.583	0.080	14	138,883	174,7
26	54 H. CABUK	TUR	Kawasaki Puccetti Racing	Kawasaki Ninja 300	1'57.847	2.696	0.113	1	138,749	175,2
27	12 A. RUSMIPUTRO	INA	Pertamina Almeria Racing Team	Yamaha YZF-R3	1'57.911	2.760	0.064	13	138,674	178,3
28	27 F. ROVELLI	ITA	ParkinGO DS Junior Team	Yamaha YZF-R3	1'57.982	2.831	0.071	12	138,591	169,8
29	33 D. VALLE	ESP	Halcourier Racing	Yamaha YZF-R3	1'58.069	2.918	0.087	13	138,489	179,9
30	17 G. NODERER	GER	Scuderia Maranga Racing	Honda CBR500R	1'58.116	2.965	0.047	15	138,433	175,4
31	130 R. FERREIRA	BRA	Kallio Racing	Yamaha YZF-R3	1'58.116	2.965	0.000	14	138,433	178,6
32	7 N. SETTIMO	ITA	Bierreti By 2R	Yamaha YZF-R3	1'58.334	3.183	0.218	14	138,178	178,3
33	52 T. BEZUIDENHOUT	RSA	Team Toth	Yamaha YZF-R3	1'58.453	3.302	0.119	13	138,040	170,5
34	19 E. ROVELLI	ITA	ParkinGO DS Junior Team	Yamaha YZF-R3	1'58.858	3.707	0.405	3	137,569	170,8
35	21 A. BIDDLE	NZL	Sourz Foods - Benjan Racing	Kawasaki Ninja 300	1'58.947	3.796	0.089	13	137,466	180,5
36	62 J. SCHULTZ	RSA	DDM by BWG_Bike & Motor RT_Grimaldi	Kawasaki Ninja 300	1'59.913	4.762	0.966	11	136,359	172,7
37	11 N. CUPAIOLI	ITA	3ENNE#Racing	Yamaha YZF-R3	2'02.988	7.837	3.075	12	132,950	176,4

Qualifying Lap Time (107% of 1'55.151): 2'03.213

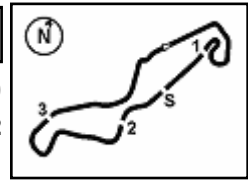
The N. 26 (Hopkins L.) has been declared unfit after FP1

AIR	Humidity:	61%	Temp:	10°C
TRACK	Condition:	Dry	Temp:	20°C

28/04/2017 Start 17:00 End 17:32 The results are provisional until the end of the time limit for protests and appeals and the completion of the technical checks.

These data/results cannot be reproduced, stored and/or transmitted in whole or in part by any manner of electronic, mechanical, photocopying, recording, broadcasting or otherwise now known or herein after developed without the previous express consent by the copyright owner, except for reproduction in daily press and regular printed publications on sale to the public within 60 days of the event related to those data/results and always provided that copyright symbol appears together as follows below.

© DORNA WSBK ORGANIZATION Srl 2017



Dutch Round, 28-29-30 April 2017

World Supersport 300 - Results Free Practice 2nd Session

Session Highlights

Local Time	No. Rider	Description
17.00.00		Start
17.05.52	54 H. CABUK	Crashed - Turn 8
17.07.10	54 H. CABUK	Medical Centre
17.07.41	6 R. SCHOTMAN	Check Transponder
17.10.19	19 E. ROVELLI	Crashed - Turn 9
17.15.47	20 D. LOUREIRO	Lap Cancelled - Exit Track Limits - Turn 8
17.16.08	25 B. SÁNCHEZ	Lap Cancelled - Exit Track Limits - Turn 8
17.18.13	6 R. SCHOTMAN	BLACK FLAG (Transponder)
17.18.33	25 B. SÁNCHEZ	Lap Cancelled - Exit Track Limits - Turn 8
17.21.56	28 P. GIACOMINI	Lap Cancelled - Exit Track Limits - Turn 8
17.26.24	41 M. GARCIA	Lap Cancelled - Exit Track Limits - Turn 8
17.26.38	9 R. DOORAKKERS	Lap Cancelled - Exit Track Limits - Turn 8
17.32.23		End Of Session

Fastest Laps Sequence

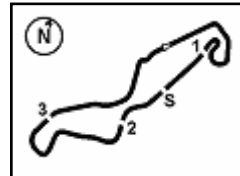
No. Rider	Nat	Team	Bike	Local Time	Time	Gap	Avg
51 G. VAN STRAALLEN	NED	Vos - TKR Racing	Honda CBR500R	17:04'05.842	1'59.863		136,416
17 G. NODERER	GER	Scuderia Maranga Racing	Honda CBR500R	17:04'06.141	1'59.853	-0.10	136,427
4 F. DE BRUIN	NED	Pearle Gebben Racing	Yamaha YZF-R3	17:04'10.635	1'58.368	-1.485	138,139
99 P. GRASSIA	ITA	3570 Made in CIV	Kawasaki Ninja 300	17:04'10.871	1'57.292	-1.076	139,406
15 A. COPPOLA	ITA	SK Racing	Yamaha YZF-R3	17:06'29.680	1'56.825	-0.467	139,963
15 A. COPPOLA	ITA	SK Racing	Yamaha YZF-R3	17:08'26.134	1'56.454	-0.371	140,409
20 D. LOUREIRO	RSA	DS Junior Team	Kawasaki Ninja 300	17:08'30.827	1'56.425	-0.029	140,444
88 M. PEREZ	ESP	WILSport Racedays	Honda CBR500R	17:10'31.267	1'55.956	-0.469	141,012
22 M. KALININ	UKR	Team MOTOXRACING	Yamaha YZF-R3	17:14'07.645	1'55.683	-0.273	141,345
15 A. COPPOLA	ITA	SK Racing	Yamaha YZF-R3	17:29'20.118	1'55.151	-0.532	141,998

Start 17:00 End 17:32 The results are provisional until the end of the time limit for protests and appeals and the completion of the technical checks.

These data/results cannot be reproduced, stored and/or transmitted in whole or in part by any manner of electronic, mechanical, photocopying, recording, broadcasting or otherwise now known or herein after developed without the previous express consent by the copyright owner, except for reproduction in daily press and regular printed publications on sale to the public within 60 days of the event related to those data/results and always provided that copyright symbol appears together as follows below.

© DORNA WSBK ORGANIZATION Srl 2017





TT Circuit Assen 4.542 m

1 / 2

Dutch Round, 28-29-30 April 2017

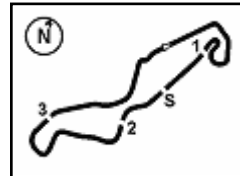
World Supersport 300 - Ideal Times Free Practice 2nd Session

No.	Rider	Nat	Bike	Seg. 1	Seg. 2	Seg. 3	Seg. 4	Seg. 5	Ideal Time		
				Diff. 1	Diff. 2	Diff. 3	Diff. 4	Diff. 5	Best Lap	Pos.	Diff.
1	15 A. COPPOLA	ITA	Yamaha YZF-R3	37.250	7.874 0.253	10.882 0.095	31.610	27.187	1'54.803 1'55.151	2	0.348
2	20 D. LOUREIRO	RSA	Kawasaki Ninja 300	37.188 0.175	8.045	10.826	31.938	27.247 0.221	1'55.244 1'55.640	3	0.396
3	22 M. KALININ	UKR	Yamaha YZF-R3	37.286	8.034 0.059	10.971	31.575 0.372	27.386	1'55.252 1'55.683	5	0.431
4	99 P. GRASSIA	ITA	Kawasaki Ninja 300	37.223 0.065	8.022 0.281	10.983	31.688 0.212	27.577	1'55.493 1'56.051	8	0.558
5	88 M. PEREZ	ESP	Honda CBR500R	37.253 0.163	8.014 0.215	11.127 0.033	31.781	27.370	1'55.545 1'55.956	6	0.411
6	25 B. SÁNCHEZ	ESP	Yamaha YZF-R3	37.182	8.061 0.100	10.973	32.356	27.003	1'55.575 1'55.675	4	0.100
7	75 S. DEROUÉ	NED	Kawasaki Ninja 300	37.724	7.942	10.898	31.936	27.083 0.472	1'55.583 1'56.055	9	0.472
8	23 M. BASTIANELLI	ITA	Kawasaki Ninja 300	37.325 0.062	8.126 0.160	11.008	31.895	27.404	1'55.758 1'55.980	7	0.222
9	9 R. DOORAKKERS	NED	Yamaha YZF-R3	37.108 0.303	8.191	10.923 0.002	32.009	27.594 0.382	1'55.825 1'56.512	13	0.687
10	79 C. TAYLOR	GBR	Kawasaki Ninja 300	37.313	8.055 0.042	11.134	31.895 0.116	27.577 0.023	1'55.974 1'56.155	10	0.181
11	2 A. CARRASCO	ESP	Kawasaki Ninja 300	37.653	8.032 0.144	11.044	31.965	27.354	1'56.048 1'56.192	11	0.144
12	95 G. DE GRUTTOLA	ITA	Yamaha YZF-R3	37.613	8.085 0.014	10.985	31.957 0.354	27.462 0.220	1'56.102 1'56.690	16	0.588
13	51 G. VAN STRAALÉN	NED	Honda CBR500R	37.311	8.291 0.085	11.125	31.983 0.241	27.433 0.405	1'56.143 1'56.874	20	0.731
14	4 F. DE BRUIN	NED	Yamaha YZF-R3	37.505 0.020	8.103 0.083	10.928 0.070	32.129	27.497 0.045	1'56.162 1'56.380	12	0.218
15	6 R. SCHOTMAN	NED	Yamaha YZF-R3	37.595	8.175	10.869	32.099	27.528 0.692	1'56.266 1'56.958	21	0.692
16	41 M. GARCIA	ESP	Yamaha YZF-R3	37.757	8.017 0.067	10.945	32.280	27.278 0.281	1'56.277 1'56.625	15	0.348
17	87 A. LICCIARDI	BEL	Yamaha YZF-R3	37.623 0.058	8.013	11.120 0.219	31.987	27.576 0.169	1'56.319 1'56.765	17	0.446
18	28 P. GIACOMINI	ITA	Yamaha YZF-R3	37.712 0.073	8.078	10.958 0.064	32.217 0.056	27.424	1'56.389 1'56.582	14	0.193
19	35 A. TRIGLIA	ITA	Honda CBR500R	37.620	8.192 0.105	11.026	31.937	27.699 0.098	1'56.474 1'56.874	19	0.400
20	84 M. CARBONERA	ITA	Yamaha YZF-R3	37.775	7.938 0.100	10.996	32.314	27.728	1'56.751 1'56.851	18	0.100
21	80 A. PONTONE	ITA	Yamaha YZF-R3	37.780	8.278 0.140	11.031 0.120	32.053 0.629	27.638 0.065	1'56.780 1'57.734	26	0.954
22	121 K. PATOVA	FIN	Yamaha YZF-R3	37.992 0.079	8.085 0.164	11.157	32.229	27.478 0.273	1'56.941 1'57.457	23	0.516
23	18 A. MURLEY	GBR	Yamaha YZF-R3	37.906	8.368	11.151	32.167	27.475	1'57.067 1'57.067	22	
24	13 J. FACCO	ITA	Yamaha YZF-R3	38.100 0.100	8.138 0.148	11.046	32.441	27.428 0.248	1'57.153 1'57.649	24	0.496
25	14 E. DE LA VEGA	FRA	Yamaha YZF-R3	37.727 0.139	8.336	11.107 0.024	32.197 0.128	27.898 0.098	1'57.265 1'57.654	25	0.389
26	54 H. CABUK	TUR	Kawasaki Ninja 300	37.810 0.208	8.186 0.031	10.978 0.239	32.375	27.973 0.047	1'57.322 1'57.847	27	0.525
27	33 D. VALLE	ESP	Yamaha YZF-R3	38.285 0.228	8.088 0.072	11.157 0.044	32.403	27.484 0.308	1'57.417 1'58.069	30	0.652
28	27 F. ROVELLI	ITA	Yamaha YZF-R3	37.968 0.005	8.214 0.165	11.143 0.394	32.364	27.729	1'57.418 1'57.982	29	0.564
29	7 N. SETTIMO	ITA	Yamaha YZF-R3	37.929 0.681	8.138 0.080	11.276 0.049	32.543	27.638	1'57.524 1'58.334	33	0.810
30	12 A. RUSMIPUTRO	INA	Yamaha YZF-R3	38.109 0.222	8.064	11.183 0.021	32.564	27.748	1'57.668 1'57.911	28	0.243
31	130 R. FERREIRA	BRA	Yamaha YZF-R3	37.932	8.099 0.264	11.191 0.007	32.547	27.959 0.117	1'57.728 1'58.116	31	0.388
32	17 G. NODERER	GER	Honda CBR500R	38.040	8.310 0.043	11.079 0.093	32.377 0.097	27.980 0.097	1'57.786 1'58.116	32	0.330
33	19 E. ROVELLI	ITA	Yamaha YZF-R3	37.889 0.583	8.293 0.006	11.035 0.271	32.924	27.857	1'57.998 1'58.858	35	0.860

28/04/2017

These data/results cannot be reproduced, stored and/or transmitted in whole or in part by any manner of electronic, mechanical, photocopying, recording, broadcasting or otherwise now known or herein after developed without the previous express consent by the copyright owner, except for reproduction in daily press and regular printed publications on sale to the public within 60 days of the event related to those data/results and always provided that copyright symbol appears together as follows below.

© DORNA WSBK ORGANIZATION Srl 2017



TT Circuit Assen 4.542 m
2 / 2

Dutch Round, 28-29-30 April 2017

World Supersport 300 - Ideal Times Free Practice 2nd Session

No.	Rider	Nat	Bike	Seg. 1	Seg. 2	Seg. 3	Seg. 4	Seg. 5	Ideal Time		
				Diff. 1	Diff. 2	Diff. 3	Diff. 4	Diff. 5	Best Lap	Pos.	Diff.
34	52 T. BEZUIDENHOUT	RSA	Yamaha YZF-R3	38.208 0.251	8.341 0.004	11.209	32.489 0.128	27.823	1'58.070 1'58.453	34	0.383
35	21 A. BIDDLE	NZL	Kawasaki Ninja 300	38.384 0.107	7.949 0.077	11.327 0.043	32.835 0.298	27.882 0.045	1'58.377 1'58.947	36	0.570
36	62 J. SCHULTZ	RSA	Kawasaki Ninja 300	38.275 0.910	8.375 0.029	11.244	32.809	28.271	1'58.974 1'59.913	37	0.939
37	11 N. CUPAIOLI	ITA	Yamaha YZF-R3	39.474	8.268 0.148	11.553 0.262	34.245	29.038	2'02.578 2'02.988	38	0.410
Overall Ideal Time				37.108	7.874	10.826	31.575	27.003	1'54.386		

28/04/2017

These data/results cannot be reproduced, stored and/or transmitted in whole or in part by any manner of electronic, mechanical, photocopying, recording, broadcasting or otherwise now known or herein after developed without the previous express consent by the copyright owner, except for reproduction in daily press and regular printed publications on sale to the public within 60 days of the event related to those data/results and always provided that copyright symbol appears together as follows below.

© DORNA WSBK ORGANIZATION Srl 2017

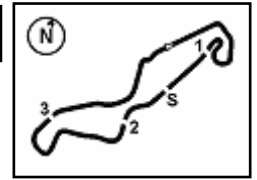
FICR PERUGIA TIMING



Official Tyre Supplier



Official Timekeeper



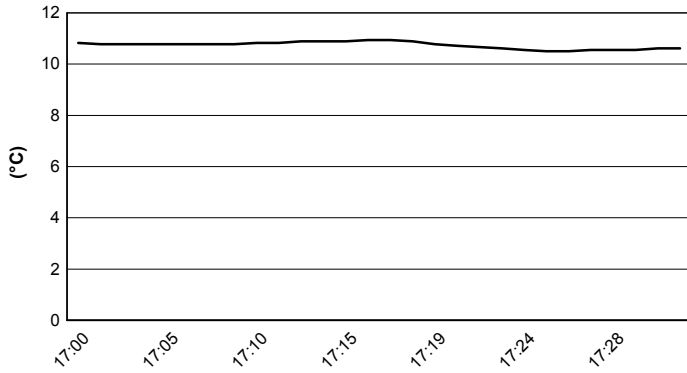
Dutch Round, 28-29-30 April 2017

World Supersport 300 - Weather Report Free Practice 2nd Session

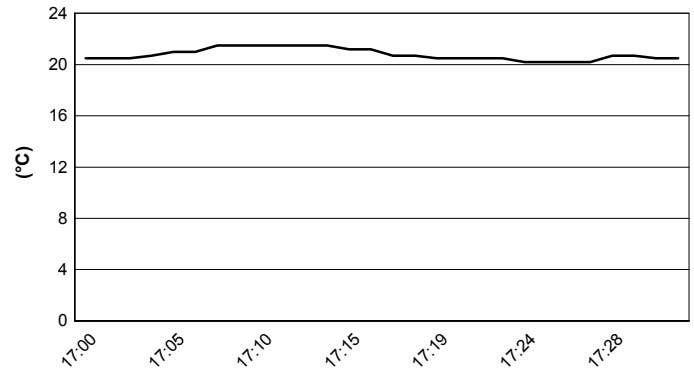
Session started 17:00

Session ended 17:32

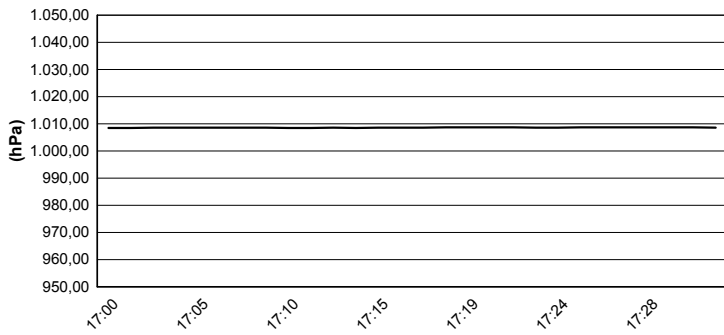
Air Temperature



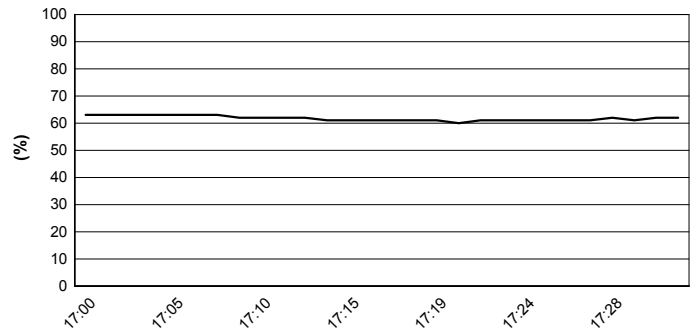
Track Temperature



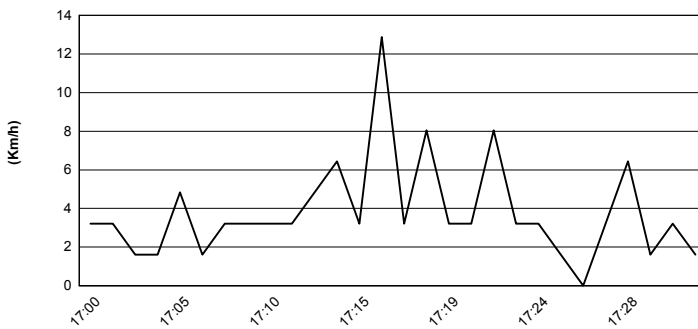
Air Pressure



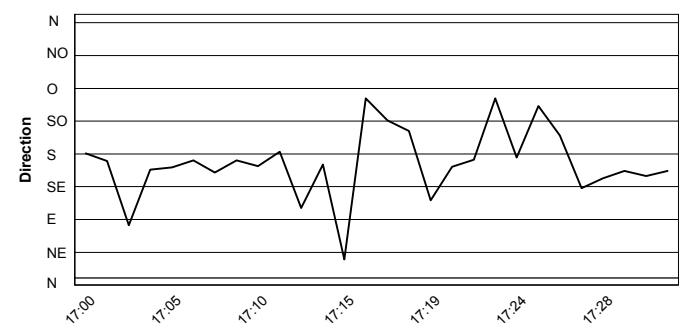
Humidity



Wind Speed



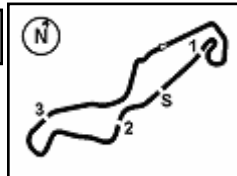
Wind Direction



28/04/2017

These data/results cannot be reproduced, stored and/or transmitted in whole or in part by any manner of electronic, mechanical, photocopying, recording, broadcasting or otherwise now known or herein after developed without the previous express consent by the copyright owner, except for reproduction in daily press and regular printed publications on sale to the public within 60 days of the event related to those data/results and always provided that copyright symbol appears together as follows below.

© DORNA WSBK ORGANIZATION Srl 2017


Dutch Round, 28-29-30 April 2017
World Supersport 300 - Superpoles Entry List
Superpole 1

FPs Pos	No. Rider	Nat	Team	Bike	Time
11	2 A. CARRASCO	ESP	ETG Racing	Kawasaki Ninja 300	1'56.192
12	4 F. DE BRUIN	NED	Pearle Gebben Racing	Yamaha YZF-R3	1'56.380
13	9 R. DOORAKKERS	NED	MVR Racing	Yamaha YZF-R3	1'56.512
14	28 P. GIACOMINI	ITA	Terra e Moto	Yamaha YZF-R3	1'56.582
15	41 M. GARCIA	ESP	Halcourier Racing	Yamaha YZF-R3	1'56.625
16	95 G. DE GRUTTOLA	ITA	SK Racing	Yamaha YZF-R3	1'56.690
17	87 A. LICCIARDI	BEL	Team Trasimeno	Yamaha YZF-R3	1'56.765
18	84 M. CARBONERA	ITA	SK Racing	Yamaha YZF-R3	1'56.851
19	51 G. VAN STRAALEN	NED	Vos - TKR Racing	Honda CBR500R	1'56.874
20	35 A. TRIGLIA	ITA	Scuderia Maranga Racing	Honda CBR500R	1'56.874
21	18 A. MURLEY	GBR	Team Toth	Yamaha YZF-R3	1'57.067
22	54 H. CABUK	TUR	Kawasaki Puccetti Racing	Kawasaki Ninja 300	1'57.223
23	121 K. PATOVA	FIN	Kallio Racing	Yamaha YZF-R3	1'57.457
24	13 J. FACCO	ITA	Bierreti By 2R	Yamaha YZF-R3	1'57.649
25	14 E. DE LA VEGA	FRA	GRT Yamaha WorldSSP300 Team	Yamaha YZF-R3	1'57.654
26	80 A. PONTONE	ITA	IODARacing	Yamaha YZF-R3	1'57.734
27	12 A. RUSMIPUTRO	INA	Pertamina Almeria Racing Team	Yamaha YZF-R3	1'57.911
28	27 F. ROVELLI	ITA	ParkinGO DS Junior Team	Yamaha YZF-R3	1'57.982
29	33 D. VALLE	ESP	Halcourier Racing	Yamaha YZF-R3	1'58.069
30	17 G. NODERER	GER	Scuderia Maranga Racing	Honda CBR500R	1'58.116
31	130 R. FERREIRA	BRA	Kallio Racing	Yamaha YZF-R3	1'58.116
32	7 N. SETTIMO	ITA	Bierreti By 2R	Yamaha YZF-R3	1'58.334
33	52 T. BEZUIDENHOUT	RSA	Team Toth	Yamaha YZF-R3	1'58.453
34	19 E. ROVELLI	ITA	ParkinGO DS Junior Team	Yamaha YZF-R3	1'58.858
35	21 A. BIDDLE	NZL	Sourz Foods - Benjan Racing	Kawasaki Ninja 300	1'58.947
36	62 J. SCHULTZ	RSA	DDM by BWG_Bike & Motor RT_Grimaldi	Kawasaki Ninja 300	1'59.913
38	11 N. CUPAIOLI	ITA	3ENNE#Racing	Yamaha YZF-R3	2'02.988

Superpole 2

FPs Pos	No. Rider	Nat	Team	Bike	Time
1	15 A. COPPOLA	ITA	SK Racing	Yamaha YZF-R3	1'55.151
2	20 D. LOUREIRO	RSA	DS Junior Team	Kawasaki Ninja 300	1'55.640
3	25 B. SÁNCHEZ	ESP	Halcourier Racing	Yamaha YZF-R3	1'55.675
4	22 M. KALININ	UKR	Team MOTOXRACING	Yamaha YZF-R3	1'55.683
5	88 M. PEREZ	ESP	WILSport Racedays	Honda CBR500R	1'55.956
6	23 M. BASTIANELLI	ITA	3570 Made in CIV	Kawasaki Ninja 300	1'55.980
7	99 P. GRASSIA	ITA	3570 Made in CIV	Kawasaki Ninja 300	1'56.051
8	75 S. DEROUÉ	NED	MTM HS Kawasaki	Kawasaki Ninja 300	1'56.055
9	79 C. TAYLOR	GBR	MTM HS Kawasaki	Kawasaki Ninja 300	1'56.155
10	6 R. SCHOTMAN	NED	GRT Yamaha WorldSSP300 Team	Yamaha YZF-R3	1'56.172

*
*

* These positions are assigned to the 1st and 2nd rider classified in Superpole 1

28/04/2017 1:

These data/results cannot be reproduced, stored and/or transmitted in whole or in part by any manner of electronic, mechanical, photocopying, recording, broadcasting or otherwise now known or herein after developed without the previous express consent by the copyright owner, except for reproduction in daily press and regular printed publications on sale to the public within 60 days of the event related to those data/results and always provided that copyright symbol appears together as follows below.

© DORNA WSBK ORGANIZATION Srl 2017

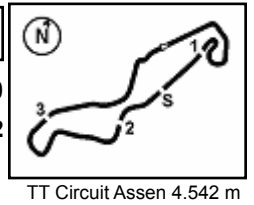
FICR PERUGIA TIMING



Official Tyre Supplier



Official Timekeeper



Dutch Round, 28-29-30 April 2017

World Supersport 300 - Best Laps & Speeds

1 / 2

No.	Rider		Best Lap	FP1		FP2	
	Nat	Bike		laps	speed	laps	speed
1	15	A. COPPOLA	1'55.151	1'56.674	1'55.151		
	ITA	Yamaha YZF-R3	24 183,7	11 176,9	13 183,7		
2	20	D. LOUREIRO	1'55.640	1'57.600	1'55.640		
	RSA	Kawasaki Ninja 300	23 179,9	11 175,9	12 179,9		
3	25	B. SÁNCHEZ	1'55.675	1'57.660	1'55.675		
	ESP	Yamaha YZF-R3	28 180,2	14 177,8	14 180,2		
4	22	M. KALININ	1'55.683	1'57.071	1'55.683		
	UKR	Yamaha YZF-R3	24 176,5	11 176,5	13 175,9		
5	88	M. PEREZ	1'55.956	1'56.727	1'55.956		
	ESP	Honda CBR500R	24 177,9	12 172,5	12 177,9		
6	23	M. BASTIANELLI	1'55.980	2'06.036	1'55.980		
	ITA	Kawasaki Ninja 300	17 174,2	3 165,0	14 174,2		
7	99	P. GRASSIA	1'56.051	1'56.866	1'56.051		
	ITA	Kawasaki Ninja 300	24 177,1	11 172,2	13 177,1		
8	75	S. DEROUÉ	1'56.055	1'58.387	1'56.055		
	NED	Kawasaki Ninja 300	24 180,8	12 178,4	12 180,8		
9	79	C. TAYLOR	1'56.155	1'58.509	1'56.155		
	GBR	Kawasaki Ninja 300	26 180,8	13 180,8	13 180,3		
10	6	R. SCHOTMAN	1'56.172	1'56.172	1'56.958		
	NED	Yamaha YZF-R3	19 173,6	8 173,5	11 173,6		
11	2	A. CARRASCO	1'56.192	1'56.757	1'56.192		
	ESP	Kawasaki Ninja 300	26 176,5	12 174,9	14 176,5		
12	4	F. DE BRUIN	1'56.380	1'58.238	1'56.380		
	NED	Yamaha YZF-R3	24 172,4	9 171,4	15 172,4		
13	9	R. DOORAKKERS	1'56.512	2'00.078	1'56.512		
	NED	Yamaha YZF-R3	25 176,3	11 166,9	14 176,3		
14	28	P. GIACOMINI	1'56.582	1'58.529	1'56.582		
	ITA	Yamaha YZF-R3	26 175,9	13 171,1	13 175,9		
15	41	M. GARCIA	1'56.625	1'58.656	1'56.625		
	ESP	Yamaha YZF-R3	23 179,4	10 169,2	13 179,4		
16	95	G. DE GRUTTOLA	1'56.690	1'56.911	1'56.690		
	ITA	Yamaha YZF-R3	25 177,3	11 172,1	14 177,3		
17	87	A. LICCIARDI	1'56.765	1'59.658	1'56.765		
	BEL	Yamaha YZF-R3	27 182,3	13 179,0	14 182,3		
18	84	M. CARBONERA	1'56.851	2'01.904	1'56.851		
	ITA	Yamaha YZF-R3	24 180,9	10 171,0	14 180,9		
19	35	A. TRIGLIA	1'56.874	1'59.237	1'56.874		
	ITA	Honda CBR500R	26 178,7	12 173,8	14 178,7		
20	51	G. VAN STRAALLEN	1'56.874	2'00.018	1'56.874		
	NED	Honda CBR500R	14 173,1	1 156,7	13 173,1		

28/04/2017

These data/results cannot be reproduced, stored and/or transmitted in whole or in part by any manner of electronic, mechanical, photocopying, recording, broadcasting or otherwise now known or herein after developed without the previous express consent by the copyright owner, except for reproduction in daily press and regular printed publications on sale to the public within 60 days of the event related to those data/results and always provided that copyright symbol appears together as follows below.

© DORNA WSBK ORGANIZATION Srl 2017

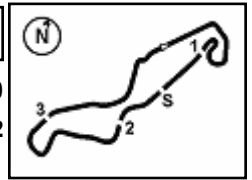
FICR PERUGIA TIMING



Official Tyre Supplier



Official Timekeeper



TT Circuit Assen 4.542 m

Dutch Round, 28-29-30 April 2017

World Supersport 300 - Best Laps & Speeds

2 / 2

No.	Rider		Best Lap	FP1		FP2	
	Nat	Bike		laps	speed	laps	speed
21	18	A. MURLEY	1'57.067	1'59.887	1'57.067		
	GBR	Yamaha YZF-R3	21 168,7	8 168,2	13 168,7		
22	54	H. CABUK	1'57.223	1'57.223	1'57.847		
	TUR	Kawasaki Ninja 300	11 175,2	10 175,0	1 175,2		
23	121	K. PATOVA	1'57.457	1'59.415	1'57.457		
	FIN	Yamaha YZF-R3	28 177,8	14 174,7	14 177,8		
24	13	J. FACCO	1'57.649	1'58.830	1'57.649		
	ITA	Yamaha YZF-R3	23 178,4	9 175,5	14 178,4		
25	14	E. DE LA VEGA	1'57.654	2'02.802	1'57.654		
	FRA	Yamaha YZF-R3	17 170,3	8 167,7	9 170,3		
26	80	A. PONTONE	1'57.734	1'58.319	1'57.734		
	ITA	Yamaha YZF-R3	27 174,6	13 167,8	14 174,6		
27	12	A. RUSMIPUTRO	1'57.911	2'00.505	1'57.911		
	INA	Yamaha YZF-R3	25 178,2	12 176,3	13 178,2		
28	27	F. ROVELLI	1'57.982	2'01.417	1'57.982		
	ITA	Yamaha YZF-R3	23 169,8	11 169,4	12 169,8		
29	33	D. VALLE	1'58.069	1'58.600	1'58.069		
	ESP	Yamaha YZF-R3	27 179,9	14 176,9	13 179,9		
30	17	G. NODERER	1'58.116	2'00.806	1'58.116		
	GER	Honda CBR500R	29 175,3	14 171,5	15 175,3		
31	130	R. FERREIRA	1'58.116	2'06.522	1'58.116		
	BRA	Yamaha YZF-R3	24 178,5	10 167,7	14 178,5		
32	7	N. SETTIMO	1'58.334	2'00.236	1'58.334		
	ITA	Yamaha YZF-R3	28 178,2	14 175,5	14 178,2		
33	52	T. BEZUIDENHOUT	1'58.453	2'00.228	1'58.453		
	RSA	Yamaha YZF-R3	23 170,5	10 166,2	13 170,5		
34	19	E. ROVELLI	1'58.858	2'01.025	1'58.858		
	ITA	Yamaha YZF-R3	14 170,7	11 168,5	3 170,7		
35	21	A. BIDDLE	1'58.947	2'00.534	1'58.947		
	NZL	Kawasaki Ninja 300	25 180,5	12 178,2	13 180,5		
36	62	J. SCHULTZ	1'59.913	2'02.319	1'59.913		
	RSA	Kawasaki Ninja 300	20 172,6	9 169,0	11 172,6		
37	26	L. HOPKINS	2'02.455	2'02.455			
	GBR	Kawasaki Ninja 300	8 170,5	8 170,5			
38	11	N. CUPAIOLI	2'02.988	2'05.936	2'02.988		
	ITA	Yamaha YZF-R3	25 176,3	13 174,0	12 176,3		

28/04/2017

These data/results cannot be reproduced, stored and/or transmitted in whole or in part by any manner of electronic, mechanical, photocopying, recording, broadcasting or otherwise now known or herein after developed without the previous express consent by the copyright owner, except for reproduction in daily press and regular printed publications on sale to the public within 60 days of the event related to those data/results and always provided that copyright symbol appears together as follows below.

© DORNA WSBK ORGANIZATION Srl 2017

FICR PERUGIA TIMING



Official Tyre Supplier



Official Timekeeper