

Spanish Round, 13-14-15 April 2018

World Supersport - Results Warm Up

MotorLand Aragon 5.077 m

1 / 2

No.	Rider	Nat	Team	Bike	Class	Time	Gap	Rel.	Laps	Speed	
										Avg	Max
1	21 R. KRUMMENACHER	SUI	BARDAHL Evan Bros. WorldSSP Team	Yamaha YZF R6		1'54.422			7	159,735	265,4
2	144 L. MAHIAS	FRA	GRT Yamaha Official WorldSSP Team	Yamaha YZF R6		1'54.906	0.484	0.484	7	159,062	261,5
3	16 J. CLUZEL	FRA	NRT	Yamaha YZF R6		1'54.970	0.548	0.064	7	158,974	274,1
4	64 F. CARICASULO	ITA	GRT Yamaha Official WorldSSP Team	Yamaha YZF R6		1'55.069	0.647	0.099	7	158,837	273,4
5	3 R. DE ROSA	ITA	MV Agusta Reparto Corse by Vamag	MV Agusta F3 675		1'55.201	0.779	0.132	7	158,655	268,7
6	81 L. STAPLEFORD	GBR	Profile Racing	Triumph Daytona 675		1'55.424	1.002	0.223	7	158,348	270,7
7	111 K. SMITH	GBR	GEMAR Team Lorini	Honda CBR600RR		1'55.719	1.297	0.295	7	157,945	273,4
8	11 S. CORTESE	GER	Kallio Racing	Yamaha YZF R6		1'55.770	1.348	0.051	7	157,875	263,4
9	32 S. MORAIS	POR	Kawasaki Puccetti Racing	Kawasaki ZX-6R		1'55.860	1.438	0.090	7	157,752	268,7
10	13 A. WEST	AUS	EAB antwest Racing	Kawasaki ZX-6R		1'55.941	1.519	0.081	7	157,642	259,6
11	36 T. GRADINGER	AUT	NRT	Yamaha YZF R6		1'55.957	1.535	0.016	7	157,620	274,8
12	86 A. BADOVINI	ITA	MV Agusta Reparto Corse by Vamag	MV Agusta F3 675		1'56.078	1.656	0.121	7	157,456	260,2
13	66 N. TUULI	FIN	CIA Landlord Insurance Honda	Honda CBR600RR		1'56.189	1.767	0.111	7	157,306	266,7
14	78 H. OKUBO	JPN	Kawasaki Puccetti Racing	Kawasaki ZX-6R		1'56.365	1.943	0.176	7	157,068	268,7
15	84 L. CRESSON	BEL	Kallio Racing	Yamaha YZF R6		1'56.523	2.101	0.158	7	156,855	266,0
16	47 R. HARTOG	NED	Team Hartog - Against Cancer	Kawasaki ZX-6R	ESS	1'56.853	2.431	0.330	7	156,412	262,8
17	22 E. LAHTI	FIN	Sterkman Motorsport by HRP	Suzuki GSX-R600	ESS	1'56.984	2.562	0.131	7	156,237	259,0
18	38 H. SOOMER	EST	Racedays	Honda CBR600RR		1'57.137	2.715	0.153	7	156,033	262,8
19	35 S. HILL	GBR	Profile Racing	Triumph Daytona 675		1'57.181	2.759	0.044	7	155,974	256,5
20	15 A. COPPOLA	ITA	GRT Yamaha Official WorldSSP Junior Team	Yamaha YZF R6	ESS	1'57.265	2.843	0.084	7	155,862	264,1
21	74 J. VAN SIKKELERUS	NED	GEMAR Team Lorini	Honda CBR600RR		1'57.367	2.945	0.102	7	155,727	258,4
22	6 C. PEROLARI	FRA	GMT94 Yamaha	Yamaha YZF R6		1'57.411	2.989	0.044	6	155,669	262,8
23	96 A. IRWIN	GBR	CIA Landlord Insurance Honda	Honda CBR600RR		1'57.597	3.175	0.186	7	155,422	257,8
24	77 W. TESSELS	NED	Chromeburner Wayne's Racingteam MitM	Kawasaki ZX-6R	ESS	1'57.677	3.255	0.080	6	155,317	265,4
25	10 N. CALERO	ESP	Orelac Racing VerdNatura	Kawasaki ZX-6R		1'57.756	3.334	0.079	6	155,212	258,4
26	83 L. EPIS	AUS	Team GoEleven Kawasaki	Kawasaki ZX-6R		1'57.948	3.526	0.192	7	154,960	268,0
27	65 M. CANDUCCI	ITA	Team GoEleven Kawasaki	Kawasaki ZX-6R		1'58.049	3.627	0.101	6	154,827	255,9
28	56 P. SEBESTYEN	HUN	SSP Hungary Racing	Kawasaki ZX-6R	ESS	1'58.388	3.966	0.339	7	154,384	263,4

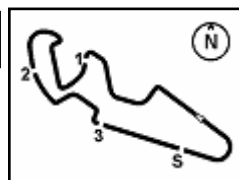
AIR	Humidity:	74%	Temp:	10°C
TRACK	Condition:	Dry	Temp:	13°C

Records	Pole (QP)	2015 J.Cluzel	1'53.138	161,550	Km/h
	Race (RC)	2015 P.Jacobsen	1'54.605	159,480	Km/h
	Circuit (QP)	2015 J.Cluzel	1'53.138	161,550	Km/h

15/04/2018 Start End The results are provisional until the end of the time limit for protests and appeals
 09:10 09:27 and the completion of the technical checks.

These data/results cannot be reproduced, stored and/or transmitted in whole or in part by any manner of electronic, mechanical, photocopying, recording, broadcasting or otherwise now known or herein after developed without the previous express consent by the copyright owner, except for reproduction in daily press and regular printed publications on sale to the public within 60 days of the event related to those data/results and always provided that copyright symbol appears together as follows below.

© DORNA WSBK ORGANIZATION Srl 2018



Spanish Round, 13-14-15 April 2018

World Supersport - Results Warm Up

Session Highlights

Local Time	No. Rider	Description
09.10.00		Start
09.10.10		WorldSSP Pit Intervention Time: 1min 11secs
09.12.38	38 H. SOOMER	On the Gravel - Re-Joined - Turn 1
09.13.29	96 A. IRWIN	Current Lap Cancelled - Exceeded Track Limits - Turn 11
09.14.26	64 F. CARICASULO	On the Gravel - Re-Joined - Turn 1
09.15.19	96 A. IRWIN	Current Lap Cancelled - Exceeded Track Limits - Turn 11
09.16.20	84 L. CRESSON	Current Lap Cancelled - Exceeded Track Limits - Turn 11
09.17.25	83 L. EPIS	Current Lap Cancelled - Exceeded Track Limits - Turn 11
09.20.07	16 J. CLUZEL	On the Gravel - Re-Joined - Turn 1
09.21.07	78 H. OKUBO	Current Lap Cancelled - Exceeded Track Limits - Turn 11
09.22.36	86 A. BADOVINI	On the Gravel - Re-Joined - Turn 1
09.23.07	144 L. MAHIAS	On the Gravel - Re-Joined - Turn 1
09.27.11		End Of Session

Fastest Laps Sequence

No. Rider	Nat	Team	Bike	Local Time	Time	Gap	Avg
13 A. WEST	AUS	EAB antwest Racing	Kawasaki ZX-6R	09:13'57.546	1'58.288		154,514
16 J. CLUZEL	FRA	NRT	Yamaha YZF R6	09:14'05.805	1'57.203	-1.085	155,945
81 L. STAPLEFORD	GBR	Profile Racing	Triumph Daytona 675	09:14'08.321	1'56.915	-0.288	156,329
111 K. SMITH	GBR	GEMAR Team Lorini	Honda CBR600RR	09:14'14.994	1'56.845	-0.070	156,423
21 R. KRUMMENACHER	SUI	BARDAHL Evan Bros. WorldSSP Team	Yamaha YZF R6	09:14'39.080	1'55.469	-1.376	158,287
144 L. MAHIAS	FRA	GRT Yamaha Official WorldSSP Team	Yamaha YZF R6	09:14'57.075	1'55.154	-0.315	158,720
21 R. KRUMMENACHER	SUI	BARDAHL Evan Bros. WorldSSP Team	Yamaha YZF R6	09:16'34.086	1'55.006	-0.148	158,924
144 L. MAHIAS	FRA	GRT Yamaha Official WorldSSP Team	Yamaha YZF R6	09:18'47.141	1'54.906	-0.100	159,062
21 R. KRUMMENACHER	SUI	BARDAHL Evan Bros. WorldSSP Team	Yamaha YZF R6	09:20'23.703	1'54.573	-0.333	159,524
21 R. KRUMMENACHER	SUI	BARDAHL Evan Bros. WorldSSP Team	Yamaha YZF R6	09:24'12.883	1'54.422	-0.151	159,735

Start 15/04/2018 09:10 End 09:27 The results are provisional until the end of the time limit for protests and appeals and the completion of the technical checks.

These data/results cannot be reproduced, stored and/or transmitted in whole or in part by any manner of electronic, mechanical, photocopying, recording, broadcasting or otherwise now known or herein after developed without the previous express consent by the copyright owner, except for reproduction in daily press and regular printed publications on sale to the public within 60 days of the event related to those data/results and always provided that copyright symbol appears together as follows below.

© DORNA WSBK ORGANIZATION Srl 2018

Spanish Round, 13-14-15 April 2018

World Supersport - Best Sectors & Speed Warm Up

MotorLand Aragon 5.077 m

BEST LAP			
1	21 R. KRUMMENACHER	Yamaha YZF R6	1'54.422
2	144 L. MAHIAS	Yamaha YZF R6	1'54.906
3	16 J. CLUZEL	Yamaha YZF R6	1'54.970
4	64 F. CARICASULO	Yamaha YZF R6	1'55.069
5	3 R. DE ROSA	MV Agusta F3 675	1'55.201
6	81 L. STAPLEFORD	Triumph Daytona 675	1'55.424
7	111 K. SMITH	Honda CBR600RR	1'55.719
8	11 S. CORTESE	Yamaha YZF R6	1'55.770
9	32 S. MORAIS	Kawasaki ZX-6R	1'55.860
10	13 A. WEST	Kawasaki ZX-6R	1'55.941
11	36 T. GRADINGER	Yamaha YZF R6	1'55.957
12	86 A. BADOVINI	MV Agusta F3 675	1'56.078
13	66 N. TUULI	Honda CBR600RR	1'56.189
14	78 H. OKUBO	Kawasaki ZX-6R	1'56.365
15	84 L. CRESSON	Yamaha YZF R6	1'56.523
16	47 R. HARTOG	Kawasaki ZX-6R	1'56.853
17	22 E. LAHTI	Suzuki GSX-R600	1'56.984
18	38 H. SOOMER	Honda CBR600RR	1'57.137
19	35 S. HILL	Triumph Daytona 675	1'57.181
20	15 A. COPPOLA	Yamaha YZF R6	1'57.265
21	74 J. VAN SIKKELERUS	Honda CBR600RR	1'57.367
22	6 C. PEROLARI	Yamaha YZF R6	1'57.411
23	96 A. IRWIN	Honda CBR600RR	1'57.597
24	77 W. TESSELS	Kawasaki ZX-6R	1'57.677
25	10 N. CALERO	Kawasaki ZX-6R	1'57.756
26	83 L. EPIS	Kawasaki ZX-6R	1'57.948
27	65 M. CANDUCCI	Kawasaki ZX-6R	1'58.049
28	56 P. SEBESTYEN	Kawasaki ZX-6R	1'58.388

SPEED			
1	36 T. GRADINGER	Yamaha YZF R6	274,8
2	16 J. CLUZEL	Yamaha YZF R6	274,1
3	64 F. CARICASULO	Yamaha YZF R6	273,4
4	111 K. SMITH	Honda CBR600RR	273,4
5	81 L. STAPLEFORD	Triumph Daytona 675	270,7
6	32 S. MORAIS	Kawasaki ZX-6R	268,7
7	78 H. OKUBO	Kawasaki ZX-6R	268,7
8	3 R. DE ROSA	MV Agusta F3 675	268,7
9	83 L. EPIS	Kawasaki ZX-6R	268,0
10	66 N. TUULI	Honda CBR600RR	266,7
11	84 L. CRESSON	Yamaha YZF R6	266,0
12	77 W. TESSELS	Kawasaki ZX-6R	265,4
13	21 R. KRUMMENACHER	Yamaha YZF R6	265,4
14	15 A. COPPOLA	Yamaha YZF R6	264,1
15	11 S. CORTESE	Yamaha YZF R6	263,4
16	56 P. SEBESTYEN	Kawasaki ZX-6R	263,4
17	47 R. HARTOG	Kawasaki ZX-6R	262,8
18	6 C. PEROLARI	Yamaha YZF R6	262,8
19	38 H. SOOMER	Honda CBR600RR	262,8
20	144 L. MAHIAS	Yamaha YZF R6	261,5
21	86 A. BADOVINI	MV Agusta F3 675	260,2
22	13 A. WEST	Kawasaki ZX-6R	259,6
23	22 E. LAHTI	Suzuki GSX-R600	259,0
24	74 J. VAN SIKKELERUS	Honda CBR600RR	258,4
25	10 N. CALERO	Kawasaki ZX-6R	258,4
26	96 A. IRWIN	Honda CBR600RR	257,8
27	35 S. HILL	Triumph Daytona 675	256,5
28	65 M. CANDUCCI	Kawasaki ZX-6R	255,9

SEG. 1			SEG. 2			SEG. 3			SEG. 4		
1	21 R. KRUMMENACHER	32.333	1	21 R. KRUMMENACHER	32.125	1	21 R. KRUMMENACHER	21.805	1	16 J. CLUZEL	27.883
2	144 L. MAHIAS	32.460	2	16 J. CLUZEL	32.178	2	144 L. MAHIAS	21.880	2	21 R. KRUMMENACHER	27.973
3	64 F. CARICASULO	32.544	3	64 F. CARICASULO	32.196	3	64 F. CARICASULO	21.910	3	3 R. DE ROSA	28.092
4	3 R. DE ROSA	32.567	4	144 L. MAHIAS	32.207	4	3 R. DE ROSA	21.968	4	111 K. SMITH	28.115
5	16 J. CLUZEL	32.648	5	81 L. STAPLEFORD	32.253	5	11 S. CORTESE	22.004	5	64 F. CARICASULO	28.134
6	111 K. SMITH	32.676	6	11 S. CORTESE	32.312	6	78 H. OKUBO	22.048	6	36 T. GRADINGER	28.161
7	81 L. STAPLEFORD	32.707	7	3 R. DE ROSA	32.369	7	66 N. TUULI	22.065	7	32 S. MORAIS	28.229
8	86 A. BADOVINI	32.766	8	13 A. WEST	32.424	8	81 L. STAPLEFORD	22.073	8	66 N. TUULI	28.249
9	32 S. MORAIS	32.770	9	111 K. SMITH	32.486	9	13 A. WEST	22.124	9	81 L. STAPLEFORD	28.252
10	13 A. WEST	32.823	10	86 A. BADOVINI	32.512	10	86 A. BADOVINI	22.150	10	144 L. MAHIAS	28.293
11	66 N. TUULI	32.854	11	36 T. GRADINGER	32.531	11	111 K. SMITH	22.150	11	84 L. CRESSON	28.310
12	36 T. GRADINGER	32.878	12	32 S. MORAIS	32.564	12	32 S. MORAIS	22.153	12	78 H. OKUBO	28.324
13	84 L. CRESSON	32.883	13	84 L. CRESSON	32.574	13	36 T. GRADINGER	22.203	13	11 S. CORTESE	28.399
14	11 S. CORTESE	32.892	14	66 N. TUULI	32.610	14	38 H. SOOMER	22.217	14	86 A. BADOVINI	28.421
15	78 H. OKUBO	33.013	15	47 R. HARTOG	32.739	15	16 J. CLUZEL	22.220	15	13 A. WEST	28.448
16	47 R. HARTOG	33.064	16	78 H. OKUBO	32.742	16	74 J. VAN SIKKELERUS	22.335	16	15 A. COPPOLA	28.484
17	22 E. LAHTI	33.073	17	35 S. HILL	32.749	17	15 A. COPPOLA	22.373	17	77 W. TESSELS	28.506
18	65 M. CANDUCCI	33.148	18	15 A. COPPOLA	32.767	18	96 A. IRWIN	22.380	18	47 R. HARTOG	28.521
19	6 C. PEROLARI	33.166	19	38 H. SOOMER	32.818	19	22 E. LAHTI	22.404	19	83 L. EPIS	28.564
20	10 N. CALERO	33.187	20	22 E. LAHTI	32.822	20	47 R. HARTOG	22.425	20	6 C. PEROLARI	28.613
21	74 J. VAN SIKKELERUS	33.192	21	65 M. CANDUCCI	32.934	21	35 S. HILL	22.441	21	22 E. LAHTI	28.627
22	35 S. HILL	33.211	22	74 J. VAN SIKKELERUS	32.936	22	10 N. CALERO	22.500	22	38 H. SOOMER	28.629
23	96 A. IRWIN	33.213	23	96 A. IRWIN	32.936	23	84 L. CRESSON	22.525	23	35 S. HILL	28.654
24	77 W. TESSELS	33.283	24	10 N. CALERO	32.957	24	65 M. CANDUCCI	22.533	24	96 A. IRWIN	28.736
25	38 H. SOOMER	33.293	25	6 C. PEROLARI	33.087	25	6 C. PEROLARI	22.545	25	10 N. CALERO	28.738
26	15 A. COPPOLA	33.325	26	77 W. TESSELS	33.097	26	56 P. SEBESTYEN	22.649	26	56 P. SEBESTYEN	28.765
27	83 L. EPIS	33.504	27	83 L. EPIS	33.125	27	83 L. EPIS	22.755	27	74 J. VAN SIKKELERUS	28.814
28	56 P. SEBESTYEN	33.737	28	56 P. SEBESTYEN	33.186	28	77 W. TESSELS	22.778	28	65 M. CANDUCCI	29.061

15/04/2018

These data/results cannot be reproduced, stored and/or transmitted in whole or in part by any manner of electronic, mechanical, photocopying, recording, broadcasting or otherwise now known or herein after developed without the previous express consent by the copyright owner, except for reproduction in daily press and regular printed publications on sale to the public within 60 days of the event related to those data/results and always provided that copyright symbol appears together as follows below.

© DORNA WSBK ORGANIZATION Srl 2018

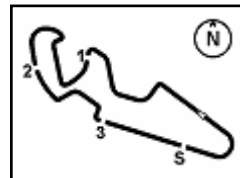
FICR PERUGIA TIMING



Official Tyre Supplier



Official Timekeeper



Spanish Round, 13-14-15 April 2018

World Supersport - Ideal Times Warm Up

No.	Rider	Nat	Bike	Seg. 1	Seg. 2	Seg. 3	Seg. 4	Ideal Time			
				Diff. 1	Diff. 2	Diff. 3	Diff. 4	Best Lap	Pos.	Diff.	
1	21 R. KRUMMENACHER	SUI	Yamaha YZF R6	32.333	32.125	21.805 0.166	27.973 0.020	1'54.236	1'54.422	1	0.186
2	64 F. CARICASULO	ITA	Yamaha YZF R6	32.544	32.196 0.229	21.910	28.134 0.056	1'54.784	1'55.069	4	0.285
3	144 L. MAHIAS	FRA	Yamaha YZF R6	32.460	32.207	21.880 0.010	28.293 0.056	1'54.840	1'54.906	2	0.066
4	16 J. CLUZEL	FRA	Yamaha YZF R6	32.648	32.178 0.018	22.220 0.008	27.883 0.015	1'54.929	1'54.970	3	0.041
5	3 R. DE ROSA	ITA	MV Agusta F3 675	32.567	32.369	21.968	28.092 0.205	1'54.996	1'55.201	5	0.205
6	81 L. STAPLEFORD	GBR	Triumph Daytona 675	32.707	32.253	22.073	28.252 0.139	1'55.285	1'55.424	6	0.139
7	111 K. SMITH	GBR	Honda CBR600RR	32.676	32.486 0.126	22.150	28.115 0.166	1'55.427	1'55.719	7	0.292
8	11 S. CORTESE	GER	Yamaha YZF R6	32.892 0.060	32.312 0.103	22.004	28.399	1'55.607	1'55.770	8	0.163
9	32 S. MORAIS	POR	Kawasaki ZX-6R	32.770	32.564 0.079	22.153	28.229 0.065	1'55.716	1'55.860	9	0.144
10	36 T. GRADINGER	AUT	Yamaha YZF R6	32.878	32.531 0.052	22.203 0.122	28.161 0.010	1'55.773	1'55.957	11	0.184
11	66 N. TUULI	FIN	Honda CBR600RR	32.854 0.064	32.610	22.065	28.249 0.347	1'55.778	1'56.189	13	0.411
12	13 A. WEST	AUS	Kawasaki ZX-6R	32.823 0.008	32.424 0.109	22.124 0.005	28.448	1'55.819	1'55.941	10	0.122
13	86 A. BADOVINI	ITA	MV Agusta F3 675	32.766 0.221	32.512	22.150 0.008	28.421	1'55.849	1'56.078	12	0.229
14	78 H. OKUBO	JPN	Kawasaki ZX-6R	33.013 0.238	32.742	22.048	28.324	1'56.127	1'56.365	14	0.238
15	84 L. CRESSON	BEL	Yamaha YZF R6	32.883	32.574 0.146	22.525 0.017	28.310 0.068	1'56.292	1'56.523	15	0.231
16	47 R. HARTOG	NED	Kawasaki ZX-6R	33.064 0.032	32.739 0.049	22.425	28.521 0.023	1'56.749	1'56.853	16	0.104
17	22 E. LAHTI	FIN	Suzuki GSX-R600	33.073	32.822	22.404	28.627 0.058	1'56.926	1'56.984	17	0.058
18	15 A. COPPOLA	ITA	Yamaha YZF R6	33.325 0.040	32.767	22.373	28.484 0.276	1'56.949	1'57.265	20	0.316
19	38 H. SOOMER	EST	Honda CBR600RR	33.293 0.180	32.818	22.217	28.629	1'56.957	1'57.137	18	0.180
20	35 S. HILL	GBR	Triumph Daytona 675	33.211	32.749 0.048	22.441	28.654 0.078	1'57.055	1'57.181	19	0.126
21	96 A. IRWIN	GBR	Honda CBR600RR	33.213 0.069	32.936	22.380	28.736 0.263	1'57.265	1'57.597	23	0.332
22	74 J. VAN SIKKELERUS	NED	Honda CBR600RR	33.192	32.936 0.090	22.335	28.814	1'57.277	1'57.367	21	0.090
23	10 N. CALERO	ESP	Kawasaki ZX-6R	33.187 0.127	32.957	22.500 0.177	28.738 0.070	1'57.382	1'57.756	25	0.374
24	6 C. PEROLARI	FRA	Yamaha YZF R6	33.166	33.087	22.545	28.613	1'57.411	1'57.411	22	
25	77 W. TESSELS	NED	Kawasaki ZX-6R	33.283	33.097	22.778 0.011	28.506 0.002	1'57.664	1'57.677	24	0.013
26	65 M. CANDUCCI	ITA	Kawasaki ZX-6R	33.148	32.934	22.533 0.373	29.061	1'57.676	1'58.049	27	0.373
27	83 L. EPIS	AUS	Kawasaki ZX-6R	33.504	33.125	22.755	28.564	1'57.948	1'57.948	26	
28	56 P. SEBESTYEN	HUN	Kawasaki ZX-6R	33.737	33.186	22.649 0.051	28.765	1'58.337	1'58.388	28	0.051
Overall Ideal Time				32.333	32.125	21.805	27.883	1'54.146			

15/04/2018

These data/results cannot be reproduced, stored and/or transmitted in whole or in part by any manner of electronic, mechanical, photocopying, recording, broadcasting or otherwise now known or herein after developed without the previous express consent by the copyright owner, except for reproduction in daily press and regular printed publications on sale to the public within 60 days of the event related to those data/results and always provided that copyright symbol appears together as follows below.

© DORNA WSBK ORGANIZATION Srl 2018

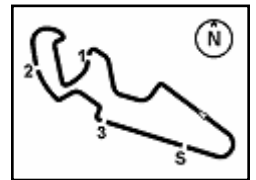
FICR PERUGIA TIMING



Official Tyre Supplier



Official Timekeeper



1° 21 R. KRUMMENACHER (1'54.422)							
Lap	Seg.1	Seg.2	Seg.3	Seg.4	Lap Time	km/h	Local Time
1		34.123	22.689	28.493	260,9	9:12'43.611	
2	32.825	32.449	22.026	28.169	1'55.469	262,8	9:14'39.080
3	32.493	32.435	21.929	28.149	1'55.006	262,1	9:16'34.086
4	32.386	32.511	22.001	28.146	1'55.044	263,4	9:18'29.130
5	32.527	32.224	21.849	27.973	1'54.573	265,4	9:20'23.703
6	32.420	32.402	21.805	28.131	1'54.758	261,5	9:22'18.461
7	32.333	32.125	21.971	27.993	1'54.422	263,4	9:24'12.883
8	32.494	32.349	21.974	28.067	1'54.884	264,1	9:26'07.767

2° 144 L. MAHIAS (1'54.906)							
Lap	Seg.1	Seg.2	Seg.3	Seg.4	Lap Time	km/h	Local Time
1		33.579	22.621	28.466	257,8	9:13'01.921	
2	32.482	32.499	21.880	28.293	1'55.154	259,0	9:14'57.075
3	32.471	32.272	22.023	28.394	1'55.160	259,0	9:16'52.235
4	32.460	32.207	21.890	28.349	1'54.906	260,2	9:18'47.141
5	32.588	32.369	22.047	28.384	1'55.388	259,6	9:20'42.529
6	32.719	32.511	22.159	28.376	1'55.765	261,5	9:22'38.294
7	42.033	33.437	22.635	28.945	2'07.050	256,5	9:24'45.344
8	34.106	33.638	23.259	35.212	2'06.215P	248,8	9:26'51.559

3° 16 J. CLUZEL (1'54.970)							
Lap	Seg.1	Seg.2	Seg.3	Seg.4	Lap Time	km/h	Local Time
1		34.825	23.739	28.502	267,3	9:12'08.602	
2	33.238	33.314	22.728	27.923	1'57.203	270,0	9:14'05.805
3	32.909	32.178	22.438	28.040	1'55.565	272,7	9:16'01.370
4	32.666	32.262	22.302	27.883	1'55.113	268,7	9:17'56.483
5	32.648	32.196	22.228	27.898	1'54.970	274,1	9:19'51.453
6	35.715	33.202	22.556	28.007	1'59.480	266,0	9:21'50.933
7	32.693	32.251	22.220	27.895	1'55.059	267,3	9:23'45.992
8	33.404	32.973	22.476	28.082	1'56.935	267,3	9:25'42.927

4° 64 F. CARICASULO (1'55.069)							
Lap	Seg.1	Seg.2	Seg.3	Seg.4	Lap Time	km/h	Local Time
1		33.947	23.174	28.394	272,0	9:12'07.024	
2	34.086	33.142	22.676	28.500	1'58.404	272,7	9:14'05.428
3	39.500	32.482	22.517	28.155	2'02.654	273,4	9:16'08.082
4	33.196	32.531	22.502	28.354	1'56.583	269,3	9:18'04.665
5	32.793	32.196	22.012	28.197	1'55.198	266,0	9:19'59.863
6	33.321	32.652	22.446	28.134	1'56.553	264,7	9:21'56.416
7	32.707	32.329	22.043	28.305	1'55.384	262,8	9:23'51.800
8	32.544	32.425	21.910	28.190	1'55.069	264,1	9:25'46.869

5° 3 R. DE ROSA (1'55.201)							
Lap	Seg.1	Seg.2	Seg.3	Seg.4	Lap Time	km/h	Local Time
1		35.843	23.755	28.957	259,0	9:12'30.528	
2	33.305	32.906	22.404	28.571	1'57.186	260,2	9:14'27.714
3	32.752	32.605	22.018	28.262	1'55.637	262,8	9:16'23.351
4	32.567	32.369	21.968	28.297	1'55.201	262,8	9:18'18.552
5	32.826	32.699	21.996	28.265	1'55.786	262,1	9:20'14.338
6	32.688	32.474	22.020	28.284	1'55.466	263,4	9:22'09.804
7	32.703	32.457	22.009	28.122	1'55.291	263,4	9:24'05.095
8	32.662	32.517	22.021	28.092	1'55.292	268,7	9:26'00.387

6° 81 L. STAPLEFORD (1'55.424)							
Lap	Seg.1	Seg.2	Seg.3	Seg.4	Lap Time	km/h	Local Time
1		34.049	23.286	28.657	260,2	9:12'11.406	
2	33.183	32.601	22.642	28.489	1'56.915	264,7	9:14'08.321
3	33.024	32.883	23.152	28.447	1'57.506	270,7	9:16'05.827
4	34.404	33.130	22.629	28.252	1'58.415	261,5	9:18'04.242
5	32.707	32.253	22.073	28.391	1'55.424	260,9	9:19'59.666
6	33.270	32.687	22.515	28.656	1'57.128	259,0	9:21'56.794

7	32.792	32.377	22.237	28.342	1'55.748	261,5	9:23'52.542
8	32.791	32.501	22.102	28.288	1'55.682	260,9	9:25'48.224

7° 111 K. SMITH (1'55.719)							
Lap	Seg.1	Seg.2	Seg.3	Seg.4	Lap Time	km/h	Local Time
1		34.786	23.138	28.854	261,5	9:12'18.149	
2	33.161	32.733	22.621	28.330	1'56.845	263,4	9:14'14.994
3	32.814	32.486	22.510	28.242	1'56.052	265,4	9:16'11.046
4	32.932	32.488	22.325	28.115	1'55.860	273,4	9:18'06.906
5	32.676	32.612	22.150	28.281	1'55.719	267,3	9:20'02.625
6	36.119	33.080	23.411	29.308	2'01.918	263,4	9:22'04.543
7	33.497	32.751	22.509	28.383	1'57.140	262,1	9:24'01.683
8	32.857	32.583	22.197	28.341	1'55.978	262,1	9:25'57.661

8° 11 S. CORTESE (1'55.770)							
Lap	Seg.1	Seg.2	Seg.3	Seg.4	Lap Time	km/h	Local Time
1		34.864	23.618	28.835	259,0	9:12'53.374	
2	33.386	32.606	22.324	28.449	1'56.765	261,5	9:14'50.139
3	33.305	32.517	22.126	28.506	1'56.454	260,9	9:16'46.593
4	32.948	32.385	22.014	28.706	1'56.053	260,9	9:18'42.646
5	32.974	33.152	22.773	28.746	1'57.645	259,6	9:20'40.291
6	33.029	32.312	22.020	28.418	1'55.779	261,5	9:22'36.070
7	32.892	32.402	22.114	28.445	1'55.853	262,1	9:24'31.923
8	32.952	32.415	22.004	28.399	1'55.770	263,4	9:26'27.693

9° 32 S. MORAIS (1'55.860)							
Lap	Seg.1	Seg.2	Seg.3	Seg.4	Lap Time	km/h	Local Time
1		35.042	23.739	28.733	269,3	9:12'06.761	
2	34.605	34.091	23.180	28.595	2'00.471	266,7	9:14'07.232
3	33.390	33.528	22.798	28.410	1'58.126	268,7	9:16'05.358
4	33.196	33.184	22.330	28.440	1'57.150	266,0	9:18'02.508
5	32.770	32.643	22.153	28.294	1'55.860	266,0	9:19'58.368
6	35.483	34.032	22.264	28.352	2'00.131	266,0	9:21'58.499
7	32.849	32.564	22.167	28.403	1'55.983	266,7	9:23'54.482
8	33.288	32.888	22.444	28.229	1'56.849	267,3	9:25'51.331

10° 13 A. WEST (1'55.941)							
Lap	Seg.1	Seg.2	Seg.3	Seg.4	Lap Time	km/h	Local Time
1		34.782	23.255	28.713	262,8	9:11'59.258	
2	33.936	33.061	22.708	28.583	1'58.288	259,6	9:13'57.546
3	33.161	32.733	22.339	28.527	1'56.760	259,0	9:15'54.306
4	32.875	32.517	22.273	28.539	1'56.204	259,6	9:17'50.510
5	32.823	32.424	22.241	28.490	1'55.978	259,0	9:19'46.488
6	32.870	32.544	22.174	28.474	1'56.062	258,4	9:21'42.550
7	32.831	32.533	22.129	28.448	1'55.941	259,0	9:23'38.491
8	32.922	32.522	22.124	28.472	1'56.040	259,6	9:25'34.531

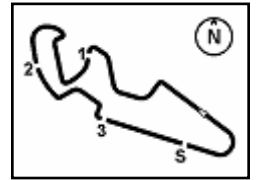
11° 36 T. GRADINGER (1'55.957)							
Lap	Seg.1	Seg.2	Seg.3	Seg.4	Lap Time	km/h	Local Time
1		35.687	24.030	28.773	266,0	9:12'06.448	
2	34.158	33.185	22.957	28.632	1'58.932	269,3	9:14'05.380
3	38.520	33.220	22.588	28.198	2'02.526	270,0	9:16'07.906
4	33.781	32.785	22.660	28.446	1'57.672	274,8	9:18'05.578
5	33.212	32.531	22.353	28.161	1'56.257	270,7	9:20'01.835
6	33.786	33.058	23.227	28.479	1'58.550	266,7	9:22'00.385
7	32.878	32.583	22.325	28.171	1'55.957	268,7	9:23'56.342
8	33.100	32.900	22.203	28.271	1'56.474	266,0	9:25'52.816

12° 86 A. BADOVINI (1'56.078)							
Lap	Seg.1	Seg.2	Seg.3	Seg.4	Lap Time	km/h	Local Time
1		34.594	23.010	29.410	254,7	9:12'34.141	
2	34.029	33.580	22.813	29.211	1'59.633	255,9	9:14'33.774
3	33.164	32.744	22.235	28.654	1'56.797	258,4	9:16'30.571
4	33.139	32.614	22.150	28.613	1'56.516	257,1	9:18'27.087

15/04/2018 P = Pits In/Out - C = Lap Time Cancelled

These data/results cannot be reproduced, stored and/or transmitted in whole or in part by any manner of electronic, mechanical, photocopying, recording, broadcasting or otherwise now known or herein after developed without the previous express consent by the copyright owner, except for reproduction in daily press and regular printed publications on sale to the public within 60 days of the event related to those data/results and always provided that copyright symbol appears together as follows below.

© DORNA WSBK ORGANIZATION Srl 2018



Spanish Round, 13-14-15 April 2018

World Supersport - Chronological Analysis Warm Up

MotorLand Aragon 5.077 m

2 / 3

5	32.987	32.512	22.158	28.421	1'56.078	259,6	9:20'23.165
6	32.766	32.570	22.312	28.583	1'56.231	260,2	9:22'19.396
7	38.393	34.041	23.921	29.374	2'05.729	248,3	9:24'25.125
8	33.352	33.137	23.108	35.611	2'05.208P	257,1	9:26'30.333

3	33.741	33.658	22.372	28.687	1'58.458	261,5	9:16'13.798
4	33.757	32.942	22.431	28.695	1'57.825	260,9	9:18'11.623
5	33.293	33.130	22.444	28.906	1'57.773	261,5	9:20'09.396
6	33.473	32.818	22.217	28.629	1'57.137	260,2	9:22'06.533
7	39.057	33.036	22.670	28.760	2'03.523	259,6	9:24'10.056
8	33.299	33.023	22.230	28.719	1'57.271	259,6	9:26'07.327

13° 66 N. TUULI (1'56.189)							
Lap	Seg.1	Seg.2	Seg.3	Seg.4	Lap Time	km/h	Local Time
1		34.017	23.236	28.681		268,0	9:12'11.634
2	33.340	32.940	22.289	28.461	1'57.030	264,7	9:14'08.664
3	33.349	32.674	22.954	29.750	1'58.727	250,0	9:16'07.391
4	33.136	33.533	22.772	28.249	1'57.690	266,7	9:18'05.081
5	33.132	32.722	22.325	28.544	1'56.723	260,9	9:20'01.804
6	33.088	32.656	22.107	28.356	1'56.207	264,1	9:21'58.011
7	32.854	32.805	22.108	28.598	1'56.365	262,1	9:23'54.376
8	32.918	32.610	22.065	28.596	1'56.189	260,9	9:25'50.565

19° 35 S. HILL (1'57.181)							
Lap	Seg.1	Seg.2	Seg.3	Seg.4	Lap Time	km/h	Local Time
1		34.422	23.359	29.575		251,2	9:12'19.352
2	33.696	33.205	22.787	29.035	1'58.723	256,5	9:14'18.075
3	33.650	33.717	23.081	29.020	1'59.468	256,5	9:16'17.543
4	33.358	32.935	22.611	28.654	1'57.558	256,5	9:18'15.101
5	35.698	34.539	22.892	28.954	2'02.083	254,7	9:20'17.184
6	33.211	32.797	22.441	28.732	1'57.181	254,7	9:22'14.365
7	34.745	33.308	22.828	28.784	1'59.665	255,3	9:24'14.030
8	33.271	32.749	22.620	28.686	1'57.326	255,3	9:26'11.356

14° 78 H. OKUBO (1'56.365)							
Lap	Seg.1	Seg.2	Seg.3	Seg.4	Lap Time	km/h	Local Time
1		35.693	24.708	29.132		262,8	9:12'02.921
2	33.729	33.238	22.521	28.823	1'58.311	262,8	9:14'01.232
3	33.071	32.913	22.279	28.670	1'56.933	263,4	9:15'58.165
4	33.048	32.780	22.236	28.474	1'56.538	265,4	9:17'54.703
5	33.109	32.869	22.321	28.442	1'56.741	268,7	9:19'51.444
6	33.398	34.568	23.882	28.454	2'00.302C	266,0	9:21'51.746
7	33.251	32.742	22.048	28.324	1'56.365	268,7	9:23'48.111
8	33.013	32.790	22.314	28.624	1'56.741	264,1	9:25'44.852

20° 15 A. COPPOLA (1'57.265)							
Lap	Seg.1	Seg.2	Seg.3	Seg.4	Lap Time	km/h	Local Time
1		36.768	24.043	29.272		261,5	9:12'09.646
2	33.791	33.148	22.780	28.643	1'58.362	261,5	9:14'08.008
3	34.156	34.704	23.693	28.646	2'01.199	261,5	9:16'09.207
4	33.325	33.010	23.008	28.484	1'57.827	264,1	9:18'07.034
5	38.548	33.286	23.046	28.891	2'03.771	257,8	9:20'10.805
6	33.325	32.909	22.452	28.770	1'57.456	257,8	9:22'08.261
7	47.246	37.058	23.370	28.872	2'16.546	255,9	9:24'24.807
8	33.365	32.767	22.373	28.760	1'57.265	258,4	9:26'22.072

15° 84 L. CRESSON (1'56.523)							
Lap	Seg.1	Seg.2	Seg.3	Seg.4	Lap Time	km/h	Local Time
1		35.467	24.041	28.762		266,0	9:12'54.100
2	33.626	33.292	23.076	28.565	1'58.559	266,0	9:14'52.659
3	33.891	34.099	34.357	30.196	2'12.543C	246,0	9:17'05.202
4	33.605	32.899	22.842	28.565	1'57.911	265,4	9:19'03.113
5	33.168	32.860	22.574	28.531	1'57.133	264,7	9:21'00.246
6	32.883	32.720	22.542	28.378	1'56.523	265,4	9:22'56.769
7	33.002	32.574	22.562	28.406	1'56.544	265,4	9:24'53.313
8	33.235	32.680	22.525	28.310	1'56.750	266,0	9:26'50.063

21° 74 J. VAN SIKKELERUS (1'57.367)							
Lap	Seg.1	Seg.2	Seg.3	Seg.4	Lap Time	km/h	Local Time
1		34.664	23.021	28.877		259,0	9:12'18.846
2	34.804	32.936	22.993	28.899	1'59.632	258,4	9:14'18.478
3	33.438	33.192	22.492	28.923	1'58.045	256,5	9:16'16.523
4	33.389	33.040	22.522	28.935	1'57.886	255,3	9:18'14.409
5	40.935	34.578	23.458	29.100	2'08.071	251,7	9:20'22.480
6	35.463	33.386	22.753	28.982	2'00.584	254,1	9:22'23.064
7	33.325	33.111	22.371	28.822	1'57.629	254,7	9:24'20.693
8	33.192	33.026	22.335	28.814	1'57.367	255,3	9:26'18.060

16° 47 R. HARTOG (1'56.853)							
Lap	Seg.1	Seg.2	Seg.3	Seg.4	Lap Time	km/h	Local Time
1		33.985	24.006	28.993		261,5	9:11'58.692
2	34.783	33.129	22.876	28.521	1'59.309	262,8	9:13'58.001
3	33.347	32.862	22.628	28.571	1'57.408	260,9	9:15'55.409
4	33.242	32.852	22.608	28.707	1'57.409	260,9	9:17'52.818
5	33.096	32.788	22.425	28.544	1'56.853	260,2	9:19'49.671
6	33.064	32.739	22.464	28.600	1'56.867	260,2	9:21'46.538
7	33.296	33.442	22.786	28.826	1'58.350	259,6	9:23'44.888
8	33.272	33.046	22.543	28.677	1'57.538	260,9	9:25'42.426

22° 6 C. PEROLARI (1'57.411)							
Lap	Seg.1	Seg.2	Seg.3	Seg.4	Lap Time	km/h	Local Time
1		34.902	23.472	29.020		260,9	9:12'07.350
2	34.118	33.701	22.997	28.730	1'59.546	262,8	9:14'06.896
3	33.436	33.267	22.849	28.837	1'58.389	257,1	9:16'05.285
4	33.866	36.323	22.891	34.453	2'07.533P	257,1	9:18'12.818
5	1'54.154	33.362	22.569	28.700	3'18.785P	254,7	9:21'31.603
6	33.166	33.087	22.545	28.613	1'57.411	254,1	9:23'29.014
7	33.232	33.165	22.722	28.720	1'57.839	255,9	9:25'26.853

17° 22 E. LAHTI (1'56.984)							
Lap	Seg.1	Seg.2	Seg.3	Seg.4	Lap Time	km/h	Local Time
1		34.776	24.167	29.733		250,0	9:11'59.047
2	33.755	33.722	23.265	28.872	1'59.614	259,0	9:13'58.661
3	33.337	33.081	22.782	28.675	1'57.875	256,5	9:15'56.536
4	33.136	32.971	22.773	28.813	1'57.693	255,9	9:17'54.229
5	33.100	32.981	22.409	28.627	1'57.117	256,5	9:19'51.346
6	33.653	33.826	23.032	29.392	1'59.903	243,2	9:21'51.249
7	33.073	32.822	22.404	28.685	1'56.984	257,8	9:23'48.233
8	33.379	33.127	22.485	28.840	1'57.831	256,5	9:25'46.064

23° 96 A. IRWIN (1'57.597)							
Lap	Seg.1	Seg.2	Seg.3	Seg.4	Lap Time	km/h	Local Time
1		35.413	23.869	29.426		259,0	9:12'00.986
2	35.874	34.364	23.180	29.060	2'02.478C	254,1	9:14'03.464
3	33.393	33.526	22.781	28.746	1'58.446C	257,8	9:16'01.910
4	33.213	33.164	22.740	28.736	1'57.853	257,8	9:17'59.763
5	33.333	33.160	22.527	28.850	1'57.870	256,5	9:19'57.633
6	34.208	34.946	22.588	28.936	2'00.678	255,3	9:21'58.311
7	33.282	32.936	22.380	28.999	1'57.597	254,7	9:23'55.908
8	33.385	33.062	22.600	28.854	1'57.901	255,9	9:25'53.809

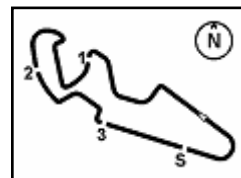
18° 38 H. SOOMER (1'57.137)							
Lap	Seg.1	Seg.2	Seg.3	Seg.4	Lap Time	km/h	Local Time
1		35.983	23.252	28.912		262,8	9:12'07.816
2	41.936	33.864	22.713	29.011	2'07.524	262,8	9:14'15.340

24° 77 W. TESSELS (1'57.677)							
Lap	Seg.1	Seg.2	Seg.3	Seg.4	Lap Time	km/h	Local Time
1		35.562	24.681	28.983		264,7	9:12'02.981

15/04/2018 P = Pits In/Out - C = Lap Time Cancelled

These data/results cannot be reproduced, stored and/or transmitted in whole or in part by any manner of electronic, mechanical, photocopying, recording, broadcasting or otherwise now known or herein after developed without the previous express consent by the copyright owner, except for reproduction in daily press and regular printed publications on sale to the public within 60 days of the event related to those data/results and always provided that copyright symbol appears together as follows below.

© DORNA WSBK ORGANIZATION Srl 2018



Spanish Round, 13-14-15 April 2018

World Supersport - Chronological Analysis Warm Up

2	34.266	33.574	23.181	28.763	1'59.784	262,8	9:14'02.765
3	33.848	33.421	22.778	28.506	1'58.553	262,8	9:16'01.318
4	33.535	33.138	22.847	28.592	1'58.112	261,5	9:17'59.430
5	33.283	33.097	22.789	28.508	1'57.677	261,5	9:19'57.107
6	42.284	33.259	23.349	28.746	2'07.638	265,4	9:22'04.745
7	33.571	33.462	30.604	39.247	2'16.884P	229,3	9:24'21.629

25° 10 N. CALERO (1'57.756)							
Lap	Seg.1	Seg.2	Seg.3	Seg.4	Lap Time	km/h	Local Time
1		35.548	23.947	28.833		259,6	9:12'30.767
2	33.802	33.192	22.601	28.751	1'58.346	258,4	9:14'29.113
3	33.187	33.169	22.684	28.837	1'57.877	256,5	9:16'26.990
4	38.176	33.935	22.500	28.738	2'03.349	256,5	9:18'30.339
5	39.514	35.669	23.738	37.248	2'16.169P	216,9	9:20'46.508
6	2'08.939	36.915	24.193	29.004	3'39.051P	257,1	9:24'25.559
7	33.314	32.957	22.677	28.808	1'57.756	257,8	9:26'23.315

26° 83 L. EPIS (1'57.948)							
Lap	Seg.1	Seg.2	Seg.3	Seg.4	Lap Time	km/h	Local Time
1		34.814	23.598	29.155		257,8	9:12'05.502
2	35.391	33.982	22.797	28.635	2'00.805	262,1	9:14'06.307
3	34.297	33.447	23.153	28.743	1'59.640	268,0	9:16'05.947
4	33.530	33.293	22.974	28.847	1'58.644C	258,4	9:18'04.591
5	33.504	33.125	22.755	28.564	1'57.948	262,1	9:20'02.539
6	34.470	33.996	23.063	28.889	2'00.418	258,4	9:22'02.957
7	34.064	33.368	22.777	28.894	1'59.103	259,0	9:24'02.060
8	33.717	33.263	22.855	28.759	1'58.594	259,0	9:26'00.654

27° 65 M. CANDUCCI (1'58.049)							
Lap	Seg.1	Seg.2	Seg.3	Seg.4	Lap Time	km/h	Local Time
1		34.102	23.514	29.258		258,4	9:12'12.417
2	33.841	33.117	22.906	29.067	1'58.931	254,7	9:14'11.348
3	33.908	33.205	22.823	29.085	1'59.021	255,9	9:16'10.369
4	33.148	32.934	22.906	29.061	1'58.049	255,9	9:18'08.418
5	33.970	33.687	23.216	36.015	2'06.888P	251,7	9:20'15.306
6	1'26.023	33.247	22.940	29.128	2'51.338P	250,6	9:23'06.644
7	33.221	32.987	22.533	29.354	1'58.095	249,4	9:25'04.739

28° 56 P. SEBESTYEN (1'58.388)							
Lap	Seg.1	Seg.2	Seg.3	Seg.4	Lap Time	km/h	Local Time
1		34.776	23.711	29.411		255,9	9:12'00.810
2	37.816	34.012	23.459	29.281	2'04.568	258,4	9:14'05.378
3	34.583	33.619	23.260	29.025	2'00.487	263,4	9:16'05.865
4	34.027	33.486	23.304	28.872	1'59.689	255,9	9:18'05.554
5	33.879	33.551	22.789	28.899	1'59.118	258,4	9:20'04.672
6	33.883	33.274	23.168	29.121	1'59.446	257,8	9:22'04.118
7	33.766	33.859	22.649	28.926	1'59.200	259,0	9:24'03.318
8	33.737	33.186	22.700	28.765	1'58.388	260,2	9:26'01.706

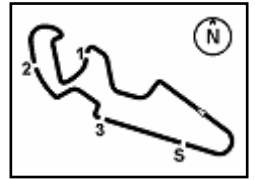
15/04/2018

P = Pits In/Out - C = Lap Time Cancelled

These data/results cannot be reproduced, stored and/or transmitted in whole or in part by any manner of electronic, mechanical, photocopying, recording, broadcasting or otherwise now known or herein after developed without the previous express consent by the copyright owner, except for reproduction in daily press and regular printed publications on sale to the public within 60 days of the event related to those data/results and always provided that copyright symbol appears together as follows below.

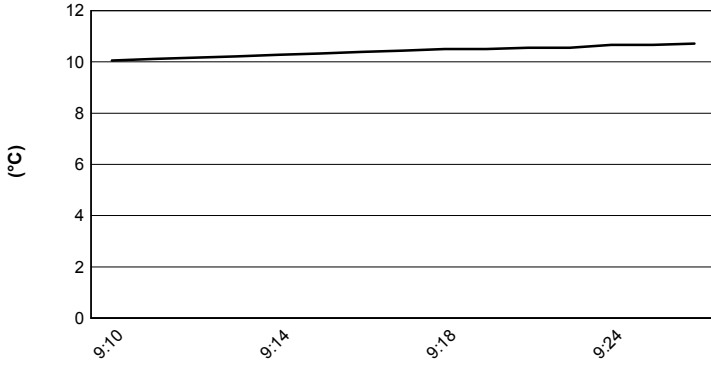
© DORNA WSBK ORGANIZATION Srl 2018



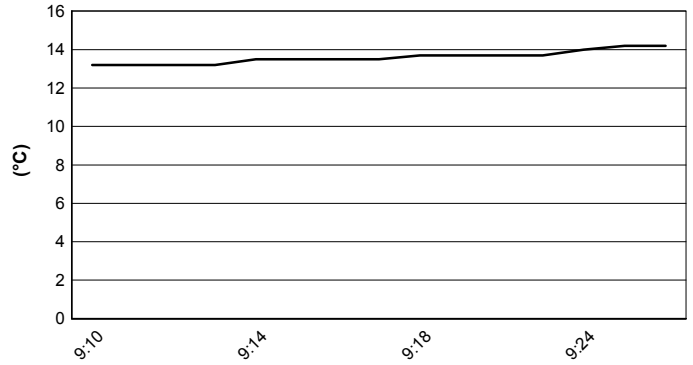


Spanish Round, 13-14-15 April 2018
World Supersport - Weather Report Warm Up
 Session started 09:10 - Session ended 9:27

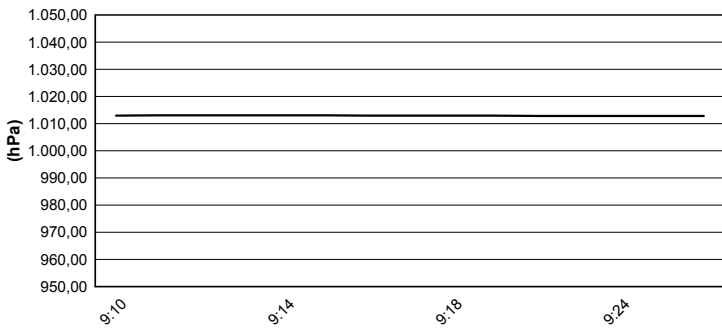
Air Temperature



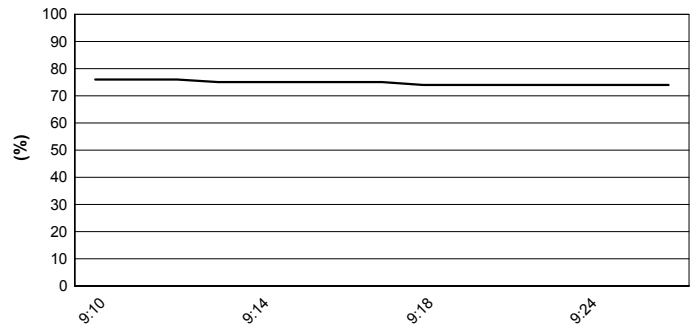
Track Temperature



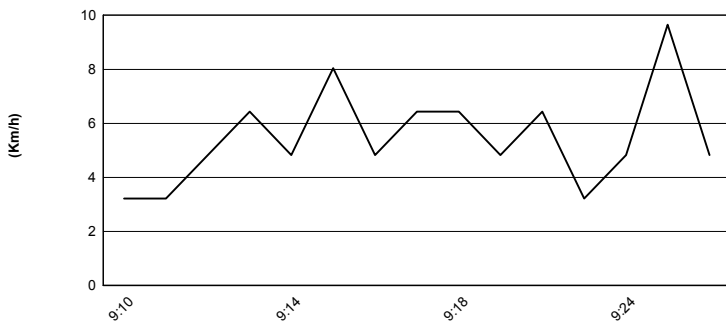
Air Pressure



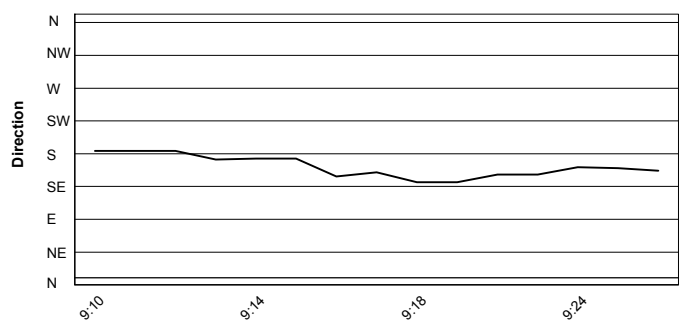
Humidity



Wind Speed



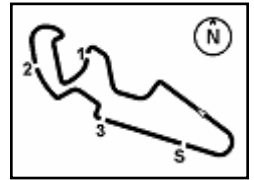
Wind Direction



15/04/2018

These data/results cannot be reproduced, stored and/or transmitted in whole or in part by any manner of electronic, mechanical, photocopying, recording, broadcasting or otherwise now known or herein after developed without the previous express consent by the copyright owner, except for reproduction in daily press and regular printed publications on sale to the public within 60 days of the event related to those data/results and always provided that copyright symbol appears together as follows below.

© DORNA WSBK ORGANIZATION Srl 2018



MotorLand Aragon 5.077 m

Spanish Round, 13-14-15 April 2018

World Supersport - Starting Grid

16 Laps x 5,077 km = 81,232 km

Pos	Number	Name	Team	Time	Class
1	11	CORTESE S.	Yamaha	1'53.567	SP2
2	3	DE ROSA R.	MV Agusta	1'54.069	SP2
3	32	MORAIS S.	Kawasaki	1'54.485	SP2
4	78	OKUBO H.	Kawasaki	1'54.987	SP2
5	66	TUULI N.	Honda	1'55.127	SP1
6	47	HARTOG R.	Kawasaki	1'55.529	SP1
7	22	LAHTI E.	Suzuki	1'56.224	SP1
8	38	SOOMER H.	Honda	1'56.666	SP1
9	77	TESSELS W.	Kawasaki	1'57.390	SP1
10	56	SEBESTYEN P.	Kawasaki	1'58.506	SP1
	64	CARICASULO F.	Yamaha	1'53.648	SP2
	144	MAHIAS L.	Yamaha	1'53.589	SP2
	21	KRUMMENACHER R.	Yamaha	1'54.174	SP2
	81	STAPLEFORD L.	Triumph	1'54.518	SP2
	111	SMITH K.	Honda	1'55.139	SP2
	36	GRADINGER T.	Yamaha	1'55.234	SP1
	35	HILL S.	Triumph	1'56.064	SP1
	15	COPPOLA A.	Yamaha	1'56.295	SP1
	74	VAN SIKKELERUS J.	Honda	1'56.699	SP1
	96	IRWIN A.	Honda	1'57.806	SP1
	16	CLUZEL J.	Yamaha	1'54.421	SP2
	86	BADOVINI A.	MV Agusta	1'54.849	SP2
	65	CANDUCCI M.	Kawasaki	1'55.822	SP2
	13	WEST A.	Kawasaki	1'55.413	SP1
	10	CALERO N.	Kawasaki	1'56.124	SP1
	84	CRESSON L.	Yamaha	1'56.341	SP1
	6	PEROLARI C.	Yamaha	1'57.267	SP1
	83	EPIS L.	Kawasaki	1'57.849	SP1

15/04/2018 Jury President

..... Race Director

