

PATA Italian Round, 11-12-13 May 2018

World Supersport - Free Practices Combined Results

Imola Circuit 4.936 m

No.	Rider	Nat	Team	Bike	Class	FP1	FP2	Time	Gap	Rel.	Avg Laps
1	64 F. CARICASULO	ITA	GRT Yamaha Official WorldSSP Team	Yamaha YZF R6		1'51.442	1'51.190	1'51.190			159,813 42
2	144 L. MAHIAS	FRA	GRT Yamaha Official WorldSSP Team	Yamaha YZF R6		1'51.241	1'51.905	1'51.241	0.051	0.051	159,740 31
3	11 S. CORTESE	GER	Kallio Racing	Yamaha YZF R6		1'52.164	1'51.375	1'51.375	0.185	0.134	159,547 44
4	16 J. CLUZEL	FRA	NRT	Yamaha YZF R6		1'51.730	1'51.448	1'51.448	0.258	0.073	159,443 33
5	54 K. SOFUOGLU	TUR	Kawasaki Puccetti Racing	Kawasaki ZX-6R		1'53.235	1'51.877	1'51.877	0.687	0.429	158,832 34
6	3 R. DE ROSA	ITA	MV Agusta Reparto Corse by Vomag	MV Agusta F3 675		1'52.850	1'51.882	1'51.882	0.692	0.005	158,824 39
7	81 L. STAPLEFORD	GBR	Profile Racing	Triumph Daytona 675		1'52.378	1'51.956	1'51.956	0.766	0.074	158,719 37
8	86 A. BADOVINI	ITA	MV Agusta Reparto Corse by Vomag	MV Agusta F3 675		1'52.019	1'52.021	1'52.019	0.829	0.063	158,630 36
9	78 H. OKUBO	JPN	Kawasaki Puccetti Racing	Kawasaki ZX-6R		1'52.633	1'52.129	1'52.129	0.939	0.110	158,475 37
10	21 R. KRUMMENACHER	SUI	BARDAHL Evan Bros. WorldSSP Team	Yamaha YZF R6		1'52.578	1'52.148	1'52.148	0.958	0.019	158,448 26
11	111 K. SMITH	GBR	GEMAR Team Lorini	Honda CBR600RR		1'52.237	1'53.286	1'52.237	1.047	0.089	158,322 24
12	47 R. HARTOG	NED	Team Hartog - Against Cancer	Kawasaki ZX-6R	ESS	1'53.605	1'52.300	1'52.300	1.110	0.063	158,233 38
13	66 N. TUULI	FIN	CIA Landlord Insurance Honda	Honda CBR600RR		1'53.190	1'52.390	1'52.390	1.200	0.090	158,107 27
14	53 N. MORRENTINO	ITA	Renzi Corse	Kawasaki ZX-6R		1'53.219	1'52.405	1'52.405	1.215	0.015	158,085 32
15	63 D. STIRPE	ITA	Extreme Racing BARDAHL	MV Agusta F3 675		1'52.890	1'52.459	1'52.459	1.269	0.054	158,010 33
16	55 M. ROCCOLI	ITA	G.A.S. Racing Team	Yamaha YZF R6		1'53.307	1'53.016	1'53.016	1.826	0.557	157,231 32
17	84 L. CRESSON	BEL	Kallio Racing	Yamaha YZF R6		1'53.574	1'53.114	1'53.114	1.924	0.098	157,095 34
18	13 A. WEST	AUS	EAB antwest Racing	Kawasaki ZX-6R		1'53.385	1'53.120	1'53.120	1.930	0.006	157,086 33
19	38 H. SOOMER	EST	Racedays	Honda CBR600RR		1'53.264	1'53.823	1'53.264	2.074	0.144	156,887 36
20	36 T. GRADINGER	AUT	NRT	Yamaha YZF R6		1'53.574	1'53.383	1'53.383	2.193	0.119	156,722 35
21	60 L. GABELLINI	ITA	G.A.S. Racing Team	Yamaha YZF R6		1'54.666	1'53.476	1'53.476	2.286	0.093	156,593 40
22	10 N. CALERO	ESP	Orelac Racing VerdNatura	Kawasaki ZX-6R		1'55.176	1'53.897	1'53.897	2.707	0.421	156,015 38
23	35 S. HILL	GBR	Profile Racing	Triumph Daytona 675		1'54.604	1'54.138	1'54.138	2.948	0.241	155,685 36
24	22 E. LAHTI	FIN	Sterkman Motorsport by HRP	Suzuki GSX-R600	ESS	1'55.126	1'54.247	1'54.247	3.057	0.109	155,537 33
25	77 W. TESSELS	NED	Chromeburner Wayne's Racingteam MTM	Kawasaki ZX-6R	ESS	1'54.845	1'54.405	1'54.405	3.215	0.158	155,322 41
26	65 M. CANDUCCI	ITA	Team GoEleven Kawasaki	Kawasaki ZX-6R		1'54.609	1'55.090	1'54.609	3.419	0.204	155,045 34
27	96 A. IRWIN	GBR	CIA Landlord Insurance Honda	Honda CBR600RR		1'55.863	1'54.724	1'54.724	3.534	0.115	154,890 41
28	52 M. MALONE	ITA	Team GREENSPEED	Kawasaki ZX-6R		1'55.136	1'54.759	1'54.759	3.569	0.035	154,843 33
29	15 A. COPPOLA	ITA	GRT Yamaha Official WorldSSP Junior Team	Yamaha YZF R6	ESS	1'55.979	1'54.874	1'54.874	3.684	0.115	154,688 36
30	56 P. SEBESTYEN	HUN	SSP Hungary Racing	Kawasaki ZX-6R	ESS	1'56.618	1'54.897	1'54.897	3.707	0.023	154,657 26
31	74 J. VAN SIKKELERUS	NED	GEMAR Team Lorini	Honda CBR600RR		1'57.962	1'55.443	1'55.443	4.253	0.546	153,925 25
32	34 J. ITURRIOZ	ARG	Team GoEleven Kawasaki	Kawasaki ZX-6R		1'56.579	1'55.593	1'55.593	4.403	0.150	153,726 38

11/05/2018

These data/results cannot be reproduced, stored and/or transmitted in whole or in part by any manner of electronic, mechanical, photocopying, recording, broadcasting or otherwise now known or herein after developed without the previous express consent by the copyright owner, except for reproduction in daily press and regular printed publications on sale to the public within 60 days of the event related to those data/results and always provided that copyright symbol appears together as follows below.

© DORNA WSBK ORGANIZATION Srl 2018

FIAT PERUGIA TIMING



Official Tyre Supplier



Official Timekeeper

PATA Italian Round, 11-12-13 May 2018

World Supersport - Results Free Practice 2nd Session

Imola Circuit 4.936 m

1 / 3

No.	Rider	Nat	Team	Bike	Class	Time	Gap	Rel.	Laps	Speed	
										Avg	Max
1	64 F. CARICASULO	ITA	GRT Yamaha Official WorldSSP Team	Yamaha YZF R6		1'51.190			22	159,813	250,7
2	11 S. CORTESE	GER	Kallio Racing	Yamaha YZF R6		1'51.375	0.185	0.185	20	159,547	250,7
3	16 J. CLUZEL	FRA	NRT	Yamaha YZF R6		1'51.448	0.258	0.073	18	159,443	252,5
4	54 K. SOFUOGLU	TUR	Kawasaki Puccetti Racing	Kawasaki ZX-6R		1'51.877	0.687	0.429	18	158,832	250,2
5	3 R. DE ROSA	ITA	MV Agusta Reparto Corse by Vamag	MV Agusta F3 675		1'51.882	0.692	0.005	21	158,824	248,4
6	144 L. MAHIAS	FRA	GRT Yamaha Official WorldSSP Team	Yamaha YZF R6		1'51.905	0.715	0.023	12	158,792	248,4
7	81 L. STAPLEFORD	GBR	Profile Racing	Triumph Daytona 675		1'51.956	0.766	0.051	22	158,719	243,4
8	86 A. BADOVINI	ITA	MV Agusta Reparto Corse by Vamag	MV Agusta F3 675		1'52.021	0.831	0.065	19	158,627	244,5
9	78 H. OKUBO	JPN	Kawasaki Puccetti Racing	Kawasaki ZX-6R		1'52.129	0.939	0.108	17	158,475	250,7
10	21 R. KRUMMENACHER	SUI	BARDAHL Evan Bros. WorldSSP Team	Yamaha YZF R6		1'52.148	0.958	0.019	9	158,448	251,9
11	47 R. HARTOG	NED	Team Hartog - Against Cancer	Kawasaki ZX-6R	ESS	1'52.300	1.110	0.152	18	158,233	249,0
12	66 N. TUULI	FIN	CIA Landlord Insurance Honda	Honda CBR600RR		1'52.390	1.200	0.090	13	158,107	245,6
13	53 N. MORRENTINO	ITA	Renzi Corse	Kawasaki ZX-6R		1'52.405	1.215	0.015	17	158,085	244,5
14	63 D. STIRPE	ITA	Extreme Racing BARDAHL	MV Agusta F3 675		1'52.459	1.269	0.054	16	158,010	248,4
15	55 M. ROCCOLI	ITA	G.A.S. Racing Team	Yamaha YZF R6		1'53.016	1.826	0.557	15	157,231	244,0
16	84 L. CRESSON	BEL	Kallio Racing	Yamaha YZF R6		1'53.114	1.924	0.098	16	157,095	253,7
17	13 A. WEST	AUS	EAB antwest Racing	Kawasaki ZX-6R		1'53.120	1.930	0.006	15	157,086	247,3
18	111 K. SMITH	GBR	GEMAR Team Lorini	Honda CBR600RR		1'53.286	2.096	0.166	10	156,856	246,2
19	36 T. GRADINGER	AUT	NRT	Yamaha YZF R6		1'53.383	2.193	0.097	17	156,722	250,7
20	60 L. GABELLINI	ITA	G.A.S. Racing Team	Yamaha YZF R6		1'53.476	2.286	0.093	20	156,593	241,2
21	38 H. SOOMER	EST	Racedays	Honda CBR600RR		1'53.823	2.633	0.347	16	156,116	245,1
22	10 N. CALERO	ESP	Orelac Racing VerdNatura	Kawasaki ZX-6R		1'53.897	2.707	0.074	19	156,015	244,5
23	35 S. HILL	GBR	Profile Racing	Triumph Daytona 675		1'54.138	2.948	0.241	17	155,685	241,2
24	22 E. LAHTI	FIN	Sterkman Motorsport by HRP	Suzuki GSX-R600	ESS	1'54.247	3.057	0.109	16	155,537	245,6
25	77 W. TESSELS	NED	Chromeburner Wayne's Racingteam MfM	Kawasaki ZX-6R	ESS	1'54.405	3.215	0.158	20	155,322	244,5
26	96 A. IRWIN	GBR	CIA Landlord Insurance Honda	Honda CBR600RR		1'54.724	3.534	0.319	20	154,890	241,8
27	52 M. MALONE	ITA	Team GREENSPEED	Kawasaki ZX-6R		1'54.759	3.569	0.035	17	154,843	246,2
28	15 A. COPPOLA	ITA	GRT Yamaha Official WorldSSP Junior Team	Yamaha YZF R6	ESS	1'54.874	3.684	0.115	17	154,688	241,8
29	56 P. SEBESTYEN	HUN	SSP Hungary Racing	Kawasaki ZX-6R	ESS	1'54.897	3.707	0.023	17	154,657	242,3
30	65 M. CANDUCCI	ITA	Team GoEleven Kawasaki	Kawasaki ZX-6R		1'55.090	3.900	0.193	18	154,397	241,8
31	74 J. VAN SIKKELERUS	NED	GEMAR Team Lorini	Honda CBR600RR		1'55.443	4.253	0.353	18	153,925	239,1
32	34 J. ITURRIOZ	ARG	Team GoEleven Kawasaki	Kawasaki ZX-6R		1'55.593	4.403	0.150	19	153,726	239,6

Qualifying Lap Time (107% of 1'51.190): 1'58.974

AIR	Humidity:	48%	Temp:	26°C
TRACK	Condition:	Dry	Temp:	40°C

Records	Pole (QP2)	2013 S.Lowes	1'50.404	160,950	Km/h
	Race (RC)	2015 J.Cluzel	1'51.101	159,940	Km/h
	Circuit (QP2)	2013 S.Lowes	1'50.404	160,950	Km/h

Start 11/05/2018 15:00 End 15:52 The results are provisional until the end of the time limit for protests and appeals and the completion of the technical checks.

These data/results cannot be reproduced, stored and/or transmitted in whole or in part by any manner of electronic, mechanical, photocopying, recording, broadcasting or otherwise now known or herein after developed without the previous express consent by the copyright owner, except for reproduction in daily press and regular printed publications on sale to the public within 60 days of the event related to those data/results and always provided that copyright symbol appears together as follows below.

© DORNA WSBK ORGANIZATION Srl 2018

PATA Italian Round, 11-12-13 May 2018

World Supersport - Results Free Practice 2nd Session

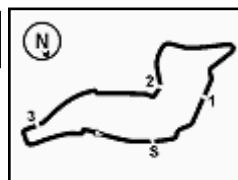
Session Highlights

Local Time	No. Rider	Description
15.00.00		Start
15.00.10		WorldSSP Pit Intervention Time: 1min 18secs
15.01.26	22 E. LAHTI	Current Lap Cancelled - Exceeded Track Limits - Turn 14
15.04.14	111 K. SMITH	On the Gravel - Re-Joined - Turn 13
15.05.08	74 J. VAN SIKKELERUS	Lap Cancelled (1'56.765) - Exceeded Track Limits - Turn 22
15.05.12	74 J. VAN SIKKELERUS	Current Lap Cancelled - Exceeded Track Limits
15.05.12	78 H. OKUBO	Current Lap Cancelled - Exceeded Track Limits - Turn 14
15.06.06	144 L. MAHIAS	Technical Problem - Turn 10
15.06.07	11 S. CORTESE	Current Lap Cancelled - Exceeded Track Limits - Turn 14
15.06.49	144 L. MAHIAS	Re-joined
15.07.45	144 L. MAHIAS	Technical Problem - Turn 15
15.07.57	144 L. MAHIAS	Bike Returning
15.08.09	60 L. GABELLINI	Lap Cancelled (1'55.648) - Exceeded Track Limits - Turn 22
15.08.12	60 L. GABELLINI	Current Lap Cancelled - Exceeded Track Limits
15.08.17	34 J. ITURRIOZ	Lap Cancelled (1'57.659) - Exceeded Track Limits - Turn 22
15.08.21	34 J. ITURRIOZ	Current Lap Cancelled - Exceeded Track Limits
15.09.09	10 N. CALERO	Lap Cancelled (1'55.050) - Exceeded Track Limits - Turn 22
15.09.13	10 N. CALERO	Current Lap Cancelled - Exceeded Track Limits
15.09.46	13 A. WEST	On the Gravel - Re-Joined - Turn 12
15.09.55	56 P. SEBESTYEN	Lap Cancelled (1'55.426) - Exceeded Track Limits - Turn 22
15.09.59	56 P. SEBESTYEN	Current Lap Cancelled - Exceeded Track Limits
15.10.05	84 L. CRESSON	Lap Cancelled (1'54.436) - Exceeded Track Limits - Turn 22
15.10.10	84 L. CRESSON	Current Lap Cancelled - Exceeded Track Limits
15.11.39	54 K. SOFUOGLU	On the Gravel - Re-Joined - Turn 13
15.13.00	86 A. BADOVINI	Lap Cancelled (1'52.877) - Exceeded Track Limits - Turn 22
15.13.05	86 A. BADOVINI	Current Lap Cancelled - Exceeded Track Limits
15.15.33	65 M. CANDUCCI	Lap Cancelled (2'18.322) - Exceeded Track Limits - Turn 22
15.15.39	65 M. CANDUCCI	Current Lap Cancelled - Exceeded Track Limits
15.18.26	52 M. MALONE	On the Gravel - Re-Joined - Turn 2
15.22.52	13 A. WEST	On the Gravel - Re-Joined - Turn 2
15.23.30	64 F. CARICASULO	Lap Cancelled (1'53.063) - Exceeded Track Limits - Turn 22
15.24.43	81 L. STAPLEFORD	Lap Cancelled (1'53.228) - Exceeded Track Limits - Turn 22
15.24.49	81 L. STAPLEFORD	Current Lap Cancelled - Exceeded Track Limits
15.25.30	3 R. DE ROSA	BLACK FLAG
15.29.05	74 J. VAN SIKKELERUS	On the Gravel - Re-Joined - Turn 2
15.31.34	3 R. DE ROSA	Allowed to continue the practice
15.32.10	16 J. CLUZEL	On the Gravel - Re-Joined - Turn 2
15.36.14	13 A. WEST	On the Gravel - Re-Joined - Turn 5
15.36.57	21 R. KRUMMENACHER	Crashed - Turn 22
15.37.15	144 L. MAHIAS	On the Gravel - Re-Joined - Turn 7
15.39.43	34 J. ITURRIOZ	Current Lap Cancelled - Exceeded Track Limits - Turn 14
15.40.15	111 K. SMITH	On the Gravel - Re-Joined - Turn 12
15.40.23	35 S. HILL	On the Gravel - Re-Joined - Turn 12
15.42.00	74 J. VAN SIKKELERUS	On the Gravel - Re-Joined - Turn 13
15.44.11	35 S. HILL	Current Lap Cancelled - Exceeded Track Limits - Turn 14
15.45.42	74 J. VAN SIKKELERUS	Current Lap Cancelled - Exceeded Track Limits - Turn 14
15.45.43	10 N. CALERO	Lap Cancelled (2'09.592) - Exceeded Track Limits - Turn 22
15.45.50	81 L. STAPLEFORD	Current Lap Cancelled - Exceeded Track Limits - Turn 14
15.45.52	10 N. CALERO	Current Lap Cancelled - Exceeded Track Limits
15.46.11	78 H. OKUBO	On the Gravel - Re-Joined - Turn 2
15.47.11	84 L. CRESSON	Current Lap Cancelled - Exceeded Track Limits - Turn 14
15.47.20	10 N. CALERO	On the Gravel - Re-Joined - Turn 12
15.48.00	78 H. OKUBO	Crashed - Turn 22
15.48.20	63 D. STIRPE	Crashed - Turn 7
15.48.54	55 M. ROCCOLI	Crashed - Turn 4
15.49.20	38 H. SOOMER	Crashed - Turn 2
15.49.34	63 D. STIRPE	Re-joined
15.52.20		End Of Session

Start	End	The results are provisional until the end of the time limit for protests and appeals
11/05/2018 15:00	15:52	and the completion of the technical checks.

These data/results cannot be reproduced, stored and/or transmitted in whole or in part by any manner of electronic, mechanical, photocopying, recording, broadcasting or otherwise now known or herein after developed without the previous express consent by the copyright owner, except for reproduction in daily press and regular printed publications on sale to the public within 60 days of the event related to those data/results and always provided that copyright symbol appears together as follows below.

© DORNA WSBK ORGANIZATION Srl 2018



PATA Italian Round, 11-12-13 May 2018

World Supersport - Results Free Practice 2nd Session

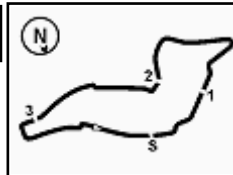
Fastest Laps Sequence

No.	Rider	Nat	Team	Bike	Local Time	Time	Gap	Avg
64	F. CARICASULO	ITA	GRT Yamaha Official WorldSSP Team	Yamaha YZF R6	15:03'52.823	1'54.296		155,470
78	H. OKUBO	JPN	Kawasaki Puccetti Racing	Kawasaki ZX-6R	15:03'56.016	1'53.934	-0.362	155,964
16	J. CLUZEL	FRA	NRT	Yamaha YZF R6	15:05'20.767	1'52.927	-1.007	157,355
64	F. CARICASULO	ITA	GRT Yamaha Official WorldSSP Team	Yamaha YZF R6	15:05'45.714	1'52.891	-0.036	157,405
16	J. CLUZEL	FRA	NRT	Yamaha YZF R6	15:07'13.377	1'52.610	-0.281	157,798
21	R. KRUMMENACHER	SUI	BARDAHL Evan Bros. WorldSSP Team	Yamaha YZF R6	15:07'15.442	1'52.551	-0.059	157,880
21	R. KRUMMENACHER	SUI	BARDAHL Evan Bros. WorldSSP Team	Yamaha YZF R6	15:12'58.168	1'52.245	-0.306	158,311
16	J. CLUZEL	FRA	NRT	Yamaha YZF R6	15:13'00.645	1'52.222	-0.023	158,343
16	J. CLUZEL	FRA	NRT	Yamaha YZF R6	15:14'52.646	1'52.001	-0.221	158,656
64	F. CARICASULO	ITA	GRT Yamaha Official WorldSSP Team	Yamaha YZF R6	15:27'04.550	1'51.870	-0.131	158,842
64	F. CARICASULO	ITA	GRT Yamaha Official WorldSSP Team	Yamaha YZF R6	15:34'32.373	1'51.578	-0.292	159,257
64	F. CARICASULO	ITA	GRT Yamaha Official WorldSSP Team	Yamaha YZF R6	15:45'12.895	1'51.538	-0.040	159,314
64	F. CARICASULO	ITA	GRT Yamaha Official WorldSSP Team	Yamaha YZF R6	15:47'04.085	1'51.190	-0.348	159,813

Start 11/05/2018 15:00 End 15:52 The results are provisional until the end of the time limit for protests and appeals and the completion of the technical checks.

These data/results cannot be reproduced, stored and/or transmitted in whole or in part by any manner of electronic, mechanical, photocopying, recording, broadcasting or otherwise now known or herein after developed without the previous express consent by the copyright owner, except for reproduction in daily press and regular printed publications on sale to the public within 60 days of the event related to those data/results and always provided that copyright symbol appears together as follows below.

© DORNA WSBK ORGANIZATION Srl 2018


PATA Italian Round, 11-12-13 May 2018
World Supersport - Best Sectors & Speed Free Practice 2nd Session

BEST LAP			
1	64 F. CARICASULO	Yamaha YZF R6	1'51.190
2	11 S. CORTESE	Yamaha YZF R6	1'51.375
3	16 J. CLUZEL	Yamaha YZF R6	1'51.448
4	54 K. SOFUOGLU	Kawasaki ZX-6R	1'51.877
5	3 R. DE ROSA	MV Agusta F3 675	1'51.882
6	144 L. MAHIAS	Yamaha YZF R6	1'51.905
7	81 L. STAPLEFORD	Triumph Daytona 675	1'51.956
8	86 A. BADOVINI	MV Agusta F3 675	1'52.021
9	78 H. OKUBO	Kawasaki ZX-6R	1'52.129
10	21 R. KRUMMENACHER	Yamaha YZF R6	1'52.148
11	47 R. HARTOG	Kawasaki ZX-6R	1'52.300
12	66 N. TUULI	Honda CBR600RR	1'52.390
13	53 N. MORRENTINO	Kawasaki ZX-6R	1'52.405
14	63 D. STIRPE	MV Agusta F3 675	1'52.459
15	55 M. ROCCOLI	Yamaha YZF R6	1'53.016
16	84 L. CRESSON	Yamaha YZF R6	1'53.114
17	13 A. WEST	Kawasaki ZX-6R	1'53.120
18	111 K. SMITH	Honda CBR600RR	1'53.286
19	36 T. GRADINGER	Yamaha YZF R6	1'53.383
20	60 L. GABELLINI	Yamaha YZF R6	1'53.476
21	38 H. SOOMER	Honda CBR600RR	1'53.823
22	10 N. CALERO	Kawasaki ZX-6R	1'53.897
23	35 S. HILL	Triumph Daytona 675	1'54.138
24	22 E. LAHTI	Suzuki GSX-R600	1'54.247
25	77 W. TESSELS	Kawasaki ZX-6R	1'54.405
26	96 A. IRWIN	Honda CBR600RR	1'54.724
27	52 M. MALONE	Kawasaki ZX-6R	1'54.759
28	15 A. COPPOLA	Yamaha YZF R6	1'54.874
29	56 P. SEBESTYEN	Kawasaki ZX-6R	1'54.897
30	65 M. CANDUCCI	Kawasaki ZX-6R	1'55.090
31	74 J. VAN SIKKELERUS	Honda CBR600RR	1'55.443
32	34 J. ITURRIOZ	Kawasaki ZX-6R	1'55.593

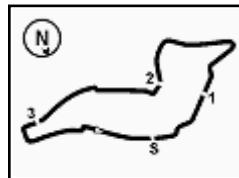
SPEED			
1	84 L. CRESSON	Yamaha YZF R6	253,7
2	16 J. CLUZEL	Yamaha YZF R6	252,5
3	21 R. KRUMMENACHER	Yamaha YZF R6	251,9
4	78 H. OKUBO	Kawasaki ZX-6R	250,7
5	36 T. GRADINGER	Yamaha YZF R6	250,7
6	11 S. CORTESE	Yamaha YZF R6	250,7
7	64 F. CARICASULO	Yamaha YZF R6	250,7
8	54 K. SOFUOGLU	Kawasaki ZX-6R	250,2
9	47 R. HARTOG	Kawasaki ZX-6R	249,0
10	63 D. STIRPE	MV Agusta F3 675	248,4
11	144 L. MAHIAS	Yamaha YZF R6	248,4
12	3 R. DE ROSA	MV Agusta F3 675	248,4
13	13 A. WEST	Kawasaki ZX-6R	247,3
14	111 K. SMITH	Honda CBR600RR	246,2
15	52 M. MALONE	Kawasaki ZX-6R	246,2
16	22 E. LAHTI	Suzuki GSX-R600	245,6
17	66 N. TUULI	Honda CBR600RR	245,6
18	38 H. SOOMER	Honda CBR600RR	245,1
19	53 N. MORRENTINO	Kawasaki ZX-6R	244,5
20	86 A. BADOVINI	MV Agusta F3 675	244,5
21	77 W. TESSELS	Kawasaki ZX-6R	244,5
22	10 N. CALERO	Kawasaki ZX-6R	244,5
23	55 M. ROCCOLI	Yamaha YZF R6	244,0
24	81 L. STAPLEFORD	Triumph Daytona 675	243,4
25	56 P. SEBESTYEN	Kawasaki ZX-6R	242,3
26	65 M. CANDUCCI	Kawasaki ZX-6R	241,8
27	15 A. COPPOLA	Yamaha YZF R6	241,8
28	96 A. IRWIN	Honda CBR600RR	241,8
29	60 L. GABELLINI	Yamaha YZF R6	241,2
30	35 S. HILL	Triumph Daytona 675	241,2
31	34 J. ITURRIOZ	Kawasaki ZX-6R	239,6
32	74 J. VAN SIKKELERUS	Honda CBR600RR	239,1

SEG. 1			SEG. 2			SEG. 3			SEG. 4		
1	16 J. CLUZEL	23.991	1	64 F. CARICASULO	34.414	1	11 S. CORTESE	29.517	1	64 F. CARICASULO	22.984
2	64 F. CARICASULO	23.992	2	81 L. STAPLEFORD	34.503	2	16 J. CLUZEL	29.628	2	144 L. MAHIAS	23.009
3	11 S. CORTESE	24.065	3	11 S. CORTESE	34.517	3	144 L. MAHIAS	29.654	3	86 A. BADOVINI	23.087
4	3 R. DE ROSA	24.078	4	16 J. CLUZEL	34.589	4	21 R. KRUMMENACHER	29.662	4	81 L. STAPLEFORD	23.118
5	78 H. OKUBO	24.126	5	144 L. MAHIAS	34.640	5	64 F. CARICASULO	29.699	5	54 K. SOFUOGLU	23.142
6	63 D. STIRPE	24.134	6	53 N. MORRENTINO	34.649	6	3 R. DE ROSA	29.733	6	78 H. OKUBO	23.145
7	21 R. KRUMMENACHER	24.138	7	86 A. BADOVINI	34.680	7	54 K. SOFUOGLU	29.742	7	3 R. DE ROSA	23.148
8	47 R. HARTOG	24.138	8	3 R. DE ROSA	34.728	8	86 A. BADOVINI	29.747	8	16 J. CLUZEL	23.199
9	54 K. SOFUOGLU	24.176	9	47 R. HARTOG	34.790	9	78 H. OKUBO	29.781	9	11 S. CORTESE	23.200
10	144 L. MAHIAS	24.225	10	54 K. SOFUOGLU	34.793	10	66 N. TUULI	29.914	10	111 K. SMITH	23.268
11	81 L. STAPLEFORD	24.281	11	63 D. STIRPE	34.802	11	81 L. STAPLEFORD	29.920	11	21 R. KRUMMENACHER	23.270
12	84 L. CRESSON	24.295	12	66 N. TUULI	34.802	12	53 N. MORRENTINO	29.980	12	55 M. ROCCOLI	23.272
13	36 T. GRADINGER	24.319	13	21 R. KRUMMENACHER	34.837	13	63 D. STIRPE	29.993	13	60 L. GABELLINI	23.276
14	55 M. ROCCOLI	24.324	14	78 H. OKUBO	34.840	14	47 R. HARTOG	29.996	14	13 A. WEST	23.290
15	66 N. TUULI	24.326	15	55 M. ROCCOLI	34.856	15	84 L. CRESSON	30.011	15	47 R. HARTOG	23.305
16	86 A. BADOVINI	24.364	16	36 T. GRADINGER	35.001	16	13 A. WEST	30.052	16	84 L. CRESSON	23.334
17	53 N. MORRENTINO	24.382	17	35 S. HILL	35.055	17	111 K. SMITH	30.061	17	66 N. TUULI	23.336
18	10 N. CALERO	24.452	18	60 L. GABELLINI	35.069	18	55 M. ROCCOLI	30.074	18	53 N. MORRENTINO	23.354
19	111 K. SMITH	24.454	19	13 A. WEST	35.085	19	36 T. GRADINGER	30.075	19	63 D. STIRPE	23.386
20	13 A. WEST	24.494	20	84 L. CRESSON	35.102	20	60 L. GABELLINI	30.172	20	38 H. SOOMER	23.458
21	60 L. GABELLINI	24.540	21	111 K. SMITH	35.112	21	38 H. SOOMER	30.237	21	36 T. GRADINGER	23.562
22	22 E. LAHTI	24.543	22	22 E. LAHTI	35.161	22	96 A. IRWIN	30.391	22	35 S. HILL	23.569
23	77 W. TESSELS	24.580	23	77 W. TESSELS	35.183	23	10 N. CALERO	30.400	23	10 N. CALERO	23.616
24	38 H. SOOMER	24.580	24	38 H. SOOMER	35.200	24	22 E. LAHTI	30.413	24	96 A. IRWIN	23.680
25	52 M. MALONE	24.583	25	10 N. CALERO	35.253	25	15 A. COPPOLA	30.564	25	52 M. MALONE	23.682
26	35 S. HILL	24.605	26	15 A. COPPOLA	35.468	26	35 S. HILL	30.573	26	22 E. LAHTI	23.738
27	15 A. COPPOLA	24.759	27	56 P. SEBESTYEN	35.487	27	52 M. MALONE	30.603	27	15 A. COPPOLA	23.754
28	96 A. IRWIN	24.767	28	96 A. IRWIN	35.492	28	65 M. CANDUCCI	30.607	28	65 M. CANDUCCI	23.813
29	56 P. SEBESTYEN	24.781	29	52 M. MALONE	35.569	29	56 P. SEBESTYEN	30.701	29	74 J. VAN SIKKELERUS	23.816
30	65 M. CANDUCCI	24.796	30	65 M. CANDUCCI	35.602	30	77 W. TESSELS	30.703	30	56 P. SEBESTYEN	23.850
31	34 J. ITURRIOZ	24.896	31	74 J. VAN SIKKELERUS	35.626	31	74 J. VAN SIKKELERUS	30.779	31	34 J. ITURRIOZ	23.877
32	74 J. VAN SIKKELERUS	24.946	32	34 J. ITURRIOZ	35.705	32	34 J. ITURRIOZ	30.812	32	77 W. TESSELS	23.877

11/05/2018

These data/results cannot be reproduced, stored and/or transmitted in whole or in part by any manner of electronic, mechanical, photocopying, recording, broadcasting or otherwise now known or herein after developed without the previous express consent by the copyright owner, except for reproduction in daily press and regular printed publications on sale to the public within 60 days of the event related to those data/results and always provided that copyright symbol appears together as follows below.

© DORNA WSBK ORGANIZATION Srl 2018



PATA Italian Round, 11-12-13 May 2018

World Supersport - Ideal Times Free Practice 2nd Session

Imola Circuit 4.936 m

1 / 2

No.	Rider	Nat	Bike	Seg. 1 Diff. 1	Seg. 2 Diff. 2	Seg. 3 Diff. 3	Seg. 4 Diff. 4	Ideal Time Best Lap	Pos.	Diff.
1	64 F. CARICASULO	ITA	Yamaha YZF R6	23.992 0.055	34.414	29.699 0.046	22.984	1'51.089 1'51.190	1	0.101
2	11 S. CORTESE	GER	Yamaha YZF R6	24.065 0.068	34.517	29.517 0.008	23.200	1'51.299 1'51.375	2	0.076
3	16 J. CLUZEL	FRA	Yamaha YZF R6	23.991	34.589	29.628	23.199 0.041	1'51.407 1'51.448	3	0.041
4	144 L. MAHIAS	FRA	Yamaha YZF R6	24.225 0.127	34.640 0.118	29.654 0.132	23.009	1'51.528 1'51.905	6	0.377
5	3 R. DE ROSA	ITA	MV Agusta F3 675	24.078	34.728 0.148	29.733	23.148 0.047	1'51.687 1'51.882	5	0.195
6	81 L. STAPLEFORD	GBR	Triumph Daytona 675	24.281 0.047	34.503	29.920 0.087	23.118	1'51.822 1'51.956	7	0.134
7	54 K. SOFUOGLU	TUR	Kawasaki ZX-6R	24.176	34.793	29.742	23.142 0.024	1'51.853 1'51.877	4	0.024
8	86 A. BADOVINI	ITA	MV Agusta F3 675	24.364 0.039	34.680	29.747	23.087 0.104	1'51.878 1'52.021	8	0.143
9	78 H. OKUBO	JPN	Kawasaki ZX-6R	24.126 0.222	34.840 0.015	29.781	23.145	1'51.892 1'52.129	9	0.237
10	21 R. KRUMMENACHER	SUI	Yamaha YZF R6	24.138 0.097	34.837 0.071	29.662 0.073	23.270	1'51.907 1'52.148	10	0.241
11	47 R. HARTOG	NED	Kawasaki ZX-6R	24.138 0.071	34.790	29.996	23.305	1'52.229 1'52.300	11	0.071
12	63 D. STIRPE	ITA	MV Agusta F3 675	24.134	34.802	29.993	23.386 0.144	1'52.315 1'52.459	14	0.144
13	53 N. MORRENTINO	ITA	Kawasaki ZX-6R	24.382	34.649	29.980 0.030	23.354 0.010	1'52.365 1'52.405	13	0.040
14	66 N. TUULI	FIN	Honda CBR600RR	24.326	34.802	29.914	23.336 0.012	1'52.378 1'52.390	12	0.012
15	55 M. ROCCOLI	ITA	Yamaha YZF R6	24.324 0.095	34.856	30.074 0.190	23.272 0.205	1'52.526 1'53.016	15	0.490
16	84 L. CRESSON	BEL	Yamaha YZF R6	24.295 0.005	35.102 0.085	30.011	23.334 0.282	1'52.742 1'53.114	16	0.372
17	111 K. SMITH	GBR	Honda CBR600RR	24.454 0.241	35.112 0.150	30.061	23.268	1'52.895 1'53.286	18	0.391
18	13 A. WEST	AUS	Kawasaki ZX-6R	24.494 0.031	35.085	30.052 0.080	23.290 0.088	1'52.921 1'53.120	17	0.199
19	36 T. GRADINGER	AUT	Yamaha YZF R6	24.319 0.184	35.001 0.211	30.075 0.031	23.562	1'52.957 1'53.383	19	0.426
20	60 L. GABELLINI	ITA	Yamaha YZF R6	24.540 0.203	35.069 0.117	30.172 0.042	23.276 0.057	1'53.057 1'53.476	20	0.419
21	38 H. SOOMER	EST	Honda CBR600RR	24.580	35.200 0.231	30.237	23.458 0.117	1'53.475 1'53.823	21	0.348
22	10 N. CALERO	ESP	Kawasaki ZX-6R	24.452	35.253 0.176	30.400	23.616	1'53.721 1'53.897	22	0.176
23	35 S. HILL	GBR	Triumph Daytona 675	24.605 0.167	35.055 0.066	30.573	23.569 0.103	1'53.802 1'54.138	23	0.336
24	22 E. LAHTI	FIN	Suzuki GSX-R600	24.543	35.161	30.413	23.738 0.392	1'53.855 1'54.247	24	0.392
25	96 A. IRWIN	GBR	Honda CBR600RR	24.767 0.100	35.492	30.391	23.680 0.294	1'54.330 1'54.724	26	0.394
26	77 W. TESSELS	NED	Kawasaki ZX-6R	24.580 0.062	35.183	30.703	23.877	1'54.343 1'54.405	25	0.062
27	52 M. MALONE	ITA	Kawasaki ZX-6R	24.583	35.569 0.179	30.603	23.682 0.143	1'54.437 1'54.759	27	0.322
28	15 A. COPPOLA	ITA	Yamaha YZF R6	24.759 0.117	35.468 0.211	30.564	23.754 0.001	1'54.545 1'54.874	28	0.329
29	65 M. CANDUCCI	ITA	Kawasaki ZX-6R	24.796	35.602	30.607 0.272	23.813	1'54.818 1'55.090	30	0.272
30	56 P. SEBESTYEN	HUN	Kawasaki ZX-6R	24.781 0.011	35.487	30.701 0.067	23.850	1'54.819 1'54.897	29	0.078
31	74 J. VAN SIKKELERUS	NED	Honda CBR600RR	24.946 0.245	35.626	30.779 0.031	23.816	1'55.167 1'55.443	31	0.276

11/05/2018

These data/results cannot be reproduced, stored and/or transmitted in whole or in part by any manner of electronic, mechanical, photocopying, recording, broadcasting or otherwise now known or herein after developed without the previous express consent by the copyright owner, except for reproduction in daily press and regular printed publications on sale to the public within 60 days of the event related to those data/results and always provided that copyright symbol appears together as follows below.

© DORNA WSBK ORGANIZATION Srl 2018

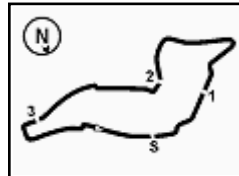
FICR PERUGIA TIMING



Official Tyre Supplier



Official Timekeeper


 Imola Circuit 4.936 m
2 / 2

PATA Italian Round, 11-12-13 May 2018

World Supersport - Ideal Times Free Practice 2nd Session

No. Rider	Nat	Bike	Seg. 1	Seg. 2	Seg. 3	Seg. 4	Ideal Time				
			Diff. 1	Diff. 2	Diff. 3	Diff. 4	Best Lap	Pos.	Diff.		
32	34	J. ITURRIOZ	ARG	Kawasaki ZX-6R	24.896	35.705 0.303	30.812	23.877	1'55.290	32	0.303
Overall Ideal Time			23.991	34.414	29.517	22.984	1'50.906				

11/05/2018

These data/results cannot be reproduced, stored and/or transmitted in whole or in part by any manner of electronic, mechanical, photocopying, recording, broadcasting or otherwise now known or herein after developed without the previous express consent by the copyright owner, except for reproduction in daily press and regular printed publications on sale to the public within 60 days of the event related to those data/results and always provided that copyright symbol appears together as follows below.

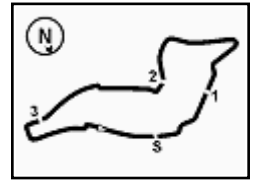
© DORNA WSBK ORGANIZATION Srl 2018

FKR PERUGIA TIMING


Official Tyre Supplier



Official Timekeeper



PATA Italian Round, 11-12-13 May 2018

World Supersport - Chronological Analysis Free Practice 2nd Session

7	25.169	35.750	31.163	23.967	1'56.049	237,0	15:13'05.423
8	25.593	37.393	32.014	7'45.253	9'20.253P	229,5	15:22'25.676
9	39.541	39.408	32.050	24.271	2'15.270P	156,6	15:24'40.946
10	25.360	36.340	31.215	24.116	1'57.031	236,5	15:26'37.977
11	25.250	36.061	31.049	23.893	1'56.253	234,9	15:28'34.230
12	29.579	38.641	32.641	25.063	2'05.924	239,1	15:30'40.154
13	25.558	39.260	31.514	24.166	2'00.498	234,9	15:32'40.652
14	25.434	36.044	31.196	6'03.463	7'36.137P	231,4	15:40'16.789
15	36.263	37.360	32.009	24.743	2'10.375P	174,6	15:42'27.164
16	25.099	36.120	30.968	24.061	1'56.248	235,5	15:44'23.412
17	24.946	35.796	36.846	24.767	2'02.355C	237,0	15:46'25.767
18	25.143	35.751	30.779	24.019	1'55.692	236,5	15:48'21.459
19	25.191	35.626	30.810	23.816	1'55.443	234,9	15:50'16.902

32° 34 J. ITURRIOZ (1'55.593)

Lap	Seg.1	Seg.2	Seg.3	Seg.4	Lap Time	km/h	Local Time
1							15:00'05.212
2	37.696	40.107	32.933	24.806	2'15.542P	179,5	15:02'20.754
3	25.598	36.727	31.582	24.421	1'58.328	223,8	15:04'19.082
4	25.673	36.877	31.356	24.473	1'58.379	237,0	15:06'17.461
5	25.234	36.658	31.540	24.227	1'57.659C	238,6	15:08'15.120
6	34.071	39.775	33.442	24.899	2'12.187C	196,9	15:10'27.307
7	25.332	37.010	31.592	24.372	1'58.306	225,2	15:12'25.613
8	26.044	38.924	32.176	5'47.375	7'24.519P	227,0	15:19'50.132
9	42.631	39.475	33.493	24.803	2'20.402P	160,6	15:22'10.534
10	25.238	36.396	30.973	24.215	1'56.822	236,0	15:24'07.356
11	31.380	39.222	33.863	24.775	2'09.240	237,0	15:26'16.596
12	25.187	36.399	31.000	23.978	1'56.564	231,4	15:28'13.160
13	24.896	36.008	30.812	23.877	1'55.593	239,6	15:30'08.753
14	25.567	38.768	32.850	6'27.595	8'04.780P	214,0	15:38'13.533
15	35.894	36.136	31.985	24.222	2'08.237CP	172,9	15:40'21.770
16	25.125	35.705	34.096	23.991	1'58.917	237,0	15:42'20.687
17	25.075	36.185	31.345	24.205	1'56.810	238,0	15:44'17.497
18	31.048	40.768	34.034	24.788	2'10.638	237,0	15:46'28.135
19	25.061	36.178	31.370	24.325	1'56.934	237,5	15:48'25.069
20	24.961	36.204	30.959	24.114	1'56.238	237,0	15:50'21.307

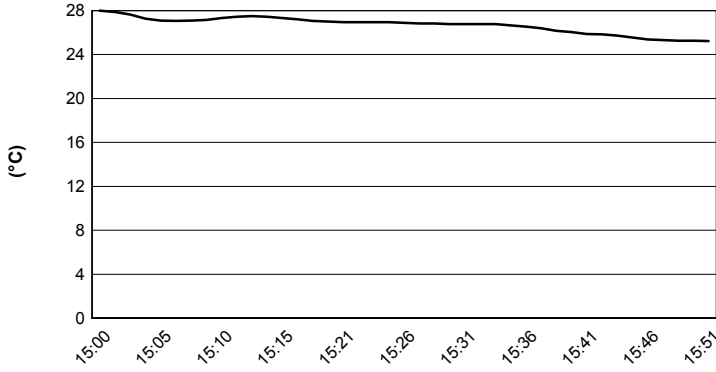
11/05/2018 P = Pits In/Out - C = Lap Time Cancelled

These data/results cannot be reproduced, stored and/or transmitted in whole or in part by any manner of electronic, mechanical, photocopying, recording, broadcasting or otherwise now known or herein after developed without the previous express consent by the copyright owner, except for reproduction in daily press and regular printed publications on sale to the public within 60 days of the event related to those data/results and always provided that copyright symbol appears together as follows below.

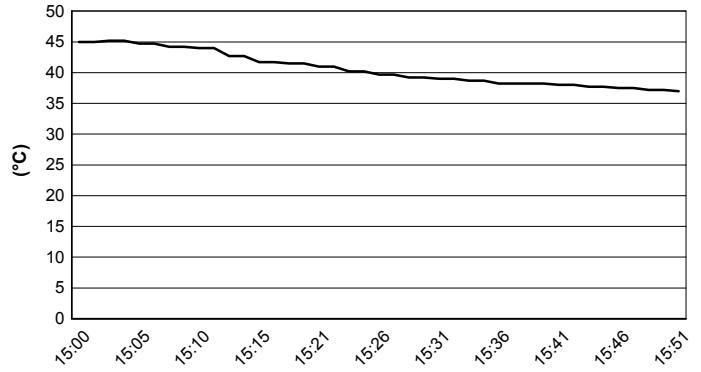
© DORNA WSBK ORGANIZATION Srl 2018

PATA Italian Round, 11-12-13 May 2018
World Supersport - Weather Report Free Practice 2nd Session
 Session started 15:00 - Session ended 15:52

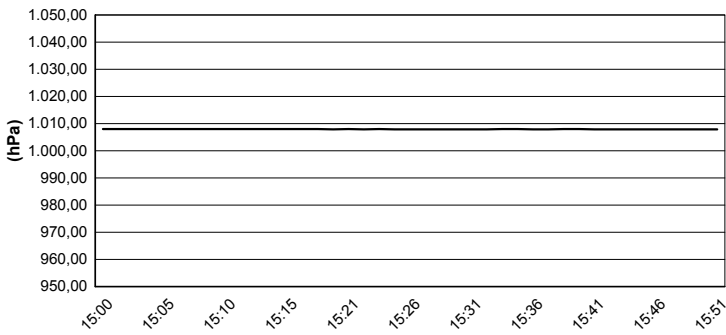
Air Temperature



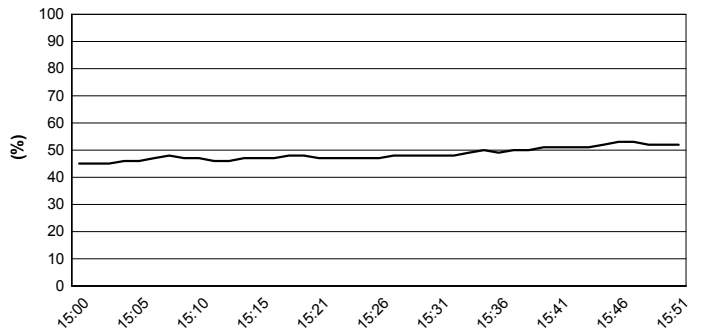
Track Temperature



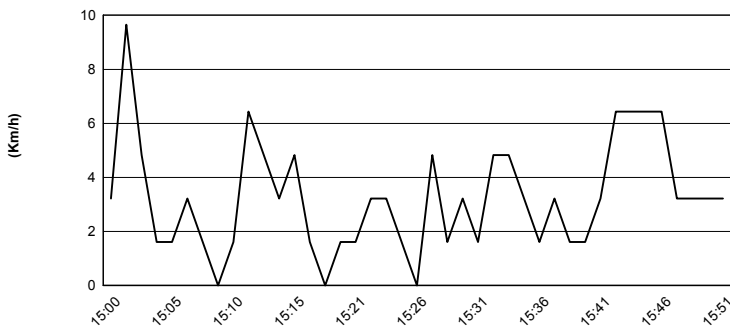
Air Pressure



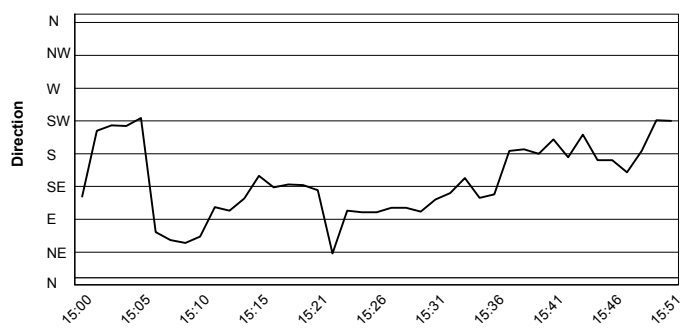
Humidity



Wind Speed



Wind Direction



11/05/2018

These data/results cannot be reproduced, stored and/or transmitted in whole or in part by any manner of electronic, mechanical, photocopying, recording, broadcasting or otherwise now known or herein after developed without the previous express consent by the copyright owner, except for reproduction in daily press and regular printed publications on sale to the public within 60 days of the event related to those data/results and always provided that copyright symbol appears together as follows below.

© DORNA WSBK ORGANIZATION Srl 2018

PATA Italian Round, 11-12-13 May 2018

World Supersport - Superpoles Entry List

Superpole 1

FPs Pos	No. Rider	Nat	Team	Bike	Time
11	111 K. SMITH	GBR	GEMAR Team Lorini	Honda CBR600RR	1'52.237
12	47 R. HARTOG	NED	Team Hartog - Against Cancer	Kawasaki ZX-6R	1'52.300
13	66 N. TUULI	FIN	CIA Landlord Insurance Honda	Honda CBR600RR	1'52.390
14	53 N. MORRENTINO	ITA	Renzi Corse	Kawasaki ZX-6R	1'52.405
15	63 D. STIRPE	ITA	Extreme Racing BARDAHL	MV Agusta F3 675	1'52.459
16	55 M. ROCCOLI	ITA	G.A.S. Racing Team	Yamaha YZF R6	1'53.016
17	84 L. CRESSON	BEL	Kallio Racing	Yamaha YZF R6	1'53.114
18	13 A. WEST	AUS	EAB antwest Racing	Kawasaki ZX-6R	1'53.120
19	38 H. SOOMER	EST	Racedays	Honda CBR600RR	1'53.264
20	36 T. GRADINGER	AUT	NRT	Yamaha YZF R6	1'53.383
21	60 L. GABELLINI	ITA	G.A.S. Racing Team	Yamaha YZF R6	1'53.476
22	10 N. CALERO	ESP	Orelac Racing VerdNatura	Kawasaki ZX-6R	1'53.897
23	35 S. HILL	GBR	Profile Racing	Triumph Daytona 675	1'54.138
24	22 E. LAHTI	FIN	Sterkman Motorsport by HRP	Suzuki GSX-R600	1'54.247
25	77 W. TESSELS	NED	Chromeburner Wayne's Racingteam MtM	Kawasaki ZX-6R	1'54.405
26	65 M. CANDUCCI	ITA	Team GoEleven Kawasaki	Kawasaki ZX-6R	1'54.609
27	96 A. IRWIN	GBR	CIA Landlord Insurance Honda	Honda CBR600RR	1'54.724
28	52 M. MALONE	ITA	Team GREENSPEED	Kawasaki ZX-6R	1'54.759
29	15 A. COPPOLA	ITA	GRT Yamaha Official WorldSSP Junior Team	Yamaha YZF R6	1'54.874
30	56 P. SEBESTYEN	HUN	SSP Hungary Racing	Kawasaki ZX-6R	1'54.897
31	74 J. VAN SIKKELERUS	NED	GEMAR Team Lorini	Honda CBR600RR	1'55.443
32	34 J. ITURRIOZ	ARG	Team GoEleven Kawasaki	Kawasaki ZX-6R	1'55.593

Superpole 2

FPs Pos	No. Rider	Nat	Team	Bike	Time
1	64 F. CARICASULO	ITA	GRT Yamaha Official WorldSSP Team	Yamaha YZF R6	1'51.190
2	144 L. MAHIAS	FRA	GRT Yamaha Official WorldSSP Team	Yamaha YZF R6	1'51.241
3	11 S. CORTESE	GER	Kallio Racing	Yamaha YZF R6	1'51.375
4	16 J. CLUZEL	FRA	NRT	Yamaha YZF R6	1'51.448
5	54 K. SOFUOGLU	TUR	Kawasaki Puccetti Racing	Kawasaki ZX-6R	1'51.877
6	3 R. DE ROSA	ITA	MV Agusta Reparto Corse by Vomag	MV Agusta F3 675	1'51.882
7	81 L. STAPLEFORD	GBR	Profile Racing	Triumph Daytona 675	1'51.956
8	86 A. BADOVINI	ITA	MV Agusta Reparto Corse by Vomag	MV Agusta F3 675	1'52.019
9	78 H. OKUBO	JPN	Kawasaki Puccetti Racing	Kawasaki ZX-6R	1'52.129
10	21 R. KRUMMENACHER	SUI	BARDAHL Evan Bros. WorldSSP Team	Yamaha YZF R6	1'52.148

*
*

* These positions are assigned to the 1st and 2nd rider classified in Superpole 1

11/05/2018 11

These data/results cannot be reproduced, stored and/or transmitted in whole or in part by any manner of electronic, mechanical, photocopying, recording, broadcasting or otherwise now known or herein after developed without the previous express consent by the copyright owner, except for reproduction in daily press and regular printed publications on sale to the public within 60 days of the event related to those data/results and always provided that copyright symbol appears together as follows below.

© DORNA WSBK ORGANIZATION Srl 2018

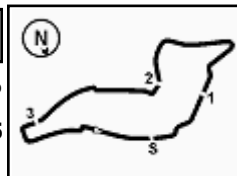
FICR PERUGIA TIMING



Official Tyre Supplier



Official Timekeeper



PATA Italian Round, 11-12-13 May 2018

World Supersport - Best Laps & Speeds

No.	Rider Bike	Nat	Best Lap		FP1		FP2							
			LL	SPD	LL	SPD	LL	SPD						
1	64 F. CARICASULO Yamaha YZF R6	ITA	1'51.190 42 250,7		1'51.442 20 248,4		1'51.190 22 250,7							
2	144 L. MAHIAS Yamaha YZF R6	FRA	1'51.241 31 248,4		1'51.241 19 247,3		1'51.905 12 248,4							
3	11 S. CORTESE Yamaha YZF R6	GER	1'51.375 44 250,7		1'52.164 24 250,1		1'51.375 20 250,7							
4	16 J. CLUZEL Yamaha YZF R6	FRA	1'51.448 33 252,5		1'51.730 15 252,5		1'51.448 18 252,5							
5	54 K. SOFUOGLU Kawasaki ZX-6R	TUR	1'51.877 34 251,3		1'53.235 16 251,3		1'51.877 18 250,1							
6	3 R. DE ROSA MV Agusta F3 675	ITA	1'51.882 39 248,4		1'52.850 18 247,3		1'51.882 21 248,4							
7	81 L. STAPLEFORD Triumph Daytona 675	GBR	1'51.956 37 243,4		1'52.378 15 243,4		1'51.956 22 243,4							
8	86 A. BADOVINI MV Agusta F3 675	ITA	1'52.019 36 245,6		1'52.019 17 245,6		1'52.021 19 244,5							
9	78 H. OKUBO Kawasaki ZX-6R	JPN	1'52.129 37 250,7		1'52.633 20 249,0		1'52.129 17 250,7							
10	21 R. KRUMMENACHER Yamaha YZF R6	SUI	1'52.148 26 251,9		1'52.578 17 250,1		1'52.148 9 251,9							
11	111 K. SMITH Honda CBR600RR	GBR	1'52.237 24 246,1		1'52.237 14 246,1		1'53.286 10 246,1							
12	47 R. HARTOG Kawasaki ZX-6R	NED	1'52.300 38 249,0		1'53.605 20 249,0		1'52.300 18 249,0							
13	66 N. TUULI Honda CBR600RR	FIN	1'52.390 27 245,6		1'53.190 14 243,9		1'52.390 13 245,6							
14	53 N. MORRENTINO Kawasaki ZX-6R	ITA	1'52.405 32 244,5		1'53.219 15 244,5		1'52.405 17 244,5							
15	63 D. STIRPE MV Agusta F3 675	ITA	1'52.459 33 248,4		1'52.890 17 247,8		1'52.459 16 248,4							
16	55 M. ROCCOLI Yamaha YZF R6	ITA	1'53.016 32 246,1		1'53.307 17 246,1		1'53.016 15 243,9							
17	84 L. CRESSON Yamaha YZF R6	BEL	1'53.114 34 253,6		1'53.574 18 253,1		1'53.114 16 253,6							
18	13 A. WEST Kawasaki ZX-6R	AUS	1'53.120 33 247,8		1'53.385 18 247,8		1'53.120 15 247,3							
19	38 H. SOOMER Honda CBR600RR	EST	1'53.264 36 249,0		1'53.264 20 249,0		1'53.823 16 245,0							
20	36 T. GRADINGER Yamaha YZF R6	AUT	1'53.383 35 250,7		1'53.574 18 249,5		1'53.383 17 250,7							
21	60 L. GABELLINI Yamaha YZF R6	ITA	1'53.476 40 241,2		1'54.666 20 240,1		1'53.476 20 241,2							
22	10 N. CALERO Kawasaki ZX-6R	ESP	1'53.897 38 244,5		1'55.176 19 244,5		1'53.897 19 244,5							
23	35 S. HILL Triumph Daytona 675	GBR	1'54.138 36 241,2		1'54.604 19 241,2		1'54.138 17 241,2							
24	22 E. LAHTI Suzuki GSX-R600	FIN	1'54.247 33 245,6		1'55.126 17 242,8		1'54.247 16 245,6							
25	77 W. TESSELS Kawasaki ZX-6R	NED	1'54.405 41 244,5		1'54.845 21 243,9		1'54.405 20 244,5							

11/05/2018

These data/results cannot be reproduced, stored and/or transmitted in whole or in part by any manner of electronic, mechanical, photocopying, recording, broadcasting or otherwise now known or herein after developed without the previous express consent by the copyright owner, except for reproduction in daily press and regular printed publications on sale to the public within 60 days of the event related to those data/results and always provided that copyright symbol appears together as follows below.

© DORNA WSBK ORGANIZATION Srl 2018

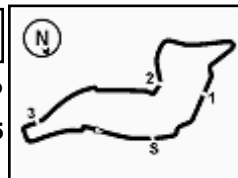
FICR PERUGIA TIMING



Official Tyre Supplier



Official Timekeeper



Imola Circuit 4.936 m

PATA Italian Round, 11-12-13 May 2018

World Supersport - Best Laps & Speeds

2 / 2

No.	Rider Bike	Nat	Best Lap		FP1		FP2							
			LL	SPD	LL	SPD	LL	SPD						
26	65 M. CANDUCCI Kawasaki ZX-6R	ITA	1'54.609		1'54.609		1'55.090							
			34	244,5	16	244,5	18	241,7						
27	96 A. IRWIN Honda CBR600RR	GBR	1'54.724		1'55.863		1'54.724							
			41	241,7	21	240,7	20	241,7						
28	52 M. MALONE Kawasaki ZX-6R	ITA	1'54.759		1'55.136		1'54.759							
			33	246,1	16	246,1	17	246,1						
29	15 A. COPPOLA Yamaha YZF R6	ITA	1'54.874		1'55.979		1'54.874							
			36	241,7	19	240,1	17	241,7						
30	56 P. SEBESTYEN Kawasaki ZX-6R	HUN	1'54.897		1'56.618		1'54.897							
			26	242,3	9	239,1	17	242,3						
31	74 J. VAN SIKKELERUS Honda CBR600RR	NED	1'55.443		1'57.962		1'55.443							
			25	239,1	7	237,5	18	239,1						
32	34 J. ITURRIOZ Kawasaki ZX-6R	ARG	1'55.593		1'56.579		1'55.593							
			38	239,6	19	239,6	19	239,6						

11/05/2018

These data/results cannot be reproduced, stored and/or transmitted in whole or in part by any manner of electronic, mechanical, photocopying, recording, broadcasting or otherwise now known or herein after developed without the previous express consent by the copyright owner, except for reproduction in daily press and regular printed publications on sale to the public within 60 days of the event related to those data/results and always provided that copyright symbol appears together as follows below.

© DORNA WSBK ORGANIZATION Srl 2018

FIAT PERUGIA TIMING


Official Tyre Supplier



Official Timekeeper