

PIRELLI Riviera di Rimini Round, 6 - 8 July 2018

World Supersport - Results Superpole 1

Misano Circuit Sic 58.4.226 m

1 / 2

No.	Rider	Nat	Team	Bike	Class	Time	Gap	Rel.	Laps	Speed	
										Avg	Max
1*	32 S. MORAIS	POR	Kawasaki Puccetti Racing	Kawasaki ZX-6R		1'39.312			7	153,190	234,8
2*	78 H. OKUBO	JPN	Kawasaki Puccetti Racing	Kawasaki ZX-6R		1'39.498	0.186	0.186	6	152,904	233,8
3	36 T. GRADINGER	AUT	NRT	Yamaha YZF R6		1'39.524	0.212	0.026	7	152,864	235,8
4	60 L. GABELLINI	ITA	G.A.S. Racing Team	Yamaha YZF R6		1'39.781	0.469	0.257	6	152,470	226,9
5	38 H. SOOMER	EST	Racedays	Honda CBR600RR		1'39.828	0.516	0.047	7	152,398	233,8
6	63 D. STIRPE	ITA	Extreme Racing BARDAHL	MV Agusta F3 675		1'39.883	0.571	0.055	7	152,314	232,8
7	93 R. MERCANDELLI	ITA	Scuderia Improve - Firenze Motor	Honda CBR600RR		1'39.885	0.573	0.002	5	152,311	231,8
8	56 P. SEBESTYEN	HUN	CIA Landlord Insurance Honda	Honda CBR600RR		1'40.017	0.705	0.132	7	152,110	235,3
9	22 E. LAHTI	FIN	Sterkman Motorsport by HRP	Suzuki GSX-R600	ESS	1'40.028	0.716	0.011	6	152,093	229,3
10	6 C. PEROLARI	FRA	GMT94 Yamaha	Yamaha YZF R6		1'40.114	0.802	0.086	7	151,963	231,3
11	86 A. BADOVINI	ITA	MV Agusta Reparto Corse by Vamag	MV Agusta F3 675		1'40.150	0.838	0.036	8	151,908	228,8
12	15 A. COPPOLA	ITA	GRT Yamaha Official WorldSSP Junior Team	Yamaha YZF R6	ESS	1'40.262	0.950	0.112	6	151,738	232,3
13	47 R. HARTOG	NED	Team Hartog - Against Cancer	Kawasaki ZX-6R	ESS	1'40.264	0.952	0.002	7	151,735	233,3
14	81 L. STAPLEFORD	GBR	Profile Racing	Yamaha YZF R6		1'40.483	1.171	0.219	7	151,405	235,3
15	84 L. CRESSON	BEL	Kallio Racing	Yamaha YZF R6		1'40.524	1.212	0.041	8	151,343	237,9
16	65 M. CANDUCCI	ITA	Team Rosso e Nero	Yamaha YZF R6		1'40.565	1.253	0.041	6	151,281	232,8
17	19 A. BALDOLINI	ITA	GEMAR Team Lorini	Honda CBR600RR		1'40.608	1.296	0.043	6	151,217	232,8
18	10 N. CALERO	ESP	Orelac Racing VerdNatura	Kawasaki ZX-6R		1'40.828	1.516	0.220	7	150,887	229,8
19	77 W. TESSELS	NED	Chromeburner Wayne's Racingteam MtM	Kawasaki ZX-6R	ESS	1'40.839	1.527	0.011	7	150,870	229,8
20	35 S. HILL	GBR	Profile Racing	Triumph Daytona 675		1'41.672	2.360	0.833	6	149,634	228,3
21	97 R. BODIS	HUN	NORDFILM Packaging SSP Hungary Racing	Kawasaki ZX-6R	ESS	1'41.914	2.602	0.242	9	149,279	223,6
22	34 J. ITURRIOZ	ARG	Team GoEleven Kawasaki	Kawasaki ZX-6R		1'42.171	2.859	0.257	7	148,903	226,4
23	74 J. VAN SIKKELERUS	NED	GEMAR Team Lorini	Honda CBR600RR		1'42.447	3.135	0.276	6	148,502	227,4
24	88 C. STANGE	GER	Team GoEleven Kawasaki	Kawasaki ZX-6R					0		

* Qualified to Superpole 2

AIR	Humidity:	51%	Temp:	29°C
TRACK	Condition:	Dry	Temp:	48°C

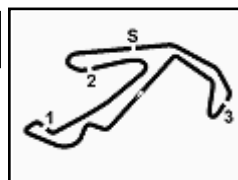
Records	Pole (QP)	2015 J.Cluzel	1'37.482	156,070	Km/h
	Race (RC)	2015 J.Cluzel	1'38.239	154,860	Km/h
	Circuit (QP)	2015 J.Cluzel	1'37.482	156,070	Km/h

Start 07/07/2018 14:00 End 14:17 The results are provisional until the end of the time limit for protests and appeals and the completion of the technical checks.

These data/results cannot be reproduced, stored and/or transmitted in whole or in part by any manner of electronic, mechanical, photocopying, recording, broadcasting or otherwise now known or herein after developed without the previous express consent by the copyright owner, except for reproduction in daily press and regular printed publications on sale to the public within 60 days of the event related to those data/results and always provided that copyright symbol appears together as follows below.

© DORNA WSBK ORGANIZATION Srl 2018





PIRELLI Riviera di Rimini Round, 6 - 8 July 2018

World Supersport - Results Superpole 1

Misano Circuit Sic 58 4.226 m

2 / 2

Session Highlights

Local Time	No. Rider	Description
14.00.00		Start
14.01.51	36 T. GRADINGER	Crashed - Turn 14
14.02.01	36 T. GRADINGER	Re-joined
14.02.31	88 C. STANGE	Crashed - Turn 4
14.04.01	38 H. SOOMER	Lap Cancelled (1'40.264) - Exceeded Track Limits - Turn 16
14.05.47	6 C. PEROLARI	On the Gravel - Re-Joined - Turn 1
14.05.51	10 N. CALERO	On the Gravel - Re-Joined - Turn 1
14.06.26	84 L. CRESSON	Current Lap Cancelled - Exceeded Track Limits - Turn 6
14.09.37	65 M. CANDUCCI	Crashed - Turn 14
14.10.05	65 M. CANDUCCI	Re-joined
14.10.26	65 M. CANDUCCI	BLACK FLAG - Doesn't enter pit lane after crash (art. 1.21.5)
14.11.26	35 S. HILL	Crashed - Turn 4
14.11.42	35 S. HILL	Re-joined
14.12.15	93 R. MERCANDELLI	Crashed - Turn 6
14.13.00	65 M. CANDUCCI	Allowed to continue the practice
14.14.19	63 D. STIRPE	Current Lap Cancelled - Exceeded Track Limits - Turn 6
14.16.21	84 L. CRESSON	Lap Cancelled (1'39.871) - Exceeded Track Limits - Turn 6
14.17.05		End Of Session

Fastest Laps Sequence

No.	Rider	Nat	Team	Bike	Local Time	Time	Gap	Avg
22	E. LAHTI	FIN	Sterkman Motorsport by HRP	Suzuki GSX-R600	14:03'31.721	1'41.240		150,273
47	R. HARTOG	NED	Team Hartog - Against Cancer	Kawasaki ZX-6R	14:03'31.931	1'40.705	-0.535	151,071
15	A. COPPOLA	ITA	GRT Yamaha Official WorldSSP Junior Team	Yamaha YZF R6	14:03'33.471	1'40.645	-0.060	151,161
6	C. PEROLARI	FRA	GMT94 Yamaha	Yamaha YZF R6	14:03'34.297	1'40.579	-0.066	151,260
32	S. MORAIS	POR	Kawasaki Puccetti Racing	Kawasaki ZX-6R	14:03'43.332	1'40.273	-0.306	151,722
93	R. MERCANDELLI	ITA	Scuderia Improve - Firenze Motor	Honda CBR600RR	14:03'46.078	1'40.158	-0.115	151,896
6	C. PEROLARI	FRA	GMT94 Yamaha	Yamaha YZF R6	14:05'14.421	1'40.124	-0.034	151,948
36	T. GRADINGER	AUT	NRT	Yamaha YZF R6	14:08'37.743	1'39.961	-0.163	152,195
36	T. GRADINGER	AUT	NRT	Yamaha YZF R6	14:10'17.267	1'39.524	-0.437	152,864
32	S. MORAIS	POR	Kawasaki Puccetti Racing	Kawasaki ZX-6R	14:14'40.884	1'39.312	-0.212	153,190

Start 07/07/2018 14:00 End 14:17 The results are provisional until the end of the time limit for protests and appeals and the completion of the technical checks.

These data/results cannot be reproduced, stored and/or transmitted in whole or in part by any manner of electronic, mechanical, photocopying, recording, broadcasting or otherwise now known or herein after developed without the previous express consent by the copyright owner, except for reproduction in daily press and regular printed publications on sale to the public within 60 days of the event related to those data/results and always provided that copyright symbol appears together as follows below.

© DORNA WSBK ORGANIZATION Srl 2018

PIRELLI Riviera di Rimini Round, 6 - 8 July 2018
World Supersport - Best Sectors & Speed Superpole 1

Misano Circuit Sic 58 4.226 m

BEST LAP			
1	32 S. MORAIS	Kawasaki ZX-6R	1'39.312
2	78 H. OKUBO	Kawasaki ZX-6R	1'39.498
3	36 T. GRADINGER	Yamaha YZF R6	1'39.524
4	60 L. GABELLINI	Yamaha YZF R6	1'39.781
5	38 H. SOOMER	Honda CBR600RR	1'39.828
6	63 D. STIRPE	MV Agusta F3 675	1'39.883
7	93 R. MERCANDELLI	Honda CBR600RR	1'39.885
8	56 P. SEBESTYEN	Honda CBR600RR	1'40.017
9	22 E. LAHTI	Suzuki GSX-R600	1'40.028
10	6 C. PEROLARI	Yamaha YZF R6	1'40.114
11	86 A. BADOVINI	MV Agusta F3 675	1'40.150
12	15 A. COPPOLA	Yamaha YZF R6	1'40.262
13	47 R. HARTOG	Kawasaki ZX-6R	1'40.264
14	81 L. STAPLEFORD	Yamaha YZF R6	1'40.483
15	84 L. CRESSON	Yamaha YZF R6	1'40.524
16	65 M. CANDUCCI	Yamaha YZF R6	1'40.565
17	19 A. BALDOLINI	Honda CBR600RR	1'40.608
18	10 N. CALERO	Kawasaki ZX-6R	1'40.828
19	77 W. TESSELS	Kawasaki ZX-6R	1'40.839
20	35 S. HILL	Triumph Daytona 675	1'41.672
21	97 R. BODIS	Kawasaki ZX-6R	1'41.914
22	34 J. ITURRIOZ	Kawasaki ZX-6R	1'42.171
23	74 J. VAN SIKKELERUS	Honda CBR600RR	1'42.447
24	88 C. STANGE	Kawasaki ZX-6R	

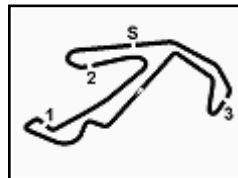
SPEED			
1	84 L. CRESSON	Yamaha YZF R6	237,9
2	36 T. GRADINGER	Yamaha YZF R6	235,8
3	56 P. SEBESTYEN	Honda CBR600RR	235,3
4	81 L. STAPLEFORD	Yamaha YZF R6	235,3
5	32 S. MORAIS	Kawasaki ZX-6R	234,8
6	78 H. OKUBO	Kawasaki ZX-6R	233,8
7	38 H. SOOMER	Honda CBR600RR	233,8
8	47 R. HARTOG	Kawasaki ZX-6R	233,3
9	65 M. CANDUCCI	Yamaha YZF R6	232,8
10	19 A. BALDOLINI	Honda CBR600RR	232,8
11	63 D. STIRPE	MV Agusta F3 675	232,8
12	15 A. COPPOLA	Yamaha YZF R6	232,3
13	93 R. MERCANDELLI	Honda CBR600RR	231,8
14	6 C. PEROLARI	Yamaha YZF R6	231,3
15	77 W. TESSELS	Kawasaki ZX-6R	229,8
16	10 N. CALERO	Kawasaki ZX-6R	229,8
17	22 E. LAHTI	Suzuki GSX-R600	229,3
18	86 A. BADOVINI	MV Agusta F3 675	228,8
19	35 S. HILL	Triumph Daytona 675	228,3
20	74 J. VAN SIKKELERUS	Honda CBR600RR	227,4
21	60 L. GABELLINI	Yamaha YZF R6	226,9
22	34 J. ITURRIOZ	Kawasaki ZX-6R	226,4
23	97 R. BODIS	Kawasaki ZX-6R	223,6

SEG. 1			SEG. 2			SEG. 3			SEG. 4		
1	78 H. OKUBO	26.852	1	32 S. MORAIS	22.856	1	32 S. MORAIS	27.168	1	36 T. GRADINGER	22.064
2	36 T. GRADINGER	26.949	2	36 T. GRADINGER	22.873	2	78 H. OKUBO	27.173	2	60 L. GABELLINI	22.131
3	32 S. MORAIS	26.967	3	84 L. CRESSON	22.883	3	38 H. SOOMER	27.206	3	78 H. OKUBO	22.143
4	47 R. HARTOG	26.983	4	60 L. GABELLINI	22.958	4	93 R. MERCANDELLI	27.279	4	86 A. BADOVINI	22.167
5	63 D. STIRPE	27.068	5	86 A. BADOVINI	22.999	5	36 T. GRADINGER	27.287	5	32 S. MORAIS	22.179
6	60 L. GABELLINI	27.089	6	63 D. STIRPE	23.007	6	47 R. HARTOG	27.306	6	38 H. SOOMER	22.181
7	22 E. LAHTI	27.109	7	56 P. SEBESTYEN	23.016	7	6 C. PEROLARI	27.337	7	15 A. COPPOLA	22.183
8	93 R. MERCANDELLI	27.126	8	65 M. CANDUCCI	23.036	8	56 P. SEBESTYEN	27.362	8	63 D. STIRPE	22.233
9	56 P. SEBESTYEN	27.184	9	93 R. MERCANDELLI	23.041	9	84 L. CRESSON	27.375	9	77 W. TESSELS	22.282
10	65 M. CANDUCCI	27.199	10	6 C. PEROLARI	23.046	10	65 M. CANDUCCI	27.386	10	84 L. CRESSON	22.291
11	84 L. CRESSON	27.201	11	38 H. SOOMER	23.051	11	22 E. LAHTI	27.388	11	93 R. MERCANDELLI	22.311
12	86 A. BADOVINI	27.212	12	78 H. OKUBO	23.085	12	15 A. COPPOLA	27.400	12	56 P. SEBESTYEN	22.316
13	6 C. PEROLARI	27.214	13	15 A. COPPOLA	23.114	13	81 L. STAPLEFORD	27.444	13	22 E. LAHTI	22.326
14	15 A. COPPOLA	27.217	14	19 A. BALDOLINI	23.135	14	63 D. STIRPE	27.476	14	6 C. PEROLARI	22.344
15	38 H. SOOMER	27.271	15	81 L. STAPLEFORD	23.137	15	19 A. BALDOLINI	27.504	15	19 A. BALDOLINI	22.365
16	77 W. TESSELS	27.278	16	47 R. HARTOG	23.145	16	86 A. BADOVINI	27.529	16	47 R. HARTOG	22.418
17	81 L. STAPLEFORD	27.278	17	35 S. HILL	23.150	17	60 L. GABELLINI	27.581	17	81 L. STAPLEFORD	22.452
18	10 N. CALERO	27.295	18	22 E. LAHTI	23.202	18	35 S. HILL	27.686	18	65 M. CANDUCCI	22.453
19	19 A. BALDOLINI	27.394	19	77 W. TESSELS	23.263	19	10 N. CALERO	27.733	19	10 N. CALERO	22.472
20	35 S. HILL	27.510	20	10 N. CALERO	23.328	20	77 W. TESSELS	27.891	20	74 J. VAN SIKKELERUS	22.580
21	97 R. BODIS	27.565	21	34 J. ITURRIOZ	23.471	21	97 R. BODIS	28.012	21	34 J. ITURRIOZ	22.624
22	34 J. ITURRIOZ	27.673	22	97 R. BODIS	23.487	22	34 J. ITURRIOZ	28.218	22	35 S. HILL	22.631
23	74 J. VAN SIKKELERUS	27.734	23	74 J. VAN SIKKELERUS	23.491	23	88 C. STANGE	28.263	23	97 R. BODIS	22.672
			24	88 C. STANGE	24.125	24	74 J. VAN SIKKELERUS	28.330	24	88 C. STANGE	23.696

07/07/2018

These data/results cannot be reproduced, stored and/or transmitted in whole or in part by any manner of electronic, mechanical, photocopying, recording, broadcasting or otherwise now known or herein after developed without the previous express consent by the copyright owner, except for reproduction in daily press and regular printed publications on sale to the public within 60 days of the event related to those data/results and always provided that copyright symbol appears together as follows below.

© DORNA WSBK ORGANIZATION Srl 2018



PIRELLI Riviera di Rimini Round, 6 - 8 July 2018

World Supersport - Ideal Times Superpole 1

Misano Circuit Sic 58 4.226 m

No.	Rider	Nat	Bike	Seg. 1	Seg. 2	Seg. 3	Seg. 4	Ideal Time		
				Diff. 1	Diff. 2	Diff. 3	Diff. 4	Best Lap	Pos.	Diff.
1	32 S. MORAIS	POR	Kawasaki ZX-6R	26.967 0.043	22.856	27.168 0.099	22.179	1'39.170 1'39.312	2	0.142
2	36 T. GRADINGER	AUT	Yamaha YZF R6	26.949	22.873	27.287 0.208	22.064 0.143	1'39.173 1'39.524	4	0.351
3	78 H. OKUBO	JPN	Kawasaki ZX-6R	26.852	23.085	27.173 0.213	22.143 0.032	1'39.253 1'39.498	3	0.245
4	38 H. SOOMER	EST	Honda CBR600RR	27.271	23.051 0.085	27.206	22.181 0.034	1'39.709 1'39.828	6	0.119
5	84 L. CRESSON	BEL	Yamaha YZF R6	27.201 0.212	22.883 0.366	27.375 0.196	22.291	1'39.750 1'40.524	16	0.774
6	93 R. MERCANDELLI	ITA	Honda CBR600RR	27.126 0.128	23.041	27.279	22.311	1'39.757 1'39.885	8	0.128
7	60 L. GABELLINI	ITA	Yamaha YZF R6	27.089	22.958	27.581	22.131 0.022	1'39.759 1'39.781	5	0.022
8	63 D. STIRPE	ITA	MV Agusta F3 675	27.068 0.069	23.007	27.476	22.233 0.030	1'39.784 1'39.883	7	0.099
9	47 R. HARTOG	NED	Kawasaki ZX-6R	26.983 0.305	23.145 0.023	27.306 0.084	22.418	1'39.852 1'40.264	14	0.412
10	56 P. SEBESTYEN	HUN	Honda CBR600RR	27.184 0.139	23.016	27.362	22.316	1'39.878 1'40.017	9	0.139
11	86 A. BADOVINI	ITA	MV Agusta F3 675	27.212 0.174	22.999	27.529 0.069	22.167	1'39.907 1'40.150	12	0.243
12	15 A. COPPOLA	ITA	Yamaha YZF R6	27.217	23.114 0.215	27.400 0.076	22.183 0.057	1'39.914 1'40.262	13	0.348
13	6 C. PEROLARI	FRA	Yamaha YZF R6	27.214	23.046	27.337 0.173	22.344	1'39.941 1'40.114	11	0.173
14	22 E. LAHTI	FIN	Suzuki GSX-R600	27.109	23.202	27.388	22.326 0.003	1'40.025 1'40.028	10	0.003
15	65 M. CANDUCCI	ITA	Yamaha YZF R6	27.199 0.235	23.036 0.181	27.386 0.075	22.453	1'40.074 1'40.565	17	0.491
16	81 L. STAPLEFORD	GBR	Yamaha YZF R6	27.278	23.137 0.154	27.444 0.018	22.452	1'40.311 1'40.483	15	0.172
17	19 A. BALDOLINI	ITA	Honda CBR600RR	27.394	23.135 0.140	27.504 0.070	22.365	1'40.398 1'40.608	18	0.210
18	77 W. TESSELS	NED	Kawasaki ZX-6R	27.278	23.263 0.064	27.891	22.282 0.061	1'40.714 1'40.839	20	0.125
19	10 N. CALERO	ESP	Kawasaki ZX-6R	27.295	23.328	27.733	22.472	1'40.828 1'40.828	19	
20	35 S. HILL	GBR	Triumph Daytona 675	27.510	23.150 0.257	27.686	22.631 0.438	1'40.977 1'41.672	21	0.695
21	97 R. BODIS	HUN	Kawasaki ZX-6R	27.565 0.094	23.487	28.012	22.672 0.084	1'41.736 1'41.914	22	0.178
22	34 J. ITURRIOZ	ARG	Kawasaki ZX-6R	27.673	23.471	28.218	22.624 0.185	1'41.986 1'42.171	23	0.185
23	74 J. VAN SIKKELERUS	NED	Honda CBR600RR	27.734 0.185	23.491	28.330 0.082	22.580 0.045	1'42.135 1'42.447	24	0.312
Overall Ideal Time				26.852	22.856	27.168	22.064	1'38.940		

07/07/2018

These data/results cannot be reproduced, stored and/or transmitted in whole or in part by any manner of electronic, mechanical, photocopying, recording, broadcasting or otherwise now known or herein after developed without the previous express consent by the copyright owner, except for reproduction in daily press and regular printed publications on sale to the public within 60 days of the event related to those data/results and always provided that copyright symbol appears together as follows below.

© DORNA WSBK ORGANIZATION Srl 2018

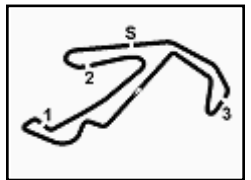
FICR PERUGIA TIMING



Official Tyre Supplier



Official Timekeeper



PIRELLI Riviera di Rimini Round, 6 - 8 July 2018

World Supersport - Chronological Analysis Superpole 1

Misano Circuit Sic 58 4.226 m

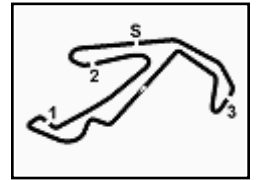
1 / 2

1° 32 S. MORAIS (1'39.312)								7° 93 R. MERCANELLI (1'39.885)							
Lap	Seg.1	Seg.2	Seg.3	Seg.4	Lap Time	km/h	Local Time	Lap	Seg.1	Seg.2	Seg.3	Seg.4	Lap Time	km/h	Local Time
1		24.760	27.942	29.726		232,3	14:02'03.059	1							13:59'53.993
2	27.300	23.272	27.336	22.365	1'40.273	234,8	14:03'43.332	2	49.965	28.150	29.823	23.989	2'11.927P	223,1	14:02'05.920
3	27.346	22.951	27.416	22.446	1'40.159	232,8	14:05'23.491	3	27.274	23.181	27.327	22.376	1'40.158	231,8	14:03'46.078
4	27.436	23.219	27.548	34.740	1'52.943P	231,8	14:07'16.434	4	27.406	24.528	28.286	2'48.301	4'08.521P	229,3	14:07'54.599
5	2'50.778	23.401	27.827	23.538	4'05.544P	230,8	14:11'21.978	5	42.595	23.595	27.651	22.497	1'56.338P	226,9	14:09'50.937
6	26.967	23.078	27.168	22.381	1'39.594	233,8	14:13'01.572	6	27.254	23.041	27.279	22.311	1'39.885	228,8	14:11'30.822
7	27.010	22.856	27.267	22.179	1'39.312	232,3	14:14'40.884								
8	29.530	26.076	29.043	38.137	2'02.786P	215,1	14:16'43.670								
2° 78 H. OKUBO (1'39.498)								8° 56 P. SEBESTYEN (1'40.017)							
Lap	Seg.1	Seg.2	Seg.3	Seg.4	Lap Time	km/h	Local Time	Lap	Seg.1	Seg.2	Seg.3	Seg.4	Lap Time	km/h	Local Time
1		24.206	28.085	25.695		233,8	14:01'59.574	1		25.159	29.490	26.439		229,8	14:02'03.713
2	27.615	24.899	28.313	25.338	1'46.165	229,3	14:03'45.739	2	27.822	23.490	27.483	22.589	1'41.384	232,3	14:03'45.097
3	27.891	23.205	27.409	22.291	1'40.796	233,8	14:05'26.535	3	27.596	23.195	27.560	22.663	1'41.014	235,3	14:05'26.111
4	29.459	24.261	27.589	36.032	1'57.341P	232,3	14:07'23.876	4	28.174	23.987	28.480	2'41.889	4'02.530P	228,3	14:09'28.641
5	3'24.588	23.680	27.664	22.304	4'38.236P	230,8	14:12'02.112	5	51.820	23.935	28.257	22.556	2'06.568P	226,9	14:11'35.209
6	27.116	23.137	27.173	22.143	1'39.569	230,3	14:13'41.681	6	27.412	23.325	27.686	22.511	1'40.934	230,3	14:13'16.143
7	26.852	23.085	27.386	22.175	1'39.498	233,8	14:15'21.179	7	27.323	23.016	27.362	22.316	1'40.017	231,3	14:14'56.160
8								8	27.184	23.066	27.431	22.407	1'40.088	231,3	14:16'36.248
3° 36 T. GRADINGER (1'39.524)								9° 22 E. LAHTI (1'40.028)							
Lap	Seg.1	Seg.2	Seg.3	Seg.4	Lap Time	km/h	Local Time	Lap	Seg.1	Seg.2	Seg.3	Seg.4	Lap Time	km/h	Local Time
1							13:59'47.854	1		23.787	27.891	22.616		226,4	14:01'50.481
2	52.041	24.003	27.430	3'26.165	5'09.639P	234,8	14:04'57.493	2	27.623	23.389	27.701	22.527	1'41.240	226,9	14:03'31.721
3	46.650	23.488	27.611	22.540	2'00.289P	233,3	14:06'57.782	3	27.419	23.336	27.625	22.537	1'40.917	228,3	14:05'12.638
4	27.196	23.076	27.462	22.227	1'39.961	233,8	14:08'37.743	4	28.633	23.424	27.950	3'36.762	4'56.769P	225,9	14:10'09.407
5	26.949	22.873	27.495	22.207	1'39.524	234,3	14:10'17.267	5	43.313	23.489	27.951	23.035	1'57.788P	225,9	14:12'07.195
6	27.483	25.278	30.929	22.498	1'46.188	183,7	14:12'03.455	6	27.109	23.202	27.388	22.329	1'40.028	229,3	14:13'47.223
7	27.295	22.920	27.287	22.064	1'39.566	235,8	14:13'43.021	7	27.234	23.225	27.524	22.326	1'40.309	228,8	14:15'27.532
8	27.281	23.060	27.610	22.330	1'40.281	234,8	14:15'23.302								
4° 60 L. GABELLINI (1'39.781)								10° 6 C. PEROLARI (1'40.114)							
Lap	Seg.1	Seg.2	Seg.3	Seg.4	Lap Time	km/h	Local Time	Lap	Seg.1	Seg.2	Seg.3	Seg.4	Lap Time	km/h	Local Time
1		24.293	28.245	23.791		230,3	14:01'58.394	1		24.204	27.855	22.665		227,8	14:01'53.718
2	27.163	23.233	27.968	22.272	1'40.636	226,4	14:03'39.030	2	27.389	23.325	27.432	22.433	1'40.579	230,8	14:03'34.297
3	27.116	23.228	27.651	22.131	1'40.126	226,9	14:05'19.156	3	27.296	23.068	27.337	22.423	1'40.124	230,8	14:05'14.421
4	27.227	23.270	28.090	35.971	1'54.558P	224,1	14:07'13.714	4	29.964	23.616	28.879	1'37.010	2'59.469P	229,8	14:08'13.890
5	3'28.173	23.644	28.217	22.295	4'42.329P	222,2	14:11'56.043	5	46.799	23.692	29.054	24.861	2'04.406P	224,5	14:10'18.296
6	27.508	23.106	27.861	22.150	1'40.625	225,5	14:13'36.668	6	27.214	23.046	27.510	22.344	1'40.114	228,8	14:11'58.410
7	27.089	22.958	27.581	22.153	1'39.781	226,4	14:15'16.449	7	27.233	23.049	27.498	22.356	1'40.136	231,3	14:13'38.546
8								8	27.922	23.607	27.761	22.578	1'41.868	230,3	14:15'20.414
5° 38 H. SOOMER (1'39.828)								11° 86 A. BADOVINI (1'40.150)							
Lap	Seg.1	Seg.2	Seg.3	Seg.4	Lap Time	km/h	Local Time	Lap	Seg.1	Seg.2	Seg.3	Seg.4	Lap Time	km/h	Local Time
1		24.033	28.167	23.521		229,3	14:02'06.285	1							14:00'45.684
2	27.535	23.051	27.375	22.303	1'40.264C	231,8	14:03'46.549	2	43.614	23.728	28.089	22.328	1'57.759P	226,4	14:02'43.443
3	27.341	23.256	27.325	22.267	1'40.189	233,8	14:05'26.738	3	27.212	23.303	27.639	22.365	1'40.519	226,4	14:04'23.962
4	28.583	24.487	28.421	34.932	1'56.423P	229,8	14:07'23.161	4	27.292	23.070	27.785	22.312	1'40.459	227,4	14:06'04.421
5	2'33.150	23.615	27.978	22.304	3'47.047P	227,4	14:11'10.208	5	27.770	23.196	28.158	1'41.503	3'00.627P	224,5	14:09'05.048
6	27.418	23.142	27.413	22.383	1'40.356	230,3	14:12'50.564	6	43.331	25.895	28.424	22.748	2'00.398P	226,4	14:11'05.446
7	27.520	23.063	27.361	22.181	1'40.125	230,3	14:14'30.689	7	27.386	22.999	27.598	22.167	1'40.150	227,8	14:12'45.596
8	27.271	23.136	27.206	22.215	1'39.828	230,3	14:16'10.517	8	27.350	23.129	27.565	22.281	1'40.325	228,3	14:14'25.921
9								9	27.367	23.030	27.529	22.254	1'40.180	228,8	14:16'06.101
6° 63 D. STIRPE (1'39.883)								12° 15 A. COPPOLA (1'40.262)							
Lap	Seg.1	Seg.2	Seg.3	Seg.4	Lap Time	km/h	Local Time	Lap	Seg.1	Seg.2	Seg.3	Seg.4	Lap Time	km/h	Local Time
1		24.594	28.089	29.711		232,3	14:02'03.349	1		23.920	27.814	22.353		227,4	14:01'52.826
2	27.912	23.303	27.547	22.468	1'41.230	232,8	14:03'44.579	2	27.933	23.129	27.400	22.183	1'40.645	227,8	14:03'33.471
3	27.564	23.080	27.909	22.571	1'41.124	230,3	14:05'25.703	3	27.276	23.114	27.701	22.277	1'40.368	228,3	14:05'13.839
4	29.028	23.884	28.397	37.035	1'58.344P	228,3	14:07'24.047	4	28.257	23.628	28.471	42.457	2'02.813P	220,9	14:07'16.652
5	2'55.811	23.570	28.048	22.330	4'09.759P	228,3	14:11'33.806	5	3'25.424	23.785	28.189	22.542	4'39.940P	225,0	14:11'56.592
6	27.104	23.087	27.598	22.233	1'40.022	227,8	14:13'13.828	6	27.631	23.355	27.553	22.346	1'40.885	232,3	14:13'37.477
7	27.068	23.071	27.692	22.204	1'40.035C	230,3	14:14'53.863	7	27.217	23.329	27.476	22.240	1'40.262	229,3	14:15'17.739
8	27.137	23.007	27.476	22.263	1'39.883	230,8	14:16'33.746								

07/07/2018 P = Pits In/Out - C = Lap Time Cancelled

These data/results cannot be reproduced, stored and/or transmitted in whole or in part by any manner of electronic, mechanical, photocopying, recording, broadcasting or otherwise now known or herein after developed without the previous express consent by the copyright owner, except for reproduction in daily press and regular printed publications on sale to the public within 60 days of the event related to those data/results and always provided that copyright symbol appears together as follows below.

© DORNA WSBK ORGANIZATION Srl 2018



PIRELLI Riviera di Rimini Round, 6 - 8 July 2018
World Supersport - Chronological Analysis Superpole 1

Misano Circuit Sic 58 4.226 m

13° 47 R. HARTOG (1'40.264)							
Lap	Seg.1	Seg.2	Seg.3	Seg.4	Lap Time	km/h	Local Time
1		23.885	27.646	22.636		228,8	14:01'51.226
2	27.264	23.336	27.487	22.618	1'40.705	231,8	14:03'31.931
3	27.520	23.281	27.557	2'51.204	4'09.562P	233,3	14:07'41.493
4	42.756	23.814	27.567	22.521	1'56.658P	227,8	14:09'38.151
5	27.288	23.168	27.390	22.418	1'40.264	229,8	14:11'18.415
6	26.983	23.145	27.449	22.801	1'40.378	230,3	14:12'58.793
7	27.274	23.228	27.306	22.508	1'40.316	229,8	14:14'39.109
8	27.316	23.263	27.367	22.973	1'40.919	232,8	14:16'20.028

19° 77 W. TESSELS (1'40.839)							
Lap	Seg.1	Seg.2	Seg.3	Seg.4	Lap Time	km/h	Local Time
1		24.396	28.998	23.477		229,8	14:01'59.182
2	27.726	23.411	28.112	22.528	1'41.777	229,8	14:03'40.959
3	27.563	23.646	28.218	22.478	1'41.905	227,8	14:05'22.864
4	33.638	24.942	28.624	2'22.183	3'49.387P	228,3	14:09'12.251
5	44.420	23.697	28.009	22.282	1'58.408P	227,8	14:11'10.659
6	27.278	23.327	27.891	22.343	1'40.839	228,3	14:12'51.498
7	27.393	23.288	27.979	22.351	1'41.011	226,4	14:14'32.509
8	27.505	23.263	28.058	22.443	1'41.269	226,9	14:16'13.778

14° 81 L. STAPLEFORD (1'40.483)							
Lap	Seg.1	Seg.2	Seg.3	Seg.4	Lap Time	km/h	Local Time
1		24.602	28.292	22.895		226,9	14:02'07.843
2	27.383	23.440	27.444	22.470	1'40.737	230,8	14:03'48.580
3	27.363	23.137	27.470	22.623	1'40.593	232,3	14:05'29.173
4	28.746	23.975	27.787	35.602	1'56.110P	235,3	14:07'25.283
5	2'27.825	23.867	28.141	22.732	3'42.565P	228,3	14:11'07.848
6	28.066	26.980	28.550	23.034	1'46.630	229,3	14:12'54.478
7	27.278	23.291	27.462	22.452	1'40.483	230,8	14:14'34.961
8	27.408	23.311	27.593	22.608	1'40.920	230,3	14:16'15.881

20° 35 S. HILL (1'41.672)							
Lap	Seg.1	Seg.2	Seg.3	Seg.4	Lap Time	km/h	Local Time
1		24.546	28.966	25.505		225,0	14:02'01.884
2	27.510	23.407	27.686	23.069	1'41.672	228,3	14:03'43.556
3	27.805	23.150	28.251	22.714	1'41.920	226,9	14:05'25.476
4	30.826	24.264	27.957	36.822	1'59.869P	227,4	14:07'25.345
5	2'13.080	23.800	27.789	22.631	3'27.300P	224,1	14:10'52.645
6	58.541	26.922	29.916	38.200	2'33.579P	221,3	14:13'26.224
7					3'35.712P		14:17'01.936

15° 84 L. CRESSON (1'40.524)							
Lap	Seg.1	Seg.2	Seg.3	Seg.4	Lap Time	km/h	Local Time
1							14:00'11.129
2	44.909	24.104	27.682	22.846	1'59.541P	234,3	14:02'10.670
3	27.800	23.467	27.546	22.426	1'41.239	235,8	14:03'51.909
4	27.469	23.305	27.518	22.447	1'40.739	236,8	14:05'32.648
5	27.509	23.234	27.548	22.582	1'40.873C	237,9	14:07'13.521
6	27.476	23.332	28.107	1'46.923	3'05.838P	233,8	14:10'19.359
7	45.050	29.386	36.410	25.476	2'16.322P	151,7	14:12'35.681
8	27.413	23.249	27.571	22.291	1'40.524	234,8	14:14'16.205
9	27.201	22.883	27.375	22.412	1'39.871C	235,8	14:15'56.076

21° 97 R. BODIS (1'41.914)							
Lap	Seg.1	Seg.2	Seg.3	Seg.4	Lap Time	km/h	Local Time
1							14:00'05.508
2	51.487	24.855	29.082	23.201	2'08.625P	222,7	14:02'14.133
3	28.103	23.991	28.673	22.885	1'43.652	223,6	14:03'57.785
4	27.943	23.835	28.528	23.024	1'43.330	223,1	14:05'41.115
5	28.856	24.840	28.780	22.785	1'45.261	220,4	14:07'26.376
6	27.565	23.787	28.418	22.672	1'42.442	221,3	14:09'08.818
7	31.577	24.392	28.479	22.696	1'47.144	220,9	14:10'55.962
8	27.852	23.793	28.424	22.841	1'42.910	221,8	14:12'38.872
9	27.746	23.707	28.192	22.779	1'42.424	222,7	14:14'21.296
10	27.659	23.487	28.012	22.756	1'41.914	222,7	14:16'03.210

16° 65 M. CANDUCCI (1'40.565)							
Lap	Seg.1	Seg.2	Seg.3	Seg.4	Lap Time	km/h	Local Time
1							14:04'26.878
2	45.638	24.275	28.022	22.803	2'00.738P	231,3	14:06'27.616
3	27.434	23.217	27.461	22.453	1'40.565	232,3	14:08'08.181
4	27.199	23.036	27.386	58.174	2'15.795C	231,8	14:10'23.976
5	28.240	23.535	31.890	52.959	2'16.624CP	225,9	14:12'40.600
6	44.041	23.467	27.759	22.905	1'58.172P	232,8	14:14'38.772
7	27.515	23.185	27.495	22.870	1'41.065	232,8	14:16'19.837

22° 34 J. ITURRIOZ (1'42.171)							
Lap	Seg.1	Seg.2	Seg.3	Seg.4	Lap Time	km/h	Local Time
1		24.712	29.115	22.866		225,9	14:01'55.277
2	28.343	24.541	29.098	22.952	1'44.934	222,2	14:03'40.211
3	27.790	24.026	28.780	22.644	1'43.240	226,4	14:05'23.451
4	34.850	26.152	29.863	37.910	2'08.775P	223,1	14:07'32.226
5	2'25.718	24.591	31.100	25.407	3'46.816P	205,3	14:11'19.042
6	27.933	23.535	28.365	22.906	1'42.739	224,5	14:13'01.781
7	27.673	23.471	28.218	22.809	1'42.171	225,0	14:14'43.952
8	27.769	23.758	28.523	22.624	1'42.674	224,5	14:16'26.626

17° 19 A. BALDOLINI (1'40.608)							
Lap	Seg.1	Seg.2	Seg.3	Seg.4	Lap Time	km/h	Local Time
1		24.875	28.344	24.559		233,8	14:01'58.623
2	27.501	23.233	27.975	22.426	1'41.135	232,8	14:03'39.758
3	27.394	23.275	27.574	22.365	1'40.608	230,3	14:05'20.366
4	27.566	23.579	27.813	35.954	1'54.912P	229,3	14:07'15.278
5	3'27.657	23.615	28.135	22.505	4'41.912P	228,3	14:11'57.190
6	27.456	23.469	27.740	22.608	1'41.273	231,3	14:13'38.463
7	27.652	23.135	27.504	22.371	1'40.662	229,3	14:15'19.125

23° 74 J. VAN SIKKELERUS (1'42.447)							
Lap	Seg.1	Seg.2	Seg.3	Seg.4	Lap Time	km/h	Local Time
1		24.818	29.398	24.406		226,9	14:01'59.909
2	27.961	23.724	28.511	22.905	1'43.101	226,4	14:03'43.010
3	28.923	23.988	29.697	42.489	2'05.097P	225,0	14:05'48.107
4	3'07.684	24.267	29.379	23.507	4'24.837P	220,9	14:10'12.944
5	27.919	23.491	28.412	22.625	1'42.447	225,0	14:11'55.391
6	28.011	23.793	28.469	22.580	1'42.853	226,4	14:13'38.244
7	27.734	24.368	28.330	30.795	1'51.227	227,4	14:15'29.471

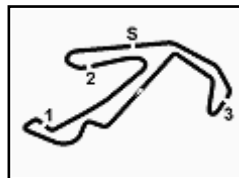
18° 10 N. CALERO (1'40.828)							
Lap	Seg.1	Seg.2	Seg.3	Seg.4	Lap Time	km/h	Local Time
1		24.459	28.664	23.851		232,8	14:01'58.826
2	27.660	23.422	27.883	22.509	1'41.474	229,3	14:03'40.300
3	27.476	23.503	28.081	22.688	1'41.748	227,4	14:05'22.048
4	32.876	27.929	29.854	40.088	2'10.747P	226,4	14:07'32.795
5	2'15.858	25.775	28.521	22.826	3'32.980P	229,8	14:11'05.775
6	27.295	23.328	27.733	22.472	1'40.828	227,4	14:12'46.603
7	27.490	23.809	28.285	22.585	1'42.169	223,1	14:14'28.772
8	28.754	24.916	29.876	24.663	1'48.209	224,1	14:16'16.981

24° 88 C. STANGE							
Lap	Seg.1	Seg.2	Seg.3	Seg.4	Lap Time	km/h	Local Time
1		24.125	28.263	23.696		231,3	14:01'56.276

07/07/2018 P = Pits In/Out - C = Lap Time Cancelled

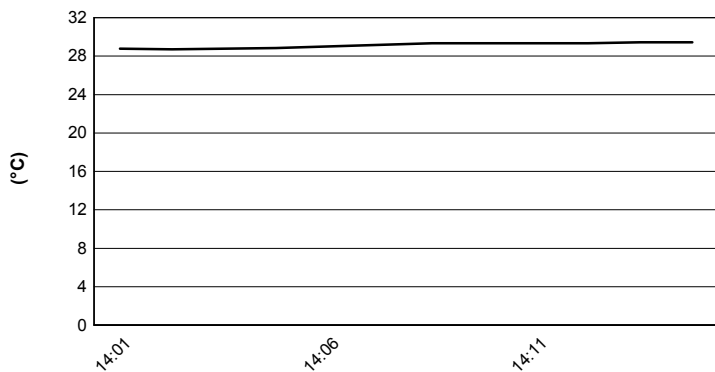
These data/results cannot be reproduced, stored and/or transmitted in whole or in part by any manner of electronic, mechanical, photocopying, recording, broadcasting or otherwise now known or herein after developed without the previous express consent by the copyright owner, except for reproduction in daily press and regular printed publications on sale to the public within 60 days of the event related to those data/results and always provided that copyright symbol appears together as follows below.

© DORNA WSBK ORGANIZATION Srl 2018

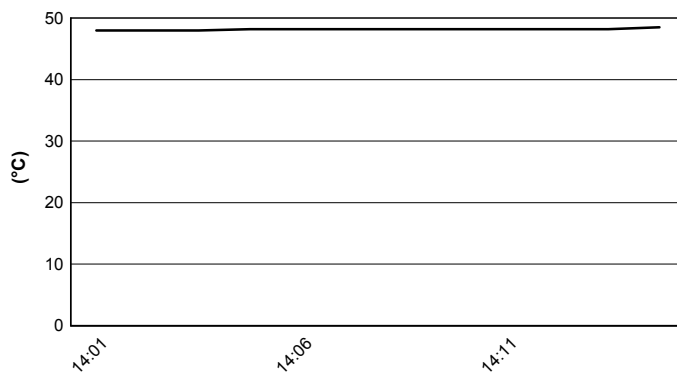


PIRELLI Riviera di Rimini Round, 6 - 8 July 2018
World Supersport - Weather Report Superpole 1
 Session started 14:00 - Session ended 14:17

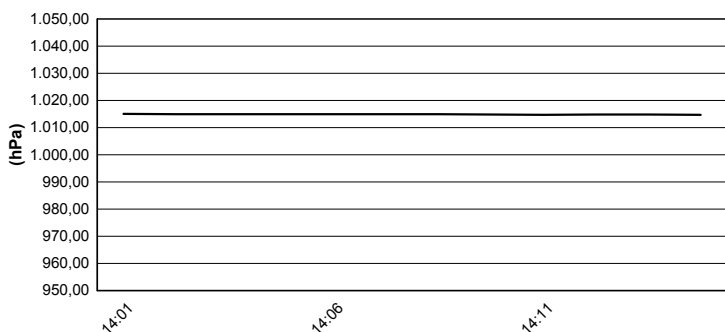
Air Temperature



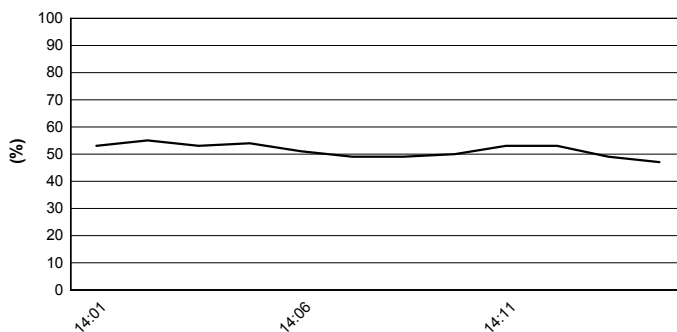
Track Temperature



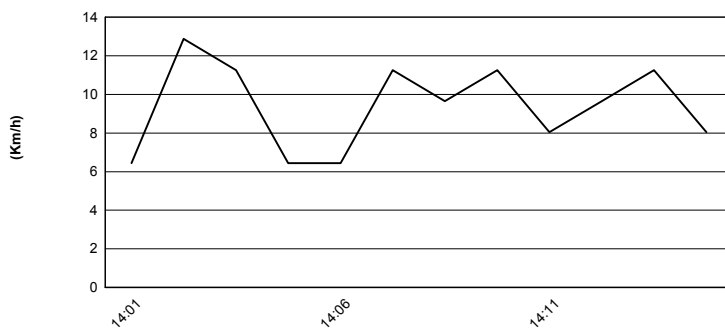
Air Pressure



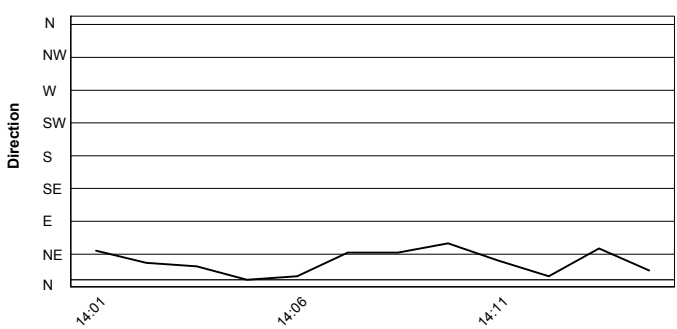
Humidity



Wind Speed



Wind Direction



07/07/2018

These data/results cannot be reproduced, stored and/or transmitted in whole or in part by any manner of electronic, mechanical, photocopying, recording, broadcasting or otherwise now known or herein after developed without the previous express consent by the copyright owner, except for reproduction in daily press and regular printed publications on sale to the public within 60 days of the event related to those data/results and always provided that copyright symbol appears together as follows below.

© DORNA WSBK ORGANIZATION Srl 2018

