

PIRELLI Riviera di Rimini Round, 6 - 8 July 2018

World Supersport - Results Warm Up

Misano Circuit Sic 58 4.226 m

1 / 2

No.	Rider	Nat	Team	Bike	Class	Time	Gap	Rel.	Laps	Speed	
										Avg	Max
1	11 S. CORTESE	GER	Kallio Racing	Yamaha YZF R6		1'38.045			8	155,170	235,8
2	64 F. CARICASULO	ITA	GRT Yamaha Official WorldSSP Team	Yamaha YZF R6		1'38.169	0.124	0.124	9	154,974	238,4
3	144 L. MAHIAS	FRA	GRT Yamaha Official WorldSSP Team	Yamaha YZF R6		1'38.229	0.184	0.060	9	154,879	236,3
4	16 J. CLUZEL	FRA	NRT	Yamaha YZF R6		1'38.268	0.223	0.039	9	154,817	241,1
5	3 R. DE ROSA	ITA	MV Agusta Reparto Corse by Vamag	MV Agusta F3 675		1'38.438	0.393	0.170	9	154,550	234,3
6	43 S. VALTULINI	ITA	Pleo Racing Team	Kawasaki ZX-6R		1'38.561	0.516	0.123	8	154,357	239,5
7	21 R. KRUMMENACHER	SUI	BARDAHL Evan Bros. WorldSSP Team	Yamaha YZF R6		1'38.657	0.612	0.096	8	154,207	236,8
8	36 T. GRADINGER	AUT	NRT	Yamaha YZF R6		1'38.837	0.792	0.180	9	153,926	237,4
9	13 A. WEST	AUS	EAB antwest Racing	Kawasaki ZX-6R		1'39.122	1.077	0.285	8	153,484	231,8
10	42 M. BUSSOLOTTI	ITA	Team ROSSO CORSA	Yamaha YZF R6		1'39.335	1.290	0.213	9	153,154	234,8
11	6 C. PEROLARI	FRA	GMT94 Yamaha	Yamaha YZF R6		1'39.394	1.349	0.059	7	153,064	234,8
12	32 S. MORAIS	POR	Kawasaki Puccetti Racing	Kawasaki ZX-6R		1'39.471	1.426	0.077	8	152,945	234,8
13	81 L. STAPLEFORD	GBR	Profile Racing	Yamaha YZF R6		1'39.520	1.475	0.049	8	152,870	237,4
14	78 H. OKUBO	JPN	Kawasaki Puccetti Racing	Kawasaki ZX-6R		1'39.532	1.487	0.012	7	152,851	236,8
15	86 A. BADOVINI	ITA	MV Agusta Reparto Corse by Vamag	MV Agusta F3 675		1'39.615	1.570	0.083	9	152,724	231,8
16	111 K. SMITH	GBR	CIA Landlord Insurance Honda	Honda CBR600RR		1'39.628	1.583	0.013	7	152,704	235,3
17	84 L. CRESSON	BEL	Kallio Racing	Yamaha YZF R6		1'39.704	1.659	0.076	8	152,588	242,2
18	60 L. GABELLINI	ITA	G.A.S. Racing Team	Yamaha YZF R6		1'39.708	1.663	0.004	8	152,582	229,8
19	47 R. HARTOG	NED	Team Hartog - Against Cancer	Kawasaki ZX-6R	ESS	1'39.760	1.715	0.052	8	152,502	234,3
20	56 P. SEBESTYEN	HUN	CIA Landlord Insurance Honda	Honda CBR600RR		1'39.839	1.794	0.079	8	152,381	235,3
21	19 A. BALDOLINI	ITA	GEMAR Team Lorini	Honda CBR600RR		1'40.115	2.070	0.276	7	151,961	232,8
22	65 M. CANDUCCI	ITA	Team Rosso e Nero	Yamaha YZF R6		1'40.168	2.123	0.053	8	151,881	236,8
23	22 E. LAHTI	FIN	Sterkman Motorsport by HRP	Suzuki GSX-R600	ESS	1'40.184	2.139	0.016	9	151,857	232,3
24	38 H. SOOMER	EST	Racedays	Honda CBR600RR		1'40.190	2.145	0.006	7	151,847	232,3
25	10 N. CALERO	ESP	Orelac Racing VerdNatura	Kawasaki ZX-6R		1'40.271	2.226	0.081	7	151,725	233,3
26	15 A. COPPOLA	ITA	GRT Yamaha Official WorldSSP Junior Team	Yamaha YZF R6	ESS	1'40.359	2.314	0.088	8	151,592	231,8
27	93 R. MERCANDELLI	ITA	Scuderia Improve - Firenze Motor	Honda CBR600RR		1'40.562	2.517	0.203	8	151,286	232,8
28	35 S. HILL	GBR	Profile Racing	Triumph Daytona 675		1'40.574	2.529	0.012	8	151,268	232,3
29	63 D. STIRPE	ITA	Extreme Racing BARDAHL	MV Agusta F3 675		1'40.671	2.626	0.097	8	151,122	231,3
30	77 W. TESSELS	NED	Chromeburner Wayne's Racingteam MitM	Kawasaki ZX-6R	ESS	1'40.704	2.659	0.033	8	151,072	230,3
31	34 J. ITURRIOZ	ARG	Team GoEleven Kawasaki	Kawasaki ZX-6R		1'41.284	3.239	0.580	8	150,207	229,8
32	88 C. STANGE	GER	Team GoEleven Kawasaki	Kawasaki ZX-6R		1'41.778	3.733	0.494	8	149,478	232,3
33	97 R. BODIS	HUN	NORDFILM Packaging SSP Hungary Racing	Kawasaki ZX-6R	ESS	1'41.928	3.883	0.150	8	149,258	226,4
34	74 J. VAN SIKKELERUS	NED	GEMAR Team Lorini	Honda CBR600RR		1'42.986	4.941	1.058	7	147,725	221,8

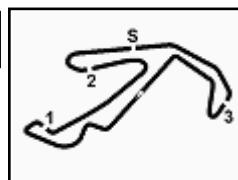
AIR	Humidity:	61%	Temp:	25°C
TRACK	Condition:	Dry	Temp:	31°C

Records	Pole (QP)	2015 J.Cluzel	1'37.482	156,070	Km/h
	Race (RC)	2015 J.Cluzel	1'38.239	154,860	Km/h
	Circuit (QP)	2015 J.Cluzel	1'37.482	156,070	Km/h

Start 08/07/2018 09:10 End 09:26 The results are provisional until the end of the time limit for protests and appeals and the completion of the technical checks.

These data/results cannot be reproduced, stored and/or transmitted in whole or in part by any manner of electronic, mechanical, photocopying, recording, broadcasting or otherwise now known or herein after developed without the previous express consent by the copyright owner, except for reproduction in daily press and regular printed publications on sale to the public within 60 days of the event related to those data/results and always provided that copyright symbol appears together as follows below.

© DORNA WSBK ORGANIZATION Srl 2018



PIRELLI Riviera di Rimini Round, 6 - 8 July 2018

World Supersport - Results Warm Up

Misano Circuit Sic 58 4.226 m

2 / 2

Session Highlights

Local Time	No. Rider	Description
09.10.00		Start
09.10.46		WorldSSP Pit Intervention Time: 1min 18secs
09.13.06	97 R. BODIS	Current Lap Cancelled - Exceeded Track Limits - Turn 6
09.16.15	38 H. SOOMER	Lap Cancelled (1'53.642) - Exceeded Track Limits - Turn 6
09.16.20	97 R. BODIS	Lap Cancelled (1'42.587) - Exceeded Track Limits - Turn 6
09.16.25	42 M. BUSSOLOTTI	Lap Cancelled (1'51.783) - Exceeded Track Limits - Turn 6
09.18.23	60 L. GABELLINI	Lap Cancelled (1'39.672) - Exceeded Track Limits - Turn 6
09.18.26	97 R. BODIS	Lap Cancelled (1'42.550) - Exceeded Track Limits - Turn 6
09.18.29	32 S. MORAIS	Lap Cancelled (1'39.980) - Exceeded Track Limits - Turn 6
09.18.33	56 P. SEBESTYEN	Lap Cancelled (1'39.885) - Exceeded Track Limits - Turn 6
09.19.13	78 H. OKUBO	On the Gravel - Re-Joined - Turn 1
09.19.27	84 L. CRESSON	Lap Cancelled (1'39.614) - Exceeded Track Limits - Turn 6
09.19.31	93 R. MERCANELLI	Lap Cancelled (1'40.314) - Exceeded Track Limits - Turn 6
09.20.33	34 J. ITURRIOZ	Lap Cancelled (1'42.928) - Exceeded Track Limits - Turn 6
09.23.00	34 J. ITURRIOZ	Current Lap Cancelled - Exceeded Track Limits - Turn 6
09.24.54	13 A. WEST	On the Gravel - Re-Joined - Turn 1
09.24.54	32 S. MORAIS	On the Gravel - Re-Joined - Turn 1
09.26.37	34 J. ITURRIOZ	Lap Cancelled (2'13.466) - Exceeded Track Limits - Turn 6
09.26.43	78 H. OKUBO	Lap Cancelled (1'39.296) - Exceeded Track Limits - Turn 6
09.26.47	36 T. GRADINGER	Lap Cancelled (1'54.497) - Exceeded Track Limits - Turn 6
09.26.50	63 D. STIRPE	Lap Cancelled (1'52.198) - Exceeded Track Limits - Turn 6
09.26.55		End Of Session

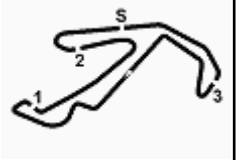
Fastest Laps Sequence

No.	Rider	Nat	Team	Bike	Local Time	Time	Gap	Avg
21	R. KRUMMENACHER	SUI	BARDAHL Evan Bros. WorldSSP Team	Yamaha YZF R6	09:13'29.530	1'39.273		153,250
11	S. CORTESE	GER	Kallio Racing	Yamaha YZF R6	09:13'30.742	1'38.747	-0.526	154,066
11	S. CORTESE	GER	Kallio Racing	Yamaha YZF R6	09:15'09.166	1'38.424	-0.323	154,572
64	F. CARICASULO	ITA	GRT Yamaha Official WorldSSP Team	Yamaha YZF R6	09:15'10.681	1'38.328	-0.096	154,723
144	L. MAHIAS	FRA	GRT Yamaha Official WorldSSP Team	Yamaha YZF R6	09:16'07.599	1'38.265	-0.063	154,822
64	F. CARICASULO	ITA	GRT Yamaha Official WorldSSP Team	Yamaha YZF R6	09:16'48.923	1'38.242	-0.023	154,858
144	L. MAHIAS	FRA	GRT Yamaha Official WorldSSP Team	Yamaha YZF R6	09:19'24.352	1'38.229	-0.013	154,879
11	S. CORTESE	GER	Kallio Racing	Yamaha YZF R6	09:20'06.514	1'38.045	-0.184	155,170

Start 08/07/2018 09:10 End 09:26 The results are provisional until the end of the time limit for protests and appeals and the completion of the technical checks.

These data/results cannot be reproduced, stored and/or transmitted in whole or in part by any manner of electronic, mechanical, photocopying, recording, broadcasting or otherwise now known or herein after developed without the previous express consent by the copyright owner, except for reproduction in daily press and regular printed publications on sale to the public within 60 days of the event related to those data/results and always provided that copyright symbol appears together as follows below.

© DORNA WSBK ORGANIZATION Srl 2018



PIRELLI Riviera di Rimini Round, 6 - 8 July 2018

World Supersport - Best Sectors & Speed Warm Up

Misano Circuit Sic 58 4.226 m

BEST LAP

1	11 S. CORTESE	Yamaha YZF R6	1'38.045
2	64 F. CARICASULO	Yamaha YZF R6	1'38.169
3	144 L. MAHIAS	Yamaha YZF R6	1'38.229
4	16 J. CLUZEL	Yamaha YZF R6	1'38.268
5	3 R. DE ROSA	MV Agusta F3 675	1'38.438
6	43 S. VALTULINI	Kawasaki ZX-6R	1'38.561
7	21 R. KRUMMENACHER	Yamaha YZF R6	1'38.657
8	36 T. GRADINGER	Yamaha YZF R6	1'38.837
9	13 A. WEST	Kawasaki ZX-6R	1'39.122
10	42 M. BUSSOLOTTI	Yamaha YZF R6	1'39.335
11	6 C. PEROLARI	Yamaha YZF R6	1'39.394
12	32 S. MORAIS	Kawasaki ZX-6R	1'39.471
13	81 L. STAPLEFORD	Yamaha YZF R6	1'39.520
14	78 H. OKUBO	Kawasaki ZX-6R	1'39.532
15	86 A. BADOVINI	MV Agusta F3 675	1'39.615
16	111 K. SMITH	Honda CBR600RR	1'39.628
17	84 L. CRESSON	Yamaha YZF R6	1'39.704
18	60 L. GABELLINI	Yamaha YZF R6	1'39.708
19	47 R. HARTOG	Kawasaki ZX-6R	1'39.760
20	56 P. SEBESTYEN	Honda CBR600RR	1'39.839
21	19 A. BALDOLINI	Honda CBR600RR	1'40.115
22	65 M. CANDUCCI	Yamaha YZF R6	1'40.168
23	22 E. LAHTI	Suzuki GSX-R600	1'40.184
24	38 H. SOOMER	Honda CBR600RR	1'40.190
25	10 N. CALERO	Kawasaki ZX-6R	1'40.271
26	15 A. COPPOLA	Yamaha YZF R6	1'40.359
27	93 R. MERCANDELLI	Honda CBR600RR	1'40.562
28	35 S. HILL	Triumph Daytona 675	1'40.574
29	63 D. STIRPE	MV Agusta F3 675	1'40.671
30	77 W. TESSELS	Kawasaki ZX-6R	1'40.704
31	34 J. ITURRIOZ	Kawasaki ZX-6R	1'41.284
32	88 C. STANGE	Kawasaki ZX-6R	1'41.778
33	97 R. BODIS	Kawasaki ZX-6R	1'41.928
34	74 J. VAN SIKKELERUS	Honda CBR600RR	1'42.986

SPEED

1	84 L. CRESSON	Yamaha YZF R6	242.2
2	16 J. CLUZEL	Yamaha YZF R6	241.1
3	43 S. VALTULINI	Kawasaki ZX-6R	239.5
4	64 F. CARICASULO	Yamaha YZF R6	238.4
5	81 L. STAPLEFORD	Yamaha YZF R6	237.4
6	36 T. GRADINGER	Yamaha YZF R6	237.4
7	21 R. KRUMMENACHER	Yamaha YZF R6	236.8
8	78 H. OKUBO	Kawasaki ZX-6R	236.8
9	65 M. CANDUCCI	Yamaha YZF R6	236.8
10	144 L. MAHIAS	Yamaha YZF R6	236.3
11	11 S. CORTESE	Yamaha YZF R6	235.8
12	56 P. SEBESTYEN	Honda CBR600RR	235.3
13	111 K. SMITH	Honda CBR600RR	235.3
14	6 C. PEROLARI	Yamaha YZF R6	234.8
15	42 M. BUSSOLOTTI	Yamaha YZF R6	234.8
16	32 S. MORAIS	Kawasaki ZX-6R	234.8
17	47 R. HARTOG	Kawasaki ZX-6R	234.3
18	3 R. DE ROSA	MV Agusta F3 675	234.3
19	10 N. CALERO	Kawasaki ZX-6R	233.3
20	19 A. BALDOLINI	Honda CBR600RR	232.8
21	93 R. MERCANDELLI	Honda CBR600RR	232.8
22	35 S. HILL	Triumph Daytona 675	232.3
23	22 E. LAHTI	Suzuki GSX-R600	232.3
24	88 C. STANGE	Kawasaki ZX-6R	232.3
25	38 H. SOOMER	Honda CBR600RR	232.3
26	15 A. COPPOLA	Yamaha YZF R6	231.8
27	86 A. BADOVINI	MV Agusta F3 675	231.8
28	13 A. WEST	Kawasaki ZX-6R	231.8
29	63 D. STIRPE	MV Agusta F3 675	231.3
30	77 W. TESSELS	Kawasaki ZX-6R	230.3
31	60 L. GABELLINI	Yamaha YZF R6	229.8
32	34 J. ITURRIOZ	Kawasaki ZX-6R	229.8
33	97 R. BODIS	Kawasaki ZX-6R	226.4
34	74 J. VAN SIKKELERUS	Honda CBR600RR	221.8

SEG. 1

1	11 S. CORTESE	26.688
2	144 L. MAHIAS	26.698
3	3 R. DE ROSA	26.791
4	16 J. CLUZEL	26.798
5	64 F. CARICASULO	26.808
6	43 S. VALTULINI	26.814
7	36 T. GRADINGER	26.837
8	60 L. GABELLINI	26.914
9	81 L. STAPLEFORD	26.929
10	21 R. KRUMMENACHER	26.963
11	13 A. WEST	26.968
12	78 H. OKUBO	27.020
13	6 C. PEROLARI	27.062
14	42 M. BUSSOLOTTI	27.075
15	47 R. HARTOG	27.131
16	65 M. CANDUCCI	27.133
17	32 S. MORAIS	27.134
18	84 L. CRESSON	27.174
19	86 A. BADOVINI	27.178
20	10 N. CALERO	27.178
21	56 P. SEBESTYEN	27.216
22	19 A. BALDOLINI	27.219
23	22 E. LAHTI	27.250
24	77 W. TESSELS	27.287
25	15 A. COPPOLA	27.317
26	93 R. MERCANDELLI	27.320
27	63 D. STIRPE	27.323
28	111 K. SMITH	27.339
29	38 H. SOOMER	27.354
30	35 S. HILL	27.425
31	97 R. BODIS	27.562
32	34 J. ITURRIOZ	27.619
33	88 C. STANGE	27.667
34	74 J. VAN SIKKELERUS	27.815

SEG. 2

1	16 J. CLUZEL	22.456
2	11 S. CORTESE	22.463
3	64 F. CARICASULO	22.511
4	3 R. DE ROSA	22.655
5	144 L. MAHIAS	22.673
6	21 R. KRUMMENACHER	22.708
7	43 S. VALTULINI	22.714
8	36 T. GRADINGER	22.791
9	84 L. CRESSON	22.806
10	111 K. SMITH	22.830
11	13 A. WEST	22.862
12	56 P. SEBESTYEN	22.874
13	6 C. PEROLARI	22.877
14	42 M. BUSSOLOTTI	22.921
15	86 A. BADOVINI	22.940
16	60 L. GABELLINI	22.947
17	32 S. MORAIS	22.966
18	81 L. STAPLEFORD	22.987
19	78 H. OKUBO	23.025
20	65 M. CANDUCCI	23.025
21	93 R. MERCANDELLI	23.066
22	47 R. HARTOG	23.073
23	63 D. STIRPE	23.092
24	22 E. LAHTI	23.103
25	35 S. HILL	23.125
26	19 A. BALDOLINI	23.137
27	15 A. COPPOLA	23.152
28	38 H. SOOMER	23.156
29	10 N. CALERO	23.218
30	77 W. TESSELS	23.222
31	34 J. ITURRIOZ	23.298
32	88 C. STANGE	23.418
33	97 R. BODIS	23.661
34	74 J. VAN SIKKELERUS	23.761

SEG. 3

1	64 F. CARICASULO	26.824
2	144 L. MAHIAS	26.828
3	11 S. CORTESE	26.840
4	16 J. CLUZEL	26.864
5	43 S. VALTULINI	26.880
6	3 R. DE ROSA	26.918
7	21 R. KRUMMENACHER	26.972
8	65 M. CANDUCCI	27.007
9	81 L. STAPLEFORD	27.023
10	111 K. SMITH	27.024
11	36 T. GRADINGER	27.075
12	78 H. OKUBO	27.108
13	42 M. BUSSOLOTTI	27.139
14	32 S. MORAIS	27.146
15	13 A. WEST	27.197
16	56 P. SEBESTYEN	27.214
17	47 R. HARTOG	27.215
18	6 C. PEROLARI	27.247
19	38 H. SOOMER	27.277
20	93 R. MERCANDELLI	27.291
21	84 L. CRESSON	27.292
22	86 A. BADOVINI	27.301
23	35 S. HILL	27.302
24	22 E. LAHTI	27.333
25	60 L. GABELLINI	27.348
26	15 A. COPPOLA	27.421
27	19 A. BALDOLINI	27.429
28	10 N. CALERO	27.451
29	63 D. STIRPE	27.573
30	34 J. ITURRIOZ	27.632
31	88 C. STANGE	27.638
32	77 W. TESSELS	27.772
33	97 R. BODIS	27.797
34	74 J. VAN SIKKELERUS	28.506

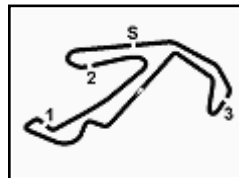
SEG. 4

1	64 F. CARICASULO	21.840
2	144 L. MAHIAS	21.860
3	11 S. CORTESE	21.899
4	3 R. DE ROSA	21.944
5	16 J. CLUZEL	21.944
6	21 R. KRUMMENACHER	21.951
7	13 A. WEST	21.969
8	36 T. GRADINGER	21.983
9	60 L. GABELLINI	21.995
10	43 S. VALTULINI	22.003
11	86 A. BADOVINI	22.046
12	42 M. BUSSOLOTTI	22.089
13	47 R. HARTOG	22.114
14	84 L. CRESSON	22.143
15	6 C. PEROLARI	22.165
16	32 S. MORAIS	22.177
17	81 L. STAPLEFORD	22.205
18	111 K. SMITH	22.214
19	78 H. OKUBO	22.221
20	19 A. BALDOLINI	22.253
21	22 E. LAHTI	22.273
22	56 P. SEBESTYEN	22.274
23	65 M. CANDUCCI	22.298
24	77 W. TESSELS	22.330
25	63 D. STIRPE	22.336
26	15 A. COPPOLA	22.338
27	38 H. SOOMER	22.338
28	35 S. HILL	22.369
29	10 N. CALERO	22.421
30	93 R. MERCANDELLI	22.511
31	34 J. ITURRIOZ	22.528
32	97 R. BODIS	22.610
33	88 C. STANGE	22.704
34	74 J. VAN SIKKELERUS	22.763

08/07/2018

These data/results cannot be reproduced, stored and/or transmitted in whole or in part by any manner of electronic, mechanical, photocopying, recording, broadcasting or otherwise now known or herein after developed without the previous express consent by the copyright owner, except for reproduction in daily press and regular printed publications on sale to the public within 60 days of the event related to those data/results and always provided that copyright symbol appears together as follows below.

© DORNA WSBK ORGANIZATION Srl 2018



PIRELLI Riviera di Rimini Round, 6 - 8 July 2018

World Supersport - Ideal Times Warm Up

Misano Circuit Sic 58 4.226 m

1 / 2

No.	Rider	Nat	Bike	Seg. 1 Diff. 1	Seg. 2 Diff. 2	Seg. 3 Diff. 3	Seg. 4 Diff. 4	Ideal Time Best Lap	Pos.	Diff.
1	11 S. CORTESE	GER	Yamaha YZF R6	26.688	22.463 0.136	26.840	21.899 0.019	1'37.890 1'38.045	1	0.155
2	64 F. CARICASULO	ITA	Yamaha YZF R6	26.808 0.118	22.511	26.824	21.840 0.068	1'37.983 1'38.169	2	0.186
3	144 L. MAHIAS	FRA	Yamaha YZF R6	26.698 0.019	22.673 0.040	26.828 0.111	21.860	1'38.059 1'38.229	3	0.170
4	16 J. CLUZEL	FRA	Yamaha YZF R6	26.798	22.456 0.109	26.864 0.038	21.944 0.059	1'38.062 1'38.268	4	0.206
5	3 R. DE ROSA	ITA	MV Agusta F3 675	26.791	22.655	26.918 0.130	21.944	1'38.308 1'38.438	5	0.130
6	43 S. VALTULINI	ITA	Kawasaki ZX-6R	26.814	22.714 0.070	26.880 0.080	22.003	1'38.411 1'38.561	6	0.150
7	21 R. KRUMMENACHER	SUI	Yamaha YZF R6	26.963	22.708	26.972	21.951 0.063	1'38.594 1'38.657	7	0.063
8	36 T. GRADINGER	AUT	Yamaha YZF R6	26.837	22.791 0.091	27.075	21.983 0.060	1'38.686 1'38.837	8	0.151
9	13 A. WEST	AUS	Kawasaki ZX-6R	26.968 0.126	22.862	27.197	21.969	1'38.996 1'39.122	9	0.126
10	81 L. STAPLEFORD	GBR	Yamaha YZF R6	26.929 0.066	22.987 0.068	27.023 0.065	22.205 0.177	1'39.144 1'39.520	13	0.376
11	60 L. GABELLINI	ITA	Yamaha YZF R6	26.914 0.191	22.947	27.348	21.995 0.313	1'39.204 1'39.708	18	0.504
12	42 M. BUSSOLOTTI	ITA	Yamaha YZF R6	27.075 0.042	22.921	27.139 0.069	22.089	1'39.224 1'39.335	10	0.111
13	6 C. PEROLARI	FRA	Yamaha YZF R6	27.062	22.877 0.043	27.247	22.165	1'39.351 1'39.394	11	0.043
14	78 H. OKUBO	JPN	Kawasaki ZX-6R	27.020 0.080	23.025	27.108 0.078	22.221	1'39.374 1'39.532	14	0.158
15	111 K. SMITH	GBR	Honda CBR600RR	27.339 0.021	22.830	27.024 0.200	22.214	1'39.407 1'39.628	16	0.221
16	84 L. CRESSON	BEL	Yamaha YZF R6	27.174	22.806	27.292 0.246	22.143 0.043	1'39.415 1'39.704	17	0.289
17	32 S. MORAIS	POR	Kawasaki ZX-6R	27.134 0.048	22.966	27.146	22.177	1'39.423 1'39.471	12	0.048
18	65 M. CANDUCCI	ITA	Yamaha YZF R6	27.133 0.312	23.025	27.007 0.201	22.298 0.192	1'39.463 1'40.168	22	0.705
19	86 A. BADOVINI	ITA	MV Agusta F3 675	27.178	22.940 0.012	27.301 0.064	22.046 0.074	1'39.465 1'39.615	15	0.150
20	47 R. HARTOG	NED	Kawasaki ZX-6R	27.131 0.043	23.073 0.093	27.215 0.091	22.114	1'39.533 1'39.760	19	0.227
21	56 P. SEBESTYEN	HUN	Honda CBR600RR	27.216 0.110	22.874 0.151	27.214	22.274	1'39.578 1'39.839	20	0.261
22	22 E. LAHTI	FIN	Suzuki GSX-R600	27.250	23.103 0.022	27.333 0.108	22.273 0.095	1'39.959 1'40.184	23	0.225
23	19 A. BALDOLINI	ITA	Honda CBR600RR	27.219	23.137	27.429 0.009	22.253 0.068	1'40.038 1'40.115	21	0.077
24	38 H. SOOMER	EST	Honda CBR600RR	27.354	23.156 0.001	27.277 0.009	22.338 0.055	1'40.125 1'40.190	24	0.065
25	93 R. MERCANDELLI	ITA	Honda CBR600RR	27.320 0.110	23.066 0.137	27.291	22.511 0.127	1'40.188 1'40.562	27	0.374
26	35 S. HILL	GBR	Triumph Daytona 675	27.425 0.070	23.125 0.142	27.302 0.001	22.369 0.140	1'40.221 1'40.574	28	0.353
27	15 A. COPPOLA	ITA	Yamaha YZF R6	27.317 0.110	23.152	27.421 0.021	22.338	1'40.228 1'40.359	26	0.131
28	10 N. CALERO	ESP	Kawasaki ZX-6R	27.178	23.218	27.451	22.421 0.003	1'40.268 1'40.271	25	0.003
29	63 D. STIRPE	ITA	MV Agusta F3 675	27.323 0.094	23.092 0.124	27.573	22.336 0.129	1'40.324 1'40.671	29	0.347
30	77 W. TESSELS	NED	Kawasaki ZX-6R	27.287	23.222	27.772 0.008	22.330 0.085	1'40.611 1'40.704	30	0.093
31	34 J. ITURRIOZ	ARG	Kawasaki ZX-6R	27.619 0.129	23.298	27.632	22.528 0.078	1'41.077 1'41.284	31	0.207
32	88 C. STANGE	GER	Kawasaki ZX-6R	27.667 0.259	23.418 0.092	27.638	22.704	1'41.427 1'41.778	32	0.351
33	97 R. BODIS	HUN	Kawasaki ZX-6R	27.562	23.661 0.125	27.797	22.610 0.173	1'41.630 1'41.928	33	0.298

08/07/2018

These data/results cannot be reproduced, stored and/or transmitted in whole or in part by any manner of electronic, mechanical, photocopying, recording, broadcasting or otherwise now known or herein after developed without the previous express consent by the copyright owner, except for reproduction in daily press and regular printed publications on sale to the public within 60 days of the event related to those data/results and always provided that copyright symbol appears together as follows below.

© DORNA WSBK ORGANIZATION Srl 2018

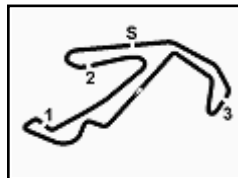
FICR PERUGIA TIMING



Official Tyre Supplier



Official Timekeeper



PIRELLI Riviera di Rimini Round, 6 - 8 July 2018

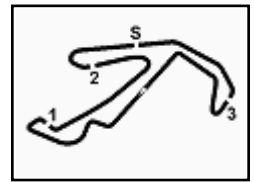
World Supersport - Ideal Times Warm Up

Misano Circuit Sic 58 4.226 m
2 / 2

No.	Rider	Nat	Bike	Seg. 1	Seg. 2	Seg. 3	Seg. 4	Ideal Time		
				Diff. 1	Diff. 2	Diff. 3	Diff. 4	Best Lap	Pos.	Diff.
34	74 J. VAN SIKKELERUS	NED	Honda CBR600RR	27.815 0.141	23.761	28.506	22.763	1'42.845	34	0.141
Overall Ideal Time				26.688	22.456	26.824	21.840	1'37.808		

08/07/2018
 These data/results cannot be reproduced, stored and/or transmitted in whole or in part by any manner of electronic, mechanical, photocopying, recording, broadcasting or otherwise now known or herein after developed without the previous express consent by the copyright owner, except for reproduction in daily press and regular printed publications on sale to the public within 60 days of the event related to those data/results and always provided that copyright symbol appears together as follows below.
 © DORNA WSBK ORGANIZATION Srl 2018





PIRELLI Riviera di Rimini Round, 6 - 8 July 2018

World Supersport - Chronological Analysis Warm Up

7	27.924	23.655	27.681	22.898	1'42.158	227,4	9:22'14.811
8	27.667	23.571	29.593	23.037	1'43.868	214,7	9:23'58.679
9	31.902	24.153	27.852	22.784	1'46.691	231,3	9:25'45.370

33° 97 R. BODIS (1'41.928)							
Lap	Seg.1	Seg.2	Seg.3	Seg.4	Lap Time	km/h	Local Time
1		24.684	28.845	23.228		224,5	9:11'58.621
2	28.283	23.869	28.696	22.870	1'43.718C	223,1	9:13'42.339
3	27.852	23.670	28.352	22.713	1'42.587C	224,1	9:15'24.926
4	27.596	23.661	28.335	22.958	1'42.550C	225,0	9:17'07.476
5	27.754	23.994	28.373	22.718	1'42.839	224,5	9:18'50.315
6	36.846	24.486	28.117	22.659	1'52.108	224,1	9:20'42.423
7	27.562	23.786	27.797	22.783	1'41.928	226,4	9:22'24.351
8	27.846	24.246	27.953	22.610	1'42.655	225,0	9:24'07.006
9	27.656	23.798	27.891	22.664	1'42.009	225,5	9:25'49.015

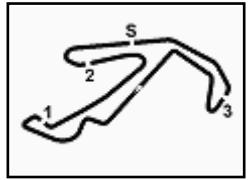
34° 74 J. VAN SIKKELERUS (1'42.986)							
Lap	Seg.1	Seg.2	Seg.3	Seg.4	Lap Time	km/h	Local Time
1		25.260	29.308	23.261		218,2	9:11'59.937
2	28.115	24.036	28.669	22.913	1'43.733	219,5	9:13'43.670
3	27.956	23.761	28.506	22.763	1'42.986	221,8	9:15'26.656
4	28.430	31.430	30.862	24.559	1'55.281	215,1	9:17'21.937
5	27.815	23.965	28.958	33.681	1'54.419P	216,0	9:19'16.356
6	1'39.755	24.427	28.799	28.428	3'01.409P	218,2	9:22'17.765
7	27.912	23.943	28.507	23.069	1'43.431	219,1	9:24'01.196
8	28.630	24.029	39.137	23.738	1'55.534	186,2	9:25'56.730

08/07/2018 P = Pits In/Out - C = Lap Time Cancelled

These data/results cannot be reproduced, stored and/or transmitted in whole or in part by any manner of electronic, mechanical, photocopying, recording, broadcasting or otherwise now known or herein after developed without the previous express consent by the copyright owner, except for reproduction in daily press and regular printed publications on sale to the public within 60 days of the event related to those data/results and always provided that copyright symbol appears together as follows below.

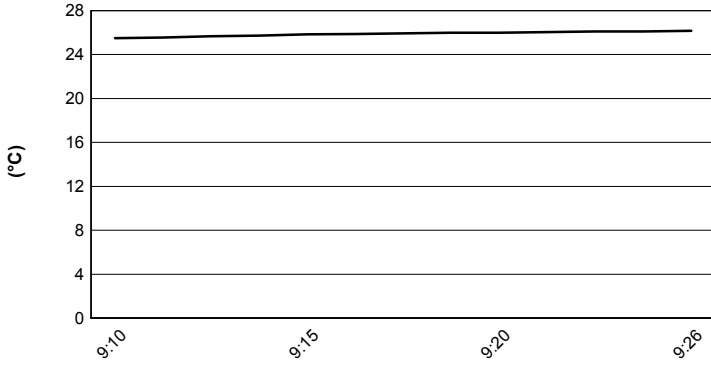
© DORNA WSBK ORGANIZATION Srl 2018



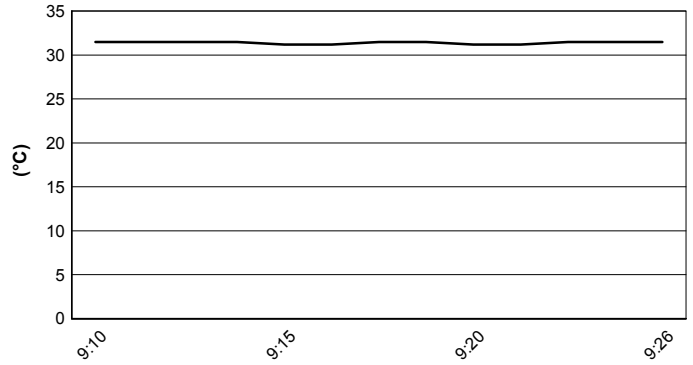


PIRELLI Riviera di Rimini Round, 6 - 8 July 2018
World Supersport - Weather Report Warm Up
 Session started 09:10 - Session ended 9:26

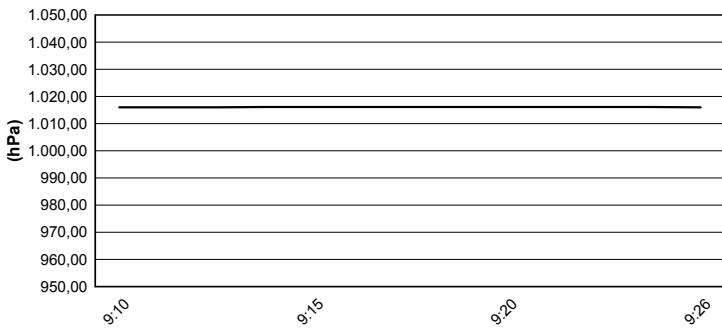
Air Temperature



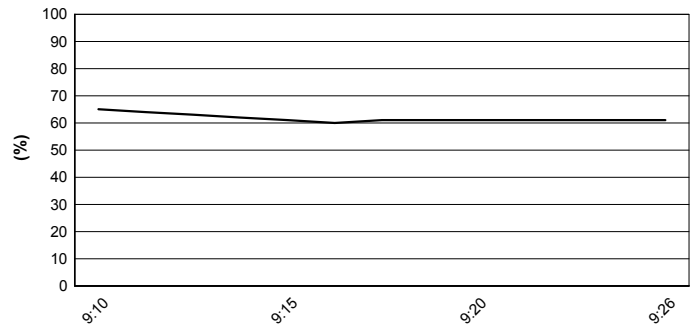
Track Temperature



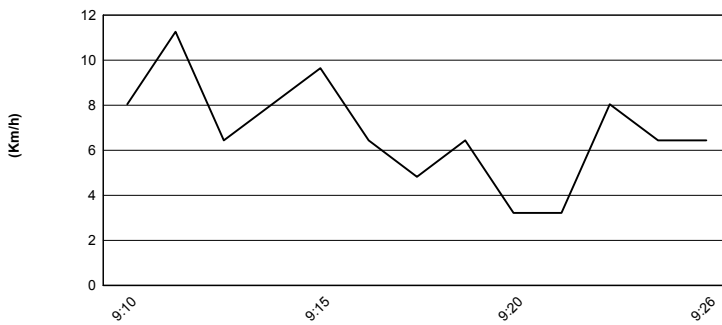
Air Pressure



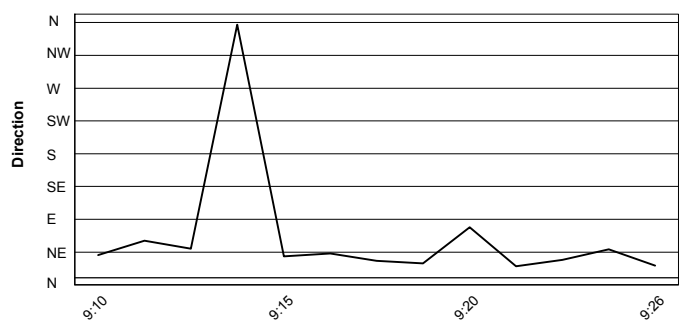
Humidity



Wind Speed



Wind Direction

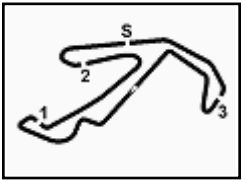


08/07/2018

These data/results cannot be reproduced, stored and/or transmitted in whole or in part by any manner of electronic, mechanical, photocopying, recording, broadcasting or otherwise now known or herein after developed without the previous express consent by the copyright owner, except for reproduction in daily press and regular printed publications on sale to the public within 60 days of the event related to those data/results and always provided that copyright symbol appears together as follows below.

© DORNA WSBK ORGANIZATION Srl 2018





Misano Circuit Sic 58 4.226 m

PIRELLI Riviera di Rimini Round, 6 - 8 July 2018

World Supersport - Starting Grid

19 Laps x 4,226 km = 80,294 km

1	64 CARICASULO F. Yamaha 1'37.694 SP2	2	16 CLUZEL J. Yamaha 1'38.185 SP2	3	21 KRUMMENACHER R. Yamaha 1'38.498 SP2
2	3 DE ROSA R. MV Agusta 1'38.504 SP2	5	11 CORTESE S. Yamaha 1'38.574 SP2	6	144 MAHIAS L. Yamaha 1'38.754 SP2
3	43 VALTULINI S. Kawasaki 1'38.766 SP2	8	111 SMITH K. Honda 1'38.829 SP2	9	78 OKUBO H. Kawasaki 1'39.098 SP2
4	13 WEST A. Kawasaki 1'39.164 SP2	11	32 MORAIS S. Kawasaki 1'39.173 SP2	12	36 GRADINGER T. Yamaha 1'39.524 SP1
5	60 GABELLINI L. Yamaha 1'39.781 SP1	14	38 SOOMER H. Honda 1'39.828 SP1	15*	42 BUSSOLOTTI M. Yamaha 1'39.485 SP2
6	93 MERCANDELLI R. Honda 1'39.885 SP1	17	56 SEBESTYEN P. Honda 1'40.017 SP1	18	22 LAHTI E. Suzuki 1'40.028 SP1
7	63 STIRPE D. MV Agusta 1'39.883 SP1	20	6 PEROLARI C. Yamaha 1'40.114 SP1	21	86 BADOVINI A. MV Agusta 1'40.150 SP1
8	47 HARTOG R. Kawasaki 1'40.264 SP1	23	81 STAPLEFORD L. Yamaha 1'40.483 SP1	24	84 CRESSON L. Yamaha 1'40.524 SP1
9	15 COPPOLA A. Yamaha 1'40.262 SP1	26	65 CANDUCCI M. Yamaha 1'40.565 SP1	27	19 BALDOLINI A. Honda 1'40.608 SP1
10	10 CALERO N. Kawasaki 1'40.828 SP1	29	77 TESSELS W. Kawasaki 1'40.839 SP1	30	35 HILL S. Triumph 1'41.672 SP1
11	97 BODIS R. Kawasaki 1'41.914 SP1	32	74 VAN SIKKELERUS J. Honda 1'42.447 SP1	33	88 STANGE C. Kawasaki SP1
12	34 ITURRIOZ J. Kawasaki 1'42.171 SP1				

N.42 (Bussolotti M.), N.63 (Stirpe D.), N.15 (Coppola A.) and N.34 (Itturioz J.) have been demoted by 3 grid positions according to Art. 1.21.2

08/07/2018 Jury President

* = Penalized

These data/results cannot be reproduced, stored and/or transmitted in whole or in part by any manner of electronic, mechanical, photocopying, recording, broadcasting or otherwise now known or herein after developed without the previous express consent by the copyright owner, except for reproduction in daily press and regular printed publications on sale to the public within 60 days of the event related to those data/results and always provided that copyright symbol appears together as follows below.

© DORNA WSBK ORGANIZATION Srl 2018

FIKR PERUGIA TIMING



Official Tyre Supplier



Official Timekeeper