

## PIRELLI Riviera di Rimini Round, 6 - 8 July 2018

### World Supersport 300 - Free Practices & Superpole Combined Results

Misano Circuit Sic 58 4.226 m

No.	Rider	Nat	Team	Bike	FPs	LL	Superpole	Gap	Time	Avg
1	<b>55 G. HENDRA PRATAMA</b>	INA	BIBLION YAMAHA MOTOXRACING	Yamaha YZF-R3	1'51.217	17	<b>1'50.517</b>		<b>1'50.517</b>	137,658
2	<b>95 S. DEROUE</b>	NED	Motoport Kawasaki	Kawasaki Ninja 400	1'51.623	17	<b>1'50.861</b>	0.344	<b>1'50.861</b>	137,231
3	<b>8 M. PEREZ</b>	ESP	Kawasaki ParkinGO Team	Kawasaki Ninja 400	1'52.523	14	<b>1'50.905</b>	0.388	<b>1'50.905</b>	137,177
4	<b>20 D. LOUREIRO</b>	RSA	DS Junior Team	Kawasaki Ninja 400	1'52.010	26	<b>1'51.125</b>	0.608	<b>1'51.125</b>	136,905
5	<b>81 M. GONZALEZ</b>	ESP	Pertamina Almeria BCD Junior Team by MS	Yamaha YZF-R3	1'51.850	14	<b>1'51.212</b>	0.695	<b>1'51.212</b>	136,798
6	<b>48 T. BRIANTI</b>	ITA	Team Runner Bike	KTM RC 390 R	1'51.871	14	<b>1'51.349</b>	0.832	<b>1'51.349</b>	136,630
7	<b>19 L. BERNARDI</b>	ITA	Team Trasimeno	Yamaha YZF-R3	1'51.976	15	<b>1'51.576</b>	1.059	<b>1'51.576</b>	136,352
8	<b>33 D. VALLE</b>	ESP	BCD Yamaha MS Racing	Yamaha YZF-R3	1'51.885	15	<b>1'51.691</b>	1.174	<b>1'51.691</b>	136,212
9	<b>22 N. KALININ</b>	UKR	GP Project Team	Kawasaki Ninja 400	1'52.416	22	<b>1'51.936</b>	1.419	<b>1'51.936</b>	135,913
10	<b>85 K. SABATUCCI</b>	ITA	PROGP Racing	Yamaha YZF-R3	1'51.913	15	<b>1'52.234</b>	1.717	<b>1'52.234</b>	135,553
11	<b>17 K. MEUFFELS</b>	NED	KTM Fortron Junior Team	KTM RC 390 R	1'51.716	18	<b>1'52.295</b>	1.778	<b>1'52.295</b>	135,479
12	<b>39 O. BONOLI</b>	ITA	Team Trasimeno	Yamaha YZF-R3	1'51.932	15	<b>1'52.861</b>	2.344	<b>1'52.861</b>	134,799
13	<b>51 M. BASTIANELLI</b>	ITA	PRODINA IRCOS Team	Kawasaki Ninja 400	1'52.438	12	<b>1'51.548</b>		<b>1'51.548</b>	136,386
14	<b>69 M. HERRERA</b>	ESP	BCD Yamaha MS Racing	Yamaha YZF-R3	1'52.378	15	<b>1'51.674</b>	0.126	<b>1'51.674</b>	136,232
15	<b>14 E. DE LA VEGA</b>	FRA	GP Project Team	Kawasaki Ninja 400	1'52.526	22	<b>1'51.890</b>	0.342	<b>1'51.890</b>	135,969
16	<b>27 F. ROVELLI</b>	ITA	Kawasaki ParkinGO Team	Kawasaki Ninja 400	1'52.757	15	<b>1'51.916</b>	0.368	<b>1'51.916</b>	135,938
17	<b>2 A. CARRASCO</b>	ESP	DS Junior Team	Kawasaki Ninja 400	1'52.819	20	<b>1'51.953</b>	0.405	<b>1'51.953</b>	135,893
18	<b>43 L. GRUNWALD</b>	GER	Freudenberg KTM WorldSSP Team	KTM RC 390 R	1'52.393	15	<b>1'52.215</b>	0.667	<b>1'52.215</b>	135,575
19	<b>15 G. VAN STRAALLEN</b>	NED	KTM Fortron Racing Team	KTM RC 390 R	1'53.273	17	<b>1'52.437</b>	0.889	<b>1'52.437</b>	135,308
20	<b>21 B. SANCHEZ</b>	ESP	ETG Racing	Kawasaki Ninja 400	1'52.638	17	<b>1'52.450</b>	0.902	<b>1'52.450</b>	135,292
21	<b>41 J. JÄHNIG</b>	GER	Freudenberg KTM Junior Team	KTM RC 390 R	1'52.166	15	<b>1'52.564</b>	1.016	<b>1'52.564</b>	135,155
22	<b>65 J. FACCO</b>	ITA	BIBLION YAMAHA MOTOXRACING	Yamaha YZF-R3	1'52.813	21	<b>1'52.589</b>	1.041	<b>1'52.589</b>	135,125
23	<b>54 F. FULIGNI</b>	ITA	GRT Yamaha WorldSSP300 Team	Yamaha YZF-R3	1'52.662	30	<b>1'52.601</b>	1.053	<b>1'52.601</b>	135,111
24	<b>96 I. PRATNA</b>	INA	TERRA E MOTO	Yamaha YZF-R3	1'52.359	15	<b>1'52.608</b>	1.060	<b>1'52.608</b>	135,102
25	<b>12 A. RUSMIPUTRO</b>	INA	Pertamina Almeria BCD by MS Racing	Yamaha YZF-R3	1'53.083	17	<b>1'52.717</b>	1.169	<b>1'52.717</b>	134,972
26	<b>71 T. EDWARDS</b>	AUS	Nutec - Benjan - Kawasaki	Kawasaki Ninja 400	1'55.358	16	<b>1'52.880</b>	1.332	<b>1'52.880</b>	134,777
27	<b>93 W. KHAN</b>	NED	Nutec - Benjan - Kawasaki	Kawasaki Ninja 400	1'54.038	16	<b>1'52.978</b>	1.430	<b>1'52.978</b>	134,660
28	<b>64 H. DE CANCELLIS</b>	FRA	Team Toth - Yart	Yamaha YZF-R3	1'53.238	27	<b>1'53.248</b>	1.700	<b>1'53.248</b>	134,339
29	<b>79 T. ALONSO</b>	POR	Samurai Racing	Yamaha YZF-R3	1'54.263	20	<b>1'53.507</b>	1.959	<b>1'53.507</b>	134,032
30	<b>97 M. KAPPLER</b>	GER	Freudenberg KTM WorldSSP Team	KTM RC 390 R	1'54.100	16	<b>1'53.740</b>	2.192	<b>1'53.740</b>	133,758
31	<b>3 T. TOPARIS</b>	AUS	Motoport Kawasaki	Kawasaki Ninja 400	1'53.709	19	<b>1'53.848</b>	2.300	<b>1'53.848</b>	133,631
32	<b>28 D. KOOPMAN</b>	NED	GRT Yamaha WorldSSP300 Team	Yamaha YZF-R3	1'54.729	29	<b>1'53.991</b>	2.443	<b>1'53.991</b>	133,463
33	<b>30 D. BLIN</b>	POL	Team Toth - Yart	Yamaha YZF-R3	1'53.530	24	<b>1'54.000</b>	2.452	<b>1'54.000</b>	133,453
34	<b>13 D. IOZZO</b>	RSA	Racedays	Honda CBR500R	1'54.864	17	<b>1'54.275</b>	2.727	<b>1'54.275</b>	133,131
35	<b>7 N. SETTIMO</b>	ITA	Scuderia Maranga Racing	Honda CBR500R	1'55.050	30	<b>1'55.128</b>	3.580	<b>1'55.128</b>	132,145
36	<b>78 J. FORAY</b>	FRA	ETG Racing	Kawasaki Ninja 400	1'56.250	13	<b>1'55.222</b>	3.674	<b>1'55.222</b>	132,037
37	<b>44 S. LOCHOFF</b>	RSA	Samurai Racing	Kawasaki Ninja 400	1'54.973	28	<b>1'55.325</b>	3.777	<b>1'55.325</b>	131,919
38	<b>5 R. VOS</b>	NED	KTM Fortron Racing Team	KTM RC 390 R	1'56.854	18	<b>1'56.064</b>	4.516	<b>1'56.064</b>	131,079
39	<b>62 J. SCHULTZ</b>	RSA	Team Trasimeno	Yamaha YZF-R3	1'57.814	14	<b>1'57.934</b>	6.386	<b>1'57.934</b>	129,001
40	<b>58 T. FINOCCHIARO</b>	GBR	Scuderia Maranga Racing	Honda CBR500R	1'55.977	27	<b>1'57.982</b>	6.434	<b>1'57.982</b>	128,948

07/07/2018

The results are provisional until the end of the time limit for protests and appeals and the completion of the technical checks.

These data/results cannot be reproduced, stored and/or transmitted in whole or in part by any manner of electronic, mechanical, photocopying, recording, broadcasting or otherwise now known or herein after developed without the previous express consent by the copyright owner, except for reproduction in daily press and regular printed publications on sale to the public within 60 days of the event related to those data/results and always provided that copyright symbol appears together as follows below.

© DORNA WSBK ORGANIZATION Srl 2018



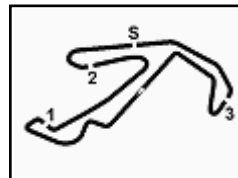
Official Fuel Supplier



Official Tyre Supplier



Official Timekeeper



## PIRELLI Riviera di Rimini Round, 6 - 8 July 2018

### World Supersport 300 - Provisional Starting Grid

Misano Circuit Sic 58 4.226 m

13 Laps x 4,226 km = 54,938 km

1	55 HENDRA PRATAMA G. Yamaha 1'50.517 SP2	2	95 DEROUÉ S. Kawasaki 1'50.861 SP2	3	20 LOUREIRO D. Kawasaki 1'51.125 SP2
2	81 GONZALEZ M. Yamaha 1'51.212 SP2	5	48 BRIANTI T. KTM 1'51.349 SP2	6	19 BERNARDI L. Yamaha 1'51.576 SP2
3	33 VALLE D. Yamaha 1'51.691 SP2	8	22 KALININ N. Kawasaki 1'51.936 SP2	9*	8 PEREZ M. Kawasaki 1'50.905 SP2
4	85 SABATUCCI K. Yamaha 1'52.234 SP2	11	17 MEUFFELS K. KTM 1'52.295 SP2	12	39 BONOLI O. Yamaha 1'52.861 SP2
5	51 BASTIANELLI M. Kawasaki 1'51.548 SP1	14	69 HERRERA M. Yamaha 1'51.674 SP1	15	14 DE LA VEGA E. Kawasaki 1'51.890 SP1
6	2 CARRASCO A. Kawasaki 1'51.953 SP1	17	43 GRUNWALD L. KTM 1'52.215 SP1	18	15 VAN STRAALLEN G. KTM 1'52.437 SP1
7	21 SANCHEZ B. Kawasaki 1'52.450 SP1	20	41 JÄHNIG J. KTM 1'52.564 SP1	21	65 FACCO J. Yamaha 1'52.589 SP1
8	54 FULIGNI F. Yamaha 1'52.601 SP1	23	12 RUSMIPUTRO A. Yamaha 1'52.717 SP1	24	28 KOOPMAN D. Yamaha 1'53.991 SP1
9	5 VOS R. KTM 1'56.064 SP1	26*	27 ROVELLI F. Kawasaki 1'51.916 SP1	27*	96 PRATNA I. Yamaha 1'52.608 SP1
10	71 EDWARDS T. Kawasaki 1'52.880 SP1	29*	93 KHAN W. Kawasaki 1'52.978 SP1	30*	64 DE CANCELLIS H. Yamaha 1'53.248 SP1
11	79 ALONSO T. Yamaha 1'53.507 SP1	32*	97 KAPPLER M. KTM 1'53.740 SP1	33*	3 TOPARIS T. Kawasaki 1'53.848 SP1
12	30 BLIN D. Yamaha 1'54.000 SP1	35*	13 IOZZO D. Honda 1'54.275 SP1	36*	7 SETTIMO N. Honda 1'55.128 SP1
13	78 FORAY J. Kawasaki 1'55.222 SP1	38*	44 LOCHOFF S. Kawasaki 1'55.325 SP1	39*	62 SCHULTZ J. Yamaha 1'57.934 SP1
14	58 FINOCCHIARO T. Honda 1'57.982 SP1				

N. 27, 96, 71, 93, 64, 79, 97, 3, 30, 13, 7, 78, 44, 62, 58 have been penalized to start from the back of the grid for not respecting the red flag signal at pit exit

N.8 (Perez M.) has been demoted by 6 grid positions according to Art. 2.7.4 (Minimum Weight)

07/07/2018 Jury President .....

\* = Penalized

These data/results cannot be reproduced, stored and/or transmitted in whole or in part by any manner of electronic, mechanical, photocopying, recording, broadcasting or otherwise now known or herein after developed without the previous express consent by the copyright owner, except for reproduction in daily press and regular printed publications on sale to the public within 60 days of the event related to those data/results and always provided that copyright symbol appears together as follows below.

© DORNA WSBK ORGANIZATION Srl 2018



Official Fuel Supplier

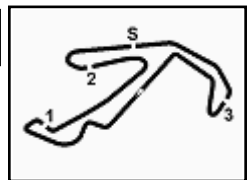


FKR PERUGIA TIMING

Official Tyre Supplier



Official Timekeeper



## PIRELLI Riviera di Rimini Round, 6 - 8 July 2018

### World Supersport 300 - Results Superpole 2

Misano Circuit Sic 58 4.226 m  
1 / 2

No.	Rider	Nat	Team	Bike	Time	Gap	Rel.	Laps	Speed	
									Avg	Max
1	<b>55 G. HENDRA PRATAMA</b>	INA	BIBLION YAMAHA MOTOXRACING	Yamaha YZF-R3	<b>1'50.517</b>			5	137,658	<b>175,9</b>
2	<b>95 S. DEROUE</b>	NED	Motoport Kawasaki	Kawasaki Ninja 400	<b>1'50.861</b>	0.344	0.344	7	137,231	<b>180,3</b>
3	<b>8 M. PEREZ</b>	ESP	Kawasaki ParkinGO Team	Kawasaki Ninja 400	<b>1'50.905</b>	0.388	0.044	7	137,177	<b>178,2</b>
4	<b>20 D. LOUREIRO</b>	RSA	DS Junior Team	Kawasaki Ninja 400	<b>1'51.125</b>	0.608	0.220	7	136,905	<b>181,8</b>
5	<b>81 M. GONZALEZ</b>	ESP	Pertamina Almeria BCD Junior Team by MS	Yamaha YZF-R3	<b>1'51.212</b>	0.695	0.087	7	136,798	<b>177,9</b>
6	<b>48 T. BRIANTI</b>	ITA	Team Runner Bike	KTM RC 390 R	<b>1'51.349</b>	0.832	0.137	8	136,630	<b>173,9</b>
7	<b>19 L. BERNARDI</b>	ITA	Team Trasimeno	Yamaha YZF-R3	<b>1'51.576</b>	1.059	0.227	7	136,352	<b>176,5</b>
8	<b>33 D. VALLE</b>	ESP	BCD Yamaha MS Racing	Yamaha YZF-R3	<b>1'51.691</b>	1.174	0.115	7	136,212	<b>177,0</b>
9	<b>22 N. KALININ</b>	UKR	GP Project Team	Kawasaki Ninja 400	<b>1'51.936</b>	1.419	0.245	7	135,913	<b>177,3</b>
10	<b>85 K. SABATUCCI</b>	ITA	PROGP Racing	Yamaha YZF-R3	<b>1'52.234</b>	1.717	0.298	7	135,553	<b>175,0</b>
11	<b>17 K. MEUFFELS</b>	NED	KTM Fortron Junior Team	KTM RC 390 R	<b>1'52.295</b>	1.778	0.061	7	135,479	<b>179,1</b>
12	<b>39 O. BONOLI</b>	ITA	Team Trasimeno	Yamaha YZF-R3	<b>1'52.861</b>	2.344	0.566	7	134,799	<b>172,0</b>

AIR	Humidity:	54%	Temp:	28°C
TRACK	Condition:	Dry	Temp:	43°C

Records	Pole (SP2)	2017	M.Perez	1'52.490	135,240	Km/h
	Race (RC)	2017	A.Pontone	1'53.397	134,160	Km/h
	Circuit (SP1)	2018	N.Kalinin	1'51.092	136,950	Km/h

Start 07/07/2018 11:55 End 12:11 The results are provisional until the end of the time limit for protests and appeals and the completion of the technical checks.

These data/results cannot be reproduced, stored and/or transmitted in whole or in part by any manner of electronic, mechanical, photocopying, recording, broadcasting or otherwise now known or herein after developed without the previous express consent by the copyright owner, except for reproduction in daily press and regular printed publications on sale to the public within 60 days of the event related to those data/results and always provided that copyright symbol appears together as follows below.

© DORNA WSBK ORGANIZATION Srl 2018



Official Fuel Supplier

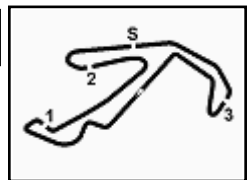


PIRELLI PERUGIA TIMING

Official Tyre Supplier



Official Timekeeper


**PIRELLI Riviera di Rimini Round, 6 - 8 July 2018**
**World Supersport 300 - Results Superpole 2**

 Misano Circuit Sic 58 4.226 m  
 2 / 2

**Session Highlights**

Local Time	No. Rider	Description
11.51.06	97 M. KAPPLER	Medical Centre
11.55.00		Start
12.00.55	17 K. MEUFFELS	Current Lap Cancelled - Exceeded Track Limits - Turn 15
12.02.14	81 M. GONZALEZ	Lap Cancelled (1'52.353) - Exceeded Track Limits - Turn 16
12.02.26	55 G. HENDRA PRATAMA	Lap Cancelled (1'51.282) - Exceeded Track Limits - Turn 16
12.03.14	19 L. BERNARDI	Lap Cancelled (1'54.781) - Exceeded Track Limits - Turn 16
12.03.35	19 L. BERNARDI	Lap Cancelled (1'54.804) - Exceeded Track Limits - Turn 16
12.05.37	95 S. DEROUE	Lap Cancelled (1'51.721) - Exceeded Track Limits - Turn 16
12.07.55	20 D. LOUREIRO	Lap Cancelled (1'55.160) - Exceeded Track Limits - Turn 16
12.07.59	33 D. VALLE	Lap Cancelled (1'53.400) - Exceeded Track Limits - Turn 16
12.08.03	95 S. DEROUE	Lap Cancelled (2'01.800) - Exceeded Track Limits - Turn 16
12.10.47	22 N. KALININ	Lap Cancelled (1'51.231) - Exceeded Track Limits - Turn 15
12.11.07		End Of Session

**Fastest Laps Sequence**

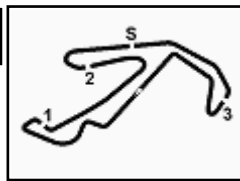
No. Rider	Nat	Team	Bike	Local Time	Time	Gap	Avg
85 K. SABATUCCI	ITA	PROGP Racing	Yamaha YZF-R3	11:59'03.388	<b>1'53.647</b>		133,867
39 O. BONOLI	ITA	Team Trasimeno	Yamaha YZF-R3	11:59'03.451	<b>1'53.523</b>	-0.124	134,013
81 M. GONZALEZ	ESP	Pertamina Almeria BCD Junior Team by MS	Yamaha YZF-R3	11:59'14.846	<b>1'53.147</b>	-0.376	134,459
55 G. HENDRA PRATAMA	INA	BIBLION YAMAHA MOTOXRACING	Yamaha YZF-R3	11:59'16.832	<b>1'51.826</b>	-1.321	136,047
95 S. DEROUE	NED	Motoport Kawasaki	Kawasaki Ninja 400	12:00'56.606	<b>1'51.736</b>	-0.090	136,157
55 G. HENDRA PRATAMA	INA	BIBLION YAMAHA MOTOXRACING	Yamaha YZF-R3	12:02'58.631	<b>1'50.517</b>	-1.219	137,658

07/07/2018 Start 11:55 End 12:11 The results are provisional until the end of the time limit for protests and appeals and the completion of the technical checks.

These data/results cannot be reproduced, stored and/or transmitted in whole or in part by any manner of electronic, mechanical, photocopying, recording, broadcasting or otherwise now known or herein after developed without the previous express consent by the copyright owner, except for reproduction in daily press and regular printed publications on sale to the public within 60 days of the event related to those data/results and always provided that copyright symbol appears together as follows below.

© DORNA WSBK ORGANIZATION Srl 2018





**PIRELLI Riviera di Rimini Round, 6 - 8 July 2018**  
**World Supersport 300 - Best Sectors & Speed Superpole 2**

Misano Circuit Sic 58 4.226 m

BEST LAP			
1	55 G. HENDRA PRATAMA	Yamaha YZF-R3	1'50.517
2	95 S. DEROUE	Kawasaki Ninja 400	1'50.861
3	8 M. PEREZ	Kawasaki Ninja 400	1'50.905
4	20 D. LOUREIRO	Kawasaki Ninja 400	1'51.125
5	81 M. GONZALEZ	Yamaha YZF-R3	1'51.212
6	48 T. BRIANTI	KTM RC 390 R	1'51.349
7	19 L. BERNARDI	Yamaha YZF-R3	1'51.576
8	33 D. VALLE	Yamaha YZF-R3	1'51.691
9	22 N. KALININ	Kawasaki Ninja 400	1'51.936
10	85 K. SABATUCCI	Yamaha YZF-R3	1'52.234
11	17 K. MEUFFELS	KTM RC 390 R	1'52.295
12	39 O. BONOLI	Yamaha YZF-R3	1'52.861

SPEED			
1	20 D. LOUREIRO	Kawasaki Ninja 400	181,8
2	95 S. DEROUE	Kawasaki Ninja 400	180,3
3	17 K. MEUFFELS	KTM RC 390 R	179,1
4	8 M. PEREZ	Kawasaki Ninja 400	178,2
5	81 M. GONZALEZ	Yamaha YZF-R3	177,9
6	22 N. KALININ	Kawasaki Ninja 400	177,3
7	33 D. VALLE	Yamaha YZF-R3	177,0
8	19 L. BERNARDI	Yamaha YZF-R3	176,5
9	55 G. HENDRA PRATAMA	Yamaha YZF-R3	175,9
10	85 K. SABATUCCI	Yamaha YZF-R3	175,0
11	48 T. BRIANTI	KTM RC 390 R	173,9
12	39 O. BONOLI	Yamaha YZF-R3	172,0

SEG. 1		SEG. 2		SEG. 3		SEG. 4				
1	55 G. HENDRA PRATAMA	28.338	1	55 G. HENDRA PRATAMA	26.380	1	55 G. HENDRA PRATAMA	24.005		
2	33 D. VALLE	28.445	2	20 D. LOUREIRO	26.445	2	95 S. DEROUE	24.138		
3	19 L. BERNARDI	28.570	3	95 S. DEROUE	26.445	3	8 M. PEREZ	24.181		
4	48 T. BRIANTI	28.588	4	22 N. KALININ	26.525	4	20 D. LOUREIRO	24.300		
5	81 M. GONZALEZ	28.619	5	48 T. BRIANTI	26.526	5	33 D. VALLE	24.324		
6	8 M. PEREZ	28.645	6	8 M. PEREZ	26.550	6	17 K. MEUFFELS	24.358		
7	85 K. SABATUCCI	28.693	7	19 L. BERNARDI	26.583	7	81 M. GONZALEZ	24.363		
8	95 S. DEROUE	28.715	8	33 D. VALLE	26.638	8	19 L. BERNARDI	24.437		
9	22 N. KALININ	28.779	9	85 K. SABATUCCI	26.656	9	55 G. HENDRA PRATAMA	24.440		
10	39 O. BONOLI	28.807	10	81 M. GONZALEZ	26.699	10	48 T. BRIANTI	24.489		
11	20 D. LOUREIRO	28.821	11	17 K. MEUFFELS	26.781	11	85 K. SABATUCCI	24.519		
12	17 K. MEUFFELS	29.102	12	39 O. BONOLI	26.958	12	39 O. BONOLI	32.327		
								12	85 K. SABATUCCI	24.551

07/07/2018

These data/results cannot be reproduced, stored and/or transmitted in whole or in part by any manner of electronic, mechanical, photocopying, recording, broadcasting or otherwise now known or herein after developed without the previous express consent by the copyright owner, except for reproduction in daily press and regular printed publications on sale to the public within 60 days of the event related to those data/results and always provided that copyright symbol appears together as follows below.

© DORNA WSBK ORGANIZATION Srl 2018



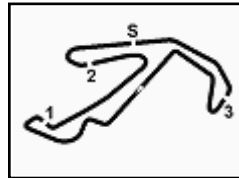
Official Fuel Supplier



Official Tyre Supplier



Official Timekeeper



## PIRELLI Riviera di Rimini Round, 6 - 8 July 2018

### World Supersport 300 - Ideal Times Superpole 2

Misano Circuit Sic 58 4.226 m

No.	Rider	Nat	Bike	Seg. 1	Seg. 2	Seg. 3	Seg. 4	Ideal Time		
				Diff. 1	Diff. 2	Diff. 3	Diff. 4	Best Lap	Pos.	Diff.
1	<b>55 G. HENDRA PRATAMA</b>	INA	Yamaha YZF-R3	<b>28.338</b>	<b>26.380</b>	31.694 0.100	<b>24.005</b>	<b>1'50.417</b>	1	0.100
2	<b>8 M. PEREZ</b>	ESP	Kawasaki Ninja 400	28.645 0.028	26.550 0.063	31.374	24.138 0.107	<b>1'50.707</b>	3	0.198
3	<b>95 S. DEROUE</b>	NED	Kawasaki Ninja 400	28.715	26.445	31.338	24.363	<b>1'50.861</b>	2	
4	<b>20 D. LOUREIRO</b>	RSA	Kawasaki Ninja 400	28.821	26.445 0.169	31.390	24.300	<b>1'50.956</b>	4	0.169
5	<b>33 D. VALLE</b>	ESP	Yamaha YZF-R3	28.445	26.638 0.246	31.522 0.403	24.437	<b>1'51.042</b>	8	0.649
6	<b>81 M. GONZALEZ</b>	ESP	Yamaha YZF-R3	28.619 0.041	26.699	31.606	24.181 0.066	<b>1'51.105</b>	5	0.107
7	<b>22 N. KALININ</b>	UKR	Kawasaki Ninja 400	28.779 0.054	26.525 0.248	<b>31.319</b> 0.485	24.519 0.007	<b>1'51.142</b>	9	0.794
8	<b>48 T. BRIANTI</b>	ITA	KTM RC 390 R	28.588	26.526 0.036	31.829 0.046	24.324	<b>1'51.267</b>	6	0.082
9	<b>19 L. BERNARDI</b>	ITA	Yamaha YZF-R3	28.570 0.233	26.583	31.650	24.489 0.051	<b>1'51.292</b>	7	0.284
10	<b>17 K. MEUFFELS</b>	NED	KTM RC 390 R	29.102 0.371	26.781	31.601	24.440	<b>1'51.924</b>	11	0.371
11	<b>85 K. SABATUCCI</b>	ITA	Yamaha YZF-R3	28.693 0.152	26.656 0.013	32.085 0.042	24.551 0.042	<b>1'51.985</b>	10	0.249
12	<b>39 O. BONOLI</b>	ITA	Yamaha YZF-R3	28.807	26.958	32.327 0.292	24.358 0.119	<b>1'52.450</b>	12	0.411
<b>Overall Ideal Time</b>				28.338	26.380	31.319	24.005	<b>1'50.042</b>		

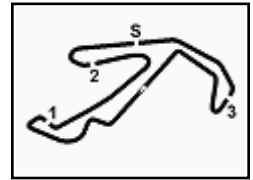
07/07/2018

These data/results cannot be reproduced, stored and/or transmitted in whole or in part by any manner of electronic, mechanical, photocopying, recording, broadcasting or otherwise now known or herein after developed without the previous express consent by the copyright owner, except for reproduction in daily press and regular printed publications on sale to the public within 60 days of the event related to those data/results and always provided that copyright symbol appears together as follows below.

© DORNA WSBK ORGANIZATION Srl 2018







## PIRELLI Riviera di Rimini Round, 6 - 8 July 2018

### World Supersport 300 - Chronological Analysis Superpole 2

Misano Circuit Sic 58 4.226 m

1 / 2

1° 55 G. HENDRA PRATAMA (1'50.517)							
Lap	Seg.1	Seg.2	Seg.3	Seg.4	Lap Time	km/h	Local Time
1		27.839	32.320	24.511	170.6	11:57'25.006	
2	28.718	26.836	31.985	24.287	1'51.826	172.8	11:59'16.832
3	28.534	26.718	<b>31.694</b>	24.336	1'51.282C	173.9	12:01'08.114
4	<b>28.338</b>	<b>26.380</b>	31.794	<b>24.005</b>	<b>1'50.517</b>	<b>175.9</b>	12:02'58.631
5	33.135	27.911	32.656	47.711	2'21.413P	173.6	12:05'20.044
6	3'42.398	27.863	32.304	24.519	5'07.084P	168.8	12:10'27.128

2° 95 S. DEROUE (1'50.861)							
Lap	Seg.1	Seg.2	Seg.3	Seg.4	Lap Time	km/h	Local Time
1		28.091	32.220	25.097	171.2	11:57'08.449	
2	29.615	28.229	32.812	25.765	1'56.421	172.0	11:59'04.870
3	28.795	26.712	31.603	24.626	1'51.736	<b>180.3</b>	12:00'56.606
4	28.940	28.138	34.172	25.959	1'57.209	154.5	12:02'53.815
5	28.895	26.712	31.635	24.479	1'51.721C	175.0	12:04'45.536
6	31.612	27.265	32.529	30.394	2'01.800C	168.0	12:06'47.336
7	28.840	26.490	33.189	26.803	1'55.322	171.7	12:08'42.658
8	<b>28.715</b>	<b>26.445</b>	<b>31.338</b>	<b>24.363</b>	<b>1'50.861</b>	178.5	12:10'33.519

3° 8 M. PEREZ (1'50.905)							
Lap	Seg.1	Seg.2	Seg.3	Seg.4	Lap Time	km/h	Local Time
1		28.477	32.956	25.627	168.2	11:57'16.041	
2	29.227	26.928	34.741	24.661	1'55.557	172.0	11:59'11.598
3	28.867	26.733	31.911	24.621	1'52.132	173.6	12:01'03.730
4	33.649	27.719	32.241	24.787	1'58.396	174.8	12:03'02.126
5	28.700	26.902	31.466	<b>24.138</b>	1'51.206	175.9	12:04'53.332
6	<b>28.645</b>	<b>26.550</b>	31.451	24.435	1'51.081	<b>178.2</b>	12:06'44.413
7	28.808	26.556	39.108	27.662	2'02.134	95.2	12:08'46.547
8	28.673	26.613	<b>31.374</b>	<b>24.245</b>	<b>1'50.905</b>	176.2	12:10'37.452

4° 20 D. LOUREIRO (1'51.125)							
Lap	Seg.1	Seg.2	Seg.3	Seg.4	Lap Time	km/h	Local Time
1		28.241	35.341	25.881	138.8	11:57'17.784	
2	29.589	27.058	34.098	24.776	1'55.521	155.0	11:59'13.305
3	29.384	26.736	31.412	24.493	1'52.025	179.1	12:01'05.330
4	29.386	27.670	33.354	24.909	1'55.319	178.5	12:03'00.649
5	<b>28.821</b>	26.614	<b>31.390</b>	<b>24.300</b>	<b>1'51.125</b>	179.7	12:04'51.774
6	29.027	<b>26.445</b>	31.788	27.900	1'55.160C	176.8	12:06'46.934
7	29.667	26.550	33.912	27.538	1'57.667	153.4	12:08'44.601
8	29.347	26.585	31.596	24.785	1'52.313	<b>181.8</b>	12:10'36.914

5° 81 M. GONZALEZ (1'51.212)							
Lap	Seg.1	Seg.2	Seg.3	Seg.4	Lap Time	km/h	Local Time
1		27.807	32.846	24.878	168.8	11:57'21.699	
2	29.086	27.268	32.246	24.547	1'53.147	170.6	11:59'14.846
3	28.889	26.973	32.098	24.393	1'52.353C	171.7	12:01'07.199
4	28.868	26.900	31.889	<b>24.181</b>	1'51.838	176.2	12:02'59.037
5	<b>28.619</b>	26.714	31.921	24.589	1'51.843	175.0	12:04'50.880
6	29.568	27.881	32.182	25.016	1'54.647	<b>177.9</b>	12:06'45.527
7	28.666	26.743	32.447	31.290	1'59.146	171.4	12:08'44.673
8	28.660	<b>26.699</b>	<b>31.606</b>	<b>24.249</b>	<b>1'51.212</b>	171.7	12:10'35.885

6° 48 T. BRIANTI (1'51.349)							
Lap	Seg.1	Seg.2	Seg.3	Seg.4	Lap Time	km/h	Local Time
1						11:55'25.960	
2	57.818	28.790	32.449	25.067	2'24.124P	173.6	11:57'50.084
3	29.449	26.979	31.945	24.742	1'53.115	<b>173.9</b>	11:59'43.199
4	29.009	26.890	31.891	24.810	1'52.600	<b>173.9</b>	12:01'35.799
5	28.928	26.762	<b>31.829</b>	24.557	1'52.076	<b>173.9</b>	12:03'27.875
6	28.731	26.716	31.909	24.538	1'51.894	173.1	12:05'19.769
7	28.783	26.649	32.066	24.496	1'51.994	172.0	12:07'11.763
8	<b>28.588</b>	26.562	31.875	<b>24.324</b>	<b>1'51.349</b>	172.0	12:09'03.112

9	28.799	<b>26.526</b>	31.905	24.500	1'51.730	172.8	12:10'54.842
---	--------	---------------	--------	--------	----------	-------	--------------

7° 19 L. BERNARDI (1'51.576)							
Lap	Seg.1	Seg.2	Seg.3	Seg.4	Lap Time	km/h	Local Time
1		28.585	32.897	25.791	169.5	11:57'15.856	
2	29.520	27.014	32.591	25.440	1'54.565	166.4	11:59'10.421
3	30.983	27.071	31.943	24.784	1'54.781C	172.2	12:01'05.202
4	28.656	27.536	33.063	25.549	1'54.804C	166.4	12:03'00.006
5	28.664	27.232	31.905	<b>24.489</b>	1'52.290	172.2	12:04'52.296
6	28.803	<b>26.583</b>	<b>31.650</b>	24.540	<b>1'51.576</b>	<b>176.5</b>	12:06'43.872
7	30.898	27.078	32.524	28.947	1'59.447	171.7	12:08'43.319
8	<b>28.570</b>	26.618	31.920	24.686	1'51.794	173.6	12:10'35.113

8° 33 D. VALLE (1'51.691)							
Lap	Seg.1	Seg.2	Seg.3	Seg.4	Lap Time	km/h	Local Time
1		28.322	33.083	25.588	169.0	11:57'16.523	
2	29.060	27.077	32.193	27.259	1'55.589	171.7	11:59'12.112
3	28.914	27.070	31.709	24.712	1'52.405	173.4	12:01'04.517
4	29.944	28.570	32.304	25.093	1'55.911	176.5	12:03'00.428
5	<b>28.445</b>	26.884	31.925	<b>24.437</b>	<b>1'51.691</b>	169.5	12:04'52.119
6	28.833	26.754	<b>31.522</b>	26.291	1'53.400C	<b>177.0</b>	12:06'45.519
7	28.798	<b>26.638</b>	31.886	31.076	1'58.398	170.9	12:08'43.917
8	29.115	26.861	31.896	24.880	1'52.752	171.2	12:10'36.669

9° 22 N. KALININ (1'51.936)							
Lap	Seg.1	Seg.2	Seg.3	Seg.4	Lap Time	km/h	Local Time
1		28.215	32.707	25.618	168.5	11:57'15.441	
2	29.644	28.064	32.545	25.160	1'55.413	169.3	11:59'10.854
3	29.393	27.323	31.988	26.415	1'55.119	174.5	12:01'05.973
4	28.995	27.198	31.680	<b>24.519</b>	1'52.392	175.3	12:02'58.365
5	28.992	26.941	31.920	24.623	1'52.476	<b>177.3</b>	12:04'50.841
6	28.833	26.773	31.804	24.526	<b>1'51.936</b>	172.8	12:06'42.777
7	28.839	27.110	37.651	27.695	2'01.295	173.4	12:08'44.072
8	<b>28.779</b>	<b>26.525</b>	<b>31.319</b>	24.608	1'51.231C	175.3	12:10'35.303

10° 85 K. SABATUCCI (1'52.234)							
Lap	Seg.1	Seg.2	Seg.3	Seg.4	Lap Time	km/h	Local Time
1		28.955	32.602	24.889	170.1	11:57'09.741	
2	29.482	26.957	32.237	24.971	1'53.647	173.4	11:59'03.388
3	29.270	27.048	32.342	25.088	1'53.748	168.2	12:00'57.136
4	29.003	26.922	<b>32.085</b>	<b>24.551</b>	1'52.561	<b>175.0</b>	12:02'49.697
5	30.882	27.305	34.020	26.984	1'59.191	160.2	12:04'48.888
6	29.869	27.835	33.222	25.106	1'56.032	169.0	12:06'44.920
7	<b>28.693</b>	<b>26.656</b>	33.588	28.967	1'57.904	164.1	12:08'42.824
8	28.845	26.669	32.127	24.593	<b>1'52.234</b>	172.2	12:10'35.058

11° 17 K. MEUFFELS (1'52.295)							
Lap	Seg.1	Seg.2	Seg.3	Seg.4	Lap Time	km/h	Local Time
1		27.814	32.522	25.202	173.6	11:57'09.618	
2	29.388	26.969	32.385	25.164	1'53.906	174.8	11:59'03.524
3	29.492	26.782	32.063	25.173	1'53.510C	176.2	12:00'57.034
4	29.346	26.808	32.807	24.992	1'53.953	166.9	12:02'50.987
5	29.331	26.925	34.472	24.939	1'55.667	145.7	12:04'46.654
6	29.170	26.933	32.093	24.784	1'52.980	173.1	12:06'39.634
7	<b>29.102</b>	30.651	34.823	29.535	2'04.111	161.9	12:08'43.745
8	29.473	<b>26.781</b>	<b>31.601</b>	<b>24.440</b>	<b>1'52.295</b>	<b>179.1</b>	12:10'36.040

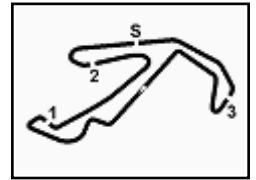
12° 39 O. BONOLI (1'52.861)							
Lap	Seg.1	Seg.2	Seg.3	Seg.4	Lap Time	km/h	Local Time
1		28.424	32.734	24.937	172.2	11:57'09.928	
2	29.434	27.042	<b>32.327</b>	24.720	1'53.523	171.7	11:59'03.451
3	28.967	27.363	32.331	24.755	1'53.416	<b>172.0</b>	12:00'56.867
4	<b>28.807</b>	<b>26.958</b>	32.619	24.477	<b>1'52.861</b>	163.6	12:02'49.728
5	31.908	29.721	35.309	<b>24.358</b>	2'01.296	160.0	12:04'51.024

07/07/2018 P = Pits In/Out - C = Lap Time Cancelled

These data/results cannot be reproduced, stored and/or transmitted in whole or in part by any manner of electronic, mechanical, photocopying, recording, broadcasting or otherwise now known or herein after developed without the previous express consent by the copyright owner, except for reproduction in daily press and regular printed publications on sale to the public within 60 days of the event related to those data/results and always provided that copyright symbol appears together as follows below.

© DORNA WSBK ORGANIZATION Srl 2018





Misano Circuit Sic 58 4.226 m

2 / 2

**PIRELLI Riviera di Rimini Round, 6 - 8 July 2018**  
**World Supersport 300 - Chronological Analysis Superpole 2**

6	29.097	26.961	32.391	24.534	1'52.983	167,4	12:06'44.007
7	28.872	27.127	32.574	24.599	1'53.172	164,6	12:08'37.179
8	28.906	27.339	32.748	24.774	1'53.767	163,4	12:10'30.946

07/07/2018 P = Pits In/Out - C = Lap Time Cancelled

These data/results cannot be reproduced, stored and/or transmitted in whole or in part by any manner of electronic, mechanical, photocopying, recording, broadcasting or otherwise now known or herein after developed without the previous express consent by the copyright owner, except for reproduction in daily press and regular printed publications on sale to the public within 60 days of the event related to those data/results and always provided that copyright symbol appears together as follows below.

© DORNA WSBK ORGANIZATION Srl 2018



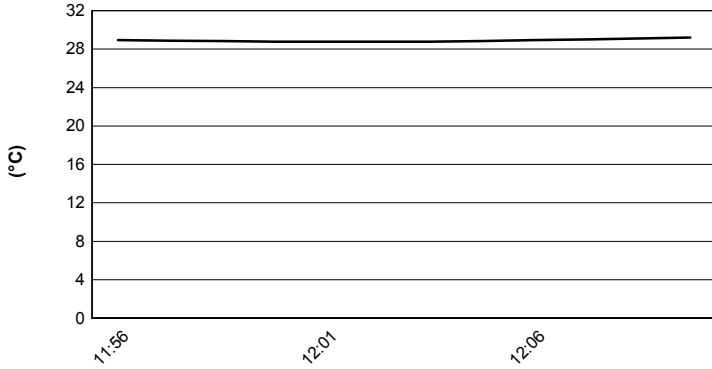




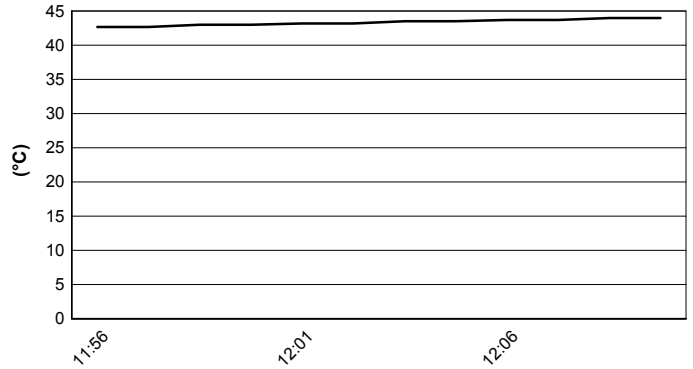
Misano Circuit Sic 58 4.226 m

**PIRELLI Riviera di Rimini Round, 6 - 8 July 2018**  
**World Supersport 300 - Weather Report Superpole 2**  
 Session started 11:55 - Session ended 12:11

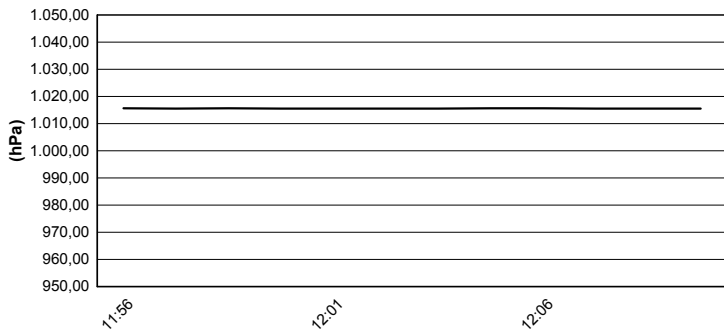
### Air Temperature



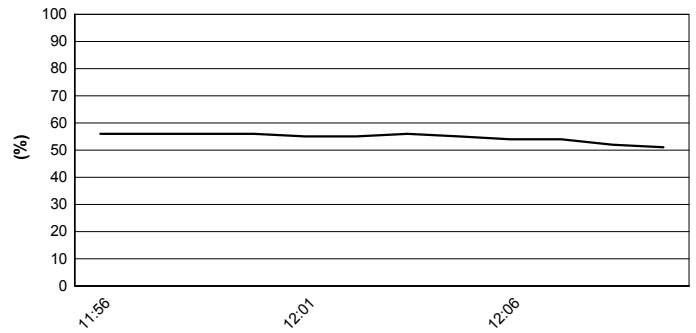
### Track Temperature



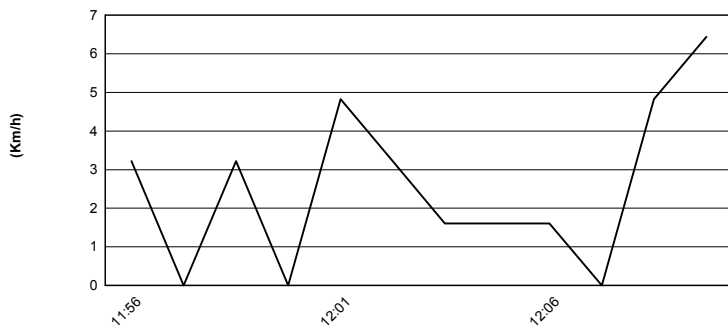
### Air Pressure



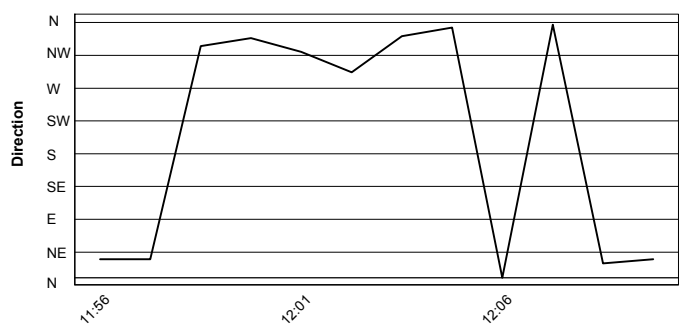
### Humidity



### Wind Speed



### Wind Direction



07/07/2018

These data/results cannot be reproduced, stored and/or transmitted in whole or in part by any manner of electronic, mechanical, photocopying, recording, broadcasting or otherwise now known or herein after developed without the previous express consent by the copyright owner, except for reproduction in daily press and regular printed publications on sale to the public within 60 days of the event related to those data/results and always provided that copyright symbol appears together as follows below.

© DORNA WSBK ORGANIZATION Srl 2018



Official Fuel Supplier



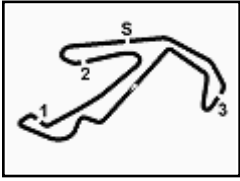
FICR PERUGIA TIMING

Official Tyre Supplier



Official Timekeeper





Misano Circuit Sic 58 4.226 m

**PIRELLI Riviera di Rimini Round, 6 - 8 July 2018**  
**World Supersport 300 - TISSOT Superpole Award**

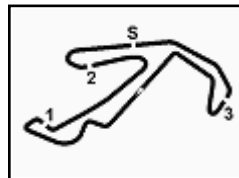
	Points	Points From First	Points From Previous	April 15 ARAGÓN	April 22 ASSEN	May 13 IMOLA	May 27 DONINGTON PARK	June 10 BRNO	July 8 MISANO	September 16 PORTIMÃO	September 30 MAGNY COURS								
26 <b>RUSMIPUTRO</b> Ali Adriansyah (INA)	4	91	0			4													
27 <b>PRATNA</b> Imanuel Putra (INA)	1	94	3				1												

07/07/2018

These data/results cannot be reproduced, stored and/or transmitted in whole or in part by any manner of electronic, mechanical, photocopying, recording, broadcasting or otherwise now known or herein after developed without the previous express consent by the copyright owner, except for reproduction in daily press and regular printed publications on sale to the public within 60 days of the event related to those data/results and always provided that copyright symbol appears together as follows below.

© DORNA WSBK ORGANIZATION Srl 2018





Misano Circuit Sic 58 4.226 m

## PIRELLI Riviera di Rimini Round, 6 - 8 July 2018

### World Supersport 300 - Superpole Ranking

	2017	2018
<b>01 Motorland Aragon</b>	Deroue (Ned) Kaw 2'12.712 (137,7 Km/h)	Perez (Esp) Kaw 2'07.938 (142,9 Km/h)
<b>02 TT Circuit Assen</b>	Sanchez (Esp) Yam 1'53.814 (143,7 Km/h)	Perez (Esp) Kaw 1'50.165 (148,4 Km/h)
<b>03 Autodromo Internazionale Enzo e Dino</b>	Perez (Esp) Hon 2'10.115 (136,6 Km/h)	Carrasco (Esp) Kaw 2'07.076 (139,8 Km/h)
<b>04 Donington Park</b>	Coppola (Ita) Yam 1'46.150 (136,4 Km/h)	Carrasco (Esp) Kaw 1'42.758 (140,9 Km/h)
<b>05 Automotodrom Brno</b>		Hendra Pratama (Ina) Yam 2'17.396 (141,6 Km/h)
<b>06 Misano World Circuit "Marco Simoncelli"</b>	Perez (Esp) Hon 1'52.490 (135,2 Km/h)	Hendra Pratama (Ina) Yam 1'50.517 (137,7 Km/h)
<b>07 Autódromo Internacional do Algarve</b>	Coppola (Ita) Yam 2'00.128 (137,6 Km/h)	
<b>08 Magny-Cours</b>	Muel (Fra) Yam 2'16.866 (116,0 Km/h)	

#### 2018

- 2 **G. Hendra Pratama**
- 2 M. Perez
- 2 A. Carrasco

#### ALL TIMES

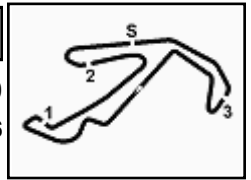
- 4 M. Perez
- 3 A. Coppola
- 2 A. Carrasco
- 2 **G. Hendra Pratama**
- 1 S. Deroue
- 1 B. Sanchez
- 1 M. Garcia
- 1 A. Muel

07/07/2018

These data/results cannot be reproduced, stored and/or transmitted in whole or in part by any manner of electronic, mechanical, photocopying, recording, broadcasting or otherwise now known or herein after developed without the previous express consent by the copyright owner, except for reproduction in daily press and regular printed publications on sale to the public within 60 days of the event related to those data/results and always provided that copyright symbol appears together as follows below.

© DORNA WSBK ORGANIZATION Srl 2018





## PIRELLI Riviera di Rimini Round, 6 - 8 July 2018

### World Supersport 300 - Best Laps & Speeds

Misano Circuit Sic 58 4.226 m

1 / 2

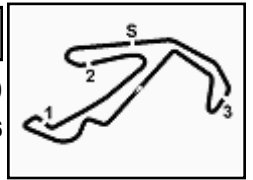
No.	Rider Bike	Nat	Best Lap		FP1		FP2		QP1		QP2	
			LL	SPD	LL	SPD	LL	SPD	LL	SPD	LL	SPD
1	<b>55 G. HENDRA PRATAMA</b> Yamaha YZF-R3	INA	<b>1'50.517</b> 22 175,9		1'51.217 11 174,4		2'03.930 6 171,9				<b>1'50.517</b> 5 <b>175,9</b>	
2	<b>95 S. DEROUE</b> Kawasaki Ninja 400	NED	<b>1'50.861</b> 24 180,3		1'51.623 14 177,3		2'13.882 3 174,1				<b>1'50.861</b> 7 <b>180,3</b>	
3	<b>8 M. PEREZ</b> Kawasaki Ninja 400	ESP	<b>1'50.905</b> 28 181,2		1'52.523 14 180,9			1'51.490 7 <b>181,2</b>			<b>1'50.905</b> 7 178,2	
4	<b>22 N. KALININ</b> Kawasaki Ninja 400	UKR	<b>1'51.092</b> 35 182,4		1'52.416 16 178,5		2'08.191 6 171,4	<b>1'51.092</b> 6 <b>182,4</b>			1'51.936 7 177,3	
5	<b>20 D. LOUREIRO</b> Kawasaki Ninja 400	RSA	<b>1'51.125</b> 33 181,8		1'52.010 13 179,7		2'05.369 13 178,5				<b>1'51.125</b> 7 <b>181,8</b>	
6	<b>81 M. GONZALEZ</b> Yamaha YZF-R3	ESP	<b>1'51.212</b> 21 177,9		1'51.850 14 175,3						<b>1'51.212</b> 7 <b>177,9</b>	
7	<b>48 T. BRIANTI</b> KTM RC 390 R	ITA	<b>1'51.349</b> 22 175,6		1'51.871 14 <b>175,6</b>						<b>1'51.349</b> 8 173,9	
8	<b>51 M. BASTIANELLI</b> Kawasaki Ninja 400	ITA	<b>1'51.548</b> 19 174,7		1'52.438 12 <b>174,7</b>			<b>1'51.548</b> 7 174,4				
9	<b>19 L. BERNARDI</b> Yamaha YZF-R3	ITA	<b>1'51.576</b> 22 176,4		1'51.976 15 <b>176,4</b>						<b>1'51.576</b> 7 <b>176,4</b>	
10	<b>69 M. HERRERA</b> Yamaha YZF-R3	ESP	<b>1'51.674</b> 19 179,4		1'52.378 14 176,4			<b>1'51.674</b> 5 <b>179,4</b>				
11	<b>33 D. VALLE</b> Yamaha YZF-R3	ESP	<b>1'51.691</b> 21 177,0		1'51.885 14 176,1						<b>1'51.691</b> 7 <b>177,0</b>	
12	<b>17 K. MEUFFELS</b> KTM RC 390 R	NED	<b>1'51.716</b> 25 179,1		<b>1'51.716</b> 16 178,2		2'06.799 2 175,3				1'52.295 7 <b>179,1</b>	
13	<b>14 E. DE LA VEGA</b> Kawasaki Ninja 400	FRA	<b>1'51.890</b> 29 178,8		1'52.526 16 176,1		2'07.356 6 170,8	<b>1'51.890</b> 7 <b>178,8</b>				
14	<b>85 K. SABATUCCI</b> Yamaha YZF-R3	ITA	<b>1'51.913</b> 22 178,5		<b>1'51.913</b> 15 <b>178,5</b>						1'52.234 7 175,0	
15	<b>27 F. ROVELLI</b> Kawasaki Ninja 400	ITA	<b>1'51.916</b> 22 183,0		1'52.757 15 172,8			<b>1'51.916</b> 7 <b>183,0</b>				
16	<b>39 O. BONOLI</b> Yamaha YZF-R3	ITA	<b>1'51.932</b> 22 174,7		<b>1'51.932</b> 15 <b>174,7</b>						1'52.861 7 171,9	
17	<b>2 A. CARRASCO</b> Kawasaki Ninja 400	ESP	<b>1'51.953</b> 28 174,1		1'52.819 12 <b>174,1</b>		2'11.701 8 173,0	<b>1'51.953</b> 8 <b>174,1</b>				
18	<b>41 J. JÄHNIG</b> KTM RC 390 R	GER	<b>1'52.166</b> 22 181,8		<b>1'52.166</b> 15 180,6			1'52.564 7 <b>181,8</b>				
19	<b>43 L. GRUNWALD</b> KTM RC 390 R	GER	<b>1'52.215</b> 22 179,7		1'52.393 15 <b>179,7</b>			<b>1'52.215</b> 7 178,8				
20	<b>96 I. PRATNA</b> Yamaha YZF-R3	INA	<b>1'52.359</b> 22 181,5		<b>1'52.359</b> 15 177,9			1'52.608 7 <b>181,5</b>				
21	<b>15 G. VAN STRAALEN</b> KTM RC 390 R	NED	<b>1'52.437</b> 24 178,2		1'53.273 15 176,7		2'04.572 2 170,8	<b>1'52.437</b> 7 <b>178,2</b>				
22	<b>21 B. SANCHEZ</b> Kawasaki Ninja 400	ESP	<b>1'52.450</b> 23 182,7		1'52.638 16 <b>182,7</b>			<b>1'52.450</b> 7 <b>182,7</b>				
23	<b>65 J. FACCO</b> Yamaha YZF-R3	ITA	<b>1'52.589</b> 28 175,0		1'52.813 14 172,5		2'02.794 7 168,2	<b>1'52.589</b> 7 <b>175,0</b>				
24	<b>54 F. FULIGNI</b> Yamaha YZF-R3	ITA	<b>1'52.601</b> 37 177,6		1'52.662 16 175,6		2'04.550 14 171,1	<b>1'52.601</b> 7 <b>177,6</b>				
25	<b>12 A. RUSMIPUTRO</b> Yamaha YZF-R3	INA	<b>1'52.717</b> 18 176,1		1'53.083 16 <b>176,1</b>			<b>1'52.717</b> 2 172,2				

07/07/2018

These data/results cannot be reproduced, stored and/or transmitted in whole or in part by any manner of electronic, mechanical, photocopying, recording, broadcasting or otherwise now known or herein after developed without the previous express consent by the copyright owner, except for reproduction in daily press and regular printed publications on sale to the public within 60 days of the event related to those data/results and always provided that copyright symbol appears together as follows below.

© DORNA WSBK ORGANIZATION Srl 2018





## PIRELLI Riviera di Rimini Round, 6 - 8 July 2018

### World Supersport 300 - Best Laps & Speeds

Misano Circuit Sic 58 4.226 m

2 / 2

No.	Rider Bike	Nat	Best Lap		FP1		FP2		QP1		QP2							
			LL	SPD	LL	SPD	LL	SPD	LL	SPD	LL	SPD						
26	71 T. EDWARDS Kawasaki Ninja 400	AUS	<b>1'52.880</b>	23 180,3	1'55.358	7 174,7	2'14.526	9 174,1	<b>1'52.880</b>	7 <b>180,3</b>								
27	93 W. KHAN Kawasaki Ninja 400	NED	<b>1'52.978</b>	23 176,4	1'54.038	11 <b>176,4</b>	2'15.499	5 175,0	<b>1'52.978</b>	7 <b>176,4</b>								
28	64 H. DE CANCELLIS Yamaha YZF-R3	FRA	<b>1'53.238</b>	34 176,7	<b>1'53.238</b>	15 174,7	2'06.312	12 168,7	1'53.248	7 <b>176,7</b>								
29	79 T. ALONSO Yamaha YZF-R3	POR	<b>1'53.507</b>	27 178,8	1'54.263	8 175,3	2'05.090	12 174,7	<b>1'53.507</b>	7 <b>178,8</b>								
30	30 D. BLIN Yamaha YZF-R3	POL	<b>1'53.530</b>	31 176,7	<b>1'53.530</b>	16 <b>176,7</b>	2'07.330	8 166,4	1'54.000	7 <b>176,7</b>								
31	3 T. TOPARIS Kawasaki Ninja 400	AUS	<b>1'53.709</b>	24 177,3	<b>1'53.709</b>	14 177,0	2'09.128	5 174,4	1'53.848	5 <b>177,3</b>								
32	97 M. KAPPLER KTM RC 390 R	GER	<b>1'53.740</b>	21 183,9	1'54.100	16 176,1			<b>1'53.740</b>	5 <b>183,9</b>								
33	28 D. KOOPMAN Yamaha YZF-R3	NED	<b>1'53.991</b>	36 172,5	1'54.729	16 172,2	2'06.005	13 <b>172,5</b>	<b>1'53.991</b>	7 169,8								
34	13 D. IOZZO Honda CBR500R	RSA	<b>1'54.275</b>	24 173,0	1'54.864	15 171,9	2'13.524	2 163,1	<b>1'54.275</b>	7 <b>173,0</b>								
35	44 S. LOCHOFF Kawasaki Ninja 400	RSA	<b>1'54.973</b>	35 176,7	<b>1'54.973</b>	16 174,1	2'03.348	12 173,6	1'55.325	7 <b>176,7</b>								
36	7 N. SETTIMO Honda CBR500R	ITA	<b>1'55.050</b>	37 176,4	<b>1'55.050</b>	16 173,0	2'06.141	14 169,5	1'55.128	7 <b>176,4</b>								
37	78 J. FORAY Kawasaki Ninja 400	FRA	<b>1'55.222</b>	20 180,6	1'56.250	6 170,6	2'15.468	7 173,6	<b>1'55.222</b>	7 <b>180,6</b>								
38	58 T. FINOCCHIARO Honda CBR500R	GBR	<b>1'55.977</b>	29 172,5	<b>1'55.977</b>	14 172,2	2'10.060	13 170,6	1'57.982	2 <b>172,5</b>								
39	5 R. VOS KTM RC 390 R	NED	<b>1'56.064</b>	26 174,1	1'56.854	15 <b>174,1</b>	2'14.694	3 168,7	<b>1'56.064</b>	8 171,7								
40	62 J. SCHULTZ Yamaha YZF-R3	RSA	<b>1'57.814</b>	21 168,4	<b>1'57.814</b>	14 <b>168,4</b>			1'57.934	7 165,3								

07/07/2018

These data/results cannot be reproduced, stored and/or transmitted in whole or in part by any manner of electronic, mechanical, photocopying, recording, broadcasting or otherwise now known or herein after developed without the previous express consent by the copyright owner, except for reproduction in daily press and regular printed publications on sale to the public within 60 days of the event related to those data/results and always provided that copyright symbol appears together as follows below.

© DORNA WSBK ORGANIZATION Srl 2018

