

TT Circuit Assen 4.542 m

1 / 2

## Dutch Round, 20-21-22 April 2018

### World Supersport 300 - Results Warm Up

No.	Rider	Nat	Team	Bike	Time	Gap	Rel.	Laps	Speed	
									Avg	Max
1	95 S. DEROUE	NED	Motoport Kawasaki	Kawasaki Ninja 400	<b>1'51.539</b>			5	146,596	<b>185,6</b>
2	6 R. SCHOTMAN	NED	Motoport Kawasaki	Kawasaki Ninja 400	<b>1'51.834</b>	0.295	0.295	5	146,210	<b>184,9</b>
3	43 L. GRUNWALD	GER	Freudenberg KTM WorldSSP Team	KTM RC 390 R	<b>1'51.881</b>	0.342	0.047	5	146,148	<b>188,8</b>
4	17 K. MEUFFELS	NED	KTM Fortron Junior Team	KTM RC 390 R	<b>1'52.056</b>	0.517	0.175	5	145,920	<b>189,8</b>
5	71 T. EDWARDS	AUS	Nutec - Benjan - Kawasaki	Kawasaki Ninja 400	<b>1'52.091</b>	0.552	0.035	5	145,874	<b>190,5</b>
6	93 W. KHAN	NED	Nutec - Benjan - Kawasaki	Kawasaki Ninja 400	<b>1'52.274</b>	0.735	0.183	5	145,637	<b>185,9</b>
7	97 M. KAPPLER	GER	Freudenberg KTM WorldSSP Team	KTM RC 390 R	<b>1'52.377</b>	0.838	0.103	5	145,503	<b>188,8</b>
8	55 G. HENDRA PRATAMA	INA	BIBLION YAMAHA MOTOXRACING	Yamaha YZF-R3	<b>1'52.397</b>	0.858	0.020	5	145,477	<b>187,5</b>
9	14 E. DE LA VEGA	FRA	GP Project Team	Kawasaki Ninja 400	<b>1'52.539</b>	1.000	0.142	5	145,294	<b>185,6</b>
10	21 B. SANCHEZ	ESP	ETG Racing	Kawasaki Ninja 400	<b>1'52.641</b>	1.102	0.102	5	145,162	<b>185,9</b>
11	20 D. LOUREIRO	RSA	DS Junior Team	Kawasaki Ninja 400	<b>1'52.665</b>	1.126	0.024	5	145,131	<b>188,2</b>
12	16 M. LUNA BAYEN	ESP	C.M. Racing	Kawasaki Ninja 400	<b>1'52.797</b>	1.258	0.132	5	144,961	<b>189,5</b>
13	8 M. PEREZ	ESP	Kawasaki ParkinGO Team	Kawasaki Ninja 400	<b>1'52.928</b>	1.389	0.131	4	144,793	
14	15 G. VAN STRAALLEN	NED	KTM Fortron Racing Team	KTM RC 390 R	<b>1'52.994</b>	1.455	0.066	5	144,709	<b>186,5</b>
15	22 M. KALININ	UKR	GP Project Team	Kawasaki Ninja 400	<b>1'53.048</b>	1.509	0.054	5	144,639	<b>187,8</b>
16	81 M. GONZALEZ	ESP	Pertamina Almeria BCD Junior Team by MS	Yamaha YZF-R3	<b>1'53.076</b>	1.537	0.028	5	144,604	<b>191,5</b>
17	41 J. JÄHNIG	GER	Freudenberg KTM Junior Team	KTM RC 390 R	<b>1'53.264</b>	1.725	0.188	5	144,364	<b>187,2</b>
18	69 M. HERRERA	ESP	BCD Yamaha MS Racing	Yamaha YZF-R3	<b>1'53.314</b>	1.775	0.050	5	144,300	<b>189,5</b>
19	99 P. GRASSIA	ITA	BIBLION YAMAHA MOTOXRACING	Yamaha YZF-R3	<b>1'53.389</b>	1.850	0.075	5	144,204	<b>180,9</b>
20	12 A. RUSMIPUTRO	INA	Pertamina Almeria BCD by MS Racing	Yamaha YZF-R3	<b>1'53.427</b>	1.888	0.038	5	144,156	<b>189,8</b>
21	33 D. VALLE	ESP	BCD Yamaha MS Racing	Yamaha YZF-R3	<b>1'53.825</b>	2.286	0.398	5	143,652	<b>183,4</b>
22	5 R. VOS	NED	KTM Fortron Racing Team	KTM RC 390 R	<b>1'54.024</b>	2.485	0.199	5	143,401	<b>186,5</b>
23	18 A. MURLEY	GBR	Team Toth - Yart	Yamaha YZF-R3	<b>1'54.174</b>	2.635	0.150	5	143,213	<b>176,8</b>
24	28 D. KOOPMAN	NED	GRT Yamaha WorldSSP300 Team	Yamaha YZF-R3	<b>1'54.314</b>	2.775	0.140	5	143,038	<b>187,8</b>
25	27 F. ROVELLI	ITA	Kawasaki ParkinGO Team	Kawasaki Ninja 400	<b>1'54.408</b>	2.869	0.094	5	142,920	<b>186,5</b>
26	64 H. DE CANCELLIS	FRA	Team Toth - Yart	Yamaha YZF-R3	<b>1'54.465</b>	2.926	0.057	5	142,849	<b>179,7</b>
27	96 I. PRATNA	INA	TERRA E MOTO	Yamaha YZF-R3	<b>1'55.335</b>	3.796	0.870	5	141,771	<b>183,7</b>
28	54 F. FULIGNI	ITA	GRT Yamaha WorldSSP300 Team	Yamaha YZF-R3	<b>1'55.428</b>	3.889	0.093	5	141,657	<b>182,7</b>
29	19 L. BERNARDI	ITA	Team Trasimeno	Yamaha YZF-R3	<b>1'55.588</b>	4.049	0.160	5	141,461	<b>181,5</b>
30	4 M. MERCKELBAGH	NED	Benro Racing	Yamaha YZF-R3	<b>1'55.841</b>	4.302	0.253	5	141,152	<b>181,2</b>
31	13 D. IOZZO	RSA	Racedays	Honda CBR500R	<b>1'56.081</b>	4.542	0.240	5	140,860	<b>185,2</b>
32	30 D. BLIN	POL	Polish Talent Team	Yamaha YZF-R3	<b>1'56.213</b>	4.674	0.132	5	140,700	<b>180,9</b>
33	79 T. ALONSO	POR	Samurai-YART Racing	Yamaha YZF-R3	<b>1'56.330</b>	4.791	0.117	5	140,559	<b>187,2</b>
34	84 J. OVERBEEKE	NED	Team Trasimeno	Yamaha YZF-R3	<b>1'56.452</b>	4.913	0.122	5	140,412	<b>180,6</b>
35	7 N. SETTIMO	ITA	Scuderia Maranga Racing	Honda CBR500R	<b>1'56.576</b>	5.037	0.124	5	140,262	<b>186,5</b>
36	58 T. FINOCCHIARO	GBR	Scuderia Maranga Racing	Honda CBR500R	<b>1'56.822</b>	5.283	0.246	5	139,967	<b>184,6</b>
37	44 S. LOCHOFF	RSA	Samurai-YART Racing	Yamaha YZF-R3	<b>1'57.155</b>	5.616	0.333	5	139,569	<b>186,9</b>
38	88 B. DAMEN	NED	Bibi's Racing Team	KTM RC 390 R	<b>1'57.966</b>	6.427	0.811	5	138,609	<b>184,3</b>
----- Out 107% in this Session -----										
39	78 J. FORAY	FRA	ETG Racing	Kawasaki Ninja 400				1		<b>174,8</b>
40	2 A. CARRASCO	ESP	DS Junior Team	Kawasaki Ninja 400				0		

Qualifying Lap Time (107% of 1'51.539): 1'59.348

AIR	Humidity:	66%	Temp:	13°C
TRACK	Condition:	Dry	Temp:	14°C

Records	Pole (SP2)	2018 M.Perez	1'50.165	148,420	Km/h
	Race (RC)	2017 A.Coppola	1'55.070	142,100	Km/h
	Circuit (SP2)	2018 M.Perez	1'50.165	148,420	Km/h

Start 22/04/2018 08:50 End 09:21 The results are provisional until the end of the time limit for protests and appeals and the completion of the technical checks.

These data/results cannot be reproduced, stored and/or transmitted in whole or in part by any manner of electronic, mechanical, photocopying, recording, broadcasting or otherwise now known or herein after developed without the previous express consent by the copyright owner, except for reproduction in daily press and regular printed publications on sale to the public within 60 days of the event related to those data/results and always provided that copyright symbol appears together as follows below.

© DORNA WSBK ORGANIZATION Srl 2018



Official Fuel Supplier

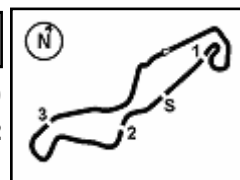


PIRELLI

Official Tyre Supplier



Official Timekeeper



## Dutch Round, 20-21-22 April 2018

### World Supersport 300 - Results Warm Up

#### Session Highlights

Local Time	No. Rider	Description
08.50.00		Start
08.51.00		RED FLAG
08.51.52	2 A. CARRASCO	Crashed - Turn 5
08.51.52	14 E. DE LA VEGA	Crashed - Turn 5
08.52.05	14 E. DE LA VEGA	Re-joined
08.52.11	2 A. CARRASCO	Medical Centre
09.10.00		Session Restart
09.12.24	8 M. PEREZ	Check Transponder
09.13.07	78 J. FORAY	Technical Problem - Turn 2
09.13.41		WorldSSP WUP Pit Lane Will Open at 9.30
09.16.31	13 D. IOZZO	Current Lap Cancelled - Exceeded Track Limits - Turn 17
09.18.17	13 D. IOZZO	Lap Cancelled (1'57.811) - Exceeded Track Limits - Turn 17
09.18.36	71 T. EDWARDS	Current Lap Cancelled - Exceeded Track Limits - Turn 17
09.18.47	71 T. EDWARDS	Lap Cancelled (1'52.272) - Exceeded Track Limits - Turn 17
09.20.05	21 B. SANCHEZ	Lap Cancelled (1'54.209) - Exceeded Track Limits - Turn 17
09.20.25	84 J. OVERBEEKE	Lap Cancelled (1'55.152) - Exceeded Track Limits - Turn 17
09.21.00		End Of Session

#### Fastest Laps Sequence

No. Rider	Nat	Team	Bike	Local Time	Time	Gap	Avg
6 R. SCHOTMAN	NED	Motoport Kawasaki	Kawasaki Ninja 400	09:13'47.018	<b>1'52.767</b>		145,000
71 T. EDWARDS	AUS	Nutec - Benjan - Kawasaki	Kawasaki Ninja 400	09:13'48.951	<b>1'52.512</b>	-0.255	145,328
17 K. MEUFFELS	NED	KTM Fortron Junior Team	KTM RC 390 R	09:15'40.022	<b>1'52.319</b>	-0.193	145,578
71 T. EDWARDS	AUS	Nutec - Benjan - Kawasaki	Kawasaki Ninja 400	09:15'41.042	<b>1'52.091</b>	-0.228	145,874
95 S. DEROUE	NED	Motoport Kawasaki	Kawasaki Ninja 400	09:17'39.754	<b>1'51.539</b>	-0.552	146,596

22/04/2018 Start 08:50 End 09:21 The results are provisional until the end of the time limit for protests and appeals and the completion of the technical checks.

These data/results cannot be reproduced, stored and/or transmitted in whole or in part by any manner of electronic, mechanical, photocopying, recording, broadcasting or otherwise now known or herein after developed without the previous express consent by the copyright owner, except for reproduction in daily press and regular printed publications on sale to the public within 60 days of the event related to those data/results and always provided that copyright symbol appears together as follows below.

© DORNA WSBK ORGANIZATION Srl 2018



Official Fuel Supplier

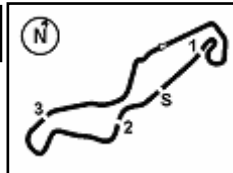


FIKR PERUGIA TIMING

Official Tyre Supplier



Official Timekeeper



## Dutch Round, 20-21-22 April 2018

### World Supersport 300 - Best Sectors & Speed Warm Up

BEST LAP		
1	95 S. DEROUE	Kawasaki Ninja 400 1'51.539
2	6 R. SCHOTMAN	Kawasaki Ninja 400 1'51.834
3	43 L. GRUNWALD	KTM RC 390 R 1'51.881
4	17 K. MEUFFELS	KTM RC 390 R 1'52.056
5	71 T. EDWARDS	Kawasaki Ninja 400 1'52.091
6	93 W. KHAN	Kawasaki Ninja 400 1'52.274
7	97 M. KAPPLER	KTM RC 390 R 1'52.377
8	55 G. HENDRA PRATAMA	Yamaha YZF-R3 1'52.397
9	14 E. DE LA VEGA	Kawasaki Ninja 400 1'52.539
10	21 B. SANCHEZ	Kawasaki Ninja 400 1'52.641
11	20 D. LOUREIRO	Kawasaki Ninja 400 1'52.665
12	16 M. LUNA BAYEN	Kawasaki Ninja 400 1'52.797
13	8 M. PEREZ	Kawasaki Ninja 400 1'52.928
14	15 G. VAN STRAALLEN	KTM RC 390 R 1'52.994
15	22 M. KALININ	Kawasaki Ninja 400 1'53.048
16	81 M. GONZALEZ	Yamaha YZF-R3 1'53.076
17	41 J. JÄHNIG	KTM RC 390 R 1'53.264
18	69 M. HERRERA	Yamaha YZF-R3 1'53.314
19	99 P. GRASSIA	Yamaha YZF-R3 1'53.389
20	12 A. RUSMIPUTRO	Yamaha YZF-R3 1'53.427
21	33 D. VALLE	Yamaha YZF-R3 1'53.825
22	5 R. VOS	KTM RC 390 R 1'54.024
23	18 A. MURLEY	Yamaha YZF-R3 1'54.174
24	28 D. KOOPMAN	Yamaha YZF-R3 1'54.314
25	27 F. ROVELLI	Kawasaki Ninja 400 1'54.408
26	64 H. DE CANCELLIS	Yamaha YZF-R3 1'54.465
27	96 I. PRATNA	Yamaha YZF-R3 1'55.335
28	54 F. FULIGNI	Yamaha YZF-R3 1'55.428
29	19 L. BERNARDI	Yamaha YZF-R3 1'55.588
30	4 M. MERCKELBAGH	Yamaha YZF-R3 1'55.841
31	13 D. IOZZO	Honda CBR500R 1'56.081
32	30 D. BLIN	Yamaha YZF-R3 1'56.213
33	79 T. ALONSO	Yamaha YZF-R3 1'56.330
34	84 J. OVERBEEKE	Yamaha YZF-R3 1'56.452
35	7 N. SETTIMO	Honda CBR500R 1'56.576
36	58 T. FINOCCHIARO	Honda CBR500R 1'56.822
37	44 S. LOCHOFF	Yamaha YZF-R3 1'57.155
38	88 B. DAMEN	KTM RC 390 R 1'57.966
39	78 J. FORAY	Kawasaki Ninja 400
40	2 A. CARRASCO	Kawasaki Ninja 400

SPEED		
1	81 M. GONZALEZ	Yamaha YZF-R3 191,5
2	71 T. EDWARDS	Kawasaki Ninja 400 190,5
3	12 A. RUSMIPUTRO	Yamaha YZF-R3 189,8
4	17 K. MEUFFELS	KTM RC 390 R 189,8
5	16 M. LUNA BAYEN	Kawasaki Ninja 400 189,5
6	69 M. HERRERA	Yamaha YZF-R3 189,5
7	97 M. KAPPLER	KTM RC 390 R 188,8
8	43 L. GRUNWALD	KTM RC 390 R 188,8
9	20 D. LOUREIRO	Kawasaki Ninja 400 188,2
10	22 M. KALININ	Kawasaki Ninja 400 187,8
11	28 D. KOOPMAN	Yamaha YZF-R3 187,8
12	55 G. HENDRA PRATAMA	Yamaha YZF-R3 187,5
13	41 J. JÄHNIG	KTM RC 390 R 187,2
14	79 T. ALONSO	Yamaha YZF-R3 187,2
15	44 S. LOCHOFF	Yamaha YZF-R3 186,9
16	15 G. VAN STRAALLEN	KTM RC 390 R 186,5
17	7 N. SETTIMO	Honda CBR500R 186,5
18	5 R. VOS	KTM RC 390 R 186,5
19	27 F. ROVELLI	Kawasaki Ninja 400 186,5
20	21 B. SANCHEZ	Kawasaki Ninja 400 185,9
21	93 W. KHAN	Kawasaki Ninja 400 185,9
22	95 S. DEROUE	Kawasaki Ninja 400 185,6
23	14 E. DE LA VEGA	Kawasaki Ninja 400 185,6
24	13 D. IOZZO	Honda CBR500R 185,2
25	6 R. SCHOTMAN	Kawasaki Ninja 400 184,9
26	58 T. FINOCCHIARO	Honda CBR500R 184,6
27	88 B. DAMEN	KTM RC 390 R 184,3
28	96 I. PRATNA	Yamaha YZF-R3 183,7
29	33 D. VALLE	Yamaha YZF-R3 183,4
30	54 F. FULIGNI	Yamaha YZF-R3 182,7
31	19 L. BERNARDI	Yamaha YZF-R3 181,5
32	4 M. MERCKELBAGH	Yamaha YZF-R3 181,2
33	99 P. GRASSIA	Yamaha YZF-R3 180,9
34	30 D. BLIN	Yamaha YZF-R3 180,9
35	84 J. OVERBEEKE	Yamaha YZF-R3 180,6
36	64 H. DE CANCELLIS	Yamaha YZF-R3 179,7
37	18 A. MURLEY	Yamaha YZF-R3 176,8
38	78 J. FORAY	Kawasaki Ninja 400 174,8

SEG. 1			SEG. 2			SEG. 3			SEG. 4		
1	6 R. SCHOTMAN	36.138	1	43 L. GRUNWALD	18.042	1	17 K. MEUFFELS	30.511	1	95 S. DEROUE	26.059
2	71 T. EDWARDS	36.343	2	71 T. EDWARDS	18.076	2	95 S. DEROUE	30.721	2	17 K. MEUFFELS	26.228
3	95 S. DEROUE	36.345	3	17 K. MEUFFELS	18.137	3	6 R. SCHOTMAN	30.733	3	43 L. GRUNWALD	26.236
4	17 K. MEUFFELS	36.487	4	97 M. KAPPLER	18.204	4	55 G. HENDRA PRATAMA	30.735	4	41 J. JÄHNIG	26.278
5	55 G. HENDRA PRATAMA	36.500	5	41 J. JÄHNIG	18.207	5	71 T. EDWARDS	30.744	5	71 T. EDWARDS	26.291
6	20 D. LOUREIRO	36.529	6	5 R. VOS	18.220	6	99 P. GRASSIA	30.807	6	93 W. KHAN	26.375
7	69 M. HERRERA	36.597	7	21 B. SANCHEZ	18.233	7	15 G. VAN STRAALLEN	30.832	7	6 R. SCHOTMAN	26.427
8	93 W. KHAN	36.599	8	15 G. VAN STRAALLEN	18.237	8	93 W. KHAN	30.871	8	16 M. LUNA BAYEN	26.452
9	97 M. KAPPLER	36.606	9	14 E. DE LA VEGA	18.247	9	12 A. RUSMIPUTRO	30.886	9	15 G. VAN STRAALLEN	26.468
10	14 E. DE LA VEGA	36.682	10	20 D. LOUREIRO	18.266	10	14 E. DE LA VEGA	30.893	10	97 M. KAPPLER	26.484
11	43 L. GRUNWALD	36.690	11	16 M. LUNA BAYEN	18.280	11	43 L. GRUNWALD	30.913	11	21 B. SANCHEZ	26.486
12	64 H. DE CANCELLIS	36.708	12	81 M. GONZALEZ	18.299	12	69 M. HERRERA	30.933	12	81 M. GONZALEZ	26.512
13	21 B. SANCHEZ	36.717	13	55 G. HENDRA PRATAMA	18.312	13	97 M. KAPPLER	30.948	13	14 E. DE LA VEGA	26.553
14	16 M. LUNA BAYEN	36.782	14	22 M. KALININ	18.321	14	22 M. KALININ	30.984	14	22 M. KALININ	26.565
15	12 A. RUSMIPUTRO	36.828	15	12 A. RUSMIPUTRO	18.332	15	5 R. VOS	31.058	15	55 G. HENDRA PRATAMA	26.588
16	99 P. GRASSIA	36.832	16	93 W. KHAN	18.340	16	18 A. MURLEY	31.087	16	69 M. HERRERA	26.670
17	81 M. GONZALEZ	36.873	17	27 F. ROVELLI	18.409	17	20 D. LOUREIRO	31.089	17	27 F. ROVELLI	26.696
18	15 G. VAN STRAALLEN	36.938	18	95 S. DEROUE	18.414	18	21 B. SANCHEZ	31.099	18	5 R. VOS	26.749
19	18 A. MURLEY	37.001	19	33 D. VALLE	18.468	19	81 M. GONZALEZ	31.119	19	33 D. VALLE	26.769
20	41 J. JÄHNIG	37.033	20	6 R. SCHOTMAN	18.472	20	33 D. VALLE	31.203	20	28 D. KOOPMAN	26.770
21	22 M. KALININ	37.050	21	69 M. HERRERA	18.475	21	41 J. JÄHNIG	31.208	21	20 D. LOUREIRO	26.781
22	33 D. VALLE	37.085	22	99 P. GRASSIA	18.511	22	16 M. LUNA BAYEN	31.243	22	12 A. RUSMIPUTRO	26.825
23	27 F. ROVELLI	37.092	23	96 I. PRATNA	18.652	23	28 D. KOOPMAN	31.403	23	99 P. GRASSIA	26.945
24	5 R. VOS	37.150	24	88 B. DAMEN	18.689	24	64 H. DE CANCELLIS	31.422	24	19 L. BERNARDI	27.008
25	84 J. OVERBEEKE	37.375	25	7 N. SETTIMO	18.701	25	27 F. ROVELLI	31.487	25	64 H. DE CANCELLIS	27.067
26	28 D. KOOPMAN	37.416	26	28 D. KOOPMAN	18.725	26	19 L. BERNARDI	31.558	26	18 A. MURLEY	27.113
27	4 M. MERCKELBAGH	37.429	27	54 F. FULIGNI	18.738	27	96 I. PRATNA	31.576	27	4 M. MERCKELBAGH	27.173
28	19 L. BERNARDI	37.436	28	58 T. FINOCCHIARO	18.787	28	84 J. OVERBEEKE	31.579	28	30 D. BLIN	27.238
29	30 D. BLIN	37.545	29	13 D. IOZZO	18.810	29	54 F. FULIGNI	31.636	29	58 T. FINOCCHIARO	27.259
30	54 F. FULIGNI	37.576	30	44 S. LOCHOFF	18.825	30	30 D. BLIN	31.638	30	96 I. PRATNA	27.273
31	96 I. PRATNA	37.716	31	79 T. ALONSO	18.848	31	13 D. IOZZO	31.698	31	84 J. OVERBEEKE	27.331
32	13 D. IOZZO	37.728	32	30 D. BLIN	18.880	32	4 M. MERCKELBAGH	31.810	32	7 N. SETTIMO	27.343
33	58 T. FINOCCHIARO	37.821	33	19 L. BERNARDI	18.905	33	79 T. ALONSO	31.952	33	88 B. DAMEN	27.356
34	79 T. ALONSO	38.065	34	64 H. DE CANCELLIS	18.970	34	44 S. LOCHOFF	32.059	34	54 F. FULIGNI	27.413
35	7 N. SETTIMO	38.071	35	18 A. MURLEY	18.973	35	58 T. FINOCCHIARO	32.138	35	79 T. ALONSO	27.465
36	44 S. LOCHOFF	38.259	36	84 J. OVERBEEKE	19.072	36	7 N. SETTIMO	32.144	36	13 D. IOZZO	27.626
37	88 B. DAMEN	38.427	37	4 M. MERCKELBAGH	19.111	37	88 B. DAMEN	32.931	37	44 S. LOCHOFF	27.649
			38	78 J. FORAY	20.163	38	78 J. FORAY	46.202	38	78 J. FORAY	31.615

22/04/2018

These data/results cannot be reproduced, stored and/or transmitted in whole or in part by any manner of electronic, mechanical, photocopying, recording, broadcasting or otherwise now known or herein after developed without the previous express consent by the copyright owner, except for reproduction in daily press and regular printed publications on sale to the public within 60 days of the event related to those data/results and always provided that copyright symbol appears together as follows below.

© DORNA WSBK ORGANIZATION Srl 2018



Official Fuel Supplier

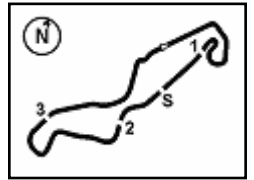


FICR PERUGIA TIMING

Official Tyre Supplier



Official Timekeeper



## Dutch Round, 20-21-22 April 2018

### World Supersport 300 - Ideal Times Warm Up

TT Circuit Assen 4.542 m  
1 / 2

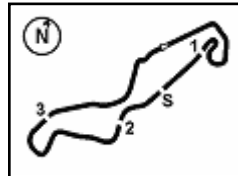
No.	Rider	Nat	Bike	Seg. 1 Diff. 1	Seg. 2 Diff. 2	Seg. 3 Diff. 3	Seg. 4 Diff. 4	Ideal Time Best Lap	Pos.	Diff.
1	17 K. MEUFFELS	NED	KTM RC 390 R	36.487 0.311	18.137 0.239	<b>30.511</b>	26.228 0.143	<b>1'51.363</b> 1'52.056	6	0.693
2	71 T. EDWARDS	AUS	Kawasaki Ninja 400	36.343 0.465	18.076 0.063	30.744 0.109	26.291	<b>1'51.454</b> 1'52.091	7	0.637
3	95 S. DEROUE	NED	Kawasaki Ninja 400	36.345	18.414	30.721	<b>26.059</b>	<b>1'51.539</b> 1'51.539	3	
4	6 R. SCHOTMAN	NED	Kawasaki Ninja 400	<b>36.138</b>	18.472 0.064	30.733	26.427	<b>1'51.770</b> 1'51.834	4	0.064
5	43 L. GRUNWALD	GER	KTM RC 390 R	36.690	<b>18.042</b>	30.913	26.236	<b>1'51.881</b> 1'51.881	5	
6	55 G. HENDRA PRATAMA	INA	Yamaha YZF-R3	36.500	18.312	30.735	26.588 0.262	<b>1'52.135</b> 1'52.397	10	0.262
7	93 W. KHAN	NED	Kawasaki Ninja 400	36.599	18.340 0.072	30.871	26.375 0.017	<b>1'52.185</b> 1'52.274	8	0.089
8	97 M. KAPPLER	GER	KTM RC 390 R	36.606	18.204	30.948	26.484 0.135	<b>1'52.242</b> 1'52.377	9	0.135
9	14 E. DE LA VEGA	FRA	Kawasaki Ninja 400	36.682 0.055	18.247	30.893 0.047	26.553 0.062	<b>1'52.375</b> 1'52.539	11	0.164
10	15 G. VAN STRAALEN	NED	KTM RC 390 R	36.938	18.237 0.257	30.832	26.468 0.262	<b>1'52.475</b> 1'52.994	16	0.519
11	21 B. SANCHEZ	ESP	Kawasaki Ninja 400	36.717	18.233 0.106	31.099	26.486	<b>1'52.535</b> 1'52.641	12	0.106
12	20 D. LOUREIRO	RSA	Kawasaki Ninja 400	36.529	18.266	31.089	26.781	<b>1'52.665</b> 1'52.665	13	
13	69 M. HERRERA	ESP	Yamaha YZF-R3	36.597 0.513	18.475 0.043	30.933 0.083	26.670	<b>1'52.675</b> 1'53.314	20	0.639
14	41 J. JÄHNIG	GER	KTM RC 390 R	37.033 0.323	18.207 0.215	31.208	26.278	<b>1'52.726</b> 1'53.264	19	0.538
15	16 M. LUNA BAYEN	ESP	Kawasaki Ninja 400	36.782	18.280 0.040	31.243	26.452	<b>1'52.757</b> 1'52.797	14	0.040
16	81 M. GONZALEZ	ESP	Yamaha YZF-R3	36.873	18.299	31.119 0.211	26.512 0.062	<b>1'52.803</b> 1'53.076	18	0.273
17	12 A. RUSMIPUTRO	INA	Yamaha YZF-R3	36.828	18.332 0.018	30.886 0.382	26.825 0.156	<b>1'52.871</b> 1'53.427	22	0.556
18	22 M. KALININ	UKR	Kawasaki Ninja 400	37.050 0.018	18.321	30.984	26.565 0.110	<b>1'52.920</b> 1'53.048	17	0.128
19	99 P. GRASSIA	ITA	Yamaha YZF-R3	36.832	18.511 0.294	30.807	26.945	<b>1'53.095</b> 1'53.389	21	0.294
20	5 R. VOS	NED	KTM RC 390 R	37.150	18.220	31.058 0.632	26.749 0.215	<b>1'53.177</b> 1'54.024	24	0.847
21	33 D. VALLE	ESP	Yamaha YZF-R3	37.085 0.112	18.468 0.105	31.203 0.083	26.769	<b>1'53.525</b> 1'53.825	23	0.300
22	27 F. ROVELLI	ITA	Kawasaki Ninja 400	37.092 0.045	18.409 0.339	31.487	26.696 0.340	<b>1'53.684</b> 1'54.408	27	0.724
23	64 H. DE CANCELLIS	FRA	Yamaha YZF-R3	36.708 0.232	18.970 0.062	31.422	27.067 0.004	<b>1'54.167</b> 1'54.465	28	0.298
24	18 A. MURLEY	GBR	Yamaha YZF-R3	37.001	18.973	31.087	27.113	<b>1'54.174</b> 1'54.174	25	
25	28 D. KOOPMAN	NED	Yamaha YZF-R3	37.416	18.725	31.403	26.770	<b>1'54.314</b> 1'54.314	26	
26	19 L. BERNARDI	ITA	Yamaha YZF-R3	37.436	18.905 0.212	31.558 0.086	27.008 0.383	<b>1'54.907</b> 1'55.588	31	0.681
27	96 I. PRATNA	INA	Yamaha YZF-R3	37.716	18.652 0.079	31.576	27.273 0.039	<b>1'55.217</b> 1'55.335	29	0.118
28	30 D. BLIN	POL	Yamaha YZF-R3	37.545 0.542	18.880	31.638 0.370	27.238	<b>1'55.301</b> 1'56.213	34	0.912
29	84 J. OVERBEEKE	NED	Yamaha YZF-R3	37.375 0.749	19.072 0.261	31.579 0.085	27.331	<b>1'55.357</b> 1'56.452	36	1.095
30	54 F. FULIGNI	ITA	Yamaha YZF-R3	37.576	18.738 0.065	31.636	27.413	<b>1'55.363</b> 1'55.428	30	0.065
31	4 M. MERCKELBAGH	NED	Yamaha YZF-R3	37.429	19.111 0.063	31.810	27.173 0.255	<b>1'55.523</b> 1'55.841	32	0.318

22/04/2018

These data/results cannot be reproduced, stored and/or transmitted in whole or in part by any manner of electronic, mechanical, photocopying, recording, broadcasting or otherwise now known or herein after developed without the previous express consent by the copyright owner, except for reproduction in daily press and regular printed publications on sale to the public within 60 days of the event related to those data/results and always provided that copyright symbol appears together as follows below.

© DORNA WSBK ORGANIZATION Srl 2018




 TT Circuit Assen 4.542 m  
**2 / 2**

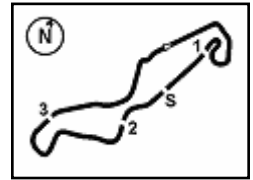
## Dutch Round, 20-21-22 April 2018

### World Supersport 300 - Ideal Times Warm Up

No.	Rider	Nat	Bike	Seg. 1	Seg. 2	Seg. 3	Seg. 4	Ideal Time			
				Diff. 1	Diff. 2	Diff. 3	Diff. 4	Best Lap	Pos.	Diff.	
32	<b>13 D. IOZZO</b>	RSA	Honda CBR500R	37.728	18.810 0.195	31.698	27.626 0.024	<b>1'55.862</b>	1'56.081	33	0.219
33	<b>58 T. FINOCCHIARO</b>	GBR	Honda CBR500R	37.821 0.371	18.787 0.077	32.138 0.369	27.259	<b>1'56.005</b>	1'56.822	38	0.817
34	<b>7 N. SETTIMO</b>	ITA	Honda CBR500R	38.071	18.701 0.225	32.144 0.020	27.343 0.072	<b>1'56.259</b>	1'56.576	37	0.317
35	<b>79 T. ALONSO</b>	POR	Yamaha YZF-R3	38.065	18.848	31.952	27.465	<b>1'56.330</b>	1'56.330	35	
36	<b>44 S. LOCHOFF</b>	RSA	Yamaha YZF-R3	38.259 0.065	18.825 0.273	32.059	27.649 0.025	<b>1'56.792</b>	1'57.155	39	0.363
37	<b>88 B. DAMEN</b>	NED	KTM RC 390 R	38.427 0.266	18.689 0.163	32.931 0.039	27.356 0.095	<b>1'57.403</b>	1'57.966	40	0.563
<b>Overall Ideal Time</b>				36.138	18.042	30.511	26.059	<b>1'50.750</b>			

22/04/2018  
 These data/results cannot be reproduced, stored and/or transmitted in whole or in part by any manner of electronic, mechanical, photocopying, recording, broadcasting or otherwise now known or herein after developed without the previous express consent by the copyright owner, except for reproduction in daily press and regular printed publications on sale to the public within 60 days of the event related to those data/results and always provided that copyright symbol appears together as follows below.  
 © DORNA WSBK ORGANIZATION Srl 2018





## Dutch Round, 20-21-22 April 2018

### World Supersport 300 - Chronological Analysis Warm Up

1° 95 S. DEROUÉ (1'51.539)								8° 55 G. HENDRA PRATAMA (1'52.397)							
Lap	Seg.1	Seg.2	Seg.3	Seg.4	Lap Time	km/h	Local Time	Lap	Seg.1	Seg.2	Seg.3	Seg.4	Lap Time	km/h	Local Time
1		19.892	35.624	41.969	C	173,6	8:52'27.995	1		20.101	35.401	49.490	C	172,0	8:52'35.925
2	18'13.546	18.862	32.762	28.838	19'34.008P	181,8	9:12'02.003	2	18'07.515	20.144	32.390	30.042	19'30.091P	183,1	9:12'06.016
3	37.342	18.676	31.504	26.383	1'53.905	<b>185,6</b>	9:13'55.908	3	37.380	18.760	31.677	26.694	1'54.511	185,2	9:14'00.527
4	36.425	18.467	30.964	26.451	1'52.307	182,7	9:15'48.215	4	36.648	18.479	30.947	26.588	1'52.662	184,0	9:15'53.189
5	<b>36.345</b>	<b>18.414</b>	<b>30.721</b>	26.059	<b>1'51.539</b>	184,6	9:17'39.754	5	<b>36.500</b>	<b>18.312</b>	<b>30.735</b>	26.850	<b>1'52.397</b>	186,9	9:17'45.586
6	36.431	18.476	30.996	26.765	1'52.668	182,7	9:19'32.422	6	37.019	18.382	32.863	27.140	1'55.404	<b>187,5</b>	9:19'40.990

2° 6 R. SCHOTMAN (1'51.834)								9° 14 E. DE LA VEGA (1'52.539)							
Lap	Seg.1	Seg.2	Seg.3	Seg.4	Lap Time	km/h	Local Time	Lap	Seg.1	Seg.2	Seg.3	Seg.4	Lap Time	km/h	Local Time
1		19.288	36.971	45.350	C	179,1	8:52'24.788	1		22.604	35.718	43.311	C	157,7	8:53'04.732
2	18'12.710	18.684	31.230	26.839	19'29.463P	181,8	9:11'54.251	2	17'36.182	18.943	33.119	30.580	18'58.824P	180,9	9:12'03.556
3	36.433	18.587	31.060	26.687	1'52.767	182,1	9:13'47.018	3	37.680	18.385	31.342	26.698	1'54.105	<b>185,6</b>	9:13'57.661
4	36.401	<b>18.472</b>	31.021	26.735	1'52.629	183,4	9:15'39.647	4	36.737	<b>18.247</b>	30.940	26.615	<b>1'52.539</b>	<b>185,6</b>	9:15'50.200
5	36.481	19.494	30.844	26.942	1'53.761	170,3	9:17'33.408	5	<b>36.682</b>	18.539	30.958	26.553	1'52.732	180,9	9:17'42.932
6	<b>36.138</b>	18.536	<b>30.733</b>	26.427	<b>1'51.834</b>	<b>184,9</b>	9:19'25.242	6	36.832	18.576	<b>30.893</b>	26.562	1'52.863	180,0	9:19'35.795

3° 43 L. GRUNWALD (1'51.881)								10° 21 B. SANCHEZ (1'52.641)							
Lap	Seg.1	Seg.2	Seg.3	Seg.4	Lap Time	km/h	Local Time	Lap	Seg.1	Seg.2	Seg.3	Seg.4	Lap Time	km/h	Local Time
1		21.824	34.840	45.471	C	167,2	8:52'50.663	1		20.076	36.322	44.349	C	179,1	8:52'26.230
2	17'49.043	18.523	31.783	27.000	19'06.349P	187,5	9:11'57.012	2	18'17.181	19.721	32.019	28.730	19'37.651P	184,3	9:12'03.881
3	37.522	18.259	31.346	26.826	1'53.953	184,6	9:13'50.965	3	38.227	18.475	32.001	26.653	1'55.356	184,6	9:13'59.237
4	37.687	18.262	31.395	26.828	1'54.172	184,9	9:15'45.137	4	<b>36.717</b>	18.339	<b>31.099</b>	26.486	<b>1'52.641</b>	184,9	9:15'51.878
5	37.169	18.505	32.685	27.161	1'55.520	182,1	9:17'40.657	5	36.786	18.435	31.138	27.077	1'53.436	184,0	9:17'45.314
6	<b>36.690</b>	<b>18.042</b>	<b>30.913</b>	26.236	<b>1'51.881</b>	<b>188,8</b>	9:19'32.538	6	37.206	<b>18.233</b>	31.230	27.540	1'54.209C	<b>185,9</b>	9:19'39.523

4° 17 K. MEUFFELS (1'52.056)								11° 20 D. LOUREIRO (1'52.665)							
Lap	Seg.1	Seg.2	Seg.3	Seg.4	Lap Time	km/h	Local Time	Lap	Seg.1	Seg.2	Seg.3	Seg.4	Lap Time	km/h	Local Time
1		22.989	36.564	40.327	C	152,1	8:53'20.548	1		20.060	39.264	54.062	C	174,5	8:52'39.286
2	17'17.898	18.574	31.309	26.335	18'34.116P	189,1	9:11'54.664	2	18'17.438	19.071	32.168	27.420	19'36.097P	178,8	9:12'15.383
3	37.418	18.582	30.575	26.464	1'53.039	183,4	9:13'47.703	3	37.266	18.506	31.503	26.893	1'54.168	183,7	9:14'09.551
4	37.121	<b>18.137</b>	30.833	26.228	1'52.319	<b>189,8</b>	9:15'40.022	4	37.100	18.534	31.455	26.953	1'54.042	183,7	9:16'03.593
5	<b>36.487</b>	18.485	30.775	26.619	1'52.366	183,1	9:17'32.388	5	<b>36.286</b>	18.620	32.198	27.229	1'55.333	<b>188,2</b>	9:17'58.926
6	36.798	18.376	<b>30.511</b>	26.371	<b>1'52.056</b>	183,4	9:19'24.444	6	<b>36.529</b>	<b>18.266</b>	<b>31.089</b>	26.781	<b>1'52.665</b>	185,9	9:19'51.591

5° 71 T. EDWARDS (1'52.091)								12° 16 M. LUNA BAYEN (1'52.797)							
Lap	Seg.1	Seg.2	Seg.3	Seg.4	Lap Time	km/h	Local Time	Lap	Seg.1	Seg.2	Seg.3	Seg.4	Lap Time	km/h	Local Time
1		19.643	38.772	49.403	C	188,2	8:52'35.197	1		19.991	38.722	44.627	C	182,7	8:52'30.418
2	18'03.547	18.737	32.217	26.741	19'21.242P	185,9	9:11'56.439	2	18'14.558	19.263	32.480	28.644	19'34.945P	185,9	9:12'05.363
3	36.537	18.200	31.197	26.578	1'52.512	185,9	9:13'48.951	3	37.842	18.528	31.916	26.552	1'54.838	<b>189,5</b>	9:14'00.201
4	36.808	18.139	30.853	26.291	<b>1'52.091</b>	186,2	9:15'41.042	4	<b>36.782</b>	18.320	<b>31.243</b>	26.452	<b>1'52.797</b>	<b>189,5</b>	9:15'52.998
5	<b>36.343</b>	18.349	<b>30.744</b>	26.836	1'52.272C	189,8	9:17'33.314	5	37.288	18.435	31.501	26.587	1'53.811	188,5	9:17'46.809
6	36.494	<b>18.076</b>	30.753	26.550	1'51.873C	<b>190,5</b>	9:19'25.187	6	36.946	<b>18.280</b>	31.330	26.661	1'53.217	187,8	9:19'40.026

6° 93 W. KHAN (1'52.274)								13° 8 M. PEREZ (1'52.928)								
Lap	Seg.1	Seg.2	Seg.3	Seg.4	Lap Time	km/h	Local Time	Lap	Seg.1	Seg.2	Seg.3	Seg.4	Lap Time	km/h	Local Time	
1		19.413	36.524	49.115	C	187,2	8:52'32.051	1								9:12'12.306
2	18'05.703	18.658	31.316	26.876	19'22.553P	183,7	9:11'54.604	2					1'55.032			9:14'07.338
3	36.815	18.550	30.998	26.739	1'53.102	183,7	9:13'47.706	3					2'05.023			9:16'12.361
4	36.871	18.526	31.014	26.397	1'52.808	184,0	9:15'40.514	4					1'53.629			9:18'05.990
5	<b>36.599</b>	18.412	<b>30.871</b>	26.392	<b>1'52.274</b>	185,6	9:17'32.788	5					<b>1'52.928</b>			9:19'58.918
6	36.670	<b>18.340</b>	30.906	26.375	1'52.291	<b>185,9</b>	9:19'25.079									

7° 97 M. KAPPLER (1'52.377)								14° 15 G. VAN STRAALLEN (1'52.994)							
Lap	Seg.1	Seg.2	Seg.3	Seg.4	Lap Time	km/h	Local Time	Lap	Seg.1	Seg.2	Seg.3	Seg.4	Lap Time	km/h	Local Time
1		19.884	39.489	52.109	C	187,8	8:52'39.041	1		22.944	36.989	39.118	C	157,9	8:53'19.146
2	18'04.422	19.844	32.389	29.261	19'25.916P	182,7	9:12'04.957	2	17'19.131	18.991	32.426	27.247	18'37.795P	183,1	9:11'56.941
3	38.091	18.638	32.592	26.913	1'56.234	186,9	9:14'01.191	3	37.414	18.586	31.253	26.468	1'53.721	178,2	9:13'50.662
4	37.023	18.577	31.295	26.741	1'53.636	183,1	9:15'54.827	4	37.761	18.753	31.767	26.918	1'55.199	180,6	9:15'45.861
5	36.622	18.445	31.347	26.484	1'52.898	<b>188,8</b>	9:17'47.725	5	37.109	<b>18.237</b>	31.275	27.229	1'53.850	<b>186,5</b>	9:17'39.711
6	<b>36.606</b>	<b>18.204</b>	<b>30.948</b>	26.619	<b>1'52.377</b>	187,8	9:19'40.102	6	<b>36.938</b>	18.494	<b>30.832</b>	26.730	<b>1'52.994</b>	179,4	9:19'32.705

22/04/2018 P = Pits In/Out - C = Lap Time Cancelled

These data/results cannot be reproduced, stored and/or transmitted in whole or in part by any manner of electronic, mechanical, photocopying, recording, broadcasting or otherwise now known or herein after developed without the previous express consent by the copyright owner, except for reproduction in daily press and regular printed publications on sale to the public within 60 days of the event related to those data/results and always provided that copyright symbol appears together as follows below.

© DORNA WSBK ORGANIZATION Srl 2018



Official Fuel Supplier

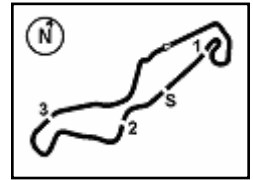


FKR PERUGIA TIMING

Official Tyre Supplier



Official Timekeeper



TT Circuit Assen 4.542 m

## Dutch Round, 20-21-22 April 2018

### World Supersport 300 - Chronological Analysis Warm Up

2 / 3

15° 22 M. KALININ (1'53.048)								22° 5 R. VOS (1'54.024)							
Lap	Seg.1	Seg.2	Seg.3	Seg.4	Lap Time	km/h	Local Time	Lap	Seg.1	Seg.2	Seg.3	Seg.4	Lap Time	km/h	Local Time
1		19.945	35.481	46.808	C	173,1	8:52'33.063	1		22.993	35.538	42.903	C	155,8	8:53'23.213
2	18'07.512	18.979	33.266	31.056	19'30.813P	183,4	9:12'03.876	2	17'17.811	18.666	33.333	27.684	18'37.494P	184,3	9:12'00.707
3	37.549	18.785	31.287	26.565	1'54.186	<b>187,8</b>	9:13'58.062	3	38.586	18.862	31.542	26.749	1'55.739	181,8	9:13'56.446
4	37.068	<b>18.321</b>	<b>30.984</b>	26.675	<b>1'53.048</b>	185,2	9:15'51.110	4	37.559	18.499	<b>31.058</b>	27.030	1'54.146	<b>186,5</b>	9:15'50.592
5	37.230	18.447	31.249	26.783	1'53.709	185,6	9:17'44.819	5	37.633	18.906	31.503	27.681	1'55.723	180,0	9:17'46.315
6	<b>37.050</b>	18.605	31.712	27.413	1'54.780	180,0	9:19'39.599	6	<b>37.150</b>	<b>18.220</b>	31.690	26.964	<b>1'54.024</b>	186,2	9:19'40.339

16° 81 M. GONZALEZ (1'53.076)								23° 18 A. MURLEY (1'54.174)							
Lap	Seg.1	Seg.2	Seg.3	Seg.4	Lap Time	km/h	Local Time	Lap	Seg.1	Seg.2	Seg.3	Seg.4	Lap Time	km/h	Local Time
1		19.797	35.595	37.439	C	184,0	8:52'19.671	1		20.574	40.164	50.830	C	170,1	8:52'42.479
2	18'21.511	18.792	32.686	31.223	19'44.212P	183,7	9:12'03.883	2	18'14.957	19.568	32.506	28.048	19'35.079P	173,9	9:12'17.558
3	37.578	18.468	31.230	26.512	1'53.788	<b>191,5</b>	9:13'57.671	3	37.878	19.420	31.885	27.795	1'56.978	173,1	9:14'14.536
4	<b>36.873</b>	<b>18.299</b>	31.330	26.574	<b>1'53.076</b>	186,5	9:15'50.747	4	37.413	19.251	31.494	27.994	1'56.152	173,4	9:16'10.688
5	37.763	18.442	31.256	27.200	1'54.661	187,8	9:17'45.408	5	37.251	19.283	31.634	27.388	1'55.556	173,6	9:18'06.244
6	37.233	18.470	<b>31.119</b>	26.740	1'53.562	187,8	9:19'38.970	6	<b>37.001</b>	<b>18.973</b>	<b>31.087</b>	27.113	<b>1'54.174</b>	<b>176,8</b>	9:20'00.418

17° 41 J. JÄHNIG (1'53.264)								24° 28 D. KOOPMAN (1'54.314)							
Lap	Seg.1	Seg.2	Seg.3	Seg.4	Lap Time	km/h	Local Time	Lap	Seg.1	Seg.2	Seg.3	Seg.4	Lap Time	km/h	Local Time
1		19.731	39.179	50.151	C	186,5	8:52'36.236	1		20.287	38.811	47.830	C	176,2	8:52'33.479
2	18'02.663	18.656	32.422	27.250	19'20.991P	185,2	9:11'57.227	2	18'12.873	19.143	32.433	28.855	19'33.304P	178,5	9:12'06.783
3	37.968	18.364	31.555	26.715	1'54.602	185,9	9:13'51.829	3	38.834	18.830	32.458	26.846	1'56.968	186,2	9:14'03.751
4	37.285	<b>18.207</b>	31.505	26.817	1'53.814	<b>187,2</b>	9:15'45.643	4	38.508	18.727	32.819	27.378	1'57.432	<b>187,8</b>	9:16'01.183
5	<b>37.033</b>	18.264	31.503	27.065	1'53.865	185,9	9:17'39.508	5	37.948	18.906	31.627	27.292	1'55.773	179,7	9:17'56.956
6	37.356	18.422	<b>31.208</b>	26.278	<b>1'53.264</b>	185,6	9:19'32.772	6	<b>37.416</b>	<b>18.725</b>	<b>31.403</b>	26.770	<b>1'54.314</b>	183,4	9:19'51.270

18° 69 M. HERRERA (1'53.314)								25° 27 F. ROVELLI (1'54.408)							
Lap	Seg.1	Seg.2	Seg.3	Seg.4	Lap Time	km/h	Local Time	Lap	Seg.1	Seg.2	Seg.3	Seg.4	Lap Time	km/h	Local Time
1		19.927	36.695	41.186	C	178,5	8:52'24.262	1		29.970	35.218	43.531	C		8:53'28.557
2	18'18.941	19.110	32.298	29.485	19'39.834P	185,2	9:12'04.096	2	17'20.431	20.366	33.377	27.924	18'42.098P	170,6	9:12'10.655
3	38.089	18.598	31.454	26.814	1'54.955	184,6	9:13'59.051	3	37.693	18.994	32.424	27.179	1'56.290	178,8	9:14'06.945
4	37.110	18.518	31.016	26.670	<b>1'53.314</b>	183,7	9:15'52.365	4	<b>37.092</b>	<b>18.409</b>	31.617	28.078	1'55.196	185,6	9:16'02.141
5	36.747	<b>18.475</b>	<b>30.933</b>	27.869	1'54.024	183,4	9:17'46.389	5	37.654	18.623	31.900	26.696	1'54.873	<b>186,5</b>	9:17'57.014
6	<b>36.597</b>	18.477	31.783	27.363	1'54.220	<b>189,5</b>	9:19'40.609	6	37.137	18.748	<b>31.487</b>	27.036	<b>1'54.408</b>	182,1	9:19'51.422

19° 99 P. GRASSIA (1'53.389)								26° 64 H. DE CANCELLIS (1'54.465)							
Lap	Seg.1	Seg.2	Seg.3	Seg.4	Lap Time	km/h	Local Time	Lap	Seg.1	Seg.2	Seg.3	Seg.4	Lap Time	km/h	Local Time
1		20.168	35.646	49.075	C	173,6	8:52'36.146	1		19.945	37.596	42.447	C	177,6	8:52'24.267
2	18'09.539	21.447	37.638	27.812	19'36.436P	154,3	9:12'12.582	2	18'16.521	19.636	32.850	29.680	19'38.687P	176,2	9:12'02.954
3	37.574	18.787	31.370	27.025	1'54.756	177,3	9:14'07.338	3	37.826	19.664	31.707	27.347	1'56.544	175,0	9:13'59.498
4	37.117	<b>18.511</b>	31.352	31.753	1'58.733	<b>180,9</b>	9:16'06.071	4	36.954	19.003	31.531	27.067	1'54.555	179,4	9:15'54.053
5	<b>36.832</b>	18.805	<b>30.807</b>	26.945	<b>1'53.389</b>	177,9	9:17'59.460	5	36.940	19.032	<b>31.422</b>	27.071	<b>1'54.465</b>	<b>179,7</b>	9:17'48.518
6	37.579	18.826	31.270	27.576	1'55.251	179,7	9:19'54.711	6	<b>36.708</b>	<b>18.970</b>	31.842	27.543	1'55.063	177,9	9:19'43.581

20° 12 A. RUSMIPUTRO (1'53.427)								27° 96 I. PRATNA (1'55.335)							
Lap	Seg.1	Seg.2	Seg.3	Seg.4	Lap Time	km/h	Local Time	Lap	Seg.1	Seg.2	Seg.3	Seg.4	Lap Time	km/h	Local Time
1		19.791	38.350	43.046	C	182,4	8:52'24.981	1		19.533	38.227	45.332	C	177,6	8:52'29.081
2	18'18.075	19.676	32.154	28.676	19'38.581P	184,0	9:12'03.562	2	18'13.807	19.327	32.346	29.961	19'35.441P	<b>183,7</b>	9:12'04.522
3	37.786	18.521	31.685	26.825	1'54.817	<b>189,8</b>	9:13'58.379	3	38.247	<b>18.652</b>	32.997	27.273	1'57.169	181,2	9:14'01.691
4	<b>36.828</b>	18.350	31.268	26.981	<b>1'53.427</b>	188,2	9:15'51.806	4	39.242	19.049	31.664	27.285	1'57.240	181,2	9:15'58.931
5	37.654	<b>18.332</b>	<b>30.886</b>	27.043	1'53.915	185,9	9:17'45.721	5	<b>37.716</b>	18.731	<b>31.576</b>	27.312	<b>1'55.335</b>	178,8	9:17'54.266
6	37.046	18.536	31.601	27.178	1'54.361	185,2	9:19'40.082	6	38.160	18.798	31.586	27.303	1'55.847	178,2	9:19'50.113

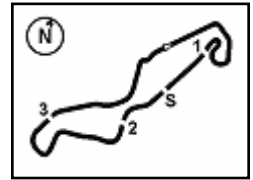
21° 33 D. VALLE (1'53.825)								28° 54 F. FULIGNI (1'55.428)							
Lap	Seg.1	Seg.2	Seg.3	Seg.4	Lap Time	km/h	Local Time	Lap	Seg.1	Seg.2	Seg.3	Seg.4	Lap Time	km/h	Local Time
1		19.641	38.346	39.825	C	175,9	8:52'21.102	1		19.677	36.064	42.941	C	186,5	8:52'22.797
2	18'21.212	18.747	32.269	29.342	19'41.570P	181,5	9:12'02.672	2	18'21.550	19.419	32.692	29.274	19'42.935P	<b>182,7</b>	9:12'05.732
3	37.197	18.573	31.286	26.769	<b>1'53.825</b>	181,5	9:13'56.497	3	38.212	<b>18.738</b>	32.109	27.417	1'56.476	181,8	9:14'02.208
4	<b>37.085</b>	18.548	<b>31.203</b>	27.262	1'54.098	<b>183,4</b>	9:15'50.595	4	37.875	18.993	31.973	27.636	1'56.477	177,0	9:15'58.685
5	37.287	18.746	31.459	26.823	1'54.315	179,7	9:17'44.910	5	<b>37.576</b>	18.803	<b>31.636</b>	27.413	<b>1'55.428</b>	178,5	9:17'54.113
6	37.354	<b>18.468</b>	31.783	27.127	1'54.732	181,2	9:19'39.642	6	37.632	19.029	31.871	27.775	1'56.307	174,8	9:19'50.420

22/04/2018 P = Pits In/Out - C = Lap Time Cancelled

These data/results cannot be reproduced, stored and/or transmitted in whole or in part by any manner of electronic, mechanical, photocopying, recording, broadcasting or otherwise now known or herein after developed without the previous express consent by the copyright owner, except for reproduction in daily press and regular printed publications on sale to the public within 60 days of the event related to those data/results and always provided that copyright symbol appears together as follows below.

© DORNA WSBK ORGANIZATION Srl 2018





TT Circuit Assen 4.542 m

## Dutch Round, 20-21-22 April 2018

### World Supersport 300 - Chronological Analysis Warm Up

3 / 3

29° 19 L. BERNARDI (1'55.588)								36° 58 T. FINOCCHIARO (1'56.822)							
Lap	Seg.1	Seg.2	Seg.3	Seg.4	Lap Time	km/h	Local Time	Lap	Seg.1	Seg.2	Seg.3	Seg.4	Lap Time	km/h	Local Time
1		20.134	38.245	45.138	C	176.5	8:52'28.443	1	18'10.816	19.957	33.216	29.636	19'33.625P	181,5	9:12'05.536
2	18'15.588	20.046	32.594	29.564	19'37.792P	179,4	9:12'06.235	3	39.041	19.000	<b>32.138</b>	27.505	1'57.684	<b>184,6</b>	9:14'03.220
3	38.621	18.939	31.704	27.008	1'56.272	<b>181,5</b>	9:14'02.507	4	<b>37.821</b>	19.105	33.129	27.650	1'57.705	182,7	9:16'00.925
4	37.933	19.116	<b>31.558</b>	27.287	1'55.894	176,5	9:15'58.401	5	39.380	<b>18.787</b>	32.527	27.766	1'58.460	182,4	9:17'59.385
5	<b>37.436</b>	19.117	31.644	27.391	<b>1'55.588</b>	175,3	9:17'53.989	6	38.192	18.864	32.507	27.259	<b>1'56.822</b>	183,4	9:19'56.207
6	38.050	<b>18.905</b>	31.729	27.442	1'56.126	178,8	9:19'50.115								

30° 4 M. MERCKELBAGH (1'55.841)								37° 44 S. LOCHOFF (1'57.155)							
Lap	Seg.1	Seg.2	Seg.3	Seg.4	Lap Time	km/h	Local Time	Lap	Seg.1	Seg.2	Seg.3	Seg.4	Lap Time	km/h	Local Time
1		20.446	37.270	45.013	C	168,2	8:52'22.508	1	17'59.230	20.273	33.098	29.535	19'22.136P	182,4	9:12'05.927
2	18'16.237	19.118	32.635	27.528	19'35.518P	<b>181,2</b>	9:11'58.026	3	39.142	19.170	32.549	27.747	1'58.608	185,6	9:14'04.535
3	37.894	<b>19.111</b>	32.330	28.054	1'57.389	175,3	9:13'55.415	4	38.714	18.951	32.249	28.198	1'58.112	181,8	9:16'02.647
4	37.759	19.158	31.959	27.173	1'56.049	172,8	9:15'51.464	5	38.324	19.098	<b>32.059</b>	27.674	<b>1'57.155</b>	<b>186,9</b>	9:17'59.802
5	37.604	19.420	32.936	27.306	1'57.266	180,9	9:17'48.730	6	<b>38.259</b>	<b>18.825</b>	32.483	27.649	1'57.216	185,9	9:19'57.018
6	<b>37.429</b>	19.174	<b>31.810</b>	27.428	<b>1'55.841</b>	177,9	9:19'44.571								

31° 13 D. IOZZO (1'56.081)								38° 88 B. DAMEN (1'57.966)							
Lap	Seg.1	Seg.2	Seg.3	Seg.4	Lap Time	km/h	Local Time	Lap	Seg.1	Seg.2	Seg.3	Seg.4	Lap Time	km/h	Local Time
1		20.366	38.628	45.383	C	175,3	8:52'27.562	1	18'14.289	19.159	34.255	28.958	19'36.661P	181,8	9:12'02.689
2	18'17.427	19.657	33.185	28.727	19'38.996P	180,9	9:12'06.558	3	39.751	<b>18.689</b>	33.108	27.356	1'58.904	<b>184,3</b>	9:14'01.593
3	38.849	18.841	32.378	27.626	1'57.694	<b>185,2</b>	9:14'04.252	4	38.885	19.500	<b>32.931</b>	27.828	1'59.144	170,1	9:16'00.737
4	38.618	<b>18.810</b>	32.186	28.197	1'57.811C	182,7	9:16'02.063	5	38.693	18.852	32.970	27.451	<b>1'57.966</b>	184,0	9:17'58.703
5	38.522	18.738	32.488	27.278	1'57.026C	184,3	9:17'59.089	6	<b>38.427</b>	19.047	33.126	27.397	1'57.997	179,1	9:19'56.700
6	<b>37.728</b>	19.005	<b>31.698</b>	27.650	<b>1'56.081</b>	178,2	9:19'55.170								

32° 30 D. BLIN (1'56.213)								39° 78 J. FORAY							
Lap	Seg.1	Seg.2	Seg.3	Seg.4	Lap Time	km/h	Local Time	Lap	Seg.1	Seg.2	Seg.3	Seg.4	Lap Time	km/h	Local Time
1		21.628	37.202	50.468	C	162,4	8:52'41.327	1	18'16.948	20.163	46.202	31.615	19'54.928P	<b>174,8</b>	9:12'24.151
2	17'55.968	19.973	32.582	27.881	19'16.404P	167,2	9:11'57.731								
3	38.109	19.364	32.257	28.224	1'57.954	172,8	9:13'55.685								
4	38.113	19.024	31.931	27.393	1'56.461	178,5	9:15'52.146								
5	38.087	<b>18.880</b>	32.008	27.238	<b>1'56.213</b>	<b>180,9</b>	9:17'48.359								
6	<b>37.545</b>	19.313	<b>31.638</b>	28.035	1'56.531	174,2	9:19'44.890								

33° 79 T. ALONSO (1'56.330)							
Lap	Seg.1	Seg.2	Seg.3	Seg.4	Lap Time	km/h	Local Time
1		20.165	38.257	46.183	C	171,4	8:52'25.211
2	18'17.405	19.585	33.111	29.672	19'39.773P	180,6	9:12'04.984
3	39.396	18.924	32.169	27.636	1'58.125	182,7	9:14'03.109
4	38.397	19.132	32.803	28.561	1'58.893	184,6	9:16'02.002
5	38.798	18.992	32.154	27.797	1'57.741	183,4	9:17'59.743
6	<b>38.065</b>	<b>18.848</b>	<b>31.952</b>	27.465	<b>1'56.330</b>	<b>187,2</b>	9:19'56.073

34° 84 J. OVERBEEKE (1'56.452)							
Lap	Seg.1	Seg.2	Seg.3	Seg.4	Lap Time	km/h	Local Time
1		20.478	37.054	51.654	C	171,7	8:52'40.662
2	18'01.553	19.641	32.648	29.773	19'23.615P	173,1	9:12'04.277
3	38.684	19.178	32.377	27.477	1'57.716	<b>180,6</b>	9:14'01.993
4	38.476	19.240	32.803	28.311	1'58.830	173,1	9:16'00.823
5	38.124	19.333	31.664	27.331	<b>1'56.452</b>	172,8	9:17'57.275
6	<b>37.375</b>	<b>19.072</b>	<b>31.579</b>	27.126	1'55.152C	175,0	9:19'52.427

35° 7 N. SETTIMO (1'56.576)							
Lap	Seg.1	Seg.2	Seg.3	Seg.4	Lap Time	km/h	Local Time
1		19.869	39.417	47.350	C	183,4	8:52'30.537
2	18'13.799	19.917	33.061	29.169	19'35.946P	181,5	9:12'06.483
3	38.696	18.905	<b>32.144</b>	27.343	1'57.088	<b>186,5</b>	9:14'03.571
4	38.456	<b>18.701</b>	32.838	27.503	1'57.498	184,3	9:16'01.069
5	38.823	18.740	32.866	27.810	1'58.239	184,9	9:17'59.308
6	<b>38.071</b>	18.926	32.164	27.415	<b>1'56.576</b>	183,1	9:19'55.884

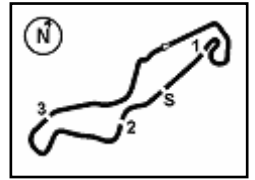
22/04/2018 P = Pits In/Out - C = Lap Time Cancelled

These data/results cannot be reproduced, stored and/or transmitted in whole or in part by any manner of electronic, mechanical, photocopying, recording, broadcasting or otherwise now known or herein after developed without the previous express consent by the copyright owner, except for reproduction in daily press and regular printed publications on sale to the public within 60 days of the event related to those data/results and always provided that copyright symbol appears together as follows below.

© DORNA WSBK ORGANIZATION Srl 2018



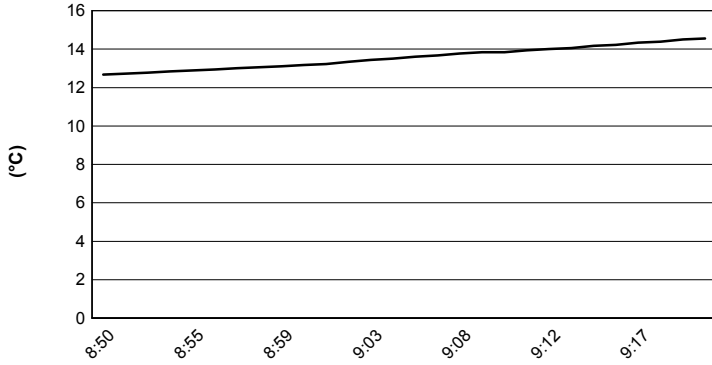




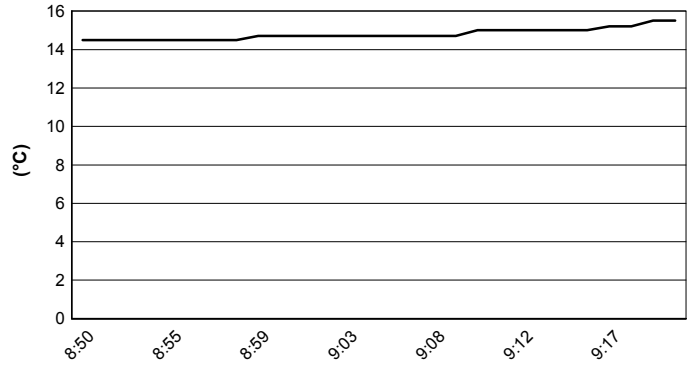
TT Circuit Assen 4.542 m

**Dutch Round, 20-21-22 April 2018**  
**World Supersport 300 - Weather Report Warm Up**  
 Session started 08:50 - Session ended 9:21

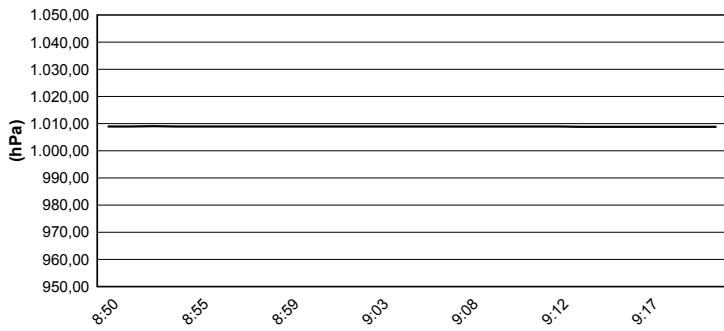
### Air Temperature



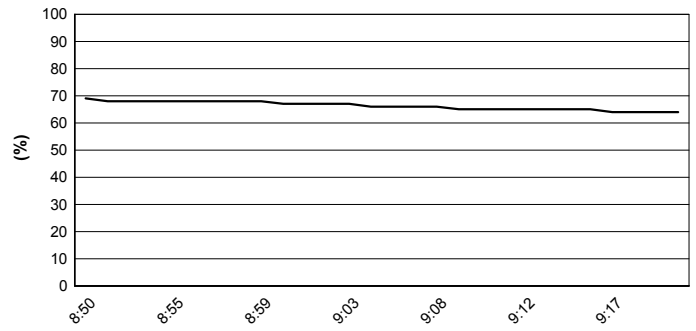
### Track Temperature



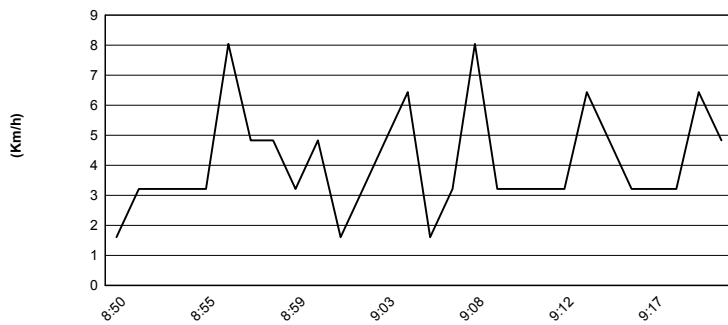
### Air Pressure



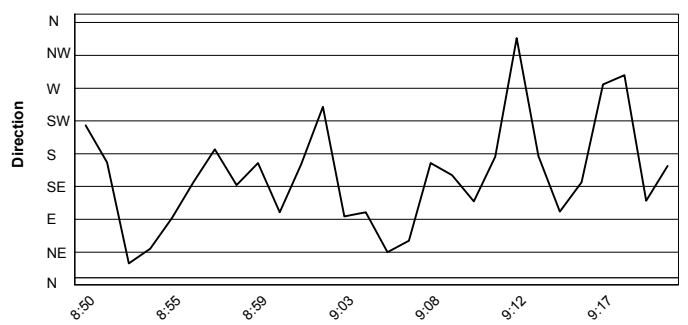
### Humidity



### Wind Speed



### Wind Direction



22/04/2018

These data/results cannot be reproduced, stored and/or transmitted in whole or in part by any manner of electronic, mechanical, photocopying, recording, broadcasting or otherwise now known or herein after developed without the previous express consent by the copyright owner, except for reproduction in daily press and regular printed publications on sale to the public within 60 days of the event related to those data/results and always provided that copyright symbol appears together as follows below.

© DORNA WSBK ORGANIZATION Srl 2018



Official Fuel Supplier

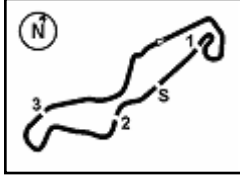


FICR PERUGIA TIMING

Official Tyre Supplier



Official Timekeeper



## Dutch Round, 20-21-22 April 2018

### World Supersport 300 - Starting Grid

12 Laps x 4,542 km = 54,504 km

TT Circuit Assen 4.542 m

1	8 PEREZ M. Kawasaki 1'50.165 SP2	2	17 MEUFFELS K. KTM 1'50.201 SP2	3	2 CARRASCO A. Kawasaki 1'50.351 SP2
2	15 VAN STRAALEN G. KTM 1'50.464 SP2	5	20 LOUREIRO D. Kawasaki 1'50.680 SP2	6	43 GRUNWALD L. KTM 1'51.974 SP2
3	22 KALININ M. Kawasaki 1'52.609 SP2	8*	6 SCHOTMAN R. Kawasaki 1'50.539 SP2	9	69 HERRERA M. Yamaha 1'52.789 SP2
4	95 DEROUÉ S. Kawasaki 1'50.840 SP2	11*	21 SANCHEZ B. Kawasaki 1'50.900 SP2	12	33 VALLE D. Yamaha 1'51.740 SP1
5	55 HENDRA PRATAMA G. Yamaha 1'52.184 SP2	14	93 KHAN W. Kawasaki 1'51.906 SP1	15	71 EDWARDS T. Kawasaki 1'52.123 SP1
6	81 GONZALEZ M. Yamaha 1'52.212 SP1	17	14 DE LA VEGA E. Kawasaki 1'52.291 SP1	18	97 KAPPLER M. KTM 1'52.335 SP1
7	54 FULIGNI F. Yamaha 1'52.419 SP1	20	41 JÄHNIG J. KTM 1'52.543 SP1	21	16 LUNA BAYEN M. Kawasaki 1'52.955 SP1
8	99 GRASSIA P. Yamaha 1'53.068 SP1	23	5 VOS R. KTM 1'53.252 SP1	24	19 BERNARDI L. Yamaha 1'53.393 SP1
9	28 KOOPMAN D. Yamaha 1'53.454 SP1	26	12 RUSMIPUTRO A. Yamaha 1'53.480 SP1	27	27 ROVELLI F. Kawasaki 1'53.902 SP1
10	18 MURLEY A. Yamaha 1'54.093 SP1	29	84 OVERBEEKE J. Yamaha 1'54.116 SP1	30	96 PRATNA I. Yamaha 1'54.158 SP1
11	13 IOZZO D. Honda 1'54.235 SP1	32	64 DE CANCELLIS H. Yamaha 1'54.323 SP1	33	7 SETTIMO N. Honda 1'54.471 SP1
12	30 BLIN D. Yamaha 1'54.537 SP1	35	58 FINOCCHIARO T. Honda 1'54.597 SP1	36	44 LOCHOFF S. Yamaha 1'54.870 SP1
13	79 ALONSO T. Yamaha 1'54.878 SP1	38	78 FORAY J. Kawasaki 1'55.285 SP1	39	4 MERCKELBAGH M. Yamaha 1'56.100 SP1
14	88 DAMEN B. KTM 1'58.893 SP0				

N.6 (Schotman R.), N.21 (Sanchez B.), N.55 (Hendra Pratama G.), N.95 (Deroue S.) have been demoted by 3 grid positions according to Art. 1.21.2  
N. 88 (Damen B.) allowed to start the race according to Art. 1.15.6

\* = Penalized

22/04/2018 Jury President .....

..... Race Director

