

Portimao 4.592 m

1 / 2

NOLAN Portuguese Round, 14 - 16 September 2018

World Superbike - Results Warm Up

No.	Rider	Nat	Team	Bike	Class	Time	Gap	Rel.	Laps	Speed	
										Avg	Max
1	1 J. REA	GBR	Kawasaki Racing Team WorldSBK	Kawasaki ZX-10RR		1'41.845			8	162,317	308,7
2	33 M. MELANDRI	ITA	Aruba.it Racing - Ducati	Ducati Panigale R		1'42.153	0.308	0.308	7	161,828	307,0
3	66 T. SYKES	GBR	Kawasaki Racing Team WorldSBK	Kawasaki ZX-10RR		1'42.204	0.359	0.051	8	161,747	306,1
4	7 C. DAVIES	GBR	Aruba.it Racing - Ducati	Ducati Panigale R		1'42.292	0.447	0.088	4	161,608	307,0
5	50 E. LAVERTY	IRL	Milwaukee Aprilia	Aprilia RSV4 RF		1'42.378	0.533	0.086	8	161,472	307,0
6	60 M. VAN DER MARK	NED	Pata Yamaha Official WorldSBK Team	Yamaha YZF R1		1'42.468	0.623	0.090	8	161,330	304,4
7	32 L. SAVADORI	ITA	Milwaukee Aprilia	Aprilia RSV4 RF		1'42.546	0.701	0.078	8	161,208	308,7
8	12 X. FORES	ESP	Barni Racing Team	Ducati Panigale R	IND	1'42.641	0.796	0.095	6	161,058	306,1
9	76 L. BAZ	FRA	GULF ALTHEA BMW Racing Team	BMW S 1000 RR		1'42.871	1.026	0.230	8	160,698	303,5
10	2 L. CAMIER	GBR	Red Bull Honda World Superbike Team	Honda CBR1000RR		1'42.928	1.083	0.057	7	160,609	307,0
11	81 J. TORRES	ESP	MV Agusta Reparto Corse	MV Agusta 1000 F4		1'42.933	1.088	0.005	8	160,602	304,4
12	22 A. LOWES	GBR	Pata Yamaha Official WorldSBK Team	Yamaha YZF R1		1'42.958	1.113	0.025	8	160,563	308,7
13	54 T. RAZGATLIOGLU	TUR	Kawasaki Puccetti Racing	Kawasaki ZX-10RR	IND	1'42.966	1.121	0.008	8	160,550	307,0
14	45 J. GAGNE	USA	Red Bull Honda World Superbike Team	Honda CBR1000RR		1'43.022	1.177	0.056	8	160,463	302,7
15	21 M. RINALDI	ITA	Aruba.it Racing - Junior Team	Ducati Panigale R	IND	1'43.357	1.512	0.335	4	159,943	300,2
16	99 P. JACOBSEN	USA	TripleM Honda World Superbike Team	Honda CBR1000RR	IND	1'43.463	1.618	0.106	8	159,779	301,8
17	36 L. MERCADO	ARG	Orelac Racing VerdNatura	Kawasaki ZX-10RR	IND	1'43.504	1.659	0.041	8	159,716	305,2
18	40 R. RAMOS	ESP	Team GoEleven Kawasaki	Kawasaki ZX-10RR	IND	1'43.542	1.697	0.038	8	159,657	300,2
19	68 Y. HERNANDEZ	COL	Team Pedercini Racing	Kawasaki ZX-10RR	IND	1'43.581	1.736	0.039	8	159,597	296,9
20	96 J. SMRZ	CZE	Guandalini Racing	Yamaha YZF R1	IND	1'44.590	2.745	1.009	8	158,057	292,9

AIR	Humidity:	62%	Temp:	26°C
TRACK	Condition:	Dry	Temp:	29°C

Records	Pole (SP2)	2018	E.Laverty	1'40.705	164,150	Km/h
	Race (RC1)	2018	J.Rea	1'42.304	161,590	Km/h
	Circuit (SP2)	2018	E.Laverty	1'40.705	164,150	Km/h

Start End The results are provisional until the end of the time limit for protests and appeals
16/09/2018 10:10 10:26 and the completion of the technical checks.

These data/results cannot be reproduced, stored and/or transmitted in whole or in part by any manner of electronic, mechanical, photocopying, recording, broadcasting or otherwise now known or herein after developed without the previous express consent by the copyright owner, except for reproduction in daily press and regular printed publications on sale to the public within 60 days of the event related to those data/results and always provided that copyright symbol appears together as follows below.

© DORNA WSBK ORGANIZATION Srl 2018

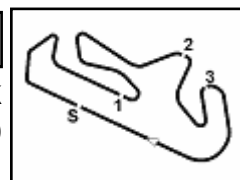
FICR PERUGIA TIMING



Official Tyre Supplier



Official Timekeeper



NOLAN Portuguese Round, 14 - 16 September 2018

World Superbike - Results Warm Up

Session Highlights

Local Time	No. Rider	Description
10.10.00		Start
10.26.34		End Of Session

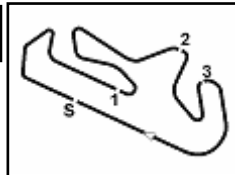
Fastest Laps Sequence

No.	Rider	Nat	Team	Bike	Local Time	Time	Gap	Avg
1	J. REA	GBR	Kawasaki Racing Team WorldSBK	Kawasaki ZX-10RR	10:13'27.696	1'42.036		162,013
1	J. REA	GBR	Kawasaki Racing Team WorldSBK	Kawasaki ZX-10RR	10:15'09.541	1'41.845	-0.191	162,317

16/09/2018 Start End The results are provisional until the end of the time limit for protests and appeals
 10:10 10:26 and the completion of the technical checks.

These data/results cannot be reproduced, stored and/or transmitted in whole or in part by any manner of electronic, mechanical, photocopying, recording, broadcasting or otherwise now known or herein after developed without the previous express consent by the copyright owner, except for reproduction in daily press and regular printed publications on sale to the public within 60 days of the event related to those data/results and always provided that copyright symbol appears together as follows below.

© DORNA WSBK ORGANIZATION Srl 2018



Portimao 4.592 m

NOLAN Portuguese Round, 14 - 16 September 2018

World Superbike - Best Sectors & Speed Warm Up

BEST LAP			
1	1 J. REA	Kawasaki ZX-10RR	1'41.845
2	33 M. MELANDRI	Ducati Panigale R	1'42.153
3	66 T. SYKES	Kawasaki ZX-10RR	1'42.204
4	7 C. DAVIES	Ducati Panigale R	1'42.292
5	50 E. LAVERTY	Aprilia RSV4 RF	1'42.378
6	60 M. VAN DER MARK	Yamaha YZF R1	1'42.468
7	32 L. SAVADORI	Aprilia RSV4 RF	1'42.546
8	12 X. FORES	Ducati Panigale R	1'42.641
9	76 L. BAZ	BMW S 1000 RR	1'42.871
10	2 L. CAMIER	Honda CBR1000RR	1'42.928
11	81 J. TORRES	MV Agusta 1000 F4	1'42.933
12	22 A. LOWES	Yamaha YZF R1	1'42.958
13	54 T. RAZGATLIOGLU	Kawasaki ZX-10RR	1'42.966
14	45 J. GAGNE	Honda CBR1000RR	1'43.022
15	21 M. RINALDI	Ducati Panigale R	1'43.357
16	99 P. JACOBSEN	Honda CBR1000RR	1'43.463
17	36 L. MERCADO	Kawasaki ZX-10RR	1'43.504
18	40 R. RAMOS	Kawasaki ZX-10RR	1'43.542
19	68 Y. HERNANDEZ	Kawasaki ZX-10RR	1'43.581
20	96 J. SMRZ	Yamaha YZF R1	1'44.590

SPEED			
1	32 L. SAVADORI	Aprilia RSV4 RF	308,7
2	1 J. REA	Kawasaki ZX-10RR	308,7
3	22 A. LOWES	Yamaha YZF R1	308,7
4	54 T. RAZGATLIOGLU	Kawasaki ZX-10RR	307,0
5	50 E. LAVERTY	Aprilia RSV4 RF	307,0
6	33 M. MELANDRI	Ducati Panigale R	307,0
7	7 C. DAVIES	Ducati Panigale R	307,0
8	2 L. CAMIER	Honda CBR1000RR	307,0
9	66 T. SYKES	Kawasaki ZX-10RR	306,1
10	12 X. FORES	Ducati Panigale R	306,1
11	36 L. MERCADO	Kawasaki ZX-10RR	305,2
12	60 M. VAN DER MARK	Yamaha YZF R1	304,4
13	81 J. TORRES	MV Agusta 1000 F4	304,4
14	76 L. BAZ	BMW S 1000 RR	303,5
15	45 J. GAGNE	Honda CBR1000RR	302,7
16	99 P. JACOBSEN	Honda CBR1000RR	301,8
17	21 M. RINALDI	Ducati Panigale R	300,2
18	40 R. RAMOS	Kawasaki ZX-10RR	300,2
19	68 Y. HERNANDEZ	Kawasaki ZX-10RR	296,9
20	96 J. SMRZ	Yamaha YZF R1	292,9

SEG. 1		
1	7 C. DAVIES	32.126
2	1 J. REA	32.183
3	50 E. LAVERTY	32.234
4	33 M. MELANDRI	32.240
5	66 T. SYKES	32.279
6	12 X. FORES	32.291
7	32 L. SAVADORI	32.298
8	22 A. LOWES	32.343
9	60 M. VAN DER MARK	32.373
10	81 J. TORRES	32.432
11	2 L. CAMIER	32.442
12	76 L. BAZ	32.528
13	36 L. MERCADO	32.567
14	54 T. RAZGATLIOGLU	32.604
15	45 J. GAGNE	32.652
16	68 Y. HERNANDEZ	32.708
17	21 M. RINALDI	32.721
18	99 P. JACOBSEN	32.746
19	40 R. RAMOS	32.822
20	96 J. SMRZ	33.163

SEG. 2		
1	1 J. REA	30.407
2	66 T. SYKES	30.435
3	33 M. MELANDRI	30.470
4	50 E. LAVERTY	30.471
5	12 X. FORES	30.539
6	54 T. RAZGATLIOGLU	30.545
7	81 J. TORRES	30.552
8	32 L. SAVADORI	30.585
9	60 M. VAN DER MARK	30.600
10	2 L. CAMIER	30.614
11	76 L. BAZ	30.644
12	7 C. DAVIES	30.671
13	22 A. LOWES	30.702
14	45 J. GAGNE	30.760
15	40 R. RAMOS	30.843
16	21 M. RINALDI	30.854
17	36 L. MERCADO	30.969
18	68 Y. HERNANDEZ	31.024
19	99 P. JACOBSEN	31.037
20	96 J. SMRZ	31.205

SEG. 3		
1	1 J. REA	20.137
2	7 C. DAVIES	20.203
3	33 M. MELANDRI	20.215
4	60 M. VAN DER MARK	20.256
5	66 T. SYKES	20.264
6	32 L. SAVADORI	20.307
7	50 E. LAVERTY	20.328
8	54 T. RAZGATLIOGLU	20.370
9	45 J. GAGNE	20.378
10	81 J. TORRES	20.381
11	36 L. MERCADO	20.399
12	40 R. RAMOS	20.405
13	99 P. JACOBSEN	20.431
14	68 Y. HERNANDEZ	20.439
15	12 X. FORES	20.442
16	76 L. BAZ	20.446
17	22 A. LOWES	20.451
18	21 M. RINALDI	20.466
19	2 L. CAMIER	20.487
20	96 J. SMRZ	20.594

SEG. 4		
1	45 J. GAGNE	18.970
2	60 M. VAN DER MARK	19.010
3	99 P. JACOBSEN	19.014
4	50 E. LAVERTY	19.016
5	1 J. REA	19.028
6	76 L. BAZ	19.064
7	66 T. SYKES	19.122
8	32 L. SAVADORI	19.130
9	54 T. RAZGATLIOGLU	19.134
10	12 X. FORES	19.148
11	33 M. MELANDRI	19.154
12	22 A. LOWES	19.203
13	40 R. RAMOS	19.216
14	81 J. TORRES	19.229
15	7 C. DAVIES	19.241
16	21 M. RINALDI	19.257
17	2 L. CAMIER	19.260
18	68 Y. HERNANDEZ	19.328
19	96 J. SMRZ	19.339
20	36 L. MERCADO	19.370

16/09/2018

These data/results cannot be reproduced, stored and/or transmitted in whole or in part by any manner of electronic, mechanical, photocopying, recording, broadcasting or otherwise now known or herein after developed without the previous express consent by the copyright owner, except for reproduction in daily press and regular printed publications on sale to the public within 60 days of the event related to those data/results and always provided that copyright symbol appears together as follows below.

© DORNA WSBK ORGANIZATION Srl 2018

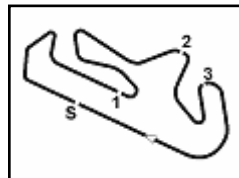
FICR PERUGIA TIMING



Official Tyre Supplier



Official Timekeeper



Portimao 4.592 m

NOLAN Portuguese Round, 14 - 16 September 2018

World Superbike - Ideal Times Warm Up

No.	Rider	Nat	Bike	Seg. 1	Seg. 2	Seg. 3	Seg. 4	Ideal Time		
				Diff. 1	Diff. 2	Diff. 3	Diff. 4	Best Lap	Pos.	Diff.
1	1 J. REA	GBR	Kawasaki ZX-10RR	32.183	30.407	20.137 0.090	19.028	1'41.755 1'41.845	1	0.090
2	50 E. LAVERTY	IRL	Aprilia RSV4 RF	32.234 0.176	30.471	20.328 0.089	19.016 0.064	1'42.049 1'42.378	5	0.329
3	33 M. MELANDRI	ITA	Ducati Panigale R	32.240	30.470	20.215	19.154 0.074	1'42.079 1'42.153	2	0.074
4	66 T. SYKES	GBR	Kawasaki ZX-10RR	32.279 0.046	30.435	20.264 0.048	19.122 0.010	1'42.100 1'42.204	3	0.104
5	60 M. VAN DER MARK	NED	Yamaha YZF R1	32.373 0.160	30.600 0.016	20.256	19.010 0.053	1'42.239 1'42.468	6	0.229
6	7 C. DAVIES	GBR	Ducati Panigale R	32.126 0.051	30.671	20.203	19.241	1'42.241 1'42.292	4	0.051
7	32 L. SAVADORI	ITA	Aprilia RSV4 RF	32.298 0.165	30.585 0.059	20.307	19.130 0.002	1'42.320 1'42.546	7	0.226
8	12 X. FORES	ESP	Ducati Panigale R	32.291	30.539	20.442 0.215	19.148 0.006	1'42.420 1'42.641	8	0.221
9	81 J. TORRES	ESP	MV Agusta 1000 F4	32.432 0.054	30.552 0.096	20.381 0.080	19.229 0.109	1'42.594 1'42.933	11	0.339
10	54 T. RAZGATLIOGLU	TUR	Kawasaki ZX-10RR	32.604 0.095	30.545	20.370 0.120	19.134 0.098	1'42.653 1'42.966	13	0.313
11	76 L. BAZ	FRA	BMW S 1000 RR	32.528	30.644	20.446 0.076	19.064 0.113	1'42.682 1'42.871	9	0.189
12	22 A. LOWES	GBR	Yamaha YZF R1	32.343 0.082	30.702 0.069	20.451	19.203 0.108	1'42.699 1'42.958	12	0.259
13	45 J. GAGNE	USA	Honda CBR1000RR	32.652 0.088	30.760	20.378 0.050	18.970 0.124	1'42.760 1'43.022	14	0.262
14	2 L. CAMIER	GBR	Honda CBR1000RR	32.442	30.614	20.487	19.260 0.125	1'42.803 1'42.928	10	0.125
15	99 P. JACOBSEN	USA	Honda CBR1000RR	32.746	31.037 0.045	20.431 0.112	19.014 0.078	1'43.228 1'43.463	16	0.235
16	40 R. RAMOS	ESP	Kawasaki ZX-10RR	32.822 0.051	30.843 0.063	20.405 0.069	19.216 0.073	1'43.286 1'43.542	18	0.256
17	21 M. RINALDI	ITA	Ducati Panigale R	32.721	30.854	20.466	19.257 0.059	1'43.298 1'43.357	15	0.059
18	36 L. MERCADO	ARG	Kawasaki ZX-10RR	32.567 0.023	30.969 0.024	20.399 0.104	19.370 0.048	1'43.305 1'43.504	17	0.199
19	68 Y. HERNANDEZ	COL	Kawasaki ZX-10RR	32.708	31.024	20.439 0.026	19.328 0.056	1'43.499 1'43.581	19	0.082
20	96 J. SMRZ	CZE	Yamaha YZF R1	33.163 0.085	31.205	20.594	19.339 0.204	1'44.301 1'44.590	20	0.289
Overall Ideal Time				32.126	30.407	20.137	18.970	1'41.640		

16/09/2018

These data/results cannot be reproduced, stored and/or transmitted in whole or in part by any manner of electronic, mechanical, photocopying, recording, broadcasting or otherwise now known or herein after developed without the previous express consent by the copyright owner, except for reproduction in daily press and regular printed publications on sale to the public within 60 days of the event related to those data/results and always provided that copyright symbol appears together as follows below.

© DORNA WSBK ORGANIZATION Srl 2018

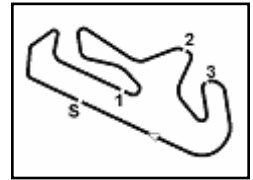
FIAT PERUGIA TIMING



Official Tyre Supplier



Official Timekeeper



NOLAN Portuguese Round, 14 - 16 September 2018

World Superbike - Chronological Analysis Warm Up

Portimao 4.592 m

1 / 2

1° 1 J. REA (1'41.845)							
Lap	Seg.1	Seg.2	Seg.3	Seg.4	Lap Time	km/h	Local Time
1		31.332	20.309	19.128			10:11'45.660
2	32.373	30.497	20.137	19.029	1'42.036	304,4	10:13'27.696
3	32.183	30.407	20.227	19.028	1'41.845	307,0	10:15'09.541
4	32.206	30.533	20.274	19.097	1'42.110	306,1	10:16'51.651
5	32.349	30.598	20.342	19.128	1'42.417	306,1	10:18'34.068
6	32.187	30.521	20.440	19.198	1'42.346	306,1	10:20'16.414
7	32.234	30.579	20.214	19.094	1'42.121	307,8	10:21'58.535
8	32.335	30.540	20.286	19.180	1'42.341	307,8	10:23'40.876
9	32.244	30.526	20.273	19.176	1'42.219	308,7	10:25'23.095

7	32.373	30.694	20.315	19.113	1'42.495	304,4	10:22'04.585
8	32.533	30.737	20.288	19.153	1'42.711	303,5	10:23'47.296
9	32.461	30.613	20.401	19.141	1'42.616	304,4	10:25'29.912

2° 33 M. MELANDRI (1'42.153)							
Lap	Seg.1	Seg.2	Seg.3	Seg.4	Lap Time	km/h	Local Time
1		32.601	21.233	19.406			10:12'00.250
2	32.753	30.926	20.337	19.154	1'43.170	300,2	10:13'43.420
3	32.341	30.727	20.263	19.157	1'42.488	304,4	10:15'25.908
4	39.247	32.629	20.763	19.346	1'51.985	307,0	10:17'17.893
5	32.514	31.526	20.793	26.435	1'51.268P	306,1	10:19'09.161
6	1'41.890	33.932	21.349	19.419	2'56.590P		10:22'05.751
7	32.505	30.607	20.470	19.394	1'42.976	307,0	10:23'48.727
8	32.240	30.470	20.215	19.228	1'42.153	307,0	10:25'30.880

7° 32 L. SAVADORI (1'42.546)							
Lap	Seg.1	Seg.2	Seg.3	Seg.4	Lap Time	km/h	Local Time
1		33.303	21.073	19.299			10:11'58.054
2	32.537	30.931	20.489	19.213	1'43.170	305,2	10:13'41.224
3	32.611	30.771	20.697	19.130	1'43.209	292,9	10:15'24.433
4	38.643	31.354	20.831	19.246	1'50.074	294,5	10:17'14.507
5	36.442	31.341	23.066	19.298	1'50.147	308,7	10:19'04.654
6	32.512	30.667	20.469	19.227	1'42.875	302,7	10:20'47.529
7	32.434	30.585	20.457	19.150	1'42.626	303,5	10:22'30.155
8	32.298	30.773	20.627	19.210	1'42.908	306,1	10:24'13.063
9	32.463	30.644	20.307	19.132	1'42.546	298,5	10:25'55.609

3° 66 T. SYKES (1'42.204)							
Lap	Seg.1	Seg.2	Seg.3	Seg.4	Lap Time	km/h	Local Time
1		32.510	21.316	19.507			10:12'47.240
2	32.769	30.822	20.448	19.333	1'43.372	296,9	10:14'30.612
3	32.710	30.817	20.420	19.185	1'43.132	301,0	10:16'13.744
4	32.461	30.663	20.353	19.209	1'42.686	305,2	10:17'56.430
5	32.515	30.572	20.338	19.122	1'42.547	302,7	10:19'38.977
6	32.343	30.510	20.264	19.200	1'42.317	306,1	10:21'21.294
7	32.827	31.872	20.742	19.587	1'45.028	305,2	10:23'06.322
8	32.279	30.640	20.364	19.179	1'42.462	306,1	10:24'48.784
9	32.325	30.435	20.312	19.132	1'42.204	302,7	10:26'30.988

8° 12 X. FORES (1'42.641)							
Lap	Seg.1	Seg.2	Seg.3	Seg.4	Lap Time	km/h	Local Time
1		31.558	20.846	19.265			10:11'48.834
2	37.553	30.911	20.442	19.207	1'48.113	284,4	10:13'36.947
3	32.489	30.603	20.453	19.148	1'42.693	306,1	10:15'19.640
4	34.799	32.685	21.962	19.358	1'48.804	289,7	10:17'08.444
5	32.291	30.539	20.657	19.154	1'42.641	302,7	10:18'51.085
6	33.781	32.367	20.904	28.446	1'55.498P	294,5	10:20'46.583
7	3'39.293	31.027	20.654	19.519	4'50.493P		10:25'37.076

4° 7 C. DAVIES (1'42.292)							
Lap	Seg.1	Seg.2	Seg.3	Seg.4	Lap Time	km/h	Local Time
1		32.653	21.575	19.533			10:13'08.706
2	32.447	30.742	20.343	19.388	1'42.920	305,2	10:14'51.626
3	32.177	30.671	20.203	19.241	1'42.292	305,2	10:16'33.918
4	32.126	30.787	20.272	19.364	1'42.549	305,2	10:18'16.467
5	35.120	34.471	22.045	28.700	2'00.336P	307,0	10:20'16.803

9° 76 L. BAZ (1'42.871)							
Lap	Seg.1	Seg.2	Seg.3	Seg.4	Lap Time	km/h	Local Time
1		31.749	20.790	19.100			10:11'48.441
2	33.131	30.835	20.458	19.095	1'43.519	295,3	10:13'31.960
3	32.923	30.746	20.450	19.179	1'43.298	298,5	10:15'15.258
4	32.797	30.860	20.454	19.064	1'43.175	301,8	10:16'58.433
5	32.702	30.697	20.572	19.106	1'43.077	299,3	10:18'41.510
6	32.858	30.730	20.446	19.268	1'43.302	299,3	10:20'24.812
7	32.755	30.909	20.521	19.283	1'43.468	303,5	10:22'08.280
8	32.677	30.839	20.562	19.168	1'43.246	301,8	10:23'51.526
9	32.528	30.644	20.522	19.177	1'42.871	298,5	10:25'34.397

5° 50 E. LAVERTY (1'42.378)							
Lap	Seg.1	Seg.2	Seg.3	Seg.4	Lap Time	km/h	Local Time
1		31.414	20.539	19.016			10:11'46.774
2	32.410	30.471	20.417	19.080	1'42.378	304,4	10:13'29.152
3	32.234	30.628	20.328	19.226	1'42.416	307,0	10:15'11.568
4	32.469	30.725	20.470	19.255	1'42.919	306,1	10:16'54.487
5	32.592	30.718	20.568	19.282	1'43.160	299,3	10:18'37.647
6	32.369	30.787	20.422	19.237	1'42.815	306,1	10:20'20.462
7	32.360	30.770	20.465	19.302	1'42.897	304,4	10:22'03.359
8	32.511	30.876	20.613	19.362	1'43.362	303,5	10:23'46.721
9	32.474	30.819	20.509	19.347	1'43.149	302,7	10:25'29.870

10° 2 L. CAMIER (1'42.928)							
Lap	Seg.1	Seg.2	Seg.3	Seg.4	Lap Time	km/h	Local Time
1		31.691	20.769	19.531			10:12'20.988
2	32.572	30.622	20.711	19.304	1'43.209	303,5	10:14'04.197
3	32.682	30.772	20.534	19.260	1'43.248	303,5	10:15'47.445
4	32.484	30.673	20.510	19.324	1'42.991	301,8	10:17'30.436
5	33.768	31.473	20.794	25.960	1'51.995P	302,7	10:19'22.431
6	2'02.998	31.002	20.636	19.559	3'14.195P		10:22'36.626
7	32.442	30.614	20.487	19.385	1'42.928	307,0	10:24'19.554
8	32.472	30.748	20.728	19.365	1'43.313	305,2	10:26'02.867

6° 60 M. VAN DER MARK (1'42.468)							
Lap	Seg.1	Seg.2	Seg.3	Seg.4	Lap Time	km/h	Local Time
1		31.399	20.776	19.243			10:11'48.337
2	32.954	30.779	20.468	19.010	1'43.211	298,5	10:13'31.548
3	32.669	30.862	20.308	19.126	1'42.965	300,2	10:15'14.513
4	32.533	30.616	20.256	19.063	1'42.468	304,4	10:16'56.981
5	32.532	30.600	20.385	19.093	1'42.610	304,4	10:18'39.591
6	32.467	30.621	20.331	19.080	1'42.499	304,4	10:20'22.090

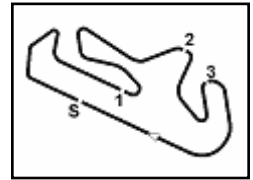
11° 81 J. TORRES (1'42.933)							
Lap	Seg.1	Seg.2	Seg.3	Seg.4	Lap Time	km/h	Local Time
1		31.411	20.718	19.522			10:11'47.763
2	33.058	30.681	20.528	19.320	1'43.587	292,9	10:13'31.350
3	32.432	41.026	20.742	19.229	1'53.429	301,8	10:15'24.779
4	32.486	30.648	20.461	19.338	1'42.933	295,3	10:17'07.712
5	32.458	30.580	20.665	19.268	1'42.971	304,4	10:18'50.683
6	32.541	30.638	20.467	19.369	1'43.015	300,2	10:20'33.698
7	32.557	30.829	23.454	19.683	1'46.523	301,0	10:22'20.221
8	32.619	30.633	20.469	19.495	1'43.216	302,7	10:24'03.437
9	32.558	30.552	20.381	19.482	1'42.973	301,8	10:25'46.410

12° 22 A. LOWES (1'42.958)							
Lap	Seg.1	Seg.2	Seg.3	Seg.4	Lap Time	km/h	Local Time
1		31.721	21.161	19.299			10:11'56.883

16/09/2018 P = Pits In/Out - C = Lap Time Cancelled

These data/results cannot be reproduced, stored and/or transmitted in whole or in part by any manner of electronic, mechanical, photocopying, recording, broadcasting or otherwise now known or herein after developed without the previous express consent by the copyright owner, except for reproduction in daily press and regular printed publications on sale to the public within 60 days of the event related to those data/results and always provided that copyright symbol appears together as follows below.

© DORNA WSBK ORGANIZATION Srl 2018



Portimao 4.592 m

2 / 2

NOLAN Portuguese Round, 14 - 16 September 2018

World Superbike - Chronological Analysis Warm Up

Lap	Seg.1	Seg.2	Seg.3	Seg.4	Lap Time	km/h	Local Time
2	33.016	31.183	20.575	19.232	1'44.006	297,7	10:13'40.889
3	32.592	30.845	20.648	19.203	1'43.288	301,8	10:15'24.177
4	32.663	30.702	20.565	19.227	1'43.157	306,1	10:17'07.334
5	32.343	30.837	20.655	19.258	1'43.093	308,7	10:18'50.427
6	32.425	30.771	20.451	19.311	1'42.958	306,1	10:20'33.385
7	42.029	32.894	20.655	19.557	1'55.135	308,7	10:22'28.520
8	32.525	30.706	20.503	19.290	1'43.024	306,1	10:24'11.544
9	32.507	30.750	20.466	19.281	1'43.004	301,0	10:25'54.548

13° 54 T. RAZGATLIOGLU (1'42.966)							
Lap	Seg.1	Seg.2	Seg.3	Seg.4	Lap Time	km/h	Local Time
1		31.395	20.738	19.397			10:11'47.873
2	33.279	30.710	20.489	19.134	1'43.612	307,0	10:13'31.485
3	32.968	30.851	20.385	19.206	1'43.410	291,3	10:15'14.895
4	32.699	30.545	20.490	19.232	1'42.966	301,8	10:16'57.861
5	32.695	30.670	20.506	19.250	1'43.121	300,2	10:18'40.982
6	32.604	30.713	20.370	19.383	1'43.070	298,5	10:20'24.052
7	32.734	30.917	20.397	19.339	1'43.387	298,5	10:22'07.439
8	32.815	30.780	20.540	19.339	1'43.474	302,7	10:23'50.913
9	32.628	30.736	20.402	19.368	1'43.134	299,3	10:25'34.007

14° 45 J. GAGNE (1'43.022)							
Lap	Seg.1	Seg.2	Seg.3	Seg.4	Lap Time	km/h	Local Time
1		31.508	20.715	18.970			10:11'49.331
2	32.833	30.830	20.378	19.009	1'43.050	291,3	10:13'32.381
3	33.271	30.820	20.448	19.008	1'43.547	301,8	10:15'15.928
4	32.844	30.770	20.488	19.113	1'43.215	292,9	10:16'59.143
5	32.740	30.760	20.428	19.094	1'43.022	302,7	10:18'42.165
6	32.652	30.837	20.392	19.197	1'43.078	299,3	10:20'25.243
7	36.616	31.663	20.955	19.672	1'48.906	300,2	10:22'14.149
8	32.822	30.867	20.502	19.246	1'43.437	301,8	10:23'57.586
9	32.661	31.205	20.417	19.326	1'43.609	298,5	10:25'41.195

15° 21 M. RINALDI (1'43.357)							
Lap	Seg.1	Seg.2	Seg.3	Seg.4	Lap Time	km/h	Local Time
1		32.939	21.598	19.615			10:12'34.397
2	37.451	34.560	24.421	28.775	2'05.207P	287,4	10:14'39.604
3	6'20.968	31.530	21.658	19.415	7'33.571P		10:22'13.175
4	32.964	31.074	20.657	19.257	1'43.952	300,2	10:23'57.127
5	32.721	30.854	20.466	19.316	1'43.357	299,3	10:25'40.484

16° 99 P. JACOBSEN (1'43.463)							
Lap	Seg.1	Seg.2	Seg.3	Seg.4	Lap Time	km/h	Local Time
1		32.007	20.922	19.303			10:11'50.398
2	32.859	31.171	20.535	19.014	1'43.579	301,8	10:13'33.977
3	32.746	31.082	20.543	19.092	1'43.463	292,9	10:15'17.440
4	32.803	31.089	20.539	19.247	1'43.678	294,5	10:17'01.118
5	32.811	31.217	20.562	19.311	1'43.901	295,3	10:18'45.019
6	36.528	36.966	21.830	19.818	1'55.142	290,5	10:20'40.161
7	33.092	32.587	23.671	19.542	1'48.892	293,7	10:22'29.053
8	32.865	31.067	20.663	19.333	1'43.928	297,7	10:24'12.981
9	33.045	31.037	20.431	19.421	1'43.934	287,4	10:25'56.915

17° 36 L. MERCADO (1'43.504)							
Lap	Seg.1	Seg.2	Seg.3	Seg.4	Lap Time	km/h	Local Time
1		34.787	26.972	19.427			10:12'00.902
2	32.884	31.068	20.399	19.370	1'43.721	296,9	10:13'44.623
3	32.602	31.014	20.733	19.401	1'43.750	295,3	10:15'28.373
4	32.590	30.993	20.503	19.418	1'43.504	302,7	10:17'11.877
5	39.694	31.224	20.704	19.445	1'51.067	300,2	10:19'02.944
6	35.023	30.969	20.448	19.454	1'45.894	299,3	10:20'48.838
7	32.668	31.077	20.588	19.419	1'43.752	305,2	10:22'32.590
8	32.567	38.998	21.398	19.721	1'52.684	298,5	10:24'25.274
9	32.643	31.521	20.788	19.513	1'44.465	297,7	10:26'09.739

18° 40 R. RAMOS (1'43.542)							
Lap	Seg.1	Seg.2	Seg.3	Seg.4	Lap Time	km/h	Local Time
1		31.258	20.801	19.452			10:11'48.336
2	33.402	31.040	20.405	19.216	1'44.063	277,8	10:13'32.399
3	33.030	31.187	20.575	19.241	1'44.033	282,9	10:15'16.432
4	34.583	31.122	20.422	19.380	1'45.507	299,3	10:17'01.939
5	32.873	30.906	20.474	19.289	1'43.542	293,7	10:18'45.481
6	33.110	33.760	22.300	19.243	1'48.413	296,9	10:20'33.894
7	32.836	30.935	23.089	19.707	1'46.567	286,7	10:22'20.461
8	32.992	30.843	20.428	19.489	1'43.752	300,2	10:24'04.213
9	32.822	31.747	20.768	19.464	1'44.801	295,3	10:25'49.014

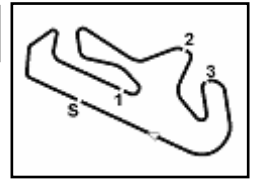
19° 68 Y. HERNANDEZ (1'43.581)							
Lap	Seg.1	Seg.2	Seg.3	Seg.4	Lap Time	km/h	Local Time
1		32.184	21.057	19.491			10:11'50.373
2	33.362	31.568	20.590	19.358	1'44.878	296,1	10:13'35.251
3	32.854	31.192	20.668	19.409	1'44.123	296,9	10:15'19.374
4	32.708	31.024	20.465	19.384	1'43.581	294,5	10:17'02.955
5	32.743	31.097	20.446	19.455	1'43.741	292,1	10:18'46.696
6	32.946	31.161	20.719	19.504	1'44.330	294,5	10:20'31.026
7	34.491	31.967	23.769	19.328	1'49.555	292,1	10:22'20.581
8	33.081	31.097	20.439	19.345	1'43.962	282,2	10:24'04.543
9	32.860	31.162	20.688	19.524	1'44.234	291,3	10:25'48.777

20° 96 J. SMRZ (1'44.590)							
Lap	Seg.1	Seg.2	Seg.3	Seg.4	Lap Time	km/h	Local Time
1		33.979	22.670	19.446			10:12'05.003
2	33.838	31.554	20.939	19.339	1'45.670	280,7	10:13'50.673
3	33.343	31.457	20.940	19.400	1'45.140	289,0	10:15'35.813
4	33.283	31.385	20.892	19.478	1'45.038	285,2	10:17'20.851
5	33.321	31.476	20.893	19.380	1'45.070	289,0	10:19'05.921
6	33.256	31.355	20.819	19.454	1'44.884	279,3	10:20'50.805
7	33.163	31.909	21.933	19.400	1'46.405	290,5	10:22'37.210
8	33.248	31.205	20.594	19.543	1'44.590	283,7	10:24'21.800
9	33.410	31.306	20.911	19.383	1'45.010	292,9	10:26'06.810

16/09/2018 P = Pits In/Out - C = Lap Time Cancelled

These data/results cannot be reproduced, stored and/or transmitted in whole or in part by any manner of electronic, mechanical, photocopying, recording, broadcasting or otherwise now known or herein after developed without the previous express consent by the copyright owner, except for reproduction in daily press and regular printed publications on sale to the public within 60 days of the event related to those data/results and always provided that copyright symbol appears together as follows below.

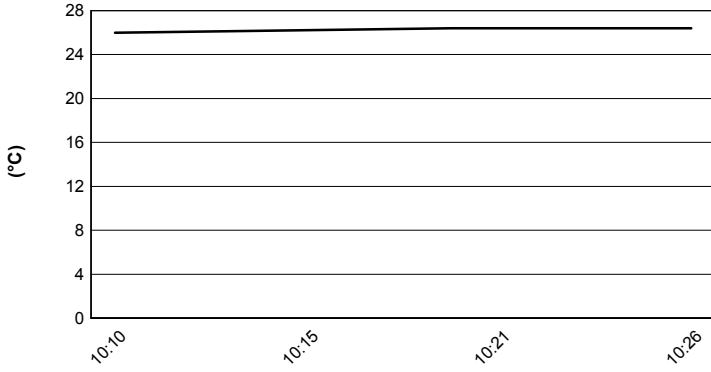
© DORNA WSBK ORGANIZATION Srl 2018



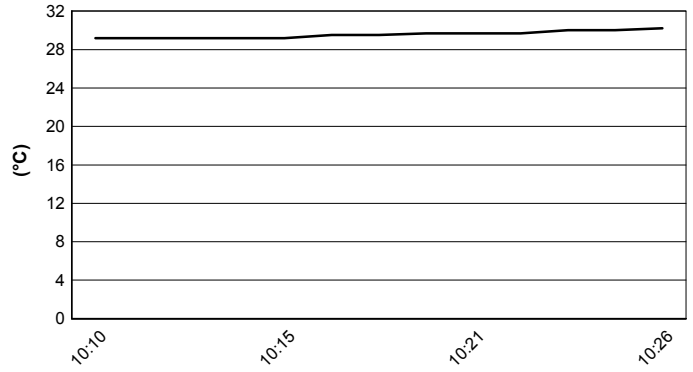
Portimao 4.592 m

NOLAN Portuguese Round, 14 - 16 September 2018
World Superbike - Weather Report Warm Up
 Session started 10:10 - Session ended 10:26

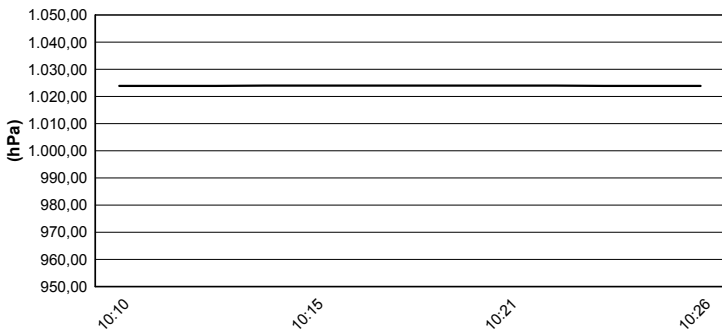
Air Temperature



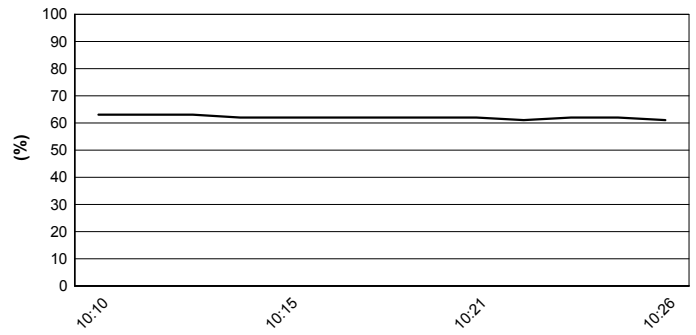
Track Temperature



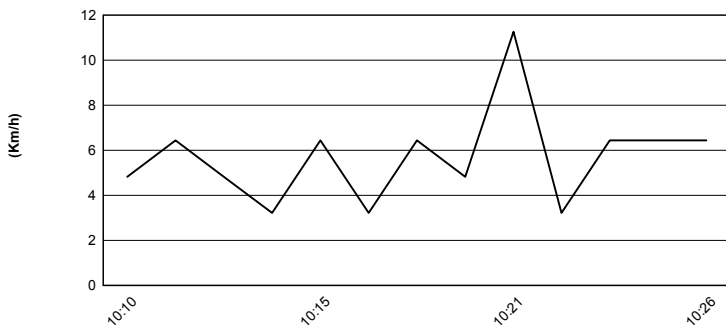
Air Pressure



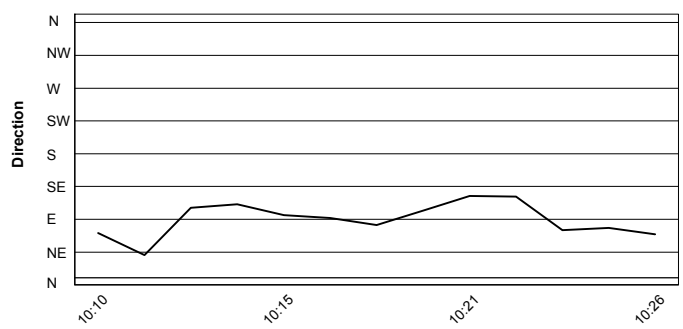
Humidity



Wind Speed



Wind Direction



16/09/2018

These data/results cannot be reproduced, stored and/or transmitted in whole or in part by any manner of electronic, mechanical, photocopying, recording, broadcasting or otherwise now known or herein after developed without the previous express consent by the copyright owner, except for reproduction in daily press and regular printed publications on sale to the public within 60 days of the event related to those data/results and always provided that copyright symbol appears together as follows below.

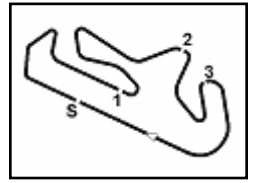
© DORNA WSBK ORGANIZATION Srl 2018



Official Tyre Supplier



Official Timekeeper



Portimao 4.592 m

NOLAN Portuguese Round, 14 - 16 September 2018 World Superbike - Starting Grid - Race 2

20 Laps x 4,592 km = 91,840 km

1	7 DAVIES C. Ducati	2	66 SYKES T. Kawasaki	3	76 BAZ L. BMW	
2	4	81 TORRES J. MV Agusta	5	54 RAZGATLIOGLU T. Kawasaki	6	21 RINALDI M. Ducati
3	7	60 VAN DER MARK M. Yamaha	8	33 MELANDRI M. Ducati	9	1 REA J. Kawasaki
4	10	50 LAVERTY E. Aprilia	11	32 SAVADORI L. Aprilia	12	12 FORES X. Ducati
5	13	22 LOWES A. Yamaha	14	2 CAMIER L. Honda	15	45 GAGNE J. Honda
6	16	36 MERCADO L. Kawasaki	17	68 HERNANDEZ Y. Kawasaki	18	99 JACOBSEN P. Honda
7	19	40 RAMOS R. Kawasaki	20	96 SMRZ J. Yamaha		

16/09/2018 Jury President

These data/results cannot be reproduced, stored and/or transmitted in whole or in part by any manner of electronic, mechanical, photocopying, recording, broadcasting or otherwise now known or herein after developed without the previous express consent by the copyright owner, except for reproduction in daily press and regular printed publications on sale to the public within 60 days of the event related to those data/results and always provided that copyright symbol appears together as follows below.

© DORNA WSBK ORGANIZATION Srl 2018

FIAT PERUGIA TIMING



Official Tyre Supplier



Official Timekeeper