

Pata Riviera di Rimini Round, 21-23 June 2019

Free Practices Combined Results

Misano Circuit Sic 58 4.226 m

No.	Rider	Nat	Team	Bike	Class	FP1	FP2	FP3	Time	Gap	Rel.	Avg	LL
1	64 F. CARICASULO	ITA	BARDAHL Evan Bros. WorldSSP Team	Yamaha YZF R6		1'39.979	1'39.951	1'53.519	1'39.951			152,211	39
2	3 R. DE ROSA	ITA	MV AGUSTA Reparto Corse	MV Agusta F3 675		1'40.136	1'40.340	1'52.547	1'40.136	0.185	0.185	151,929	49
3	21 R. KRUMMENACHER	SUI	BARDAHL Evan Bros. WorldSSP Team	Yamaha YZF R6		1'40.241	1'40.211	1'51.770	1'40.211	0.260	0.075	151,816	38
4	16 J. CLUZEL	FRA	GMT94 YAMAHA	Yamaha YZF R6		1'40.625	1'40.365	1'50.330	1'40.365	0.414	0.154	151,583	38
5	44 L. MAHIAS	FRA	Kawasaki Puccetti Racing	Kawasaki ZX-6R		1'40.545	1'40.836	1'53.584	1'40.545	0.594	0.180	151,311	40
6	38 H. SOOMER	EST	MPM WILSport Racedays	Honda CBR600RR		1'41.199	1'40.601	1'54.854	1'40.601	0.650	0.056	151,227	41
7	12 L. OTTAVIANI	ITA	SGM Tecnic	Yamaha YZF R6		1'41.200	1'40.717	1'59.828	1'40.717	0.766	0.116	151,053	37
8	60 L. GABELLINI	ITA	GOMMA Racing	Yamaha YZF R6		1'41.271	1'40.731	2'00.353	1'40.731	0.780	0.014	151,032	45
9	86 A. BADOVINI	ITA	Team Pedercini Racing	Kawasaki ZX-6R		1'40.871	1'41.163		1'40.871	0.920	0.140	150,822	23
10	32 I. VINALES	ESP	Kallio Racing	Yamaha YZF R6		1'41.038	1'41.034	1'55.207	1'41.034	1.083	0.163	150,579	40
11	78 H. OKUBO	JPN	Kawasaki Puccetti Racing	Kawasaki ZX-6R		1'41.136	1'41.226	1'56.322	1'41.136	1.185	0.102	150,427	46
12	11 K. SMITH	GBR	Team Pedercini Racing	Kawasaki ZX-6R	ESS	1'41.165	1'41.495	1'50.394	1'41.165	1.214	0.029	150,384	24
13	33 K. MANFREDI	ITA	Team Rosso e Nero	Yamaha YZF R6		1'41.176	1'41.298	1'56.496	1'41.176	1.225	0.011	150,368	45
14	36 T. GRADINGER	AUT	Kallio Racing	Yamaha YZF R6		1'41.540	1'41.224	1'55.474	1'41.224	1.273	0.048	150,296	41
15	47 R. HARTOG	NED	Team Hartog - Against Cancer	Kawasaki ZX-6R		1'42.008	1'41.421	1'54.385	1'41.421	1.470	0.197	150,004	44
16	56 P. SEBESTYEN	HUN	CIA Landlord Insurance Honda	Honda CBR600RR		1'41.460	1'41.780	1'52.906	1'41.460	1.509	0.039	149,947	40
17	55 M. ROCCOLI	ITA	Team Rosso Corsa	Yamaha YZF R6		1'41.679	1'41.476		1'41.476	1.525	0.016	149,923	32
18	94 C. PEROLARI	FRA	GMT94 YAMAHA	Yamaha YZF R6		1'41.763	1'41.536	1'54.115	1'41.536	1.585	0.060	149,835	43
19	20 F. FULIGNI	ITA	Team Rosso e Nero	Yamaha YZF R6		1'41.659	1'42.090	1'56.756	1'41.659	1.708	0.123	149,653	46
20	95 J. DANILO	FRA	CIA Landlord Insurance Honda	Honda CBR600RR		1'42.448	1'41.695	1'54.936	1'41.695	1.744	0.036	149,600	39
21	22 F. FULIGNI	ITA	MV AGUSTA Reparto Corse	MV Agusta F3 675		1'41.772	1'42.436	1'56.305	1'41.772	1.821	0.077	149,487	33
22	27 M. CASADEI	ITA	BARDAHL Evan Bros. WorldSSP Team	Yamaha YZF R6		1'42.903	1'41.967	1'58.011	1'41.967	2.016	0.195	149,201	33
23	84 L. CRESSON	BEL	Kallio Racing	Yamaha YZF R6		1'42.297	1'42.125	1'56.911	1'42.125	2.174	0.158	148,970	40
24	74 J. VAN SIKKELERUS	NED	MPM WILSport Racedays	Honda CBR600RR		1'42.783	1'42.134	1'56.437	1'42.134	2.183	0.009	148,957	41
25	65 M. CANDUCCI	ITA	DK MOTORSPORT	Yamaha YZF R6	ESS	1'43.281	1'42.323	2'08.773	1'42.323	2.372	0.189	148,682	45
26	10 N. CALERO	ESP	Orelac Racing VerdNatura	Kawasaki ZX-6R		1'42.396	1'42.545	1'55.641	1'42.396	2.445	0.073	148,576	38
27	26 P. HOBELSBERGER	GER	Hobelsberger Racing	Yamaha YZF R6		1'43.162	1'43.735		1'43.162	3.211	0.766	147,473	22
28	4 C. STANGE	GER	GEMAR - Ciociaria Corse WorldSSP Team	Honda CBR600RR		1'43.429	1'43.199	1'56.747	1'43.199	3.248	0.037	147,420	37
29	6 M. HERRERA	ESP	MS Racing	Yamaha YZF R6			1'43.271		1'43.271	3.320	0.072	147,317	25
30	30 G. VAN STRAALLEN	NED	EAB Racing Team	Kawasaki ZX-6R		1'43.271	1'43.318	1'57.310	1'43.271	3.320		147,317	37
31	13 R. ROLFO	ITA	Team GREEN SPEED	Kawasaki ZX-6R		1'43.516	1'43.337	1'59.642	1'43.337	3.386	0.066	147,223	30
32	53 G. SCONZA	ITA	GEMAR - Ciociaria Corse WorldSSP Team	Honda CBR600RR		1'45.213	1'44.528	1'58.409	1'44.528	4.577	1.191	145,546	39
33	40 A. GYORFI	HUN	Team Toth	Yamaha YZF R6		1'45.819	1'44.964		1'44.964	5.013	0.436	144,941	32
34	76 A. BERNARDI	ITA	Flembo Leader Team	Kawasaki ZX-6R	ESS	1'45.204	1'45.402		1'45.204	5.253	0.240	144,610	35

22/06/2019

These data/results cannot be reproduced, stored and/or transmitted in whole or in part by any manner of electronic, mechanical, photocopying, recording, broadcasting or otherwise now known or herein after developed without the previous express consent by the copyright owner, except for reproduction in daily press and regular printed publications on sale to the public within 60 days of the event related to those data/results and always provided that copyright symbol appears together as follows below.

© DORNA WSBK ORGANIZATION Srl 2019

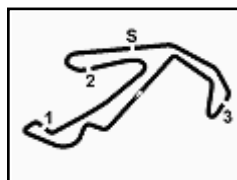
FICR PERUGIA TIMING



Official Tyre Supplier



Official Timekeeper



Pata Riviera di Rimini Round, 21-23 June 2019

Results Free Practice 3rd Session

Misano Circuit Sic 58.4.226 m

1 / 2

No.	Rider	Nat	Team	Bike	Class	Time	Gap	Rel.	Laps	Speed	
										Avg	Max
1	16 J. CLUZEL	FRA	GMT94 YAMAHA	Yamaha YZF R6		1'50.330			8	137,892	233,8
2	11 K. SMITH	GBR	Team Pedercini Racing	Kawasaki ZX-6R	ESS	1'50.394	0.064	0.064	9	137,812	231,8
3	21 R. KRUMMENACHER	SUI	BARDAHL Evan Bros. WorldSSP Team	Yamaha YZF R6		1'51.770	1.440	1.376	7	136,115	233,8
4	3 R. DE ROSA	ITA	MV AGUSTA Reparto Corse	MV Agusta F3 675		1'52.547	2.217	0.777	10	135,176	228,8
5	56 P. SEBESTYEN	HUN	CIA Landlord Insurance Honda	Honda CBR600RR		1'52.906	2.576	0.359	8	134,746	228,8
6	64 F. CARICASULO	ITA	BARDAHL Evan Bros. WorldSSP Team	Yamaha YZF R6		1'53.519	3.189	0.613	5	134,018	237,4
7	44 L. MAHIAS	FRA	Kawasaki Puccetti Racing	Kawasaki ZX-6R		1'53.584	3.254	0.065	5	133,941	227,8
8	94 C. PEROLARI	FRA	GMT94 YAMAHA	Yamaha YZF R6		1'54.115	3.785	0.531	8	133,318	232,3
9	47 R. HARTOG	NED	Team Hartog - Against Cancer	Kawasaki ZX-6R		1'54.385	4.055	0.270	6	133,003	228,3
10	38 H. SOOMER	EST	MPM WILSport Racedays	Honda CBR600RR		1'54.854	4.524	0.469	8	132,460	230,3
11	95 J. DANILO	FRA	CIA Landlord Insurance Honda	Honda CBR600RR		1'54.936	4.606	0.082	7	132,366	228,3
12	32 I. VINALES	ESP	Kallio Racing	Yamaha YZF R6		1'55.207	4.877	0.271	6	132,054	229,8
13	36 T. GRADINGER	AUT	Kallio Racing	Yamaha YZF R6		1'55.474	5.144	0.267	8	131,749	230,8
14	10 N. CALERO	ESP	Orelac Racing VerdNatura	Kawasaki ZX-6R		1'55.641	5.311	0.167	9	131,559	226,4
15	22 F. FULIGNI	ITA	MV AGUSTA Reparto Corse	MV Agusta F3 675		1'56.305	5.975	0.664	9	130,808	228,8
16	78 H. OKUBO	JPN	Kawasaki Puccetti Racing	Kawasaki ZX-6R		1'56.322	5.992	0.017	8	130,789	232,3
17	74 J. VAN SIKKELERUS	NED	MPM WILSport Racedays	Honda CBR600RR		1'56.437	6.107	0.115	8	130,659	227,8
18	33 K. MANFREDI	ITA	Team Rosso e Nero	Yamaha YZF R6		1'56.496	6.166	0.059	6	130,593	227,8
19	4 C. STANGE	GER	GEMAR - Ciociaria Corse WorldSSP Team	Honda CBR600RR		1'56.747	6.417	0.251	7	130,313	228,8
20	20 F. FULIGNI	ITA	Team Rosso e Nero	Yamaha YZF R6		1'56.756	6.426	0.009	10	130,303	227,8
21	84 L. CRESSON	BEL	Kallio Racing	Yamaha YZF R6		1'56.911	6.581	0.155	9	130,130	231,3
22	30 G. VAN STRAALLEN	NED	EAB Racing Team	Kawasaki ZX-6R		1'57.310	6.980	0.399	4	129,687	226,4
23	27 M. CASADEI	ITA	BARDAHL Evan Bros. WorldSSP Team	Yamaha YZF R6		1'58.011	7.681	0.701	5	128,917	228,8
----- Out 107% in this Session -----											
24	53 G. SCONZA	ITA	GEMAR - Ciociaria Corse WorldSSP Team	Honda CBR600RR		1'58.409	8.079	0.398	7	128,483	222,7
25	13 R. ROLFO	ITA	Team GREEN SPEED	Kawasaki ZX-6R		1'59.642	9.312	1.233	7	127,159	222,7
26	12 L. OTTAVIANI	ITA	SGM Tecnica	Yamaha YZF R6		1'59.828	9.498	0.186	7	126,962	225,5
27	60 L. GABELLINI	ITA	GOMMA Racing	Yamaha YZF R6		2'00.353	10.023	0.525	7	126,408	229,8
28	65 M. CANDUCCI	ITA	DK MOTORSPORT	Yamaha YZF R6	ESS	2'08.773	18.443	8.420	8	118,143	221,3
29	86 A. BADOVINI	ITA	Team Pedercini Racing	Kawasaki ZX-6R					0		
30	6 M. HERRERA	ESP	MS Racing	Yamaha YZF R6					0		
31	26 P. HOBELSBERGER	GER	Hobelsberger Racing	Yamaha YZF R6					0		
32	40 A. GYORFI	HUN	Team Toth	Yamaha YZF R6					0		
33	55 M. ROCCOLI	ITA	Team Rosso Corsa	Yamaha YZF R6					0		
34	76 A. BERNARDI	ITA	Flembbo Leader Team	Kawasaki ZX-6R	ESS				0		

Qualifying Lap Time (107% of 1'50.330): 1'58.054

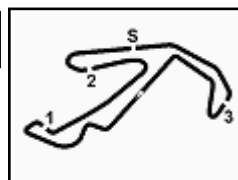
AIR	Humidity:	75%	Temp:	23°C
TRACK	Condition:	Wet	Temp:	24°C

Records	Pole (QP)	2015 J.Cluzel	1'37.482	156,070	Km/h
	Race (RC)	2018 S.Cortese	1'38.193	154,940	Km/h
	All Times (QP)	2015 J.Cluzel	1'37.482	156,070	Km/h

Start 09:30 End 09:52 The results are provisional until the end of the time limit for protests and appeals and the completion of the technical checks.

These data/results cannot be reproduced, stored and/or transmitted in whole or in part by any manner of electronic, mechanical, photocopying, recording, broadcasting or otherwise now known or herein after developed without the previous express consent by the copyright owner, except for reproduction in daily press and regular printed publications on sale to the public within 60 days of the event related to those data/results and always provided that copyright symbol appears together as follows below.

© DORNA WSBK ORGANIZATION Srl 2019



Pata Riviera di Rimini Round, 21-23 June 2019

Results Free Practice 3rd Session

Misano Circuit Sic 58 4.226 m

2 / 2

Session Highlights

Local Time	No. Rider	Description
09.28.53		Wet Practice (Lights On)
09.30.00		Start
09.30.05		WorldSSP Pit Intervention Time: 1min 21secs
09.39.19	33 K. MANFREDI	Current Lap Cancelled - Exceeded Track Limits - Turn 1
09.43.34	10 N. CALERO	Current Lap Cancelled - Exceeded Track Limits - Turn 1
09.45.11	94 C. PEROLARI	Current Lap Cancelled - Exceeded Track Limits - Turn 1
09.52.11		End Of Session

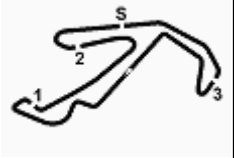
Fastest Laps Sequence

No.	Rider	Nat	Team	Bike	Local Time	Time	Gap	Avg
64	F. CARICASULO	ITA	BARDAHL Evan Bros. WorldSSP Team	Yamaha YZF R6	09:34'54.348	2'01.171		125,555
64	F. CARICASULO	ITA	BARDAHL Evan Bros. WorldSSP Team	Yamaha YZF R6	09:36'52.715	1'58.367	-2.804	128,529
11	K. SMITH	GBR	Team Pedercini Racing	Kawasaki ZX-6R	09:36'57.918	1'57.515	-0.852	129,461
21	R. KRUMMENACHER	SUI	BARDAHL Evan Bros. WorldSSP Team	Yamaha YZF R6	09:37'20.576	1'57.350	-0.165	129,643
16	J. CLUZEL	FRA	GMT94 YAMAHA	Yamaha YZF R6	09:38'32.007	1'54.413	-2.937	132,971
11	K. SMITH	GBR	Team Pedercini Racing	Kawasaki ZX-6R	09:38'51.796	1'53.878	-0.535	133,596
16	J. CLUZEL	FRA	GMT94 YAMAHA	Yamaha YZF R6	09:40'24.377	1'52.370	-1.508	135,388
11	K. SMITH	GBR	Team Pedercini Racing	Kawasaki ZX-6R	09:40'43.023	1'51.227	-1.143	136,780
11	K. SMITH	GBR	Team Pedercini Racing	Kawasaki ZX-6R	09:44'26.049	1'51.145	-0.082	136,881
16	J. CLUZEL	FRA	GMT94 YAMAHA	Yamaha YZF R6	09:45'58.983	1'50.754	-0.391	137,364
11	K. SMITH	GBR	Team Pedercini Racing	Kawasaki ZX-6R	09:46'16.443	1'50.394	-0.360	137,812
16	J. CLUZEL	FRA	GMT94 YAMAHA	Yamaha YZF R6	09:51'31.537	1'50.330	-0.064	137,892

Start 09:30 End 09:52 The results are provisional until the end of the time limit for protests and appeals and the completion of the technical checks.

These data/results cannot be reproduced, stored and/or transmitted in whole or in part by any manner of electronic, mechanical, photocopying, recording, broadcasting or otherwise now known or herein after developed without the previous express consent by the copyright owner, except for reproduction in daily press and regular printed publications on sale to the public within 60 days of the event related to those data/results and always provided that copyright symbol appears together as follows below.

© DORNA WSBK ORGANIZATION Srl 2019



Pata Riviera di Rimini Round, 21-23 June 2019

Best Sectors & Speed Free Practice 3rd Session

Misano Circuit Sic 58 4.226 m

BEST LAP

1	16 J. CLUZEL	Yamaha YZF R6	1'50.330
2	11 K. SMITH	Kawasaki ZX-6R	1'50.394
3	21 R. KRUMMENACHER	Yamaha YZF R6	1'51.770
4	3 R. DE ROSA	MV Agusta F3 675	1'52.547
5	56 P. SEBESTYEN	Honda CBR600RR	1'52.906
6	64 F. CARICASULO	Yamaha YZF R6	1'53.519
7	44 L. MAHIAS	Kawasaki ZX-6R	1'53.584
8	94 C. PEROLARI	Yamaha YZF R6	1'54.115
9	47 R. HARTOG	Kawasaki ZX-6R	1'54.385
10	38 H. SOOMER	Honda CBR600RR	1'54.854
11	95 J. DANILO	Honda CBR600RR	1'54.936
12	32 I. VINALES	Yamaha YZF R6	1'55.207
13	36 T. GRADINGER	Yamaha YZF R6	1'55.474
14	10 N. CALERO	Kawasaki ZX-6R	1'55.641
15	22 F. FULIGNI	MV Agusta F3 675	1'56.305
16	78 H. OKUBO	Kawasaki ZX-6R	1'56.322
17	74 J. VAN SIKKELERUS	Honda CBR600RR	1'56.437
18	33 K. MANFREDI	Yamaha YZF R6	1'56.496
19	4 C. STANGE	Honda CBR600RR	1'56.747
20	20 F. FULIGNI	Yamaha YZF R6	1'56.756
21	84 L. CRESSON	Yamaha YZF R6	1'56.911
22	30 G. VAN STRAALLEN	Kawasaki ZX-6R	1'57.310
23	27 M. CASADEI	Yamaha YZF R6	1'58.011
24	53 G. SCONZA	Honda CBR600RR	1'58.409
25	13 R. ROLFO	Kawasaki ZX-6R	1'59.642
26	12 L. OTTAVIANI	Yamaha YZF R6	1'59.828
27	60 L. GABELLINI	Yamaha YZF R6	2'00.353
28	65 M. CANDUCCI	Yamaha YZF R6	2'08.773
29	6 M. HERRERA	Yamaha YZF R6	
30	26 P. HOBELSBERGER	Yamaha YZF R6	
31	40 A. GYORFI	Yamaha YZF R6	
32	55 M. ROCCOLI	Yamaha YZF R6	
33	76 A. BERNARDI	Kawasaki ZX-6R	
34	86 A. BADOVINI	Kawasaki ZX-6R	

SPEED

1	64 F. CARICASULO	Yamaha YZF R6	237,4
2	21 R. KRUMMENACHER	Yamaha YZF R6	233,8
3	16 J. CLUZEL	Yamaha YZF R6	233,8
4	94 C. PEROLARI	Yamaha YZF R6	232,3
5	78 H. OKUBO	Kawasaki ZX-6R	232,3
6	11 K. SMITH	Kawasaki ZX-6R	231,8
7	84 L. CRESSON	Yamaha YZF R6	231,3
8	36 T. GRADINGER	Yamaha YZF R6	230,8
9	38 H. SOOMER	Honda CBR600RR	230,3
10	60 L. GABELLINI	Yamaha YZF R6	229,8
11	32 I. VINALES	Yamaha YZF R6	229,8
12	56 P. SEBESTYEN	Honda CBR600RR	228,8
13	22 F. FULIGNI	MV Agusta F3 675	228,8
14	27 M. CASADEI	Yamaha YZF R6	228,8
15	4 C. STANGE	Honda CBR600RR	228,8
16	3 R. DE ROSA	MV Agusta F3 675	228,8
17	95 J. DANILO	Honda CBR600RR	228,3
18	47 R. HARTOG	Kawasaki ZX-6R	228,3
19	74 J. VAN SIKKELERUS	Honda CBR600RR	227,8
20	33 K. MANFREDI	Yamaha YZF R6	227,8
21	44 L. MAHIAS	Kawasaki ZX-6R	227,8
22	20 F. FULIGNI	Yamaha YZF R6	227,8
23	30 G. VAN STRAALLEN	Kawasaki ZX-6R	226,4
24	10 N. CALERO	Kawasaki ZX-6R	226,4
25	12 L. OTTAVIANI	Yamaha YZF R6	225,5
26	53 G. SCONZA	Honda CBR600RR	222,7
27	13 R. ROLFO	Kawasaki ZX-6R	222,7
28	65 M. CANDUCCI	Yamaha YZF R6	221,3

SEG. 1

1	11 K. SMITH	29.416
2	16 J. CLUZEL	29.466
3	21 R. KRUMMENACHER	30.036
4	64 F. CARICASULO	30.115
5	3 R. DE ROSA	30.139
6	56 P. SEBESTYEN	30.187
7	94 C. PEROLARI	30.506
8	44 L. MAHIAS	30.509
9	47 R. HARTOG	30.718
10	32 I. VINALES	30.785
11	95 J. DANILO	30.798
12	22 F. FULIGNI	30.852
13	38 H. SOOMER	30.878
14	36 T. GRADINGER	30.978
15	10 N. CALERO	31.006
16	78 H. OKUBO	31.067
17	20 F. FULIGNI	31.121
18	33 K. MANFREDI	31.201
19	74 J. VAN SIKKELERUS	31.396
20	84 L. CRESSON	31.416
21	30 G. VAN STRAALLEN	31.460
22	4 C. STANGE	31.558
23	27 M. CASADEI	31.792
24	53 G. SCONZA	31.793
25	13 R. ROLFO	32.095
26	12 L. OTTAVIANI	32.099
27	60 L. GABELLINI	32.173
28	65 M. CANDUCCI	34.949

SEG. 2

1	11 K. SMITH	26.084
2	16 J. CLUZEL	26.149
3	64 F. CARICASULO	26.342
4	21 R. KRUMMENACHER	26.402
5	3 R. DE ROSA	26.403
6	38 H. SOOMER	26.629
7	56 P. SEBESTYEN	26.643
8	94 C. PEROLARI	26.692
9	44 L. MAHIAS	26.759
10	32 I. VINALES	26.933
11	36 T. GRADINGER	26.964
12	47 R. HARTOG	27.025
13	30 G. VAN STRAALLEN	27.097
14	20 F. FULIGNI	27.112
15	10 N. CALERO	27.214
16	22 F. FULIGNI	27.229
17	84 L. CRESSON	27.265
18	74 J. VAN SIKKELERUS	27.286
19	78 H. OKUBO	27.316
20	95 J. DANILO	27.325
21	33 K. MANFREDI	27.391
22	4 C. STANGE	27.401
23	27 M. CASADEI	27.420
24	53 G. SCONZA	27.790
25	12 L. OTTAVIANI	27.831
26	60 L. GABELLINI	27.889
27	13 R. ROLFO	28.206
28	65 M. CANDUCCI	29.612
29	86 A. BADOVINI	30.194

SEG. 3

1	16 J. CLUZEL	29.994
2	21 R. KRUMMENACHER	30.291
3	11 K. SMITH	30.298
4	3 R. DE ROSA	30.646
5	44 L. MAHIAS	30.775
6	64 F. CARICASULO	30.812
7	56 P. SEBESTYEN	30.826
8	94 C. PEROLARI	31.170
9	36 T. GRADINGER	31.230
10	95 J. DANILO	31.309
11	47 R. HARTOG	31.310
12	32 I. VINALES	31.431
13	38 H. SOOMER	31.514
14	22 F. FULIGNI	31.622
15	10 N. CALERO	31.732
16	4 C. STANGE	31.760
17	20 F. FULIGNI	31.825
18	33 K. MANFREDI	31.837
19	78 H. OKUBO	31.899
20	53 G. SCONZA	32.035
21	74 J. VAN SIKKELERUS	32.079
22	84 L. CRESSON	32.232
23	27 M. CASADEI	32.327
24	30 G. VAN STRAALLEN	32.496
25	13 R. ROLFO	32.657
26	12 L. OTTAVIANI	32.758
27	60 L. GABELLINI	33.002
28	86 A. BADOVINI	34.736
29	65 M. CANDUCCI	35.321

SEG. 4

1	11 K. SMITH	24.542
2	16 J. CLUZEL	24.653
3	3 R. DE ROSA	24.900
4	21 R. KRUMMENACHER	25.041
5	56 P. SEBESTYEN	25.079
6	47 R. HARTOG	25.332
7	64 F. CARICASULO	25.368
8	44 L. MAHIAS	25.420
9	95 J. DANILO	25.490
10	94 C. PEROLARI	25.509
11	38 H. SOOMER	25.554
12	36 T. GRADINGER	25.605
13	32 I. VINALES	25.614
14	74 J. VAN SIKKELERUS	25.642
15	10 N. CALERO	25.687
16	78 H. OKUBO	25.944
17	33 K. MANFREDI	25.986
18	84 L. CRESSON	25.998
19	30 G. VAN STRAALLEN	26.009
20	4 C. STANGE	26.028
21	20 F. FULIGNI	26.125
22	22 F. FULIGNI	26.176
23	27 M. CASADEI	26.251
24	12 L. OTTAVIANI	26.572
25	53 G. SCONZA	26.672
26	13 R. ROLFO	26.684
27	60 L. GABELLINI	26.832
28	65 M. CANDUCCI	28.574

22/06/2019

These data/results cannot be reproduced, stored and/or transmitted in whole or in part by any manner of electronic, mechanical, photocopying, recording, broadcasting or otherwise now known or herein after developed without the previous express consent by the copyright owner, except for reproduction in daily press and regular printed publications on sale to the public within 60 days of the event related to those data/results and always provided that copyright symbol appears together as follows below.

© DORNA WSBK ORGANIZATION Srl 2019

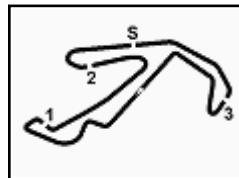
FICR PERUGIA TIMING



Official Tyre Supplier



Official Timekeeper



Pata Riviera di Rimini Round, 21-23 June 2019

Ideal Times Free Practice 3rd Session

Misano Circuit Sic 58 4.226 m

1 / 2

No.	Rider	Nat	Bike	Seg. 1	Seg. 2	Seg. 3	Seg. 4	Ideal Time					
				Diff. 1	Diff. 2	Diff. 3	Diff. 4	Best Lap	Pos.	Diff.			
1	16 J. CLUZEL	FRA	Yamaha YZF R6	29.466	26.149	29.994 +0.068	24.653	1'50.262	1'50.330	1	0.068		
2	11 K. SMITH	GBR	Kawasaki ZX-6R	29.416	26.084 +0.054	30.298	24.542	1'50.340	1'50.394	2	0.054		
3	21 R. KRUMMENACHER	SUI	Yamaha YZF R6	30.036	26.402	30.291	25.041	1'51.770	1'51.770	3			
4	3 R. DE ROSA	ITA	MV Agusta F3 675	30.139 +0.459	26.403	30.646	24.900	1'52.088	1'52.547	4	0.459		
5	64 F. CARICASULO	ITA	Yamaha YZF R6	30.115 +0.167	26.342 +0.334	30.812 +0.381	25.368	1'52.637	1'53.519	6	0.882		
6	56 P. SEBESTYEN	HUN	Honda CBR600RR	30.187	26.643 +0.005	30.826	25.079 +0.166	1'52.735	1'52.906	5	0.171		
7	44 L. MAHIAS	FRA	Kawasaki ZX-6R	30.509	26.759 +0.121	30.775	25.420	1'53.463	1'53.584	7	0.121		
8	94 C. PEROLARI	FRA	Yamaha YZF R6	30.506	26.692	31.170 +0.238	25.509	1'53.877	1'54.115	8	0.238		
9	47 R. HARTOG	NED	Kawasaki ZX-6R	30.718	27.025	31.310	25.332	1'54.385	1'54.385	9			
10	38 H. SOOMER	EST	Honda CBR600RR	30.878 +0.279	26.629	31.514	25.554	1'54.575	1'54.854	10	0.279		
11	32 I. VINALES	ESP	Yamaha YZF R6	30.785 +0.444	26.933	31.431	25.614	1'54.763	1'55.207	12	0.444		
12	36 T. GRADINGER	AUT	Yamaha YZF R6	30.978	26.964	31.230 +0.472	25.605 +0.225	1'54.777	1'55.474	13	0.697		
13	95 J. DANILO	FRA	Honda CBR600RR	30.798	27.325	31.309	25.490 +0.014	1'54.922	1'54.936	11	0.014		
14	10 N. CALERO	ESP	Kawasaki ZX-6R	31.006	27.214 +0.002	31.732	25.687	1'55.639	1'55.641	14	0.002		
15	22 F. FULIGNI	ITA	MV Agusta F3 675	30.852	27.229 +0.042	31.622 +0.061	26.176 +0.323	1'55.879	1'56.305	15	0.426		
16	20 F. FULIGNI	ITA	Yamaha YZF R6	31.121	27.112	31.825 +0.418	26.125 +0.155	1'56.183	1'56.756	20	0.573		
17	78 H. OKUBO	JPN	Kawasaki ZX-6R	31.067 +0.096	27.316	31.899	25.944	1'56.226	1'56.322	16	0.096		
18	74 J. VAN SIKKELERUS	NED	Honda CBR600RR	31.396 +0.034	27.286	32.079	25.642	1'56.403	1'56.437	17	0.034		
19	33 K. MANFREDI	ITA	Yamaha YZF R6	31.201 +0.081	27.391	31.837	25.986	1'56.415	1'56.496	18	0.081		
20	4 C. STANGE	GER	Honda CBR600RR	31.558	27.401	31.760	26.028	1'56.747	1'56.747	19			
21	84 L. CRESSON	BEL	Yamaha YZF R6	31.416	27.265	32.232	25.998	1'56.911	1'56.911	21			
22	30 G. VAN STRAALEN	NED	Kawasaki ZX-6R	31.460 +0.044	27.097	32.496 +0.100	26.009 +0.104	1'57.062	1'57.310	22	0.248		
23	27 M. CASADEI	ITA	Yamaha YZF R6	31.792 +0.174	27.420 +0.047	32.327	26.251	1'57.790	1'58.011	23	0.221		
24	53 G. SCONZA	ITA	Honda CBR600RR	31.793	27.790	32.035 +0.119	26.672	1'58.290	1'58.409	24	0.119		
25	12 L. OTTAVIANI	ITA	Yamaha YZF R6	32.099	27.831 +0.568	32.758	26.572	1'59.260	1'59.828	26	0.568		
26	13 R. ROLFO	ITA	Kawasaki ZX-6R	32.095	28.206	32.657	26.684	1'59.642	1'59.642	25			
27	60 L. GABELLINI	ITA	Yamaha YZF R6	32.173	27.889 +0.250	33.002 +0.207	26.832	1'59.896	2'00.353	27	0.457		
28	65 M. CANDUCCI	ITA	Yamaha YZF R6	34.949	29.612	35.321 +0.213	28.574 +0.104	2'08.456	2'08.773	28	0.317		
	6 M. HERRERA	ESP	Yamaha YZF R6	One or more sectors missing									
	26 P. HOBELSBERGER	GER	Yamaha YZF R6	One or more sectors missing									
	40 A. GYORFI	HUN	Yamaha YZF R6	One or more sectors missing									
	55 M. ROCCOLI	ITA	Yamaha YZF R6	One or more sectors missing									
	76 A. BERNARDI	ITA	Kawasaki ZX-6R	One or more sectors missing									

22/06/2019

These data/results cannot be reproduced, stored and/or transmitted in whole or in part by any manner of electronic, mechanical, photocopying, recording, broadcasting or otherwise now known or herein after developed without the previous express consent by the copyright owner, except for reproduction in daily press and regular printed publications on sale to the public within 60 days of the event related to those data/results and always provided that copyright symbol appears together as follows below.

© DORNA WSBK ORGANIZATION Srl 2019

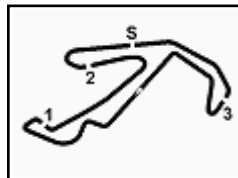
FICR PERUGIA TIMING



Official Tyre Supplier



Official Timekeeper


Pata Riviera di Rimini Round, 21-23 June 2019
Ideal Times Free Practice 3rd Session

 Misano Circuit Sic 58 4.226 m
2 / 2

No. Rider	Nat	Bike	Seg. 1	Seg. 2	Seg. 3	Seg. 4	Ideal Time			
			Diff. 1	Diff. 2	Diff. 3	Diff. 4	Best Lap	Pos.	Diff.	
86 A. BADOVINI	ITA	Kawasaki ZX-6R	One or more sectors missing							
Overall Ideal Time			29.416	26.084	29.994	24.542	1'50.036			

22/06/2019

These data/results cannot be reproduced, stored and/or transmitted in whole or in part by any manner of electronic, mechanical, photocopying, recording, broadcasting or otherwise now known or herein after developed without the previous express consent by the copyright owner, except for reproduction in daily press and regular printed publications on sale to the public within 60 days of the event related to those data/results and always provided that copyright symbol appears together as follows below.

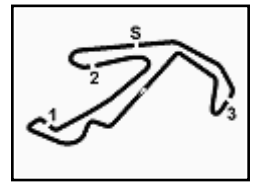
© DORNA WSBK ORGANIZATION Srl 2019

PIRELLI PERUGIA TIMING


Official Tyre Supplier



Official Timekeeper



Pata Riviera di Rimini Round, 21-23 June 2019

Chronological Analysis Free Practice 3rd Session

Misano Circuit Sic 58 4.226 m

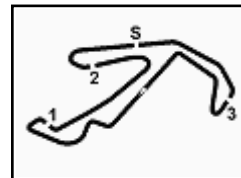
1 / 3

1° 16 J. CLUZEL (1'50.330)								6° 64 F. CARICASULO (1'53.519)							
Lap	Seg.1	Seg.2	Seg.3	Seg.4	Lap Time	km/h	Local Time	Lap	Seg.1	Seg.2	Seg.3	Seg.4	Lap Time	km/h	Local Time
1		28.810	32.426	25.874		224,5	9:36'37.594	1							9:30'33.020
2	31.131	27.234	30.779	25.269	1'54.413	230,3	9:38'32.007	2	47.751	29.781	34.689	27.936	2'20.157P	225,9	9:32'53.177
3	30.165	26.485	30.672	25.048	1'52.370	232,3	9:40'24.377	3	33.366	28.358	32.649	26.798	2'01.171	229,3	9:34'54.348
4	30.013	26.501	30.497	24.787	1'51.798	233,3	9:42'16.175	4	32.004	27.666	32.210	26.487	1'58.367	231,3	9:36'52.715
5	29.965	26.846	30.163	25.080	1'52.054	233,8	9:44'08.229	5	30.913	26.800	31.581	25.975	1'55.269	235,3	9:38'47.984
6	29.609	26.339	29.994	24.812	1'50.754	232,3	9:45'58.983	6	30.282	26.676	31.193	25.368	1'53.519	237,4	9:40'41.503
7	29.921	26.358	30.264	24.791	1'51.334	231,8	9:47'50.317								
8	29.480	26.445	30.064	24.901	1'50.890	232,8	9:49'41.207								
9	29.466	26.149	30.062	24.653	1'50.330	230,3	9:51'31.537								
2° 11 K. SMITH (1'50.394)								7° 44 L. MAHIAS (1'53.584)							
Lap	Seg.1	Seg.2	Seg.3	Seg.4	Lap Time	km/h	Local Time	Lap	Seg.1	Seg.2	Seg.3	Seg.4	Lap Time	km/h	Local Time
1		29.696	34.061	26.794		224,1	9:35'00.403	1		29.588	33.491	27.296		225,0	9:36'47.981
2	31.881	27.900	32.031	25.703	1'57.515	227,8	9:36'57.918	2	32.085	27.729	32.083	26.298	1'58.195	225,5	9:38'46.176
3	30.741	26.705	31.390	25.042	1'53.878	227,8	9:38'51.796	3	31.019	27.245	32.082	25.649	1'55.995	216,4	9:40'42.171
4	29.754	26.286	30.567	24.620	1'51.227	230,8	9:40'43.023	4	30.585	26.759	32.740	39.468	2'09.552P	227,4	9:42'51.723
5	29.934	26.369	30.517	25.061	1'51.881	231,8	9:42'34.904	5	4'01.410	27.668	31.582	26.127	5'26.787P	225,5	9:48'18.510
6	29.590	26.284	30.594	24.677	1'51.145	230,3	9:44'26.049	6	30.509	26.880	30.775	25.420	1'53.584	227,8	9:50'12.094
7	29.416	26.138	30.298	24.542	1'50.394	231,3	9:46'16.443								
8	29.843	26.084	30.815	24.577	1'51.319	229,8	9:48'07.762								
9	29.705	26.241	30.469	24.668	1'51.083	231,8	9:49'58.845								
10	30.290	26.481	32.708	40.707	2'10.186P	220,0	9:52'09.031								
3° 21 R. KRUMMENACHER (1'51.770)								8° 94 C. PEROLARI (1'54.115)							
Lap	Seg.1	Seg.2	Seg.3	Seg.4	Lap Time	km/h	Local Time	Lap	Seg.1	Seg.2	Seg.3	Seg.4	Lap Time	km/h	Local Time
1							9:33'03.770	1		28.757	32.805	26.963		225,9	9:35'20.798
2	46.763	28.745	32.710	31.238	2'19.456P	228,8	9:35'23.226	2	32.040	27.625	32.640	26.369	1'58.674	232,3	9:37'19.472
3	31.505	27.508	31.643	26.694	1'57.350	231,3	9:37'20.576	3	30.956	27.464	31.576	25.715	1'55.711	228,3	9:39'15.183
4	31.628	27.087	31.298	25.524	1'55.537	232,3	9:39'16.113	4	30.657	26.916	31.489	25.820	1'54.882	230,3	9:41'10.065
5	31.042	26.957	31.576	5'05.771	6'35.346P	233,8	9:45'51.459	5	30.897	26.920	31.536	25.511	1'54.864	229,8	9:43'04.929
6	48.895	27.609	31.458	26.676	2'14.638P	229,8	9:48'06.097	6	30.506	26.692	31.408	25.509	1'54.115	229,8	9:44'59.044
7	30.184	26.438	30.868	25.202	1'52.692	231,3	9:49'58.789	7	37.962	27.512	31.610	26.036	2'03.120C	229,8	9:47'02.164
8	30.036	26.402	30.291	25.041	1'51.770	230,8	9:51'50.559	8	30.977	26.878	31.878	26.658	1'56.391	229,8	9:48'58.555
								9	30.574	26.853	31.170	25.663	1'54.260	230,8	9:50'52.815
4° 3 R. DE ROSA (1'52.547)								9° 47 R. HARTOG (1'54.385)							
Lap	Seg.1	Seg.2	Seg.3	Seg.4	Lap Time	km/h	Local Time	Lap	Seg.1	Seg.2	Seg.3	Seg.4	Lap Time	km/h	Local Time
1							9:30'41.512	1							9:39'40.244
2	54.215	31.283	35.808	28.512	2'29.818P	213,4	9:33'11.330	2	49.909	31.397	35.606	28.696	2'25.608P	216,0	9:42'05.852
3	33.886	28.619	34.103	28.406	2'05.014	215,6	9:35'16.344	3	33.521	28.650	33.498	27.059	2'02.728	224,5	9:44'08.580
4	32.960	27.944	32.241	26.290	1'59.435	227,4	9:37'15.779	4	32.578	27.773	32.782	26.108	1'59.241	225,5	9:46'07.821
5	32.351	26.974	31.733	25.658	1'56.716	224,5	9:39'12.495	5	31.276	27.284	32.309	25.624	1'56.493	225,0	9:48'04.314
6	30.784	27.021	31.229	25.550	1'54.584	226,9	9:41'07.079	6	31.159	27.059	31.499	25.630	1'55.347	228,3	9:49'59.661
7	30.583	26.759	30.976	25.544	1'53.862	228,8	9:43'00.941	7	30.718	27.025	31.310	25.332	1'54.385	226,4	9:51'54.046
8	30.368	26.864	31.053	25.397	1'53.682	228,8	9:44'54.623								
9	30.394	27.832	31.060	25.346	1'54.632	226,9	9:46'49.255								
10	30.139	27.005	30.737	25.209	1'53.090	228,8	9:48'42.345								
11	30.598	26.403	30.646	24.900	1'52.547	227,4	9:50'34.892								
5° 56 P. SEBESTYEN (1'52.906)								10° 38 H. SOOMER (1'54.854)							
Lap	Seg.1	Seg.2	Seg.3	Seg.4	Lap Time	km/h	Local Time	Lap	Seg.1	Seg.2	Seg.3	Seg.4	Lap Time	km/h	Local Time
1		31.520	34.128	27.600		223,6	9:36'10.184	1		29.795	34.234	27.539		224,5	9:35'18.384
2	36.535	29.060	33.262	26.311	2'05.168	225,0	9:38'15.352	2	33.340	28.003	33.651	26.883	2'01.877	228,8	9:37'20.261
3	32.160	27.583	32.440	25.896	1'58.079	222,7	9:40'13.431	3	31.650	27.389	32.222	25.865	1'57.126	228,8	9:39'17.387
4	31.112	27.127	31.506	25.609	1'55.354	227,4	9:42'08.785	4	31.531	26.963	31.711	25.837	1'56.042	230,3	9:41'13.429
5	31.071	27.108	31.335	25.703	1'55.217	226,4	9:44'04.002	5	30.933	27.244	31.911	25.599	1'55.687	229,8	9:43'09.116
6	30.983	26.802	31.273	25.440	1'54.498	226,4	9:45'58.500	6	30.878	26.868	31.732	25.945	1'55.423	229,8	9:45'04.539
7	30.222	26.643	31.082	25.079	1'53.026	228,8	9:47'51.526	7	31.157	26.629	31.514	25.554	1'54.854	228,8	9:46'59.393
8	30.298	26.762	31.489	25.192	1'53.741	227,4	9:49'45.267	8	31.411	26.695	32.039	26.622	1'56.767	228,3	9:48'56.160
9	30.187	26.648	30.826	25.245	1'52.906	226,9	9:51'38.173	9	31.924	27.383	31.520	26.061	1'56.888	227,8	9:50'53.048
5° 56 P. SEBESTYEN (1'52.906)								11° 95 J. DANILO (1'54.936)							
Lap	Seg.1	Seg.2	Seg.3	Seg.4	Lap Time	km/h	Local Time	Lap	Seg.1	Seg.2	Seg.3	Seg.4	Lap Time	km/h	Local Time
1								1		31.891	33.922	27.439		224,1	9:36'20.338
2	36.535	29.060	33.262	26.311	2'05.168	225,0	9:38'15.352	2	33.358	28.610	32.723	26.769	2'01.460	225,9	9:38'21.798
3	32.160	27.583	32.440	25.896	1'58.079	222,7	9:40'13.431	3	32.308	28.175	32.307	25.939	1'58.729	225,9	9:40'20.527
4	31.112	27.127	31.506	25.609	1'55.354	227,4	9:42'08.785	4	31.515	27.791	32.055	25.831	1'57.192	226,4	9:42'17.719
5	31.071	27.108	31.335	25.703	1'55.217	226,4	9:44'04.002	5	31.051	27.493	31.823	26.326	1'56.693	228,3	9:44'14.412
6	30.983	26.802	31.273	25.440	1'54.498	226,4	9:45'58.500	6	30.961	27.689	31.931	26.184	1'56.765	228,3	9:46'11.177
7	30.222	26.643	31.082	25.079	1'53.026	228,8	9:47'51.526	7	31.030	27.392	31.433	25.490	1'55.345	228,3	9:48'06.522
8	30.298	26.762	31.489	25.192	1'53.741	227,4	9:49'45.267	8	30.798	27.325	31.309	25.504	1'54.936	228,3	9:50'01.458
9	30.187	26.648	30.826	25.245	1'52.906	226,9	9:51'38.173								

22/06/2019 P = Pits In/Out - C = Lap Time Cancelled

These data/results cannot be reproduced, stored and/or transmitted in whole or in part by any manner of electronic, mechanical, photocopying, recording, broadcasting or otherwise now known or herein after developed without the previous express consent by the copyright owner, except for reproduction in daily press and regular printed publications on sale to the public within 60 days of the event related to those data/results and always provided that copyright symbol appears together as follows below.

© DORNA WSBK ORGANIZATION Srl 2019



Pata Riviera di Rimini Round, 21-23 June 2019

Chronological Analysis Free Practice 3rd Session

Misano Circuit Sic 58.4.226m

2 / 3

12° 32 I. VINALES (1'55.207)								17° 74 J. VAN SIKKELERUS (1'56.437)							
Lap	Seg.1	Seg.2	Seg.3	Seg.4	Lap Time	km/h	Local Time	Lap	Seg.1	Seg.2	Seg.3	Seg.4	Lap Time	km/h	Local Time
1		31.500	43.730	30.339		167,4	9:39'24.930	1		31.749	36.424	29.348		205,7	9:33'07.323
2	34.078	28.183	32.990	26.528	2'01.779	226,4	9:41'26.709	2	35.970	29.425	34.177	26.976	2'06.548	220,4	9:35'13.871
3	32.039	27.285	31.813	25.851	1'56.988	229,3	9:43'23.697	3	33.155	28.347	33.543	26.304	2'01.349	224,1	9:37'15.220
4	31.859	27.808	41.708	27.635	2'09.010	159,1	9:45'32.707	4	32.686	27.609	32.266	25.866	1'58.427	226,9	9:39'13.647
5	31.623	27.341	32.290	28.044	1'59.298	228,3	9:47'32.005	5	31.817	27.785	32.088	26.178	1'57.868	227,8	9:41'11.515
6	31.229	26.933	31.431	25.614	1'55.207	228,3	9:49'27.212	6	32.218	27.915	33.228	38.324	2'11.685P	224,5	9:43'23.200
7	30.785	27.058	31.668	25.809	1'55.320	229,8	9:51'22.532	7	1'34.892	28.094	33.723	26.672	3'03.381P	224,1	9:46'26.581
								8	31.430	27.286	32.079	25.642	1'56.437	225,9	9:48'23.018
								9	31.396	27.409	32.225	25.698	1'56.728	225,9	9:50'19.746

13° 36 T. GRADINGER (1'55.474)								18° 33 K. MANFREDI (1'56.496)							
Lap	Seg.1	Seg.2	Seg.3	Seg.4	Lap Time	km/h	Local Time	Lap	Seg.1	Seg.2	Seg.3	Seg.4	Lap Time	km/h	Local Time
1		29.619	34.178	26.969		227,8	9:35'01.175	1							9:30'44.232
2	32.519	28.152	32.726	26.645	2'00.042	229,8	9:37'01.217	2	49.228	30.327	34.064	28.164	2'21.783P	224,1	9:33'06.015
3	32.450	27.981	32.440	26.160	1'59.031	227,4	9:39'00.248	3	33.275	28.598	33.026	27.185	2'02.084	225,0	9:35'08.099
4	31.345	27.252	31.793	25.794	1'56.184	230,8	9:40'56.432	4	32.185	27.922	32.607	26.649	1'59.363	223,6	9:37'07.462
5	31.232	27.167	31.537	25.605	1'55.541	230,8	9:42'51.973	5	31.802	27.806	32.526	26.645	1'58.779	225,5	9:39'06.241
6	30.987	27.404	31.784	27.138	1'57.313	230,3	9:44'49.286	6	35.958	28.811	32.400	26.040	2'03.209C	227,4	9:41'09.450
7	32.190	27.373	31.517	25.845	1'56.925	229,8	9:46'46.211	7	31.282	27.391	31.837	25.986	1'56.496	227,8	9:43'05.946
8	30.978	26.964	31.702	25.830	1'55.474	229,8	9:48'41.685								
9	32.084	27.034	31.230	25.607	1'55.955	230,3	9:50'37.640								

14° 10 N. CALERO (1'55.641)								19° 4 C. STANGE (1'56.747)							
Lap	Seg.1	Seg.2	Seg.3	Seg.4	Lap Time	km/h	Local Time	Lap	Seg.1	Seg.2	Seg.3	Seg.4	Lap Time	km/h	Local Time
1		31.778	37.267	29.830		192,9	9:33'08.215	1		32.210	36.930	29.565		214,3	9:34'03.451
2	35.362	29.360	34.827	28.923	2'08.472	224,1	9:35'16.687	2	35.811	30.086	34.221	27.928	2'08.046	222,2	9:36'11.497
3	33.591	28.659	34.026	28.018	2'04.294	225,0	9:37'20.981	3	34.250	29.690	35.404	39.067	2'18.411P	206,9	9:38'29.908
4	33.157	28.075	32.922	26.570	2'00.724	225,9	9:39'21.705	4	2'11.717	30.059	33.370	27.811	3'42.957P	224,5	9:42'12.865
5	31.717	27.694	32.950	26.515	1'58.876	225,5	9:41'20.581	5	33.381	28.457	32.921	27.082	2'01.841	224,5	9:44'14.706
6	31.485	27.446	32.809	26.584	1'58.324	226,4	9:43'18.905	6	32.481	28.041	32.515	26.805	1'59.842	225,9	9:46'14.548
7	40.193	28.760	36.499	27.196	2'12.648C	164,4	9:45'31.553	7	32.372	28.100	31.847	26.211	1'58.530	228,8	9:48'13.078
8	31.945	27.570	32.333	26.455	1'58.303	224,1	9:47'29.856	8	31.558	27.401	31.760	26.028	1'56.747	225,9	9:50'09.825
9	31.317	27.214	32.023	26.035	1'56.589	225,0	9:49'26.445								
10	31.006	27.216	31.732	25.687	1'55.641	225,0	9:51'22.086								

15° 22 F. FULIGNI (1'56.305)								20° 20 F. FULIGNI (1'56.756)							
Lap	Seg.1	Seg.2	Seg.3	Seg.4	Lap Time	km/h	Local Time	Lap	Seg.1	Seg.2	Seg.3	Seg.4	Lap Time	km/h	Local Time
1							9:31'57.711	1							9:30'33.928
2	50.859	31.713	35.578	28.846	2'26.996P	220,4	9:34'24.707	2	54.926	31.466	37.330	29.533	2'33.255P	213,4	9:33'07.183
3	33.777	28.947	33.114	27.412	2'03.250	225,9	9:36'27.957	3	35.819	29.509	34.799	28.298	2'08.425	220,9	9:35'15.608
4	32.594	28.245	32.919	27.132	2'00.890	227,8	9:38'28.847	4	34.105	28.873	34.062	27.863	2'04.903	224,5	9:37'20.511
5	31.660	27.833	31.944	26.300	1'57.737	228,8	9:40'26.584	5	33.424	28.655	33.379	26.939	2'02.397	226,9	9:39'22.908
6	30.934	27.432	31.753	26.241	1'56.360	228,3	9:42'22.944	6	32.774	28.783	33.038	26.880	2'01.475	225,9	9:41'24.383
7	30.852	27.271	31.683	26.499	1'56.305	228,3	9:44'19.249	7	31.846	27.954	32.359	26.716	1'58.875	226,9	9:43'23.258
8	31.049	27.345	31.622	26.321	1'56.337	227,8	9:46'15.586	8	31.992	27.384	31.990	26.672	1'58.038	226,4	9:45'21.296
9	31.645	27.541	31.674	26.176	1'57.036	227,8	9:48'12.622	9	31.682	27.854	32.323	26.593	1'58.452	225,9	9:47'19.748
10	30.957	27.229	32.222	26.184	1'56.592	227,4	9:50'09.214	10	31.370	27.656	31.825	26.125	1'56.976	226,9	9:49'16.724
								11	31.121	27.112	32.243	26.280	1'56.756	227,8	9:51'13.480

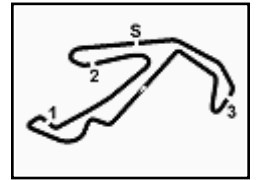
16° 78 H. OKUBO (1'56.322)								21° 84 L. CRESSON (1'56.911)							
Lap	Seg.1	Seg.2	Seg.3	Seg.4	Lap Time	km/h	Local Time	Lap	Seg.1	Seg.2	Seg.3	Seg.4	Lap Time	km/h	Local Time
1		29.629	35.331	28.113		222,2	9:33'46.790	1		30.375	34.599	28.234		223,1	9:33'37.541
2	33.659	28.726	34.142	27.212	2'03.739	224,5	9:35'50.529	2	34.002	28.878	33.910	27.714	2'04.504	228,3	9:35'42.045
3	32.636	28.330	33.330	26.715	2'01.011	226,4	9:37'51.540	3	33.393	28.637	33.672	27.679	2'03.381	228,8	9:37'45.426
4	31.668	27.620	32.695	26.185	1'58.168	228,8	9:39'49.708	4	33.009	28.394	32.848	26.622	2'00.873	228,8	9:39'46.299
5	31.646	27.522	32.465	26.018	1'57.651	228,8	9:41'47.359	5	32.247	27.898	32.576	26.350	1'59.071	230,8	9:41'45.370
6	31.163	27.316	31.899	25.944	1'56.322	232,3	9:43'43.681	6	31.900	27.685	32.483	26.060	1'58.128	230,8	9:43'43.498
7	32.388	27.480	32.840	26.371	1'59.079	229,3	9:45'42.760	7	33.054	27.830	32.894	26.347	2'00.125	230,8	9:45'43.623
8	31.520	27.341	32.435	26.046	1'57.342	229,3	9:47'40.102	8	32.380	27.648	32.539	26.187	1'58.754	230,8	9:47'42.377
9	31.067	33.794	35.117	39.397	2'19.375P	222,7	9:49'59.477	9	31.886	27.587	32.844	26.415	1'58.732	230,3	9:49'41.109
								10	31.416	27.265	32.232	25.998	1'56.911	231,3	9:51'38.020

22° 30 G. VAN STRAALLEN (1'57.310)							
Lap	Seg.1	Seg.2	Seg.3	Seg.4	Lap Time	km/h	Local Time
1							
2							
3							
4							
5							
6							
7							
8							
9							
10							

22/06/2019 P = Pits In/Out - C = Lap Time Cancelled

These data/results cannot be reproduced, stored and/or transmitted in whole or in part by any manner of electronic, mechanical, photocopying, recording, broadcasting or otherwise now known or herein after developed without the previous express consent by the copyright owner, except for reproduction in daily press and regular printed publications on sale to the public within 60 days of the event related to those data/results and always provided that copyright symbol appears together as follows below.

© DORNA WSBK ORGANIZATION Srl 2019



Pata Riviera di Rimini Round, 21-23 June 2019

Chronological Analysis Free Practice 3rd Session

Misano Circuit Sic 58.4.226 m

3 / 3

1		29.513	35.246	27.804		220,0	9:35'55.099	2	52.974	33.840	39.884	31.915	2'38.613P	191,5	9:34'00.098
2	33.209	28.174	33.629	26.825	2'01.837	222,2	9:37'56.936	3	38.017	31.931	36.899	29.817	2'16.664	210,9	9:36'16.762
3	32.029	28.024	32.726	26.009	1'58.788	223,6	9:39'55.724	4	37.334	31.696	37.080	2'02.577	3'48.687P	213,9	9:40'05.449
4	31.504	27.097	32.596	26.113	1'57.310	226,4	9:41'53.034	5	55.083	31.035	36.186	29.842	2'32.146P	217,3	9:42'37.595
5	31.460	27.464	32.496	40.067	2'11.487P	225,5	9:44'04.521	6	35.804	30.428	35.719	29.347	2'11.298	219,5	9:44'48.893
								7	35.430	30.213	35.321	28.825	2'09.789	221,3	9:46'58.682
								8	34.949	29.612	35.534	28.678	2'08.773	218,6	9:49'07.455
								9	34.974	29.868	35.609	28.574	2'09.025	215,6	9:51'16.480

23° 27 M. CASADEI (1'58.011)

Lap	Seg.1	Seg.2	Seg.3	Seg.4	Lap Time	km/h	Local Time
1							9:33'00.615
2	53.400	31.781	36.156	29.282	2'30.619P	218,6	9:35'31.234
3	35.043	29.224	34.412	27.876	2'06.555	224,5	9:37'37.789
4	33.475	28.166	33.148	27.116	2'01.905	225,5	9:39'39.694
5	32.434	27.563	33.408	26.554	1'59.959	226,9	9:41'39.653
6	31.966	27.467	32.327	26.251	1'58.011	228,8	9:43'37.664

29° 86 A. BADOVINI

Lap	Seg.1	Seg.2	Seg.3	Seg.4	Lap Time	km/h	Local Time
1							9:38'42.571
			30.194	34.736	42.466		

24° 53 G. SCONZA (1'58.409)

Lap	Seg.1	Seg.2	Seg.3	Seg.4	Lap Time	km/h	Local Time
1							9:34'20.726
2	34.965	30.402	33.909	27.781	2'07.057	219,1	9:36'27.783
3	33.831	29.190	33.849	27.699	2'04.569	221,8	9:38'32.352
4	33.255	28.902	32.907	26.914	2'01.978	222,2	9:40'34.330
5	32.585	27.943	33.081	28.333	2'01.942	222,7	9:42'36.272
6	32.107	28.505	33.318	42.513	2'16.443P	222,2	9:44'52.715
7	1'49.779	29.440	32.035	26.963	3'18.217P	220,9	9:48'10.932
8	31.793	27.790	32.154	26.672	1'58.409	221,8	9:50'09.341

25° 13 R. ROLFO (1'59.642)

Lap	Seg.1	Seg.2	Seg.3	Seg.4	Lap Time	km/h	Local Time
1							9:34'32.069
2	56.539	35.344	38.055	58.837	3'08.775P	202,2	9:37'40.844
3	50.835	30.823	34.494	28.217	2'24.369P	216,9	9:40'05.213
4	33.358	29.277	33.344	27.191	2'03.170	218,2	9:42'08.383
5	32.841	28.726	33.311	27.233	2'02.111	220,9	9:44'10.494
6	32.420	28.768	32.983	27.184	2'01.355	221,3	9:46'11.849
7	32.117	28.500	32.720	26.815	2'00.152	222,7	9:48'12.001
8	32.095	28.206	32.657	26.684	1'59.642	221,3	9:50'11.643

26° 12 L. OTTAVIANI (1'59.828)

Lap	Seg.1	Seg.2	Seg.3	Seg.4	Lap Time	km/h	Local Time
1							9:34'55.655
2	1'03.325	35.071	42.063	1'03.173	3'23.632P	197,4	9:38'19.287
3	49.776	30.709	36.451	28.768	2'25.704P	214,3	9:40'44.991
4	32.902	28.393	33.484	27.105	2'01.884	224,5	9:42'46.875
5	32.840	28.353	33.827	28.191	2'03.211	224,5	9:44'50.086
6	34.746	29.353	34.161	27.618	2'05.878	224,5	9:46'55.964
7	32.479	27.831	33.065	26.631	2'00.006	223,6	9:48'55.970
8	32.099	28.399	32.758	26.572	1'59.828	225,5	9:50'55.798

27° 60 L. GABELLINI (2'00.353)

Lap	Seg.1	Seg.2	Seg.3	Seg.4	Lap Time	km/h	Local Time
1							9:34'20.770
2	53.458	34.063	37.480	30.845	2'35.846P	210,5	9:36'56.616
3	35.874	30.308	35.335	28.675	2'10.192	220,0	9:39'06.808
4	34.382	28.940	33.841	27.133	2'04.296	227,8	9:41'11.104
5	32.173	28.139	33.209	26.832	2'00.353	229,8	9:43'11.457
6	32.974	27.889	33.002	1'38.075	3'11.940P	228,3	9:46'23.397
7	47.226	29.026	33.549	27.034	2'16.835P	224,1	9:48'40.232
8	40.418	28.361	33.128	31.468	2'13.375	224,5	9:50'53.607

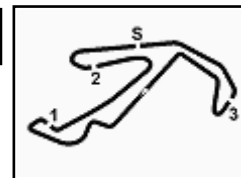
28° 65 M. CANDUCCI (2'08.773)

Lap	Seg.1	Seg.2	Seg.3	Seg.4	Lap Time	km/h	Local Time
1							9:31'21.485

22/06/2019 P = Pits In/Out - C = Lap Time Cancelled

These data/results cannot be reproduced, stored and/or transmitted in whole or in part by any manner of electronic, mechanical, photocopying, recording, broadcasting or otherwise now known or herein after developed without the previous express consent by the copyright owner, except for reproduction in daily press and regular printed publications on sale to the public within 60 days of the event related to those data/results and always provided that copyright symbol appears together as follows below.

© DORNA WSBK ORGANIZATION Srl 2019

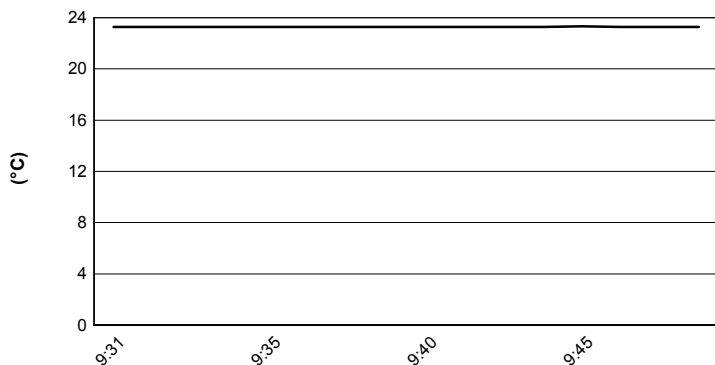


Pata Riviera di Rimini Round, 21-23 June 2019

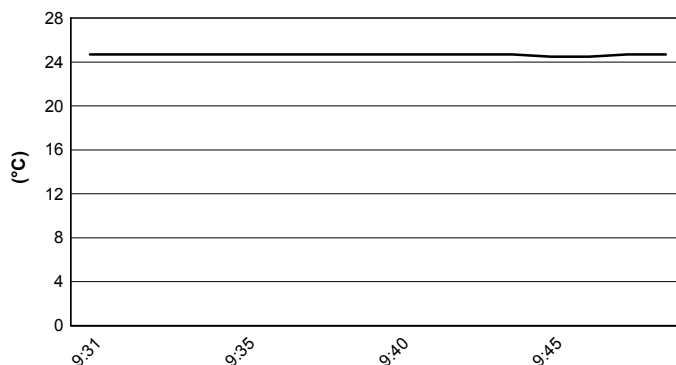
Weather Report Free Practice 3rd Session

Session started 09:30 - Session ended 9:52

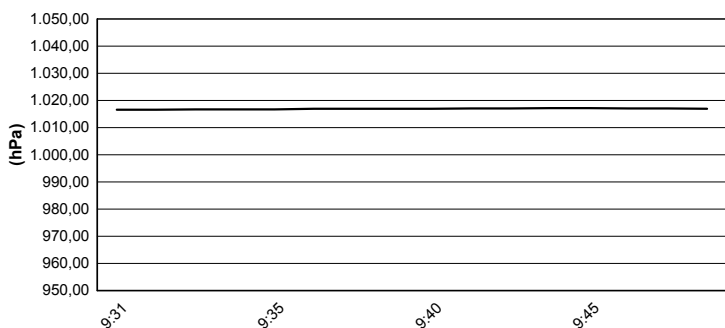
Air Temperature



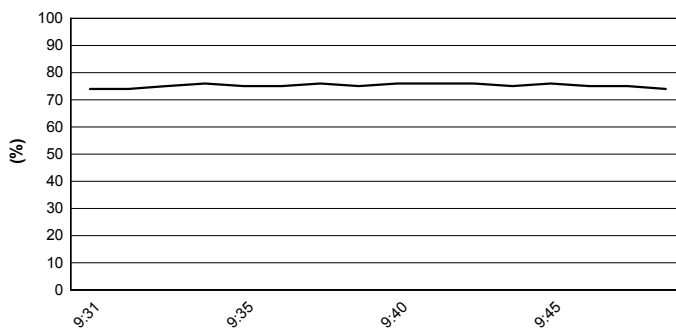
Track Temperature



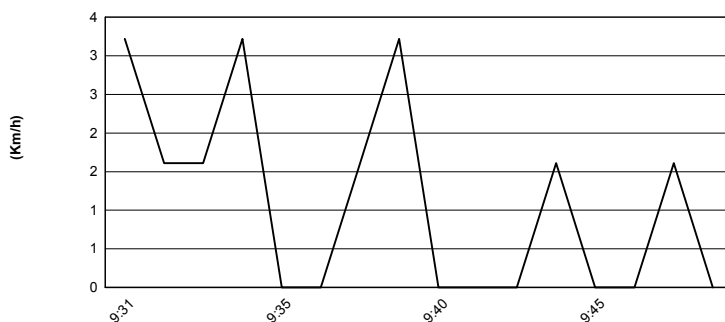
Air Pressure



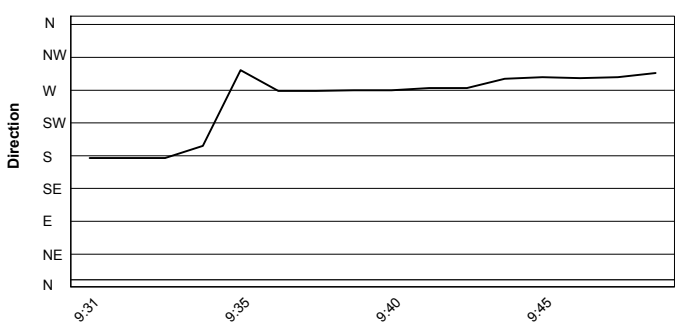
Humidity



Wind Speed



Wind Direction



22/06/2019

These data/results cannot be reproduced, stored and/or transmitted in whole or in part by any manner of electronic, mechanical, photocopying, recording, broadcasting or otherwise now known or herein after developed without the previous express consent by the copyright owner, except for reproduction in daily press and regular printed publications on sale to the public within 60 days of the event related to those data/results and always provided that copyright symbol appears together as follows below.

© DORNA WSBK ORGANIZATION Srl 2019