

DWO Phillip Island Official Test, 18-19 February 2019

World Superbike - Results Tuesday Free Practice 2

Phillip Island 4.445 m

1 / 2

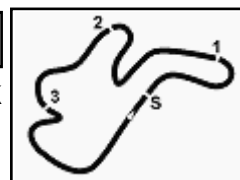
No.	Rider	Nat	Team	Bike	Class	Time	Gap	Rel.	Laps	Speed	
										Avg	Max
1	19 A. BAUTISTA	ESP	ARUBA.IT Racing - Ducati	Ducati Panigale V4 R		1'30.326			32	177,158	314,9
2	66 T. SYKES	GBR	BMW Motorrad WorldSBK Team	BMW S1000 RR		1'30.539	0.213	0.213	29	176,742	305,1
3	91 L. HASLAM	GBR	Kawasaki Racing Team WorldSBK	Kawasaki ZX-10RR		1'30.668	0.342	0.129	47	176,490	309,5
4	1 J. REA	GBR	Kawasaki Racing Team WorldSBK	Kawasaki ZX-10RR		1'30.722	0.396	0.054	27	176,385	313,0
5	54 T. RAZGATLIOGLU	TUR	Turkish Puccetti Racing	Kawasaki ZX-10RR	IND	1'30.840	0.514	0.118	36	176,156	306,8
6	22 A. LOWES	GBR	Pata Yamaha WorldSBK Team	Yamaha YZF R1		1'31.168	0.842	0.328	27	175,522	306,8
7	81 J. TORRES	ESP	Team Pedercini Racing	Kawasaki ZX-10RR	IND	1'31.224	0.898	0.056	40	175,414	301,7
8	60 M. VAN DER MARK	NED	Pata Yamaha WorldSBK Team	Yamaha YZF R1		1'31.293	0.967	0.069	33	175,282	305,9
9	36 L. MERCADO	ARG	Orelac Racing VerdNatura	Kawasaki ZX-10RR	IND	1'31.328	1.002	0.035	37	175,215	300,0
10	11 S. CORTESE	GER	GRT Yamaha WorldSBK	Yamaha YZF R1	IND	1'31.344	1.018	0.016	27	175,184	302,5
11	2 L. CAMIER	GBR	Moriwaki Althea Honda Team	Honda CBR1000RR		1'31.477	1.151	0.133	29	174,929	305,9
12	33 M. MELANDRI	ITA	GRT Yamaha WorldSBK	Yamaha YZF R1	IND	1'31.588	1.262	0.111	36	174,717	305,9
13	28 M. REITERBERGER	GER	BMW Motorrad WorldSBK Team	BMW S1000 RR		1'31.824	1.498	0.236	28	174,268	303,4
14	21 M. RINALDI	ITA	BARNI Racing Team	Ducati Panigale V4 R	IND	1'32.083	1.757	0.259	33	173,778	312,1
15	7 C. DAVIES	GBR	ARUBA.IT Racing - Ducati	Ducati Panigale V4 R		1'32.089	1.763	0.006	35	173,767	312,1
16	23 R. KIYONARI	JPN	Moriwaki Althea Honda Team	Honda CBR1000RR		1'32.388	2.062	0.299	31	173,204	303,4
17	17 T. HERFOSS	AUS	Penrite Honda Racing	Honda CBR1000RR	IND	1'33.953	3.627	1.565	24	170,319	295,1
18	50 E. LAVERTY	IRL	Team Goevenen	Ducati Panigale V4 R	IND				0		
19	52 A. DELBIANCO	ITA	Althea Mie Racing Team	Honda CBR1000RR	IND				0		

AIR	Humidity:	62%	Temp:	18°C
TRACK	Condition:	Dry	Temp:	34°C

19/02/2019 Start End The results are provisional until the end of the time limit for protests and appeals and the completion of the technical checks.
 13:40 15:42

These data/results cannot be reproduced, stored and/or transmitted in whole or in part by any manner of electronic, mechanical, photocopying, recording, broadcasting or otherwise now known or herein after developed without the previous express consent by the copyright owner, except for reproduction in daily press and regular printed publications on sale to the public within 60 days of the event related to those data/results and always provided that copyright symbol appears together as follows below.

© DORNA WSBK ORGANIZATION Srl 2019



DWO Phillip Island Official Test, 18-19 February 2019

World Superbike - Results Tuesday Free Practice 2

Session Highlights

Local Time	No. Rider	Description
13.23.06		DROPS on Rain in ALL Sectors
13.40.00		Start
14.09.14	11 S. CORTESE	Technical Problem - Turn 2
14.09.51	11 S. CORTESE	Re-joined
14.40.35		DROPS of RAIN in Sectors 1 & 2
14.50.38	54 T. RAZGATLIOGLU	On Asphalt - Re-Joined - Turn 4
15.07.52	22 A. LOWES	Crashed - Turn 4
15.15.24	19 A. BAUTISTA	Technical Problem - Turn 3
15.16.56		RED FLAG
15.42.16		End Of Session

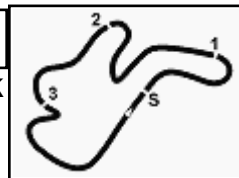
Fastest Laps Sequence

No.	Rider	Nat	Team	Bike	Local Time	Time	Gap	Avg
17	T. HERFOSS	AUS	Penrite Honda Racing	Honda CBR1000RR	13:43'41.278	1'35.302		167,908
91	L. HASLAM	GBR	Kawasaki Racing Team WorldSBK	Kawasaki ZX-10RR	13:44'00.892	1'32.005	-3.297	173,925
60	M. VAN DER MARK	NED	Pata Yamaha WorldSBK Team	Yamaha YZF R1	13:44'05.423	1'31.986	-0.019	173,961
22	A. LOWES	GBR	Pata Yamaha WorldSBK Team	Yamaha YZF R1	13:44'05.781	1'31.168	-0.818	175,522
19	A. BAUTISTA	ESP	ARUBA.IT Racing - Ducati	Ducati Panigale V4 R	13:45'01.173	1'30.326	-0.842	177,158

19/02/2019 Start End The results are provisional until the end of the time limit for protests and appeals and the completion of the technical checks.

These data/results cannot be reproduced, stored and/or transmitted in whole or in part by any manner of electronic, mechanical, photocopying, recording, broadcasting or otherwise now known or herein after developed without the previous express consent by the copyright owner, except for reproduction in daily press and regular printed publications on sale to the public within 60 days of the event related to those data/results and always provided that copyright symbol appears together as follows below.

© DORNA WSBK ORGANIZATION Srl 2019



Phillip Island 4.445 m

DWO Phillip Island Official Test, 18-19 February 2019

World Superbike - Tuesday Combined Results

No.	Rider	Nat	Team	Bike	Class	FP1	FP2	Time	Gap	Rel.	Laps
1	19 BAUTISTA Alvaro	ESP	ARUBA.IT Racing - Ducati	Ducati Panigale V4 R		1'30.303	1'30.326	1'30.303			93
2	66 SYKES Tom	GBR	BMW Motorrad WorldSBK Team	BMW S1000 RR		1'30.777	1'30.539	1'30.539	0.236	0.236	77
3	91 HASLAM Leon	GBR	Kawasaki Racing Team WorldSBK	Kawasaki ZX-10RR		1'30.947	1'30.668	1'30.668	0.365	0.129	106
4	1 REA Jonathan	GBR	Kawasaki Racing Team WorldSBK	Kawasaki ZX-10RR		1'30.761	1'30.722	1'30.722	0.419	0.054	80
5	33 MELANDRI Marco	ITA	GRT Yamaha WorldSBK	Yamaha YZF R1	IND	1'30.760	1'31.588	1'30.760	0.457	0.038	86
6	54 RAZGATLIOGLU Toprak	TUR	Turkish Puccetti Racing	Kawasaki ZX-10RR	IND	1'31.445	1'30.840	1'30.840	0.537	0.080	96
7	60 VAN DER MARK Michael	NED	Pata Yamaha WorldSBK Team	Yamaha YZF R1		1'30.911	1'31.293	1'30.911	0.608	0.071	88
8	11 CORTESE Sandro	GER	GRT Yamaha WorldSBK	Yamaha YZF R1	IND	1'31.077	1'31.344	1'31.077	0.774	0.166	77
9	22 LOWES Alex	GBR	Pata Yamaha WorldSBK Team	Yamaha YZF R1		1'31.146	1'31.168	1'31.146	0.843	0.069	91
10	81 TORRES Jordi	ESP	Team Pedercini Racing	Kawasaki ZX-10RR	IND	1'31.808	1'31.224	1'31.224	0.921	0.078	108
11	36 MERCADO Leandro	ARG	Orelac Racing VerdNatura	Kawasaki ZX-10RR	IND	1'31.942	1'31.328	1'31.328	1.025	0.104	90
12	28 REITERBERGER Markus	GER	BMW Motorrad WorldSBK Team	BMW S1000 RR		1'31.376	1'31.824	1'31.376	1.073	0.048	79
13	2 CAMIER Leon	GBR	Moriwaki Althea Honda Team	Honda CBR1000RR		1'31.443	1'31.477	1'31.443	1.140	0.067	91
14	7 DAVIES Chaz	GBR	ARUBA.IT Racing - Ducati	Ducati Panigale V4 R		1'31.796	1'32.089	1'31.796	1.493	0.353	85
15	23 KIYONARI Ryuichi	JPN	Moriwaki Althea Honda Team	Honda CBR1000RR		1'31.860	1'32.388	1'31.860	1.557	0.064	97
16	50 LAVERTY Eugene	IRL	Team GoEleven	Ducati Panigale V4 R	IND	1'31.986		1'31.986	1.683	0.126	46
17	21 RINALDI Michael Ruben	ITA	BARNI Racing Team	Ducati Panigale V4 R	IND	1'32.428	1'32.083	1'32.083	1.780	0.097	96
18	52 DELBIANCO Alessandro	ITA	Althea Mie Racing Team	Honda CBR1000RR	IND	1'32.979		1'32.979	2.676	0.896	34
19	17 HERFOSS Troy	AUS	Penrite Honda Racing	Honda CBR1000RR	IND	1'33.130	1'33.953	1'33.130	2.827	0.151	59

19/02/2019

These data/results cannot be reproduced, stored and/or transmitted in whole or in part by any manner of electronic, mechanical, photocopying, recording, broadcasting or otherwise now known or herein after developed without the previous express consent by the copyright owner, except for reproduction in daily press and regular printed publications on sale to the public within 60 days of the event related to those data/results and always provided that copyright symbol appears together as follows below.

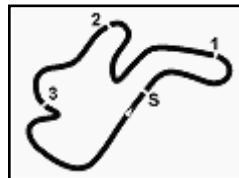
© DORNA WSBK ORGANIZATION Srl 2019

FIOR PERUGIA TIMING


Official Tyre Supplier



Official Timekeeper



Phillip Island 4.445 m

DWO Phillip Island Official Test, 18-19 February 2019

World Superbike - Ideal Times Tuesday Free Practice 2

No.	Rider	Nat	Bike	Seg. 1	Seg. 2	Seg. 3	Seg. 4	Ideal Time			
				Diff. 1	Diff. 2	Diff. 3	Diff. 4	Best Lap	Pos.	Diff.	
1	19 A. BAUTISTA	ESP	Ducati Panigale V4 R	21.663 +0.144	26.099	17.247 +0.149	25.024	1'30.033 1'30.326	1	0.293	
2	66 T. SYKES	GBR	BMW S1000 RR	21.688	26.137 +0.005	17.362 +0.010	25.337	1'30.524 1'30.539	2	0.015	
3	91 L. HASLAM	GBR	Kawasaki ZX-10RR	21.749	26.090 +0.042	17.383 +0.053	25.351	1'30.573 1'30.668	3	0.095	
4	1 J. REA	GBR	Kawasaki ZX-10RR	21.640 +0.031	26.197 +0.068	17.403	25.383	1'30.623 1'30.722	4	0.099	
5	54 T. RAZGATLIOGLU	TUR	Kawasaki ZX-10RR	21.770	26.089	17.463 +0.013	25.486 +0.019	1'30.808 1'30.840	5	0.032	
6	60 M. VAN DER MARK	NED	Yamaha YZF R1	21.736 +0.171	26.360 +0.024	17.414	25.588	1'31.098 1'31.293	8	0.195	
7	22 A. LOWES	GBR	Yamaha YZF R1	21.874 +0.027	26.187	17.429	25.644 +0.007	1'31.134 1'31.168	6	0.034	
8	11 S. CORTESE	GER	Yamaha YZF R1	21.757	26.533 +0.078	17.492 +0.003	25.441 +0.040	1'31.223 1'31.344	10	0.121	
9	81 J. TORRES	ESP	Kawasaki ZX-10RR	21.910	26.348	17.512	25.454	1'31.224 1'31.224	7		
10	36 L. MERCADO	ARG	Kawasaki ZX-10RR	21.914 +0.006	26.446 +0.065	17.438	25.459	1'31.257 1'31.328	9	0.071	
11	2 L. CAMIER	GBR	Honda CBR1000RR	21.810 +0.074	26.333	17.520 +0.092	25.648	1'31.311 1'31.477	11	0.166	
12	33 M. MELANDRI	ITA	Yamaha YZF R1	21.740 +0.076	26.362 +0.105	17.621 +0.036	25.637 +0.011	1'31.360 1'31.588	12	0.228	
13	28 M. REITERBERGER	GER	BMW S1000 RR	21.955	26.470	17.546 +0.047	25.730 +0.076	1'31.701 1'31.824	13	0.123	
14	7 C. DAVIES	GBR	Ducati Panigale V4 R	22.008	26.359 +0.025	17.761 +0.023	25.757 +0.156	1'31.885 1'32.089	15	0.204	
15	21 M. RINALDI	ITA	Ducati Panigale V4 R	22.005	26.635	17.673 +0.006	25.701 +0.063	1'32.014 1'32.083	14	0.069	
16	23 R. KIYONARI	JPN	Honda CBR1000RR	22.049 +0.171	26.685 +0.014	17.700	25.769	1'32.203 1'32.388	16	0.185	
17	17 T. HERFOSS	AUS	Honda CBR1000RR	22.478	27.005	17.981	26.449 +0.040	1'33.913 1'33.953	17	0.040	
	50 E. LAVERTY	IRL	Ducati Panigale V4 R	One or more sectors missing							
	52 A. DELBIANCO	ITA	Honda CBR1000RR	One or more sectors missing							
Overall Ideal Time				21.640	26.089	17.247	25.024	1'30.000			

19/02/2019

These data/results cannot be reproduced, stored and/or transmitted in whole or in part by any manner of electronic, mechanical, photocopying, recording, broadcasting or otherwise now known or herein after developed without the previous express consent by the copyright owner, except for reproduction in daily press and regular printed publications on sale to the public within 60 days of the event related to those data/results and always provided that copyright symbol appears together as follows below.

© DORNA WSBK ORGANIZATION Srl 2019

PIR PERUGIA TIMING



Official Tyre Supplier



Official Timekeeper

DWO Phillip Island Official Test, 18-19 February 2019 World Superbike - Best Sectors & Speed Tuesday Free Practice 2

Phillip Island 4.445 m

BEST LAP		
1	19 A. BAUTISTA	Ducati Panigale V4 R 1'30.326
2	66 T. SYKES	BMW S1000 RR 1'30.539
3	91 L. HASLAM	Kawasaki ZX-10RR 1'30.668
4	1 J. REA	Kawasaki ZX-10RR 1'30.722
5	54 T. RAZGATLIOGLU	Kawasaki ZX-10RR 1'30.840
6	22 A. LOWES	Yamaha YZF R1 1'31.168
7	81 J. TORRES	Kawasaki ZX-10RR 1'31.224
8	60 M. VAN DER MARK	Yamaha YZF R1 1'31.293
9	36 L. MERCADO	Kawasaki ZX-10RR 1'31.328
10	11 S. CORTESE	Yamaha YZF R1 1'31.344
11	2 L. CAMIER	Honda CBR1000RR 1'31.477
12	33 M. MELANDRI	Yamaha YZF R1 1'31.588
13	28 M. REITERBERGER	BMW S1000 RR 1'31.824
14	21 M. RINALDI	Ducati Panigale V4 R 1'32.083
15	7 C. DAVIES	Ducati Panigale V4 R 1'32.089
16	23 R. KIYONARI	Honda CBR1000RR 1'32.388
17	17 T. HERFOSS	Honda CBR1000RR 1'33.953
18	50 E. LAVERTY	Ducati Panigale V4 R
19	52 A. DELBIANCO	Honda CBR1000RR

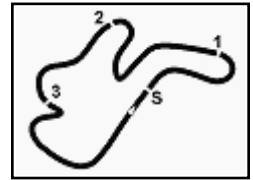
SPEED		
1	19 A. BAUTISTA	Ducati Panigale V4 R 314,9
2	1 J. REA	Kawasaki ZX-10RR 313,0
3	7 C. DAVIES	Ducati Panigale V4 R 312,1
4	21 M. RINALDI	Ducati Panigale V4 R 312,1
5	91 L. HASLAM	Kawasaki ZX-10RR 309,5
6	22 A. LOWES	Yamaha YZF R1 306,8
7	54 T. RAZGATLIOGLU	Kawasaki ZX-10RR 306,8
8	60 M. VAN DER MARK	Yamaha YZF R1 305,9
9	33 M. MELANDRI	Yamaha YZF R1 305,9
10	2 L. CAMIER	Honda CBR1000RR 305,9
11	66 T. SYKES	BMW S1000 RR 305,1
12	23 R. KIYONARI	Honda CBR1000RR 303,4
13	28 M. REITERBERGER	BMW S1000 RR 303,4
14	11 S. CORTESE	Yamaha YZF R1 302,5
15	81 J. TORRES	Kawasaki ZX-10RR 301,7
16	36 L. MERCADO	Kawasaki ZX-10RR 300,0
17	17 T. HERFOSS	Honda CBR1000RR 295,1

SEG. 1		SEG. 2		SEG. 3		SEG. 4	
1	1 J. REA 21.640	1	54 T. RAZGATLIOGLU 26.089	1	19 A. BAUTISTA 17.247	1	19 A. BAUTISTA 25.024
2	19 A. BAUTISTA 21.663	2	91 L. HASLAM 26.090	2	66 T. SYKES 17.362	2	66 T. SYKES 25.337
3	66 T. SYKES 21.688	3	19 A. BAUTISTA 26.099	3	91 L. HASLAM 17.383	3	91 L. HASLAM 25.351
4	60 M. VAN DER MARK 21.736	4	66 T. SYKES 26.137	4	1 J. REA 17.403	4	1 J. REA 25.383
5	33 M. MELANDRI 21.740	5	22 A. LOWES 26.187	5	60 M. VAN DER MARK 17.414	5	11 S. CORTESE 25.441
6	91 L. HASLAM 21.749	6	1 J. REA 26.197	6	22 A. LOWES 17.429	6	81 J. TORRES 25.454
7	11 S. CORTESE 21.757	7	2 L. CAMIER 26.333	7	36 L. MERCADO 17.438	7	36 L. MERCADO 25.459
8	54 T. RAZGATLIOGLU 21.770	8	81 J. TORRES 26.348	8	54 T. RAZGATLIOGLU 17.463	8	54 T. RAZGATLIOGLU 25.486
9	2 L. CAMIER 21.810	9	7 C. DAVIES 26.359	9	11 S. CORTESE 17.492	9	60 M. VAN DER MARK 25.588
10	22 A. LOWES 21.874	10	60 M. VAN DER MARK 26.360	10	81 J. TORRES 17.512	10	33 M. MELANDRI 25.637
11	81 J. TORRES 21.910	11	33 M. MELANDRI 26.362	11	2 L. CAMIER 17.520	11	22 A. LOWES 25.644
12	36 L. MERCADO 21.914	12	36 L. MERCADO 26.446	12	28 M. REITERBERGER 17.546	12	2 L. CAMIER 25.648
13	28 M. REITERBERGER 21.955	13	28 M. REITERBERGER 26.470	13	33 M. MELANDRI 17.621	13	21 M. RINALDI 25.701
14	21 M. RINALDI 22.005	14	11 S. CORTESE 26.533	14	21 M. RINALDI 17.673	14	28 M. REITERBERGER 25.730
15	7 C. DAVIES 22.008	15	21 M. RINALDI 26.635	15	23 R. KIYONARI 17.700	15	7 C. DAVIES 25.757
16	23 R. KIYONARI 22.049	16	23 R. KIYONARI 26.685	16	7 C. DAVIES 17.761	16	23 R. KIYONARI 25.769
17	17 T. HERFOSS 22.478	17	17 T. HERFOSS 27.005	17	17 T. HERFOSS 17.981	17	17 T. HERFOSS 26.449

19/02/2019

These data/results cannot be reproduced, stored and/or transmitted in whole or in part by any manner of electronic, mechanical, photocopying, recording, broadcasting or otherwise now known or herein after developed without the previous express consent by the copyright owner, except for reproduction in daily press and regular printed publications on sale to the public within 60 days of the event related to those data/results and always provided that copyright symbol appears together as follows below.

© DORNA WSBK ORGANIZATION Srl 2019



DWO Phillip Island Official Test, 18-19 February 2019 World Superbike - Chronological Analysis Tuesday Free Practice 2

Phillip Island 4.445 m

1 / 5

1° 19 A. BAUTISTA (1'30.326)							
Lap	Seg.1	Seg.2	Seg.3	Seg.4	Lap Time	km/h	Local Time
1							13:41'46.282
2	33.172	27.680	18.214	25.499	1'44.565P		13:43'30.847
3	21.807	26.099	17.396	25.024	1'30.326	310,3	13:45'01.173
4	21.800	26.188	17.389	25.133	1'30.510	313,0	13:46'31.683
5	21.759	26.240	17.358	25.300	1'30.657	313,0	13:48'02.340
6	21.886	26.390	17.437	25.156	1'30.869	313,0	13:49'33.209
7	21.806	26.372	17.476	25.132	1'30.786	312,1	13:51'03.995
8	21.892	26.438	17.464	25.239	1'31.033	314,0	13:52'35.028
9	22.722	28.950	18.500	1'19.082	2'29.254P	312,1	13:55'04.282
10	33.457	27.433	18.229	35'49.032	37'08.151P		14:32'12.443
11	35.574	27.056	17.387	25.437	1'45.454P		14:33'57.887
12	21.823	26.133	17.365	25.120	1'30.441	311,2	14:35'28.328
13	21.663	26.190	17.320	25.312	1'30.485	310,3	14:36'58.813
14	21.736	26.268	17.334	25.265	1'30.603	309,5	14:38'29.416
15	25.245	31.525	20.700	6'50.476	8'07.946P	306,8	14:46'37.362
16	34.191	26.849	17.511	25.358	1'43.909P		14:48'21.271
17	21.857	26.259	17.247	25.102	1'30.465	308,6	14:49'51.736
18	21.744	26.280	17.324	25.230	1'30.578	311,2	14:51'22.314
19	21.707	26.294	17.316	25.323	1'30.640	312,1	14:52'52.954
20	21.928	26.188	17.319	25.308	1'30.743	312,1	14:54'23.697
21	21.712	26.215	17.333	25.273	1'30.533	313,0	14:55'54.230
22	21.743	26.347	17.329	25.344	1'30.763	312,1	14:57'24.993
23	21.799	26.612	17.389	25.388	1'31.188	314,0	14:58'56.181
24	21.793	26.401	17.352	25.408	1'30.954	312,1	15:00'27.135
25	21.807	26.257	17.370	25.322	1'30.756	314,0	15:01'57.891
26	21.908	26.343	17.357	25.336	1'30.944	314,0	15:03'28.835
27	21.843	26.393	17.593	25.421	1'31.250	313,0	15:05'00.085
28	21.815	26.570	17.444	25.512	1'31.341	314,9	15:06'31.426
29	21.937	26.464	17.528	25.637	1'31.566	313,0	15:08'02.992
30	22.033	26.673	17.597	25.637	1'31.940	312,1	15:09'34.932
31	22.191	26.790	17.604	25.668	1'32.253	313,0	15:11'07.185
32	22.189	26.734	17.909	25.857	1'32.689	312,1	15:12'39.874
33	22.312	26.922	17.835	25.904	1'32.973	313,0	15:14'12.847

26	21.768	26.159	17.422	25.460	1'30.809	299,2	15:35'03.225
27	22.568	31.304	21.512	26.027	1'41.411	299,2	15:36'44.636
28	21.688	26.142	17.372	25.337	1'30.539	301,7	15:38'15.175
29	23.693	27.854	17.897	27.511	1'36.955	305,1	15:39'52.130
30	24.362	27.063	17.827	26.257	1'35.509	290,3	15:41'27.639

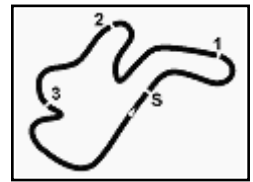
3° 91 L. HASLAM (1'30.668)							
Lap	Seg.1	Seg.2	Seg.3	Seg.4	Lap Time	km/h	Local Time
1							13:40'37.863
2	36.136	28.637	19.388	26.863	1'51.024P		13:42'28.887
3	22.124	26.451	17.724	25.706	1'32.005	302,5	13:44'00.892
4	22.158	26.489	17.789	4'37.679	5'44.115P	303,4	13:49'45.007
5	36.707	31.785	19.806	27.027	1'55.325P		13:51'40.332
6	21.931	26.216	17.443	25.505	1'31.095	306,8	13:53'11.427
7	21.749	26.383	17.605	25.488	1'31.225	309,5	13:54'42.652
8	21.928	26.825	18.092	26.538	1'33.383	309,5	13:56'16.035
9	22.017	26.358	17.594	25.567	1'31.536	304,2	13:57'47.571
10	21.944	26.090	17.585	27.385	1'33.004	305,9	13:59'20.575
11	21.956	26.391	17.712	25.743	1'31.802	305,1	14:00'52.377
12	21.993	26.398	17.585	25.565	1'31.541	305,1	14:02'23.918
13	22.039	26.412	17.685	25.658	1'31.794	304,4	14:03'55.712
14	21.913	26.366	17.508	25.645	1'31.432	304,2	14:05'27.144
15	22.050	28.955	18.930	11'28.384	12'38.319P	304,2	14:18'05.463
16	35.881	27.730	18.544	26.561	1'48.716P		14:19'54.179
17	21.865	26.205	17.458	25.550	1'31.078	304,2	14:21'25.257
18	21.995	27.499	19.783	26.830	1'36.107	301,7	14:23'01.364
19	21.930	26.328	17.501	6'24.225	7'29.984P	305,9	14:30'31.348
20	36.168	29.382	18.300	26.497	1'50.347P		14:32'21.695
21	21.878	26.291	17.455	25.554	1'31.178	305,1	14:33'52.873
22	21.918	26.248	17.536	25.618	1'31.320	305,9	14:35'24.193
23	22.062	26.261	18.458	29.211	1'35.992	302,5	14:37'00.185
24	21.883	26.242	17.523	25.581	1'31.229	304,2	14:38'31.414
25	24.498	30.994	20.708	7'48.991	9'05.191P	304,2	14:47'36.605
26	37.024	28.572	18.517	26.578	1'50.691P		14:49'27.296
27	21.908	26.446	17.562	25.578	1'31.494	302,5	14:50'58.790
28	21.878	26.187	17.531	25.704	1'31.300	305,1	14:52'30.090
29	23.099	28.574	18.813	6'33.018	7'43.504P	305,1	15:00'13.594
30	40.647	29.496	18.345	26.824	1'55.312P		15:02'08.906
31	21.810	26.202	17.383	25.537	1'30.932	305,1	15:03'39.838
32	21.810	26.194	17.449	25.668	1'31.121	303,4	15:05'10.959
33	21.991	26.332	17.605	25.614	1'31.542	304,2	15:06'42.501
34	21.905	26.303	17.550	25.661	1'31.419	303,4	15:08'13.920
35	21.864	26.406	17.707	25.664	1'31.641	304,2	15:09'45.561
36	21.900	26.405	17.628	25.735	1'31.668	303,4	15:11'17.229
37	21.997	26.288	17.575	25.841	1'31.701	303,4	15:12'48.930
38	22.224	26.543	17.658	25.837	1'32.262	303,4	15:14'21.192
39	21.929	26.393	17.663	25.697	1'31.682	304,2	15:15'52.874
40	22.022	26.462	17.614	10'30.513	11'36.611P	305,1	15:27'29.485
41	38.592	29.235	19.473	28.848	1'56.148P		15:29'25.633
42	21.819	26.106	17.754	26.883	1'32.562	305,9	15:30'58.195
43	24.663	32.116	18.431	26.048	1'41.258	305,1	15:32'39.453
44	21.749	26.132	17.436	25.351	1'30.668	304,2	15:34'10.121
45	21.900	26.169	17.513	25.694	1'31.276	305,9	15:35'41.397
46	21.885	29.669	19.530	29.990	1'41.074	305,1	15:37'22.471
47	21.880	26.380	17.483	29.260	1'35.003	305,9	15:38'57.474
48	23.508	28.228	18.929	27.934	1'38.599	272,0	15:40'36.073

4° 1 J. REA (1'30.722)							
Lap	Seg.1	Seg.2	Seg.3	Seg.4	Lap Time	km/h	Local Time
1							13:46'45.133
2	33.983	27.894	18.489	26.412	1'46.778P		13:48'31.911
3	21.801	26.261	17.521	25.500	1'31.083	306,8	13:50'02.994
4	22.260	26.747	17.900	28.824	1'35.731	307,7	13:51'38.725

19/02/2019 P = Pits In/Out - C = Lap Time Cancelled

These data/results cannot be reproduced, stored and/or transmitted in whole or in part by any manner of electronic, mechanical, photocopying, recording, broadcasting or otherwise now known or herein after developed without the previous express consent by the copyright owner, except for reproduction in daily press and regular printed publications on sale to the public within 60 days of the event related to those data/results and always provided that copyright symbol appears together as follows below.

© DORNA WSBK ORGANIZATION Srl 2019



DWO Phillip Island Official Test, 18-19 February 2019 World Superbike - Chronological Analysis Tuesday Free Practice 2

Phillip Island 4.445 m

2 / 5

Lap	Seg.1	Seg.2	Seg.3	Seg.4	Lap Time	km/h	Local Time
5	21.733	26.472	17.631	25.685	1'31.521	309,5	13:53'10.246
6	21.778	26.261	17.523	25.558	1'31.120	310,3	13:54'41.366
7	25.647	28.692	18.349	26.278	1'38.966	311,2	13:56'20.332
8	22.188	27.201	19.019	24'04.211	25'12.619P	309,5	14:21'32.951
9	37.251	27.545	17.921	26.345	1'49.062P		14:23'22.013
10	21.752	26.399	17.530	25.424	1'31.105	308,6	14:24'53.118
11	21.665	26.295	17.514	25.489	1'30.963	308,6	14:26'24.081
12	21.744	26.586	17.669	26.028	1'32.027	310,3	14:27'56.108
13	21.698	26.353	17.556	25.727	1'31.334	309,5	14:29'27.442
14	21.766	26.333	17.595	25.565	1'31.259	307,7	14:30'58.701
15	23.428	28.796	18.663	34'49.694	36'00.581P	307,7	15:06'59.282
16	33.165	27.239	17.927	26.041	1'44.372P		15:08'43.654
17	21.885	26.297	17.567	25.543	1'31.292	307,7	15:10'14.946
18	21.640	26.347	17.452	25.446	1'30.885	309,5	15:11'45.831
19	23.175	27.077	17.752	25.699	1'33.703	307,7	15:13'19.534
20	21.830	26.455	17.592	25.956	1'31.833	309,5	15:14'51.367
21	21.795	26.464	17.613	25.718	1'31.590	309,5	15:16'22.957
22	21.840	28.881	23.627	12'58.643	14'12.991P	306,8	15:30'35.948
23	33.289	27.101	17.771	26.024	1'44.185P		15:32'20.133
24	21.718	26.197	17.530	25.523	1'30.968	307,7	15:33'51.101
25	21.674	26.247	17.499	25.548	1'30.968	310,3	15:35'22.069
26	22.214	33.101	18.465	25.709	1'39.489	309,5	15:37'01.558
27	21.834	26.926	17.660	29.269	1'35.689	313,0	15:38'37.247
28	21.671	26.265	17.403	25.383	1'30.722	311,2	15:40'07.969

6°								22 A. LOWES (1'31.168)			
Lap	Seg.1	Seg.2	Seg.3	Seg.4	Lap Time	km/h	Local Time				
1							13:40'44.971				
2	35.557	30.319	17.867	25.899	1'49.642P		13:42'34.613				
3	21.901	26.187	17.429	25.651	1'31.168	306,8	13:44'05.781				
4	23.012	27.084	18.675	5'23.694	6'32.465P	306,8	13:50'38.246				
5	34.170	27.024	17.956	26.349	1'45.499P		13:52'23.745				
6	22.027	26.658	17.668	25.934	1'32.287	303,4	13:53'56.032				
7	21.899	30.426	19.012	16'12.443	17'23.780P	305,1	14:11'19.812				
8	33.838	27.255	17.966	26.230	1'45.289P		14:13'05.101				
9	21.934	26.365	17.636	25.879	1'31.814	304,2	14:14'36.915				
10	21.999	26.391	17.632	25.761	1'31.783	305,9	14:16'08.698				
11	21.904	28.328	18.005	26.140	1'34.377	306,8	14:17'43.075				
12	22.208	26.698	17.738	25.927	1'32.571	305,1	14:19'15.646				
13	22.050	26.584	17.717	25.972	1'32.323	305,9	14:20'47.969				
14	23.869	29.060	19.363	15'21.008	16'33.300P	305,9	14:33'00.269				
15	35.747	27.593	18.772	26.411	1'48.523P		14:39'09.792				
16	27.414	32.684	20.871	7'32.220	8'53.189P	288,8	14:48'02.981				
17	36.709	30.468	17.656	25.758	1'50.591P		14:49'53.572				
18	22.022	26.546	17.581	25.644	1'31.793	304,2	14:51'25.365				
19	22.004	26.421	17.543	25.703	1'31.671	305,1	14:52'57.036				
20	21.874	26.311	17.536	25.727	1'31.448	305,1	14:54'28.484				
21	21.919	26.287	17.682	25.811	1'31.699	305,9	14:56'00.183				
22	21.874	26.395	17.748	25.963	1'31.980	304,2	14:57'32.163				
23	22.214	27.409	24.079	26.943	1'40.645	305,9	14:59'12.808				
24	22.076	26.391	17.667	25.793	1'31.927	304,2	15:00'44.735				
25	21.942	26.423	17.601	25.808	1'31.774	305,1	15:02'16.509				
26	21.899	26.445	17.673	25.802	1'31.819	305,9	15:03'48.328				
27	21.977	26.519	17.685	25.807	1'31.988	304,2	15:05'20.316				
28	21.954	26.537	17.719	25.820	1'32.030	305,9	15:06'52.346				

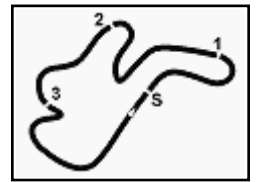
5°								54 T. RAZGATLIOGLU (1'30.840)			
Lap	Seg.1	Seg.2	Seg.3	Seg.4	Lap Time	km/h	Local Time				
1							13:43'46.384				
2	38.024	28.077	20.312	28.297	1'54.710P		13:45'41.094				
3	25.280	27.698	17.910	25.849	1'36.737	299,2	13:47'17.831				
4	22.143	26.560	17.789	25.780	1'32.272	299,2	13:48'50.103				
5	22.180	26.553	17.710	25.811	1'32.254	300,8	13:50'22.357				
6	22.179	26.474	17.659	25.765	1'32.077	301,7	13:51'54.434				
7	22.233	26.504	17.665	25.776	1'32.178	299,2	13:53'26.612				
8	22.261	26.465	17.769	25.746	1'32.241	300,8	13:54'58.853				
9	22.137	26.564	17.748	25.794	1'32.243	302,5	13:56'31.096				
10	23.588	30.513	18.732	25'33.137	26'45.970P	302,5	14:23'17.066				
11	32.709	27.346	18.147	26.070	1'44.272P		14:25'01.338				
12	22.175	26.698	17.629	25.831	1'32.333	300,0	14:26'33.671				
13	22.382	27.858	18.185	12'14.120	13'22.545P	302,5	14:39'56.216				
14	36.119	33.534	22.203	4'48.500	6'20.356P		14:46'16.572				
15	35.006	28.287	18.477	26.375	1'48.145P		14:48'04.717				
16	22.543	27.787	17.868	26.048	1'34.246	297,5	14:49'38.963				
17	22.106	37.392	22.728	25.771	1'47.997	298,3	14:51'26.960				
18	22.011	26.445	17.488	25.659	1'31.603	301,7	14:52'58.563				
19	21.954	26.473	17.463	25.723	1'31.613	301,7	14:54'30.176				
20	21.994	26.409	17.646	25.742	1'31.791	302,5	14:56'01.967				
21	22.023	26.332	17.560	25.718	1'31.633	300,0	14:57'33.600				
22	22.071	26.405	17.524	25.762	1'31.762	303,4	14:59'05.362				
23	22.128	26.466	17.622	25.789	1'32.005	300,8	15:00'37.367				
24	22.131	29.449	17.600	25.829	1'35.009	300,8	15:02'12.376				
25	21.943	26.754	17.706	25.805	1'32.208	305,1	15:03'44.584				
26	21.938	26.604	17.722	25.645	1'31.909	304,2	15:05'16.493				
27	21.924	26.522	17.611	25.808	1'31.865	306,8	15:06'48.358				
28	22.170	26.582	17.592	25.825	1'32.169	300,8	15:08'20.527				
29	22.083	26.641	17.839	25.861	1'32.424	300,0	15:09'52.951				
30	23.232	31.127	19.121	19'33.185	20'46.665P	298,3	15:30'39.616				
31	32.879	26.812	17.648	25.486	1'42.825P		15:32'22.441				
32	21.770	26.089	17.476	25.505	1'30.840	300,8	15:33'53.281				
33	21.892	26.158	17.507	25.567	1'31.124	303,4	15:35'24.405				
34	22.011	26.444	17.521	25.732	1'31.708	302,5	15:36'56.113				
35	21.963	26.461	17.561	25.688	1'31.673	302,5	15:38'27.786				
36	22.175	26.502	17.528	25.649	1'31.854	302,5	15:39'59.640				
37	22.069	26.508	17.559	25.803	1'31.939	300,0	15:41'31.579				

7°								81 J. TORRES (1'31.224)			
Lap	Seg.1	Seg.2	Seg.3	Seg.4	Lap Time	km/h	Local Time				
1							13:41'43.111				
2	35.725	28.171	18.324	26.187	1'48.407P		13:43'31.518				
3	22.532	26.912	17.837	25.946	1'33.227	295,9	13:45'04.745				
4	22.395	26.741	18.108	26.064	1'33.308	295,9	13:46'38.053				
5	24.464	33.528	17.907	26.028	1'41.927	295,1	13:48'19.980				
6	22.384	29.550	22.988	26.357	1'41.279	292,7	13:50'01.259				
7	23.045	27.896	17.912	26.100	1'34.953	292,7	13:51'36.212				
8	22.344	26.600	17.754	25.831	1'32.529	295,9	13:53'08.741				
9	22.302	28.900	17.743	25.701	1'34.646	295,9	13:54'43.387				
10	22.163	26.697	17.734	26.643	1'33.237	301,7	13:56'16.624				
11	22.336	26.637	17.895	25.691	1'32.559	301,7	13:57'49.183				
12	22.209	26.615	17.650	25.711	1'32.185	298,3	13:59'21.368				
13	22.174	26.743	19.657	18'11.546	19'20.120P	299,2	14:18'41.488				
14	36.801	27.839	17.987	25.993	1'48.620P		14:20'30.108				
15	22.279	26.645	17.664	25.638	1'32.226	297,5	14:22'02.334				
16	22.025	26.451	17.654	25.651	1'31.781	299,2	14:23'34.115				
17	22.102	26.620	17.595	25.697	1'32.014	297,5	14:25'06.129				
18	22.121	26.625	17.614	25.769	1'32.129	295,1	14:26'38.258				
19	23.307	27.094	17.957	11'19.684	12'28.042P	294,3	14:39'06.300				
20	38.950	33.869	22.671	8'51.058	10'26.548P		14:49'32.848				
21	35.994	31.672	23.328	26.735	1'57.729P		14:51'30.577				
22	22.613	26.966	17.819	26.074	1'33.472	296,7	14:53'04.049				
23	22.207	26.804	17.598	25.685	1'32.294	295,9	14:54'36.343				
24	22.130	26.532	17.653	25.798	1'32.113	297,5	14:56'08.456				
25	22.198	26.609	18.093	25.951	1'32.851	296,7	14:57'41.307				
26	22.124	26.534	17.709	25.764	1'32.131	297,5	14:59'13.438				
27	22.535	27.937	18.348	12'24.791	13'33.611P	299,2	15:12'47.049				
28	36.376	30.091	18.257	52.561	2'17.285P		15:15'04.334				
29	34.840	27.506	17.852	25.825	1'46.023P		15:16'50.357				

19/02/2019 P = Pits In/Out - C = Lap Time Cancelled

These data/results cannot be reproduced, stored and/or transmitted in whole or in part by any manner of electronic, mechanical, photocopying, recording, broadcasting or otherwise now known or herein after developed without the previous express consent by the copyright owner, except for reproduction in daily press and regular printed publications on sale to the public within 60 days of the event related to those data/results and always provided that copyright symbol appears together as follows below.

© DORNA WSBK ORGANIZATION Srl 2019



DWO Phillip Island Official Test, 18-19 February 2019 World Superbike - Chronological Analysis Tuesday Free Practice 2

Phillip Island 4.445 m

3 / 5

30	23.088	1'12.554	19.201	2'54.261	4'49.104P	294,3	15:21'39.461	12	25.017	36.670	23.274	29.563	1'54.524	291,1	14:06'57.181
31	33.747	27.183	19.123	26.560	1'46.613P		15:23'26.074	13	22.021	26.678	17.819	25.835	1'32.353	296,7	14:08'29.534
32	22.591	26.807	17.632	25.553	1'32.583	292,7	15:24'58.657	14	23.564	27.522	18.031	19'36.170	20'45.287P	257,8	14:29'14.821
33	22.095	26.468	17.663	25.688	1'31.914	296,7	15:26'30.571	15	35.784	26.986	17.810	26.084	1'46.664P		14:31'01.485
34	22.132	26.538	17.544	25.663	1'31.877	295,1	15:28'02.448	16	22.292	26.761	17.728	25.789	1'32.570	295,1	14:32'34.055
35	22.135	26.527	17.754	25.764	1'32.180	296,7	15:29'34.628	17	22.194	26.748	17.761	25.735	1'32.438	297,5	14:34'06.493
36	22.264	27.426	18.360	2'43.308	3'51.358P	295,1	15:33'25.986	18	22.293	26.672	17.755	25.795	1'32.515	298,3	14:35'39.008
37	35.477	28.398	19.737	29.049	1'52.661P		15:35'18.647	19	22.384	26.650	17.796	25.995	1'32.825	292,7	14:37'11.833
38	22.039	26.487	17.568	25.491	1'31.585	297,5	15:36'50.232	20	23.645	26.941	18.223	20'09.419	21'18.228P	289,5	14:58'30.061
39	21.910	26.348	17.512	25.454	1'31.224	298,3	15:38'21.456	21	38.185	34.316	19.654	26.082	1'58.237P		15:00'28.298
40	21.960	26.468	17.897	25.759	1'32.084	298,3	15:39'53.540	22	22.232	26.556	17.671	25.681	1'32.140	295,1	15:02'00.438
41	22.010	26.504	17.786	25.682	1'31.982	295,9	15:41'25.522	23	22.110	26.583	17.719	25.822	1'32.234	299,2	15:03'32.672

8° 60 M. VAN DER MARK (1'31.293)

Lap	Seg.1	Seg.2	Seg.3	Seg.4	Lap Time	km/h	Local Time
1							13:40'48.623
2	33.375	27.358	18.001	26.080	1'44.814P		13:42'33.437
3	21.970	26.473	17.600	25.943	1'31.986	299,2	13:44'05.423
4	21.881	26.516	17.624	25.804	1'31.825	297,5	13:45'37.248
5	21.830	26.529	17.698	25.835	1'31.892	302,5	13:47'09.140
6	21.872	26.403	17.600	25.827	1'31.702	300,8	13:48'40.842
7	23.561	29.813	17.945	7'56.102	9'07.421P	301,7	13:57'48.263
8	34.574	27.174	17.749	25.815	1'45.312P		13:59'33.575
9	22.032	26.716	17.626	25.692	1'32.066	301,7	14:01'05.641
10	21.902	26.674	17.660	25.787	1'32.023	303,4	14:02'37.664
11	22.497	29.473	18.663	26.178	1'36.811	303,4	14:04'14.475
12	22.060	26.748	17.802	25.965	1'32.575	297,5	14:05'47.050
13	23.136	26.933	17.901	21'05.447	22'13.417P	299,2	14:28'00.467
14	35.417	27.394	17.774	25.765	1'46.350P		14:29'46.817
15	21.907	26.384	17.414	25.588	1'31.293	300,8	14:31'18.110
16	22.000	26.496	17.608	25.810	1'31.914	299,2	14:32'50.024
17	21.846	26.551	17.500	25.599	1'31.496	303,4	14:34'21.520
18	22.044	26.708	17.832	16'41.251	17'47.835P	300,8	14:52'09.355
19	35.117	27.119	17.675	25.707	1'45.618P		14:53'54.973
20	21.856	26.388	17.555	25.840	1'31.639	300,8	14:55'26.612
21	21.948	26.608	17.534	25.683	1'31.773	300,8	14:56'58.385
22	21.998	26.514	17.549	25.769	1'31.830	302,5	14:58'30.215
23	21.945	26.555	17.669	25.844	1'32.013	300,8	15:00'02.228
24	21.867	26.494	17.679	25.806	1'31.846	300,8	15:01'34.074
25	21.931	26.662	17.608	25.833	1'32.034	302,5	15:03'06.108
26	24.966	27.763	18.134	23'05.413	24'16.276P	301,7	15:27'22.384
27	34.493	32.119	22.915	26.323	1'55.850P		15:29'18.234
28	21.839	26.360	17.502	25.697	1'31.398	302,5	15:30'49.632
29	25.220	27.155	17.674	25.703	1'35.752	300,8	15:32'25.384
30	21.844	26.426	17.599	25.709	1'31.578	301,7	15:33'56.962
31	21.870	26.505	17.618	25.745	1'31.738	302,5	15:35'28.700
32	21.820	26.638	17.614	25.756	1'31.828	302,5	15:37'00.528
33	21.736	26.421	17.554	25.705	1'31.416	305,9	15:38'31.944
34	21.831	26.622	17.642	25.858	1'31.953	303,4	15:40'03.897

10° 11 S. CORTESE (1'31.344)

Lap	Seg.1	Seg.2	Seg.3	Seg.4	Lap Time	km/h	Local Time
1							13:44'28.442
2	37.648	29.270	19.428	3'43.270	5'09.616P		13:49'38.058
3	37.704	28.563	18.687	26.344	1'51.298P		13:51'29.356
4	22.255	26.992	17.885	26.022	1'33.154	295,9	13:53'02.510
5	22.210	26.824	17.783	25.819	1'32.636	292,7	13:54'35.146
6	22.225	26.971	18.015	25.761	1'32.972	296,7	13:56'08.118
7	22.099	27.004	17.924	25.819	1'32.846	299,2	13:57'40.964
8	22.072	26.852	17.950	25.748	1'32.622	299,2	13:59'13.586
9	22.006	26.908	17.733	25.727	1'32.374	298,3	14:00'45.960
10	22.053	26.991	17.692	25.657	1'32.393	297,5	14:02'18.353
11	22.061	27.029	17.937	25.865	1'32.892	298,3	14:03'51.245
12	22.210	27.066	17.803	25.823	1'32.902	297,5	14:05'24.147
13	22.036	26.892	17.700	25.752	1'32.380	296,7	14:06'56.527
14	21.972	27.020	17.893	25.770	1'32.655	295,9	14:08'29.182
15	44.128	48.664	31.329	46'37.728	48'41.849P	184,6	14:57'11.031
16	38.792	33.141	19.553	26.164	1'57.650P		14:59'08.681
17	21.924	26.622	17.569	25.441	1'31.556	298,3	15:00'40.237
18	21.831	26.592	17.578	25.858	1'31.859	299,2	15:02'12.096
19	21.947	26.803	17.700	25.727	1'32.177	299,2	15:03'44.273
20	21.914	26.763	17.694	25.652	1'32.023	296,7	15:05'16.296
21	23.614	34.079	19.441	23'29.616	24'46.750P	299,2	15:30'03.046
22	38.140	28.797	18.577	25.887	1'51.401P		15:31'54.447
23	21.757	26.611	17.495	25.481	1'31.344	296,7	15:33'25.791
24	21.769	26.533	17.492	25.616	1'31.410	300,0	15:34'57.201
25	21.799	29.281	18.953	35.578	1'45.611	300,0	15:36'42.812
26	22.004	26.655	17.568	25.597	1'31.824	298,3	15:38'14.636
27	22.011	26.848	17.689	25.673	1'32.221	302,5	15:39'46.857
28	22.223	26.866	17.703	25.823	1'32.615	287,2	15:41'19.472

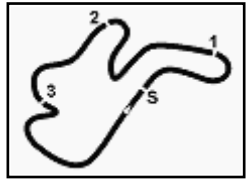
11° 2 L. CAMIER (1'31.477)

Lap	Seg.1	Seg.2	Seg.3	Seg.4	Lap Time	km/h	Local Time
1							13:42'48.094
2	33.912	27.431	18.157	26.358	1'45.858P		13:44'33.952

19/02/2019 P = Pits In/Out - C = Lap Time Cancelled

These data/results cannot be reproduced, stored and/or transmitted in whole or in part by any manner of electronic, mechanical, photocopying, recording, broadcasting or otherwise now known or herein after developed without the previous express consent by the copyright owner, except for reproduction in daily press and regular printed publications on sale to the public within 60 days of the event related to those data/results and always provided that copyright symbol appears together as follows below.

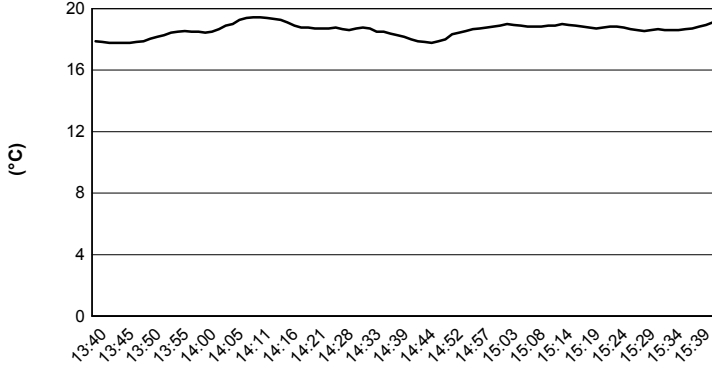
© DORNA WSBK ORGANIZATION Srl 2019



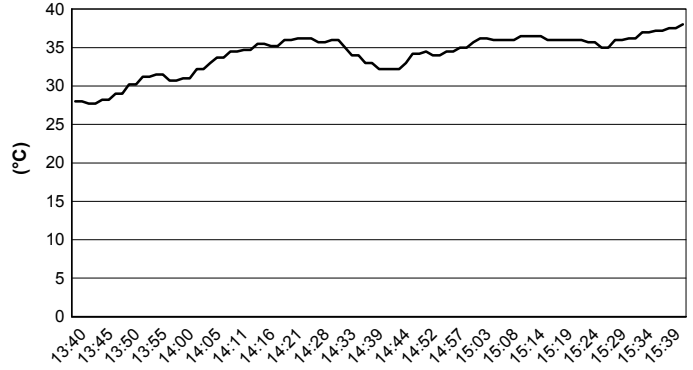
Phillip Island 4.445 m

DWO Phillip Island Official Test, 18-19 February 2019
World Superbike - Weather Report Tuesday Free Practice 2
 Session started 13:40 - Session ended 15:42

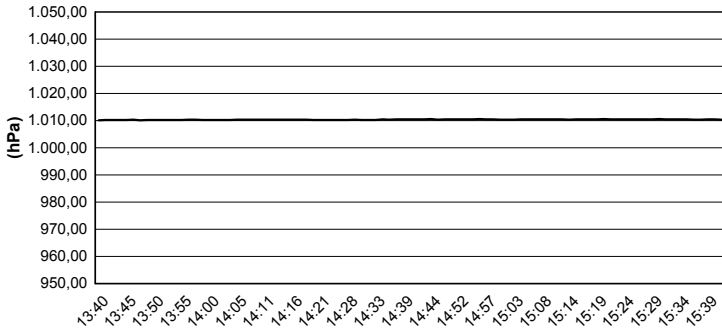
Air Temperature



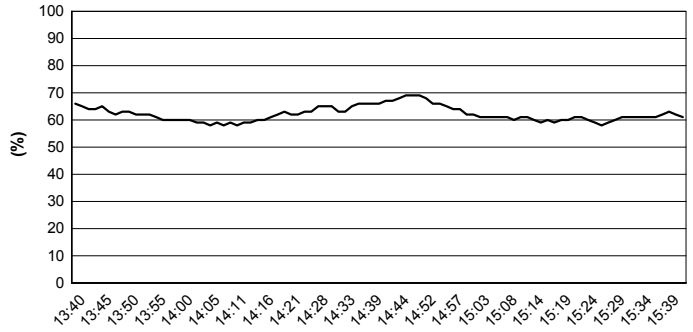
Track Temperature



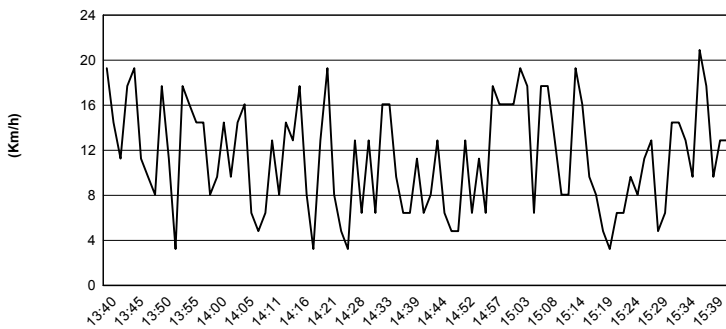
Air Pressure



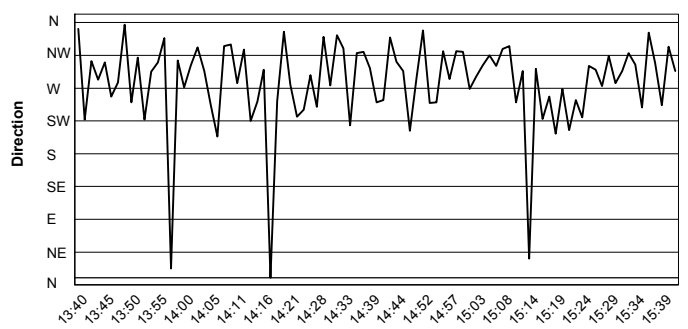
Humidity



Wind Speed



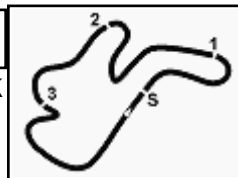
Wind Direction



19/02/2019

These data/results cannot be reproduced, stored and/or transmitted in whole or in part by any manner of electronic, mechanical, photocopying, recording, broadcasting or otherwise now known or herein after developed without the previous express consent by the copyright owner, except for reproduction in daily press and regular printed publications on sale to the public within 60 days of the event related to those data/results and always provided that copyright symbol appears together as follows below.

© DORNA WSBK ORGANIZATION Srl 2019



Phillip Island 4.445 m

DWO Phillip Island Official Test, 18-19 February 2019

World Superbike - Monday - Tuesday Combined Results

No.	Rider	Nat	Team	Bike	Class	Monday	Tuesday	Time	Gap	Rel.	Laps
1	19 A. BAUTISTA	ESP	ARUBA.IT Racing - Ducati	Ducati Panigale V4 R		1'30.743	1'30.303	1'30.303			117
2	66 T. SYKES	GBR	BMW Motorrad WorldSBK Team	BMW S1000 RR		1'31.300	1'30.539	1'30.539	0.236	0.236	105
3	91 L. HASLAM	GBR	Kawasaki Racing Team WorldSBK	Kawasaki ZX-10RR		1'31.399	1'30.668	1'30.668	0.365	0.129	135
4	1 J. REA	GBR	Kawasaki Racing Team WorldSBK	Kawasaki ZX-10RR		1'31.189	1'30.722	1'30.722	0.419	0.054	107
5	33 M. MELANDRI	ITA	GRT Yamaha WorldSBK	Yamaha YZF R1		1'31.445	1'30.760	1'30.760	0.457	0.038	118
6	54 T. RAZGATLIOGLU	TUR	Turkish Puccetti Racing	Kawasaki ZX-10RR		1'32.050	1'30.840	1'30.840	0.537	0.080	130
7	60 M. VAN DER MARK	NED	Pata Yamaha WorldSBK Team	Yamaha YZF R1		1'31.458	1'30.911	1'30.911	0.608	0.071	122
8	11 S. CORTESE	GER	GRT Yamaha WorldSBK	Yamaha YZF R1		1'31.639	1'31.077	1'31.077	0.774	0.166	105
9	22 A. LOWES	GBR	Pata Yamaha WorldSBK Team	Yamaha YZF R1		1'31.146	1'31.168	1'31.146	0.843	0.069	131
10	81 J. TORRES	ESP	Team Pedercini Racing	Kawasaki ZX-10RR		1'32.670	1'31.224	1'31.224	0.921	0.078	140
11	36 L. MERCADO	ARG	Orelac Racing VerdNatura	Kawasaki ZX-10RR		1'32.789	1'31.328	1'31.328	1.025	0.104	119
12	28 M. REITERBERGER	GER	BMW Motorrad WorldSBK Team	BMW S1000 RR		1'31.992	1'31.376	1'31.376	1.073	0.048	96
13	2 L. CAMIER	GBR	Moriwaki Althea Honda Team	Honda CBR1000RR		1'32.459	1'31.443	1'31.443	1.140	0.067	118
14	7 C. DAVIES	GBR	ARUBA.IT Racing - Ducati	Ducati Panigale V4 R		1'32.706	1'31.796	1'31.796	1.493	0.353	120
15	23 R. KIYONARI	JPN	Moriwaki Althea Honda Team	Honda CBR1000RR		1'32.962	1'31.860	1'31.860	1.557	0.064	129
16	50 E. LAVERTY	IRL	Team Goeven	Ducati Panigale V4 R		1'32.797	1'31.986	1'31.986	1.683	0.126	70
17	21 M. RINALDI	ITA	BARNI Racing Team	Ducati Panigale V4 R		1'33.402	1'32.083	1'32.083	1.780	0.097	128
18	52 A. DELBIANCO	ITA	Althea Mie Racing Team	Honda CBR1000RR		1'33.949	1'32.979	1'32.979	2.676	0.896	59
19	17 T. HERFOSS	AUS	Penrite Honda Racing	Honda CBR1000RR		1'34.961	1'33.130	1'33.130	2.827	0.151	72

19/02/2019

These data/results cannot be reproduced, stored and/or transmitted in whole or in part by any manner of electronic, mechanical, photocopying, recording, broadcasting or otherwise now known or herein after developed without the previous express consent by the copyright owner, except for reproduction in daily press and regular printed publications on sale to the public within 60 days of the event related to those data/results and always provided that copyright symbol appears together as follows below.

© DORNA WSBK ORGANIZATION Srl 2019

FKR PERUGIA TIMING


Official Tyre Supplier



Official Timekeeper