

Motul Dutch Round, 12-14 April 2019

Free Practices Combined Results Gr.B after FP2

No.	Rider	Nat	Team	Bike	Class	FP1	FP2	FP3	Time	Gap	Rel.	Avg	LL
1	95 S. DEROUE	NED	Kawasaki MOTOPOST	Kawasaki Ninja 400	B	1'54.257	1'51.618		1'51.618			146,493	17
2	72 V. STEEMAN	NED	Freudenberg KTM Junior Team	KTM RC 390 R	B	1'53.830	1'51.685		1'51.685	0.067	0.067	146,405	15
3	21 B. SANCHEZ	ESP	Scuderia Maranga Racing	Kawasaki Ninja 400	B	1'53.051	1'51.957		1'51.957	0.339	0.272	146,049	20
4	14 E. DE LA VEGA	FRA	Flembbo Leader Team	Kawasaki Ninja 400	B	1'53.807	1'52.048		1'52.048	0.430	0.091	145,930	25
5	30 D. BLIN	POL	Terra e Moto	Yamaha YZF-R3	B	1'55.061	1'52.100		1'52.100	0.482	0.052	145,863	28
6	97 M. KAPPLER	GER	Freudenberg KTM WorldSSP Team	KTM RC 390 R	B	1'54.351	1'52.186		1'52.186	0.568	0.086	145,751	20
7	25 A. VERDOIA	FRA	BCD Yamaha MS Racing	Yamaha YZF-R3	B	1'53.468	1'52.302		1'52.302	0.684	0.116	145,600	25
8	69 J. BUIS	NED	MTM Racing Team	Kawasaki Ninja 400	B	1'54.286	1'52.361		1'52.361	0.743	0.059	145,524	23
9	88 B. IERACI	ITA	Kawasaki GP Project	Kawasaki Ninja 400	B	1'53.217	1'52.434		1'52.434	0.816	0.073	145,429	22
10	20 D. LOUREIRO	RSA	Nutec - RT Motorsports by SKM - Kawasaki	Kawasaki Ninja 400	B		1'52.710		1'52.710	1.092	0.276	145,073	16
11	3 M. PEDENEAU	FRA	Team MHP Racing-Patrick Pons	Yamaha YZF-R3	B	1'55.175	1'53.311		1'53.311	1.693	0.601	144,304	26
12	85 K. SABATUCCI	ITA	Team Trasimeno	Yamaha YZF-R3	B	1'53.372	1'53.575		1'53.372	1.754	0.061	144,226	23
13	99 F. GOMEZ	ESP	DS Junior Team	Kawasaki Ninja 400	B	1'54.430	1'53.393		1'53.393	1.775	0.021	144,199	17
14	44 T. BRAMICH	AUS	Carl Cox-RT Motorsports by SKM-Kawasaki	Kawasaki Ninja 400	B	1'59.369	1'53.477		1'53.477	1.859	0.084	144,093	18
15	54 B. SOFUOGLU	TUR	Turkish Puccetti Racing by TSM	Kawasaki Ninja 400	B	1'53.857	1'53.791		1'53.791	2.173	0.314	143,695	23
16	65 J. FACCO	ITA	Semakin Di Depan Biblion Motocrossing	Yamaha YZF-R3	B	1'55.558	1'54.045		1'54.045	2.427	0.254	143,375	23
17	36 B. NEILA	ESP	BCD Yamaha MS Racing	Yamaha YZF-R3	B	1'57.906	1'54.284		1'54.284	2.666	0.239	143,075	26
18	78 J. FORAY	FRA	Prodina IRCOS Kawasaki	Kawasaki Ninja 400	B	1'56.133	1'54.615		1'54.615	2.997	0.331	142,662	25
19	12 R. DORE	FRA	Team MHP Racing-Patrick Pons	Yamaha YZF-R3	B	1'58.226	1'54.906		1'54.906	3.288	0.291	142,301	26
20	61 Y. OKAYA	JPN	DS Junior Team	Kawasaki Ninja 400	B	2'01.497	1'55.110		1'55.110	3.492	0.204	142,048	25
21	82 J. HYDE	AUS	2R Racing Team	Kawasaki Ninja 400	B	1'55.895	1'55.247		1'55.247	3.629	0.137	141,880	15
22	27 F. ROVELLI	ITA	Kawasaki ParkinGO Team	Kawasaki Ninja 400	B	1'56.234	1'55.545		1'55.545	3.927	0.298	141,514	21
23	93 A. QUINET	FRA	TGP Racing	Honda CBR500R	B	1'56.998	1'56.015		1'56.015	4.397	0.470	140,940	24
24	77 V. SCHWARZ	CZE	ACCR Czech Talent Team - Willi Race	Kawasaki Ninja 400	B	1'59.086	1'57.540		1'57.540	5.922	1.525	139,112	25
25	32 A. PELIKANOVA	CZE	Kawasaki GP Project	Kawasaki Ninja 400	B	2'01.887	1'58.799		1'58.799	7.181	1.259	137,638	22

Top 3 Average Time: 1'51.753

12/04/2019

These data/results cannot be reproduced, stored and/or transmitted in whole or in part by any manner of electronic, mechanical, photocopying, recording, broadcasting or otherwise now known or herein after developed without the previous express consent by the copyright owner, except for reproduction in daily press and regular printed publications on sale to the public within 60 days of the event related to those data/results and always provided that copyright symbol appears together as follows below.

© DORNA WSBK ORGANIZATION Srl 2019



Official Fuel Supplier

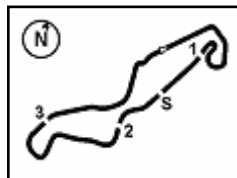


FKR PERUGIA TIMING

Official Tyre Supplier



Official Timekeeper



TT Circuit Assen 4.542 m

1 / 2

Motul Dutch Round, 12-14 April 2019

Results Free Practice 2nd Session Gr.B

No.	Rider	Nat	Team	Bike	Class	Time	Gap	Rel.	Laps	Speed	
										Avg	Max
1	95 S. DEROUE	NED	Kawasaki MOTOPOST	Kawasaki Ninja 400	B	1'51.618			14	146,493	189,1
2	72 V. STEEMAN	NED	Freudenberg KTM Junior Team	KTM RC 390 R	B	1'51.685	0.067	0.067	10	146,405	188,8
3	21 B. SANCHEZ	ESP	Scuderia Maranga Racing	Kawasaki Ninja 400	B	1'51.957	0.339	0.272	12	146,049	189,1
4	14 E. DE LA VEGA	FRA	Flembbo Leader Team	Kawasaki Ninja 400	B	1'52.048	0.430	0.091	14	145,930	190,1
5	30 D. BLIN	POL	Terra e Moto	Yamaha YZF-R3	B	1'52.100	0.482	0.052	14	145,863	188,2
6	97 M. KAPPLER	GER	Freudenberg KTM WorldSSP Team	KTM RC 390 R	B	1'52.186	0.568	0.086	13	145,751	189,5
7	25 A. VERDOÍA	FRA	BCD Yamaha MS Racing	Yamaha YZF-R3	B	1'52.302	0.684	0.116	11	145,600	192,2
8	69 J. BUIS	NED	MTM Racing Team	Kawasaki Ninja 400	B	1'52.361	0.743	0.059	14	145,524	191,2
9	88 B. IERACI	ITA	Kawasaki GP Project	Kawasaki Ninja 400	B	1'52.434	0.816	0.073	12	145,429	191,8
10	20 D. LOUREIRO	RSA	Nutec - RT Motorsports by SKM - Kawasaki	Kawasaki Ninja 400	B	1'52.710	1.092	0.276	13	145,073	187,5
11	3 M. PEDENEAU	FRA	Team MHP Racing-Patrick Pons	Yamaha YZF-R3	B	1'53.311	1.693	0.601	14	144,304	188,2
12	99 F. GOMEZ	ESP	DS Junior Team	Kawasaki Ninja 400	B	1'53.393	1.775	0.082	4	144,199	187,5
13	44 T. BRAMICH	AUS	Carl Cox-RT Motorsports by SKM-Kawasaki	Kawasaki Ninja 400	B	1'53.477	1.859	0.084	13	144,093	186,9
14	85 K. SABATUCCI	ITA	Team Trasimeno	Yamaha YZF-R3	B	1'53.575	1.957	0.098	9	143,968	190,1
15	54 B. SOFUOGLU	TUR	Turkish Puccetti Racing by TSM	Kawasaki Ninja 400	B	1'53.791	2.173	0.216	11	143,695	189,8
16	65 J. FACCO	ITA	Semakin Di Depan Biblion Motocrossing	Yamaha YZF-R3	B	1'54.045	2.427	0.254	13	143,375	188,2
17	36 B. NEILA	ESP	BCD Yamaha MS Racing	Yamaha YZF-R3	B	1'54.284	2.666	0.239	15	143,075	186,9
18	78 J. FORAY	FRA	Prodina IRCOS Kawasaki	Kawasaki Ninja 400	B	1'54.615	2.997	0.331	13	142,662	186,9
19	12 R. DORE	FRA	Team MHP Racing-Patrick Pons	Yamaha YZF-R3	B	1'54.906	3.288	0.291	13	142,301	187,2
20	61 Y. OKAYA	JPN	DS Junior Team	Kawasaki Ninja 400	B	1'55.110	3.492	0.204	13	142,048	190,1
21	82 J. HYDE	AUS	2R Racing Team	Kawasaki Ninja 400	B	1'55.247	3.629	0.137	3	141,880	185,2
22	27 F. ROVELLI	ITA	Kawasaki ParkinGO Team	Kawasaki Ninja 400	B	1'55.545	3.927	0.298	11	141,514	188,2
23	93 A. QUINET	FRA	TGP Racing	Honda CBR500R	B	1'56.015	4.397	0.470	12	140,940	186,2
24	77 V. SCHWARZ	CZE	ACCR Czech Talent Team - Willi Race	Kawasaki Ninja 400	B	1'57.540	5.922	1.525	13	139,112	182,4
25	32 A. PELIKANOVA	CZE	Kawasaki GP Project	Kawasaki Ninja 400	B	1'58.799	7.181	1.259	12	137,638	182,7

 Qualifying Lap Time (107% of 1'51.618): **1'59.432**

AIR	Humidity:	47%	Temp:	6°C
TRACK	Condition:	Dry	Temp:	13°C

Records	Pole	(SP2)	2018	M.Perez	1'50.165	148,420	Km/h
	Race	(RC)	2018	A.Carrasco	1'50.483	148,000	Km/h
	All Times	(SP2)	2018	M.Perez	1'50.165	148,420	Km/h

 Start 12/04/2019 13:30
 End 14:02

The results are provisional until the end of the time limit for protests and appeals and the completion of the technical checks.

These data/results cannot be reproduced, stored and/or transmitted in whole or in part by any manner of electronic, mechanical, photocopying, recording, broadcasting or otherwise now known or herein after developed without the previous express consent by the copyright owner, except for reproduction in daily press and regular printed publications on sale to the public within 60 days of the event related to those data/results and always provided that copyright symbol appears together as follows below.

© DORNA WSBK ORGANIZATION Srl 2019



Official Fuel Supplier

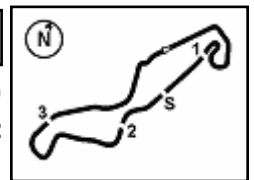


FIKR PERUGIA TIMING

Official Tyre Supplier



Official Timekeeper


Motul Dutch Round, 12-14 April 2019
Results Free Practice 2nd Session Gr.B
Session Highlights

Local Time	No. Rider	Description
13.30.00		Start
13.35.16	27 F. ROVELLI	Crashed - Turn 4
13.35.31	27 F. ROVELLI	Re-joined
13.36.15	54 B. SOFUOGLU	Crashed - Turn 1
13.36.28	54 B. SOFUOGLU	Re-joined
13.36.57	25 A. VERDÓIA	Technical Problem - Pit Exit
13.37.57	69 J. BUIS	Lap Cancelled (1'53.846) - Exceeded Track Limits - Turn 17
13.39.57	21 B. SANCHEZ	On Asphalt - Re-Joined - Turn 1
13.40.26	61 Y. OKAYA	Lap Cancelled (2'09.050) - Exceeded Track Limits - Turn 9
13.41.16	99 F. GOMEZ	Crashed - Turn 10
13.44.31	82 J. HYDE	Crashed - Turn 16
13.48.56	44 T. BRAMICH	Current Lap Cancelled - Exceeded Track Limits - Turn 2
13.50.56	44 T. BRAMICH	Current Lap Cancelled - Exceeded Track Limits - Turn 1
13.51.03	85 K. SABATUCCI	Current Lap Cancelled - Exceeded Track Limits - Turn 1
13.51.16	69 J. BUIS	Lap Cancelled (1'51.955) - Exceeded Track Limits - Turn 17
13.52.34	88 B. IERACI	On Asphalt - Re-Joined - Turn 1
13.52.34	95 S. DEROUE	On Asphalt - Re-Joined - Turn 1
13.53.33	72 V. STEEMAN	Current Lap Cancelled - Exceeded Track Limits - Turn 4
13.53.38	69 J. BUIS	Current Lap Cancelled - Exceeded Track Limits - Turn 4
13.55.10	93 A. QUINET	Lap Cancelled (1'57.757) - Exceeded Track Limits - Turn 17
13.55.37	77 V. SCHWARZ	On Asphalt - Re-Joined - Turn 2
13.55.37	93 A. QUINET	On Asphalt - Re-Joined - Turn 2
13.56.18	27 F. ROVELLI	On Asphalt - Re-Joined - Turn 5
13.56.32	85 K. SABATUCCI	Current Lap Cancelled - Exceeded Track Limits - Turn 17
13.56.38	85 K. SABATUCCI	Lap Cancelled (1'56.364) - Exceeded Track Limits - Turn 17
13.57.13	65 J. FACCO	Lap Cancelled (1'54.433) - Exceeded Track Limits - Turn 17
14.01.02	85 K. SABATUCCI	Technical Problem - Turn 5
14.02.11		End Of Session

Fastest Laps Sequence

No.	Rider	Nat	Team	Bike	Local Time	Time	Gap	Avg
95	S. DEROUE	NED	Kawasaki MOTOPOST	Kawasaki Ninja 400	13:33'49.475	1'54.016		143,411
21	B. SANCHEZ	ESP	Scuderia Maranga Racing	Kawasaki Ninja 400	13:33'49.949	1'53.962	-0.054	143,479
20	D. LOUREIRO	RSA	Nutec - RT Motorsports by SKM - Kawasaki	Kawasaki Ninja 400	13:34'30.089	1'53.793	-0.169	143,692
85	K. SABATUCCI	ITA	Team Trasimeno	Yamaha YZF-R3	13:35'44.289	1'53.575	-0.218	143,968
97	M. KAPPLER	GER	Freudenberg KTM WorldSSP Team	KTM RC 390 R	13:36'46.325	1'52.722	-0.853	145,058
95	S. DEROUE	NED	Kawasaki MOTOPOST	Kawasaki Ninja 400	13:37'38.142	1'52.092	-0.630	145,873
21	B. SANCHEZ	ESP	Scuderia Maranga Racing	Kawasaki Ninja 400	13:37'38.376	1'52.068	-0.024	145,904
72	V. STEEMAN	NED	Freudenberg KTM Junior Team	KTM RC 390 R	13:40'36.782	1'51.685	-0.383	146,405
95	S. DEROUE	NED	Kawasaki MOTOPOST	Kawasaki Ninja 400	13:50'01.433	1'51.618	-0.067	146,493

Start 12/04/2019 13:30 End 14:02 The results are provisional until the end of the time limit for protests and appeals and the completion of the technical checks.

These data/results cannot be reproduced, stored and/or transmitted in whole or in part by any manner of electronic, mechanical, photocopying, recording, broadcasting or otherwise now known or herein after developed without the previous express consent by the copyright owner, except for reproduction in daily press and regular printed publications on sale to the public within 60 days of the event related to those data/results and always provided that copyright symbol appears together as follows below.

© DORNA WSBK ORGANIZATION Srl 2019



Official Fuel Supplier



FIKR PERUGIA TIMING

Official Tyre Supplier



Official Timekeeper

Motul Dutch Round, 12-14 April 2019

Best Sectors & Speed Free Practice 2nd Session Gr.B

BEST LAP			
1	95 S. DEROUE	Kawasaki Ninja 400	1'51.618
2	72 V. STEEMAN	KTM RC 390 R	1'51.685
3	21 B. SANCHEZ	Kawasaki Ninja 400	1'51.957
4	14 E. DE LA VEGA	Kawasaki Ninja 400	1'52.048
5	30 D. BLIN	Yamaha YZF-R3	1'52.100
6	97 M. KAPPLER	KTM RC 390 R	1'52.186
7	25 A. VERDOÏA	Yamaha YZF-R3	1'52.302
8	69 J. BUIS	Kawasaki Ninja 400	1'52.361
9	88 B. IERACI	Kawasaki Ninja 400	1'52.434
10	20 D. LOUREIRO	Kawasaki Ninja 400	1'52.710
11	3 M. PEDENEAU	Yamaha YZF-R3	1'53.311
12	99 F. GOMEZ	Kawasaki Ninja 400	1'53.393
13	44 T. BRAMICH	Kawasaki Ninja 400	1'53.477
14	85 K. SABATUCCI	Yamaha YZF-R3	1'53.575
15	54 B. SOFUOGLU	Kawasaki Ninja 400	1'53.791
16	65 J. FACCO	Yamaha YZF-R3	1'54.045
17	36 B. NEILA	Yamaha YZF-R3	1'54.284
18	78 J. FORAY	Kawasaki Ninja 400	1'54.615
19	12 R. DORE	Yamaha YZF-R3	1'54.906
20	61 Y. OKAYA	Kawasaki Ninja 400	1'55.110
21	82 J. HYDE	Kawasaki Ninja 400	1'55.247
22	27 F. ROVELLI	Kawasaki Ninja 400	1'55.545
23	93 A. QUINET	Honda CBR500R	1'56.015
24	77 V. SCHWARZ	Kawasaki Ninja 400	1'57.540
25	32 A. PELIKANOVA	Kawasaki Ninja 400	1'58.799

SPEED		
1	25 A. VERDOÏA	Yamaha YZF-R3 192,2
2	88 B. IERACI	Kawasaki Ninja 400 191,8
3	69 J. BUIS	Kawasaki Ninja 400 191,2
4	85 K. SABATUCCI	Yamaha YZF-R3 190,1
5	14 E. DE LA VEGA	Kawasaki Ninja 400 190,1
6	61 Y. OKAYA	Kawasaki Ninja 400 190,1
7	54 B. SOFUOGLU	Kawasaki Ninja 400 189,8
8	97 M. KAPPLER	KTM RC 390 R 189,5
9	21 B. SANCHEZ	Kawasaki Ninja 400 189,1
10	95 S. DEROUE	Kawasaki Ninja 400 189,1
11	72 V. STEEMAN	KTM RC 390 R 188,8
12	65 J. FACCO	Yamaha YZF-R3 188,2
13	3 M. PEDENEAU	Yamaha YZF-R3 188,2
14	30 D. BLIN	Yamaha YZF-R3 188,2
15	27 F. ROVELLI	Kawasaki Ninja 400 188,2
16	99 F. GOMEZ	Kawasaki Ninja 400 187,5
17	20 D. LOUREIRO	Kawasaki Ninja 400 187,5
18	12 R. DORE	Yamaha YZF-R3 187,2
19	36 B. NEILA	Yamaha YZF-R3 186,9
20	78 J. FORAY	Kawasaki Ninja 400 186,9
21	44 T. BRAMICH	Kawasaki Ninja 400 186,9
22	93 A. QUINET	Honda CBR500R 186,2
23	82 J. HYDE	Kawasaki Ninja 400 185,2
24	32 A. PELIKANOVA	Kawasaki Ninja 400 182,7
25	77 V. SCHWARZ	Kawasaki Ninja 400 182,4

SEG. 1		SEG. 2		SEG. 3		SEG. 4	
1	95 S. DEROUE 35.988	1	95 S. DEROUE 18.064	1	69 J. BUIS 30.578	1	95 S. DEROUE 26.276
2	88 B. IERACI 36.193	2	88 B. IERACI 18.070	2	95 S. DEROUE 30.683	2	21 B. SANCHEZ 26.368
3	72 V. STEEMAN 36.223	3	21 B. SANCHEZ 18.119	3	72 V. STEEMAN 30.720	3	72 V. STEEMAN 26.506
4	69 J. BUIS 36.267	4	69 J. BUIS 18.126	4	97 M. KAPPLER 30.721	4	14 E. DE LA VEGA 26.569
5	25 A. VERDOÏA 36.347	5	25 A. VERDOÏA 18.132	5	14 E. DE LA VEGA 30.828	5	30 D. BLIN 26.570
6	97 M. KAPPLER 36.372	6	30 D. BLIN 18.143	6	25 A. VERDOÏA 30.836	6	25 A. VERDOÏA 26.597
7	21 B. SANCHEZ 36.378	7	97 M. KAPPLER 18.156	7	88 B. IERACI 30.851	7	88 B. IERACI 26.619
8	30 D. BLIN 36.395	8	14 E. DE LA VEGA 18.167	8	20 D. LOUREIRO 30.889	8	97 M. KAPPLER 26.695
9	3 M. PEDENEAU 36.409	9	85 K. SABATUCCI 18.170	9	30 D. BLIN 30.890	9	69 J. BUIS 26.717
10	20 D. LOUREIRO 36.409	10	65 J. FACCO 18.182	10	21 B. SANCHEZ 30.926	10	54 B. SOFUOGLU 26.811
11	14 E. DE LA VEGA 36.443	11	54 B. SOFUOGLU 18.198	11	3 M. PEDENEAU 31.151	11	20 D. LOUREIRO 26.813
12	99 F. GOMEZ 36.546	12	20 D. LOUREIRO 18.217	12	36 B. NEILA 31.178	12	65 J. FACCO 26.816
13	54 B. SOFUOGLU 36.713	13	72 V. STEEMAN 18.236	13	99 F. GOMEZ 31.278	13	85 K. SABATUCCI 26.840
14	65 J. FACCO 36.799	14	44 T. BRAMICH 18.251	14	44 T. BRAMICH 31.330	14	3 M. PEDENEAU 26.883
15	44 T. BRAMICH 36.822	15	3 M. PEDENEAU 18.271	15	85 K. SABATUCCI 31.341	15	36 B. NEILA 26.956
16	85 K. SABATUCCI 36.855	16	99 F. GOMEZ 18.389	16	54 B. SOFUOGLU 31.382	16	44 T. BRAMICH 27.014
17	82 J. HYDE 36.869	17	61 Y. OKAYA 18.407	17	82 J. HYDE 31.429	17	99 F. GOMEZ 27.119
18	78 J. FORAY 37.057	18	78 J. FORAY 18.452	18	65 J. FACCO 31.529	18	93 A. QUINET 27.179
19	61 Y. OKAYA 37.154	19	36 B. NEILA 18.487	19	78 J. FORAY 31.532	19	78 J. FORAY 27.265
20	12 R. DORE 37.190	20	12 R. DORE 18.529	20	61 Y. OKAYA 31.692	20	61 Y. OKAYA 27.290
21	27 F. ROVELLI 37.255	21	82 J. HYDE 18.541	21	12 R. DORE 31.734	21	12 R. DORE 27.303
22	36 B. NEILA 37.313	22	27 F. ROVELLI 18.646	22	93 A. QUINET 31.796	22	27 F. ROVELLI 27.511
23	93 A. QUINET 37.443	23	93 A. QUINET 18.695	23	27 F. ROVELLI 31.914	23	82 J. HYDE 27.690
24	32 A. PELIKANOVA 38.038	24	77 V. SCHWARZ 18.818	24	77 V. SCHWARZ 31.996	24	77 V. SCHWARZ 27.900
25	77 V. SCHWARZ 38.135	25	32 A. PELIKANOVA 19.434	25	32 A. PELIKANOVA 32.638	25	32 A. PELIKANOVA 28.399

12/04/2019

These data/results cannot be reproduced, stored and/or transmitted in whole or in part by any manner of electronic, mechanical, photocopying, recording, broadcasting or otherwise now known or herein after developed without the previous express consent by the copyright owner, except for reproduction in daily press and regular printed publications on sale to the public within 60 days of the event related to those data/results and always provided that copyright symbol appears together as follows below.

© DORNA WSBK ORGANIZATION Srl 2019



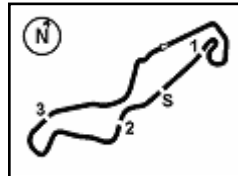
Official Fuel Supplier



Official Tyre Supplier



Official Timekeeper



TT Circuit Assen 4.542 m

Motul Dutch Round, 12-14 April 2019

Ideal Times Free Practice 2nd Session Gr.B

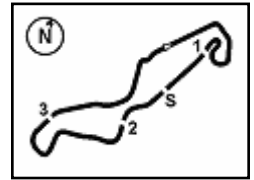
No.	Rider	Nat	Bike	Seg. 1	Seg. 2	Seg. 3	Seg. 4	Ideal Time		
				Diff. 1	Diff. 2	Diff. 3	Diff. 4	Best Lap	Pos.	Diff.
1	95 S. DEROUE	NED	Kawasaki Ninja 400	35.988 +0.357	18.064 +0.250	30.683	26.276	1'51.011 1'51.618	1	0.607
2	72 V. STEEMAN	NED	KTM RC 390 R	36.223	18.236	30.720	26.506	1'51.685 1'51.685	2	
3	69 J. BUIS	NED	Kawasaki Ninja 400	36.267 +0.194	18.126 +0.205	30.578 +0.274	26.717	1'51.688 1'52.361	8	0.673
4	88 B. IERACI	ITA	Kawasaki Ninja 400	36.193 +0.195	18.070 +0.139	30.851	26.619 +0.367	1'51.733 1'52.434	9	0.701
5	21 B. SANCHEZ	ESP	Kawasaki Ninja 400	36.378 +0.067	18.119 +0.093	30.926	26.368 +0.006	1'51.791 1'51.957	3	0.166
6	25 A. VERDOÑA	FRA	Yamaha YZF-R3	36.347 +0.307	18.132	30.836 +0.083	26.597	1'51.912 1'52.302	7	0.390
7	97 M. KAPPLER	GER	KTM RC 390 R	36.372	18.156	30.721 +0.120	26.695 +0.122	1'51.944 1'52.186	6	0.242
8	30 D. BLIN	POL	Yamaha YZF-R3	36.395	18.143 +0.102	30.890	26.570	1'51.998 1'52.100	5	0.102
9	14 E. DE LA VEGA	FRA	Kawasaki Ninja 400	36.443	18.167 +0.041	30.828	26.569	1'52.007 1'52.048	4	0.041
10	20 D. LOUREIRO	RSA	Kawasaki Ninja 400	36.409 +0.022	18.217 +0.196	30.889 +0.006	26.813 +0.158	1'52.328 1'52.710	10	0.382
11	3 M. PEDENEAU	FRA	Yamaha YZF-R3	36.409	18.271 +0.221	31.151 +0.010	26.883 +0.366	1'52.714 1'53.311	11	0.597
12	54 B. SOFUOGLU	TUR	Kawasaki Ninja 400	36.713 +0.028	18.198 +0.192	31.382 +0.193	26.811 +0.274	1'53.104 1'53.791	15	0.687
13	85 K. SABATUCCI	ITA	Yamaha YZF-R3	36.855 +0.121	18.170	31.341	26.840 +0.248	1'53.206 1'53.575	14	0.369
14	65 J. FACCO	ITA	Yamaha YZF-R3	36.799 +0.427	18.182 +0.115	31.529 +0.177	26.816	1'53.326 1'54.045	16	0.719
15	99 F. GOMEZ	ESP	Kawasaki Ninja 400	36.546	18.389	31.278 +0.028	27.119 +0.033	1'53.332 1'53.393	12	0.061
16	44 T. BRAMICH	AUS	Kawasaki Ninja 400	36.822	18.251	31.330 +0.060	27.014	1'53.417 1'53.477	13	0.060
17	36 B. NEILA	ESP	Yamaha YZF-R3	37.313 +0.213	18.487 +0.137	31.178	26.956	1'53.934 1'54.284	17	0.350
18	78 J. FORAY	FRA	Kawasaki Ninja 400	37.057	18.452 +0.058	31.532 +0.046	27.265 +0.205	1'54.306 1'54.615	18	0.309
19	82 J. HYDE	AUS	Kawasaki Ninja 400	36.869	18.541 +0.272	31.429 +0.226	27.690 +0.220	1'54.529 1'55.247	21	0.718
20	61 Y. OKAYA	JPN	Kawasaki Ninja 400	37.154 +0.099	18.407 +0.010	31.692 +0.458	27.290	1'54.543 1'55.110	20	0.567
21	12 R. DORE	FRA	Yamaha YZF-R3	37.190	18.529	31.734	27.303 +0.150	1'54.756 1'54.906	19	0.150
22	93 A. QUINET	FRA	Honda CBR500R	37.443 +0.214	18.695	31.796 +0.443	27.179 +0.245	1'55.113 1'56.015	23	0.902
23	27 F. ROVELLI	ITA	Kawasaki Ninja 400	37.255	18.646	31.914 +0.023	27.511 +0.196	1'55.326 1'55.545	22	0.219
24	77 V. SCHWARZ	CZE	Kawasaki Ninja 400	38.135 +0.262	18.818	31.996 +0.145	27.900 +0.284	1'56.849 1'57.540	24	0.691
25	32 A. PELIKANOVA	CZE	Kawasaki Ninja 400	38.038 +0.003	19.434 +0.115	32.638 +0.172	28.399	1'58.509 1'58.799	25	0.290
Overall Ideal Time				35.988	18.064	30.578	26.276	1'50.906		

12/04/2019

These data/results cannot be reproduced, stored and/or transmitted in whole or in part by any manner of electronic, mechanical, photocopying, recording, broadcasting or otherwise now known or herein after developed without the previous express consent by the copyright owner, except for reproduction in daily press and regular printed publications on sale to the public within 60 days of the event related to those data/results and always provided that copyright symbol appears together as follows below.

© DORNA WSBK ORGANIZATION Srl 2019





TT Circuit Assen 4.542 m

4 / 4

Motul Dutch Round, 12-14 April 2019

Chronological Analysis Free Practice 2nd Session Gr.B

13	45.240	21.258	34.773	37.517	2'18.788P	170,9	13:56'39.428
14	2'07.023	19.311	32.833	28.851	3'28.018P	175,0	14:00'07.446

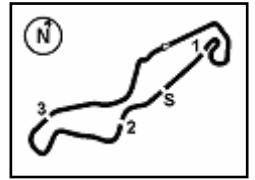
25° 32 A. PELIKANOVA (1'58.799)							
Lap	Seg.1	Seg.2	Seg.3	Seg.4	Lap Time	km/h	Local Time
1		20.203	35.773	30.518		182,7	13:32'49.386
2	39.402	19.923	34.521	29.492	2'03.338	181,2	13:34'52.724
3	40.155	19.947	33.933	28.945	2'02.980	180,6	13:36'55.704
4	38.820	19.851	33.477	29.138	2'01.286	181,2	13:38'56.990
5	38.606	19.750	33.566	28.826	2'00.748	181,8	13:40'57.738
6	39.146	19.900	33.289	29.023	2'01.358	180,0	13:42'59.096
7	38.367	19.570	33.536	28.523	1'59.996	181,5	13:44'59.092
8	38.217	19.563	32.638	28.690	1'59.108	180,6	13:46'58.200
9	38.041	19.549	32.810	28.399	1'58.799	180,9	13:48'56.999
10	38.038	19.546	33.030	44.900	2'15.514P	181,5	13:51'12.513
11	3'46.105	20.130	34.026	29.121	5'09.382P	180,3	13:56'21.895
12	38.675	19.540	33.141	28.760	2'00.116	181,2	13:58'22.011
13	38.465	19.434	33.555	28.778	2'00.232	181,5	14:00'22.243

12/04/2019 P = Pits In/Out - C = Lap Time Cancelled

These data/results cannot be reproduced, stored and/or transmitted in whole or in part by any manner of electronic, mechanical, photocopying, recording, broadcasting or otherwise now known or herein after developed without the previous express consent by the copyright owner, except for reproduction in daily press and regular printed publications on sale to the public within 60 days of the event related to those data/results and always provided that copyright symbol appears together as follows below.

© DORNA WSBK ORGANIZATION Srl 2019

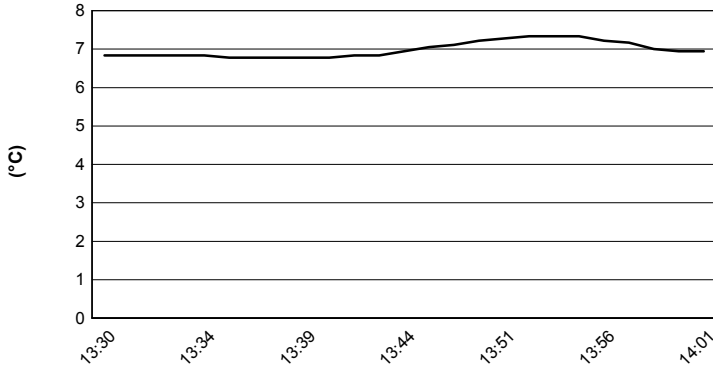




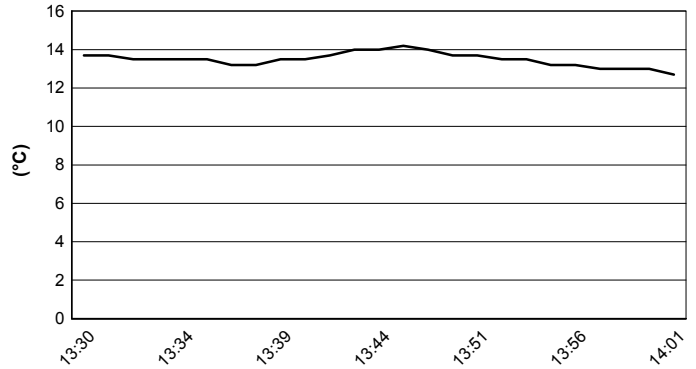
TT Circuit Assen 4.542 m

Motul Dutch Round, 12-14 April 2019
Weather Report Free Practice 2nd Session Gr.B
Session started 13:30 - Session ended 14:02

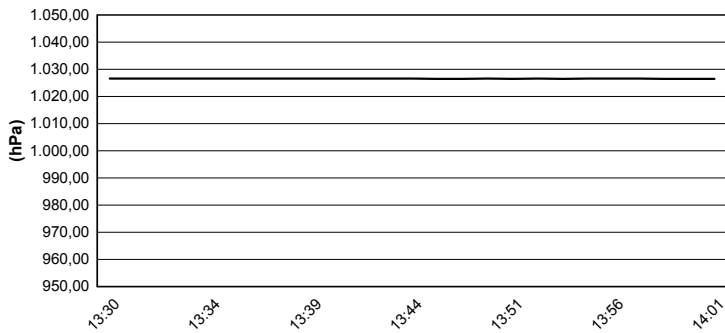
Air Temperature



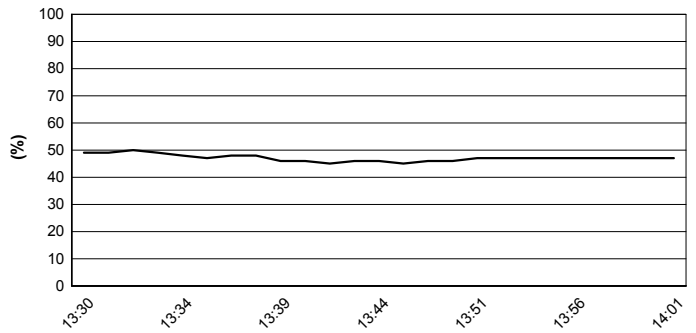
Track Temperature



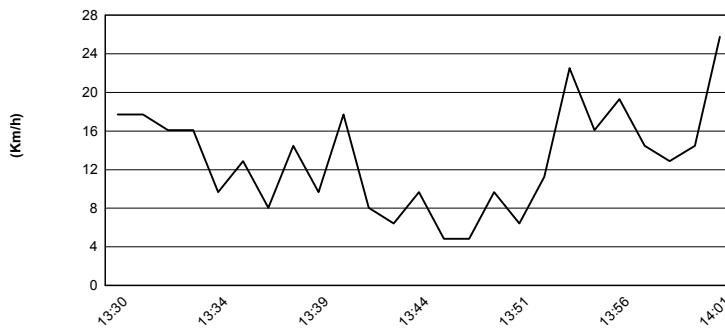
Air Pressure



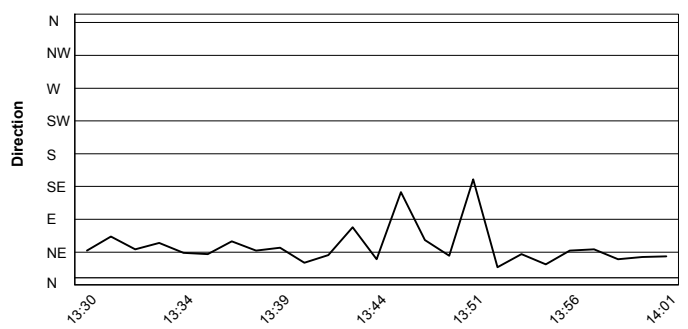
Humidity



Wind Speed



Wind Direction



12/04/2019

These data/results cannot be reproduced, stored and/or transmitted in whole or in part by any manner of electronic, mechanical, photocopying, recording, broadcasting or otherwise now known or herein after developed without the previous express consent by the copyright owner, except for reproduction in daily press and regular printed publications on sale to the public within 60 days of the event related to those data/results and always provided that copyright symbol appears together as follows below.

© DORNA WSBK ORGANIZATION Srl 2019



Official Fuel Supplier

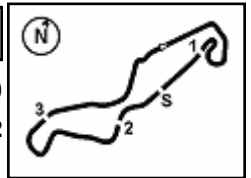


FICR PERUGIA TIMING

Official Tyre Supplier



Official Timekeeper



TT Circuit Assen 4.542 m

Motul Dutch Round, 12-14 April 2019

Best Laps & Speeds Gr.B

No.	Rider Bike	Nat	Best Lap		FP1		FP2												
			LL	SPD	LL	SPD	LL	SPD											
1	95 S. DEROUE Kawasaki Ninja 400	NED	1'51.618 17 189,1		1'54.257 3 183,9		1'51.618 14 189,1												
2	72 V. STEEMAN KTM RC 390 R	NED	1'51.685 15 188,8		1'53.830 5 186,2		1'51.685 10 188,8												
3	21 B. SANCHEZ Kawasaki Ninja 400	ESP	1'51.957 20 189,1		1'53.051 8		1'51.957 12 189,1												
4	14 E. DE LA VEGA Kawasaki Ninja 400	FRA	1'52.048 25 190,4		1'53.807 11 190,4		1'52.048 14 190,1												
5	30 D. BLIN Yamaha YZF-R3	POL	1'52.100 28 190,1		1'55.061 14 190,1		1'52.100 14 188,1												
6	97 M. KAPPLER KTM RC 390 R	GER	1'52.186 20 189,8		1'54.351 7 189,8		1'52.186 13 189,4												
7	25 A. VERDOÍA Yamaha YZF-R3	FRA	1'52.302 25 192,1		1'53.468 14 191,4		1'52.302 11 192,1												
8	69 J. BUIS Kawasaki Ninja 400	NED	1'52.361 23 191,1		1'54.286 9 184,6		1'52.361 14 191,1												
9	88 B. IERACI Kawasaki Ninja 400	ITA	1'52.434 22 191,8		1'53.217 10 190,1		1'52.434 12 191,8												
10	20 D. LOUREIRO Kawasaki Ninja 400	RSA	1'52.710 13 187,5				1'52.710 13 187,5												
11	3 M. PEDENEAU Yamaha YZF-R3	FRA	1'53.311 26 189,1		1'55.175 12 189,1		1'53.311 14 188,1												
12	85 K. SABATUCCI Yamaha YZF-R3	ITA	1'53.372 23 191,1		1'53.372 14 191,1		1'53.575 9 190,1												
13	99 F. GOMEZ Kawasaki Ninja 400	ESP	1'53.393 17 187,8		1'54.430 13 187,8		1'53.393 4 187,5												
14	44 T. BRAMICH Kawasaki Ninja 400	AUS	1'53.477 18 186,8		1'59.369 5 185,5		1'53.477 13 186,8												
15	54 B. SOFUOGLU Kawasaki Ninja 400	TUR	1'53.791 23 189,8		1'53.857 12 189,4		1'53.791 11 189,8												
16	65 J. FACCO Yamaha YZF-R3	ITA	1'54.045 23 188,8		1'55.558 10 188,8		1'54.045 13 188,1												
17	36 B. NEILA Yamaha YZF-R3	ESP	1'54.284 26 186,8		1'57.906 11 183,3		1'54.284 15 186,8												
18	78 J. FORAY Kawasaki Ninja 400	FRA	1'54.615 25 191,1		1'56.133 12 191,1		1'54.615 13 186,8												
19	12 R. DORE Yamaha YZF-R3	FRA	1'54.906 26 187,1		1'58.226 13 186,2		1'54.906 13 187,1												
20	61 Y. OKAYA Kawasaki Ninja 400	JPN	1'55.110 25 190,1		2'01.497 12 185,2		1'55.110 13 190,1												
21	82 J. HYDE Kawasaki Ninja 400	AUS	1'55.247 15 186,5		1'55.895 12 186,5		1'55.247 3 185,2												
22	27 F. ROVELLI Kawasaki Ninja 400	ITA	1'55.545 21 188,1		1'56.234 10 187,1		1'55.545 11 188,1												
23	93 A. QUINET Honda CBR500R	FRA	1'56.015 24 186,2		1'56.998 12 181,8		1'56.015 12 186,2												
24	77 V. SCHWARZ Kawasaki Ninja 400	CZE	1'57.540 25 182,4		1'59.086 12 181,2		1'57.540 13 182,4												
25	32 A. PELIKANOVA Kawasaki Ninja 400	CZE	1'58.799 22 183,6		2'01.887 10 183,6		1'58.799 12 182,7												

12/04/2019

These data/results cannot be reproduced, stored and/or transmitted in whole or in part by any manner of electronic, mechanical, photocopying, recording, broadcasting or otherwise now known or herein after developed without the previous express consent by the copyright owner, except for reproduction in daily press and regular printed publications on sale to the public within 60 days of the event related to those data/results and always provided that copyright symbol appears together as follows below.

© DORNA WSBK ORGANIZATION Srl 2019

