

## Pirelli Teruel Round, 4 - 6 September 2020

### Results Free Practice 2nd Session

MotorLand Aragon 5.077 m

1 / 3

No.	Rider	Nat	Team	Bike	Class	Time	Gap	Rel.	Laps	Speed	
										Avg	Max
1	55 A. LOCATELLI	ITA	BARDAHL Evan Bros. WorldSSP Team	Yamaha YZF R6		<b>1'54.095</b>			16	160,193	<b>266,0</b>
2	3 R. DE ROSA	ITA	MV Agusta Reparto Corse	MV Agusta F3 675		<b>1'54.871</b>	0.776	0.776	17	159,111	<b>264,7</b>
3	32 I. VINALES	ESP	Kallio Racing	Yamaha YZF R6		<b>1'55.166</b>	1.071	0.295	13	158,703	<b>268,7</b>
4	44 L. MAHIAS	FRA	Kawasaki Puccetti Racing	Kawasaki ZX-6R		<b>1'55.215</b>	1.120	0.049	16	158,636	<b>266,0</b>
5	16 J. CLUZEL	FRA	GMT94 Yamaha	Yamaha YZF R6		<b>1'55.228</b>	1.133	0.013	15	158,618	<b>265,4</b>
6	38 H. SOOMER	EST	Kallio Racing	Yamaha YZF R6		<b>1'55.358</b>	1.263	0.130	13	158,439	<b>265,4</b>
7	56 P. SEBESTYEN	HUN	OXXO Yamaha Team Toth	Yamaha YZF R6		<b>1'55.477</b>	1.382	0.119	13	158,276	<b>262,1</b>
8	5 P. OETTL	GER	Kawasaki Puccetti Racing	Kawasaki ZX-6R		<b>1'55.489</b>	1.394	0.012	16	158,259	<b>264,7</b>
9	4 S. ODENDAAL	RSA	EAB Ten Kate Racing	Yamaha YZF R6		<b>1'55.604</b>	1.509	0.115	15	158,102	<b>266,7</b>
10	81 M. GONZALEZ	ESP	Kawasaki ParkinGO Team	Kawasaki ZX-6R		<b>1'55.788</b>	1.693	0.184	14	157,851	<b>263,4</b>
11	99 D. WEBB	GBR	WRP Wepol Racing	Yamaha YZF R6		<b>1'56.028</b>	1.933	0.240	14	157,524	<b>266,0</b>
12	12 A. RUIZ CARRANZA	ESP	EMPERADOR Racing Team	Yamaha YZF R6		<b>1'56.031</b>	1.936	0.003	17	157,520	<b>267,3</b>
13	61 C. ONCU	TUR	Turkish Racing Team	Kawasaki ZX-6R		<b>1'56.159</b>	2.064	0.128	14	157,346	<b>258,4</b>
14	94 C. PEROLARI	FRA	GMT94 Yamaha	Yamaha YZF R6		<b>1'56.298</b>	2.203	0.139	16	157,158	<b>262,8</b>
15	78 H. OKUBO	JPN	Dynavolt Honda	Honda CBR600RR		<b>1'56.621</b>	2.526	0.323	15	156,723	<b>261,5</b>
16	84 L. CRESSON	BEL	OXXO Yamaha Team Toth	Yamaha YZF R6		<b>1'56.663</b>	2.568	0.042	16	156,667	<b>260,9</b>
17	25 A. VERDOIA	FRA	bLU cRU WorldSSP by MS Racing	Yamaha YZF R6		<b>1'56.667</b>	2.572	0.004	13	156,661	<b>266,0</b>
18	22 F. FULIGNI	ITA	MV Agusta Reparto Corse	MV Agusta F3 675		<b>1'56.762</b>	2.667	0.095	17	156,534	<b>261,5</b>
19	83 L. EPIS	AUS	MPM Routz Racing Team	Yamaha YZF R6		<b>1'56.901</b>	2.806	0.139	17	156,348	<b>262,8</b>
20	47 A. BASSANI	ITA	Soradis Yamaha Motox Racing	Yamaha YZF R6		<b>1'56.917</b>	2.822	0.016	16	156,326	<b>262,8</b>
21	2 L. MONTELLA	ITA	DK MOTORSPORT	Yamaha YZF R6		<b>1'56.953</b>	2.858	0.036	15	156,278	<b>259,0</b>
22	6 M. HERRERA	ESP	Altogoo Racing Team	Yamaha YZF R6		<b>1'56.968</b>	2.873	0.015	17	156,258	<b>263,4</b>
23	34 K. MANFREDI	ITA	Altogoo Racing Team	Yamaha YZF R6		<b>1'57.224</b>	3.129	0.256	15	155,917	<b>261,5</b>
24	52 P. HOBELSBERGER	GER	Dynavolt Honda	Honda CBR600RR		<b>1'57.327</b>	3.232	0.103	12	155,780	<b>258,4</b>
25	9 G. HENDRA PRATAMA	INA	bLU cRU WorldSSP by MS Racing	Yamaha YZF R6		<b>1'57.479</b>	3.384	0.152	10	155,578	<b>264,7</b>

Qualifying Lap Time (107% of 1'54.095): 2'02.083

\* WorldSSP Challenge

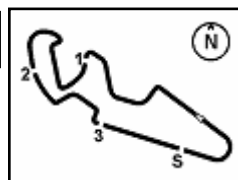
AIR	Humidity:	28%	Temp:	31°C
TRACK	Condition:	Dry	Temp:	45°C

Records	Pole (QP)	2015 J.Cluzel	1'53.138	161,550	Km/h
	Race (RC)	2015 P.Jacobsen	1'54.605	159,480	Km/h
	All Times (QP)	2015 J.Cluzel	1'53.138	161,550	Km/h

Start 04/09/2020 16:00 End 16:47 The results are provisional until the end of the time limit for protests and appeals and the completion of the technical checks.

These data/results cannot be reproduced, stored and/or transmitted in whole or in part by any manner of electronic, mechanical, photocopying, recording, broadcasting or otherwise now known or herein after developed without the previous express consent by the copyright owner, except for reproduction in daily press and regular printed publications on sale to the public within 60 days of the event related to those data/results and always provided that copyright symbol appears together as follows below.

© DORNA WSBK ORGANIZATION Srl 2020



## Pirelli Teruel Round, 4 - 6 September 2020

### Results Free Practice 2nd Session

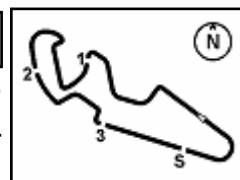
#### Session Highlights

Local Time	No. Rider	Description
16.00.00		Start
16.02.49	9 G. HENDRA PRATAMA	Crashed - Turn 1
16.03.46	9 G. HENDRA PRATAMA	Re-joined
16.06.50	38 H. SOOMER	On Asphalt - Re-Joined - Turn 1
16.08.13	83 L. EPIS	Lap Cancelled (1'57.716) - Exceeded Track Limits - Turn 17
16.08.26	56 P. SEBESTYEN	On Asphalt - Re-Joined - Turn 1
16.08.32	47 A. BASSANI	Lap Cancelled (2'00.667) - Exceeded Track Limits - Turn 17
16.09.06	94 C. PEROLARI	Lap Cancelled (1'57.138) - Exceeded Track Limits - Turn 17
16.09.18	52 P. HOBELSBERGER	Crashed - Turn 9
16.09.47	81 M. GONZALEZ	Lap Cancelled (1'57.217) - Exceeded Track Limits - Turn 17
16.10.18	83 L. EPIS	Lap Cancelled (1'57.662) - Exceeded Track Limits - Turn 17
16.10.37	52 P. HOBELSBERGER	Re-joined
16.12.29	47 A. BASSANI	On Asphalt - Re-Joined - Turn 1
16.12.50	84 L. CRESSON	Lap Cancelled (2'08.723) - Exceeded Track Limits - Turn 17
16.12.55	78 H. OKUBO	Lap Cancelled (1'58.822) - Exceeded Track Limits - Turn 17
16.13.54	32 I. VINALES	Current Lap Cancelled - Exceeded Track Limits - Turn 3
16.14.10	83 L. EPIS	Lap Cancelled (1'57.567) - Exceeded Track Limits - Turn 17
16.16.29	78 H. OKUBO	On Asphalt - Re-Joined - Turn 1
16.18.04	83 L. EPIS	Lap Cancelled (1'57.706) - Exceeded Track Limits - Turn 17
16.24.22	25 A. VERDOIA	On Asphalt - Re-Joined - Turn 12
16.25.19	9 G. HENDRA PRATAMA	On Asphalt - Re-Joined - Turn 1
16.25.29	56 P. SEBESTYEN	Current Lap Cancelled - Exceeded Track Limits - Turn 3
16.26.53	61 C. ONCU	On Asphalt - Re-Joined - Turn 1
16.27.41	6 M. HERRERA	On Asphalt - Re-Joined - Turn 5
16.28.01	52 P. HOBELSBERGER	On Asphalt - Re-Joined - Turn 5
16.28.31	16 J. CLUZEL	On Asphalt - Re-Joined - Turn 1
16.28.35	25 A. VERDOIA	Lap Cancelled (1'57.762) - Exceeded Track Limits - Turn 17
16.28.42	52 P. HOBELSBERGER	On Asphalt - Re-Joined - Turn 12
16.29.33	12 A. RUIZ CARRANZA	On Asphalt - Re-Joined - Turn 8
16.29.58	78 H. OKUBO	On Asphalt - Re-Joined - Turn 12
16.31.55	38 H. SOOMER	On Asphalt - Re-Joined - Turn 1
16.32.24	81 M. GONZALEZ	On Asphalt - Re-Joined - Turn 1
16.32.39	83 L. EPIS	Lap Cancelled (2'43.918) - Exceeded Track Limits - Turn 11
16.32.43	78 H. OKUBO	Lap Cancelled (2'04.638) - Exceeded Track Limits - Turn 11
16.33.10	47 A. BASSANI	Lap Cancelled (1'57.147) - Exceeded Track Limits - Turn 17
16.34.20	99 D. WEBB	On Asphalt - Re-Joined - Turn 12
16.37.04	78 H. OKUBO	On Asphalt - Re-Joined - Turn 1
16.37.04	84 L. CRESSON	On Asphalt - Re-Joined - Turn 1
16.38.17	83 L. EPIS	On Asphalt - Re-Joined - Turn 11
16.38.17	78 H. OKUBO	On Asphalt - Re-Joined - Turn 11
16.39.29	56 P. SEBESTYEN	On Asphalt - Re-Joined - Turn 12
16.40.28	32 I. VINALES	On Asphalt - Re-Joined - Turn 7
16.42.02	12 A. RUIZ CARRANZA	On Asphalt - Re-Joined - Turn 1
16.42.14	25 A. VERDOIA	On Asphalt - Re-Joined - Turn 12
16.44.07	84 L. CRESSON	Current Lap Cancelled - Exceeded Track Limits - Turn 3
16.44.13	81 M. GONZALEZ	Lap Cancelled (1'57.156) - Exceeded Track Limits - Turn 17
16.44.58	94 C. PEROLARI	Lap Cancelled (1'59.570) - Exceeded Track Limits - Turn 17
16.45.41	94 C. PEROLARI	Current Lap Cancelled - Exceeded Track Limits - Turn 3
16.45.46	47 A. BASSANI	Lap Cancelled (1'57.683) - Exceeded Track Limits - Turn 17
16.45.52	55 A. LOCATELLI	Lap Cancelled (1'54.475) - Exceeded Track Limits - Turn 17
16.47.16		End Of Session

Start                      End                      The results are provisional until the end of the time limit for protests and appeals  
04/09/2020              16:00                      16:47                      and the completion of the technical checks.

These data/results cannot be reproduced, stored and/or transmitted in whole or in part by any manner of electronic, mechanical, photocopying, recording, broadcasting or otherwise now known or herein after developed without the previous express consent by the copyright owner, except for reproduction in daily press and regular printed publications on sale to the public within 60 days of the event related to those data/results and always provided that copyright symbol appears together as follows below.

© DORNA WSBK ORGANIZATION Srl 2020



## Pirelli Teruel Round, 4 - 6 September 2020

### Results Free Practice 2nd Session

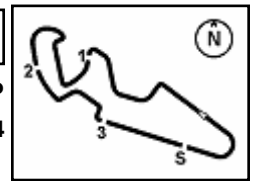
#### Fastest Laps Sequence

No.	Rider	Nat	Team	Bike	Local Time	Time	Gap	Avg
55	A. LOCATELLI	ITA	BARDAHL Evan Bros. WorldSSP Team	Yamaha YZF R6	16:03'56.467	<b>1'55.968</b>		157,606
3	R. DE ROSA	ITA	MV Agusta Reparto Corse	MV Agusta F3 675	16:05'19.020	<b>1'55.561</b>	-0.407	158,161
55	A. LOCATELLI	ITA	BARDAHL Evan Bros. WorldSSP Team	Yamaha YZF R6	16:05'51.997	<b>1'55.530</b>	-0.031	158,203
3	R. DE ROSA	ITA	MV Agusta Reparto Corse	MV Agusta F3 675	16:09'09.548	<b>1'54.898</b>	-0.632	159,073
3	R. DE ROSA	ITA	MV Agusta Reparto Corse	MV Agusta F3 675	16:24'21.938	<b>1'54.871</b>	-0.027	159,111
55	A. LOCATELLI	ITA	BARDAHL Evan Bros. WorldSSP Team	Yamaha YZF R6	16:30'16.749	<b>1'54.731</b>	-0.140	159,305
55	A. LOCATELLI	ITA	BARDAHL Evan Bros. WorldSSP Team	Yamaha YZF R6	16:32'11.145	<b>1'54.396</b>	-0.335	159,771
55	A. LOCATELLI	ITA	BARDAHL Evan Bros. WorldSSP Team	Yamaha YZF R6	16:34'05.424	<b>1'54.279</b>	-0.117	159,935
55	A. LOCATELLI	ITA	BARDAHL Evan Bros. WorldSSP Team	Yamaha YZF R6	16:35'59.519	<b>1'54.095</b>	-0.184	160,193

04/09/2020      Start      End      The results are provisional until the end of the time limit for protests and appeals  
16:00      16:47      and the completion of the technical checks.

These data/results cannot be reproduced, stored and/or transmitted in whole or in part by any manner of electronic, mechanical, photocopying, recording, broadcasting or otherwise now known or herein after developed without the previous express consent by the copyright owner, except for reproduction in daily press and regular printed publications on sale to the public within 60 days of the event related to those data/results and always provided that copyright symbol appears together as follows below.

© DORNA WSBK ORGANIZATION Srl 2020



## Pirelli Teruel Round, 4 - 6 September 2020

### Free Practices Combined Results after FP2

MotorLand Aragon 5.077 m

No.	Rider	Nat	Team	Bike	Class	FP1	FP2	FP3	Time	Gap	Rel.	Avg	LL
1	<b>55 A. LOCATELLI</b>	ITA	BARDAHL Evan Bros. WorldSSP Team	Yamaha YZF R6		1'54.171	<b>1'54.095</b>		<b>1'54.095</b>			160,193	32
2	<b>3 R. DE ROSA</b>	ITA	MV Agusta Reparto Corse	MV Agusta F3 675		<b>1'54.632</b>	1'54.871		<b>1'54.632</b>	0.537	0.537	159,442	32
3	<b>44 L. MAHIAS</b>	FRA	Kawasaki Puccetti Racing	Kawasaki ZX-6R		<b>1'54.661</b>	1'55.215		<b>1'54.661</b>	0.566	0.029	159,402	23
4	<b>38 H. SOOMER</b>	EST	Kallio Racing	Yamaha YZF R6		<b>1'55.032</b>	1'55.358		<b>1'55.032</b>	0.937	0.371	158,888	27
5	<b>16 J. CLUZEL</b>	FRA	GMT94 Yamaha	Yamaha YZF R6		<b>1'55.092</b>	1'55.228		<b>1'55.092</b>	0.997	0.060	158,805	29
6	<b>4 S. ODENDAAL</b>	RSA	EAB Ten Kate Racing	Yamaha YZF R6		<b>1'55.139</b>	1'55.604		<b>1'55.139</b>	1.044	0.047	158,740	31
7	<b>32 I. VINALES</b>	ESP	Kallio Racing	Yamaha YZF R6			<b>1'55.166</b>		<b>1'55.166</b>	1.071	0.027	158,703	13
8	<b>81 M. GONZALEZ</b>	ESP	Kawasaki ParkinGO Team	Kawasaki ZX-6R		<b>1'55.335</b>	1'55.788		<b>1'55.335</b>	1.240	0.169	158,471	28
9	<b>5 P. OETTL</b>	GER	Kawasaki Puccetti Racing	Kawasaki ZX-6R		<b>1'55.363</b>	1'55.489		<b>1'55.363</b>	1.268	0.028	158,432	32
10	<b>56 P. SEBESTYEN</b>	HUN	OXXO Yamaha Team Toth	Yamaha YZF R6		1'55.647	<b>1'55.477</b>		<b>1'55.477</b>	1.382	0.114	158,276	26
11	<b>22 F. FULIGNI</b>	ITA	MV Agusta Reparto Corse	MV Agusta F3 675		<b>1'55.804</b>	1'56.762		<b>1'55.804</b>	1.709	0.327	157,829	32
12	<b>99 D. WEBB</b>	GBR	WRP Wepol Racing	Yamaha YZF R6		1'56.087	<b>1'56.028</b>		<b>1'56.028</b>	1.933	0.224	157,524	30
13	<b>12 A. RUIZ CARRANZA</b>	ESP	EMPERADOR Racing Team	Yamaha YZF R6		1'56.411	<b>1'56.031</b>		<b>1'56.031</b>	1.936	0.003	157,520	24
14	<b>61 C. ONCU</b>	TUR	Turkish Racing Team	Kawasaki ZX-6R		1'56.863	<b>1'56.159</b>		<b>1'56.159</b>	2.064	0.128	157,346	15
15	<b>94 C. PEROLARI</b>	FRA	GMT94 Yamaha	Yamaha YZF R6		<b>1'56.192</b>	1'56.298		<b>1'56.192</b>	2.097	0.033	157,302	31
16	<b>6 M. HERRERA</b>	ESP	Alltogo Racing Team	Yamaha YZF R6		<b>1'56.287</b>	1'56.968		<b>1'56.287</b>	2.192	0.095	157,173	33
17	<b>9 G. HENDRA PRATAMA</b>	INA	bLU cRU WorldSSP by MS Racing	Yamaha YZF R6		<b>1'56.312</b>	1'57.479		<b>1'56.312</b>	2.217	0.025	157,139	21
18	<b>84 L. CRESSON</b>	BEL	OXXO Yamaha Team Toth	Yamaha YZF R6		<b>1'56.455</b>	1'56.663		<b>1'56.455</b>	2.360	0.143	156,946	31
19	<b>47 A. BASSANI</b>	ITA	Soradis Yamaha Motoxrcing	Yamaha YZF R6		<b>1'56.489</b>	1'56.917		<b>1'56.489</b>	2.394	0.034	156,901	35
20	<b>78 H. OKUBO</b>	JPN	Dynavolt Honda	Honda CBR600RR		1'57.032	<b>1'56.621</b>		<b>1'56.621</b>	2.526	0.132	156,723	26
21	<b>25 A. VERDOIA</b>	FRA	bLU cRU WorldSSP by MS Racing	Yamaha YZF R6		<b>1'56.662</b>	1'56.667		<b>1'56.662</b>	2.567	0.041	156,668	26
22	<b>83 L. EPIS</b>	AUS	MPM Routz Racing Team	Yamaha YZF R6		<b>1'56.760</b>	1'56.901		<b>1'56.760</b>	2.665	0.098	156,536	33
23	<b>2 L. MONTELLA</b>	ITA	DK MOTORSPORT	Yamaha YZF R6		1'57.459	<b>1'56.953</b>		<b>1'56.953</b>	2.858	0.193	156,278	33
24	<b>34 K. MANFREDI</b>	ITA	Alltogo Racing Team	Yamaha YZF R6		1'57.439	<b>1'57.224</b>		<b>1'57.224</b>	3.129	0.271	155,917	29
25	<b>52 P. HOBELSBERGER</b>	GER	Dynavolt Honda	Honda CBR600RR		<b>1'57.259</b>	1'57.327		<b>1'57.259</b>	3.164	0.035	155,870	27

\* WorldSSP Challenge

04/09/2020

These data/results cannot be reproduced, stored and/or transmitted in whole or in part by any manner of electronic, mechanical, photocopying, recording, broadcasting or otherwise now known or herein after developed without the previous express consent by the copyright owner, except for reproduction in daily press and regular printed publications on sale to the public within 60 days of the event related to those data/results and always provided that copyright symbol appears together as follows below.

© DORNA WSBK ORGANIZATION Srl 2020

FICR PERUGIA TIMING



Official Tyre Supplier



Official Timekeeper

**Pirelli Teruel Round, 4 - 6 September 2020**  
**Best Sectors & Speed Free Practice 2nd Session**

MotorLand Aragon 5.077 m

BEST LAP		
1	55 A. LOCATELLI	Yamaha YZF R6 1'54.095
2	3 R. DE ROSA	MV Agusta F3 675 1'54.871
3	32 I. VINALES	Yamaha YZF R6 1'55.166
4	44 L. MAHIAS	Kawasaki ZX-6R 1'55.215
5	16 J. CLUZEL	Yamaha YZF R6 1'55.228
6	38 H. SOOMER	Yamaha YZF R6 1'55.358
7	56 P. SEBESTYEN	Yamaha YZF R6 1'55.477
8	5 P. OETTL	Kawasaki ZX-6R 1'55.489
9	4 S. ODENDAAL	Yamaha YZF R6 1'55.604
10	81 M. GONZALEZ	Kawasaki ZX-6R 1'55.788
11	99 D. WEBB	Yamaha YZF R6 1'56.028
12	12 A. RUIZ CARRANZA	Yamaha YZF R6 1'56.031
13	61 C. ONCU	Kawasaki ZX-6R 1'56.159
14	94 C. PEROLARI	Yamaha YZF R6 1'56.298
15	78 H. OKUBO	Honda CBR600RR 1'56.621
16	84 L. CRESSON	Yamaha YZF R6 1'56.663
17	25 A. VERDOIA	Yamaha YZF R6 1'56.667
18	22 F. FULIGNI	MV Agusta F3 675 1'56.762
19	83 L. EPIS	Yamaha YZF R6 1'56.901
20	47 A. BASSANI	Yamaha YZF R6 1'56.917
21	2 L. MONTELLA	Yamaha YZF R6 1'56.953
22	6 M. HERRERA	Yamaha YZF R6 1'56.968
23	34 K. MANFREDI	Yamaha YZF R6 1'57.224
24	52 P. HOBELSBERGER	Honda CBR600RR 1'57.327
25	9 G. HENDRA PRATAMA	Yamaha YZF R6 1'57.479

SPEED		
1	32 I. VINALES	Yamaha YZF R6 268,7
2	12 A. RUIZ CARRANZA	Yamaha YZF R6 267,3
3	4 S. ODENDAAL	Yamaha YZF R6 266,7
4	25 A. VERDOIA	Yamaha YZF R6 266,0
5	44 L. MAHIAS	Kawasaki ZX-6R 266,0
6	55 A. LOCATELLI	Yamaha YZF R6 266,0
7	99 D. WEBB	Yamaha YZF R6 266,0
8	38 H. SOOMER	Yamaha YZF R6 265,4
9	16 J. CLUZEL	Yamaha YZF R6 265,4
10	5 P. OETTL	Kawasaki ZX-6R 264,7
11	3 R. DE ROSA	MV Agusta F3 675 264,7
12	9 G. HENDRA PRATAMA	Yamaha YZF R6 264,7
13	81 M. GONZALEZ	Kawasaki ZX-6R 263,4
14	6 M. HERRERA	Yamaha YZF R6 263,4
15	94 C. PEROLARI	Yamaha YZF R6 262,8
16	47 A. BASSANI	Yamaha YZF R6 262,8
17	83 L. EPIS	Yamaha YZF R6 262,8
18	56 P. SEBESTYEN	Yamaha YZF R6 262,1
19	78 H. OKUBO	Honda CBR600RR 261,5
20	22 F. FULIGNI	MV Agusta F3 675 261,5
21	34 K. MANFREDI	Yamaha YZF R6 261,5
22	84 L. CRESSON	Yamaha YZF R6 260,9
23	2 L. MONTELLA	Yamaha YZF R6 259,0
24	61 C. ONCU	Kawasaki ZX-6R 258,4
25	52 P. HOBELSBERGER	Honda CBR600RR 258,4

SEG. 1	
1	55 A. LOCATELLI 32.213
2	3 R. DE ROSA 32.551
3	32 I. VINALES 32.555
4	16 J. CLUZEL 32.561
5	56 P. SEBESTYEN 32.587
6	44 L. MAHIAS 32.608
7	5 P. OETTL 32.625
8	4 S. ODENDAAL 32.710
9	38 H. SOOMER 32.713
10	99 D. WEBB 32.744
11	81 M. GONZALEZ 32.792
12	94 C. PEROLARI 32.825
13	61 C. ONCU 32.839
14	12 A. RUIZ CARRANZA 32.941
15	78 H. OKUBO 32.968
16	22 F. FULIGNI 32.981
17	34 K. MANFREDI 32.984
18	2 L. MONTELLA 32.992
19	84 L. CRESSON 32.995
20	47 A. BASSANI 33.093
21	83 L. EPIS 33.106
22	9 G. HENDRA PRATAMA 33.126
23	25 A. VERDOIA 33.161
24	52 P. HOBELSBERGER 33.168
25	6 M. HERRERA 33.277

SEG. 2	
1	55 A. LOCATELLI 32.029
2	32 I. VINALES 32.114
3	3 R. DE ROSA 32.117
4	5 P. OETTL 32.244
5	16 J. CLUZEL 32.258
6	38 H. SOOMER 32.303
7	56 P. SEBESTYEN 32.320
8	44 L. MAHIAS 32.355
9	4 S. ODENDAAL 32.369
10	81 M. GONZALEZ 32.388
11	61 C. ONCU 32.395
12	12 A. RUIZ CARRANZA 32.449
13	99 D. WEBB 32.467
14	94 C. PEROLARI 32.522
15	78 H. OKUBO 32.633
16	84 L. CRESSON 32.647
17	22 F. FULIGNI 32.682
18	47 A. BASSANI 32.705
19	25 A. VERDOIA 32.737
20	83 L. EPIS 32.743
21	6 M. HERRERA 32.759
22	2 L. MONTELLA 32.806
23	34 K. MANFREDI 32.838
24	52 P. HOBELSBERGER 32.840
25	9 G. HENDRA PRATAMA 32.931

SEG. 3	
1	55 A. LOCATELLI 21.716
2	44 L. MAHIAS 21.800
3	38 H. SOOMER 21.834
4	3 R. DE ROSA 21.839
5	16 J. CLUZEL 21.948
6	32 I. VINALES 22.044
7	81 M. GONZALEZ 22.048
8	12 A. RUIZ CARRANZA 22.076
9	4 S. ODENDAAL 22.109
10	5 P. OETTL 22.118
11	56 P. SEBESTYEN 22.152
12	99 D. WEBB 22.172
13	78 H. OKUBO 22.190
14	2 L. MONTELLA 22.213
15	61 C. ONCU 22.223
16	94 C. PEROLARI 22.245
17	83 L. EPIS 22.276
18	47 A. BASSANI 22.278
19	25 A. VERDOIA 22.312
20	84 L. CRESSON 22.312
21	6 M. HERRERA 22.316
22	34 K. MANFREDI 22.360
23	22 F. FULIGNI 22.372
24	52 P. HOBELSBERGER 22.420
25	9 G. HENDRA PRATAMA 22.426

SEG. 4	
1	55 A. LOCATELLI 28.052
2	3 R. DE ROSA 28.152
3	5 P. OETTL 28.167
4	12 A. RUIZ CARRANZA 28.199
5	16 J. CLUZEL 28.217
6	32 I. VINALES 28.218
7	44 L. MAHIAS 28.291
8	4 S. ODENDAAL 28.309
9	38 H. SOOMER 28.342
10	56 P. SEBESTYEN 28.345
11	81 M. GONZALEZ 28.413
12	25 A. VERDOIA 28.456
13	6 M. HERRERA 28.458
14	47 A. BASSANI 28.468
15	22 F. FULIGNI 28.477
16	9 G. HENDRA PRATAMA 28.528
17	99 D. WEBB 28.540
18	61 C. ONCU 28.545
19	84 L. CRESSON 28.568
20	94 C. PEROLARI 28.625
21	34 K. MANFREDI 28.633
22	78 H. OKUBO 28.669
23	2 L. MONTELLA 28.704
24	83 L. EPIS 28.755
25	52 P. HOBELSBERGER 28.755

04/09/2020

These data/results cannot be reproduced, stored and/or transmitted in whole or in part by any manner of electronic, mechanical, photocopying, recording, broadcasting or otherwise now known or herein after developed without the previous express consent by the copyright owner, except for reproduction in daily press and regular printed publications on sale to the public within 60 days of the event related to those data/results and always provided that copyright symbol appears together as follows below.

© DORNA WSBK ORGANIZATION Srl 2020

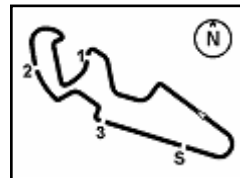
FICR PERUGIA TIMING



Official Tyre Supplier



Official Timekeeper



## Pirelli Teruel Round, 4 - 6 September 2020

### Ideal Times Free Practice 2nd Session

No.	Rider	Nat	Bike	Seg. 1	Seg. 2	Seg. 3	Seg. 4	Ideal Time		
				Diff. 1	Diff. 2	Diff. 3	Diff. 4	Best Lap	Pos.	Diff.
1	55 A. LOCATELLI	ITA	Yamaha YZF R6	<b>32.213</b>	<b>32.029</b> +0.061	<b>21.716</b> +0.024	<b>28.052</b>	<b>1'54.010</b> 1'54.095	1	0.085
2	3 R. DE ROSA	ITA	MV Agusta F3 675	32.551 +0.086	32.117 +0.067	21.839	28.152 +0.059	<b>1'54.659</b> 1'54.871	2	0.212
3	32 I. VINALES	ESP	Yamaha YZF R6	32.555 +0.038	32.114 +0.197	22.044	28.218	<b>1'54.931</b> 1'55.166	3	0.235
4	16 J. CLUZEL	FRA	Yamaha YZF R6	32.561	32.258 +0.025	21.948 +0.219	28.217	<b>1'54.984</b> 1'55.228	5	0.244
5	44 L. MAHIAS	FRA	Kawasaki ZX-6R	32.608	32.355 +0.161	21.800	28.291	<b>1'55.054</b> 1'55.215	4	0.161
6	5 P. OETTL	GER	Kawasaki ZX-6R	32.625	32.244	22.118 +0.251	28.167 +0.084	<b>1'55.154</b> 1'55.489	8	0.335
7	38 H. SOOMER	EST	Yamaha YZF R6	32.713 +0.166	32.303	21.834	28.342	<b>1'55.192</b> 1'55.358	6	0.166
8	56 P. SEBESTYEN	HUN	Yamaha YZF R6	32.587	32.320	22.152 +0.073	28.345	<b>1'55.404</b> 1'55.477	7	0.073
9	4 S. ODENDAAL	RSA	Yamaha YZF R6	32.710 +0.035	32.369 +0.059	22.109 +0.013	28.309	<b>1'55.497</b> 1'55.604	9	0.107
10	81 M. GONZALEZ	ESP	Kawasaki ZX-6R	32.792 +0.034	32.388	22.048 +0.113	28.413	<b>1'55.641</b> 1'55.788	10	0.147
11	12 A. RUIZ CARRANZA	ESP	Yamaha YZF R6	32.941 +0.138	32.449 +0.001	22.076	28.199 +0.227	<b>1'55.665</b> 1'56.031	12	0.366
12	99 D. WEBB	GBR	Yamaha YZF R6	32.744 +0.104	32.467	22.172	28.540 +0.001	<b>1'55.923</b> 1'56.028	11	0.105
13	61 C. ONCU	TUR	Kawasaki ZX-6R	32.839	32.395	22.223	28.545 +0.157	<b>1'56.002</b> 1'56.159	13	0.157
14	94 C. PEROLARI	FRA	Yamaha YZF R6	32.825 +0.039	32.522 +0.042	22.245	28.625	<b>1'56.217</b> 1'56.298	14	0.081
15	78 H. OKUBO	JPN	Honda CBR600RR	32.968	32.633	22.190 +0.061	28.669 +0.100	<b>1'56.460</b> 1'56.621	15	0.161
16	22 F. FULIGNI	ITA	MV Agusta F3 675	32.981	32.682 +0.076	22.372 +0.041	28.477 +0.133	<b>1'56.512</b> 1'56.762	18	0.250
17	84 L. CRESSON	BEL	Yamaha YZF R6	32.995 +0.031	32.647	22.312 +0.049	28.568 +0.061	<b>1'56.522</b> 1'56.663	16	0.141
18	47 A. BASSANI	ITA	Yamaha YZF R6	33.093 +0.206	32.705 +0.094	22.278	28.468 +0.073	<b>1'56.544</b> 1'56.917	20	0.373
19	25 A. VERDOIA	FRA	Yamaha YZF R6	33.161	32.737	22.312	28.456 +0.001	<b>1'56.666</b> 1'56.667	17	0.001
20	2 L. MONTELLA	ITA	Yamaha YZF R6	32.992 +0.100	32.806 +0.021	22.213	28.704 +0.117	<b>1'56.715</b> 1'56.953	21	0.238
21	6 M. HERRERA	ESP	Yamaha YZF R6	33.277 +0.060	32.759	22.316	28.458 +0.098	<b>1'56.810</b> 1'56.968	22	0.158
22	34 K. MANFREDI	ITA	Yamaha YZF R6	32.984 +0.343	32.838	22.360 +0.066	28.633	<b>1'56.815</b> 1'57.224	23	0.409
23	83 L. EPIS	AUS	Yamaha YZF R6	33.106	32.743 +0.009	22.276	28.755 +0.012	<b>1'56.880</b> 1'56.901	19	0.021
24	9 G. HENDRA PRATAMA	INA	Yamaha YZF R6	33.126 +0.019	32.931 +0.149	22.426	28.528 +0.300	<b>1'57.011</b> 1'57.479	25	0.468
25	52 P. HOBELSBERGER	GER	Honda CBR600RR	33.168 +0.144	32.840	22.420	28.755	<b>1'57.183</b> 1'57.327	24	0.144
<b>Overall Ideal Time</b>				<b>32.213</b>	<b>32.029</b>	<b>21.716</b>	<b>28.052</b>	<b>1'54.010</b>		

04/09/2020

These data/results cannot be reproduced, stored and/or transmitted in whole or in part by any manner of electronic, mechanical, photocopying, recording, broadcasting or otherwise now known or herein after developed without the previous express consent by the copyright owner, except for reproduction in daily press and regular printed publications on sale to the public within 60 days of the event related to those data/results and always provided that copyright symbol appears together as follows below.

© DORNA WSBK ORGANIZATION Srl 2020

FICR PERUGIA TIMING



Official Tyre Supplier

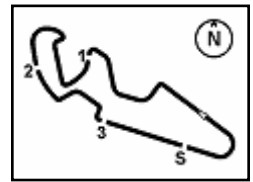


Official Timekeeper









Pirelli Teruel Round, 4 - 6 September 2020 Chronological Analysis Free Practice 2nd Session

MotorLand Aragon 5.077 m

3 / 4

Table with columns for rider name, lap, and segment times for riders 5-17.

18° 22 F. FULIGNI (1'56.762)

Detailed table for rider 22 F. FULIGNI showing lap times, segment times, km/h, and local times for laps 1-18.

15° 78 H. OKUBO (1'56.621)

Detailed table for rider 78 H. OKUBO showing lap times, segment times, km/h, and local times for laps 1-16.

19° 83 L. EPIS (1'56.901)

Detailed table for rider 83 L. EPIS showing lap times, segment times, km/h, and local times for laps 1-18.

16° 84 L. CRESSON (1'56.663)

Detailed table for rider 84 L. CRESSON showing lap times, segment times, km/h, and local times for laps 1-17.

20° 47 A. BASSANI (1'56.917)

Detailed table for rider 47 A. BASSANI showing lap times, segment times, km/h, and local times for laps 1-12.

17° 25 A. VERDOIA (1'56.667)

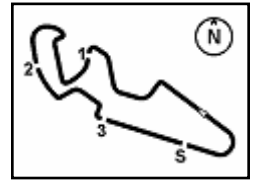
Detailed table for rider 25 A. VERDOIA showing lap times, segment times, km/h, and local times for laps 1-8.

04/09/2020 P = Pits In/Out - C = Lap Time Cancelled

These data/results cannot be reproduced, stored and/or transmitted in whole or in part by any manner of electronic, mechanical, photocopying, recording, broadcasting or otherwise now known or herein after developed without the previous express consent by the copyright owner, except for reproduction in daily press and regular printed publications on sale to the public within 60 days of the event related to those data/results and always provided that copyright symbol appears together as follows below.

© DORNA WSBK ORGANIZATION Srl 2020





### Pirelli Teruel Round, 4 - 6 September 2020

#### Chronological Analysis Free Practice 2nd Session

4 / 4

13	33.093	32.843	22.504	28.707	1'57.147C	255,9	16:32'54.894
14	38.590	33.764	23.546	34.976	2'10.876P	254,7	16:35'05.770
15	5'02.251	33.962	23.622	28.761	6'28.596P	259,6	16:41'34.366
16	33.421	32.856	22.341	28.771	1'57.389	253,5	16:43'31.755
17	33.454	32.879	22.550	28.800	1'57.683C	256,5	16:45'29.438

16	33.327	32.838	22.426	28.633	1'57.224	261,5	16:46'34.480
----	--------	--------	--------	--------	----------	-------	--------------

21° 2 L. MONTELLA (1'56.953)							
Lap	Seg.1	Seg.2	Seg.3	Seg.4	Lap Time	km/h	Local Time
1		35.638	24.143	29.489		257,1	16:02'10.843
2	33.775	33.506	22.989	29.254	1'59.524	257,8	16:04'10.367
3	33.511	32.833	22.573	28.888	1'57.805	257,8	16:06'08.172
4	33.396	32.849	22.336	28.857	1'57.438	259,0	16:08'05.610
5	33.916	33.271	22.729	29.060	1'58.976	258,4	16:10'04.586
6	33.178	32.946	22.447	29.027	1'57.598	259,0	16:12'02.184
7	43.745	35.223	23.740	36.596	2'19.304P	246,6	16:14'21.488
8	12'53.092	36.540	22.562	28.915	14'21.109P	257,1	16:28'42.597
9	35.206	35.012	22.484	28.812	2'01.514	259,0	16:30'44.111
10	33.102	32.806	22.333	28.836	1'57.077	255,9	16:32'41.188
11	33.771	36.457	22.504	28.704	2'01.436	259,0	16:34'42.624
12	33.092	32.827	22.213	28.821	1'56.953	257,8	16:36'39.577
13	32.992	32.911	22.529	28.735	1'57.167	258,4	16:38'36.744
14	43.124	33.799	22.457	35.567	2'14.947P	248,3	16:40'51.691
15	1'32.924	35.141	22.490	29.182	2'59.737P	252,3	16:43'51.428
16	33.019	33.063	22.390	28.940	1'57.412	257,1	16:45'48.840

24° 52 P. HOBELSBERGER (1'57.327)							
Lap	Seg.1	Seg.2	Seg.3	Seg.4	Lap Time	km/h	Local Time
1		35.252	23.719	29.484		255,9	16:02'16.613
2	33.854	33.528	22.663	28.781	1'58.826	258,4	16:04'15.439
3	33.168	33.103	22.423	28.969	1'57.663	257,1	16:06'13.102
4	33.312	32.840	22.420	28.755	1'57.327	258,4	16:08'10.429
5	33.318	1'58.027	38.897	38.353	3'48.595P	244,9	16:11'59.024
6	13'34.250	37.266	23.420	29.113	15'04.049P	257,8	16:27'03.073
7	37.625	34.463	30.338	29.381	2'11.807	255,3	16:29'14.880
8	33.784	33.423	22.575	29.002	1'58.784	255,9	16:31'13.664
9	33.346	33.180	22.529	29.078	1'58.133	254,1	16:33'11.797
10	33.623	33.237	31.794	29.268	2'07.922	252,9	16:35'19.719
11	33.281	33.515	24.583	35.645	2'07.024P	250,6	16:37'26.743
12	4'57.514	35.401	23.319	29.274	6'25.508P	254,1	16:43'52.251
13	33.452	33.219	22.628	28.968	1'58.267	255,9	16:45'50.518

25° 9 G. HENDRA PRATAMA (1'57.479)							
Lap	Seg.1	Seg.2	Seg.3	Seg.4	Lap Time	km/h	Local Time
1		34.897	22.821	28.947		261,5	16:02'26.300
2	1'37.805	33.934	23.424	35.577	3'10.740P	258,4	16:05'37.040
3	11'52.136	33.643	22.833	29.228	13'17.840P	257,8	16:18'54.880
4	33.126	33.313	22.727	29.002	1'58.168	258,4	16:20'53.048
5	33.997	35.202	22.701	28.811	2'00.711	261,5	16:22'53.759
6	33.362	33.218	22.627	28.716	1'57.923	264,7	16:24'51.682
7	35.383	38.176	23.855	35.987	2'13.401P	261,5	16:27'05.083
8	11'29.135	33.892	22.902	28.863	12'54.792P	257,8	16:39'59.875
9	33.145	33.080	22.426	28.828	1'57.479	259,6	16:41'57.354
10	33.330	32.931	22.515	28.803	1'57.579	259,0	16:43'54.933
11	33.134	33.088	22.982	28.528	1'57.732	262,1	16:45'52.665

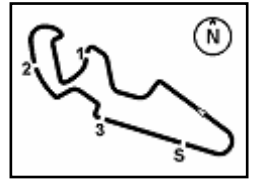
22° 6 M. HERRERA (1'56.968)							
Lap	Seg.1	Seg.2	Seg.3	Seg.4	Lap Time	km/h	Local Time
1		34.086	22.956	28.748		260,2	16:02'28.535
2	33.440	33.199	22.371	28.540	1'57.550	262,1	16:04'26.085
3	33.374	32.870	22.547	28.628	1'57.419	259,6	16:06'23.504
4	33.337	32.759	22.316	28.556	1'56.968	260,2	16:08'20.472
5	35.936	33.767	23.324	36.416	2'09.443P	260,9	16:10'29.915
6	5'12.753	34.653	22.719	28.869	6'38.994P	255,9	16:17'08.909
7	33.700	33.742	22.678	37.174	2'07.294P	252,3	16:19'16.203
8	5'58.355	38.220	23.479	29.314	7'29.368P	250,6	16:26'45.571
9	35.054	34.007	22.618	28.567	2'00.246	263,4	16:28'45.817
10	33.525	33.140	22.393	28.673	1'57.731	260,2	16:30'43.548
11	33.553	36.063	22.685	28.552	2'00.853	260,9	16:32'44.401
12	33.413	33.083	22.357	28.458	1'57.311	262,1	16:34'41.712
13	33.277	32.881	22.376	28.709	1'57.243	260,2	16:36'38.955
14	33.390	33.035	22.343	28.671	1'57.439	257,1	16:38'36.394
15	33.789	33.135	22.494	28.776	1'58.194	258,4	16:40'34.588
16	33.320	33.019	22.421	28.723	1'57.483	258,4	16:42'32.071
17	33.424	32.841	22.424	28.838	1'57.527	259,0	16:44'29.598
18	33.359	32.966	22.430	28.591	1'57.346	259,0	16:46'26.944

23° 34 K. MANFREDI (1'57.224)							
Lap	Seg.1	Seg.2	Seg.3	Seg.4	Lap Time	km/h	Local Time
1		34.117	22.687	30.843		257,1	16:02'29.711
2	33.370	33.093	22.395	28.933	1'57.791	258,4	16:04'27.502
3	33.256	32.974	22.583	28.769	1'57.582	259,0	16:06'25.084
4	33.136	32.919	22.360	34.525	2'02.940P	256,5	16:08'28.024
5	6'47.763	33.697	22.608	28.858	8'12.926P	258,4	16:16'40.950
6	33.070	33.093	22.375	29.278	1'57.816	252,9	16:18'38.766
7	35.085	35.131	23.988	36.472	2'10.676P	231,8	16:20'49.442
8	8'21.551	35.646	22.605	29.041	9'48.843P	256,5	16:30'38.285
9	33.219	33.097	22.472	28.941	1'57.729	256,5	16:32'36.014
10	33.171	33.659	22.961	28.735	1'58.526	259,6	16:34'34.540
11	33.195	32.923	22.404	28.825	1'57.347	256,5	16:36'31.887
12	35.592	34.227	24.357	29.030	2'03.206	252,3	16:38'35.093
13	36.309	35.331	22.577	28.956	2'03.173	254,1	16:40'38.266
14	32.984	32.939	22.665	29.073	1'57.661	254,1	16:42'35.927
15	33.400	33.176	23.584	31.169	2'01.329	210,5	16:44'37.256

04/09/2020 P = Pits In/Out - C = Lap Time Cancelled

These data/results cannot be reproduced, stored and/or transmitted in whole or in part by any manner of electronic, mechanical, photocopying, recording, broadcasting or otherwise now known or herein after developed without the previous express consent by the copyright owner, except for reproduction in daily press and regular printed publications on sale to the public within 60 days of the event related to those data/results and always provided that copyright symbol appears together as follows below.

© DORNA WSBK ORGANIZATION Srl 2020



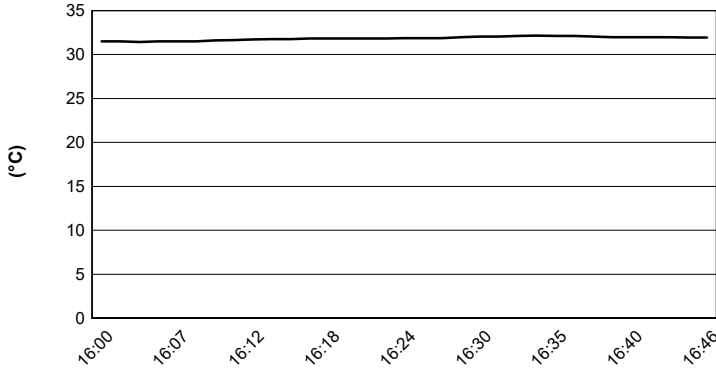
MotorLand Aragon 5.077 m

## Pirelli Teruel Round, 4 - 6 September 2020

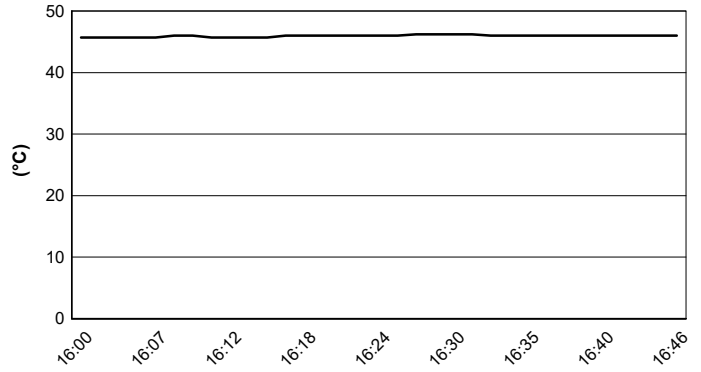
### Weather Report Free Practice 2nd Session

Session started 16:00 - Session ended 16:47

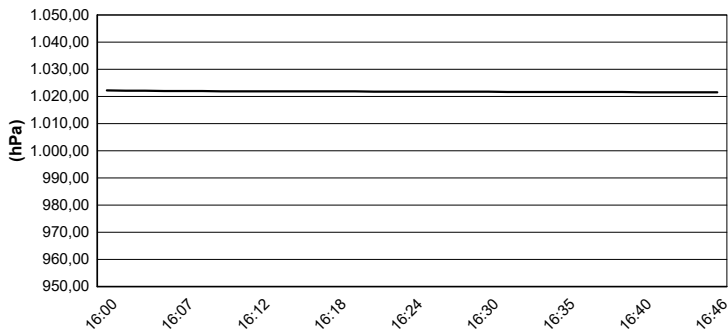
#### Air Temperature



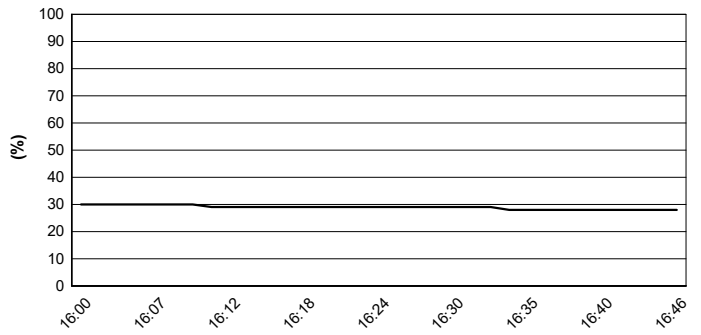
#### Track Temperature



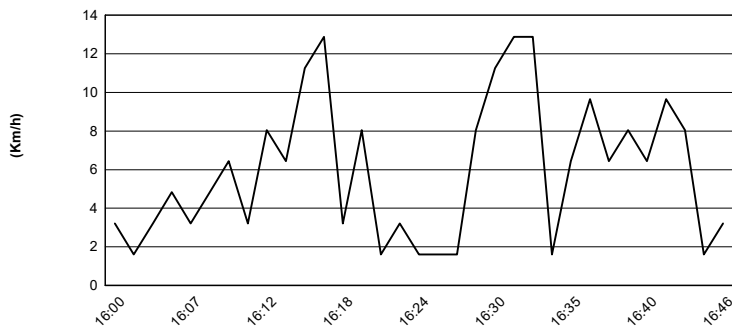
#### Air Pressure



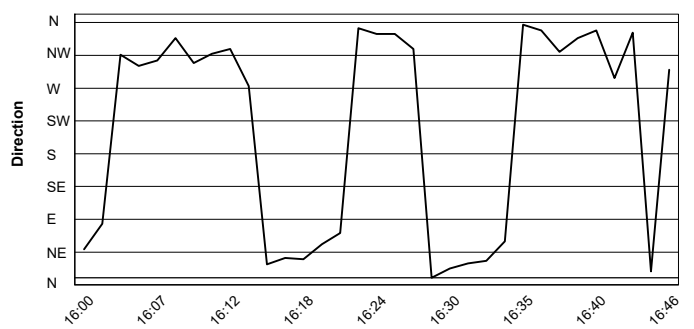
#### Humidity



#### Wind Speed



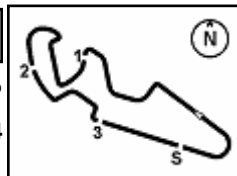
#### Wind Direction



04/09/2020

These data/results cannot be reproduced, stored and/or transmitted in whole or in part by any manner of electronic, mechanical, photocopying, recording, broadcasting or otherwise now known or herein after developed without the previous express consent by the copyright owner, except for reproduction in daily press and regular printed publications on sale to the public within 60 days of the event related to those data/results and always provided that copyright symbol appears together as follows below.

© DORNA WSBK ORGANIZATION Srl 2020



## Pirelli Teruel Round, 4 - 6 September 2020

### Best Laps & Speeds

No.	Rider Bike	Nat	Best Lap		FP1		FP2												
			LL	SPD	LL	SPD	LL	SPD											
1	<b>55 A. LOCATELLI</b> Yamaha YZF R6	ITA	<b>1'54.095</b> 32 270,0		1'54.171 16 <b>270,0</b>		<b>1'54.095</b> 16 266,0												
2	<b>3 R. DE ROSA</b> MV Agusta F3 675	ITA	<b>1'54.632</b> 32 267,3		<b>1'54.632</b> 15 <b>267,3</b>		1'54.871 17 264,7												
3	<b>44 L. MAHIAS</b> Kawasaki ZX-6R	FRA	<b>1'54.661</b> 23 266,0		<b>1'54.661</b> 7 261,5		1'55.215 16 <b>266,0</b>												
4	<b>38 H. SOOMER</b> Yamaha YZF R6	EST	<b>1'55.032</b> 27 269,3		<b>1'55.032</b> 14 <b>269,3</b>		1'55.358 13 265,3												
5	<b>16 J. CLUZEL</b> Yamaha YZF R6	FRA	<b>1'55.092</b> 29 266,6		<b>1'55.092</b> 14 <b>266,6</b>		1'55.228 15 265,3												
6	<b>4 S. ODENDAAL</b> Yamaha YZF R6	RSA	<b>1'55.139</b> 31 266,6		<b>1'55.139</b> 16 266,0		1'55.604 15 <b>266,6</b>												
7	<b>32 I. VINALES</b> Yamaha YZF R6	ESP	<b>1'55.166</b> 13 268,6				<b>1'55.166</b> 13 <b>268,6</b>												
8	<b>81 M. GONZALEZ</b> Kawasaki ZX-6R	ESP	<b>1'55.335</b> 28 263,4		<b>1'55.335</b> 14 <b>263,4</b>		1'55.788 14 <b>263,4</b>												
9	<b>5 P. OETTL</b> Kawasaki ZX-6R	GER	<b>1'55.363</b> 32 268,6		<b>1'55.363</b> 16 <b>268,6</b>		1'55.489 16 264,7												
10	<b>56 P. SEBESTYEN</b> Yamaha YZF R6	HUN	<b>1'55.477</b> 26 262,1		1'55.647 13 261,5		<b>1'55.477</b> 13 <b>262,1</b>												
11	<b>22 F. FULIGNI</b> MV Agusta F3 675	ITA	<b>1'55.804</b> 32 265,3		<b>1'55.804</b> 15 <b>265,3</b>		1'56.762 17 261,5												
12	<b>99 D. WEBB</b> Yamaha YZF R6	GBR	<b>1'56.028</b> 30 266,0		1'56.087 16 265,3		<b>1'56.028</b> 14 <b>266,0</b>												
13	<b>12 A. RUIZ CARRANZA</b> Yamaha YZF R6	ESP	<b>1'56.031</b> 24 267,3		1'56.411 7 263,4		<b>1'56.031</b> 17 <b>267,3</b>												
14	<b>61 C. ONCU</b> Kawasaki ZX-6R	TUR	<b>1'56.159</b> 15 258,3		1'56.863 1 257,7		<b>1'56.159</b> 14 <b>258,3</b>												
15	<b>94 C. PEROLARI</b> Yamaha YZF R6	FRA	<b>1'56.192</b> 31 263,4		<b>1'56.192</b> 15 <b>263,4</b>		1'56.298 16 262,7												
16	<b>6 M. HERRERA</b> Yamaha YZF R6	ESP	<b>1'56.287</b> 33 266,6		<b>1'56.287</b> 16 <b>266,6</b>		1'56.968 17 263,4												
17	<b>9 G. HENDRA PRATAMA</b> Yamaha YZF R6	INA	<b>1'56.312</b> 21 267,9		<b>1'56.312</b> 11 <b>267,9</b>		1'57.479 10 264,7												
18	<b>84 L. CRESSON</b> Yamaha YZF R6	BEL	<b>1'56.455</b> 31 262,1		<b>1'56.455</b> 15 <b>262,1</b>		1'56.663 16 260,8												
19	<b>47 A. BASSANI</b> Yamaha YZF R6	ITA	<b>1'56.489</b> 35 263,4		<b>1'56.489</b> 19 <b>263,4</b>		1'56.917 16 262,7												
20	<b>78 H. OKUBO</b> Honda CBR600RR	JPN	<b>1'56.621</b> 26 264,7		1'57.032 11 <b>264,7</b>		<b>1'56.621</b> 15 261,5												
21	<b>25 A. VERDOIA</b> Yamaha YZF R6	FRA	<b>1'56.662</b> 26 270,0		<b>1'56.662</b> 13 <b>270,0</b>		1'56.667 13 266,0												
22	<b>83 L. EPIS</b> Yamaha YZF R6	AUS	<b>1'56.760</b> 33 262,7		<b>1'56.760</b> 16 262,1		1'56.901 17 <b>262,7</b>												
23	<b>2 L. MONTELLA</b> Yamaha YZF R6	ITA	<b>1'56.953</b> 33 262,1		1'57.459 18 <b>262,1</b>		<b>1'56.953</b> 15 258,9												
24	<b>34 K. MANFREDI</b> Yamaha YZF R6	ITA	<b>1'57.224</b> 29 264,7		1'57.439 14 <b>264,7</b>		<b>1'57.224</b> 15 261,5												
25	<b>52 P. HOBELSBERGER</b> Honda CBR600RR	GER	<b>1'57.259</b> 27 260,8		<b>1'57.259</b> 15 <b>260,8</b>		1'57.327 12 258,3												

04/09/2020

These data/results cannot be reproduced, stored and/or transmitted in whole or in part by any manner of electronic, mechanical, photocopying, recording, broadcasting or otherwise now known or herein after developed without the previous express consent by the copyright owner, except for reproduction in daily press and regular printed publications on sale to the public within 60 days of the event related to those data/results and always provided that copyright symbol appears together as follows below.

© DORNA WSBK ORGANIZATION Srl 2020

FICR PERUGIA TIMING



Official Tyre Supplier



Official Timekeeper