

## Pirelli Teruel Round, 4 - 6 September 2020

### Results Free Practice 3rd Session

MotorLand Aragon 5.077 m

1 / 2

No.	Rider	Nat	Team	Bike	Class	Time	Gap	Rel.	Laps	Speed	
										Avg	Max
1	55 A. LOCATELLI	ITA	BARDAHL Evan Bros. WorldSSP Team	Yamaha YZF R6		<b>1'53.030</b>			9	161,702	<b>271,4</b>
2	5 P. OETTL	GER	Kawasaki Puccetti Racing	Kawasaki ZX-6R		<b>1'53.755</b>	0.725	0.725	8	160,672	<b>268,0</b>
3	3 R. DE ROSA	ITA	MV Agusta Reparto Corse	MV Agusta F3 675		<b>1'53.833</b>	0.803	0.078	9	160,562	<b>267,3</b>
4	16 J. CLUZEL	FRA	GMT94 Yamaha	Yamaha YZF R6		<b>1'53.989</b>	0.959	0.156	8	160,342	<b>269,3</b>
5	61 C. ONCU	TUR	Turkish Racing Team	Kawasaki ZX-6R		<b>1'54.476</b>	1.446	0.487	7	159,660	<b>272,7</b>
6	94 C. PEROLARI	FRA	GMT94 Yamaha	Yamaha YZF R6		<b>1'54.543</b>	1.513	0.067	8	159,566	<b>270,0</b>
7	32 I. VINALES	ESP	Kallio Racing	Yamaha YZF R6		<b>1'54.543</b>	1.513	0.000	8	159,566	<b>275,5</b>
8	4 S. ODENDAAL	RSA	EAB Ten Kate Racing	Yamaha YZF R6		<b>1'54.733</b>	1.703	0.190	10	159,302	<b>271,4</b>
9	81 M. GONZALEZ	ESP	Kawasaki ParkinGO Team	Kawasaki ZX-6R		<b>1'54.749</b>	1.719	0.016	10	159,280	<b>270,7</b>
10	38 H. SOOMER	EST	Kallio Racing	Yamaha YZF R6		<b>1'54.871</b>	1.841	0.122	8	159,111	<b>268,7</b>
11	56 P. SEBESTYEN	HUN	OXXO Yamaha Team Toth	Yamaha YZF R6		<b>1'55.128</b>	2.098	0.257	8	158,755	<b>272,0</b>
12	25 A. VERDOIA	FRA	bLU cRU WorldSSP by MS Racing	Yamaha YZF R6		<b>1'55.385</b>	2.355	0.257	7	158,402	<b>273,4</b>
13	99 D. WEBB	GBR	WRP Wepol Racing	Yamaha YZF R6		<b>1'55.611</b>	2.581	0.226	9	158,092	<b>267,3</b>
14	22 F. FULIGNI	ITA	MV Agusta Reparto Corse	MV Agusta F3 675		<b>1'55.658</b>	2.628	0.047	8	158,028	<b>263,4</b>
15	83 L. EPIS	AUS	MPM Routz Racing Team	Yamaha YZF R6		<b>1'55.821</b>	2.791	0.163	8	157,806	<b>260,2</b>
16	78 H. OKUBO	JPN	Dynavolt Honda	Honda CBR600RR		<b>1'55.959</b>	2.929	0.138	8	157,618	<b>268,7</b>
17	47 A. BASSANI	ITA	Soradis Yamaha Motoxtracing	Yamaha YZF R6	*	<b>1'56.083</b>	3.053	0.124	10	157,449	<b>269,3</b>
18	34 K. MANFREDI	ITA	Altogoo Racing Team	Yamaha YZF R6	*	<b>1'56.101</b>	3.071	0.018	10	157,425	<b>266,7</b>
19	52 P. HOBELSBERGER	GER	Dynavolt Honda	Honda CBR600RR		<b>1'56.103</b>	3.073	0.002	8	157,422	<b>267,3</b>
20	12 A. RUIZ CARRANZA	ESP	EMPERADOR Racing Team	Yamaha YZF R6	*	<b>1'56.143</b>	3.113	0.040	8	157,368	<b>271,4</b>
21	84 L. CRESSON	BEL	OXXO Yamaha Team Toth	Yamaha YZF R6		<b>1'56.233</b>	3.203	0.090	10	157,246	<b>264,7</b>
22	2 L. MONTELLA	ITA	DK MOTORSPORT	Yamaha YZF R6	*	<b>1'56.399</b>	3.369	0.166	8	157,022	<b>266,7</b>
23	6 M. HERRERA	ESP	Altogoo Racing Team	Yamaha YZF R6		<b>1'56.468</b>	3.438	0.069	9	156,929	<b>271,4</b>
24	9 G. HENDRA PRATAMA	INA	bLU cRU WorldSSP by MS Racing	Yamaha YZF R6		<b>1'56.495</b>	3.465	0.027	8	156,893	<b>271,4</b>
----- Out 107% in this Session -----											
25	44 L. MAHIAS	FRA	Kawasaki Puccetti Racing	Kawasaki ZX-6R					0		

Qualifying Lap Time (107% of 1'53.030): 2'00.943

\* WorldSSP Challenge

AIR	Humidity:	73%	Temp:	20°C
TRACK	Condition:	Dry	Temp:	25°C

Records	Pole (QP)	2015 J.Cluzel	1'53.138	161,550	Km/h
	Race (RC)	2015 P.Jacobsen	1'54.605	159,480	Km/h
	All Times (QP)	2015 J.Cluzel	1'53.138	161,550	Km/h

Start 05/09/2020 09:30 End 09:52 The results are provisional until the end of the time limit for protests and appeals and the completion of the technical checks.

These data/results cannot be reproduced, stored and/or transmitted in whole or in part by any manner of electronic, mechanical, photocopying, recording, broadcasting or otherwise now known or herein after developed without the previous express consent by the copyright owner, except for reproduction in daily press and regular printed publications on sale to the public within 60 days of the event related to those data/results and always provided that copyright symbol appears together as follows below.

© DORNA WSBK ORGANIZATION Srl 2020

## Pirelli Teruel Round, 4 - 6 September 2020

### Results Free Practice 3rd Session

MotorLand Aragon 5.077 m

2 / 2

#### Session Highlights

Local Time	No. Rider	Description
09.29.00	44 L. MAHIAS	is not allowed to participate to FP3 (Art.1.21.2)
09.30.00		Start
09.30.08		WorldSSP Pit Intervention Time: 1min 11secs
09.35.05	99 D. WEBB	Current Lap Cancelled - Exceeded Track Limits - Turn 3
09.35.41	81 M. GONZALEZ	On Asphalt - Re-Joined - Turn 12
09.38.34	32 I. VINALES	Current Lap Cancelled - Exceeded Track Limits - Turn 11
09.38.58	78 H. OKUBO	On Asphalt - Re-Joined - Turn 1
09.38.58	4 S. ODENDAAL	On Asphalt - Re-Joined - Turn 1
09.39.07	2 L. MONTELLA	Lap Cancelled (1'58.087) - Exceeded Track Limits - Turn 16
09.39.33	83 L. EPIS	On Asphalt - Re-Joined - Turn 10
09.39.45	81 M. GONZALEZ	On Asphalt - Re-Joined - Turn 12
09.39.59	34 K. MANFREDI	On Asphalt - Re-Joined - Turn 12
09.40.35	55 A. LOCATELLI	On Asphalt - Re-Joined - Turn 17
09.41.30	55 A. LOCATELLI	On Asphalt - Re-Joined - Turn 7
09.41.35	32 I. VINALES	On Asphalt - Re-Joined - Turn 12
09.41.36	94 C. PEROLARI	On Asphalt - Re-Joined - Turn 12
09.41.45	78 H. OKUBO	On Asphalt - Re-Joined - Turn 12
09.42.30	12 A. RUIZ CARRANZA	On Asphalt - Re-Joined - Turn 1
09.42.30	84 L. CRESSON	On Asphalt - Re-Joined - Turn 1
09.43.28	34 K. MANFREDI	On Asphalt - Re-Joined - Turn 12
09.44.54	12 A. RUIZ CARRANZA	On Asphalt - Re-Joined - Turn 6
09.46.09	12 A. RUIZ CARRANZA	On Asphalt - Re-Joined - Turn 16
09.46.28	12 A. RUIZ CARRANZA	On Asphalt - Re-Joined - Turn 1
09.46.28	25 A. VERDOIA	On Asphalt - Re-Joined - Turn 1
09.46.58	56 P. SEBESTYEN	Lap Cancelled (2'06.185) - Exceeded Track Limits - Turn 11
09.47.23	5 P. OETTL	Lap Cancelled (4'20.703) - Exceeded Track Limits - Turn 11
09.48.23	61 C. ONCU	Technical Problem - Turn 1
09.48.36	61 C. ONCU	Re-joined
09.48.45	83 L. EPIS	On Asphalt - Re-Joined - Turn 12
09.49.22		New All Time Lap Record
09.50.24	2 L. MONTELLA	Lap Cancelled (2'05.543) - Exceeded Track Limits - Turn 11
09.52.15		End Of Session

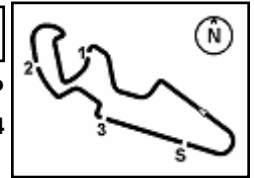
#### Fastest Laps Sequence

No.	Rider	Nat	Team	Bike	Local Time	Time	Gap	Avg
83	L. EPIS	AUS	MPM Routz Racing Team	Yamaha YZF R6	09:33'55.093	<b>1'57.841</b>		155,101
55	A. LOCATELLI	ITA	BARDAHL Evan Bros. WorldSSP Team	Yamaha YZF R6	09:33'58.976	<b>1'56.975</b>	-0.866	156,249
47	A. BASSANI	ITA	Soradis Yamaha Motoxrcing	Yamaha YZF R6	09:34'00.332	<b>1'56.931</b>	-0.044	156,308
94	C. PEROLARI	FRA	GMT94 Yamaha	Yamaha YZF R6	09:34'04.551	<b>1'56.364</b>	-0.567	157,069
61	C. ONCU	TUR	Turkish Racing Team	Kawasaki ZX-6R	09:34'04.829	<b>1'55.760</b>	-0.604	157,889
32	I. VINALES	ESP	Kallio Racing	Yamaha YZF R6	09:34'14.627	<b>1'54.543</b>	-1.217	159,566
55	A. LOCATELLI	ITA	BARDAHL Evan Bros. WorldSSP Team	Yamaha YZF R6	09:38'02.774	<b>1'54.527</b>	-0.016	159,589
3	R. DE ROSA	ITA	MV Agusta Reparto Corse	MV Agusta F3 675	09:43'37.058	<b>1'54.148</b>	-0.379	160,118
3	R. DE ROSA	ITA	MV Agusta Reparto Corse	MV Agusta F3 675	09:45'31.075	<b>1'54.017</b>	-0.131	160,302
55	A. LOCATELLI	ITA	BARDAHL Evan Bros. WorldSSP Team	Yamaha YZF R6	09:47'15.211	<b>1'53.593</b>	-0.424	160,901
55	A. LOCATELLI	ITA	BARDAHL Evan Bros. WorldSSP Team	Yamaha YZF R6	09:49'08.241	<b>1'53.030</b>	-0.563	161,702

Start 09:30 End 09:52 The results are provisional until the end of the time limit for protests and appeals and the completion of the technical checks.

These data/results cannot be reproduced, stored and/or transmitted in whole or in part by any manner of electronic, mechanical, photocopying, recording, broadcasting or otherwise now known or herein after developed without the previous express consent by the copyright owner, except for reproduction in daily press and regular printed publications on sale to the public within 60 days of the event related to those data/results and always provided that copyright symbol appears together as follows below.

© DORNA WSBK ORGANIZATION Srl 2020



## Pirelli Teruel Round, 4 - 6 September 2020

### Free Practices Combined Results

MotorLand Aragon 5.077 m

No.	Rider	Nat	Team	Bike	Class	FP1	FP2	FP3	Time	Gap	Rel.	Avg	LL
1	<b>55 A. LOCATELLI</b>	ITA	BARDAHL Evan Bros. WorldSSP Team	Yamaha YZF R6		1'54.171	1'54.095	<b>1'53.030</b>	<b>1'53.030</b>			161,702	41
2	<b>5 P. OETTL</b>	GER	Kawasaki Puccetti Racing	Kawasaki ZX-6R		1'55.363	1'55.489	<b>1'53.755</b>	<b>1'53.755</b>	0.725	0.725	160,672	40
3	<b>3 R. DE ROSA</b>	ITA	MV Agusta Reparto Corse	MV Agusta F3 675		1'54.632	1'54.871	<b>1'53.833</b>	<b>1'53.833</b>	0.803	0.078	160,562	41
4	<b>16 J. CLUZEL</b>	FRA	GMT94 Yamaha	Yamaha YZF R6		1'55.092	1'55.228	<b>1'53.989</b>	<b>1'53.989</b>	0.959	0.156	160,342	37
5	<b>61 C. ONCU</b>	TUR	Turkish Racing Team	Kawasaki ZX-6R		1'56.863	1'56.159	<b>1'54.476</b>	<b>1'54.476</b>	1.446	0.487	159,660	22
6	<b>94 C. PEROLARI</b>	FRA	GMT94 Yamaha	Yamaha YZF R6		1'56.192	1'56.298	<b>1'54.543</b>	<b>1'54.543</b>	1.513	0.067	159,566	39
7	<b>32 I. VINALES</b>	ESP	Kallio Racing	Yamaha YZF R6			1'55.166	<b>1'54.543</b>	<b>1'54.543</b>	1.513		159,566	21
8	<b>44 L. MAHIAS</b>	FRA	Kawasaki Puccetti Racing	Kawasaki ZX-6R		<b>1'54.661</b>	1'55.215		<b>1'54.661</b>	1.631	0.118	159,402	23
9	<b>4 S. ODENDAAL</b>	RSA	EAB Ten Kate Racing	Yamaha YZF R6		1'55.139	1'55.604	<b>1'54.733</b>	<b>1'54.733</b>	1.703	0.072	159,302	41
10	<b>81 M. GONZALEZ</b>	ESP	Kawasaki ParkinGO Team	Kawasaki ZX-6R		1'55.335	1'55.788	<b>1'54.749</b>	<b>1'54.749</b>	1.719	0.016	159,280	38
11	<b>38 H. SOOMER</b>	EST	Kallio Racing	Yamaha YZF R6		1'55.032	1'55.358	<b>1'54.871</b>	<b>1'54.871</b>	1.841	0.122	159,111	35
12	<b>56 P. SEBESTYEN</b>	HUN	OXXO Yamaha Team Toth	Yamaha YZF R6		1'55.647	1'55.477	<b>1'55.128</b>	<b>1'55.128</b>	2.098	0.257	158,755	34
13	<b>25 A. VERDOIA</b>	FRA	bLU cRU WorldSSP by MS Racing	Yamaha YZF R6		1'56.662	1'56.667	<b>1'55.385</b>	<b>1'55.385</b>	2.355	0.257	158,402	33
14	<b>99 D. WEBB</b>	GBR	WRP Wepol Racing	Yamaha YZF R6		1'56.087	1'56.028	<b>1'55.611</b>	<b>1'55.611</b>	2.581	0.226	158,092	39
15	<b>22 F. FULIGNI</b>	ITA	MV Agusta Reparto Corse	MV Agusta F3 675		1'55.804	1'56.762	<b>1'55.658</b>	<b>1'55.658</b>	2.628	0.047	158,028	40
16	<b>83 L. EPIS</b>	AUS	MPM Routz Racing Team	Yamaha YZF R6		1'56.760	1'56.901	<b>1'55.821</b>	<b>1'55.821</b>	2.791	0.163	157,806	41
17	<b>78 H. OKUBO</b>	JPN	Dynavolt Honda	Honda CBR600RR		1'57.032	1'56.621	<b>1'55.959</b>	<b>1'55.959</b>	2.929	0.138	157,618	34
18	<b>12 A. RUIZ CARRANZA</b>	ESP	EMPERADOR Racing Team	Yamaha YZF R6	*	1'56.411	<b>1'56.031</b>	1'56.143	<b>1'56.031</b>	3.001	0.072	157,520	32
19	<b>47 A. BASSANI</b>	ITA	Soradis Yamaha Motoxacing	Yamaha YZF R6	*	1'56.489	1'56.917	<b>1'56.083</b>	<b>1'56.083</b>	3.053	0.052	157,449	45
20	<b>34 K. MANFREDI</b>	ITA	Altogoo Racing Team	Yamaha YZF R6	*	1'57.439	1'57.224	<b>1'56.101</b>	<b>1'56.101</b>	3.071	0.018	157,425	39
21	<b>52 P. HOBELSBERGER</b>	GER	Dynavolt Honda	Honda CBR600RR		1'57.259	1'57.327	<b>1'56.103</b>	<b>1'56.103</b>	3.073	0.002	157,422	35
22	<b>84 L. CRESSON</b>	BEL	OXXO Yamaha Team Toth	Yamaha YZF R6		1'56.455	1'56.663	<b>1'56.233</b>	<b>1'56.233</b>	3.203	0.130	157,246	41
23	<b>6 M. HERRERA</b>	ESP	Altogoo Racing Team	Yamaha YZF R6		<b>1'56.287</b>	1'56.968	1'56.468	<b>1'56.287</b>	3.257	0.054	157,173	42
24	<b>9 G. HENDRA PRATAMA</b>	INA	bLU cRU WorldSSP by MS Racing	Yamaha YZF R6		<b>1'56.312</b>	1'57.479	1'56.495	<b>1'56.312</b>	3.282	0.025	157,139	29
25	<b>2 L. MONTELLA</b>	ITA	DK MOTORSPORT	Yamaha YZF R6	*	1'57.459	1'56.953	<b>1'56.399</b>	<b>1'56.399</b>	3.369	0.087	157,022	41

\* WorldSSP Challenge

05/09/2020

These data/results cannot be reproduced, stored and/or transmitted in whole or in part by any manner of electronic, mechanical, photocopying, recording, broadcasting or otherwise now known or herein after developed without the previous express consent by the copyright owner, except for reproduction in daily press and regular printed publications on sale to the public within 60 days of the event related to those data/results and always provided that copyright symbol appears together as follows below.

© DORNA WSBK ORGANIZATION Srl 2020

FICR PERUGIA TIMING



Official Tyre Supplier



Official Timekeeper

**Pirelli Teruel Round, 4 - 6 September 2020**  
**Best Sectors & Speed Free Practice 3rd Session**

MotorLand Aragon 5.077 m

BEST LAP		
1	55 A. LOCATELLI	Yamaha YZF R6 1'53.030
2	5 P. OETTL	Kawasaki ZX-6R 1'53.755
3	3 R. DE ROSA	MV Agusta F3 675 1'53.833
4	16 J. CLUZEL	Yamaha YZF R6 1'53.989
5	61 C. ONCU	Kawasaki ZX-6R 1'54.476
6	32 I. VINALES	Yamaha YZF R6 1'54.543
7	94 C. PEROLARI	Yamaha YZF R6 1'54.543
8	4 S. ODENDAAL	Yamaha YZF R6 1'54.733
9	81 M. GONZALEZ	Kawasaki ZX-6R 1'54.749
10	38 H. SOOMER	Yamaha YZF R6 1'54.871
11	56 P. SEBESTYEN	Yamaha YZF R6 1'55.128
12	25 A. VERDOIA	Yamaha YZF R6 1'55.385
13	99 D. WEBB	Yamaha YZF R6 1'55.611
14	22 F. FULIGNI	MV Agusta F3 675 1'55.658
15	83 L. EPIS	Yamaha YZF R6 1'55.821
16	78 H. OKUBO	Honda CBR600RR 1'55.959
17	47 A. BASSANI	Yamaha YZF R6 1'56.083
18	34 K. MANFREDI	Yamaha YZF R6 1'56.101
19	52 P. HOBELBERGER	Honda CBR600RR 1'56.103
20	12 A. RUIZ CARRANZA	Yamaha YZF R6 1'56.143
21	84 L. CRESSON	Yamaha YZF R6 1'56.233
22	2 L. MONTELLA	Yamaha YZF R6 1'56.399
23	6 M. HERRERA	Yamaha YZF R6 1'56.468
24	9 G. HENDRA PRATAMA	Yamaha YZF R6 1'56.495
25	44 L. MAHIAS	Kawasaki ZX-6R

SPEED		
1	32 I. VINALES	Yamaha YZF R6 275,5
2	25 A. VERDOIA	Yamaha YZF R6 273,4
3	61 C. ONCU	Kawasaki ZX-6R 272,7
4	56 P. SEBESTYEN	Yamaha YZF R6 272,0
5	55 A. LOCATELLI	Yamaha YZF R6 271,4
6	9 G. HENDRA PRATAMA	Yamaha YZF R6 271,4
7	12 A. RUIZ CARRANZA	Yamaha YZF R6 271,4
8	6 M. HERRERA	Yamaha YZF R6 271,4
9	4 S. ODENDAAL	Yamaha YZF R6 271,4
10	81 M. GONZALEZ	Kawasaki ZX-6R 270,7
11	94 C. PEROLARI	Yamaha YZF R6 270,0
12	16 J. CLUZEL	Yamaha YZF R6 269,3
13	47 A. BASSANI	Yamaha YZF R6 269,3
14	38 H. SOOMER	Yamaha YZF R6 268,7
15	78 H. OKUBO	Honda CBR600RR 268,7
16	5 P. OETTL	Kawasaki ZX-6R 268,0
17	52 P. HOBELBERGER	Honda CBR600RR 267,3
18	99 D. WEBB	Yamaha YZF R6 267,3
19	3 R. DE ROSA	MV Agusta F3 675 267,3
20	34 K. MANFREDI	Yamaha YZF R6 266,7
21	2 L. MONTELLA	Yamaha YZF R6 266,7
22	84 L. CRESSON	Yamaha YZF R6 264,7
23	22 F. FULIGNI	MV Agusta F3 675 263,4
24	83 L. EPIS	Yamaha YZF R6 260,2

SEG. 1		SEG. 2		SEG. 3		SEG. 4	
1	55 A. LOCATELLI 31.985	1	55 A. LOCATELLI 31.747	1	55 A. LOCATELLI 21.521	1	55 A. LOCATELLI 27.696
2	5 P. OETTL 32.164	2	5 P. OETTL 31.841	2	3 R. DE ROSA 21.652	2	5 P. OETTL 27.829
3	3 R. DE ROSA 32.260	3	16 J. CLUZEL 31.860	3	32 I. VINALES 21.725	3	3 R. DE ROSA 27.863
4	16 J. CLUZEL 32.303	4	32 I. VINALES 31.909	4	16 J. CLUZEL 21.798	4	32 I. VINALES 27.894
5	61 C. ONCU 32.330	5	3 R. DE ROSA 31.975	5	38 H. SOOMER 21.838	5	81 M. GONZALEZ 27.938
6	94 C. PEROLARI 32.457	6	4 S. ODENDAAL 32.044	6	5 P. OETTL 21.846	6	16 J. CLUZEL 27.945
7	38 H. SOOMER 32.487	7	61 C. ONCU 32.067	7	81 M. GONZALEZ 21.889	7	12 A. RUIZ CARRANZA 27.964
8	32 I. VINALES 32.497	8	94 C. PEROLARI 32.078	8	4 S. ODENDAAL 21.942	8	4 S. ODENDAAL 27.965
9	4 S. ODENDAAL 32.502	9	38 H. SOOMER 32.241	9	61 C. ONCU 21.972	9	61 C. ONCU 28.001
10	56 P. SEBESTYEN 32.543	10	81 M. GONZALEZ 32.247	10	94 C. PEROLARI 21.978	10	94 C. PEROLARI 28.030
11	81 M. GONZALEZ 32.613	11	83 L. EPIS 32.260	11	78 H. OKUBO 22.093	11	25 A. VERDOIA 28.053
12	83 L. EPIS 32.735	12	56 P. SEBESTYEN 32.288	12	52 P. HOBELBERGER 22.106	12	56 P. SEBESTYEN 28.069
13	25 A. VERDOIA 32.738	13	25 A. VERDOIA 32.357	13	56 P. SEBESTYEN 22.111	13	6 M. HERRERA 28.115
14	34 K. MANFREDI 32.750	14	22 F. FULIGNI 32.360	14	2 L. MONTELLA 22.129	14	99 D. WEBB 28.164
15	99 D. WEBB 32.768	15	99 D. WEBB 32.409	15	22 F. FULIGNI 22.145	15	38 H. SOOMER 28.201
16	52 P. HOBELBERGER 32.847	16	84 L. CRESSON 32.416	16	25 A. VERDOIA 22.182	16	22 F. FULIGNI 28.203
17	22 F. FULIGNI 32.869	17	47 A. BASSANI 32.507	17	47 A. BASSANI 22.197	17	52 P. HOBELBERGER 28.277
18	84 L. CRESSON 32.897	18	78 H. OKUBO 32.516	18	6 M. HERRERA 22.198	18	9 G. HENDRA PRATAMA 28.303
19	47 A. BASSANI 32.897	19	34 K. MANFREDI 32.520	19	99 D. WEBB 22.232	19	47 A. BASSANI 28.347
20	78 H. OKUBO 32.911	20	2 L. MONTELLA 32.591	20	34 K. MANFREDI 22.238	20	34 K. MANFREDI 28.381
21	9 G. HENDRA PRATAMA 32.948	21	52 P. HOBELBERGER 32.599	21	83 L. EPIS 22.252	21	84 L. CRESSON 28.415
22	12 A. RUIZ CARRANZA 33.070	22	12 A. RUIZ CARRANZA 32.618	22	12 A. RUIZ CARRANZA 22.256	22	78 H. OKUBO 28.439
23	2 L. MONTELLA 33.104	23	9 G. HENDRA PRATAMA 32.739	23	9 G. HENDRA PRATAMA 22.267	23	83 L. EPIS 28.471
24	6 M. HERRERA 33.120	24	6 M. HERRERA 32.757	24	84 L. CRESSON 22.288	24	2 L. MONTELLA 28.575

05/09/2020

These data/results cannot be reproduced, stored and/or transmitted in whole or in part by any manner of electronic, mechanical, photocopying, recording, broadcasting or otherwise now known or herein after developed without the previous express consent by the copyright owner, except for reproduction in daily press and regular printed publications on sale to the public within 60 days of the event related to those data/results and always provided that copyright symbol appears together as follows below.

© DORNA WSBK ORGANIZATION Srl 2020

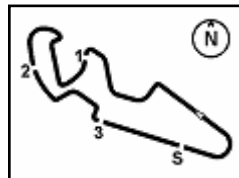
FICR PERUGIA TIMING



Official Tyre Supplier



Official Timekeeper



MotorLand Aragon 5.077 m

## Pirelli Teruel Round, 4 - 6 September 2020

### Ideal Times Free Practice 3rd Session

No.	Rider	Nat	Bike	Seg. 1	Seg. 2	Seg. 3	Seg. 4	Ideal Time				
				Diff. 1	Diff. 2	Diff. 3	Diff. 4	Best Lap	Pos.	Diff.		
1	<b>55 A. LOCATELLI</b>	ITA	Yamaha YZF R6	31.985 +0.077	31.747	21.521	27.696 +0.004	<b>1'52.949</b> 1'53.030	1	0.081		
2	<b>5 P. OETTL</b>	GER	Kawasaki ZX-6R	32.164 +0.075	31.841	21.846	27.829	<b>1'53.680</b> 1'53.755	2	0.075		
3	<b>3 R. DE ROSA</b>	ITA	MV Agusta F3 675	32.260 +0.083	31.975	21.652	27.863	<b>1'53.750</b> 1'53.833	3	0.083		
4	<b>16 J. CLUZEL</b>	FRA	Yamaha YZF R6	32.303	31.860	21.798	27.945 +0.083	<b>1'53.906</b> 1'53.989	4	0.083		
5	<b>32 I. VINALES</b>	ESP	Yamaha YZF R6	32.497 +0.255	31.909 +0.203	21.725	27.894 +0.060	<b>1'54.025</b> 1'54.543	7	0.518		
6	<b>61 C. ONCU</b>	TUR	Kawasaki ZX-6R	32.330	32.067	21.972 +0.013	28.001 +0.093	<b>1'54.370</b> 1'54.476	5	0.106		
7	<b>4 S. ODENDAAL</b>	RSA	Yamaha YZF R6	32.502	32.044 +0.207	21.942	27.965 +0.073	<b>1'54.453</b> 1'54.733	8	0.280		
8	<b>94 C. PEROLARI</b>	FRA	Yamaha YZF R6	32.457	32.078	21.978	28.030	<b>1'54.543</b> 1'54.543	6			
9	<b>81 M. GONZALEZ</b>	ESP	Kawasaki ZX-6R	32.613 +0.062	32.247	21.889	27.938	<b>1'54.687</b> 1'54.749	9	0.062		
10	<b>38 H. SOOMER</b>	EST	Yamaha YZF R6	32.487	32.241 +0.060	21.838	28.201 +0.044	<b>1'54.767</b> 1'54.871	10	0.104		
11	<b>56 P. SEBESTYEN</b>	HUN	Yamaha YZF R6	32.543 +0.024	32.288	22.111 +0.045	28.069 +0.048	<b>1'55.011</b> 1'55.128	11	0.117		
12	<b>25 A. VERDOIA</b>	FRA	Yamaha YZF R6	32.738	32.357	22.182 +0.055	28.053	<b>1'55.330</b> 1'55.385	12	0.055		
13	<b>99 D. WEBB</b>	GBR	Yamaha YZF R6	32.768 +0.038	32.409	22.232	28.164	<b>1'55.573</b> 1'55.611	13	0.038		
14	<b>22 F. FULIGNI</b>	ITA	MV Agusta F3 675	32.869	32.360	22.145 +0.081	28.203	<b>1'55.577</b> 1'55.658	14	0.081		
15	<b>83 L. EPIS</b>	AUS	Yamaha YZF R6	32.735 +0.103	32.260	22.252	28.471	<b>1'55.718</b> 1'55.821	15	0.103		
16	<b>52 P. HOBELSBERGER</b>	GER	Honda CBR600RR	32.847 +0.143	32.599 +0.018	22.106	28.277 +0.113	<b>1'55.829</b> 1'56.103	19	0.274		
17	<b>34 K. MANFREDI</b>	ITA	Yamaha YZF R6	32.750 +0.089	32.520 +0.048	22.238 +0.075	28.381	<b>1'55.889</b> 1'56.101	18	0.212		
18	<b>12 A. RUIZ CARRANZA</b>	ESP	Yamaha YZF R6	33.070 +0.019	32.618 +0.101	22.256 +0.057	27.964 +0.058	<b>1'55.908</b> 1'56.143	20	0.235		
19	<b>47 A. BASSANI</b>	ITA	Yamaha YZF R6	32.897	32.507 +0.055	22.197 +0.015	28.347 +0.065	<b>1'55.948</b> 1'56.083	17	0.135		
20	<b>78 H. OKUBO</b>	JPN	Honda CBR600RR	32.911	32.516	22.093	28.439	<b>1'55.959</b> 1'55.959	16			
21	<b>84 L. CRESSON</b>	BEL	Yamaha YZF R6	32.897	32.416	22.288 +0.162	28.415 +0.055	<b>1'56.016</b> 1'56.233	21	0.217		
22	<b>6 M. HERRERA</b>	ESP	Yamaha YZF R6	33.120 +0.028	32.757	22.198 +0.024	28.115 +0.226	<b>1'56.190</b> 1'56.468	23	0.278		
23	<b>9 G. HENDRA PRATAMA</b>	INA	Yamaha YZF R6	32.948	32.739	22.267 +0.023	28.303 +0.215	<b>1'56.257</b> 1'56.495	24	0.238		
24	<b>2 L. MONTELLA</b>	ITA	Yamaha YZF R6	33.104	32.591	22.129	28.575	<b>1'56.399</b> 1'56.399	22			
	<b>44 L. MAHIAS</b>	FRA	Kawasaki ZX-6R	One or more sectors missing								
<b>Overall Ideal Time</b>				31.985	31.747	21.521	27.696	<b>1'52.949</b>				

05/09/2020

These data/results cannot be reproduced, stored and/or transmitted in whole or in part by any manner of electronic, mechanical, photocopying, recording, broadcasting or otherwise now known or herein after developed without the previous express consent by the copyright owner, except for reproduction in daily press and regular printed publications on sale to the public within 60 days of the event related to those data/results and always provided that copyright symbol appears together as follows below.

© DORNA WSBK ORGANIZATION Srl 2020

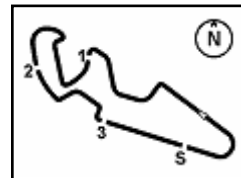
FICR PERUGIA TIMING



Official Tyre Supplier



Official Timekeeper



## Pirelli Teruel Round, 4 - 6 September 2020

### Chronological Analysis Free Practice 3rd Session

MotorLand Aragon 5.077 m

1 / 3

1° 55 A. LOCATELLI (1'53.030)								6° 94 C. PEROLARI (1'54.543)							
Lap	Seg.1	Seg.2	Seg.3	Seg.4	Lap Time	km/h	Local Time	Lap	Seg.1	Seg.2	Seg.3	Seg.4	Lap Time	km/h	Local Time
1		34.906	25.807	28.425		<b>271,4</b>	9:32'02.001	1		33.422	22.674	28.681		266,0	9:32'08.187
2	33.065	32.772	22.305	28.833	1'56.975	270,0	9:33'58.976	2	32.982	32.899	22.258	28.225	1'56.364	268,0	9:34'04.551
3	33.981	43.769	23.304	28.217	2'09.271	268,0	9:36'08.247	3	32.983	35.493	26.814	28.834	2'04.124	260,9	9:36'08.675
4	32.616	32.068	21.917	27.926	1'54.527	270,7	9:38'02.774	4	<b>32.457</b>	<b>32.078</b>	<b>21.978</b>	<b>28.030</b>	<b>1'54.543</b>	<b>270,0</b>	9:38'03.218
5	32.541	32.159	22.205	28.193	1'55.098	270,0	9:39'57.872	5	32.509	32.144	22.211	28.091	1'54.955	269,3	9:39'58.173
6	35.091	41.918	22.695	34.664	2'14.368P	270,7	9:42'12.240	6	32.703	32.479	24.175	28.875	1'58.232	266,0	9:41'56.405
7	1'47.050	32.402	21.997	27.929	3'09.378P	266,0	9:45'21.618	7	32.662	32.501	22.235	28.398	1'55.796	263,4	9:43'52.201
8	32.185	31.972	21.610	27.826	1'53.593	267,3	9:47'15.211	8	33.126	33.631	22.494	33.587	2'02.838P	263,4	9:45'55.039
9	32.062	<b>31.747</b>	<b>21.521</b>	27.700	<b>1'53.030</b>	269,3	9:49'08.241	9	3'06.658	32.481	22.166	28.391	4'29.696P	262,8	9:50'24.735
10	<b>31.985</b>	31.751	21.628	<b>27.696</b>	1'53.060	270,7	9:51'01.301								

2° 5 P. OETTL (1'53.755)								7° 32 I. VINALES (1'54.543)							
Lap	Seg.1	Seg.2	Seg.3	Seg.4	Lap Time	km/h	Local Time	Lap	Seg.1	Seg.2	Seg.3	Seg.4	Lap Time	km/h	Local Time
1		33.078	23.444	34.287		<b>268,0</b>	9:32'08.466	1		34.285	24.294	30.223		236,3	9:32'20.084
2	1'26.384	32.547	22.211	28.153	2'49.295P	262,1	9:34'57.761	2	32.752	32.112	<b>21.725</b>	27.954	<b>1'54.543</b>	270,0	9:34'14.627
3	32.607	32.178	22.176	28.003	1'54.964	264,7	9:36'52.725	3	33.841	33.903	23.027	28.406	1'59.177	266,7	9:36'13.804
4	32.427	32.073	22.118	27.960	1'54.578	265,4	9:38'47.303	4	32.585	32.036	22.558	<b>27.894</b>	1'55.073	<b>275,5</b>	9:38'08.877
5	32.459	32.188	22.024	27.991	1'54.662	265,4	9:40'41.965	5	32.962	32.441	22.169	28.219	1'55.791C	274,1	9:40'04.668
6	33.836	33.221	22.888	34.355	2'04.300P	259,0	9:42'46.265	6	<b>32.497</b>	<b>31.909</b>	30.425	34.199	2'09.030P	267,3	9:42'13.698
7	2'58.439	32.173	22.074	28.017	4'20.703CP	262,1	9:47'06.968	7	3'24.001	32.579	22.243	28.355	4'47.178P	264,7	9:47'00.876
8	<b>32.164</b>	31.845	23.724	28.107	1'55.840	264,1	9:49'02.808	8	32.848	32.297	22.032	28.320	1'55.497	264,1	9:48'56.373
9	32.239	<b>31.841</b>	<b>21.846</b>	<b>27.829</b>	<b>1'53.755</b>	265,4	9:50'56.563	9	32.661	32.185	21.989	28.394	1'55.229	264,7	9:50'51.602

3° 3 R. DE ROSA (1'53.833)								8° 4 S. ODENDAAL (1'54.733)							
Lap	Seg.1	Seg.2	Seg.3	Seg.4	Lap Time	km/h	Local Time	Lap	Seg.1	Seg.2	Seg.3	Seg.4	Lap Time	km/h	Local Time
1		40.577	24.901	32.402		228,3	9:33'59.207	1		34.224	23.412	28.827		260,9	9:32'16.668
2	33.843	33.662	22.758	29.144	1'59.407	260,9	9:35'58.614	2	33.383	32.768	22.506	29.125	1'57.782	263,4	9:34'14.450
3	32.801	32.196	21.876	28.258	1'55.131	264,1	9:37'53.745	3	32.972	32.494	22.259	28.155	1'55.880	269,3	9:36'10.330
4	32.424	32.203	21.907	28.047	1'54.581	264,1	9:39'48.326	4	32.996	32.748	22.387	28.589	1'56.720	262,8	9:38'07.050
5	32.510	32.158	21.872	28.044	1'54.584	266,0	9:41'42.910	5	36.600	32.385	22.388	28.292	1'59.665	266,0	9:40'06.715
6	<b>32.260</b>	32.096	21.760	28.032	1'54.148	265,4	9:43'37.058	6	32.789	<b>32.044</b>	22.076	<b>27.965</b>	1'54.874	<b>271,4</b>	9:42'01.589
7	32.377	32.003	21.672	27.965	1'54.017	264,7	9:45'31.075	7	<b>32.502</b>	32.251	<b>21.942</b>	28.038	<b>1'54.733</b>	269,3	9:43'56.322
8	32.353	32.130	21.737	27.898	1'54.118	266,7	9:47'25.193	8	33.232	32.512	22.198	28.211	1'56.153	265,4	9:45'52.475
9	33.589	34.898	23.321	28.384	2'00.192	264,1	9:49'25.385	9	32.558	32.087	22.335	28.160	1'55.140	266,0	9:47'47.615
10	32.343	<b>31.975</b>	<b>21.652</b>	<b>27.863</b>	<b>1'53.833</b>	<b>267,3</b>	9:51'19.218	10	32.632	32.745	22.865	28.325	1'55.567	263,4	9:49'44.182
								11	32.800	32.348	22.178	28.288	1'55.614	265,4	9:51'39.796

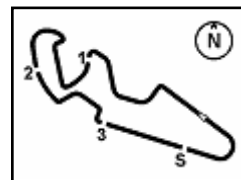
4° 16 J. CLUZEL (1'53.989)								9° 81 M. GONZALEZ (1'54.749)							
Lap	Seg.1	Seg.2	Seg.3	Seg.4	Lap Time	km/h	Local Time	Lap	Seg.1	Seg.2	Seg.3	Seg.4	Lap Time	km/h	Local Time
1		34.952	23.141	28.704		C 264,1	9:32'56.460	1		33.872	22.350	29.428		264,1	9:31'58.592
2	32.942	32.593	22.196	28.323	1'56.054	266,7	9:34'52.514	2	32.952	32.495	22.369	34.359	2'02.175	225,9	9:34'00.767
3	32.833	32.365	22.119	28.153	1'55.470	266,7	9:36'47.984	3	33.265	33.552	30.580	36.306	2'13.703	169,8	9:36'14.470
4	32.613	32.256	22.090	28.103	1'55.062	267,3	9:38'43.046	4	32.675	<b>32.247</b>	<b>21.889</b>	<b>27.938</b>	<b>1'54.749</b>	<b>270,7</b>	9:38'09.219
5	33.479	34.631	22.330	34.747	2'05.187P	252,3	9:40'48.233	5	33.012	32.468	25.040	28.340	1'58.860	266,7	9:40'08.079
6	2'46.316	33.083	22.384	28.617	4'10.400P	267,3	9:44'58.633	6	32.659	32.319	21.931	28.118	1'55.027	268,7	9:42'03.106
7	32.508	31.939	<b>21.798</b>	28.183	1'54.428	265,4	9:46'53.061	7	32.729	32.332	22.023	28.178	1'55.262	266,0	9:43'58.368
8	<b>32.303</b>	<b>31.860</b>	<b>21.798</b>	28.028	<b>1'53.989</b>	268,0	9:48'47.050	8	<b>32.613</b>	32.333	21.935	27.991	1'54.872	269,3	9:45'53.240
9	38.629	37.081	22.050	<b>27.945</b>	2'05.705	<b>269,3</b>	9:50'52.755	9	36.912	34.831	22.487	28.808	2'03.038	268,0	9:47'56.278
								10	32.763	32.432	22.192	28.149	1'55.536	267,3	9:49'51.814
								11	32.859	32.541	22.174	28.236	1'55.810	265,4	9:51'47.624

5° 61 C. ONCU (1'54.476)								10° 38 H. SOOMER (1'54.871)							
Lap	Seg.1	Seg.2	Seg.3	Seg.4	Lap Time	km/h	Local Time	Lap	Seg.1	Seg.2	Seg.3	Seg.4	Lap Time	km/h	Local Time
1		33.086	22.423	28.317		264,7	9:32'09.069	1		33.377	22.658	28.744		265,4	9:32'07.738
2	32.817	32.487	22.439	28.017	1'55.760	<b>272,7</b>	9:34'04.829	2	33.211	32.789	22.849	34.053	2'02.902P	<b>268,7</b>	9:34'10.640
3	33.028	32.609	22.815	28.290	1'56.742	262,1	9:36'01.571	3	1'16.692	32.365	22.191	28.384	2'39.632P	264,1	9:36'50.272
4	32.673	32.454	22.001	34.178	2'01.306P	262,8	9:38'02.877	4	32.624	32.318	22.062	28.254	1'55.258	264,7	9:38'45.530
5	4'33.950	32.412	22.218	28.178	5'56.758P	260,2	9:43'59.635	5	32.533	32.304	22.128	28.308	1'55.273	264,1	9:40'40.803
6	<b>32.330</b>	<b>32.067</b>	21.985	28.094	<b>1'54.476</b>	263,4	9:45'54.111	6	36.836	32.875	22.626	34.037	2'06.374P	266,7	9:42'47.177
7	32.747	32.217	<b>21.972</b>	<b>28.001</b>	1'54.937	266,7	9:47'49.048	7	3'31.993	32.815	22.102	28.355	4'55.265P	264,1	9:47'42.442
8	1'12.294	32.326	25.141	28.254	2'38.015	260,9	9:50'27.063	8	32.571	<b>32.241</b>	22.158	<b>28.201</b>	1'55.171	265,4	9:49'37.613

05/09/2020 P = Pits In/Out - C = Lap Time Cancelled

These data/results cannot be reproduced, stored and/or transmitted in whole or in part by any manner of electronic, mechanical, photocopying, recording, broadcasting or otherwise now known or herein after developed without the previous express consent by the copyright owner, except for reproduction in daily press and regular printed publications on sale to the public within 60 days of the event related to those data/results and always provided that copyright symbol appears together as follows below.

© DORNA WSBK ORGANIZATION Srl 2020



## Pirelli Teruel Round, 4 - 6 September 2020

### Chronological Analysis Free Practice 3rd Session

MotorLand Aragon 5.077 m

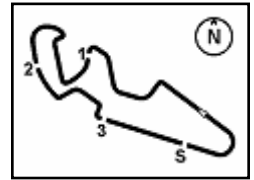
2 / 3

11° 56 P. SEBESTYEN (1'55.128)								16° 78 H. OKUBO (1'55.959)							
Lap	Seg.1	Seg.2	Seg.3	Seg.4	Lap Time	km/h	Local Time	Lap	Seg.1	Seg.2	Seg.3	Seg.4	Lap Time	km/h	Local Time
1		39.167	23.194	30.596		232,3	9:33'59.736	1		33.866	24.150	29.060		260,2	9:32'01.441
2	39.030	32.944	22.999	37.674	2'12.647	125,4	9:36'12.383	2	33.300	33.033	22.703	28.991	1'58.027	266,7	9:33'59.468
3	32.976	32.742	22.684	28.171	1'56.573	267,3	9:38'08.956	3	33.779	34.182	23.160	28.832	1'59.953	268,0	9:35'59.421
4	33.339	32.536	22.422	28.489	1'56.786	<b>272,0</b>	9:40'05.742	4	<b>32.911</b>	<b>32.516</b>	<b>22.093</b>	<b>28.439</b>	<b>1'55.959</b>	<b>268,7</b>	9:37'55.380
5	32.620	32.467	<b>22.111</b>	<b>28.069</b>	1'55.267	264,7	9:42'01.009	5	45.593	33.258	22.670	28.826	2'10.347	268,0	9:40'05.727
6	32.567	<b>32.288</b>	22.156	28.117	<b>1'55.128</b>	264,1	9:43'56.137	6	34.080	32.647	28.292	28.940	2'03.959	264,1	9:42'09.686
7	33.963	32.555	22.317	37.350	2'06.185CP	209,7	9:46'02.322	7	33.571	33.159	23.896	36.090	2'06.716P	260,2	9:44'16.402
8	1'56.594	32.606	22.295	28.167	3'19.662P	262,8	9:49'21.984	8	2'32.728	33.632	22.960	29.076	3'58.396P	260,9	9:48'14.798
9	<b>32.543</b>	32.449	22.303	28.073	1'55.368	270,0	9:51'17.352	9	33.851	33.226	22.961	28.956	1'58.994	260,2	9:50'13.792
12° 25 A. VERDOIA (1'55.385)								17° 47 A. BASSANI (1'56.083)							
Lap	Seg.1	Seg.2	Seg.3	Seg.4	Lap Time	km/h	Local Time	Lap	Seg.1	Seg.2	Seg.3	Seg.4	Lap Time	km/h	Local Time
1		33.953	23.585	28.756		264,7	9:32'01.938	1		34.515	23.803	28.868		<b>269,3</b>	9:32'03.401
2	33.367	32.824	22.662	28.616	1'57.469	<b>273,4</b>	9:33'59.407	2	33.109	32.640	22.627	28.555	1'56.931	268,0	9:34'00.332
3	34.051	33.397	22.860	33.980	2'04.288P	260,9	9:36'03.695	3	33.258	33.617	22.740	28.798	1'58.413	268,7	9:35'58.745
4	6'22.241	36.198	22.365	28.221	7'49.025P	266,7	9:43'52.720	4	32.957	<b>32.507</b>	22.305	28.434	1'56.203	264,1	9:37'54.948
5	32.804	32.637	<b>22.182</b>	28.199	1'55.822	264,7	9:45'48.542	5	33.158	32.532	22.350	28.443	1'56.483	261,5	9:39'51.431
6	40.635	32.808	22.389	29.138	2'04.970	261,5	9:47'53.512	6	33.108	32.518	22.420	28.539	1'56.585	261,5	9:41'48.016
7	33.236	33.276	22.886	29.420	1'58.818	244,9	9:49'52.330	7	33.112	32.624	22.227	28.501	1'56.464	261,5	9:43'44.480
8	<b>32.738</b>	<b>32.357</b>	22.237	<b>28.053</b>	<b>1'55.385</b>	265,4	9:51'47.715	8	33.077	32.582	22.285	28.484	1'56.428	261,5	9:45'40.908
13° 99 D. WEBB (1'55.611)								18° 34 K. MANFREDI (1'56.101)							
Lap	Seg.1	Seg.2	Seg.3	Seg.4	Lap Time	km/h	Local Time	Lap	Seg.1	Seg.2	Seg.3	Seg.4	Lap Time	km/h	Local Time
1		37.548	28.097	37.737		250,6	9:32'29.909	1		33.782	25.002	29.444		256,5	9:32'02.282
2	2'09.984	37.367	23.411	28.854	3'39.616CP	264,7	9:36'09.525	2	33.140	32.785	22.688	28.636	1'57.249	265,4	9:33'59.531
3	32.947	32.645	22.271	28.314	1'56.177	264,1	9:38'05.702	3	33.514	34.433	22.672	28.832	1'59.451	264,1	9:35'58.982
4	34.323	32.801	22.429	28.406	1'57.959	264,7	9:40'03.661	4	32.839	32.568	22.313	<b>28.381</b>	<b>1'56.101</b>	<b>266,7</b>	9:37'55.083
5	32.822	32.586	22.252	28.174	1'55.834	<b>267,3</b>	9:41'59.495	5	32.807	32.655	27.910	29.859	2'03.231	234,3	9:39'58.314
6	32.825	36.402	24.894	28.483	2'02.604	265,4	9:44'02.099	6	32.837	<b>32.520</b>	22.387	28.774	1'56.518	256,5	9:41'54.832
7	32.929	32.498	22.406	28.326	1'56.159	266,0	9:45'58.258	7	34.858	34.544	29.655	28.485	2'07.542	265,4	9:44'02.374
8	<b>32.768</b>	32.468	22.239	28.168	1'55.643	265,4	9:47'53.901	8	32.964	32.640	22.317	28.478	1'56.399	264,7	9:45'58.773
9	35.799	33.043	22.691	28.738	2'00.271	262,1	9:49'54.172	9	32.835	32.642	<b>22.238</b>	28.574	1'56.289	262,8	9:47'55.062
10	32.806	<b>32.409</b>	<b>22.232</b>	<b>28.164</b>	<b>1'55.611</b>	266,7	9:51'49.783	10	33.046	33.835	22.419	28.635	1'57.935	260,9	9:49'52.997
14° 22 F. FULIGNI (1'55.658)								19° 52 P. HOBELSBERGER (1'56.103)							
Lap	Seg.1	Seg.2	Seg.3	Seg.4	Lap Time	km/h	Local Time	Lap	Seg.1	Seg.2	Seg.3	Seg.4	Lap Time	km/h	Local Time
1		35.160	23.140	29.021		258,4	9:34'32.531	1		34.250	23.851	28.731		266,7	9:32'02.735
2	33.404	33.150	22.562	28.526	1'57.642	260,9	9:36'30.173	2	33.176	32.940	22.629	28.756	1'57.501	266,7	9:34'00.236
3	33.183	32.846	22.491	28.446	1'56.966	260,9	9:38'27.139	3	33.719	34.167	22.923	28.756	1'59.565	<b>267,3</b>	9:35'59.801
4	32.921	32.666	22.251	28.318	1'56.156	262,8	9:40'23.295	4	33.017	32.774	22.265	<b>28.277</b>	1'56.333	264,1	9:37'56.134
5	32.973	32.530	22.213	28.386	1'56.102	262,1	9:42'19.397	5	<b>32.847</b>	<b>32.599</b>	22.378	28.419	1'56.243	262,8	9:39'52.377
6	32.993	32.579	22.217	28.277	1'56.066	259,6	9:44'15.463	6	32.990	32.617	<b>22.106</b>	28.390	<b>1'56.103</b>	264,1	9:41'48.480
7	32.946	32.485	<b>22.145</b>	28.292	1'55.868	260,9	9:46'11.331	7	33.125	32.936	23.771	34.779	2'04.611P	260,2	9:43'53.091
8	<b>32.869</b>	<b>32.360</b>	22.226	<b>28.203</b>	<b>1'55.658</b>	<b>263,4</b>	9:48'06.989	8	3'20.936	33.856	22.814	28.925	4'46.531P	258,4	9:48'39.622
9	33.331	32.779	22.212	28.287	1'56.609	262,8	9:50'03.598	9	33.938	33.498	23.140	28.806	1'59.382	259,0	9:50'39.004
15° 83 L. EPIS (1'55.821)								20° 12 A. RUIZ CARRANZA (1'56.143)							
Lap	Seg.1	Seg.2	Seg.3	Seg.4	Lap Time	km/h	Local Time	Lap	Seg.1	Seg.2	Seg.3	Seg.4	Lap Time	km/h	Local Time
1		33.395	22.687	29.816		256,5	9:31'57.252	1		34.086	23.852	28.946		266,0	9:32'17.420
2	33.290	32.838	22.753	28.960	1'57.841	257,8	9:33'55.093	2	33.148	32.636	22.433	<b>27.964</b>	1'56.181	270,0	9:34'13.601
3	33.261	32.699	22.478	28.926	1'57.364	257,8	9:35'52.457	3	33.119	32.810	22.436	28.108	1'56.473	<b>271,4</b>	9:36'10.074
4	33.317	32.902	22.331	28.648	1'57.198	256,5	9:37'49.655	4	33.089	32.719	22.313	28.022	<b>1'56.143</b>	269,3	9:38'06.217
5	34.754	38.645	24.074	38.218	2'15.691P	255,9	9:40'05.346	5	33.103	32.670	22.300	28.223	1'56.296	267,3	9:40'02.513
6	3'23.987	35.709	24.082	29.489	4'53.267P	251,2	9:44'58.613	6	<b>33.070</b>	32.794	22.468	28.163	1'56.495	268,7	9:41'59.008
7	33.024	32.421	22.265	28.515	1'56.225	259,6	9:46'54.838	7	38.673	32.888	22.457	28.273	2'02.291	268,7	9:44'01.299
8	<b>32.735</b>	33.307	30.467	31.972	2'08.481	232,3	9:49'03.319	8	33.198	<b>32.618</b>	<b>22.256</b>	31.765	1'59.837	268,0	9:46'01.136
9	32.838	<b>32.260</b>	<b>22.252</b>	<b>28.471</b>	<b>1'55.821</b>	<b>260,2</b>	9:50'59.140								

05/09/2020 P = Pits In/Out - C = Lap Time Cancelled

These data/results cannot be reproduced, stored and/or transmitted in whole or in part by any manner of electronic, mechanical, photocopying, recording, broadcasting or otherwise now known or herein after developed without the previous express consent by the copyright owner, except for reproduction in daily press and regular printed publications on sale to the public within 60 days of the event related to those data/results and always provided that copyright symbol appears together as follows below.

© DORNA WSBK ORGANIZATION Srl 2020



## Pirelli Teruel Round, 4 - 6 September 2020

### Chronological Analysis Free Practice 3rd Session

9 36.715 33.752 23.320 37.484 2'11.271P 264,1 9:48'12.407

21° 84 L. CRESSON (1'56.233)							
Lap	Seg.1	Seg.2	Seg.3	Seg.4	Lap Time	km/h	Local Time
1		33.543	22.852	28.914		260,2	9:32'09.503
2	33.906	32.817	22.683	28.462	1'57.868	260,9	9:34'07.371
3	33.107	33.118	22.642	28.539	1'57.406	260,9	9:36'04.777
4	32.993	32.745	22.383	28.564	1'56.685	262,8	9:38'01.462
5	33.014	32.761	22.679	28.655	1'57.109	262,8	9:39'58.571
6	<b>32.897</b>	<b>32.416</b>	22.450	28.470	<b>1'56.233</b>	261,5	9:41'54.804
7	35.759	32.808	22.442	28.531	1'59.540	260,2	9:43'54.344
8	33.157	32.499	<b>22.343</b>	<b>28.415</b>	1'56.414	262,1	9:45'50.758
9	32.993	32.570	<b>22.288</b>	28.470	1'56.321	260,2	9:47'47.079
10	38.648	37.644	22.507	28.498	2'07.297	<b>264,7</b>	9:49'54.376
11	40.442	33.278	29.240	35.073	2'18.033P	248,3	9:52'12.409

22° 2 L. MONTELLA (1'56.399)							
Lap	Seg.1	Seg.2	Seg.3	Seg.4	Lap Time	km/h	Local Time
1		34.396	23.266	29.333		262,8	9:32'05.223
2	33.600	33.579	22.943	29.003	1'59.125	262,1	9:34'04.348
3	33.958	33.214	22.792	28.838	1'58.802	262,8	9:36'03.150
4	33.221	33.060	22.548	29.258	1'58.087C	259,6	9:38'01.237
5	45.642	33.818	23.678	37.322	2'20.460P	254,1	9:40'21.697
6	4'05.826	33.529	22.864	28.941	5'31.160P	266,0	9:45'52.857
7	<b>33.104</b>	<b>32.591</b>	<b>22.129</b>	<b>28.575</b>	<b>1'56.399</b>	258,4	9:47'49.256
8	33.548	34.480	28.915	28.600	2'05.543C	<b>266,7</b>	9:49'54.799
9	33.951	33.354	22.456	28.721	1'58.482	262,1	9:51'53.281

23° 6 M. HERRERA (1'56.468)							
Lap	Seg.1	Seg.2	Seg.3	Seg.4	Lap Time	km/h	Local Time
1		34.538	23.858	28.863		268,7	9:32'17.690
2	33.366	32.891	22.293	28.324	1'56.874	269,3	9:34'14.564
3	33.461	32.930	22.361	28.389	1'57.141	269,3	9:36'11.705
4	33.353	33.026	22.311	28.179	1'56.869	268,7	9:38'08.574
5	33.133	32.964	22.388	<b>28.115</b>	1'56.600	<b>271,4</b>	9:40'05.174
6	<b>33.120</b>	32.903	<b>22.198</b>	37.811	2'06.032P	257,8	9:42'11.206
7	2'08.674	33.413	22.382	28.674	3'33.143P	264,1	9:45'44.349
8	33.148	<b>32.757</b>	22.222	28.341	<b>1'56.468</b>	265,4	9:47'40.817
9	33.272	32.850	22.616	28.347	1'57.085	264,1	9:49'37.902
10	33.165	32.788	22.267	28.321	1'56.541	266,7	9:51'34.443

24° 9 G. HENDRA PRATAMA (1'56.495)							
Lap	Seg.1	Seg.2	Seg.3	Seg.4	Lap Time	km/h	Local Time
1		33.644	22.902	33.592		176,2	9:32'10.497
2	33.348	32.779	22.784	28.394	1'57.305	<b>271,4</b>	9:34'07.802
3	33.347	33.463	26.471	28.670	2'01.951	<b>271,4</b>	9:36'09.753
4	33.219	32.834	22.896	<b>28.303</b>	1'57.252	268,7	9:38'07.005
5	33.559	33.031	22.554	39.918	2'09.062P	268,7	9:40'16.067
6	3'46.664	33.520	22.744	28.690	5'11.618P	264,1	9:45'27.685
7	33.040	32.816	<b>22.267</b>	28.392	1'56.515	265,4	9:47'24.200
8	33.404	32.887	22.317	28.319	1'56.927	265,4	9:49'21.127
9	<b>32.948</b>	<b>32.739</b>	22.290	28.518	<b>1'56.495</b>	264,7	9:51'17.622

05/09/2020

P = Pits In/Out - C = Lap Time Cancelled

These data/results cannot be reproduced, stored and/or transmitted in whole or in part by any manner of electronic, mechanical, photocopying, recording, broadcasting or otherwise now known or herein after developed without the previous express consent by the copyright owner, except for reproduction in daily press and regular printed publications on sale to the public within 60 days of the event related to those data/results and always provided that copyright symbol appears together as follows below.

© DORNA WSBK ORGANIZATION Srl 2020

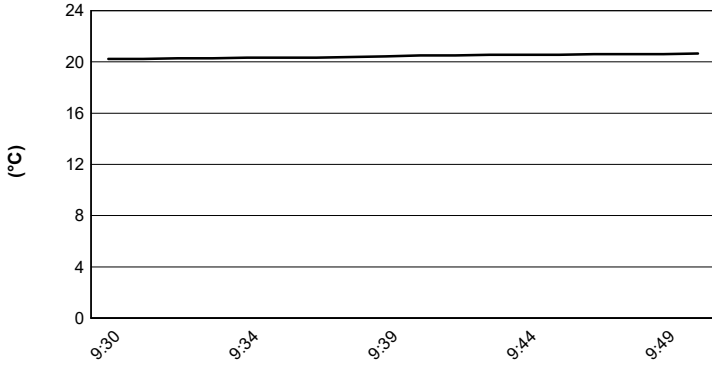


## Pirelli Teruel Round, 4 - 6 September 2020

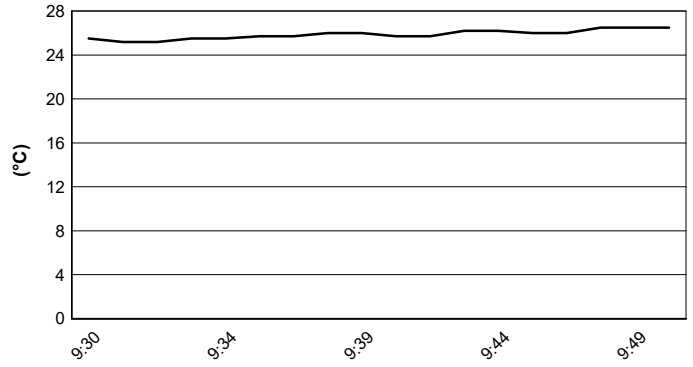
### Weather Report Free Practice 3rd Session

Session started 09:30 - Session ended 9:52

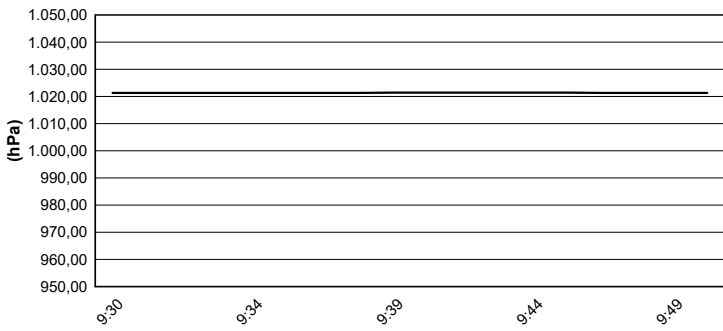
#### Air Temperature



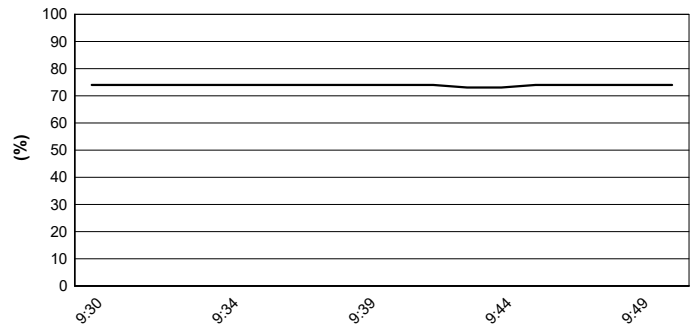
#### Track Temperature



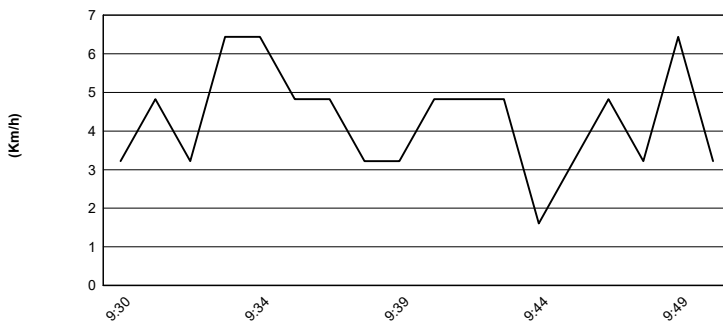
#### Air Pressure



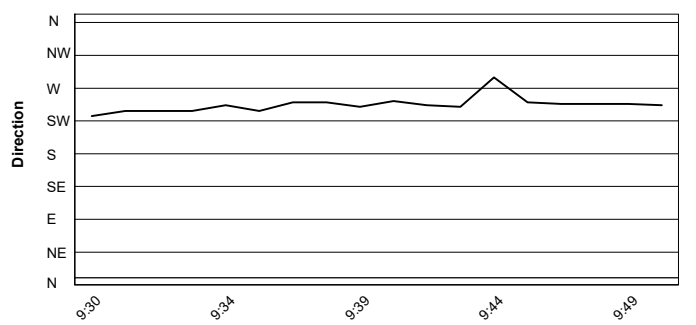
#### Humidity



#### Wind Speed



#### Wind Direction



05/09/2020

These data/results cannot be reproduced, stored and/or transmitted in whole or in part by any manner of electronic, mechanical, photocopying, recording, broadcasting or otherwise now known or herein after developed without the previous express consent by the copyright owner, except for reproduction in daily press and regular printed publications on sale to the public within 60 days of the event related to those data/results and always provided that copyright symbol appears together as follows below.

© DORNA WSBK ORGANIZATION Srl 2020