

Pirelli Teruel Round, 4 - 6 September 2020

Results Tissot Superpole

MotorLand Aragon 5.077 m

1 / 2

No.	Rider	Nat	Team	Bike	Class	Time	Gap	Rel.	Laps	Speed	
										Avg	Max
1	55 A. LOCATELLI	ITA	BARDAHL Evan Bros. WorldSSP Team	Yamaha YZF R6		1'53.003			9	161,741	268,7
2	32 I. VINALES	ESP	Kallio Racing	Yamaha YZF R6		1'53.213	0.210	0.210	10	161,441	273,4
3	3 R. DE ROSA	ITA	MV Agusta Reparto Corse	MV Agusta F3 675		1'53.497	0.494	0.284	10	161,037	267,3
4	16 J. CLUZEL	FRA	GMT94 Yamaha	Yamaha YZF R6		1'53.687	0.684	0.190	7	160,768	270,7
5	44 L. MAHIAS	FRA	Kawasaki Puccetti Racing	Kawasaki ZX-6R		1'54.034	1.031	0.347	7	160,279	267,3
6	5 P. OETTL	GER	Kawasaki Puccetti Racing	Kawasaki ZX-6R		1'54.186	1.183	0.152	6	160,065	264,1
7	38 H. SOOMER	EST	Kallio Racing	Yamaha YZF R6		1'54.271	1.268	0.085	8	159,946	269,3
8	81 M. GONZALEZ	ESP	Kawasaki ParkinGO Team	Kawasaki ZX-6R		1'54.306	1.303	0.035	10	159,897	270,7
9	4 S. ODENDAAL	RSA	EAB Ten Kate Racing	Yamaha YZF R6		1'54.338	1.335	0.032	9	159,852	267,3
10	56 P. SEBESTYEN	HUN	OXXO Yamaha Team Toth	Yamaha YZF R6		1'54.395	1.392	0.057	8	159,773	265,4
11	61 C. ONCU	TUR	Turkish Racing Team	Kawasaki ZX-6R		1'54.520	1.517	0.125	9	159,598	264,7
12	94 C. PEROLARI	FRA	GMT94 Yamaha	Yamaha YZF R6		1'54.568	1.565	0.048	9	159,531	270,0
13	99 D. WEBB	GBR	WRP Wepol Racing	Yamaha YZF R6		1'54.690	1.687	0.122	9	159,362	268,0
14	22 F. FULIGNI	ITA	MV Agusta Reparto Corse	MV Agusta F3 675		1'54.881	1.878	0.191	10	159,097	270,0
15	83 L. EPIS	AUS	MPM Routz Racing Team	Yamaha YZF R6		1'55.200	2.197	0.319	9	158,656	265,4
16	12 A. RUIZ CARRANZA	ESP	EMPERADOR Racing Team	Yamaha YZF R6	*	1'55.237	2.234	0.037	9	158,605	269,3
17	9 G. HENDRA PRATAMA	INA	bLU cRU WorldSSP by MS Racing	Yamaha YZF R6		1'55.247	2.244	0.010	9	158,592	271,4
18	25 A. VERDOIA	FRA	bLU cRU WorldSSP by MS Racing	Yamaha YZF R6		1'55.257	2.254	0.010	9	158,578	271,4
19	2 L. MONTELLA	ITA	DK MOTORSPORT	Yamaha YZF R6	*	1'55.266	2.263	0.009	10	158,565	264,7
20	34 K. MANFREDI	ITA	Altogoo Racing Team	Yamaha YZF R6	*	1'55.304	2.301	0.038	10	158,513	266,0
21	78 H. OKUBO	JPN	Dynavolt Honda	Honda CBR600RR		1'55.333	2.330	0.029	9	158,473	266,7
22	6 M. HERRERA	ESP	Altogoo Racing Team	Yamaha YZF R6		1'55.465	2.462	0.132	8	158,292	268,7
23	47 A. BASSANI	ITA	Soradis Yamaha Motoxracing	Yamaha YZF R6	*	1'55.679	2.676	0.214	9	157,999	262,8
24	84 L. CRESSON	BEL	OXXO Yamaha Team Toth	Yamaha YZF R6		1'55.741	2.738	0.062	10	157,915	264,1
25	52 P. HOBELSBERGER	GER	Dynavolt Honda	Honda CBR600RR		1'55.976	2.973	0.235	9	157,595	266,0

Qualifying Lap Time (107% of 1'53.003): 2'00.914

* WorldSSP Challenge

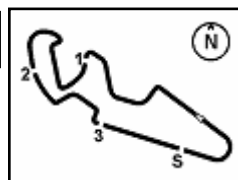
AIR	Humidity:	58%	Temp:	23°C
TRACK	Condition:	Dry	Temp:	35°C

Records	Pole (QP)	2015 J.Cluzel	1'53.138	161,550	Km/h
	Race (RC)	2015 P.Jacobsen	1'54.605	159,480	Km/h
	All Times (QP)	2015 J.Cluzel	1'53.138	161,550	Km/h

Start 05/09/2020 11:40 End 12:07 The results are provisional until the end of the time limit for protests and appeals and the completion of the technical checks.

These data/results cannot be reproduced, stored and/or transmitted in whole or in part by any manner of electronic, mechanical, photocopying, recording, broadcasting or otherwise now known or herein after developed without the previous express consent by the copyright owner, except for reproduction in daily press and regular printed publications on sale to the public within 60 days of the event related to those data/results and always provided that copyright symbol appears together as follows below.

© DORNA WSBK ORGANIZATION Srl 2020



Pirelli Teruel Round, 4 - 6 September 2020

Results Tissot Superpole

Session Highlights

Local Time	No. Rider	Description
11.40.00		Start
11.41.00		WorldSBK Works on bikes are allowed
11.43.02	9 G. HENDRA PRATAMA	On Asphalt - Re-Joined - Turn 12
11.44.00		WorldSSP Pit Intervention Time: 1min 11secs
11.46.37	25 A. VERDOIA	On Asphalt - Re-Joined - Turn 13
11.47.17	61 C. ONCU	On Asphalt - Re-Joined - Turn 1
11.48.08	44 L. MAHIAS	Crashed - Turn 9
11.48.21	44 L. MAHIAS	Re-joined
11.49.00	84 L. CRESSON	On Asphalt - Re-Joined - Turn 1
11.49.13	12 A. RUIZ CARRANZA	On Asphalt - Re-Joined - Turn 5
11.49.58	56 P. SEBESTYEN	On Asphalt - Re-Joined - Turn 1
11.50.06	6 M. HERRERA	Current Lap Cancelled - Exceeded Track Limits - Turn 3
11.50.17		New All Time Lap Record
11.50.31	52 P. HOBELSBERGER	On Asphalt - Re-Joined - Turn 14
11.50.55	83 L. EPIS	On Asphalt - Re-Joined - Turn 16
11.52.30	4 S. ODENDAAL	On Asphalt - Re-Joined - Turn 12
11.52.42	34 K. MANFREDI	Lap Cancelled (2'03.449) - Exceeded Track Limits - Turn 11
11.59.23	81 M. GONZALEZ	On Asphalt - Re-Joined - Turn 3
11.59.42	3 R. DE ROSA	Lap Cancelled (2'04.062) - Exceeded Track Limits - Turn 5
11.59.54	5 P. OETTL	On Asphalt - Re-Joined - Turn 5
11.59.59	12 A. RUIZ CARRANZA	On Asphalt - Turn 12
12.00.27	81 M. GONZALEZ	On Asphalt - Re-Joined - Turn 8
12.02.00	5 P. OETTL	Crashed - Turn 10
12.07.02		End Of Session
12.50.11	16 J. CLUZEL	Lap Cancelled (1'53.122) - Not slowing down under yellow flag
12.50.12	44 L. MAHIAS	Lap Cancelled (1'53.935) - Not slowing down under yellow flag

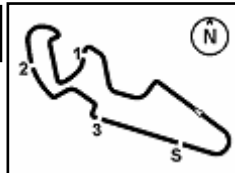
Fastest Laps Sequence

No.	Rider	Nat	Team	Bike	Local Time	Time	Gap	Avg
47	A. BASSANI	ITA	Soradis Yamaha Motoxacing	Yamaha YZF R6	11:44'26.758	1'56.037		157,512
81	M. GONZALEZ	ESP	Kawasaki ParkinGO Team	Kawasaki ZX-6R	11:44'43.112	1'55.422	-0.615	158,351
61	C. ONCU	TUR	Turkish Racing Team	Kawasaki ZX-6R	11:44'45.607	1'55.415	-0.007	158,361
4	S. ODENDAAL	RSA	EAB Ten Kate Racing	Yamaha YZF R6	11:44'45.995	1'55.399	-0.016	158,383
32	I. VINALES	ESP	Kallio Racing	Yamaha YZF R6	11:44'47.987	1'54.533	-0.866	159,580
5	P. OETTL	GER	Kawasaki Puccetti Racing	Kawasaki ZX-6R	11:45'06.398	1'54.186	-0.347	160,065
44	L. MAHIAS	FRA	Kawasaki Puccetti Racing	Kawasaki ZX-6R	11:45'06.578	1'54.034	-0.152	160,279
16	J. CLUZEL	FRA	GMT94 Yamaha	Yamaha YZF R6	11:45'20.152	1'53.687	-0.347	160,768
55	A. LOCATELLI	ITA	BARDAHL Evan Bros. WorldSSP Team	Yamaha YZF R6	11:45'50.499	1'53.246	-0.441	161,394
55	A. LOCATELLI	ITA	BARDAHL Evan Bros. WorldSSP Team	Yamaha YZF R6	11:47'43.579	1'53.080	-0.166	161,631
55	A. LOCATELLI	ITA	BARDAHL Evan Bros. WorldSSP Team	Yamaha YZF R6	11:49'36.582	1'53.003	-0.077	161,741

Start 05/09/2020 11:40 End 12:07 The results are provisional until the end of the time limit for protests and appeals and the completion of the technical checks.

These data/results cannot be reproduced, stored and/or transmitted in whole or in part by any manner of electronic, mechanical, photocopying, recording, broadcasting or otherwise now known or herein after developed without the previous express consent by the copyright owner, except for reproduction in daily press and regular printed publications on sale to the public within 60 days of the event related to those data/results and always provided that copyright symbol appears together as follows below.

© DORNA WSBK ORGANIZATION Srl 2020



MotorLand Aragon 5.077 m

Pirelli Teruel Round, 4 - 6 September 2020
Best Sectors & Speed Tissot Superpole

BEST LAP		
1	55 A. LOCATELLI	Yamaha YZF R6 1'53.003
2	32 I. VINALES	Yamaha YZF R6 1'53.213
3	3 R. DE ROSA	MV Agusta F3 675 1'53.497
4	16 J. CLUZEL	Yamaha YZF R6 1'53.687
5	44 L. MAHIAS	Kawasaki ZX-6R 1'54.034
6	5 P. OETTL	Kawasaki ZX-6R 1'54.186
7	38 H. SOOMER	Yamaha YZF R6 1'54.271
8	81 M. GONZALEZ	Kawasaki ZX-6R 1'54.306
9	4 S. ODENDAAL	Yamaha YZF R6 1'54.338
10	56 P. SEBESTYEN	Yamaha YZF R6 1'54.395
11	61 C. ONCU	Kawasaki ZX-6R 1'54.520
12	94 C. PEROLARI	Yamaha YZF R6 1'54.568
13	99 D. WEBB	Yamaha YZF R6 1'54.690
14	22 F. FULIGNI	MV Agusta F3 675 1'54.881
15	83 L. EPIS	Yamaha YZF R6 1'55.200
16	12 A. RUIZ CARRANZA	Yamaha YZF R6 1'55.237
17	9 G. HENDRA PRATAMA	Yamaha YZF R6 1'55.247
18	25 A. VERDOIA	Yamaha YZF R6 1'55.257
19	2 L. MONTELLA	Yamaha YZF R6 1'55.266
20	34 K. MANFREDI	Yamaha YZF R6 1'55.304
21	78 H. OKUBO	Honda CBR600RR 1'55.333
22	6 M. HERRERA	Yamaha YZF R6 1'55.465
23	47 A. BASSANI	Yamaha YZF R6 1'55.679
24	84 L. CRESSON	Yamaha YZF R6 1'55.741
25	52 P. HOBELSBERGER	Honda CBR600RR 1'55.976

SPEED		
1	32 I. VINALES	Yamaha YZF R6 273,4
2	9 G. HENDRA PRATAMA	Yamaha YZF R6 271,4
3	25 A. VERDOIA	Yamaha YZF R6 271,4
4	16 J. CLUZEL	Yamaha YZF R6 270,7
5	81 M. GONZALEZ	Kawasaki ZX-6R 270,7
6	22 F. FULIGNI	MV Agusta F3 675 270,0
7	94 C. PEROLARI	Yamaha YZF R6 270,0
8	12 A. RUIZ CARRANZA	Yamaha YZF R6 269,3
9	38 H. SOOMER	Yamaha YZF R6 269,3
10	6 M. HERRERA	Yamaha YZF R6 268,7
11	55 A. LOCATELLI	Yamaha YZF R6 268,7
12	99 D. WEBB	Yamaha YZF R6 268,0
13	4 S. ODENDAAL	Yamaha YZF R6 267,3
14	44 L. MAHIAS	Kawasaki ZX-6R 267,3
15	3 R. DE ROSA	MV Agusta F3 675 267,3
16	78 H. OKUBO	Honda CBR600RR 266,7
17	34 K. MANFREDI	Yamaha YZF R6 266,0
18	52 P. HOBELSBERGER	Honda CBR600RR 266,0
19	56 P. SEBESTYEN	Yamaha YZF R6 265,4
20	83 L. EPIS	Yamaha YZF R6 265,4
21	2 L. MONTELLA	Yamaha YZF R6 264,7
22	61 C. ONCU	Kawasaki ZX-6R 264,7
23	5 P. OETTL	Kawasaki ZX-6R 264,1
24	84 L. CRESSON	Yamaha YZF R6 264,1
25	47 A. BASSANI	Yamaha YZF R6 262,8

SEG. 1			SEG. 2			SEG. 3			SEG. 4		
1	55 A. LOCATELLI	31.886	1	55 A. LOCATELLI	31.673	1	32 I. VINALES	21.486	1	55 A. LOCATELLI	27.712
2	3 R. DE ROSA	32.041	2	16 J. CLUZEL	31.731	2	55 A. LOCATELLI	21.520	2	32 I. VINALES	27.844
3	16 J. CLUZEL	32.069	3	32 I. VINALES	31.757	3	3 R. DE ROSA	21.577	3	3 R. DE ROSA	27.856
4	44 L. MAHIAS	32.108	4	3 R. DE ROSA	31.765	4	16 J. CLUZEL	21.603	4	16 J. CLUZEL	27.884
5	5 P. OETTL	32.124	5	5 P. OETTL	31.818	5	44 L. MAHIAS	21.693	5	94 C. PEROLARI	27.902
6	32 I. VINALES	32.126	6	4 S. ODENDAAL	31.910	6	81 M. GONZALEZ	21.775	6	81 M. GONZALEZ	27.913
7	38 H. SOOMER	32.172	7	38 H. SOOMER	31.910	7	61 C. ONCU	21.792	7	9 G. HENDRA PRATAMA	27.916
8	81 M. GONZALEZ	32.315	8	44 L. MAHIAS	32.007	8	38 H. SOOMER	21.819	8	38 H. SOOMER	27.953
9	4 S. ODENDAAL	32.345	9	94 C. PEROLARI	32.046	9	56 P. SEBESTYEN	21.841	9	25 A. VERDOIA	27.955
10	61 C. ONCU	32.359	10	81 M. GONZALEZ	32.109	10	94 C. PEROLARI	21.869	10	4 S. ODENDAAL	27.962
11	56 P. SEBESTYEN	32.370	11	56 P. SEBESTYEN	32.123	11	5 P. OETTL	21.872	11	5 P. OETTL	27.971
12	2 L. MONTELLA	32.460	12	22 F. FULIGNI	32.132	12	22 F. FULIGNI	21.889	12	99 D. WEBB	28.006
13	99 D. WEBB	32.461	13	99 D. WEBB	32.154	13	4 S. ODENDAAL	21.941	13	6 M. HERRERA	28.009
14	94 C. PEROLARI	32.503	14	61 C. ONCU	32.205	14	25 A. VERDOIA	21.985	14	61 C. ONCU	28.009
15	9 G. HENDRA PRATAMA	32.538	15	83 L. EPIS	32.263	15	9 G. HENDRA PRATAMA	21.992	15	44 L. MAHIAS	28.013
16	34 K. MANFREDI	32.550	16	25 A. VERDOIA	32.285	16	99 D. WEBB	21.998	16	12 A. RUIZ CARRANZA	28.035
17	22 F. FULIGNI	32.563	17	12 A. RUIZ CARRANZA	32.297	17	12 A. RUIZ CARRANZA	21.999	17	56 P. SEBESTYEN	28.052
18	83 L. EPIS	32.664	18	34 K. MANFREDI	32.317	18	2 L. MONTELLA	22.047	18	22 F. FULIGNI	28.083
19	78 H. OKUBO	32.673	19	2 L. MONTELLA	32.333	19	47 A. BASSANI	22.061	19	78 H. OKUBO	28.155
20	84 L. CRESSON	32.686	20	9 G. HENDRA PRATAMA	32.336	20	6 M. HERRERA	22.064	20	83 L. EPIS	28.158
21	25 A. VERDOIA	32.734	21	47 A. BASSANI	32.343	21	78 H. OKUBO	22.069	21	52 P. HOBELSBERGER	28.219
22	52 P. HOBELSBERGER	32.777	22	84 L. CRESSON	32.384	22	83 L. EPIS	22.074	22	34 K. MANFREDI	28.224
23	6 M. HERRERA	32.799	23	6 M. HERRERA	32.412	23	52 P. HOBELSBERGER	22.123	23	47 A. BASSANI	28.287
24	47 A. BASSANI	32.836	24	78 H. OKUBO	32.436	24	34 K. MANFREDI	22.130	24	84 L. CRESSON	28.296
25	12 A. RUIZ CARRANZA	32.870	25	52 P. HOBELSBERGER	32.532	25	84 L. CRESSON	22.236	25	2 L. MONTELLA	28.403

05/09/2020

These data/results cannot be reproduced, stored and/or transmitted in whole or in part by any manner of electronic, mechanical, photocopying, recording, broadcasting or otherwise now known or herein after developed without the previous express consent by the copyright owner, except for reproduction in daily press and regular printed publications on sale to the public within 60 days of the event related to those data/results and always provided that copyright symbol appears together as follows below.

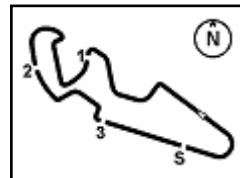
© DORNA WSBK ORGANIZATION Srl 2020

FICR PERUGIA TIMING


Official Tyre Supplier



Official Timekeeper



MotorLand Aragon 5.077 m

Pirelli Teruel Round, 4 - 6 September 2020
Ideal Times Tissot Supercup

No.	Rider	Nat	Bike	Seg. 1	Seg. 2	Seg. 3	Seg. 4	Ideal Time		
				Diff. 1	Diff. 2	Diff. 3	Diff. 4	Best Lap	Pos.	Diff.
1	55 A. LOCATELLI	ITA	Yamaha YZF R6	31.886	31.673 +0.151	21.520 +0.061	27.712	1'52.791 1'53.003	1	0.212
2	32 I. VINALES	ESP	Yamaha YZF R6	32.126	31.757	21.486	27.844	1'53.213 1'53.213	2	
3	3 R. DE ROSA	ITA	MV Agusta F3 675	32.041	31.765 +0.117	21.577	27.856 +0.141	1'53.239 1'53.497	3	0.258
4	16 J. CLUZEL	FRA	Yamaha YZF R6	32.069 +0.222	31.731 +0.037	21.603 +0.141	27.884	1'53.287 1'53.687	4	0.400
5	5 P. OETTL	GER	Kawasaki ZX-6R	32.124 +0.141	31.818	21.872 +0.221	27.971 +0.039	1'53.785 1'54.186	6	0.401
6	44 L. MAHIAS	FRA	Kawasaki ZX-6R	32.108 +0.030	32.007 +0.010	21.693 +0.151	28.013 +0.022	1'53.821 1'54.034	5	0.213
7	38 H. SOOMER	EST	Yamaha YZF R6	32.172 +0.203	31.910	21.819 +0.214	27.953	1'53.854 1'54.271	7	0.417
8	81 M. GONZALEZ	ESP	Kawasaki ZX-6R	32.315	32.109	21.775	27.913 +0.194	1'54.112 1'54.306	8	0.194
9	4 S. ODENDAAL	RSA	Yamaha YZF R6	32.345	31.910 +0.133	21.941 +0.047	27.962	1'54.158 1'54.338	9	0.180
10	94 C. PEROLARI	FRA	Yamaha YZF R6	32.503 +0.080	32.046	21.869	27.902 +0.168	1'54.320 1'54.568	12	0.248
11	61 C. ONCU	TUR	Kawasaki ZX-6R	32.359	32.205	21.792	28.009 +0.155	1'54.365 1'54.520	11	0.155
12	56 P. SEBESTYEN	HUN	Yamaha YZF R6	32.370	32.123 +0.009	21.841	28.052	1'54.386 1'54.395	10	0.009
13	99 D. WEBB	GBR	Yamaha YZF R6	32.461	32.154	21.998 +0.071	28.006	1'54.619 1'54.690	13	0.071
14	22 F. FULIGNI	ITA	MV Agusta F3 675	32.563 +0.214	32.132	21.889	28.083	1'54.667 1'54.881	14	0.214
15	9 G. HENDRA PRATAMA	INA	Yamaha YZF R6	32.538 +0.375	32.336	21.992 +0.090	27.916	1'54.782 1'55.247	17	0.465
16	25 A. VERDOIA	FRA	Yamaha YZF R6	32.734 +0.099	32.285 +0.103	21.985	27.955 +0.096	1'54.959 1'55.257	18	0.298
17	83 L. EPIS	AUS	Yamaha YZF R6	32.664 +0.041	32.263	22.074	28.158	1'55.159 1'55.200	15	0.041
18	12 A. RUIZ CARRANZA	ESP	Yamaha YZF R6	32.870 +0.036	32.297	21.999	28.035	1'55.201 1'55.237	16	0.036
19	34 K. MANFREDI	ITA	Yamaha YZF R6	32.550	32.317	22.130	28.224 +0.083	1'55.221 1'55.304	20	0.083
20	2 L. MONTELLA	ITA	Yamaha YZF R6	32.460 +0.023	32.333	22.047	28.403	1'55.243 1'55.266	19	0.023
21	6 M. HERRERA	ESP	Yamaha YZF R6	32.799 +0.128	32.412 +0.053	22.064	28.009	1'55.284 1'55.465	22	0.181
22	78 H. OKUBO	JPN	Honda CBR600RR	32.673	32.436	22.069	28.155	1'55.333 1'55.333	21	
23	47 A. BASSANI	ITA	Yamaha YZF R6	32.836 +0.089	32.343 +0.062	22.061	28.287 +0.001	1'55.527 1'55.679	23	0.152
24	84 L. CRESSON	BEL	Yamaha YZF R6	32.686	32.384	22.236	28.296 +0.139	1'55.602 1'55.741	24	0.139
25	52 P. HOBELSBERGER	GER	Honda CBR600RR	32.777	32.532 +0.034	22.123 +0.291	28.219	1'55.651 1'55.976	25	0.325
Overall Ideal Time				31.886	31.673	21.486	27.712	1'52.757		

05/09/2020

These data/results cannot be reproduced, stored and/or transmitted in whole or in part by any manner of electronic, mechanical, photocopying, recording, broadcasting or otherwise now known or herein after developed without the previous express consent by the copyright owner, except for reproduction in daily press and regular printed publications on sale to the public within 60 days of the event related to those data/results and always provided that copyright symbol appears together as follows below.

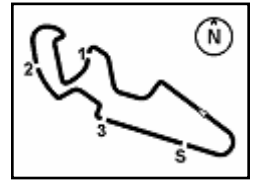
© DORNA WSBK ORGANIZATION Srl 2020

FICR PERUGIA TIMING


Official Tyre Supplier



Official Timekeeper



Pirelli Teruel Round, 4 - 6 September 2020

Chronological Analysis Tissot Superpole

Lap	Seg.1	Seg.2	Seg.3	Seg.4	Lap Time	km/h	Local Time
4	32.838	32.521	22.207	28.391	1'55.957	262,1	11:48'37.382
5	32.991	32.627	22.311	29.075	1'57.004	251,7	11:50'34.386
6	32.940	33.050	22.882	34.577	2'03.449CP	251,2	11:52'37.835
7	3'25.552	32.553	22.225	28.670	4'49.000P	260,2	11:57'26.835
8	32.550	32.317	22.130	28.307	1'55.304	262,1	11:59'22.139
9	36.542	32.778	22.458	28.490	2'00.268	263,4	12:01'22.407
10	32.889	32.406	22.146	28.224	1'55.665	264,7	12:03'18.072
11	32.713	32.374	22.200	28.369	1'55.656	266,0	12:05'13.728

21° 78 H. OKUBO (1'55.333)							
Lap	Seg.1	Seg.2	Seg.3	Seg.4	Lap Time	km/h	Local Time
1		34.046	24.550	32.496		216,0	11:42'51.125
2	33.642	33.567	22.339	28.563	1'58.111	264,7	11:44'49.236
3	33.637	32.579	22.465	28.965	1'57.646	264,1	11:46'46.882
4	32.700	32.485	22.157	28.406	1'55.748	265,4	11:48'42.630
5	33.821	35.091	22.578	36.792	2'08.282P	237,9	11:50'50.912
6	6'31.442	33.883	22.627	28.339	7'56.291P	264,7	11:58'47.203
7	32.673	32.436	22.069	28.155	1'55.333	266,7	12:00'42.536
8	32.729	32.545	22.443	28.339	1'56.056	264,1	12:02'38.592
9	32.717	32.588	22.150	28.450	1'55.905	260,9	12:04'34.497
10	39.019	39.624	22.799	28.967	2'10.409	260,9	12:06'44.906

22° 6 M. HERRERA (1'55.465)							
Lap	Seg.1	Seg.2	Seg.3	Seg.4	Lap Time	km/h	Local Time
1		34.327	23.871	28.737		262,1	11:42'48.441
2	33.183	32.673	22.089	28.324	1'56.269	264,7	11:44'44.710
3	32.998	32.617	22.573	28.318	1'56.506	268,7	11:46'41.216
4	32.888	32.412	22.110	28.338	1'55.748	266,0	11:48'36.964
5	33.338	39.983	24.186	35.152	2'12.659CP	265,4	11:50'49.623
6	6'45.532	36.716	32.075	29.128	8'23.451P	238,9	11:59'13.074
7	33.291	32.804	30.659	28.081	2'04.835	268,7	12:01'17.909
8	32.927	32.465	22.064	28.009	1'55.465	268,7	12:03'13.374
9	32.799	32.630	22.245	28.173	1'55.847	265,4	12:05'09.221

23° 47 A. BASSANI (1'55.679)							
Lap	Seg.1	Seg.2	Seg.3	Seg.4	Lap Time	km/h	Local Time
1		34.209	23.553	30.641		254,7	11:42'30.721
2	32.911	32.447	22.150	28.529	1'56.037	257,8	11:44'26.758
3	33.803	32.752	22.347	28.412	1'57.314	260,9	11:46'24.072
4	32.899	32.378	22.196	28.446	1'55.919	259,0	11:48'19.991
5	34.953	33.130	22.744	35.419	2'06.246P	258,4	11:50'26.237
6	6'01.717	33.861	23.217	28.608	7'27.403P	258,4	11:57'53.640
7	33.070	32.343	22.075	28.400	1'55.888	258,4	11:59'49.528
8	32.925	32.405	22.061	28.288	1'55.679	261,5	12:01'45.207
9	32.836	32.425	22.264	28.287	1'55.812	262,8	12:03'41.019
10	39.806	35.333	23.144	28.674	2'06.957	259,0	12:05'47.976

24° 84 L. CRESSON (1'55.741)							
Lap	Seg.1	Seg.2	Seg.3	Seg.4	Lap Time	km/h	Local Time
1		34.098	22.653	35.285		183,4	11:42'45.194
2	33.031	32.454	22.377	28.410	1'56.272	259,6	11:44'41.466
3	32.981	32.397	22.328	28.296	1'56.002	264,1	11:46'37.468
4	32.915	32.640	22.328	28.703	1'56.586	255,9	11:48'34.054
5	40.962	32.741	22.438	28.574	2'04.715	261,5	11:50'38.769
6	32.686	32.384	22.236	28.435	1'55.741	262,1	11:52'34.510
7	33.054	32.650	22.712	34.907	2'03.323P	254,7	11:54'37.833
8	3'23.230	32.864	22.955	28.692	4'47.741P	259,0	11:59'25.574
9	32.801	32.499	22.241	28.365	1'55.906	262,1	12:01'21.480
10	32.801	32.542	22.301	28.347	1'55.991	261,5	12:03'17.471
11	32.833	32.431	22.402	28.503	1'56.169	260,9	12:05'13.640

05/09/2020 P = Pits In/Out - C = Lap Time Cancelled

These data/results cannot be reproduced, stored and/or transmitted in whole or in part by any manner of electronic, mechanical, photocopying, recording, broadcasting or otherwise now known or herein after developed without the previous express consent by the copyright owner, except for reproduction in daily press and regular printed publications on sale to the public within 60 days of the event related to those data/results and always provided that copyright symbol appears together as follows below.

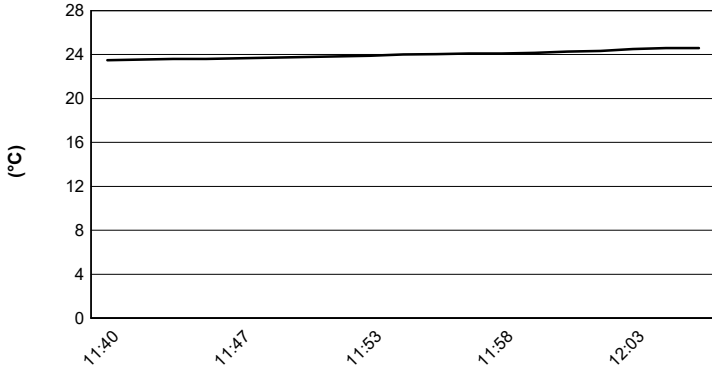
© DORNA WSBK ORGANIZATION Srl 2020

Pirelli Teruel Round, 4 - 6 September 2020

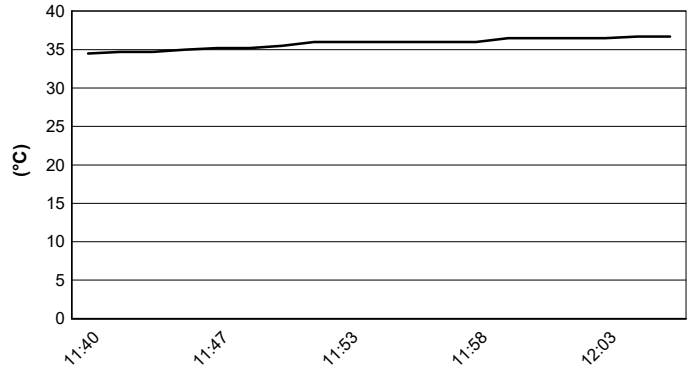
Weather Report Tissot Superpole

Session started 11:40 - Session ended 12:07

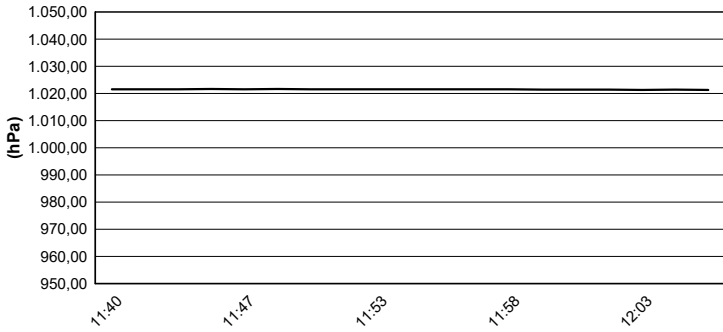
Air Temperature



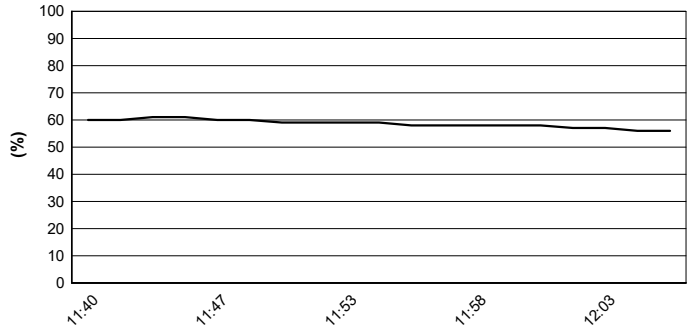
Track Temperature



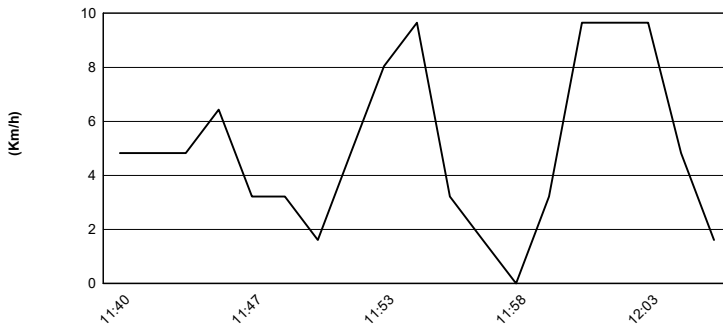
Air Pressure



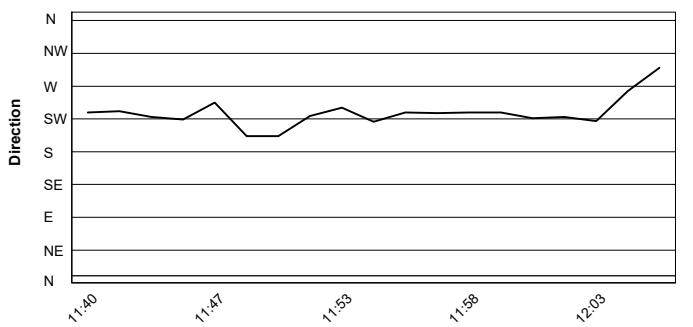
Humidity



Wind Speed



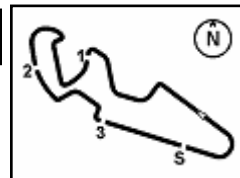
Wind Direction



05/09/2020

These data/results cannot be reproduced, stored and/or transmitted in whole or in part by any manner of electronic, mechanical, photocopying, recording, broadcasting or otherwise now known or herein after developed without the previous express consent by the copyright owner, except for reproduction in daily press and regular printed publications on sale to the public within 60 days of the event related to those data/results and always provided that copyright symbol appears together as follows below.

© DORNA WSBK ORGANIZATION Srl 2020



Pirelli Teruel Round, 4 - 6 September 2020

Superpole Ranking

	2017	2018	2019	2020
01 Phillip Island	Jacobsen (Usa) MvA 1'33.128 (171,8 Km/h)	Mahias (Fra) Yam 1'33.160 (171,8 Km/h)	Caricasulo (Ita) Yam 1'32.604 (172,8 Km/h)	Locatelli (Ita) Yam 1'32.176 (173,6 Km/h)
02 Jerez	Caricasulo (Ita) Yam 1'43.285 (154,2 Km/h)		Krummenacher (Sui) Yam 1'41.775 (156,5 Km/h)	Locatelli (Ita) Yam 1'42.214 (155,8 Km/h)
03 Portimão	Sofuoglu (Tur) Kaw 1'45.541 (156,6 Km/h)	Mahias (Fra) Yam 1'44.588 (158,1 Km/h)	Caricasulo (Ita) Yam 1'44.220 (158,6 Km/h)	Locatelli (Ita) Yam 1'44.627 (158,0 Km/h)
04 Aragón	Jacobsen (Usa) MvA 1'54.948 (159,0 Km/h)	Cortese (Ger) Yam 1'53.567 (160,9 Km/h)	Gradinger (Aut) Yam 1'53.972 (160,4 Km/h)	Locatelli (Ita) Yam 1'53.205 (161,5 Km/h)
05 Teruel				Locatelli (Ita) Yam 1'53.003 (161,7 Km/h)
06 Barcelona				
07 Magny-Cours	Tuuli (Fin) Yam 1'43.833 (152,9 Km/h)	Caricasulo (Ita) Yam 1'40.416 (158,1 Km/h)	Smith (Gbr) Kaw 1'56.287 (136,6 Km/h)	
08 Estoril				

2020

5 **A. Locatelli**

ALL TIMES

34	K. Sofuoglu	3	K. Curtain	1	B. MacLeod
22	S. Charpentier	3	I. MacPherson	1	F. Marino
21	J. Cluzel	3	A. Pitt	1	M. Meregalli
17	B. Parkes	3	D. Salom	1	S. Morais
15	K. Muggeridge	3	R. Xaus	1	C. Perolari
14	F. Foret	2	P. Bontempi	1	P. Riba
14	S. Lowes	2	V. Guareschi	1	S. Sanna
10	C. Crutchlow	2	M. Lagrive	1	K. Smith
8	F. Caricasulo	2	J. Lascorz	1	L. Stapleford
8	L. Mahias	2	M. Pirro	1	N. Tuuli
6	S. Chambon	2	L. Scassa	1	J. Vd Goorbergh
6	E. Laverty	2	J. Teuchert	1	J. Whitham
5	P. Casoli	2	M. van der Mark		
5	K. Fujiwara	1	K. Coghlan		
5	P. Jacobsen	1	C. Davies		
5	A. Locatelli	1	M. Fabrizio		
5	C. Vermeulen	1	T. Gradinger		
4	R. Krummenacher	1	C. Jones		
3	S. Cortese	1	C. Kellner		

05/09/2020

These data/results cannot be reproduced, stored and/or transmitted in whole or in part by any manner of electronic, mechanical, photocopying, recording, broadcasting or otherwise now known or herein after developed without the previous express consent by the copyright owner, except for reproduction in daily press and regular printed publications on sale to the public within 60 days of the event related to those data/results and always provided that copyright symbol appears together as follows below.

© DORNA WSBK ORGANIZATION Srl 2020

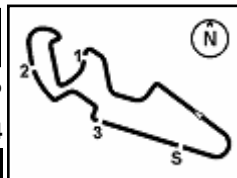
FICR PERUGIA TIMING



Official Tyre Supplier



Official Timekeeper

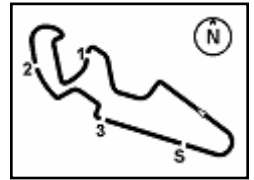

Pirelli Teruel Round, 4 - 6 September 2020
Tissot Superpole Award

	Points	Points From First	Points From Previous	March 1 PHILLIP ISLAND	August 2 JEREZ	August 9 PORTIMÃO	August 30 ARAGON	September 6 TERUEL	September 20 BARCELONA	October 4 MAGNY-COURS	October 18 ESTORIL									
1 LOCATELLI Andrea (ITA)	60			12	12	12	12	12												
2 CLUZEL Jules (FRA)	36	24		6	9	9	6	6												
3 MAHIAS Lucas (FRA)	30	30	6	7	6	5	7	5												
4 OETTL Philipp (GER)	28	32	2	4	7	4	9	4												
5 VINALES Isaac (ESP)	25	35	3	2	5	6	3	9												
6 DE ROSA Raffaele (ITA)	20	40	5	5	3	1	4	7												
7 PEROLARI Corentin (FRA)	12	48	8	1	4	7														
8 SOOMER Hannes (EST)	11	49	1			3	5	3												
9 KRUMMENACHER Randy (SUI)	9	51	2	9																
10 ODENDAAL Steven (RSA)	6	54	3	3			2	1												
11 GONZALEZ Manuel (ESP)	6	54	0		2	2		2												
12 SEBESTYEN Peter (HUN)	1	59	5				1													
13 OKUBO Hikari (JPN)	1	59	0		1															

05/09/2020 Odd points columns: Tissot Superpole Even points columns: Tissot Superpole Race

These data/results cannot be reproduced, stored and/or transmitted in whole or in part by any manner of electronic, mechanical, photocopying, recording, broadcasting or otherwise now known or herein after developed without the previous express consent by the copyright owner, except for reproduction in daily press and regular printed publications on sale to the public within 60 days of the event related to those data/results and always provided that copyright symbol appears together as follows below.

© DORNA WSBK ORGANIZATION Srl 2020



MotorLand Aragon 5.077 m

Pirelli Teruel Round, 4 - 6 September 2020

Starting Grid - Race 1

15 Laps x 5,077 km = 76,155 km

Pos	Number	Name	Team	Time	Grid
1	55	LOCATELLI A.	Yamaha	1'53.003	1
2	16	CLUZEL J.	Yamaha	1'53.687	2
3	38	SOOMER H.	Yamaha	1'54.271	3
4	56	SEBESTYEN P.	Yamaha	1'54.395	4
5	99	WEBB D.	Yamaha	1'54.690	5
6	12	RUIZ CARRANZA A.	Yamaha	1'55.237	6
7	2	MONTELLA L.	Yamaha	1'55.266	7
8	6	HERRERA M.	Yamaha	1'55.465	8
9	52	HOBELSBERGER P.	Honda	1'55.976	9
10	32	VINALES I.	Yamaha	1'53.213	
11	44	MAHIAS L.	Kawasaki	1'54.034	
12	81	GONZALEZ M.	Kawasaki	1'54.306	
13	61	ONCU C.	Kawasaki	1'54.520	
14	22	FULIGNI F.	MV Agusta	1'54.881	
15	9	HENDRA PRATAMA G	Yamaha	1'55.247	
16	34	MANFREDI K.	Yamaha	1'55.304	
17	47	BASSANI A.	Yamaha	1'55.679	
18	3	DE ROSA R.	MV Agusta	1'53.497	
19	4	ODENDAAL S.	Yamaha	1'54.338	
20	78	OKUBO H.	Honda	1'55.333	
21	5	OETTL P.	Kawasaki	1'54.186	
22	83	EPIS L.	Yamaha	1'55.200	
23	25	VERDOIA A.	Yamaha	1'55.257	
24	84	CRESSON L.	Yamaha	1'55.741	
25	94	PEROLARI C.	Yamaha	1'54.568	

05/09/2020 The Race Director

These data/results cannot be reproduced, stored and/or transmitted in whole or in part by any manner of electronic, mechanical, photocopying, recording, broadcasting or otherwise now known or herein after developed without the previous express consent by the copyright owner, except for reproduction in daily press and regular printed publications on sale to the public within 60 days of the event related to those data/results and always provided that copyright symbol appears together as follows below.

© DORNA WSBK ORGANIZATION Srl 2020

FICR PERUGIA TIMING



Official Tyre Supplier



Official Timekeeper