

## Motul Argentinean Round, 15-17 October 2021

### Results Free Practice 2nd Session

San Juan Villicum Circuit 4.276 m

1 / 2

No.	Rider	Nat	Team	Bike	Time	Gap	Rel.	Laps	Speed	
									Avg	Max
1	16 J. CLUZEL	FRA	GMT94 Yamaha	Yamaha YZF R6	<b>1'41.926</b>			21	151,027	<b>268,9</b>
2	81 M. GONZALEZ	ESP	Yamaha ParkinGo Team	Yamaha YZF R6	<b>1'42.721</b>	0.795	0.795	21	149,858	<b>275,0</b>
3	77 D. AEGERTER	SUI	Ten Kate Racing Yamaha	Yamaha YZF R6	<b>1'42.833</b>	0.907	0.112	20	149,695	<b>269,6</b>
4	56 P. SEBESTYEN	HUN	Evan Bros. WorldSSP Yamaha Team	Yamaha YZF R6	<b>1'42.941</b>	1.015	0.108	19	149,538	<b>270,9</b>
5	66 N. TUULI	FIN	MV Agusta Corse Clienti	MV Agusta F3 675	<b>1'42.996</b>	1.070	0.055	16	149,458	<b>259,9</b>
6	28 G. VAN STRAALEN	NED	EAB Racing Team	Yamaha YZF R6	<b>1'43.085</b>	1.159	0.089	18	149,329	<b>267,6</b>
7	3 R. DE ROSA	ITA	Orelac Racing VerdNatura	Kawasaki ZX-6R	<b>1'43.097</b>	1.171	0.012	21	149,312	<b>267,6</b>
8	4 S. ODENDAAL	RSA	Evan Bros. WorldSSP Yamaha Team	Yamaha YZF R6	<b>1'43.124</b>	1.198	0.027	17	149,273	<b>271,6</b>
9	61 C. ONCU	TUR	Kawasaki Puccetti Racing	Kawasaki ZX-6R	<b>1'43.162</b>	1.236	0.038	20	149,218	<b>265,6</b>
10	38 H. SOOMER	EST	Kallio Racing	Yamaha YZF R6	<b>1'43.180</b>	1.254	0.018	18	149,192	<b>270,2</b>
11	53 V. DEBISE	FRA	GMT94 Yamaha	Yamaha YZF R6	<b>1'43.241</b>	1.315	0.061	19	149,104	<b>264,9</b>
12	25 M. BRENNER	SUI	VFT Racing	Yamaha YZF R6	<b>1'43.407</b>	1.481	0.166	19	148,864	<b>265,6</b>
13	95 V. TAKALA	FIN	Kallio Racing	Yamaha YZF R6	<b>1'43.465</b>	1.539	0.058	19	148,781	<b>268,9</b>
14	40 U. ORRADRE	ESP	Yamaha MS Racing	Yamaha YZF R6	<b>1'43.533</b>	1.607	0.068	21	148,683	<b>269,6</b>
15	5 P. OETTL	GER	Kawasaki Puccetti Racing	Kawasaki ZX-6R	<b>1'43.802</b>	1.876	0.269	18	148,298	<b>272,9</b>
16	74 A. GONZALES	ARG	VFT Racing	Yamaha YZF R6	<b>1'44.021</b>	2.095	0.219	17	147,986	<b>264,9</b>
17	32 S. MORAIS	POR	Wojcik Racing Team	Yamaha YZF R6	<b>1'44.410</b>	2.484	0.389	21	147,434	<b>265,6</b>
18	24 L. TACCINI	ITA	Ten Kate Racing Yamaha	Yamaha YZF R6	<b>1'45.583</b>	3.657	1.173	18	145,796	<b>266,9</b>
19	64 J. BUIS	NED	G.A.P. MOTOZOO Racing by Puccetti	Kawasaki ZX-6R	<b>1'48.123</b>	6.197	2.540	19	142,371	<b>266,2</b>
20	57 M. PETRATTI	ARG	Yamaha MS Racing	Yamaha YZF R6	<b>1'48.679</b>	6.753	0.556	14	141,643	<b>260,5</b>

Qualifying Lap Time (107% of 1'41.926): 1'49.062

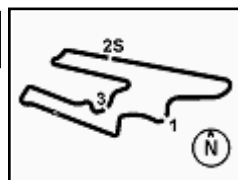
AIR	Humidity:	18%	Temp:	20°C
TRACK	Condition:	Dry	Temp:	39°C

Records	Pole	(SP2)	2018	L.Mahias	1'43.026	149,410	Km/h
	Race	(RC)	2019	L.Mahias	1'42.606	150,030	Km/h
	All Times	(RC)	2019	L.Mahias	1'42.606	150,030	Km/h

Start 15/10/2021 16:00 End 16:47 The results are provisional until the end of the time limit for protests and appeals and the completion of the technical checks.

These data/results cannot be reproduced, stored and/or transmitted in whole or in part by any manner of electronic, mechanical, photocopying, recording, broadcasting or otherwise now known or herein after developed without the previous express consent by the copyright owner, except for reproduction in daily press and regular printed publications on sale to the public within 60 days of the event related to those data/results and always provided that copyright symbol appears together as follows below.

© DORNA WSBK ORGANIZATION Srl 2021



## Motul Argentinean Round, 15-17 October 2021

### Results Free Practice 2nd Session

#### Session Highlights

Local Time	No. Rider	Description
16.00.00		Start
16.00.15		WorldSSP Pit Intervention Time: 1min 43secs
16.04.38	<b>40 U. ORRADRE</b>	Lap Cancelled (1'46.460) - Exceeded Track Limits - Turn 16
16.15.11	<b>5 P. OETTL</b>	Lap Cancelled (1'44.273) - Exceeded Track Limits - Turn 16
16.18.17	<b>61 C. ONCU</b>	Lap Cancelled (1'43.790) - Exceeded Track Limits - Turn 14
16.25.00	<b>95 V. TAKALA</b>	Lap Cancelled (1'43.948) - Exceeded Track Limits
16.25.25	<b>16 J. CLUZEL</b>	Lap Cancelled (1'56.517) - Exceeded Track Limits
16.27.30	<b>81 M. GONZALEZ</b>	Lap Cancelled (1'42.846) - Exceeded Track Limits
16.30.21	<b>5 P. OETTL</b>	Lap Cancelled (1'46.557) - Exceeded Track Limits
16.34.44		New All Time Lap Record
16.35.20	<b>81 M. GONZALEZ</b>	Lap Cancelled (1'43.257) - Exceeded Track Limits
16.35.34	<b>32 S. MORAIS</b>	On the Gravel - Turn 1
16.36.27	<b>32 S. MORAIS</b>	Re-joined
16.40.28	<b>66 N. TUULI</b>	Lap Cancelled (1'43.438) - Exceeded Track Limits - Turn 9
16.43.01	<b>53 V. DEBISE</b>	Lap Cancelled (1'47.549) - Exceeded Track Limits - Turn 16
16.47.23		End Of Session

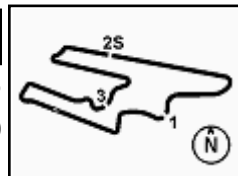
#### Fastest Laps Sequence

No.	Rider	Nat	Team	Bike	Local Time	Time	Gap	Avg
<b>61</b>	<b>C. ONCU</b>	TUR	Kawasaki Puccetti Racing	Kawasaki ZX-6R	16:03'49.391	<b>1'44.118</b>		147,848
<b>77</b>	<b>D. AEGERTER</b>	SUI	Ten Kate Racing Yamaha	Yamaha YZF R6	16:04'09.003	<b>1'43.637</b>	-0.481	148,534
<b>77</b>	<b>D. AEGERTER</b>	SUI	Ten Kate Racing Yamaha	Yamaha YZF R6	16:05'52.088	<b>1'43.085</b>	-0.552	149,329
<b>16</b>	<b>J. CLUZEL</b>	FRA	GMT94 Yamaha	Yamaha YZF R6	16:13'32.561	<b>1'42.997</b>	-0.088	149,457
<b>16</b>	<b>J. CLUZEL</b>	FRA	GMT94 Yamaha	Yamaha YZF R6	16:18'42.204	<b>1'42.927</b>	-0.070	149,558
<b>77</b>	<b>D. AEGERTER</b>	SUI	Ten Kate Racing Yamaha	Yamaha YZF R6	16:21'28.366	<b>1'42.916</b>	-0.011	149,574
<b>77</b>	<b>D. AEGERTER</b>	SUI	Ten Kate Racing Yamaha	Yamaha YZF R6	16:24'54.419	<b>1'42.833</b>	-0.083	149,695
<b>16</b>	<b>J. CLUZEL</b>	FRA	GMT94 Yamaha	Yamaha YZF R6	16:34'22.118	<b>1'42.324</b>	-0.509	150,440
<b>16</b>	<b>J. CLUZEL</b>	FRA	GMT94 Yamaha	Yamaha YZF R6	16:36'04.172	<b>1'42.054</b>	-0.270	150,838
<b>16</b>	<b>J. CLUZEL</b>	FRA	GMT94 Yamaha	Yamaha YZF R6	16:37'46.098	<b>1'41.926</b>	-0.128	151,027

Start 16:00 End 16:47 The results are provisional until the end of the time limit for protests and appeals and the completion of the technical checks.

These data/results cannot be reproduced, stored and/or transmitted in whole or in part by any manner of electronic, mechanical, photocopying, recording, broadcasting or otherwise now known or herein after developed without the previous express consent by the copyright owner, except for reproduction in daily press and regular printed publications on sale to the public within 60 days of the event related to those data/results and always provided that copyright symbol appears together as follows below.

© DORNA WSBK ORGANIZATION Srl 2021



## Motul Argentinean Round, 15-17 October 2021

### Free Practices Combined Results after FP2

San Juan Villicum Circuit 4.276 m

No.	Rider	Nat	Team	Bike	FP1	FP2	Time	Gap	Rel.	Avg	LL
1	<b>16 J. CLUZEL</b>	FRA	GMT94 Yamaha	Yamaha YZF R6	1'44.257	<b>1'41.926</b>	<b>1'41.926</b>			151,027	24
2	<b>81 M. GONZALEZ</b>	ESP	Yamaha ParkinGo Team	Yamaha YZF R6	1'43.173	<b>1'42.721</b>	<b>1'42.721</b>	0.795	0.795	149,858	37
3	<b>77 D. AEGERTER</b>	SUI	Ten Kate Racing Yamaha	Yamaha YZF R6	1'43.125	<b>1'42.833</b>	<b>1'42.833</b>	0.907	0.112	149,695	39
4	<b>56 P. SEBESTYEN</b>	HUN	Evan Bros. WorldSSP Yamaha Team	Yamaha YZF R6	1'44.030	<b>1'42.941</b>	<b>1'42.941</b>	1.015	0.108	149,538	37
5	<b>66 N. TUULI</b>	FIN	MV Agusta Corse Clienti	MV Agusta F3 675	1'44.207	<b>1'42.996</b>	<b>1'42.996</b>	1.070	0.055	149,458	33
6	<b>28 G. VAN STRAALLEN</b>	NED	EAB Racing Team	Yamaha YZF R6	1'44.887	<b>1'43.085</b>	<b>1'43.085</b>	1.159	0.089	149,329	36
7	<b>3 R. DE ROSA</b>	ITA	Orelac Racing VerdNatura	Kawasaki ZX-6R	1'43.741	<b>1'43.097</b>	<b>1'43.097</b>	1.171	0.012	149,312	39
8	<b>4 S. ODENDAAL</b>	RSA	Evan Bros. WorldSSP Yamaha Team	Yamaha YZF R6	1'44.042	<b>1'43.124</b>	<b>1'43.124</b>	1.198	0.027	149,273	36
9	<b>61 C. ONCU</b>	TUR	Kawasaki Puccetti Racing	Kawasaki ZX-6R	1'43.576	<b>1'43.162</b>	<b>1'43.162</b>	1.236	0.038	149,218	40
10	<b>38 H. SOOMER</b>	EST	Kallio Racing	Yamaha YZF R6	1'43.846	<b>1'43.180</b>	<b>1'43.180</b>	1.254	0.018	149,192	37
11	<b>53 V. DEBISE</b>	FRA	GMT94 Yamaha	Yamaha YZF R6	1'43.836	<b>1'43.241</b>	<b>1'43.241</b>	1.315	0.061	149,104	38
12	<b>25 M. BRENNER</b>	SUI	VFT Racing	Yamaha YZF R6	1'44.425	<b>1'43.407</b>	<b>1'43.407</b>	1.481	0.166	148,864	37
13	<b>95 V. TAKALA</b>	FIN	Kallio Racing	Yamaha YZF R6	1'44.330	<b>1'43.465</b>	<b>1'43.465</b>	1.539	0.058	148,781	39
14	<b>40 U. ORRADRE</b>	ESP	Yamaha MS Racing	Yamaha YZF R6	1'44.784	<b>1'43.533</b>	<b>1'43.533</b>	1.607	0.068	148,683	37
15	<b>5 P. OETTL</b>	GER	Kawasaki Puccetti Racing	Kawasaki ZX-6R	1'44.753	<b>1'43.802</b>	<b>1'43.802</b>	1.876	0.269	148,298	35
16	<b>74 A. GONZALES</b>	ARG	VFT Racing	Yamaha YZF R6	1'46.635	<b>1'44.021</b>	<b>1'44.021</b>	2.095	0.219	147,986	33
17	<b>32 S. MORAIS</b>	POR	Wojcik Racing Team	Yamaha YZF R6	1'45.221	<b>1'44.410</b>	<b>1'44.410</b>	2.484	0.389	147,434	40
18	<b>24 L. TACCINI</b>	ITA	Ten Kate Racing Yamaha	Yamaha YZF R6	1'47.655	<b>1'45.583</b>	<b>1'45.583</b>	3.657	1.173	145,796	34
19	<b>64 J. BUIS</b>	NED	G.A.P. MOTOZOO Racing by Puccetti	Kawasaki ZX-6R	1'51.450	<b>1'48.123</b>	<b>1'48.123</b>	6.197	2.540	142,371	36
20	<b>57 M. PETRATTI</b>	ARG	Yamaha MS Racing	Yamaha YZF R6	1'50.359	<b>1'48.679</b>	<b>1'48.679</b>	6.753	0.556	141,643	20

15/10/2021

These data/results cannot be reproduced, stored and/or transmitted in whole or in part by any manner of electronic, mechanical, photocopying, recording, broadcasting or otherwise now known or herein after developed without the previous express consent by the copyright owner, except for reproduction in daily press and regular printed publications on sale to the public within 60 days of the event related to those data/results and always provided that copyright symbol appears together as follows below.

© DORNA WSBK ORGANIZATION Srl 2021

FICR PERUGIA TIMING



Official Tyre Supplier



Official Timekeeper

## Motul Argentinean Round, 15-17 October 2021

### Best Sectors & Speed Free Practice 2nd Session

San Juan Villicum Circuit 4.276 m

#### BEST LAP

1	16 J. CLUZEL	Yamaha YZF R6	1'41.926
2	81 M. GONZALEZ	Yamaha YZF R6	1'42.721
3	77 D. AEGERTER	Yamaha YZF R6	1'42.833
4	56 P. SEBESTYEN	Yamaha YZF R6	1'42.941
5	66 N. TUULI	MV Agusta F3 675	1'42.996
6	28 G. VAN STRAALEN	Yamaha YZF R6	1'43.085
7	3 R. DE ROSA	Kawasaki ZX-6R	1'43.097
8	4 S. ODENDAAL	Yamaha YZF R6	1'43.124
9	61 C. ONCU	Kawasaki ZX-6R	1'43.162
10	38 H. SOOMER	Yamaha YZF R6	1'43.180
11	53 V. DEBISE	Yamaha YZF R6	1'43.241
12	25 M. BRENNER	Yamaha YZF R6	1'43.407
13	95 V. TAKALA	Yamaha YZF R6	1'43.465
14	40 U. ORRADRE	Yamaha YZF R6	1'43.533
15	5 P. OETTL	Kawasaki ZX-6R	1'43.802
16	74 A. GONZALES	Yamaha YZF R6	1'44.021
17	32 S. MORAIS	Yamaha YZF R6	1'44.410
18	24 L. TACCINI	Yamaha YZF R6	1'45.583
19	64 J. BUIS	Kawasaki ZX-6R	1'48.123
20	57 M. PETRATTI	Yamaha YZF R6	1'48.679

#### SPEED

1	81 M. GONZALEZ	Yamaha YZF R6	275.0
2	5 P. OETTL	Kawasaki ZX-6R	272.9
3	4 S. ODENDAAL	Yamaha YZF R6	271.6
4	56 P. SEBESTYEN	Yamaha YZF R6	270.9
5	38 H. SOOMER	Yamaha YZF R6	270.2
6	40 U. ORRADRE	Yamaha YZF R6	269.6
7	77 D. AEGERTER	Yamaha YZF R6	269.6
8	95 V. TAKALA	Yamaha YZF R6	268.9
9	16 J. CLUZEL	Yamaha YZF R6	268.9
10	3 R. DE ROSA	Kawasaki ZX-6R	267.6
11	28 G. VAN STRAALEN	Yamaha YZF R6	267.6
12	24 L. TACCINI	Yamaha YZF R6	266.9
13	64 J. BUIS	Kawasaki ZX-6R	266.2
14	32 S. MORAIS	Yamaha YZF R6	265.6
15	25 M. BRENNER	Yamaha YZF R6	265.6
16	61 C. ONCU	Kawasaki ZX-6R	265.6
17	53 V. DEBISE	Yamaha YZF R6	264.9
18	74 A. GONZALES	Yamaha YZF R6	264.9
19	57 M. PETRATTI	Yamaha YZF R6	260.5
20	66 N. TUULI	MV Agusta F3 675	259.9

#### SEG. 1

1	16 J. CLUZEL	21.877
2	81 M. GONZALEZ	21.976
3	66 N. TUULI	22.085
4	77 D. AEGERTER	22.088
5	61 C. ONCU	22.121
6	38 H. SOOMER	22.167
7	53 V. DEBISE	22.189
8	56 P. SEBESTYEN	22.195
9	4 S. ODENDAAL	22.204
10	95 V. TAKALA	22.225
11	5 P. OETTL	22.257
12	3 R. DE ROSA	22.309
13	25 M. BRENNER	22.316
14	28 G. VAN STRAALEN	22.349
15	74 A. GONZALES	22.350
16	40 U. ORRADRE	22.389
17	32 S. MORAIS	22.419
18	24 L. TACCINI	22.849
19	64 J. BUIS	23.310
20	57 M. PETRATTI	23.334

#### SEG. 2

1	4 S. ODENDAAL	26.949
2	16 J. CLUZEL	27.070
3	81 M. GONZALEZ	27.128
4	77 D. AEGERTER	27.225
5	56 P. SEBESTYEN	27.258
6	5 P. OETTL	27.266
7	3 R. DE ROSA	27.302
8	95 V. TAKALA	27.347
9	38 H. SOOMER	27.363
10	53 V. DEBISE	27.371
11	25 M. BRENNER	27.400
12	66 N. TUULI	27.402
13	28 G. VAN STRAALEN	27.412
14	61 C. ONCU	27.454
15	74 A. GONZALES	27.456
16	40 U. ORRADRE	27.486
17	24 L. TACCINI	27.662
18	32 S. MORAIS	27.707
19	64 J. BUIS	28.086
20	57 M. PETRATTI	28.393

#### SEG. 3

1	16 J. CLUZEL	25.959
2	77 D. AEGERTER	26.286
3	28 G. VAN STRAALEN	26.310
4	3 R. DE ROSA	26.323
5	53 V. DEBISE	26.383
6	81 M. GONZALEZ	26.389
7	61 C. ONCU	26.390
8	56 P. SEBESTYEN	26.400
9	40 U. ORRADRE	26.404
10	66 N. TUULI	26.410
11	38 H. SOOMER	26.413
12	25 M. BRENNER	26.511
13	95 V. TAKALA	26.536
14	4 S. ODENDAAL	26.631
15	32 S. MORAIS	26.767
16	5 P. OETTL	26.778
17	74 A. GONZALES	26.780
18	24 L. TACCINI	27.343
19	64 J. BUIS	27.856
20	57 M. PETRATTI	28.113

#### SEG. 4

1	16 J. CLUZEL	26.749
2	77 D. AEGERTER	26.905
3	81 M. GONZALEZ	26.907
4	61 C. ONCU	26.988
5	25 M. BRENNER	26.996
6	28 G. VAN STRAALEN	27.014
7	3 R. DE ROSA	27.025
8	56 P. SEBESTYEN	27.027
9	66 N. TUULI	27.041
10	53 V. DEBISE	27.043
11	5 P. OETTL	27.067
12	38 H. SOOMER	27.067
13	4 S. ODENDAAL	27.094
14	40 U. ORRADRE	27.144
15	95 V. TAKALA	27.211
16	74 A. GONZALES	27.307
17	32 S. MORAIS	27.380
18	24 L. TACCINI	27.511
19	57 M. PETRATTI	28.176
20	64 J. BUIS	28.302

15/10/2021

These data/results cannot be reproduced, stored and/or transmitted in whole or in part by any manner of electronic, mechanical, photocopying, recording, broadcasting or otherwise now known or herein after developed without the previous express consent by the copyright owner, except for reproduction in daily press and regular printed publications on sale to the public within 60 days of the event related to those data/results and always provided that copyright symbol appears together as follows below.

© DORNA WSBK ORGANIZATION Srl 2021

FICR PERUGIA TIMING



Official Tyre Supplier



Official Timekeeper

## Motul Argentinean Round, 15-17 October 2021

### Ideal Times Free Practice 2nd Session

San Juan Villicum Circuit 4.276 m

No.	Rider	Nat	Bike	Seg. 1	Seg. 2	Seg. 3	Seg. 4	Ideal Time		
				Diff. 1	Diff. 2	Diff. 3	Diff. 4	Best Lap	Pos.	Diff.
1	<b>16 J. CLUZEL</b>	FRA	Yamaha YZF R6	<b>21.877</b>	27.070 +0.179	<b>25.959</b>	<b>26.749</b> +0.092	<b>1'41.655</b> 1'41.926	1	0.271
2	<b>81 M. GONZALEZ</b>	ESP	Yamaha YZF R6	21.976 +0.039	27.128 +0.172	26.389	26.907 +0.110	<b>1'42.400</b> 1'42.721	2	0.321
3	<b>77 D. AEGERTER</b>	SUI	Yamaha YZF R6	22.088 +0.147	27.225 +0.182	26.286	26.905	<b>1'42.504</b> 1'42.833	3	0.329
4	<b>4 S. ODENDAAL</b>	RSA	Yamaha YZF R6	22.204	<b>26.949</b> +0.057	26.631 +0.129	27.094 +0.060	<b>1'42.878</b> 1'43.124	8	0.246
5	<b>56 P. SEBESTYEN</b>	HUN	Yamaha YZF R6	22.195 +0.061	27.258	26.400	27.027	<b>1'42.880</b> 1'42.941	4	0.061
6	<b>66 N. TUULI</b>	FIN	MV Agusta F3 675	22.085 +0.058	27.402	26.410	27.041	<b>1'42.938</b> 1'42.996	5	0.058
7	<b>61 C. ONCU</b>	TUR	Kawasaki ZX-6R	22.121 +0.047	27.454 +0.083	26.390	26.988 +0.079	<b>1'42.953</b> 1'43.162	9	0.209
8	<b>3 R. DE ROSA</b>	ITA	Kawasaki ZX-6R	22.309 +0.044	27.302 +0.009	26.323 +0.049	27.025 +0.036	<b>1'42.959</b> 1'43.097	7	0.138
9	<b>53 V. DEBISE</b>	FRA	Yamaha YZF R6	22.189 +0.074	27.371	26.383 +0.122	27.043 +0.059	<b>1'42.986</b> 1'43.241	11	0.255
10	<b>38 H. SOOMER</b>	EST	Yamaha YZF R6	22.167	27.363 +0.016	26.413 +0.075	27.067 +0.079	<b>1'43.010</b> 1'43.180	10	0.170
11	<b>28 G. VAN STRAALEN</b>	NED	Yamaha YZF R6	22.349	27.412	26.310	27.014	<b>1'43.085</b> 1'43.085	6	
12	<b>25 M. BRENNER</b>	SUI	Yamaha YZF R6	22.316	27.400 +0.022	26.511 +0.162	26.996	<b>1'43.223</b> 1'43.407	12	0.184
13	<b>95 V. TAKALA</b>	FIN	Yamaha YZF R6	22.225 +0.080	27.347 +0.038	26.536 +0.028	27.211	<b>1'43.319</b> 1'43.465	13	0.146
14	<b>5 P. OETTL</b>	GER	Kawasaki ZX-6R	22.257 +0.213	27.266 +0.092	26.778 +0.087	27.067 +0.042	<b>1'43.368</b> 1'43.802	15	0.434
15	<b>40 U. ORRADRE</b>	ESP	Yamaha YZF R6	22.389	27.486 +0.050	26.404 +0.060	27.144	<b>1'43.423</b> 1'43.533	14	0.110
16	<b>74 A. GONZALES</b>	ARG	Yamaha YZF R6	22.350	27.456 +0.122	26.780	27.307 +0.006	<b>1'43.893</b> 1'44.021	16	0.128
17	<b>32 S. MORAIS</b>	POR	Yamaha YZF R6	22.419	27.707 +0.079	26.767 +0.058	27.380	<b>1'44.273</b> 1'44.410	17	0.137
18	<b>24 L. TACCINI</b>	ITA	Yamaha YZF R6	22.849	27.662 +0.068	27.343 +0.150	27.511	<b>1'45.365</b> 1'45.583	18	0.218
19	<b>64 J. BUIS</b>	NED	Kawasaki ZX-6R	23.310 +0.338	28.086	27.856	28.302 +0.231	<b>1'47.554</b> 1'48.123	19	0.569
20	<b>57 M. PETRATTI</b>	ARG	Yamaha YZF R6	23.334 +0.344	28.393 +0.086	28.113 +0.233	28.176	<b>1'48.016</b> 1'48.679	20	0.663
<b>Overall Ideal Time</b>				21.877	26.949	25.959	26.749	<b>1'41.534</b>		

15/10/2021

These data/results cannot be reproduced, stored and/or transmitted in whole or in part by any manner of electronic, mechanical, photocopying, recording, broadcasting or otherwise now known or herein after developed without the previous express consent by the copyright owner, except for reproduction in daily press and regular printed publications on sale to the public within 60 days of the event related to those data/results and always provided that copyright symbol appears together as follows below.

© DORNA WSBK ORGANIZATION Srl 2021

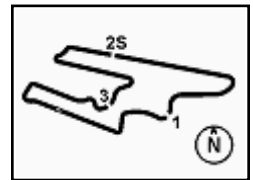
FICR PERUGIA TIMING



Official Tyre Supplier



Official Timekeeper



## Motul Argentinean Round, 15-17 October 2021

### Chronological Analysis Free Practice 2nd Session

San Juan Villicum Circuit 4.276 m

1 / 4

1° 16 J. CLUZEL (1'41.926)							
Lap	Seg.1	Seg.2	Seg.3	Seg.4	Lap Time	km/h	Local Time
1		28.593	27.640	27.854		258,6	16:03'07.071
2	23.076	27.752	26.911	27.461	1'45.200	265,6	16:04'52.271
3	22.531	27.415	26.977	27.331	1'44.254	265,6	16:06'36.525
4	22.329	27.375	27.685	28.622	1'46.011	266,9	16:08'22.536
5	22.576	27.386	26.470	27.153	1'43.585	<b>268,9</b>	16:10'06.121
6	22.386	27.364	26.694	26.999	1'43.443	268,2	16:11'49.564
7	22.274	27.273	26.385	27.065	1'42.997	266,2	16:13'32.561
8	22.281	27.405	26.679	27.047	1'43.412	266,2	16:15'15.973
9	22.201	27.388	26.642	27.073	1'43.304	266,9	16:16'59.277
10	22.266	27.299	26.465	26.897	1'42.927	267,6	16:18'42.204
11	22.228	27.320	26.276	27.160	1'42.984	266,9	16:20'25.188
12	22.382	27.598	26.608	39.929	1'56.517CP	266,2	16:22'21.705
13	6'58.653	29.898	31.997	29.354	8'29.902P	231,5	16:30'51.607
14	22.271	27.426	28.715	29.775	1'48.187	263,7	16:32'39.794
15	22.216	27.165	26.079	26.864	1'42.324	265,6	16:34'22.118
16	21.974	27.199	26.053	26.828	1'42.054	266,2	16:36'04.172
17	<b>21.877</b>	27.249	<b>25.959</b>	26.841	<b>1'41.926</b>	268,2	16:37'46.098
18	22.205	27.374	27.158	27.389	1'44.126	264,9	16:39'30.224
19	22.091	27.267	26.292	<b>26.749</b>	1'42.399	267,6	16:41'12.623
20	22.029	<b>27.070</b>	32.430	27.457	1'48.986	267,6	16:43'01.609
21	22.085	27.168	26.079	26.911	1'42.243	267,6	16:44'43.852
22	22.054	27.147	26.402	27.016	1'42.619	<b>268,9</b>	16:46'26.471

12	<b>22.088</b>	27.446	26.405	26.977	1'42.916	266,2	16:21'28.366
13	22.165	27.381	26.575	27.099	1'43.220	264,9	16:23'11.586
14	22.235	27.407	<b>26.286</b>	<b>26.905</b>	<b>1'42.833</b>	264,9	16:24'54.419
15	22.273	28.032	26.483	27.061	1'43.849	264,3	16:26'38.268
16	22.277	27.406	26.494	39.461	1'55.638P	264,3	16:28'33.906
17	8'26.109	28.291	26.702	27.386	9'48.488P	263,0	16:38'22.394
18	22.337	27.394	26.368	26.989	1'43.088	266,2	16:40'05.482
19	22.360	27.450	26.355	27.205	1'43.370	266,2	16:41'48.852
20	22.283	27.367	26.563	27.112	1'43.325	266,9	16:43'32.177
21	22.258	27.366	26.348	27.111	1'43.083	268,9	16:45'15.260

2° 81 M. GONZALEZ (1'42.721)							
Lap	Seg.1	Seg.2	Seg.3	Seg.4	Lap Time	km/h	Local Time
1		28.839	27.842	27.927		258,6	16:02'18.128
2	22.526	27.553	27.058	29.382	1'46.519	268,2	16:04'04.647
3	22.531	27.201	26.777	27.620	1'44.129	269,6	16:05'48.776
4	22.338	27.321	26.401	27.161	1'43.221	270,2	16:07'31.997
5	22.191	<b>27.128</b>	26.558	27.413	1'43.290	<b>275,0</b>	16:09'15.287
6	23.007	27.527	30.432	40.211	2'01.177P	259,2	16:11'16.464
7	8'04.268	28.128	27.546	29.179	9'29.121P	264,9	16:20'45.585
8	22.388	27.602	26.646	27.179	1'43.815	262,4	16:22'29.400
9	22.198	27.256	26.551	27.099	1'43.104	266,2	16:24'12.504
10	22.121	27.283	26.401	27.041	1'42.846C	264,9	16:25'55.350
11	<b>21.976</b>	27.997	26.491	27.164	1'43.628	263,0	16:27'38.978
12	22.095	27.222	26.559	27.053	1'42.929	262,4	16:29'21.907
13	22.289	27.297	26.460	<b>26.907</b>	1'42.953	261,7	16:31'04.860
14	22.144	27.260	26.510	27.020	1'42.934	263,7	16:32'47.794
15	22.077	27.392	26.794	26.994	1'43.257C	269,6	16:34'31.051
16	22.015	27.300	<b>26.389</b>	27.017	<b>1'42.721</b>	263,7	16:36'13.772
17	22.121	27.273	32.735	27.716	1'49.845	266,2	16:38'03.617
18	22.127	27.346	26.454	27.644	1'43.571	264,9	16:39'47.188
19	22.214	27.395	26.654	27.117	1'43.380	263,7	16:41'30.568
20	22.191	27.376	26.649	27.067	1'43.283	263,7	16:43'13.851
21	22.173	27.382	26.546	27.072	1'43.173	264,3	16:44'57.024
22	22.155	27.318	26.458	26.967	1'42.898	263,7	16:46'39.922

4° 56 P. SEBESTYEN (1'42.941)							
Lap	Seg.1	Seg.2	Seg.3	Seg.4	Lap Time	km/h	Local Time
1		28.476	27.252	27.812		258,6	16:02'08.222
2	24.962	29.138	30.765	28.211	1'53.076	264,3	16:04'01.298
3	22.560	27.395	27.012	27.514	1'44.481	267,6	16:05'45.779
4	22.644	27.752	27.034	27.418	1'44.848	267,6	16:07'30.627
5	22.547	27.335	27.112	27.455	1'44.449	<b>270,9</b>	16:09'15.076
6	22.678	27.592	26.893	27.345	1'44.508	270,2	16:10'59.584
7	22.454	27.513	27.475	27.434	1'44.876	264,9	16:12'44.460
8	22.508	27.571	26.782	27.430	1'44.291	263,7	16:14'28.751
9	27.609	29.147	31.807	28.157	1'56.720	236,6	16:16'25.471
10	22.604	27.426	26.474	27.258	1'43.762	264,9	16:18'09.233
11	22.458	27.743	27.046	41.886	1'59.133P	264,3	16:20'08.366
12	10'44.352	28.101	28.701	27.501	12'08.655P	261,1	16:32'17.021
13	22.328	27.324	26.564	27.156	1'43.372	263,0	16:34'00.393
14	26.827	27.444	26.438	27.558	1'48.267	266,9	16:35'48.660
15	<b>22.195</b>	27.267	26.544	27.045	1'43.051	266,2	16:37'31.711
16	22.275	27.358	30.937	28.117	1'48.687	266,2	16:39'20.398
17	22.228	27.282	26.570	27.240	1'43.320	265,6	16:41'03.718
18	28.239	32.807	27.935	27.288	1'56.269	264,9	16:42'59.987
19	22.256	<b>27.258</b>	<b>26.400</b>	<b>27.027</b>	<b>1'42.941</b>	266,9	16:44'42.928
20	22.233	27.272	26.660	27.208	1'43.373	265,6	16:46'26.301

3° 77 D. AEGERTER (1'42.833)							
Lap	Seg.1	Seg.2	Seg.3	Seg.4	Lap Time	km/h	Local Time
1		29.741	28.422	27.887		253,8	16:02'25.366
2	22.519	27.381	26.624	27.113	1'43.637	268,2	16:04'09.003
3	22.468	<b>27.225</b>	26.428	26.964	1'43.085	268,2	16:05'52.088
4	22.303	27.493	26.892	27.316	1'44.004	266,2	16:07'36.092
5	22.496	27.380	26.492	27.281	1'43.649	268,9	16:09'19.741
6	22.286	27.291	26.333	27.440	1'43.350	<b>269,6</b>	16:11'03.091
7	22.249	27.419	26.433	28.487	1'44.588	267,6	16:12'47.679
8	22.505	27.370	26.394	26.945	1'43.214	264,9	16:14'30.893
9	25.053	29.091	26.818	27.357	1'48.319	257,4	16:16'19.212
10	22.238	27.457	26.355	27.193	1'43.243	264,3	16:18'02.455
11	22.166	27.398	26.370	27.061	1'42.995	264,9	16:19'45.450

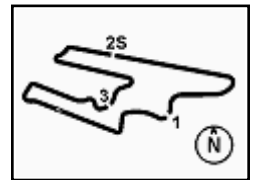
5° 66 N. TUULI (1'42.996)							
Lap	Seg.1	Seg.2	Seg.3	Seg.4	Lap Time	km/h	Local Time
1		29.047	28.648	41.991		256,8	16:05'54.075
2	4'30.763	28.976	29.418	27.699	5'56.856P	255,6	16:11'50.931
3	22.427	27.642	26.916	27.513	1'44.498	257,4	16:13'35.429
4	22.335	27.661	26.767	27.347	1'44.110	257,4	16:15'19.539
5	22.340	27.592	26.734	27.195	1'43.861	257,4	16:17'03.400
6	22.279	27.448	26.534	27.085	1'43.346	258,6	16:18'46.746
7	22.243	30.174	28.212	41.033	2'01.662P	219,4	16:20'48.408
8	4'25.745	28.117	27.664	27.480	5'49.006P	253,8	16:26'37.414
9	22.959	27.719	27.098	40.795	1'58.571P	257,4	16:28'35.985
10	4'04.740	28.187	27.494	27.597	5'28.018P	256,2	16:34'04.003
11	22.250	27.603	26.724	27.309	1'43.886	257,4	16:35'47.889
12	22.143	<b>27.402</b>	<b>26.410</b>	<b>27.041</b>	<b>1'42.996</b>	<b>259,9</b>	16:37'30.885
13	<b>22.085</b>	27.697	26.491	27.165	1'43.438C	257,4	16:39'14.323
14	22.315	27.487	30.422	30.947	1'51.171	258,0	16:41'05.494
15	22.436	27.638	26.959	27.568	1'44.601	257,4	16:42'50.095
16	22.551	27.517	26.843	27.223	1'44.134	258,0	16:44'34.229
17	22.336	27.622	26.694	27.263	1'43.915	256,2	16:46'18.144

6° 28 G. VAN STRAALLEN (1'43.085)							
Lap	Seg.1	Seg.2	Seg.3	Seg.4	Lap Time	km/h	Local Time
1		29.166	28.497	28.336		245,7	16:02'19.214
2	22.917	28.125	27.496	27.576	1'46.114	262,4	16:04'05.328
3	22.948	28.021	27.361	27.909	1'46.239	263,7	16:05'51.567
4	22.639	27.717	27.255	27.362	1'44.973	258,6	16:07'36.540
5	22.737	27.680	26.871	27.372	1'44.660	<b>267,6</b>	16:09'21.200
6	22.531	27.527	27.030	27.214	1'44.302	265,6	16:11'05.502
7	22.581	27.721	26.931	40.181	1'57.414P	262,4	16:13'02.916

15/10/2021 P = Pits In/Out - C = Lap Time Cancelled

These data/results cannot be reproduced, stored and/or transmitted in whole or in part by any manner of electronic, mechanical, photocopying, recording, broadcasting or otherwise now known or herein after developed without the previous express consent by the copyright owner, except for reproduction in daily press and regular printed publications on sale to the public within 60 days of the event related to those data/results and always provided that copyright symbol appears together as follows below.

© DORNA WSBK ORGANIZATION Srl 2021



## Motul Argentinean Round, 15-17 October 2021

### Chronological Analysis Free Practice 2nd Session

San Juan Villicum Circuit 4.276 m

2 / 4

8	8'07.768	28.303	27.347	27.523	9'30.941P	258,0	16:22'33.857	3	22.387	27.641	26.651	27.227	1'43.906	263,0	16:05'33.297
9	22.617	27.633	26.762	27.358	1'44.370	263,7	16:24'18.227	4	22.271	27.546	26.485	27.205	1'43.507	260,5	16:07'16.804
10	26.215	27.883	26.872	27.404	1'48.374	259,2	16:26'06.601	5	22.168	27.537	<b>26.390</b>	27.067	<b>1'43.162</b>	264,9	16:08'59.966
11	22.601	27.864	26.787	27.390	1'44.642	258,6	16:27'51.243	6	22.312	27.534	26.410	27.204	1'43.460	264,3	16:10'43.426
12	22.674	27.842	26.891	27.253	1'44.660	257,4	16:29'35.903	7	22.319	27.654	26.455	27.144	1'43.572	262,4	16:12'26.998
13	22.561	27.755	27.003	27.406	1'44.725	259,9	16:31'20.628	8	22.398	27.515	26.394	27.049	1'43.356	261,1	16:14'10.354
14	22.690	28.077	27.091	40.744	1'58.602P	258,6	16:33'19.230	9	22.457	27.704	26.566	27.219	1'43.946	261,1	16:15'54.300
15	3'54.444	28.443	27.427	28.177	5'18.491P	258,6	16:38'37.721	10	22.243	27.549	26.495	27.503	1'43.790C	262,4	16:17'38.090
16	22.495	27.568	26.780	27.220	1'44.063	261,7	16:40'21.784	11	22.262	27.666	26.485	27.151	1'43.564	262,4	16:19'21.654
17	22.370	27.573	26.571	27.104	1'43.618	261,1	16:42'05.402	12	22.392	27.526	26.495	27.170	1'43.583	261,7	16:21'05.237
18	22.387	27.569	26.804	27.025	1'43.785	261,1	16:43'49.187	13	22.302	27.609	26.978	27.127	1'44.016	262,4	16:22'49.253
19	<b>22.349</b>	<b>27.412</b>	<b>26.310</b>	<b>27.014</b>	<b>1'43.085</b>	261,7	16:45'32.272	14	22.248	27.549	26.617	27.334	1'43.748	263,0	16:24'33.001
								15	22.273	27.683	26.801	27.143	1'43.900	261,7	16:26'16.901
								16	28.051	28.023	29.146	41.194	2'06.414P	<b>265,6</b>	16:28'23.315
								17	9'52.080	28.043	26.603	27.047	1'11'3.773P	262,4	16:39'37.088
								18	22.257	<b>27.454</b>	26.521	27.035	1'43.267	<b>265,6</b>	16:41'20.355
								19	<b>22.121</b>	27.524	26.579	27.024	1'43.248	263,0	16:43'03.603
								20	22.170	27.482	26.515	27.008	1'43.175	264,3	16:44'46.778
								21	22.175	27.537	26.476	<b>26.988</b>	1'43.176	263,0	16:46'29.954

#### 7° 3 R. DE ROSA (1'43.097)

Lap	Seg.1	Seg.2	Seg.3	Seg.4	Lap Time	km/h	Local Time
1		29.196	27.911	28.042		256,8	16:03'13.574
2	22.797	28.111	27.354	27.738	1'46.000	263,7	16:04'59.574
3	22.689	27.653	27.127	27.641	1'45.110	262,4	16:06'44.684
4	22.682	27.400	26.765	27.482	1'44.329	263,7	16:08'29.013
5	22.522	27.441	26.763	27.281	1'44.007	266,9	16:10'13.020
6	22.357	27.474	26.674	27.330	1'43.835	264,9	16:11'56.855
7	23.912	28.731	28.188	42.723	2'03.554P	261,1	16:14'00.409
8	5'09.962	33.085	28.977	32.735	6'44.759P	244,1	16:20'45.168
9	22.688	29.392	28.382	27.809	1'48.271	255,6	16:22'33.439
10	22.634	27.472	26.705	27.300	1'44.111	265,6	16:24'17.550
11	<b>22.309</b>	27.339	26.517	27.406	1'43.571	264,9	16:26'01.121
12	22.558	27.409	26.628	27.252	1'43.847	264,9	16:27'44.968
13	23.409	29.087	27.343	27.663	1'47.502	259,2	16:29'32.470
14	22.750	27.436	26.602	<b>27.025</b>	1'43.813	262,4	16:31'16.283
15	22.423	27.375	26.481	27.188	1'43.467	262,4	16:32'59.750
16	24.577	28.833	27.742	27.561	1'48.713	261,7	16:34'48.463
17	<b>22.309</b>	27.363	26.434	27.262	1'43.368	264,3	16:36'31.831
18	22.469	27.339	<b>26.323</b>	27.114	1'43.245	265,6	16:38'15.076
19	22.409	27.417	31.721	29.463	1'51.010	265,6	16:40'06.086
20	22.450	27.440	26.620	27.226	1'43.736	266,2	16:41'49.822
21	22.353	27.311	26.372	27.061	<b>1'43.097</b>	265,6	16:43'32.919
22	22.372	<b>27.302</b>	26.479	27.090	1'43.243	<b>267,6</b>	16:45'16.162

#### 10° 38 H. SOOMER (1'43.180)

Lap	Seg.1	Seg.2	Seg.3	Seg.4	Lap Time	km/h	Local Time
1		28.465	27.670	28.604		259,2	16:02'13.332
2	23.069	27.823	27.711	27.838	1'46.441	265,6	16:03'59.773
3	22.571	27.595	27.357	27.554	1'45.077	<b>270,2</b>	16:05'44.850
4	22.565	27.481	26.795	27.628	1'44.469	266,2	16:07'29.319
5	22.570	<b>27.363</b>	26.956	27.530	1'44.419	268,2	16:09'13.738
6	22.781	30.498	27.228	39.806	2'00.313P	267,6	16:11'14.051
7	8'08.974	27.991	27.642	27.806	9'32.413P	261,1	16:20'46.464
8	22.935	27.824	27.080	27.608	1'45.447	263,0	16:22'31.911
9	22.489	27.607	26.726	27.551	1'44.373	263,7	16:24'16.284
10	22.269	27.616	26.809	27.789	1'44.483	261,1	16:26'00.767
11	22.544	27.817	26.979	27.494	1'44.834	252,6	16:27'45.601
12	23.444	28.545	27.453	27.775	1'47.217	254,4	16:29'32.818
13	22.646	27.561	26.783	40.347	1'57.337P	264,3	16:31'30.155
14	4'51.265	28.091	27.058	27.655	6'14.069P	262,4	16:37'44.224
15	22.253	27.385	26.624	27.218	1'43.480	263,0	16:39'27.704
16	22.376	27.390	29.153	27.215	1'46.134	263,0	16:41'13.838
17	22.352	27.428	27.660	27.277	1'44.717	264,3	16:42'58.555
18	<b>22.167</b>	27.379	26.488	27.146	<b>1'43.180</b>	262,4	16:44'41.735
19	22.317	27.416	<b>26.413</b>	<b>27.067</b>	1'43.213	263,0	16:46'24.948

#### 8° 4 S. ODENDAAL (1'43.124)

Lap	Seg.1	Seg.2	Seg.3	Seg.4	Lap Time	km/h	Local Time
1		28.444	27.816	28.368		259,9	16:02'12.795
2	23.000	27.737	27.056	27.653	1'45.446	266,9	16:03'58.241
3	22.773	27.220	27.125	27.779	1'44.897	269,6	16:05'43.138
4	22.827	27.106	26.771	27.411	1'44.115	266,9	16:07'27.253
5	22.424	27.075	26.781	27.235	1'43.515	269,6	16:09'10.768
6	22.464	27.167	<b>26.631</b>	27.290	1'43.552	269,6	16:10'54.320
7	22.510	27.260	26.978	27.148	1'43.896	267,6	16:12'38.216
8	24.877	27.974	27.765	41.087	2'01.703P	264,9	16:14'39.919
9	10'16.879	28.989	27.157	27.383	1'40.408P	255,0	16:26'20.327
10	22.542	27.255	28.613	27.503	1'45.913	264,9	16:28'06.240
11	22.596	27.275	26.836	27.216	1'43.923	265,6	16:29'50.163
12	22.525	27.267	26.764	27.524	1'44.080	266,9	16:31'34.243
13	23.063	27.497	26.946	40.179	1'57.685P	264,9	16:33'31.928
14	3'45.140	28.208	27.050	27.462	5'07.860P	264,3	16:38'39.788
15	<b>22.204</b>	27.006	26.760	27.154	<b>1'43.124</b>	<b>271,6</b>	16:40'22.912
16	22.607	27.214	27.000	27.203	1'44.024	268,2	16:42'06.936
17	22.500	27.094	26.731	27.278	1'43.603	269,6	16:43'50.539
18	22.280	<b>26.949</b>	27.110	<b>27.094</b>	1'43.433	268,9	16:45'33.972

#### 9° 61 C. ONCU (1'43.162)

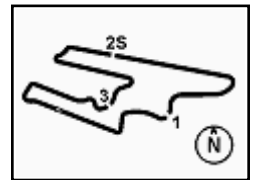
Lap	Seg.1	Seg.2	Seg.3	Seg.4	Lap Time	km/h	Local Time
1		27.881	27.428	27.311		258,6	16:02'05.273
2	22.321	27.609	26.654	27.534	1'44.118	261,1	16:03'49.391

#### 11° 53 V. DEBISE (1'43.241)

Lap	Seg.1	Seg.2	Seg.3	Seg.4	Lap Time	km/h	Local Time
1		28.570	27.706	30.357		259,9	16:02'14.062
2	22.792	27.985	28.659	32.106	1'51.542	263,0	16:04'05.604
3	22.873	27.748	27.209	27.668	1'45.498	<b>264,9</b>	16:05'51.102
4	22.635	27.560	26.806	27.762	1'44.763	<b>264,9</b>	16:07'35.865
5	22.601	27.598	26.883	39.397	1'56.479P	262,4	16:09'32.344
6	2'57.230	28.101	27.155	27.905	4'20.391P	259,9	16:13'52.735
7	22.576	27.722	26.880	27.614	1'44.792	260,5	16:15'37.527
8	22.669	27.825	26.840	27.705	1'45.039	262,4	16:17'22.566
9	22.513	27.803	26.679	27.230	1'44.225	262,4	16:19'06.791
10	22.469	27.579	30.814	40.295	2'01.157P	263,7	16:21'07.948
11	7'57.502	35.750	30.229	40.506	9'43.987P	227,2	16:30'51.935
12	22.405	27.424	26.605	27.351	1'43.785	261,1	16:32'35.720
13	24.497	29.587	26.526	<b>27.043</b>	1'47.653	263,0	16:34'23.373
14	22.270	27.469	<b>26.383</b>	27.330	1'43.452	263,0	16:36'06.825
15	<b>22.189</b>	27.450	26.435	27.659	1'43.733	264,3	16:37'50.558
16	22.458	27.522	26.588	27.513	1'44.081	263,0	16:39'34.639
17	22.494	27.617	28.874	28.564	1'47.549C	262,4	16:41'22.188
18	22.422	27.392	26.560	27.123	1'43.497	262,4	16:43'05.685
19	22.263	<b>27.371</b>	26.505	27.102	<b>1'43.241</b>	263,7	16:44'48.926

15/10/2021 P = Pits In/Out - C = Lap Time Cancelled

These data/results cannot be reproduced, stored and/or transmitted in whole or in part by any manner of electronic, mechanical, photocopying, recording, broadcasting or otherwise now known or herein after developed without the previous express consent by the copyright owner, except for reproduction in daily press and regular printed publications on sale to the public within 60 days of the event related to those data/results and always provided that copyright symbol appears together as follows below.



## Motul Argentinean Round, 15-17 October 2021

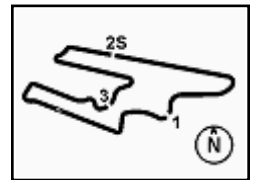
### Chronological Analysis Free Practice 2nd Session

San Juan Villicum Circuit 4.276 m

**3 / 4**

Lap	Seg.1	Seg.2	Seg.3	Seg.4	Lap Time	km/h	Local Time											
20	22.523	30.854	26.675	27.227	1'47.279	261,1	16:46'36.205	14	22.676	27.701	27.092	27.623	1'45.092	261,1	16:25'11.185			
15								15	24.132	28.681	27.392	41.454	2'01.659P	258,6	16:27'12.844			
16								16	7'42.103	27.931	26.945	27.471	9'04.450P	260,5	16:36'17.294			
17								17	22.555	27.685	26.516	27.207	1'43.963	262,4	16:38'01.257			
18								18	22.529	27.575	<b>26.404</b>	27.197	1'43.705	264,3	16:39'44.962			
19								19	22.525	27.559	29.247	27.264	1'46.595	263,0	16:41'31.557			
20								20	<b>22.389</b>	27.536	26.464	<b>27.144</b>	<b>1'43.533</b>	262,4	16:43'15.090			
21								21	22.436	27.518	27.052	27.352	1'44.358	264,3	16:44'59.448			
22								22	22.602	27.928	27.406	27.769	1'45.705	259,9	16:46'45.153			
<b>12° 25 M. BRENNER (1'43.407)</b>								<b>15° 5 P. OETTL (1'43.802)</b>										
Lap	Seg.1	Seg.2	Seg.3	Seg.4	Lap Time	km/h	Local Time	Lap	Seg.1	Seg.2	Seg.3	Seg.4	Lap Time	km/h	Local Time			
1		29.190	28.630	28.100		255,6	16:02'35.346	1			28.430	31.479	28.228		260,5	16:02'13.374		
2	22.752	27.800	26.904	27.444	1'44.900	261,1	16:04'20.246	2	23.249	27.653	28.180	28.303	1'47.385	264,3	16:04'00.759			
3	22.784	27.501	26.940	27.208	1'44.433	263,7	16:06'04.679	3	22.654	27.480	27.128	27.385	1'44.647	268,9	16:05'45.406			
4	22.719	27.405	28.983	28.156	1'47.263	263,7	16:07'51.942	4	22.841	27.492	27.112	27.593	1'45.038	<b>272,9</b>	16:07'30.444			
5	22.675	27.454	26.677	27.080	1'43.886	264,9	16:09'35.828	5	22.568	<b>27.266</b>	26.913	27.274	1'44.021	268,9	16:09'14.465			
6	22.559	27.518	26.643	27.184	1'43.904	<b>265,6</b>	16:11'19.732	6	22.895	27.677	27.476	27.336	1'45.384	267,6	16:10'59.849			
7	25.874	28.000	27.258	40.501	2'01.633P	261,7	16:13'21.365	7	22.507	27.417	28.260	27.497	1'45.681	268,2	16:12'45.530			
8	6'24.215	28.031	27.593	27.567	7'47.406P	261,1	16:21'08.771	8	22.449	27.396	27.063	27.365	1'44.273C	264,9	16:14'29.803			
9	22.431	27.445	26.530	27.054	1'43.460	261,1	16:22'52.231	9	27.147	29.902	29.228	42.427	2'08.704P	249,1	16:16'38.507			
10	<b>22.316</b>	27.422	26.673	<b>26.996</b>	<b>1'43.407</b>	263,0	16:24'35.638	10	6'34.922	29.102	26.983	27.258	7'58.265P	263,0	16:24'36.772			
11	22.395	<b>27.400</b>	26.611	27.141	1'43.547	261,7	16:26'19.185	11	22.488	27.470	26.922	27.249	1'44.129	264,9	16:26'20.901			
12	25.595	27.760	27.218	40.457	2'01.030P	259,9	16:28'20.215	12	22.430	27.411	29.235	27.481	1'46.557C	263,7	16:28'07.458			
13	3'49.169	28.702	27.388	27.562	5'12.821P	256,8	16:33'33.036	13	22.376	27.441	26.849	27.157	1'43.823	263,0	16:29'51.281			
14	22.421	27.628	<b>26.511</b>	27.120	1'43.680	259,9	16:35'16.716	14	22.315	27.465	26.809	27.259	1'43.848	264,3	16:31'35.129			
15	25.856	27.619	26.757	27.658	1'47.890	262,4	16:37'04.606	15	28.269	29.598	28.719	41.990	2'08.576P	253,2	16:33'43.705			
16	22.361	27.524	26.552	27.069	1'43.506	261,1	16:38'48.112	16	4'31.864	28.129	<b>26.778</b>	<b>27.067</b>	5'53.838P	266,2	16:39'37.543			
17	22.753	27.623	31.728	27.896	1'50.000	262,4	16:40'38.112	17	<b>22.257</b>	27.371	27.285	27.971	1'44.884	268,2	16:41'22.427			
18	22.529	27.602	26.863	27.350	1'44.344	261,1	16:42'22.456	18	22.470	27.358	26.865	27.109	<b>1'43.802</b>	266,9	16:43'06.229			
19	22.628	27.597	26.775	27.478	1'44.478	261,1	16:44'06.934	19	22.400	29.735	29.896	31.915	1'53.946	250,8	16:45'00.175			
20	23.061	28.310	27.796	27.996	1'47.163	261,7	16:45'54.097											
<b>13° 95 V. TAKALA (1'43.465)</b>								<b>16° 74 A. GONZALES (1'44.021)</b>										
Lap	Seg.1	Seg.2	Seg.3	Seg.4	Lap Time	km/h	Local Time	Lap	Seg.1	Seg.2	Seg.3	Seg.4	Lap Time	km/h	Local Time			
1		28.313	27.787	27.990		259,2	16:02'11.309	1			28.889	28.111	28.132		258,6	16:02'25.231		
2	22.969	27.594	27.419	28.185	1'46.167	262,4	16:03'57.476	2	22.950	27.573	27.525	27.993	1'46.041	263,0	16:04'11.272			
3	22.824	27.660	27.107	27.826	1'45.417	265,6	16:05'42.893	3	23.223	27.941	27.569	27.752	1'46.485	263,0	16:05'57.757			
4	22.641	27.578	27.250	27.565	1'45.034	261,1	16:07'27.927	4	23.080	27.529	27.631	28.118	1'46.358	264,3	16:07'44.115			
5	22.616	27.440	26.956	27.443	1'44.455	266,9	16:09'12.382	5	22.798	<b>27.456</b>	27.894	27.863	1'46.011	263,0	16:09'30.126			
6	22.591	27.620	32.546	27.816	1'50.573	266,9	16:11'02.955	6	23.498	27.837	27.491	27.570	1'46.396	<b>264,9</b>	16:11'16.522			
7	22.681	27.497	26.886	27.566	1'44.630	<b>268,9</b>	16:12'47.585	7	22.757	27.636	27.186	27.501	1'45.080	261,7	16:13'01.602			
8	22.776	27.348	28.142	41.130	1'59.396P	268,2	16:14'46.981	8	29.201	28.789	28.756	41.860	2'08.606P	260,5	16:15'10.208			
9	6'27.101	28.116	27.099	27.785	7'50.101P	261,1	16:22'37.082	9	5'44.498	29.039	29.823	27.970	7'11.330P	258,0	16:22'21.538			
10	22.296	27.434	26.753	27.465	1'43.948C	264,3	16:24'21.030	10	22.854	27.630	27.114	27.556	1'45.154	262,4	16:24'06.692			
11	<b>22.225</b>	27.595	26.667	27.497	1'43.984	262,4	16:26'05.014	11	22.670	27.660	27.152	<b>27.307</b>	1'44.789	260,5	16:25'51.481			
12	22.264	27.435	31.134	28.659	1'49.492	260,5	16:27'54.506	12	22.699	27.745	26.922	27.902	1'45.268	259,9	16:27'36.749			
13	22.824	27.701	26.733	27.270	1'44.528	260,5	16:29'39.034	13	25.775	28.137	27.965	41.150	2'03.027P	258,6	16:29'39.776			
14	22.305	27.385	26.564	<b>27.211</b>	<b>1'43.465</b>	262,4	16:31'22.499	14	7'01.967	28.216	27.481	27.605	8'25.269P	262,4	16:38'05.045			
15	22.484	<b>27.347</b>	26.696	27.660	1'44.187	263,0	16:33'06.686	15	<b>22.350</b>	27.578	<b>26.780</b>	27.313	<b>1'44.021</b>	263,7	16:39'49.066			
16	22.437	27.618	26.657	40.582	1'57.294P	263,7	16:35'03.980	16	22.625	27.703	27.357	27.716	1'45.401	262,4	16:41'34.467			
17	3'35.073	27.740	27.216	27.601	4'57.630P	263,7	16:40'01.610	17	22.691	27.830	27.348	27.999	1'45.868	261,1	16:43'20.335			
18	22.561	27.594	27.018	28.696	1'45.869	263,0	16:41'47.479	18	23.168	28.084	28.197	28.082	1'47.531	261,7	16:45'07.866			
19	22.272	27.453	<b>26.536</b>	27.402	1'43.663	263,7	16:43'31.142											
20	22.306	27.358	29.127	27.339	1'46.130	264,3	16:45'17.272											
<b>14° 40 U. ORRADRE (1'43.533)</b>								<b>17° 32 S. MORAIS (1'44.410)</b>										
Lap	Seg.1	Seg.2	Seg.3	Seg.4	Lap Time	km/h	Local Time	Lap	Seg.1	Seg.2	Seg.3	Seg.4	Lap Time	km/h	Local Time			
1		29.677	27.736	28.667		259,9	16:02'12.901	1			30.681	30.774	30.989		251,4	16:02'22.126		
2	23.273	27.856	27.641	27.690	1'46.460C	266,2	16:03'59.361	2	23.212	28.386	27.580	28.449	1'47.627	260,5	16:04'09.753			
3	22.708	27.792	27.802	27.658	1'45.960	266,2	16:05'45.321	3	22.904	27.924	27.380	27.893	1'46.101	264,3	16:05'55.854			
4	22.766	27.645	26.917	27.413	1'44.741	267,6	16:07'30.062	4	23.362	27.770	29.782	29.618	1'50.532	264,3	16:07'46.386			
5	22.754	<b>27.486</b>	27.233	27.404	1'44.877	264,9	16:09'14.939	5	22.655	27.754	27.991	28.591	1'46.991	<b>265,6</b>	16:09'33.377			
6	22.742	27.912	27.255	27.643	1'45.552	<b>269,6</b>	16:11'00.491	6	22.563	2								





## Motul Argentinean Round, 15-17 October 2021

### Chronological Analysis Free Practice 2nd Session

San Juan Villicum Circuit 4.276 m

4 / 4

9	22.519	27.802	27.172	27.453	1'44.946	259,2	16:16'35.565	2	25.413	28.519	28.400	28.183	1'50.515	<b>260,5</b>	16:04'11.796
10	22.964	29.096	28.396	43.238	2'03.694P	259,9	16:18'39.259	3	24.125	28.729	33.790	43.497	2'10.141P	259,9	16:06'21.937
11	5'57.865	31.258	27.943	29.533	7'26.599P	256,8	16:26'05.858	4	6'18.882	29.629	29.257	29.449	7'47.217P	253,8	16:14'09.154
12	23.759	28.406	27.157	29.619	1'48.941	257,4	16:27'54.799	5	23.504	29.470	30.399	29.071	1'52.444	256,8	16:16'01.598
13	22.852	27.921	26.848	27.494	1'45.115	261,7	16:29'39.914	6	23.459	29.501	28.830	28.494	1'50.284	256,8	16:17'51.882
14	22.498	27.764	<b>26.767</b>	27.715	1'44.744	261,1	16:31'24.658	7	<b>23.334</b>	28.461	28.496	28.796	1'49.087	257,4	16:19'40.969
15	<b>22.419</b>	27.786	26.825	<b>27.380</b>	<b>1'44.410</b>	259,9	16:33'09.068	8	24.036	28.888	31.293	29.326	1'53.543	256,8	16:21'34.512
16	22.475	27.777	26.777	27.517	1'44.546	261,1	16:34'53.614	9	23.506	28.472	<b>28.113</b>	45.803	2'05.894P	256,2	16:23'40.406
17	54.994	31.007	28.263	27.745	2'22.009	239,7	16:37'15.623	10	11'37.700	29.383	32.597	28.874	13'08.554P	257,4	16:36'48.960
18	22.546	<b>27.707</b>	26.986	27.572	1'44.811	261,7	16:39'00.434	11	23.479	<b>28.393</b>	32.813	28.866	1'53.551	257,4	16:38'42.511
19	22.520	27.802	26.794	27.655	1'44.771	262,4	16:40'45.205	12	30.532	28.813	32.474	31.359	2'03.178	259,9	16:40'45.689
20	22.559	27.862	27.000	27.572	1'44.993	261,1	16:42'30.198	13	25.538	29.087	29.397	28.728	1'52.750	256,2	16:42'38.439
21	22.445	27.731	26.830	27.760	1'44.766	262,4	16:44'14.964	14	23.678	28.479	28.346	<b>28.176</b>	<b>1'48.679</b>	259,9	16:44'27.118
22	24.259	28.621	29.163	42.358	2'04.401P	259,2	16:46'19.365	15	23.590	47.226	35.531	49.175	2'35.522P	81,1	16:47'02.640

#### 18° 24 L. TACCINI (1'45.583)

Lap	Seg.1	Seg.2	Seg.3	Seg.4	Lap Time	km/h	Local Time
1		29.350	30.422	28.661		257,4	16:02'19.817
2	23.683	28.121	28.440	28.109	1'48.353	264,3	16:04'08.170
3	23.482	27.945	27.781	28.145	1'47.353	<b>266,9</b>	16:05'55.523
4	23.348	27.808	27.957	28.024	1'47.137	265,6	16:07'42.660
5	23.510	27.928	28.025	27.813	1'47.276	264,3	16:09'29.936
6	23.452	27.915	29.495	27.971	1'48.833	264,3	16:11'18.769
7	23.370	27.856	27.731	27.950	1'46.907	266,2	16:13'05.676
8	23.196	27.738	27.731	28.001	1'46.666	263,0	16:14'52.342
9	23.038	<b>27.662</b>	27.687	27.614	1'46.001	262,4	16:16'38.343
10	22.927	27.772	27.988	28.028	1'46.715	263,7	16:18'25.058
11	23.231	27.839	30.209	43.403	2'04.682P	262,4	16:20'29.740
12	11'18.831	28.435	28.430	28.290	12'43.986P	258,6	16:33'13.726
13	23.420	27.874	27.697	27.929	1'46.920	261,1	16:35'00.646
14	22.933	27.782	27.707	27.786	1'46.208	262,4	16:36'46.854
15	23.135	27.980	30.562	29.570	1'51.247	261,1	16:38'38.101
16	22.965	27.809	<b>27.343</b>	27.710	1'45.827	264,9	16:40'23.928
17	<b>22.849</b>	27.730	27.493	<b>27.511</b>	<b>1'45.583</b>	262,4	16:42'09.511
18	22.851	27.683	27.498	27.610	1'45.642	263,0	16:43'55.153
19	22.909	28.073	33.775	33.168	1'57.925	262,4	16:45'53.078

#### 19° 64 J. BUIS (1'48.123)

Lap	Seg.1	Seg.2	Seg.3	Seg.4	Lap Time	km/h	Local Time
1		28.568	27.936	29.130		259,2	16:02'11.073
2	24.102	28.575	28.644	28.670	1'49.991	264,9	16:04'01.064
3	24.785	28.392	28.572	28.686	1'50.435	263,7	16:05'51.499
4	25.675	28.337	30.275	28.868	1'53.155	265,6	16:07'44.654
5	23.398	28.327	28.136	28.771	1'48.632	<b>266,2</b>	16:09'33.286
6	26.791	28.589	28.858	29.100	1'53.338	263,7	16:11'26.624
7	23.991	28.383	28.431	28.752	1'49.557	261,7	16:13'16.181
8	26.011	28.510	28.429	41.745	2'04.695P	258,6	16:15'20.876
9	6'13.659	28.814	28.804	28.663	7'39.940P	256,8	16:23'00.816
10	<b>23.310</b>	28.221	28.109	28.786	1'48.426	261,1	16:24'49.242
11	23.649	28.846	28.565	28.517	1'49.577	258,0	16:26'38.819
12	23.508	28.380	28.180	28.793	1'48.861	260,5	16:28'27.680
13	23.587	28.362	28.016	28.415	1'48.380	259,9	16:30'16.060
14	23.544	28.292	30.446	28.881	1'51.163	260,5	16:32'07.223
15	23.401	28.197	28.019	28.513	1'48.130	259,9	16:33'55.353
16	23.565	29.748	28.544	41.394	2'03.251P	259,9	16:35'58.604
17	3'05.196	28.610	28.531	28.615	4'30.952P	262,4	16:40'29.556
18	23.687	28.614	27.952	28.465	1'48.718	260,5	16:42'18.274
19	23.648	<b>28.086</b>	<b>27.856</b>	28.533	<b>1'48.123</b>	263,0	16:44'06.397
20	23.374	28.255	28.315	<b>28.302</b>	1'48.246	262,4	16:45'54.643

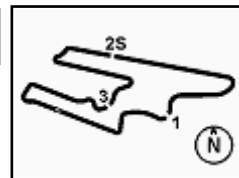
#### 20° 57 M. PETRATTI (1'48.679)

Lap	Seg.1	Seg.2	Seg.3	Seg.4	Lap Time	km/h	Local Time
1		29.337	28.757	28.805		257,4	16:02'21.281

15/10/2021 P = Pits In/Out - C = Lap Time Cancelled

These data/results cannot be reproduced, stored and/or transmitted in whole or in part by any manner of electronic, mechanical, photocopying, recording, broadcasting or otherwise now known or herein after developed without the previous express consent by the copyright owner, except for reproduction in daily press and regular printed publications on sale to the public within 60 days of the event related to those data/results and always provided that copyright symbol appears together as follows below.

© DORNA WSBK ORGANIZATION Srl 2021

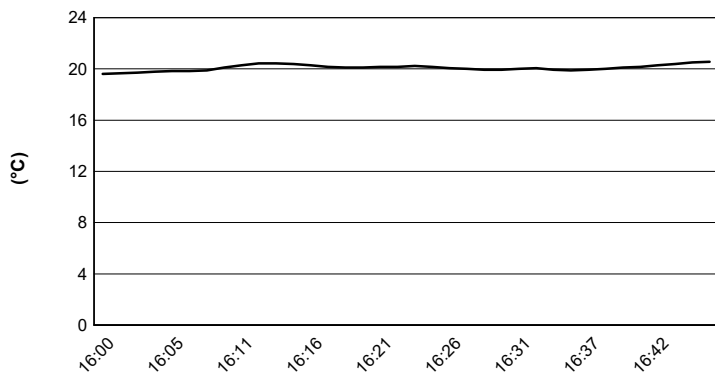


## Motul Argentinean Round, 15-17 October 2021

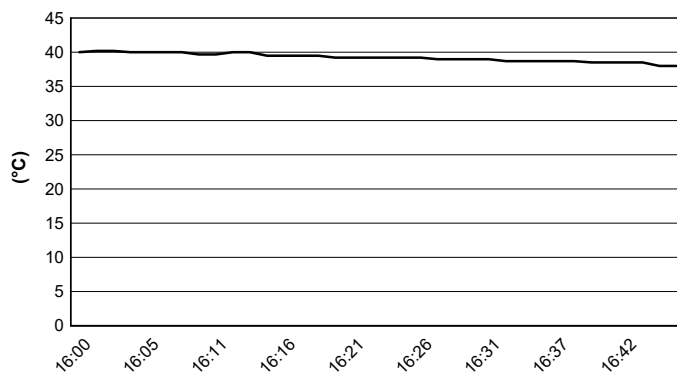
### Weather Report Free Practice 2nd Session

Session started 16:00 - Session ended 16:47

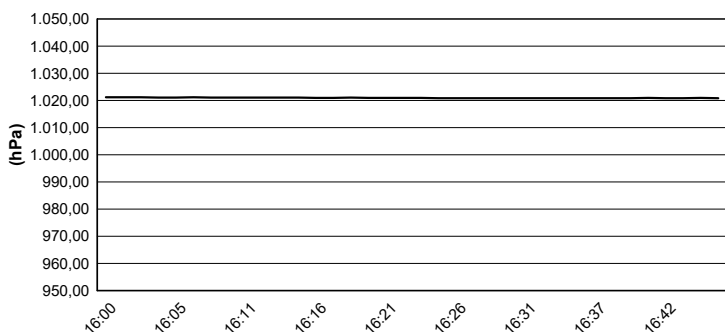
#### Air Temperature



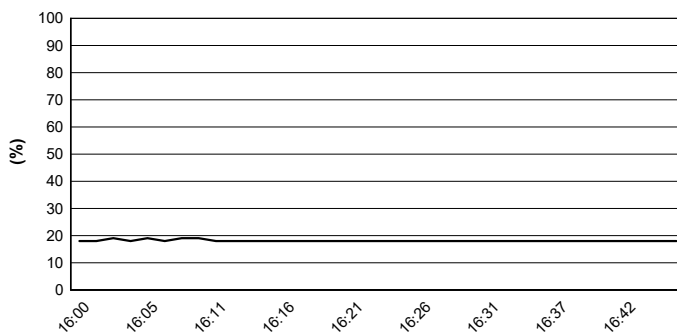
#### Track Temperature



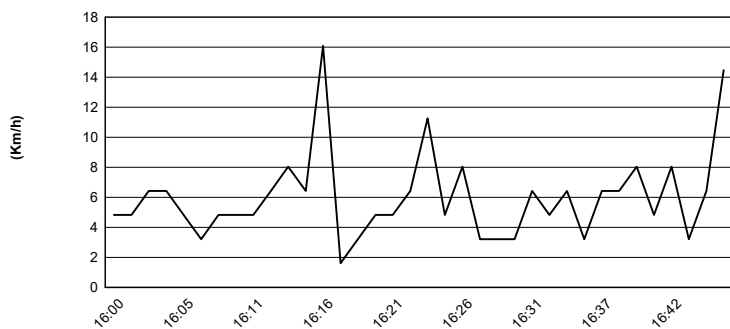
#### Air Pressure



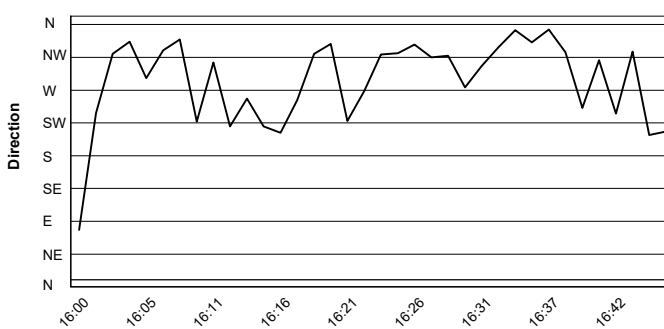
#### Humidity



#### Wind Speed



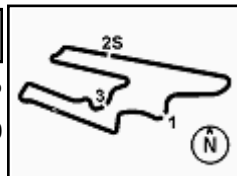
#### Wind Direction



15/10/2021

These data/results cannot be reproduced, stored and/or transmitted in whole or in part by any manner of electronic, mechanical, photocopying, recording, broadcasting or otherwise now known or herein after developed without the previous express consent by the copyright owner, except for reproduction in daily press and regular printed publications on sale to the public within 60 days of the event related to those data/results and always provided that copyright symbol appears together as follows below.

© DORNA WSBK ORGANIZATION Srl 2021



## Motul Argentinean Round, 15-17 October 2021

### Best Laps & Speeds

San Juan Villicum Circuit 4.276 m

No.	Rider Bike	Nat	Best Lap		FP1		FP2							
			LL	SPD	LL	SPD	LL	SPD						
1	<b>16 J. CLUZEL</b> Yamaha YZF R6	FRA	<b>1'41.926</b> 24 268,8		1'44.257 3 266,9		<b>1'41.926</b> 21 <b>268,8</b>							
2	<b>81 M. GONZALEZ</b> Yamaha YZF R6	ESP	<b>1'42.721</b> 37 275,0		1'43.173 16 267,5		<b>1'42.721</b> 21 <b>275,0</b>							
3	<b>77 D. AEGERTER</b> Yamaha YZF R6	SUI	<b>1'42.833</b> 39 269,5		1'43.125 19 267,5		<b>1'42.833</b> 20 <b>269,5</b>							
4	<b>56 P. SEBESTYEN</b> Yamaha YZF R6	HUN	<b>1'42.941</b> 37 270,9		1'44.030 18 268,8		<b>1'42.941</b> 19 <b>270,9</b>							
5	<b>66 N. TUULI</b> MV Agusta F3 675	FIN	<b>1'42.996</b> 33 262,3		1'44.207 17 <b>262,3</b>		<b>1'42.996</b> 16 259,8							
6	<b>28 G. VAN STRAALEN</b> Yamaha YZF R6	NED	<b>1'43.085</b> 36 267,5		1'44.887 18 263,6		<b>1'43.085</b> 18 <b>267,5</b>							
7	<b>3 R. DE ROSA</b> Kawasaki ZX-6R	ITA	<b>1'43.097</b> 39 267,5		1'43.741 18 264,2		<b>1'43.097</b> 21 <b>267,5</b>							
8	<b>4 S. ODENDAAL</b> Yamaha YZF R6	RSA	<b>1'43.124</b> 36 271,5		1'44.042 19 269,5		<b>1'43.124</b> 17 <b>271,5</b>							
9	<b>61 C. ONCU</b> Kawasaki ZX-6R	TUR	<b>1'43.162</b> 40 268,8		1'43.576 20 <b>268,8</b>		<b>1'43.162</b> 20 265,5							
10	<b>38 H. SOOMER</b> Yamaha YZF R6	EST	<b>1'43.180</b> 37 270,2		1'43.846 19 265,5		<b>1'43.180</b> 18 <b>270,2</b>							
11	<b>53 V. DEBISE</b> Yamaha YZF R6	FRA	<b>1'43.241</b> 38 264,9		1'43.836 19 263,0		<b>1'43.241</b> 19 <b>264,9</b>							
12	<b>25 M. BRENNER</b> Yamaha YZF R6	SUI	<b>1'43.407</b> 37 265,5		1'44.425 18 264,9		<b>1'43.407</b> 19 <b>265,5</b>							
13	<b>95 V. TAKALA</b> Yamaha YZF R6	FIN	<b>1'43.465</b> 39 268,8		1'44.330 20 265,5		<b>1'43.465</b> 19 <b>268,8</b>							
14	<b>40 U. ORRADRE</b> Yamaha YZF R6	ESP	<b>1'43.533</b> 37 269,5		1'44.784 16 264,9		<b>1'43.533</b> 21 <b>269,5</b>							
15	<b>5 P. OETTL</b> Kawasaki ZX-6R	GER	<b>1'43.802</b> 35 272,9		1'44.753 17 268,8		<b>1'43.802</b> 18 <b>272,9</b>							
16	<b>74 A. GONZALES</b> Yamaha YZF R6	ARG	<b>1'44.021</b> 33 264,9		1'46.635 16 264,2		<b>1'44.021</b> 17 <b>264,9</b>							
17	<b>32 S. MORAIS</b> Yamaha YZF R6	POR	<b>1'44.410</b> 40 265,5		1'45.221 19 261,1		<b>1'44.410</b> 21 <b>265,5</b>							
18	<b>24 L. TACCINI</b> Yamaha YZF R6	ITA	<b>1'45.583</b> 34 266,9		1'47.655 16 263,0		<b>1'45.583</b> 18 <b>266,9</b>							
19	<b>64 J. BUIS</b> Kawasaki ZX-6R	NED	<b>1'48.123</b> 36 266,2		1'51.450 17 263,0		<b>1'48.123</b> 19 <b>266,2</b>							
20	<b>57 M. PETRATTI</b> Yamaha YZF R6	ARG	<b>1'48.679</b> 20 261,1		1'50.359 6 <b>261,1</b>		<b>1'48.679</b> 14 260,4							

15/10/2021

These data/results cannot be reproduced, stored and/or transmitted in whole or in part by any manner of electronic, mechanical, photocopying, recording, broadcasting or otherwise now known or herein after developed without the previous express consent by the copyright owner, except for reproduction in daily press and regular printed publications on sale to the public within 60 days of the event related to those data/results and always provided that copyright symbol appears together as follows below.

© DORNA WSBK ORGANIZATION Srl 2021

FICR PERUGIA TIMING



Official Tyre Supplier



Official Timekeeper